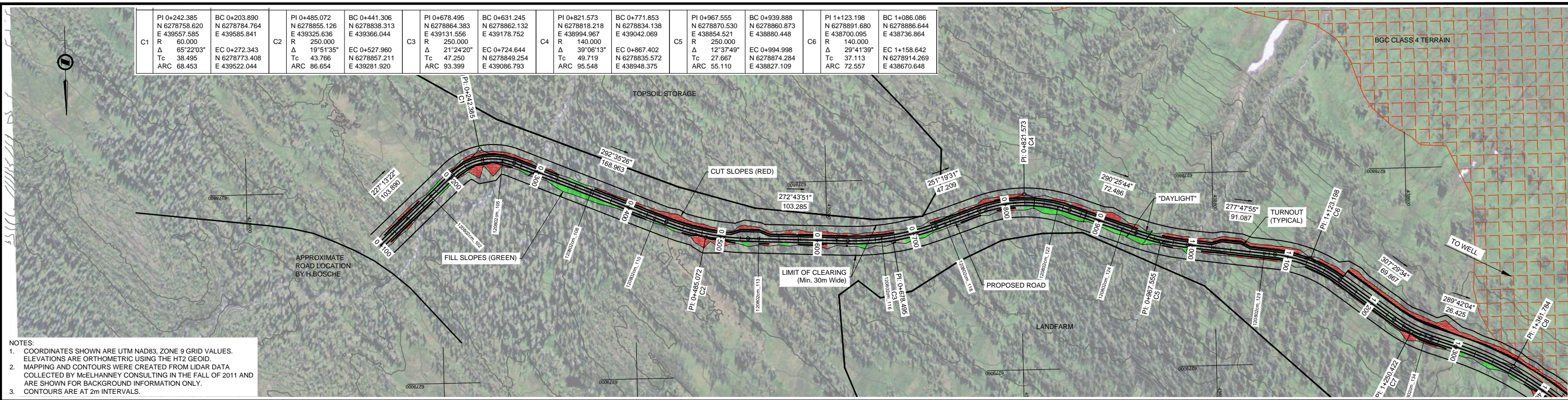


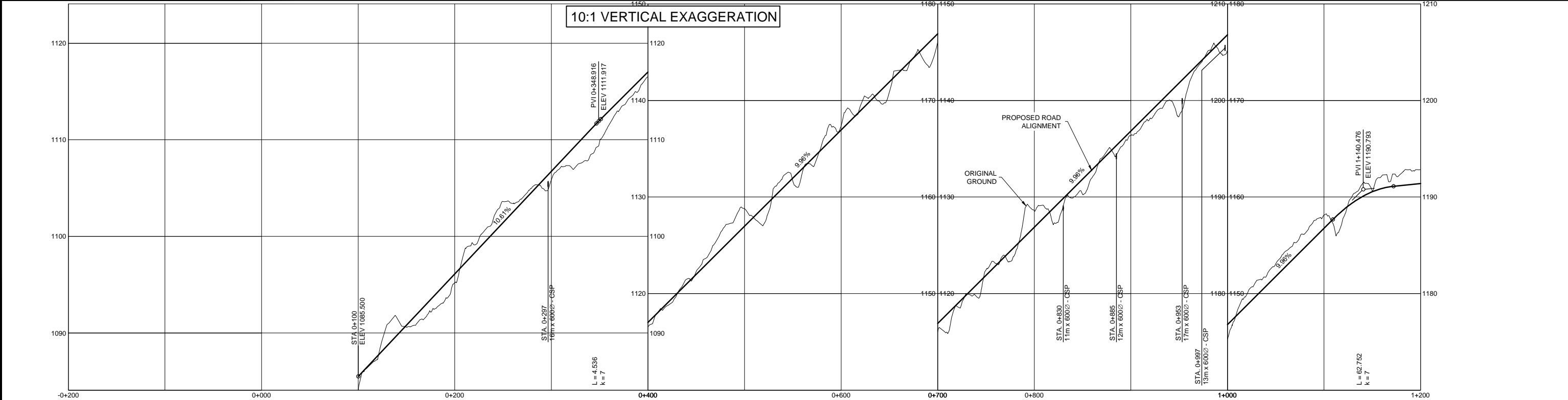
**APPENDIX 4-X
WATER WELL ACCESS
PLANS/PROFILES, MASS DIAGRAMS,
CROSS SECTIONS**

C1	PI 0+242.385 N 6278758.620 E 439557.585 R 60.000 Δ 65°22'03" Tc 38.495 ARC 68.453	BC 0+203.890 N 6278784.764 E 439585.841 R 250.000 EC 0+272.343 N 6278773.408 E 439522.044	PI 0+485.072 N 6278855.126 R 250.000 Δ 19°51'35" Tc 43.766 ARC 86.654	BC 0+441.306 N 6278838.313 E 439366.044 R 250.000 EC 0+527.960 N 6278857.211 E 439281.920	C2	PI 0+678.495 N 6278864.383 R 250.000 Δ 21°24'20" Tc 47.250 ARC 93.399	BC 0+631.245 N 6278862.132 E 439178.752 R 250.000 EC 0+724.644 N 6278849.254 E 439086.793	C3	PI 0+821.573 N 6278818.218 R 140.000 Δ 39°06'13" Tc 49.719 ARC 95.548	BC 0+771.853 N 6278834.138 E 439042.069 R 140.000 EC 0+867.402 N 6278835.572 E 438948.375	C4	PI 0+967.555 N 6278870.530 R 250.000 Δ 12°37'49" Tc 27.667 ARC 55.110	BC 0+939.888 N 6278860.873 E 438880.448 R 250.000 EC 0+994.998 N 6278874.284 E 438827.109	C5	PI 1+123.198 N 6278891.680 R 140.000 Δ 29°41'39" Tc 37.113 ARC 72.557	BC 1+086.086 N 6278896.644 E 438736.864 R 140.000 EC 1+158.642 N 6278914.269 E 438670.648	C6
----	---	---	--	---	----	--	---	----	--	---	----	--	---	----	--	---	----



NOTES:
 1. COORDINATES SHOWN ARE UTM NAD83, ZONE 9 GRID VALUES. ELEVATIONS ARE ORTHOMETRIC USING THE HT2 GEOD.
 2. MAPPING AND CONTOURS WERE CREATED FROM LIDAR DATA COLLECTED BY McELHANNEY CONSULTING IN THE FALL OF 2011 AND ARE SHOWN FOR BACKGROUND INFORMATION ONLY.
 3. CONTOURS ARE AT 2m INTERVALS.

DESIGN SPEED	40km	60km	6m	6m	60km
ROAD WIDTH	6m	6m	6m	6m	6m
CONSTRUCTION NOTES					
STRIPPING	376	810	988	802	933
SURFACING GRAVEL	198	396	443	396	396
COMMON EXCAVATION	274	904	1831	720	757
ROCK EXCAVATION	631	1584	430	711	1625
EMBANKMENT FILL	115	165	553	178	152
BORROW / WASTE		WASTE 500	WASTE 500		WASTE 1,000
MATERIAL MOVEMENT					



No.	Date	Revision	Dr.	Ch'd
A	OCT. 2012	ISSUED FOR PERMITTING		

THIS DRAWING AND DESIGN IS THE PROPERTY OF McELHANNEY CONSULTING SERVICES LTD. AND SHALL NOT BE USED, REUSED OR REPRODUCED WITHOUT THE CONSENT OF THE SAID COMPANY. McELHANNEY CONSULTING SERVICES LTD. WILL NOT BE HELD RESPONSIBLE FOR THE IMPROPER OR UNAUTHORIZED USE OF THIS DRAWING AND DESIGN. INFORMATION ON EXISTING FEATURES MAY NOT BE COMPLETE OR ACCURATE.

McElhanney
 McElhanney Consulting Services Ltd.
 1833 1st AVENUE PH (250) 561-2229
 PRINCE GEORGE B.C. V2L 2Y8 FAX (250) 563-1941
 www.mcelhanney.com TOLL FREE (866) 451-2229

Designed: SAB Checked: RAO QC: RWP
 Drawn: DMW DATE: 12-10-31
 Scale - Printed to 34"x22" "D" Size Sheet
 0 Horiz. 1:2000 100
 0 Vert. 1:200 10

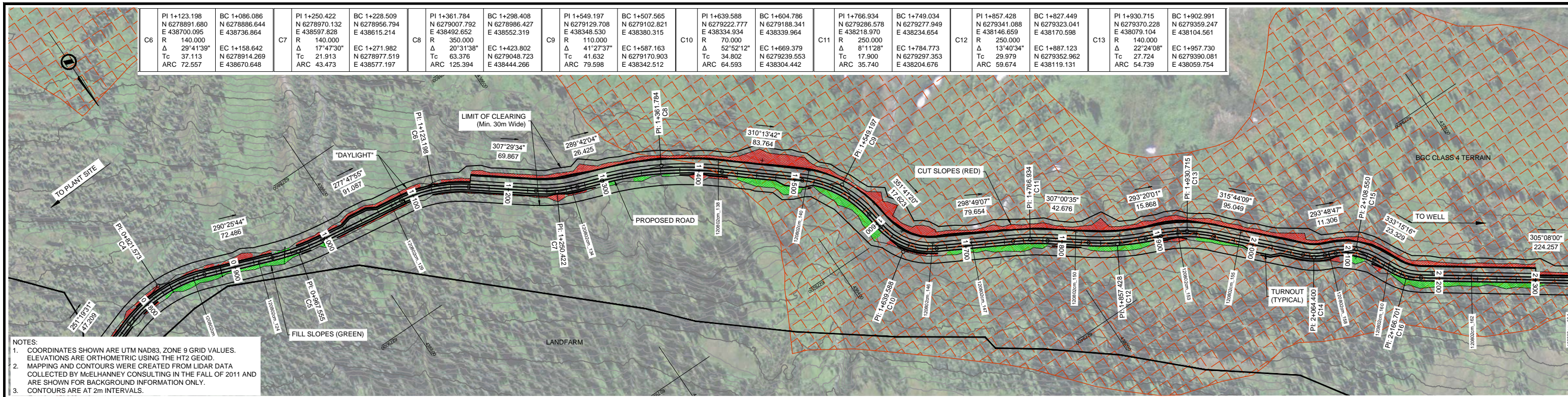
SEABRIDGE GOLD INC.
 PLANT SITE WATER WELL SERVICE ACCESS
 STA. 0+100 to STA. 1+200
 PLAN / PROFILE

Client Project No.	-
Client Drawing No.	-
MCSL Project No.	2341-01506-0
Drawing No.	1506-100-W01
Sheet	0 of 0
Revision	A

Destroy all prints bearing previous number

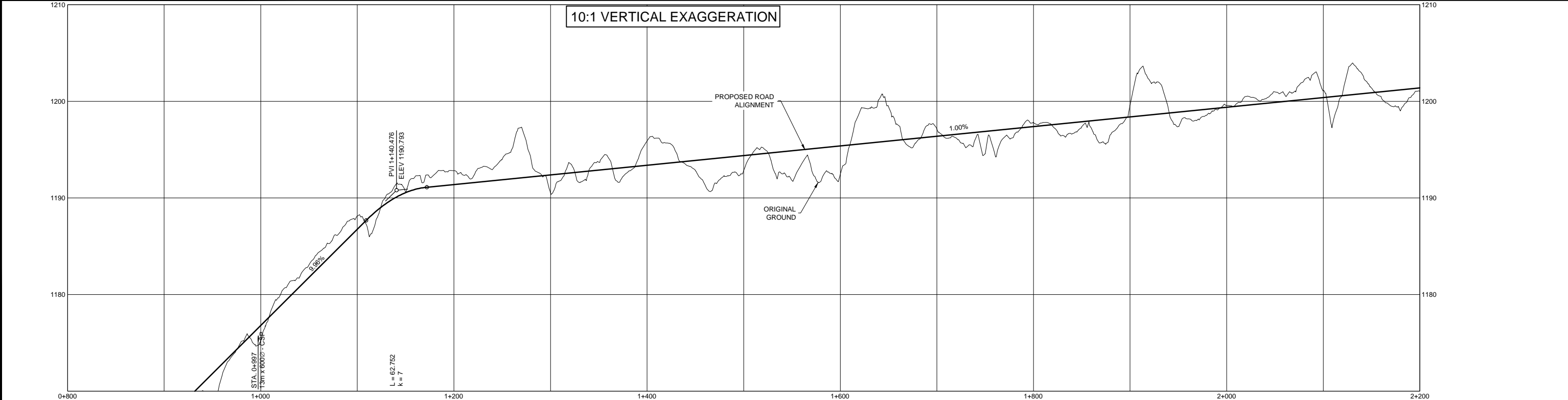
H:\PROJ\2341\1506-159A\1506-159A\Drawings\100.10 Drawings\2011 Sheets\WATER WELL SERVICE ROAD.dwg, 11/8/2012 3:35:33 PM

PI 1+123.198 N 6278891.680 E 438700.095 R 140.000 Δ 29°41'39" Tc 37.113 ARC 72.557	BC 1+086.086 N 6278886.644 E 438736.864	PI 1+250.422 N 6278970.132 E 438597.828 R 140.000 Δ 17°47'30" Tc 21.913 ARC 43.473	BC 1+228.509 N 6278956.794 E 438615.214	PI 1+361.784 N 6279007.792 E 438492.652 R 350.000 Δ 20°31'38" Tc 63.376 ARC 125.394	BC 1+298.408 N 6278986.427 E 438552.319	PI 1+549.197 N 6279129.708 E 438348.530 R 110.000 Δ 41°27'37" Tc 41.632 ARC 79.598	BC 1+507.565 N 6279102.821 E 438380.315	PI 1+639.588 N 6279222.777 E 438334.934 R 70.000 Δ 52°52'12" Tc 34.802 ARC 64.593	BC 1+604.786 N 6279188.341 E 438339.964	PI 1+766.934 N 6279286.578 E 438218.970 R 250.000 Δ 8°11'28" Tc 17.900 ARC 35.740	BC 1+749.034 N 6279277.949 E 438234.654	PI 1+857.428 N 6279341.088 E 438146.659 R 250.000 Δ 13°40'34" Tc 29.979 ARC 59.674	BC 1+827.449 N 6279323.041 E 438170.598	PI 1+930.715 N 6279370.228 E 438079.104 R 140.000 Δ 22°24'08" Tc 27.724 ARC 54.739	BC 1+902.991 N 6279359.247 E 438104.561
--	---	--	---	---	---	--	---	---	---	---	---	--	---	--	---



NOTES:
 1. COORDINATES SHOWN ARE UTM NAD83, ZONE 9 GRID VALUES. ELEVATIONS ARE ORTHOMETRIC USING THE HT2 GEIOD.
 2. MAPPING AND CONTOURS WERE CREATED FROM LIDAR DATA COLLECTED BY McELHANNEY CONSULTING IN THE FALL OF 2011 AND ARE SHOWN FOR BACKGROUND INFORMATION ONLY.
 3. CONTOURS ARE AT 2m INTERVALS.

DESIGN SPEED	40km	60km	60km	50km	60km	60km
ROAD WIDTH	6m	6m	6m	6m	6m	6m
CONSTRUCTION NOTES						
STRIPPING	974 m³	1424	1812	1603	1518	
SURFACING GRAVEL	419 m³	396	419	396	408	
COMMON EXCAVATION	2516 m³	3810	3483	3857	3326	
ROCK EXCAVATION	212 m³	458	3703	1624	1190	
EMBANKMENT FILL	1722 m³	5743	3184	6218	5006	
BORROW / WASTE	WASTE 9,000 (SIDECAST)	WASTE 7,000 (SIDECAST)	WASTE 7,000 (SIDECAST)	WASTE 6,000 (SIDECAST)	WASTE 10,000 (SIDECAST)	
MATERIAL MOVEMENT						



No.	Date	Revision	Dr.	Ch'd
A	OCT. 2012	ISSUED FOR PERMITTING		

THIS DRAWING AND DESIGN IS THE PROPERTY OF McELHANNEY CONSULTING SERVICES LTD. AND SHALL NOT BE USED, REUSED OR REPRODUCED WITHOUT THE CONSENT OF THE SAID COMPANY. McELHANNEY CONSULTING SERVICES LTD. WILL NOT BE HELD RESPONSIBLE FOR THE IMPROPER OR UNAUTHORIZED USE OF THIS DRAWING AND DESIGN. INFORMATION ON EXISTING FEATURES MAY NOT BE COMPLETE OR ACCURATE.

McElhanney
 McElhanney Consulting Services Ltd.
 1833 1st AVENUE PH (250) 561-2229
 PRINCE GEORGE B.C. V2L 2Y8 FAX (250) 563-1941
 www.mcelhanney.com TOLL FREE (866) 451-2229

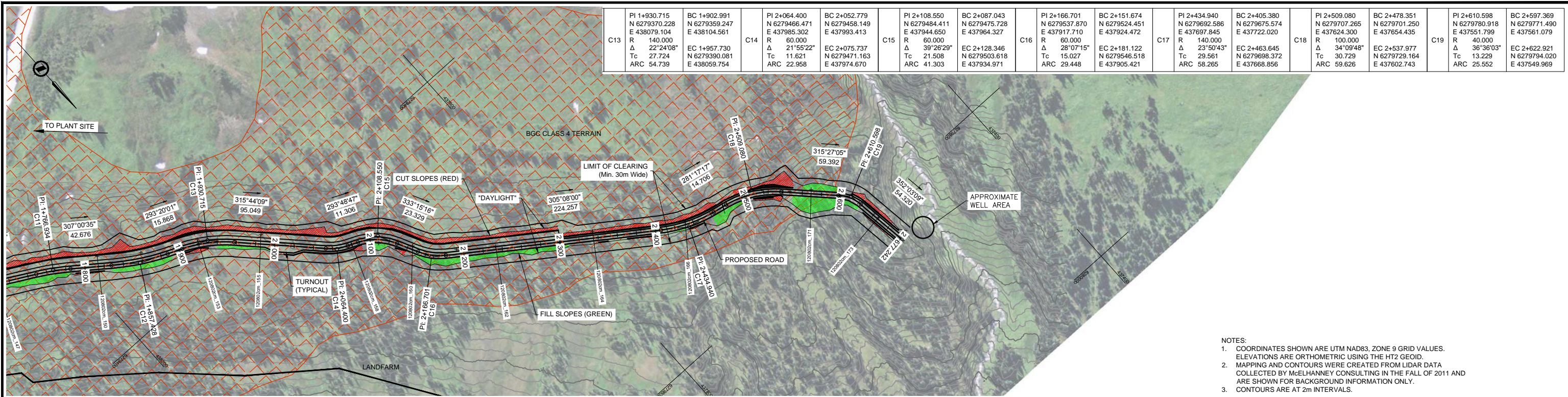
Designed: SAB Checked: RAO QC: RWP
 Drawn: DMW DATE: 12-10-31
 Scale - Printed to 34"x22" "D" Size Sheet
 0 Horiz. 1:2000 100
 0 Vert. 1:200 10

SEABRIDGE GOLD INC.
 PLANT SITE WATER WELL SERVICE ACCESS
 STA. 0+800 to STA. 2+200
 PLAN / PROFILE

Client Project No.	-
Client Drawing No.	-
MCSL Project No.	2341-01506-0
Drawing No.	1506-100-W02
Sheet	0 of 0
Revision	A

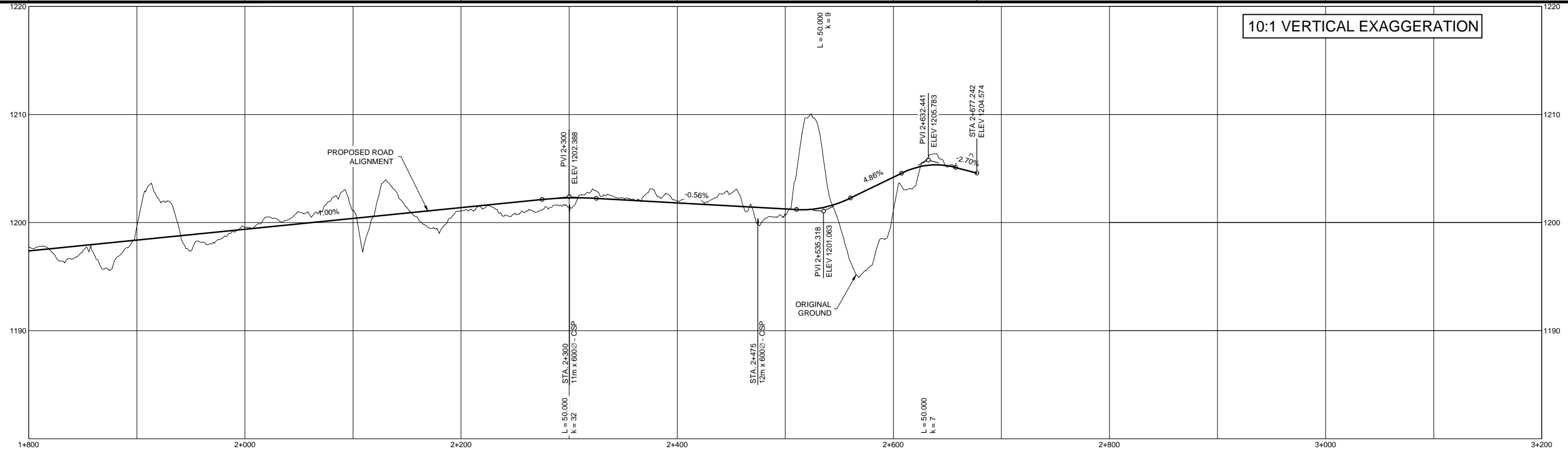
Destroy all prints bearing previous number

H:\PROJ\2341\1506-159A\1506 Seabridge_KSM Project\100.10 Drawings\100.10 Sheets\WATER WELL SERVICE ROAD.dwg, 11/9/2012 1:12:55 PM



- NOTES:
- COORDINATES SHOWN ARE UTM NAD83, ZONE 9 GRID VALUES. ELEVATIONS ARE ORTHOMETRIC USING THE HT2 GEOID.
 - MAPPING AND CONTOURS WERE CREATED FROM LIDAR DATA COLLECTED BY McELHANNEY CONSULTING IN THE FALL OF 2011 AND ARE SHOWN FOR BACKGROUND INFORMATION ONLY.
 - CONTOURS ARE AT 2m INTERVALS.

DESIGN SPEED	40km	60km	50km	30km
ROAD WIDTH	6m	6m	6m	6m
CONSTRUCTION NOTES				
STRIPPING	m³ 1494	1186	1216	375
SURFACING GRAVEL	m³ 431	396	396	153
COMMON EXCAVATION	m³ 3611	2089	1522	475
ROCK EXCAVATION	m³ 980	1174	5319	699
EMBANKMENT FILL	m³ 5856	1798	1745	33
BORROW / WASTE	WASTE 6,500			BORROW 1,000
MATERIAL MOVEMENT				



A	OCT. 2012	ISSUED FOR PERMITTING	Dr.	Ck'd
No.	Date	Revision		

THIS DRAWING AND DESIGN IS THE PROPERTY OF McELHANNEY CONSULTING SERVICES LTD. AND SHALL NOT BE USED, REUSED OR REPRODUCED WITHOUT THE CONSENT OF THE SAID COMPANY. McELHANNEY CONSULTING SERVICES LTD. WILL NOT BE HELD RESPONSIBLE FOR THE IMPROPER OR UNAUTHORIZED USE OF THIS DRAWING AND DESIGN. INFORMATION ON EXISTING FEATURES MAY NOT BE COMPLETE OR ACCURATE.

McElhanney

McElhanney Consulting Services Ltd.

1833 1st AVENUE PH (250) 561-2229
 PRINCE GEORGE B.C. V2L 2Y8 FAX (250) 563-1941
 www.mcelhanney.com TOLL FREE (866) 451-2229

Designed: SAB	Checked: RAO	QC: RWP
Drawn: DMW	DATE: 12-10-31	
Scale - Printed to 34"x22" "D" Size Sheet		

SEBRIDGE GOLD INC.

PLANT SITE WATER WELL SERVICE ACCESS

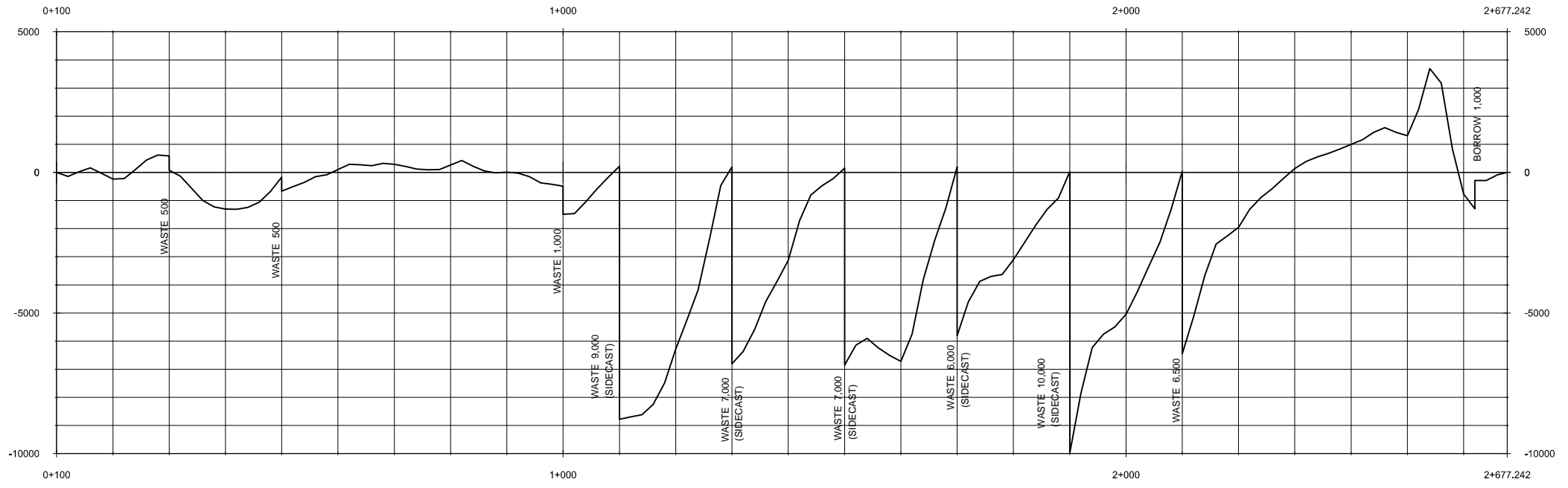
STA. 2+000 to STA. 2+677

PLAN / PROFILE

Client Project No	-
Client Drawing No	-
MCSL Project No	2341-01506-0
Drawing No.	1506-100-W03
Sheet	0 of 0
Revision	A

Destroy all prints bearing previous number ▲

H:\PROJ\2341\1506-159A\1506 Stabridge_KSM Project\100.0 Roads\100.10 Drawings\2011 Sheets\WATER WELL SERVICE ROAD.dwg, 11/8/2012 3:33:18 PM



No.	Date	Revision	Dr.	Ch'd
A	OCT. 2012	ISSUED FOR PERMITTING		

THIS DRAWING AND DESIGN IS THE PROPERTY OF McELHANNEY CONSULTING SERVICES LTD. AND SHALL NOT BE USED, REUSED OR REPRODUCED WITHOUT THE CONSENT OF THE SAID COMPANY. McELHANNEY CONSULTING SERVICES LTD. WILL NOT BE HELD RESPONSIBLE FOR THE IMPROPER OR UNAUTHORIZED USE OF THIS DRAWING AND DESIGN.



McElhanney
 McElhanney Consulting Services Ltd.
 1833 1st AVENUE PH (250) 561-2229
 PRINCE GEORGE B.C. V2L 2Y8 FAX (250) 563-1941
 www.mcelhanney.com TOLL FREE (866) 451-2229

Designed: SAB Checked: RAO QC: RWP
 Drawn: SAB/DMW DATE: 12-10-05
 Scale - Printed to 34"x22" "D" Size Sheet
 0 1:5000 250
 VERT. 1mm=100cu.m

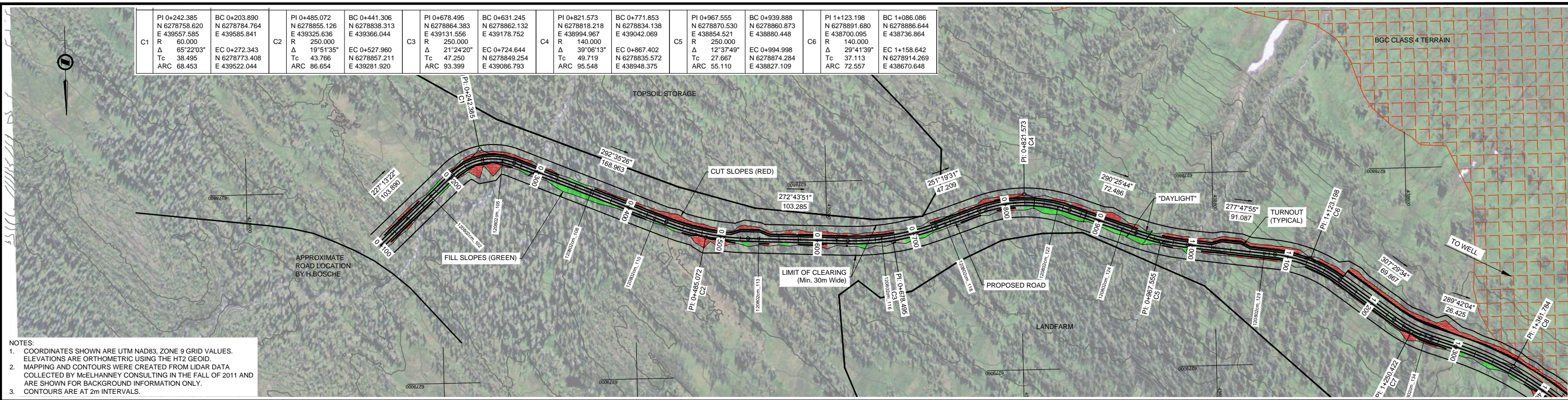
Approved Sealed

SEBRIDGE GOLD INC.
 PLANT SITE WATER WELL SERVICE ACCESS
 -
 MASS HAUL DIAGRAM

Client Project No	-
Client Drawing No	-
MCSL Project No	2341-01506-0
Drawing No.	1506-W-MH-01
Revision	A

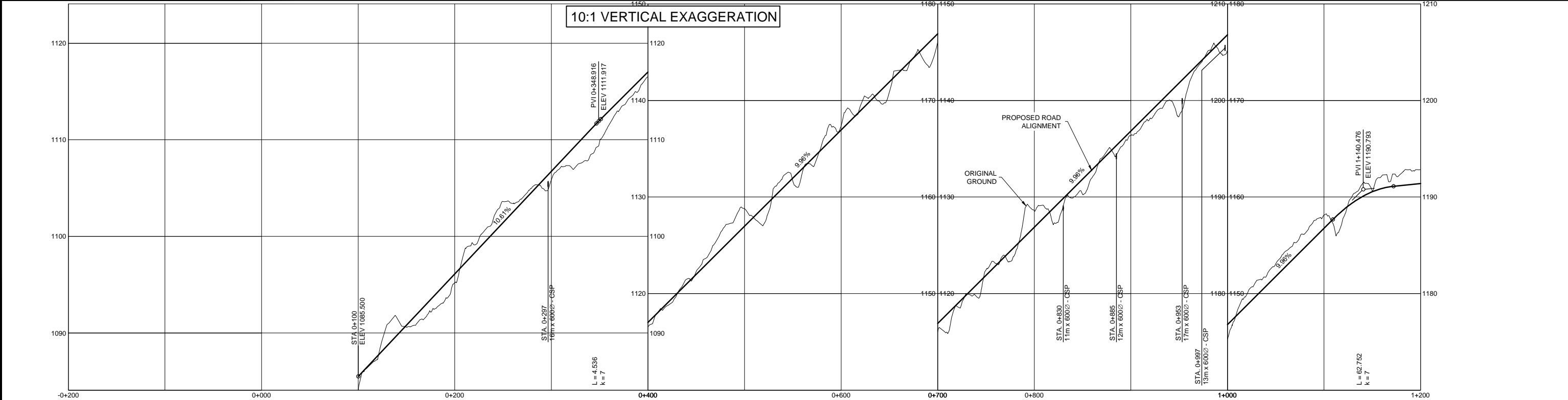
Destroy all prints bearing previous number ▲

C1	PI 0+242.385 N 6278758.620 E 439557.585 R 60.000 Δ 65°22'03" Tc 38.495 ARC 68.453	BC 0+203.890 N 6278784.764 E 439585.841	C2	PI 0+485.072 N 6278855.126 E 439325.636 R 250.000 Δ 19°51'35" Tc 43.766 ARC 86.654	BC 0+441.306 N 6278838.313 E 439366.044	C3	PI 0+678.495 N 6278864.383 E 439131.556 R 250.000 Δ 21°24'20" Tc 47.250 ARC 93.399	BC 0+631.245 N 6278862.132 E 439178.752	C4	PI 0+821.573 N 6278818.218 E 438994.967 R 140.000 Δ 39°06'13" Tc 49.719 ARC 95.548	BC 0+771.853 N 6278834.138 E 439042.069	C5	PI 0+967.555 N 6278870.530 E 438854.521 R 250.000 Δ 12°37'49" Tc 27.667 ARC 55.110	BC 0+939.888 N 6278860.873 E 438880.448	C6	PI 1+123.198 N 6278891.680 E 438700.095 R 140.000 Δ 29°41'39" Tc 37.113 ARC 72.557	BC 1+086.086 N 6278896.644 E 438736.864
----	---	---	----	--	---	----	--	---	----	--	---	----	--	---	----	--	---



NOTES:
 1. COORDINATES SHOWN ARE UTM NAD83, ZONE 9 GRID VALUES. ELEVATIONS ARE ORTHOMETRIC USING THE HT2 GEOD.
 2. MAPPING AND CONTOURS WERE CREATED FROM LIDAR DATA COLLECTED BY McELHANNEY CONSULTING IN THE FALL OF 2011 AND ARE SHOWN FOR BACKGROUND INFORMATION ONLY.
 3. CONTOURS ARE AT 2m INTERVALS.

DESIGN SPEED	40km	60km	6m	6m	60km
ROAD WIDTH	6m	6m	6m	6m	6m
CONSTRUCTION NOTES					
STRIPPING	376	810	988	802	933
SURFACING GRAVEL	198	396	443	396	396
COMMON EXCAVATION	274	904	1831	720	757
ROCK EXCAVATION	631	1584	430	711	1625
EMBANKMENT FILL	115	165	553	178	152
BORROW / WASTE		WASTE 500	WASTE 500		WASTE 1,000
MATERIAL MOVEMENT					



No.	Date	Revision	Dr.	Cl'd
A	OCT. 2012	ISSUED FOR PERMITTING		

THIS DRAWING AND DESIGN IS THE PROPERTY OF McELHANNEY CONSULTING SERVICES LTD. AND SHALL NOT BE USED, REUSED OR REPRODUCED WITHOUT THE CONSENT OF THE SAID COMPANY. McELHANNEY CONSULTING SERVICES LTD. WILL NOT BE HELD RESPONSIBLE FOR THE IMPROPER OR UNAUTHORIZED USE OF THIS DRAWING AND DESIGN. INFORMATION ON EXISTING FEATURES MAY NOT BE COMPLETE OR ACCURATE.

McElhanney
 McElhanney Consulting Services Ltd.
 1833 1st AVENUE PH (250) 561-2229
 PRINCE GEORGE B.C. V2L 2Y8 FAX (250) 563-1941
 www.mcelhanney.com TOLL FREE (866) 451-2229

Designed: SAB Checked: RAO QC: RWP
 Drawn: DMW DATE: 12-10-31
 Scale - Printed to 34"x22" "D" Size Sheet
 0 Horiz. 1:2000 100
 0 Vert. 1:200 10

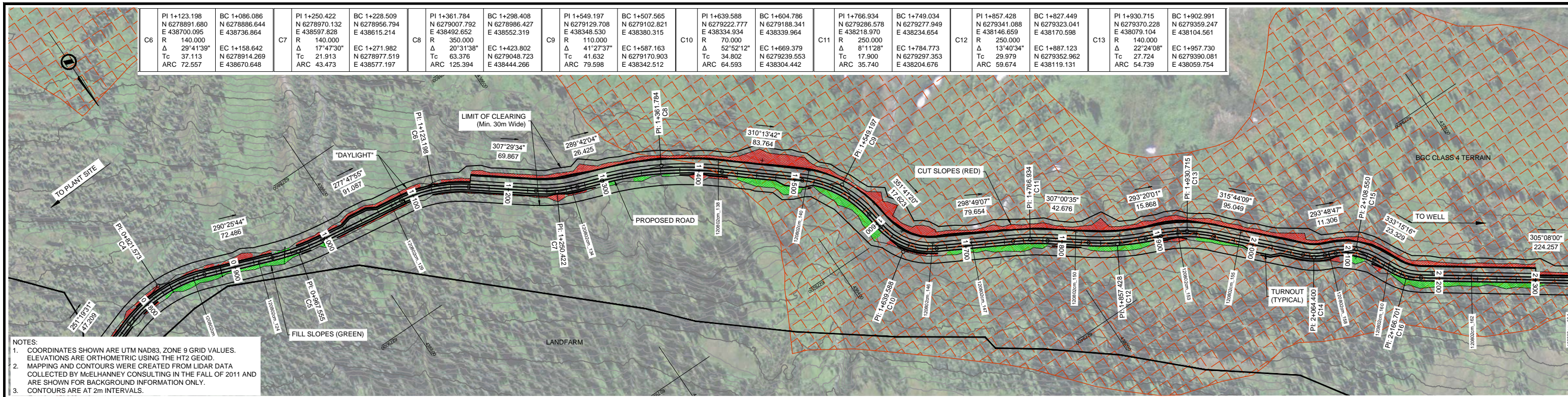
SEABRIDGE GOLD INC.
 PLANT SITE WATER WELL SERVICE ACCESS
 STA. 0+100 to STA. 1+200
 PLAN / PROFILE

Client Project No	-
Client Drawing No	-
MCSL Project No.	2341-01506-0
Drawing No.	1506-100-W01
Sheet	0 of 0
Revision	A

Destroy all prints bearing previous number

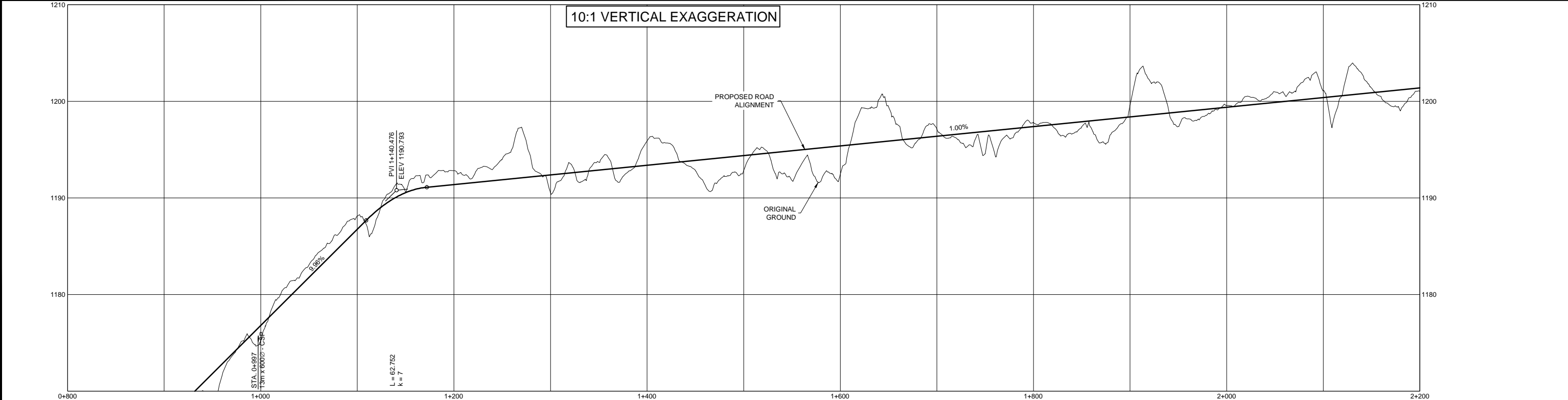
H:\PROJ\2341\1506-159A\1506-159A\Drawings\100.10 Drawings\2011 Sheets\WATER WELL SERVICE ROAD.dwg, 11/8/2012 3:35:33 PM

PI 1+123.198 N 6278891.680 E 438700.095 R 140.000 Δ 29°41'39" Tc 37.113 ARC 72.557	BC 1+086.086 N 6278886.644 E 438736.864	PI 1+250.422 N 6278970.132 E 438597.828 R 140.000 Δ 17°47'30" Tc 21.913 ARC 43.473	BC 1+228.509 N 6278956.794 E 438615.214	PI 1+361.784 N 6279007.792 E 438492.652 R 350.000 Δ 20°31'38" Tc 63.376 ARC 125.394	BC 1+298.408 N 6278986.427 E 438552.319	PI 1+549.197 N 6279129.708 E 438348.530 R 110.000 Δ 41°27'37" Tc 41.632 ARC 79.598	BC 1+507.565 N 6279102.821 E 438380.315	PI 1+639.588 N 6279222.777 E 438334.934 R 70.000 Δ 52°52'12" Tc 34.802 ARC 64.593	BC 1+604.786 N 6279188.341 E 438339.964	PI 1+766.934 N 6279286.578 E 438218.970 R 250.000 Δ 8°11'28" Tc 17.900 ARC 35.740	BC 1+749.034 N 6279277.949 E 438234.654	PI 1+857.428 N 6279341.088 E 438146.659 R 250.000 Δ 13°40'34" Tc 29.979 ARC 59.674	BC 1+827.449 N 6279323.041 E 438170.598	PI 1+930.715 N 6279370.228 E 438079.104 R 140.000 Δ 22°24'08" Tc 27.724 ARC 54.739	BC 1+902.991 N 6279359.247 E 438104.561
--	---	--	---	---	---	--	---	---	---	---	---	--	---	--	---



NOTES:
 1. COORDINATES SHOWN ARE UTM NAD83, ZONE 9 GRID VALUES. ELEVATIONS ARE ORTHOMETRIC USING THE HT2 GEIOD.
 2. MAPPING AND CONTOURS WERE CREATED FROM LIDAR DATA COLLECTED BY McELHANNEY CONSULTING IN THE FALL OF 2011 AND ARE SHOWN FOR BACKGROUND INFORMATION ONLY.
 3. CONTOURS ARE AT 2m INTERVALS.

DESIGN SPEED	40km	60km	60km	50km	60km	60km
ROAD WIDTH	6m	6m	6m	6m	6m	6m
CONSTRUCTION NOTES						
STRIPPING	974 m³	1424	1812	1603	1518	
SURFACING GRAVEL	419 m³	396	419	396	408	
COMMON EXCAVATION	2516 m³	3810	3483	3857	3326	
ROCK EXCAVATION	212 m³	458	3703	1624	1190	
EMBANKMENT FILL	1722 m³	5743	3184	6218	5006	
BORROW / WASTE	WASTE 9,000 (SIDECAST)	WASTE 7,000 (SIDECAST)	WASTE 7,000 (SIDECAST)	WASTE 6,000 (SIDECAST)	WASTE 10,000 (SIDECAST)	
MATERIAL MOVEMENT						



No.	Date	Revision	Dr.	Clk'd
A	OCT. 2012	ISSUED FOR PERMITTING		

THIS DRAWING AND DESIGN IS THE PROPERTY OF McELHANNEY CONSULTING SERVICES LTD. AND SHALL NOT BE USED, REUSED OR REPRODUCED WITHOUT THE CONSENT OF THE SAID COMPANY. McELHANNEY CONSULTING SERVICES LTD. WILL NOT BE HELD RESPONSIBLE FOR THE IMPROPER OR UNAUTHORIZED USE OF THIS DRAWING AND DESIGN. INFORMATION ON EXISTING FEATURES MAY NOT BE COMPLETE OR ACCURATE.

McElhanney
 McElhanney Consulting Services Ltd.
 1833 1st AVENUE PH (250) 561-2229
 PRINCE GEORGE B.C. V2L 2Y8 FAX (250) 563-1941
 www.mcelhanney.com TOLL FREE (866) 451-2229

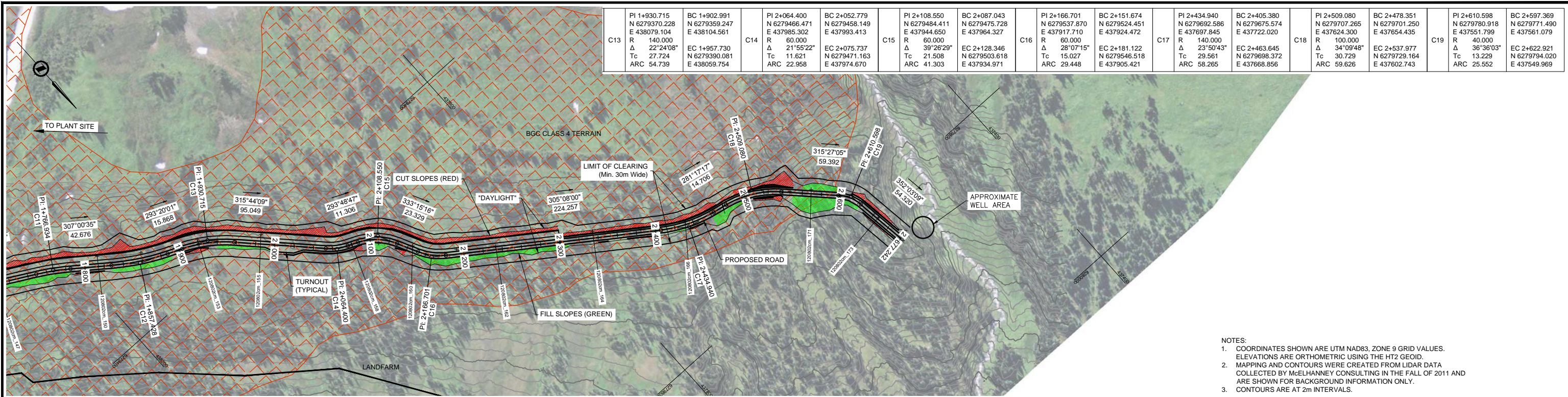
Designed: SAB Checked: RAO QC: RWP
 Drawn: DMW DATE: 12-10-31
 Scale - Printed to 34"x22" "D" Size Sheet
 0 Horiz. 1:2000 100
 0 Vert. 1:200 10

SEABRIDGE GOLD INC.
 PLANT SITE WATER WELL SERVICE ACCESS
 STA. 0+800 to STA. 2+200
 PLAN / PROFILE

Client Project No.	-
Client Drawing No.	-
MCSL Project No.	2341-01506-0
Drawing No.	1506-100-W02
Sheet	0 of 0
Revision	A

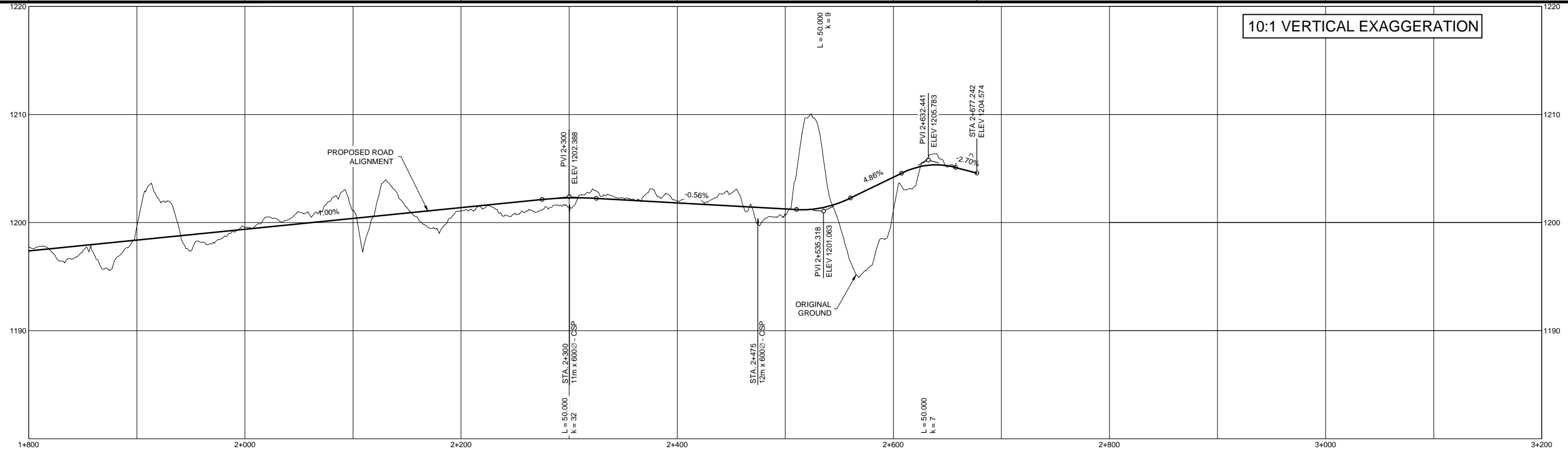
Destroy all prints bearing previous number

H:\PROJ\2341\1506-159A\1506 Seabridge_KSM Project\100.10 Drawings\100.10 Sheets\WATER WELL SERVICE ROAD.dwg, 11/9/2012 1:12:55 PM



NOTES:
 1. COORDINATES SHOWN ARE UTM NAD83, ZONE 9 GRID VALUES. ELEVATIONS ARE ORTHOMETRIC USING THE HT2 GEOID.
 2. MAPPING AND CONTOURS WERE CREATED FROM LIDAR DATA COLLECTED BY McELHANNEY CONSULTING IN THE FALL OF 2011 AND ARE SHOWN FOR BACKGROUND INFORMATION ONLY.
 3. CONTOURS ARE AT 2m INTERVALS.

DESIGN SPEED	40km	60km	50km	30km
ROAD WIDTH	6m	6m	6m	6m
CONSTRUCTION NOTES				
STRIPPING	m³ 1494	1186	1216	375
SURFACING GRAVEL	m³ 431	396	396	153
COMMON EXCAVATION	m³ 3611	2089	1522	475
ROCK EXCAVATION	m³ 980	1174	5319	699
EMBANKMENT FILL	m³ 5856	1798	1745	33
BORROW / WASTE	WASTE 6,500			BORROW 1,000
MATERIAL MOVEMENT				



No.	Date	Revision	Dr.	Ch'd
A	OCT. 2012	ISSUED FOR PERMITTING		

THIS DRAWING AND DESIGN IS THE PROPERTY OF McELHANNEY CONSULTING SERVICES LTD. AND SHALL NOT BE USED, REUSED OR REPRODUCED WITHOUT THE CONSENT OF THE SAID COMPANY. McELHANNEY CONSULTING SERVICES LTD. WILL NOT BE HELD RESPONSIBLE FOR THE IMPROPER OR UNAUTHORIZED USE OF THIS DRAWING AND DESIGN. INFORMATION ON EXISTING FEATURES MAY NOT BE COMPLETE OR ACCURATE.

McElhanney
 McElhanney Consulting Services Ltd.
 1833 1st AVENUE PRINCE GEORGE B.C. V2L 2Y8
 PH (250) 561-2229 FAX (250) 563-1941
 www.mcelhanney.com TOLL FREE (866) 451-2229

Designed: SAB Checked: RAO QC: RWP
 Drawn: DMW DATE: 12-10-31
 Scale - Printed to 34"x22" "D" Size Sheet
 0 Horiz. 1:2000 100
 0 Vert. 1:200 10

SEABRIDGE GOLD INC.
 PLANT SITE WATER WELL SERVICE ACCESS
 STA. 2+000 to STA. 2+677
 PLAN / PROFILE

Client Project No	-
Client Drawing No	-
MCSL Project No	2341-01506-0
Drawing No.	1506-100-W03
Sheet	0 of 0
Revision	A

Destroy all prints bearing previous number

H:\PROJ\2341\1506-159A\1506 Stabridge KSM Project\100.0 Roads\100.10 Drawings\2011 Sheets\WATER WELL SERVICE ROAD.dwg, 11/8/2012 3:33:18 PM