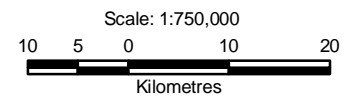


- Legend**
- Project Location
 - ✈ Airport
 - ⊙ Regional Study Area Communities
 - Hamlets
 - Other Communities
 - Rural Road
 - Existing Road
 - Proposed Access Road
 - Highway
 - ~ Watercourse
 - Waterbody
 - Rural Municipality
 - ▭ FALC Boundary
 - ▭ CEA Study Area
 - ▭ First Nations Reserve



Reference
 Base data: NRCan National Road Network;
 NTS 1:250,000 scale: GeoSask
 Indian Reserve/ Municipality Boundaries: GeoSask
 Mine facilities: Amec, dated 19 February 2009

CLIENT: 		
PROJECT: Star - Orion South Diamond Project		
Cumulative Effects Assessment Study Area		
DATE: September 2010	ANALYST: EO	Figure 9.2-1
JOB No: SX0373302	QA/QC: SB	
GIS FILE: X-Other-052		PDF FILE: X-Other-052_CEA.pdf
PROJECTION: UTM Zone 13	DATUM: NAD27	

Y:\GIS\Projects\SX03733_Share_Gold_Diamond_1\Maping\19_Other\Baseline\X-Other-052.mxd

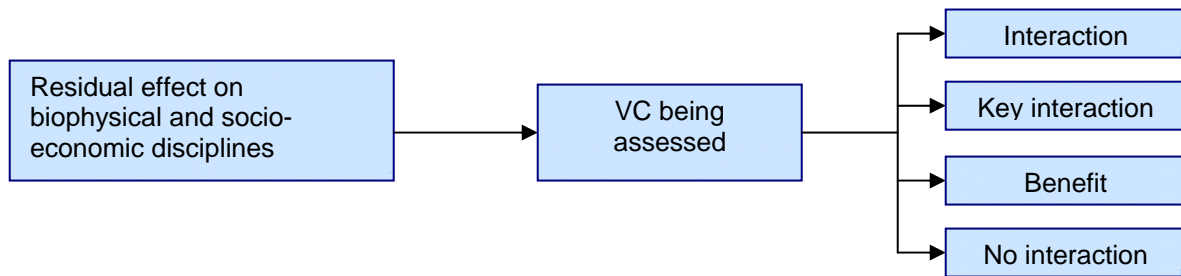
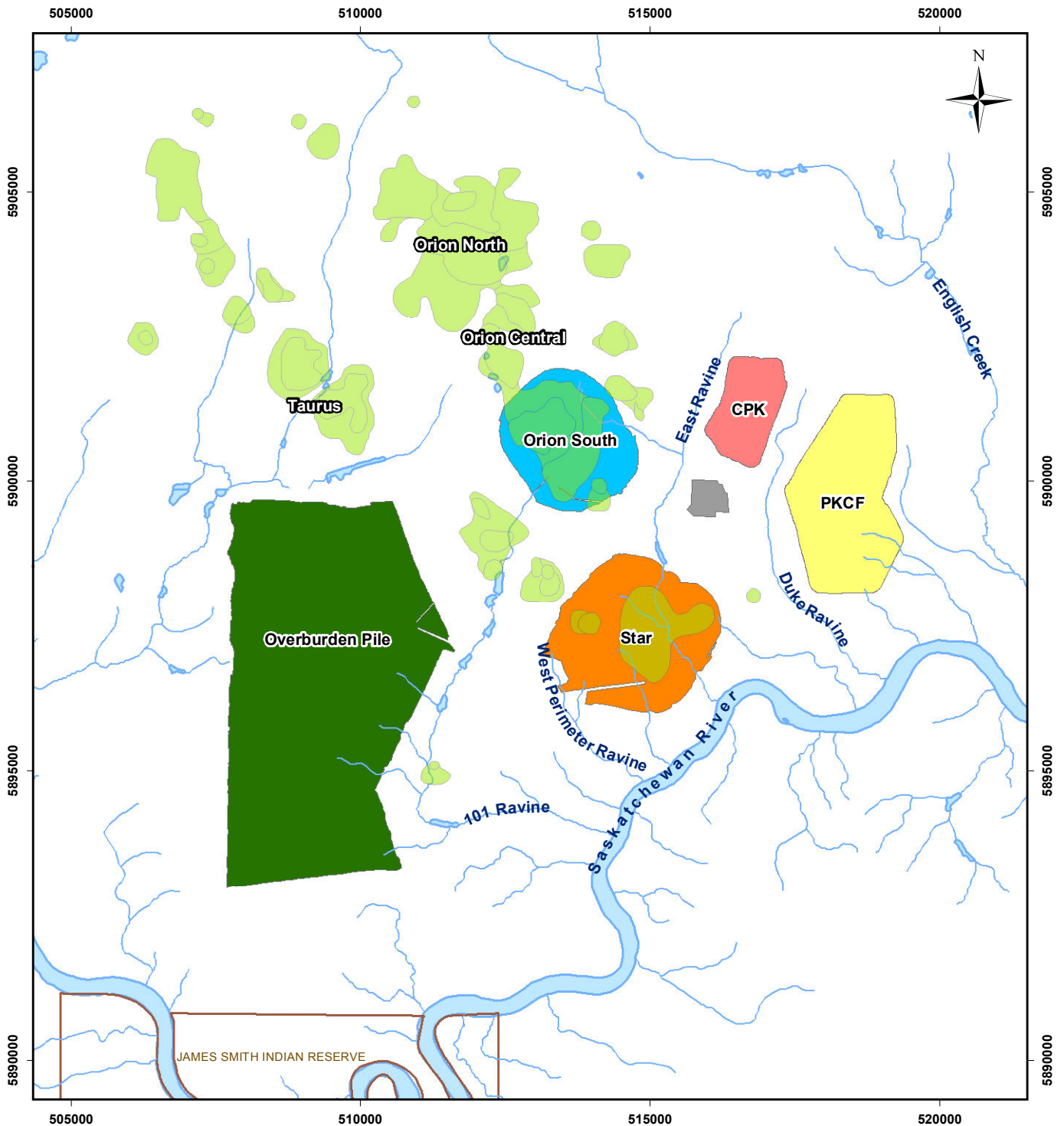


Figure 9.2-2: Relationships in the Evaluation of Linkages between Residual Effects



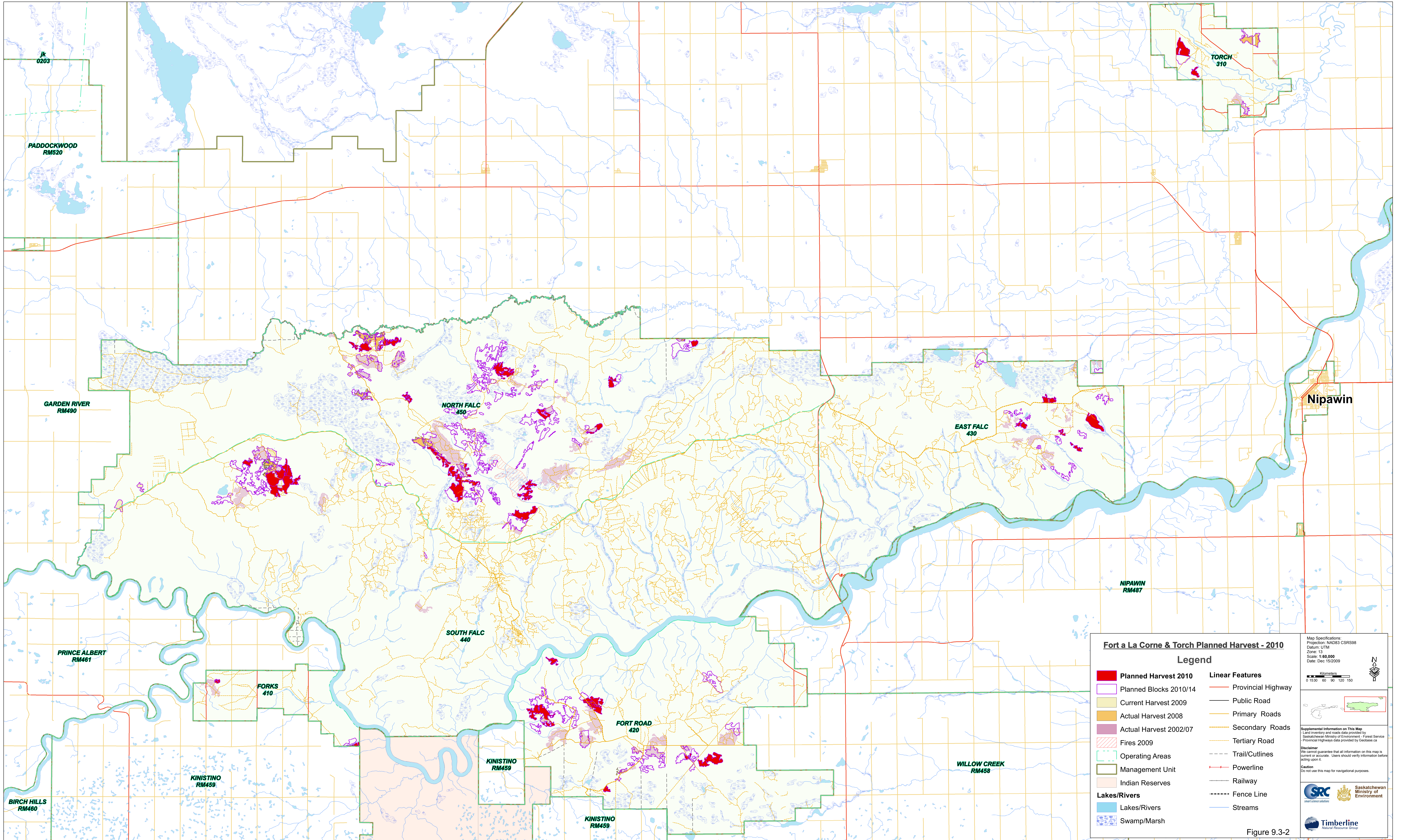
Legend

-  Watercourse
-  Waterbody
-  Indian Reserve
-  Kimberlite Deposit

Reference

Base data: NTS 1:50,000 scale
 Mine facilities: Dated August 07, 2012

CLIENT:			
PROJECT:		Star - Orion South Diamond Project	
		Kimberlite Location	
			
		Figure 9.3-1 DATE: August 2012	
GIS TRACKING NUMBER: 20120807_Kimberlite.mxd		PROJECT No: SX0373302	
PROJECTION & DATUM: UTM Zone 13 NAD27		DRAWN BY: EO	
			



Fort a La Corne & Torch Planned Harvest - 2010

Legend

 Planned Harvest 2010	Linear Features
 Planned Blocks 2010/14	 Provincial Highway
 Current Harvest 2009	 Public Road
 Actual Harvest 2008	 Primary Roads
 Actual Harvest 2002/07	 Secondary Roads
 Fires 2009	 Tertiary Road
 Operating Areas	 Trail/Cutlines
 Management Unit	 Powerline
 Indian Reserves	 Railway
Lakes/Rivers	 Fence Line
 Lakes/Rivers	 Streams
 Swamp/Marsh	

Map Specifications:
 Projection: NAD83 CSRS88
 Datum: UTM
 Zone: 13
 Scale: 1:60,000
 Date: Dec 15/2009

Supplemental Information on This Map:
 Land inventory and roads data provided by Saskatchewan Ministry of Environment - Forest Service
 Provincial Highways data provided by Geobase.ca

Disclaimer:
 We cannot guarantee that all information on this map is current or accurate. Users should verify information before acting upon it.

Caution:
 Do not use this map for navigational purposes.

Logos: SRC (Saskatchewan Resource Centre), Saskatchewan Ministry of Environment, Timberline (Timber Resource Group)

Figure 9.3-2