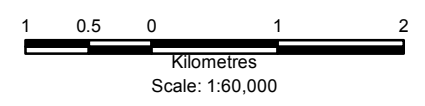


- Legend**
- Watercourse
 - Waterbody
 - Local Study Area
 - Baseline and Inventory Disturbances
 - Project Disturbance (Impact)
 - Burn
 - Harvest/Silviculture
 - Insect/Disease
 - Salvage

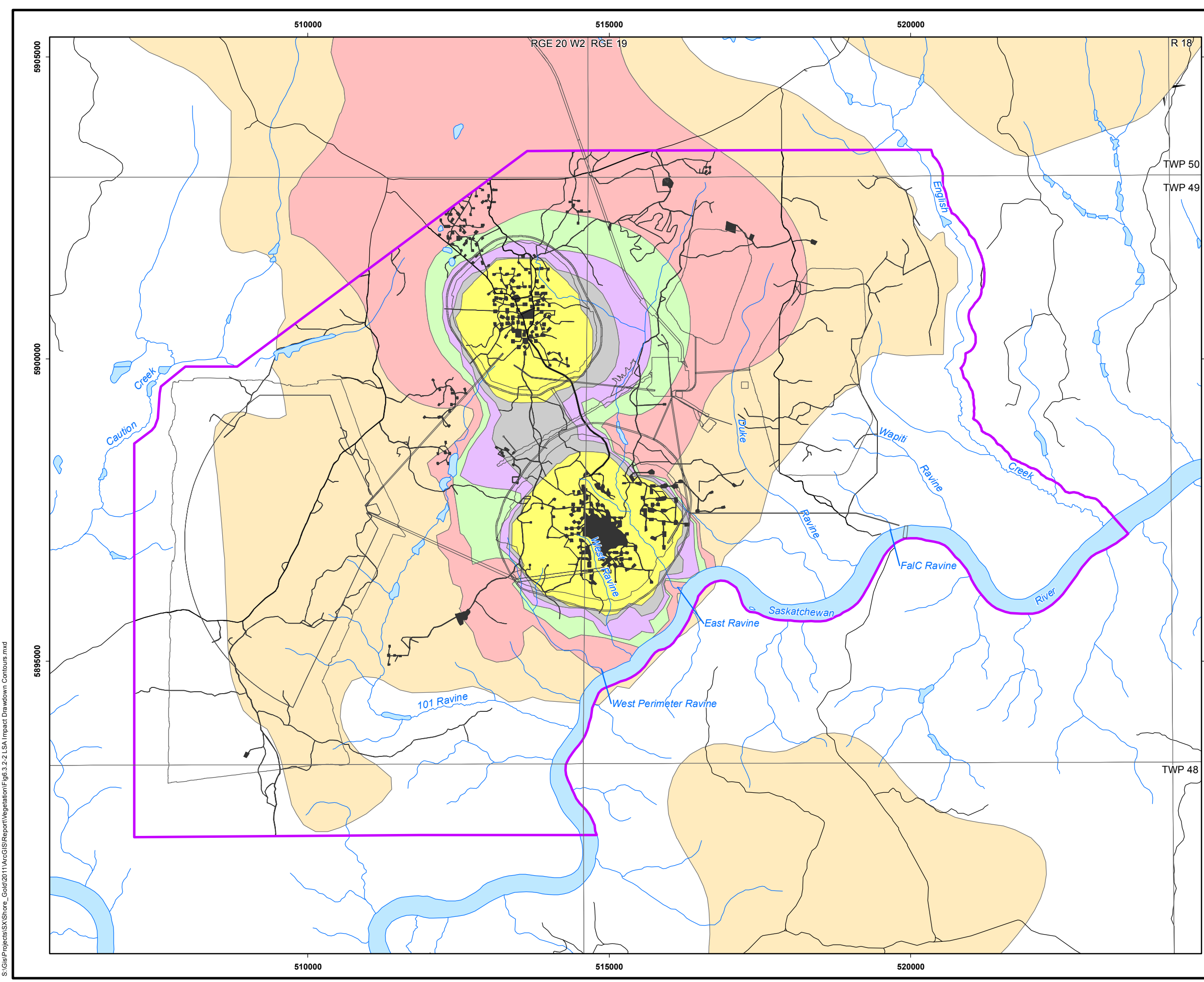
- Vegetation Class**
- BP01
 - BP01a
 - BP02
 - BP03
 - BP04
 - BP05
 - BP06
 - BP07
 - BP09
 - BP10
 - BP11
 - BP12
 - BP14
 - BP15
 - BP16
 - BP18
 - BP18a
 - BP19
 - BP23
 - BP25
 - BP28



Reference
 Base data: NRCan National Road Network
 NTS 1:50,000 scale: GeoSask
 Mine facilities: AMEC dated July 2010
 Saskatchewan Ministry of Environment 2008.

CLIENT: 		
PROJECT: Star - Orion South Diamond Project		
Vegetation Types in the LSA Project Case		
DATE: January 2012	ANALYST: NH	Figure 6.3.2-1
JOB No: SX0373306.10	QA/QC: MY	PDF FILE: Fig6.3.2-1 LSA Impact Veg Classes 12-01-16.pdf
GIS FILE: Fig6.3.2-1 LSA Impact Veg Classes.mxd		
PROJECTION: UTM Zone 13	DATUM: NAD27	

S:\GIS\Projects\SX\Shore_Gold\2011\ArcGIS\Report\Vegetation\Fig6.3.2-1 LSA Impact Veg Classes.mxd



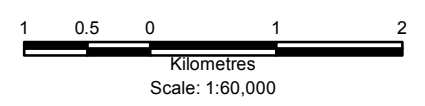
Legend

- Watercourse
- Waterbody
- Local Study Area
- Baseline and Inventory Disturbances
- Project Disturbance (Impact)


Water Table Drawdown Contours (m)

- 0.5-1
- 1-2
- 2-3
- 3-5
- 5-10
- >10

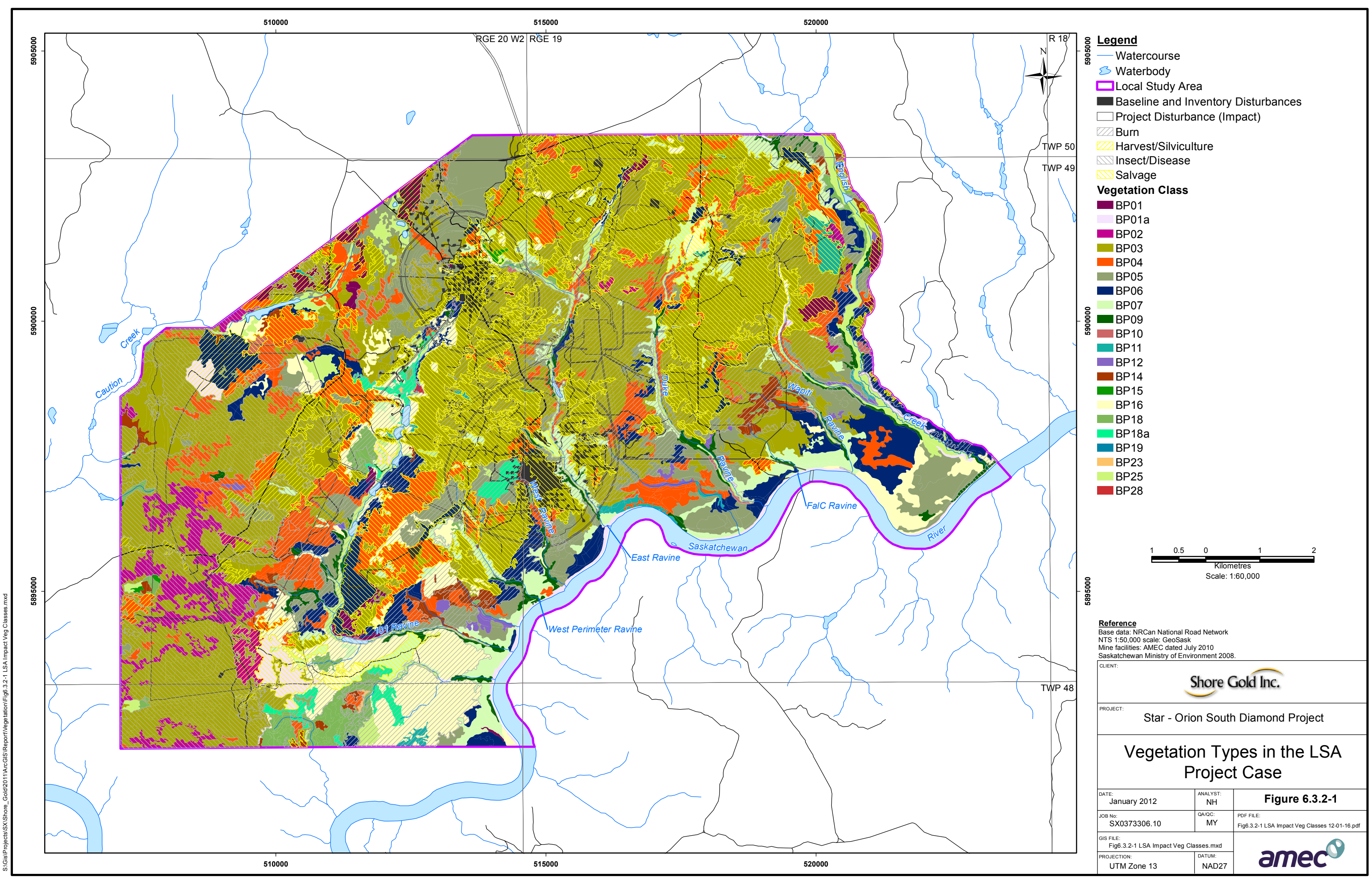
*Based on Pre-feasibility Study



Reference
 Base data: NRCan National Road Network
 NTS 1:50,000 scale: GeoSask
 Mine facilities: AMEC dated July 2010
 Saskatchewan Ministry of Environment 2008.

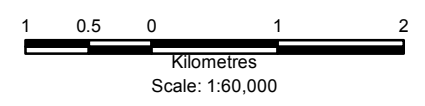
		
PROJECT: Star - Orion South Diamond Project		
<h3 style="margin: 0;">Water Table Drawdown Contours in the LSA Project Case - End of Mining</h3>		
DATE: August 2012	ANALYST: NH	Figure 6.3.2-2
JOB No: SX0373306.10	QA/QC: MY	PDF FILE: Fig6.3.2-2 LSA Impact Drawdown Contours 12-08-09.pdf
GIS FILE: Fig6.3.2-2 LSA Impact Drawdown Contours.mxd		
PROJECTION: UTM Zone 13	DATUM: NAD27	

S:\GIS\Projects\SX\Shore_Gold\2011\ArcGIS\Report\Vegetation\Fig6.3.2-2 LSA Impact Drawdown Contours.mxd



- Legend**
- Watercourse
 - Waterbody
 - Local Study Area
 - Baseline and Inventory Disturbances
 - Project Disturbance (Impact)
 - Burn
 - Harvest/Silviculture
 - Insect/Disease
 - Salvage

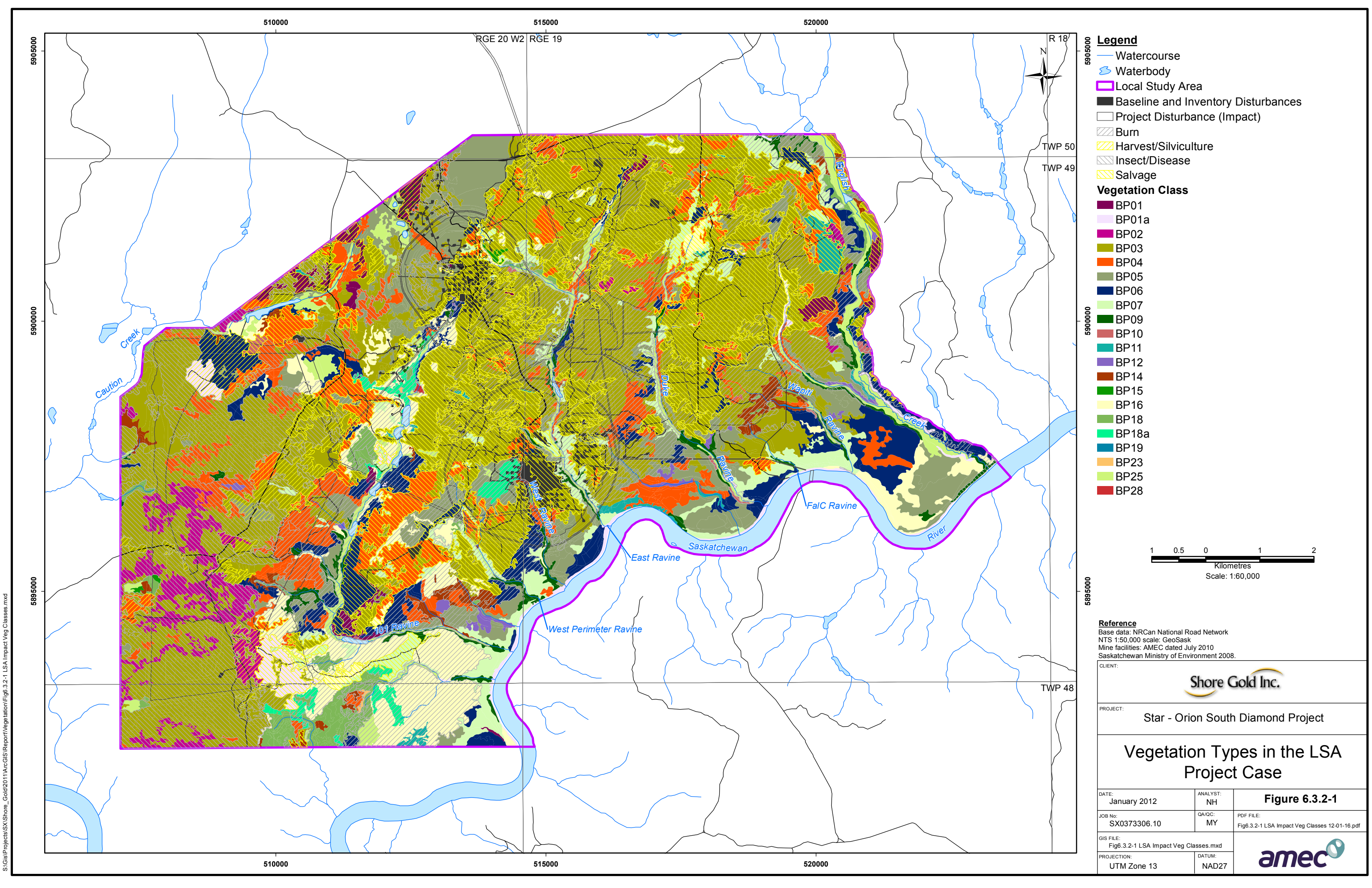
- Vegetation Class**
- BP01
 - BP01a
 - BP02
 - BP03
 - BP04
 - BP05
 - BP06
 - BP07
 - BP09
 - BP10
 - BP11
 - BP12
 - BP14
 - BP15
 - BP16
 - BP18
 - BP18a
 - BP19
 - BP23
 - BP25
 - BP28



Reference
 Base data: NRCan National Road Network
 NTS 1:50,000 scale: GeoSask
 Mine facilities: AMEC dated July 2010
 Saskatchewan Ministry of Environment 2008.

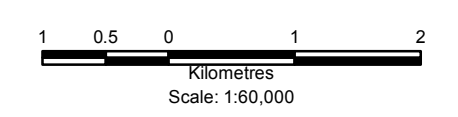
CLIENT: 		
PROJECT: Star - Orion South Diamond Project		
Vegetation Types in the LSA Project Case		
DATE: January 2012	ANALYST: NH	Figure 6.3.2-1
JOB No: SX0373306.10	QA/QC: MY	PDF FILE: Fig6.3.2-1 LSA Impact Veg Classes 12-01-16.pdf
GIS FILE: Fig6.3.2-1 LSA Impact Veg Classes.mxd		
PROJECTION: UTM Zone 13	DATUM: NAD27	

S:\GIS\Projects\SX\Shore_Gold\2011\ArcGIS\Report\Vegetation\Fig6.3.2-1 LSA Impact Veg Classes.mxd



- Legend**
- Watercourse
 - Waterbody
 - Local Study Area
 - Baseline and Inventory Disturbances
 - Project Disturbance (Impact)
 - Burn
 - Harvest/Silviculture
 - Insect/Disease
 - Salvage

- Vegetation Class**
- BP01
 - BP01a
 - BP02
 - BP03
 - BP04
 - BP05
 - BP06
 - BP07
 - BP09
 - BP10
 - BP11
 - BP12
 - BP14
 - BP15
 - BP16
 - BP18
 - BP18a
 - BP19
 - BP23
 - BP25
 - BP28

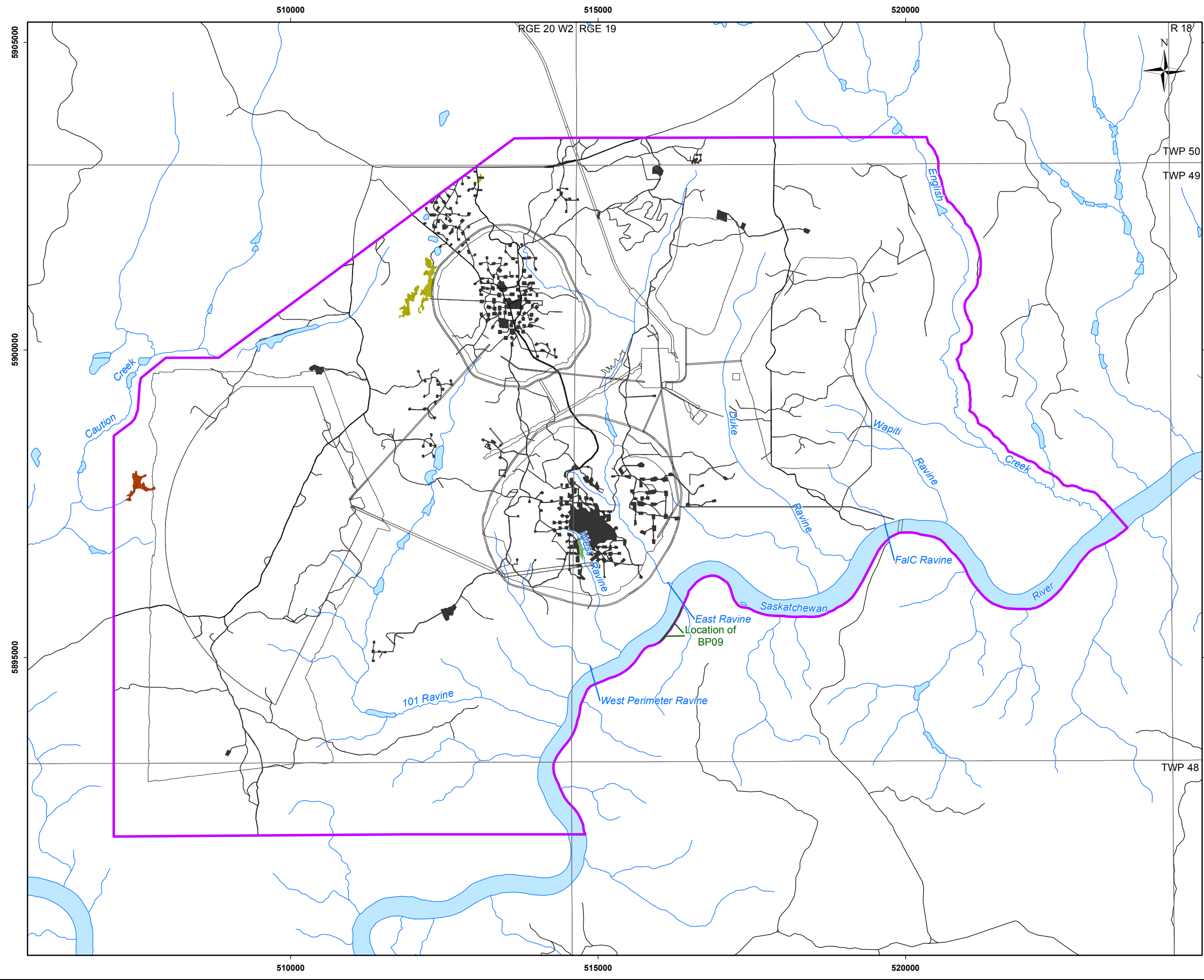


Reference
 Base data: NRCan National Road Network
 NTS 1:50,000 scale: GeoSask
 Mine facilities: AMEC dated July 2010
 Saskatchewan Ministry of Environment 2008.

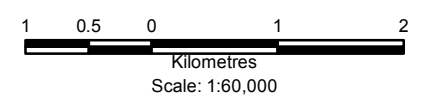
CLIENT: 		
PROJECT: Star - Orion South Diamond Project		
Vegetation Types in the LSA Project Case		
DATE: January 2012	ANALYST: NH	Figure 6.3.2-1
JOB No: SX0373306.10	QA/QC: MY	PDF FILE: Fig6.3.2-1 LSA Impact Veg Classes 12-01-16.pdf
GIS FILE: Fig6.3.2-1 LSA Impact Veg Classes.mxd		
PROJECTION: UTM Zone 13	DATUM: NAD27	

S:\GIS\Projects\SX\Shore_Gold\2011\ArcGIS\Report\Vegetation\Fig6.3.2-1 LSA Impact Veg Classes.mxd

S:\GIS\Projects\SX\Shore_Gold\2011\ArcGIS\Report\Vegetation\Fig6.3.2-3_LSA_Impact_Old_Growth.mxd

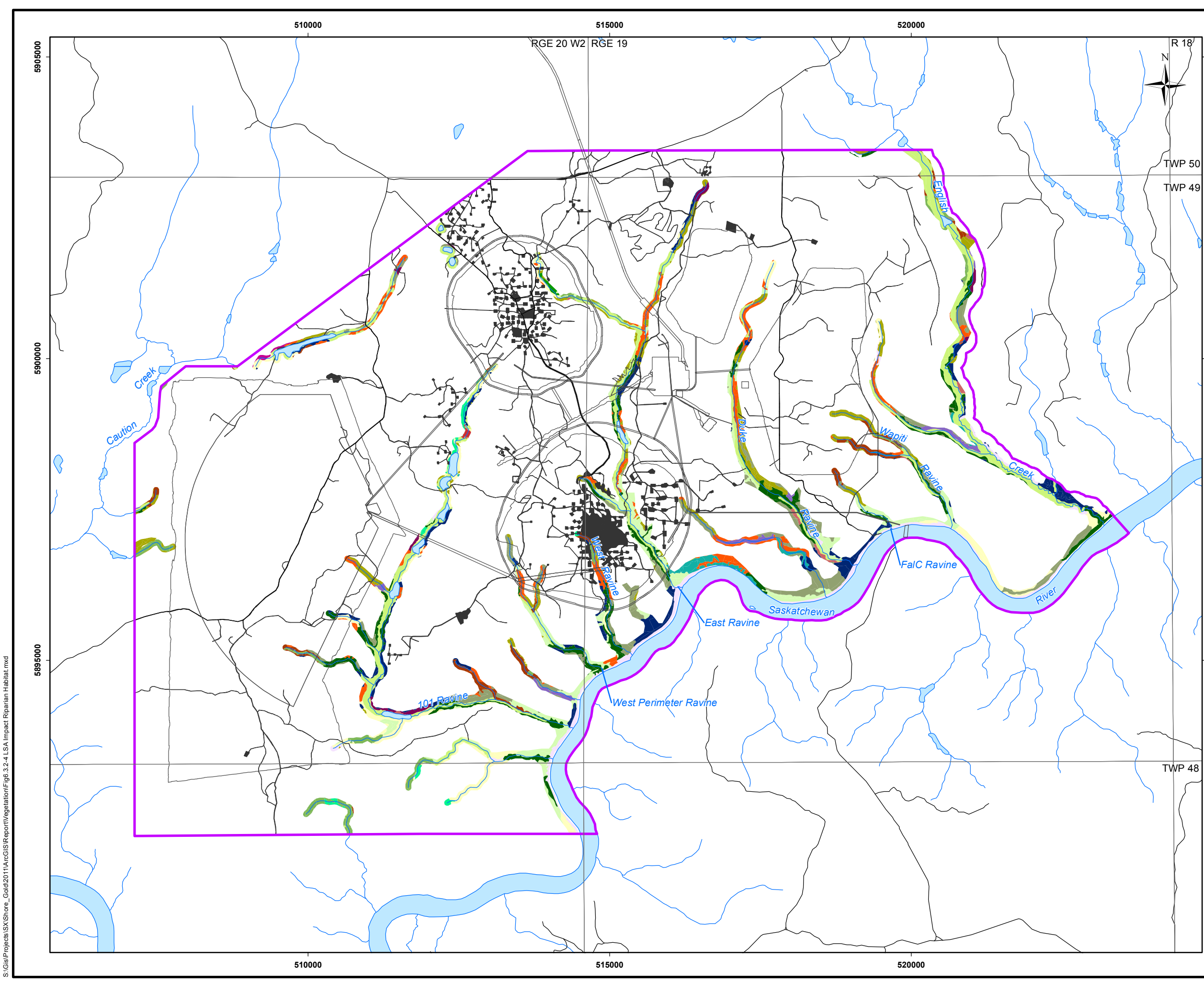


- Legend**
- Watercourse
 - Waterbody
 - Local Study Area
 - Baseline and Inventory Disturbances
 - Project Disturbance (Impact)
- Vegetation Class**
- BP03
 - BP09
 - BP14
 - BP18



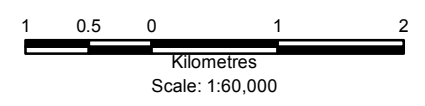
Reference
 Base data: NRCan National Road Network
 NTS 1:50,000 scale: GeoSask
 Mine facilities: AMEC dated July 2010
 Saskatchewan Ministry of Environment 2008.

CLIENT: 		
PROJECT: Star - Orion South Diamond Project		
Old Growth Forest in the LSA Project Case		
DATE: January 2012	ANALYST: NH	Figure 6.3.2-3
JOB No: SX0373306.10	QA/QC: MY	PDF FILE: Fig6.3.2-3 LSA Impact Old Growth 12-01-16.pdf
GIS FILE: Fig6.3.2-3 LSA Impact Old Growth.mxd		
PROJECTION: UTM Zone 13	DATUM: NAD27	



- Legend**
- Watercourse
 - Waterbody
 - Local Study Area
 - Baseline and Inventory Disturbances
 - Project Disturbance (Impact)

- Vegetation Class**
- BP01
 - BP01a
 - BP02
 - BP03
 - BP04
 - BP05
 - BP06
 - BP07
 - BP09
 - BP10
 - BP11
 - BP12
 - BP14
 - BP15
 - BP16
 - BP18
 - BP18a
 - BP19
 - BP23
 - BP25
 - BP28

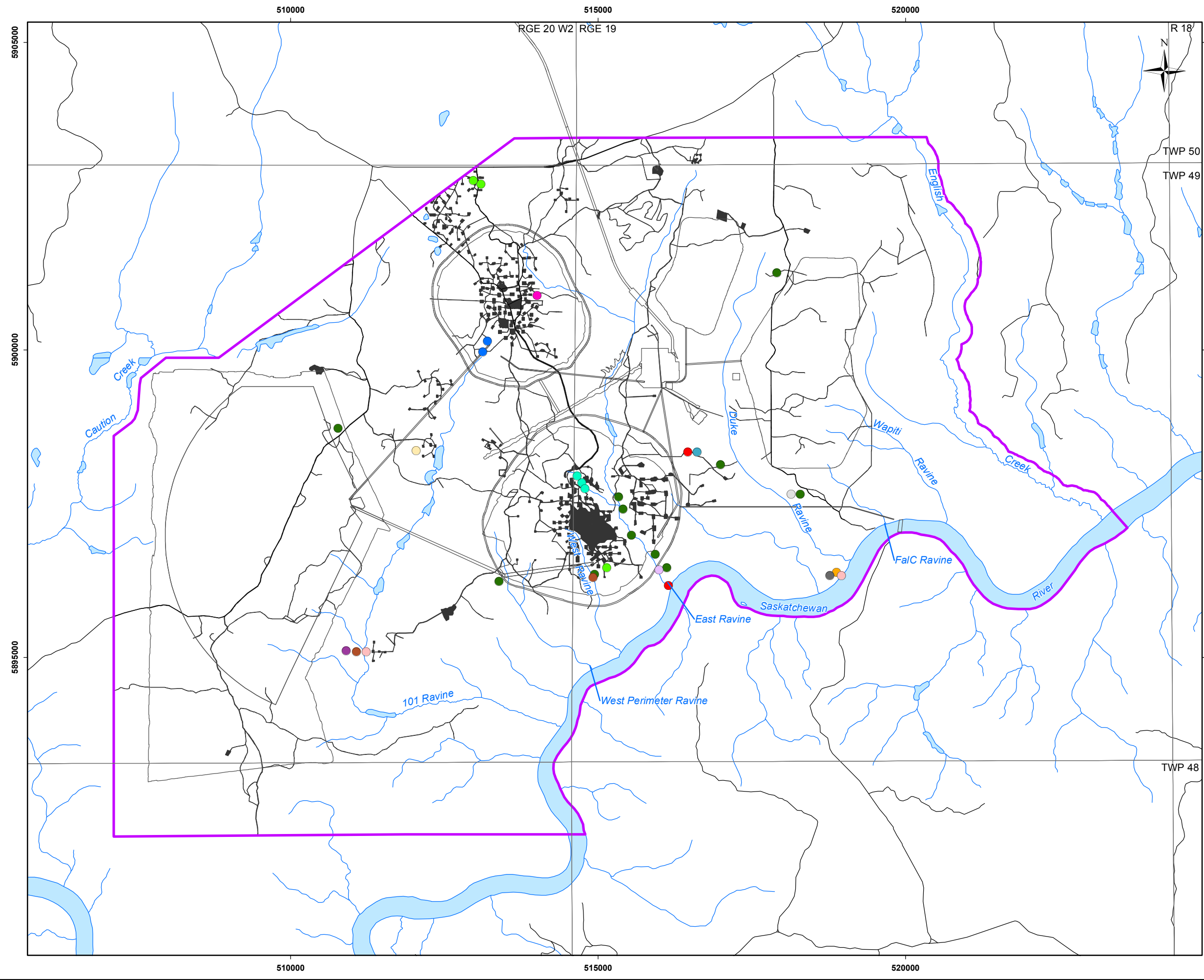


Reference
 Base data: NRCan National Road Network
 NTS 1:50,000 scale: GeoSask
 Mine facilities: AMEC dated July 2010
 Saskatchewan Ministry of Environment 2008.

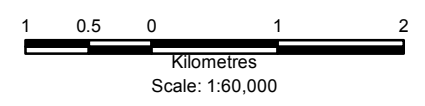
CLIENT: 		
PROJECT: Star - Orion South Diamond Project		
Riparian Habitat in the LSA Project Case		
DATE: January 2012	ANALYST: NH	Figure 6.3.2-4
JOB No: SX0373306.10	QA/QC: MY	PDF FILE: Fig6.3.2-4 LSA Impact Riparian Habitat 12-01-16.pdf
GIS FILE: Fig6.3.2-4 LSA Impact Riparian Habitat.mxd		
PROJECTION: UTM Zone 13	DATUM: NAD27	

S:\GIS\Projects\SX\Shore_Gold\2011\ArcGIS\Report\Vegetation\Fig.3.2-4 LSA Impact Riparian Habitat.mxd

S:\GIS\Projects\SI\Shore_Gold\2011\ArcGIS\Report\Vegetation\Fig6.3.2-5 LSA Impact Rare Plants.mxd



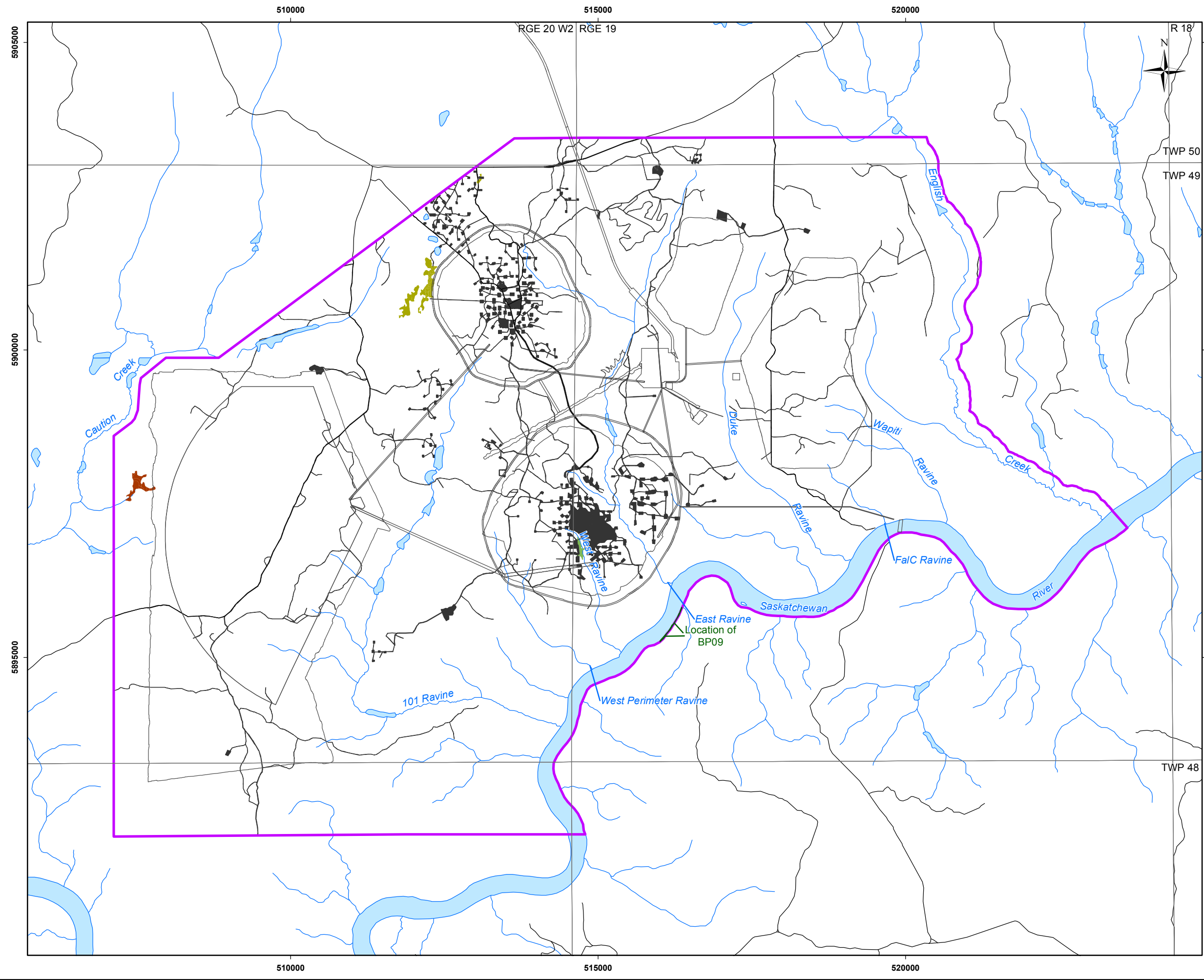
- Legend**
- Watercourse
 - Waterbody
 - Local Study Area
 - Baseline and Inventory Disturbances
 - Project Disturbance (Impact)
- Rare Plants**
- *Calamagrostis lapponica*
 - *Carex hystericina*
 - *Carex pseudocyperus*
 - *Chenopodium desiccatum*
 - *Chenopodium pratericola* ssp. *Dessicatum*
 - *Coeloglossum viride* var. *virescens*
 - *Cypripedium parviflorum* var. *makasin*
 - *Leucophysalis grandiflora*
 - *Lilium philadelphicum* var. *andinum*
 - *Listera cordata* var. *cordata*
 - *Lonicera oblongifolia*
 - *Polygala paucifolia*
 - *Polygala senega*
 - *Scirpus pallidus*
 - *Thalictrum occidentale* var. *occidentale*



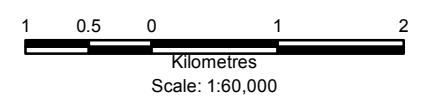
Reference
 Base data: NRCan National Road Network
 NTS 1:50,000 scale: GeoSask
 Mine facilities: AMEC dated July 2010
 Saskatchewan Ministry of Environment 2008.

CLIENT: 		
PROJECT: Star - Orion South Diamond Project		
Rare Plants in the LSA Project Case		
DATE: January 2012	ANALYST: NH	Figure 6.3.2-5
JOB No: SX0373306.10	QA/QC: MY	PDF FILE: Fig6.3.2-5 LSA Impact Rare Plants 12-01-16.pdf
GIS FILE: Fig6.3.2-5 LSA Impact Rare Plants.mxd		
PROJECTION: UTM Zone 13	DATUM: NAD27	

S:\GIS\Projects\SX\Shore_Gold\2011\ArcGIS\Report\Vegetation\Fig6.3.2-3_LSA_Impact_Old_Growth.mxd

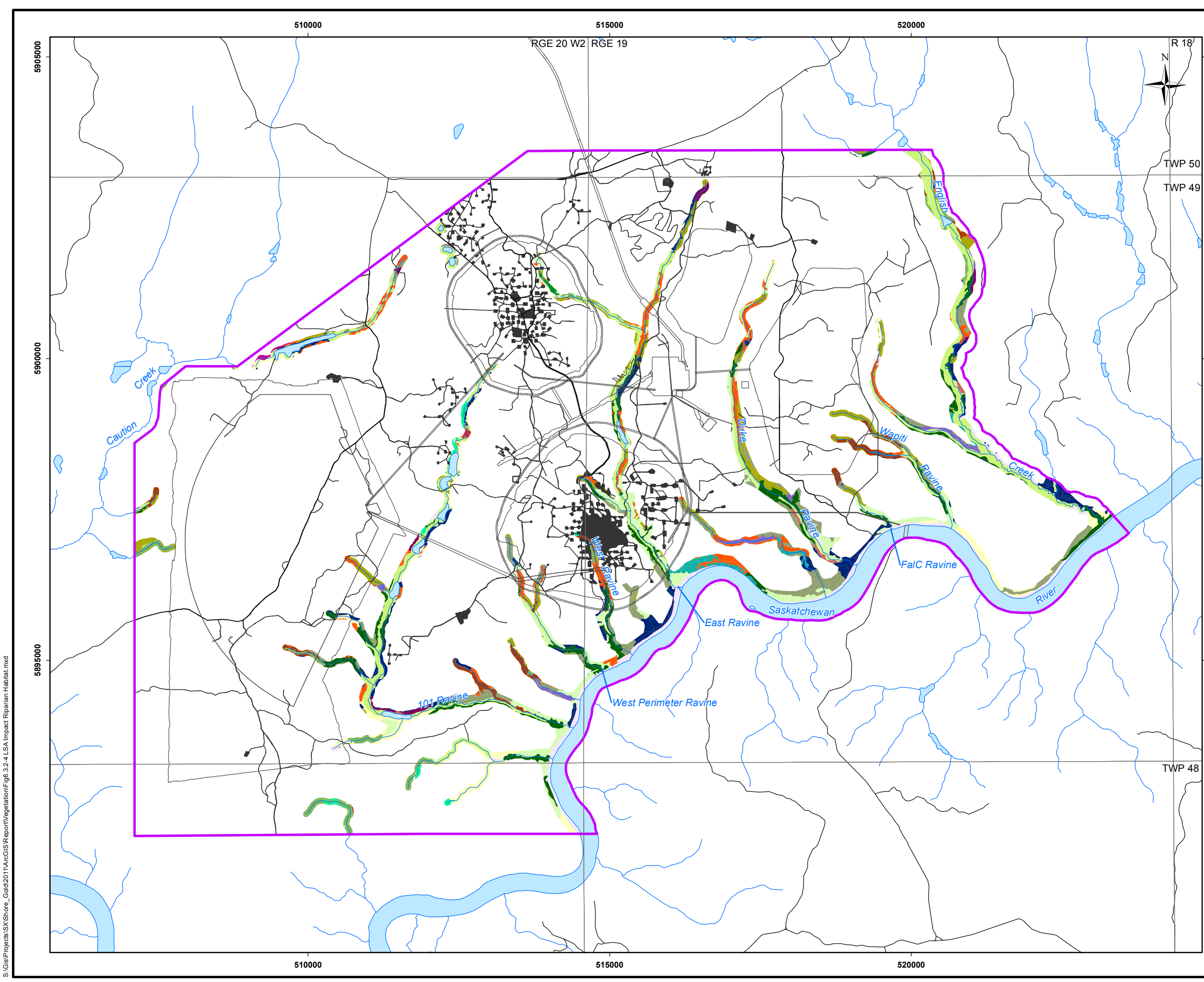


- Legend**
- Watercourse
 - Waterbody
 - Local Study Area
 - Baseline and Inventory Disturbances
 - Project Disturbance (Impact)
- Vegetation Class**
- BP03
 - BP09
 - BP14
 - BP18



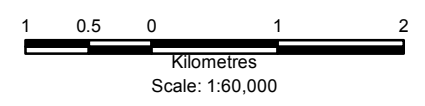
Reference
 Base data: NRCan National Road Network
 NTS 1:50,000 scale: GeoSask
 Mine facilities: AMEC dated July 2010
 Saskatchewan Ministry of Environment 2008.

CLIENT: 		
PROJECT: Star - Orion South Diamond Project		
Old Growth Forest in the LSA Project Case		
DATE: January 2012	ANALYST: NH	Figure 6.3.2-3
JOB No: SX0373306.10	QA/QC: MY	PDF FILE: Fig6.3.2-3 LSA Impact Old Growth 12-01-16.pdf
GIS FILE: Fig6.3.2-3 LSA Impact Old Growth.mxd		
PROJECTION: UTM Zone 13	DATUM: NAD27	



- Legend**
- Watercourse
 - Waterbody
 - Local Study Area
 - Baseline and Inventory Disturbances
 - Project Disturbance (Impact)

- Vegetation Class**
- BP01
 - BP01a
 - BP02
 - BP03
 - BP04
 - BP05
 - BP06
 - BP07
 - BP09
 - BP10
 - BP11
 - BP12
 - BP14
 - BP15
 - BP16
 - BP18
 - BP18a
 - BP19
 - BP23
 - BP25
 - BP28

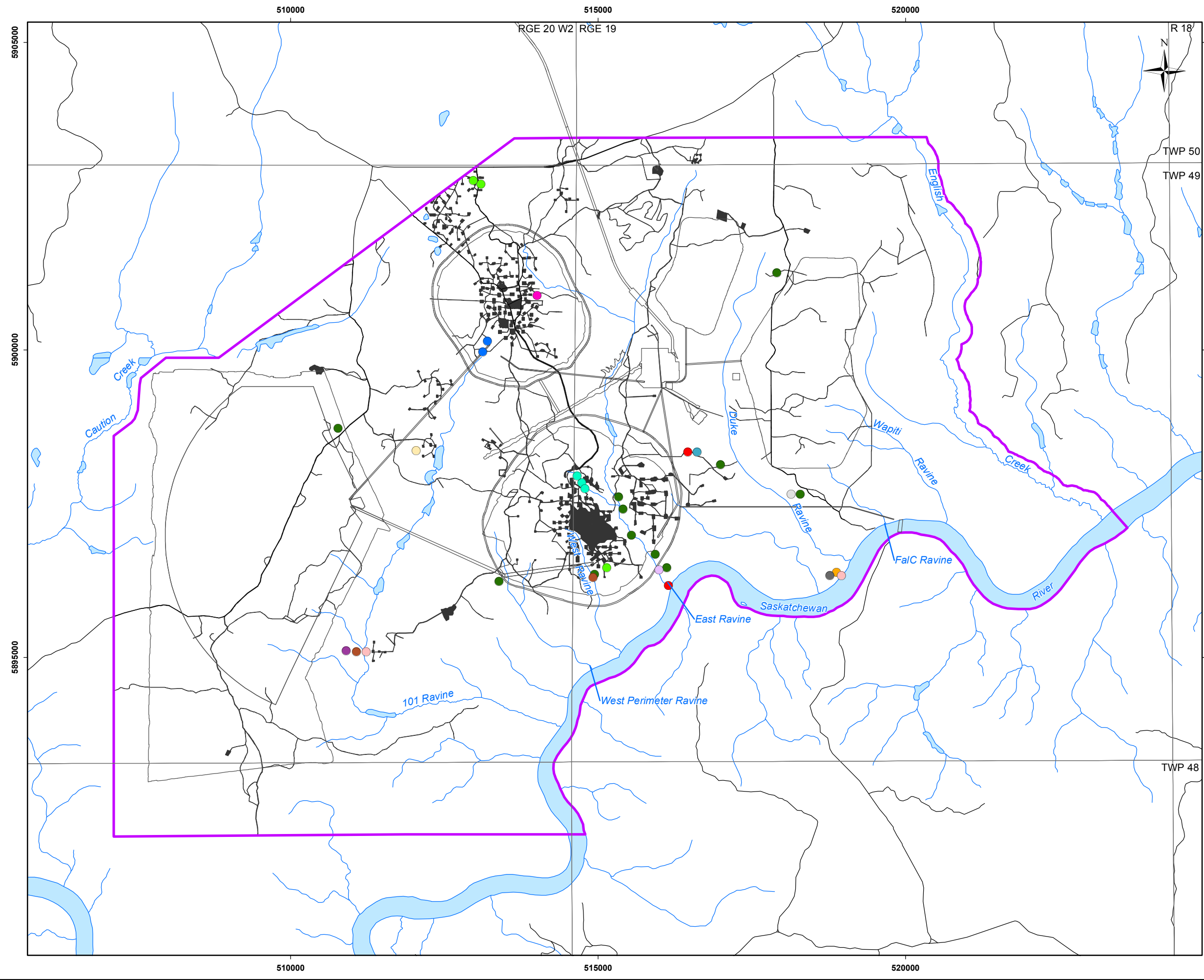


Reference
 Base data: NRCan National Road Network
 NTS 1:50,000 scale: GeoSask
 Mine facilities: AMEC dated July 2010
 Saskatchewan Ministry of Environment 2008.

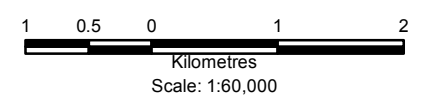
CLIENT: 		
PROJECT: Star - Orion South Diamond Project		
Riparian Habitat in the LSA Project Case		
DATE: January 2012	ANALYST: NH	Figure 6.3.2-4
JOB No: SX0373306.10	QA/QC: MY	PDF FILE: Fig6.3.2-4 LSA Impact Riparian Habitat 12-01-16.pdf
GIS FILE: Fig6.3.2-4 LSA Impact Riparian Habitat.mxd		
PROJECTION: UTM Zone 13	DATUM: NAD27	

S:\GIS\Projects\SX\Shore_Gold\2011\ArcGIS\Report\Vegetation\Fig.3.2-4 LSA Impact Riparian Habitat.mxd

S:\GIS\Projects\SI\Shore_Gold\2011\ArcGIS\Report\Vegetation\Fig6.3.2-5 LSA Impact Rare Plants.mxd

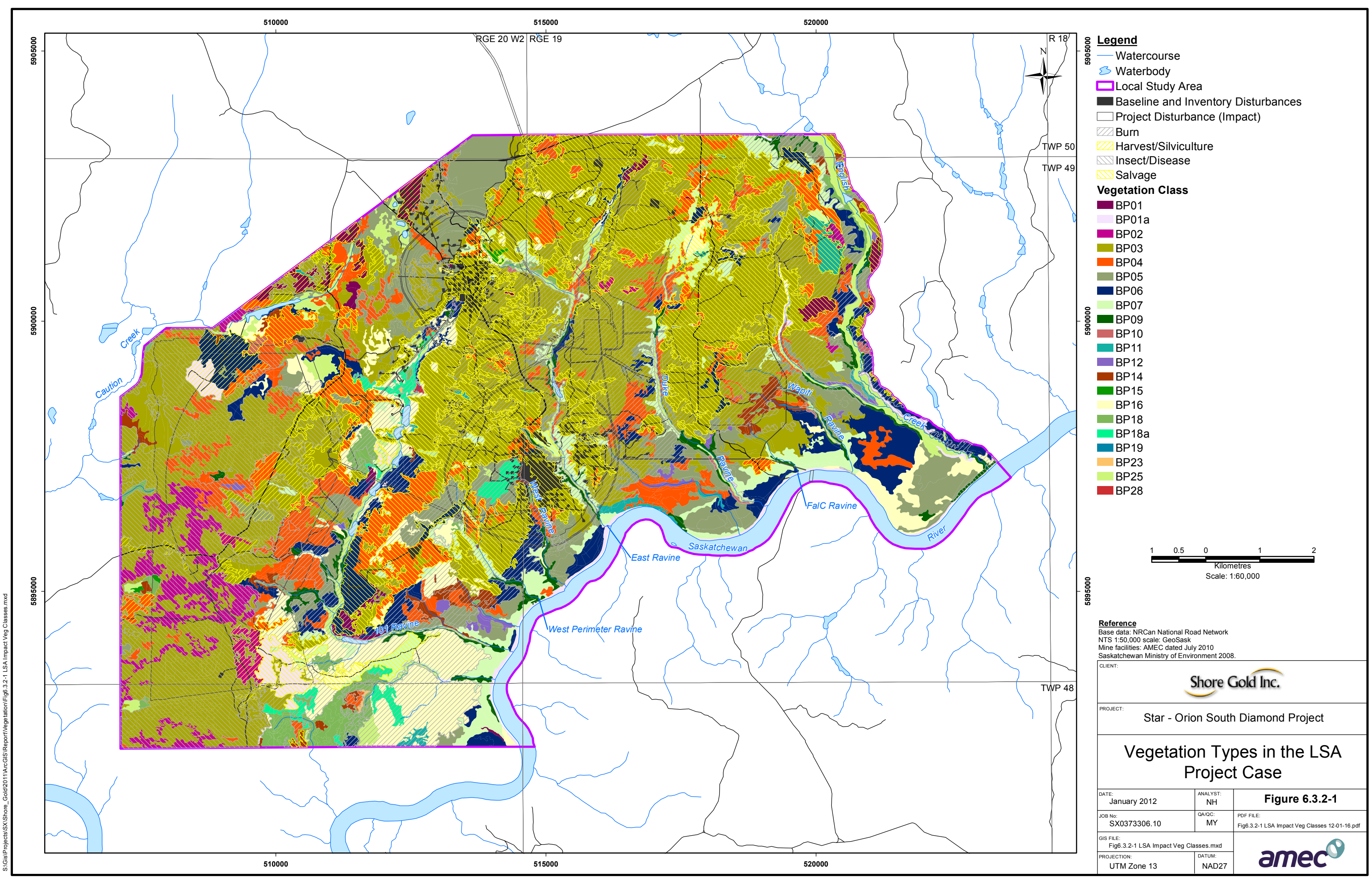


- Legend**
- Watercourse
 - Waterbody
 - Local Study Area
 - Baseline and Inventory Disturbances
 - Project Disturbance (Impact)
- Rare Plants**
- *Calamagrostis lapponica*
 - *Carex hystericina*
 - *Carex pseudocyperus*
 - *Chenopodium desiccatum*
 - *Chenopodium pratericola* ssp. *Dessicatum*
 - *Coeloglossum viride* var. *virescens*
 - *Cypripedium parviflorum* var. *makasin*
 - *Leucophysalis grandiflora*
 - *Lilium philadelphicum* var. *andinum*
 - *Listera cordata* var. *cordata*
 - *Lonicera oblongifolia*
 - *Polygala paucifolia*
 - *Polygala senega*
 - *Scirpus pallidus*
 - *Thalictrum occidentale* var. *occidentale*



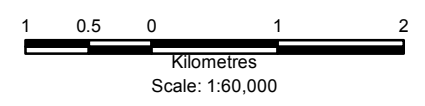
Reference
 Base data: NRCan National Road Network
 NTS 1:50,000 scale: GeoSask
 Mine facilities: AMEC dated July 2010
 Saskatchewan Ministry of Environment 2008.

CLIENT: 		
PROJECT: Star - Orion South Diamond Project		
Rare Plants in the LSA Project Case		
DATE: January 2012	ANALYST: NH	Figure 6.3.2-5
JOB No: SX0373306.10	QA/QC: MY	PDF FILE: Fig6.3.2-5 LSA Impact Rare Plants 12-01-16.pdf
GIS FILE: Fig6.3.2-5 LSA Impact Rare Plants.mxd		
PROJECTION: UTM Zone 13	DATUM: NAD27	



- Legend**
- Watercourse
 - Waterbody
 - Local Study Area
 - Baseline and Inventory Disturbances
 - Project Disturbance (Impact)
 - Burn
 - Harvest/Silviculture
 - Insect/Disease
 - Salvage

- Vegetation Class**
- BP01
 - BP01a
 - BP02
 - BP03
 - BP04
 - BP05
 - BP06
 - BP07
 - BP09
 - BP10
 - BP11
 - BP12
 - BP14
 - BP15
 - BP16
 - BP18
 - BP18a
 - BP19
 - BP23
 - BP25
 - BP28

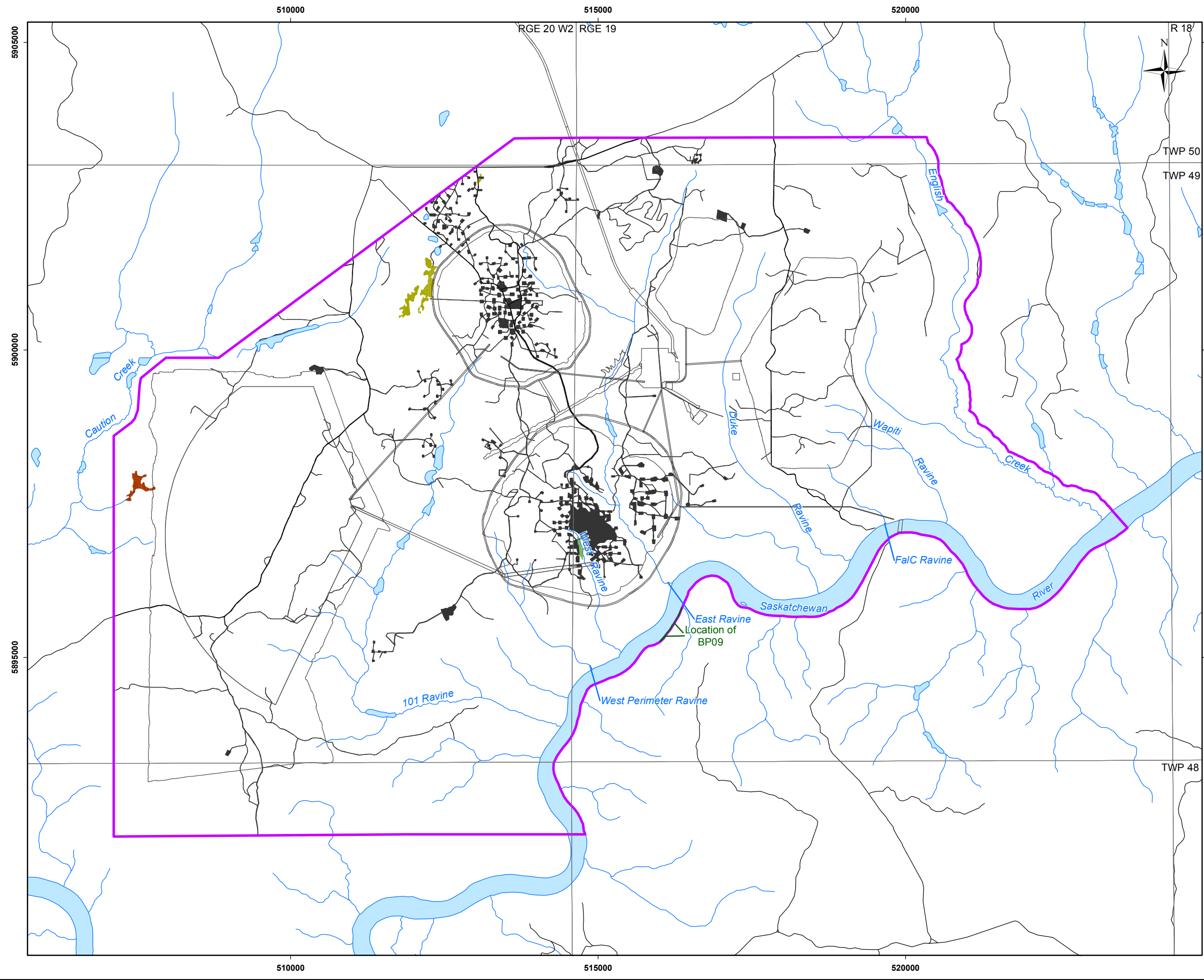


Reference
 Base data: NRCan National Road Network
 NTS 1:50,000 scale: GeoSask
 Mine facilities: AMEC dated July 2010
 Saskatchewan Ministry of Environment 2008.

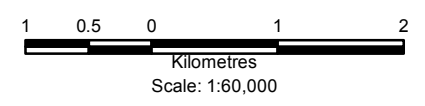
CLIENT: 		
PROJECT: Star - Orion South Diamond Project		
Vegetation Types in the LSA Project Case		
DATE: January 2012	ANALYST: NH	Figure 6.3.2-1
JOB No: SX0373306.10	QA/QC: MY	PDF FILE: Fig6.3.2-1 LSA Impact Veg Classes 12-01-16.pdf
GIS FILE: Fig6.3.2-1 LSA Impact Veg Classes.mxd		
PROJECTION: UTM Zone 13	DATUM: NAD27	

S:\GIS\Projects\SX\Shore_Gold\2011\ArcGIS\Report\Vegetation\Fig6.3.2-1 LSA Impact Veg Classes.mxd

S:\GIS\Projects\SX\Shore_Gold\2011\ArcGIS\Report\Vegetation\Fig6.3.2-3_LSA_Impact_Old_Growth.mxd

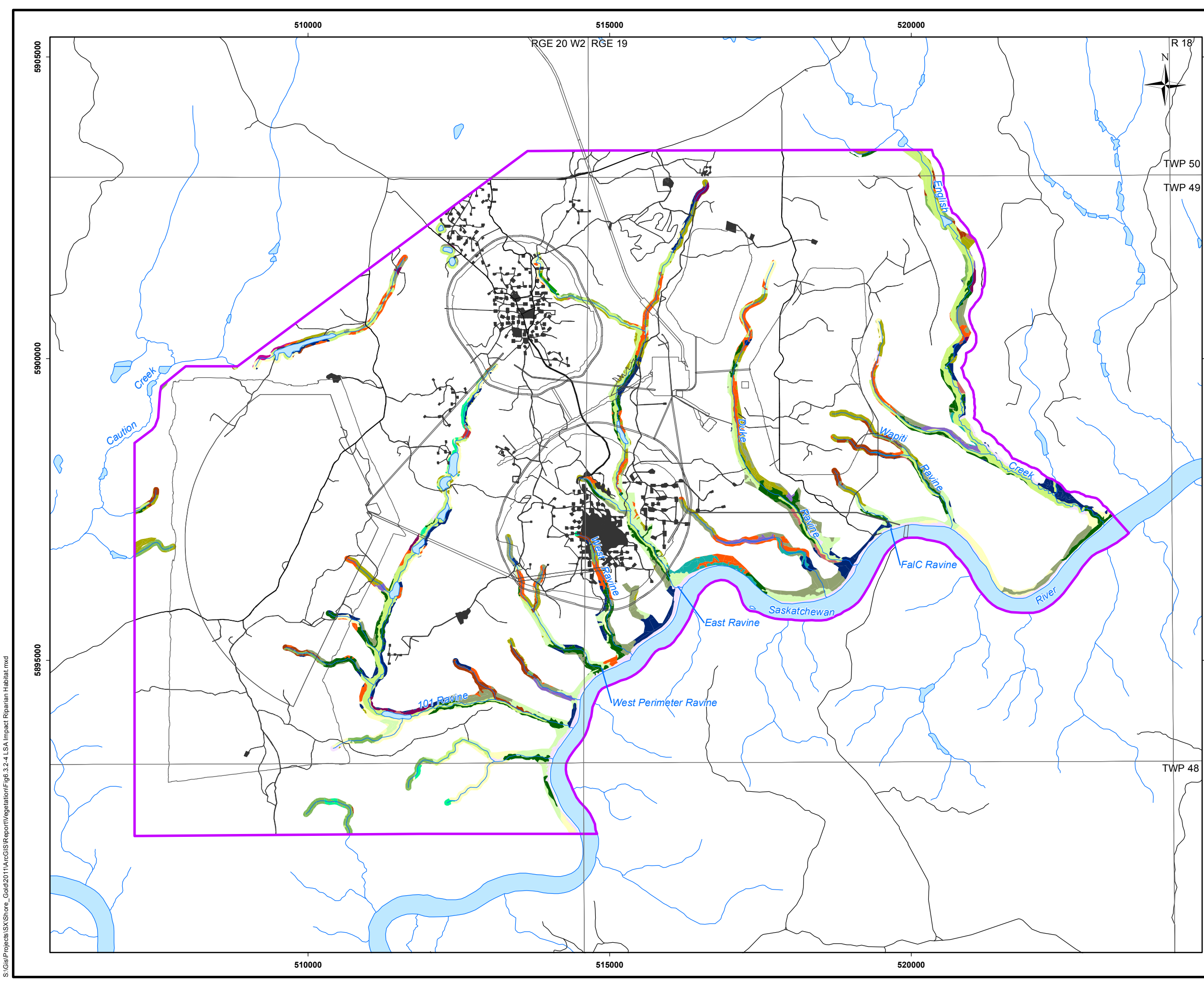


- Legend**
- Watercourse
 - Waterbody
 - Local Study Area
 - Baseline and Inventory Disturbances
 - Project Disturbance (Impact)
- Vegetation Class**
- BP03
 - BP09
 - BP14
 - BP18



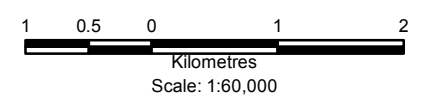
Reference
 Base data: NRCan National Road Network
 NTS 1:50,000 scale: GeoSask
 Mine facilities: AMEC dated July 2010
 Saskatchewan Ministry of Environment 2008.

CLIENT: 		
PROJECT: Star - Orion South Diamond Project		
Old Growth Forest in the LSA Project Case		
DATE: January 2012	ANALYST: NH	Figure 6.3.2-3
JOB No: SX0373306.10	QA/QC: MY	PDF FILE: Fig6.3.2-3 LSA Impact Old Growth 12-01-16.pdf
GIS FILE: Fig6.3.2-3 LSA Impact Old Growth.mxd		
PROJECTION: UTM Zone 13	DATUM: NAD27	



- Legend**
- Watercourse
 - Waterbody
 - Local Study Area
 - Baseline and Inventory Disturbances
 - Project Disturbance (Impact)

- Vegetation Class**
- BP01
 - BP01a
 - BP02
 - BP03
 - BP04
 - BP05
 - BP06
 - BP07
 - BP09
 - BP10
 - BP11
 - BP12
 - BP14
 - BP15
 - BP16
 - BP18
 - BP18a
 - BP19
 - BP23
 - BP25
 - BP28

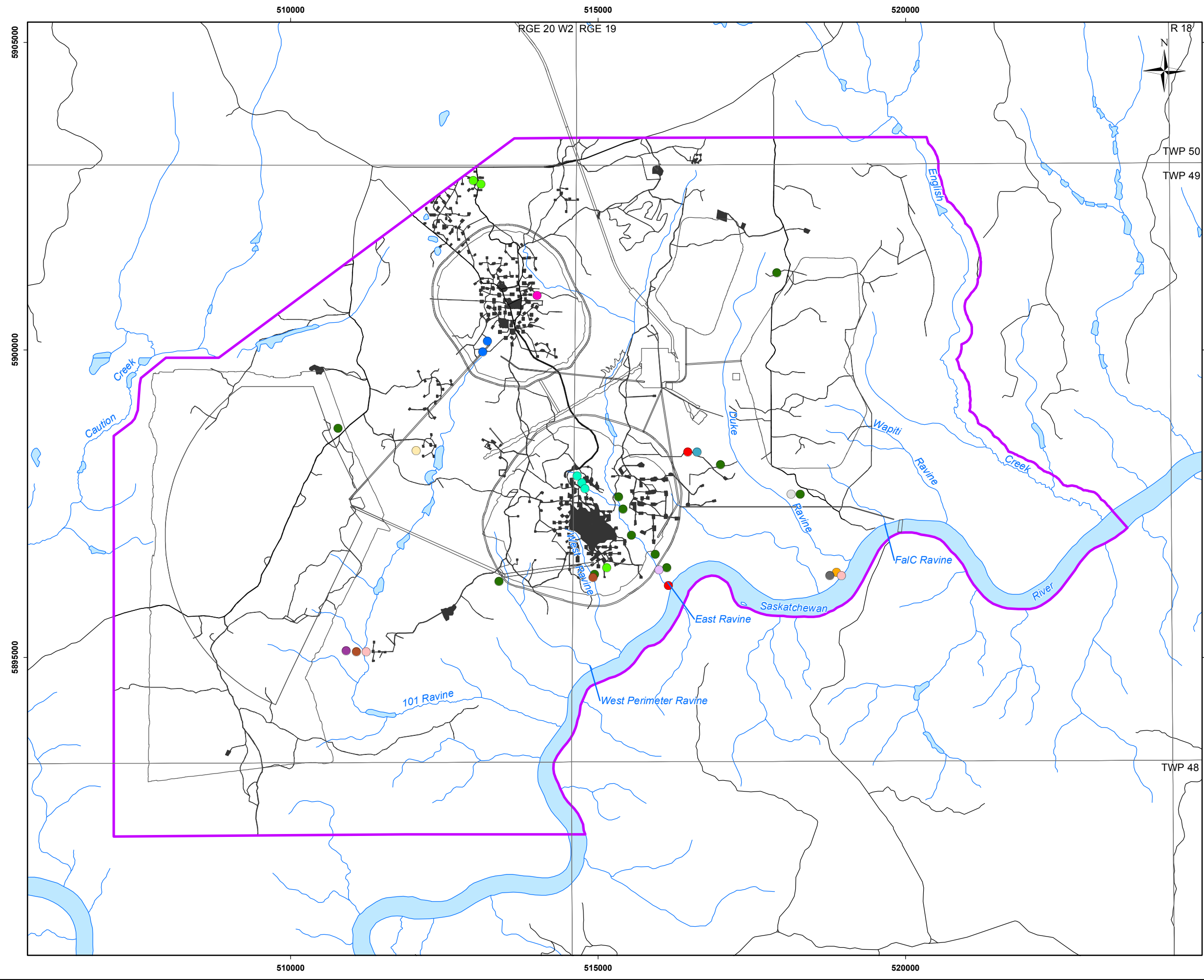


Reference
 Base data: NRCan National Road Network
 NTS 1:50,000 scale: GeoSask
 Mine facilities: AMEC dated July 2010
 Saskatchewan Ministry of Environment 2008.

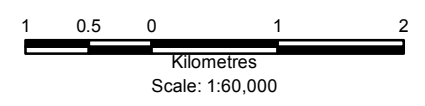
CLIENT: 		
PROJECT: Star - Orion South Diamond Project		
Riparian Habitat in the LSA Project Case		
DATE: January 2012	ANALYST: NH	Figure 6.3.2-4
JOB No: SX0373306.10	QA/QC: MY	PDF FILE: Fig6.3.2-4 LSA Impact Riparian Habitat 12-01-16.pdf
GIS FILE: Fig6.3.2-4 LSA Impact Riparian Habitat.mxd		
PROJECTION: UTM Zone 13	DATUM: NAD27	

S:\GIS\Projects\SX\Shore_Gold\2011\ArcGIS\Report\Vegetation\Fig.3.2-4 LSA Impact Riparian Habitat.mxd

S:\GIS\Projects\SI\Shore_Gold\2011\ArcGIS\Report\Vegetation\Fig6.3.2-5 LSA Impact Rare Plants.mxd



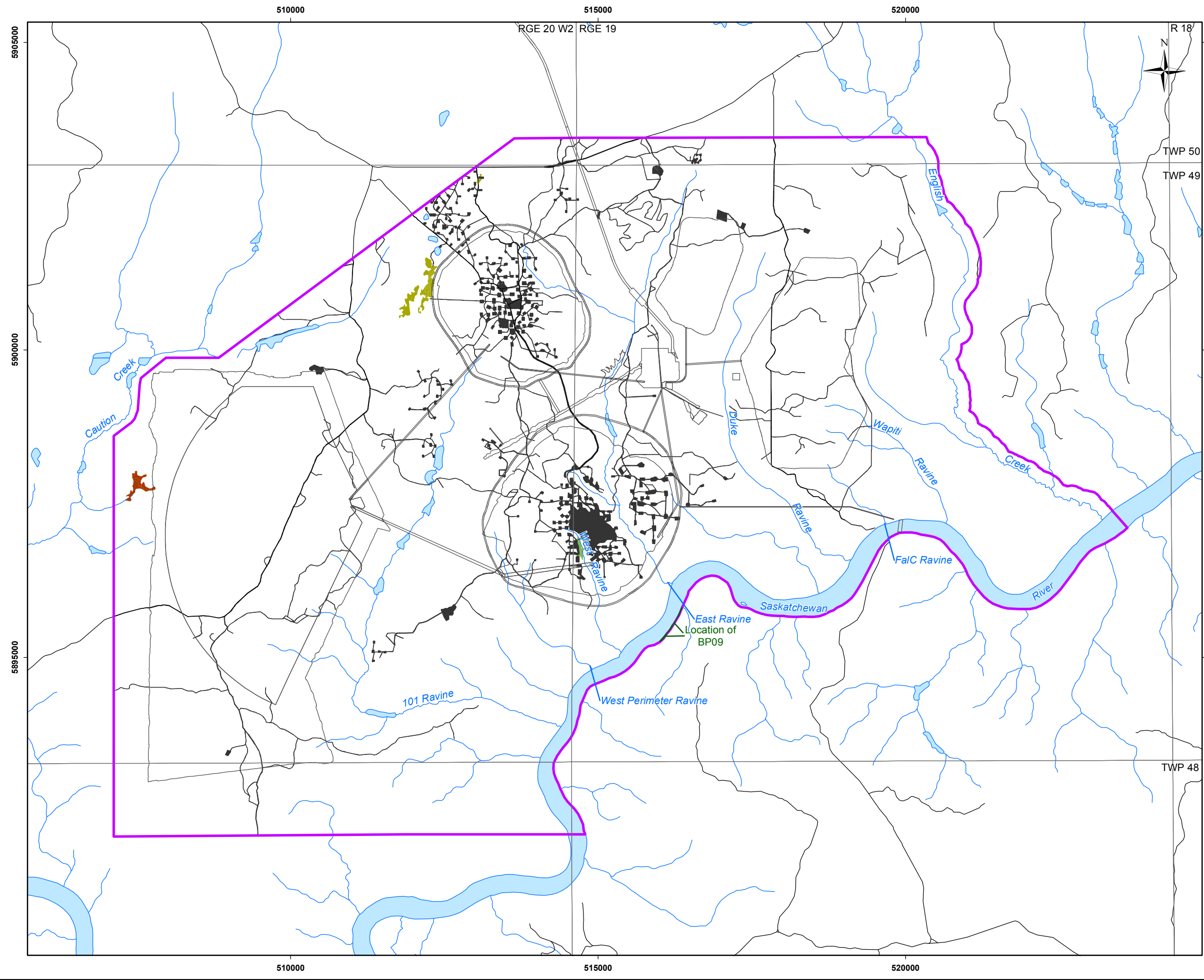
- Legend**
- Watercourse
 - Waterbody
 - Local Study Area
 - Baseline and Inventory Disturbances
 - Project Disturbance (Impact)
- Rare Plants**
- *Calamagrostis lapponica*
 - *Carex hystericina*
 - *Carex pseudocyperus*
 - *Chenopodium desiccatum*
 - *Chenopodium pratericola* ssp. *Dessicatum*
 - *Coeloglossum viride* var. *virescens*
 - *Cypripedium parviflorum* var. *makasin*
 - *Leucophysalis grandiflora*
 - *Lilium philadelphicum* var. *andinum*
 - *Listera cordata* var. *cordata*
 - *Lonicera oblongifolia*
 - *Polygala paucifolia*
 - *Polygala senega*
 - *Scirpus pallidus*
 - *Thalictrum occidentale* var. *occidentale*



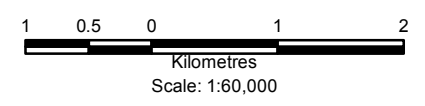
Reference
 Base data: NRCan National Road Network
 NTS 1:50,000 scale: GeoSask
 Mine facilities: AMEC dated July 2010
 Saskatchewan Ministry of Environment 2008.

CLIENT: 		
PROJECT: Star - Orion South Diamond Project		
Rare Plants in the LSA Project Case		
DATE: January 2012	ANALYST: NH	Figure 6.3.2-5
JOB No: SX0373306.10	QA/QC: MY	PDF FILE: Fig6.3.2-5 LSA Impact Rare Plants 12-01-16.pdf
GIS FILE: Fig6.3.2-5 LSA Impact Rare Plants.mxd		
PROJECTION: UTM Zone 13	DATUM: NAD27	

S:\GIS\Projects\SX\Shore_Gold\2011\ArcGIS\Report\Vegetation\Fig6.3.2-3_LSA_Impact_Old_Growth.mxd

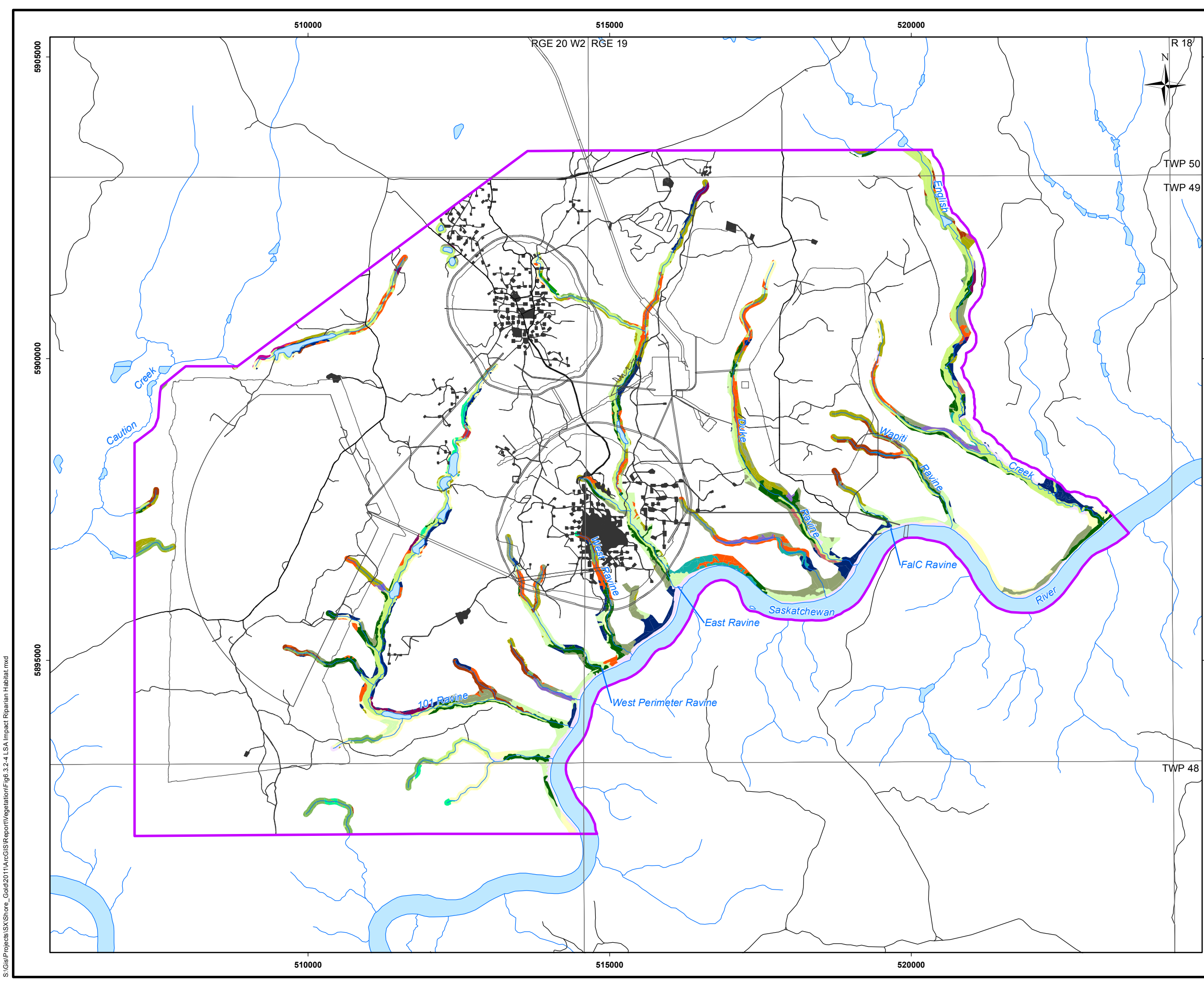


- Legend**
- Watercourse
 - Waterbody
 - Local Study Area
 - Baseline and Inventory Disturbances
 - Project Disturbance (Impact)
- Vegetation Class**
- BP03
 - BP09
 - BP14
 - BP18



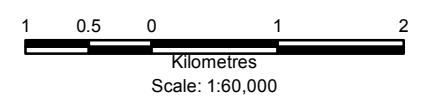
Reference
 Base data: NRCan National Road Network
 NTS 1:50,000 scale: GeoSask
 Mine facilities: AMEC dated July 2010
 Saskatchewan Ministry of Environment 2008.

		
PROJECT: Star - Orion South Diamond Project		
<h2 style="margin: 0;">Old Growth Forest in the LSA Project Case</h2>		
DATE: January 2012	ANALYST: NH	Figure 6.3.2-3
JOB No: SX0373306.10	QA/QC: MY	PDF FILE: Fig6.3.2-3 LSA Impact Old Growth 12-01-16.pdf
GIS FILE: Fig6.3.2-3 LSA Impact Old Growth.mxd		
PROJECTION: UTM Zone 13	DATUM: NAD27	



- Legend**
- Watercourse
 - Waterbody
 - Local Study Area
 - Baseline and Inventory Disturbances
 - Project Disturbance (Impact)

- Vegetation Class**
- BP01
 - BP01a
 - BP02
 - BP03
 - BP04
 - BP05
 - BP06
 - BP07
 - BP09
 - BP10
 - BP11
 - BP12
 - BP14
 - BP15
 - BP16
 - BP18
 - BP18a
 - BP19
 - BP23
 - BP25
 - BP28

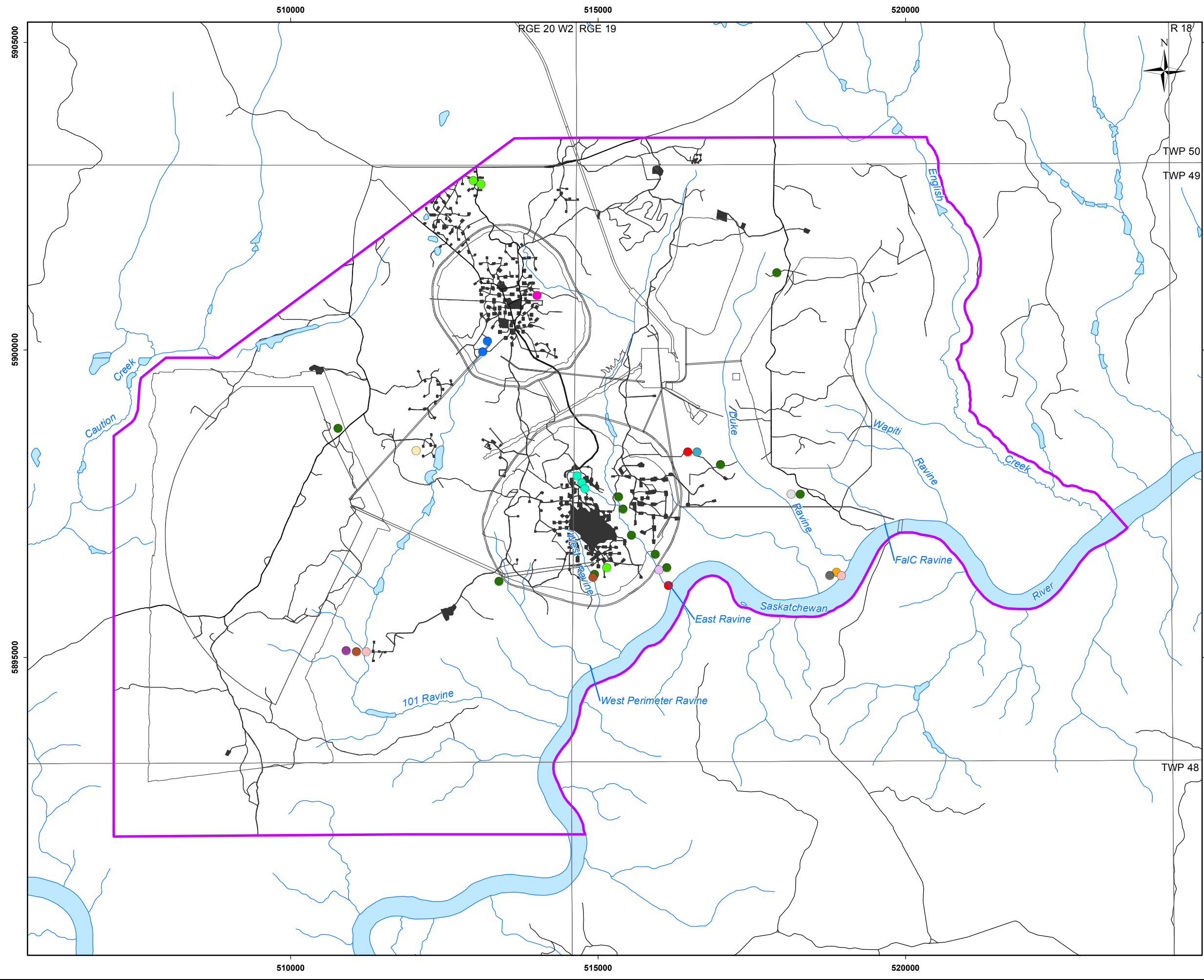


Reference
 Base data: NRCan National Road Network
 NTS 1:50,000 scale: GeoSask
 Mine facilities: AMEC dated July 2010
 Saskatchewan Ministry of Environment 2008.

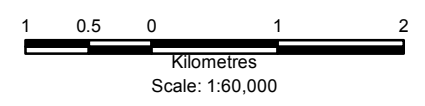
CLIENT: 		
PROJECT: Star - Orion South Diamond Project		
Riparian Habitat in the LSA Project Case		
DATE: January 2012	ANALYST: NH	Figure 6.3.2-4
JOB No: SX0373306.10	QA/QC: MY	PDF FILE: Fig6.3.2-4 LSA Impact Riparian Habitat 12-01-16.pdf
GIS FILE: Fig6.3.2-4 LSA Impact Riparian Habitat.mxd		
PROJECTION: UTM Zone 13	DATUM: NAD27	

S:\GIS\Projects\SX\Shore_Gold\2011\ArcGIS\Report\Vegetation\Fig.3.2-4 LSA Impact Riparian Habitat.mxd

S:\GIS\Projects\SI\Shore_Gold\2011\ArcGIS\Report\Vegetation\Fig6.3.2-5 LSA Impact Rare Plants.mxd



- Legend**
- Watercourse
 - Waterbody
 - Local Study Area
 - Baseline and Inventory Disturbances
 - Project Disturbance (Impact)
- Rare Plants**
- *Calamagrostis lapponica*
 - *Carex hystericina*
 - *Carex pseudocyperus*
 - *Chenopodium desiccatum*
 - *Chenopodium pratericola* ssp. *Dessicatum*
 - *Coeloglossum viride* var. *virescens*
 - *Cypripedium parviflorum* var. *makasin*
 - *Leucophysalis grandiflora*
 - *Lilium philadelphicum* var. *andinum*
 - *Listera cordata* var. *cordata*
 - *Lonicera oblongifolia*
 - *Polygala paucifolia*
 - *Polygala senega*
 - *Scirpus pallidus*
 - *Thalictrum occidentale* var. *occidentale*



Reference
 Base data: NRCan National Road Network
 NTS 1:50,000 scale: GeoSask
 Mine facilities: AMEC dated July 2010
 Saskatchewan Ministry of Environment 2008.

CLIENT: 		
PROJECT: Star - Orion South Diamond Project		
Rare Plants in the LSA Project Case		
DATE: January 2012	ANALYST: NH	Figure 6.3.2-5
JOB No: SX0373306.10	QA/QC: MY	PDF FILE: Fig6.3.2-5 LSA Impact Rare Plants 12-01-16.pdf
GIS FILE: Fig6.3.2-5 LSA Impact Rare Plants.mxd		
PROJECTION: UTM Zone 13	DATUM: NAD27	