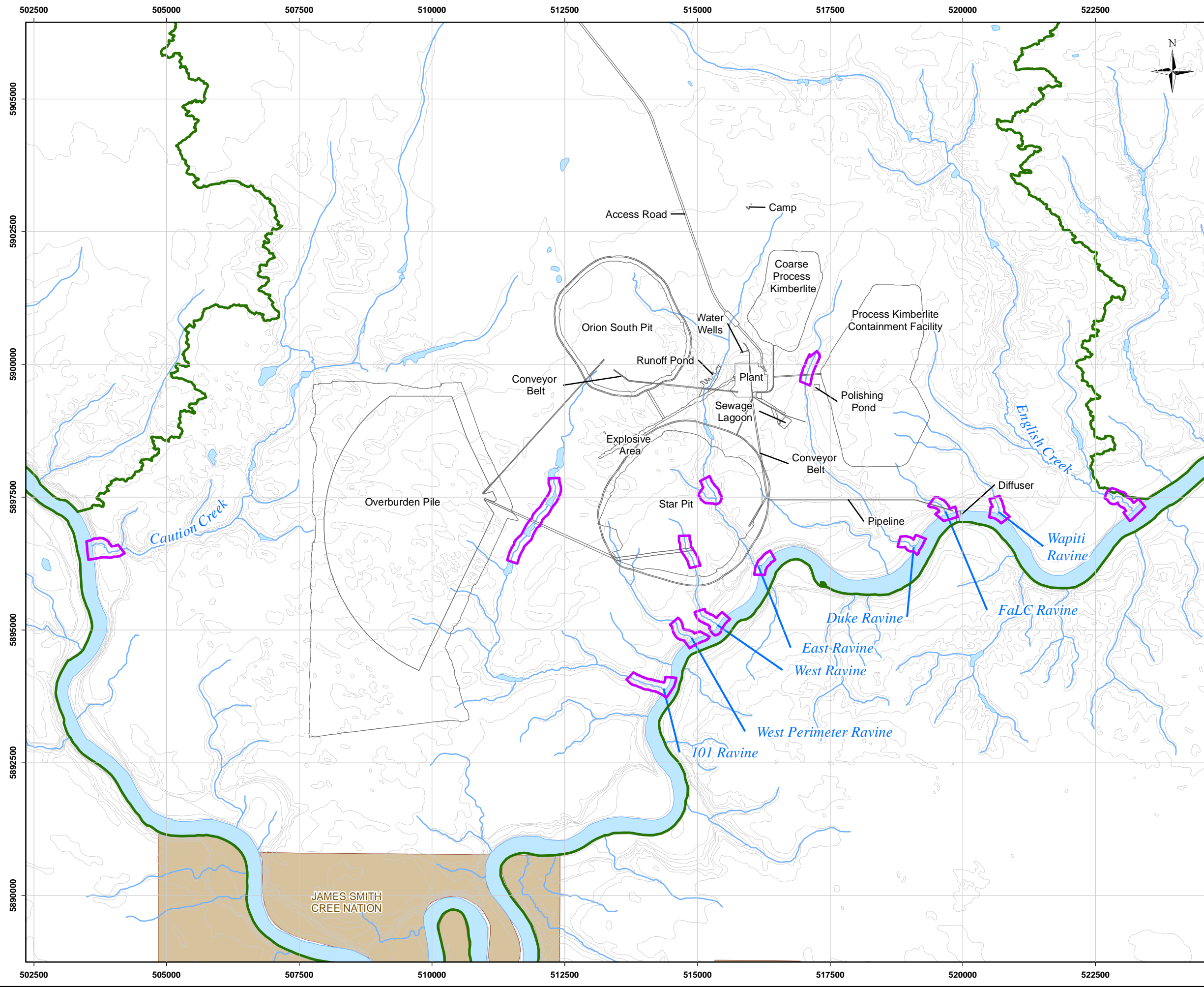


Y:\GIS\Projects\SX\SX03733_Shore-Gold_Diamond_1\Maping\10_fishes-aquatics\Baseline\10-100-002_v3.mxd



Legend

- Watercourse
- Contour(10m)
- Waterbody
- Local Study Area
- Fish Survey Areas
- First Nations Reserve

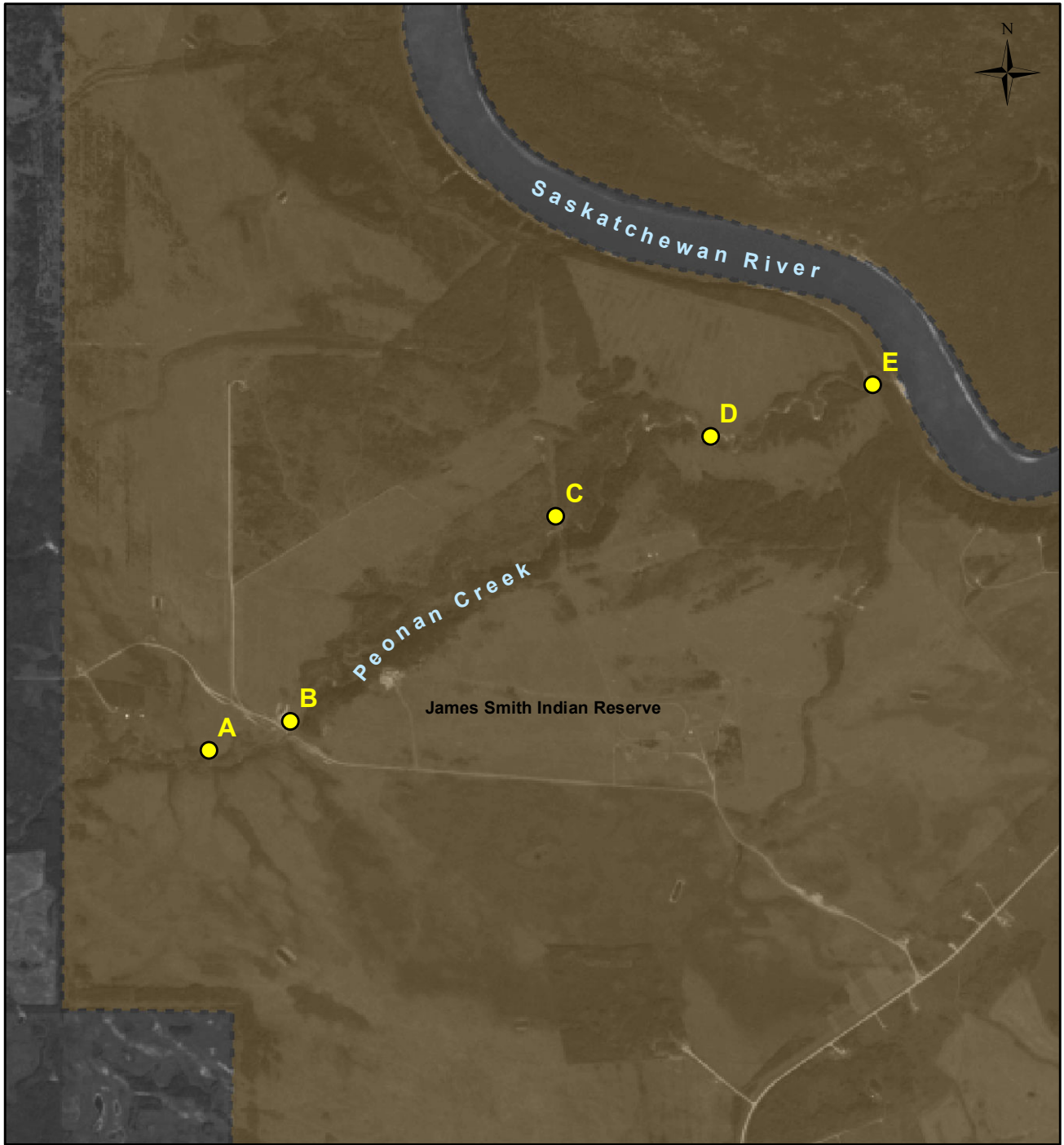
N

0 1 2 4
Kilometres
Scale: 1:70,000



Note:
Based on Pre-feasibility Study


Reference
Base data: NRCan National Road Network;
NTS 1:50,000 scale: GeoSask
Indian Reserve/ Municipality Boundaries: GeoSask
Mine facilities: Dated August 30, 2011

CLIENT: 	
PROJECT: Star - Orion South Diamond Project	
Aquatic Survey Study Areas in the LSA	
DATE: August, 2012	ANALYST: EO
JOB No: SX0373302	QA/QC: KW
Figure 6.3.1-1	
PDF FILE: 10-100-002_v3_aquatics.pdf	
GIS FILE: 10-100-002_v3.mxd	
PROJECTION: UTM Zone 13	DATUM: NAD27



Legend

-  Reconnaissance Area
-  Indian Reserve

CLIENT:			
PROJECT:		Star - Orion South Diamond Project	
Reconnaissance Areas in Peonan Creek			
			Figure 6.3.1-3
			DATE: August 02, 2012
GIS TRACKING NUMBER: 20120802_ReceAreas.mxd		PROJECT No: SX03733	
PROJECTION & DATUM: UTM Zone 13 NAD27		DRAWN BY:	
			