



STAR-ORION SOUTH DIAMOND PROJECT
ENVIRONMENTAL IMPACT STATEMENT

APPENDIX 6.5-C

Tornados

Information from the Map

Major tornadoes in Canada

Category	Tornado
Damages (million\$)	4
DATE	1912 06 30
DEATHS	28
Evacuated	
Injured	
STORY	Regina-1912

Major tornadoes in Canada

Category	Tornado
Damages (million\$)	
DATE	1950 11
DEATHS	
Evacuated	
Injured	
STORY	Regina-1950

Capitals (Canada)

Latitude	502700
Longitude	1043700
Name	Regina
National Topographic Map (1:50 000 scale)	072107
1991 Population	179183
Statistics Canada's Community Profiles	Regina Statistics



The Atlas of Canada

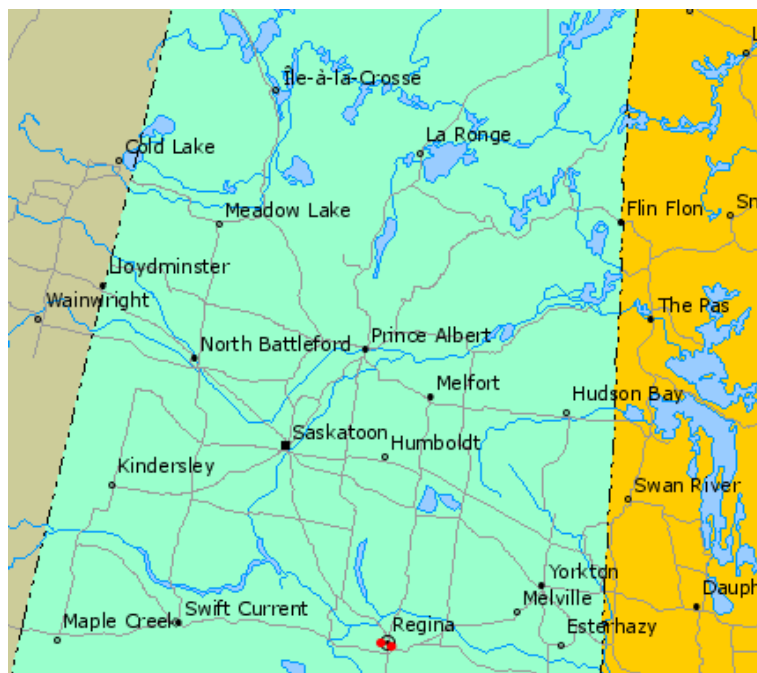


[Print Map](#)

[Return to Map](#)



Major Tornadoes



0 76 152 228 304 km

Abstract:

Tornadoes are columns of air that spin at a high rate of speed. They are small in scale but can be very violent. The area affected by a tornado's passage is between about 40 and 400 metres in width and between 1.7 and 36 kilometres in length. During a tornado the damage is due to wind as well as an extremely sudden drop in pressure. Tornadoes vary in intensity, measured on the Fujita or F scale, graduated from 0 to 5 based on the level of damage. The main season for tornadoes is from April to October, and every province is subject to the risk of tornadoes.



© Her Majesty the Queen in Right of Canada, 2010.

Major tornadoes in Canada

● Tornado

Populated Places

- 1 - 4999
- 5 000 - 49 999
- 50 000 - 99 999
- 100 000 and greater
- ⊙ Provincial and Territorial Capital
- ★ National Capital

Road network

- Road network
- Ferry route

Provinces and Territories

- Newfoundland
- Prince Edward Island
- Nova Scotia
- New Brunswick
- Quebec
- Ontario
- Manitoba
- Saskatchewan
- Alberta
- British Columbia
- Yukon Territory
- Northwest Territories
- Nunavut

Boundaries

- International
- Provincial / Territorial
- Canada / Kalaallit Nunaat dividing line
- EEZ (200 mile)

Other Features

- Water area
- Regions outside Canada