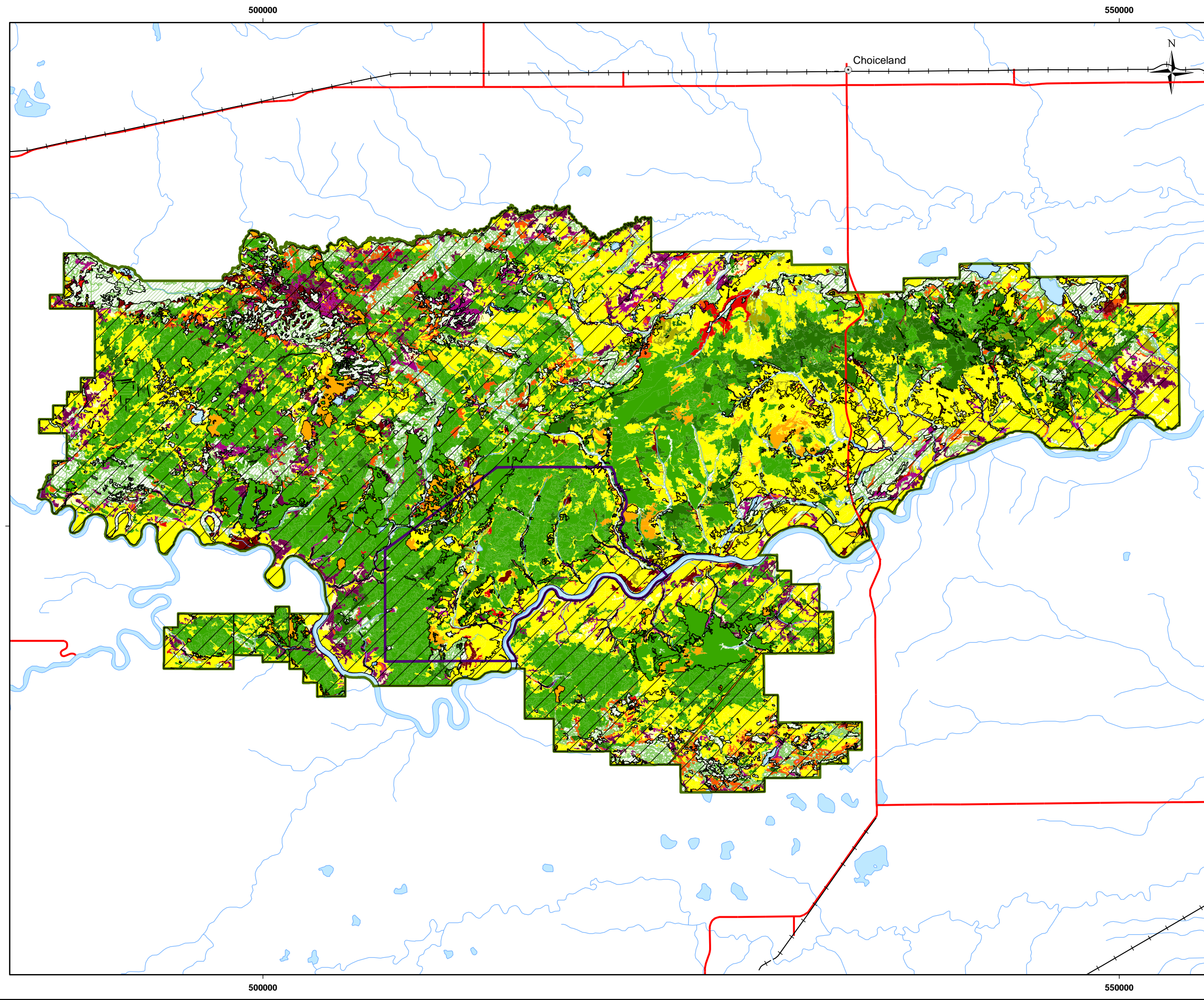
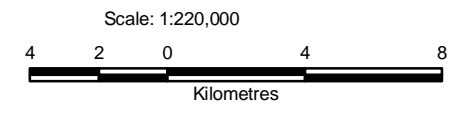


Y:\GIS\Projects\SX03733\_Shore-Gold\_Diamond\_1\Mapping\06\_vegetation\Baseline\06-100-011.mxd





### Legend

- Watercourse
- Highway
- +— Railway
- Project LSA
- Fort à la Corne Provincial Forest
- Vegetation Type**
- Balsam Poplar - Spruce : Moist
- Balsam Poplar - Trembling Aspen : Moist
- Black Spruce : Moist
- Jack Pine - Trembling Aspen : Dry to Fresh
- Jack Pine : Dry to Fresh
- Trembling Aspen - Spruce : Fresh
- Trembling Aspen : Dry to Fresh
- Trembling Aspen : Moist
- White Spruce : Fresh
- White Spruce : Moist
- Marsh-Bog-Fen
- Brushland-Grassland
- Waterbody
- Year of Origin**
- >1980
- <1980

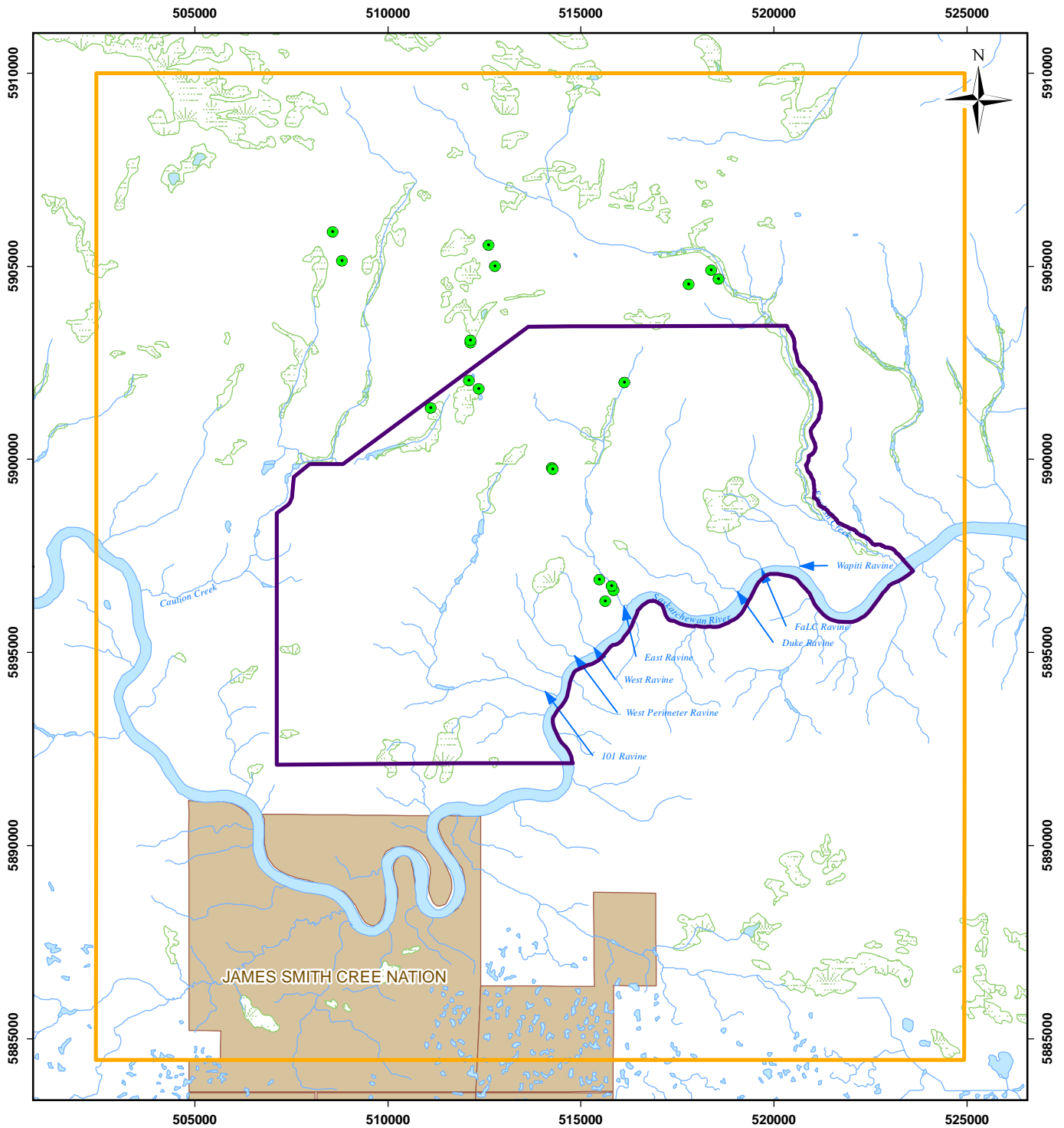


### Reference

Base data:  
 Mine facilities: Amec, dated 19 February 2009

		
<b>PROJECT:</b> Star - Orion South Diamond Project		
<b>Vegetation Types in the          Fort à la Corne Forest</b>		
<b>DATE:</b> November 10, 2010	<b>ANALYST:</b> EO	<b>Figure 5.3.3-1</b>
<b>JOB No:</b> SX0373301	<b>QA/QC:</b> AA	<b>PDF FILE:</b> 06-100-011_veg_wildlife.pdf
<b>GIS FILE:</b> 06-100-011.mxd		
<b>PROJECTION:</b> UTM Zone 13	<b>DATUM:</b> NAD27	






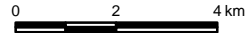

\\By-fs1\by-ee-gis\Projects\SX\SX03733\_Shore-Gold\_Diamond\_1\Mapping\11\_wildlife\Baseline\17-100-005.mxd

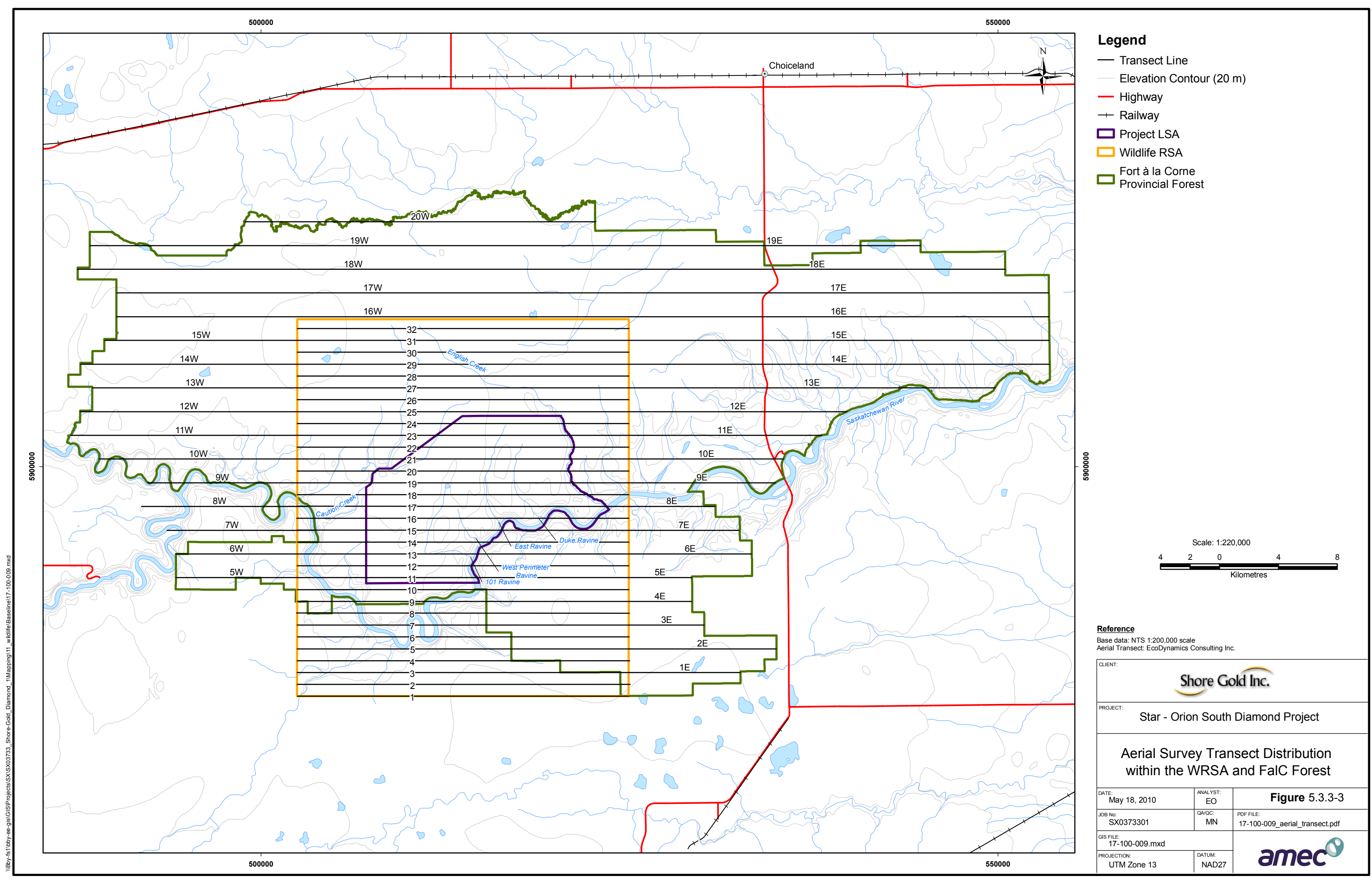
**Legend**

- Watercourse
- Waterbody
- Wetland
- Indian Reserve
- Project LSA
- Wildlife RSA
- Small Mammal Trapline Location

**Reference**

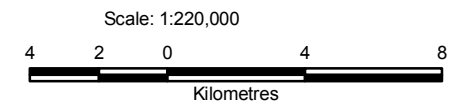
Base data: NTS 1:50,000 scale  
 Small Mammal Trapline Survey: EcoDynamics Consulting Inc.

	
PROJECT: Star - Orion South Diamond Project	
<h3>Small Mammal Trapping Transect Locations Fall 2007</h3>	
	<b>Figure 5.3.3-2</b> DATE: May 18, 2010
GIS TRACKING NUMBER: 17-100-005	PROJECT No: SX03733
PROJECTION & DATUM: UTM Zone 13 NAD27	DRAWN BY: EO
	



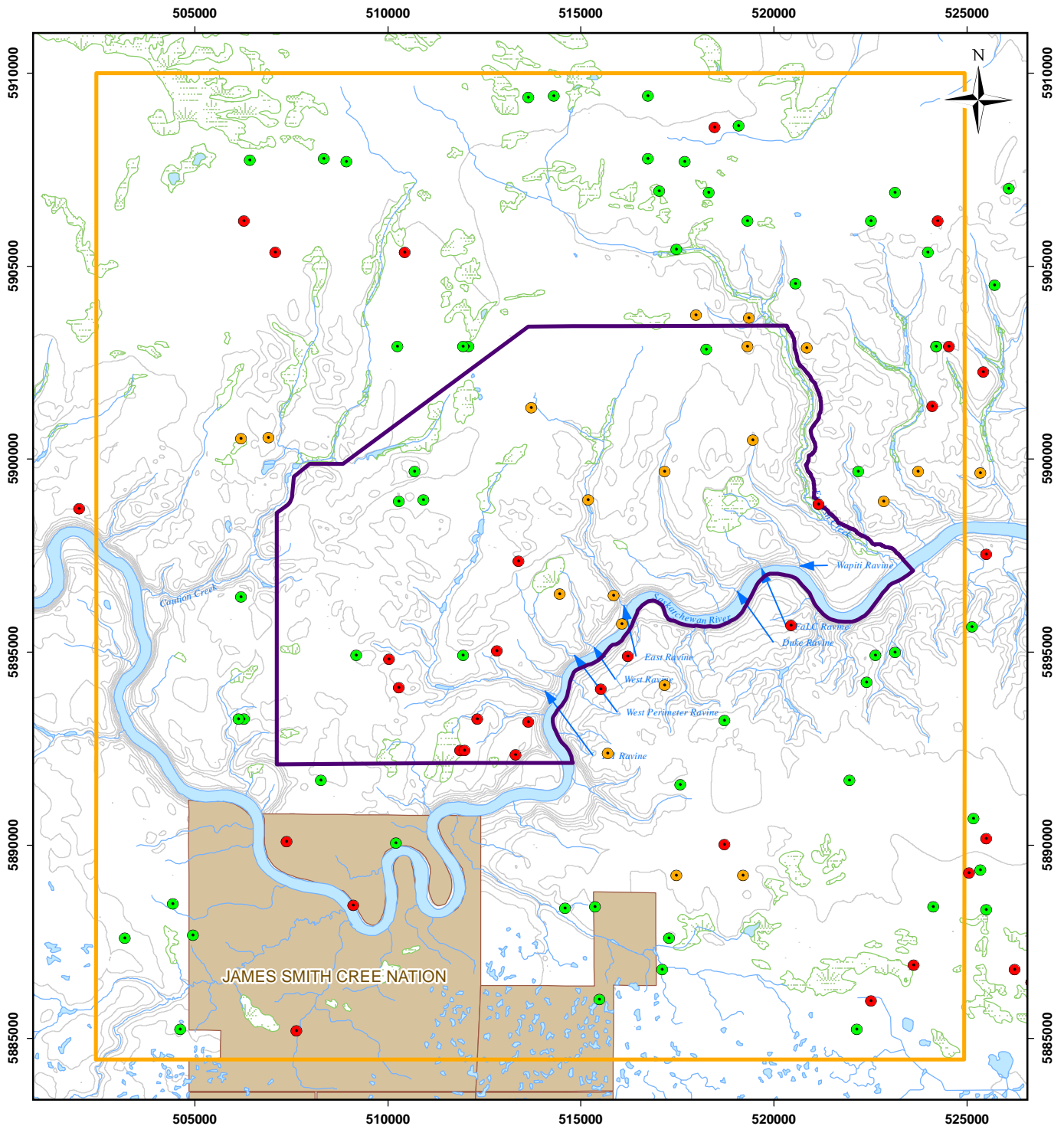
I:\By-fs1\by-ee-gis\GIS\Projects\SX\SX03733\_Shore\_Gold\_Diamond\_1\Mapping\11\_wildlife\Baseline\17-100-009.mxd

- Legend**
- Transect Line
  - Elevation Contour (20 m)
  - Highway
  - + Railway
  - ▭ Project LSA
  - ▭ Wildlife RSA
  - ▭ Fort à la Corne Provincial Forest



**Reference**  
 Base data: NTS 1:200,000 scale  
 Aerial Transect: EcoDynamics Consulting Inc.

CLIENT: 		
PROJECT: Star - Orion South Diamond Project		
<b>Aerial Survey Transect Distribution within the WRSA and FaC Forest</b>		
DATE: May 18, 2010	ANALYST: EO	<b>Figure 5.3.3-3</b>
JOB No: SX0373301	QA/QC: MN	PDF FILE: 17-100-009_aerial_transect.pdf
GIS FILE: 17-100-009.mxd		
PROJECTION: UTM Zone 13	DATUM: NAD27	



**Legend**

- Elevation Contour (10 m)
- Watercourse
- Waterbody
- Wetland
- Indian Reserve
- Project LSA
- Wildlife RSA
- Deer Sighting
- Elk Sighting
- Moose Sighting

**Reference**

Base data: NTS 1:50,000 scale  
 Ungulate Sighting: EcoDynamics Consulting Inc.

CLIENT:



PROJECT:

Star - Orion South Diamond Project

Ungulate Sightings December  
 2007 Aerial Survey

0 2 4 km

**Figure 5.3.3-4**

DATE:  
 May 20, 2010

GIS TRACKING NUMBER:  
 17-100-010

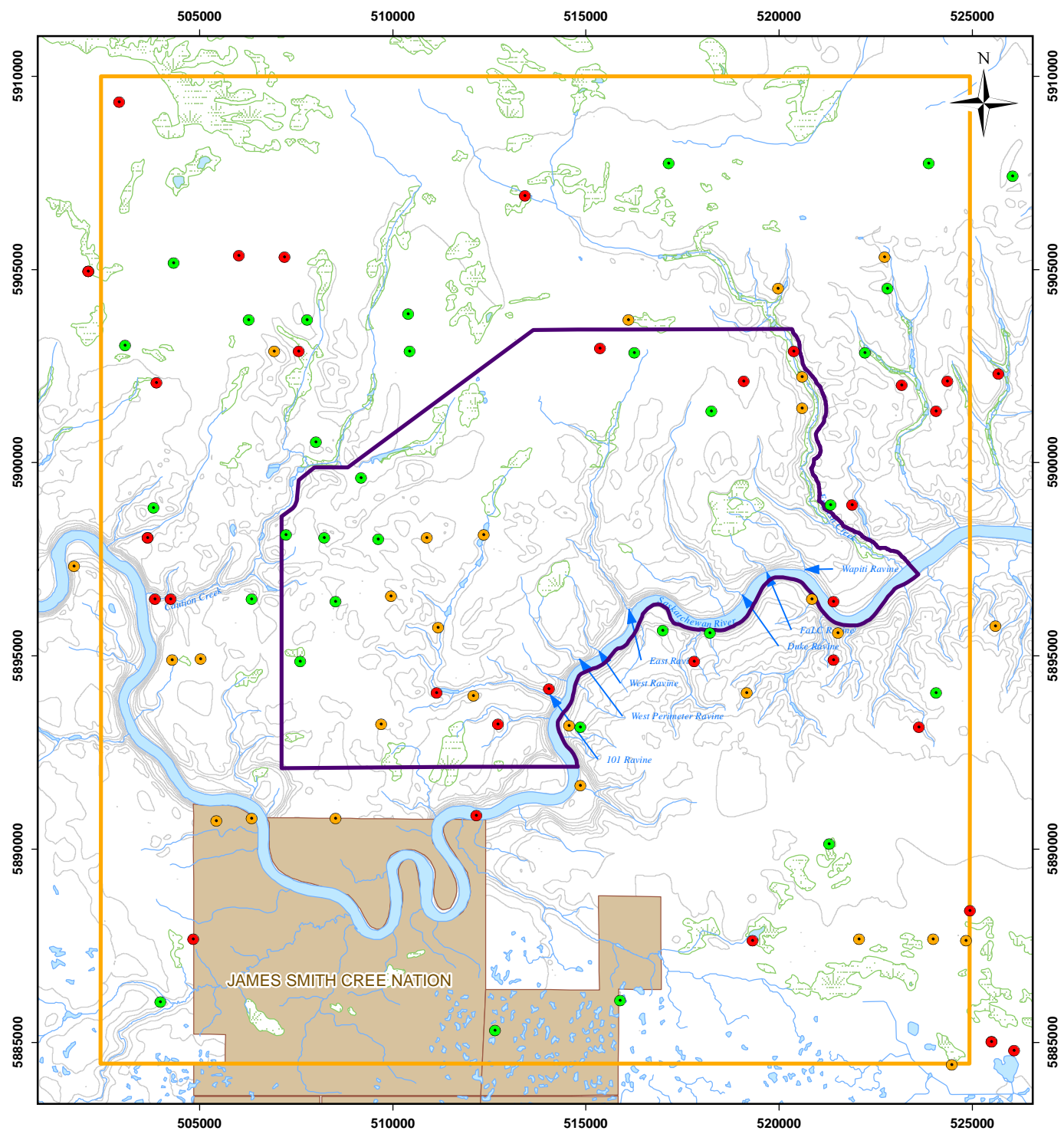
PROJECT No:  
 SX03733

PROJECTION & DATUM:  
 UTM Zone 13 NAD27

DRAWN BY:  
 EO







\\By-fs1\by-ee-gis\Projects\SX\SX03733\_Shore-Gold\_Diamond\_17-100-011.mxd

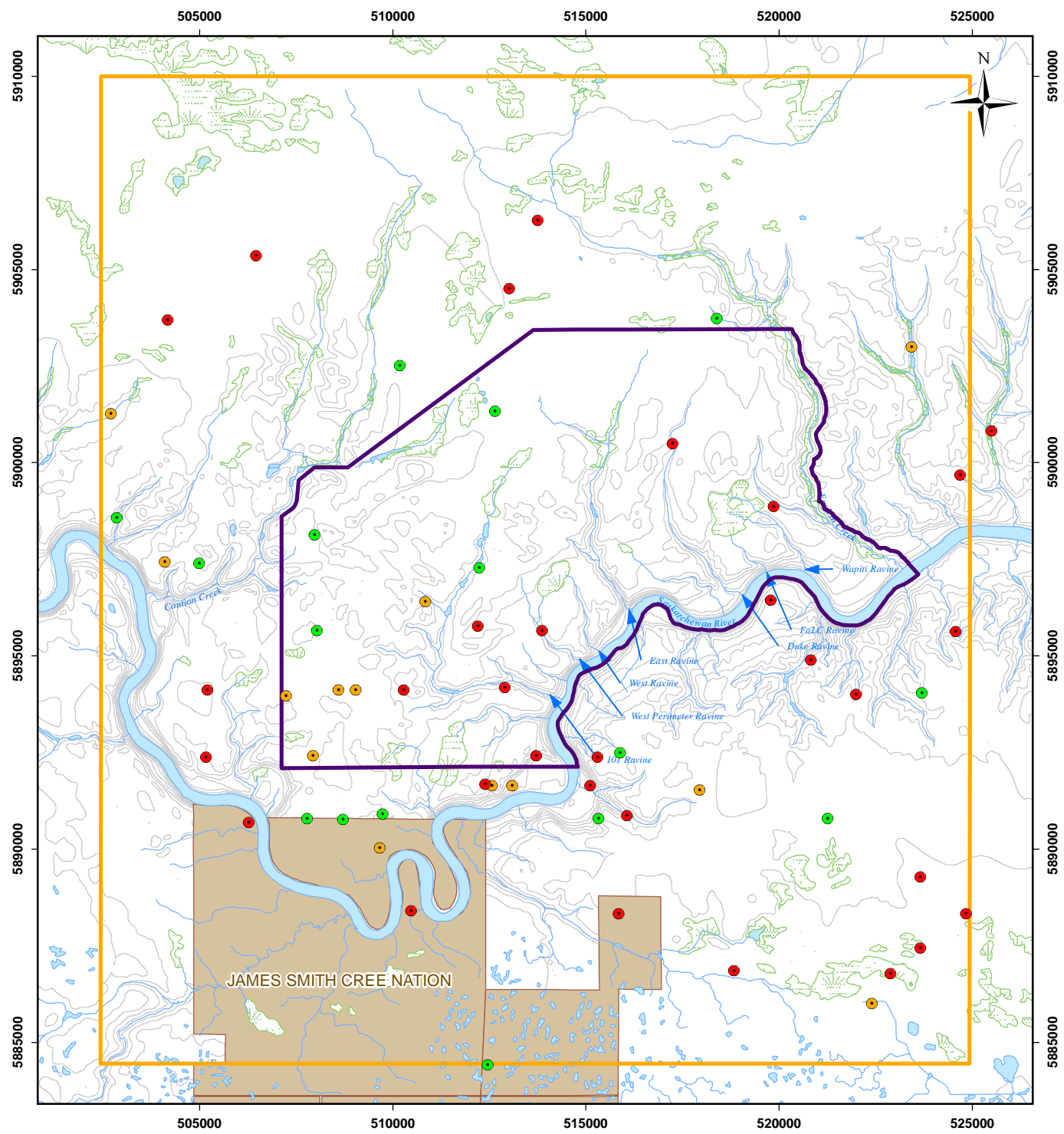
**Legend**

- Elevation Contour (10 m)
- Watercourse
- Waterbody
- Wetland
- Indian Reserve
- Project LSA
- Wildlife RSA
- Deer Sighting
- Elk Sighting
- Moose Sighting

**Reference**

Base data: NTS 1:50,000 scale  
 Ungulate Sighting: EcoDynamics Consulting Inc.

CLIENT: 	
PROJECT: Star - Orion South Diamond Project	
Ungulate Sightings January 2008 Aerial Survey	
0      2      4 km 	<b>Figure 5.3.3-5</b> DATE: May 20, 2010
GIS TRACKING NUMBER: 17-100-011	PROJECT No: SX03733
PROJECTION & DATUM: UTM Zone 13 NAD27	DRAWN BY: EO



**Legend**

- Elevation Contour (10 m)
- Watercourse
- Waterbody
- Wetland
- Indian Reserve
- Project LSA
- Wildlife RSA
- Deer Sighting
- Elk Sighting
- Moose Sighting

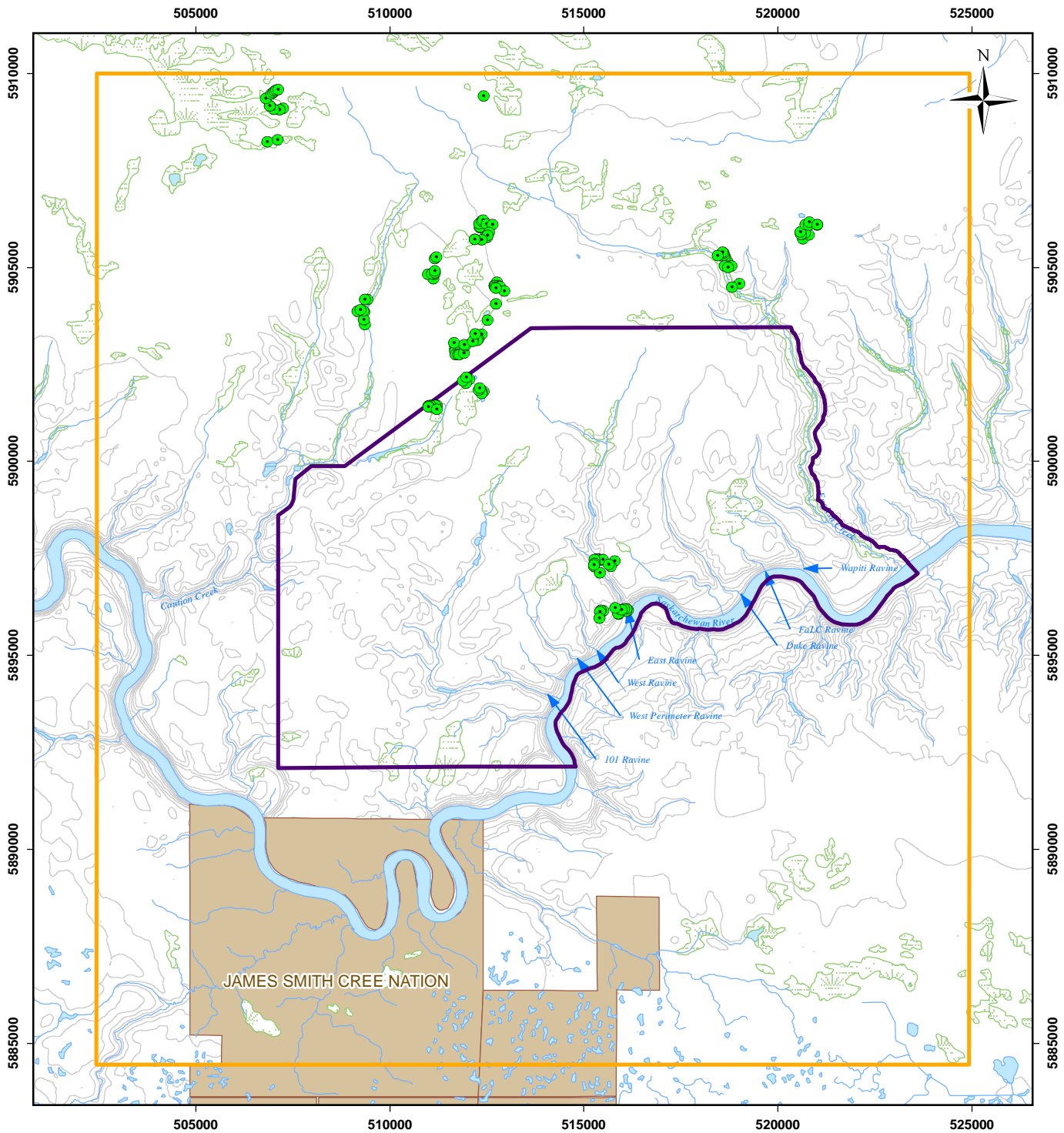
**Reference**

Base data: NTS 1:50,000 scale  
 Ungulate Sighting: EcoDynamics Consulting Inc.

CLIENT: 	
PROJECT: Star - Orion South Diamond Project	
Ungulate Sightings March 2008 Aerial Survey	
0      2      4 km 	<b>Figure 5.3.3-6</b> DATE: May 20, 2010
GIS TRACKING NUMBER: 17-100-012	PROJECT No: SX03733
PROJECTION & DATUM: UTM Zone 13 NAD27	DRAWN BY: EO

\\By-fs1\by-ee-gis\Projects\SX03733\_Shore-Gold\_Diamond\_17-100-012.mxd





**Legend**

- Elevation Contour (10 m)    ● Track Count Location
- Watercourse
- Waterbody
- Wetland
- Indian Reserve
- Project LSA
- Wildlife RSA

**Reference**

Base data: NTS 1:50,000 scale  
 Winter Track Survey: EcoDynamics Consulting Inc.

CLIENT:



PROJECT:

Star - Orion South Diamond Project

**Track Count Locations  
 Winter 2007-2008**

0                      2                      4 km

**Figure 5.3.3-7**

DATE:

May 18, 2010

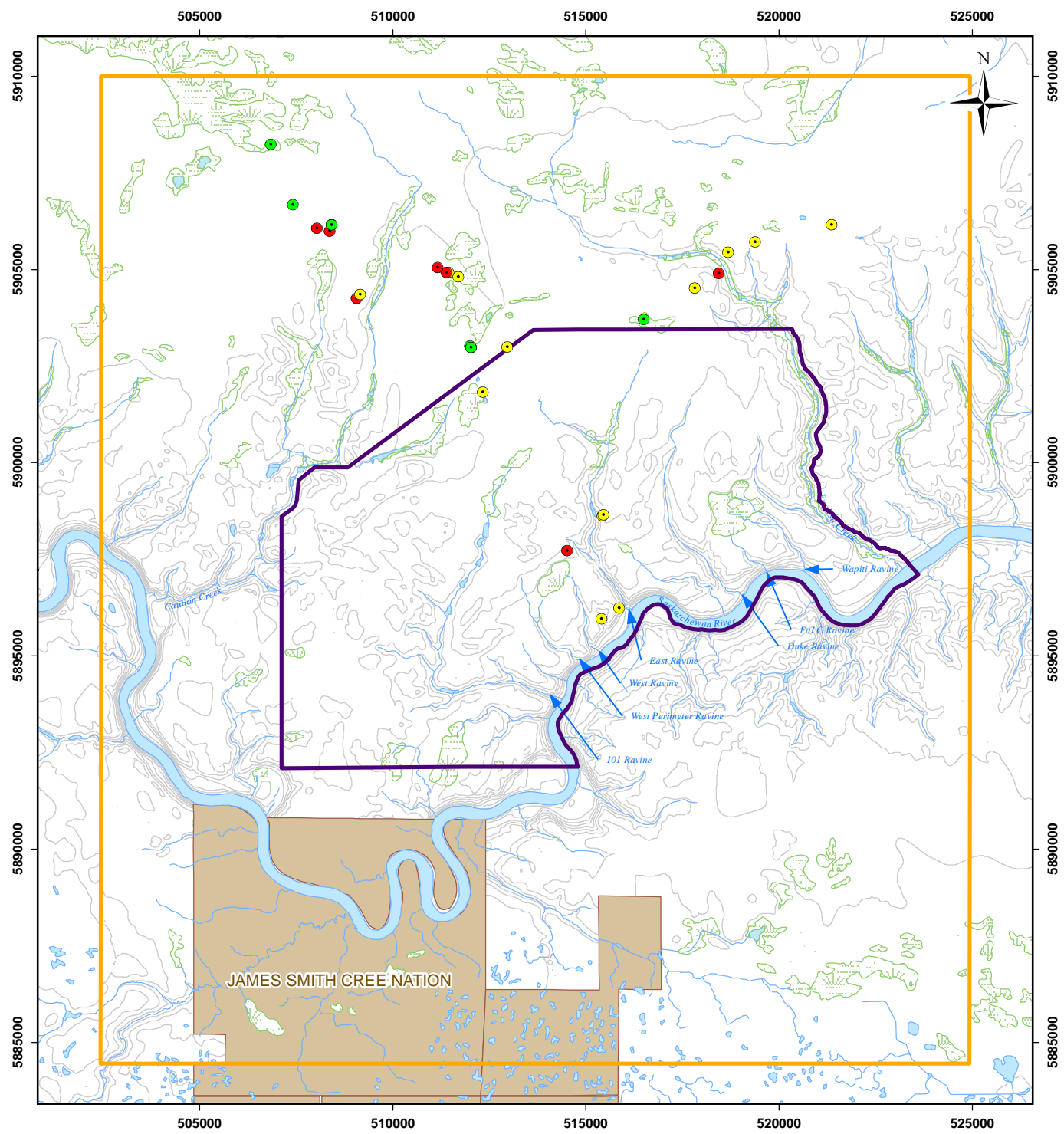
GIS TRACKING NUMBER:  
 17-100-007

PROJECT No:  
 SX03733

PROJECTION & DATUM:  
 UTM Zone 13 NAD27

DRAWN BY:  
 EO





**Legend**

- Elevation Contour (10 m)
- Watercourse
- Waterbody
- Wetland
- Indian Reserve
- Project LSA
- Wildlife RSA
- Food Habit Survey Winter 2007-2008
- Deer
- Elk
- Moose

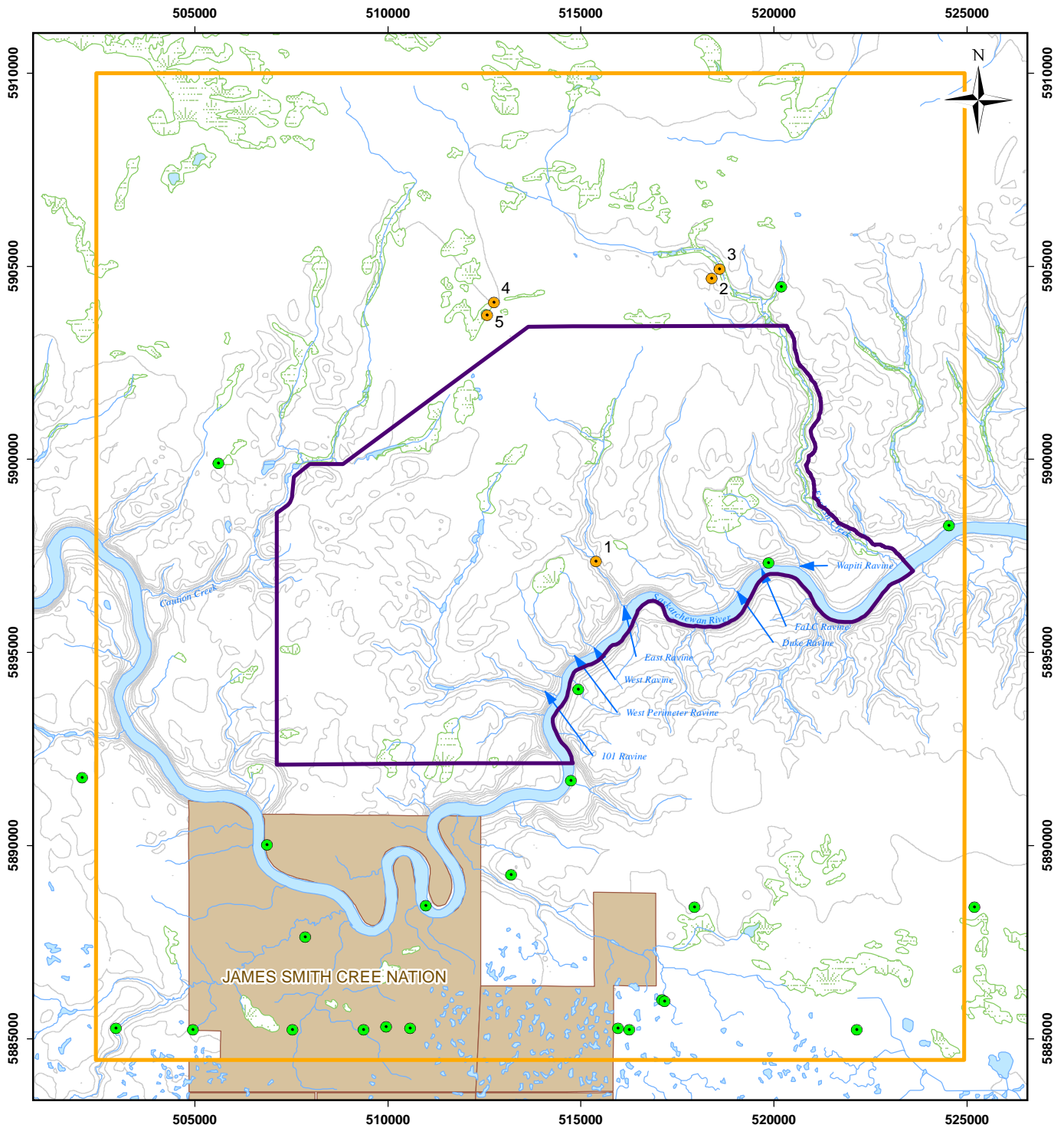
**Reference**

Base data: NTS 1:50,000 scale  
 Food Habit Survey: EcoDynamics Consulting Inc.

CLIENT:			
PROJECT:		Star - Orion South Diamond Project	
<b>Food Habit Survey Locations Winter 2007-2008</b>			
0      2      4 km 		<b>Figure 5.3.3-8</b>	
		DATE: May 18, 2010	
GIS TRACKING NUMBER: 17-100-004	PROJECT No: SX03733		
PROJECTION & DATUM: UTM Zone 13 NAD27	DRAWN BY: EO		

\\By-fs1\by-ee-gis\Projects\SX\SX03733\_Shore-Gold\_Diamond\_1\Mapping\11\_wildlife\Baseline\17-100-004.mxd





\\By-fs1\by-ee-gis\Projects\SX\SX03733\_Shore-Gold\_Diamond\_17-100-008.mxd

**Legend**

- Elevation Contour (10 m)
- Watercourse
- Waterbody
- Wetland
- Indian Reserve
- Project LSA
- Wildlife RSA
- Sticknest Observation
- Owl Recon Location

**Reference**

Base data: NTS 1:50,000 scale  
Nest Survey: EcoDynamics Consulting Inc.

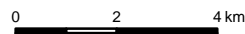
CLIENT:



PROJECT:

Star - Orion South Diamond Project

**Owl Survey Points and Stick Nest Observations**



**Figure 5.3.3-9**

DATE:  
May 18, 2010

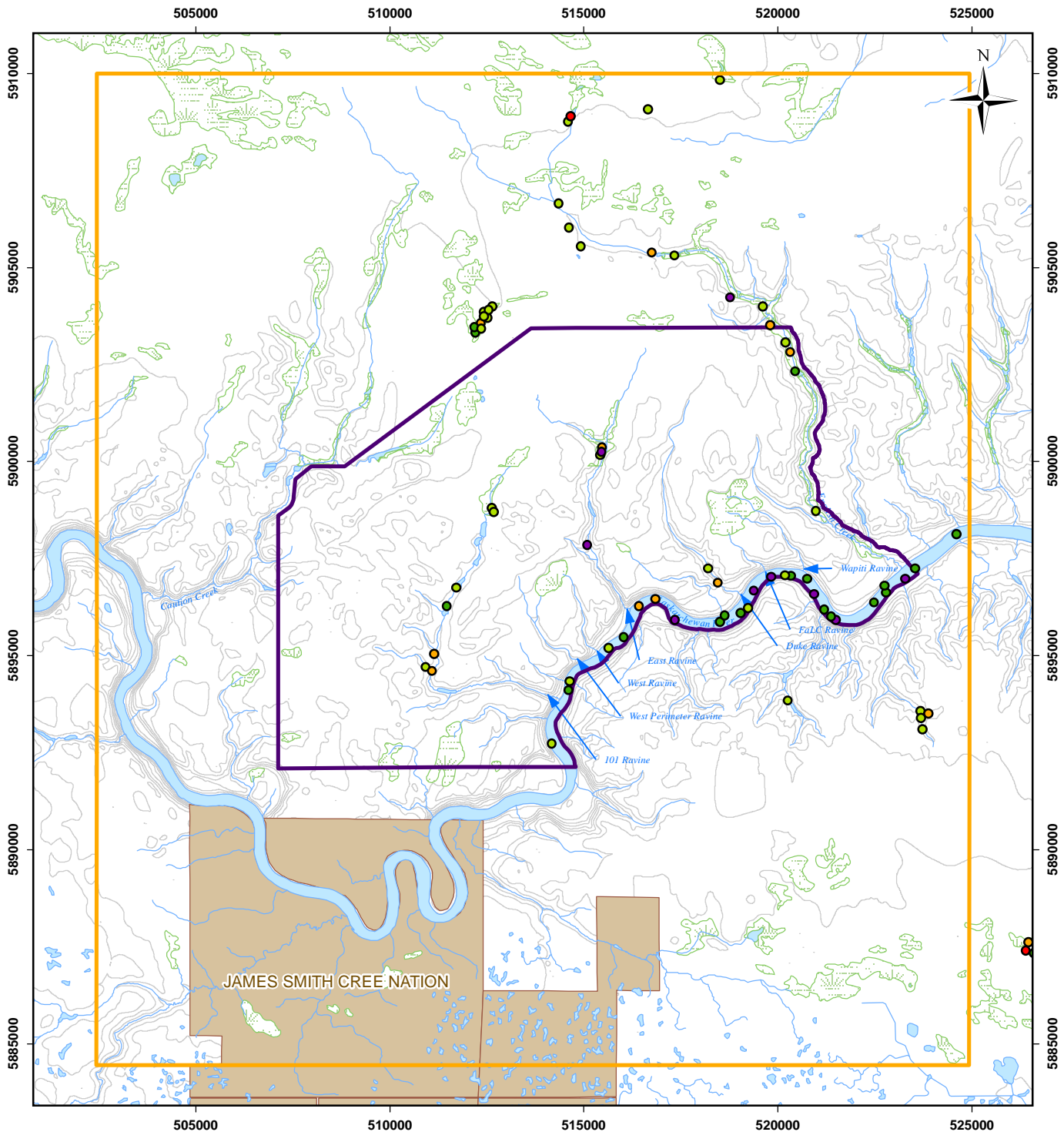
GIS TRACKING NUMBER:  
17-100-008

PROJECT No:  
SX03733

PROJECTION & DATUM:  
UTM Zone 13 NAD27

DRAWN BY:  
EO





\\By-fs1\by-ee-gis\Projects\SX\SX03733\_Shore-Gold\_Diamond\_1\Mapping\11\_wildlife\Baseline\17-100-006.mxd

**Legend**

- Elevation Contour (10 m)
- Watercourse
- Waterbody
- Wetland
- Indian Reserve
- Project LSA
- Wildlife RSA
- Waterfowl Survey - Group
- Diver
- Dabbler
- Canadian Goose
- Unidentified Ducks
- Other

**Reference**

Base data: NTS 1:50,000 scale  
 Water Bird Survey: EcoDynamics Consulting Inc.

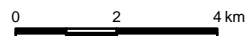
CLIENT:



PROJECT:

Star - Orion South Diamond Project

**Water Bird Survey**



**Figure 5.3.3-10**

DATE:  
May 18, 2010

GIS TRACKING NUMBER:  
17-100-006

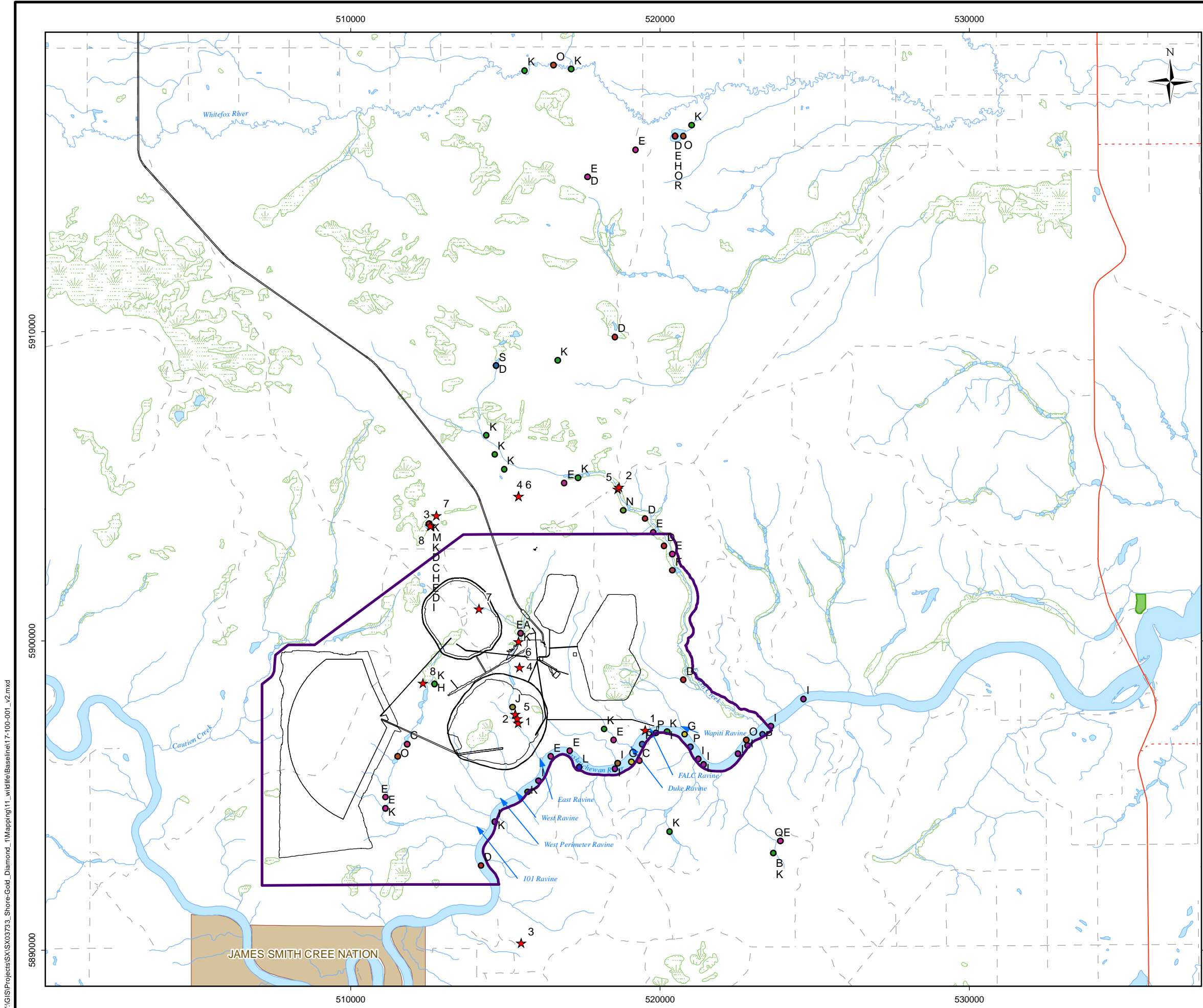
PROJECT No:  
SX03733

PROJECTION & DATUM:  
UTM Zone 13 NAD27

DRAWN BY:  
EO







**Legend**

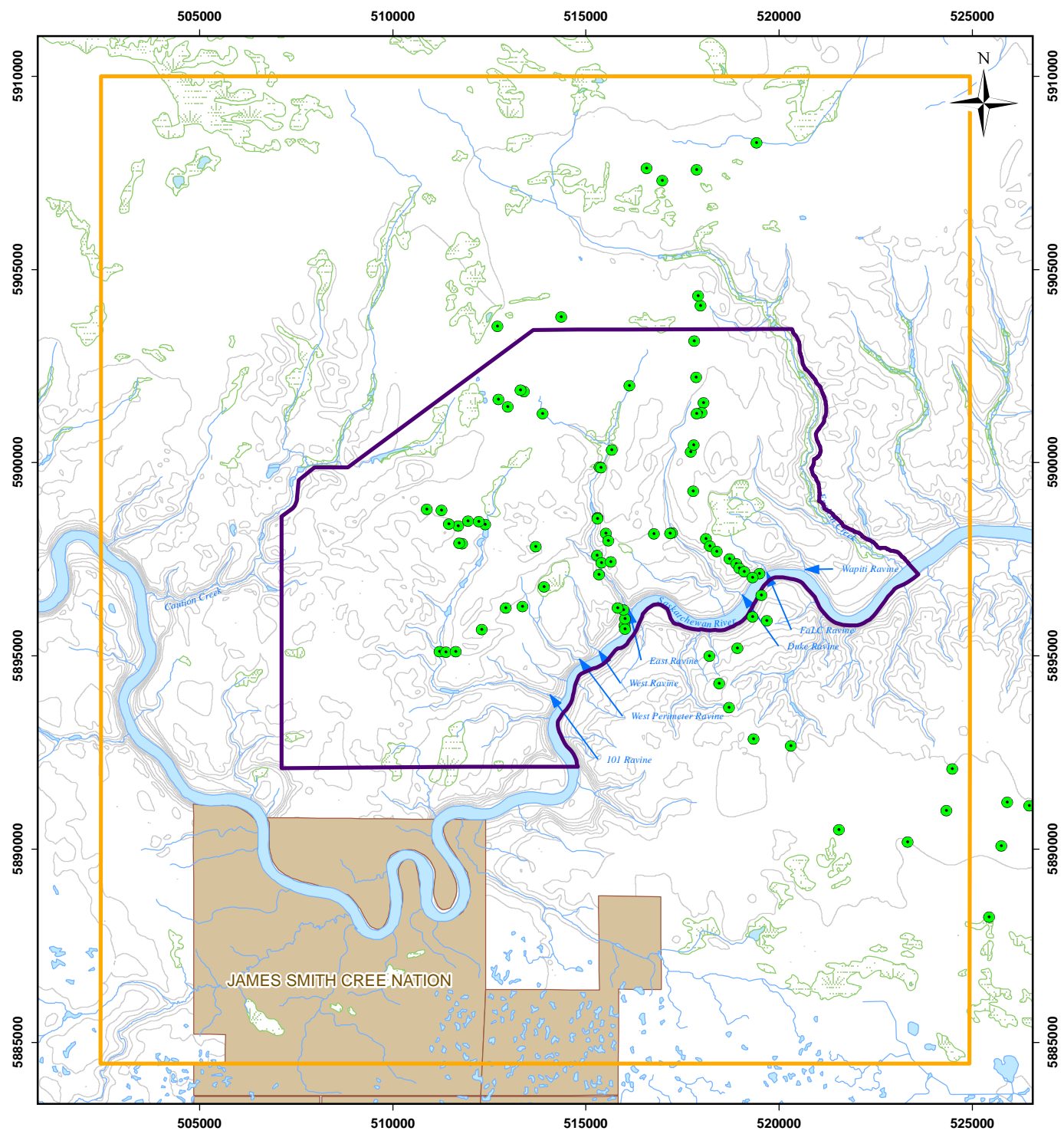
- ★ Incidental Wildlife Observation
- Waterfowl Survey (2008)
- A, american bittern
- B, american wigeon
- C, blue-winged teal
- D, bufflehead
- E, Canada goose
- F, canvas back
- G, common merganser
- H, coots
- I, corrorants
- J, great blue heron
- K, green-winged teal
- L, pelican
- M, red-necked grebe
- N, sand hill crane
- O, scaup
- P, shorebirds
- Q, shoveler
- R, unident diver
- S, unident ducks
- T, western grebe
- Mine Facilities
- Paved Highway
- - - Unpaved Highway
- - - Secondary Road
- - - Elevation Contour (10 m)
- Watercourse
- Waterbody
- Wetland
- Park or Protected Area
- Indian Reserve
- Project LSA

**Note:**  
Based on Pre-feasibility Study

**Reference**  
Base data:  
NTS 1:50,000 scale

CLIENT: 	
PROJECT: Star Diamond Project	
<b>Waterfowl Survey (2008)</b>	
Scale: 1:125,000 	<b>Figure 5.3.3-11</b>
DATE: August, 2012	
GIS TRACKING NUMBER: 17-100-001_v2.mxd	PROJECT No: SX03733
PROJECTION & DATUM: UTM Zone 13 NAD27	DRAWN BY: EO

Y:\GIS\Projects\SX03733\_Shore-Gold\_Diamond\_1\Mapping\11\_wildlife\Baseline17-100-001\_v2.mxd






**Legend**

- Point Count Location
- Elevation Contour (10 m)
- Watercourse
- Waterbody
- Wetland
- Indian Reserve
- Project LSA
- Wildlife RSA

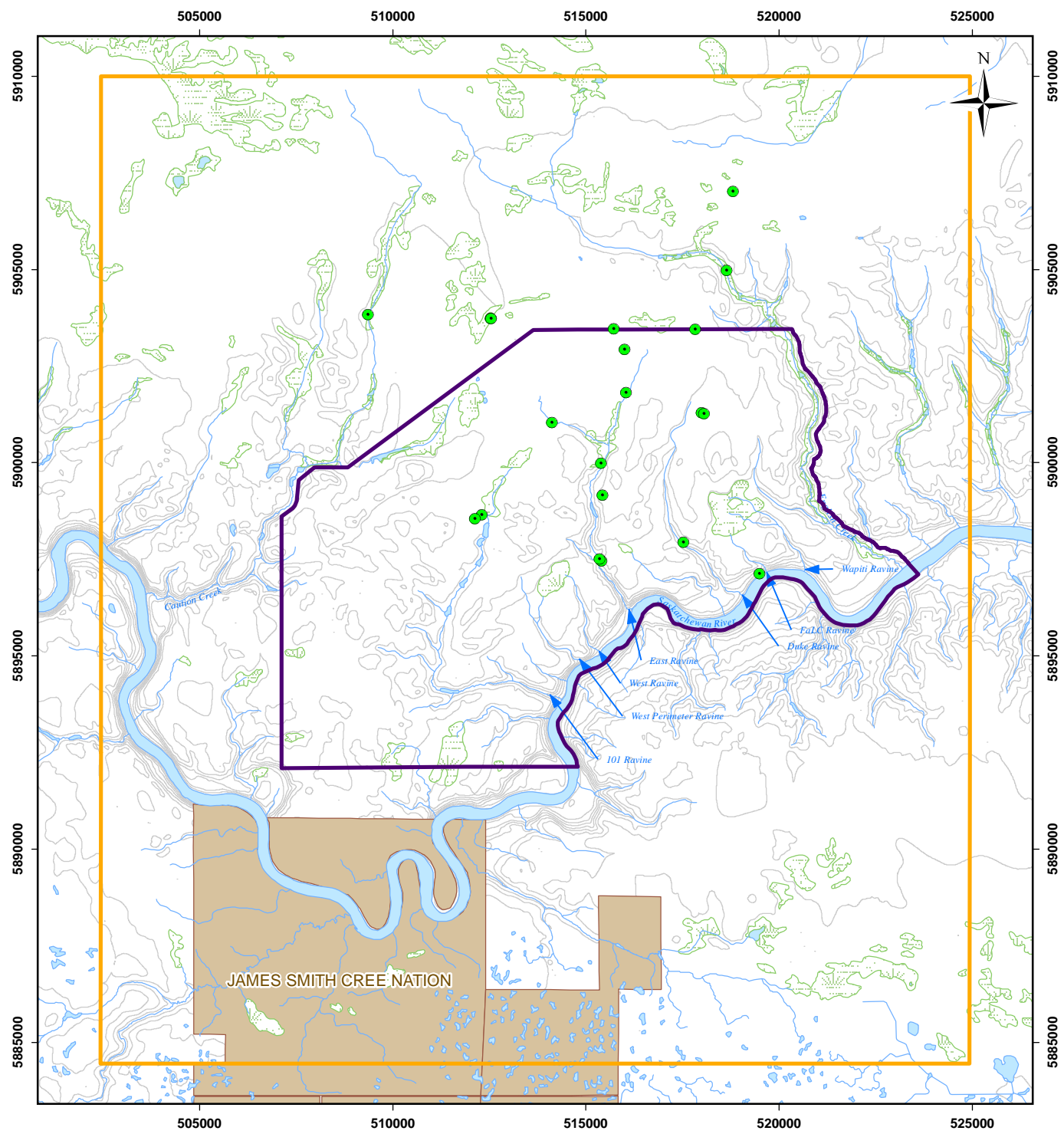
**Reference**

Base data: NTS 1:50,000 scale  
 Count Locations: EcoDynamics Consulting Inc.

CLIENT: 	
PROJECT: Star - Orion South Diamond Project	
<b>Breeding Bird Point Count Locations</b>	
0      2      4 km 	<b>Figure 5.3.3-12</b> DATE: May 18, 2010
GIS TRACKING NUMBER: 17-100-003	PROJECT No: SX03733
PROJECTION & DATUM: UTM Zone 13 NAD27	DRAWN BY: EO
	

\\By-fs1\by-ee-gis\Projects\SX\SX03733\_Shore-Gold\_Diamond\_1\Mapping\11\_wildlife\Baseline\17-100-003.mxd





\\by-fs1\by-ee-gis\Projects\SX\SX03733\_Shore-Gold\_Diamond\_1\Mapping\11\_wildlife\Baseline\17-100-002.mxd

**Legend**

- Amphibian Call Location
- Elevation Contour (10 m)
- Watercourse
- Waterbody
- Wetland
- Indian Reserve
- Project LSA
- Wildlife RSA

**Reference**

Base data: NTS 1:50,000 scale  
 Amphibian Call Location: EcoDynamics Consulting Inc.

CLIENT: 	
PROJECT: Star - Orion South Diamond Project	
<b>Amphibian Survey Point Locations</b>	
	<b>Figure 5.3.3-13</b> DATE: May 18, 2010
GIS TRACKING NUMBER: 17-100-002	PROJECT No: SX03733
PROJECTION & DATUM: UTM Zone 13 NAD27	DRAWN BY: EO