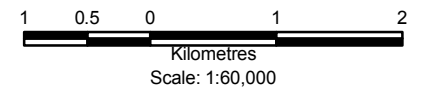


- Legend**
- Watercourse
  - Waterbody
  - Local Study Area
  - Baseline and Inventory Disturbances
  - Forest Harvest and Regeneration
- Vegetation Class**
- Balsam Poplar - Spruce : Moist
  - Balsam Poplar - Trembling Aspen : Moist
  - Black Spruce : Moist
  - Brushland / Grassland
  - Jack Pine - Trembling Aspen : Dry to Fresh
  - Jack Pine : Dry to Fresh
  - Marsh
  - Shrub Swamp
  - Treed Bog
  - Treed Swamp
  - Treed and Open Fen
  - Trembling Aspen - Spruce : Fresh
  - Trembling Aspen : Dry to Fresh
  - Trembling Aspen : Moist
  - Unclassified Wetland - Non-Forested
  - White Spruce : Fresh
  - White Spruce : Moist
  - Reclaimed Site

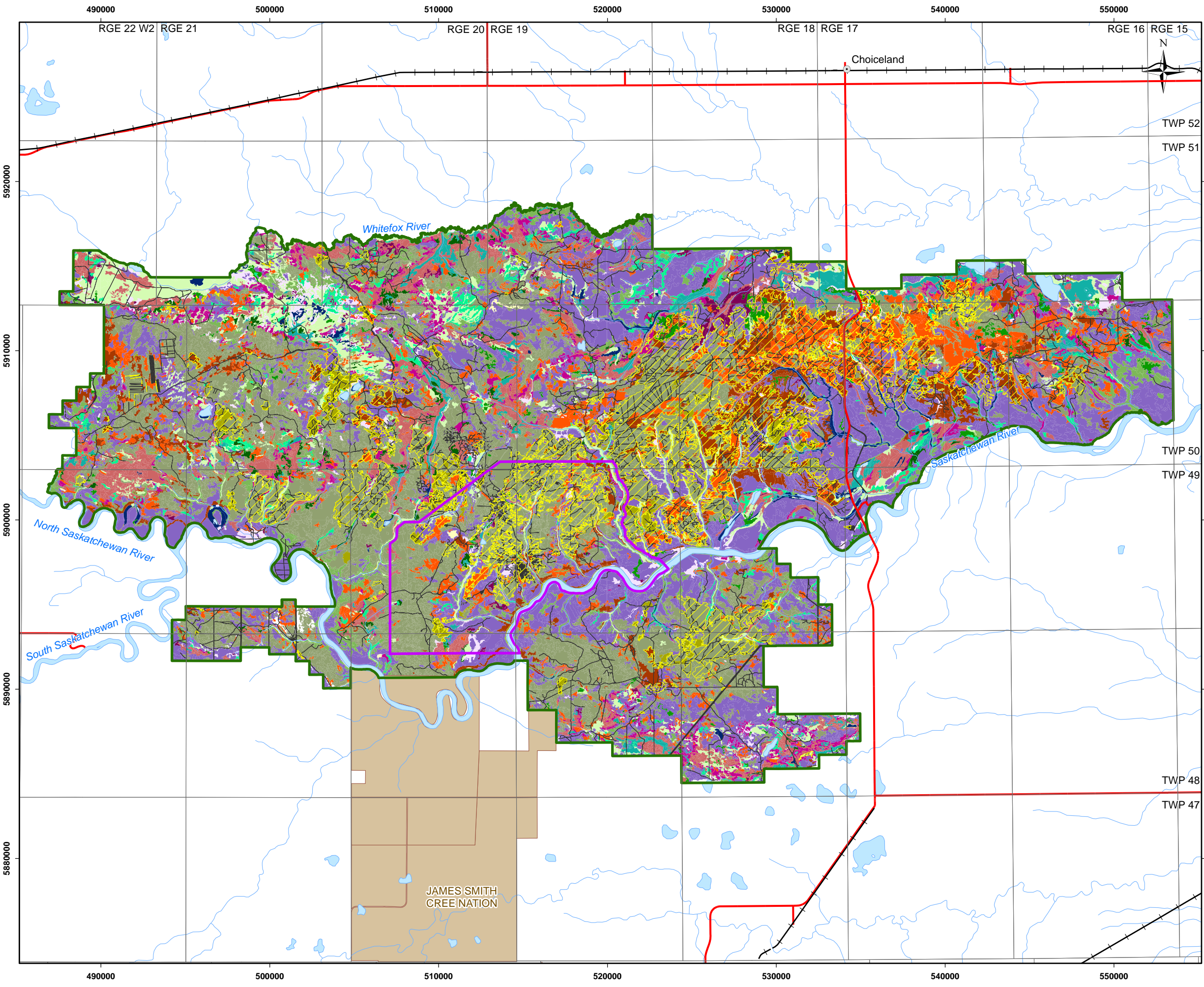


**Reference**  
 Base data: NRCan National Road Network  
 NTS 1:50,000 scale: GeoSask  
 Mine facilities: AMEC dated July 2010  
 Saskatchewan Ministry of Environment 2008.

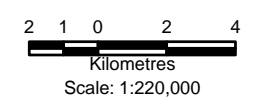
CLIENT: 		
PROJECT: Star - Orion South Diamond Project		
<b>Vegetation Classes in the LSA Baseline Case</b>		
DATE: December 2010	ANALYST: TM	<b>Figure 5.3.2-1</b>
JOB No: SX0373302	QA/QC: MY	PDF FILE: Fig5.3.2-1 LSA Baseline Veg Classes 10-12-14.pdf
GIS FILE: Fig5.3.2-1 LSA Baseline Veg Classes.mxd		
PROJECTION: UTM Zone 13	DATUM: NAD27	

S:\GIS\Projects\Shore\_Gold\GIS\Projects\Vegetation\Fig5.3.2-1 LSA Baseline Veg Classes.mxd

S:\GIS\Projects\SA\Shore\_Gold\ArcGIS\Projects\Vegetation\Fig5.3.2-2 RSA Baseline\_Veg Classes.mxd



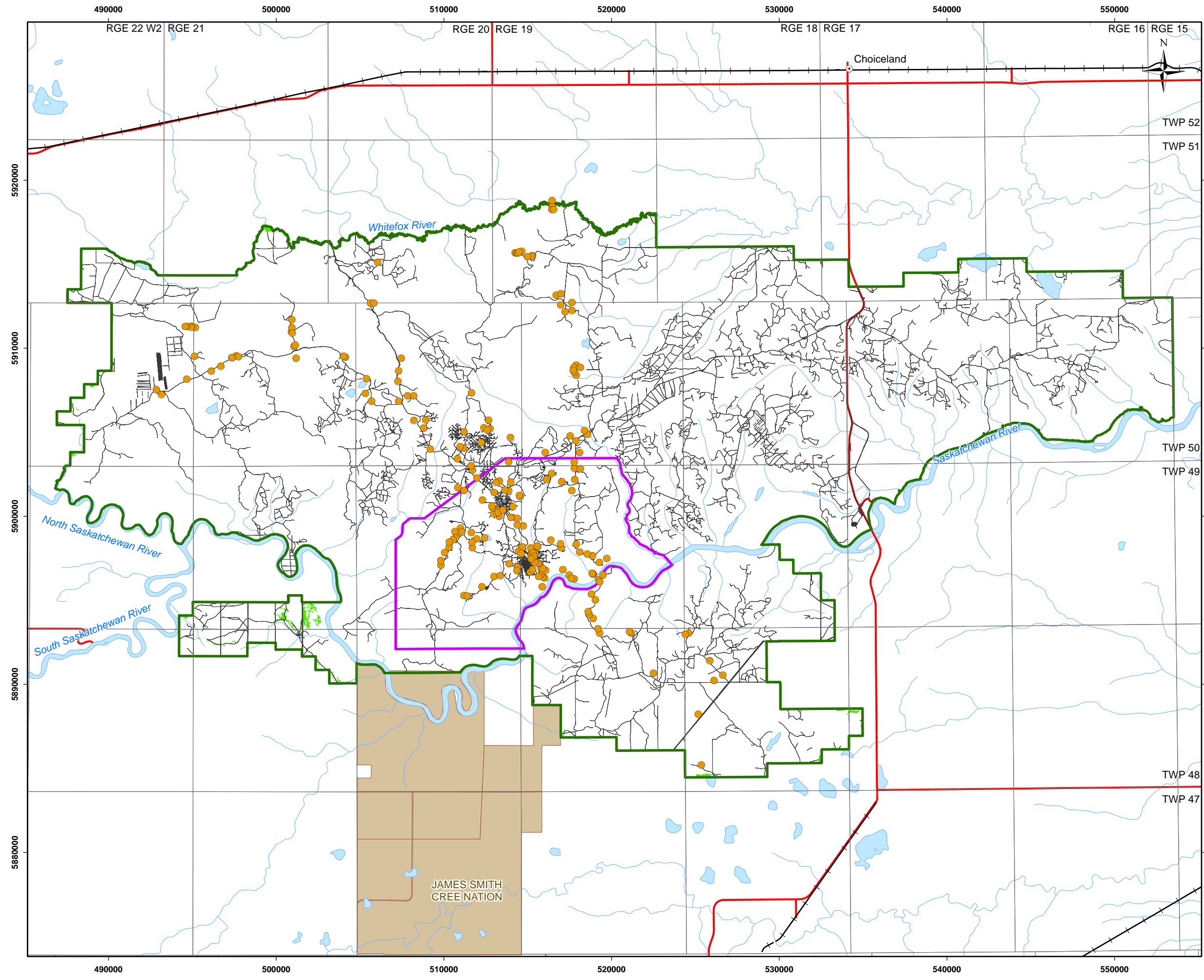
- Legend**
- Town
  - Highway
  - +— Railway
  - Watercourse
  - Waterbody
  - Indian Reserve
  - Local Study Area
  - Regional Study Area
  - Baseline and Inventory Disturbances
- Vegetation Class**
- Balsam Poplar - Spruce : Moist
  - Balsam Poplar - Trembling Aspen : Moist
  - Black Spruce : Moist
  - Brushland / Grassland
  - Jack Pine - Trembling Aspen : Dry to Fresh
  - Jack Pine : Dry to Fresh
  - Marsh
  - Shrub Swamp
  - Treed Bog
  - Treed Swamp
  - Treed and Open Fen
  - Trembling Aspen - Spruce : Fresh
  - Trembling Aspen : Dry to Fresh
  - Trembling Aspen : Moist
  - Unclassified Wetland - Non-Forested
  - White Spruce : Fresh
  - White Spruce : Moist
  - Reclaimed Site
  - Forest Harvest and Regeneration



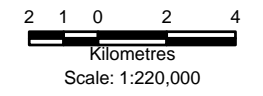
**Reference**  
 Base data: NRCan National Road Network  
 NTS 1:50,000 scale: GeoSask  
 Indian Reserve/Municipality Boundaries: GeoSask

CLIENT: 		
PROJECT: Star - Orion South Diamond Project		
<b>Vegetation Classes in the RSA Baseline Case</b>		
DATE: December 2010	ANALYST: NH	<b>Figure 5.3.2-2</b>
JOB No: SX0373302	QA/QC: MY	PDF FILE: Fig5.3.2-2 RSA Baseline Veg Classes 10-12-09.pdf
GIS FILE: Fig5.3.2-2 RSA Baseline Veg Classes.mxd		
PROJECTION: UTM Zone 13	DATUM: NAD27	

S:\GIS\Projects\S\Shore\_Gold\ArcGIS\Projects\Vegetation\Fig5.3.2-3 RSA Baseline Inspection Location.mxd

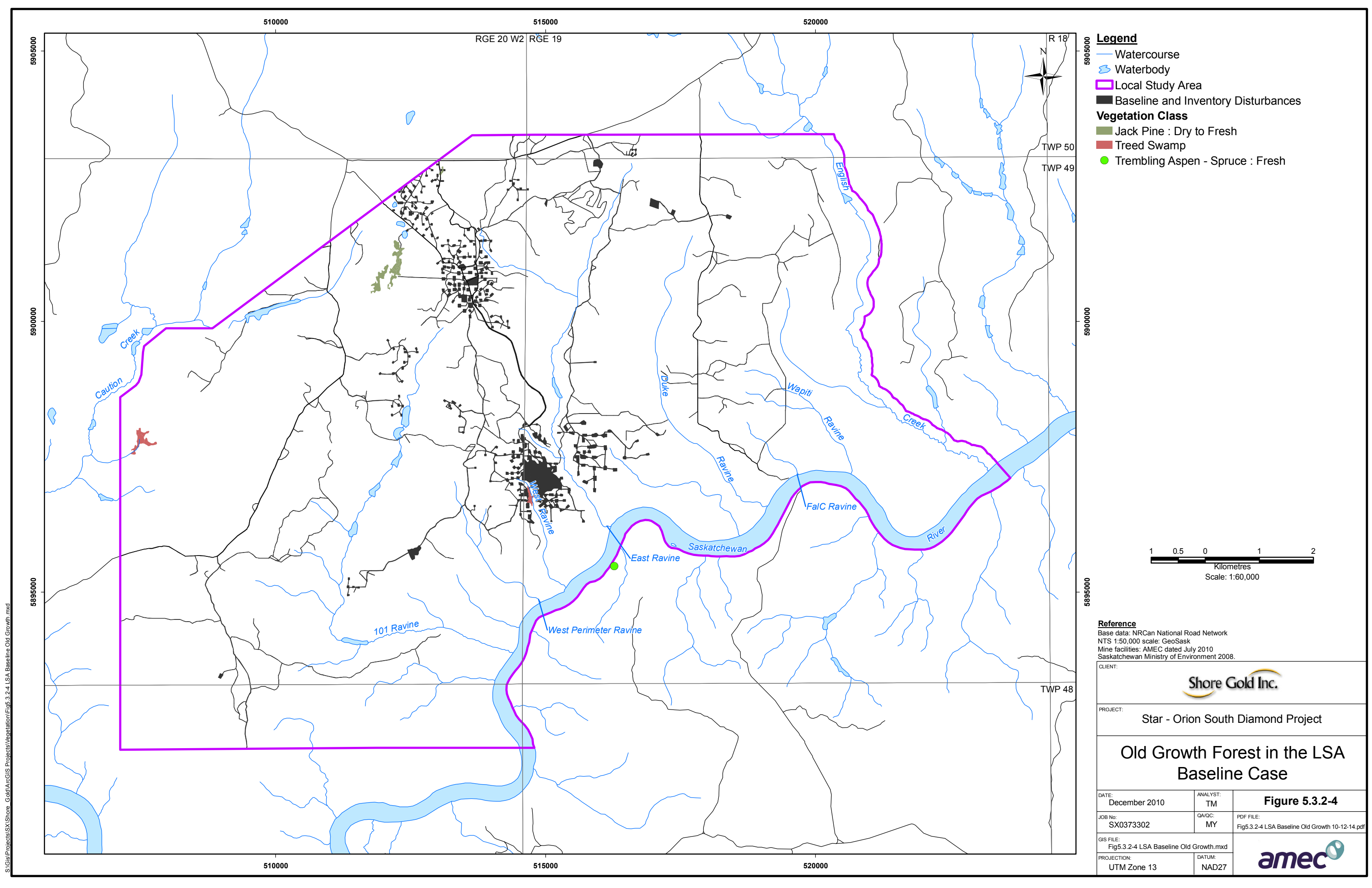


- Legend**
- Town
  - Highway
  - +— Railway
  - Watercourse
  - Waterbody
  - Indian Reserve
  - Local Study Area
  - Regional Study Area
  - Agriculture
  - Baseline and Inventory Disturbances
  - Inspection Location



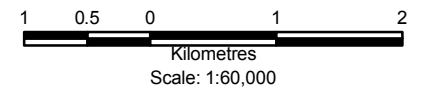
**Reference**  
 Base data: NRCan National Road Network  
 NTS 1:50,000 scale: GeoSask  
 Indian Reserve/Municipality Boundaries: GeoSask

CLIENT: 		
PROJECT: Star - Orion South Diamond Project		
<b>Inspection Locations in the RSA Baseline Case</b>		
DATE: December 2010	ANALYST: NH	<b>Figure 5.3.2-3</b>
JOB No: SX0373302	QA/QC: MY	PDF FILE: Fig5.3.2-3 RSA Baseline Inspection Location 10-12-09.pdf
GIS FILE: Fig5.3.2-3 RSA Baseline Inspection Location.mxd		
PROJECTION: UTM Zone 13	DATUM: NAD27	





S:\GIS\Projects\SV\Shore\_Gold\GIS\Projects\Vegetation\Fig5.3.2-4\_LSA\_Baseline\_Old\_Growth.mxd

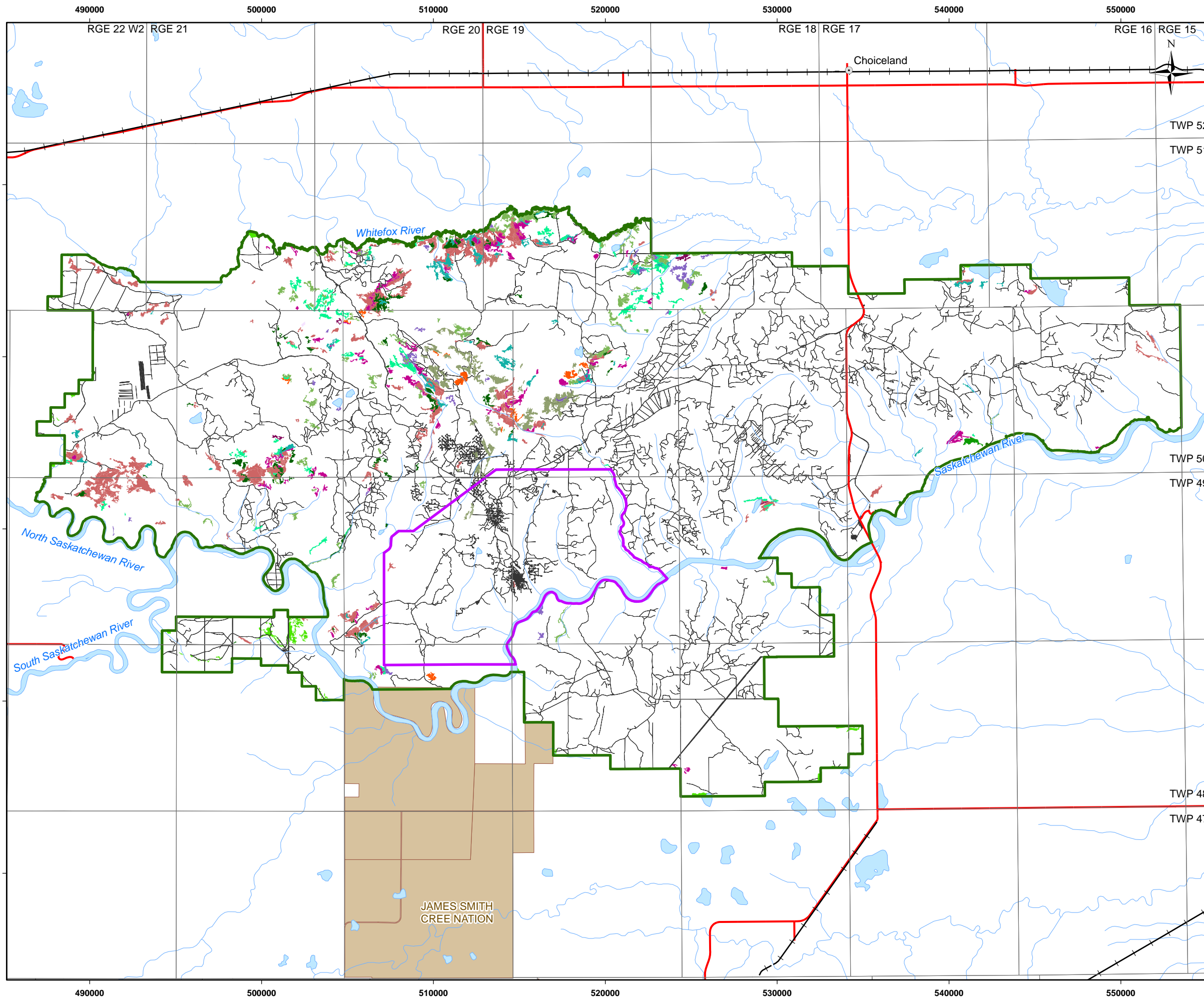
- Legend**
- Watercourse
  - Waterbody
  - Local Study Area
  - Baseline and Inventory Disturbances
- Vegetation Class**
- Jack Pine : Dry to Fresh
  - Tred Swamp
  - Trembling Aspen - Spruce : Fresh



**Reference**  
 Base data: NRCan National Road Network  
 NTS 1:50,000 scale: GeoSask  
 Mine facilities: AMEC dated July 2010  
 Saskatchewan Ministry of Environment 2008.

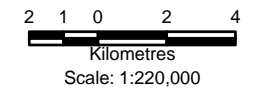
		
PROJECT: Star - Orion South Diamond Project		
<h2 style="margin: 0;">Old Growth Forest in the LSA Baseline Case</h2>		
DATE: December 2010	ANALYST: TM	<b>Figure 5.3.2-4</b>
JOB No: SX0373302	QA/QC: MY	PDF FILE: Fig5.3.2-4 LSA Baseline Old Growth 10-12-14.pdf
GIS FILE: Fig5.3.2-4 LSA Baseline Old Growth.mxd		
PROJECTION: UTM Zone 13	DATUM: NAD27	

S:\Projects\SA\Shore\_Gold\ArcGIS\Projects\Vegetation\Fig5.3.2-5 RSA Baseline Old Growth.mxd



**Legend**

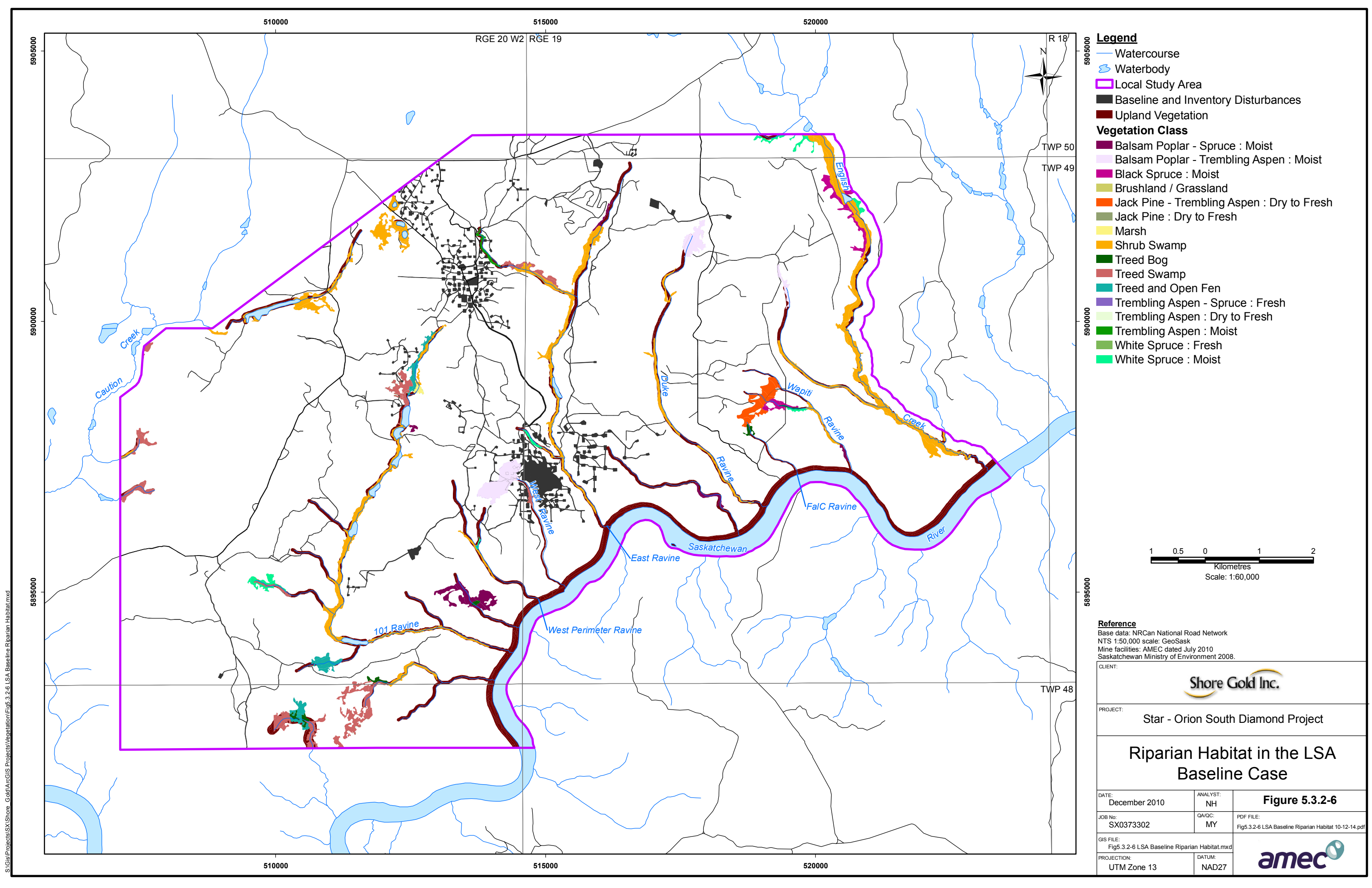
- Town
  - Highway
  - + Railway
  - Watercourse
  - Waterbody
  - Indian Reserve
  - Local Study Area
  - Regional Study Area
  - Agriculture
  - Baseline and Inventory Disturbances
- Vegetation Class**
- Balsam Poplar - Spruce : Moist
  - Balsam Poplar - Trembling Aspen : Moist
  - Black Spruce : Moist
  - Jack Pine - Trembling Aspen : Dry to Fresh
  - Jack Pine : Dry to Fresh
  - Treed Bog
  - Treed Swamp
  - Treed and Open Fen
  - Trembling Aspen - Spruce : Fresh
  - Trembling Aspen : Moist
  - White Spruce : Fresh
  - White Spruce : Moist



**Reference**

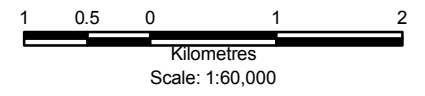
Base data: NRCan National Road Network  
 NTS 1:50,000 scale: GeoSask  
 Indian Reserve/Municipality Boundaries: GeoSask  
 Saskatchewan Ministry of Environment 2008.

CLIENT: 		
PROJECT: Star - Orion South Diamond Project		
<b>Old Growth Forest in the RSA Baseline Case</b>		
DATE: December 2010	ANALYST: TM	<b>Figure 5.3.2-5</b>
JOB No: SX0373302	QA/QC: MY	PDF FILE: Fig5.3.2-5 RSA Baseline Old Growth 10-12-09.pdf
GIS FILE: Fig5.3.2-5 RSA Baseline Old Growth.mxd		
PROJECTION: UTM Zone 13	DATUM: NAD27	





**Legend**

- Watercourse
  - Waterbody
  - Local Study Area
  - Baseline and Inventory Disturbances
  - Upland Vegetation
- Vegetation Class**
- Balsam Poplar - Spruce : Moist
  - Balsam Poplar - Trembling Aspen : Moist
  - Black Spruce : Moist
  - Brushland / Grassland
  - Jack Pine - Trembling Aspen : Dry to Fresh
  - Jack Pine : Dry to Fresh
  - Marsh
  - Shrub Swamp
  - Treed Bog
  - Treed Swamp
  - Treed and Open Fen
  - Trembling Aspen - Spruce : Fresh
  - Trembling Aspen : Dry to Fresh
  - Trembling Aspen : Moist
  - White Spruce : Fresh
  - White Spruce : Moist



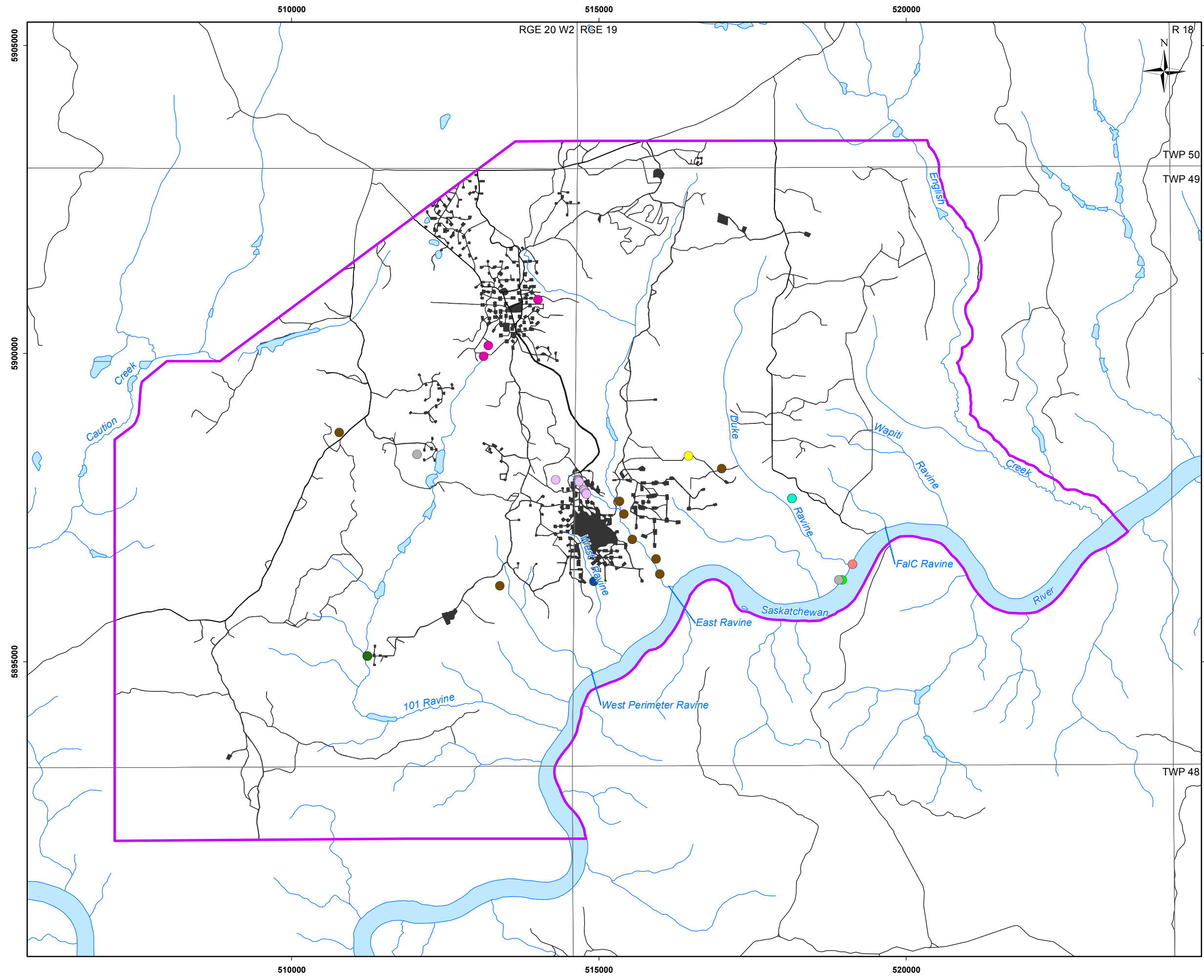
**Reference**

Base data: NRCan National Road Network  
 NTS 1:50,000 scale: GeoSask  
 Mine facilities: AMEC dated July 2010  
 Saskatchewan Ministry of Environment 2008.

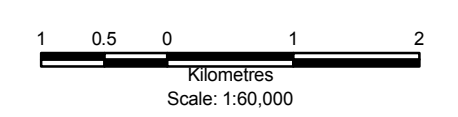
		
PROJECT: Star - Orion South Diamond Project		
<h2 style="margin: 0;">Riparian Habitat in the LSA Baseline Case</h2>		
DATE: December 2010	ANALYST: NH	<b>Figure 5.3.2-6</b>
JOB No: SX0373302	QA/QC: MY	PDF FILE: Fig5.3.2-6 LSA Baseline Riparian Habitat 10-12-14.pdf
GIS FILE: Fig5.3.2-6 LSA Baseline Riparian Habitat.mxd		
PROJECTION: UTM Zone 13	DATUM: NAD27	

S:\GIS\Projects\SY.Shore\_Gold\GIS\Projects\Vegetation\Fig5.3.2-6\_LSA\_Baseline\_Riparian\_Habitat.mxd

S:\GIS\Projects\Shore\_Gold\GIS\Projects\Vegetation\Fig5.3.2-7 LSA Baseline Rare Plants.mxd



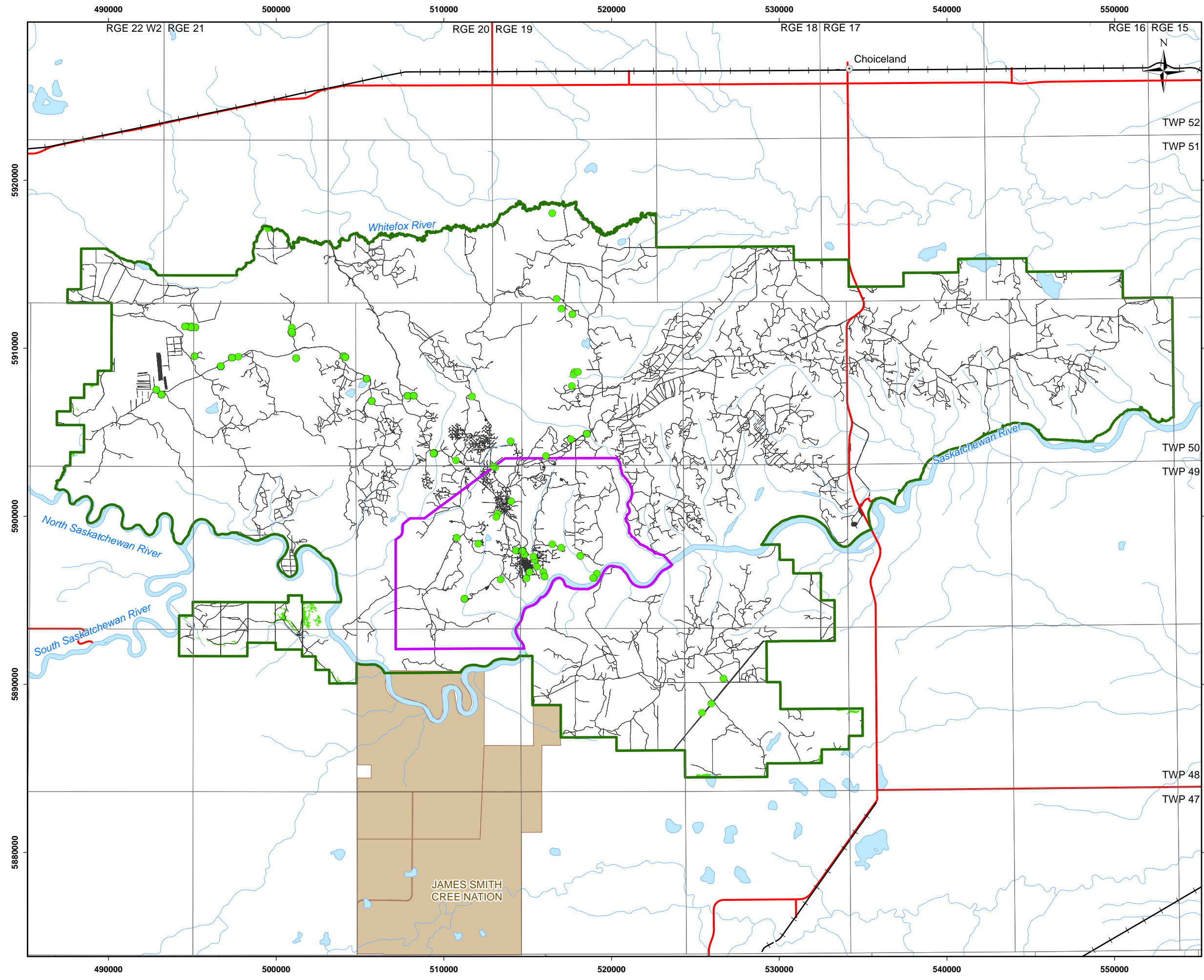
- Legend**
- Watercourse
  - Waterbody
  - Local Study Area
  - Baseline and Inventory Disturbances
  - *Calamagrostis lapponica*
  - *Carex hystericina*
  - *Carex pseudocyperus*
  - *Chenopodium pratericola*
  - *Coeloglossum viride* var. *virescens*
  - *Lilium philadelphicum* var. *andinum*
  - *Listera cordata* var. *cordata*
  - *Lonicera oblongifolia*
  - *Scirpus pallidus*
  - *Thalictrum occidentale* var. *occidentale*



**Reference**  
 Base data: NRCan National Road Network  
 NTS 1:50,000 scale: GeoSask  
 Mine facilities: AMEC dated July 2010  
 Saskatchewan Ministry of Environment 2008.

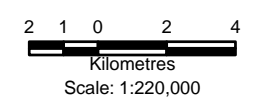
CLIENT: 		
PROJECT: Star - Orion South Diamond Project		
<b>Rare Plants in the LSA Baseline Case</b>		
DATE: December 2010	ANALYST: TM	<b>Figure 5.3.2-7</b>
JOB No: SX0373302	QA/QC: MY	PDF FILE: Fig5.3.2-7 LSA Baseline Rare Plants 10-12-14.pdf
GIS FILE: Fig5.3.2-7 LSA Baseline Rare Plants.mxd		
PROJECTION: UTM Zone 13	DATUM: NAD27	

S:\Projects\SA\Shore\_Gold\ArcGIS\Projects\Vegetation\Fig5.3.2-8 RSA Baseline Rare Plants.mxd



**Legend**

- Town
- Highway
- +— Railway
- Watercourse
- Waterbody
- Indian Reserve
- Local Study Area
- Regional Study Area
- Agriculture
- Baseline and Inventory Disturbances
- Rare Plant



**Reference**

Base data: NRCan National Road Network  
 NTS 1:50,000 scale: GeoSask  
 Indian Reserve/Municipality Boundaries: GeoSask

CLIENT: 		
PROJECT: Star - Orion South Diamond Project		
<b>Rare Plants in the RSA Baseline Case</b>		
DATE: December 2010	ANALYST: CF	<b>Figure 5.3.2-8</b>
JOB No: SX0373302	QA/QC: MY	
GIS FILE: Fig5.3.2-8 RSA Baseline Rare Plants.mxd		PDF FILE: Fig5.3.2-8 RSA Baseline Rare Plants 10-12-09.pdf
PROJECTION: UTM Zone 13	DATUM: NAD27	