

**Legend**

- Watercourse
- Contour(10m)
- Waterbody
- Local Study Area
- Fish Survey Areas
- First Nations Reserve

0 1 2 4  
Kilometres  
Scale: 1:70,000

**Note:**  
Based on Pre-feasibility Study

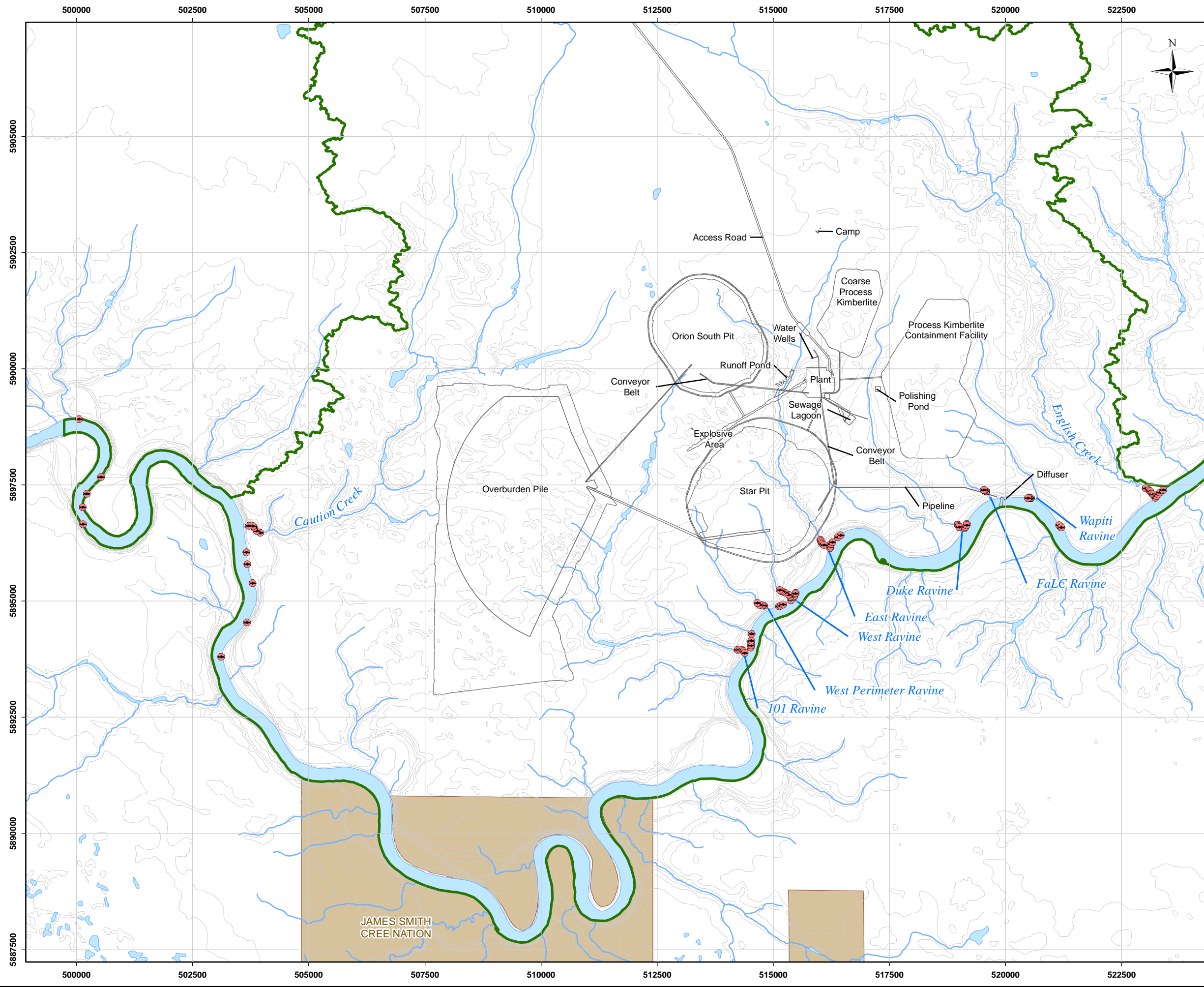
**Reference**  
Base data: NRCan National Road Network;  
NTS 1:50,000 scale: GeoSask  
Indian Reserve/ Municipality Boundaries: GeoSask  
Mine facilities: Dated August 30, 2011

CLIENT: 		
PROJECT: Star - Orion South Diamond Project		
<b>Aquatic Survey Study Areas in the LSA</b>		
DATE: August, 2012	ANALYST: EO	<b>Figure 5.3.1-1</b>
JOB No: SX0373302	QA/QC: KW	
GIS FILE: 10-100-002_v3.mxd		PDF FILE: 10-100-002_v3_aquatics.pdf
PROJECTION: UTM Zone 13	DATUM: NAD27	

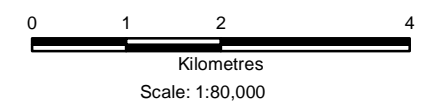
Y:\GIS\Projects\SX\SX03733\_Shore-Gold\_Diamond\_1\Maping\10\_fishes-aquatics\Baseline\10-100-002\_v3.mxd



Y:\GIS\Projects\SX\SX03733\_Shore-Gold\_Diamond\_1\Wapping\10\_fisheries-aquatics\Baseline\10-100-003\_v2.mxd



- Legend**
- Benthic Invertebrate Station
  - Watercourse
  - Contour(10m)
  - Waterbody
  - Local Study Area
  - First Nations Reserve



**Note:**  
Based on Pre-feasibility Study

**Reference**  
Base data: NRCan National Road Network;  
NTS 1:50,000 scale: GeoSask  
Indian Reserve/ Municipality Boundaries: GeoSask  
Mine facilities: AMEC dated July 2010

CLIENT: 		
PROJECT: Star - Orion South Diamond Project		
<b>Benthic Invertebrate Stations in the Local Study Area</b>		
DATE: August, 2012	ANALYST: MY	<b>Figure 5.3.1-2</b>
JOB No: SX0373302	QA/QC: KW	
GIS FILE: 10-100-003_v2.mxd		PDF FILE: 10-100-003_v2_Benthic_Invertebrate.pdf
PROJECTION: UTM Zone 13	DATUM: NAD27	

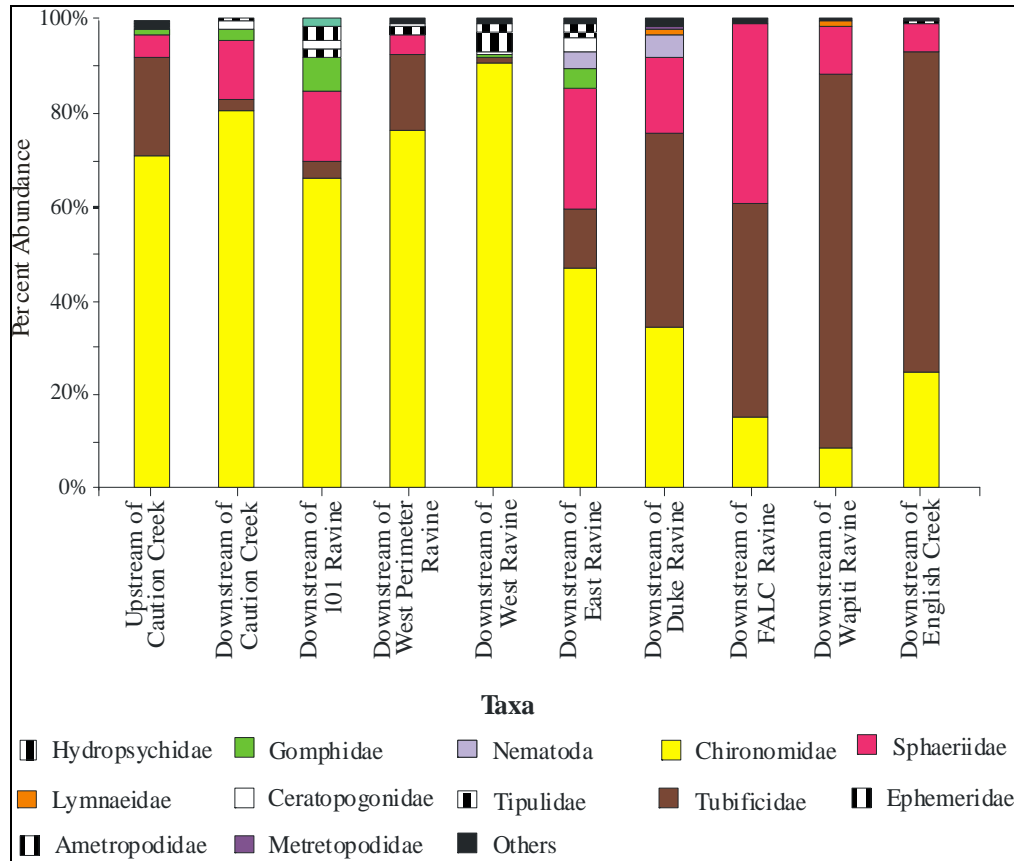
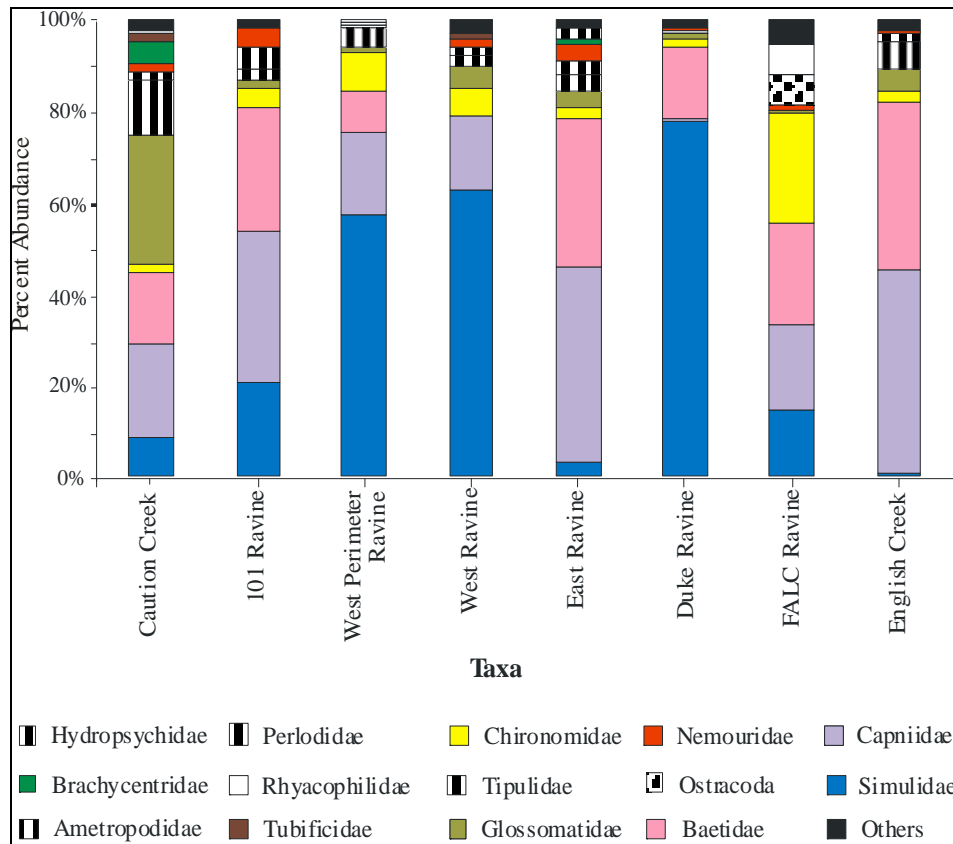


Figure 5.3.1-3: Average Percent Composition of Benthic Invertebrate Abundance in the Saskatchewan River in the Project Local Study Area October 2007 and November 2008



**Figure 5.3.1-4: Average Percent Composition of Benthic Invertebrate Abundance in the Streams in the Project Local Study Area, October 2007 and November 2008**