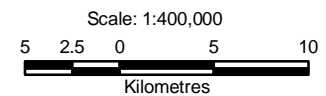


- Legend**
- Population
  - Water Quality Station
  - - - Rural Road
  - Highway
  - ~ Watercourse
  - Waterbody
  - Local Study Area
  - Regional Study Area
  - First Nations Reserve

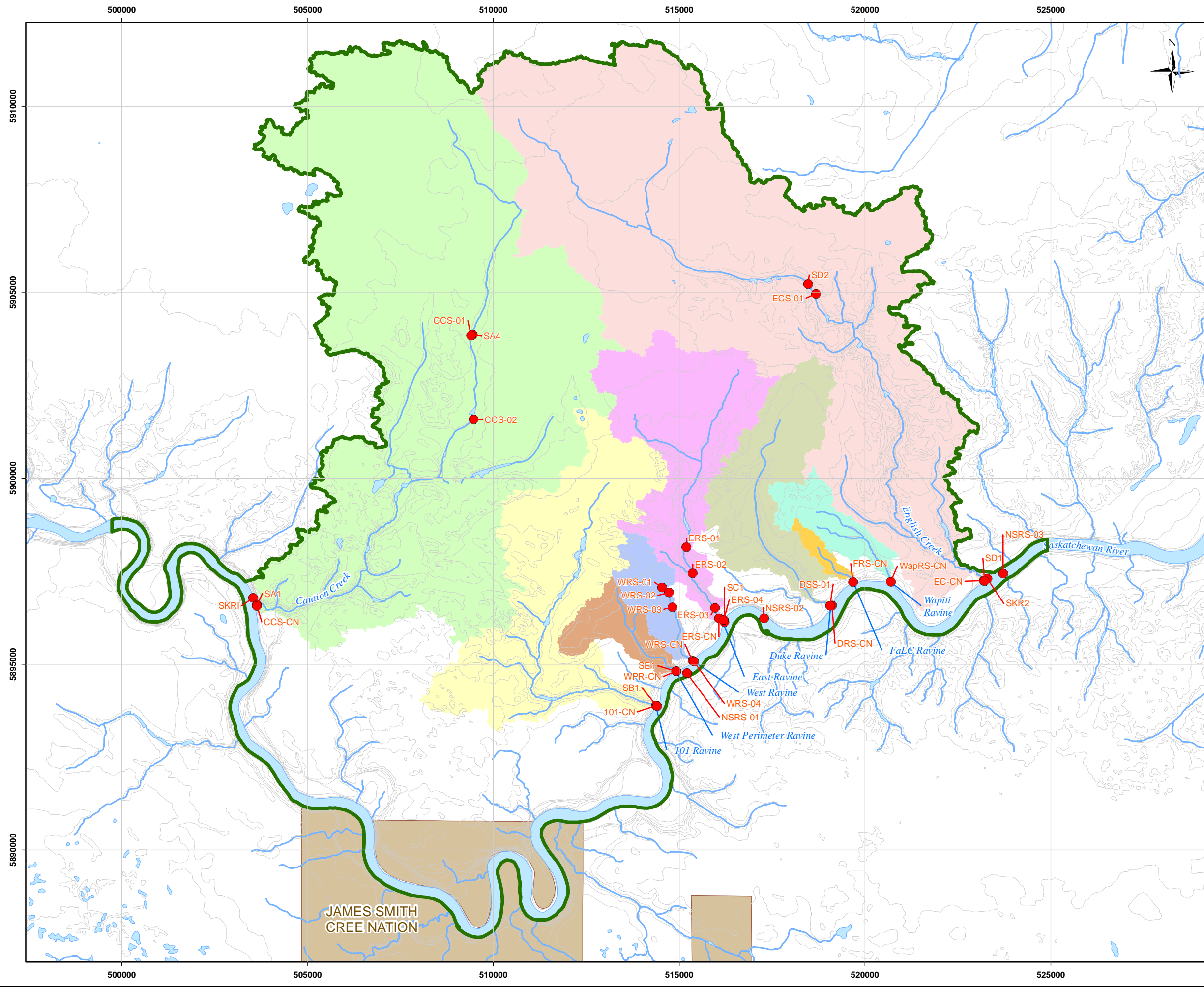


**Reference**  
 Base data: NRCan National Road Network;  
 NTS 1:250,000 scale: GeoSask  
 Indian Reserve: GeoSask  
 Mine facilities: AMEC, dated July 2010

CLIENT: 		
PROJECT: Star - Orion South Diamond Project		
<b>Water Quality Stations within Regional Study Area vicinity</b>		
DATE: October, 2010	ANALYST: MY	<b>Figure 5.2.8-1</b>
JOB No: SX0373302	QA/QC: KW	PDF FILE: 09-100-002_waterquality_RSA.pdf
GIS FILE: 09-100-002.mxd		
PROJECTION: UTM Zone 13	DATUM: NAD27	

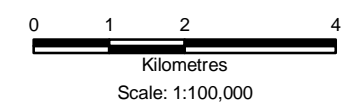
Y:\GIS\Projects\SX03733\_Share\_Gold\_Diamond\_1\Mapping\09\_water\_quality\Baseline\09-100-002.mxd

Y:\GIS\Projects\SX03733\_Shore-Gold\_Diamond\_1\Mapping\09\_water-quality\Baseline\09-100-001.mxd



- Legend**
- Water Quality Station
  - Road
  - Watercourse
  - Contour(10m)
  - Waterbody
  - Local Study Area
  - First Nations Reserve

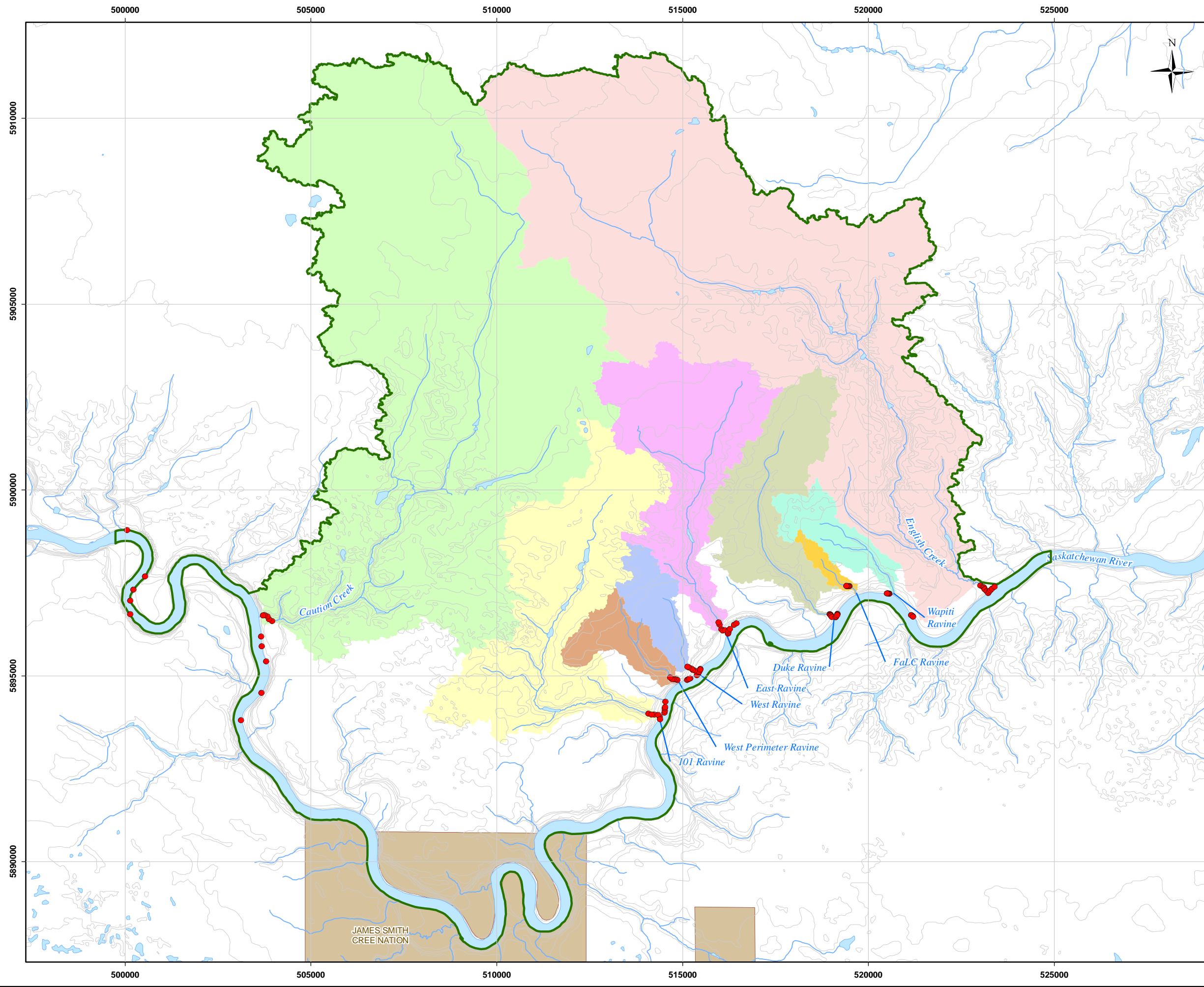
- Major Watershed**
- 101 Ravine
  - Caution Creek
  - Duke Ravine
  - FaLC Ravine
  - East Ravine
  - English Creek
  - Wapiti Ravine
  - West Perimeter Ravine
  - West Ravine



**Reference**  
 Base data: NRCan National Road Network;  
 NTS 1:50,000 scale: GeoSask  
 Indian Reserve/ Municipality Boundaries: GeoSask  
 Mine facilities: AMEC dated July 2010

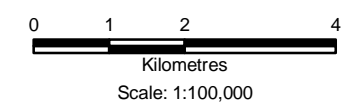
CLIENT: 		
PROJECT: Star - Orion South Diamond Project		
<b>Water Quality Stations in the Local Study Area</b>		
DATE: October 2010	ANALYST: MY	<b>Figure 5.2.8-2</b>
JOB No: SX0373302	QA/QC: KW	PDF FILE: 09-100-001_waterquality_LSA.pdf
GIS FILE: 09-100-001.mxd		
PROJECTION: UTM Zone 13	DATUM: NAD27	

Y:\GIS\Projects\SX037333\_Shore-Gold\_Diamond\_1\Mapping\09\_water-quality\Baseline\09-100-003.mxd



- Legend**
- Sediment Station
  - Road
  - Watercourse
  - Contour(10m)
  - Waterbody
  - Local Study Area
  - First Nations Reserve

- Major Watershed**
- 101 Ravine
  - Caution Creek
  - Duke Ravine
  - FaLC Ravine
  - East Ravine
  - English Creek
  - Wapiti Ravine
  - West Perimeter Ravine
  - West Ravine



**Reference**  
 Base data: NRCan National Road Network;  
 NTS 1:50,000 scale: GeoSask  
 Indian Reserve/ Municipality Boundaries: GeoSask  
 Mine facilities: AMEC dated July 2010

CLIENT: 		
PROJECT: Star - Orion South Diamond Project		
<b>Sediment Stations in the Local Study Area</b>		
DATE: October 2010	ANALYST: MY	<b>Figure 5.2.8-3</b>
JOB No: SX0373302	QA/QC: ST	PDF FILE: 09-100-003_sediment_station.pdf
GIS FILE: 09-100-003.mxd		
PROJECTION: UTM Zone 13	DATUM: NAD27	