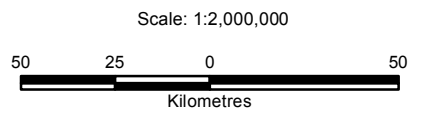


- Legend**
- Project Location
 - Towns & Cities
 - Highway, Paved
 - - - Highway, Unpaved
 - Railway
 - Waterbody
 - Watercourse

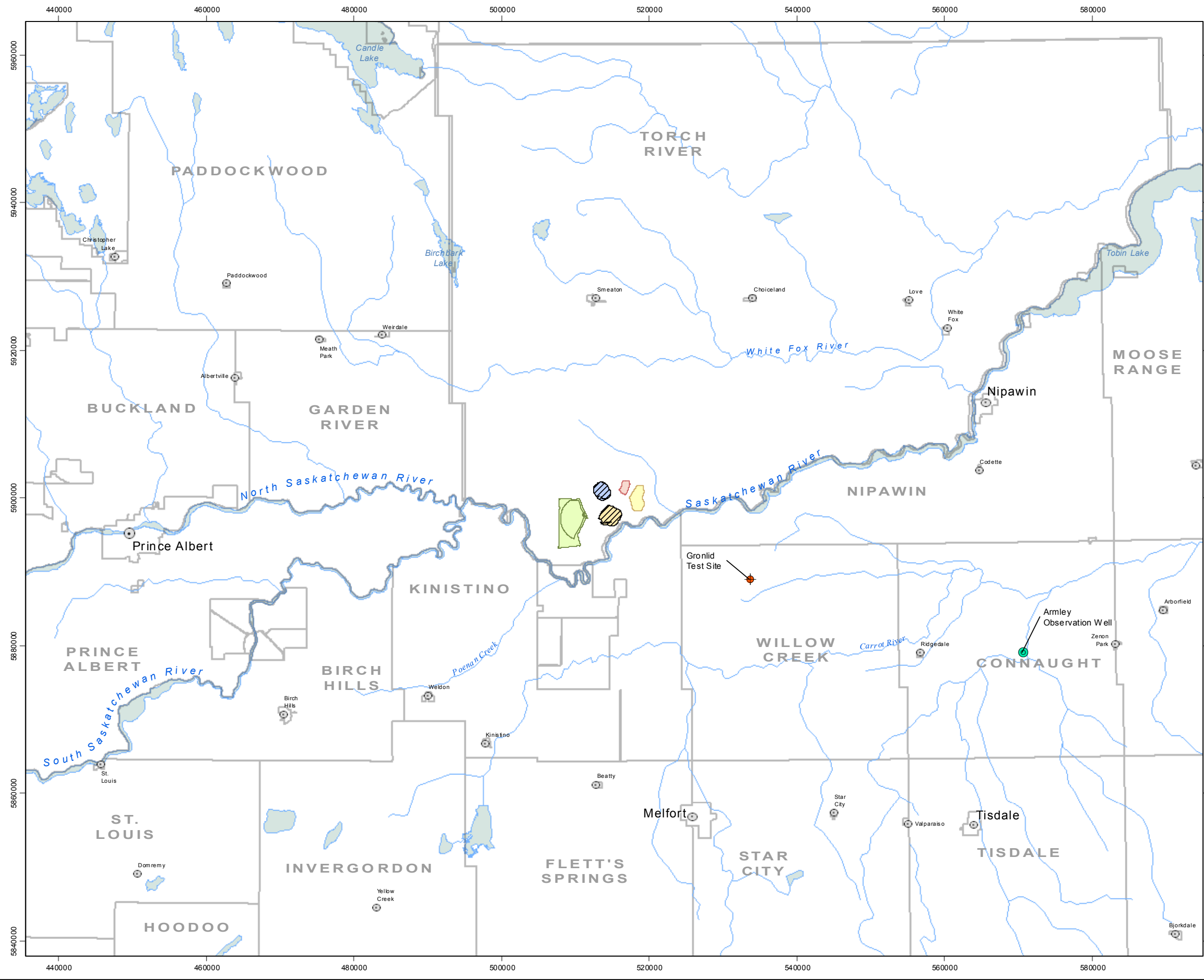


Reference
 Base data: NTDB Tile 073H, 073A; NRN.
 Mine facilities: Amec, dated 19 February 2009

CLIENT: 		
PROJECT: Star - Orion South Diamond Project		
Regional Site Location Map		
DATE: Dec 7, 2010	ANALYST: RM	Figure 5.2.7-1
JOB No: SX0373301	QA/QC: SG	
GIS FILE: Figure 5.2.7-1 Regional Site Location Map.mxd		
PROJECTION: UTM Zone 13	DATUM: NAD83	

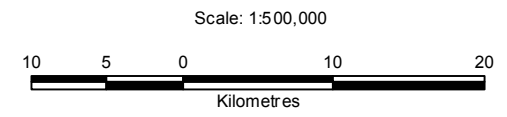
C:\Users\Rachel\Documents\GIS_Work\SX0373302 - Shore Gold\MAPS\Hydro\Basemap\Figure 5.2.7-1 Regional Site Location Map.mxd

I:\G713966\GIS_Work\GIS\0373302 - Shore Gold - MAPS\HydroG Base\Line\Figure 5.2.7.2 Local Features near Site.mxd



Legend

- SWA Armley Observation Well
- Gronlid Test Site monitoring well
- Rural Towns
- Rural Municipalities
- Highway, Paved
- Highway, Unpaved
- Starpit
- Orion South Pit
- Overburden Piles
- Coarse PK
- PKCF
- Dam
- Railway
- Vegetation
- Waterbody
- Wetlands
- Watercourse
- Parks

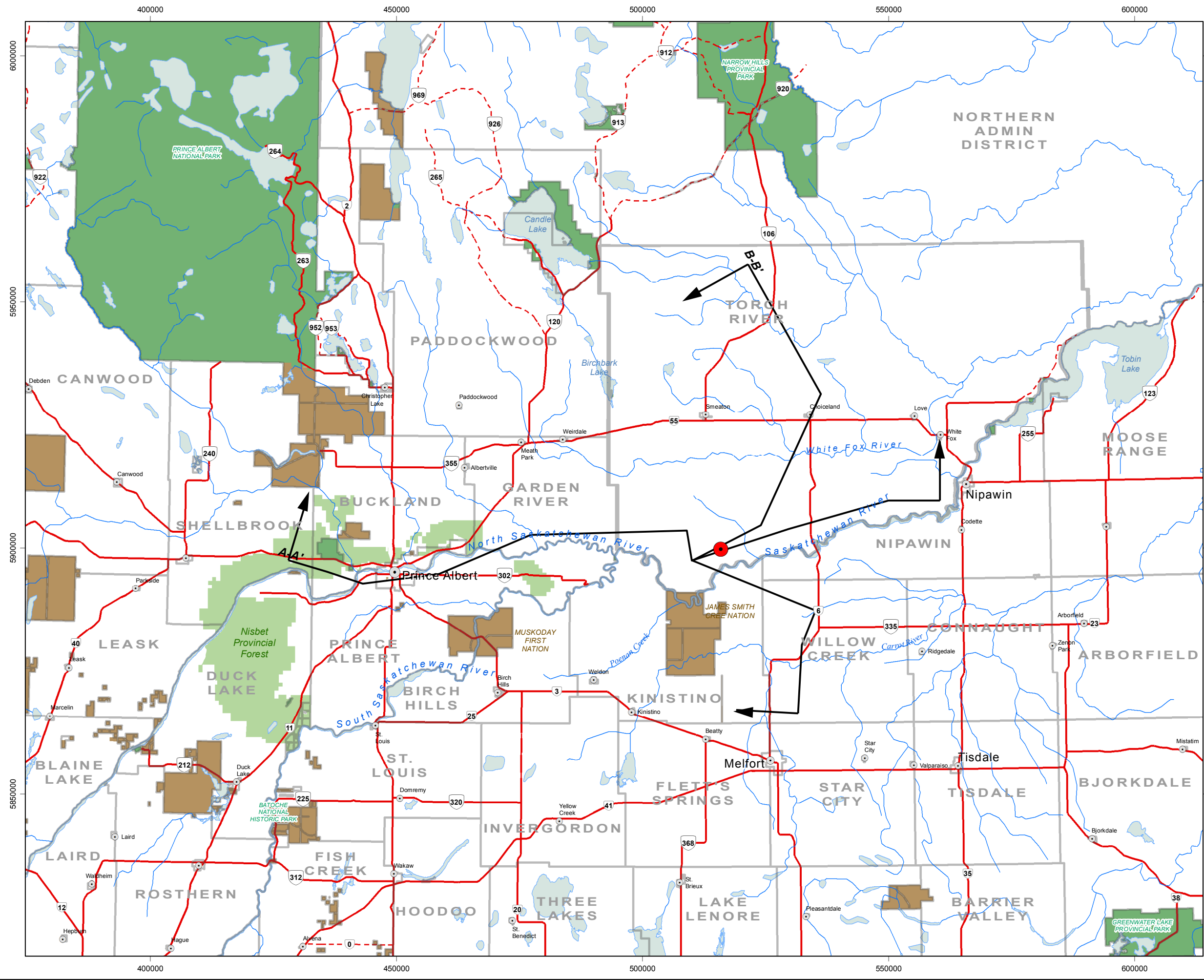


Reference

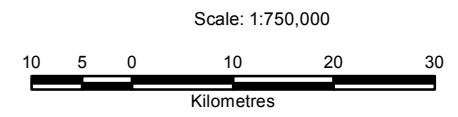
Base data: NTDB Tile 073H, 073A; NRN.
 Mine facilities: Amec, dated 19 February 2009

CLIENT: 		
PROJECT: Star - Orion South Diamond Project		
Local Features near Site		
DATE: Dec 22, 2011	ANALYST: RM	Figure 5.2.7-2
JOB No: SX0373301	QA/QC: SG	PDF FILE: Figure 5.2.7.2 Local Features near Site.pdf
GIS FILE: Figure 5.2.7.2 Local Features near Site.mxd		
PROJECTION: UTM Zone 13	DATUM: NAD83	

C:\Users\Rachel\Documents\GIS_Work\SX03733_02 - Shore Gold\MAPS\HydroG_Basemap\Figure 5.2.7-3 Cross Section Location Map.mxd



- Legend**
- Project Location
 - Cross Section Locations
 - Rural Towns
 - Rural Municipalities
 - Highway, Paved
 - - - Highway, Unpaved
 - Railway
 - Vegetation
 - Waterbody
 - Wetlands
 - Watercourse
 - Parks
 - Indian Reservations

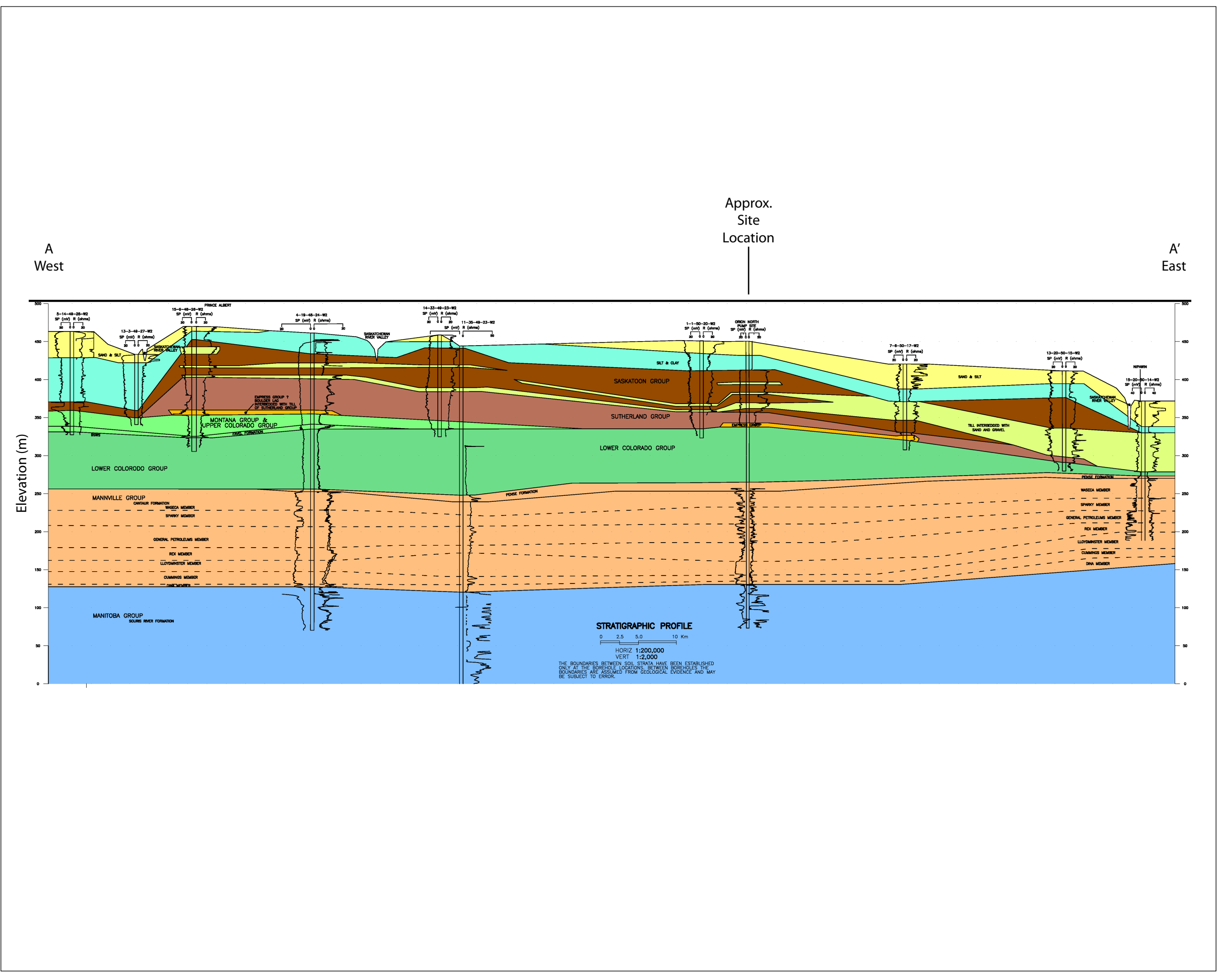


Reference

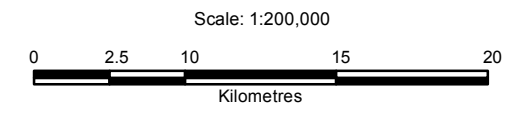
Base data: NTDB Tile 073H, 073A; NRN.
 Mine facilities: Amec, dated 19 February 2009

CLIENT: 		
PROJECT: Star - Orion South Diamond Project		
Cross Section Location Map		
DATE: Dec 7, 2010	ANALYST: RM	Figure 5.2.7-3
JOB No: SX0373301	QA/QC: SG	
GIS FILE: Figure 5.2.7-3 Cross Section Location Map.mxd		PDF FILE: Figure 5.2.7-3 Cross Section Location Map.pdf
PROJECTION: UTM Zone 13	DATUM: NAD83	

C:\Users\Rachel\Documents\GIS_Work\Gold\MAPS\HydroG_Baseline\Figure 5.2.7.4 Cross Section A-A' East-West.mxd



- Legend**
- Silt & Clay
 - Sand & Silt
 - Sand
 - Saskatoon Group (Till)
 - Sutherland Group (Till)
 - Montana Group and Upper Colorado Group
 - Empress Group
 - Lower Colorado Group
 - Mannville Group
 - Manitoba Group

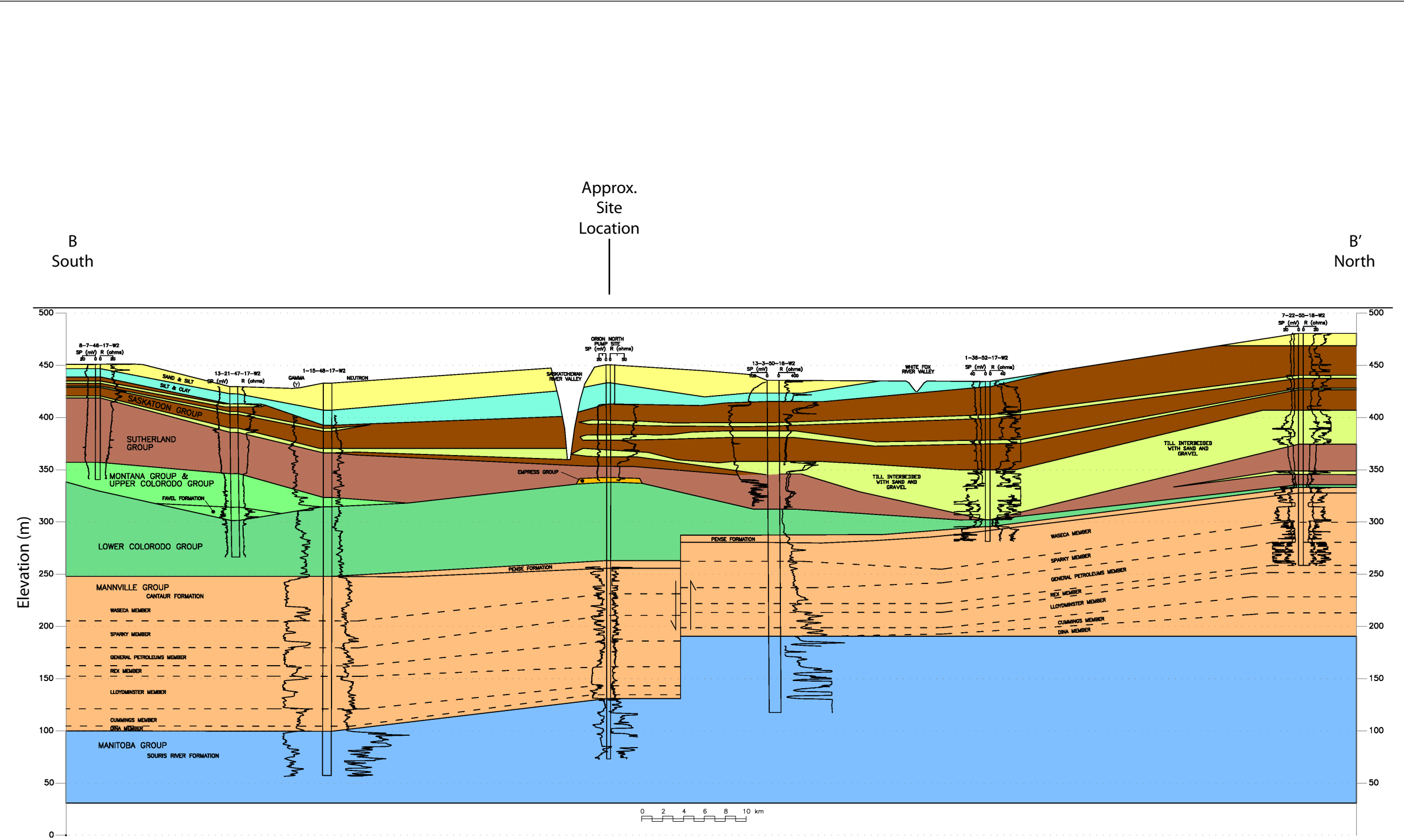


Reference

Base data: NTDB Tile 073H, 073A; NRN.
 Mine facilities: Amec, dated 19 February 2009

CLIENT:		
PROJECT:		
Star - Orion South Diamond Project		
Cross Section A-A' East - West		
DATE:	ANALYST:	Figure 5.2.7-4
Dec 7, 2010	RM	
JOB No:	QA/QC:	PDF FILE:
SX0373301	SG	Figure 5.2.7.4 Cross Section A-A' East-West.pdf
GIS FILE:		
Figure 5.2.7.4 Cross Section A-A' East-West.mxd		
PROJECTION:	DATUM:	
UTM Zone 13	NAD83	

C:\Users\Rachel\Documents\GIS_Work\Gold\MAPS\HydroG_Basemap\Figure 5.2.7-5 Cross Section B-B' North-South.mxd

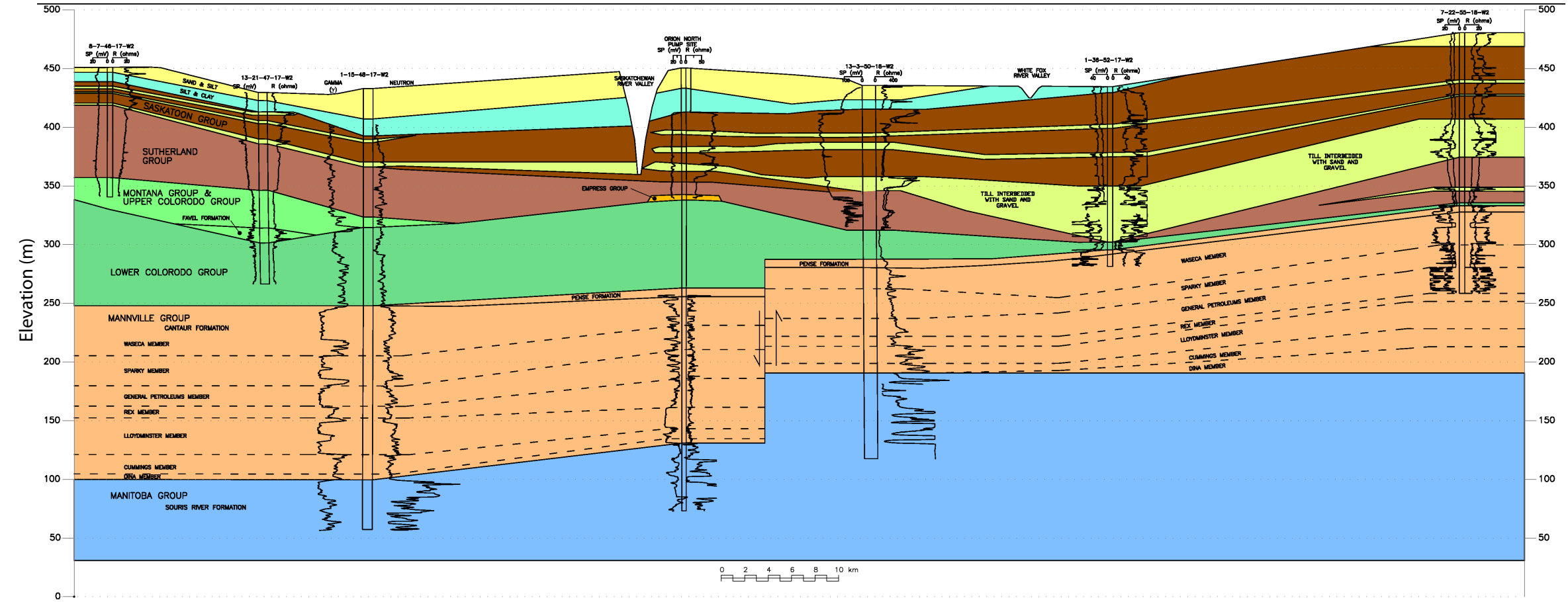


- Legend**
- Silt & Clay
 - Sand & Silt
 - Sand
 - Saskatoon Group (Till)
 - Sutherland Group (Till)
 - Montana Group and Upper Colorado Group
 - Empress Group
 - Lower Colorado Group
 - Mannville Group
 - Manitoba Group

Approx.
Site
Location

B
South

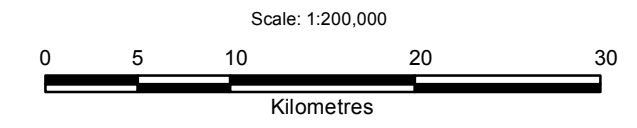
B'
North



STRATIGRAPHIC PROFILE



HORIZ 1:200,000
VERT 1:2,000

THE BOUNDARIES BETWEEN SOIL STRATA HAVE BEEN ESTABLISHED ONLY AT THE BOREHOLE LOCATIONS. BETWEEN BOREHOLES THE BOUNDARIES ARE ASSUMED FROM GEOLOGICAL EVIDENCE AND MAY BE SUBJECT TO ERROR.

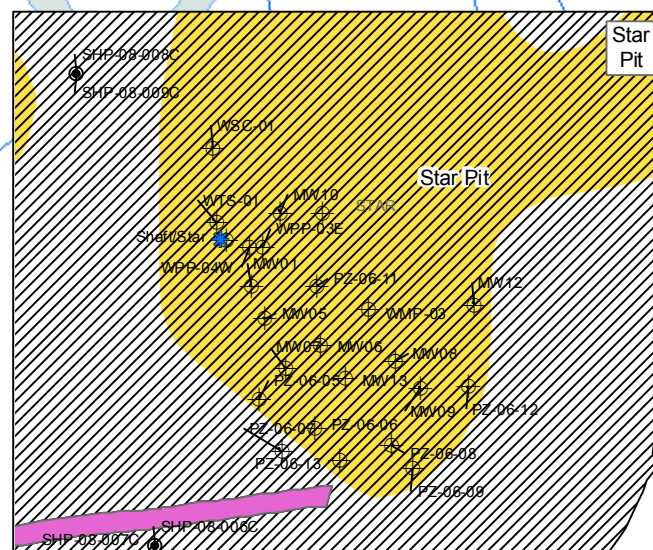
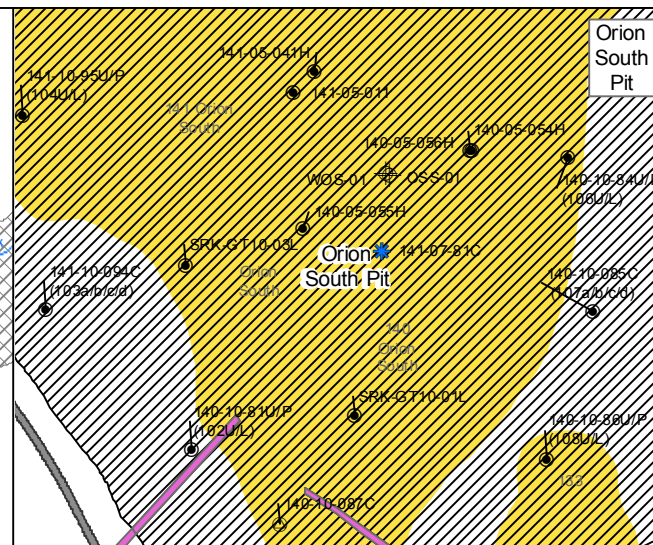
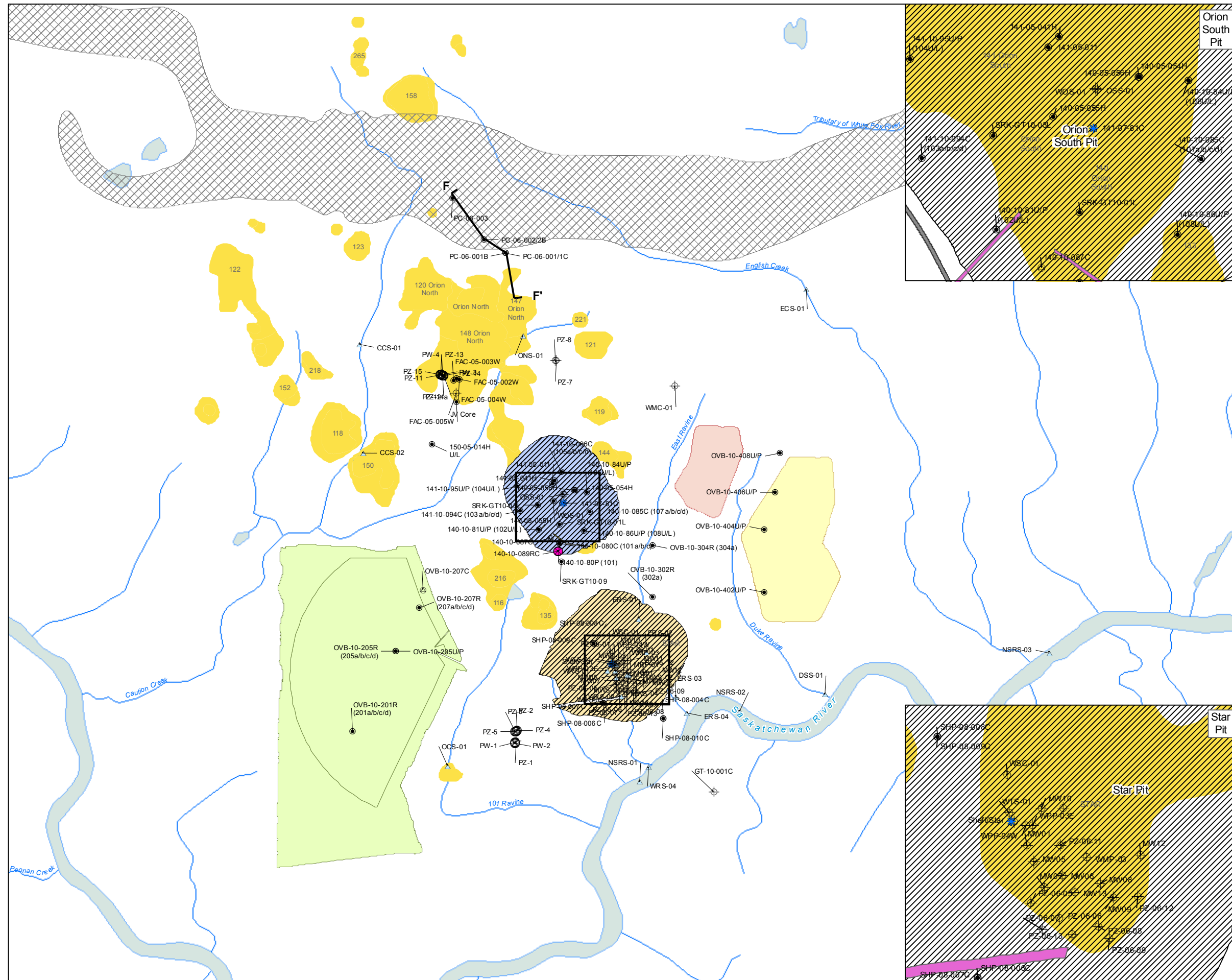


Reference

Base data: NTDB Tile 073H, 073A; NRN.
Mine facilities: Amec, dated 19 February 2009

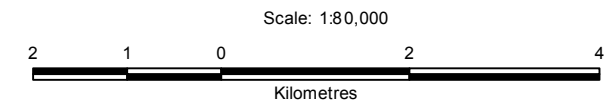
CLIENT: 		
PROJECT: Star - Orion South Diamond Project		
Cross Section B-B' North - South		
DATE: Dec 7, 2010	ANALYST: RM	Figure 5.2.7-5
JOB No: SX0373301	QA/QC: SG	PDF FILE: Figure 5.2.7-5 Cross Section B-B' North-South.pdf
GIS FILE: Figure 5.2.7-5 Cross Section B-B' North-South.mxd		
PROJECTION: UTM Zone 13	DATUM: NAD83	

I:\L713366\GIS_Work\ISX037330_02 - Shore Gold - MAPS\Hydro\Baseline\Figure 5.2.7.6 Monitoring Well and Test Well Infrastructure.mxd



Legend

- STAR-Orion Holes**
- Borehole
 - ⊙ Isotope Test Hole
 - ⊕ Monitoring Well
 - ⊗ Prototype Dewatering Well
 - ⊗ Pumping Well
 - ▲ Surface Water Station
 - ★ Test Shaft
 - Camp & Plant
 - ▬ Pipeline
 - ▬ Conveyor belt
 - Explosive Area
 - ▬ Access Roads (ROW)
 - ▬ Polishing & Runoff Ponds
 - Sewage Lagoon
 - Diffuser
 - ▨ Star & Orion South Pits
 - Overburden Piles
 - Coarse PK
 - PKCF
 - ▬ Cross Section Locations (Clifton, 2008)
 - ▨ Paleochannel
 - Kimberlite occurrences
 - ▬ Watercourse
 - Waterbody



Reference

Base data: NTDB Tile 073H, 073A; NRN.
 Mine facilities: Amec, dated 19 February 2009

CLIENT: 		
PROJECT: Star - Orion South Diamond Project		
Monitoring Well and Test Well Infrastructure		
DATE: Dec 22, 2011	ANALYST: RM	Figure 5.2.7-6
JOB No: SX0373301	QA/QC: SG	PD F F I L E: Figure 5.2.7-6 Monitoring Well and Test Well Infrastructure.pdf
GIS FILE: Figure 5.2.7-6 Monitoring Well and Test Well Infrastructure.mxd		
PROJECTION: UTM Zone 13	DATUM: NAD83	

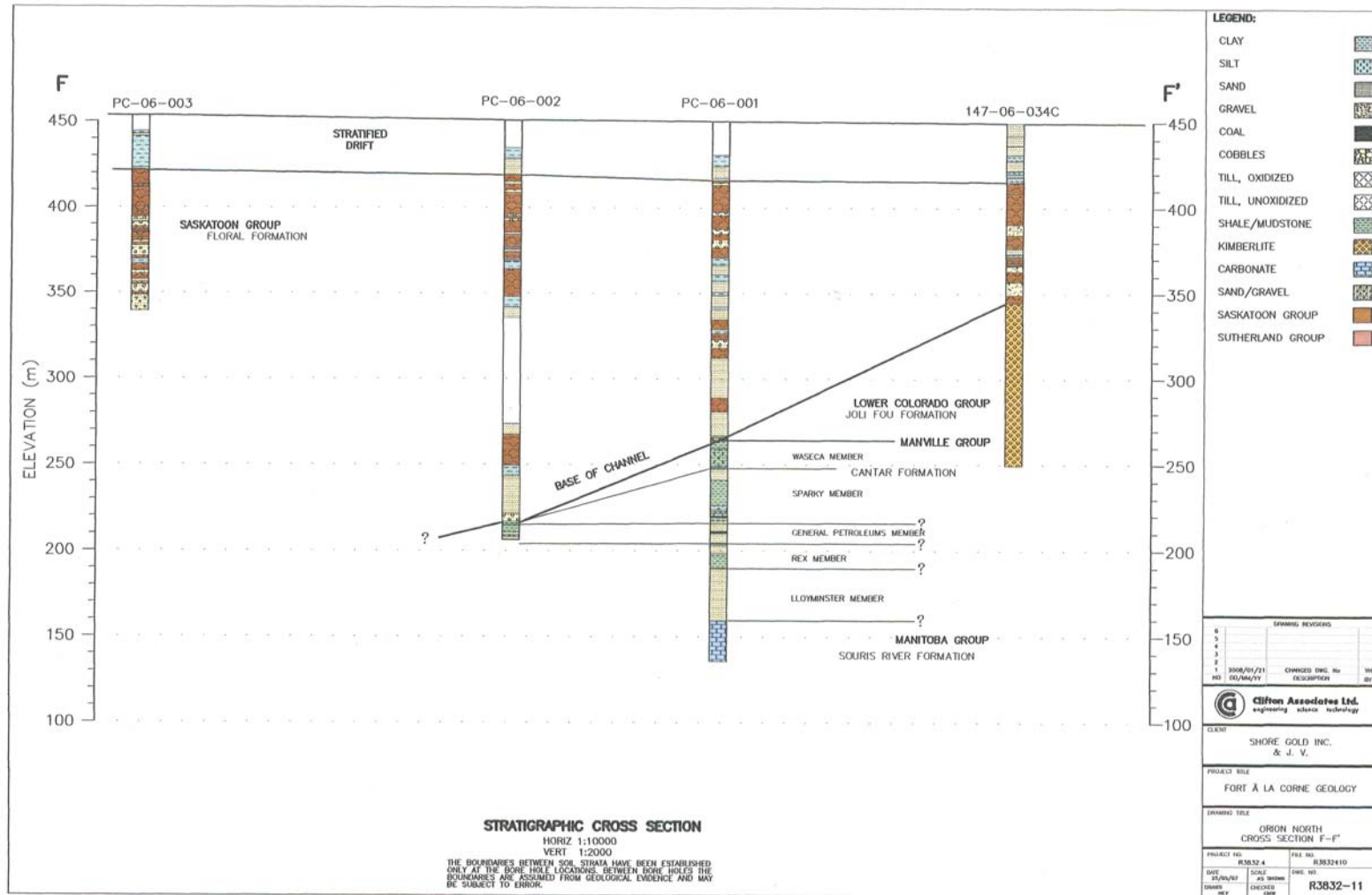
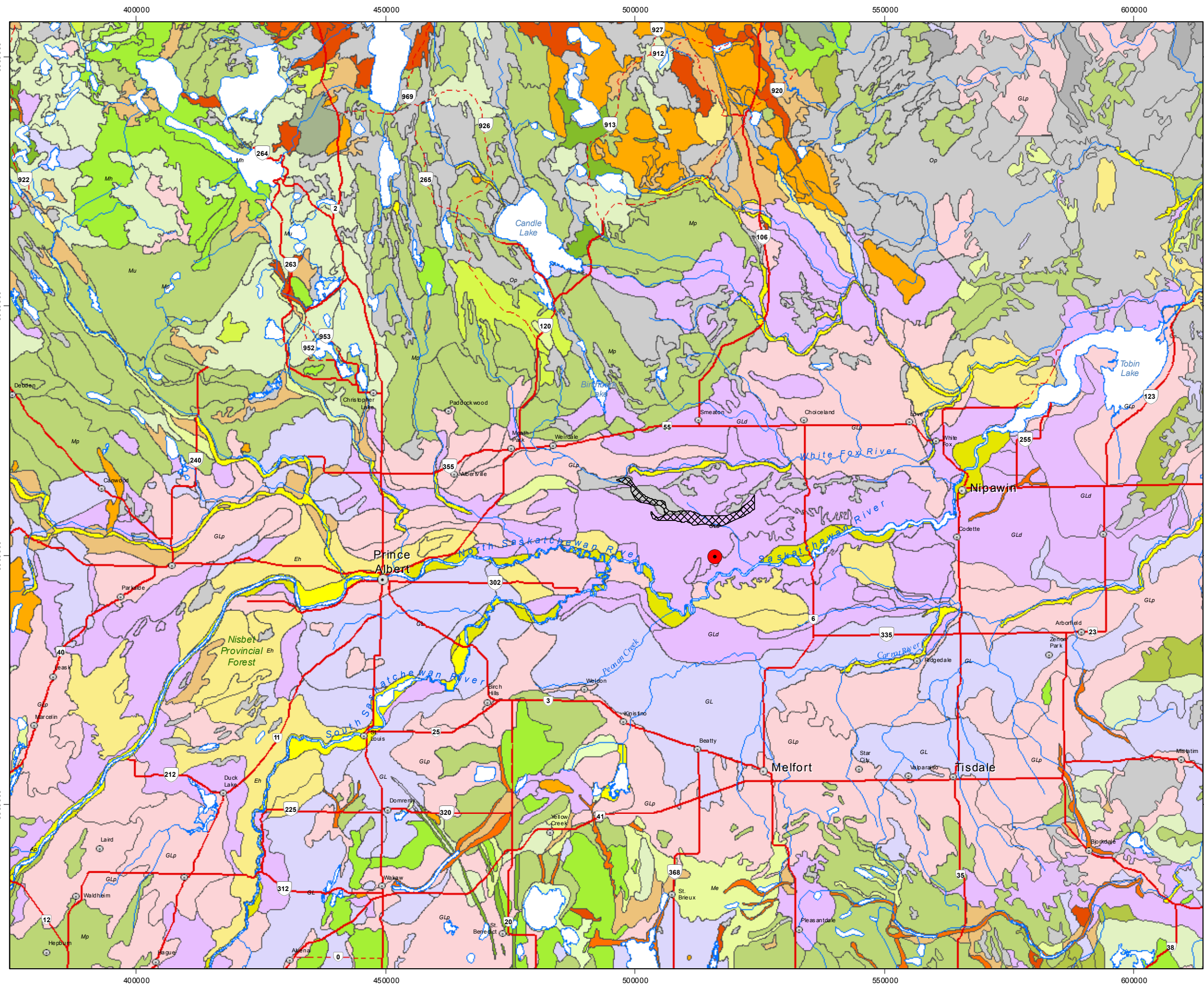


Figure 5.2.7-7: Stratigraphic Cross Section

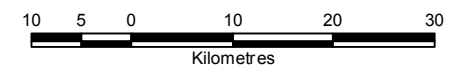
I:\G713265\GIS_Work\GIS\037333_02 - Shore Gold - MAPS\HydroG Baseline\Figure 5.2.7-8 Surficial Geology.mxd



Legend

- Project Location
- Rural Towns
- Highway, Paved
- - - Highway, Un paved
- Watercourse
- ▭ Waterbody
- ▭ Paleochannel
- Alluvial Deposits**
- ▭ A: Alluvial deposits
- ▭ Ap: Alluvial plain
- Bedrock**
- ▭ R: Rock
- Colluvial Deposits**
- ▭ C: Colluvial deposits
- Eolian Deposits**
- ▭ E: Eolian deposits
- ▭ Eh: Eolian hummocky
- ▭ Ep: Eolian plain
- ▭ Er: Eolian ridged
- Glacial Deposits**
- ▭ M: Morainal
- ▭ Md: Moraine durinoid
- ▭ Me: Moraine eroded
- ▭ Mh: Moraine hummocky
- ▭ Mp: Moraine plain
- ▭ Mr: Moraine ridged
- ▭ Mu: Moraine undulating
- ▭ Mv: Moraine veneer
- Glaciofluvial and Fluvial Deposits**
- ▭ GF: Glaciofluvial deposits
- ▭ GFe: Glaciofluvial eroded
- ▭ GFh: Glaciofluvial hummocky
- ▭ GFp: Glaciofluvial plain
- ▭ GFT: Glaciofluvial terrace
- Glaciolacustrine Deposits**
- ▭ GL: Glaciolacustrine deposits
- ▭ GLd: Glaciolacustrine delta
- ▭ GLp: Glaciolacustrine plain
- ▭ L: Lacustrine deposits
- Organic Deposits**
- ▭ O: Organic deposits
- ▭ Op: Organic plain

Scale: 1:750,000



Reference

Base data: NTDB Tile 073H, 073A; NRN.
 Mine facilities: Amec, dated 19 February 2009

CLIENT: 		
PROJECT: Star - Orion South Diamond Project		
Surficial Geology		
DATE: Dec 22, 2011	ANALYST: RM	Figure 5.2.7-8
JOB No: SX0373301	QA/QC: SG	PDF FILE: Figure 5.2.7-8 Surficial Geology.pdf
GIS FILE: Figure 5.2.7-8 Surficial Geology.mxd		
PROJECTION: UTM Zone 13	DATUM: NAD83	