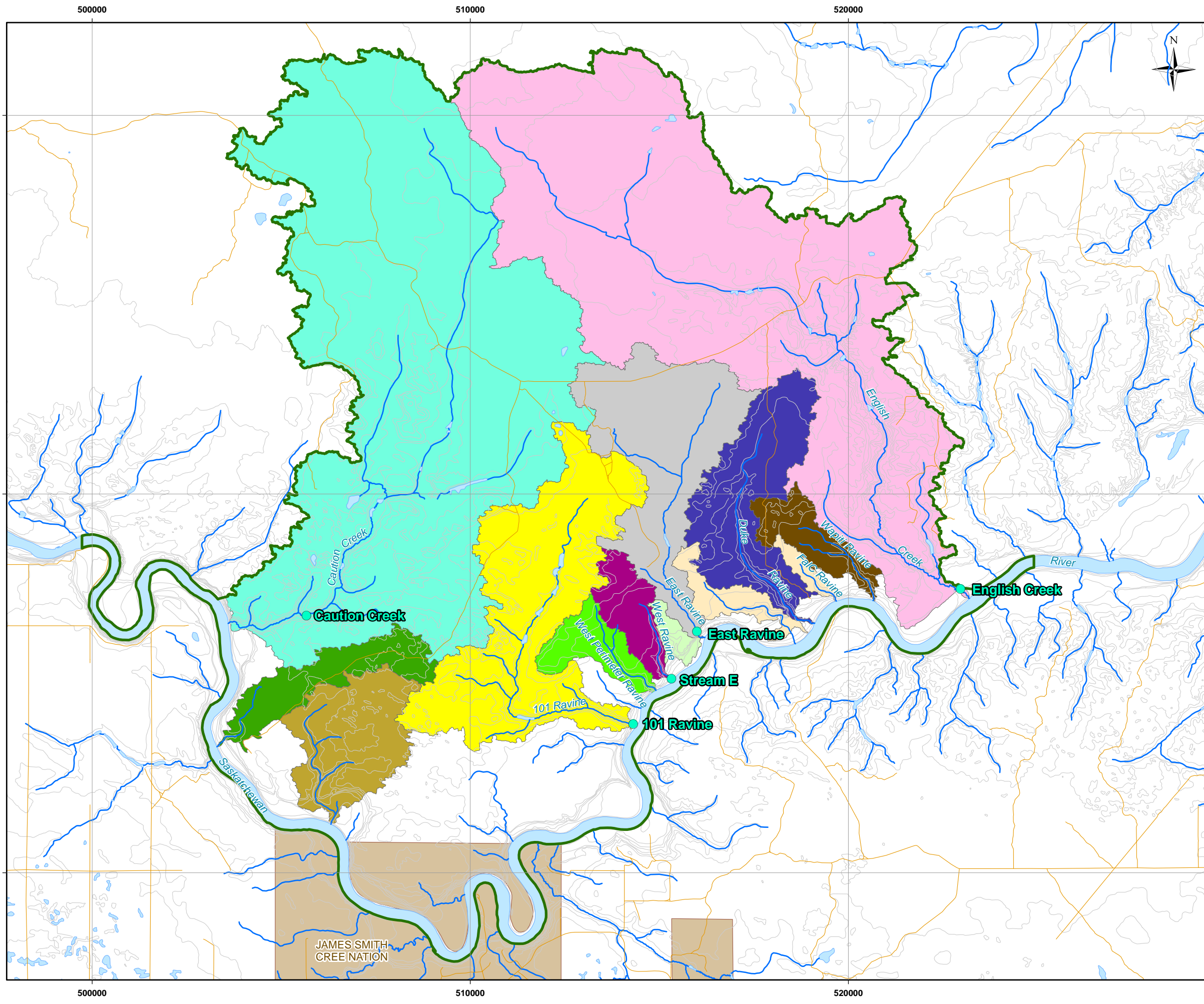
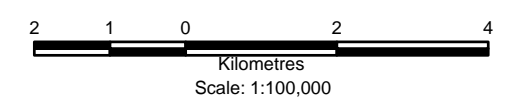


S:\GIS\Projects\SA\Shore_Gold\ArcGIS\Projects\Water_Quality\Fig Baseline Basins & Stations.mxd

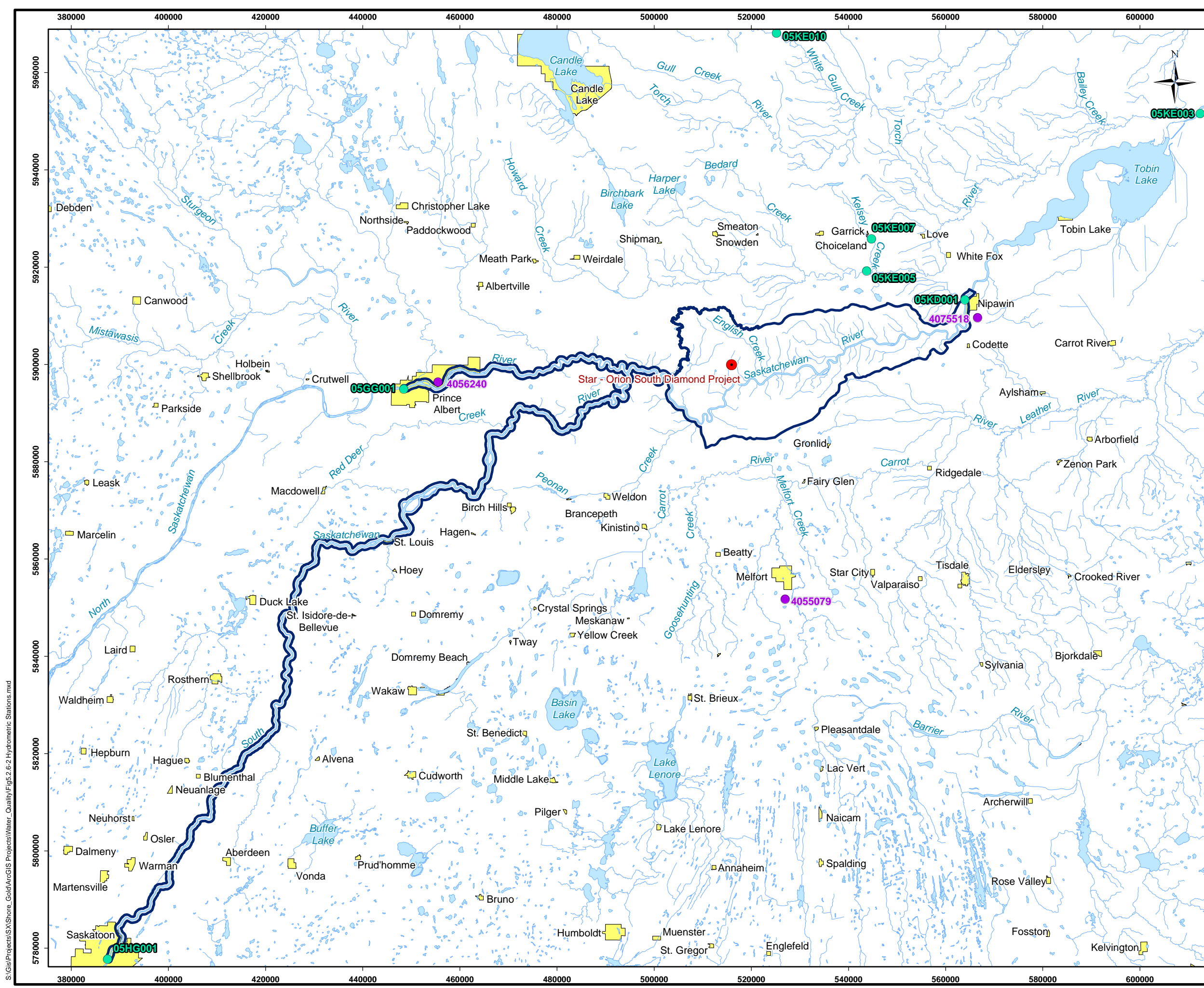


- Legend**
- Streamflow Monitoring Station
 - Watercourse
 - Road
 - Elevation Contour (10 m)
 - Waterbody
 - Local Study Area
 - First Nations Reserve
- Watersheds**
- Caution Creek Watershed
 - Caution Creek East Watershed
 - Caution Creek South Watershed
 - 101 Ravine Watershed
 - West Perimeter Ravine Watershed
 - West Ravine Watershed
 - Central-East Ravine Watershed
 - East Ravine Watershed
 - Duke Ravine West Watershed
 - Duke Ravine Watershed
 - FaLC Ravine Watershed
 - Wapiti Ravine Watershed
 - English Creek Watershed

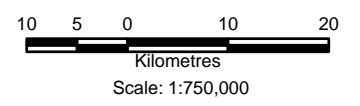


Reference
 Base data: NRCan National Road Network
 NTS 1:50,000 scale: GeoSask
 Indian Reserve/Municipality Boundaries: GeoSask

CLIENT: 		
PROJECT: Star - Orion South Diamond Project		
Tributary Basins and Streamflow Monitoring Stations in the Hydrology Local Study Area		
DATE: December 2010	ANALYST: NH	Figure 5.2.6-1
JOB No: SX0373302	QA/QC: GB	PDF FILE: Fig Baseline Basins & Stations 10-12-10.pdf
GIS FILE: Fig Baseline Basins & Stations.mxd		
PROJECTION: UTM Zone 13	DATUM: NAD27	





- Legend**
- Project Location
 - Meteorological Station
 - WSC Station
 - Watercourse
 - Waterbody
 - Population Centre
 - Regional Study Area



Reference

Base data: NRCan National Road Network
 NTS 1:50,000 scale: GeoSask

		
PROJECT: Star - Orion South Diamond Project		
Hydrometric Stations Within Hydrology Regional Study Area Vicinity		
DATE: November 2010	ANALYST: NH	Figure 5.2.6-2
JOB No: SX0373302	QA/QC: GB	PDF FILE: Fig5.2.6-2 Hydrometric Stations 10-12-08.pdf
GIS FILE: Fig5.2.6-2 Hydrometric Stations.mxd		
PROJECTION: UTM Zone 13	DATUM: NAD27	

S:\GIS\Projects\S\Shore_Gold\GIS\Projects\Water_Quality\Fig5.2.6-2_Hydrometric_Stations.mxd

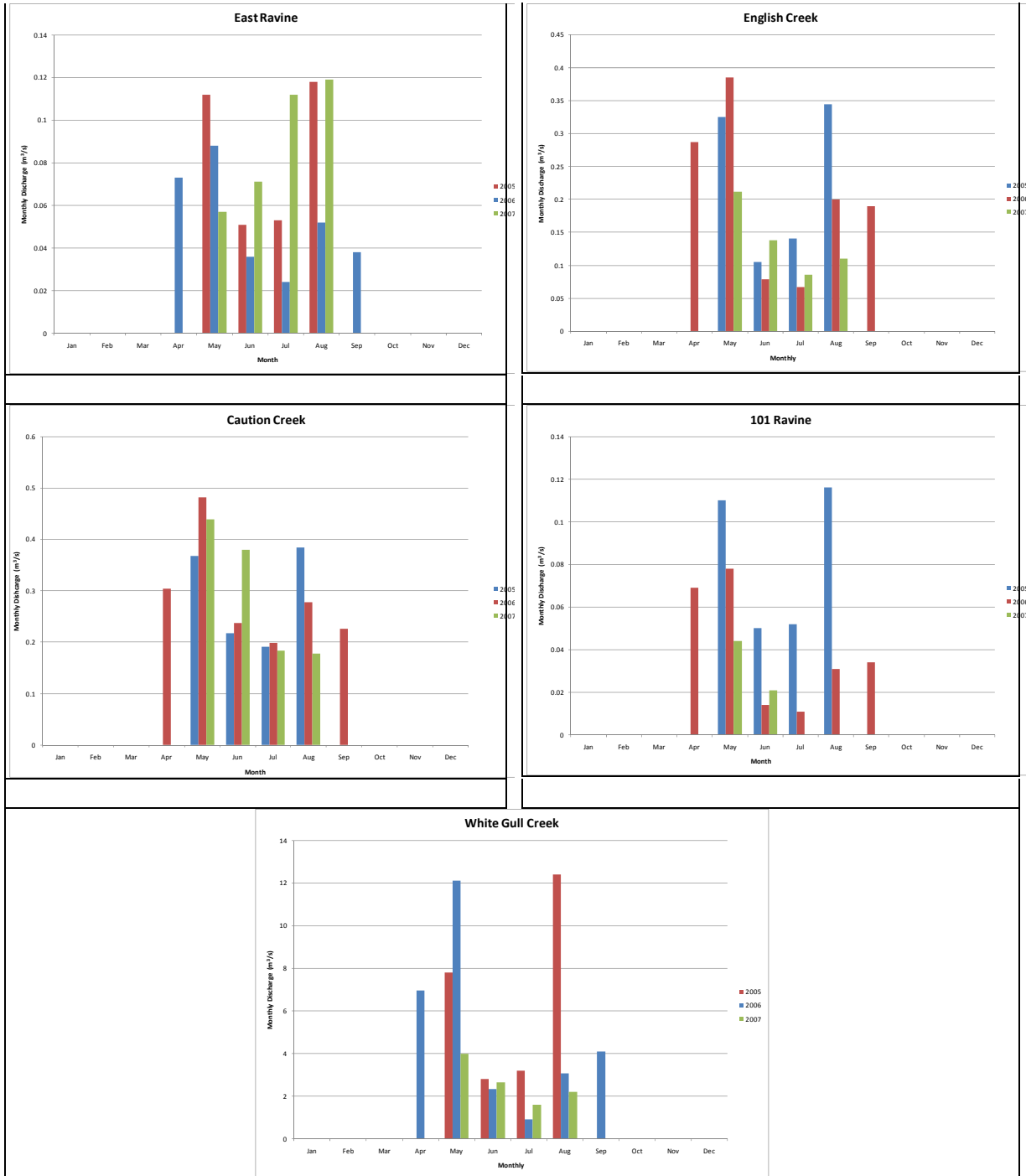
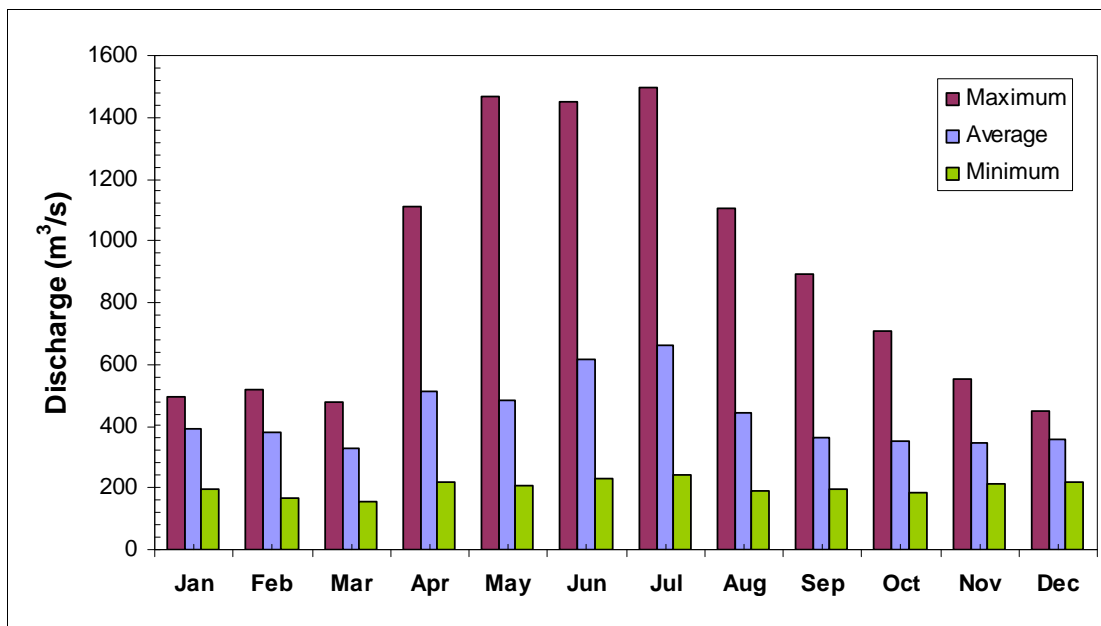
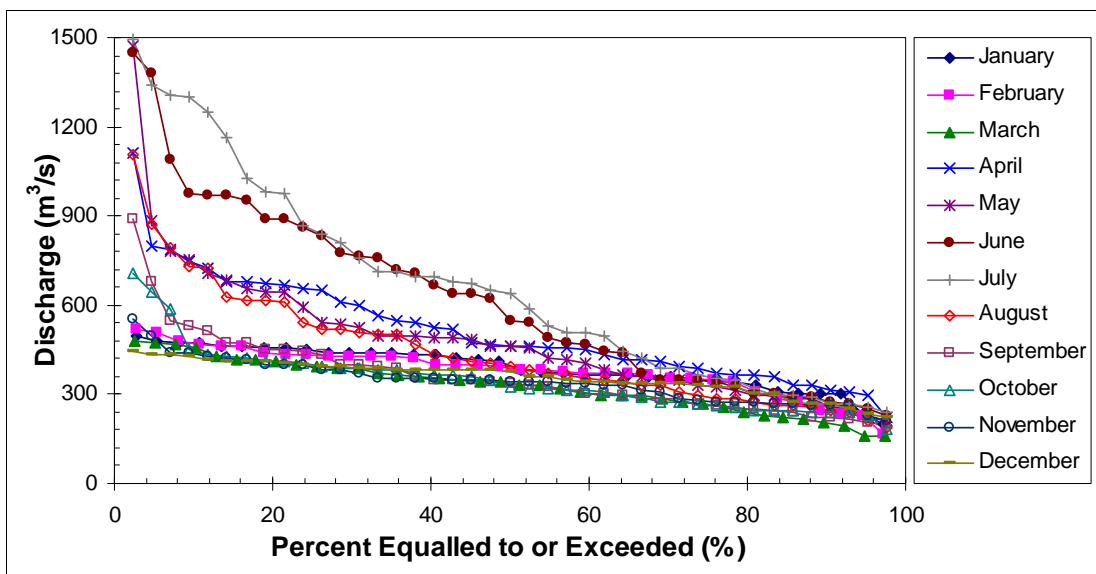


Figure 5.2.6-3: Representative Stream Hydrographs



Note: Based on Data from the North Saskatchewan River at Prince Albert (05GG001) and the South Saskatchewan River at Saskatoon (05HG001), 1969–2009.

Figure 5.2.6-4: Mean Monthly Flows for the Project Area



Note: Based on Data from the North Saskatchewan River at Prince Albert (05GG001) and the South Saskatchewan River at Saskatoon (05HG001), 1969–1986; 1992–2009.

Figure 5.2.6-5: Monthly Flow Duration Curves for the Project Area

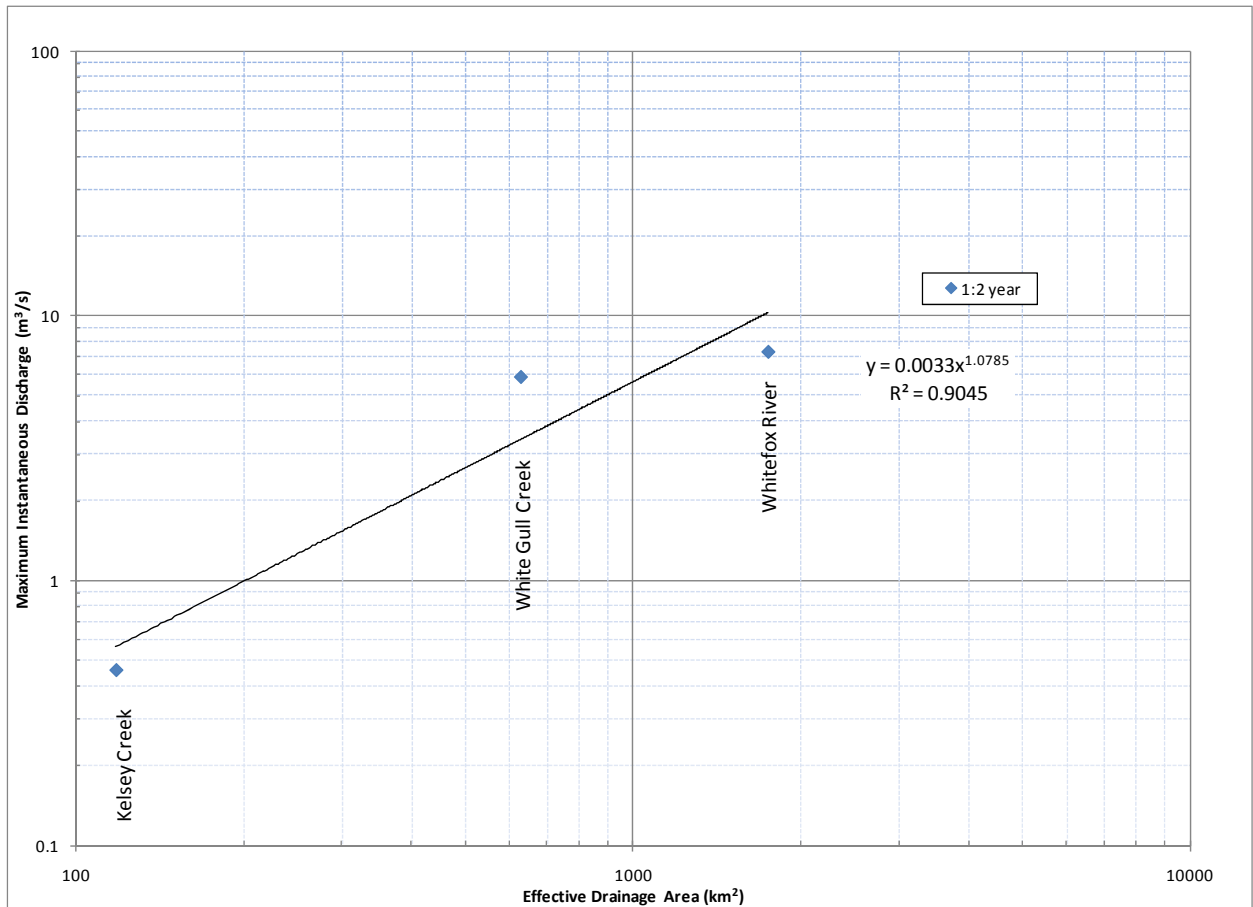


Figure 5.2.6-6: Regional Flood Frequency Curve for the 1:2 year Flood

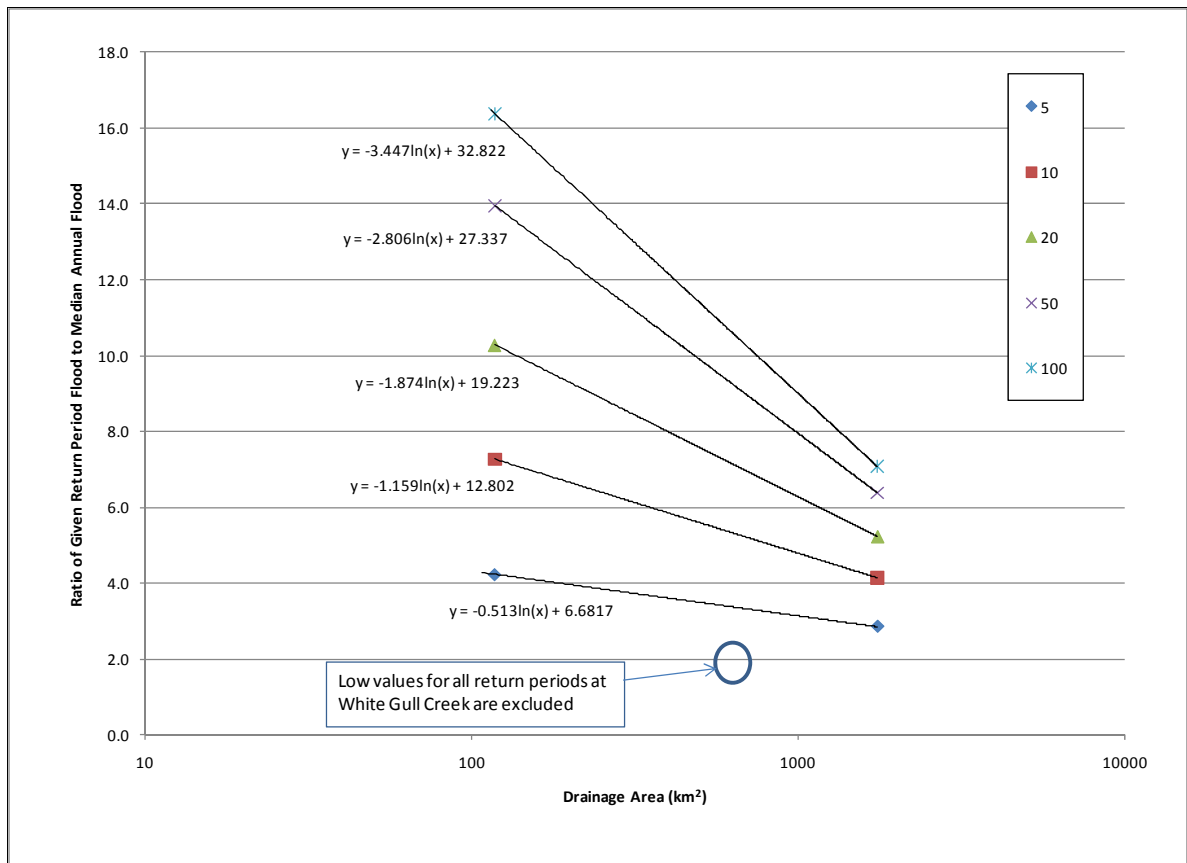


Figure 5.2.6-7: Ratio of Given Return Period Flood to Median Annual Flood