



**Legend**

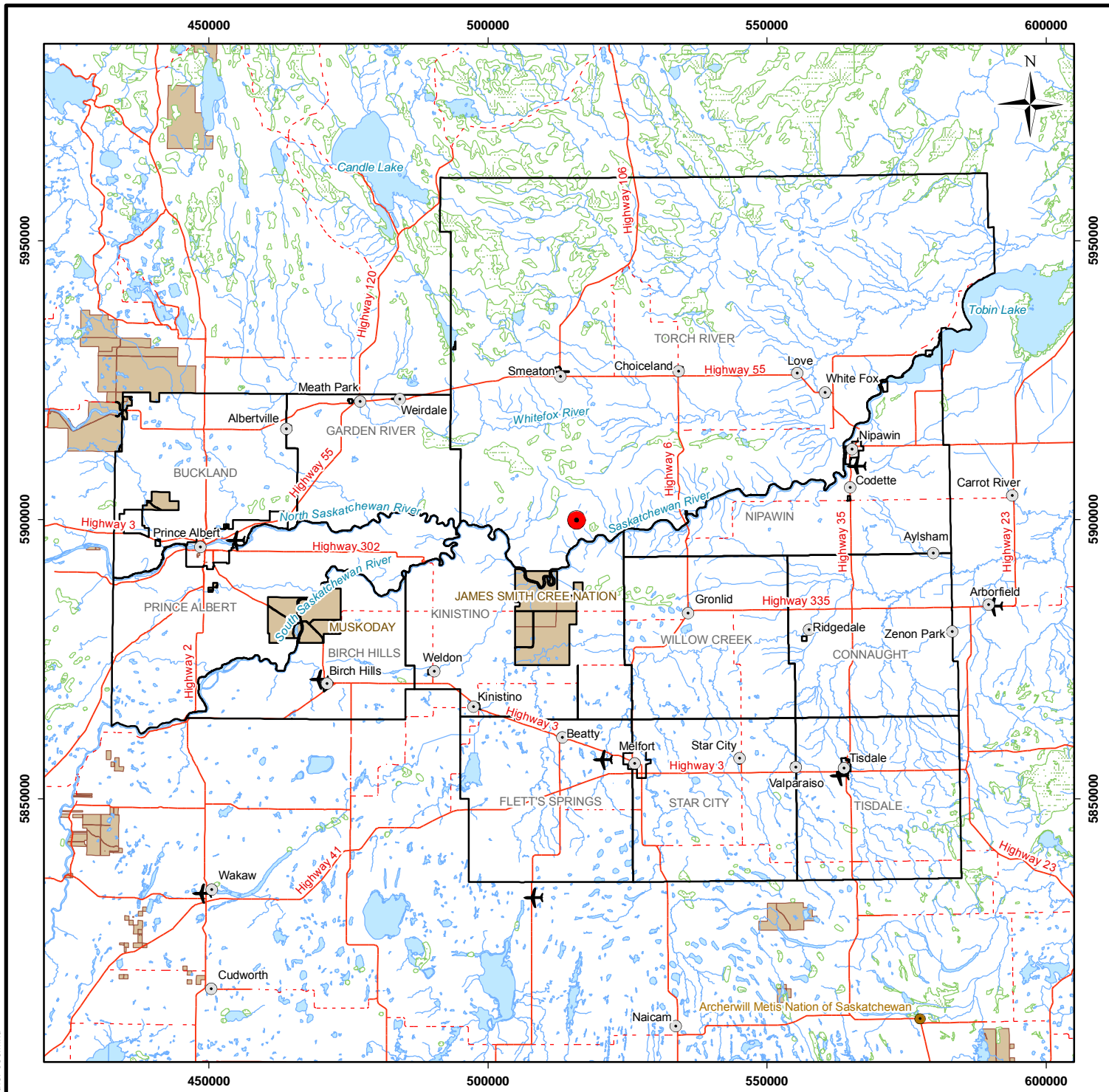
- Contour (10 m)
- Watercourse
- Wetland
- Waterbody
- Indian Reserve
- Mine Facilities

**Reference**

Base data: NTS 1:50,000 scale  
 Orthophoto Date 2007 & 2009  
 Mine facilities: Dated August 30, 2011

CLIENT:			
PROJECT:		Star - Orion South Diamond Project	
<h2>Project Components</h2>			
		<b>Figure 2.1-1</b> DATE: June, 2012	
GIS TRACKING NUMBER: X-Other-025_v10	PROJECT No: SX0373302		
PROJECTION & DATUM: UTM Zone 13 NAD27	DRAWN BY: EO		



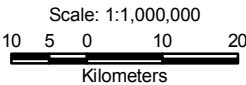


**Legend**

- Project Location
- ~ Watercourse
- ◐ Waterbody
- ⊙ Regional Study Area Communities
- ▨ Wetland
- Metis Nation
- Rural Municipality
- Paved Highway
- - - Unpaved Highway
- Indian Reserve

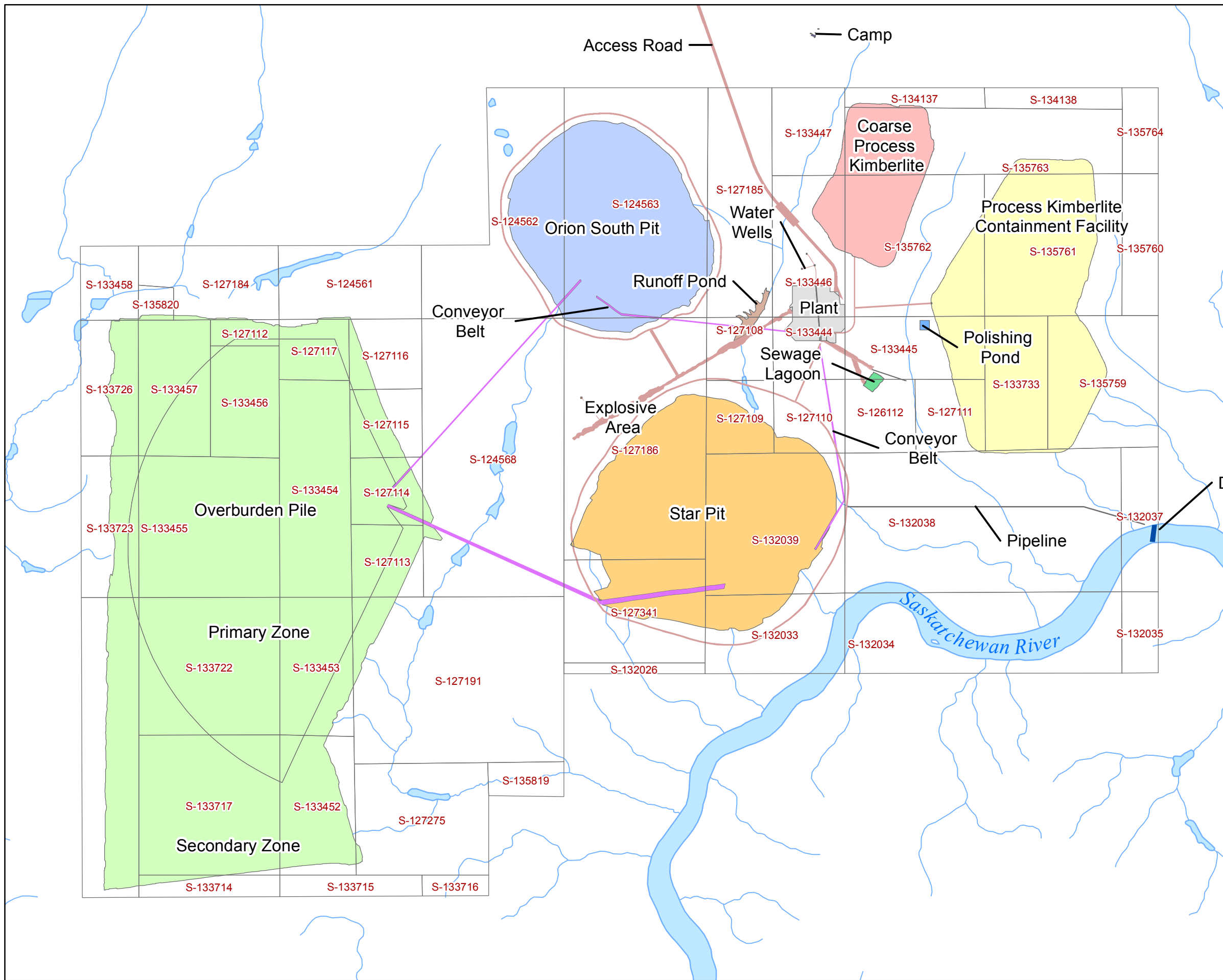
**Reference**

Base data: NRCan National Road Network;  
 NTS 1:250,000 scale: GeoSask  
 Indian Reserve/ Municipality Boundaries: GeoSask  
 Mine facilities: Amec, dated 19 February 2009



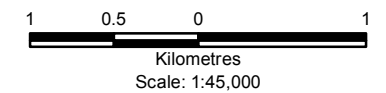
CLIENT: <div style="text-align: center;"></div>		
PROJECT: <div style="text-align: center;">Star - Orion South Diamond Project</div>		
<h2>Project Location</h2>		
DATE: November 15, 2010	ANALYST: EO	<b>Figure 2.4-1</b>
JOB No: SX03733	QA/QC: EO	
GIS FILE: X-Other-036.mxd		
PROJECTION: UTM Zone 13	DATUM: NAD27	



Y:\GIS\Projects\SX\SX03733\_Shore-Gold\_Diamond\_1\Maping\19\_Other\Baseline\X-Other-034\_v3.mxd

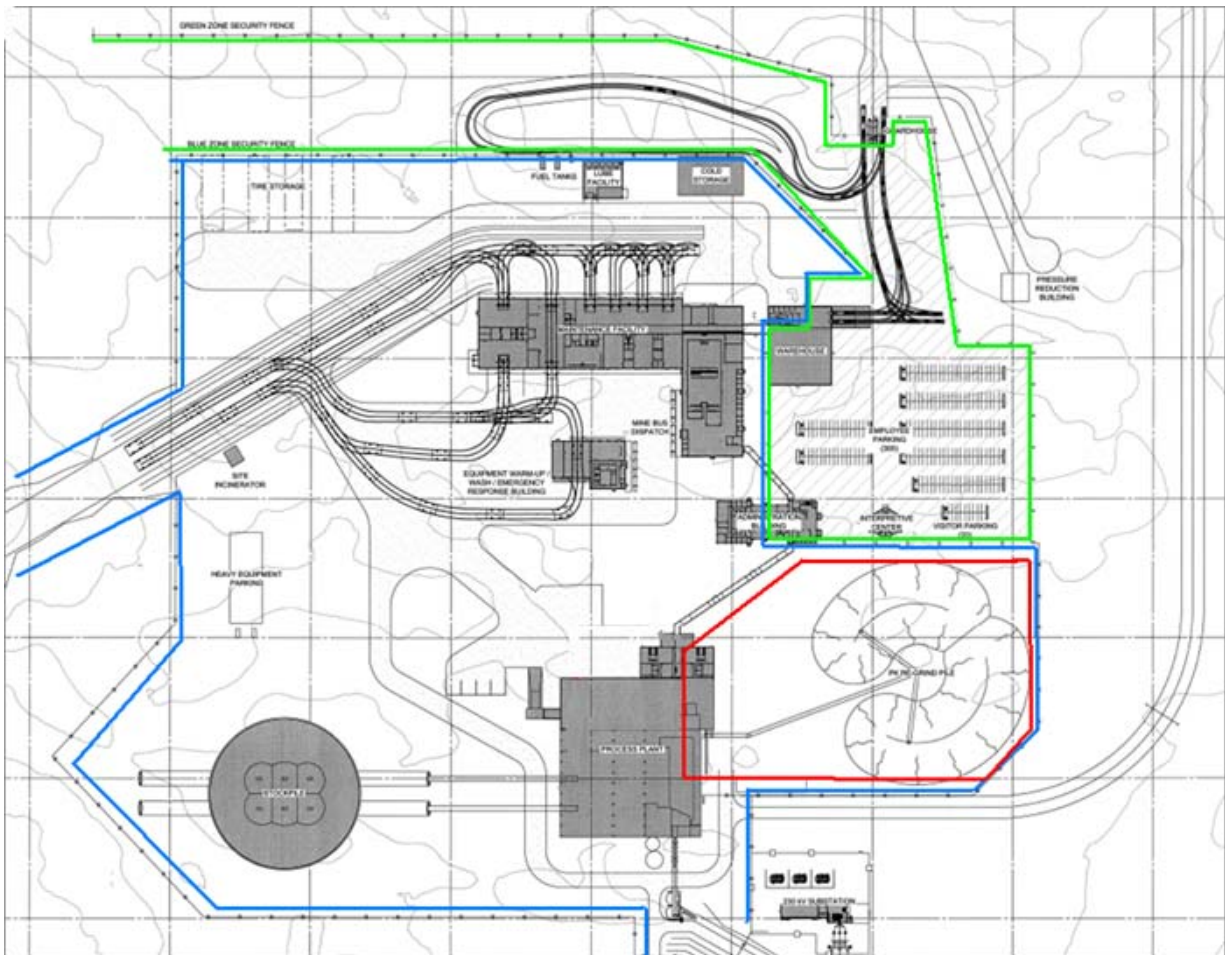


**Legend**

- Lease Boundary
- Watercourse
- Waterbody

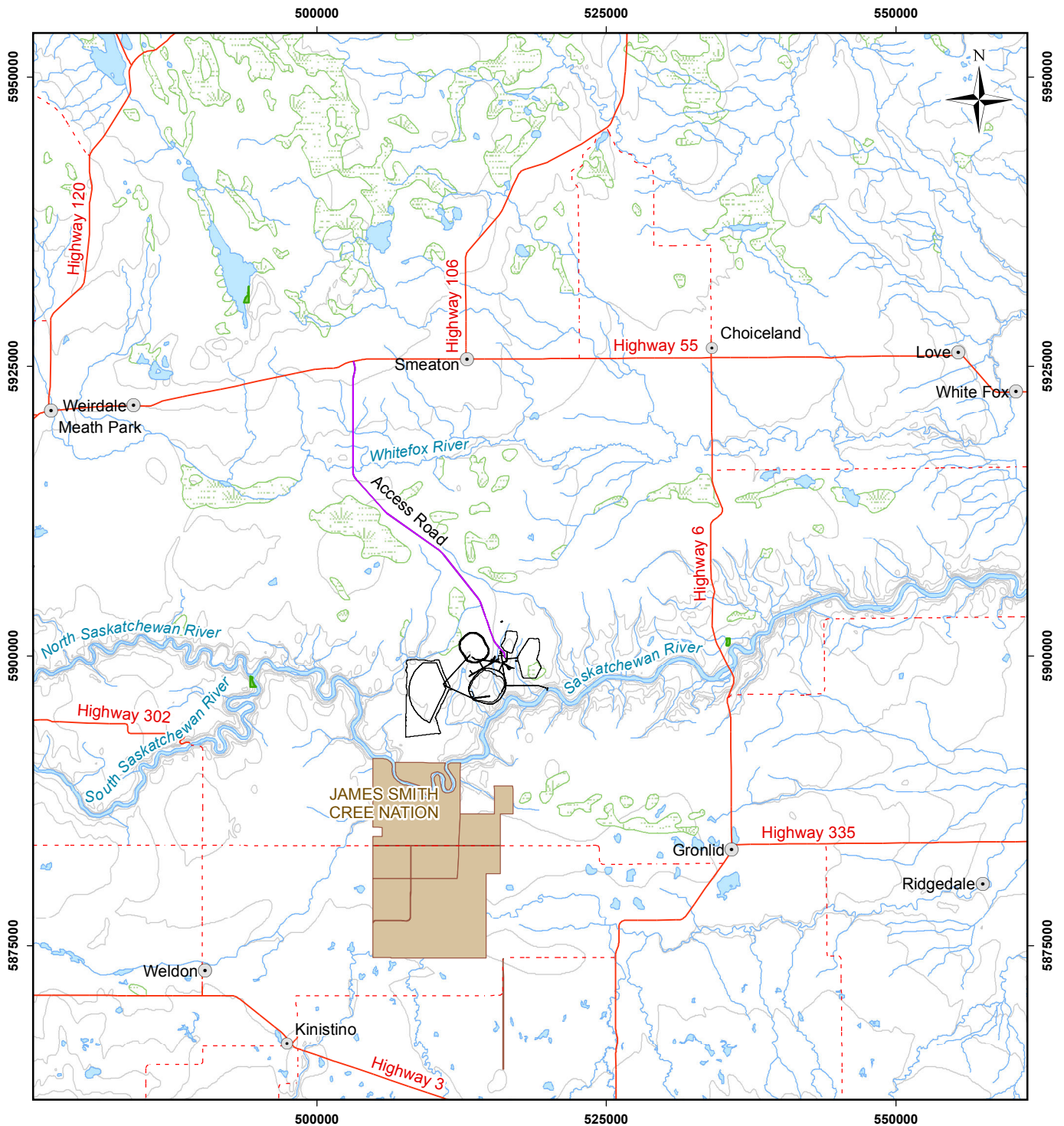


		
<b>PROJECT:</b> Star - Orion South Diamond Project		
<b>Mineral Dispositions and the Proposed Surface Leases Area for the Project</b>		
<b>DATE:</b> July, 2012	<b>ANALYST:</b> EO	<b>Figure</b>
<b>JOB No:</b> SX0373301	<b>QA/QC:</b> KM	<b>PDF FILE:</b> X-Other-034_v3_MDisposition.pdf
<b>GIS FILE:</b> X-Other-034_v3.mxd		
<b>PROJECTION:</b> UTM Zone 13	<b>DATUM:</b> NAD27	



**Figure 2.5-1: Location of Plant Site Facilities**








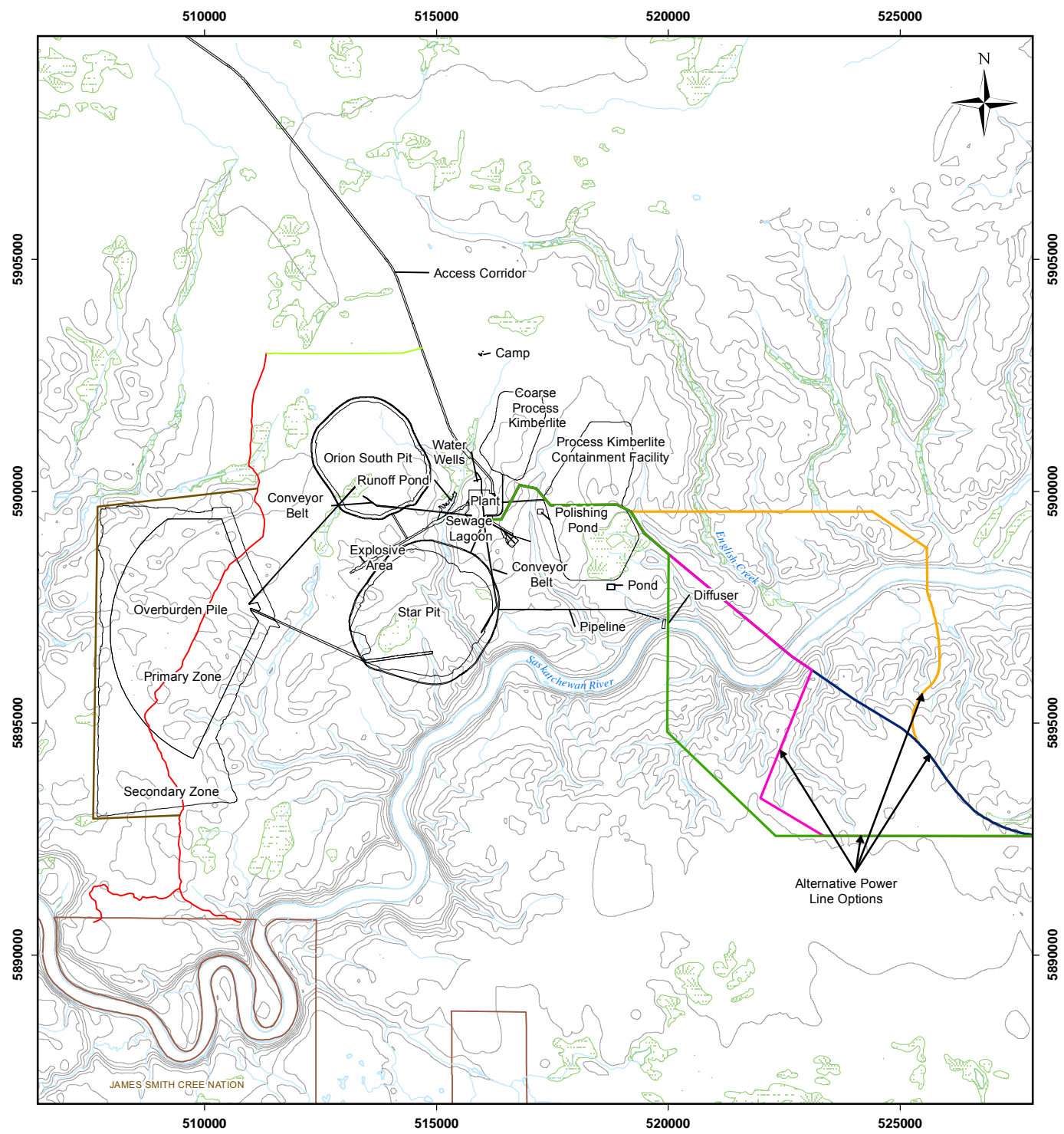
**Legend**

- Paved Highway
- - - Unpaved Highway
- Elevation Contour (20 m)
- Watercourse
- Waterbody
- Wetland
- Indian Reserve
- Park or Protected Area
- Mine Facilities
- Access Road

**Reference**

Base data: NRCan National Road Network; NTS 1:250,000 scale; GeoSask  
 Mine facilities: AMEC, dated 16 September 2008

CLIENT: 	
PROJECT: Star - Orion South Diamond Project	
Access Corridor Alignment	
0    5    10    15 km 	<b>Figure 2.5-2</b> DATE: June, 2012
GIS TRACKING NUMBER: X-Other-039_v2	PROJECT No: SX03733
PROJECTION & DATUM: UTM Zone 13 NAD27	DRAWN BY: EO
	



**Legend**

- Contour (10 m)
- Watercourse
- Division Road
- Lars Road Re-route
- Lars Road
- Wetland
- Waterbody
- Indian Reserve
- Mine Facilities
- Powerline Options:
  - Blue Route
  - Magenta Route
  - Orange Route
  - Green Route

**Reference**

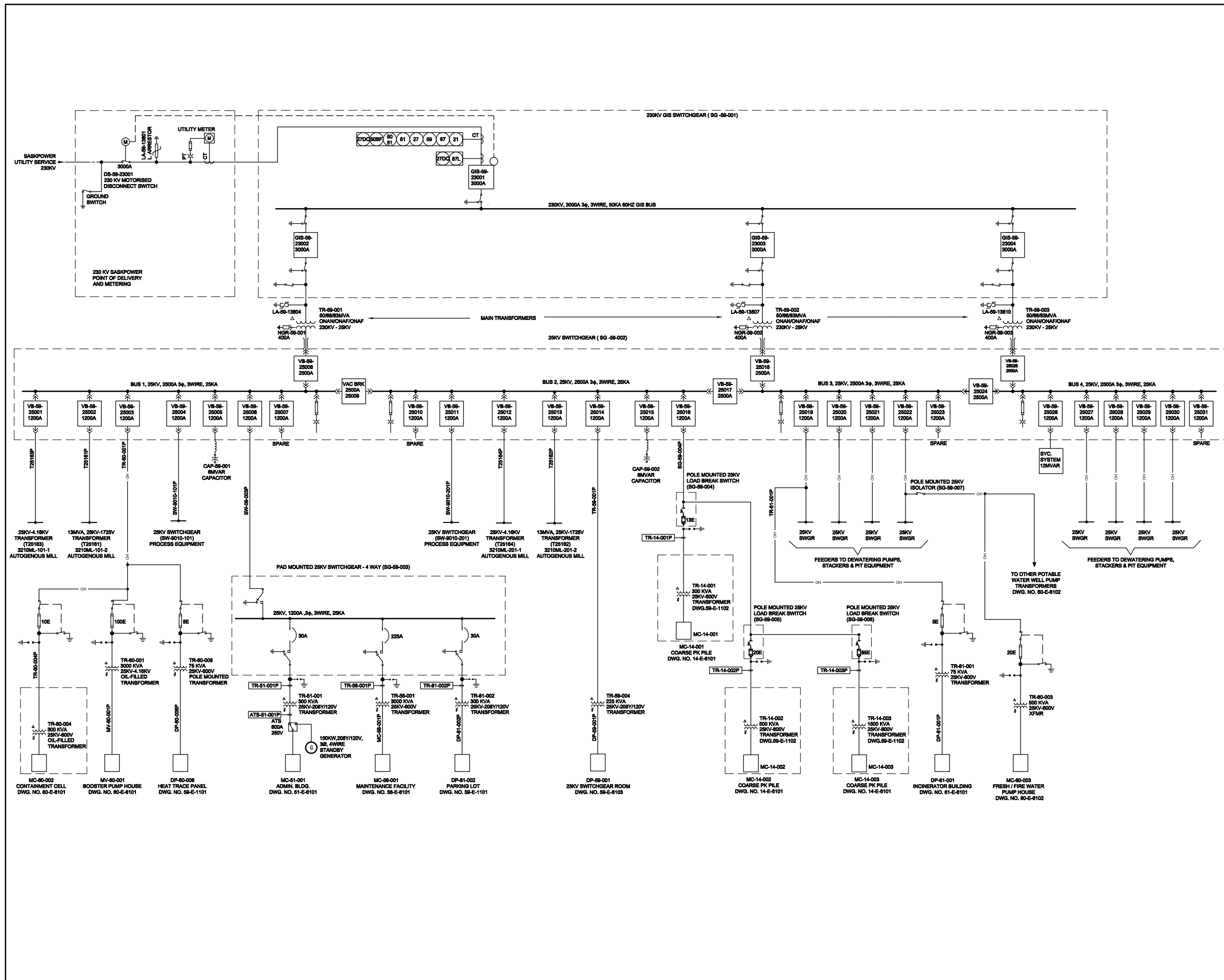
Base data: NTS 1:50,000 scale  
 Orthophoto Date 2007 & 2009  
 Mine facilities: Dated June 15, 2010  
 SaskPower preliminary Project Description: Dated November 2010

CLIENT:			
PROJECT:		Star - Orion South Diamond Project	
<b>Production Powerline and Electrical Supply Options</b>			
0                      2                      4 km		<b>Figure 2.5-3</b>	
		DATE: July, 2012	
GIS TRACKING NUMBER: X-Other-043_v2	PROJECT No: SX0373302		
PROJECTION & DATUM: UTM Zone 13 NAD27	DRAWN BY: EO		

Y:\GIS\Projects\SX\SX03733\_Shore-Gold\_Diamond\_1\Mapping\19\_Other\BaselineX-Other-043\_v2.mxd



Y:\GIS\Projects\SX\SX03733\_ShoreGold\_Diamond\_1\mapping\19\_Other\BaselineX-Other-040.mxd



LEGEND:  
 — OH — OVERHEAD TRANSMISSION LINES  
 ——— 25KV BUSWAY

Reference  
 AECOM

CLIENT: 		
PROJECT: Star - Orion South Diamond Project		
<b>Electrical System Schematic</b>		
DATE: November 23, 2010	ANALYST: EO	<b>Figure 2.5-4</b>
JOB No: SX0373301	QA/QC: KM	PDF FILE: X-Other-040_electric_line.pdf
GIS FILE: X-Other-040.mxd		
PROJECTION:	DATUM:	

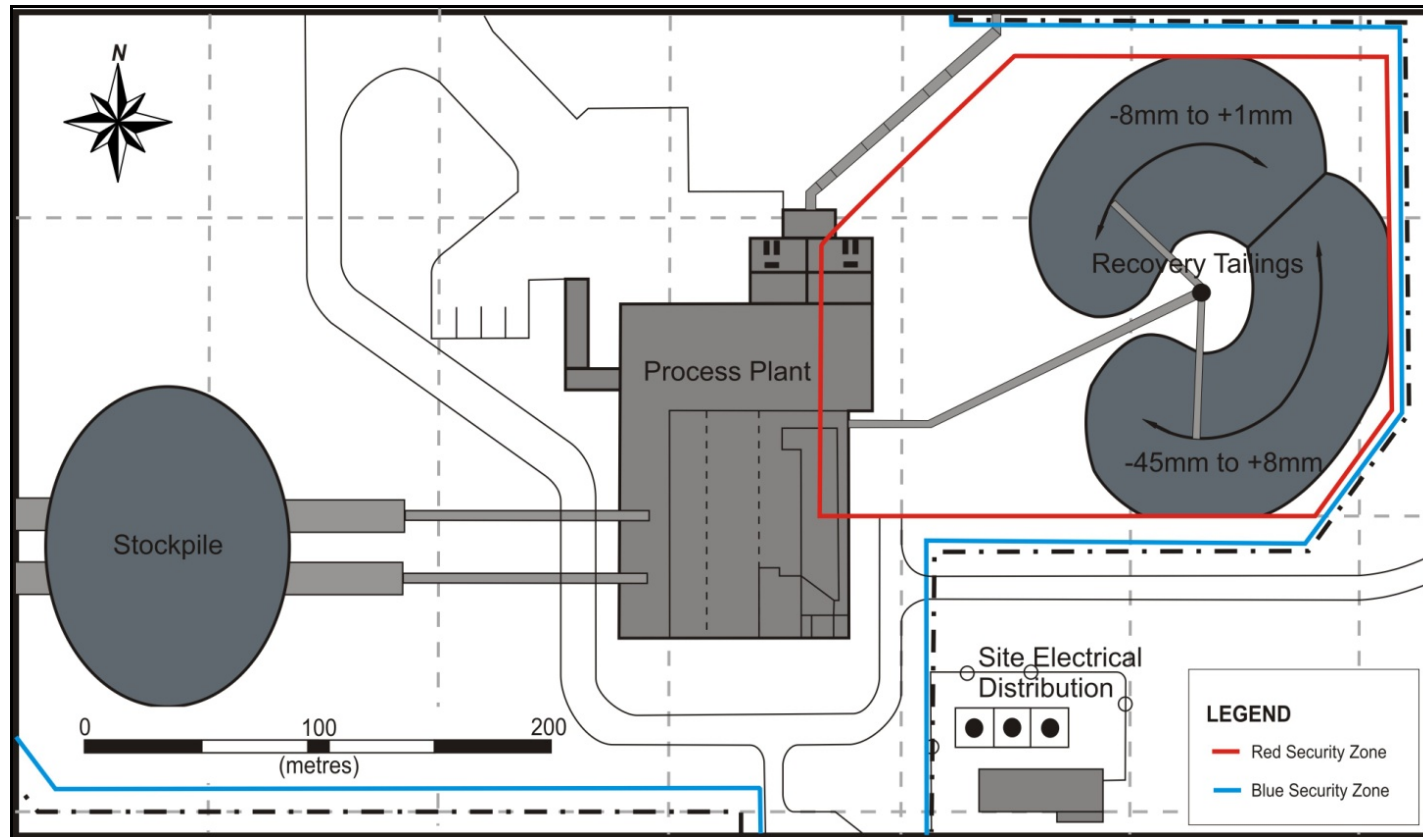


Figure 2.5-5: Proposed Layout of the Process Plant, Stockpile and Recovery Tailings Stockpile



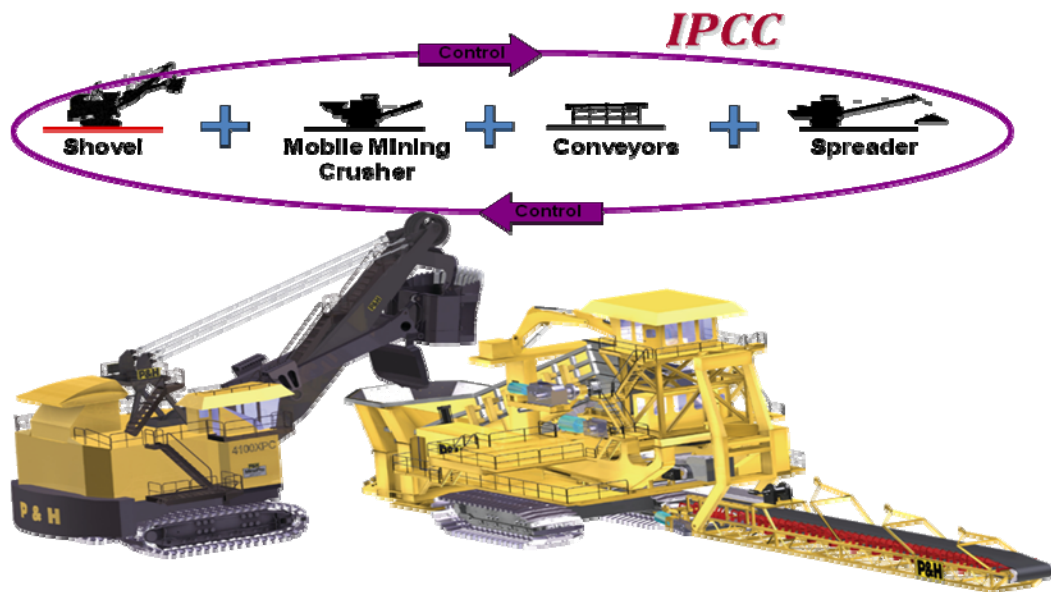
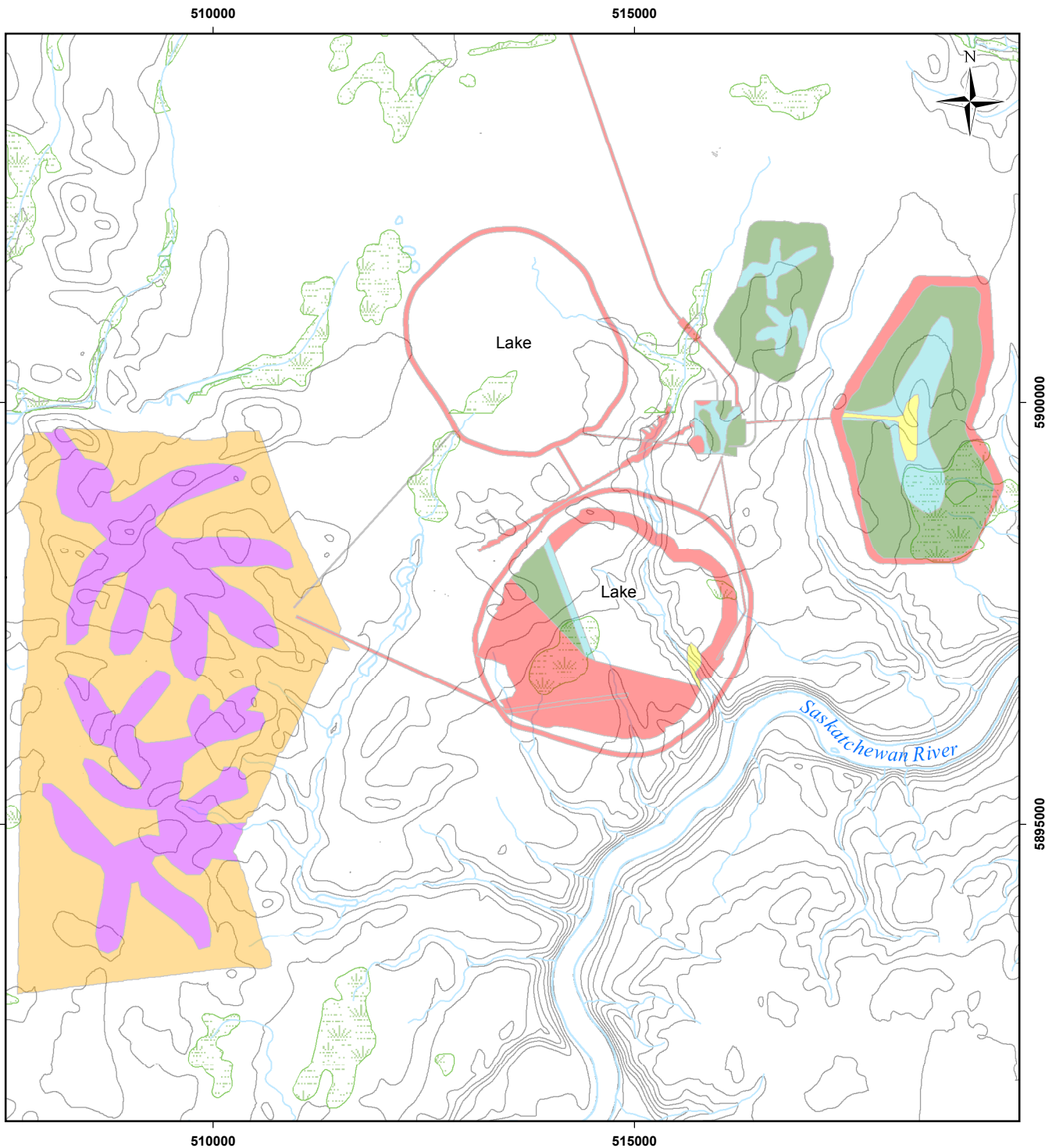


Figure 2.6-1: In Pit Crush and Convey System



**Legend**

- |                   |   |
|-------------------|---|
| — Contour (10 m)  | Moisture-Nutrient Classification:         |
| — Watercourse     | ■ Dry-Moderate                            |
| ■ Wetland         | ■ Dry-Poor                                |
| — Waterbody       | ■ Moist-Moderate                          |
| □ Mine Facilities | ■ 85% Dry-Moderate and 15% Moist-Moderate |
|                   | ■ Moist-Poor                              |
|                   | ■ Wet-Moderate                            |

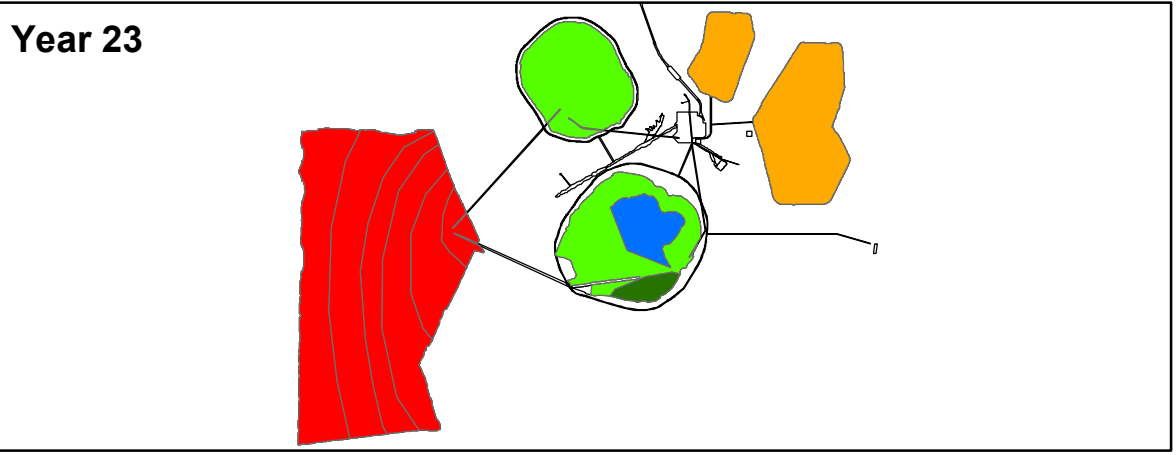
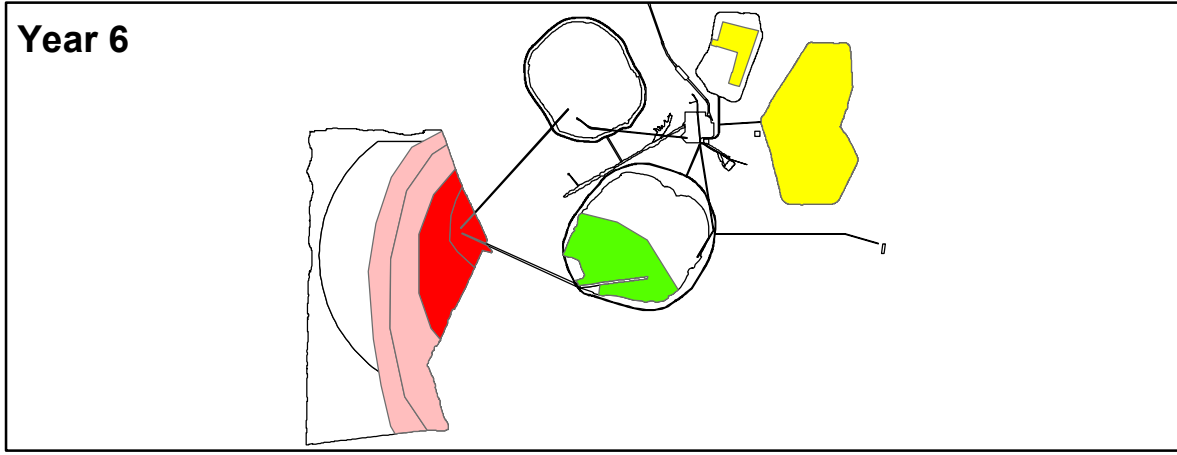
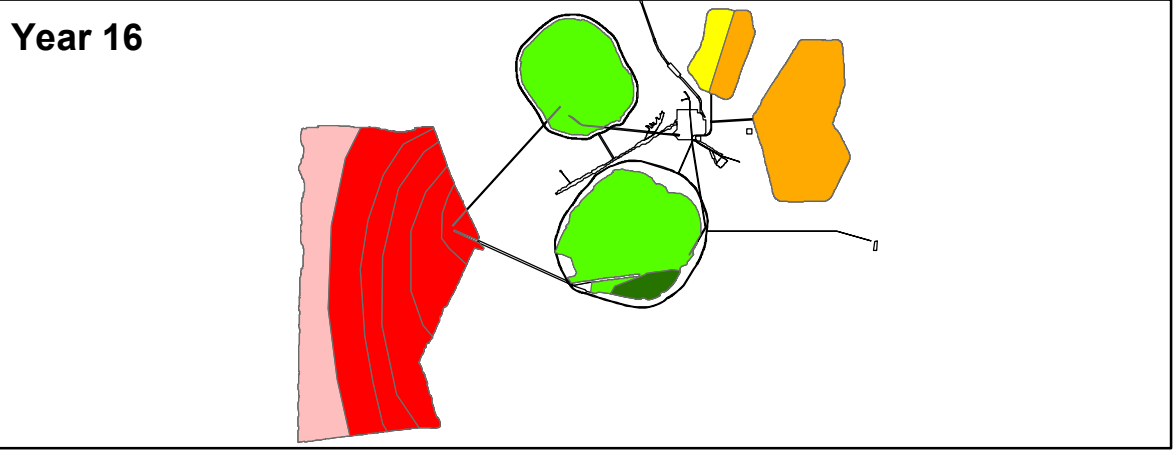
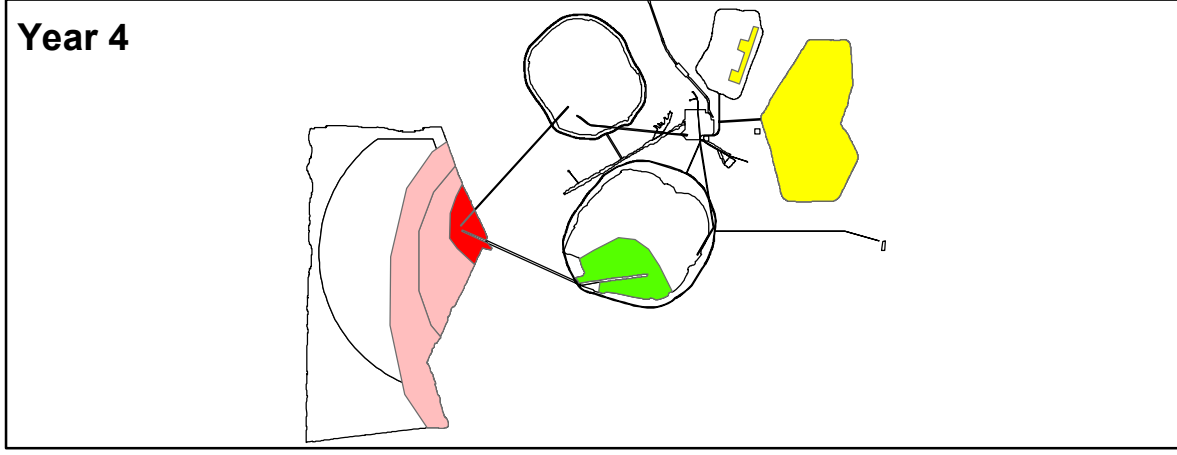
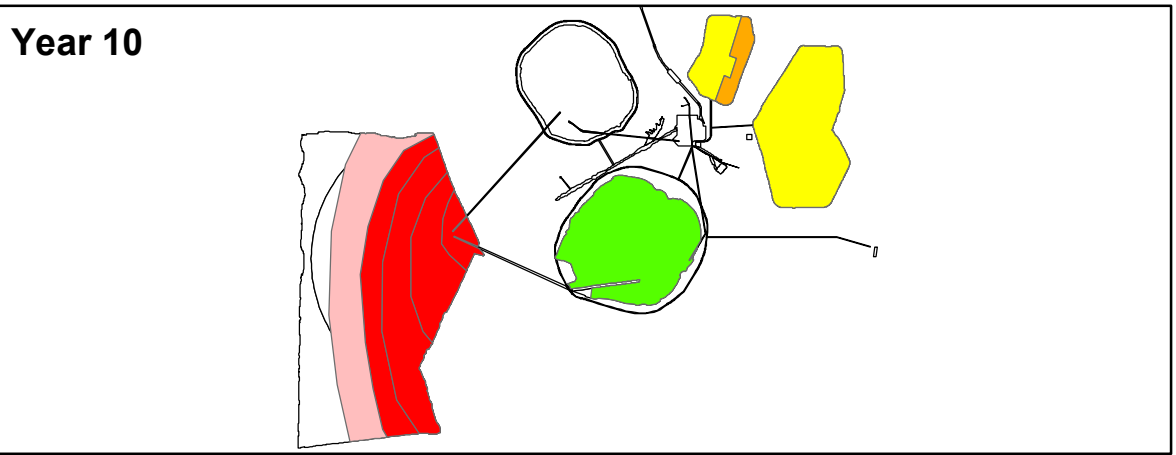
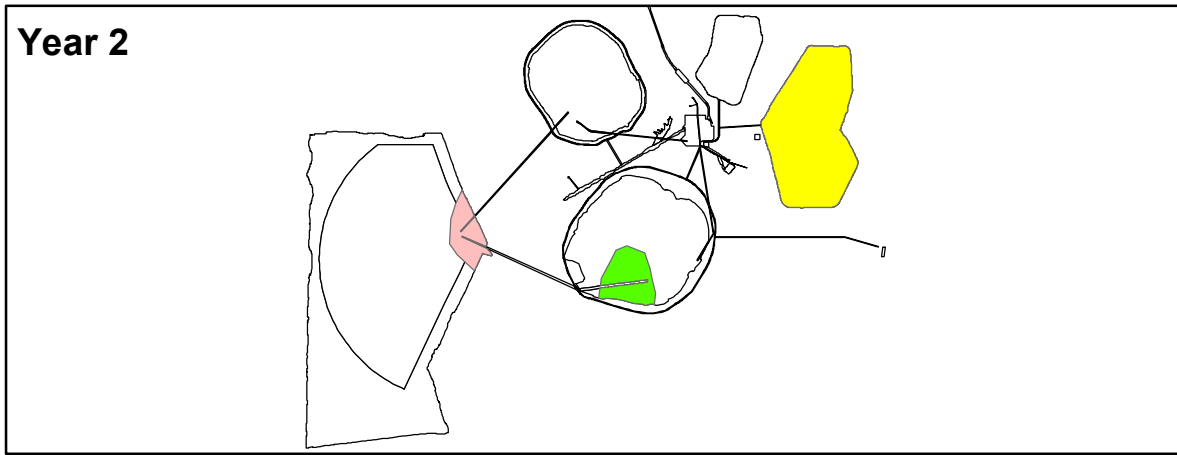
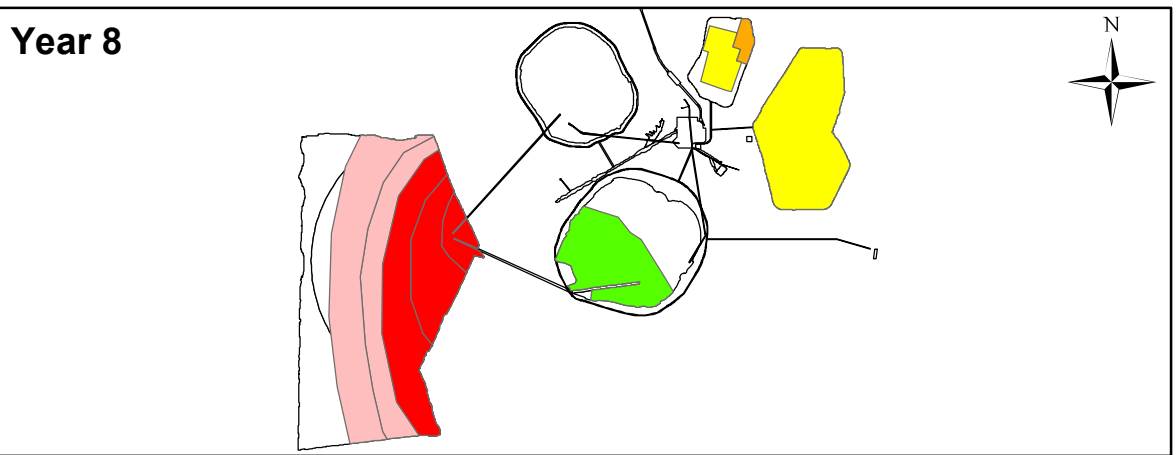
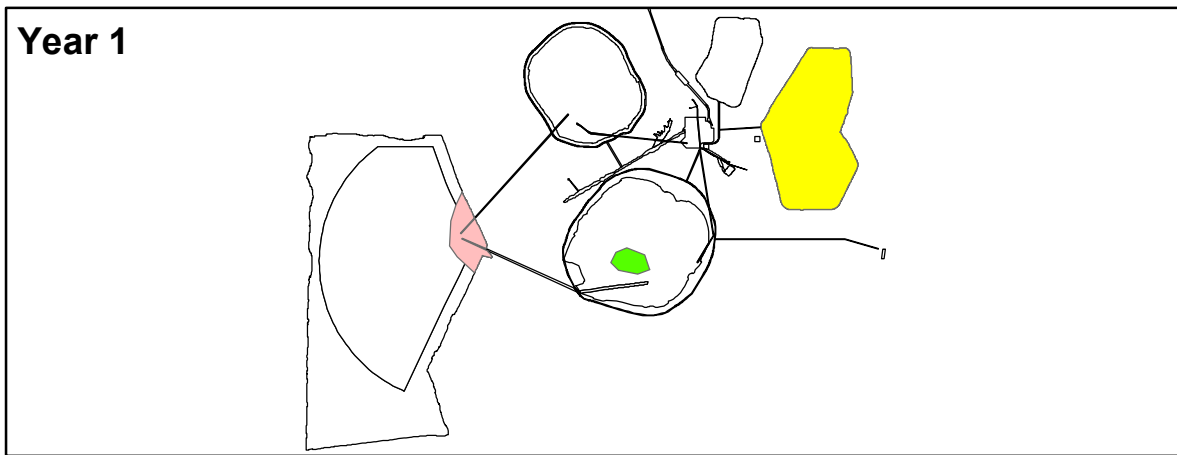
**Reference**

Base data: NTS 1:50,000 scale  
 Orthophoto Date 2007 & 2009  
 Mine facilities: Dated June 15, 2010

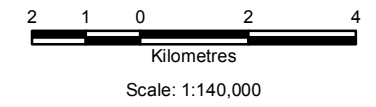
CLIENT:			
PROJECT:		Star - Orion South Diamond Project	
		<b>Final Remediation Placement</b>	
		<b>Figure</b>	
		DATE: X-Other-037_v2.mxd	
GIS TRACKING NUMBER: X-Other-037	PROJECT No: SX0373302		
PROJECTION & DATUM: UTM Zone 13 NAD27	DRAWN BY: EO		



Y:\GIS\Projects\SX\SX03733\_Shore-Gold\_Diamond\_1\Maping\19\_Other\Baseline\X-Other-042\_v3.mxd



- Legend**
- Overburden and Rock Storage Pile
  - Constructed
  - Reclaimed
  - Star and Orion South Pit
  - Reclaimed
  - Constructed
  - Coarse PK & PKCF
  - Constructed
  - Reclaimed
  - Lake
  - Mine Facilities



**Reference**  
AECOM

CLIENT: 		
PROJECT: Star - Orion South Diamond Project		
<b>Construction and Reclamation</b>		
DATE: July, 2012	ANALYST: EO	<b>Figure</b>
JOB No: SX0373301	QA/QC: KM	PDF FILE: X-Other-042_v3_progression.pdf
GIS FILE: X-Other-042_v3.mxd		
PROJECTION: UTM Zone 13	DATUM: NAD27	

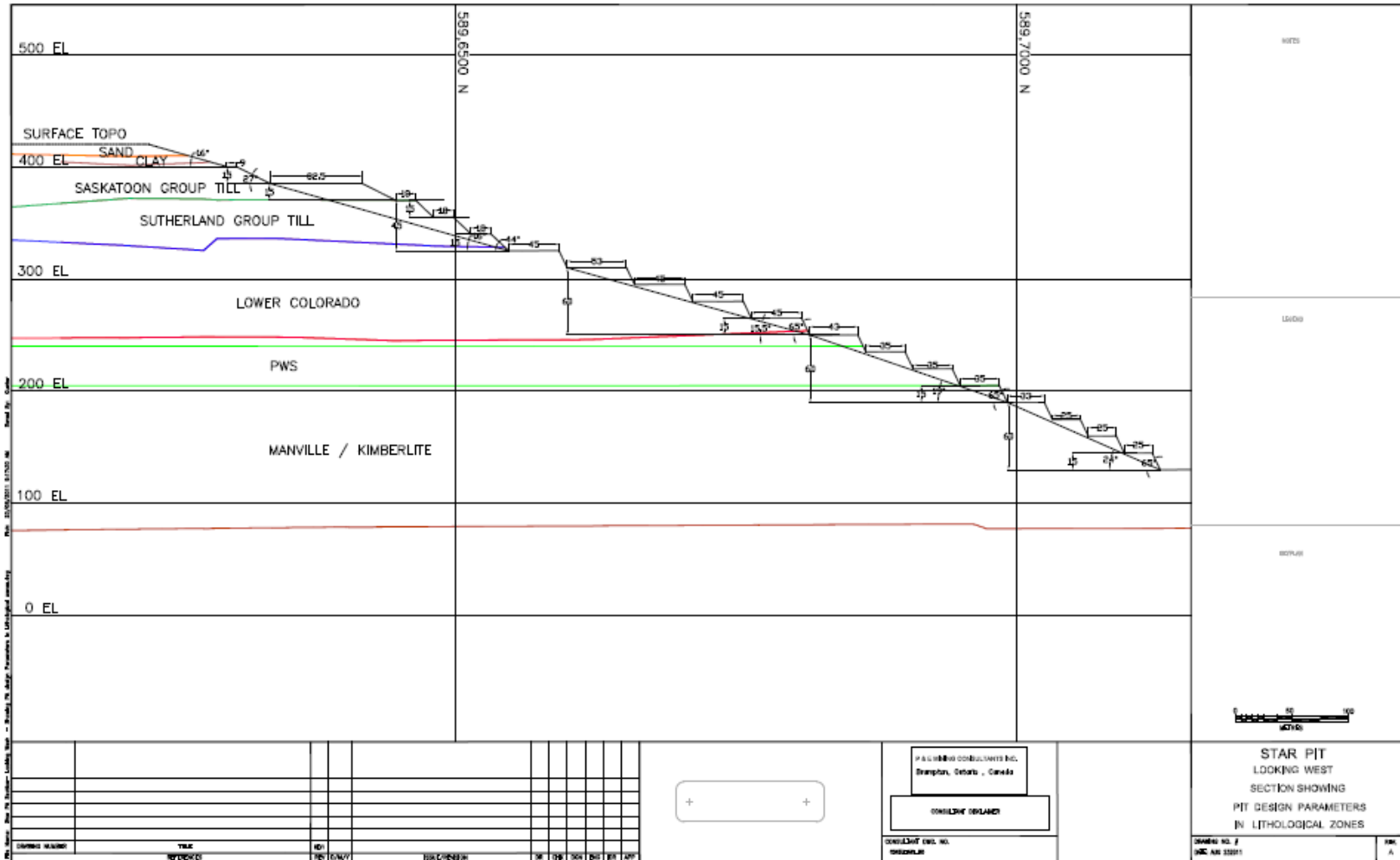
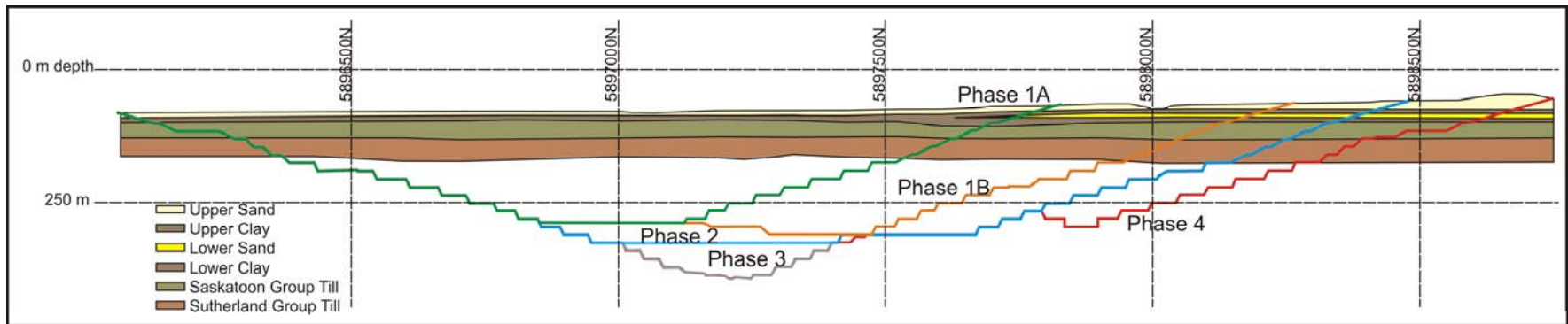


Figure 2.6-4: Typical Pit Slope Configuration





Note: bench height is 15 m.

Figure 2.6-5: Star Pit Cross Section 514,600E Showing Surficial Sand and Clay Layers

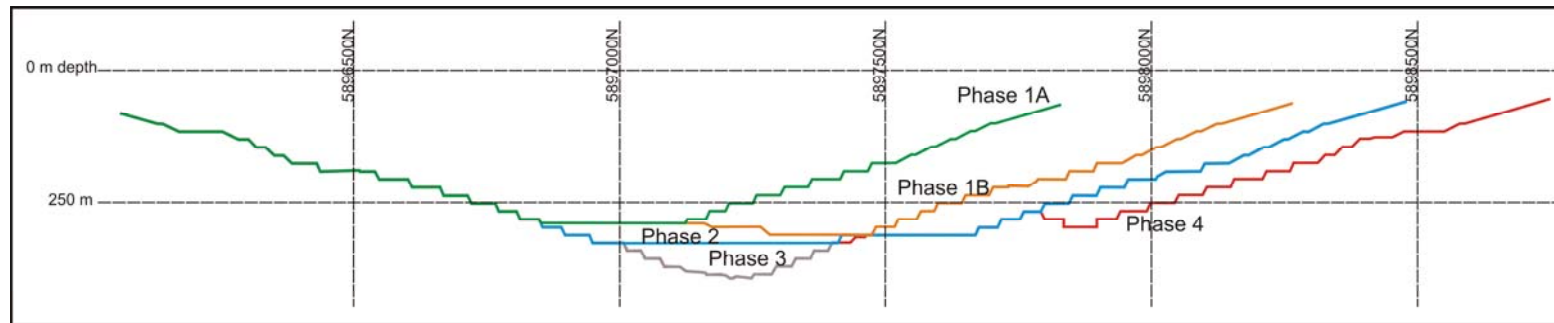


Figure 2.6-6: Ultimate Pit Design – Star Pit Phases 1a, 1b, 2, 3 & 4



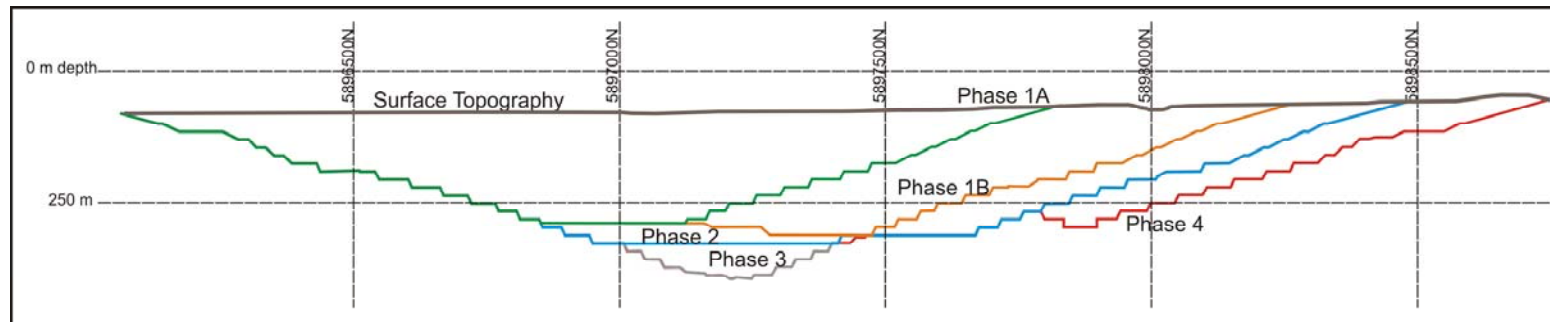


Figure 2.6-7: Star Open Pit Phases – Cross Section 514,600E

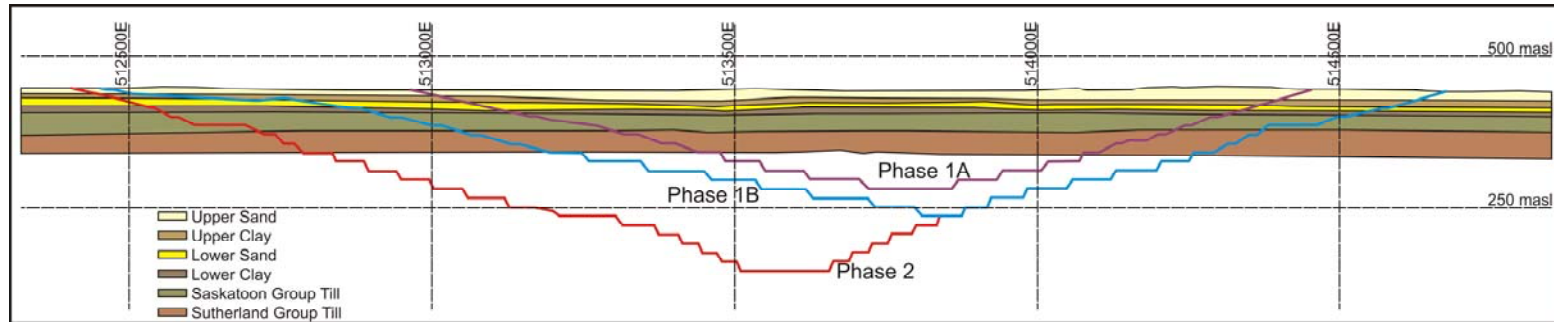


Figure 2.6-8: Orion South Pit Cross Section 5900800N Showing Surficial Sand and Clay Layers

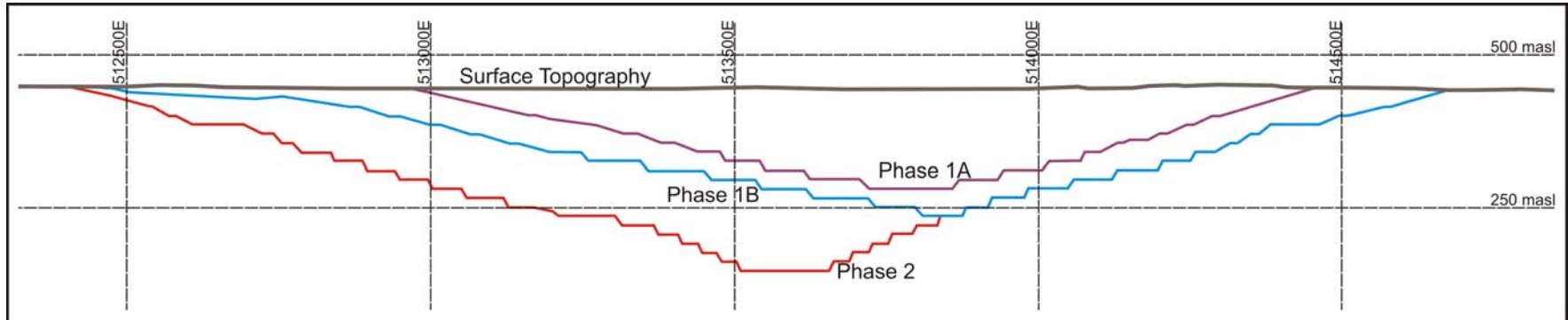


Figure 2.6-9: Orion South Open Pit Phases – Cross Section 5900800N



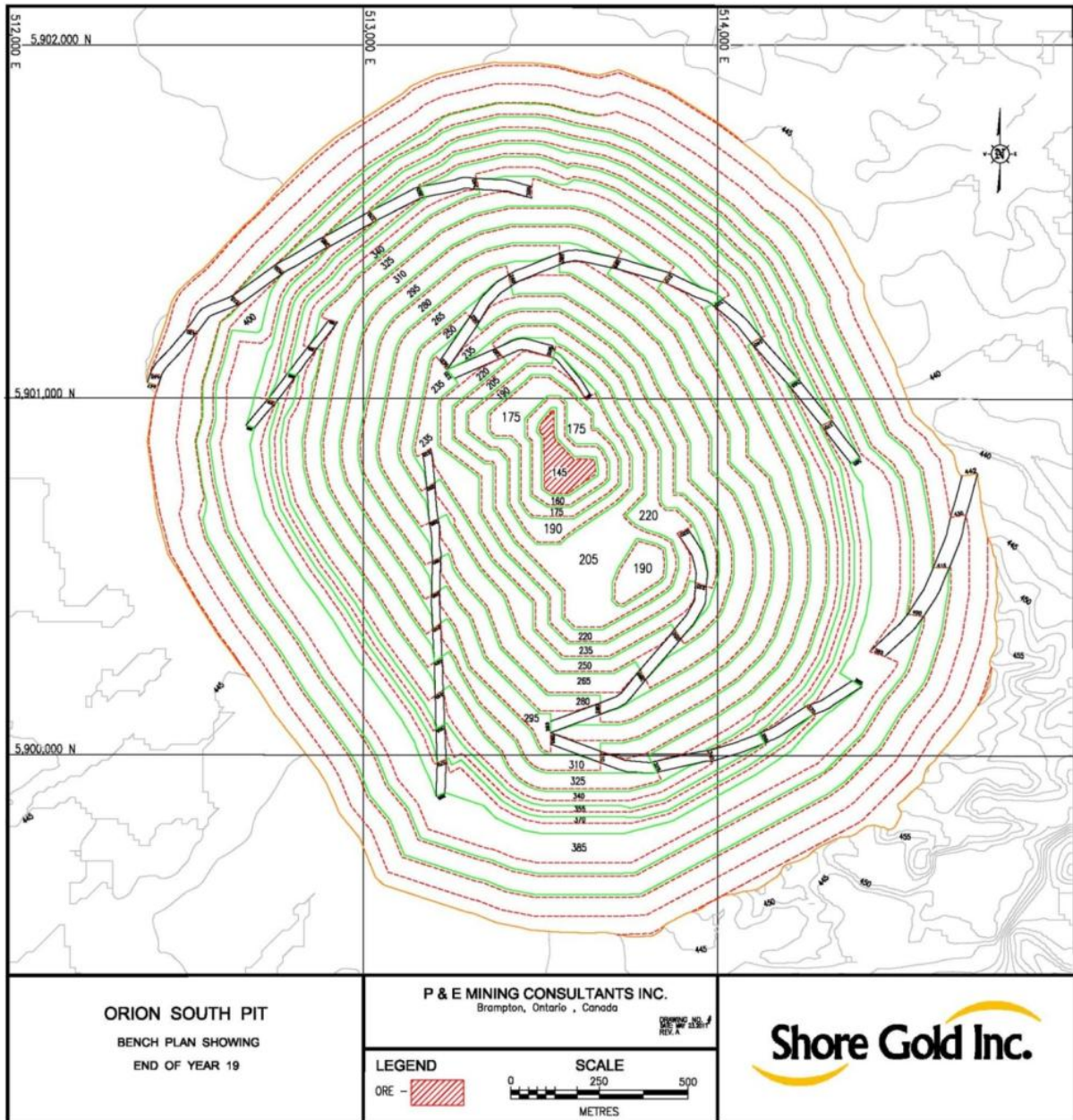


Figure 2.6-10: Orion South Ultimate Pit Design – Pit Phases 1 and 2

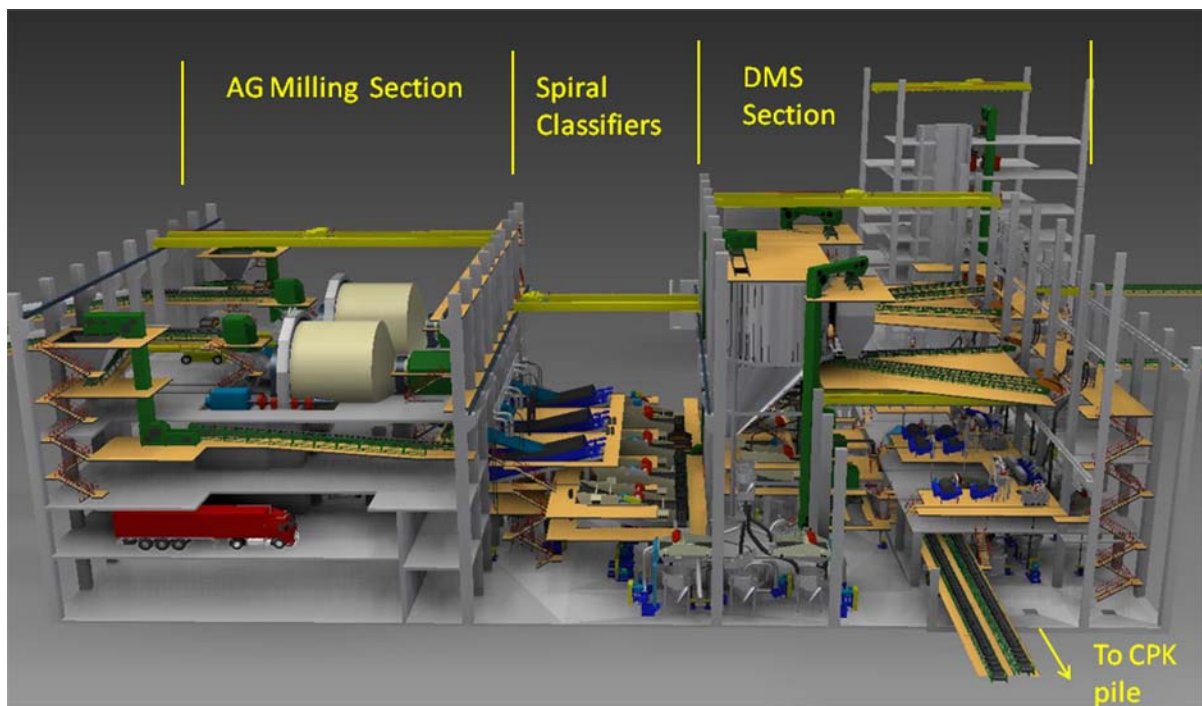
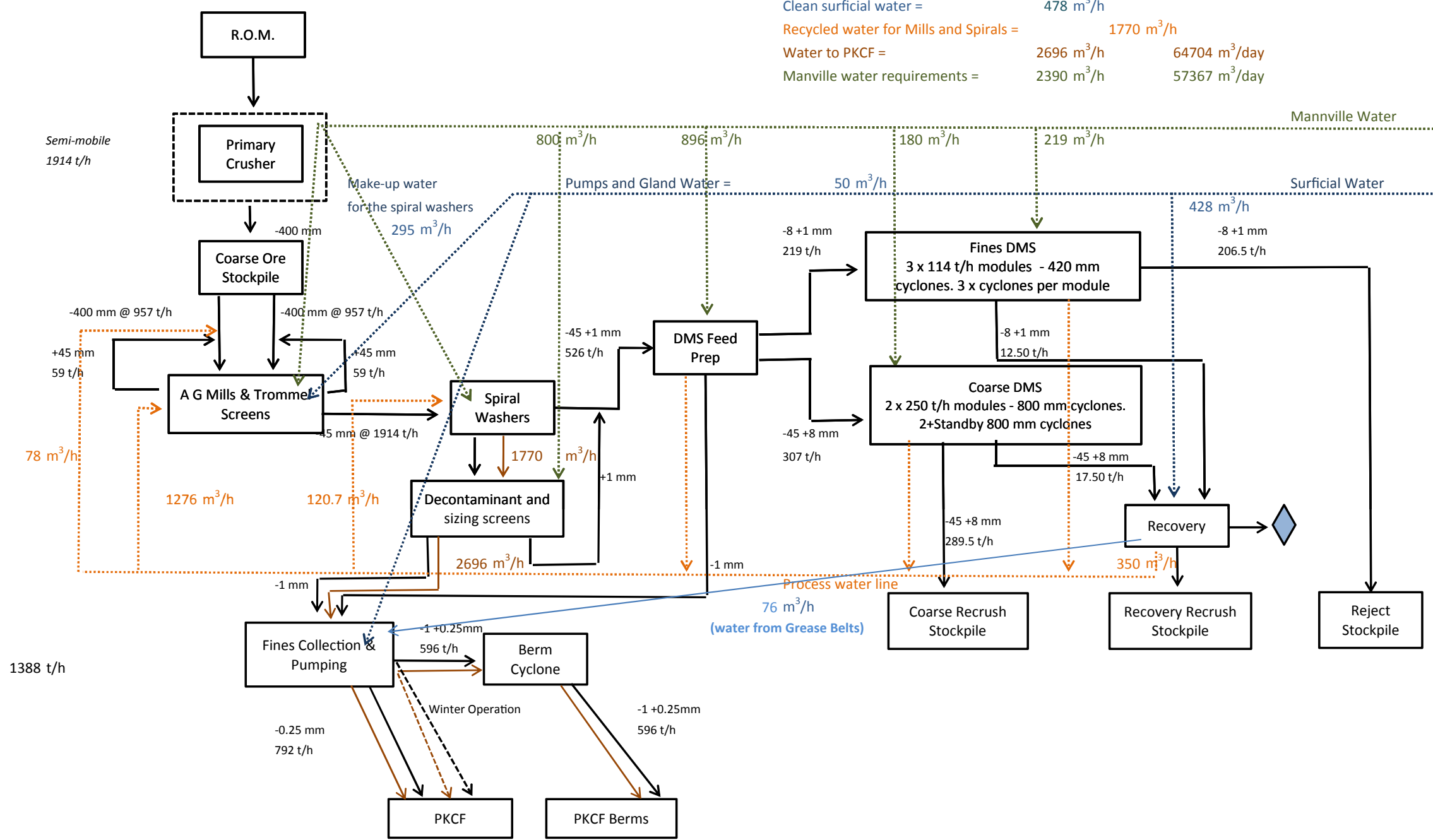


Figure 2.6-11: The Mechanical Configuration of the Process Plant

\\Bby-fs1\by-e-gis\GIS\Projects\SX03730\_Shore\_Gold\_Diamond\_1\Mapping\06\_vegetation\Baseline\06-100-007.mxd

Clean surficial water = 478 m<sup>3</sup>/h  
 Recycled water for Mills and Spirals = 1770 m<sup>3</sup>/h  
 Water to PKCF = 2696 m<sup>3</sup>/h 64704 m<sup>3</sup>/day  
 Manville water requirements = 2390 m<sup>3</sup>/h 57367 m<sup>3</sup>/day

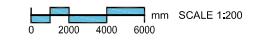
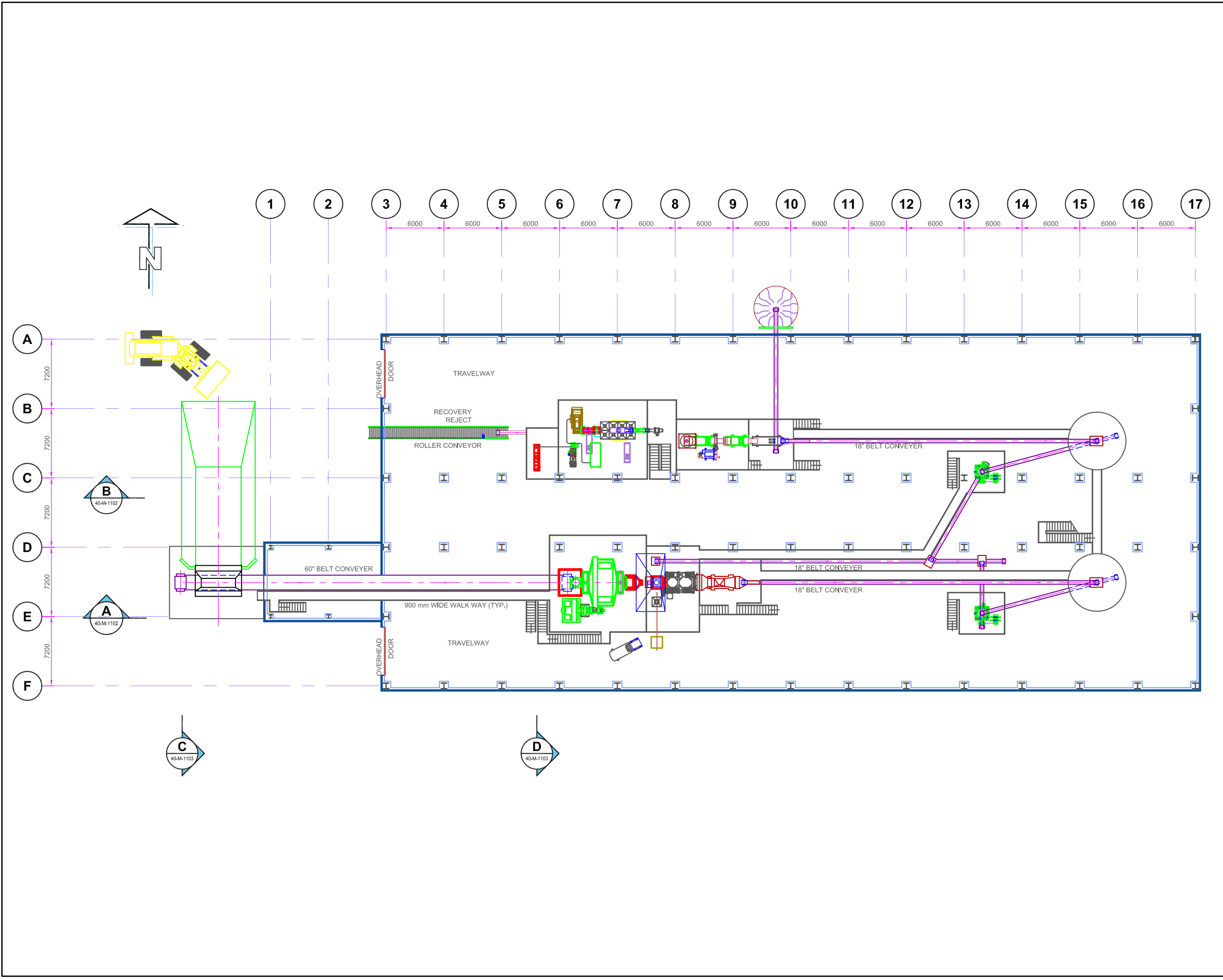


1388 t/h

CLIENT: 		
PROJECT: Star - Orion South Diamond Project		
<b>Block Flow Diagram - Mass Balance and Water Balance</b>		
DATE: November 19, 2010	ANALYST: EO	<b>Figure 2.6-12</b>
JOB No: SX0373301	QA/QC: KM	PDF FILE: X-Other-038_block_model.pdf
GIS FILE: X-Other-038.mxd		
PROJECTION:	DATUM:	



Y:\GIS\Projects\SX\SX03733\_ShoreGold\_Diamond\_1\Mapping\19\_Other\BaselineX-Other-041.mxd



**Reference**  
AECOM

CLIENT: 		
PROJECT: Star - Orion South Diamond Project		
<b>Schematic of the Proposed Bulk Sample Plant</b>		
DATE: November 23, 2010	ANALYST: EO	<b>Figure 2.6-13</b>
JOB No: SX0373301	QA/QC: KM	PDF FILE: X-Other-041_bulk_sample.pdf
GIS FILE: X-Other-041.mxd		
PROJECTION: UTM Zone 13	DATUM: NAD27	

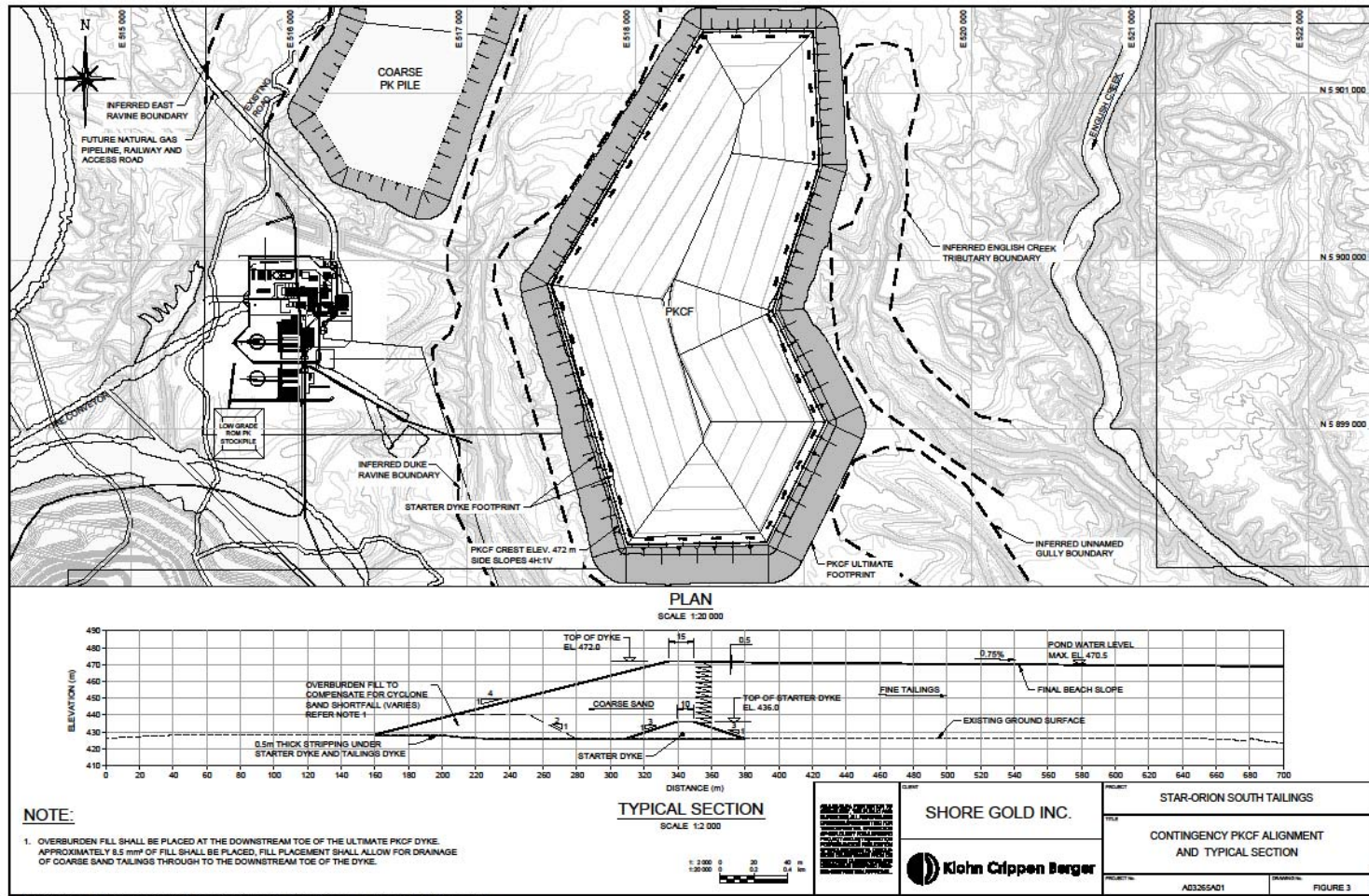


Figure 2.6-14: Contingency PKCF Alignment and Typical Section

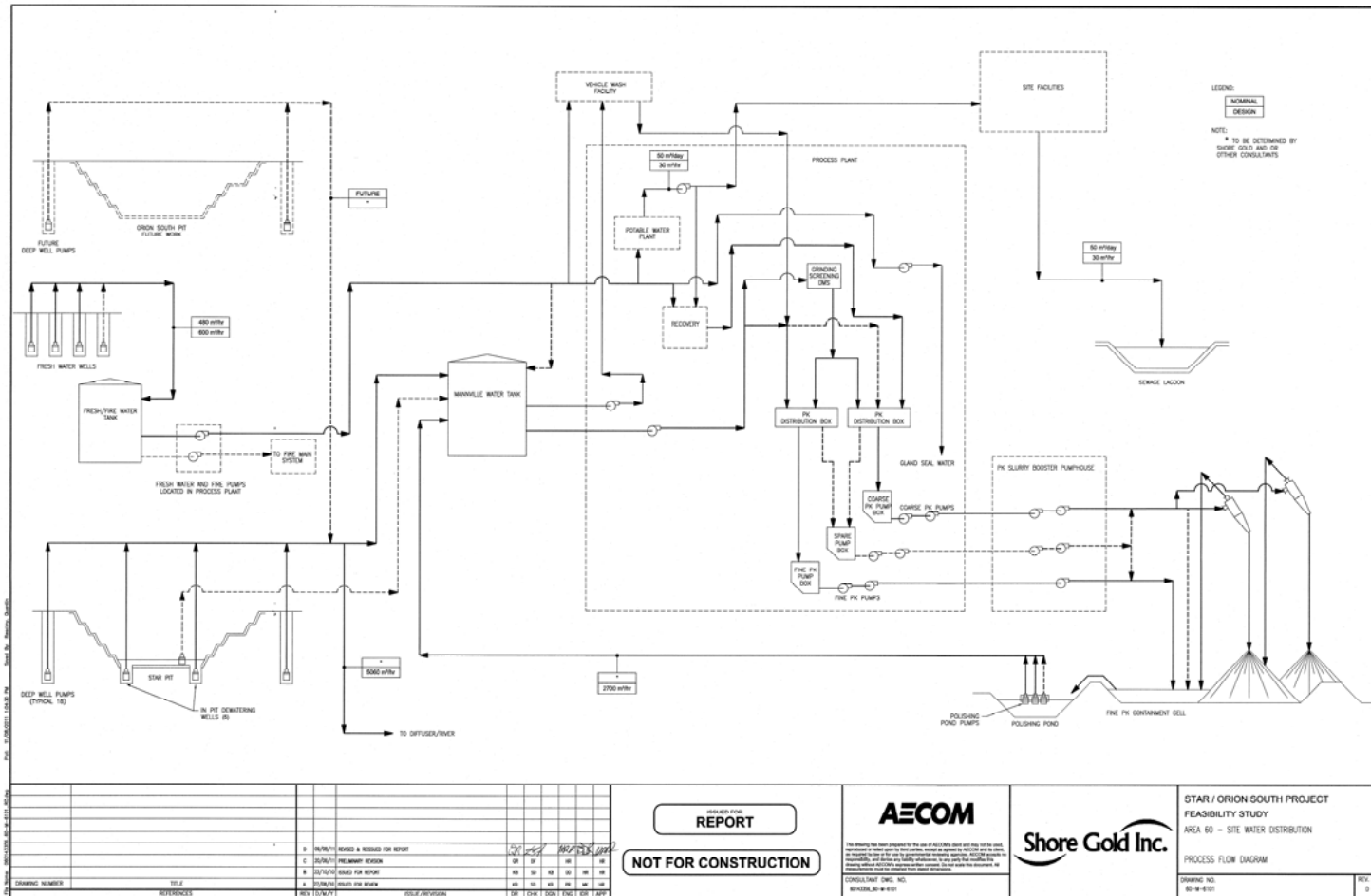


Figure 2.6-15: Site Water Management Schematic