

Impact Assessment of the New Nuclear at Wesleyville Project

INFORMATION AND ENGAGEMENT SESSION – JANUARY 2026

Land Acknowledgement



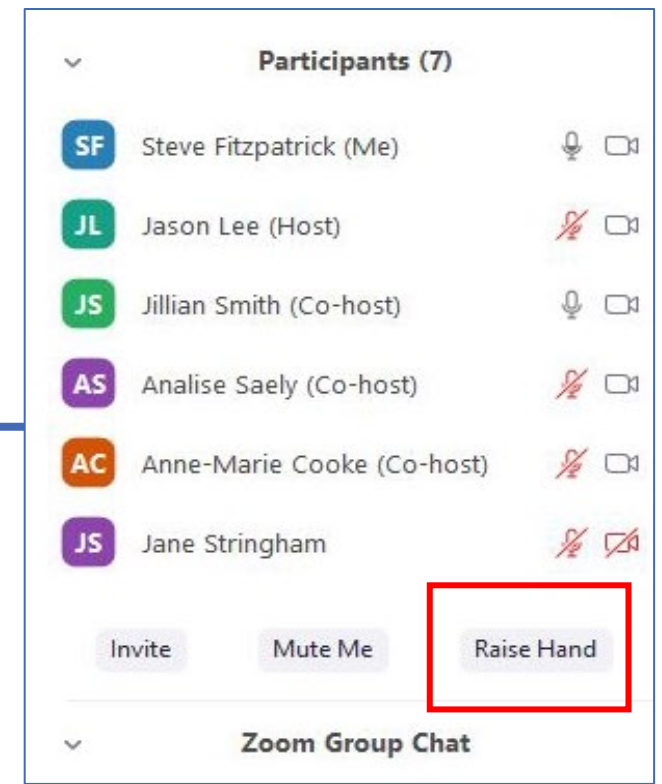
Image source: OPG



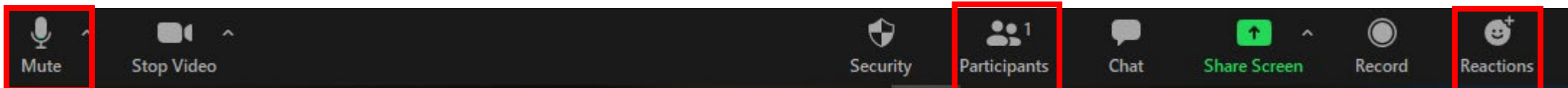
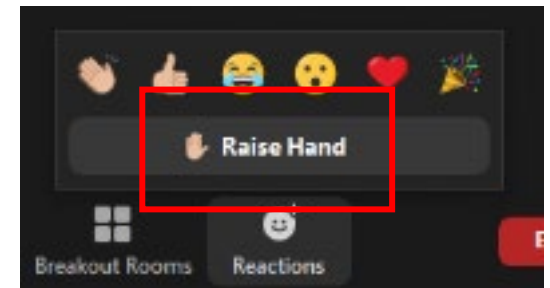
GOVERNMENT OF CANADA

To Participate

- Click the “Raise Hand” function or type the question into the chat
- If you are on the phone, press *9 to ask a question and *6 to unmute/mute
- Please mute your microphone unless speaking



OR



Session Overview

- **Who we are:** The Impact Assessment Agency of Canada and the Canadian Nuclear Safety Commission
- **Why we're here:** New Nuclear at Wesleyville
- **What we do:** Integrated assessment of nuclear projects
- **Public participation**
- **Discussion and Questions**



Who we are

THE IMPACT ASSESSMENT AGENCY OF CANADA & THE CANADIAN NUCLEAR SAFETY COMMISSION



Impact Assessment Agency of Canada (IAAC)

- Federal agency reporting to the Minister of **Environment and Climate Change and Nature**
- Conducts federal impact assessments on major projects in Canada (like marine terminals, major mines and nuclear facilities) under the ***Impact Assessment Act***
- Works with the support of other federal departments
- Conducts meaningful Indigenous consultation and meaningful public engagement
- Cooperates with provincial, territorial and Indigenous jurisdictions



Impact Assessment
Agency of Canada

Agence d'évaluation
d'impact du Canada

Canadian Nuclear Safety Commission (CNSC)

- Canada's nuclear regulator
- Regulates the use of nuclear energy and materials to prevent unreasonable risk to health, safety, security and the environment
- Administers the *Nuclear Safety and Control Act* (NSCA)
- Implements Canada's international commitments on the peaceful use of nuclear energy
- Disseminates objective scientific, technical and regulatory information to the public



Why We're Here

NEW NUCLEAR AT WESLEYVILLE PROJECT



OPG's New Nuclear at Wesleyville Project



Proponent: Ontario Power Generation (OPG), a Crown Corporation wholly owned by the Province of Ontario

Project:

- Site preparation, construction, operation and decommissioning of a new nuclear power plant
- Generation of up to 10,000 megawatts-electric
- Onsite storage of irradiated fuel
- No specific nuclear technology has been selected; multiple technologies will be assessed

Location: Wesleyville, in Port Hope, Ontario

Operation duration: 78 Years

(Image source: OPG New Nuclear at Wesleyville in Port Hope– Initial Project Description – December 2025)

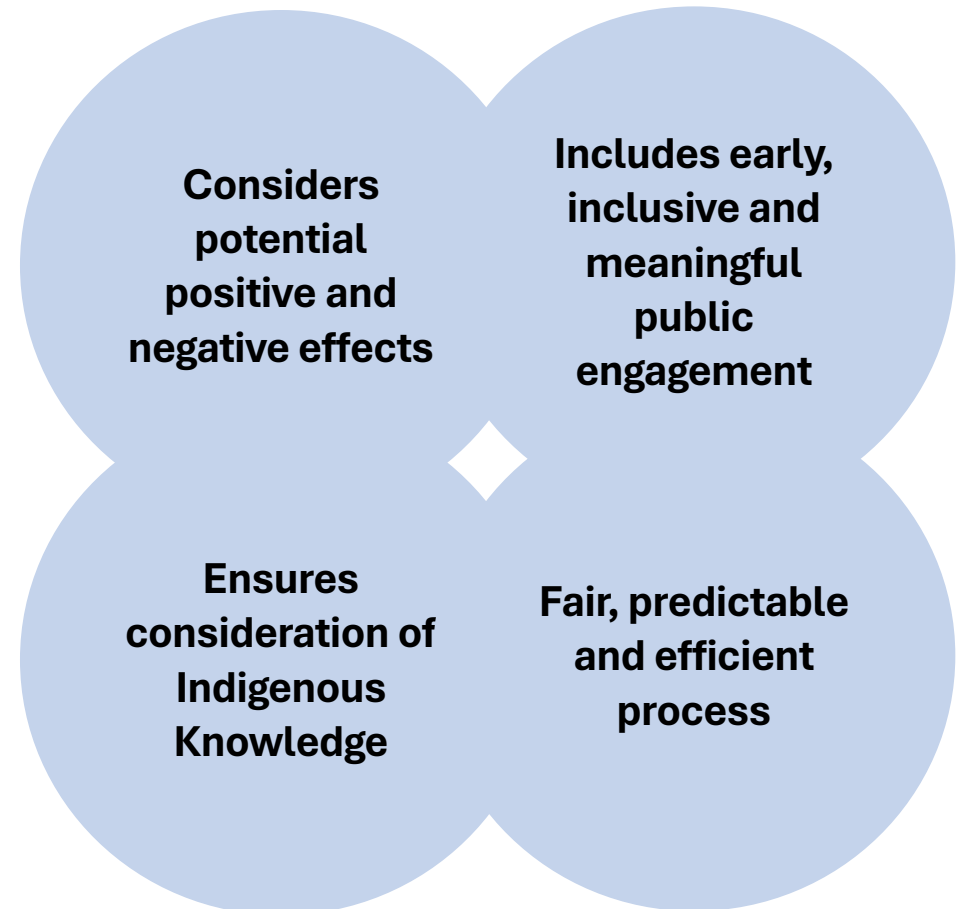
What we do

INTEGRATED ASSESSMENT OF NUCLEAR PROJECTS



Integrated Assessment of Nuclear Projects

- When a project includes activities regulated under the NSCA, IAAC works with the CNSC to conduct an integrated assessment.
- IAAC and the CNSC:
 - cooperate with the common objective that applicable CNSC and IAAC requirements are achieved in a single integrated assessment as "one project, one assessment"
 - assess potential effects over the lifecycle of the project and considers the application for the first licensing phase of a nuclear facility (e.g., "Licence to Prepare a Site").
- CNSC has a robust regulatory framework for licensing and compliance of nuclear facilities and activities



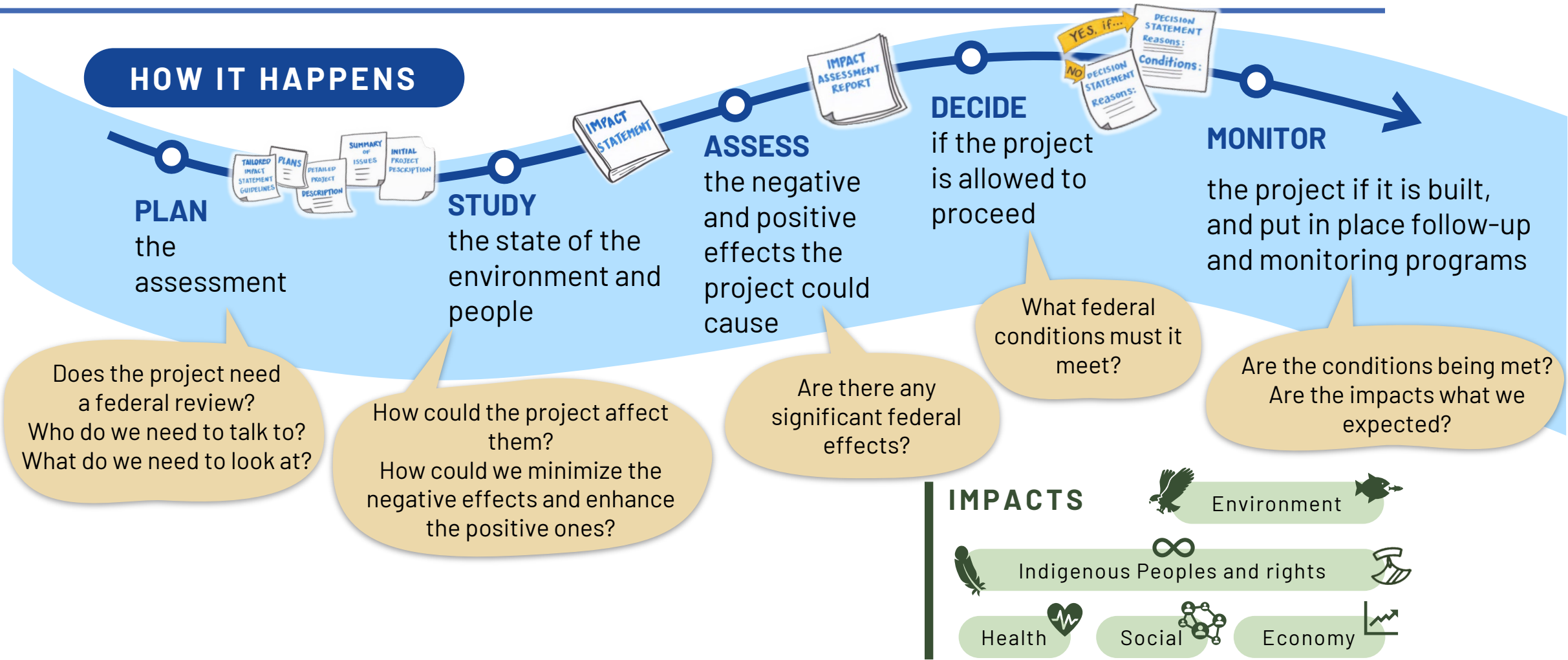
Consultation with Indigenous Peoples

IAAC and CNSC will work throughout the integrated assessment process with Indigenous peoples to:

- promote relationship building
- meet the Crown's duty to consult
- ensure consideration of Indigenous Knowledge
- meet statutory obligations as outlined in the *Impact Assessment Act*
- fulfill the Government's commitment to implement the *United Nations Declaration on the Rights of Indigenous Peoples*



Overview of integrated assessment process





Nuclear Facility Licensing Stages



Site Preparation

Construction

Operation

Decommissioning

**Release from CNSC
regulatory control**

**Licence to
Prepare Site**

**Licence to
Construct**

**Licence to
Operate**

**Licence to
Decommission**

**Licence to
Abandon**



Public Participation

HAVE YOUR SAY ON THE SUMMARY OF THE INITIAL PROJECT DESCRIPTION



Why Participate

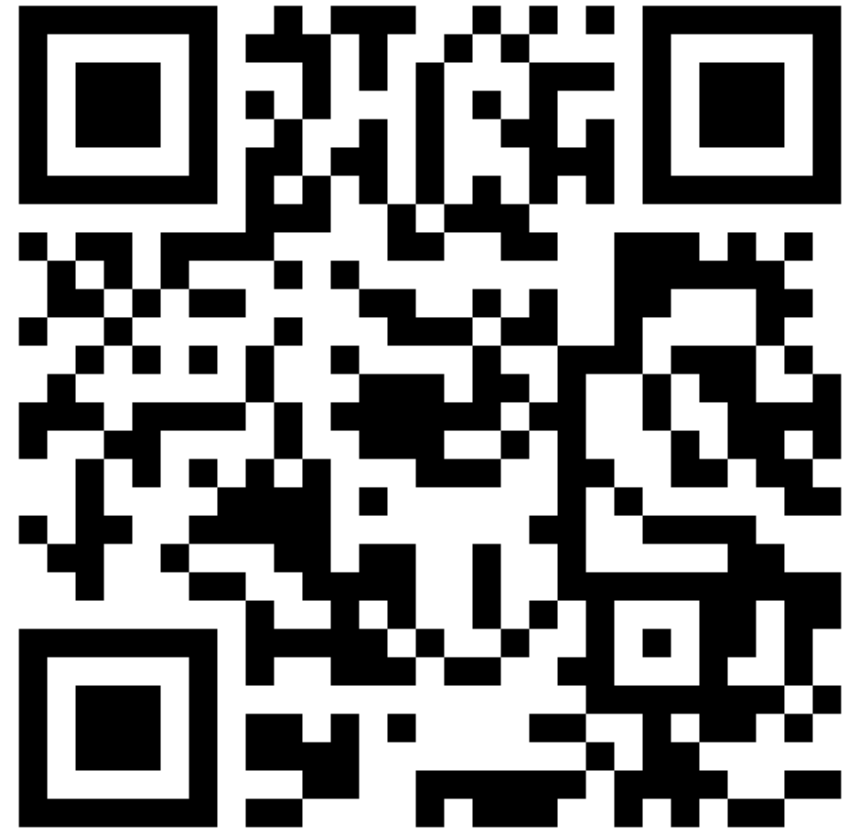
- By participating, the public can:
 - identify issues that are important to them
 - help us understand the context in which the proposed project would take place
 - provide important knowledge or views about a project's potential impacts
 - help identify and address the potential impacts of a proposed project early in an assessment
 - influence decisions about projects or measures to mitigate impacts



How to Participate

- Attend a **public session** hosted by IAAC, CNSC or the proponent to ask questions and share your views
- Visit the Canadian Impact Assessment Registry:
 - Use the “submit a comment” feature on the project page
- Write to wesleyville@iaac-aeic.gc.ca:
 - with your comments and questions
 - to add your address to the project’s email notification list
- Send comments by mail to:

Impact Assessment Agency of Canada
160 Elgin Street, 22nd floor
Ottawa, Ontario K1A 0H3
New Nuclear at Wesleyville Integrated Assessment Team



Have Your Say – Current Comment Period

Public comments are invited on the summary of the **Initial Project Description (IPD)** from January 12 to February 11, 2026

- This is your opportunity to identify key issues related to this project.
- When providing comments, consider the following:
 - What matters to you and your community? For example: wildlife, noise, water quality, jobs, health, etc.
 - How could this project benefit or affect your community?
 - Do you have specific knowledge about your community that may be relevant to the assessment of this project? For example: history, environment, social, etc.
- A **Summary of Issues** will be provided to OPG, who must respond outlining how issues will be addressed

Key Documents :

The **IPD** is prepared by OPG - it provides an overview of the proposed project

The **Summary of Issues** is prepared by IAAC and the CNSC - it outlines key issues for the proposed project

The Canadian Impact Assessment Registry

New Nuclear at Wesleyville Project

Ontario Power Generation Inc. is proposing the construction of a new nuclear power plant in the Municipality of Port Hope, Ontario, within the traditional and treaty Territory of the Williams Treaties First Nations. As proposed, the New Nuclear at Wesleyville Project would provide up to 10,000 megawatts of new nuclear generating capacity and operate for 78 years. Several nuclear reactor technologies will be considered for the project. The project assessment and initial licence application review are being conducted in collaboration with the Canadian Nuclear Safety Commission.

Latest update

The information shared on this page is for the purposes of the integrated assessment for New Nuclear at Wesleyville and has not been approved for use for other purposes.

January 12, 2026 — The Impact Assessment Agency of Canada and the Canadian Nuclear Safety Commission invite Indigenous Peoples and the public to review the [summary of the Initial Project Description](#) for the New Nuclear at Wesleyville Project and provide feedback by February 11, 2026. Comments received will be used to prepare the summary of issues. [Funding](#) is also available to help participate in the impact assessment process for this project. Applications received by February 11, 2026, will be considered.

At a glance

Planning	Impact Statement	Impact Assessment	Decision Making	Post Decision
----------	------------------	-------------------	-----------------	---------------

Planning

In progress 1/180 days

Key documents

- [Summary of the initial project description of a designated project](#) January 12, 2026
- [Initial Project Description of a Designated Project](#) January 12, 2026

Comment periods

- [Public Notice - Comments invited on the summary of the Initial Project Description and funding available](#) January 12, 2026 to February 11, 2026 - Open

Participate

- [Submit a Comment](#)
- [View Comments](#) Total: 10
- [Information Sessions](#)
- [Participant Funding](#)
- [Training](#)
- [All Records](#)
- [Subscribe](#)

View interactive map



Disclaimer

- Location: Port Hope (Ontario)
- Nature of Activity: Nuclear Energy
- Assessment Status: In progress
- Start Date: 2026-01-12
- Proponent: Ontario Power Generation Inc.
- Authorities: Impact Assessment Agency of Canada
- Assessment Type: Planning Phase for Impact Assessment
- Reference Number: 89802

Nearby assessments

...within 200 kilometres

The Proposal by Carmco Corporation for the Redevelopment of its Port Hope Conversion Facility (Vision 2010) Port Hope

New Commercial Lease for placement of a manufactured home - Pickering Lands (414-2) Pickering Lands Site (PLS) Pickering

New Nuclear at Wesleyville Project

Planning (Active)

About this comment period

To prepare for a potential assessment, there are opportunities to comment on the benefits and concerns of a project, who should conduct the assessment, like a province or panel, and what types of studies are needed. Your comments play an important role in better understanding the project and ensuring the assessment is well run.

From 2026-01-12 to 2026-02-11

No related documents for this period.

Disclaimer

The use of this online submission tool is voluntary and subject to the [Terms of Use](#). To submit information or comments, you will need to provide a valid email address. Information submitted via this tool must comply with the [Submission Policy](#) and should not contain confidential information or inappropriate content. Refer to the contact information identified on the relevant assessment page to submit information via other means.

[Submit a comment](#) [View existing comments](#)

Providing Meaningful Input

More
Specific



“I go ice fishing for walleye each winter in Aptos Lake. I am not sure that it will be safe after the project is built, I want to know if there will be changes to the amount of fish in the lake and that the fish remain safe to eat.”



* Specific Concern

* Specific Request



“I want to learn more about how many full-time jobs the project will bring to my community.”

“This project is very bad for fish in the area.”



“This project is very bad.” or
“I support this project!”



General opinion with no
details or request

More
General

* Comments with derogatory language or profanity are **not** accepted

Participant Funding Program

What is it?

- Funding that is provided at key stages of the assessment process for participants who want to provide relevant knowledge or expertise to the integrated assessment.

Who is eligible?

- Individuals, non-profit organizations, and Indigenous Nations and communities and organizations that meet at least one of these eligibility criteria can apply:
 - have a direct local interest in the project, such as living or owning property in the area
 - have community knowledge or Indigenous Knowledge relevant to the assessment
 - have expert information relevant to the anticipated impacts of the project
 - have an interest in the project's potential impacts on Treaty lands, settlement lands or traditional territories, or related claims and rights.



Participant Funding Program

How to access funding?

- Deadline for submitting an application for the first two comment periods: **February 11, 2026**
- Funding opportunities are published on the [Registry's project page](#) and [IAAC's website](#).
- For any questions or to request help with your application, contact:

Funding Programs Team

Phone: 1-866-582-1884

Email: fp-paf@iaac-aeic.gc.ca



Discussion and Questions

CONCLUSION



Discussion and Questions



Reminder – By February 11, 2026:

- Submit your comments on the summary of the Initial Project Description
- Submit an application for participant funding for the first two comment periods

Contact Information:

Integrated Assessment Team:

Email: wesleyville@iaac-aeic.gc.ca

Phone: 343-596-8128

Mailing Address:

New Nuclear at Wesleyville Integrated Assessment Team

Impact Assessment Agency of Canada
160 Elgin, 22nd Floor, Ottawa, ON
K1A 0H3

Social Media: @iaac_aeic

Media relations: Media@iaac-aeic.gc.ca

Participant Funding: fp-paf@iaac-aeic.gc.ca