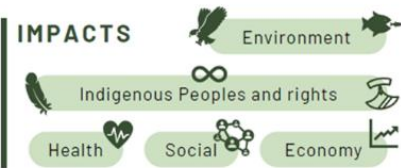


IMPACT ASSESSMENT 101

An impact assessment is a planning and decision-making tool to assess the potential environmental, health, social and economic effects of a project and minimize significant negative effects within federal responsibility.

IMPACTS

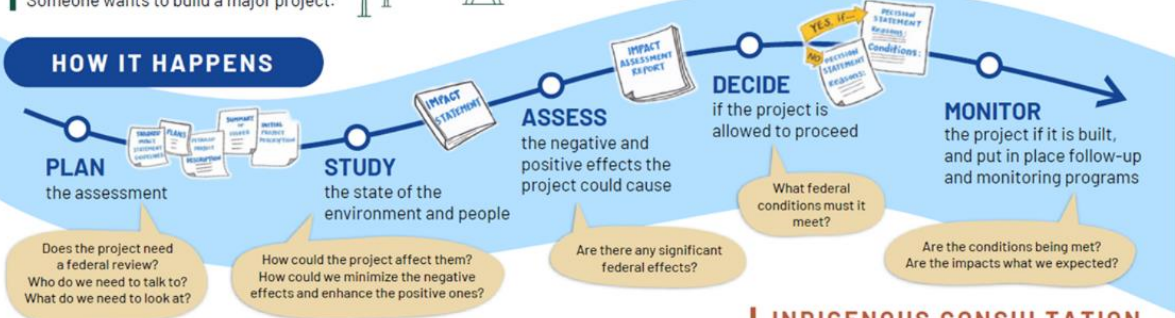


HOW IT STARTS

Someone wants to build a major project.



HOW IT HAPPENS



PARTICIPANT FUNDING

Funding is available to support Indigenous consultation and public participation.

PUBLIC PARTICIPATION

You can influence decisions! Tell us about your community and what matters to you.

INDIGENOUS CONSULTATION

Advancing reconciliation through cultivating meaningful relationships with Indigenous Peoples on:

- Potential impacts on your Nation or community's rights and interests
- Mitigation / accommodation
- Follow-up programs