



Great Bear

Great Bear Gold Project Impact Statement

Appendix C:

Record Of Engagement



Record of Consultation

**Grand Council Treaty 3
(Jan 1, 2022 to Jan 16, 2026)**

Appendix C Record of Consultation: Grand Council Treaty 3 (Jan 1, 2022 to Jan 16, 2026)

Ref. no.	Date	Organizations	Communication Type	Summary	Attachment ID
C-01253	23/06/21	Grand Council Treaty 3	Phone Messaging (SMS,	Grand Council Treaty 3 wanted an update with GBR on the progress of the project	
C-01542	23/08/31	Anishinaape Pow Wow Committee Grand Council Treaty 3 Keesic Strategies Keewatin Patricia District School Board Many Paths	Email	Link for the draft video of the 2023 Pow Wow distributed.	
C-01545	23/09/07	Anishinaape Pow Wow Committee Grand Council Treaty 3 Keesic Strategies Keewatin Patricia District School Board Many Paths	Email	Provided names for the people who spoke in a Pow Wow video created by the Keewatin-Patricia District School Board.	
C-01673	23/09/28	Grand Council Treaty 3	Email	GBR's External Relations Manager introduction with Grand Council Treaty #3 and request to meet in order to introduce the project and better understand and learn of the initiatives and programs that the Territorial Planning Unit, and that Grand Council Treaty #3 are	
C-01748	23/03/21	Grand Council Treaty 3 Wabauskang First Nation	In Person	Treaty 3 Environmental Stewardship Gathering with registration form.	
C-01870	23/10/02	Grand Council Treaty 3	Email	Response from Grand Council Treaty 3 to GBR's introduction and request to meet	
C-01919	23/10/03	Grand Council Treaty 3	Email	Meeting coordination between members of Grand Council Treaty 3 and GBR leading up to the October 27th meeting.	
C-02020	23/03/29	Grand Council Treaty 3	Email	Summary of meeting on March 28th with Treaty #3. Discussions include a large focus around Bill 71, and conversations around slowing permits, the Great Earth Law and MAI Guardian Program, water, the discussion of Land Managers and the creation of a database for Indigenous information sharing.	
C-02077	23/10/27	Grand Council Treaty 3	In Person	Meeting between representatives of Grand Council Treaty #3 and Great Bear Resources. Focus of meeting was to update the Territorial Planning Unit on the status of the Project. Notable focus on AEX process outlining preliminary approaches on water management, closure, permit overview, baseline, and timeline. GBR also provided an update on community dialogue approach. TPU staff provided an overview of GCT3 and group shared next step opportunities including Great Earth Law learnings, and participating in regional based information sharing.	GCT_102723_01.pdf
C-02177	23/03/14	Grand Council Treaty 3	Email	Inquiry into the Environmental Stewardship Gathering and who can attend. Information was given regarding the topics to be discussed and the purpose of these meetings, which was to share information with one another within the community. Accommodations for the event were also discussed.	
C-02178	23/02/06	Grand Council Treaty 3	Email	Confirmation regarding the registration of an account with the GCT3 Document Management System, and mapping information.	
C-02245	23/03/17	Grand Council Treaty 3	Email	Informing GBR of the Venue Change of The upcoming Grand Council Treaty #3 Environmental Stewardship Gathering.	
C-02259	23/03/23	Grand Council Treaty 3	Email	GBR inquiry regarding the upcoming Grand Council Treaty #3 meeting in Dryden for the Land Managers and Mineral Development Advisor Meeting. Additional Thanks were given for the Treaty #3 Environmental Stewardship Meeting which GBR attended. GCT3 confirmed that anyone can attend, and that Kinross will be in	
C-02264	23/03/29	Grand Council Treaty 3	Email	Discussion about reimbursement of mileage costs from GTC3's Land Managers Meeting and who would be getting reimbursed from the GBR side.	
C-02299	23/04/25	Grand Council Treaty 3	Email	Update on the GCT3 Geoportal.	
C-07524	24/02/21	Grand Council Treaty 3	Email	GCT3 reaching out to get a brief update on the Great Bear Project. Great Bear Project is situated on Treaty #3 traditional territory. They would like to learn more about the Planning Phase, what it consists of, and what the consultation with Indigenous communities and organizations requirements are within this phase. They'd also like to know when the "Impact Statement" phase will commence and how preparation for it will look like.	



Appendix C Record of Consultation: Grand Council Treaty 3 (Jan 1, 2022 to Jan 16, 2026)

Ref. no.	Date	Organizations	Communication Type	Summary	Attachment ID
C-09960	24/08/30	Grand Council Treaty 3	Email	GBR and Grand Council Treaty 3 discuss their recent meeting and future collaboration between Great Bear Resources and the Grand Council Treaty #3. GBR shares attachments and expresses readiness to support the TPU and host future meetings. GCT3 appreciates the relationship between GBR and local communities and looks forward to more informative presentations. GBR and GCT3 coordinate schedules for updates and meetings, with GCT3 seeking ongoing updates and appropriate contacts within GBR for	
C-09962	24/08/30	Grand Council Treaty 3	In Person	Great Bear staff and GCT3 mineral development staff met to discuss status of the Great Bear Project and next steps forward. Key discussion points include status of ongoing dialogue with WFN, LSFN, and ANA and current commitments. Great Bear provided an overview of the Great Bear Project, including the AEX program and its main objectives. GBR emphasized commitment to integrating Indigenous values, including WFN, LSFN, and ANA's perspectives, and highlighted the upcoming ceremony. Great Bear staff also updated GCT3 on the Anishinaabe Led Impact Assessment (ALIA) process and the company's openness to independent evaluations by ANA. GCT3 inquired about Indigenous hiring, and GBR confirmed that there are no current quotas but emphasized the importance of reflecting Indigenous cultural considerations. The discussion also included mitigation measures, such as desulphurization in the TMF and water treatment, which GCT3 received positively. GBR has been recognized for its approach, and GBR reiterated the company's commitment to regular updates and supporting regional communications. GBR also encouraged GCT3 to reach out for any additional capacity considerations. GCT3 shared that they are developing a Mining 101 guide to support Nations unfamiliar with mining.	GCT3_083024_01.pdf
C-10013	24/09/06	Grand Council Treaty 3	Email	Grand Council Treaty 3 re-introducing Mineral Sector Specialist, and expressing hopes to discuss the current development stages of the Great Bear and Dixie Projects, along with the contributing discussions with the Territorial Planning Unit of Grand Council Treaty #3. Request for ongoing updates for their council. GBR apologizes for the delay in response, and offered a time to meet.	
C-10363	24/09/05	Grand Council Treaty 3	Email	GBR External Relations Manager thanking Grand Council Treaty 3's Mineral Sector Specialist regarding the previous meeting. GBR staff noted they will be in Wabauskang next week to support the Resource Day meeting, and will be unable to attend the CENCan Expo, but that other team members will be present who are supporting and leading permitting efforts for the Project. The staff attending were copied on the email to introduce them to the Mineral Sector Specialist and noted that they will be able to answer any additional questions at CENCan. GTC3 thanked GBR for the introduction and noted they look forward to meeting the staff.	
C-10364	24/09/10	Grand Council Treaty 3	Email	Distribution of the Preliminary Economic Assessment press release for the GBR project to Grand Council Treaty 3. GBR noted that if there were any questions, the GBR staff are there for follow-up. GCT3 thanked GBR for the update, and noted their interest in this	
C-11221	24/10/17	Grand Council Treaty 3	Email	GBR asking GCT3 about their upcoming trip to Red Lake to tour the Evolution Mine. GBR notes that they welcome the opportunity to host the GCT3 if time permits in order to provide a tour of the Great Bear Project and introduce the GBR team and project to the group.	
C-12935	25/02/10	Common Voice Northwest Energy Task Force Grand Council Treaty 3 Hydro One	Email	Great Bear copied on communication from Hydro One as it relates to transmission projects for the region. Noted in communication that advancement in options for transmission project from Dryden to the Red Lake area continues to advance. Communication to the Northwest Energy Task Force detailing ongoing work to date by Hydro One and its interaction with private proponents, municipalities, and Indigenous communities. Key message from Hydro One is that work is ongoing, and that priority in advancing power needs for the Red Lake/Ear Falls areas is advancing in collaboration with appropriate Crown representatives, proponents, and Indigenous	Confidential engagement



Appendix C Record of Consultation: Grand Council Treaty 3 (Jan 1, 2022 to Jan 16, 2026)

Ref. no.	Date	Organizations	Communication Type	Summary	Attachment ID
C-12936	25/01/27	Grand Council Treaty 3	Phone Call	Follow up call to email communication issued to GCT3 staff. GCT3 and Great Bear staff discussed the current status of the Project, with updates around the Anishinaabe Led Impact Assessment, and overall project provided. Great Bear staff spoke to the approach, and that it would be ideal to align with GCT3 on collaboration in supporting the development of the Project. Great Bear staff noted the board mandate of GCT3 outside of the TPU and ensuring awareness and understanding of programs would aid in the Project. Great Bear noted the question around sponsorship falls in this same light to ensure awareness and promote the great regional program and activities conducted. GCT3 spoke to discussions involving MAI and compliance with it forward. GCT3 to follow up following meeting with TPU leadership.	
C-12939	25/01/15	Grand Council Treaty 3	Phone Messaging (SMS, WhatsApp, etc.)	Great Bear and GCT3 staff exchanging messages, with GTC3 highlighting ahead of PDAC that , and GCT3 would like to further discuss at PDAC.	
C-12942	25/01/16	Grand Council Treaty 3	Phone Messaging (SMS, WhatsApp, etc.)	Great Bear and GCT3 staff exchanging messages around attendance at PDAC. GCT3 staff let Great Bear know of positive momentum and prior actions and seeks to align on group setting meeting. Great Bear confirms and suggests follow up call.	
C-13390	25/02/13	Grand Council Treaty 3	Email	GBR reaching out to Grand Council Treaty 3's Mineral Sector Specialist to ask if they will be attending PDAC, GBR is reaching out to invite GCT3 to meet at PDAC with the GTC3 team.	
C-14941	25/04/07	Grand Council Treaty 3	Email	GBR emailed the Grand Council Treaty 3 to inquire if they will be attending the OPA Conference in Thunder Bay.	
C-15152	25/06/03	Grand Council Treaty 3	Email	GBR emailed TPU to see if they would like any updates on the status of the Project and current activates.	
C-15461	25/06/03	Grand Council Treaty 3	Email	Grand Council Treaty 3 emailed GBR to advise that they are interested in an update on the project via an in-person or virtual meeting.	
C-15683	25/06/24	Grand Council Treaty 3	Email	GBR reaching out to GCT3 in order to see if GCT3 would like an update on the Project status as well as current activities, as well as welcoming a status update on GCT3's initiative regarding regional watershed activities and asking about the possibility of speaking for the Fall Assembly, as well as offering to swing by the council office if there is a need to further discuss. GCT3 noted that they have looped in the appropriate people for further questions surrounding the watershed work, as well as asking further questions about what GBR was envisioning for a community update. GCT3 also asked what GBR would be presenting during the fall assembly. GBR noted that they are looking to meet with GCT3 in mid-July and would be open to attending an in-person or virtual meeting.	
C-16763	25/07/23	Grand Council Treaty 3	Email	GCT3 following-up with GBR noting that GCT3 is looking forward to hearing how GBR can provide updates on the Great Bear Project. GCT3 noted that they are open to discuss options from Tuesday to Thursday if possible for GBR.	
C-16764	25/07/31	Grand Council Treaty 3	Email	GBR following up to GCT3's request for a project update, noting that GBR would need additional time to coordinate an update for GCT3, but will follow-up as soon as possible.	
C-16765	25/07/31	Grand Council Treaty 3	Email	GCT3 responding to GBR regarding the expected timing for the update. GCT3 thanked GBR for the update.	
C-17718	25/08/15	Grand Council Treaty 3 Lac Seul First Nation Shared Spirits Wabauskang First Nation	Email	GBR following up with GCT3 regarding previous discussions surrounding an update on the Great Bear Project. GBR notes that they are happy to provide an update and can schedule a joint meeting with WFN, LSFN, and SS for the week of August 25th. GBR proposed an initial date and asked those copied to provide their	
C-17719	25/08/18	Grand Council Treaty 3 Lac Seul First Nation Shared Spirits Wabauskang First Nation	Email	GCT3 confirming with GBR that the date proposed for the Great Bear Resources Project update works for them.	
C-17720	25/08/25	Grand Council Treaty 3 Lac Seul First Nation Shared Spirits Wabauskang First Nation	Email	GBR responding to GCT3 and noted that after conversations with LSFN and WFN, it would be best to host this update following the joint Environmental Management Committee the following Thursday on August the 28th instead, alternatively offering the following September 25th EMC date.	
C-17721	25/08/25	Grand Council Treaty 3	Email	GCT3 confirming that the September date proposed by GBR works with GCT3 for the Project update.	



Appendix C Record of Consultation: Grand Council Treaty 3 (Jan 1, 2022 to Jan 16, 2026)

Ref. no.	Date	Organizations	Communication Type	Summary	Attachment ID
C-17819	25/08/15	Grand Council Treaty 3	Email	Grand Council Treaty 3 responded to GBR's offer to provide an update presentation that they are available on August 26 and 29.	
C-17820	25/08/18	Grand Council Treaty 3 Lac Seul First Nation Shared Spirits Wabauskang First Nation	Email	Grand Treaty Council 3 responded to GBR's offer to provide an update presentation that they are available on August 25.	
C-17821	25/08/25	Grand Council Treaty 3 Lac Seul First Nation Shared Spirits Wabauskang First Nation	Email	GBR emailed Grand Council Treaty 3 requesting that the meeting be pushed back until after the Environmental Management Committee meeting. GBR suggested August 28 or September 25 as an alternative.	
C-17822	25/08/25	Grand Council Treaty 3	Email	Grand Council Treaty 3 responded to GBR's request to move the meeting date, noting that after September 25 should be fine.	
C-18777	25/09/25	Grand Council Treaty 3 Lac Seul First Nation Shared Spirits Wabauskang First Nation	Virtual	<p>GBR provided a project update and introduction, followed by participant introductions. GBR outlined the project's current status, noting delays in some exploration permits but continued progress on infrastructure such as the water treatment plant, Chukuni River pipeline, and natural gas substation. Partnerships with Indigenous businesses like Shared Spirits were highlighted, along with GBR's commitment to environmental stewardship and ongoing baseline research.</p> <p>An update on the ALIA and Impact Statement process was shared, with GBR submitting the first of three phases and engaging First Nations and the public for feedback. The proposed Main Mine would operate for 26 years as both open-pit and underground, processing 10,000 tonnes per day and employing 300–1,000 people, prioritizing local and Indigenous hiring.</p> <p>GBR emphasized continuous engagement through monthly meetings and workshops, including a fish offsetting workshop and cultural initiatives like a wild rice revitalization project. Recent highlights included Elder and archaeological tours, ceremonies, sponsorships, and drone training.</p> <p>Shared Spirits presented on the Chukuni Aquatic Monitoring Program, tracking water quality and supporting community training for long-term monitoring. Discussion also covered collaborative ALIA work, decision-making roles, and long-term planning based on cumulative impacts and the Seven Generations principle.</p> <p>GBR and participants closed by expressing appreciation for the collaboration and transparency throughout the process.</p>	GCT3_092525_01.pdf GCT3_092525_02.pdf



BUILDING A LEGACY IN RED LAKE, ONTARIO

Great Bear Project

Proposed Underground and Open Pit Gold Mine

**Grand Council Treaty 3
September 6, 2023**

KINROSS

Forward Looking Statements

All statements, other than statements of historical fact, contained or incorporated by reference in or made in this presentation, including but not limited to any information as to the future performance of Kinross, constitute “forward looking statements” within the meaning of applicable securities laws, including the provisions of the Securities Act (Ontario) and the provisions for “safe harbor” under the United States Private Securities Litigation Reform Act of 1995 and are based on expectations, estimates and projections as of the date of this presentation. The words “expect”, “future”, “goal”, “potential”, or “plan” or variations of or similar such words and phrases or statements that certain actions, events or results may, can, could, would, should, might, indicates, or will be taken, and similar expressions identify forward looking statements. Forward-looking statements contained in this presentation include, without limitation, statements with respect to: future development (including but not limited to the success of exploration or development of projects); project development timelines; or timing of the completion of studies. Forward-looking statements are necessarily based upon a number of estimates and assumptions that, while considered reasonable by Kinross as of the date of such statements, are inherently subject to significant business, economic, legislative and competitive risks and uncertainties and contingencies. Many of these risks and uncertainties and contingencies can affect, and could cause, Kinross’ actual results to differ materially from those expressed or implied in any forward looking statements made by, or on behalf of, Kinross. Such risks and uncertainties include, but are not limited to: operational or technical difficulties in connection with development, mining or processing activities; potential direct or indirect operational impacts resulting from infectious diseases or pandemics such as the ongoing COVID-19 pandemic; the volatility of prices of gold and silver; uncertainty of mineral reserve and mineral resource estimates; and the speculative nature of gold exploration and development including, but not limited to, the risks of obtaining necessary licenses and permits. There can be no assurance that forward looking statements will prove to be accurate, as actual results and future events could differ materially from those anticipated in such statements. All of the forward looking statements made in this presentation are qualified by these cautionary statements, and those made in our filings with the securities regulators of Canada and the U.S., including but not limited to those cautionary statements made in the “Risk Factors” section of our most recently filed Annual Information Form, the “Risk Analysis” section of our FYE 2021 Management’s Discussion and Analysis, and the “Cautionary Statement on Forward-Looking Information” in our news release dated July 27, 2022, to which readers are referred and which are incorporated by reference in this presentation, all of which qualify any and all forward-looking statements made in this presentation. These factors are not intended to represent a complete list of the factors that could affect Kinross. Kinross disclaims any intention or obligation to update or revise any forward-looking statements or to explain any material difference between subsequent actual events and such forward-looking statements, except to the extent required by applicable law.

Where we say “we”, “us”, “our”, the “Company”, or “Kinross” in this presentation, we mean Kinross Gold Corporation and/or one or more or all of its subsidiaries, as may be applicable.



We are proud to be working
in the traditional territory of the collective members
of the Anishinaabe Nation in Treaty #3

We and all of our contractors must recognize and
respect the inherent and treaty rights of our partners
in the Wabauskang and Lac Seul First Nations

We are committed to meaningful dialogue
with our partner First Nations and strive for
continued improvement in all that we do.

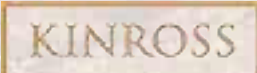
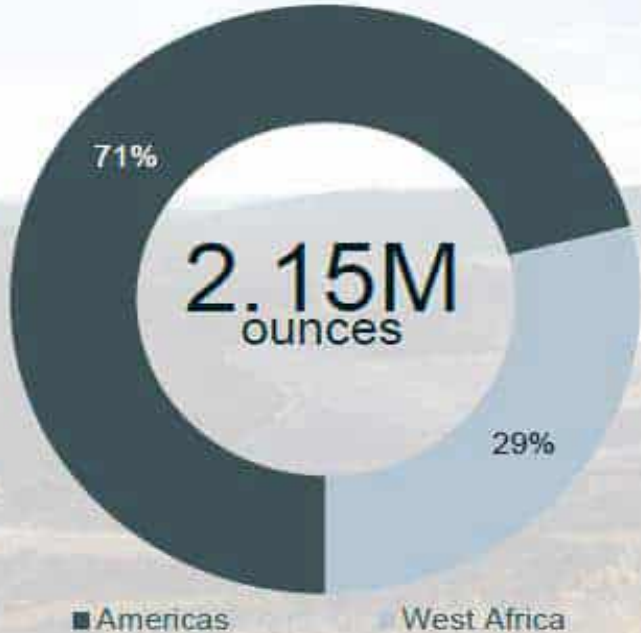


Agenda

1. Kinross Overview
2. Great Bear Project
 - A. Vision and Approach
 - B. Advanced Exploration Update
 - C. Federal Approval Process
3. Next Steps

Who is Kinross Gold?

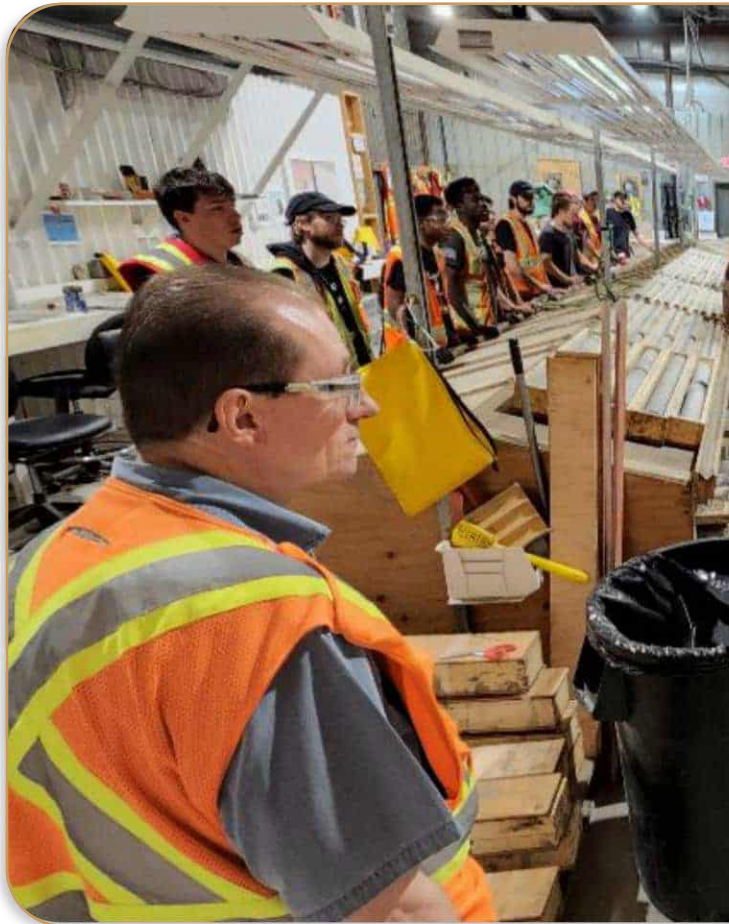
2022E Gold Equivalent Production^(1,2)



(1)(2)(3)(4) Refer to endnotes in this presentation

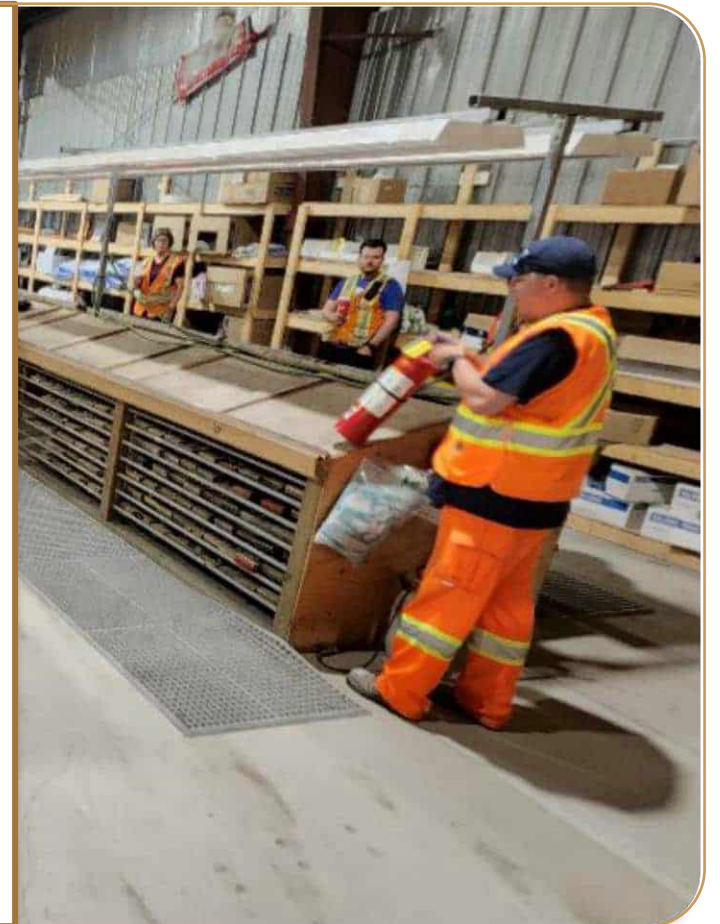
Committed to Operating Responsibly

Focus on prioritizing health and safety above all else



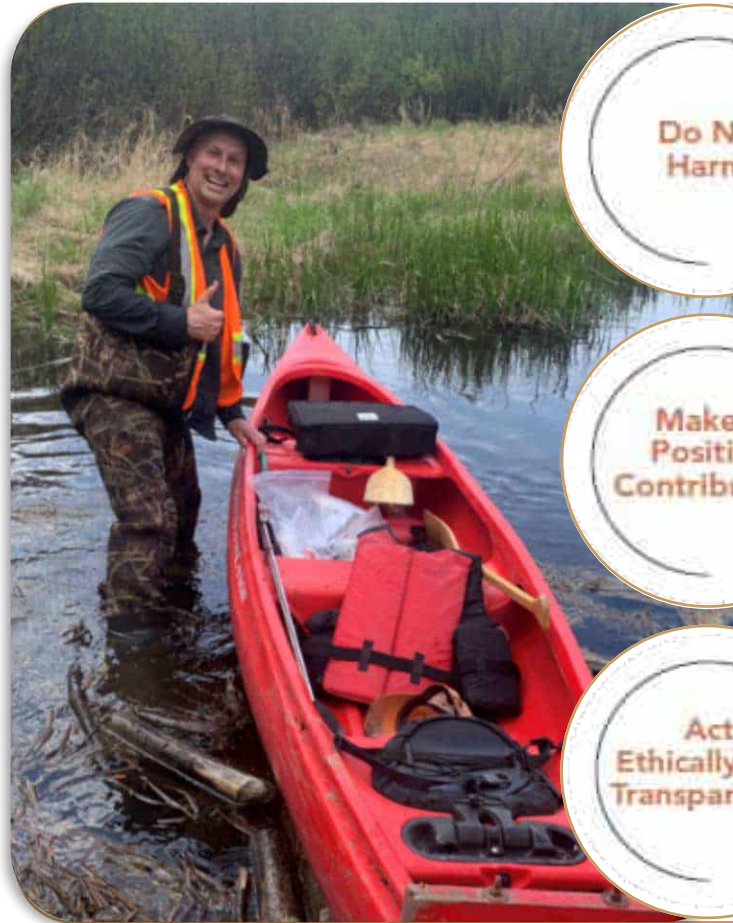
We value the health and safety of our workforce above all other priorities

We implement risk controls, training, and leadership to ensure a culture of safe work at all sites at all times



Committed to Operating Responsibly

Our approach to sustainability



Do No
Harm

We work to protect our workforce, environment and host communities from negative impacts

Make a
Positive
Contribution

We aim to provide meaningful livelihoods for employees, opportunities for suppliers and improvements in our host communities

Act
Ethically and
Transparently

We operate with respect for human rights and we engage with our stakeholders

Continuous Improvement

We strive to improve our approach to corporate responsibility practices

Our Vision for Great Bear

Strong Partnerships

With local Indigenous communities, rightsholders, and communities in which we operate



Long Life OP & UG Mine

Estimated production of ~300 – 500 koz per year



Low Emissions Mine

Via electrification and clean Ontario grid power



Local Employment

700 – 1,000 potential direct jobs created



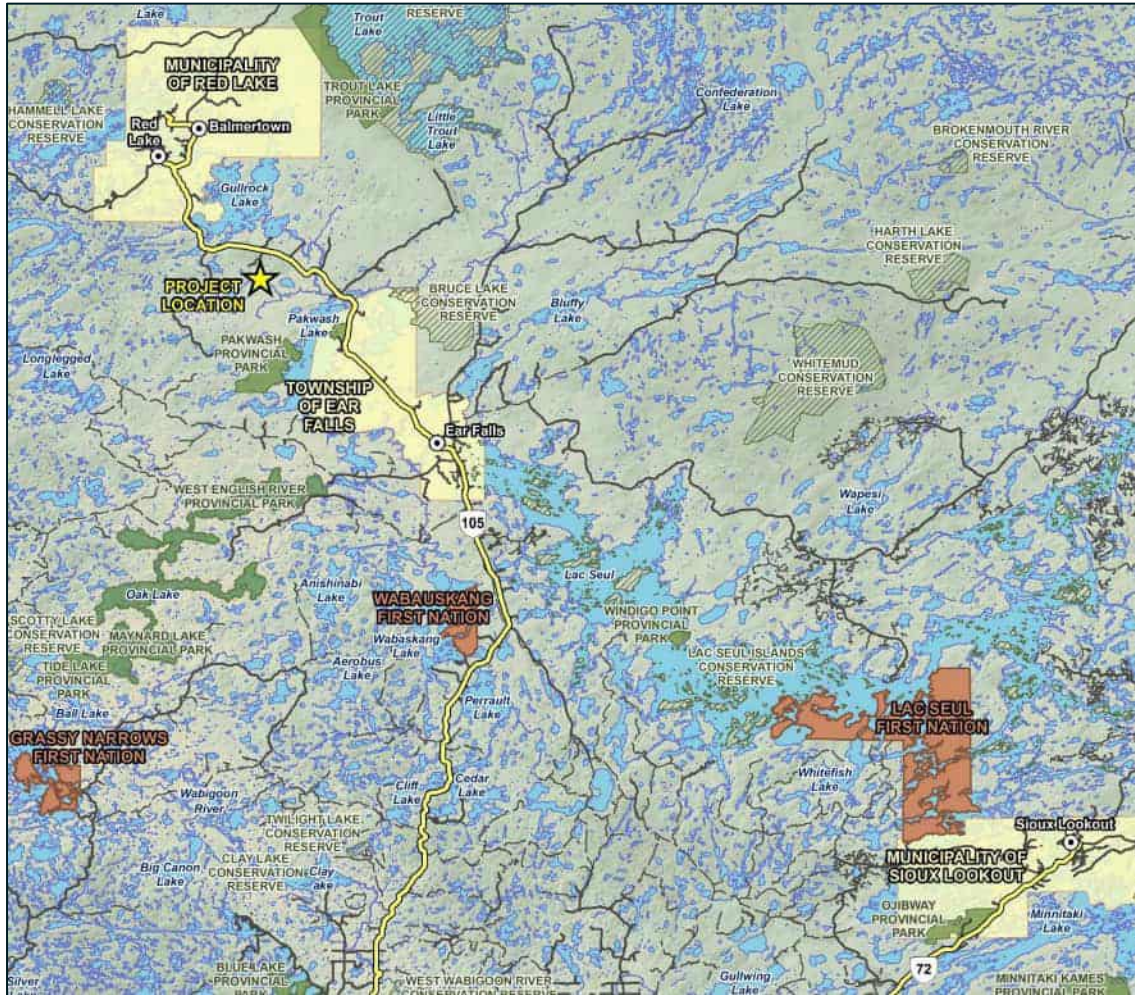
Best in Class Mine

Driven by workforce skill, design, efficiency and automation



Creating a Lasting Legacy in Red Lake, Ontario

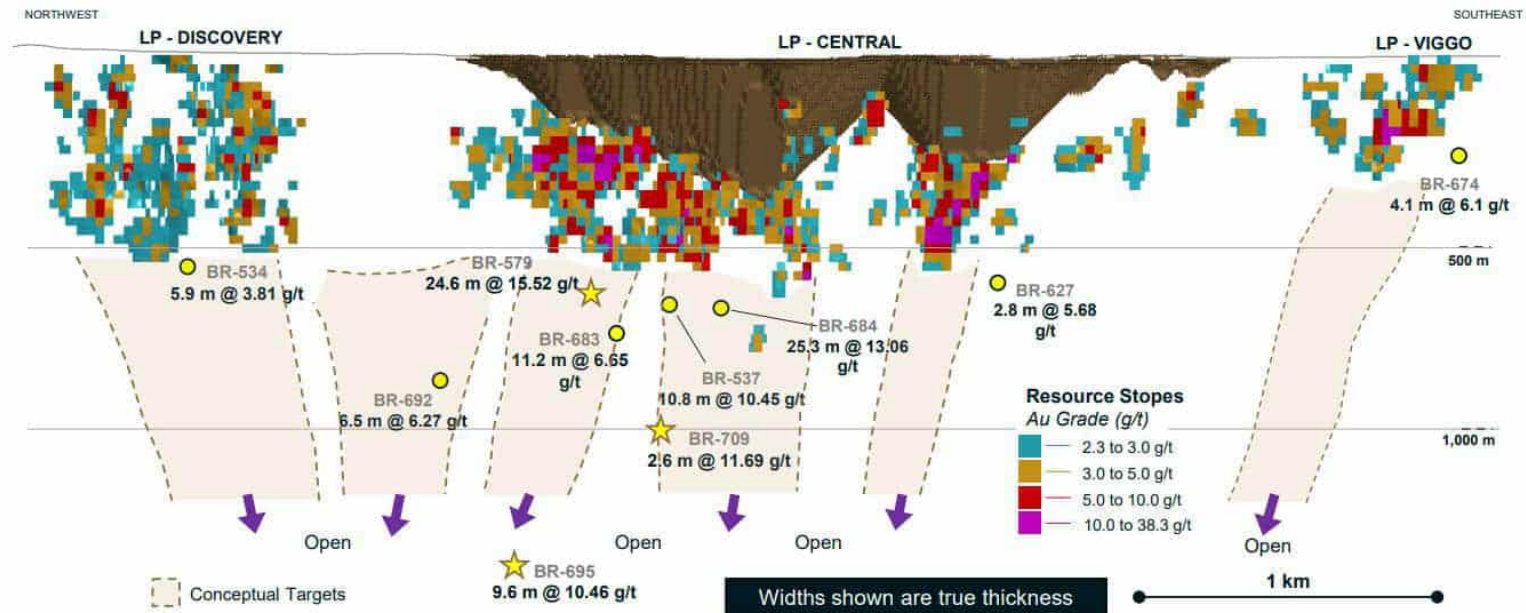
Location and Key Infrastructure



- Greenfield site with active forestry, mineral exploration and aggregate activities
- Well-connected to local infrastructure:
 - Highway 105
 - Enbridge Gas Pipeline
 - Existing 115 kV transmission line
- Located in Chukuni River watershed (flows into Pakwash Lake and English River)

Overall Mine Plan

- Planned open pit and underground mine operating in parallel for first ~10 years
- Onsite processing rate will be approximately 10,000 average tonnes per day
- Drilling to date is focused on the top ~700 meters. Deep drilling to ~1,200m has confirmed continuity at depth.
- Mainly gold in resource with no other major byproduct metals
- Planning for grid power supply, with natural gas generation bridging if line upgrade / expansion not ready when required by the project



Initial resource estimate for the Great Bear gold project has 5Moz (MI&I) of high grade mineralization

We continue to drill with continued positive results at depth

BUILDING A LEGACY IN RED LAKE, ONTARIO

Advanced Exploration

KINROSS

Overview and Approach

- The purpose of Advanced Exploration is to obtain additional information on:
 - Mineralized zones through underground drilling
 - Extract a bulk ore sample of up to 60,000 tonnes by underground mining methods
- Extracted ore will be transported up an underground ramp to surface by truck for crushing, sorting and sampling. Samples will be transported by truck to a to be determined test facility off site
- Excavated mine rock will also be trucked to surface and stored in stockpiles
- Testing provides a better understanding of grade and metallurgical recoveries to support a viable commercial production scenario

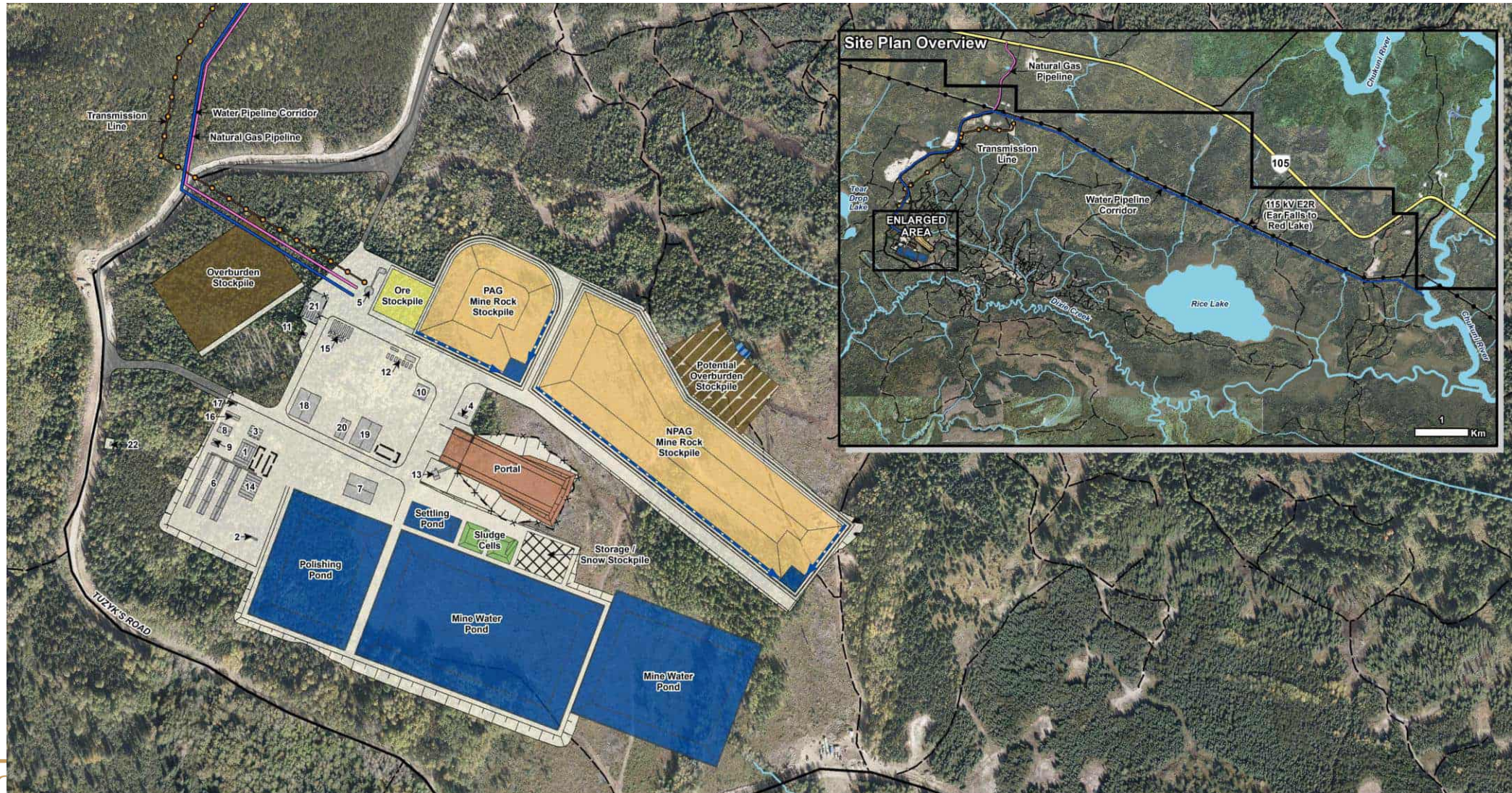


Community Led Technical Review and Participation

- Both Lac Seul First Nation and Wabauskang First Nation have been an active participants in baseline activities, inspections, and technical reviews on draft applications tied to permitting needs
 - Technical reviews have been led by Dillion/SOAR, and Sapo'nuk Sustainability, with input and guidance from community staff and leadership
 - An Environmental Management Committee has been formed to help review work, and ensure community input going forward
- Kinross has provided notice of upcoming business/procurement opportunities, employment, and has provided training to Lac Seul and Wabauskang staff working on the Project
- Kinross continues to engage with the community of Grassy Narrows First Nation



Advanced Exploration – General Arrangement



Advanced Exploration Features and Overview

Area	Design	Justification
Twin Declines	<ul style="list-style-type: none"> Twin portals and ramps 	<ul style="list-style-type: none"> Safety is first priority at Kinross. Show this by Safety in Design Creating secondary egress from Day 1
Underground Development	<ul style="list-style-type: none"> ~9,000 m of development to access the deposit. Incl. ventilation, utilities, dewatering, etc. 	<ul style="list-style-type: none"> 3 deposits targeted (LP, Hinge and Limb) Need to get down to >600m vertical depth to drill deeper sections of the deposit more efficiently
Power	<ul style="list-style-type: none"> Natural gas power generation for start up of activities. Transition to grid power during AEX program if possible Diesel generation is for backup and the construction stage 	<ul style="list-style-type: none"> Power connection timelines uncertain. Transition when possible
Camp	<ul style="list-style-type: none"> 100 person camp on property 	<ul style="list-style-type: none"> Temporary influx of personnel into region Limits fatigue as camp nearby and provides personnel oversight
Rock – Mine Rock Management	<ul style="list-style-type: none"> Separate PAG and NAG storage Return PAG underground at closure Sampling programing during AEX 	<ul style="list-style-type: none"> Best mine rock management practices Potential re-use of NAG for aggregate or construction
Water Treatment	<ul style="list-style-type: none"> Robust water treatment design 	<ul style="list-style-type: none"> Striving for high-standard of water treatment and management. Priority for Kinross
Water Management	<ul style="list-style-type: none"> Collection of all runoff with appropriate treatment and storage 	<ul style="list-style-type: none"> Water management is critical to project and Kinross
Effluent Discharge	<ul style="list-style-type: none"> Chukuni river via pipeline (potentially to Dixie Creek at start) 	<ul style="list-style-type: none"> Water will be treated prior to discharge and all regulatory requirements will be met (water quality and flows)

Advanced Exploration Permits

Agency	Permit	Comments
Ministry of Mines	Closure Plan (Final Filing)	<ul style="list-style-type: none"> A written plan on how the site will be rehabilitated Financial assurance required prior to construction start
Ministry of Environment and Parks	Class EA Temporary Power (construction)	<ul style="list-style-type: none"> Required for temporary diesel power between 1 < 5 MW during the construction phase of the AEX project. Assess the operation of diesel generator and identifies mitigation measures
	Environmental Compliance Approval (ECA) Air (Operations)	<ul style="list-style-type: none"> Required for air emissions related to all activities for AEX including noise for AEX Operations
	Permit to Take Water (PTTW) Underground and Surface	<ul style="list-style-type: none"> Required for all water taking and or transfers. Includes underground dewatering and construction front activities that require the movement of water. Required to initiate AEX footprint construction activities
	ECA Industrial Water Management	<ul style="list-style-type: none"> Required to manage and discharge treated water back to the environment. All water that flows through or on the site will need to be collected and treated prior to discharging to the environment. Required to initiate AEX footprint construction activities
Ministry of Natural Resources and Forestry	Crown Resource Class EA Screening	<ul style="list-style-type: none"> Required to assess the potential impacts of timber clearing activities.
	Forestry Resource License	<ul style="list-style-type: none"> Required to remove any timber from crown land, obtained after the Class EA Screening is complete
	Land Use Permits	<ul style="list-style-type: none"> Required for any activity on Crown land that has not been brought to lease. A large section of the WTP effluent pipeline is anticipated to be on crown land. A portion of the Natural Gas pipeline may also require a land use permit for AEX

BUILDING A LEGACY IN RED LAKE, ONTARIO



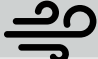









Main Project Impact Assessment

KINROSS

Current Status – Planning Phase (Phase 1)

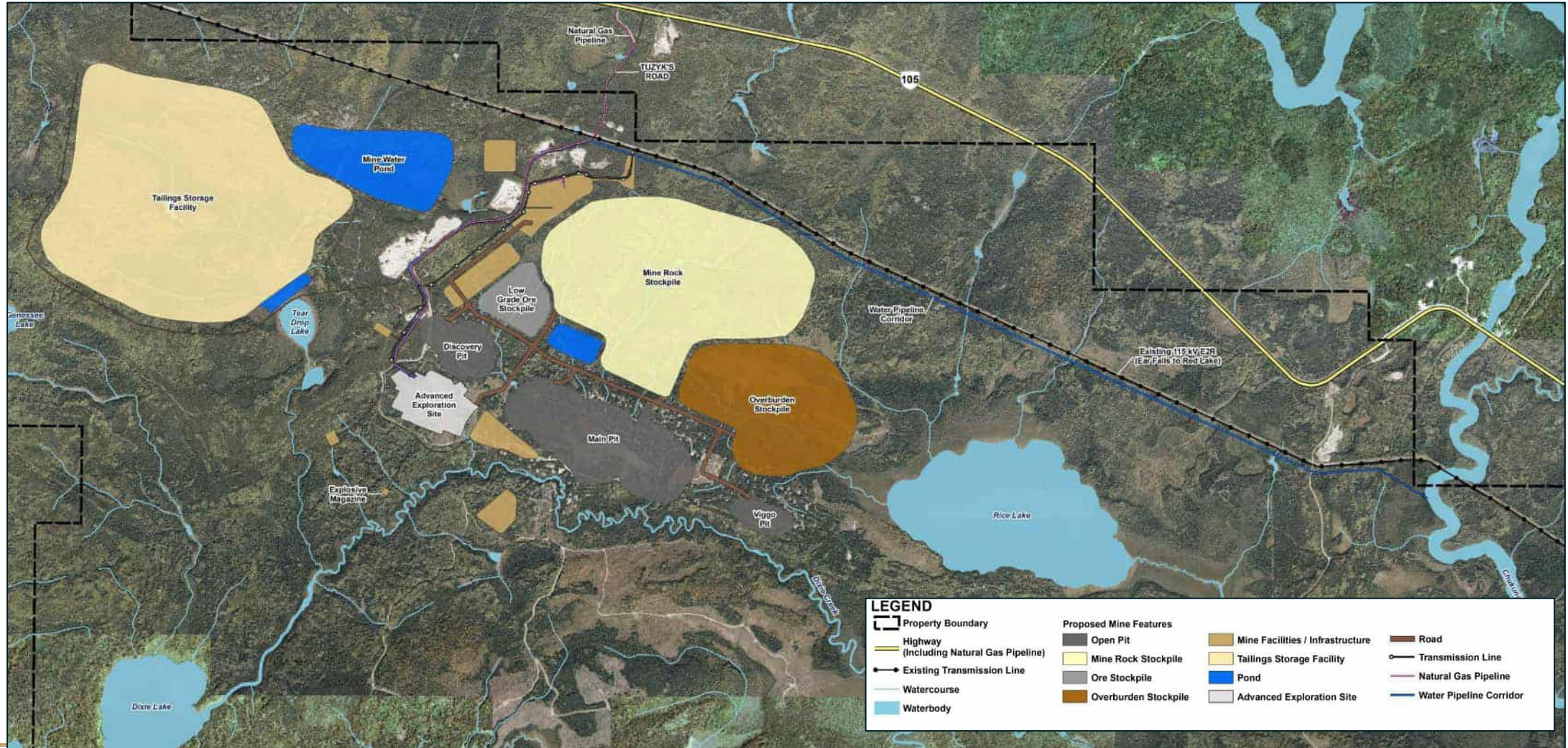
- Objective of Phase 1:
 - Identify issues of importance to communities including opportunities for collaboration and cooperation. Identify pathways to set the stage for meaningful engagement and consultation throughout the process
 - Formally determine whether an impact assessment is required and receive tailored Impact Statement Guidelines
 - Plan the Impact Assessment and prepare plans that establish the process for participants
- What's Next:
 - The Agency will have posted the Initial Project Description (IPD) for public and Indigenous review (August 17, 2023)
 - The Agency has compiled a Summary of Issues detailing concerns they have heard during their engagement
 - Kinross will respond to those issues in a Detailed Project Description (DPD) – IAAC target is within 30 days of receipt of the Summary of Issues, and following concordance the Agency will make a determination as to whether an impact assessment is required after accepting the DPD.
 - The Agency develops a number of planning documents, and the assessment will move to Phase 2 (preparation of the Impact Statement). Phase 2 officially begins with the Agency posting a Notice of Commencement

Baseline Studies

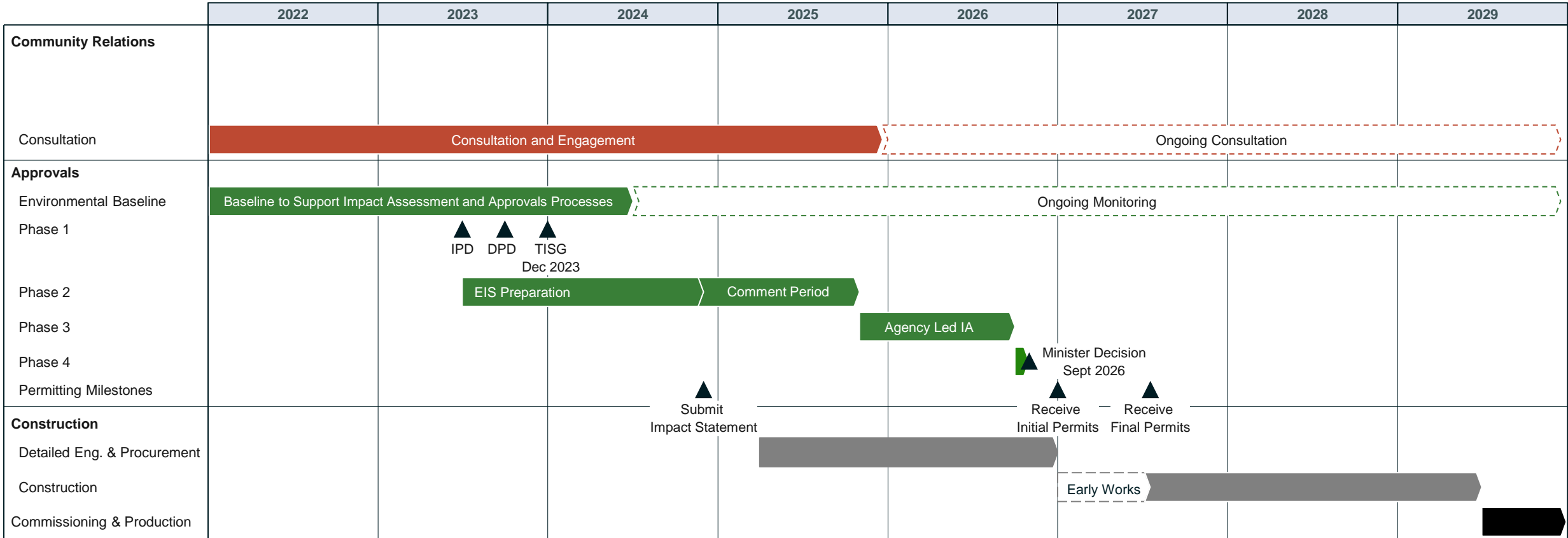
<p>Aquatics</p>  <p>Multi-season assessments of Fish habitat and community sampling Habitat mapping Containment in fish tissue sampling Lower trophic level periphyton sampling Benthic Invertebrate and sediment quality sampling</p>	<p>Noise and Vibration</p>  <p>Noise and vibration monitored at 4 monitoring stations around the project area Surveys taken when leaves are on the trees and While leaves are off</p>	<p>Air Quality</p>  <p>3 Ambient Air Stations monitoring: Hi-Vol SP/Metals PAH Hi-Vol Real-time PM10 and PM2.5 Discrete PM10/Silica Discrete PM2.6 Dustfall Real-time NO2 and SO2 Passive VOCs DPM Weather</p>	<p>Light</p>  <p>Monthly Light measurements taken at 4 locations with a light meter and sky quality meter</p>	<p>Hydrogeology</p>  <p>Monthly water levels from 56 groundwater wells across the project area to understand the movement of groundwater</p>	<p>Hydrology</p>  <p>11 hydrometric stations used to characterize baseline water flow regime and Understand seasonal behavior of watercourses in and around the project site</p>	<p>Terrestrial</p>  <p>Multi-seasonal surveys in and around the project area including Significant wildlife habitat surveys Aerial surveys Trail camera monitoring Acoustic monitoring for bats Bird assessments and waterfowl surveys Acoustic monitoring for amphibians Rare plant surveys Preliminary wetland mapping</p>	<p>Water Quality</p>  <p>25 surface water locations Sampled monthly and quarterly Including Low level mercury sampling & 56 groundwater wells sampled 3 times throughout the year to capture seasonal variations</p>	<p>Geochemistry</p>  <p>Assessing the chemistry of rock through Mine Rock Static Testing Mine Rock Kinetic Testing Tailings Static testing Tailings Kinetic Testing Overburden Static Testing</p>	<p>Archaeology</p>  <p>2022 Stage 1 Completed Stage 2 Archaeological Assessment and Cultural Heritage Landscape evaluations in August 2023</p>	<p>Country /Traditional Foods</p>  <p>Measure concentrations of anticipated country foods and associated material Receive feedback from Indigenous communities on country foods harvesting and consumption Establish baseline of existing country foods quality on seasonal basis Analyses including metals, mercury, moisture content</p>	<p>Human Environment</p>  <p>Economic modelling Preliminary Human Health Risk Assessment Preliminary Visual Effects Assessment Coordination with both Indigenous and non-Indigenous communities Primary Effects Assessment report</p>
---	---	--	---	---	--	--	--	---	--	--	---



Main Project – General Arrangement



Timeline



KINROSS

Endnotes

- (1) Kinross' updated outlook represents forward-looking information and users are cautioned that actual results may vary. Please refer to the Cautionary Statement on Forward-Looking Information on slide 2 of this presentation.
- (2) Production guidance for 2022 expected to be at low end of the 2.15Moz +/-5% range.
- (3) Annual production level for "Operating Assets" represents gold equivalent production. Annual production level for "Development Projects" based on estimates of previously disclosed total life-of-mine production divided by total mine life.
- (4) Top tier defined as assets with Life of Mine (LOM) into the next decade and annual production averaging greater than 500koz and LOM AISC

BUILDING A LEGACY IN RED LAKE, ONTARIO

GREAT BEAR PROJECT

Proposed Open Pit and Underground Gold Mine

**Grand Council Treaty #3
Update and Information Session
August 30, 2024**

KINROSS

We are honored to be working

in the traditional territory of the collective members
of the Anishinaabe Nation in Treaty #3

**We and all our business partners recognize and
respect** the inherent and treaty rights of our partners in
Wabauskang First Nation and Lac Seul First Nation.

We are committed to meaningful dialogue
and working with Indigenous peoples, learning from
Indigenous Knowledge and applying those learnings to
our work across the organization.





NIBI

DECLARATION OF TREATY #3

NIBI (WATER) IS ALIVE AND HAS A SPIRIT. IT IS THE LIFE BLOOD OF OUR MOTHER (AKI) AND CONNECTS EVERYTHING. IT CAN GIVE, SUSTAIN AND TAKE LIFE.

NIBI CAN TAKE MANY FORMS INCLUDING SNOW, ICE, SPRING WATER, SALT WATER, RAIN, FRESH WATER, SWAMP WATER, AQUIFERS AND BIRTH WATER. EACH TYPE OF WATER HAS A ROLE TO PLAY IN OUR WELLNESS AND HEALING. NIBI IS CONNECTED TO OUR GRANDMOTHER, THE MOON.

EVEN THOUGH IT HAS SUFFERED, NIBI CONTINUES TO BRING FORWARD LIFE AND WE MUST WORK TO HEAL THE WATER AND OURSELVES.

NIBI HAS A SPIRIT AND SHARES ITS GIFT OF LIFE WITH ALL OF CREATION

Nibi has its own spirit. It cannot be owned or controlled. Nibi is shared across lands and territories, between people, with other nations and all other beings that are part of creation. Spirits and other beings in creation look after nibi and its wellbeing. Nibi and all beings and spirits that look after nibi must be feasted. All creation expresses love and respect for nibi through gestures of gratitude.

WE NEED NIBI IN ORDER TO LIVE A GOOD LIFE

All beings, including Anishinaabe, are born of nibi. We depend on nibi to live and our bodies are made of it. Nibi is the source of our wellbeing. It nourishes us, spiritually, physically, mentally and emotionally and provides cleansing and healing. Clean nibi for drinking is important to our health. We must respect our sacred relationship with nibi and all beings in creation to help protect nibi for our children and future generations.

WE ALL HAVE A SACRED RELATIONSHIP WITH NIBI

Anishinaabe have been responsible for the care of the aki (land) and nibi since time immemorial. Women have a sacred relationship with nibi and a special responsibility to look after nibi because they carry birth water and have the ability to bring life into this world. Men have a role to play to protect the land and support the wellbeing of nibi and ikwewag. Our relationship with nibi is preserved through ceremony, teachings, education and knowledge shared through generations.

NIBI UNITES US

Through its flow and movement, nibi cleanses itself and connects us all. It brings us together as families, communities, and as a nation. Traditional governance and law, including the Manito Aki Inakonigaawin and Treaty #3 confirm our collective responsibility to take action, give back and protect nibi and the environment for our children and future generations.



NIBI HAS A SPIRIT • NIBI IS LIFE • NIBI IS SACRED • WE HONOUR RESPECT AND LOVE NIBI

We recognize and respect the importance of Nibi (water) to all creation.

We acknowledge our collective responsibility to protect Nibi today and for future generations.

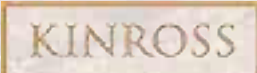
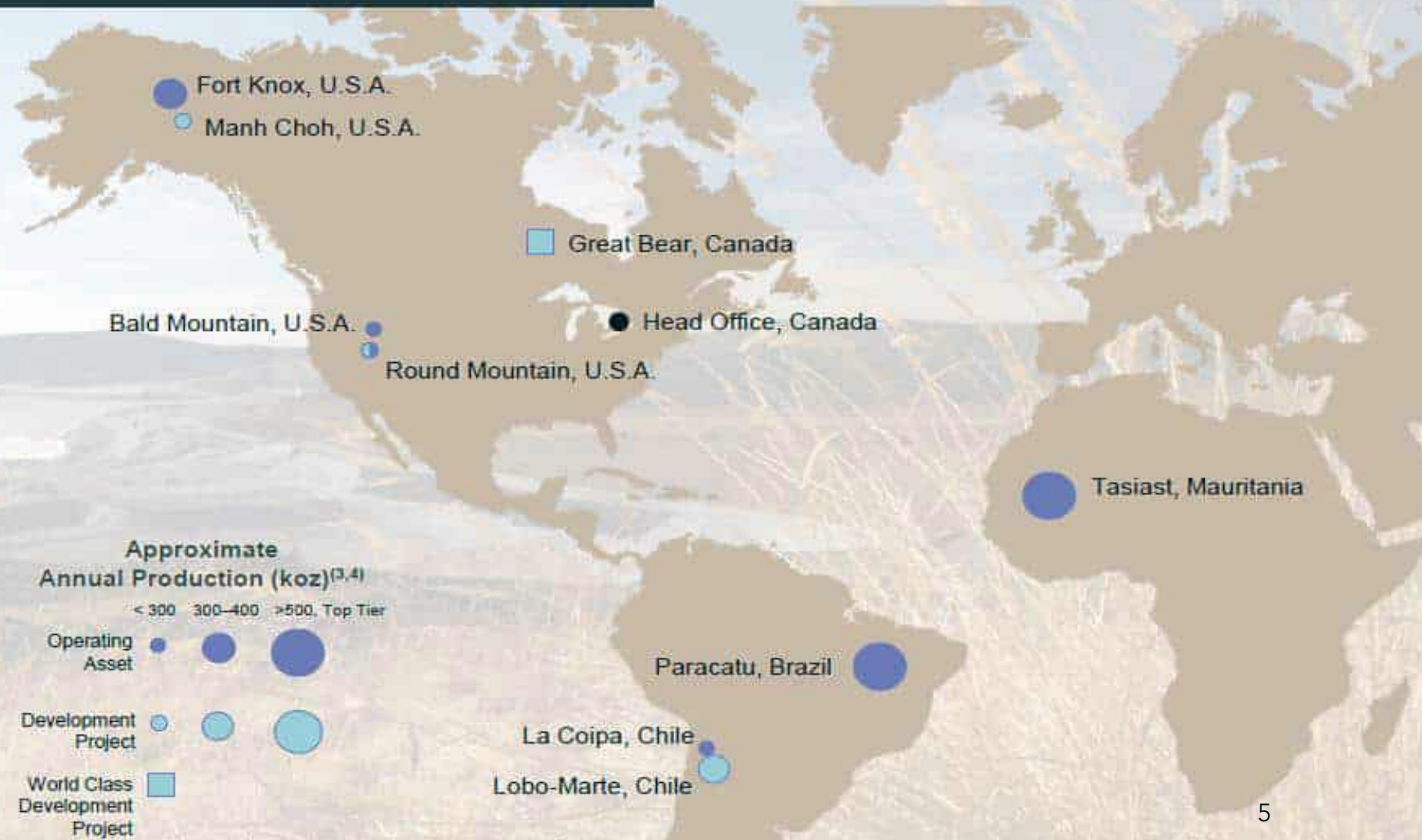
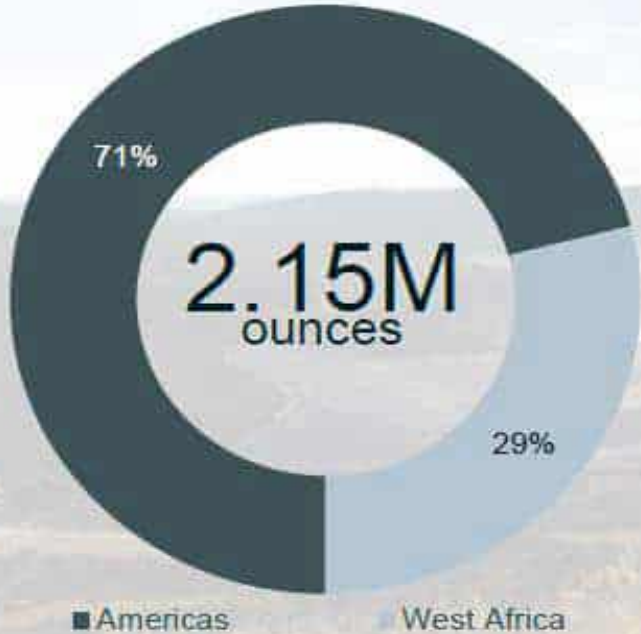
Agenda

1. Great Bear Project
 - A. Who is Kinross, Vision and Our Team
 - B. Location
 - C. Status Update
 - D. Resource Update
2. Advanced Exploration
 - A. Construction Environmental Management Plan
3. Federal Approvals
 - A. What is an Impact Statement?
 - B. Methodology and Alternatives
 - C. Site Layout and Update
4. Next Steps and Timeline



Who is Kinross Gold?

2022E Gold Equivalent Production^(1,2)



(1)(2)(3)(4) Refer to endnotes in this presentation

Our Vision for Great Bear

Strong Partnerships

With local Indigenous communities, rightsholders, and communities in which we operate



Long Life OP & UG Mine

Estimated production of ~300 - 500 koz per year



Low Emissions Mine

Via electrification and clean Ontario grid power



Best in Class Mine

Driven by workforce skill, design, efficiency and automation



Local Employment

700 - 1,000 potential direct jobs created



Creating a Lasting Legacy in Red Lake, Ontario

Our Team



Ian Russell

Great Bear Resources
Site Manager



Aaron MacDonell

Director, Environmental Services



Ashley Moncrief

Environmental Manager



Debbie Coughlin

Human Resources Manager



Dylan Langille

Exploration Manager



Matthew De Cecco

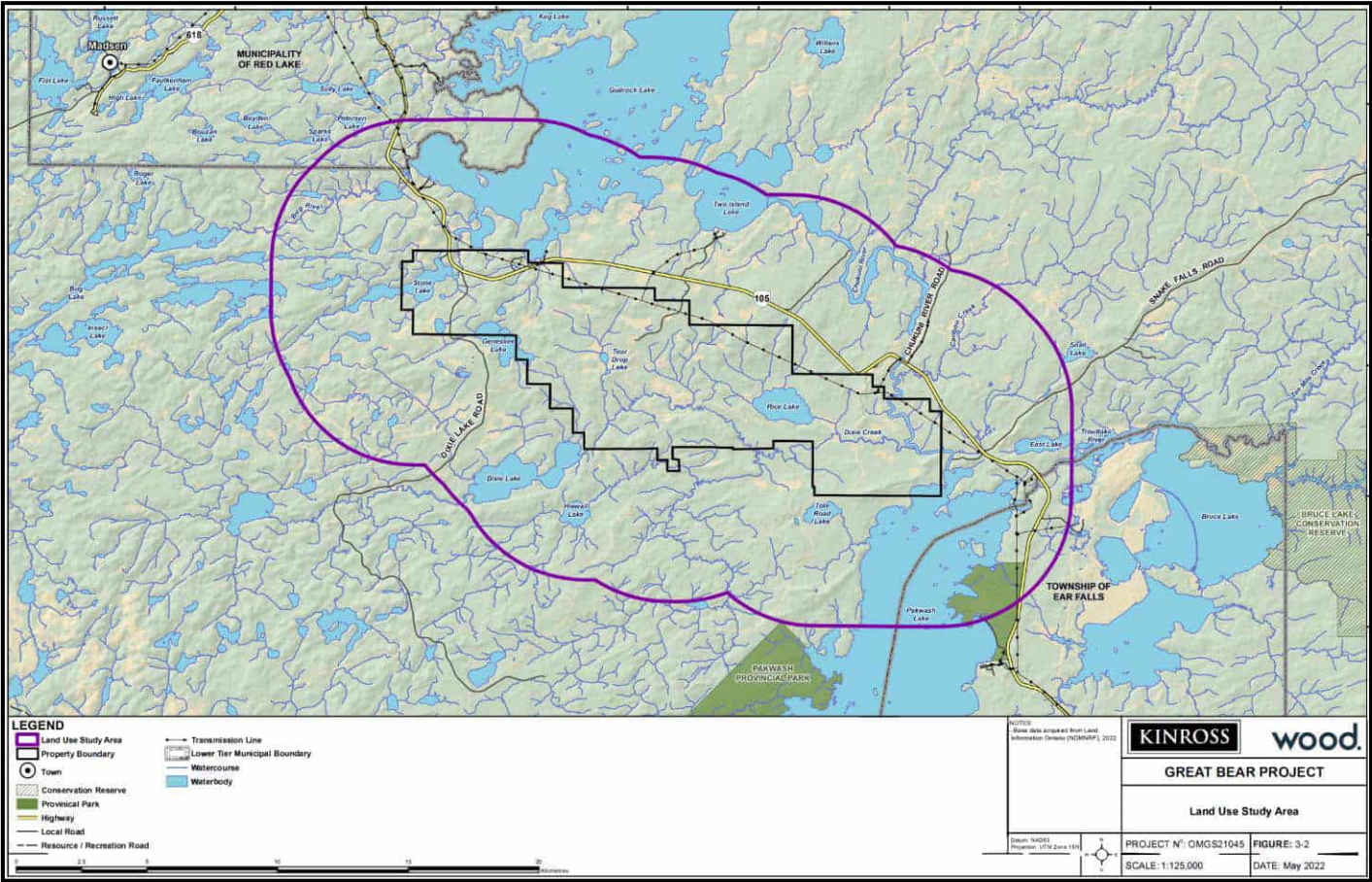
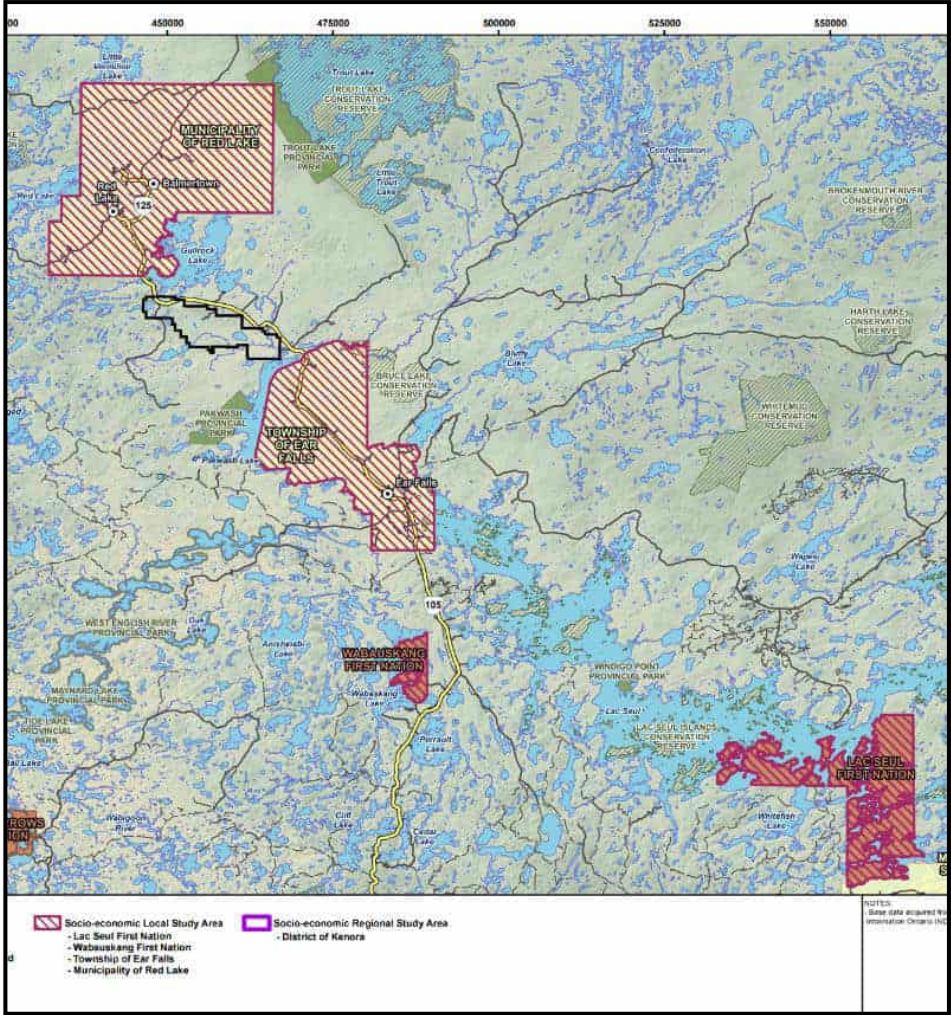
Advanced Exploration
Manager



Mac Potter

External Relations Manager

Location



Status Update - Work Underway

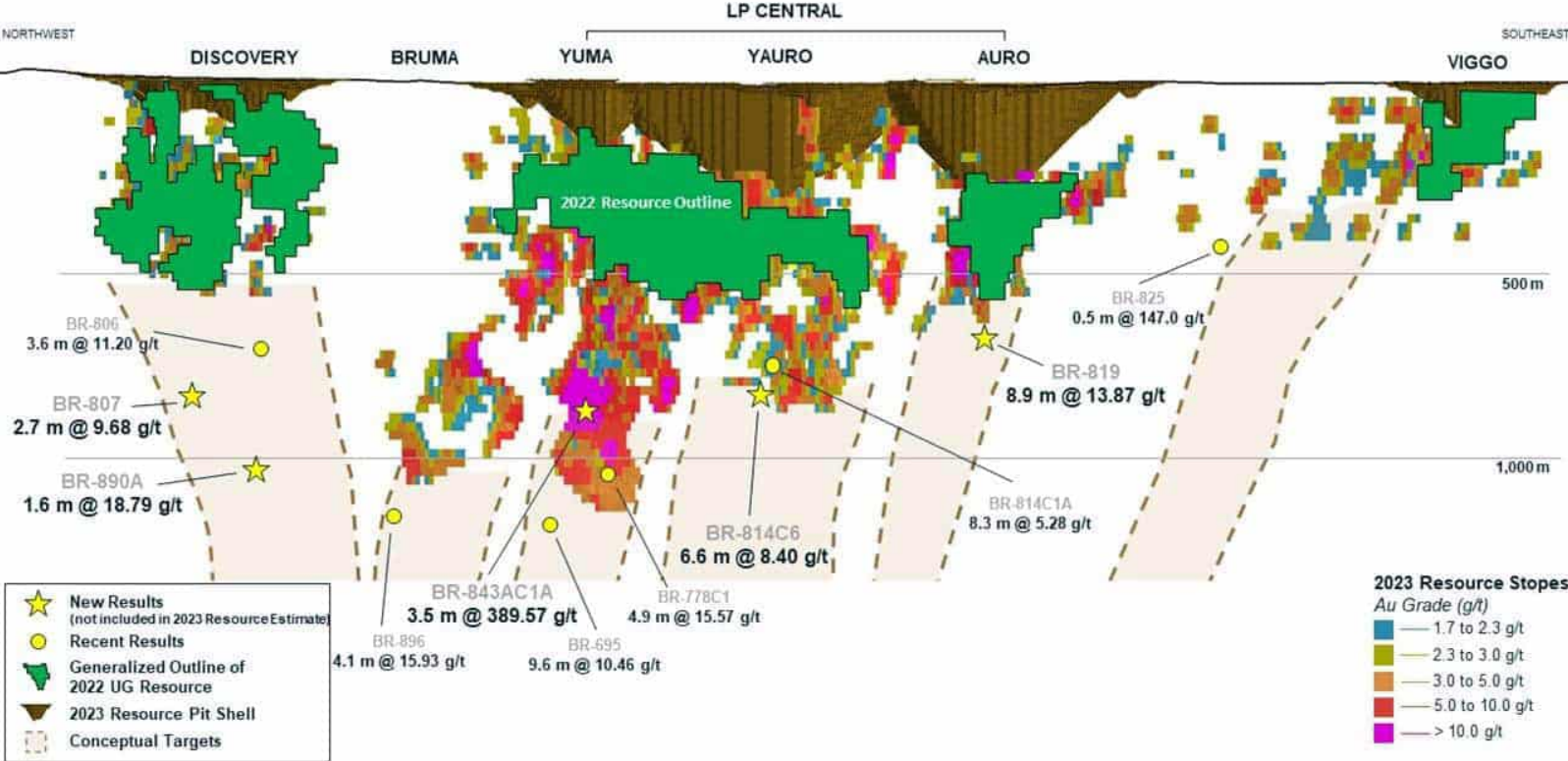
- Advanced Exploration efforts and permitting continue to advance for the Project. Permits are currently undergoing final review by the Provincial government. Review and preparation of these documents was completed by technical and supporting staff of WFN and LSFN, in addition to the joint WFN and LSFN Environmental Management Committee. ANA has also provided technical comments on all permits to date, and dialogue continues with the community.
- The EMC continues to meet monthly to review the implementation of the advanced exploration program, and the monitoring commitments made to date.
- Baseline environmental monitoring continues across the site, with supplemental monitoring planned for the Advanced Exploration Program.
 - Cumulative Effects Water Monitoring Program led by WFN and LSFN underway.
- Exploration efforts continue across the Great Bear site.



Elder Site Visit to the Great Bear Site on April 9th

Resource Update

- Following the completion of its 2023 drilling program, Kinross has increased Great Bear’s mineral resource estimate to approximately **2.8 Moz. of measured and indicated** resources and approximately **3.3 Moz. of inferred** resources.
- The year-over-year inferred resource estimate grew by 45%, adding more than one million ounces primarily driven by high-grade underground additions
- These results continue to support the view of a high-grade, large, long-life mining complex at Great Bear. A Preliminary Economic Assessment is in the final stages of development with release scheduled for September.



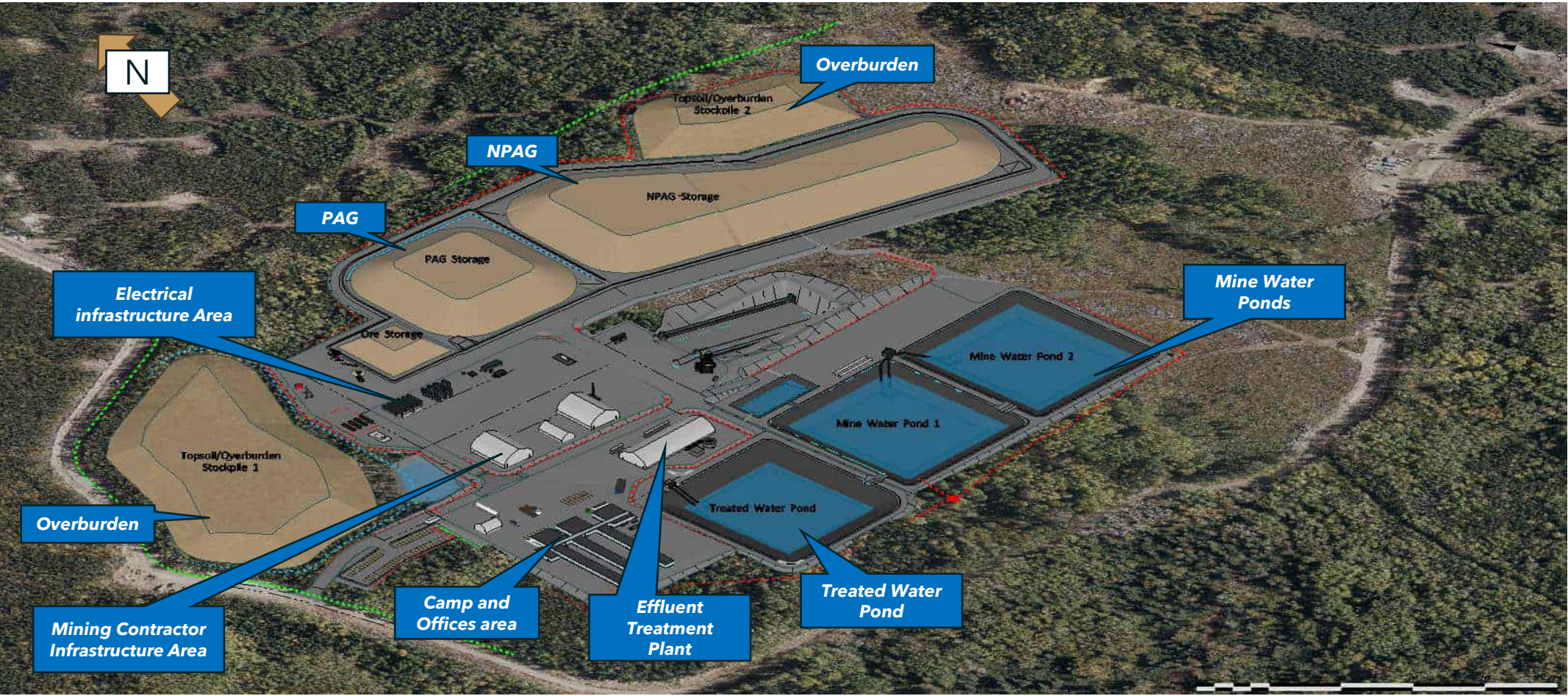
Advanced Exploration



Advanced Exploration Video Overview



Advanced Exploration Footprint



- The Advanced Exploration Footprint is under 1 km across

Construction Environmental Management Plan (CEMP)

A **Construction Environmental Management Plan (CEMP)** outlines the steps taken to minimize the environmental impact of a construction project.

It covers aspects such as managing dust, noise, water quality, waste, and other environmental risks.

1. Why is a CEMP Important?

1. **Environmental Protection:** A CEMP helps protect the environment and the people living near construction sites.
2. **Legal Compliance:** It ensures that construction projects adhere to environmental laws and regulations.

2. Benefits of Developing a CEMP:

1. **Reduced Environmental Impact:** A well-implemented CEMP minimizes air and water pollution, noise levels, and habitat disruption.
2. **Improved Compliance:** It ensures compliance with environmental standards, avoiding penalties.
3. **Cost Savings:** Effective environmental management reduces costs associated with noncompliance.
4. **Enhanced Reputation:** Demonstrating commitment to environmental responsibility improves the company's reputation

Components of CEMP

Project Overview

Environmental Assessment

Mitigation Measures

Monitoring and Reporting Procedures

Roles and Responsibilities

Communication and Record Keeping

Review and Revision Process

Environmental Management Plans

Emergency
Prevention and
Response Plan

Noise and Vibration
Management

Hazardous Materials
and Waste
Management Plan

Mine Rock
Management Plan

Water Management
Plan

Wildlife and
Vegetation
Management

Species at Risk
Mitigation Plan

Aquatic
Management Plan

Air Quality
Management Plan

Erosion and
Sediment Control
Plan

Chance Find
Procedure

Federal Approvals – Main Project



What is an Impact Statement?

- An Impact Statement is a detailed technical document prepared by Kinross as per the requirements set out in the Tailored Impact Statement Guidelines.
- The purpose of the Impact Statement is to identify and assess impacts of the project and the measures proposed to mitigate those effects.
- **Key Components of an Impact Statement**
 - Communication with local, provincial, and federal government
 - Consultation, dialogue, and technical review with Indigenous communities
 - Evaluation of alternative methods and locations of Project features
 - The assessment of potential environmental, socio-economic, and human interactions with the Project

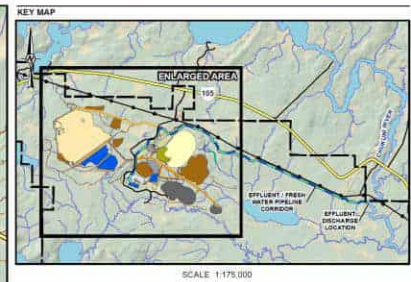
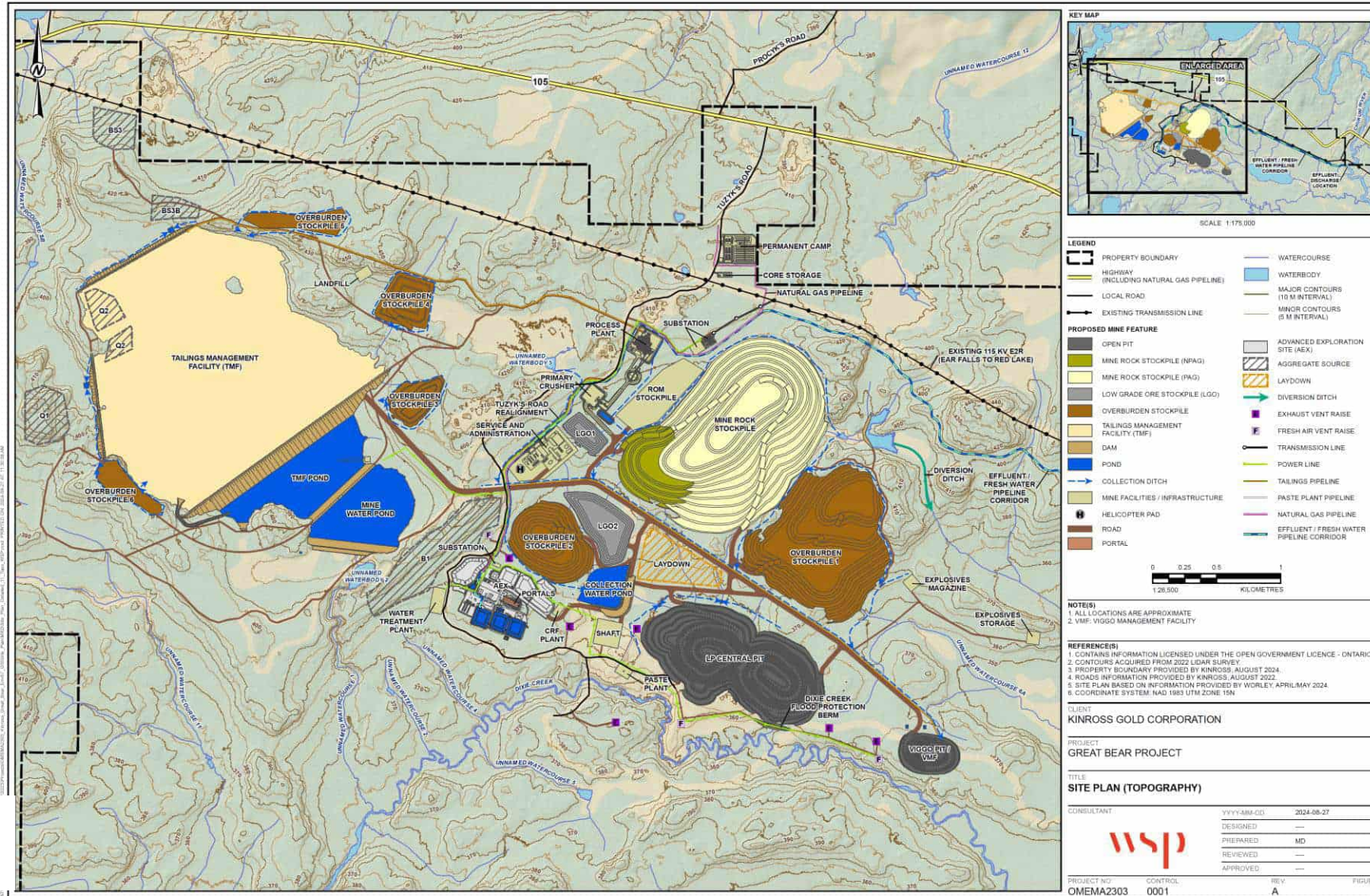


Methodology and Alternatives

- The Impact Assessment considers spatial and temporal boundaries. Separate study areas will be defined for valued components. Impacts to the biophysical environment will generally occur closer to the Project while human environment impacts may occur more broadly
- Determination of significant considers **magnitude, extent, timing, duration, frequency, reversibility, and likelihood** all these factors help Kinross determine if there is a potentially adverse impact as a result of the Project
- These factors aid us in selecting and identifying alternatives for the Project, we are required to describe the alternatives for the Project on key components that are technically and economically feasible. Alternatives under considerations include:

Mining and Processing	Tailings and Water Management	Surface Facilities	Workforce	Closure
<ul style="list-style-type: none"> • ore processing • mining methods • plant location • process plant effluent treatment technology 	<ul style="list-style-type: none"> • tailings storage facility technology • tailings management facility location • water treatment technology 	<ul style="list-style-type: none"> • overburden storage location • mine rock storage location • low-grade ore storage location 	<ul style="list-style-type: none"> • domestic sewage • landfill and waste management • workforce accommodations • power supply 	<ul style="list-style-type: none"> • Open pit closure • Demolition waste approach • Water management facilities closure • Tailings storage facility closure

Main Project Footprint



LEGEND	
[Symbol]	PROPERTY BOUNDARY
[Symbol]	HIGHWAY (INCLUDING NATURAL GAS PIPELINE)
[Symbol]	LOCAL ROAD
[Symbol]	EXISTING TRANSMISSION LINE
[Symbol]	WATERCOURSE
[Symbol]	WATERBODY
[Symbol]	MAJOR CONTOURS (10 M INTERVAL)
[Symbol]	MINOR CONTOURS (5 M INTERVAL)
PROPOSED MINE FEATURE	
[Symbol]	OPEN PIT
[Symbol]	MINE ROCK STOCKPILE (NPAG)
[Symbol]	MINE ROCK STOCKPILE (PAG)
[Symbol]	LOW GRADE ORE STOCKPILE (LGO)
[Symbol]	OVERBURDEN STOCKPILE
[Symbol]	TAILINGS MANAGEMENT FACILITY (TMF)
[Symbol]	DAM
[Symbol]	POND
[Symbol]	COLLECTION DITCH
[Symbol]	MINE FACILITIES / INFRASTRUCTURE
[Symbol]	HELICOPTER PAD
[Symbol]	ROAD
[Symbol]	PORTAL
[Symbol]	ADVANCED EXPLORATION SITE (AEX)
[Symbol]	AGGREGATE SOURCE
[Symbol]	LAYDOWN
[Symbol]	DIVERSION DITCH
[Symbol]	EXHAUST VENT RAISE
[Symbol]	FRESH AIR VENT RAISE
[Symbol]	TRANSMISSION LINE
[Symbol]	POWER LINE
[Symbol]	TAILINGS PIPELINE
[Symbol]	PASTE PLANT PIPELINE
[Symbol]	NATURAL GAS PIPELINE
[Symbol]	EFFLUENT / FRESH WATER PIPELINE CORRIDOR

NOTES

1. ALL LOCATIONS ARE APPROXIMATE
2. VMF: VIGGO MANAGEMENT FACILITY

REFERENCE(S)

1. CONTAINS INFORMATION LICENSED UNDER THE OPEN GOVERNMENT LICENCE - ONTARIO
2. CONTOURS ACQUIRED FROM 2022 LIDAR SURVEY
3. PROPERTY BOUNDARY PROVIDED BY KINROSS, AUGUST 2024
4. ROADS INFORMATION PROVIDED BY KINROSS, AUGUST 2022
5. SITE PLAN BASED ON INFORMATION PROVIDED BY WORLEY, APRIL/MAY 2024
6. COORDINATE SYSTEM: NAD 1983 UTM, ZONE 18N

CLIENT	
KINROSS GOLD CORPORATION	
PROJECT	
GREAT BEAR PROJECT	
TITLE	
SITE PLAN (TOPOGRAPHY)	
CONSULTANT	YYYY-MM-DD 2024-08-27
DESIGNED	---
PREPARED	MD
REVIEWED	---
APPROVED	---
PROJECT NO.	CONTROL
OMEMA2303	0001
REV	A
FIGURE	1

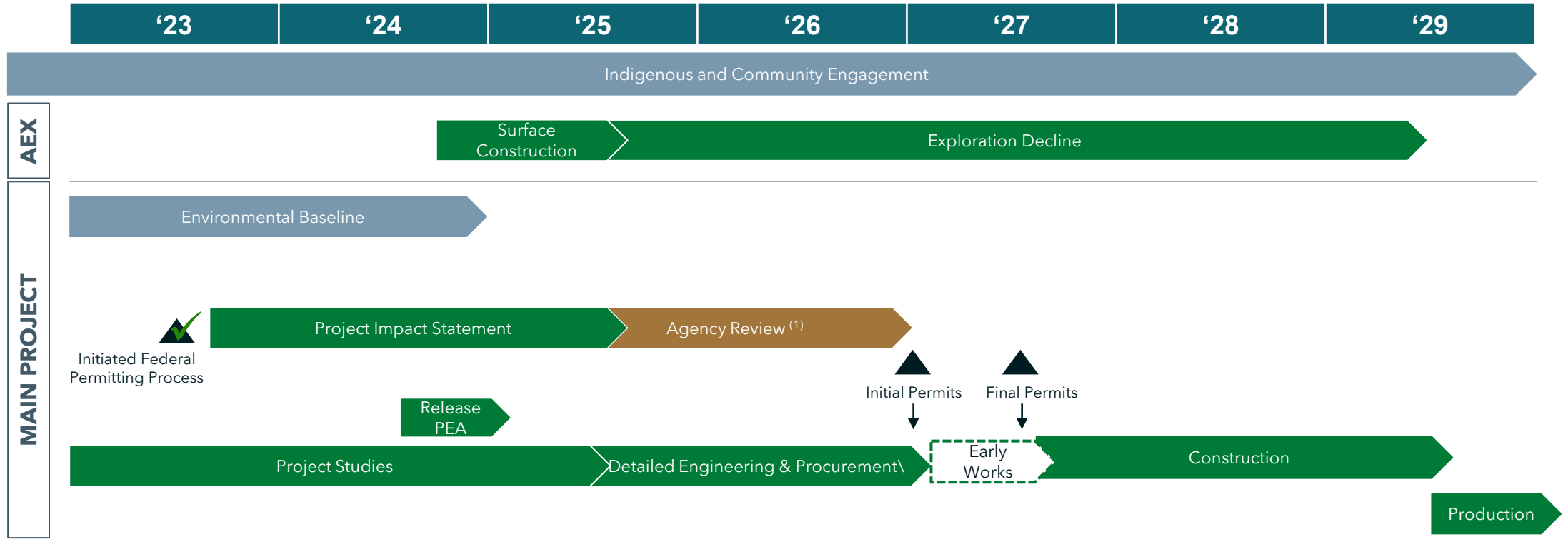
Other Key Features

- Camp is being designed to have ~600 room capacity that will be used for construction and remain for operations. Intent to have as many people as possible live locally in the communities of Red Lake and Ear Falls. AEX camp will continue to operate during the main project construction. Kinross Great Bear is currently developing an accommodation strategy to meet this challenge.
- Kinross continues to evaluate all options related to water management and treatment for the Project. Our team is planning for water treatment system from 2029+ that meets the Chukuni River receiver discharge criteria. All contact water site-wide will be collected and treated, with key focus on using gravity drainage to improve operational efficiency.
- Ultimately, the project is projected to generate significant local employment of between 700 and 1000 jobs over the next 20+ years.

Next Steps

- Advanced Exploration approvals are under final review by the Provincial Crown. The joint WFN and LSFN Environmental Management Committee is supporting the review of the implementation of the advanced exploration program, and the monitoring commitments made to date.
- Great Bear expects we will receive our Tailored Impact Statement Guidelines following public and Indigenous consultation on August 1, 2024, these guidelines in parallel with the ALIA will guide the Impact Assessment process.
- Our team is continuing ongoing dialogue with the communities of WFN, LSFN, and ANA on their participation and development of the Impact Statement.
- Future meeting topics include **fisheries compensation, water and tailings, closure, effects assessment, and accidents and malfunctions.**

Timeline



- Kinross Activities
- Baseline Study Requirements
- Government Activities

¹ Permitting timelines are estimated and subject to regulatory process, consultation, and engagement

KINROSS

Great Bear

Contact Info

Mac Potter

External Relations Manager, Great Bear

807.631.6002

greatbearinfo@kinross.com



KINROSS

BUILDING A LEGACY IN RED LAKE, ONTARIO

GREAT BEAR PROJECT

Proposed Open Pit and Underground Gold Mine

**Grand Council Treaty 3
Project Update
September, 2025**

We are honored to be working in the traditional territory of the collective members of the Anishinaabe Nation of Treaty #3 and the Northwestern Ontario Métis Community.

We and all our business partners recognize and respect the inherent and treaty rights of our partners in Wabauskang First Nation and Lac Seul First Nation.

We are committed to meaningful dialogue and working with Indigenous peoples, learning from Indigenous Knowledge and applying those learnings to our work across the organization.





NIBI

DECLARATION OF TREATY #3

NIBI (WATER) IS ALIVE AND HAS A SPIRIT. IT IS THE LIFE BLOOD OF OUR MOTHER (AKI) AND CONNECTS EVERYTHING. IT CAN GIVE, SUSTAIN AND TAKE LIFE.

NIBI CAN TAKE MANY FORMS INCLUDING SNOW, ICE, SPRING WATER, SALT WATER, RAIN, FRESH WATER, SWAMP WATER, AQUIFERS AND BIRTH WATER. EACH TYPE OF WATER HAS A ROLE TO PLAY IN OUR WELLNESS AND HEALING. NIBI IS CONNECTED TO OUR GRANDMOTHER, THE MOON.

EVEN THOUGH IT HAS SUFFERED, NIBI CONTINUES TO BRING FORWARD LIFE AND WE MUST WORK TO HEAL THE WATER AND OURSELVES.

NIBI HAS A SPIRIT AND SHARES ITS GIFT OF LIFE WITH ALL OF CREATION

Nibi has its own spirit. It cannot be owned or controlled. Nibi is shared across lands and territories, between people, with other nations and all other beings that are part of creation. Spirits and other beings in creation look after nibi and its wellbeing. Nibi and all beings and spirits that look after nibi must be feasted. All creation expresses love and respect for nibi through gestures of gratitude.

WE NEED NIBI IN ORDER TO LIVE A GOOD LIFE

All beings, including Anishinaabe, are born of nibi. We depend on nibi to live and our bodies are made of it. Nibi is the source of our wellbeing. It nourishes us, spiritually, physically, mentally and emotionally and provides cleansing and healing. Clean nibi for drinking is important to our health. We must respect our sacred relationship with nibi and all beings in creation to help protect nibi for our children and future generations.

WE ALL HAVE A SACRED RELATIONSHIP WITH NIBI

Anishinaabe have been responsible for the care of the aki (land) and nibi since time immemorial. Women have a sacred relationship with nibi and a special responsibility to look after nibi because they carry birth water and have the ability to bring life into this world. Men have a role to play to protect the land and support the wellbeing of nibi and ikwewag. Our relationship with nibi is preserved through ceremony, teachings, education and knowledge shared through generations.

NIBI UNITES US

Through its flow and movement, nibi cleanses itself and connects us all. It brings us together as families, communities and as a nation. Traditional governance and law, including the Manito Aki Inakonigaawin and Treaty #3 confirm our collective responsibility to take action, give back and protect nibi and the environment for our children and future generations.



NIBI HAS A SPIRIT • NIBI IS LIFE • NIBI IS SACRED • WE HONOUR RESPECT AND LOVE NIBI

We recognize and respect the importance of **Nibi** (water) to all creation.

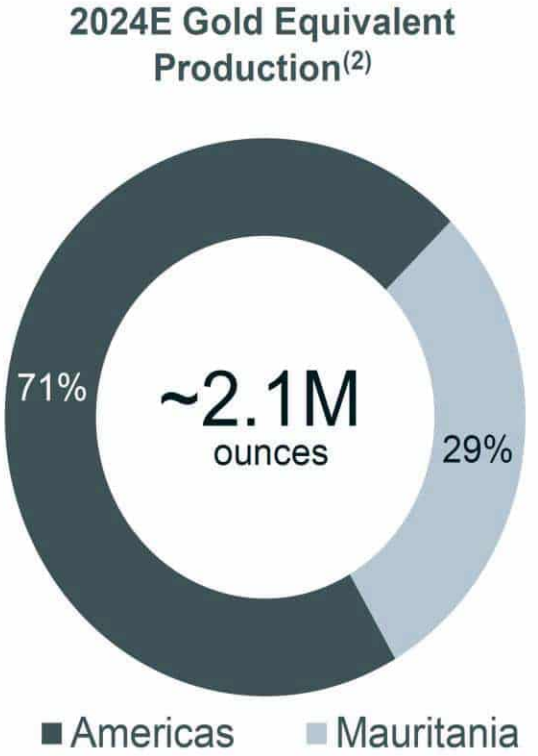
We acknowledge our collective responsibility to protect Nibi today and for future generations.

Agenda

1. Who is Kinross?
2. Location
3. Advanced Exploration
4. Main Project & Federal Permitting
5. Highlights
6. What we've heard
7. Next Steps



Who is Kinross Gold



Operations	●
Development Projects	●



(1) Top tier defined as assets with Life of Mine (LOM) into the next decade and annual production averaging greater than 500koz and LOM AISC <\$1000/oz (2024 nominal dollars)
 (2) Refer to endnote #1

Great Bear Team



Ian Russell
Site Manager



Aaron MacDonell
Director,
Environmental Services



Ashley Moncrief
Environmental Manager



Gwyneth Carlson
Sr. External Relations



Rod Bacon
Mining Liaison
Lac Seul First Nation



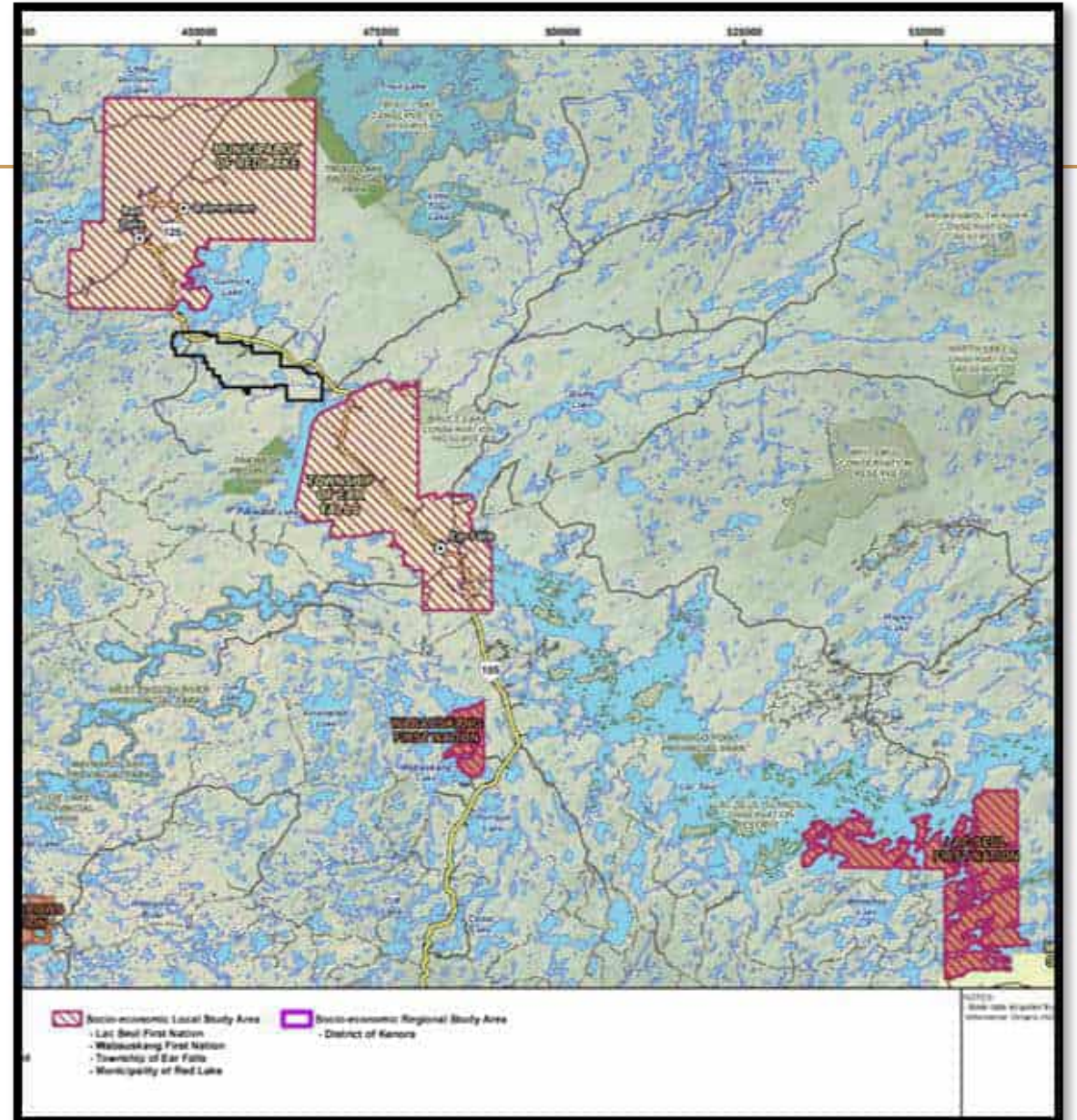
Anton Dodic
Environmental Liaison
Shared Spirits



Reggie Bacon
Mineral Development Advisor
Wabauskang First Nation

Great Bear Project - Location

- Located 25 km south of Red Lake and 45 km north of Ear Falls.
- Close proximity to Highway 105 & other necessary infrastructure.





Current Status and Work Ongoing

Advanced Exploration

- Great Bear is currently working on an Advanced Exploration Program, to allow drilling at depth.
- There continues to be delays in receiving key permits.
- Construction of the AEX site has progressed, inc. Blasting, excavation, site preparations, and key infrastructure.
- Key First Nations partnerships: Security, Camp, Earth Works, and UG Development.
- ETP Building, Chukuni pipeline ROW, Initiated installation of natural gas pipeline, substation and PTR.
- Kinross holds an Exploration Agreement with Lac Seul and Wabauskang First Nations, that outlines benefits for the Nations and guides the relationship.
- The Environmental Management Committee, made up of representatives from Lac Seul, Wabauskang, Shared Spirits, and Great Bear, meets monthly to collaboratively discuss environmental permits and plans.

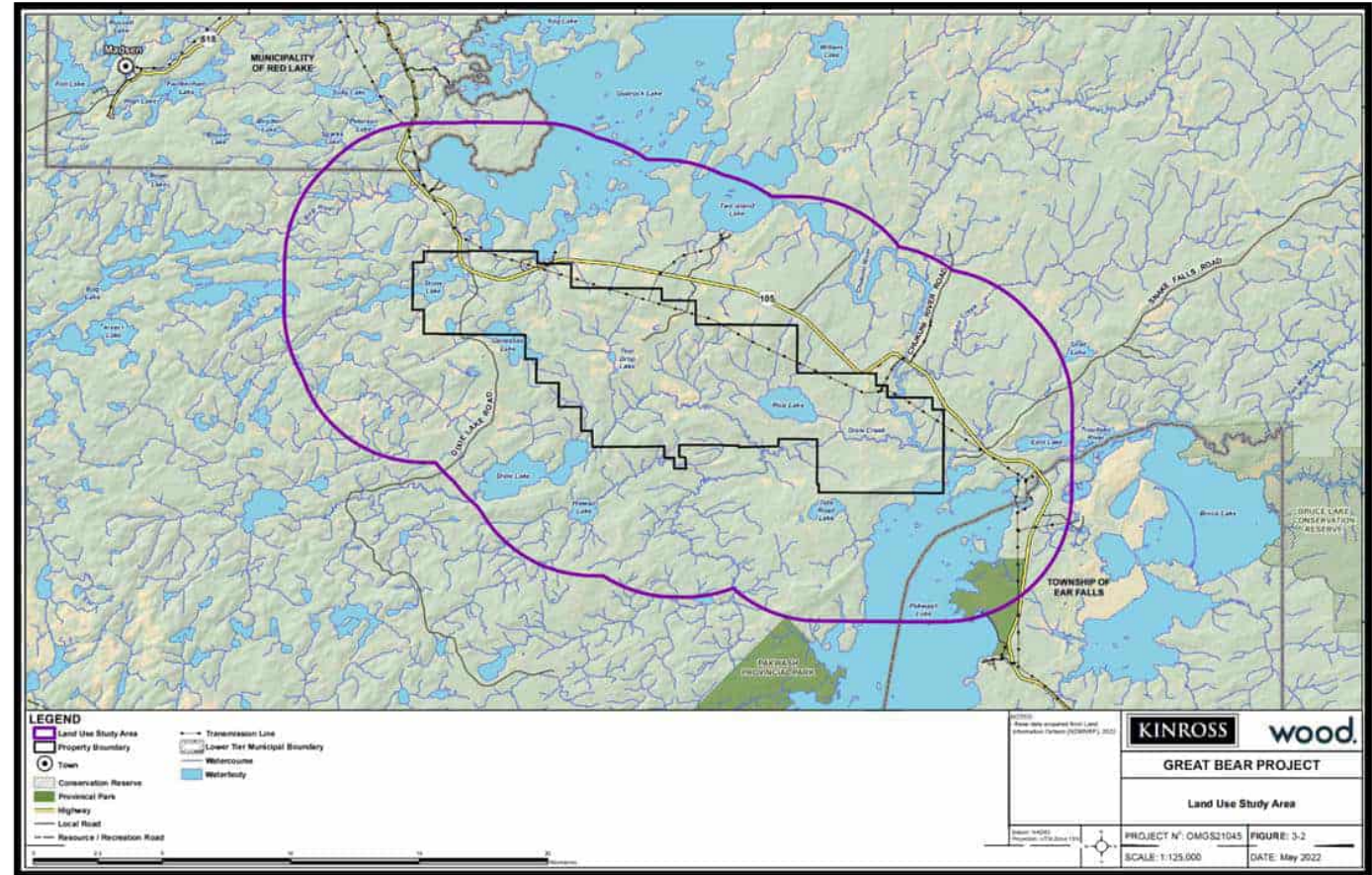




Main Mine Project - Federal Approvals

Baseline Data Collection

- Great Bear has undergone a comprehensive environmental baseline program for over 3 years, to understand existing conditions.
 - Atmospheric
 - Geochemistry
 - Hydrology
 - Hydrogeology
 - Surface Water Quality
 - Aquatic Ecology and Habitat
 - Terrestrial Ecology and Habitat
 - Socio-economic
- Establishing baseline conditions of an area allows for assessment of potential impacts from future development and/or activities. It serves as a reference point for measuring changes over time.
- The baseline data is used to develop monitoring plans, aid in making informed decisions on operating strategies, and allows for engagement with local communities.



Impact Statement & ALIA Process

- The Great Bear Project is proceeding through the Impact Assessment Process, assessing impacts: Environment, Social, Economic, Health, GBA+, and Indigenous peoples.
- Great Bear received our Tailored Impact Statement Guidelines on August 1, 2024, these guidelines provide the roadmap for the Impact Statement.
- The purpose of the Impact Statement is to identify and assess impacts of the project and the measures proposed to mitigate those effects.
- **We are preparing for a phased Impact Statement submission, beginning September 2025.**
- In parallel to this, Wabauskang and Lac Seul will be conducting a joint Anishinaabe-Led Impact Assessment which will support the Impact Statement.
- The ALIA is designed to assess the potential impacts of the proposed Great Bear Project from an Anishinaabe perspective, using traditional knowledge, community concerns and interests, and a seven generations lens.

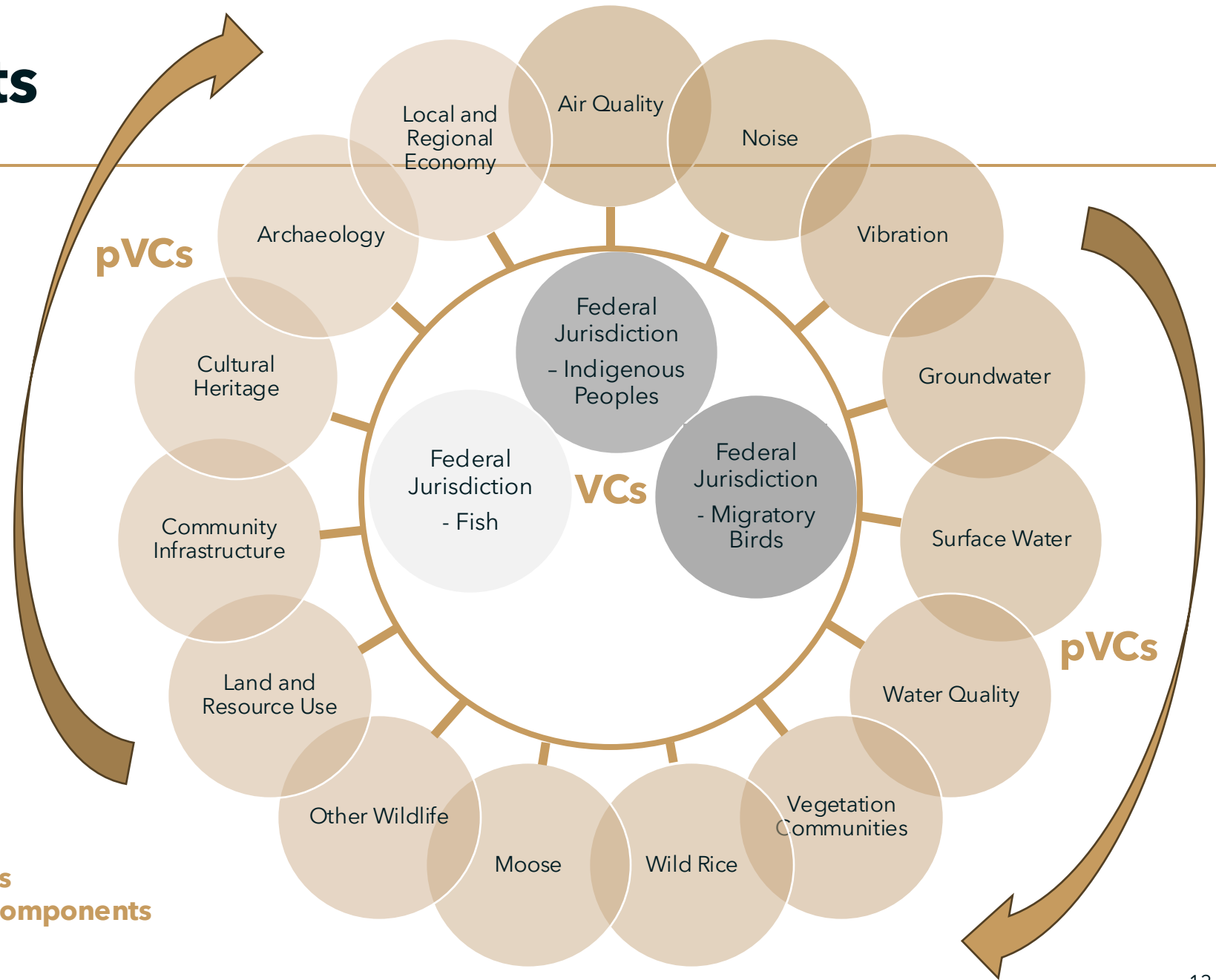


THE KEY PARTICIPANTS IN THE IMPACT ASSESSMENT SYSTEM ARE



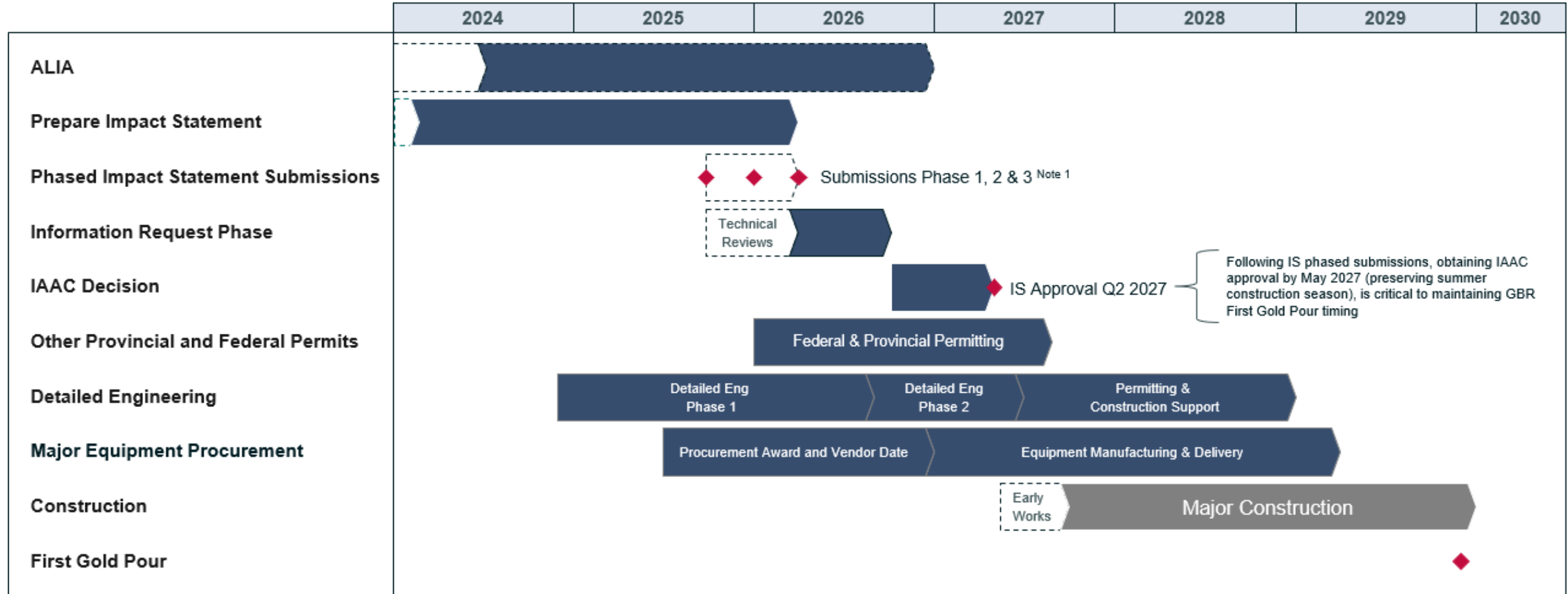
Valued Components

- **Valued Components** frame the assessment of the Project's potential impacts on both the biophysical and human environment with special attention given to aspects under Federal jurisdiction.
- **Pathway Valued Components** encompass a wide range of considerations, including terrestrial and aquatic ecology, water resources, vegetation, the physical environment, human well-being, community development, and Indigenous peoples.
- The Impact Assessment takes into consideration these pathways individually assessing while considering the implementation of avoidance and mitigation measures to reduce or eliminate any potential effects.



VCs: Valued Components
pVCs: Pathway Valued Components

Main Project Timeline



Note 1:

Submission 1 - Q3 2025 Introduction, Project Description, Environmental Setting, Alternative Assessment, Environmental Approval Framework and Requirements, Authors (6 Sections)

Submission 2 - Q4 2025 Effects Assessment Methodology, Analysis of Changes pVCs, Technical Appendixes, Changes to Fish Habitat, Changes to Migratory Birds, Supporting Appendixes (Dam Breach and Water Quality), Effects of the Environment, Summary of Benefits (7 Sections)

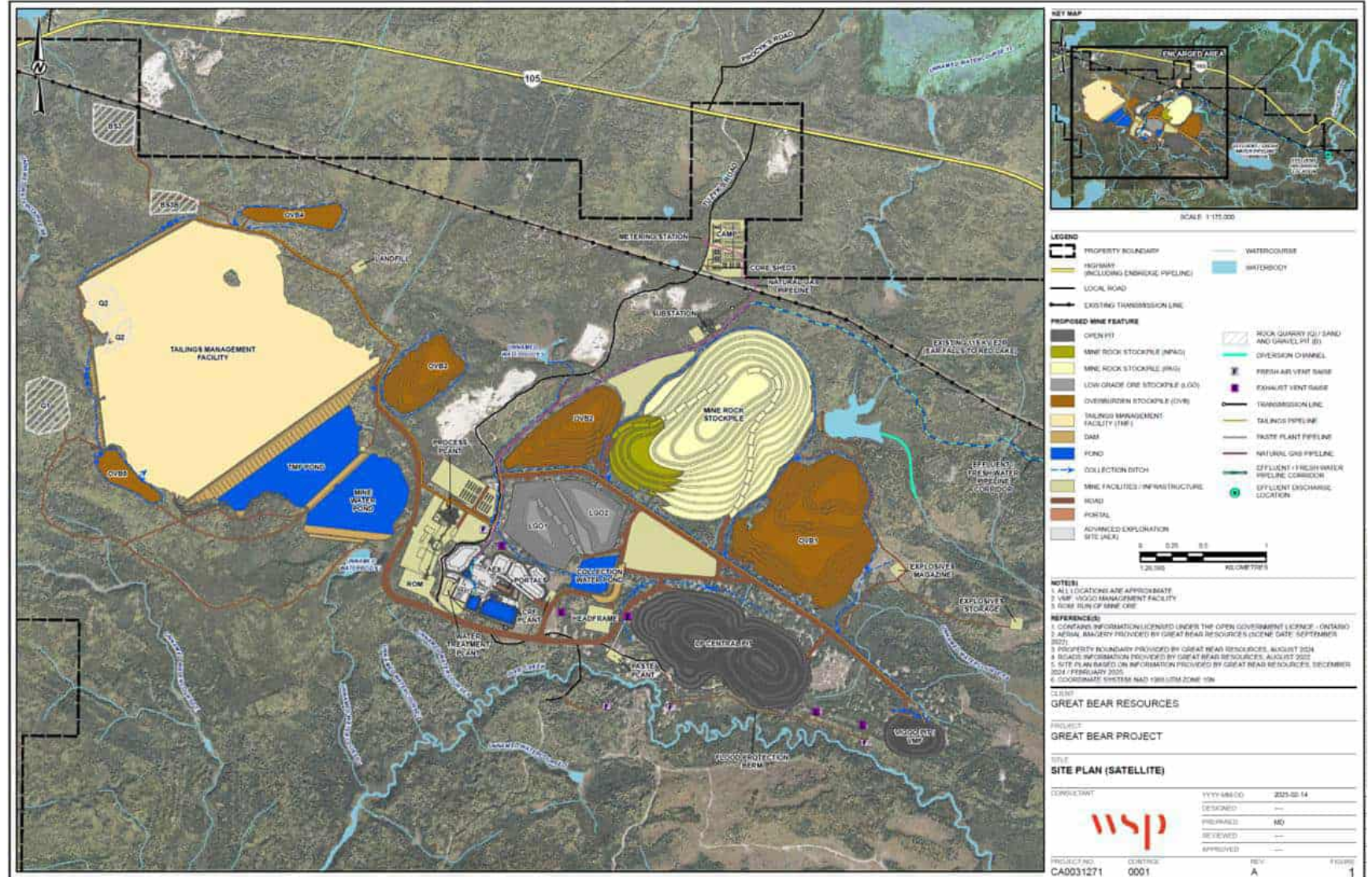
Submission 3 - Q1 2026 Engagement, Indigenous Peoples LSFN, Indigenous Peoples EFN, Indigenous Peoples ANA, Indigenous Peoples Métis, Indigenous Peoples in Red Lake and Ear Falls, Cumulative Effects, Environmental Management and Monitoring, Conclusions (9 Sections)

Main Mine Overview

- Proposed open pit and underground mine.
- Initial planned 12-year mine life, preparing for 26 year expected LOM with strong UG expansion potential.
- A planned 10,000 tpd processing rate.
- Tailings Management Facility, including thickened tailings and desulfurization.
- Annual gold production of 300,000 to 500,000 oz.
- When in operation, the Mine is expected to have 700-1,100 workers.
- Camp with ~1,000 room capacity to support construction and targeting 300 rooms during operations.
- State of the art water treatment facility.



Site Layout



Engagement

- 8 community engagement sessions - Across Frenchman's Head, Kejick Bay, Whitefish Bay, and Lac Seul/Red Lake
 - October 2023 - Introduction to the Project, Advanced Exploration, Main Mine Project
 - November 2023 - Advanced Exploration
 - June 2024 - Project information, Advanced Exploration, Main Mine Project
 - September 2024 - Main Mine Project, Federal Permitting, Into to Fish Compensation and Closure
 - January 2025 - Office Hours
 - February 2025 - Fish Compensation Workshop
 - March 2025 - Species of Interest Workshop
 - April 2025 - Closure Planning Workshop
 - May 2025 - Office Hours
- Monthly Environmental Management Meetings & regular site tours.
- Meetings to support the ALIA Process and facilitate the sharing of information
- Advancing a formal Partnership Agreement for the Main Mine Project



Workshops

What we've heard:

February 2025 - Fish Compensation Workshop

- There was a strong emphasis on collaboration and the importance of incorporating local knowledge into planning.
- Youth engagement and educational programs were highlighted as important long-term investments.
- Interest in community-led conservation effort for Wabauskang Lake.

March 2025 - Species of Interest Workshop

- Generally, all communities were pleased to see the extent of the baseline information collected.
- Wild Rice was noted as important across many different engagements.
- There were questions about how to manage wildlife as a part of closure.
- Concerns were raised about interactions of wildlife with tailings, and noise/vibration disturbances to wildlife.
- Community members were interested in monitoring and adaptive management.



Workshops

What we've heard:

April 2025 - Closure Planning Workshop

- Water management and protection at all stages of the project and through closure was a key topic of discussion.
- Community members seemed mostly interested in a return to a natural state.
- Participants encouraged preservation and restoration of animal corridors, medicinal plants, and culturally significant species like wild rice and lady slippers.
- Attendees emphasized the importance of planning for post-closure impacts on workers and communities, job creation, training, youth engagement.

Upcoming Workshops:

- Fisheries Offset regroup and Alternatives Assessment (October)
- Effects Assessment (November)



Key Highlights

- Elder Site Visit - April 9, 2024
- Tour to Bald Mountain/Mineral Hill - August 2024
- Archeological Tour - October 10, 2025
- Ceremonial visit - October 30, 2024
- Sponsorships - Career Fair, Treaty Days, Ice Fishing Derby, Christmas Activities
- School Programming - Mining Matters
- Scholarships & Bursaries Program
- Wild Rice Revitalization Initiative
- Trout Unlimited/Freshwater Canada Partnership
- Drone Training - Community Caribou Study
- EMC - US Sites Tour
- Fall Shaking Tent Ceremony



KINROSS

Great Bear

Contact Info

807.631.6769

greatbearinfo@kinross.com



KINROSS

Kinross Great Bear – GCT3/LSFN/WFN Updates

1. Agenda and Attachments

Presentation attached below.

2. Overview of Dialogue

Summary of Questions and Responses

Kinross Great Bear (GBR) shared an update on the Great Bear Project, outlining progress, environmental work, and community engagement. The proposed 26-year open-pit and underground mine aims to process 10,000 tonnes per day and employ 300–1,000 people, prioritizing local and Indigenous hiring.

While some exploration permits are delayed, key infrastructure like the water treatment plant and pipeline is advancing. GBR continues the ALIA Impact Statement process, integrating ongoing First Nations input.

Kinross and community partners emphasized transparency, collaboration, and long-term environmental stewardship.

Client Name:	Kinross Gold Corporation		Project No:	
Project Name:	Great Bear Project			
Meeting Type:	In-Person []		Virtual [13+]	Hybrid [0]
Location:	Virtual			
Date:	September 25, 2025	Time:	1:00 – 2:30pm	
Attendance	Kinross Great Bear <ul style="list-style-type: none"> - Ashley Moncrief - Gwyneth Carlson - Justine Henderson 		<ul style="list-style-type: none"> - Anton Dodic - Ashlee Perrault - Rod Bacon - Reggie Bacon - Jeff Harman - Joanne Petiquin - Walter Mainville - Grant Chinsel - Triin Hart - Chris Herc 	

Introduction

Kinross Great Bear provided an update on the Project, that included an introduction to Kinross Gold. GBR staff introduced themselves, and opened the floor to guest introductions.

- Introduction to Kinross
- Location of the Project
- Overview of the Main Mine
- Current Status
- Federal Approvals
- Impact Statement / ALIA Process
- Site Layout
- Engagements / Workshops

- Key Highlights

GBR presented for GCT3, GBR thought it would be a great opportunity to host a joint update.

GBR advised the main project at this time is proposed. GBR does have delays in key permits for advanced exploration, however construction has progressed and key infrastructure is in preparation. Key infrastructure for GBR at the moment are the water treatment plant, Chukuni river pipeline, installation of natural gas substation and permit to remove trees. GBR hosts monthly EMC meetings.

GBR Environmental has invested years of work in research, with support of Shared Spirits to come out for a lot of baseline studies. Environmental stewardship is at the top of Kinross' priority.

ALIA process update was shared.

GBRs proposal for the Main Mine is preparing for 26 year life of mine, it is proposed open pit and underground mine. There is a planned 10,000 tonnes per day with expectancy to employ anywhere between 300-1000 at some points. GBR want to prioritize local and indigenous workers.

GBR reviewed the proposed site layout design.

GBR hosts monthly engagements and meetings in WFN and Lac Seul – GBR noted if there are no specific presentations, office hours are hosted community members can meet with GBR monthly. There is a focus on workshops, for example, February 2025 a fish offsetting workshop was completed. Early engagement is key to incorporate the FN feedback into plans.

Shared Spirits shared their experience regarding the US Tour sites.

GBR has a presentation of the US Tours, community members were encouraged to look through the slides and Liaisons can share some additional information.

Shared Spirits presented.

ALIA was discussed.

Kinross is very proud of the collaboration and a thank you to all that attended this meeting and a joint update.

PRESENTATION – KINROSS GREAT BEAR



Great Bear



1



2



3



4



5



6



7



8



9



10



11



12



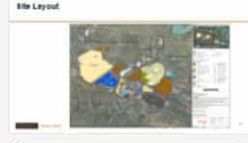
13



14



15



16



17



18



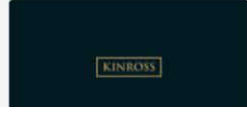
19



20



21



22

PRESENTATION – ALIA
SHARED SPIRITS – CHUKUNI AQUATIC MONITORING