

## Marine Spatial Conflict and Cumulative Effects in Placentia Bay

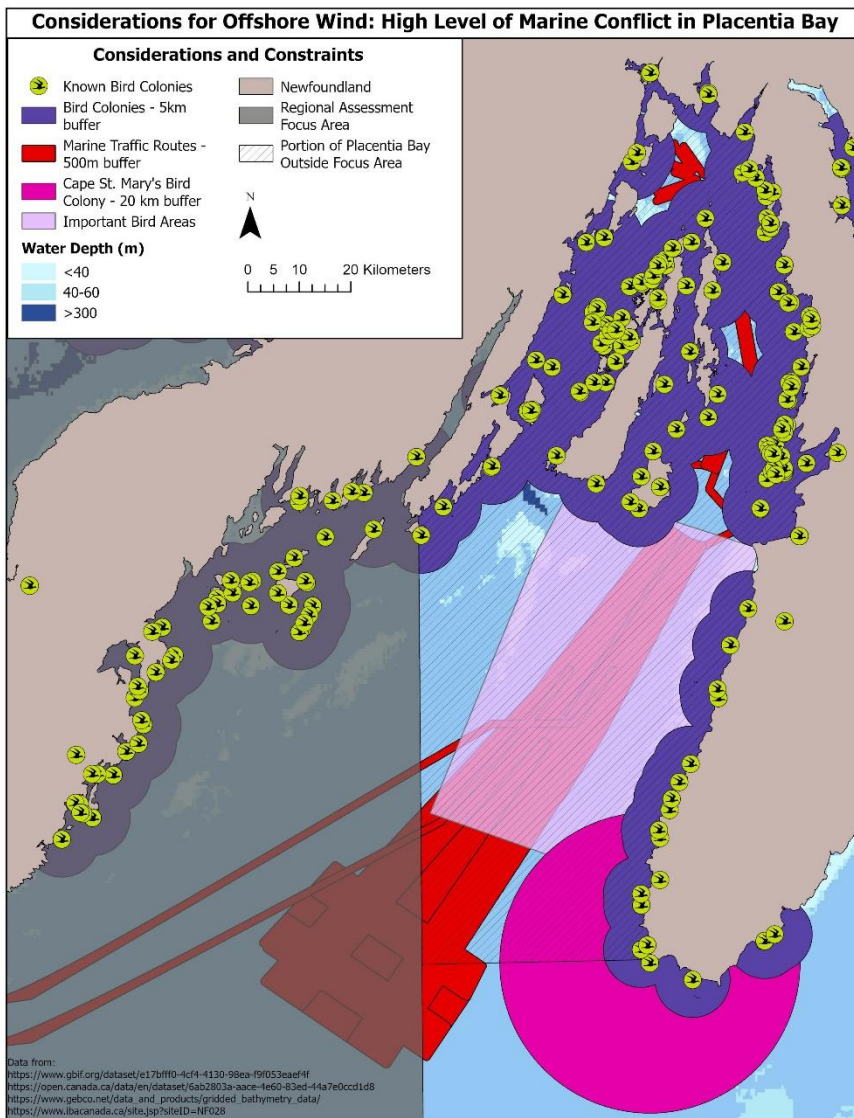
**Description:** This map was developed by the Committee conducting the Regional Assessment of Offshore Wind Development in Newfoundland and Labrador in response to the Province's request to include Placentia Bay in the assessment focus area.

The Committee did not include Placentia Bay in the focus area because of iceberg occurrence. This map additionally shows, that even without considering icebergs, the Committee would not recommend licencing areas within Placentia Bay because of a high level of marine spatial conflict and cumulative effects.

Importantly, **this map is not an in-depth analysis of constraints to offshore wind development in Placentia Bay.** This map shows only known bird colonies, important bird areas (IBAs),<sup>1</sup> marine traffic routes, and conservative (i.e., small) buffers around these areas to show some of the many locations offshore wind could not be sited. Areas suitable for offshore wind would be even fewer if constraints such as visual resources, recreational and subsistence harvesting areas, and other fisheries were also included in above analysis.

Areas suitable for offshore wind would be even fewer if constraints such as visual resources, recreational and subsistence harvesting areas, and other fisheries were also included in above analysis.

***This analysis is not indicative of the constraints nor buffers the Committee will consider when recommending offshore wind licencing areas in the focus area.*** The Committee is continuing to gather information to determine appropriate constraints and buffers.



<sup>1</sup> The Placentia Bay IBA is a globally significant area for congregatory species. More information is available under the [Placentia Bay IBA Site Listing](#).