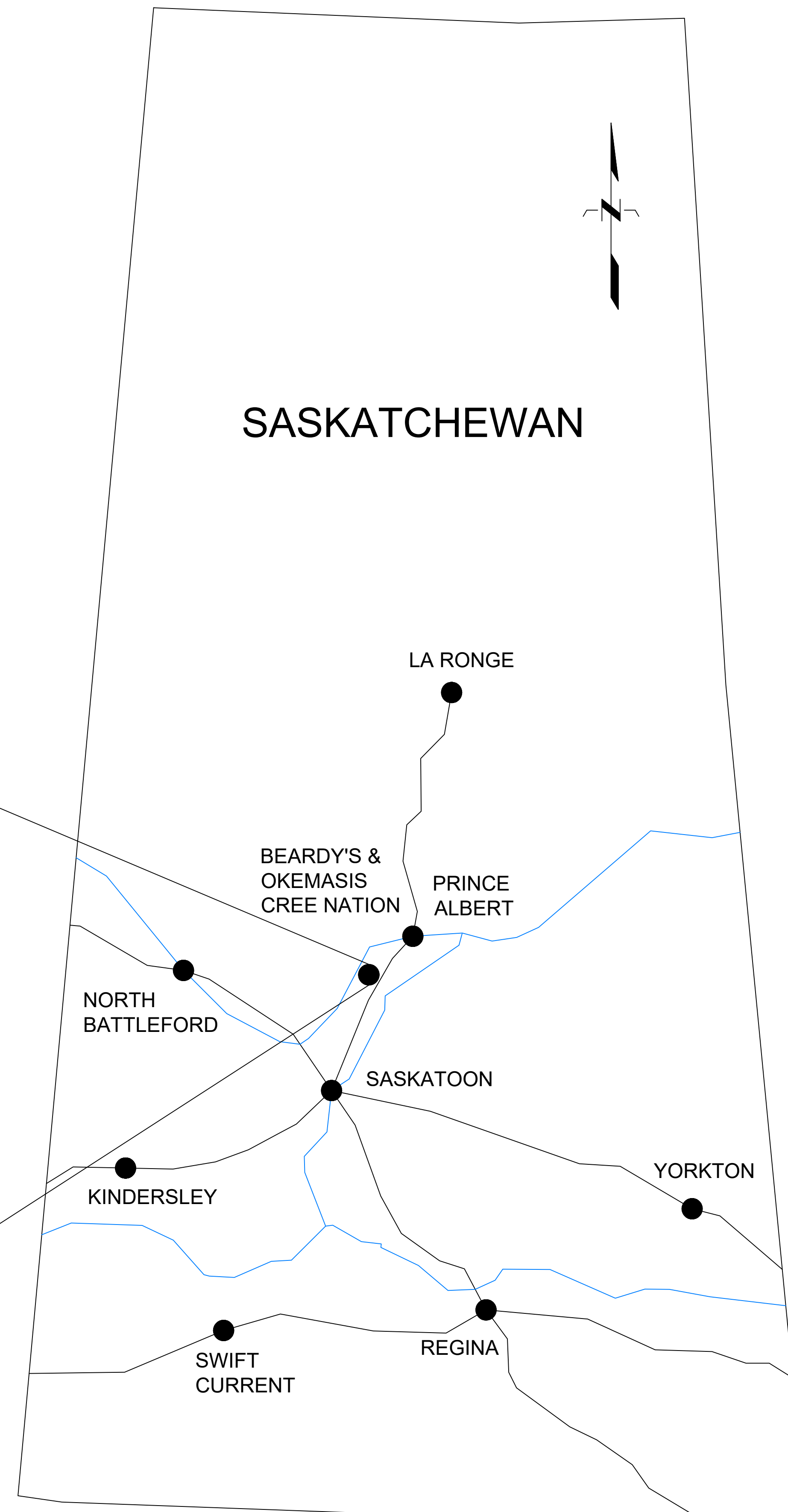
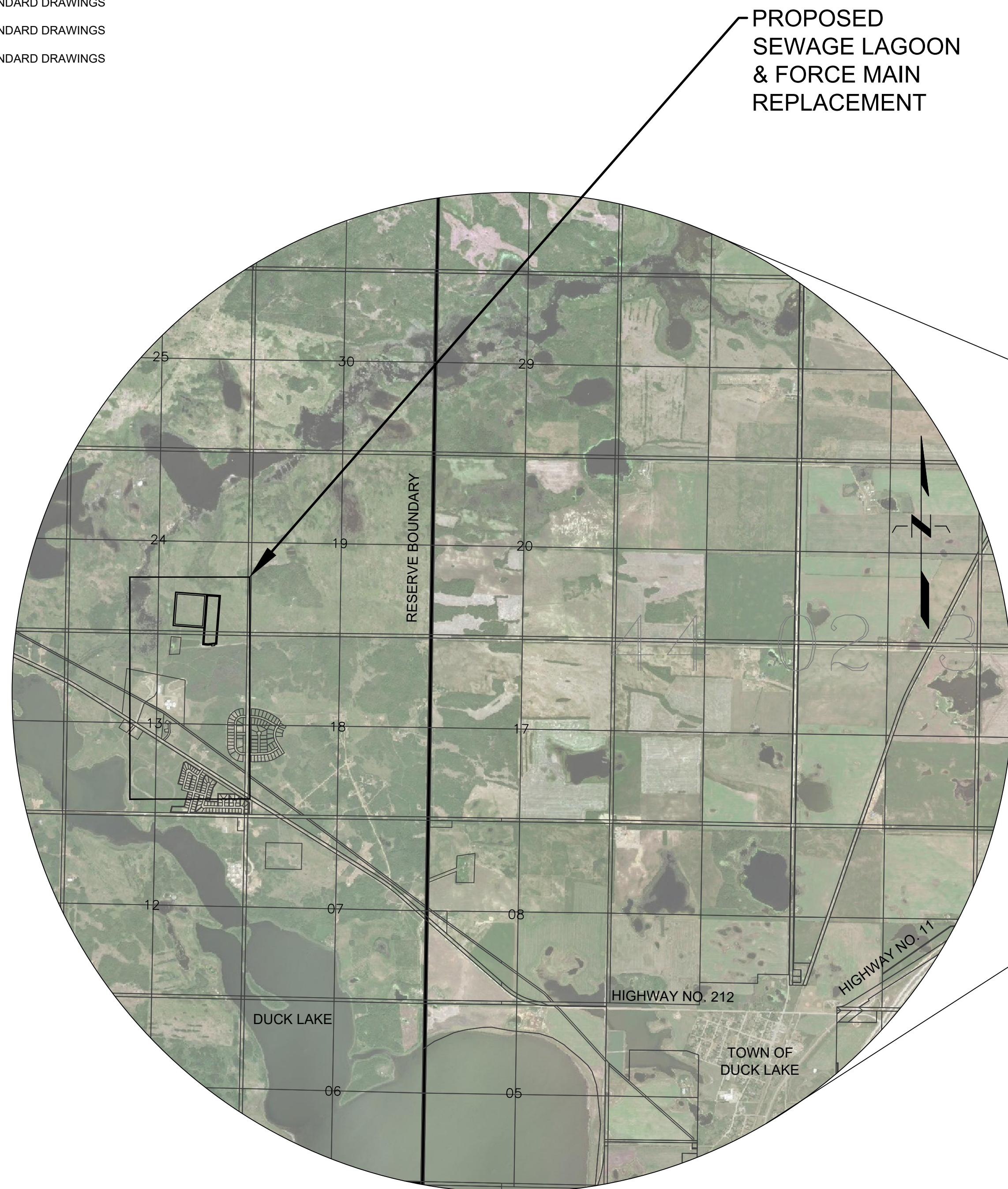


BEARDY'S & OKEMASIS CREE NATION SEWAGE LAGOON & FORCE MAIN REPLACEMENT

DRAWING INDEX

MUNICIPAL

- G-01 KEY PLAN
- G-02 LOCATION PLAN
- P-01 EXISTING SITE PLAN
- P-02 PROPOSED SITE PLAN
- P-03 PROPOSED GRADING PLAN
- P-04 ACCESS ROAD UPGRADE
PLAN/PROFILE STA 0+000 TO 0+320
- P-05 SEWAGE FORCE MAIN REPLACEMENT
PLAN/PROFILE STA 0+000 TO 0+700
- P-06 SEWAGE FORCE MAIN REPLACEMENT
PLAN/PROFILE STA 0+700 TO 1+400
- P-07 SEWAGE FORCE MAIN REPLACEMENT
PLAN/PROFILE STA 1+400 TO 2+074
- D-01 LAGOON CROSS SECTIONS
- D-02 STANDARD DRAWINGS
- D-03 STANDARD DRAWINGS
- D-04 STANDARD DRAWINGS



PRELIMINARY
NOT FOR CONSTRUCTION

NO.	DATE	REVISION	BY	APPD
1	FEB 11 2022	ISSUED FOR 50% REVIEW	JNM	WCS

SAL Engineering Ltd.
Professional Consulting Engineers and Project Managers
2222 Avenue C North, Saskatoon, SK S0N 0G2
Tel: (306) 922-8811 Fax: (306) 922-8822
E: info@salengineering.ca Website: www.salengineering.ca

BEARDY'S & OKEMASIS CREE NATION
SEWAGE LAGOON & FORCE MAIN
REPLACEMENT
ISC PROJECT NO. CT603

KEY PLAN

PLAN DATE: NOV. 08, 2021 SCALE: 1:30,000

PLAN NO. G-01



CONTROL POINTS

NO.	NORTHING	EASTING	ELEVATION
1	5854230.335	411885.703	503.348
2	5855864.670	412094.343	505.907
3	5855852.578	412715.859	510.009

- NOTES**
1. LOCATION OF ALL EXISTING UTILITIES ARE NOT SHOWN. CONTRACTOR TO DETERMINE LOCATIONS BEFORE CONSTRUCTION START. CONTRACTOR IS RESPONSIBLE FOR DAMAGE TO UTILITIES.
 2. MINIMUM DEPTH OF BURY OF SEWAGE FORCE MAIN TO TOP OF PIPE TO BE 3.0 m.
 3. CONTRACTOR TO MEET MINIMUM BENDING RADIUS OF PIPE AS PER MANUFACTURER'S SPECIFICATIONS.
 4. CONTRACTOR TO RETURN ANY ROADS AFFECTED BY CONSTRUCTION TO ORIGINAL CONDITION, REGRADE AND REGRAVEL AS REQUIRED.
 5. CONTRACTOR TO PROVIDE TRAFFIC CONTROL, BARRIERS, AND SIGNAGE MEETING APPLICABLE REGULATORY AGENCY REQUIREMENTS DURING CONSTRUCTION.
 6. CONTRACTOR TO DISPOSE OF TREES, DEBRIS, AND EXCAVATED MATERIALS AT LOCATION DESIGNATED BY OWNER.
 7. AERIAL IMAGERY UNDERLAY MAY NOT REPRESENT ACTUAL SITE CONDITIONS.
 8. LEGAL FABRIC SOURCE: INFORMATION SERVICES CORPORATION, SASK SURFACE CADASTRAL.

PRELIMINARY
NOT FOR CONSTRUCTION

1	FEB 11 2022	ISSUED FOR 50% REVIEW	JNM	WCS
NO.	DATE	REVISION	BY	APP'D



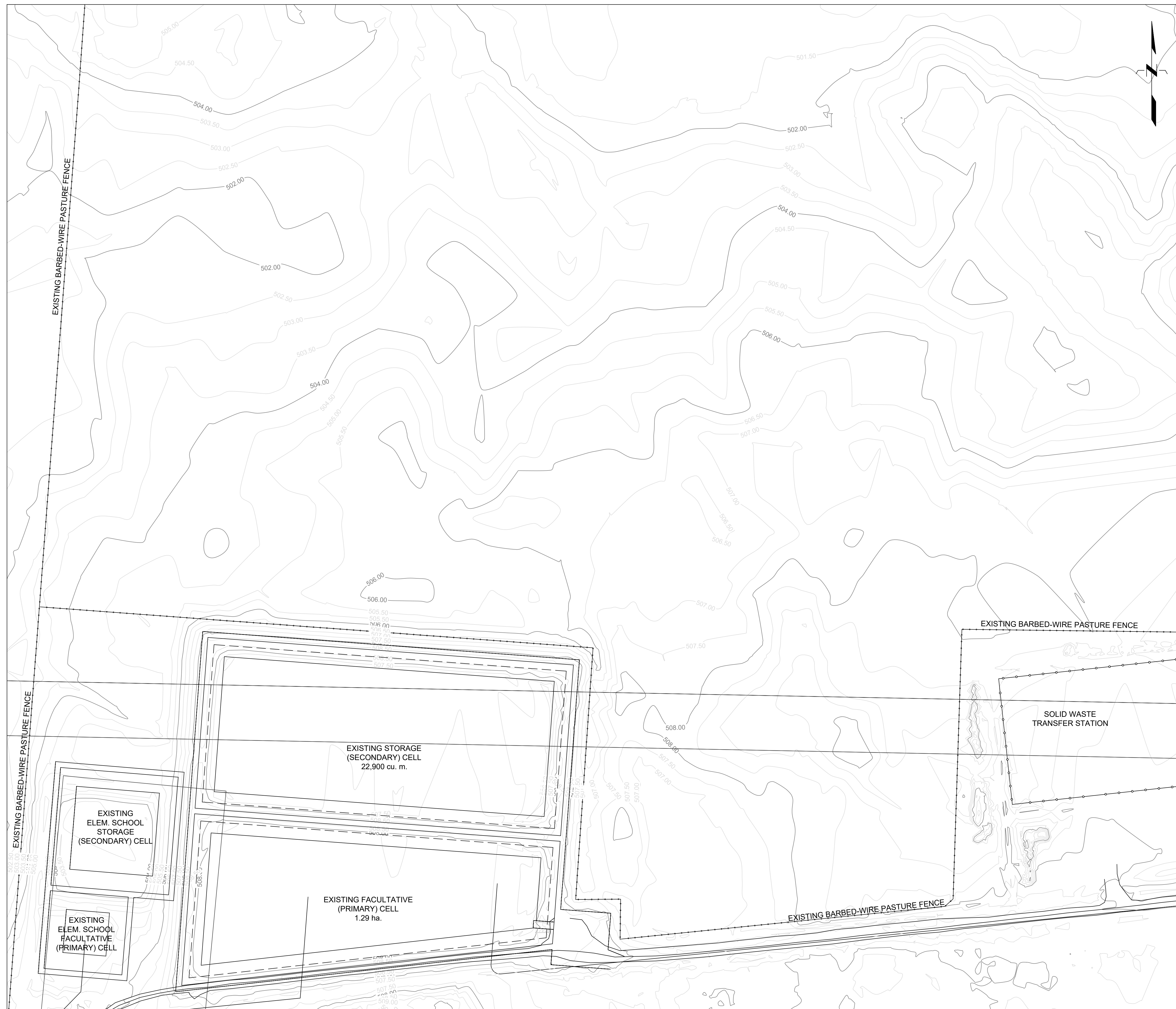
BEARDY'S & OKEMASIS CREE NATION
SEWAGE LAGOON & FORCE MAIN
REPLACEMENT
ISC PROJECT NO. CT603

LOCATION PLAN

PLAN DATE: NOV. 08, 2021 SCALE: 1:4,000

PLAN NO. G-02

File Name:



NOTES

1. LOCATION OF ALL EXISTING UTILITIES ARE NOT SHOWN. CONTRACTOR TO DETERMINE LOCATIONS BEFORE CONSTRUCTION START. CONTRACTOR IS RESPONSIBLE FOR DAMAGE TO UTILITIES.
2. MINIMUM DEPTH OF BURY OF SEWAGE FORCE MAIN TO TOP OF PIPE TO BE 3.0 m.
3. CONTRACTOR TO MEET MINIMUM BENDING RADIUS OF PIPE AS PER MANUFACTURER'S SPECIFICATIONS.
4. CONTRACTOR TO RETURN ANY ROADS AFFECTED BY CONSTRUCTION TO ORIGINAL CONDITION, REGRADE AND REGRAVEL AS REQUIRED.
5. CONTRACTOR TO PROVIDE TRAFFIC CONTROL, BARRIERS, AND SIGNAGE MEETING APPLICABLE REGULATORY AGENCY REQUIREMENTS DURING CONSTRUCTION.
6. CONTRACTOR TO DISPOSE OF TREES, DEBRIS, AND EXCAVATED MATERIALS AT LOCATION DESIGNATED BY OWNER.
7. AERIAL IMAGERY UNDERLAY MAY NOT REPRESENT ACTUAL SITE CONDITIONS.
8. LEGAL FABRIC SOURCE: INFORMATION SERVICES CORPORATION, SASK SURFACE CADASTRAL.

PRELIMINARY
NOT FOR CONSTRUCTION

1	FEB 11 2022	ISSUED FOR 50% REVIEW	JNM WCS
NO.	DATE	REVISION	BY APPD

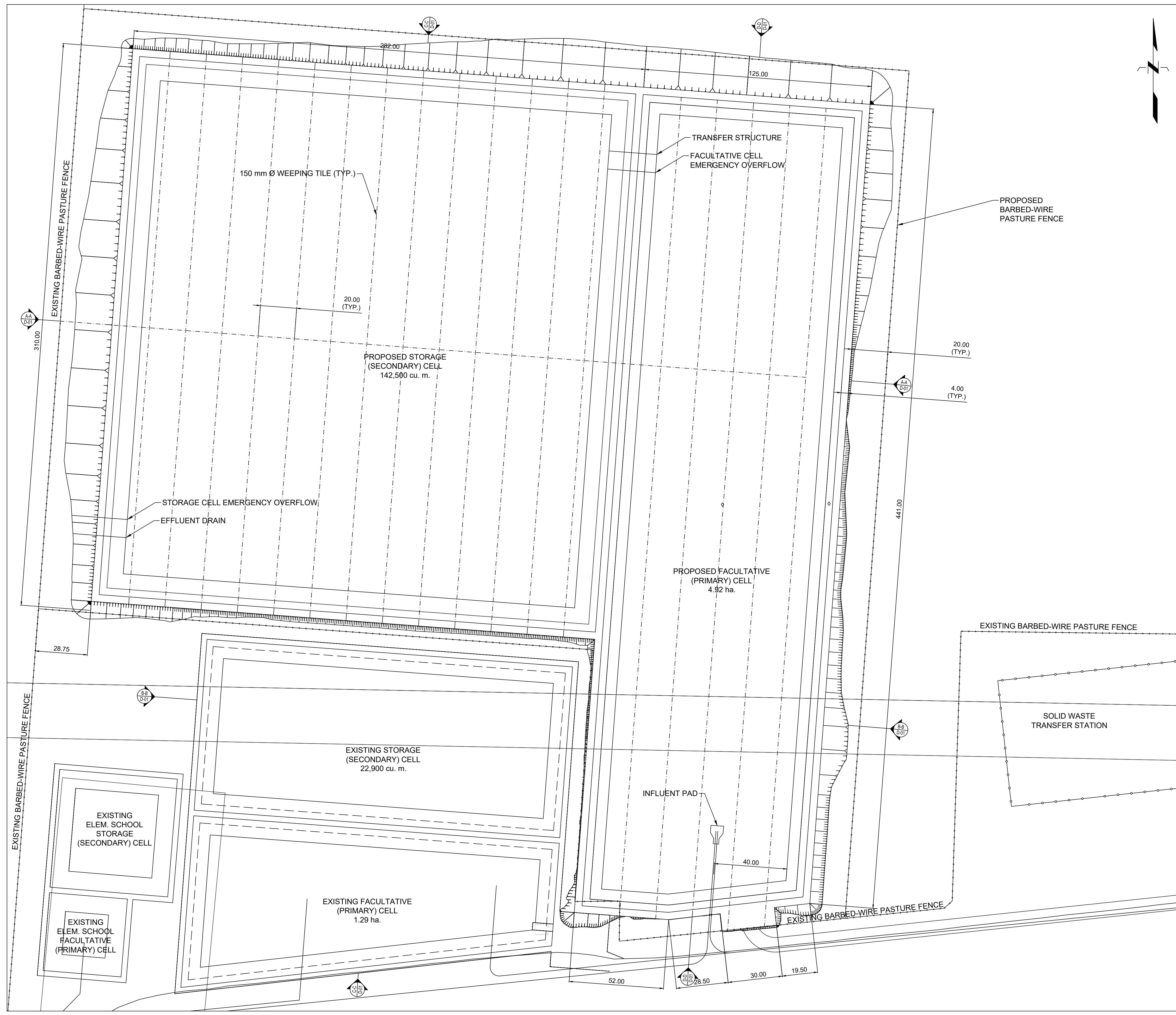
SAL Engineering Ltd.
Professional Consulting Engineers and Project Managers
2222 Avenue C North, Saskatoon, SK S0N 0G2
Tel: (306) 922-4411 Fax: (306) 922-4422
Email: info@saleng.com Website: www.saleng.com

BEARDY'S & OKEMASIS CREE NATION
SEWAGE LAGOON & FORCE MAIN
REPLACEMENT
ISC PROJECT NO. CT603

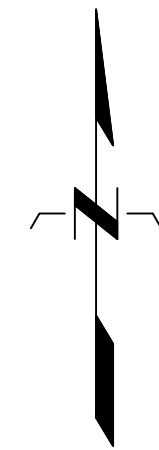
EXISTING SITE PLAN

PLAN DATE: NOV. 08, 2021 SCALE: 1:1,000

PLAN NO. P-01



- NOTES**
1. LOCATION OF ALL EXISTING UTILITIES ARE NOT SHOWN. CONTRACTOR TO DETERMINE LOCATIONS BEFORE CONSTRUCTION START. CONTRACTOR IS RESPONSIBLE FOR DAMAGE TO UTILITIES.
 2. MINIMUM DEPTH OF BURY OF SEWAGE FORCE MAIN TO TOP OF PIPE TO BE 3.0 m.
 3. CONTRACTOR TO MEET MINIMUM BENDING RADIUS OF PIPE AS PER MANUFACTURER'S SPECIFICATIONS.
 4. CONTRACTOR TO RETURN ANY ROADS AFFECTED BY CONSTRUCTION TO ORIGINAL CONDITION, REGRADE AND REGRAVEL AS REQUIRED.
 5. CONTRACTOR TO PROVIDE TRAFFIC CONTROL BARRIERS, AND SIGNAGE MEETING APPLICABLE REGULATORY AGENCY REQUIREMENTS DURING CONSTRUCTION.
 6. CONTRACTOR TO DISPOSE OF TREES, DEBRIS, AND EXCAVATED MATERIALS AT LOCATION DESIGNATED BY OWNER.
 7. AERIAL IMAGERY UNDERLAY MAY NOT REPRESENT ACTUAL SITE CONDITIONS.
 8. LEGAL FABRIC SOURCE: INFORMATION SERVICES CORPORATION, SASK SURFACE CADASTRAL.



PRELIMINARY
NOT FOR CONSTRUCTION

NO.	DATE	REVISION	BY	APPD
1	FEB 11 2022	ISSUED FOR 50% REVIEW	JNM	WCS

SAL Engineering Ltd.
Professional Consulting Engineers and Project Managers
2222 Avenue C North, Saskatoon, SK S0N 0G2
Tel: (306) 922-8111 Fax: (306) 922-8122
Email: sales@saleng.com Website: www.saleng.com

**BEARDY'S & OKEMASIS CREE NATION
SEWAGE LAGOON & FORCE MAIN
REPLACEMENT
ISC PROJECT NO. CT603**

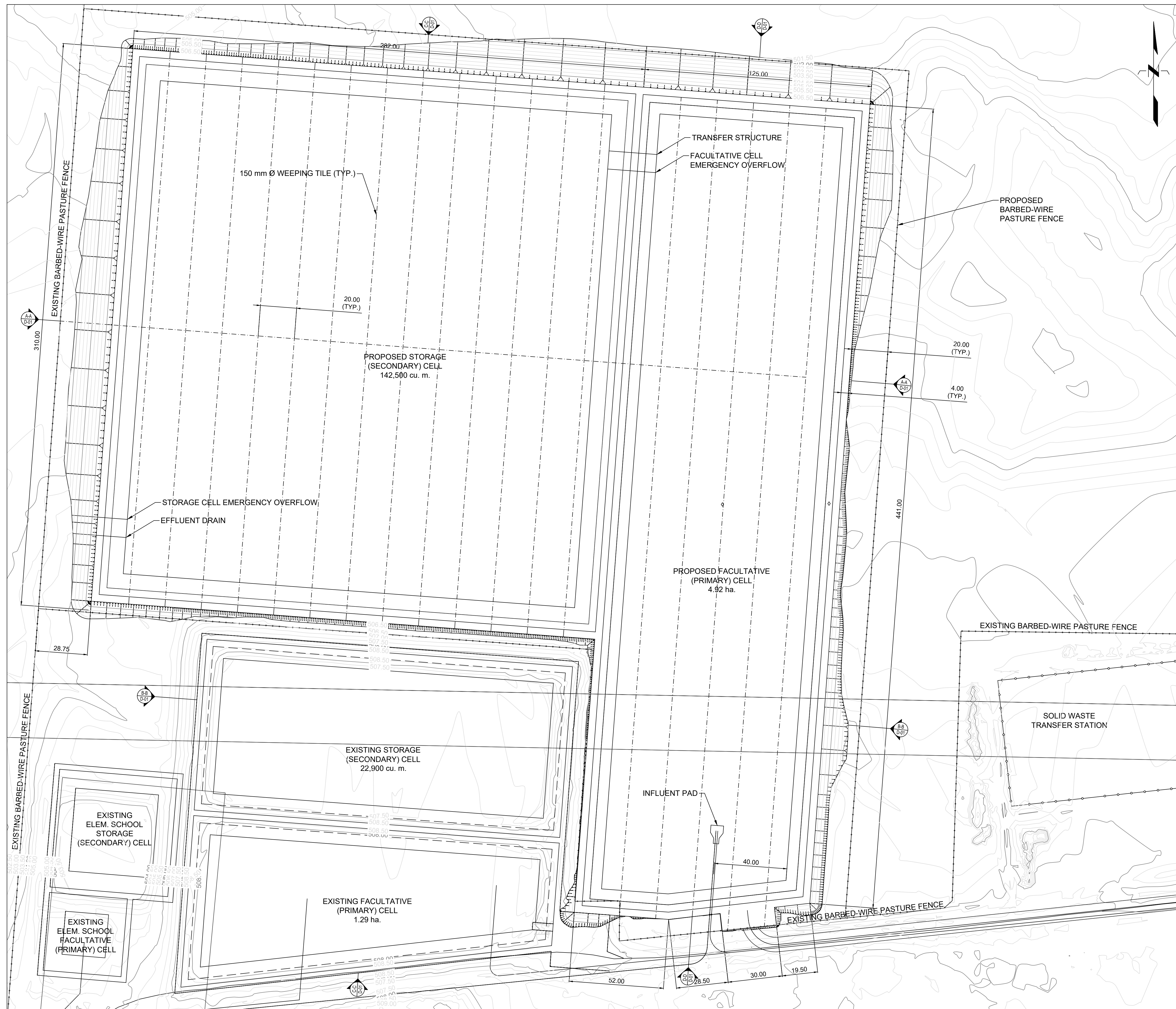
PROPOSED SITE PLAN

PLAN DATE: NOV. 08, 2021 SCALE: 1:1,000
PLAN NO. P-02

File Name:

NOTES

1. LOCATION OF ALL EXISTING UTILITIES ARE NOT SHOWN. CONTRACTOR TO DETERMINE LOCATIONS BEFORE CONSTRUCTION START. CONTRACTOR IS RESPONSIBLE FOR DAMAGE TO UTILITIES.
2. MINIMUM DEPTH OF BURY OF SEWAGE FORCE MAIN TO TOP OF PIPE TO BE 3.0 m.
3. CONTRACTOR TO MEET MINIMUM BENDING RADIUS OF PIPE AS PER MANUFACTURER'S SPECIFICATIONS.
4. CONTRACTOR TO RETURN ANY ROADS AFFECTED BY CONSTRUCTION TO ORIGINAL CONDITION, REGRADE AND REGRAVEL AS REQUIRED.
5. CONTRACTOR TO PROVIDE TRAFFIC CONTROL BARRIERS, AND SIGNAGE MEETING APPLICABLE REGULATORY AGENCY REQUIREMENTS DURING CONSTRUCTION.
6. CONTRACTOR TO DISPOSE OF TREES, DEBRIS, AND EXCAVATED MATERIALS AT LOCATION DESIGNATED BY OWNER.
7. AERIAL IMAGERY UNDERLAY MAY NOT REPRESENT ACTUAL SITE CONDITIONS.
8. LEGAL FABRIC SOURCE: INFORMATION SERVICES CORPORATION, SASK SURFACE CADASTRAL.



PRELIMINARY
NOT FOR CONSTRUCTION

1	FEB 11 2022	ISSUED FOR 50% REVIEW	JNM	WCS
NO.	DATE	REVISION	BY	APPD

SAL Engineering Ltd.
Professional Consulting Engineers and Project Managers
2222 Avenue C North, Saskatoon, SK S7N 0C2
Tel: (306) 922-4111 Fax: (306) 922-4112
Email: info@saleng.com Website: www.saleng.com

BEARDY'S & OKEMASIS CREE NATION
SEWAGE LAGOON & FORCE MAIN
REPLACEMENT
ISC PROJECT NO. CT603

PROPOSED GRADING PLAN

PLAN DATE: NOV. 08, 2021 SCALE: 1:1,000

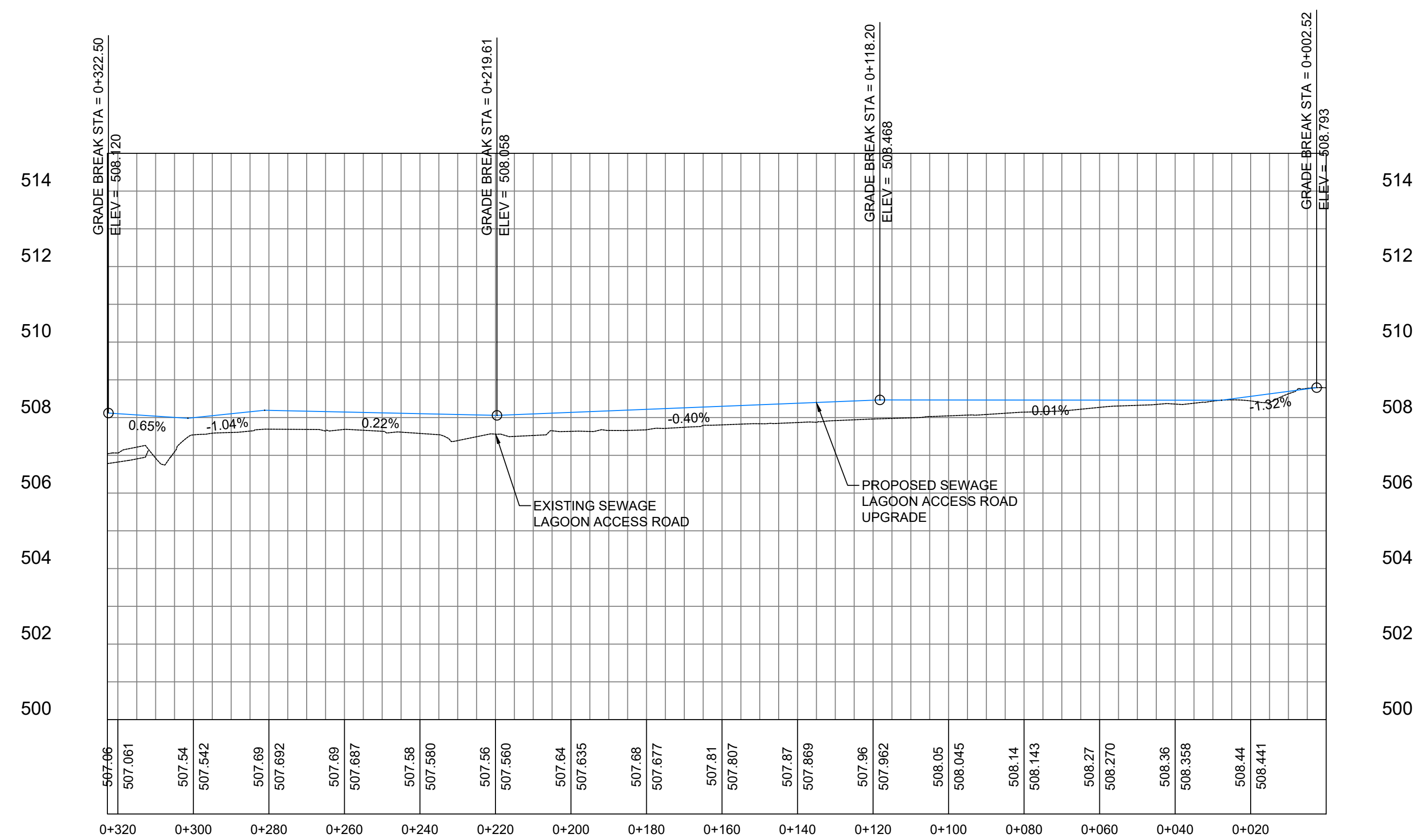
PLAN NO. P-03



NOTES

1. LOCATION OF ALL EXISTING UTILITIES ARE NOT SHOWN. CONTRACTOR TO DETERMINE LOCATIONS BEFORE CONSTRUCTION START. CONTRACTOR IS RESPONSIBLE FOR DAMAGE TO UTILITIES.
2. MINIMUM DEPTH OF BURY OF SEWAGE FORCE MAIN TO TOP OF PIPE TO BE 3.0 m.
3. CONTRACTOR TO MEET MINIMUM BENDING RADIUS OF PIPE AS PER MANUFACTURER'S SPECIFICATIONS.
4. CONTRACTOR TO RETURN ANY ROADS AFFECTED BY CONSTRUCTION TO ORIGINAL CONDITION, REGRADE AND REGRAVEL AS REQUIRED.
5. CONTRACTOR TO PROVIDE TRAFFIC CONTROL BARRIERS, AND SIGNAGE MEETING APPLICABLE REGULATORY AGENCY REQUIREMENTS DURING CONSTRUCTION.
6. CONTRACTOR TO DISPOSE OF TREES, DEBRIS, AND EXCAVATED MATERIALS AT LOCATION DESIGNATED BY OWNER.
7. AERIAL IMAGERY UNDERLAY MAY NOT REPRESENT ACTUAL SITE CONDITIONS.
8. LEGAL FABRIC SOURCE: INFORMATION SERVICES CORPORATION, SASK SURFACE CADASTRAL.

PRELIMINARY
NOT FOR CONSTRUCTION



NO.	DATE	REVISION	BY	APP'D
1	FEB 11 2022	ISSUED FOR 50% REVIEW	RLM	JNM

SAL Engineering Ltd.
Professional Consulting Engineers and Project Managers
2222 Avenue C North, Saskatoon, SK S7N 0C2
Tel: (306) 922-8111 Fax: (306) 922-8122
Email: info@salengineering.ca Website: www.salengineering.ca

BEARDY'S & OKEMASIS CREE NATION
SEWAGE LAGOON & FORCE MAIN
REPLACEMENT
ISC PROJECT NO. CT603

ACCESS ROAD UPGRADE
PLAN/PROFILE STA 0+000 TO 0+320

PLAN DATE: NOV. 08, 2021 SCALE: 1:600

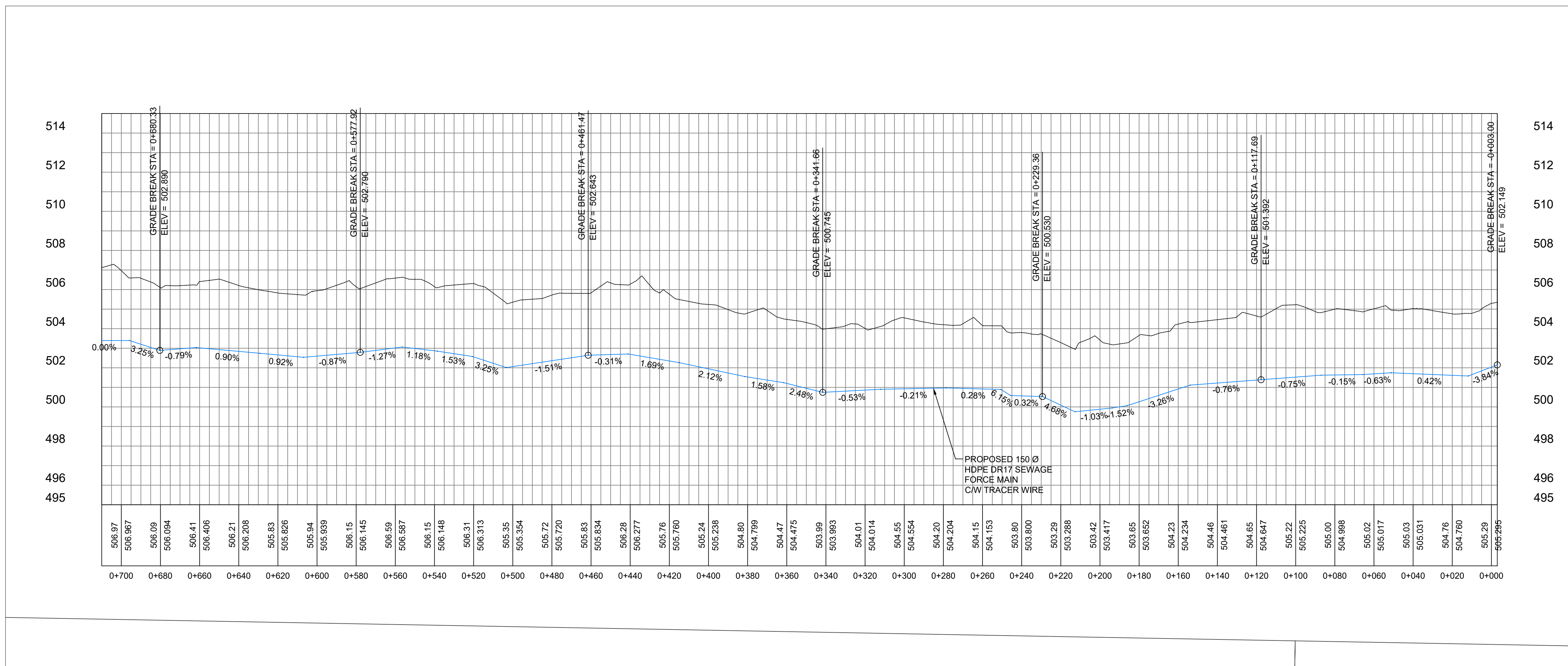
PLAN NO. P-04



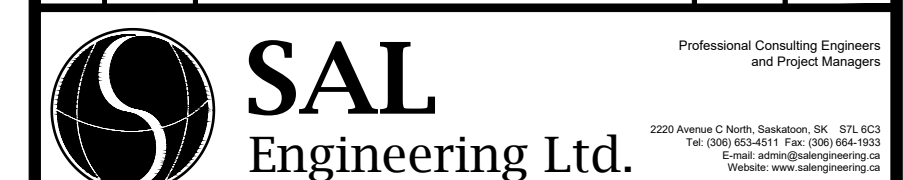
NOTES

1. LOCATION OF ALL EXISTING UTILITIES ARE NOT SHOWN. CONTRACTOR TO DETERMINE LOCATIONS BEFORE CONSTRUCTION START. CONTRACTOR IS RESPONSIBLE FOR DAMAGE TO UTILITIES.
2. MINIMUM DEPTH OF BURY OF SEWAGE FORCE MAIN TO TOP OF PIPE TO BE 3.0 m.
3. CONTRACTOR TO MEET MINIMUM BENDING RADIUS OF PIPE AS PER MANUFACTURER'S SPECIFICATIONS.
4. CONTRACTOR TO RETURN ANY ROADS AFFECTED BY CONSTRUCTION TO ORIGINAL CONDITION, REGRADE AND REGRAVEL AS REQUIRED.
5. CONTRACTOR TO PROVIDE TRAFFIC CONTROL, BARRIERS, AND SIGNAGE MEETING APPLICABLE REGULATORY AGENCY REQUIREMENTS DURING CONSTRUCTION.
6. CONTRACTOR TO DISPOSE OF TREES, DEBRIS, AND EXCAVATED MATERIALS AT LOCATION DESIGNATED BY OWNER.
7. AERIAL IMAGERY UNDERLAY MAY NOT REPRESENT ACTUAL SITE CONDITIONS.
8. LEGAL FABRIC SOURCE: INFORMATION SERVICES CORPORATION, SASK SURFACE CADASTRAL.

PRELIMINARY
NOT FOR CONSTRUCTION



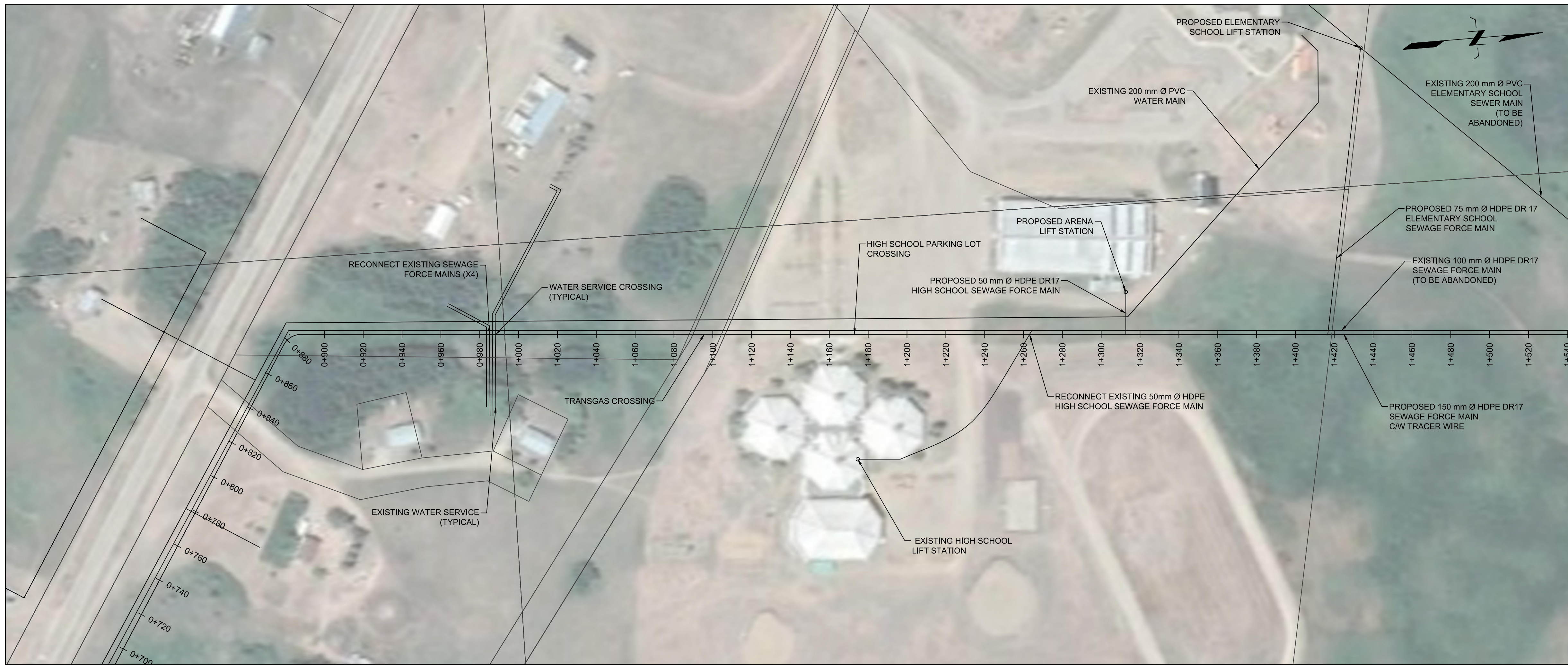
NO.	DATE	REVISION	BY	APPD
1	FEB 11 2022	ISSUED FOR 50% REVIEW	RLM	JNM



**BEARDY'S & OKEMASIS CREE NATION
SEWAGE LAGOON & FORCE MAIN
REPLACEMENT
ISC PROJECT NO. CT603**

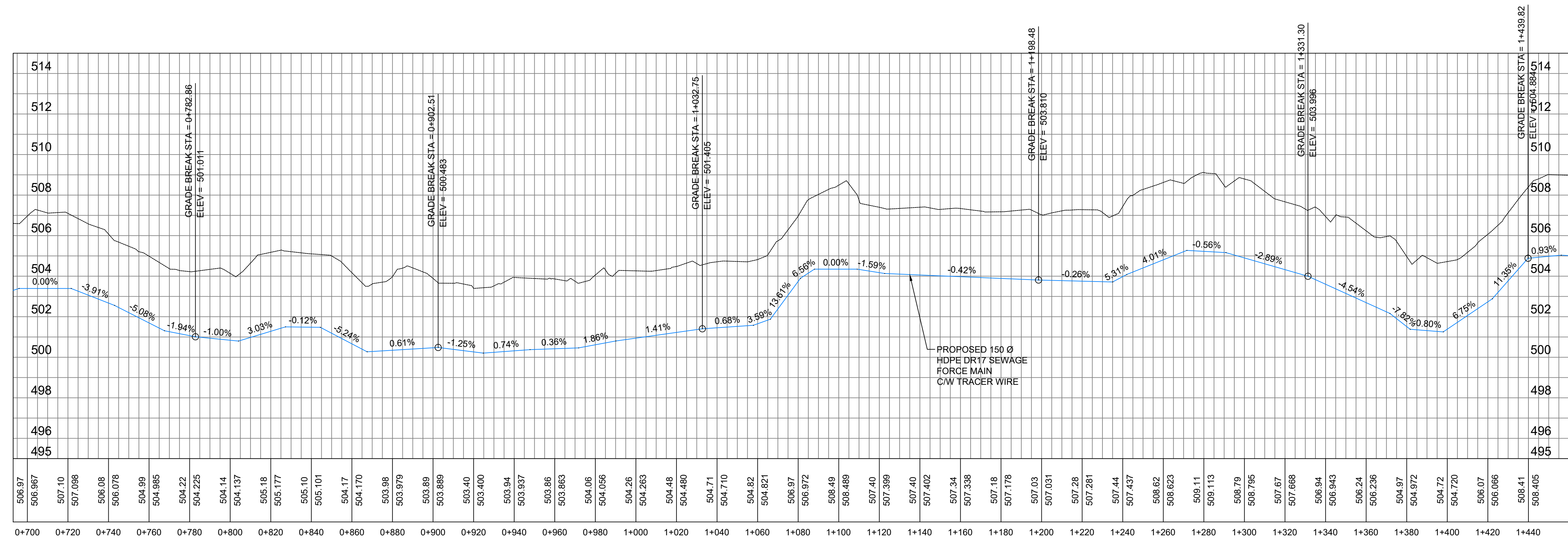
**SEWAGE FORCE MAIN REPLACEMENT
PLAN/PROFILE STA 0+000 TO 0+700**

PLAN DATE: NOV. 08, 2021 SCALE: 1:1,250
PLAN NO. P-05

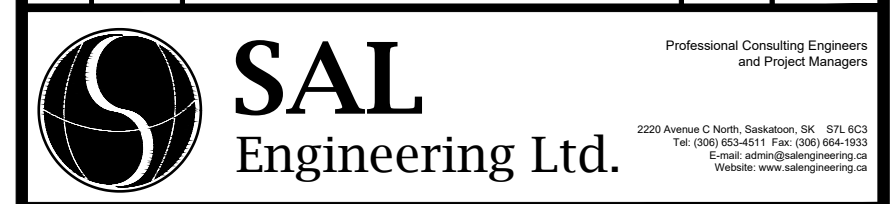


- NOTES**
1. LOCATION OF ALL EXISTING UTILITIES ARE NOT SHOWN. CONTRACTOR TO DETERMINE LOCATIONS BEFORE CONSTRUCTION START. CONTRACTOR IS RESPONSIBLE FOR DAMAGE TO UTILITIES.
 2. MINIMUM DEPTH OF BURY OF SEWAGE FORCE MAIN TO TOP OF PIPE TO BE 3.0 m.
 3. CONTRACTOR TO MEET MINIMUM BENDING RADIUS OF PIPE AS PER MANUFACTURER'S SPECIFICATIONS.
 4. CONTRACTOR TO RETURN ANY ROADS AFFECTED BY CONSTRUCTION TO ORIGINAL CONDITION, REGRADE AND REGRAVEL AS REQUIRED.
 5. CONTRACTOR TO PROVIDE TRAFFIC CONTROL, BARRIERS, AND SIGNAGE MEETING APPLICABLE REGULATORY AGENCY REQUIREMENTS DURING CONSTRUCTION.
 6. CONTRACTOR TO DISPOSE OF TREES, DEBRIS, AND EXCAVATED MATERIALS AT LOCATION DESIGNATED BY OWNER.
 7. AERIAL IMAGERY UNDERLAY MAY NOT REPRESENT ACTUAL SITE CONDITIONS.
 8. LEGAL FABRIC SOURCE: INFORMATION SERVICES CORPORATION, SASK SURFACE CADASTRAL.

PRELIMINARY
NOT FOR CONSTRUCTION



NO.	DATE	REVISION	BY	APPD
1	FEB 11 2022	ISSUED FOR 50% REVIEW	RLM	JNM



**BEARDY'S & OKEMASIS CREE NATION
SEWAGE LAGOON & FORCE MAIN
REPLACEMENT
ISC PROJECT NO. CT603**

**SEWAGE FORCE MAIN REPLACEMENT
PLAN/PROFILE STA 0+700 TO 0+1400**

PLAN DATE: NOV. 08, 2021 SCALE: 1:1,250

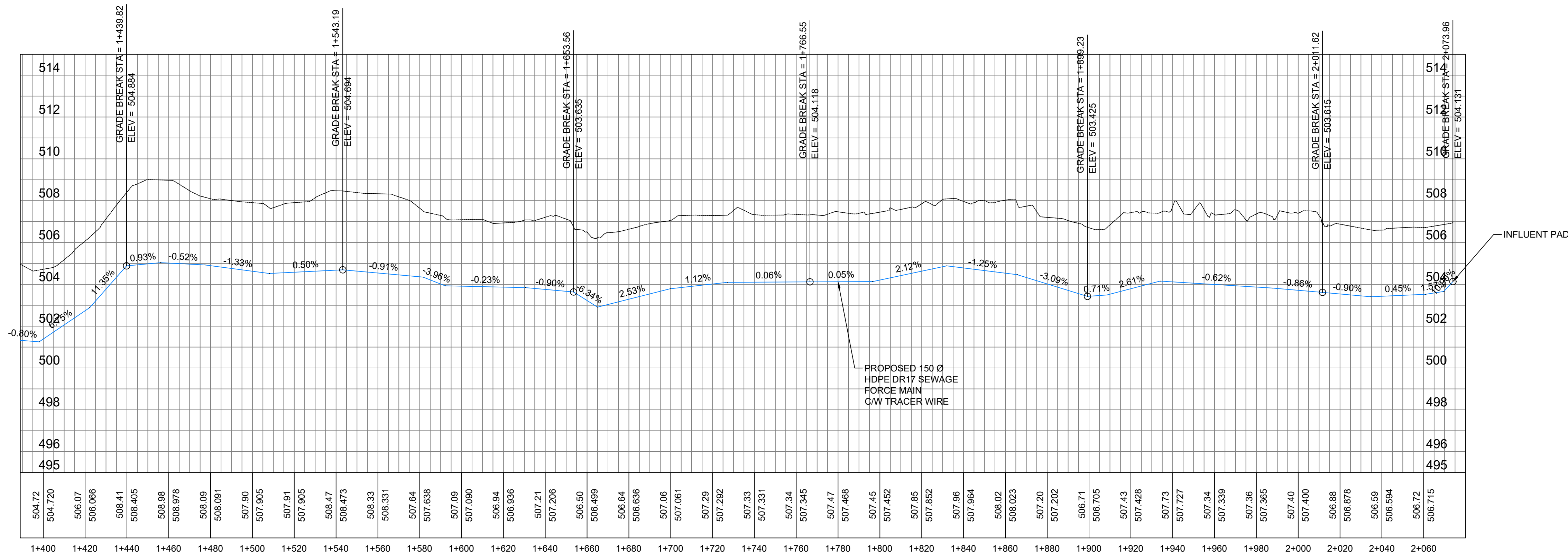
PLAN NO. P-06



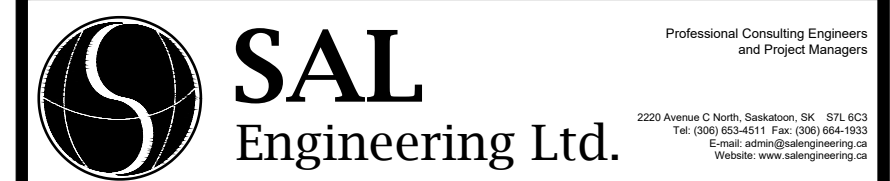
NOTES

1. LOCATION OF ALL EXISTING UTILITIES ARE NOT SHOWN. CONTRACTOR TO DETERMINE LOCATIONS BEFORE CONSTRUCTION START. CONTRACTOR IS RESPONSIBLE FOR DAMAGE TO UTILITIES.
2. MINIMUM DEPTH OF BURY OF SEWAGE FORCE MAIN TO TOP OF PIPE TO BE 3.0 m.
3. CONTRACTOR TO MEET MINIMUM BENDING RADIUS OF PIPE AS PER MANUFACTURER'S SPECIFICATIONS.
4. CONTRACTOR TO RETURN ANY ROADS AFFECTED BY CONSTRUCTION TO ORIGINAL CONDITION, REGRADE AND REGRAVEL AS REQUIRED.
5. CONTRACTOR TO PROVIDE TRAFFIC CONTROL BARRIERS, AND SIGNAGE MEETING APPLICABLE REGULATORY AGENCY REQUIREMENTS DURING CONSTRUCTION.
6. CONTRACTOR TO DISPOSE OF TREES, DEBRIS, AND EXCAVATED MATERIALS AT LOCATION DESIGNATED BY OWNER.
7. AERIAL IMAGERY UNDERLAY MAY NOT REPRESENT ACTUAL SITE CONDITIONS.
8. LEGAL FABRIC SOURCE: INFORMATION SERVICES CORPORATION, SASK SURFACE CADASTRAL.

PRELIMINARY
NOT FOR CONSTRUCTION



NO.	DATE	REVISION	BY	APPD
1	FEB 11 2022	ISSUED FOR 50% REVIEW	RLM	JNM

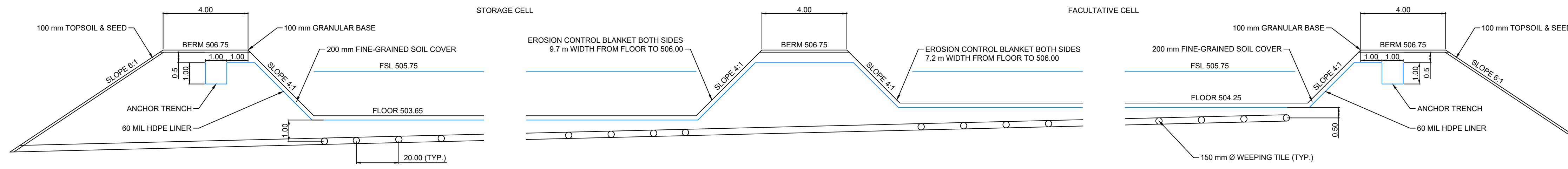


BEARDY'S & OKEMASIS CREE NATION
SEWAGE LAGOON & FORCE MAIN
REPLACEMENT
ISC PROJECT NO. CT603

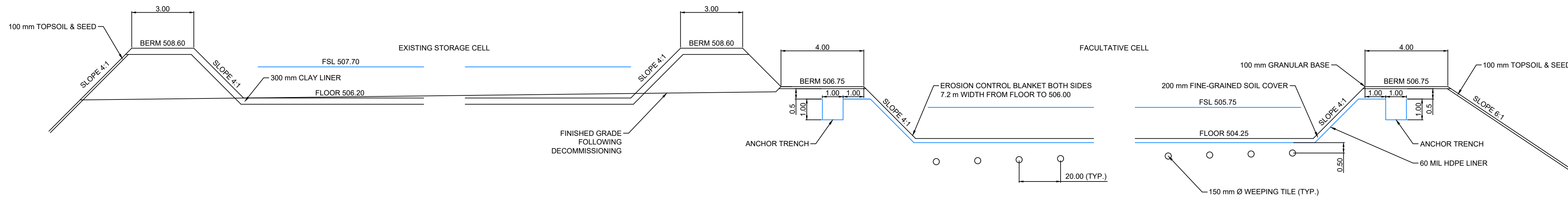
SEWAGE FORCE MAIN REPLACEMENT
PLAN/PROFILE STA 1+400 TO 2+074

PLAN DATE: NOV. 08, 2021 SCALE: 1:1,250

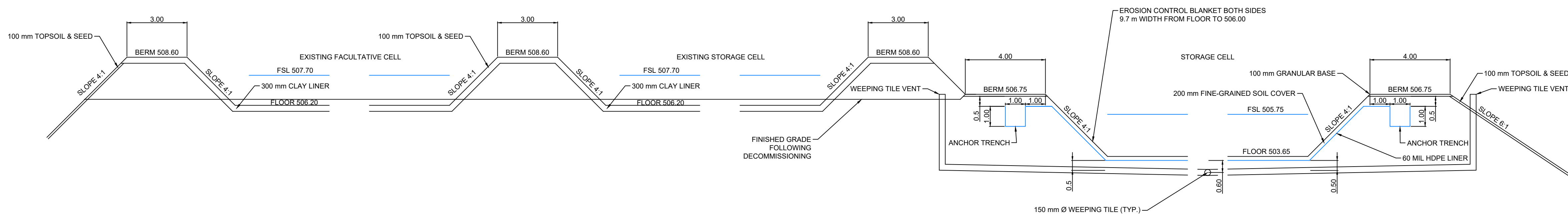
PLAN NO. P-07



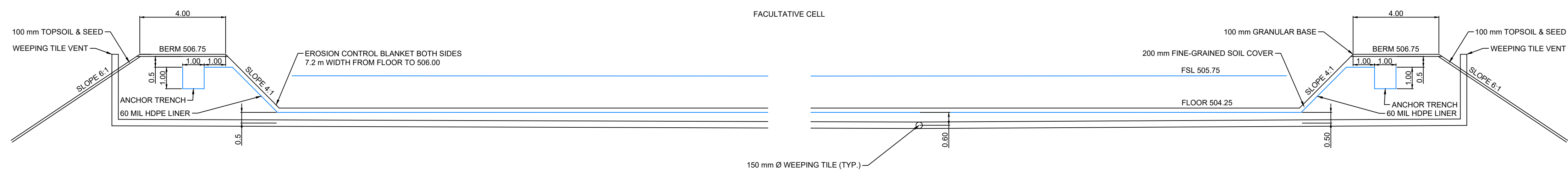
LAGOON CROSS SECTION A-A



LAGOON CROSS SECTION B-B



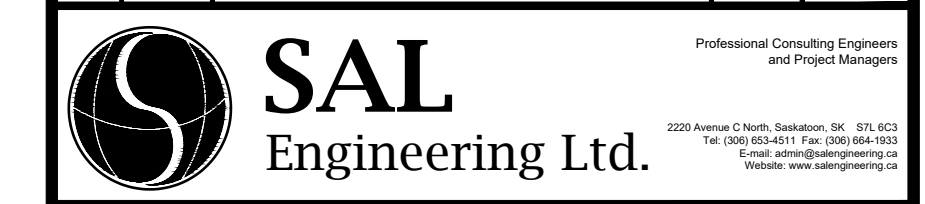
LAGOON CROSS SECTION C-C



LAGOON CROSS SECTION D-D

PRELIMINARY
NOT FOR CONSTRUCTION

1	FEB 11 2022	ISSUED FOR 50% REVIEW	JNM	WCS
NO.	DATE	REVISION	BY	APP'D

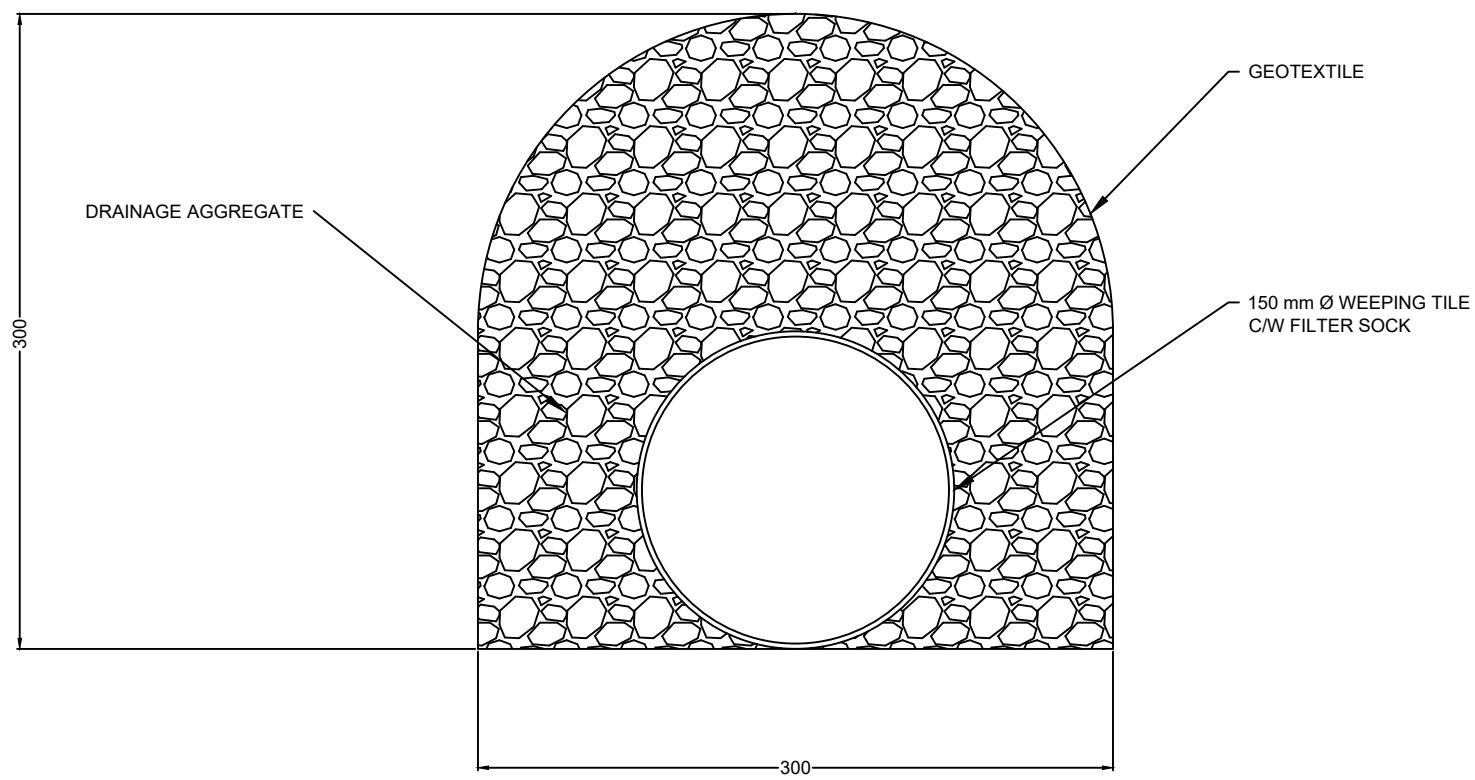


BEARDY'S & OKEMASIS CREE NATION
SEWAGE LAGOON & FORCE MAIN
REPLACEMENT
ISC PROJECT NO. CT603

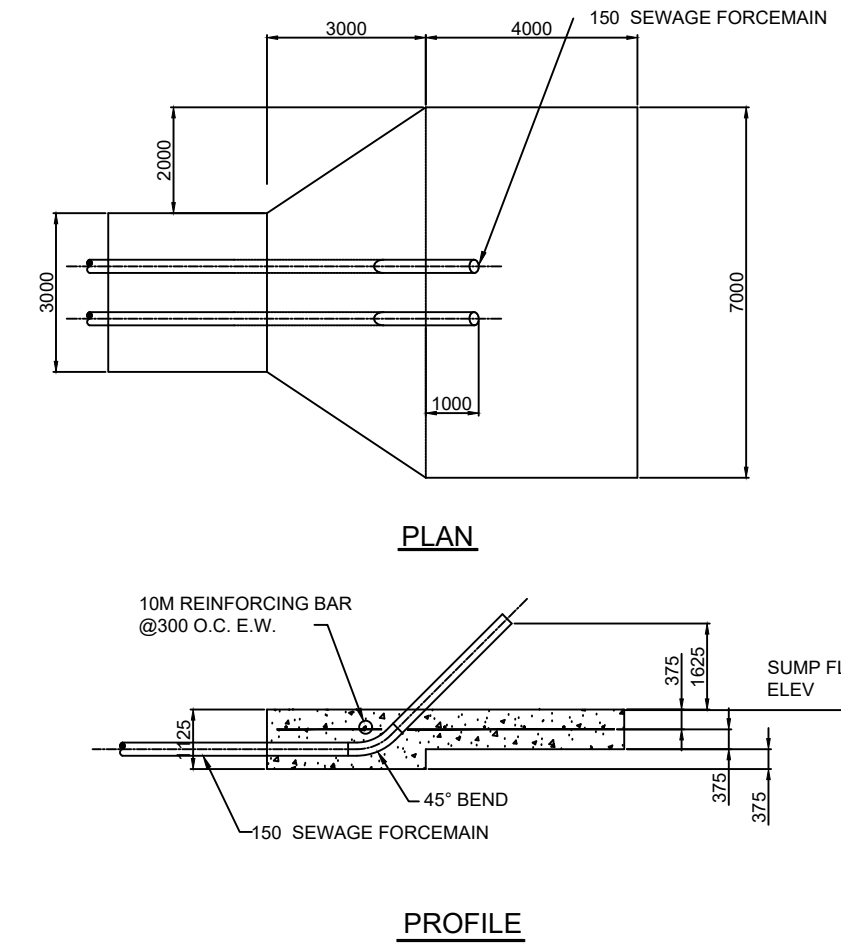
LAGOON CROSS SECTIONS

PLAN DATE: NOV. 08, 2021 SCALE: NTS

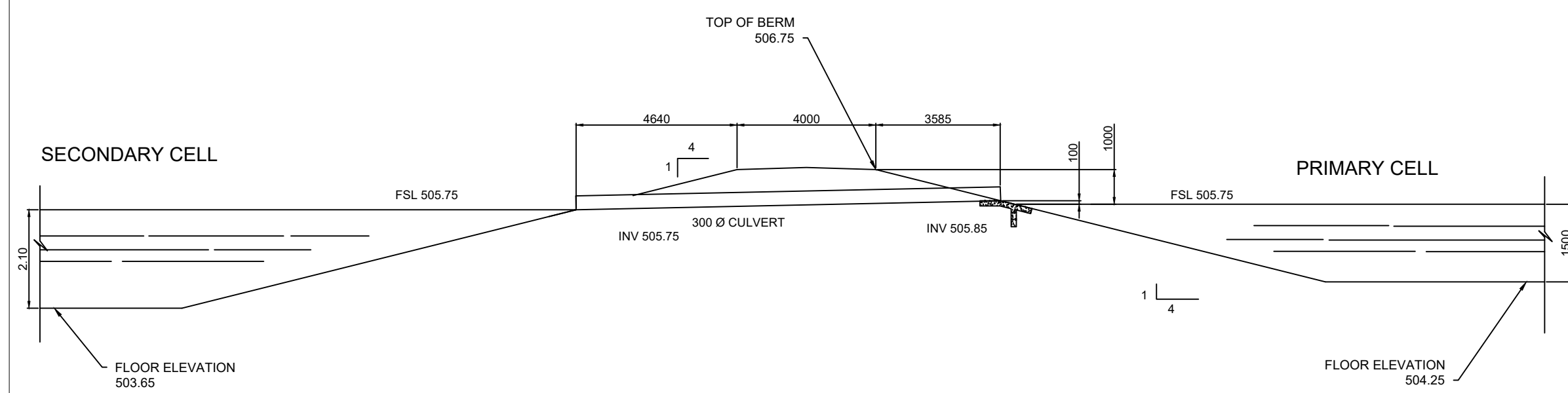
PLAN NO. D-01



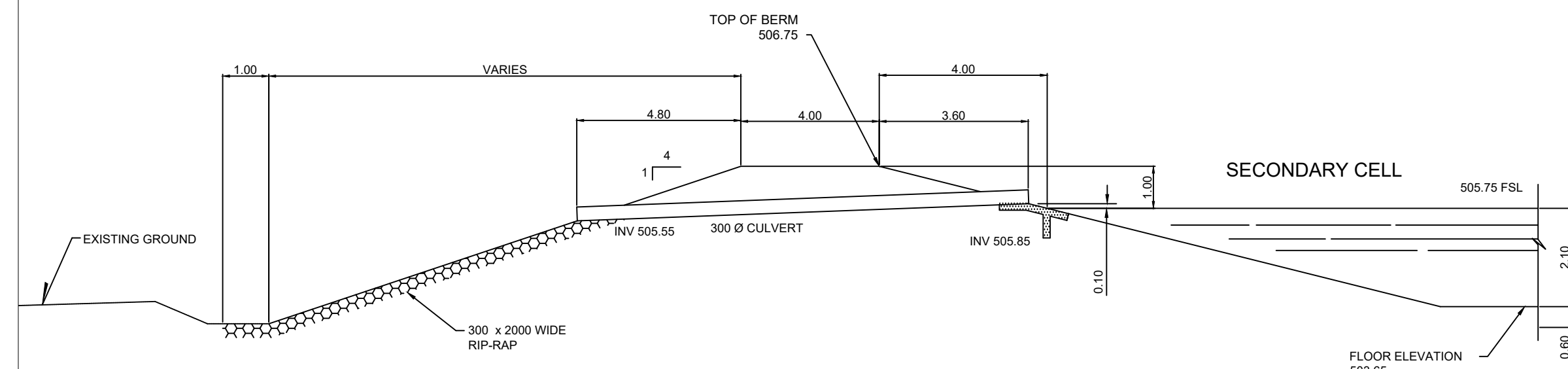
1 TYPICAL WEEPING TILE
NTS DETAIL



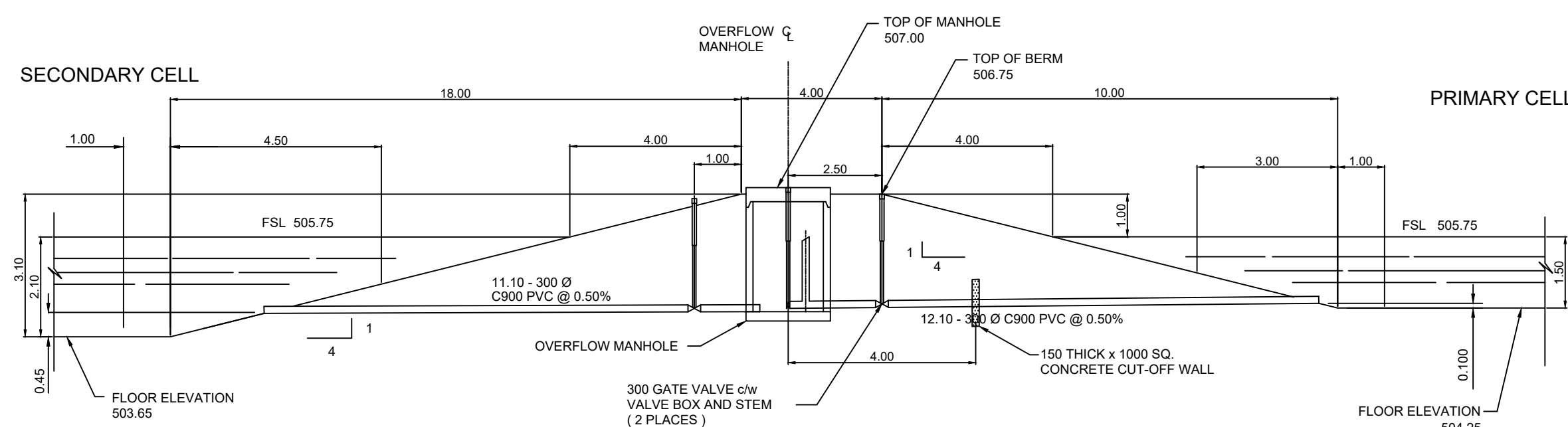
2 INFLUENT PAD
NTS DETAIL



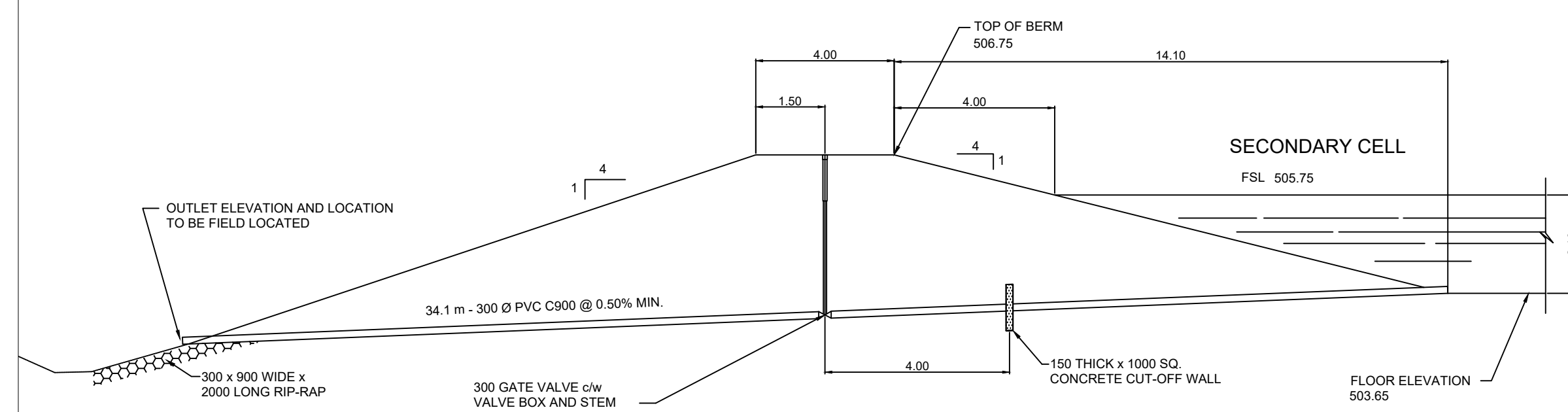
3 FACULTATIVE CELL EMERGENCY OVERFLOW
NTS DETAIL



4 STORAGE CELL EMERGENCY OVERFLOW
NTS DETAIL



5 TRANSFER STRUCTURE
NTS DETAIL



6 EFFLUENT DRAIN
NTS DETAIL

PRELIMINARY
NOT FOR CONSTRUCTION

NO.	DATE	REVISION	BY	APP'D
1	FEB 11 2022	ISSUED FOR 50% REVIEW	JNM	WCS

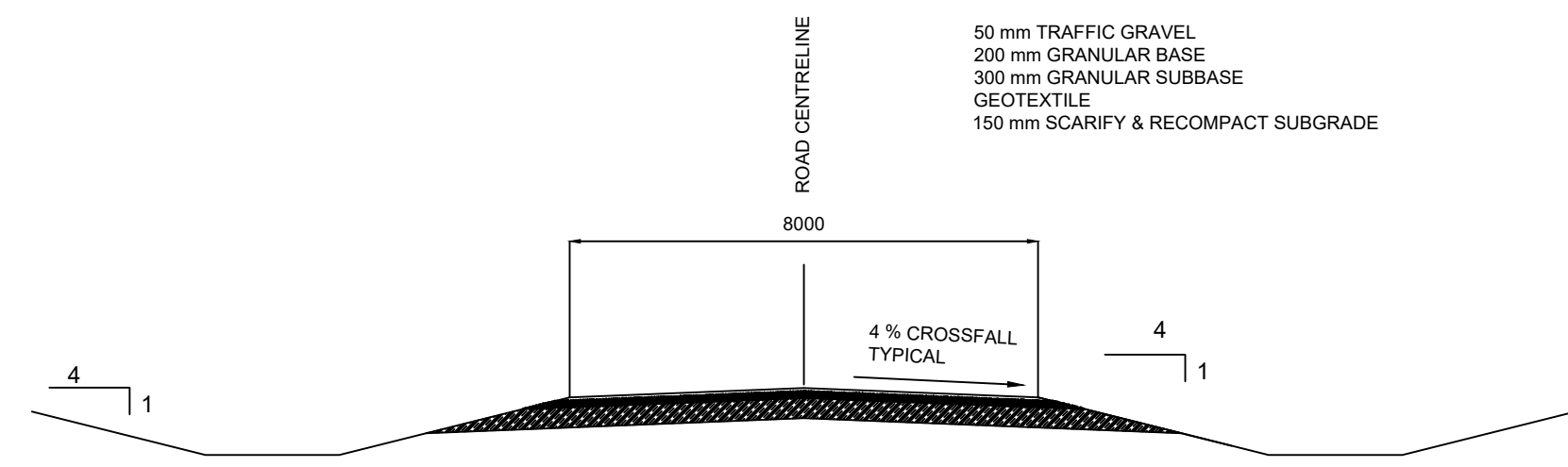


BEARDY'S & OKEMASIS CREE NATION
SEWAGE LAGOON & FORCE MAIN
REPLACEMENT
ISC PROJECT NO. CT603

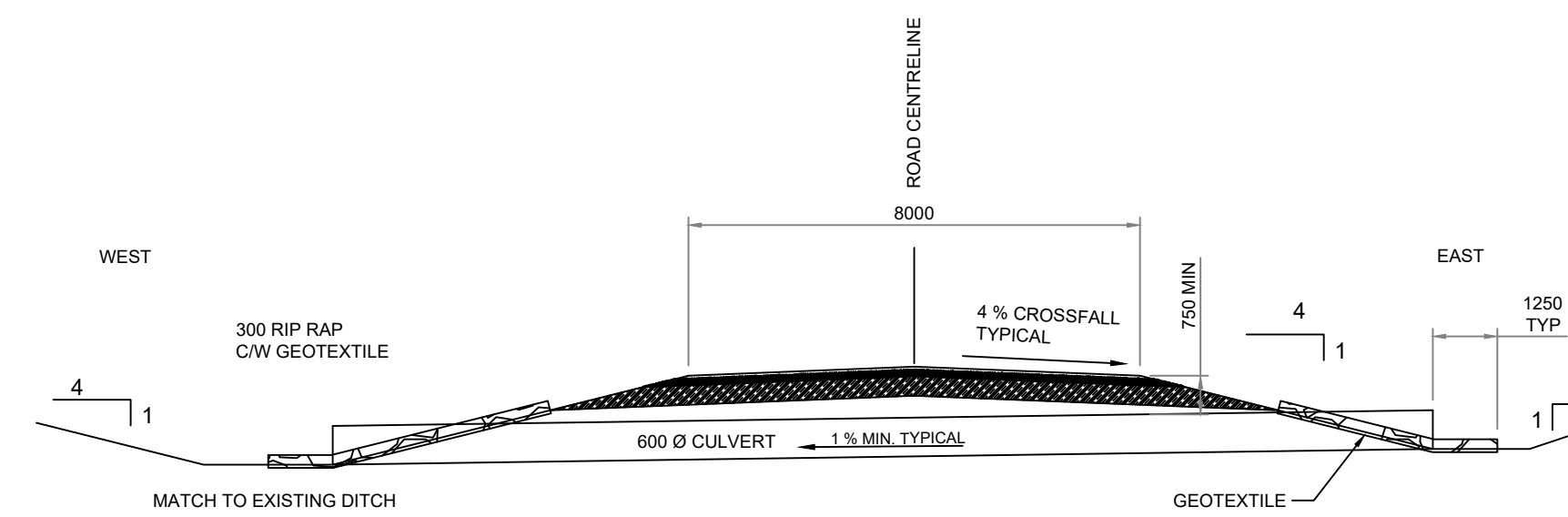
STANDARD DRAWINGS

PLAN DATE: NOV. 08, 2021 SCALE: NTS

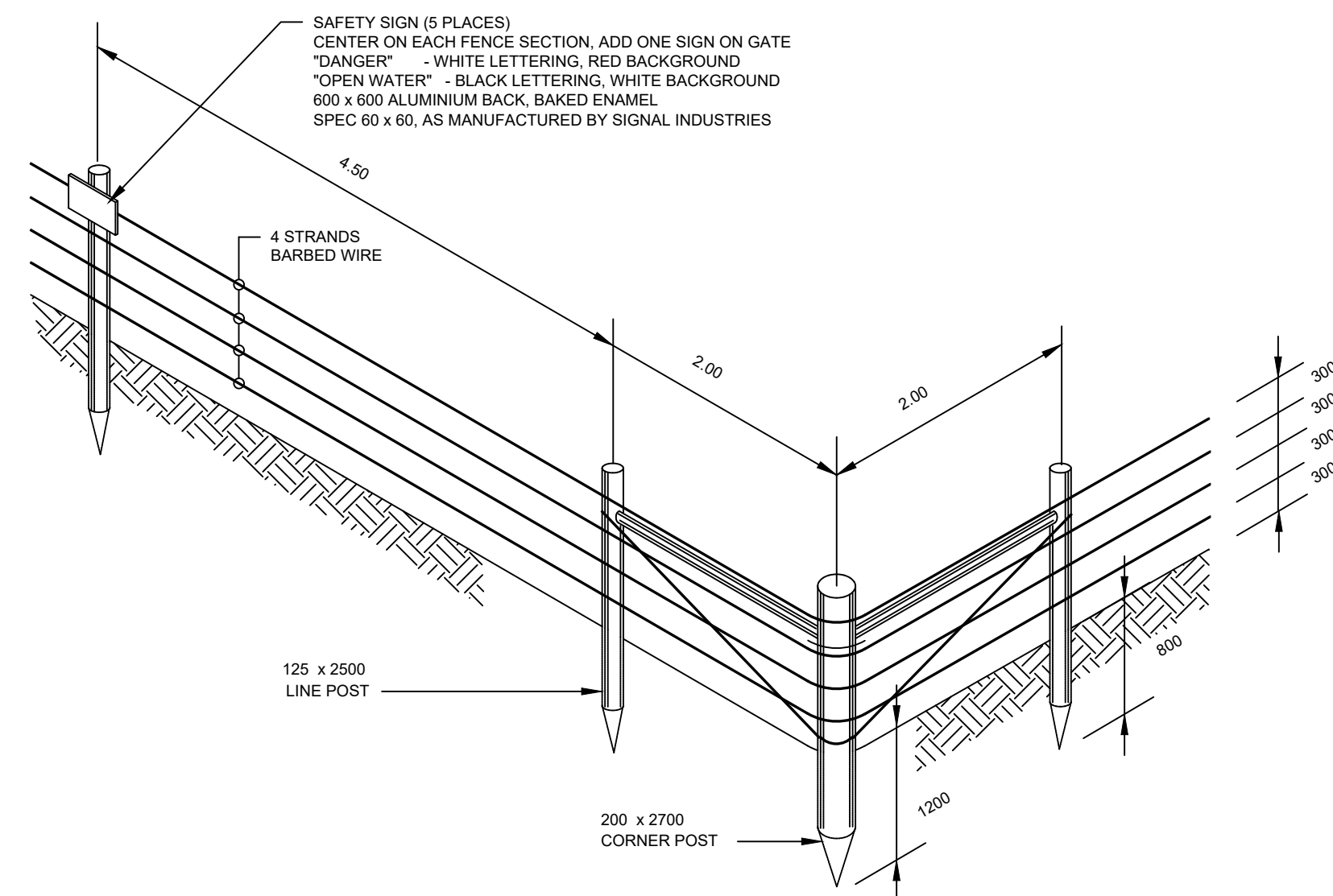
PLAN NO. D-02



7 TYPICAL ACCESS ROAD
NTS DETAIL

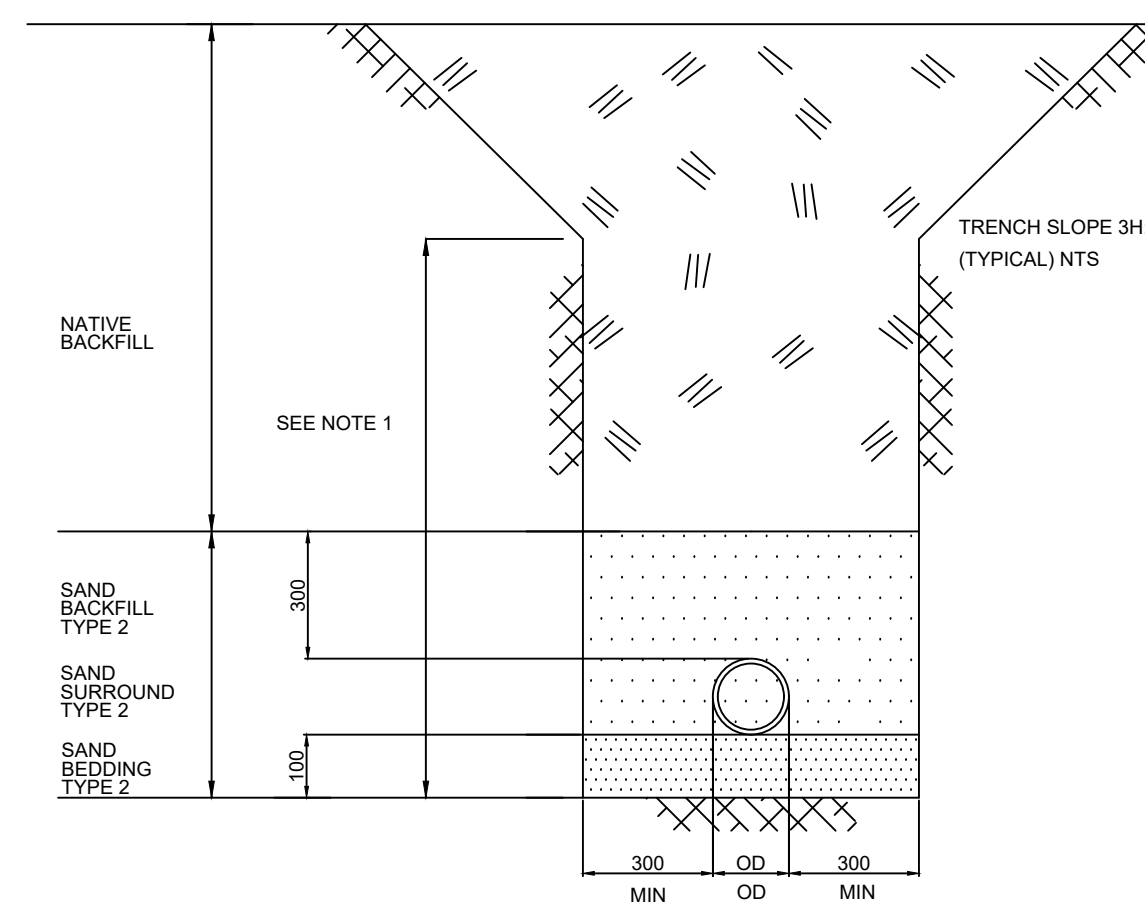


8 TYPICAL ACCES ROAD CULVERT
NTS DETAIL

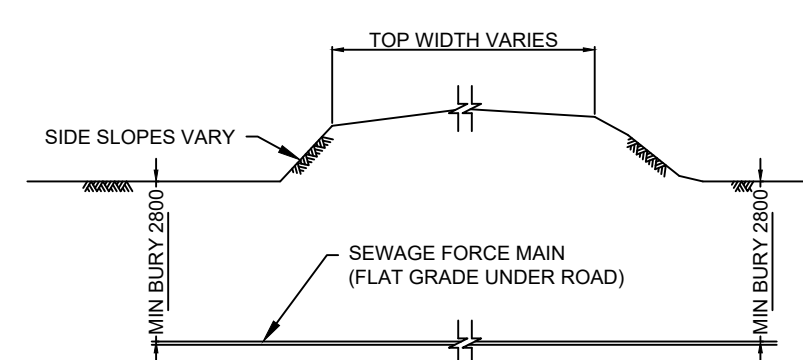


9 TYPICAL FENCE DETAIL
NTS DETAIL

- NOTES
1. TRENCH SECTION TO CONFORM TO SASKATCHEWAN LABOUR, OCCUPATIONAL HEALTH AND SAFETY BRANCH
 2. COMPACT SAND BEDDING (TYPE 2) TO MIN. 98% STANDARD PROCTOR
 3. COMPACT SAND SURROUND AND BACKFILL (TYPE 2) TO MIN. 96% STANDARD PROCTOR
 4. COMPACT NATIVE BACKFILL TO MIN. 96% STANDARD PROCTOR

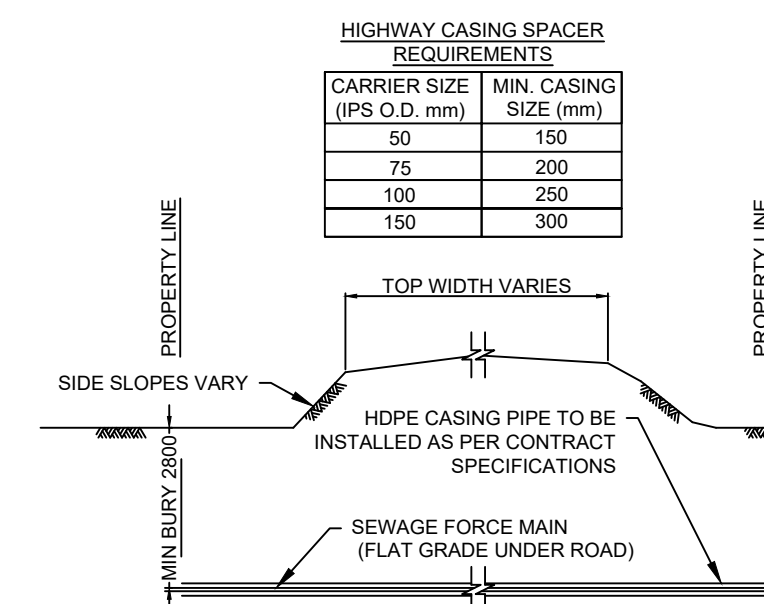


10 TYPICAL TRENCH
NTS DETAIL



- NOTE:
1. GRAVELED MUNICIPAL ROAD CROSSING SHALL BE DIRECTIONAL DRILLED
 2. ACCESS ROAD CROSSINGS SHALL BE DIRECTIONAL DRILLED

11 TYPICAL FIELD APPROACH, MUNICIPAL ROAD
OR ACCESS ROAD DETAIL



- NOTE:
1. HIGHWAY ROAD CROSSINGS SHALL BE DIRECTIONAL DRILLED
 2. LENGTH OF CASING AS NOTED ON PLAN DRAWINGS
 3. CARRIER PIPE TO BE SUPPORTED IN THE ENCASMENT PIPE WITH APPROVED SPACERS LOCATED 150 mm INSIDE ENCASMENT PIPE AT EACH END
 4. HDPE CASING TO HAVE MINIMUM PRESSURE RATING OF DR 11

12 TYPICAL HIGHWAY ROAD CROSSING
NTS DETAIL

PRELIMINARY
NOT FOR CONSTRUCTION

NO.	DATE	REVISION	BY	APP'D
1	FEB 11 2022	ISSUED FOR 50% REVIEW	JNM	WCS

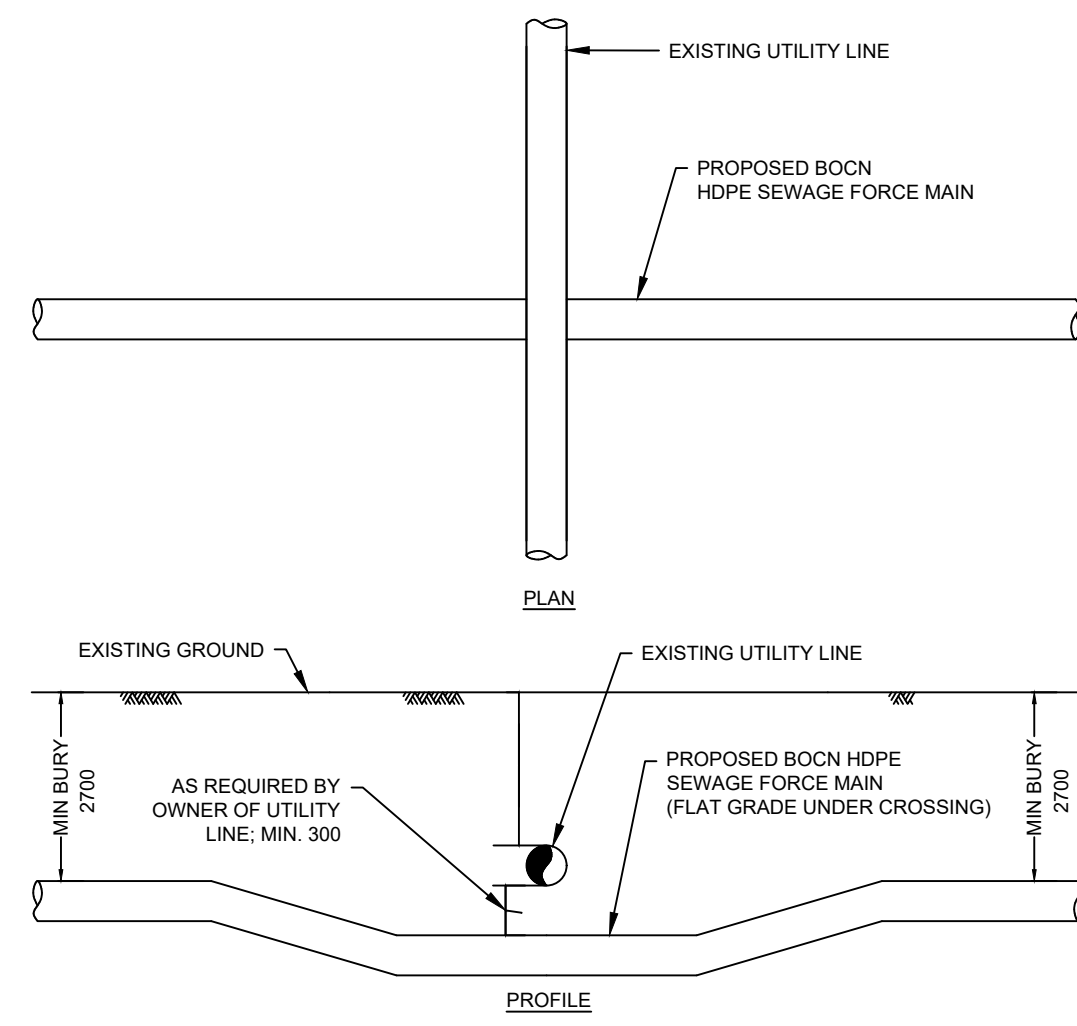
SAL Engineering Ltd.
Professional Consulting Engineers and Project Managers
2207 Avenue C North, Saskatoon, SK S7N 6C3
Tel: (306) 222-1111 Fax: (306) 224-1111
E-mail: info@salsalgroup.com Website: www.salsalgroup.com

BEARDY'S & OKEMASIS CREE NATION
SEWAGE LAGOON & FORCE MAIN
REPLACEMENT
ISC PROJECT NO. CT603

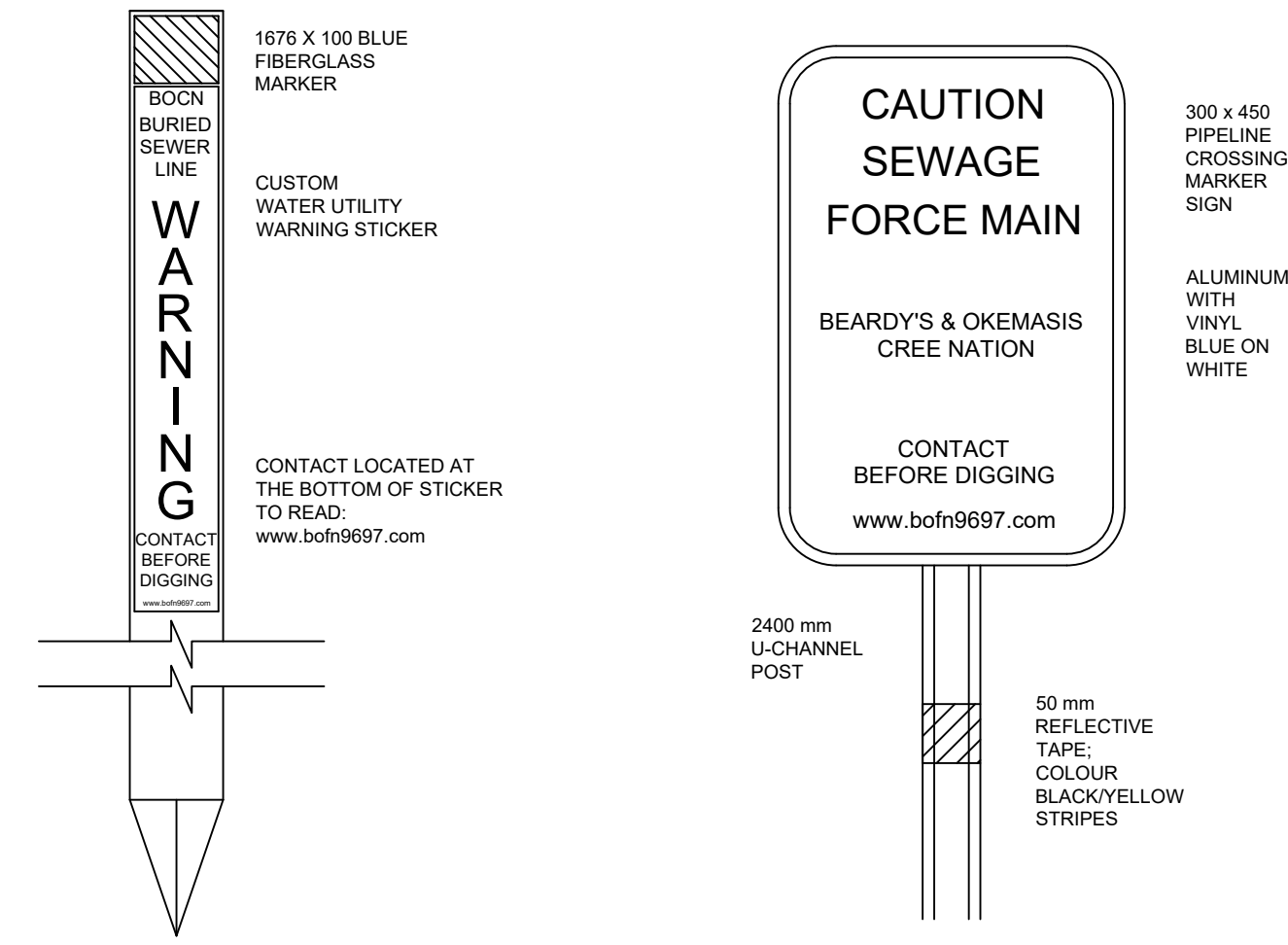
STANDARD DRAWINGS

PLAN DATE: NOV. 08, 2021 SCALE: NTS

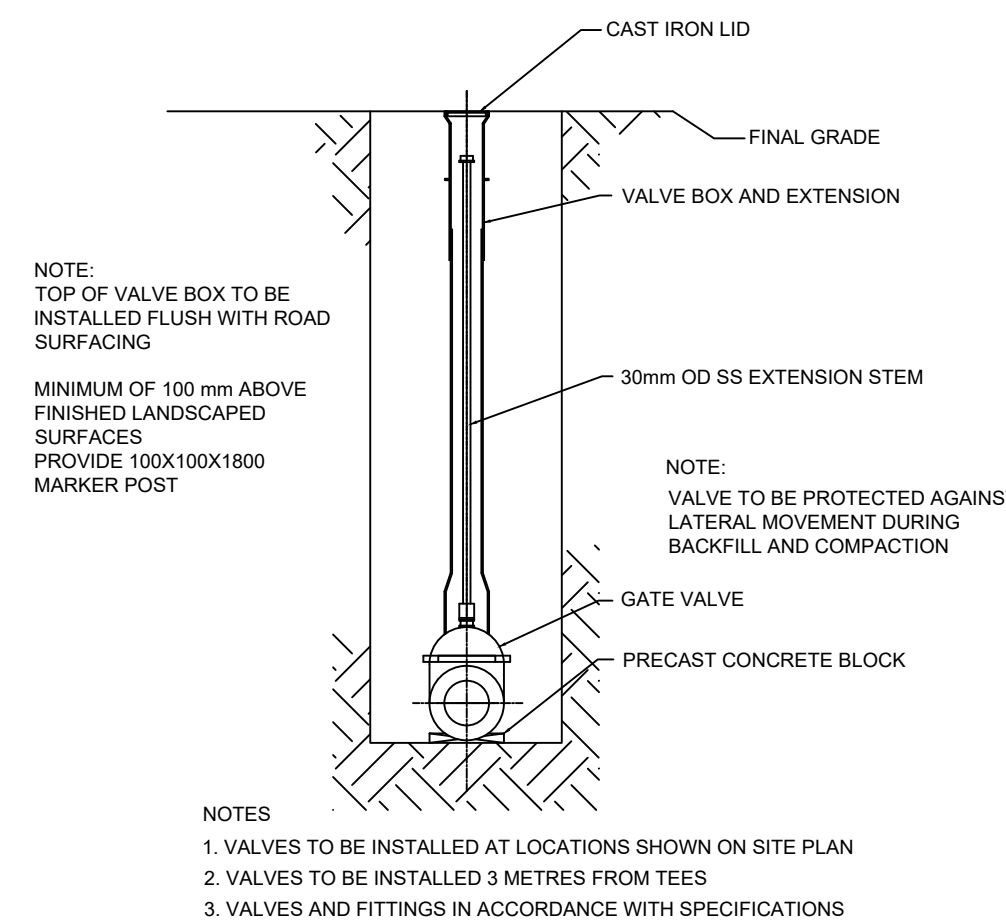
PLAN NO. D-03



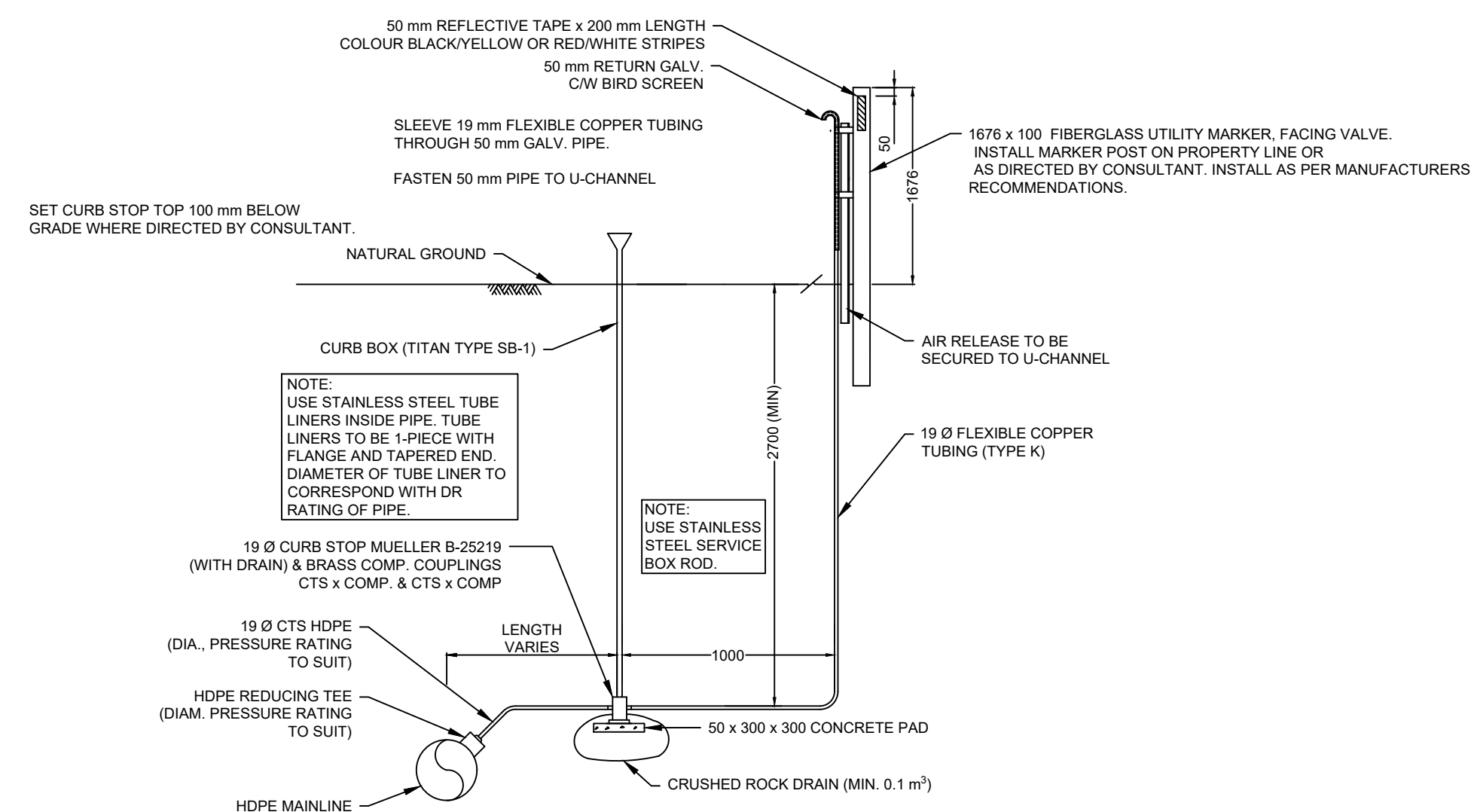
13 TYPICAL UTILITY LINE CROSSING
NTS DETAIL



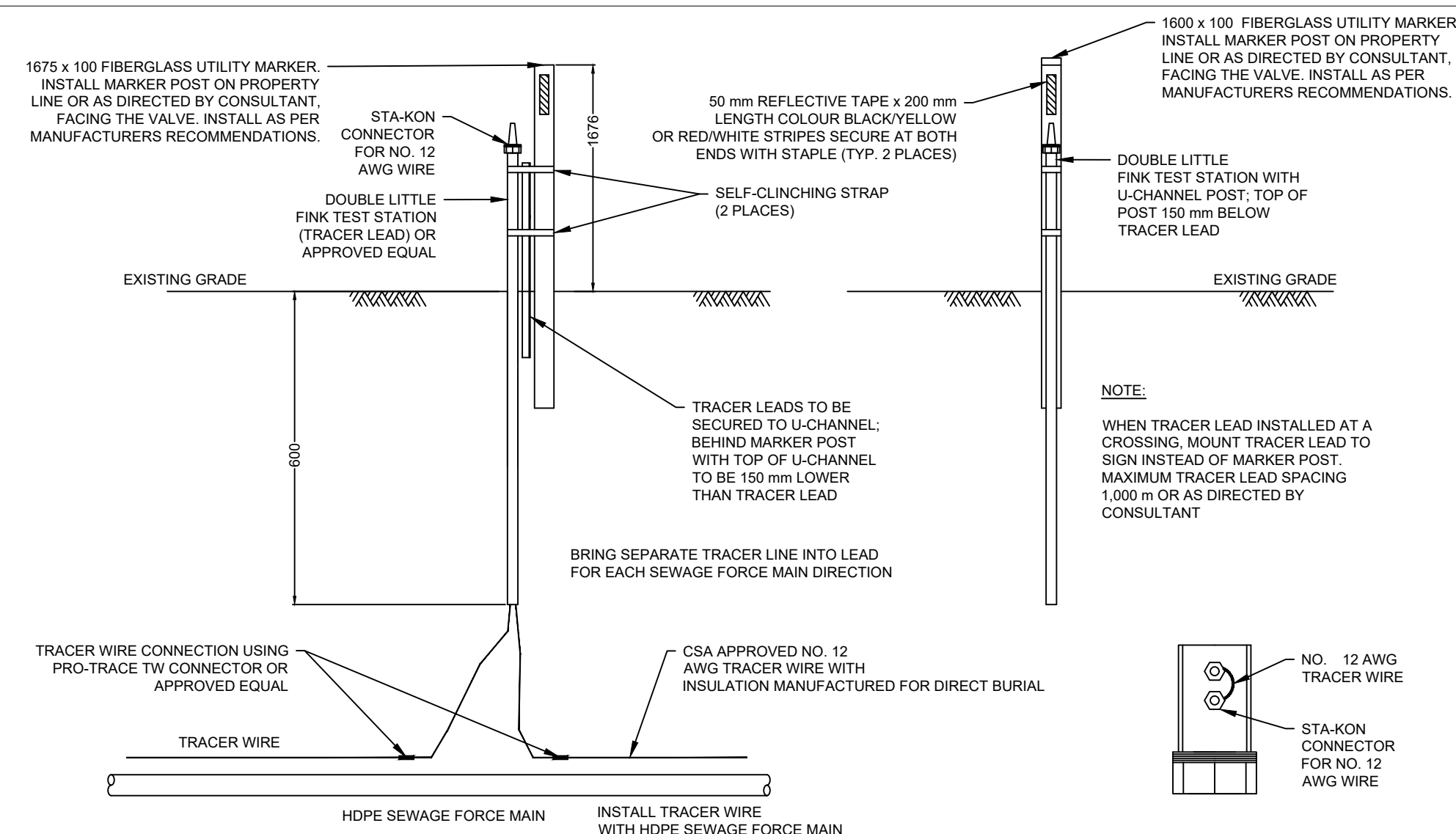
14 TYPICAL FIBERGLASS UTILITY MARKER AND WARNING SIGN
NTS DETAILS



15 TYPICAL VALVE DETAIL
NTS DETAIL



17 TYPICAL AIR RELEASE ASSEMBLY
NTS DETAIL



18 TYPICAL TRACER WIRE
NTS DETAIL

PRELIMINARY
NOT FOR CONSTRUCTION

NO.	DATE	REVISION	BY	APP'D
1	FEB 11 2022	ISSUED FOR 50% REVIEW	JNM	WCS

SAL Engineering Ltd.
Professional Consulting Engineers and Project Managers

BEARDY'S & OKEMASIS CREE NATION
SEWAGE LAGOON & FORCE MAIN
REPLACEMENT
ISC PROJECT NO. CT603

STANDARD DRAWINGS

PLAN DATE: NOV. 08, 2021 SCALE: NTS

PLAN NO. D-04