



# How to Participate During the Federal Impact Assessment *Upper Beaver Gold Project*

---

Agnico Eagle Mines Limited (the Proponent) is proposing the construction, operation, decommissioning and abandonment of an underground and open-pit gold and copper mine located 20 kilometres northeast of Kirkland Lake, in Ontario. As proposed, the Upper Beaver Gold Project includes an on-site metal mill and structures for diverting water. The maximum ore production capacity of the mine is 15,000 tonnes per day, and the maximum ore input capacity of the metal mill is approximately 10,000 tonnes per day, with a mine life of about 16 years. The Project would require the diversion of over 90 million cubic metres of water per year from Beaverhouse Lake downstream to the Misema River.

## **IMPACT ASSESSMENT AGENCY OF CANADA**

The Impact Assessment Agency of Canada (the Agency) is a federal body accountable to the Minister of Environment and Climate Change. The Agency delivers high-quality impact assessments that contribute to informed decision-making on major projects in support of sustainable development.

**The Agency is conducting an impact assessment process for this Project and would like to hear from you.**

## **How can you participate?**

You can **share your views** on the Project, including but not limited to:

- project design, location, timelines, plans for construction and operation, baseline conditions, potential project effects, mitigation measures and cumulative effects;
- how the Project may affect your community's:
  - health, social, and economic conditions;
  - physical and cultural heritage, including any structure, site or thing that is of historical, archaeological, paleontological or architectural significance;
  - current use of lands and resources for traditional purposes; and
- how the Project may affect your community's exercise of rights that are protected under section 35 of the *Constitution Act, 1982*.

# How to Participate During the Federal Impact Assessment

## Upper Beaver Gold Project

In order to help your community engage and share your views on the above, the Proponent will provide your community with an opportunity to:

- provide **Indigenous knowledge** during baseline data collection;
- comment on the list of **valued components and indicators**;
- inform the development of the **effects assessment**;
- inform the development of **mitigation and follow-up program measures**; and
- review the **effects assessment conclusions** and validate the **selected mitigation follow-up program measures**.

By sharing your views on the matters listed above, the Proponent will be able to integrate Indigenous knowledge into the Impact Statement for the Project. Your views can also help us understand how the Project may impact your community and what measures the Proponent needs to propose to reduce or avoid the identified impact.

To help you think about what information to share, please see the specific types of information under the **five key themes** outlined below:

- **health, social, and economic conditions**;
- **physical and cultural heritage**;
- **current use of lands and resources**;
- **impacts on the exercise of rights**; and
- **mitigation and enhancement measures**.

In addition, the **map** provided in **Figure 1**, and the examples of **potential impacts** listed in **Figure 2**, may help you think about the impacts of the Project on these key themes.

For more information on these themes, please see the Agency's **Tailored Impact Statement Guidelines (Guidelines)**, which set out the requirements for the Proponent in preparing an Impact Statement, on the Canadian Impact Assessment Registry at:

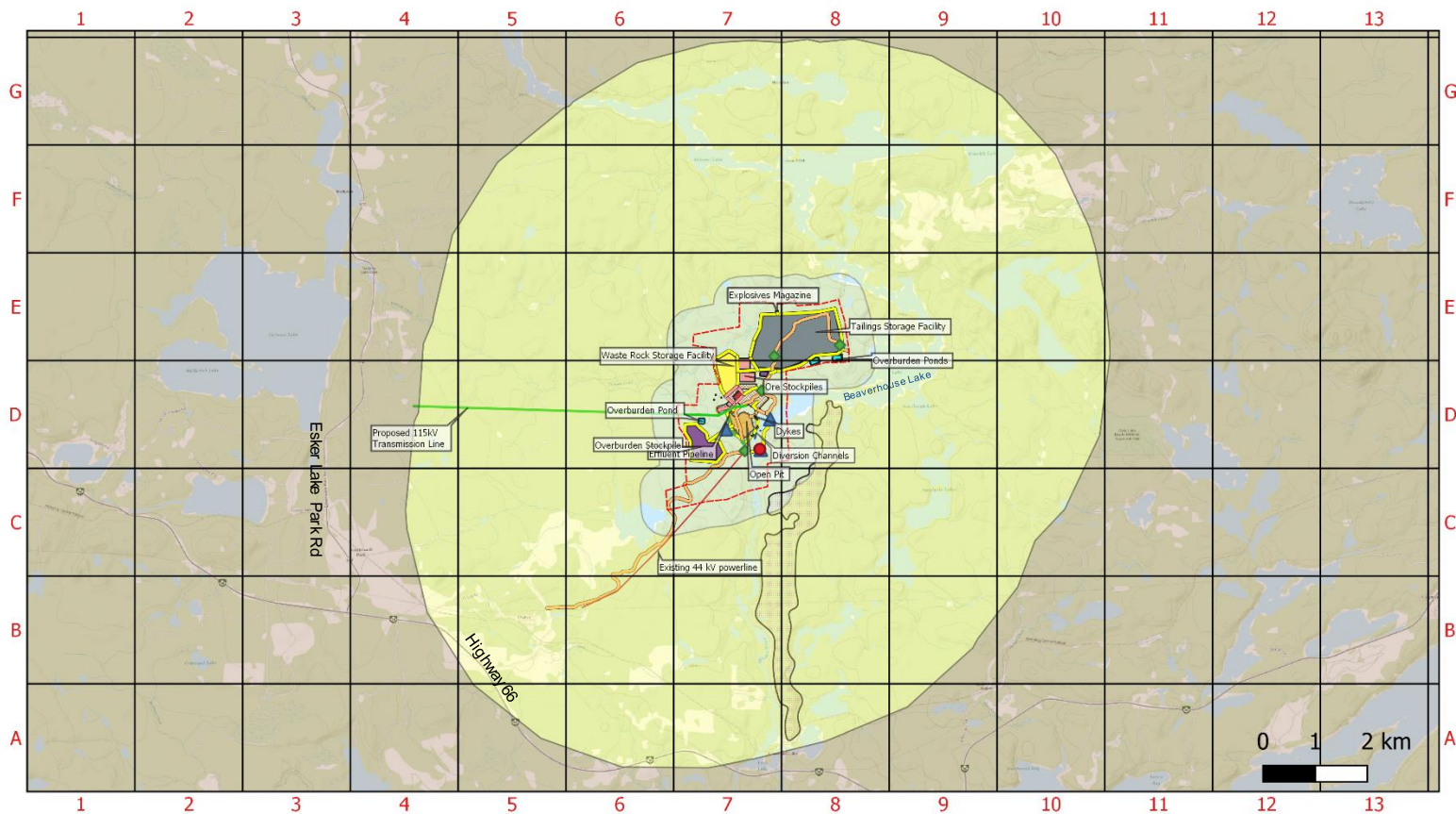
<https://iaac-aeic.gc.ca/050/evaluations/proj/82960>

The Proponent will be engaging with your community to gather information under these **five key themes** in order to understand how the Project may impact your community and what measures the Proponent needs to propose to reduce or avoid the identified impacts.

The Proponent will collaborate with Indigenous communities, as per the **Guidelines**, collect available Indigenous knowledge and expertise and integrate it into its Impact Statement, and support the participation of Indigenous communities in the completion of the Impact Statement.

# How to Participate During the Federal Impact Assessment

## Upper Beaver Gold Project



### Legend

#### Study Areas

- Near the Project Site
- Far from the Project Site

#### Project Components

- Preliminary Project Boundary
- Potential Water Crossings
- Existing Water Crossings

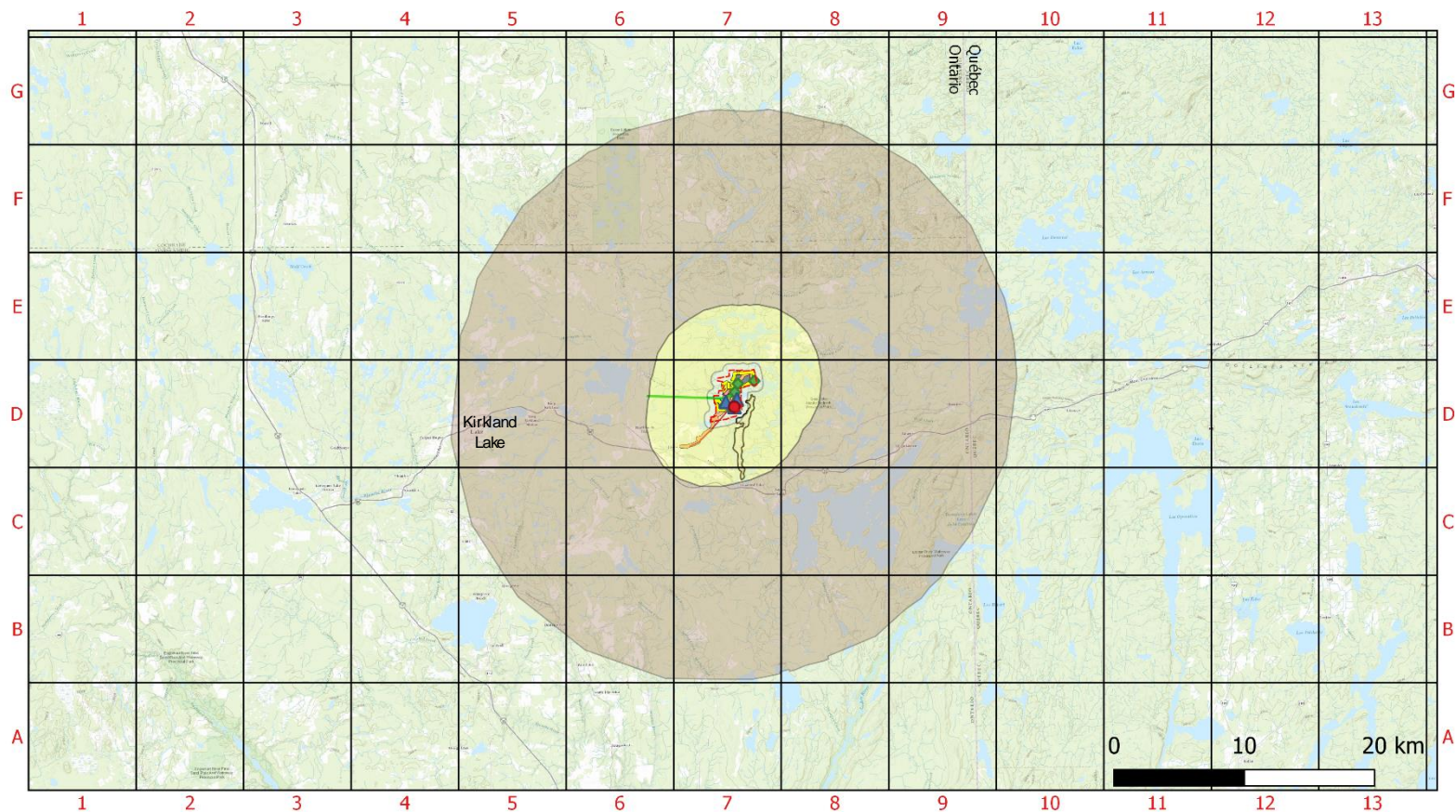
#### Potential Glaciofluvial Deposit Roads

- Processing Plant Area
- Advanced Exploration Road
- Existing Road
- Proposed Road

Figure 1 : Upper Beaver Gold Project Site Map

# How to Participate During the Federal Impact Assessment

## Upper Beaver Gold Project



### Legend



#### Study Areas

- Near the Project Site
- Far from the Project Site

#### Project Components

- Preliminary Project Boundary
- Potential Water Crossings
- Existing Water Crossings
- Potential Glaciofluvial Deposit Roads
- Processing Plant Area

- Advanced Exploration Road
- Existing Road
- Proposed Road

Figure 2 : Upper Beaver Gold Project, Area Overview

# How to Participate During the Federal Impact Assessment

Upper Beaver Gold Project

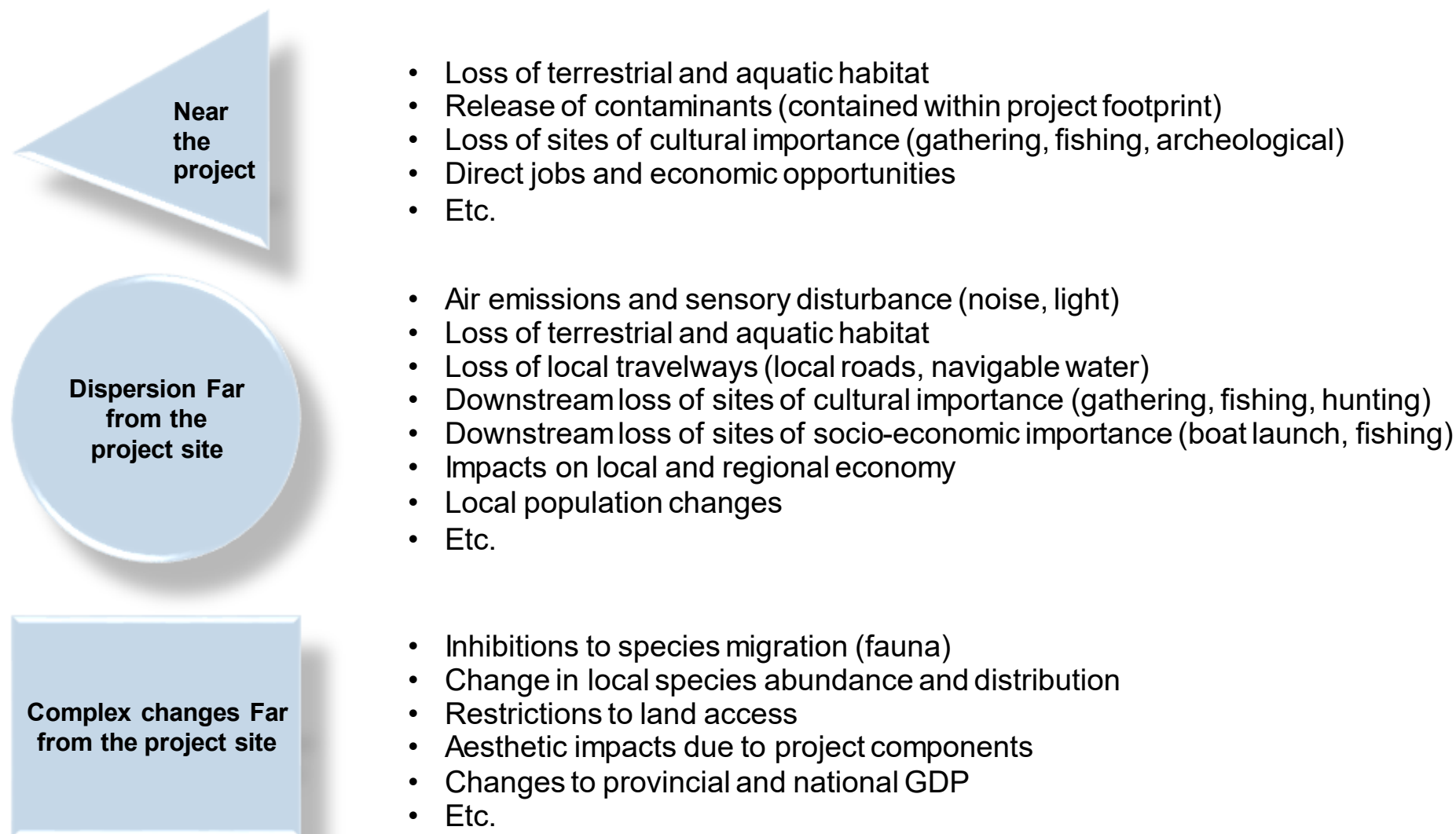


Figure 3 : Potential Impacts of the Project at different distances from the Project site: near the project site, far from the project site, and complex changes far from the project site

## Potential topics to discuss with the Proponent

The Agency requires the Proponent to engage with your community regarding potential positive and adverse effects the Project may have on the following **five key themes**:

- your community's **health, social, and economic conditions**;
- your community's **physical and cultural heritage**;
- your community's **current use of lands and resources for traditional purposes**;
- **potential impacts of the project to the exercise of Aboriginal and treaty rights**; and
- **mitigation and enhancement measures**.

If there is any other information not listed below that would support the analysis of predicted effects on your community, please inform the Agency and the Proponent.

### Health, Social, and Economic Conditions

- your community's existing health, social and economic conditions (e.g. physical and mental health, and social well-being)
- existing infrastructure and services in your community (e.g. healthcare services, housing, transportation and roads)
- sites or areas that are used by your community, such as for camping, hunting, trapping, fishing, gathering, harvesting and enjoying the land, and the number of people that use each site or area identified;
- drinking water sources (permanent, seasonal, periodic, or temporary)
- country foods (animals and plants) that are eaten or used by your community, including how much and how frequently they are eaten or used, and where they are harvested
- current use of lands and water bodies for economic activities that may be impacted by the Project including hunting, recreational and commercial fishing, trapping, outdoor recreation, use of seasonal cabins, outfitters and forestry
- potential changes to health, social, and economic conditions resulting from the Project, and the positive and negative consequences of these changes

### Physical and Cultural Heritage

- burial sites
- spiritual sites, including rivers and watercourse
- teaching areas used to transfer knowledge and oral histories between generations
- cultural values and experiences of being on the land
- local languages
- sacred, ceremonial or culturally important places, plants, animals, objects, beings, or things
- places with archaeological potential or artefacts
- sites your community used historically

# How to Participate During the Federal Impact Assessment

## Upper Beaver Gold Project

---

### Current Use of Lands and Resources for Traditional Purposes

- where you use lands and water bodies for traditional purposes, including for camping, hunting, trapping, fishing, gathering, harvesting, boating, portaging, recreation, and ceremonial or teaching purposes
- how frequently you practice the activities, and for how long
- resources used by your community, such as plants, animals, medicines, and their cultural connection to your community
- access to areas used for lands and resources, including travel ways, navigable waterways and waterbodies
- overall quality of the experience of the practice (e.g., how will changes in air quality, noise levels, landscape, and the presence of others affect your enjoyment and experience of the land and traditional practices?)
- any traditional activities for economic purposes

### Potential Impacts of the Project to the Exercise of Aboriginal and Treaty Rights

- a general description of your community's Aboriginal and/or Treaty rights exercised in the area near the Project and far from the Project, and information on how rights will be affected by the Project
- the quality and quantity of resources required to support your community's exercise of rights
- physical access to the resources required to exercise rights, including the timing, seasonality, distance from your community
- the experience associated with the exercise of rights, and the connection to the landscape
- specific areas of cultural importance where rights are exercised
- Indigenous governance systems and Indigenous laws associated with the exercise of rights
- information about members within your community, and their role in the exercise of rights (e.g., women, men, elders, youth, people with disabilities)
- views on potential adverse impacts that may result from the residual and cumulative effects identified by the Proponent

# How to Participate During the Federal Impact Assessment

## Upper Beaver Gold Project

### Mitigation and Enhancement Measures

Sections 9.1.5, 9.2.3, 9.3.3 and 10.4 of the Guidelines indicate that the Agency expects the Proponent to cooperate with Indigenous communities to identify preferred mitigation and enhancement measures to avoid, minimize, offset or otherwise accommodate for potential adverse impacts on Indigenous peoples or their rights, as well as to optimize the Project's benefits for their communities. Specific types of information that you may consider sharing can include, but are not limited to:

- suggestions for mitigation and enhancement measures to any potential effect on:
  - human health;
  - social valued components;
  - economic conditions;
- suggestions for measures to accommodate potential adverse impacts of the Project on your community's ability to exercise rights; and
- views on potential adverse impacts on the exercise of rights that have not been fully mitigated or accommodated as part of the impact assessment.

Please share your views by using the **Submit a Comment** feature on the Registry page

[Reference Number: 82960]

<https://iaac-aeic.gc.ca/050/evaluations/proj/82960>

#### Contact Information:

Spencer Roth, Crown Consultation Coordinator

Impact Assessment Agency of Canada

Tel: 647-355-7318

Email: [UpperBeaver@iaac-aeic.gc.ca](mailto:UpperBeaver@iaac-aeic.gc.ca)

Attention: Upper Beaver Gold Project

#### Important Note

Any information submitted to the Agency to inform this project assessment will be made publicly available as part of the project file, and may be posted online via the Canadian Impact Assessment Registry (Reference #82960) subject to certain exceptions related to privacy, security or confidentiality. The Agency's Submission Policy

(<https://iaac-aeic.gc.ca/050/evaluations/participation/conditions>) describes what submitted information can be shared publicly, and what should remain private. For further information on how we protect your privacy, please refer to the Privacy Notice (<https://www.iaac-aeic.gc.ca/050/evaluations/protection>).

Indigenous Knowledge shared in confidence is protected from disclosure under section 119 of the *Impact Assessment Act*, except if written consent is provided. Also, the Indigenous knowledge shared in confidence could be shared with certain parties if the information is publically available, or if disclosure is necessary for procedural fairness and natural justice. Should you wish to provide any comments or documents that contain confidential or sensitive information that should be protected from release to the public, please contact Spencer Roth at 647-355-7318, or at [upperbeaver@iaac-aeic.gc.ca](mailto:upperbeaver@iaac-aeic.gc.ca) **before** submitting the information. This will ensure that your submission is handled appropriately. Note, that the Agency will consult with you prior to disclosing Indigenous knowledge shared in confidence under an exception.