

Table E1. Natural Heritage Information Centre Search Results

Area Name	Area Id:	Area Type:	Significance Level:	Centroid Zone:	Centroid Easting:	Centroid Northing:	Datum:	Decimal Latitude:	Decimal Longitude	Description:	Management Organisation:	Protection:	Ownership:
NEWMARKET WETLAND	18505	Wetland	Other	176,240,124,879,323	624012	4879323	NAD83	44.0565	-79.4517	The locally significant Newmarket Wetland is situated in downtown Newmarket, bounded by Prospect Street, Sprigley Street, Queen Street and Slickwood Court. While this wetland is less than 2 hectares in size, it was evaluated because it is one of the few wetlands in the Town of Newmarket and on the Schomberg Clay Plain (OMNR - Aurora District, 2000). The wetland is 0.75 ha in size and is situated on the floodplain of Bogart Creek, a tributary of the Holland River. A smaller tributary enters the Newmarket Wetland from the south and the wetland is in turn connected to the adjacent Bogart Creek via two channels (OMNR - Aurora District, 2000).		Oak Ridges Moraine Conservation Plan	
POTTAGEVILLE WETLAND COMPLEX	3916	Wetland	Provincial	176,100,124,874,223	610012	4874223	NAD83	44.0129	-79.6275	A Provincially significant wetland complex, made up of 43 individual wetlands, on the Oak Ridges Moraine, composed of three wetland types (0.6% fen, 93.1% swamp, 6.3% marsh) (Kwik et al., 1994).			
PRESTON LAKE WETLAND	3917	Wetland	Other	176,299,124,871,623	629912	4871623	NAD83	43.9862	-79.38	A Non-Provincially significant wetland complex, made up of three individual wetlands, on the Oak Ridges Moraine, composed of two wetland types (22.2% swamp, and 77.8% marsh) (Power et al., 1984).			
SNOWBALL WETLAND COMPLEX	3941	Wetland	Other	176,195,124,872,623	619512	4872623	NAD83	43.997	-79.5094	A Non-Provincially significant wetland complex, made up of 14 individual wetlands, on the Oak Ridges Moraine, composed of two wetland types (60% swamp, 40% marsh) (Giza and Kwik, 1990).			
UPPER PEPPERLAW WETLAND #5	3957	Wetland	Other	176,392,124,884,923	639212	4884923	NAD83	44.1042	-79.2605	A Non-Provincially significant wetland on the Oak Ridges Moraine, composed of only one wetland type (100% swamp) (Konecny and Beshiri, 1986).			
VANDORF BOG WETLANDS	3969	Wetland	Other	176,328,124,874,023	632812	4874023	NAD83	44.0073	-79.3432	A Non-Provincially significant wetland complex made up of 17 individual wetlands, on the Oak Ridges Moraine, composed of three wetland types (6% bog, 85% swamp, 9% marsh) (Power et al., 1984).			
VIVIAN BOG	3971	Wetland	Other	176,355,124,884,123	635512	4884123	NAD83	44.0977	-79.307	A Non-Provincially significant wetland, on the Oak Ridges Moraine, composed of three wetland types (29.7% bog, 46.0% swamp, 24.3% marsh) (Hooper et al., 1987).			
WHITCHURCH-HIGHLAND BOG	3975	Wetland	Other	176,319,124,872,123	631912	4872123	NAD83	43.9904	-79.3549	A Non-Provincially significant wetland complex, made up of nine individual wetlands, on the Oak Ridges Moraine, composed of three wetland types (5.2% bog, 57.9% swamp, 36.9% marsh) (Huizer et al., 1987).			
WHITE ROSE - PRESTON LAKE WETLAND COMPLEX	18493	Wetland	Provincial	176,290,124,871,223	629012	4871223	NAD83	43.9828	-79.3913	The provincially significant White Rose - Preston Lake Wetland Complex occurs on the Oak Ridges Moraine in the Towns of Aurora, Richmond Hill and Whitchurch-Stouffville. The wetland complex is bounded by Bethesda Road, Vandorf Road, Bayview Avenue and Warden Avenue (OMNR - Aurora District, 2001). The wetland incorporates four previously evaluated wetlands: the White Rose Wetlands (MNR 1983a, TRCA 1985), Bloomington Wetlands (MNR 1985), Simeon Forest Wetlands (1983b) and Preston Lake Wetlands (MNR 1984). These wetlands, and additional wetlands not previously evaluated, were examined in 1996, 1998-2000 (OMNR - Aurora District, 2001). The inventoried wetlands were combined into one wetland complex because they are all situated in headwater areas for the Rouge River and the Holland River watersheds. Each individual wetland is located within 750 metres of its nearest neighbouring wetland. The wetlands are linked by stream corridors, adjacent forested uplands or by agricultural lands and hedgerows (OMNR - Aurora District, 2001). This large and diverse wetland complex is noteworthy for its four kettle lakes, its two kettle bogs and its adjacent upland woodlands (OMNR - Aurora District, 2001).		Oak Ridges Moraine Conservation Plan	
WHITE ROSE COMPLEX	3976	Wetland	Other	176,284,124,871,523	628412	4871523	NAD83	43.9856	-79.3987	A Non-Provincially significant wetland complex, made up of five individual wetlands, on the Oak Ridges Moraine, composed of three wetland types (8.3% bog, 16.7% fen, 75.0% swamp) (Gerson et al., 1983).			
WILSON CREEK MARSH	8960	Wetland	Other	176,155,114,899,723	615511	4899723	NAD83	44.2415	-79.5533	A Non-Provincially significant wetland, composed of two wetland types (46% swamp and 54% marsh) (Hooper and Kennedy, 1985).			
WRIGHT'S MARSH	8959	Wetland	Other	176,122,124,893,023	612212	4893023	NAD83	44.1818	-79.5961	A Non-Provincially significant wetland, composed of three wetland types (18% fen, 36% swamp and 46% marsh) (Houser, 1994).			

ENVIRONMENTALLY SIGNIFICANT AREAS AND AREAS OF NATURAL AND SCIENTIFIC INTEREST

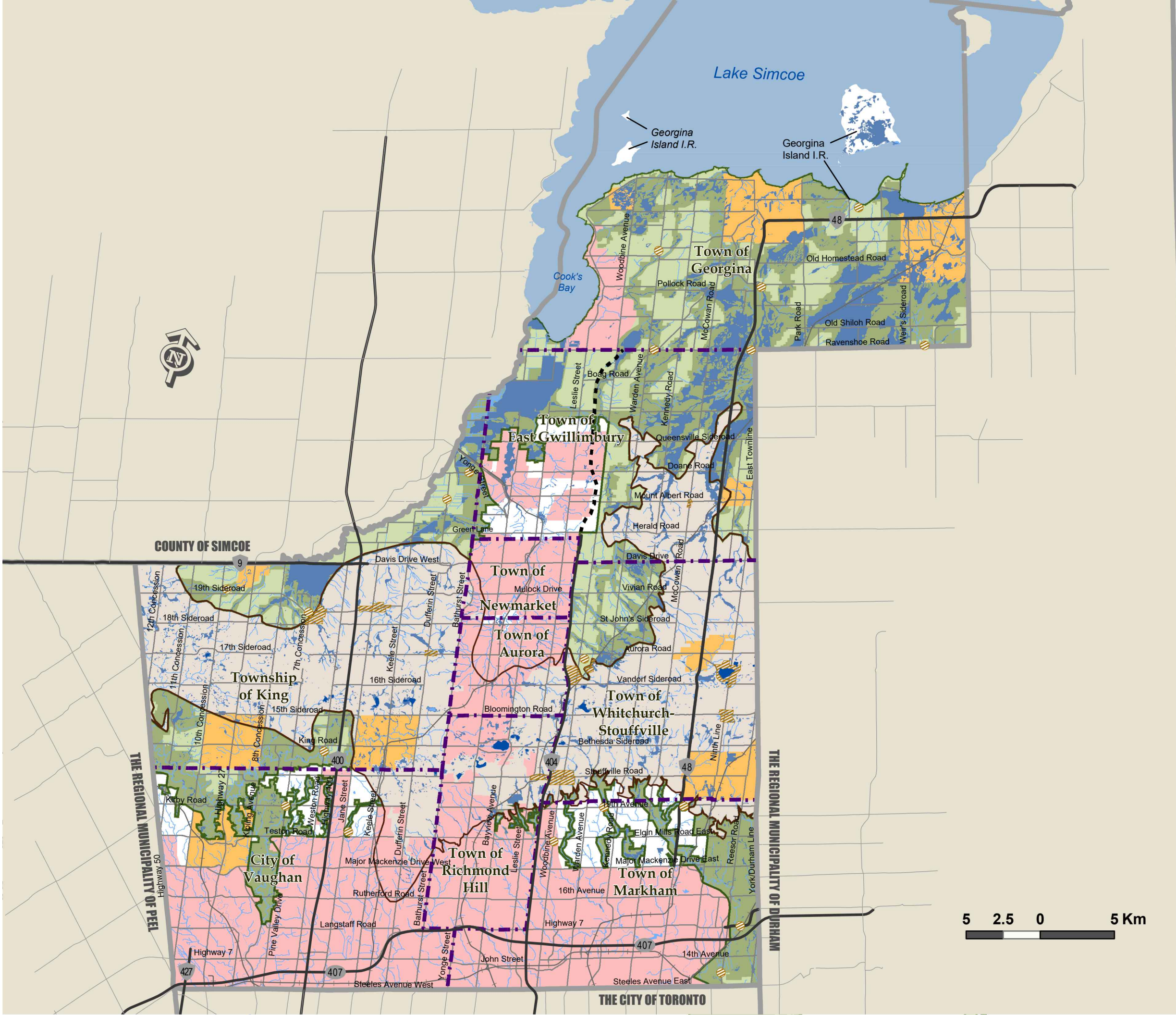
-  Environmentally Significant Area
-  Earth Science Areas of Natural and Scientific Interest
-  Life Science Areas of Natural and Scientific Interest
- Oak Ridges Moraine Conservation Plan**
 -  Oak Ridges Moraine Boundary
 -  Oak Ridges Moraine Plan Area
- Greenbelt Plan**
 -  Greenbelt Plan Area Boundary
 -  Greenbelt Protected Countryside / Hamlet
 -  Natural Heritage System
-  Urban Area
-  Towns and Villages
-  Hamlet
- Provincial Highways**
 -  Existing
 -  Controlled Access Highway
 -  Under Construction
- Municipal Boundary**
 -  Municipal Boundary
 -  Regional Boundary



Produced by: Geomatics
 Planning and Development Services Department
 © Copyright, The Regional Municipality of York, August, 2010
 © Copyright, The Regional Municipalities of Durham and Peel, County of Simcoe, City of Toronto
 © Queen's Printer for Ontario 2003-2010, Includes Greenbelt and Oak Ridges Moraine Boundaries and Water Features

KEY HYDROLOGIC FEATURES

-  Wetland
-  Kettle Lake
-  Permanent or Intermittent Stream
-  Oak Ridges Moraine Conservation Plan
-  Oak Ridges Moraine Boundary
-  Oak Ridges Moraine Plan Area
-  Greenbelt Plan
-  Greenbelt Plan Area Boundary
-  Greenbelt Protected Countryside / Hamlet
-  Natural Heritage System
-  Urban Area
-  Towns and Villages
-  Hamlet
-  Provincial Highways
-  Existing
-  Under Construction
-  Municipal Boundary
-  Regional Boundary



Produced by: Geomatics
 Planning and Development Services Department
 © Copyright, The Regional Municipality of York, August, 2010

© Copyright, The Regional Municipalities of Durham and Peel, County of Simcoe, City of Toronto
 © Queen's Printer for Ontario 2003-2010, Includes Greenbelt and Oak Ridges Moraine Boundaries and Water Features