

# Regional Assessment in the Ring of Fire Area

PLANNING THE REGIONAL ASSESSMENT

INFORMATION SESSION FOR FOUR RIVERS WEBINAR SERIES – MARCH 18, 2021



Impact Assessment  
Agency of Canada

Agence d'évaluation  
d'impact du Canada

Canada

# Presentation Outline

---

1. Purpose of the Presentation
2. What is a Regional Assessment
3. Regional Assessment in Ring of Fire Area
4. Elements of a draft Terms of Reference
5. Links and Contact Information



# What are Regional Assessments

---

- Studies in areas of **existing projects** or **anticipated development** to inform planning and management of cumulative effects and inform project impact assessments
- Allow the Government of Canada to go beyond project-specific impact assessments to understand the **regional context** and provide more comprehensive analyses to help **inform future project-specific impact assessment decisions**
- Regional assessment could be used to inform and identify:
  - Baseline against which to assess the incremental impact of a discrete project
  - Mitigation measures for future projects
  - Potential impacts on rights and interests of Indigenous peoples
  - Guidance for managing cumulative effects

# Who Conducts a Regional Assessment

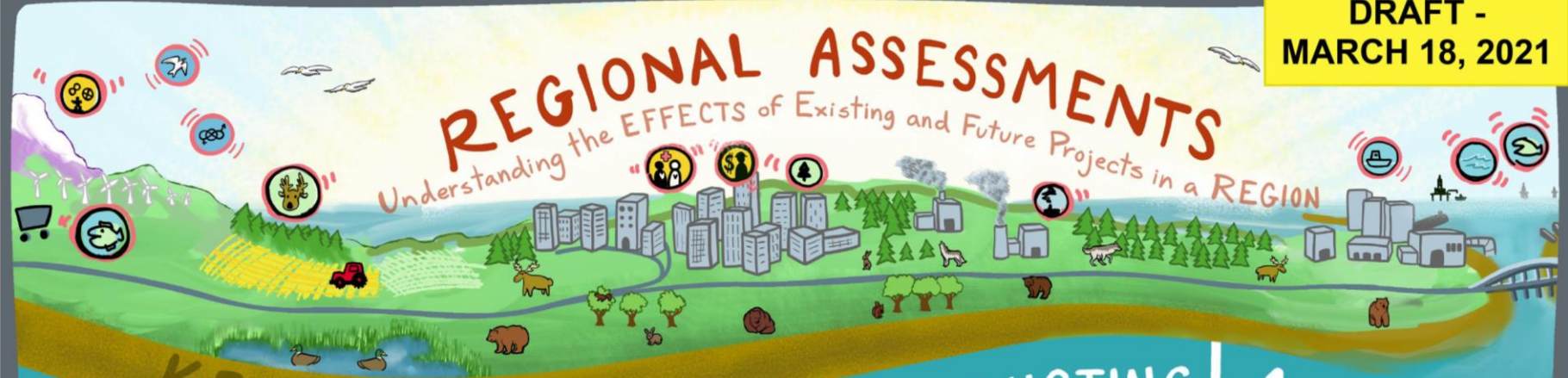
---

- The Minister of Environment and Climate Change is responsible for establishing a **committee** or authorizing the **Agency** to conduct a regional assessment.
- If the region is partly or entirely outside of federal lands, the Minister can enter into an **agreement** or **arrangement** with another jurisdiction for the joint conduct of the regional assessment.
- The Minister must establish or approve a **terms of reference** for the regional assessment and appoint or approve the appointment of a **committee**, if applicable.



# REGIONAL ASSESSMENTS

Understanding the EFFECTS of Existing and Future Projects in a REGION



## KEY STAGES

### 1 DETERMINING A NEED for a REGIONAL ASSESSMENT

### 2 PLANNING

### 3 CONDUCTING a regional assessment

### 4 RESULTS



### PRINCIPLES

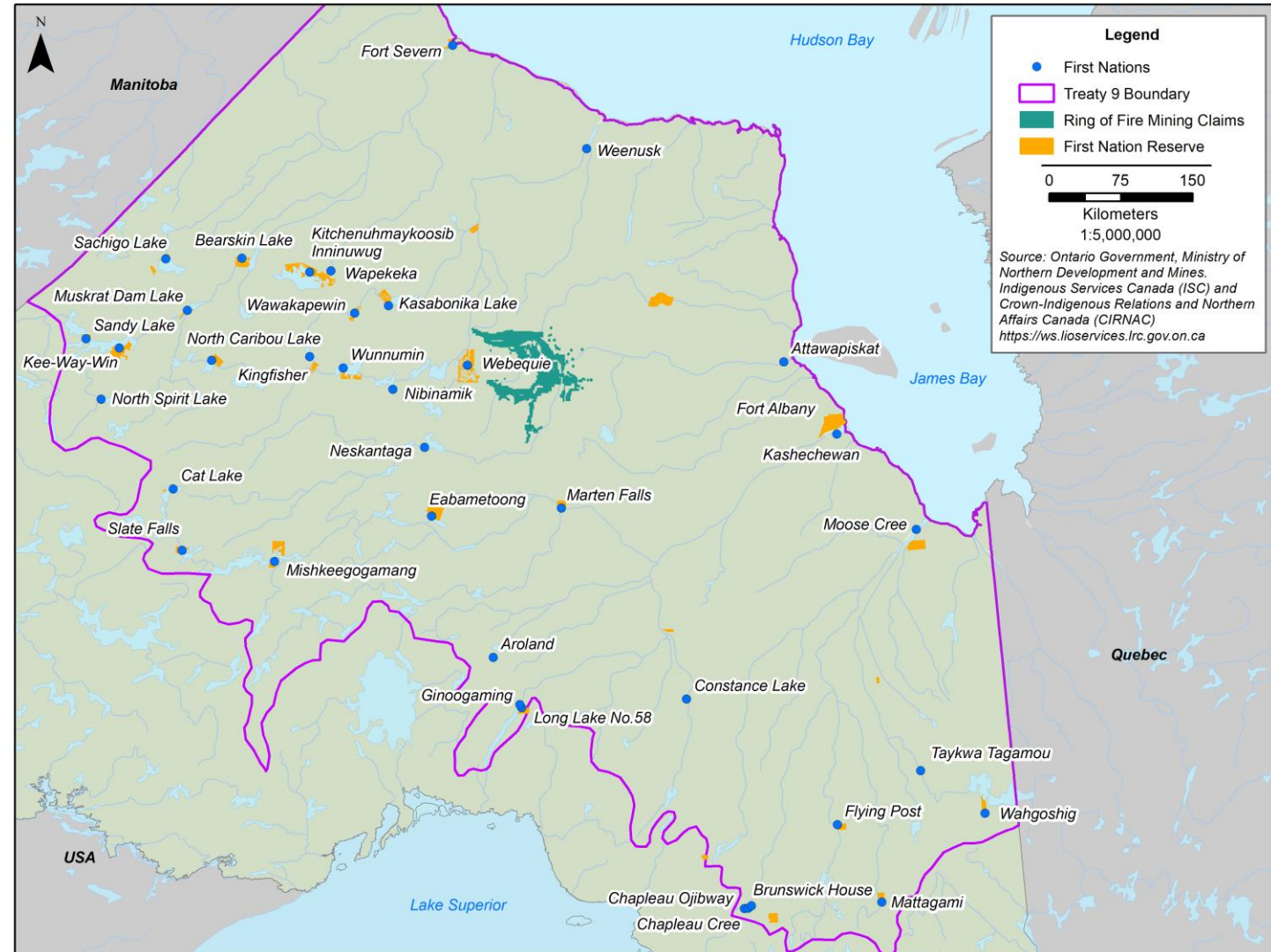
- FLEXIBLE PROCESS & Tailored CONTENT** (Illustrated with a bird and sun)
- Weaving Indigenous Knowledge & SCIENCE** (Illustrated with a gear and a person)
- upholding SUSTAINABLE DEVELOPMENT VISION** (Illustrated with a globe and people)
- EFFICIENT, FAIR, PROCESS** (Illustrated with a person and a checklist)
- Participation & TRANSPARENCY** (Illustrated with people and a screen)

# Comparison: Project Impact Assessment Versus Regional Assessment

	Project Assessment	Regional Assessment
<b>Applies to</b>	Individual, designated project as defined on the Project List regulation	Existing and future physical activities in a region
<b>Purpose</b>	Determine the effects of a proposed project and mitigation	Purpose defined on an RA basis, to inform and improve the effectiveness and efficiency of subsequent project-specific IAs
<b>IA or RA required Decision making</b>	Agency decides if an IA is required (Planning Stage)	Minister decides if a RA is required Public may request RA
<b>Conduct</b>	Proponent (provides information), Agency or Panel	Agency or Committee
<b>Timeline</b>	In Timeline regulations	Timelines set by Minister in Terms of Reference
<b>Other Jurisdiction</b>	Cooperation, Substitution or Joint Panel	Minister may enter into an agreement or arrangement
<b>Information Required set out in</b>	Tailored Impact Statement Guidelines	Terms of Reference
<b>Decision</b>	Minister's Decision statement with conditions, Project may proceed if it complies with conditions	Report to Minister, RA must be considered at various steps of Project IA

# Context: Regional Assessment in the Ring of Fire Area

Indigenous peoples (Treaty 9)  
Environment  
Geography (shield/lowlands)  
Mineral potential/resources



# Indigenous Engagement to Date

---

- In October 2020, the *Impact Assessment Agency of Canada* reached out to 26 communities and 5 aggregate organizations to start planning the Regional Assessment in the Ring of Fire area
- 13 Indigenous communities and organizations identified their interest and received grant funding
- What we heard
  - Expectation for significant involvement in the Regional Assessment process;
  - Limited capacity due to COVID-19 restrictions and other priorities;
  - Multiple on-going assessment processes in the Ring for Fire area resulting in challenges



# Elements of a Terms of Reference

---

- Agency wants your views to inform the design of the Regional Assessment process, and the development of the Terms of Reference
- Broad elements of the **Terms of Reference** are:
  - Goal
  - Objectives
  - Boundaries (assessment area and study area)
  - Procedures, administration and reporting
  - Assessment priorities
  - Outcomes



# Goal of Regional Assessment

To provide information and analysis regarding future developments in the Ring of Fire area and their potential effects in order to inform and improve impact assessments and other planning and decision-making processes in a way that helps protect the environmental, health, cultural, social and economic conditions of the area while also creating opportunities for sustainable economic development.

Source: Ring of Fire Information Sheet November 2020



# Objectives

---

Objectives are meant to support the **Goal** of the Regional Assessment.

The proposed objectives are to:

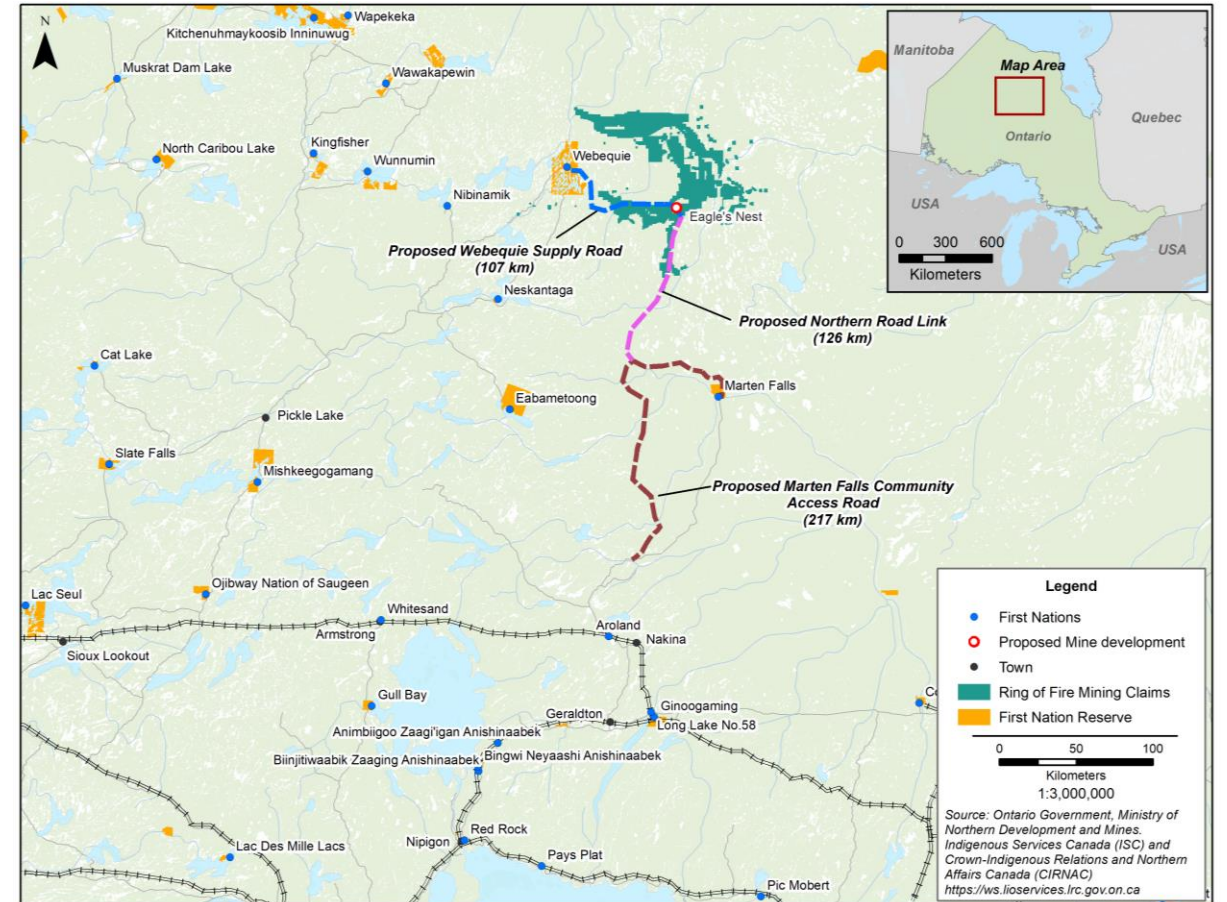
- Provide information, knowledge and analysis related to key regional-scale environmental, health, cultural, social and economic conditions, values, and issues, with consideration and integration of both Indigenous knowledge and scientific information.
- Identify and recommend mitigation measures and other potential and innovative approaches for addressing potential positive and adverse effects (both project-specific and cumulative) as part of future decision-making, including potential impacts on Indigenous peoples.
- Provide an understanding of the regional context that can be used in considering and evaluating effects, in order to inform future impact assessments and other relevant regulatory processes, and the planning and management of cumulative effects in a manner that fosters sustainability.



# Boundaries of the Regional Assessment

**Assessment Area:** An area centred on the Ring of Fire mineral deposits in northern Ontario which reflects the underlying geological formations that represent the Ring of Fire mineral deposits. This area encompasses the future activities upon which the Regional Assessment's analysis of effects and associated recommendations will focus

**Study Area(s):** In conducting the Regional Assessment, there will be one or more Study Areas defined specific to the environmental, health, cultural, social or economic condition that is being studied



# Procedures, Administration and Reporting

---

Regional Assessment proposed to be conducted by a 5 member Committee

- Appointed by Minister
- Knowledge and experience; knowledge of the interests and concerns of indigenous peoples; no conflict of interest
- Supported by Secretariat
- Ensure meaningful participation
- Mandate in Committee's Terms of Reference

Regional Assessment Reporting and Timelines:

- Registry established and maintained
- Information used in the Regional Assessment will be publically accessible
- Final Report within 18 months of Committee establishment (to be confirmed)

# Advisory Supports

---

Committee will establish and seek information and advice from advisory supports

The role of the advisory supports are to assist the Committee in identifying, accessing, analyzing and using information that is relevant to the Regional Assessment

Proposed advisory supports:

1. Indigenous Knowledge / Perspectives
  2. Scientific, Technical and Economic
- Member from within or outside of government
  - Experience relevant to the Regional Assessment

# Assessment Priorities

---

- The Regional Assessment, in identifying and considering potential positive and adverse effects, will focus on a number of specified “**Assessment Priorities**”.
- **Assessment Priorities** will represent key environmental, social, health, cultural or economic components and issues which may be affected by future development in the Assessment Area, but which are often challenging to address solely through individual project-level assessments and decisions, making a regional-scale approach to effects assessment and management appropriate and beneficial.
- Agency is seeking input on the Assessment priorities from the public, Indigenous groups and other participants



# Potential Outcomes

---

- Inventory, compilation and presentation of existing scientific, technical and cultural information and Indigenous knowledge and identification and analysis of key information gaps, requirements and opportunities
- Analysis of key potential environmental, health, cultural, social or economic effects that may result from future development in the region (project-specific and cumulative), including any key issues that should be considered in applicable regulatory and planning processes
- Identification of potential mitigation measures for future development activities, including:
  - Standard mitigation measures
  - Other potential and innovative approaches, technologies and measures to address particular issues
  - Potential approaches and measures to address regional-scale and non-project specific effects (including cumulative effects)
- Recommendations on how to consider, implement or otherwise address the regional assessment outputs in future impact / environmental assessments or other regulatory processes, or through other initiatives by governments







# Questions

Moderator Debra Myles

Send written questions to:

**Debra Myles: [debra.myles@canada.ca](mailto:debra.myles@canada.ca)**

**Virginia Crawford: [virginia.crawford@canada.ca](mailto:virginia.crawford@canada.ca)**

**General email: [iaac.regionalrof-cdfregionale.aeic@canada.ca](mailto:iaac.regionalrof-cdfregionale.aeic@canada.ca)**



# Regional Assessment in the Ring of Fire Area

## Contacts

Project Manager: Debra Myles [debra.myles@canada.ca](mailto:debra.myles@canada.ca)

Indigenous Engagement Lead: Virginia Crawford [virginia.crawford@canada.ca](mailto:virginia.crawford@canada.ca)

Funding Programs: Nathalie Boivin [iaac.FP-PAF.aeic@canada.ca](mailto:iaac.FP-PAF.aeic@canada.ca)

RA general email: [iaac.regionalrof-cdfregionale.aeic@canada.ca](mailto:iaac.regionalrof-cdfregionale.aeic@canada.ca)

## Registry

Ring of Fire Area RA Registry #80468:

<https://iaac-aeic.gc.ca/050/evaluations/proj/80468>



## **Project Impact Assessments in the Ring of Fire Area**

### **Marten Falls Community Access Road Project**

Registry #80184: <https://iaac-aeic.gc.ca/050/evaluations/proj/80184>

General email: [IAAC.MartenFalls.AEIC@canada.ca](mailto:IAAC.MartenFalls.AEIC@canada.ca)

### **Webequie Supply Road Project**

Registry #80183: <https://iaac-aeic.gc.ca/050/evaluations/proj/80183>

General email: [IAAC.Webequie.AEIC@canada.ca](mailto:IAAC.Webequie.AEIC@canada.ca)



## **Impact Assessment Agency**

<https://www.canada.ca/en/impact-assessment-agency.html>

***Impact Assessment Act*** (sections 92-94, 96-103)

<https://laws.justice.gc.ca/eng/acts/I-2.75/index.html>

## **Regional and Strategic Assessments**

<https://www.canada.ca/en/impact-assessment-agency/services/policy-guidance/regional-strategic-assessments.html>

[Fact sheet: Regional Assessment under the \*Impact Assessment Act\*](#)

## **IAAC Training Links**

<https://iaac-aeic.gc.ca/014/index-eng.aspx>

### **e-learning**

[https://elearning.iaac-aeic.gc.ca/mod00/mod00\\_00\\_01-en.html](https://elearning.iaac-aeic.gc.ca/mod00/mod00_00_01-en.html)

