

Regional Assessment in the Ring of Fire Area

PLANNING THE REGIONAL ASSESSMENT
INFORMATION SESSIONS - NOVEMBER 24 AND 26, 2020



Impact Assessment
Agency of Canada

Agence d'évaluation
d'impact du Canada

Canada

Submitting a question- MS Live

The screenshot displays a Microsoft Teams Live event interface. The main content area shows a slide titled "Submitting a question- MS Live" with a text box for questions and a "Submit" button. A sidebar on the right, titled "Live event Q&A", shows "No featured questions yet" and an "Ask a question" button. A "GR" logo is visible in the center of the screen. The interface includes navigation elements like "Need help?" and "Leave" at the top, and logos for EAO (Environmental Assessment Office) and the Impact Assessment Agency of Canada at the bottom.

Purpose and Outline

1. Purpose of the Presentation
2. Regional Assessment Under the Impact Assessment Act
3. Context: Regional Assessment in the Ring of Fire Area
4. Participation: How to Get Involved
5. Links and Contact Information

2. Regional Assessment Under the Impact Assessment Act

Who is the Agency?

Impact Assessment Agency of Canada

- The Agency has responsibilities under the *Impact Assessment Act (Act)* including conducting **project** impact assessments and delivering the **regional and strategic assessments program**
- The Agency is responsible for working with federal departments and collaborating with or engaging other levels of government, Indigenous communities and organizations, industry, non-government organizations and individuals
- **All types of assessments under the Act require meaningful participation**
- Prior to August 28, 2019, the Agency was known as the **Canadian Environmental Assessment Agency**

What are Regional Assessments?

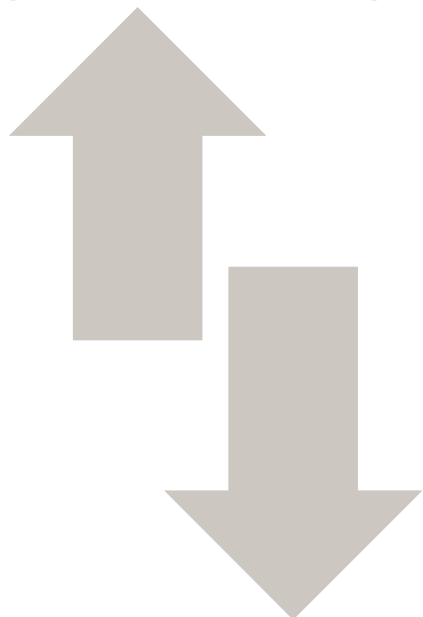
- Studies in areas of **existing projects** or **anticipated development** to inform planning and management of cumulative effects and inform project impact assessments
- Allow the Government of Canada to go beyond project-specific impact assessments to understand the **regional context** and provide more comprehensive analyses to help **inform future project-specific impact assessment decisions**
- Regional assessment could be used to inform and identify:
 - Baseline against which to assess the incremental impact of a discrete project
 - Mitigation measures for future projects
 - Potential impacts on rights and interests of Indigenous peoples
 - Guidance for land or marine-use planning and other initiatives for managing cumulative effects

Potential Regional Assessment Outcomes

Regional Planning

- Define and steer future development in a specific region
- Identify general, non-project specific measures to address regional scale issues
- Provide regional context for evaluating developments and effects in future assessments
- Define mitigation and follow-up needs for future projects
- Contribute information and analysis for future project assessments

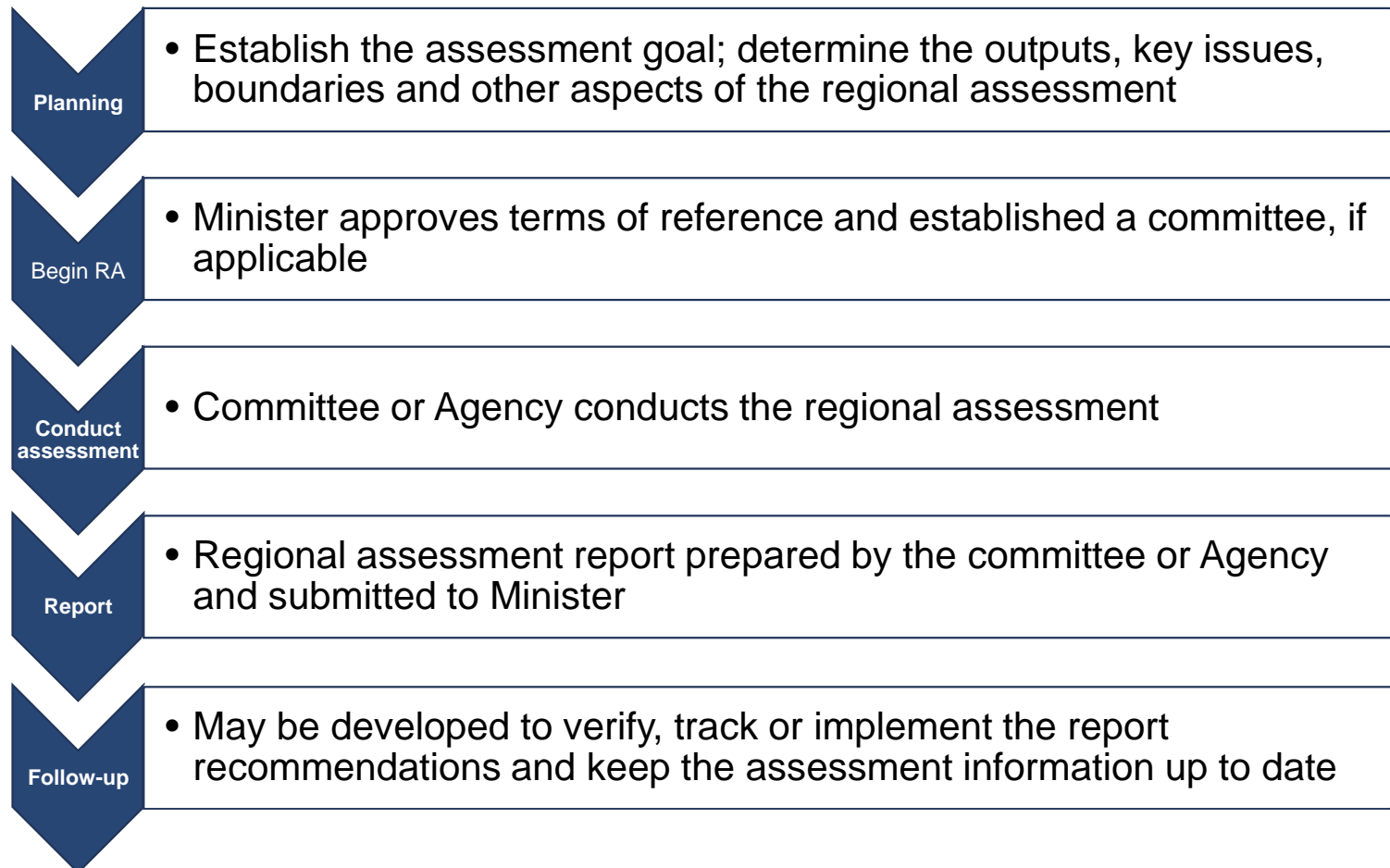
Impact Assessment



Who Conducts a Regional Assessment?

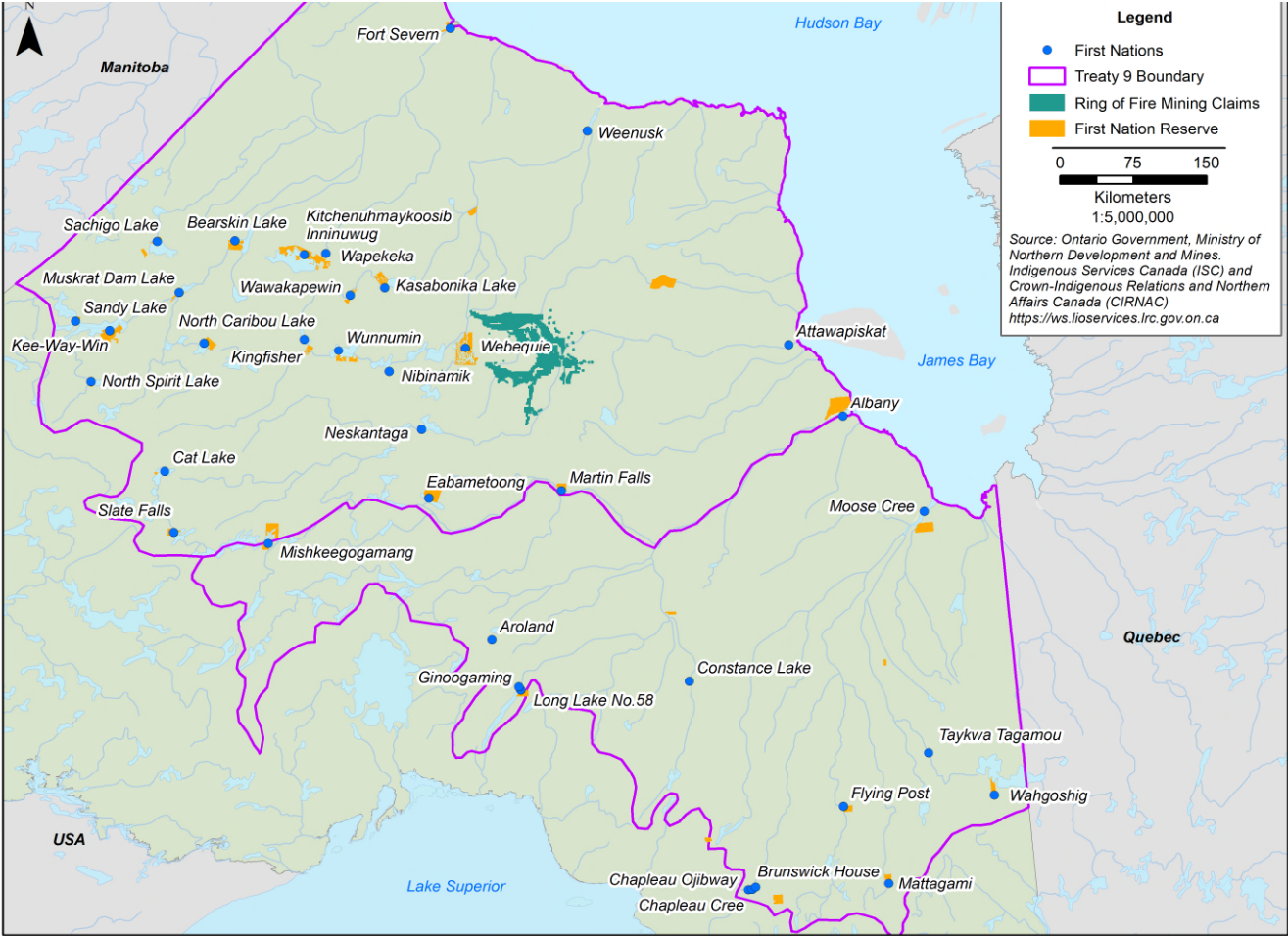
- The Minister of Environment and Climate Change is responsible for establishing a **committee** or authorizing the **Agency** to conduct a regional assessment
- If the region is partly or entirely outside of federal lands, the Minister can enter into an **agreement** with another jurisdiction for the joint conduct of the regional assessment
- The Minister must establish or approve the **terms of reference** for the regional assessment and appoint or approve the appointment of a **committee**, if applicable

General Steps in a Regional Assessment



3. Context: Regional Assessment in the Ring of Fire Area

- People (Treaty 9)
- Mineral potential/resources
- Environment
- Geography (shield/lowlands)



Current Federal Impact Assessments

Webequie Supply Road Project

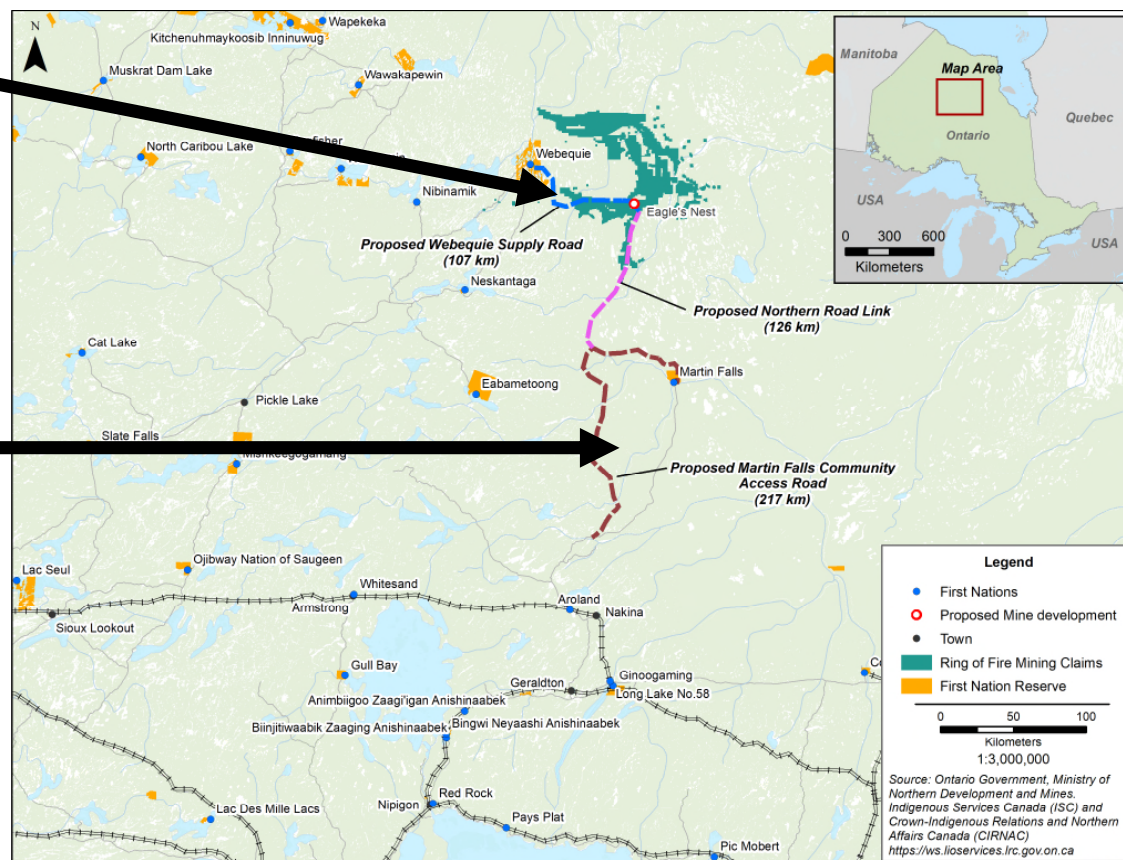
Proponent: Webequie First Nation

- 107 km all-season road
- IA commenced, NOC and Guidelines issued Feb 2020
- **Currently in Impact Statement Phase**

Marten Falls Community Access Road Project

Proponent: Marten Falls First Nation

- All-season multi-use community access road, about 190 to 230 km
- IA commenced, NOC and Guidelines issued Feb 2020
- **Currently in Impact Statement Phase**



Reasons For a Regional Assessment

RA initiated **February 2020** when the Minister responded to requests from an Indigenous community and two non-government organizations (posted on Registry)

- A regional assessment could inform future project-specific federal impact assessments and decisions
- Anticipated developments have the potential to cause adverse effects within federal jurisdiction such as: climate change, effects on fish and fish habitat; migratory bird populations; and wildlife listed under the *Species at Risk Act*
- There are opportunities to collaborate with the province of Ontario and to involve Indigenous groups, non-government organizations, and others in the planning and conduct of a regional assessment
- There is potential for development to impact the rights of Indigenous people in the area
- There is public interest related to developments resulting in cumulative effects in the area

Agency to report to Minister in Fall 2020 with results of engagement to date



Goal of Regional Assessment

To provide information and analysis regarding future developments in the Ring of Fire area and their potential effects to inform and improve impact assessments and other planning and decision-making processes in a way that helps protect the environmental, health, culture, social and economic conditions of the area while also creating opportunities for sustainable economic development.

Source: Ring of Fire Information Sheet November 2020



Potential Outputs

- Inventory, compilation and presentation of existing scientific, technical and cultural information and Indigenous knowledge and identification and analysis of key information gaps, requirements and opportunities
- Analysis of key potential environmental, health, cultural, social or economic effects that may result from future development in the region (project-specific and cumulative), including any key issues that should be considered in applicable regulatory and planning processes
- Identification of potential mitigation measures for future development activities, including:
 - Standard mitigation
 - Measures to address specific issues, or measures that could address regional-scale (non project-specific) issues
- Recommendations on how to consider, implement or otherwise address the regional assessment outputs in future impact / environmental assessments or other regulatory processes, or through other initiatives by governments



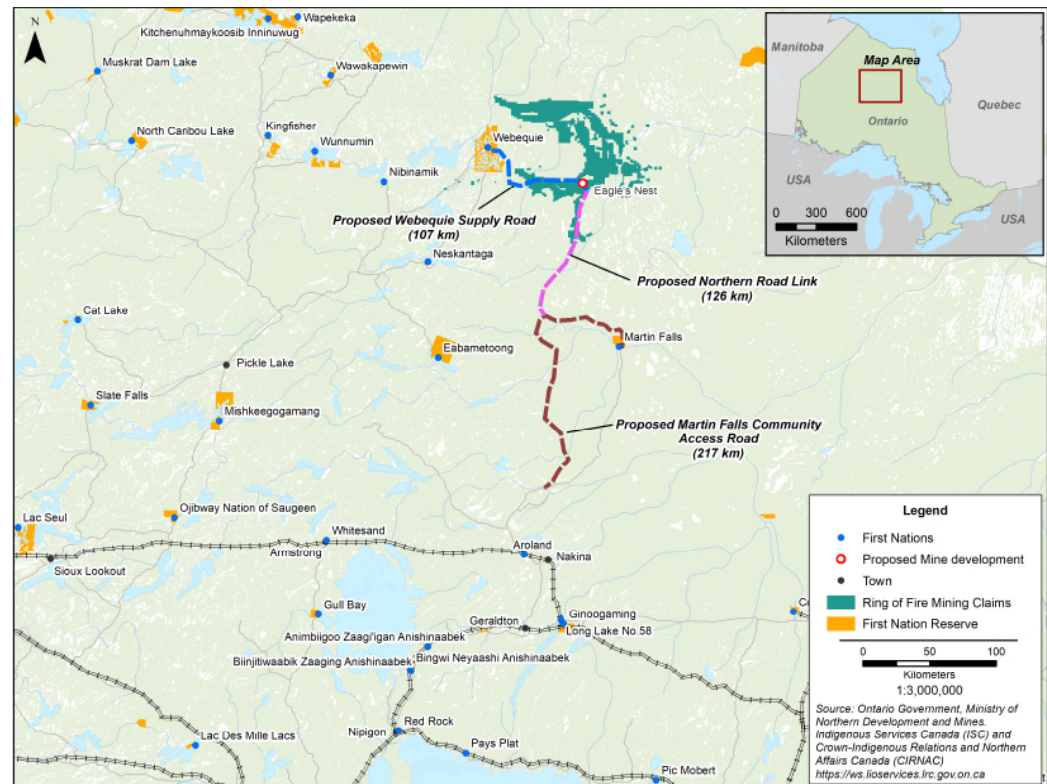
Boundaries of the Regional Assessment

Assessment Area

- Will be defined to encompass the current and future projects and activities to which the assessment outputs will be most relevant

Study Areas

- Will be determined in consideration of the geographic area(s) over which the potential effects of current and future projects and activities may occur, and the characteristics and geographic distributions of the environmental, health, social or cultural components under consideration



4. Participation

What is The Agency Looking For?

Contribute to planning the regional assessment:

1. **Information** - an indication of any information, data, studies and past or ongoing initiatives that could contribute to the regional assessment
2. **Analysis** - what could the regional assessment include?
 - outputs to contribute to the goal
 - key environmental, health, cultural, social or economic components
3. **Process - how could the regional assessment be conducted?**
 - advisory groups
 - engagement
 - reporting
4. Any other information or views that you would like to contribute

Participant Funding Program

- Announced **November 12**, applications due **December 14, 2020**
- Funds will partially cover costs that may be incurred by the participants during the planning of the regional assessment
- **Regular Funding:** the public was notified through a news release of the availability of funds at the start of the engagement activity (November 12, 2020)
- **Indigenous funding:** Indigenous groups that may be interested in the assessment or may be directly impacted by future developments were directly notified of the availability of funds
- Second funding callout in **early 2021** for participation in the conduct of the regional assessment

Planning the RA – Anticipated Schedule

DATE	ACTION
Fall 2020	<ul style="list-style-type: none">• Agency conducts virtual information sessions for participants• PFP applications due December 14• Agency reports back to Minister with results of engagement
Winter 2021	<ul style="list-style-type: none">• Agency holds comment period on draft terms of reference, and draft RA agreement as applicable
Spring 2021	<ul style="list-style-type: none">• Finalization of terms of reference and establishment of RA committee as applicable



How to Participate

- Contact Agency to set meetings
- Email written submissions
- Registry site
- Other means



Latest update
November 12, 2020 — The Impact Assessment Agency of Canada is inviting input on the planning of the Regional Assessment until January 21, 2021. The Agency is also holding [virtual information sessions](#).

The Agency is making [funding available](#) to assist the participation of the public, indigenous communities and organizations in the planning of the regional assessment. Applications received by December 14, 2020, will be considered.

Participate

[Submit a comment](#) [View comments](#)

Key documents

Document Number	Document Title	File	Date
13	Information Sheet	PDF (44 KB)	November 12, 2020
1	Minister's response	-	February 10, 2020

[List all records](#)

Contacts
Regional Assessment in the Ring of Fire Area
Impact Assessment Agency of Canada
160 Elgin Street, 22nd floor
Ottawa, ON K1A 0H3
Telephone: 613-892-0155
Email: iaac.regionalrof-cdfregionale.aeic@canada.ca

5. Contacts & Supporting Links



Regional Assessment in the Ring of Fire area

Contacts

Project Manager: Debra Myles debra.myles@canada.ca

Indigenous Consultation Lead: Virginia Crawford

Funding Programs: Nathalie Boivin iaac.FP-PAF.aeic@canada.ca

RA general email: iaac.regionalrof-cdfregionale.aeic@canada.ca

Registry

Ring of Fire Area RA Registry #80468: <https://iaac-aeic.gc.ca/050/evaluations/proj/80468>



Project Impact Assessments in the Ring of Fire Area

Marten Falls Community Access Road Project

Registry #80184: <https://iaac-aeic.gc.ca/050/evaluations/proj/80184>

General email: IAAC.MartenFalls.AEIC@canada.ca

Webequie Supply Road Project

Registry # 80183: <https://iaac-aeic.gc.ca/050/evaluations/proj/80183>

General email: IAAC.Webequie.AEIC@canada.ca

Impact Assessment Agency

<https://www.canada.ca/en/impact-assessment-agency.html>

Impact Assessment Act (sections 92-94, 96-103)

<https://laws.justice.gc.ca/eng/acts/I-2.75/index.html>

Regional and Strategic Assessments

<https://www.canada.ca/en/impact-assessment-agency/services/policy-guidance/regional-strategic-assessments.html>

[Fact sheet: Regional Assessment under the *Impact Assessment Act*](#)

IAAC Training Links

<https://iaac-aeic.gc.ca/014/index-eng.aspx>

e-learning

https://elearning.iaac-aeic.gc.ca/mod00/mod00_00_01-en.html



Questions

Moderator Eric Primeau

Send written questions to:

Registry <https://iaac-aeic.gc.ca/050/evaluations/proj/80468>

or

General email: iaac.regionalrof-cdfregionale.aeic@canada.ca