

Figure A4 Ground penetrating radar survey using 160 MHz antenna on Profiles 105 and 106 at the Tailings Management Area (TMA).

Project No. 3134	Document Reference FFC-NL-3134-002
Location Springpole, ON	Date December 2019



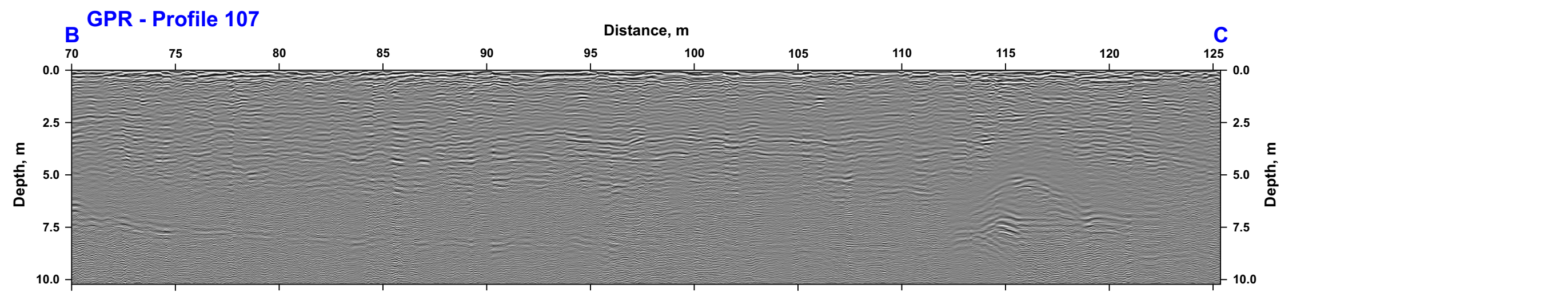
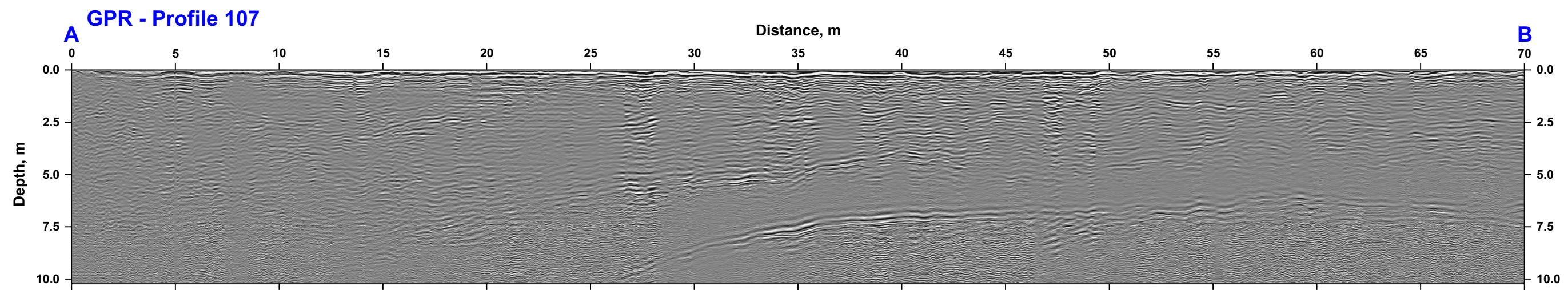


Figure A5 Ground penetrating radar survey using 160 MHz antenna on Profile 107 at the Tailings Management Area (TMA).

Project No. 3134	Document Reference FFC-NL-3134-002
Location Springpole, ON	Date December 2019



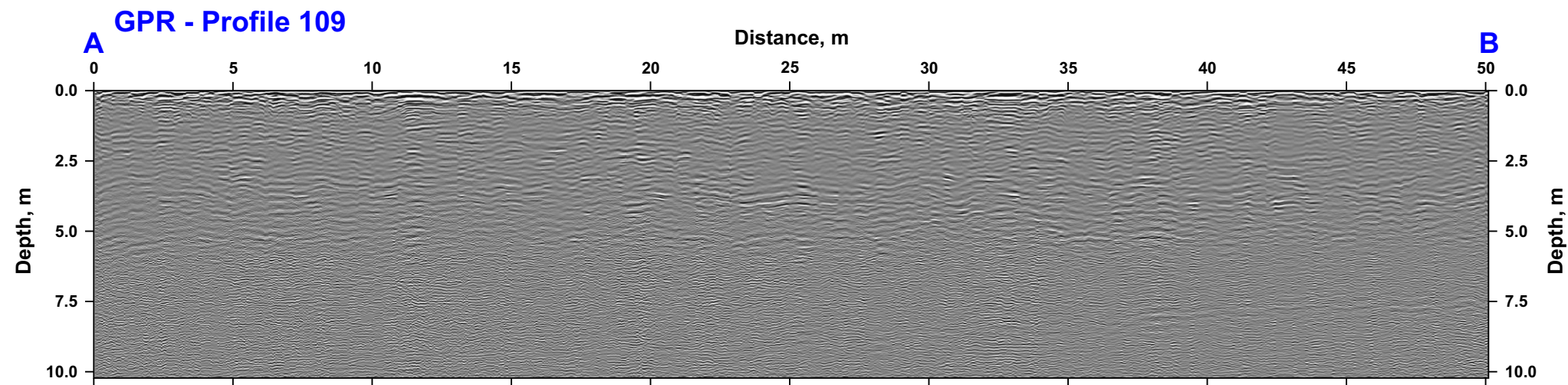
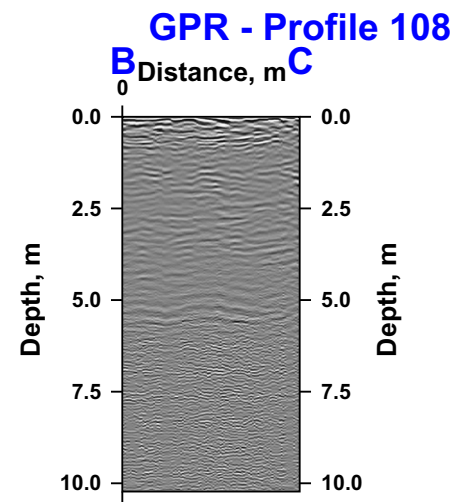
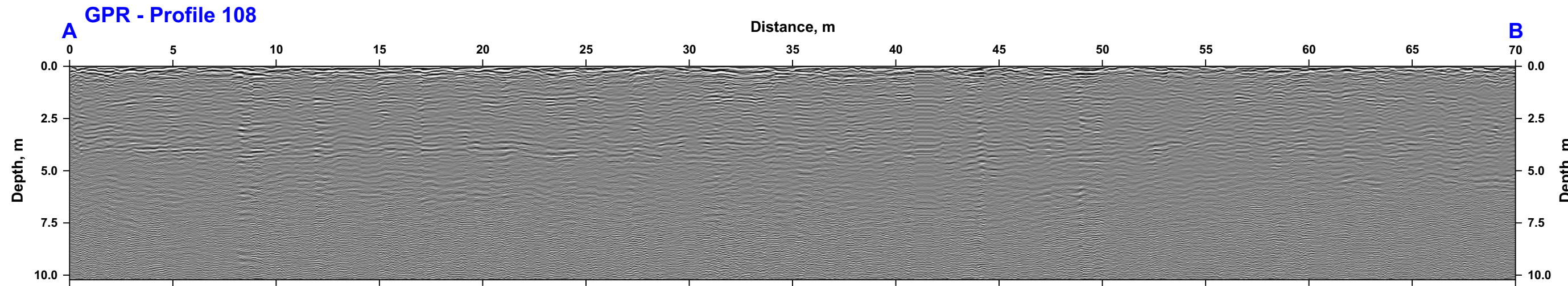


Figure A6 Ground penetrating radar survey using 160 MHz antenna on Profiles 008 and 009 at the Tailings Management Area (TMA).

Project No. 3134	Document Reference FFC-NL-3134-002
Location Springpole, ON	Date December 2019



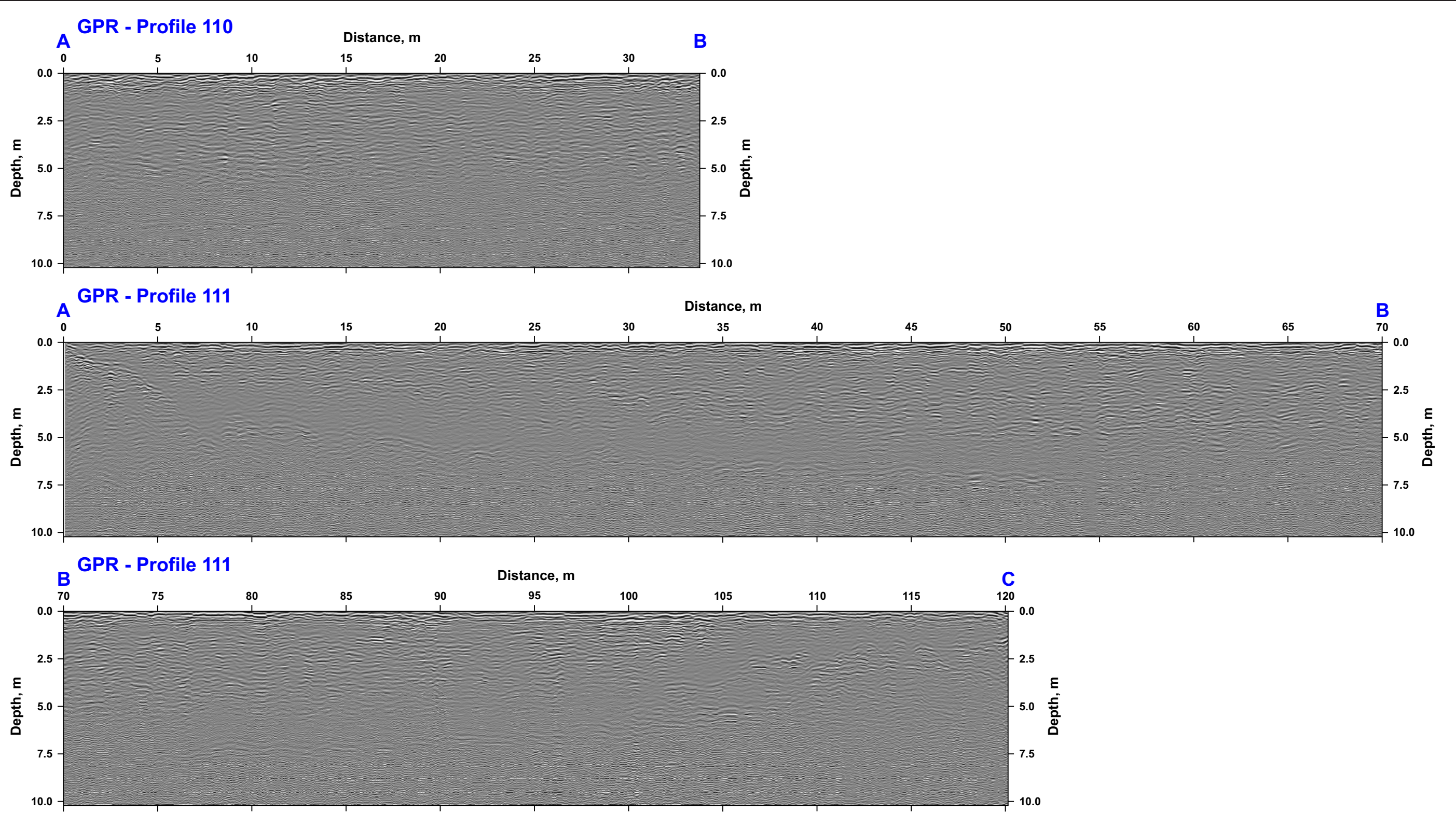



Figure A7 Ground penetrating radar survey using 160 MHz antenna on Profiles 110 and 111 at the Tailings Management Area (TMA).

Project No. 3134	Document Reference FFC-NL-3134-002	
Location Springpole, ON	Date December 2019	

***APPENDIX B***

---

***Logs of Piezometers***

Project: Hydrogeological Assessment

## Log of Monitoring Well: BL-0143

Client: First Mining Gold

Project No: 3134

Location: Springpole Lake, ON

Date: September 30 - October 8, 2019

SUBSURFACE PROFILE				SAMPLE					Standard Penetration Test "N" Value per 300 mm 20 60	Well Data - Shallow	Well Data - Deep	Well Description
Depth	Symbol	Geologic Description	Elevation (m)	Sample Type	Sample Sequence	"N" Value	Recovery (%)	% Fines				
0		Ground Surface (GS)	0									
1												
2												
3	1											
4												
5												
6	2											
7												
8												
9												
10	3											
11												
12												
13	4											
14												
15												
16	5											
17												
18												
19												
20	6											
21												
22												
23	7											
24												
25												
26	8											
27												
28												
29												
30	9											
31												
32												
33	10											
34												
35												
36	11											
37												
38												
39	12											
40												
41												
42	13											
43												



Fracflow Consultants Inc.  
 154 Major's Path  
 St. John's, NL A1A 5A1  
 Phone: (709) 739-7270  
 Fax: (709) 753-5101

Drilling Method:

Driller:

Datum: Geodetic

Sheet: 1 of 2

Project: Hydrogeological Assessment

## Log of Monitoring Well: BL-0143

Client: First Mining Gold

Project No: 3134

Location: Springpole Lake, ON

Date: September 30 - October 8, 2019

SUBSURFACE PROFILE				SAMPLE						Well Data - Shallow	Well Data - Deep	Well Description
Depth	Symbol	Geologic Description	Elevation (m)	Sample Type	Sample Sequence	"N" Value	Recovery (%)	% Fines	Standard Penetration Test "N" Value per 300 mm			
									20	60		
43												
44												
45												
46	14											
47												
48												
49												
50												
51												
52												
53	16											
54												
55												
56												
57												
58												
59												
60												
61												
62												
63	19											
64												
65												
66	20											
67												
68												
69												
70	21											
71												
72												
73	22											
74												
75												
76	23											
77			-23.5									
78		End of Borehole										
79	24											
80												
81												
82	25											
83												
84												
85												



Fracflow Consultants Inc.  
 154 Major's Path  
 St. John's, NL A1A 5A1  
 Phone: (709) 739-7270  
 Fax: (709) 753-5101

Drilling Method:

Driller:

Datum: Geodetic

Sheet: 2 of 2



Project: Hydrogeological Assessment

## Log of Monitoring Well: BL-0321

Client: First Mining Gold

Project No: 3134

Location: Springpole Lake, ON

Date: September 30 - October 8, 2019

SUBSURFACE PROFILE				SAMPLE						Well Data - Shallow	Well Data - Deep	Well Description	
Depth	Symbol	Geologic Description	Elevation (m)	Sample Type	Sample Sequence	"N" Value	Recovery (%)	% Fines	Standard Penetration Test "N" Value per 300 mm				
									20	60			
43													
44													
45													
46	14												
47													
48													
49	15												
50													
51													
52	16												
53													
54													
55													
56	17												
57													
58													
59	18												
60													
61													
62	19												
63													
64													
65													
66	20												
67													
68													
69	21												
70													
71													
72	22												
73													
74													
75	23												
76													
77													
78													
79	24												
80													
81													
82	25												
83													
84													
85													



Fracflow Consultants Inc.  
 154 Major's Path  
 St. John's, NL A1A 5A1  
 Phone: (709) 739-7270  
 Fax: (709) 753-5101

Drilling Method:

Driller:

Datum: Geodetic

Sheet: 2 of 3



Project: Hydrogeological Assessment

# Log of Monitoring Well: BL-0334

Client: First Mining Gold

Project No: 3134

Location: Springpole Lake

Date: September 30 - October 8, 2019

SUBSURFACE PROFILE				SAMPLE					Well Data - Shallow	Well Data - Deep	Well Description	
Depth	Symbol	Geologic Description	Elevation (m)	Sample Type	Sample Sequence	"N" Value	Recovery (%)	% Fines				Standard Penetration Test "N" Value per 300 mm 20 60
0		Ground Surface (GS)	0									
1												
2												
3												
4												
5												
6												
7												
8												
9												
10												
11												
12												
13												
14												
15												
16												
17												
18												
19												
20												
21												
22												
23												
24												
25												
26												
27												
28												
29												
30												
31												
32												
33												
34												
35												
36												
37												
38												
39												
40												
41												
42												
43												



Fracflow Consultants Inc.  
 154 Major's Path  
 St. John's, NL A1A 5A1  
 Phone: (709) 739-7270  
 Fax: (709) 753-5101

Drilling Method:

Driller:

Datum: Geodetic

Sheet: 1 of 3

Project: Hydrogeological Assessment

## Log of Monitoring Well: BL-0334

Client: First Mining Gold

Project No: 3134

Location: Springpole Lake

Date: September 30 - October 8, 2019

SUBSURFACE PROFILE				SAMPLE						Well Data - Shallow	Well Data - Deep	Well Description		
Depth	Symbol	Geologic Description	Elevation (m)	Sample Type	Sample Sequence	"N" Value	Recovery (%)	% Fines	Standard Penetration Test "N" Value per 300 mm					
									20	60				
43														No. 2 silica sand packing from 10.85 m to 16.00 m
44														
45														
46	14													
47														
48														Bentonite and sand (4:1 ratio) packing from 16.00 m to 17.55 m
49	15													
50														
51														
52	16													
53														Bentonite and sand (1:10 ratio) packing from 17.55 m to 19.50 m
54	17													
55														
56														
57														
58	18													Bentonite and sand (8:3 ratio) packing from 19.50 m to 21.00 m
59	19													
60														
61														
62	20													
63														No. 2 silica sand packing from 21.00 m to 32.00 m
64														
65	21													
66														
67														
68	22													
69														
70														
71	23													
72														
73														
74	24													
75														
76														
77	25													
78														
79														
80														
81														
82														
83														
84														
85														



Fracflow Consultants Inc.  
 154 Major's Path  
 St. John's, NL A1A 5A1  
 Phone: (709) 739-7270  
 Fax: (709) 753-5101

Drilling Method:

Driller:

Datum: Geodetic

Sheet: 2 of 3

Project: Hydrogeological Assessment

## Log of Monitoring Well: BL-0334

Client: First Mining Gold

Project No: 3134

Location: Springpole Lake

Date: September 30 - October 8, 2019

SUBSURFACE PROFILE				SAMPLE						Well Data - Shallow	Well Data - Deep	Well Description
Depth	Symbol	Geologic Description	Elevation (m)	Sample Type	Sample Sequence	"N" Value	Recovery (%)	% Fines	Standard Penetration Test "N" Value per 300 mm			
									20	60		
86												
87												
88	27											
89												
90												
91												
92	28											
93												
94												
95	29											
96												
97												
98	30											
99												
00												
01	31											
02												
03												
04												
05	32											
06												
07												
08	33											
09			-33.6									
10		End of Borehole										
11	34											
12												
13												
14												
15	35											
16												
17												
18	36											
19												
20												
21	37											
22												
23												
24												
25	38											
26												
27												
28												



Fracflow Consultants Inc.  
 154 Major's Path  
 St. John's, NL A1A 5A1  
 Phone: (709) 739-7270  
 Fax: (709) 753-5101

Drilling Method:

Driller:

Datum: Geodetic

Sheet: 3 of 3

Project: Hydrogeological Assessment

# Log of Monitoring Well: BL-0357

Client: First Mining Gold

Project No: 3134

Location: Springpole Lake

Date: September 30 - October 8, 2019

SUBSURFACE PROFILE				SAMPLE					Standard Penetration Test "N" Value per 300 mm 20 60	Well Data - Shallow	Well Data - Deep	Well Description
Depth	Symbol	Geologic Description	Elevation (m)	Sample Type	Sample Sequence	"N" Value	Recovery (%)	% Fines				
0		Ground Surface (GS)	0									
1												Concrete packing from 0.00 m to 0.50 m
2												
3												
4												
5												
6												
7												
8												
9												
10												
11												
12												
13												
14												
15												
16												
17												
18												
19												
20												
21												
22												
23												
24												
25												
26												
27												
28												
29												
30												
31												
32												
33												
34												
35												
36												
37												
38												
39												
40												
41												
42												
43												



Concrete packing from 0.00 m to 0.50 m

Deep: WL 1.423 m below top of casing (Oct 8, 2019)

Deep: 0.04 m dia. Riser from 0.288 m AGS to 23.712 m

No. 2 silica sand packing from 0.50 m to 6.70 m

Bentonite and sand (1:1 ratio) packing from 6.70 m to 9.78 m

No. 2 silica sand packing from 9.78 m to 11.55 m

Bentonite and sand (2:1 ratio) packing from 11.55 m to 12.07 m



Fracflow Consultants Inc.  
 154 Major's Path  
 St. John's, NL A1A 5A1  
 Phone: (709) 739-7270  
 Fax: (709) 753-5101

Drilling Method:

Driller:

Datum: Geodetic

Sheet: 1 of 3

Project: Hydrogeological Assessment

## Log of Monitoring Well: BL-0357

Client: First Mining Gold

Project No: 3134

Location: Springpole Lake

Date: September 30 - October 8, 2019

SUBSURFACE PROFILE				SAMPLE						Well Data - Shallow	Well Data - Deep	Well Description	
Depth	Symbol	Geologic Description	Elevation (m)	Sample Type	Sample Sequence	"N" Value	Recovery (%)	% Fines	Standard Penetration Test "N" Value per 300 mm				
									20	60			
43													Bentonite and sand (1:20 ratio) packing from 12.07 m to 17.80 m
44													
45													
46	14												
47													
48													
49													
50	15												
51													
52													
53	16												
54													
55													
56	17												
57													
58													
59	18												
60													
61													
62	19												
63													
64													
65	20												
66													
67													
68													
69	21												
70													
71													
72	22												
73													
74													
75	23												
76													
77													
78													
79	24												
80													
81													
82	25												
83													
84													
85													



Fracflow Consultants Inc.  
 154 Major's Path  
 St. John's, NL A1A 5A1  
 Phone: (709) 739-7270  
 Fax: (709) 753-5101

Drilling Method:

Driller:

Datum: Geodetic

Sheet: 2 of 3

Project: Hydrogeological Assessment

## Log of Monitoring Well: BL-0357

Client: First Mining Gold

Project No: 3134

Location: Springpole Lake

Date: September 30 - October 8, 2019

SUBSURFACE PROFILE				SAMPLE					Well Data - Shallow	Well Data - Deep	Well Description
Depth	Symbol	Geologic Description	Elevation (m)	Sample Type	Sample Sequence	"N" Value	Recovery (%)	% Fines			
86											
87			-26.7								
88	27	End of Borehole									
89											
90											
91											
92	28										
93											
94											
95	29										
96											
97											
98	30										
99											
00											
01	31										
02											
03											
04											
05	32										
06											
07											
08	33										
09											
10											
11	34										
12											
13											
14											
15	35										
16											
17											
18	36										
19											
20											
21	37										
22											
23											
24											
25	38										
26											
27											
28											



Fracflow Consultants Inc.  
 154 Major's Path  
 St. John's, NL A1A 5A1  
 Phone: (709) 739-7270  
 Fax: (709) 753-5101

Drilling Method:

Driller:

Datum: Geodetic

Sheet: 3 of 3

***APPENDIX C***

---

***GPR Profiles from between Birch Lake  
and Springpole Lake and Camp Area***

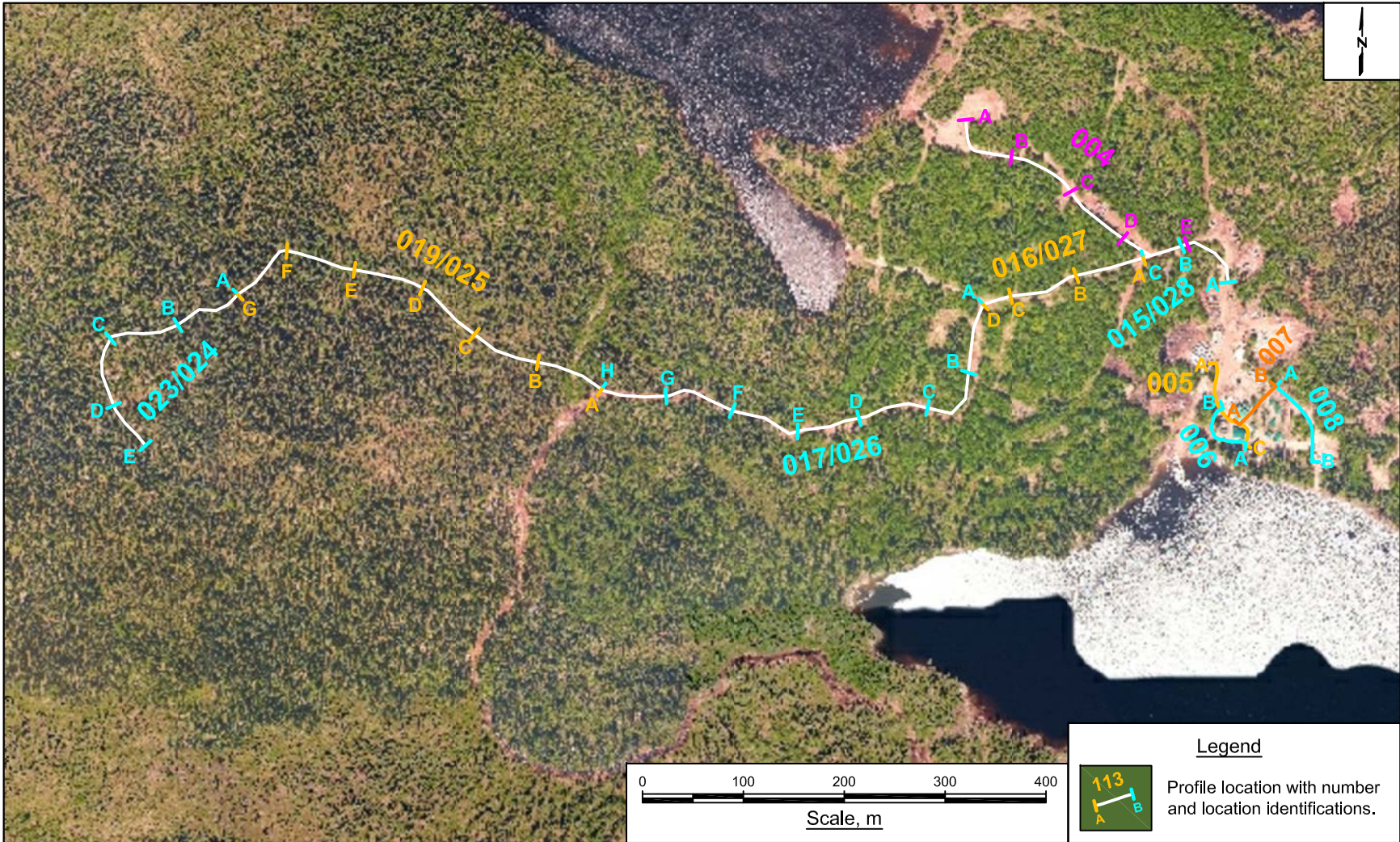



Figure C1a Location map of GPR profiles along the existing trail between Birch Lake and Springpole Lake and at the camp area.

Project No. 3134	Document Reference FFC-NL-3134-002	
Location Springpole, ON	Date December 2019	

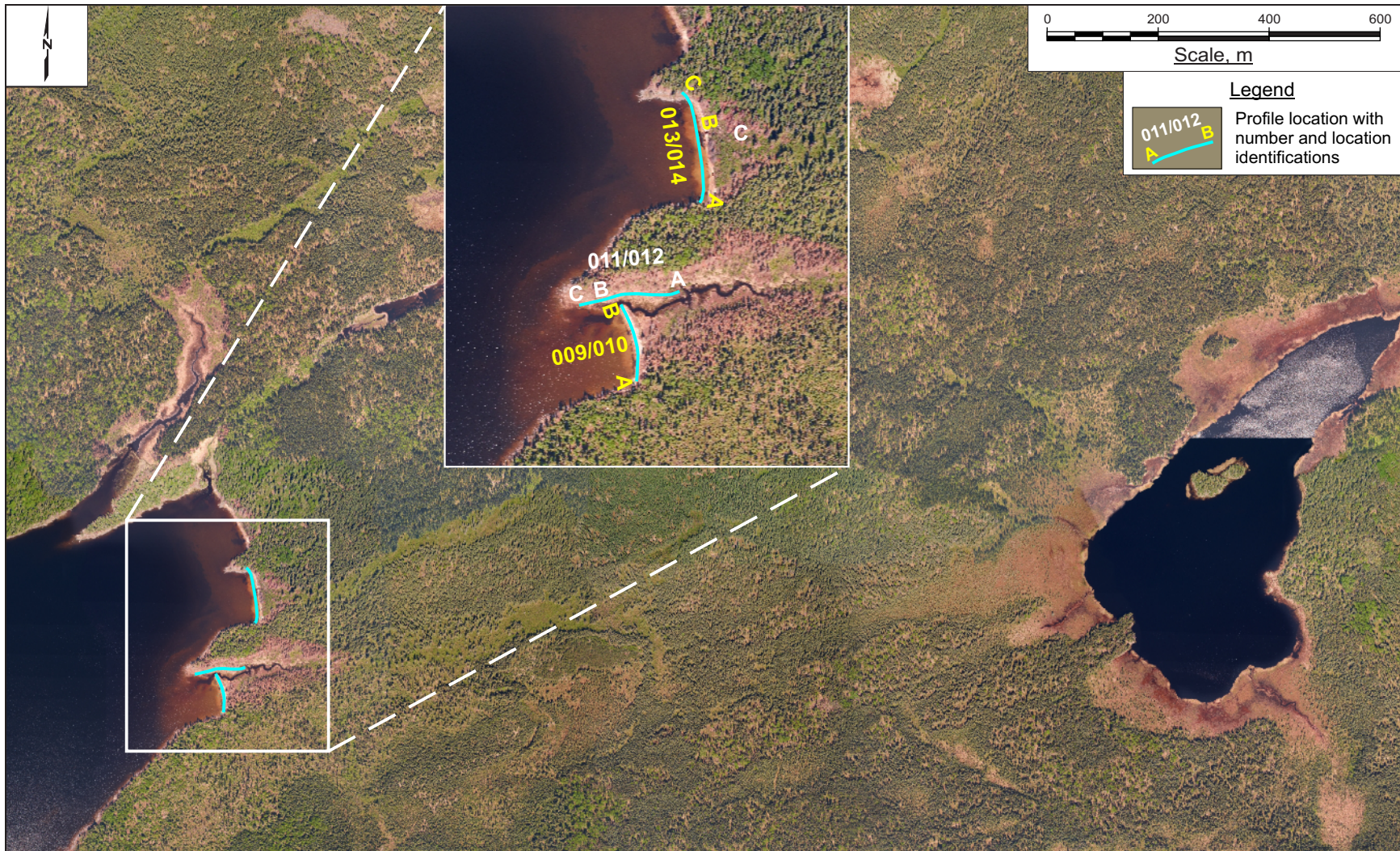


Figure C1b Location of the GPR profiles surveyed at the shoreline of Springpole Lake near the Tailings Management Area (TMA).

Project No. 3134	Document Reference FFC-NL-3134-002
Location Springpole, ON	Date December 2019



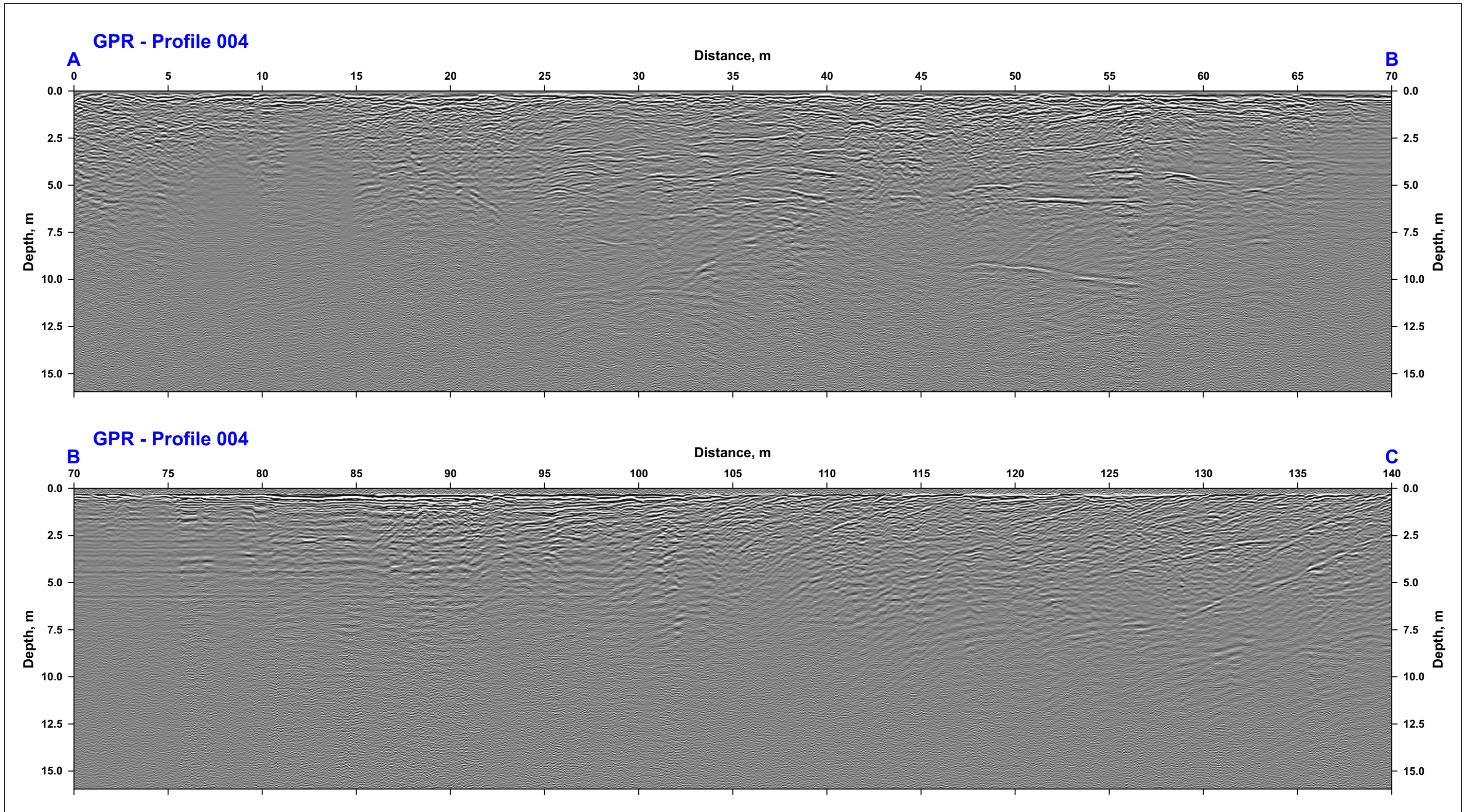


Figure C2 Ground penetrating radar survey using 160 MHz antenna on Profile 004 at the Springpole site, ON (Page 1 of 2).

Project No. 3134	Document Reference FFC-NL-3134-002
Location Springpole, ON	Date December 2019



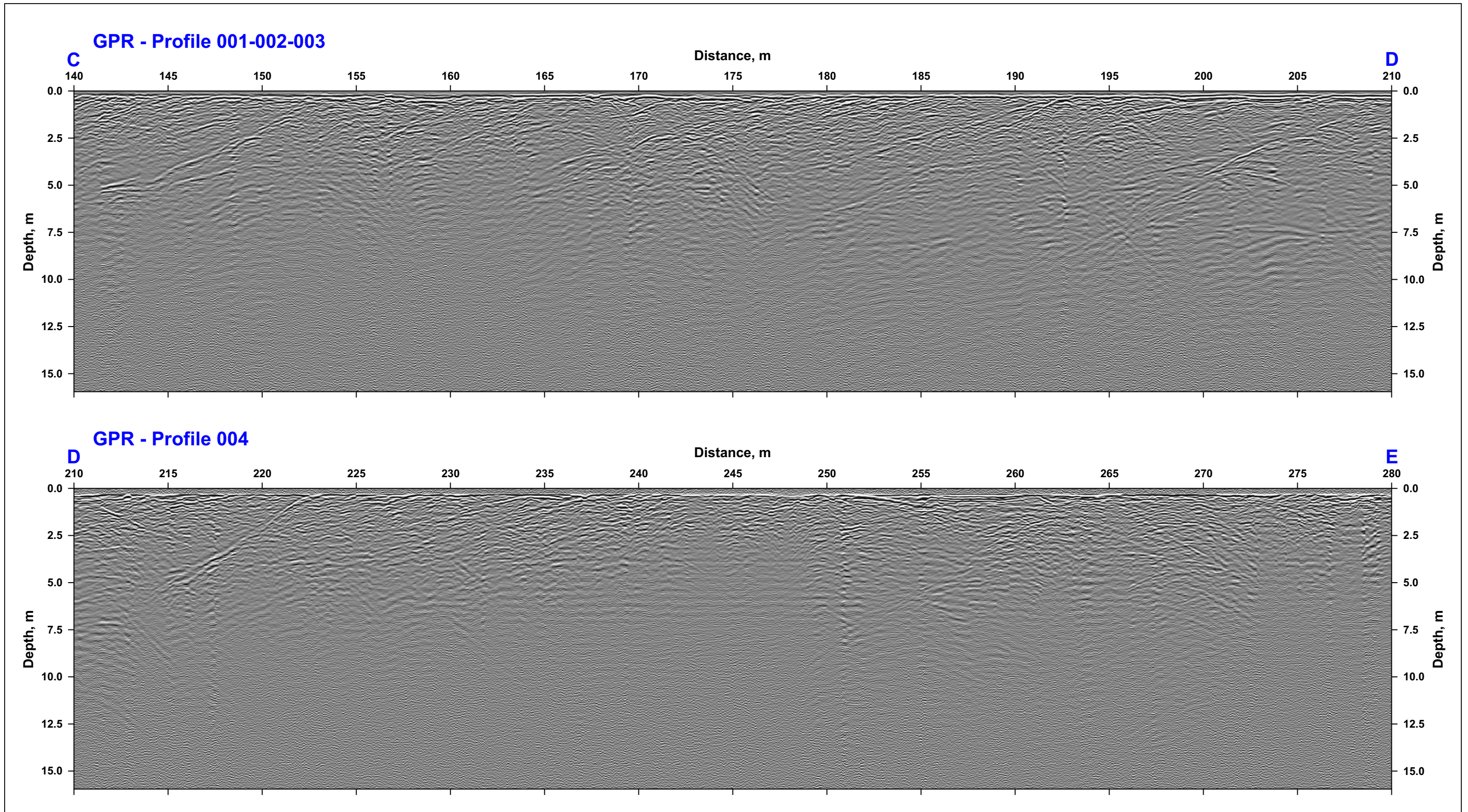


Figure C2 Ground penetrating radar survey using 160 MHz antenna on Profile 004 at the Springpole site, ON (Page 2 of 2).

Project No. 3134	Document Reference FFC-NL-3134-002
Location Springpole, ON	Date December 2019



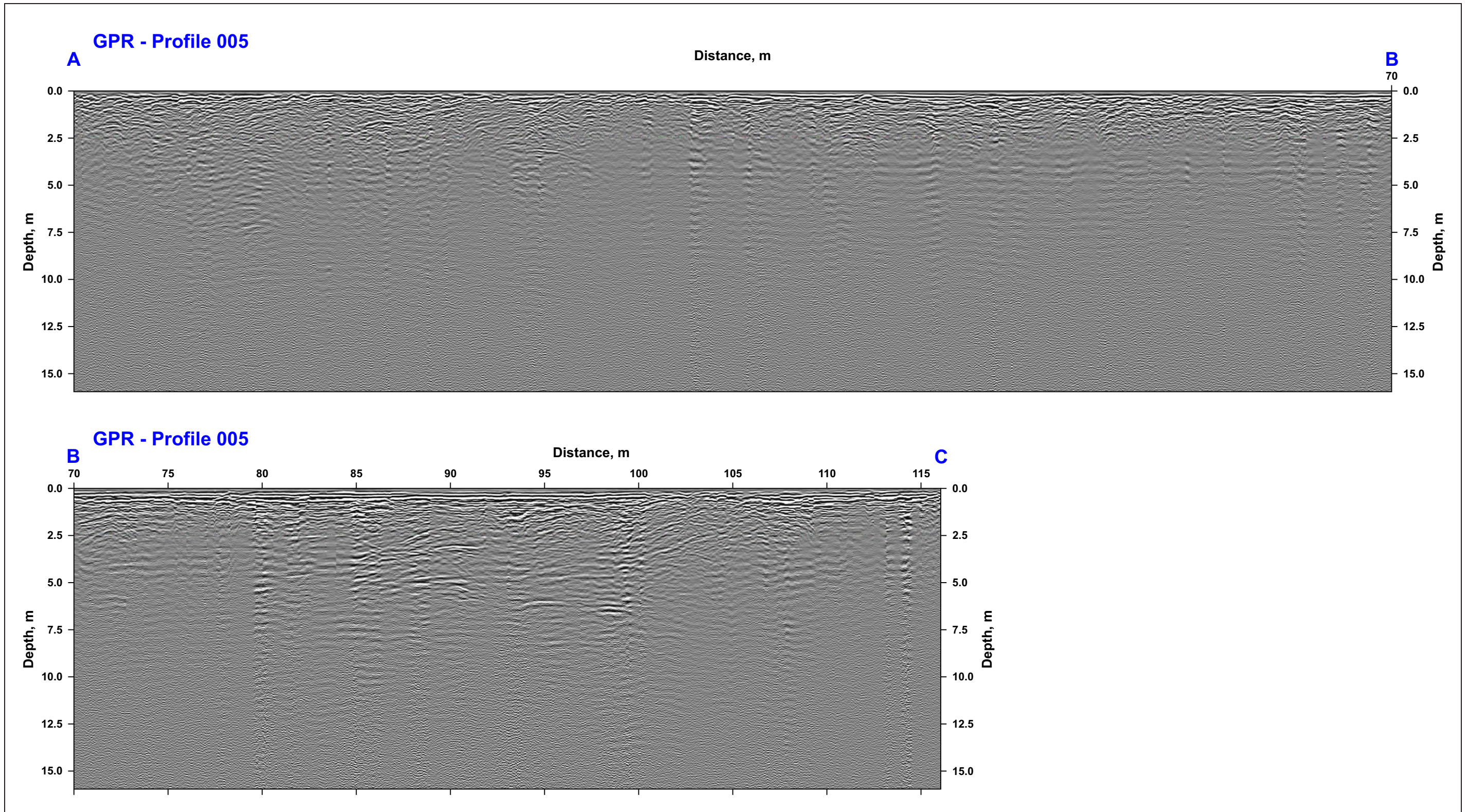


Figure C3 Ground penetrating radar survey using 160 MHz antenna on Profile 005 at the Springpole site, ON.

Project No. 3134	Document Reference FFC-NL-3134-002
Location Springpole, ON	Date December 2019



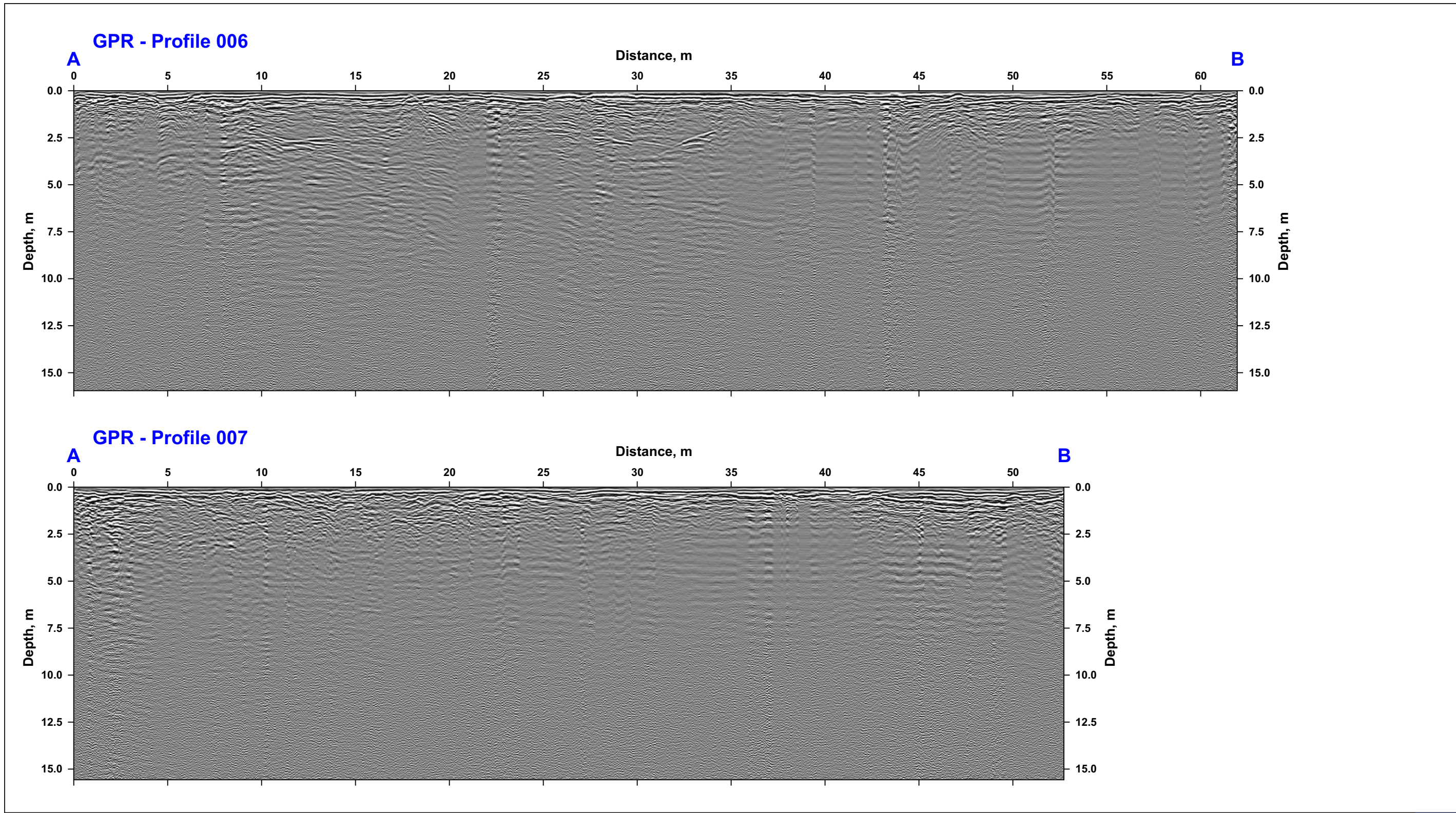



Figure C4 Ground penetrating radar survey using 160 MHz antenna on Profiles 006 and 007 at the Springpole site, ON.

Project No. 3134	Document Reference FFC-NL-3134-002	
Location Springpole, ON	Date December 2019	

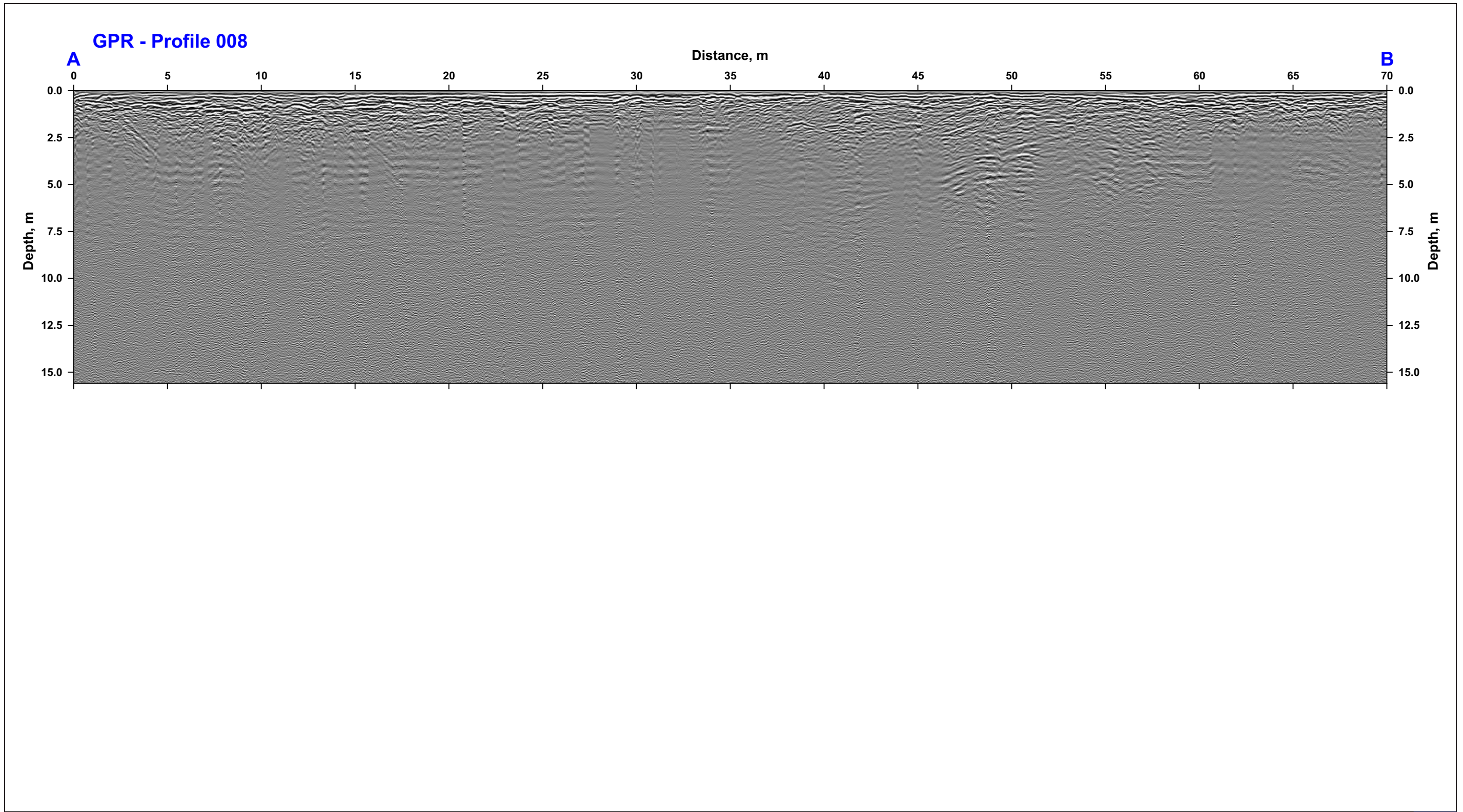



Figure C5 Ground penetrating radar survey using 160 MHz antenna on Profile 008 at the Springpole site, ON.

Project No. 3134	Document Reference FFC-NL-3134-002	
Location Springpole, ON	Date December 2019	

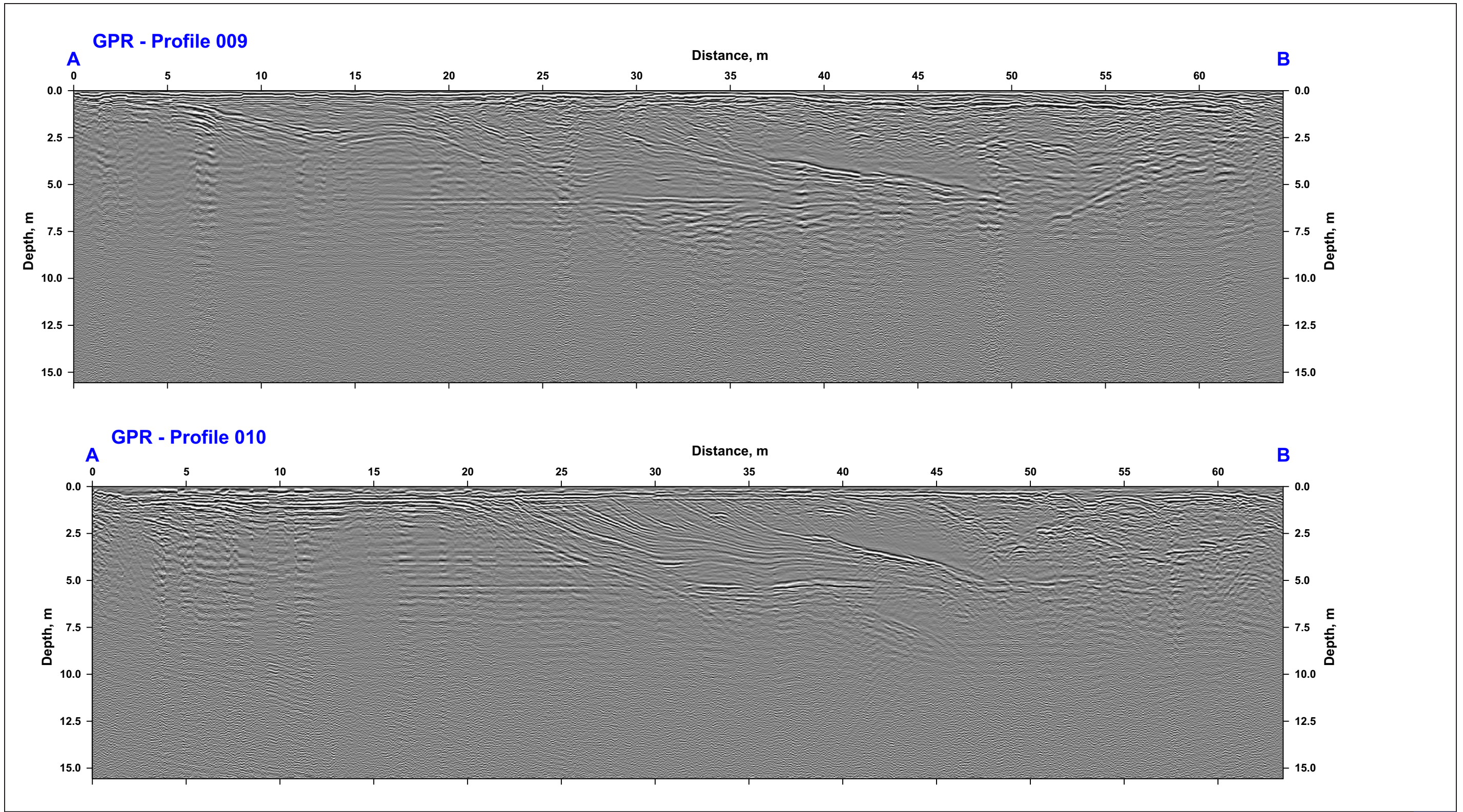



Figure C6 Ground penetrating radar survey using 160 MHz antenna on Profiles 009 and 010 at the Springpole site, ON.

Project No. 3134	Document Reference FFC-NL-3134-002	
Location Springpole, ON	Date December 2019	

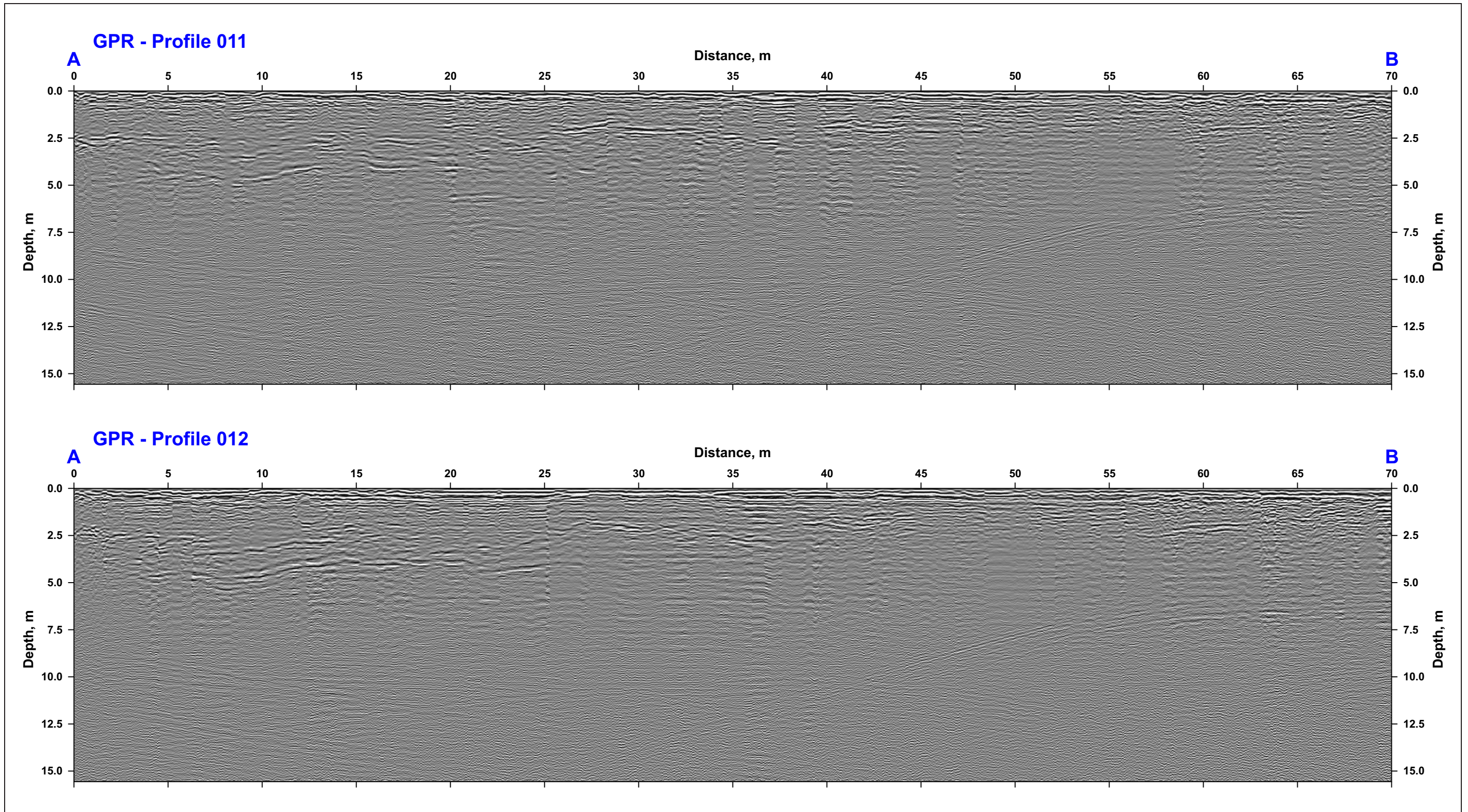



Figure C7 Ground penetrating radar survey using 160 MHz antenna on Profiles 011 and 012 at the Springpole site, ON (Page 1 of 2).

Project No. 3134	Document Reference FFC-NL-3134-002	
Location Springpole, ON	Date December 2019	

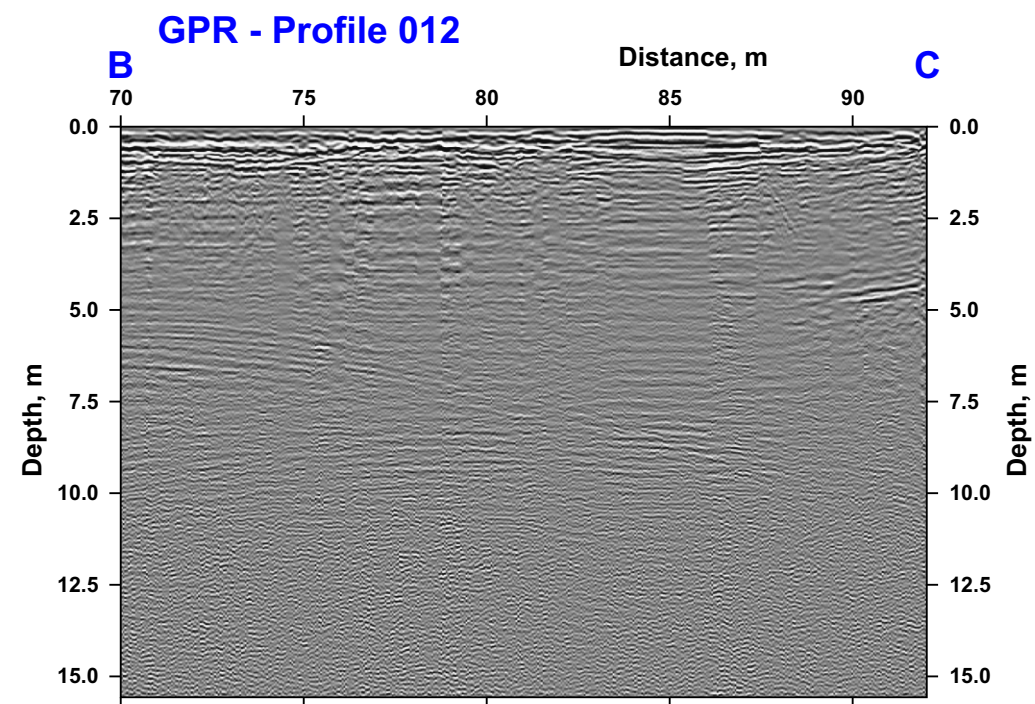
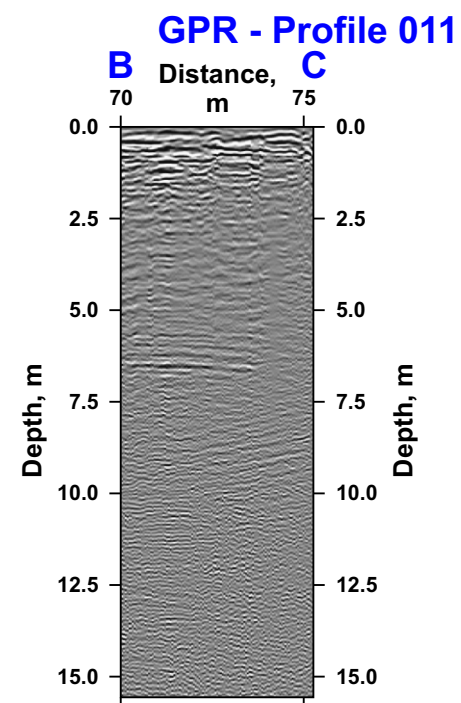


Figure C7 Ground penetrating radar survey using 160 MHz antenna on Profiles 011 and 012 at the Springpole site, ON (Page 2 of 2).

Project No. 3134	Document Reference FFC-NL-3134-002
Location Springpole, ON	Date December 2019



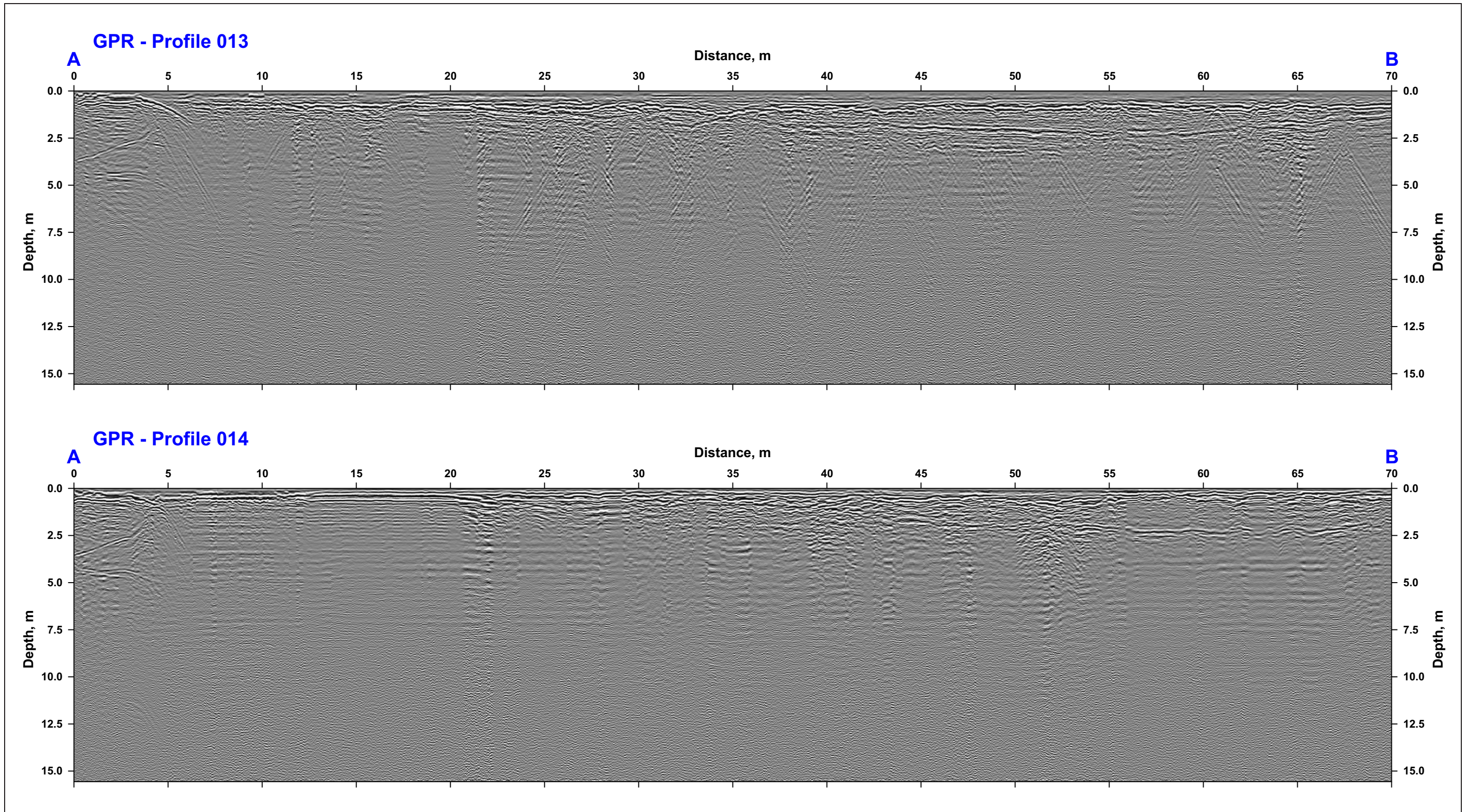


Figure C8 Ground penetrating radar survey using 160 MHz antenna on Profiles 013 and 014 at the Springpole site, ON (Page 1 of 2).

Project No. 3134	Document Reference FFC-NL-3134-002
Location Springpole, ON	Date December 2019



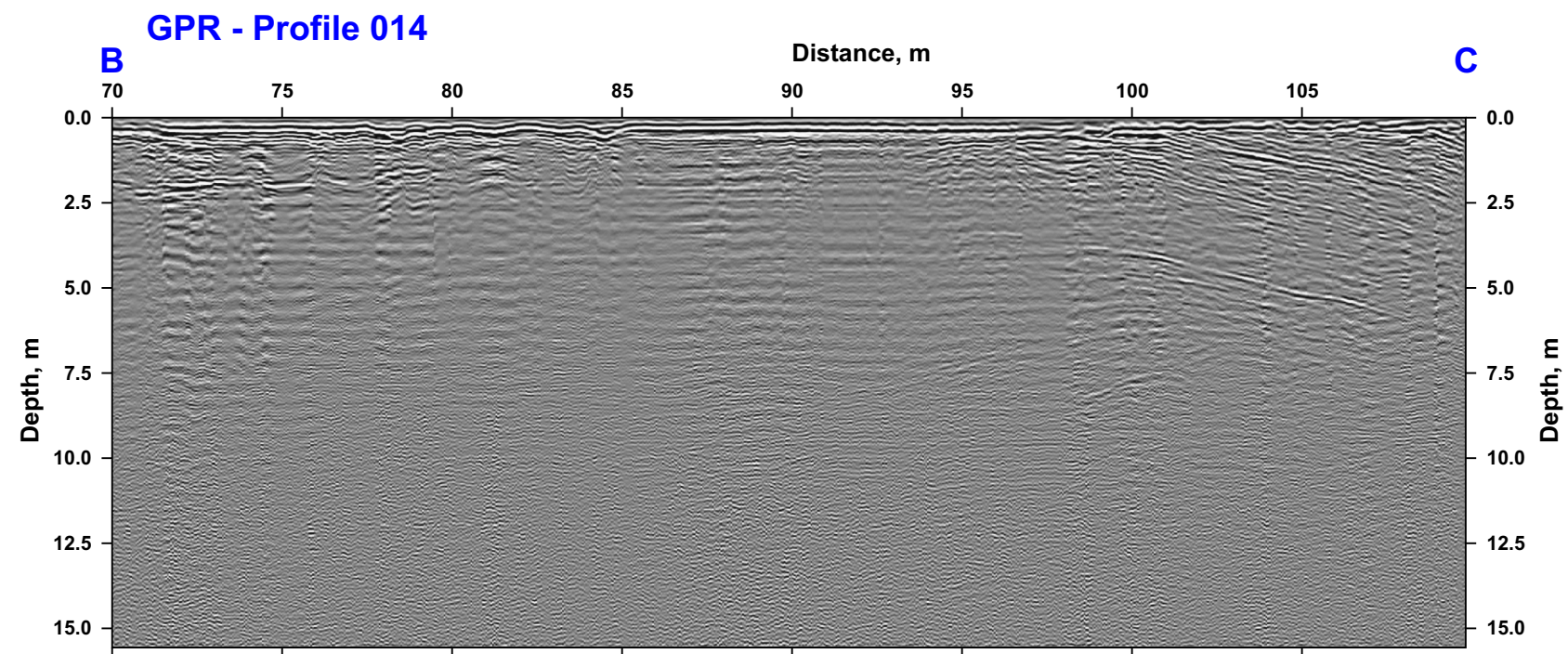
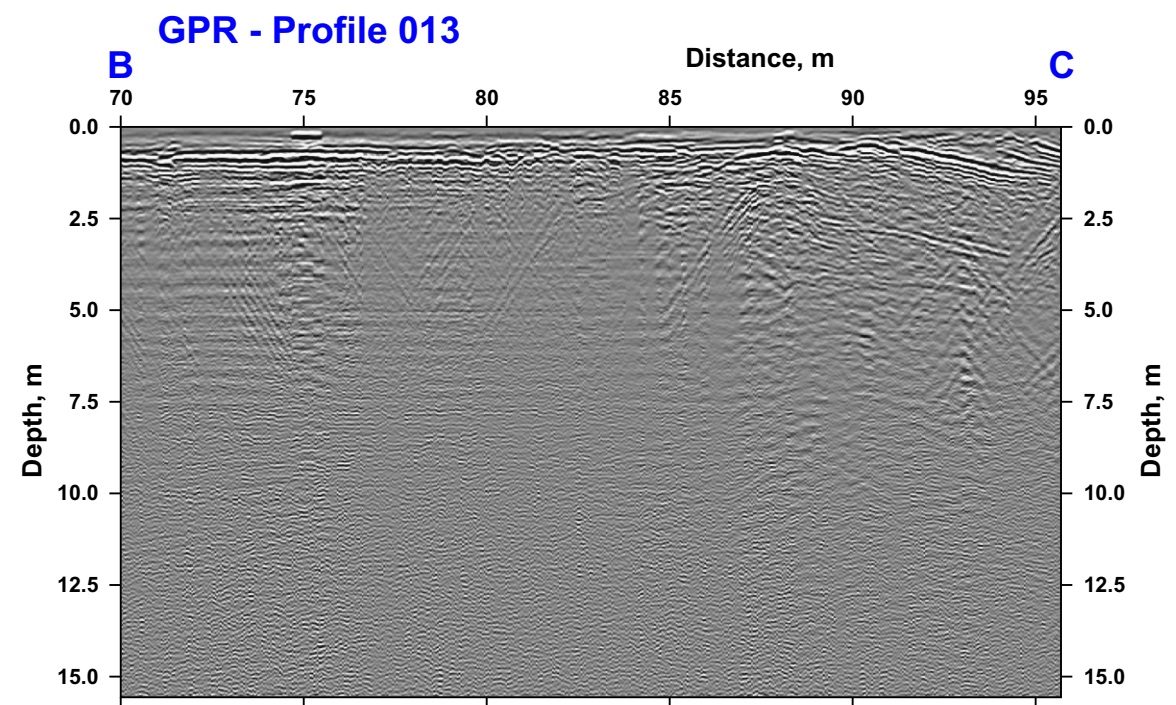



Figure C8 Ground penetrating radar survey using 160 MHz antenna on Profiles 013 and 014 at the Springpole site, ON (Page 2 of 2).

Project No. 3134	Document Reference FFC-NL-3134-002	
Location Springpole, ON	Date December 2019	

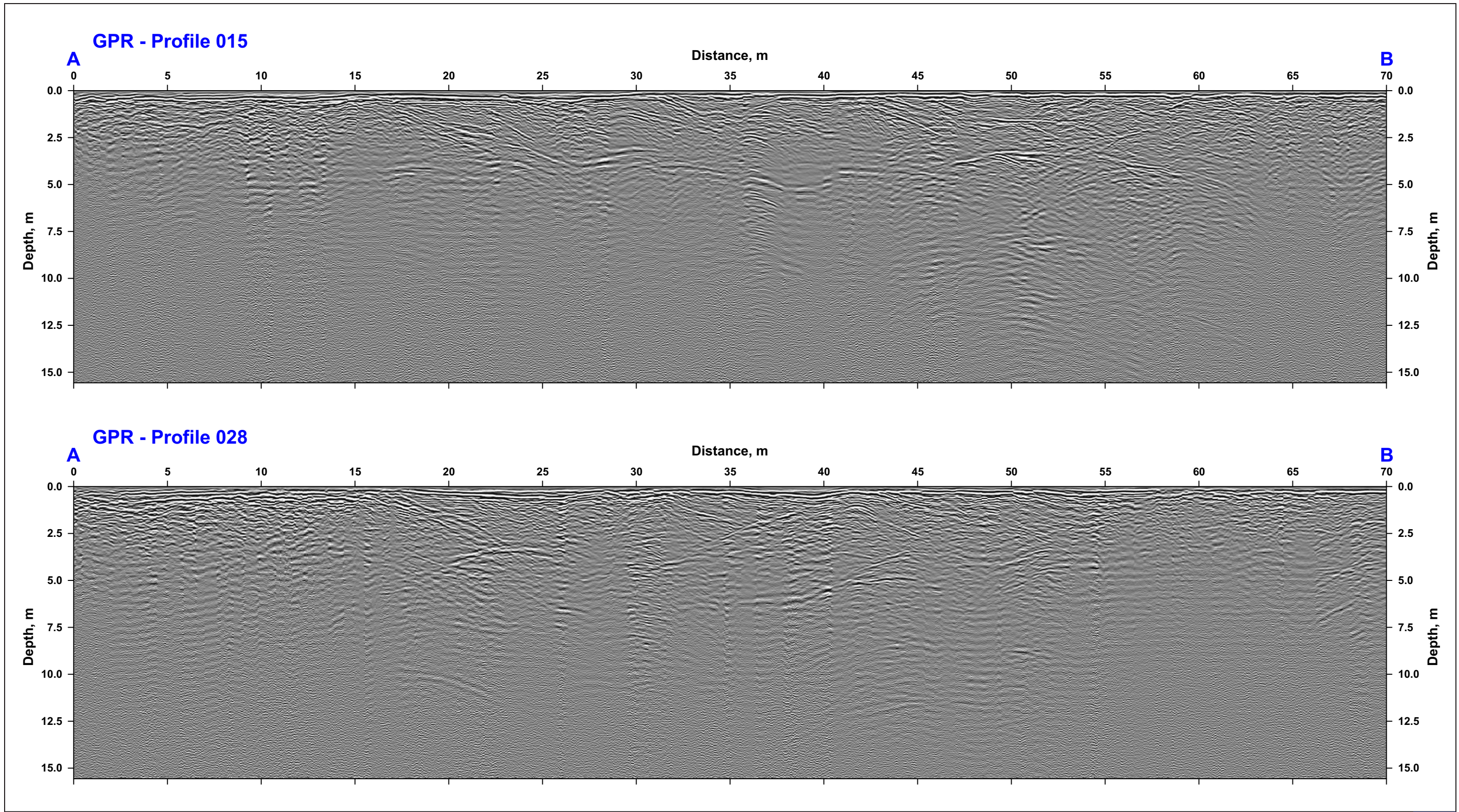


Figure C9 Ground penetrating radar survey using 160 MHz antenna on Profiles 015 and 028 at the Springpole site, ON (Page 1 of 2).

Project No. 3134	Document Reference FFC-NL-3134-002
Location Springpole, ON	Date December 2019



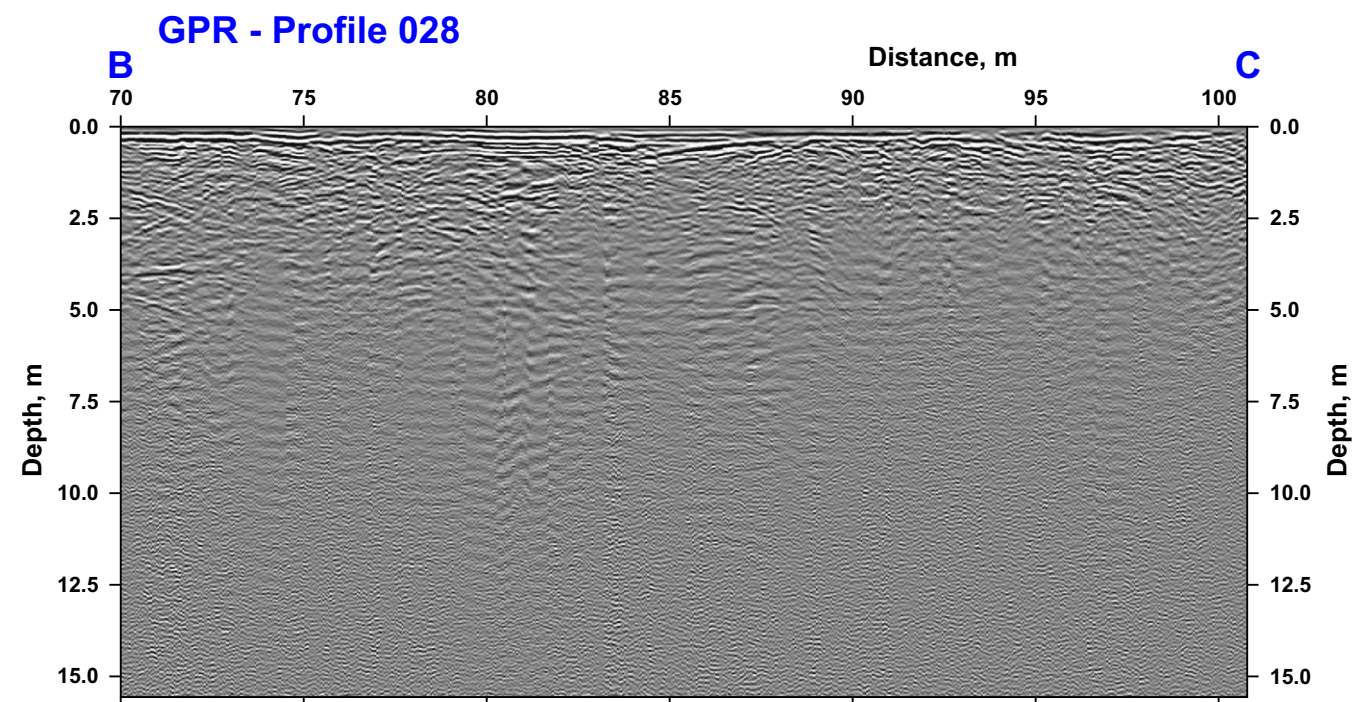
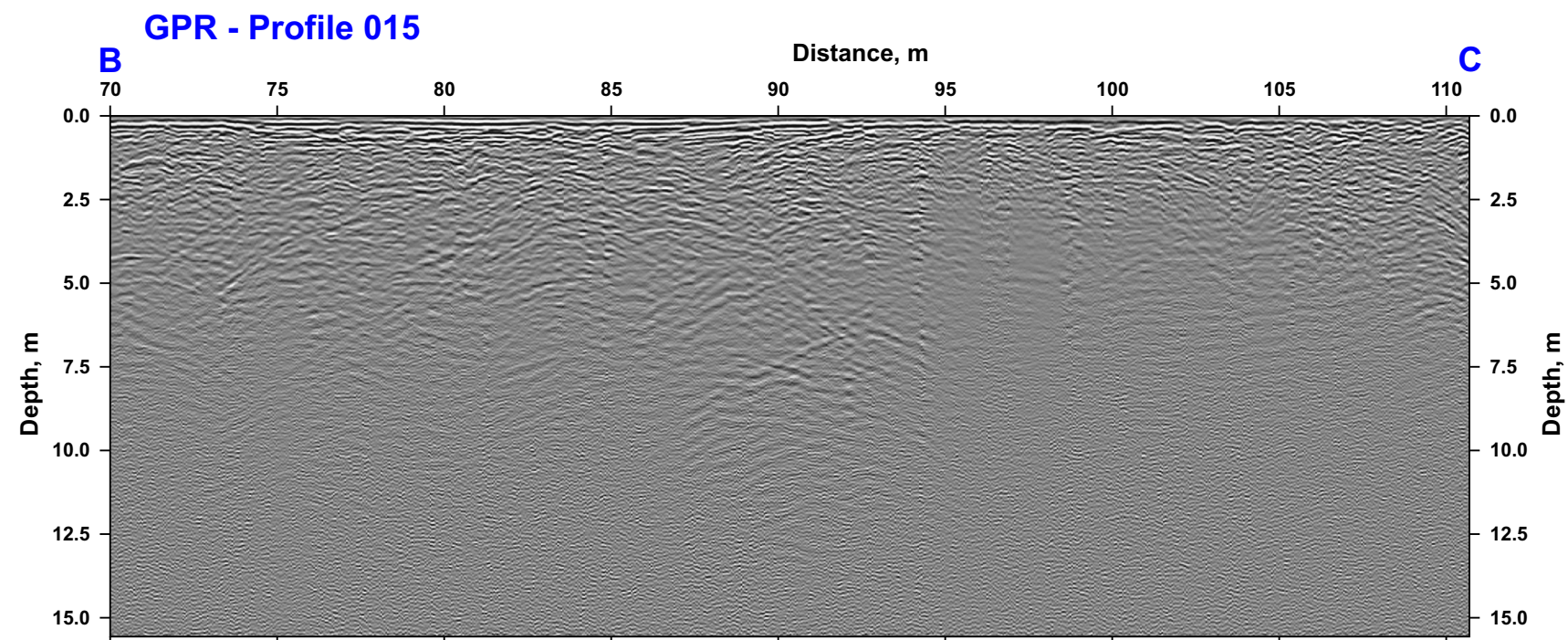


Figure C9 Ground penetrating radar survey using 160 MHz antenna on Profiles 015 and 028 at the Springpole site, ON (Page 2 of 2).

Project No. 3134	Document Reference FFC-NL-3134-002
Location Springpole, ON	Date December 2019

