



Appendix A.4c

Community Bulletins as
Completed for the Updated 2021 Beaver Dam Mine EIS

April 2018 Bulletin

Updates from Atlantic Gold Corporation on its mining projects



Atlantic Gold Corporation (AGC) has been sharing information and listening to you!

- On March 29th over 140 people attended an Open House in Sherbrooke regarding the proposed Cochrane Hill mine
- On March 27th approximately 35 people attended an Open House near Sheet Harbour regarding the proposed Fifteen Mile Stream mine
- In February, engagement sessions for Beaver Dam with Millbrook First Nations and the Sheet Harbour IR occurred where we learned about traditional uses of the land and discussed topics related to the Mi'kmaq. The purpose of these sessions was to respond to technical questions that Millbrook asked after reviewing the Environmental Impact Statement that AGC submitted to the Canadian Environmental Assessment Agency. If you would like to review the EIS, you can find it online at <https://ceaa-acee.gc.ca/050/evaluations/proj/80111>
- Many meetings have been held with individuals and community groups to discuss the different projects

If you attended our sessions, thank you for coming and sharing your thoughts and questions and opening your communities to us.



Where are AGC's mine projects?



AGC's mine projects include one active mine - Touquoy - and three other proposed mine sites: 1) Beaver Dam, 2) Cochrane Hill, and 3) Fifteen Mile Stream.

Updates on Projects

Touquoy

The Touquoy mine opened in October of 2017. This open pit mine is expected to be in production for four years and employs over 230 people. In addition to the full time roles, there are numerous contractors from the surrounding areas providing services. We are pleased that the hard work of our staff enabled the mine to achieve a significant milestone when

Beaver Dam

The Beaver Dam site is currently going through the Canadian Environmental Assessment Agency (CEAA) review. At this time, AGC is responding to the requests for additional information from CEAA. CEAA will then review all the data and submissions from the public and issue a decision statement with binding conditions. AGC hopes to have this mine on line and

Cochrane Hill & Fifteen Mile Stream

AGC is currently conducting baseline environmental studies, engaging with stakeholders, confirming technical details, and working with regulators as we move through the permitting and approval process. Along with this work, we are submitting Project Descriptions in May to the Canadian Environmental Assessment Agency (CEAA). This will determine the scope of the Environmental Assessment (EA) for each project. AGC will then complete a document for each individual project, called an Environmental Impact Statement (EIS), for submission to CEAA in late 2018 or early 2019.

AGC plans to open Fifteen Mine Stream mine in 2021 with Cochrane Hill brought online in 2022.

If you have questions or comments,
feel free to get in touch!

Community Phone Line: (902) 391-4653

Email: communityrelations@atlanticgoldcorporation.com

A community website will be launched soon. Stay tuned by visiting
www.atlanticgoldcorporation.com

If your community group would like a presentation on AGC activities in your area, please contact us.

[Subscribe to our Mailing List](#)

 [Atlantic Gold Corporation Website](#)

Copyright © 2018 Atlantic Gold Corporation. All rights reserved.

Our email address is:
communityrelations@atlanticgoldcorporation.com

Want to change how you receive these emails?
You can [update your preferences](#) or [unsubscribe from this list](#).

[Subscribe](#)

[Past Issues](#)

[Translate](#) ▼

[RSS](#) 

This email was sent to <<Email Address>>

[why did I get this?](#) [unsubscribe from this list](#) [update subscription preferences](#)

Atlantic Gold Corporation · 6749 Moose River Road, RR#2 | · Middle Musquodoboit, NS B0N 1X0 · Canada





ATLANTIC GOLD

July 2018 Bulletin

Atlantic Gold in the Community

Atlantic Gold is a proud supporter of community activities and groups. Below are some of the important events we've recently partnered to support.

Canada Day Celebrations in Sherbrooke!



The Municipality of the District of St. Mary's organized a fun-filled family oriented Canada Day. Atlantic Gold assisted by sponsoring the Fireworks and you may have even seen our name on the back of the volunteer T-shirts.



St. Mary's River Days Celebration

This is an annual event held by Sherbrooke Village to celebrate the historical roots of the area. Atlantic Gold is happy to support this important community event. On Sunday, there was a Sawmill/Goldmine Frolic celebrating the long history of gold mining in this area. The Frolic featured woodsmen competitions,



Innovative Partnership with Mitacs

Atlantic Gold was pleased to partner with Mitacs - a national not-for-profit organization that has designed and delivered research and training programs in Canada for 18 years. Working with 60 universities, thousands of companies, and both federal and provincial governments, they build partnerships that support industrial and social innovation in Canada.

Mitacs was founded in 1999 as a Canadian Network of Centres of Excellence, dedicated to supporting applied and industrial research in mathematical sciences and associated disciplines. In 2003, it launched a research internship program designed to increase deployment of highly educated graduates into the private sector. Open to all disciplines since 2007, Mitacs has expanded in response to industrial and university needs, including programs in R&D management, professional skills development, and international research training. Fully independent since 2011, Mitacs remains committed to its core vision of supporting research-based innovation and continues to work closely with its partners in industry, academia, and government.

Atlantic Gold partnered with Mitacs and Dalhousie University to explore wetland compensation. Find out more about this important work [here](#).



Atlantic Gold has confirmed the location of all wetlands on lands associated with a proposed mine. If wetlands are impacted by mine development then Atlantic Gold must obtain permits and provide compensation for those wetlands. This photo captures wetland science work being completed by an environmental consultant.

Notice from CEAA

Opportunity for Public Comment on the Fifteen Mile Stream Gold Project

The Canadian Environmental Assessment Agency (the Agency) has commenced a federal environmental assessment for the proposed Fifteen Mile Stream Gold Project located 95 kilometres northeast of Halifax, Nova Scotia.

The Agency invites the public and indigenous groups to comment on which aspects of the environment may be affected by this project and what should be examined during the environmental assessment, as detailed in the [draft Environmental Impact Statement \(EIS\) Guidelines](#). Comments received will be taken into consideration in finalizing the EIS Guidelines before issuing them to the proponent, Atlantic Mining NS Corp, a wholly owned subsidiary of Atlantic Gold Corporation.

This is the second of four opportunities for the public to comment on the environmental assessment of the project.

All comments received will be considered public. Written comments in either official language must be submitted by **August 20, 2018** to:

Fifteen Mile Stream Gold Project
Canadian Environmental Assessment Agency
200-1801 Hollis Street
Halifax, Nova Scotia B3J 3N4
Telephone: 902-426-0564
Email: CEAA.FifteenMile.ACEE@ceaa-acee.gc.ca

Atlantic Gold expects to submit Environmental Impact Statements (EIS) for the Cochrane Hill and Fifteen Mile Stream projects within the next year, and respond to Information Requests from CEAA regarding the Beaver Dam EIS submission. “How exactly does a proponent prepare an EIS?” and “What goes into it?” are questions that are often asked. Let us try and answer these important questions for you by explaining the first step when preparing an EIS.

An Environmental Impact Statement is a comprehensive document that examines the impacts on the valued components of a project that is subject to Environmental Assessment. The valued components, or VC's, vary from project to project but are defined by CEAA as “environmental, socioeconomic, human health, reasonable enjoyment of life and property, cultural, historical, archaeological, paleontological and architectural features that may be impacted, whether positive or negative, inside or outside the Province, by the proposed undertaking.”

Essentially VCs are important local conditions that may be affected in some way by what a proponent wishes to do. The EIS then goes on to study each valued component and how it may be impacted by a proposed project.

The first step in understanding impacts is a baseline study which establishes the existing conditions of the valued components. Since there are often many VC's, there are many studies. One example of a VC that people often think of is terrestrial habitat. Biologists and ecologists conduct field work to count and log wildlife, plants, trees and other ecological features of the land. These studies are important as the proposed project can and is often adjusted to minimize the impact on these features, especially if rare or endangered species are found. Once we understand what exists today, then we can calculate the impact the project will likely have on the VCs.

Groundwater is another standard valued component (VC) for projects. To fully understand the impact on groundwater, a hydrogeologist (a specialist in water that is in the ground) is brought in to test the quality and quantity of the groundwater before the mine is constructed. The groundwater flows are modeled to understand how the groundwater interacts with surface water, peoples' wells and other factors. After the baseline and impact study is completed, the consultant places his or her “stamp” on the final report, which is then summarized or included in the EIS. The “stamp” from the professional is very important as it guarantees that the work is done impartially and to a standard acceptable to other experts in the subject.

The EIS is a complex technical document that is based on science and research. The goal is to fully explore and communicate the impacts of a potential project on a variety of factors (Valued Components). The decision of the federal government is based on this report, and proponents work very hard, and spend a great deal of time and resources to make sure the EIS is comprehensive and accurate.

Focus on Fifteen Mile Stream

The Project Description is the first step in the CEAA process, that will eventually lead to a decision by the Federal Government regarding the Fifteen Mile Stream proposed gold mine. The [Project Description](#) is an overview of the project and is used by CEAA to determine if a complete Environmental Impact Statement is required. On July 16th, Atlantic Gold was notified that a full Environmental Impact Statement will be required, and CEAA is now seeking comments on the [Draft EIS Guidelines](#) that Atlantic Gold must follow when preparing the Environmental Impact Statement (EIS). Atlantic Gold intends to submit the EIS in March of 2019 and will be holding public meetings to provide additional details

Here are some interesting tidbits from the Project Description about the Fifteen Mile Stream Project. The full document can be found on the [CEAA website](#).

- The Project Area is primarily comprised of disturbed areas from clear cutting and historical mining activities.
- The nearest domestic well is 12.5 kilometers away from the site, based on information from the provincial database.
- An open-pit mine will be developed that will be approximately 0.6 and 0.4 km wide and will have a maximum depth of 150 m. At the conclusion of mining, the pit will eventually refill with water and become a small lake that will provide healthy fish habitat.
- About 1.3 of the Seloam Brook stream channel will be realigned. The current alignment of the stream was impacted by historical mining operations and tailings from years gone by. The proposed new realignment will help to rectify this situation and will result in new and enhanced fish habitat.
- There have been two archeological studies to date with another planned in 2018. In the event that Mi'kmaw archaeological finds are encountered during construction or operation of the Project, work will be halted in the vicinity of the discovery and immediate contact will be made with the Nova Scotia Museum and The Confederacy of Mainland Mi'kmaq. Should the proposed project site change or expand, additional research will be conducted.
- Prior to the completion of mining activities, the local community and Mi'kmaq will be consulted on what their expectations are on final land use for the area and these wishes will be reflected in a final Reclamation Plan. After mining is finished the final Reclamation Plan will be implemented. Reclamation will include regrading and re-vegetation so that conditions can be made safe and stable and in accordance with regulation and community and Mi'kmaq expectations. Monitoring of site conditions and water quality until deemed necessary by the Province and local community stakeholders.

Engaging with Stakeholders and Rights Holders



Atlantic Gold will be holding a number of community meetings in the fall or winter for the Cochrane Hill and Fifteen Mile Stream projects. These events will be widely publicized so keep an eye out for them. In addition, Atlantic Gold will also be engaging with the Mi'kmaq on Atlantic Gold projects.

To find out more about the duty to consult with Indigenous groups as part of an

[Duty to Consult](#)



The Touquoy mine is named after Damas Touquoy, who is pictured sitting in front of his home/office in Moose River in 1897. More about this history of mining can be found on the Art Galley of Nova Scotia's [virtual museum website](#).

E. R. Faribault. Geological Survey of Canada Photo #5295.

Updates on Projects

Touquoy

Operations at our Touquoy mine location continue to be productive and Atlantic Gold now has over 240 full-time staff working on the site and anywhere from 46-70 full-time contractors as well.

Since commercial production started and thanks to the hard work of our dedicated staff, Atlantic Gold has sold 40,452 ounces of gold for the first 6 months of 2018. The monthly benefits to the local provincial economy based operational activities is approximately 4.3 million per month.

We have also made some very interesting discoveries of artifacts from previous mining in the Touquoy area. Historical mining equipment and horseshoes have been recovered and those items are submitted to the the [Moose River Gold Mines Museum](#) for its collection.

Beaver Dam

Atlantic Gold is working on responses to the Information Requests from CEEA regarding the Environmental Impact Statement submitted in June 2017. CEEA compiles questions for the proponent to answer based on the public's questions and comments on the proponent's submission. We are taking our time to answer these questions and consider the comments carefully and plan to have the responses ready this fall.

Atlantic Gold is also reaching out to property owners near the proposed haul road and mine site to discuss the projects. If you feel you may be impacted, please contact us.

Atlantic Gold plans to submit the Project Description in August. The public comment period on the Project Description will occur shortly after and we will issue a notice to the public when that occurs. Over the summer, Atlantic Gold and its contractors will be conducting field work, such as breeding bird studies, taking samples of the soil and bedrock to better understand its composition, water modeling, and other technical and environmental work.

The Community Liaison Committee (CLC) will have its first meeting over the summer. A CLC is a group composed of local residents, business owners and others who provide a conduit between Atlantic Gold and the community. We would like to thank all those who volunteered to sit on the committee.

The Project Description for Fifteen Mile Stream was submitted to CEAA on May 22nd. CEAA then sought public comments on our submission until June 21st. On July 16th, CEAA determined that a federal environmental assessment is required and issued draft Guidelines for the Preparation of an Environmental Impact Statement. This is the second of four opportunities throughout the Environmental Assessment process for the public to provide comment to CEAA.

Atlantic Gold is recruiting for members for the Community Liaison Committee who will act as conduits between Atlantic Gold and the community. If you are interested in serving on the committee, live in the local area, and are interested in learning more about the proposed mine, please [email us](#).

If you have questions or comments,
feel free to get in touch!

Community Phone Line: (902) 391-4653

Email: [Community Relations](#)

Visit our community website
at <http://www.atlanticgoldcorporation.com/community/>

If your community group would like a presentation on AGC activities
in your area, please contact us.

Subscribe to our Mailing List

 [Atlantic Gold Corporation Website](#)

Copyright © 2018 Atlantic Gold Corporation. All rights reserved.

Our email address is:
communityrelations@atlanticgoldcorporation.com

Want to change how you receive these emails?
You can [update your preferences](#) or [unsubscribe from this list](#).

[Subscribe](#)

[Past Issues](#)

[Translate](#) ▼

[RSS](#) 

This email was sent to <<Email Address>>

[why did I get this?](#) [unsubscribe from this list](#) [update subscription preferences](#)

Atlantic Gold Corporation · 6749 Moose River Road, RR#2 | · Middle Musquodoboit, NS B0N 1X0 · Canada





ATLANTIC GOLD

October 2018 Bulletin

Atlantic Gold in the Community

Atlantic Gold is a proud supporter of community activities and groups. Below are some of the important events we've recently partnered to support.



**NOVA SCOTIA
MI'KMAW
SUMMER GAMES**

Nova Scotia Mi'kmaq Summer Games 2018

Congratulations to all participants, volunteers and organizers of the Mi'kmaq Summer Games held August 19-26 in Eskasoni. The mission of these games is, "To inspire youth and young adults to believe in themselves, achieve their dreams and unite with all indigenous communities to share and learn Mi'kmaq culture and traditions."

Since 2010, these games have provided opportunities for young people to gather together in friendship and sport, creating lifelong memories.

Atlantic Gold was happy to support the 2018 Mi'kmaq Summer Games and its mission.



Atlantic Gold & HRFE Work Together on Emergency Preparedness

The closest Halifax Regional Fire and Emergency (HRFE) Fire Station to our Touquoy site is Middle

volunteer firefighters. We are proud to have several of those volunteer firefighters from Middle Musquodoboit and other communities as Atlantic Gold staff members.



As part of our commitment to continuous improvement of our safety procedures and the communities surrounding our operations, Atlantic Gold has commenced developing a memorandum of understanding with HRFE. This agreement will ensure that, on the occasion where our community is faced with an emergency event, our staff are trained on how best to respond with the common goal of ensuring the safety of our workers and community members.

In August, members of the Atlantic Gold Emergency Response Team had the opportunity to complete hands-on training with the staff of HRFE at Station 38 (pictured). Since that training session, HRFE has visited Atlantic Gold staff at the Touquoy mine site to exchange knowledge and learn from each other, with more visits scheduled in the future.

Atlantic Gold sponsor Women's Rugby Team - win silver at Canadian Rugby Championships

Atlantic Gold is extremely proud to sponsor Rugby Nova Scotia's Senior Women's Keltics team. This past July, the team traveled to Saskatoon to represent Nova Scotia at the Canadian Rugby Championships and won a silver medal after just narrowly losing to the Ontario Blues.



We are so proud to support this team and we congratulate them on their extraordinary play this season. **Go Keltics!**





Breakfast with Community Leaders

Atlantic Gold representatives were honoured to attend a breakfast hosted by Sherbrooke Village with Premier Stephen McNeil, local politicians and community leaders from the Sherbrooke area. It was wonderful to hear about the historic village's current activities and exciting future plans. Of particular note was the announcement by Richard Oland of a donation of 660 acres to support [RICHES](#). After the breakfast, Jim Millard from Atlantic Gold toured the Village and participated in an impromptu temperance rally where museum staff had some fun demonstrating the social mores of 1867.

Atlantic Gold's Projects

Planning, developing, building, operating and reclaiming a closed down mine is a complex technical and social process. In this section, we provide information about our current and future projects.

Understanding Community Liaison Committees

Mining projects require strong communication with the local community through all stages of the mine - planning, development, operation, and reclamation. One of the main vehicles for communication is the Community Liaison Committee (CLC), sometimes known as a Citizens Liaison Committee.

A CLC is a committee where local community members, the proponent (representatives of the company wishing to build and operate the mine) and others who are considered stakeholders regularly meet to talk about the Project. The Mi'kmaq are also invited to attend and participate in the CLC, although they may wish to use a more direct method of communication with the proponent as they are rightsholders (meaning they have unique rights). Unlike

Nova Scotia Environment (NSE) published [guidelines](#) for the operation of a CLC, which talks about how CLC's should function:

Effective CLCs maintain good public relations, foster environmental stewardship, and act as a vehicle for transparent and ongoing communications between community, stakeholders, and the proponent on matters pertaining to current and planned development in the community.

Each CLC has a terms of reference (TOR) which varies from project to project so that the unique elements of each mine project and community are respected. However, the main goals of a CLC, as defined by NSE, are:

- to act as an advisory body to a project proponent by providing input on existing or potential concerns of the community with respect to the project plan and activities; and
- to respect community interest by providing an avenue for the mutual exchange of information between the proponent and the community with respect to any existing or potential environmental effects of the project plan and activities.

CLCs are often a condition of an Environment Assessment Approval and are required prior to operations starting. Many projects opt to have the CLC in place well before operations begin, but each project is unique. Atlantic Gold has chosen to form a CLC for the Cochrane Hill and Fifteen Mile Stream Projects during the environmental assessment stage before much of the permitting has been completed. This provides an important link between our company and the communities in which we will be operating. Topics that CLCs cover can include: operations, mine planning, reclamation, discussions of community impacts, traffic and economic development. The CLC does not have any decision-making power but is the place where the community and the proponent can come together to share information and exchange perspectives.

The members of the CLC are tasked with talking with neighbours, co-workers, and others within their local areas to share information they have learned at the meetings and to listen to questions or issues that need to be brought back to the CLC. Members are not advocates for the project, but instead help facilitate communications between all parties.

Atlantic Gold has two active CLCs for Touquoy (which includes Beaver Dam) and Cochrane Hill, and is in the process of striking a CLC for Fifteen Mile Stream. The meetings are not open to the public, but meeting notes are approved by the CLC and available on the [Atlantic Gold website](#).

If you live near Trafalgar, Malay Falls or Sheet Harbour and are interested in participating in the Fifteen Mile Stream Community Liaison Committee, please contact communityrelations@atlanticgoldcorporation.com or call 902-391-4653.

Fifteen Mile Stream Gold Mine Project

Guidelines for the Preparation of an Environmental Impact Statement (EIS)

The Canadian Environmental Assessment Agency (CEAA) has issued the "Guidelines for the Preparation of an EIS" which outlines the minimum information requirements for Atlantic Gold as it prepares the EIS for Fifteen Mile Stream (FMS). Before the Fifteen Mile Stream project can proceed, CEAA must receive and approve an EIS submitted by Atlantic Gold.

This 45-page Guideline document was developed after CEAA and other regulatory agencies, such as Nova Scotia Environment (NSE), reviewed the Project Description. CEAA also considered comments from the public on the Draft Guidelines. Now that the Guidelines are finalized, Atlantic Gold must meet or exceed all requirements in the Guidelines when submitting an EIS before CEAA can consider making a decision on the project.

Valued Components:

The key ingredient of any EIS, and the section on which the Guideline document provides the most direction, is in the effects assessment where the Valued Components (VCs) are analyzed. VCs are identified based on a review and evaluation of the environmental effects of a Project. When residual environmental effects from the Project are expected, those VCs are identified for consideration in the cumulative effects assessment section of the EIS.

In other words, the EIS will consider and fully explore the impacts (both negative and positive) of the proposed gold mine on any identified environmental, social or cultural aspects of the local area.

With 45 pages of guidelines, final EIS's are often over 1000 pages long and include summaries of detailed scientific studies that explore the specific impacts on the Valued Components. Atlantic Gold, through the EIS, is required

For those interested in the details provided in the Guideline document, Part 2 of the Guidelines establishes the specifics for the EIS that Atlantic Gold will submit. The EIS must include sections on:

- Introduction and Overview
- Project Justification and Alternatives Considered
- Project Description
- Public Participation and Concerns
- Engagement with the Mi'kmaq of Nova Scotia and Concerns Raised
- Impacts to Potential or Established Aboriginal or Treaty Rights
- Effects Assessment
- Follow-up and Monitoring Programs
- Responses to Nova Scotia Environment Requirements

to "Demonstrate that all aspects of the project have been examined and planned in a careful and precautionary manner in order to avoid significant adverse environmental effects" (Section 2.4 of FMS guidelines).

[Click here to download the Guidelines \(45 pages\)](#)

The final EIS will be submitted to CEAA in the winter of 2019. More updates will follow as the EIS progresses, including opportunities for the public to provide comment on the Project.

Stakeholder and Rights Holder Engagement

Over the last several months, Atlantic Gold has continued to meet with multiple stakeholders and rights holders. Although no public meetings have been held, we continue to engage with government, community groups, individuals and the Mi'kmaq.

You can always reach out to Atlantic Gold by phone to our community phone line 902-391-4653 or by email to communityrelations@atlanticgoldcorporation.com.

Project Updates

Touquoy

Operations at our Touquoy Mine location continue to be positive and gold production is ahead of forecasts for the year. We continue to employ over 240 full-time staff on site and approximately 40-70 full-time contractors as well.

In an effort to highlight the good works done on the Touquoy Mine site everyday, Atlantic Gold has begun to showcase employees on our company website. Click [here](#) for profiles of Charles (a Haul Truck Operator), Ryan (an Environmental Engineer-In-Training) and Vicki (a Security Officer) and a look at their important contributions to our mining activities. There will be more profiles published in the weeks ahead so please continue to visit the page.

Beaver Dam

Atlantic Gold is working on submitting a revised EIS in December 2018 to respond to information requests from CEAA.

We are also seeking information from people who use the land near the proposed haul road, between the Moose Land Road and Hwy 224. Atlantic Gold wants to better understand how people use this land, and how they access it.

For example, do you walk your dog, camp, hunt, log or access another property from this road?

This information will help Atlantic Gold develop a road access plan that will accommodate existing and potential future users of the road.

Cochrane Hill

Atlantic Gold took the first step in the Environmental Assessment process by submitting a Project Description document on September 28, 2018. Draft EIS Guidelines are now open for [public comment](#) and will be received by CEAA until October 29th.

The Cochrane Hill Community Liaison Committee (CLC) had its first meeting in August, and met again on October 1st. The meeting notes will be posted on our website once approved by the committee. The first meeting provided an orientation to members on the role of a CLC, and gave a high-level overview of the Project.

Atlantic Gold also continues to conduct exploration, scientific and engineering studies of the area and as such, community members may see some drilling in the area. This work has all been permitted by the necessary regulatory authorities and has landowner permission.

Fifteen Mile Stream

Atlantic Gold continues to gather information and collate data for an Environmental Impact Statement that will be submitted in Winter 2019. Meetings to gather feedback from the public will occur in February 2019 and will be announced once details are finalized.

Atlantic Gold continues to recruit members for this Project's Community Liaison Committee who will act as conduits between Atlantic Gold and the community. If you are interested in serving on the committee, live in the local area, and are interested in learning more about the proposed mine, [please email us](#). The first meeting will be this fall.

 [Atlantic Gold Corporation Website](#)

Copyright © 2018 Atlantic Gold Corporation. All rights reserved.

Our email address is:
communityrelations@atlanticgoldcorporation.com

Want to change how you receive these emails?
You can [update your preferences](#) or [unsubscribe from this list](#).

[Subscribe](#)

[Past Issues](#)

[Translate](#) ▼

[RSS](#) 

This email was sent to <<Email Address>>

[why did I get this?](#) [unsubscribe from this list](#) [update subscription preferences](#)

Atlantic Gold Corporation · 6749 Moose River Road, RR#2 | · Middle Musquodoboit, NS B0N 1X0 · Canada





ATLANTIC GOLD

February 2019 Bulletin

Atlantic Gold in the Community

Atlantic Gold is a proud supporter of community activities and groups. Below are some of the important events we've recently partnered to support.

Saint Mary's Fire Department Annual Picnic



Atlantic Gold was pleased to support the Saint Mary's Fire Department Annual Picnic by donating items for their raffle. Thank you to all volunteers who donated so much time to their community.

**Atlantic Gold continues to support the
Musquodoboit Valley Food Bank and Family**



Over the holiday season, Atlantic Gold was proud to join the staff of both the Musquodoboit Valley Food Bank and Musquodoboit Family Resource Centre to provide financial support and gifts for those in need. In December, Atlantic Gold's Touquoy General Manager, Tony Woodfine presented the Musquodoboit Valley Food Bank's Betty Lou Tilley with a cheque and toys for children in need. Additionally, a presentation of a financial donation and gifts was made to the Musquodoboit Family Resource Centre.

Atlantic Gold supports the Nova Scotia Nature Trust Dinner



In October 2018, Atlantic Gold was proud to support the Nova Scotia Nature Trust's Annual Dinner and Auction as a Conservation Sponsor. We congratulate the Nova Scotia Nature Trust for the conservation work they do and on the success of their annual dinner.



Atlantic Gold believes that the only good gold production is safe gold production. As part of this commitment, we are investing in the next generation of mining engineers by supporting Dalhousie University students with Emergency Response Team (ERT) training. The safety and first aid lessons they learn will help them at home, at school and in their communities.

On November 30th, 2018, four members of the Dalhousie University Engineering program participated in one of Atlantic Gold's monthly ERT training sessions. Topics covered included patient assessment, altered levels of consciousness, airway management, and patient extrication.

The four Dalhousie students, Sam Rolfe, Ross Bagnell, Robert Barrett, and Kyle Lamont, are a part of the Dalhousie University Engineering Team, supported by Atlantic Gold, which will be attending the Canadian Mining Games in Edmonton Alberta, from February 21 to 24, 2019.

The Dalhousie team members will return to Touquoy to participate in further training that will teach them about shock, respiratory protective equipment, and injury management.

As the final phase of their training, the Dalhousie team will monitor a live drill scenario, which will evaluate the Emergency Response Team's management of an incident of significance, and the implementation of the Atlantic Gold Emergency Response Plan.



Information about Atlantic Gold's Mining Projects

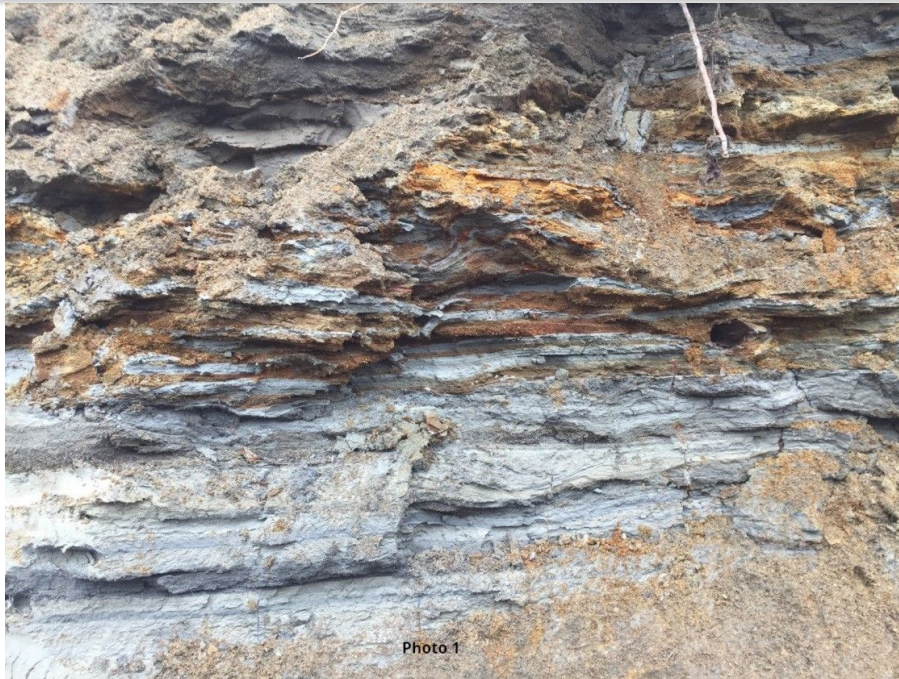
In each newsletter, we provide technical information on Atlantic Gold's ongoing projects.

Tailings Remediation

An update on 2018 activities

Atlantic Gold is pleased to report the successful remediation of historic tailings at our Touquoy Gold Mine. Tailings are the waste materials left after the process of separating valuable fraction (such as gold) from the uneconomic fraction of an ore. Tailings consist of ground rock and process effluents. Historic tailings are known to exist throughout the Province on former mining sites. They present an environmental concern and liability to the Province due to the presence of various contaminants like mercury and arsenic. Nova Scotia Environment is working with Atlantic Gold, among other companies, to clean up historic tailings at various locations in the Province.

The historic tailings found at the Touquoy site are estimated to be at least 100 years old. Tailings can vary in color from light brown to dark grey. They can be deposited in layers, also known as “beaching”, as can be seen in **Photo 1**, by year-over-year deposition over time. During 2017 and 2018, Atlantic Gold completed various assessment programs to identify the locations and extent of historic tailings across the Touquoy site. This work involved digging many test holes and trenches, as well as, the collection of samples to test for environmental contaminants. An estimated 54,000 cubic metres of historic tailings were identified within the footprint of the Touquoy open pit mine. That’s enough tailings to fill 22 Olympic size swimming pools!



After consultation with various environmental professionals and Nova Scotia Environment, Atlantic Gold developed a plan to manage the presence of historic tailings at the Touquoy mine site. This work involved the construction of an engineered containment cell to house and eventually encapsulate the historic tailings disturbed during Touquoy mining operations. The cell was constructed in the summer of 2018 inside Atlantic Gold's Tailings Management Facility (TMF), which is a large engineered storage facility designed to capture and treat tailings and effluent generated from the modern ore processing method.

In summer and fall of 2018, with the help of environmental professionals and using large mining equipment, Atlantic Gold was able to dig out 23,000 cubic metres (9 Olympic-sized swimming pools) of historic tailings (see Photo 2) and safely transport them to the engineered containment cell, where they will pose little risk to the environment.



While much progress was made in 2018, there are still historic tailings remaining on

Atlantic Gold plans to continue the remediation of historic tailings as the Touquoy open pit progresses during 2019. This ongoing work will continue to improve the environment at the site and surrounding areas in an effort to reduce the Province's overall environmental liability due to historic contamination on Crown Lands.



Engaging with the local community during the planning of a gold project is valuable and essential to ensure that quality information is provided to the people most impacted by a proposed project. Atlantic Gold believes communities have much to gain from Atlantic Gold mine projects, but also recognizes that historical Nova Scotian mining operations and mining practices in other places around the world can cause skepticism about Atlantic Gold's current and future operations.

Gaining trust is a long process, but we at Atlantic Gold want to provide you with honest and accurate information to create an understanding of the potential impacts of our mines. Here are a few things we are doing to build productive relationships and share information with local communities, residents and the Mi'kmaq:

- Producing a quarterly newsletter.
- Responding to all inquiries on our dedicated phone line and email address.
- Posting information on Atlantic Gold's website and social media accounts.
- Presentations to community groups, organizations and local government.
- Talking with surrounding property owners.
- Establishing local offices in Sherbrooke and Sheet Harbour.
- Establishing and operating Community Liaison Committees for Cochrane Hill, Fifteen Mile Stream and Beaver Dam/Touquoy.
- Establishing an apprenticeship program, in partnership with the Nova Scotia Apprenticeship Agency and Nova Scotia Community College, to support and encourage people who are pursuing the trades as a career.
- Establishing and funding a Community Sponsorship Program.
- Joining the Sheet Harbour Chamber of Commerce to better understand and participate in the local business community.
- Upon request, providing opportunities to tour the Touquoy Mine site.
- Holding public open houses before the submission of Environmental Impact Statements to the Canadian Environmental Assessment Agency.
- Adjusting mine plans, as we are able, in response to community issues or suggestions. This has happened several times already.
- Providing technical experts to respond to questions.
- Hear from our staff and let them tell you about Atlantic Gold on our [YouTube Channel](#).

communityrelations@atlanticgoldcorporation.com or by phone at 902-391-4653 to discuss your suggestions.



Learn about our Atlantic Gold's impact on local business

Understanding Wetlands

A Wetland Specialist's
explanation

Understanding wetland habitat is a key component of the environmental assessment process. In Nova Scotia, all wetland habitat is protected under the provincial wetland policy. These habitats must be fully evaluated and understood before regulatory approvals are granted by the Province. These habitats are diverse, productive ecosystems which provide a wide variety of ecological functions and are usually one of the first habitats that are evaluated in any environmental assessment process.

So what is a wetland anyway? Three parameters are used to define wetland habitat: hydrology, hydrophytic (or water-loving) vegetation, and hydric (or saturated) soils. Wetlands form an incredible transition zone between aquatic and terrestrial habitat, or in other words, between the water and the land. Using these three parameters, wetland specialists walk the study area to map wetland boundaries. These boundaries are mapped with a GPS unit, and flagged. Once the wetland boundaries are confirmed, wetland specialists use the Canadian Wetland Classification System to describe the habitat type (i.e. bog, fen, swamp, etc.), and evaluate wetland functions using the Wetland Ecosystem Services Protocol for Atlantic Canada (WESP-AC).

Understanding wetland systems helps to guide and inform many other environmental surveys, including birds, mammals, amphibians, reptiles, fish, flowering plants and lichens (including species at risk in each group) surveys. This information is used to plan for project infrastructure so that impacts to wetlands are minimized, important wetlands avoided and the impacts to plant and animal habitat reduced as much as possible. Given that wetlands are protected in Nova Scotia, the process of delineating (mapping) wetlands allows Atlantic Gold to compensate for any unavoidable impacts to wetland habitat. Compensation for lost wetland habitat is required within Nova Scotia to meet the obligations of *no net loss* of

The purpose of wetland compensation is to create a healthy and sufficiently sized wetland to make up for the loss of habitat elsewhere, and the role that the impacted wetland played before being altered for development. When Nova Scotia Environment (NSE) provides an approval to alter a wetland (such as draining, filling, flooding or excavation) it also requires a wetland to be restored, created or enhanced elsewhere to balance any loss during the alteration process. Determining the type of wetland compensation depends on the details of each situation. It usually involves restoring, enhancing or creating wetland habitat but may also be provided in other forms, such as education, research or protection. The specific compensation program details for each project need to be negotiated with Nova Scotia Environment's local inspectors and wetland specialists.



Atlantic Gold has taken a significant next step forward in developing the next generation of tradespeople in Nova Scotia by launching apprenticeship programs in several key areas.

Initially, we are training four millwright apprentices and two heavy equipment apprentices. There will be future opportunities for Industrial Electricians and Instrumentation Technician apprenticeships.

Atlantic Gold fully supports each apprentice through employment to ensure they receive the required hours on the job and while they attend the educational portion of the apprenticeship at a recognized institution. As Atlantic Gold continues to grow in the province of Nova Scotia, we plan to grow our apprenticeship program to meet much of our need for Red Seal qualified tradespeople.

Beaver Dam Update

Atlantic Gold continues to work through the Information Requests (IR's) from the Canadian Environmental Assessment Agency (CEAA) on the company's EIS submission in 2017, and will be submitting written responses to the IRs in February. CEAA will then

Touquoy Update

Operations at the Touquoy mine continue to be positive as Atlantic Gold recently announced that full-year production for 2018 reached 90,531 ounces of gold. Production for 2019 is anticipated to be between 92,000 and 98,000 ounces. Staffing levels at the mine

information requests for Atlantic Gold.

time contractors are currently working on site everyday.

Fifteen Mile Stream Update

Atlantic Gold plans on submitting its Environmental Impact Statement (EIS) to the Canadian Environmental Impact Assessment in April 2019. Once the EIS is received by CEAA there will be an opportunity for the public to provide comment directly to the Agency. Then, CEAA will compile the responses and submit questions back for Atlantic Gold to answer. These information requests will then be responded to and the project adjusted as necessary.

Cochrane Hill Update

Atlantic Gold is completing a variety of technical studies that will form the basis of the Environmental Impact Statement (EIS) scheduled for submission to CEAA in June 2019. No date has been planned to present the findings of the EIS to the community, but we anticipate an open house will occur in May. In addition, Atlantic Gold will provide an update to the local communities near the Cochrane Hill project by circulating an informational flyer. We encourage residents near the proposed Cochrane Hill Gold Project to check their mailboxes in the weeks ahead for an update from Atlantic Gold.



YOU'RE INVITED TO AN....

Open House Fifteen Mile Stream Gold Project

March 14, 2019 | 3-5pm 6-8pm

202 Pool Road - Eastern Shore Wildlife Building
Sheet Harbour

DROP IN ANYTIME BETWEEN 3-5 AND 6-8



Twitter




www.atlanticgoldcorporation.com



LinkedIn



YouTube

 Forward to a friend

Copyright © 2019 Atlantic Gold Corporation. All rights reserved.

Our email address is:

communityrelations@atlanticgoldcorporation.com

Community Phone Line: 902-391-4653

Want to change how you receive these emails?

You can [update your preferences](#) or [unsubscribe from this list](#).

This email was sent to <<Email Address>>

[why did I get this?](#) [unsubscribe from this list](#) [update subscription preferences](#)

Atlantic Gold Corporation · 6749 Moose River Road, RR#2 | · Middle Musquodoboit, NS B0N 1X0 · Canada



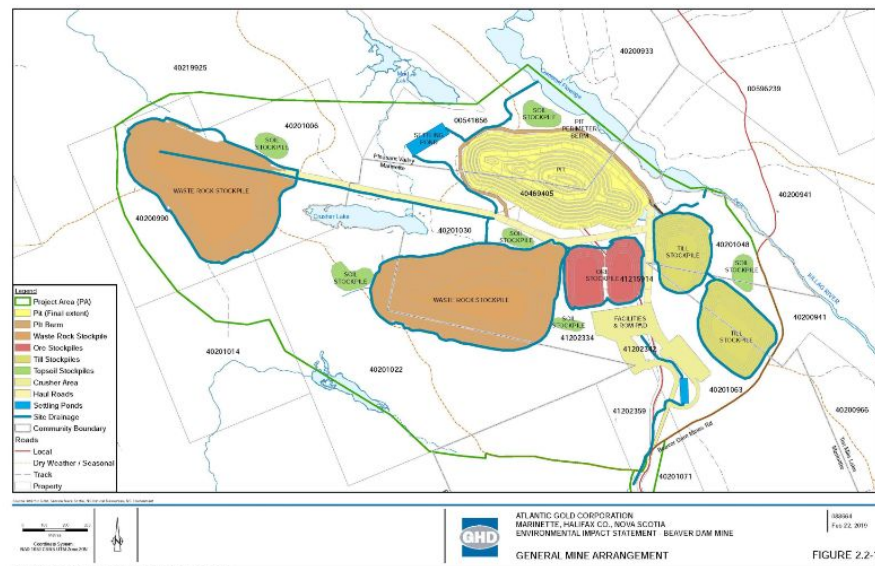
Special Notice

Revised Beaver Dam Environmental Impact Statement posted on CEAA website

Notice of Revised EIS

Beaver Dam

In June 2017, Atlantic Gold submitted an Environmental Impact Statement (EIS) on the proposed Beaver Dam Gold Mine Project to the Canadian Environmental Assessment Agency (CEAA). Recently, CEAA posted Atlantic Gold's responses to Information Requests on the Beaver Dam Gold Mine Project Environment Impact Statement to its [website](#). The revised EIS is now available for the public to view.



Beaver Dam Gold Project revised infrastructure layout

Revised Environmental Impact Statement

Atlantic Gold Corporation
Beaver Dam Mine Project

February 2019

PRESENTED TO
THE CANADIAN ENVIRONMENTAL ASSESSMENT AGENCY
and NOVA SCOTIA ENVIRONMENT



Atlantic Gold Corporation submitted a revised Environmental Impact Statement to the Canadian Environmental Assessment Agency for its Beaver Dam Mine Project. Read the entire document [here](#).



If you have any questions about the Beaver Dam Mine Project please contact:

Community Phone Line: (902) 391-4653
Email: communityrelations@atlanticgoldcorporation.com

www.atlanticgoldcorporation.com

Subscribe to our Mailing List



Twitter



<http://www.atlanticgoldcorporation.com/>



LinkedIn



YouTube

Copyright © 2019 Atlantic Gold Corporation. All rights reserved.

Our email address is:

communityrelations@atlanticgoldcorporation.com

Want to change how you receive these emails?

You can [update your preferences](#) or [unsubscribe from this list](#).

This email was sent to <<Email Address>>

[why did I get this?](#) [unsubscribe from this list](#) [update subscription preferences](#)

Atlantic Gold Corporation · 6749 Moose River Road, RR#2 | · Middle Musquodoboit, NS B0N 1X0 · Canada





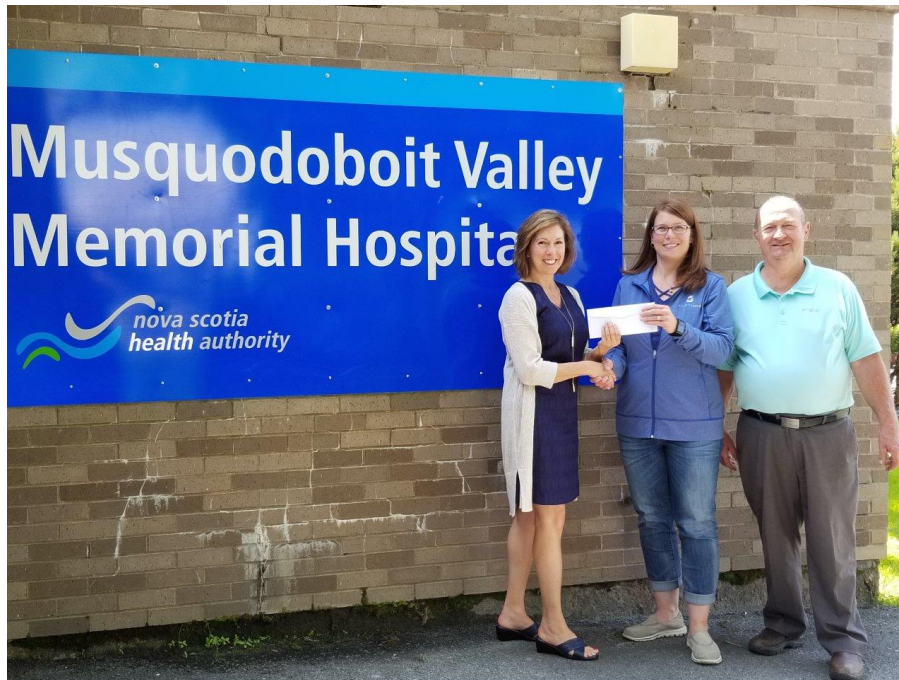
November 2019 Bulletin

Atlantic Gold: In the Community

Atlantic Gold is a proud supporter of community activities and groups. Below are some of the important events we've recently partnered with to support.

**Atlantic Gold Supports
Local Hospital**

Community



Health care is an important issue for all Nova Scotians, including Atlantic Gold employees. Recently, the Musquodoboit Valley Health Foundation announced that they would be fundraising for the purchase of a mobile ultrasound unit to better serve patients in and around Middle Musquodoboit.

The Musquodoboit Valley Memorial Hospital had the use of a mobile ultrasound last summer on loan. This saved many patients from travelling to Halifax for tests – they also believe the speed of having timely results may have saved

the Musquodoboit Valley Memorial Hospital, and her staff for the purchase and full-time use of a mobile ultrasound machine.

At a presentation in July, Jennifer Adshade (Environmental Analyst with Atlantic Gold) presented Tom and Diana with a cheque for \$5,000 to help the Musquodoboit community obtain this important health equipment. Additional sizable donations from government levels and donations from community members led to the hospital receiving their new ultrasound machine.

Congratulations all around!

Atlantic Gold Green Team

Environment



Sustainability and environmental responsibility are top-of-mind for all Atlantic Gold employees. When it comes to our operations and the communities where we operate, we don't just work here, we live here, too!

Recently, a group of dedicated Atlantic Gold employees formed the Atlantic Gold Green Team. The goal of the Green Team is, "*to ensure ongoing continuous improvement and limitation of environmental risk through the use of best practice, fresh ideas and technological advances that are identified and implemented.*" In other words, this committee is finding ways for our environmentally responsible mine to be even more sustainable and green.

The Green Team will also be travelling to community events to to

support sustainability efforts. In August, the Atlantic Gold Green Team visited the 100th Halifax County Exhibition and assisted in keeping the grounds clean and reducing the impact of this important event on our environment.

Values and Engagement

Community

**Atlantic Gold**

OUR CORPORATE VALUES

WE ACT WITH HONESTY AND INTEGRITY**WE TREAT PEOPLE WITH RESPECT****WE VALUE WORKING TOGETHER****WE DELIVER TO PROMISE****WE STRIVE TO DO BETTER**

On July 19, 2019, St Barbara Ltd, a mining company based in Melbourne, Australia, completed a transaction to purchase Atlantic Gold Corporation.

St Barbara Ltd, with the acquisition of the Atlantic Gold operation, brings a commitment to a set of values. We strive to live these values as we work in your communities. These values form the basis for the [Community Relations Policy](#).

“St Barbara has built a reputation of being a responsible operator of long-term mining operations and is committed to building and maintaining positive relationships with all stakeholders, including government, First Nations and local communities”, says Bob Vassie, Managing Director and CEO of St Barbara Ltd.

Interested in joining the Sherbrooke or FMS CLC?

*Join the
conversation*

**COMMUNITY LIAISON COMMITTEES (CLC)
PROVIDE AN IMPORTANT CONNECTION
BETWEEN ATLANTIC GOLD AND THE
COMMUNITY. CLC'S:**

- PROVIDE FEEDBACK ON ISSUES TO ATLANTIC GOLD
- HELP US UNDERSTAND COMMUNITY ISSUES AND CONCERNS
- ACT AS A CONDUIT BETWEEN THE COMMUNITY AND ATLANTIC GOLD

If interested contact:

communityrelations@atlanticgoldcorporation.com

902-391-4653



Mine sites are complicated and contain many different elements. The elements of a mine are often referred to as “mine infrastructure”. In this article, the different elements of a mine site are explained to help those around our mine sites understand more about what may be installed. Each individual mine site will be different from the others. To learn more about each mine project, please visit our [website](#).

What might be included when we are talking about Mine Infrastructure?

Mine sites will include some or all the following pieces of infrastructure.

- *Materials storage (waste rock, till/overburden, low grade ore);*
- *Ore processing (crusher, processing facilities and laboratory);*
- *Site facilities (mine buildings, fuel storage, power distribution, water distribution);*
- *Tailings management facility and effluent treatment plant;*
- *Environmental infrastructure (water management);*
- *Surface and groundwater monitoring stations; and*
- *Community development.*

Infrastructure at site can be either permanent or temporary. Temporary infrastructure will be removed when the mine closes. Permanent infrastructure will remain in place after closure.

Ore extraction

Atlantic Gold extracts gold using an “open pit” to access gold-bearing ore. In general, the open pit is designed to maximize ore extraction and minimize waste removal. Pit wall slopes (the walls of the open pit) are designed for safety and stability. Access to active mine areas is via a ramp system. Within the active mining area, rock is drilled and blasted on 5m to 10m bench heights. Ore and waste are loaded and transported out of the pit using specialized mining equipment (typically excavators, loaders, haul trucks).

The pit is part of the permanent infrastructure that will remain in place after completion of mining operations. Upon closure the pit will be allowed to fill in with water, creating a lake. The pit edges will be re-sloped and re-vegetated, where possible, to improve safety and reduce erosion.

Mine site haul roads

There are 3 types of roads commonly located at site:

- *Access road;*
- *Mine haul roads; and*
- *Light vehicle access.*

The **access road**, as it states, provides access for all personnel and materials entering and leaving the site. This road is generally unrestricted to traffic but at some point will terminate at a security check point.

The largest roads on site are the **mine haul roads** and provide transportation links from the “open pit” to the various material stockpiles and the processing plant. These roads are designed for larger mining equipment. Light vehicle access (cars and trucks) are not permitted on mine haul roads except to authorized vehicles for safety reasons.

Various minor roads will be located around the site to provide **light vehicle access** to site facilities and environmental monitoring locations. Unless required, all roads are considered temporary infrastructure and will be reclaimed upon closure. This will consist of excavating and grading road surfaces, spreading of topsoil, and re-vegetation.

Materials storage

Ore extraction at Atlantic Gold’s operations involves the removal of both ore and waste from an open pit. Waste rock materials are hauled and stored in stockpiles based on material types. Common stockpiles include topsoil, over burden and waste rock. The waste rock stockpile (WRSF) is generally one of the larger infrastructure items and are designed with specialized engineering input to ensure stability and safety during operation and closure.

Given the size of the waste rock stockpile, it may be visible from the surrounding environment. It’s size also means that it will remain after a mine closes. For that reason, these large structures are designed, sloped, and revegetated to blend in to the surrounding topography once a mine ceases operation. Special attention is paid to reduce the visual impact and ensure long term stability. In addition, where possible, stockpiles are progressively reclaimed. Progressive reclamation means that while the mine is still in operation, areas and infrastructure that can be reclaimed will be, instead of waiting until the mine closes to begin reclamation. These progressively reclaimed areas of the mine also provide a preview to regulators, community, and First Nations of what the mine will look like after closure and reclamation.

material extracted from the open pit is generally hauled to the processing plant for processing. However, in order to improve the grade processed, lower grade material is routinely stockpiled for later processing in the mine's life. These temporary stockpiles are generally located close to the processing plant and will be reclaimed and processed throughout operation.

Ore processing area

The largest buildings on site are associated with ore processing and the various stages that are involved, including:

- *Crushing and grinding;*
- *Gold recovery; and*
- *Cyanide destruction and tailings disposal.*

The first stage of the ore processing consists of crushing. Ore is crushed and reduced in size through a three-stage process with each stage progressively reducing the particle size. The crushing circuit consists of a primary crusher, secondary crusher and tertiary crusher connected via a series of conveyor belts and screen decks to ensure correct material sizing at each stage. The final product is transferred via conveyor to a fine ore stockpile where it is stored prior to grinding.

After crushing and grinding, the gold ore enters the gold recovery circuit which includes gravity concentration and leaching. Gravity concentration devices create movement between the gold and host rock particles to allow the separation of the heavier gold particles from the lighter waste material.

Finer gold particles which are not recovered through gravity proceed through the plant and into the leach circuit. The method used at the Touquoy mine is the Carbon-In-Leach (CIL) process. In this process, the finely ground ore is leached using cyanide in a series of agitated tanks. For the Beaver Dam, Fifteen Mile Stream and Cochrane Hill mines, no cyanide will be used.

In the case of Fifteen Mile Stream and Cochrane Hill operations, leaching will be replaced by a flotation process to produce a gold concentrate that will be transported to the Touquoy mine site for leaching and final processing.

The design and installation of the processing facility requires many thousands of hours of detailed engineering and test work to complete. All infrastructure associated with ore processing will be removed from site at closure and the remaining disturbed areas reclaimed.

Site facilities

In order to support a mine's operation, a number of smaller buildings are required. These may include some or all of the following:

- *Gatehouse* – a guardhouse at the site access road where security staff can control entry to the mine and process plant areas;
- *Administration office* – includes offices for mine staff, training rooms and IT infrastructure;
- *Mining office and change rooms* – accommodates the mining workforce and includes offices, lunchroom and wet and dry areas complete with wash facilities and personal storage;
- *Truck workshop, warehouse and wash facility* – generally one of the larger buildings on site, this facility is generally positioned adjacent to the mine office and is separated into two sections: one, the truck shop and the other, the warehouse. The truck shop for all maintenance and repairs on mobile mine equipment and often is subdivided into a number of maintenance bays. Other maintenance activities can be performed outside the building on a hardstand area.
- *Plant Workshop* - the Plant Maintenance building is generally located adjacent the process/concentrator building and will house maintenance personnel undertaking maintenance activities in support of ore processing;
- *Fuel storage;*
- *Power supply;*

equipment for the site sample analyses, including mining, metallurgical and environmental requirements.

These site facilities are temporary and will be dismantled and removed from the site upon completion of mining activities. The areas where they were located will be reclaimed.

Tailings Management Facility

Tailings are the by-products that remain following the extraction and recovery of gold through the milling/concentration process. Tailings generally consist of a mixture of finely ground rock particles, water, and processing reagents in low concentrations. The management of tailings is a key component in the design and operation of mining projects. The objective of tailings management is to confine the mine tailings for safe, long-term disposal.

Tailings are stored in engineered structures called tailings management facilities (TMF), which are created using dams, berms, and natural topographical features (valleys, depressions and hillsides) of the project area to aid with containment.

TMFs are permanent structures. Tailings management facilities are often a key element in the rigorous environmental assessment and regulatory processes that federal, provincial and territorial governments employ to ensure that the environmental effects of proposed mine projects are identified. Key requirements of most TMFs are a reclaim pump station that allows recycling of process water and an effluent treatment plant that treats surplus process water to strict environmental standards prior to discharge back to the natural environment.

Mine site infrastructure varies from project to project. However, the above summary will assist those trying to understand what may be on any of the Atlantic Gold's mine sites.

Impact Assessment Agency of Canada

replaces the Canadian Environment Assessment Agency

In August 2019, three new legislative Acts came into force at the federal level: the [Impact Assessment Act](#), the [Canadian Energy Regulator Act](#) and the [Canadian Navigable Water Act](#). The Impact Assessment Act repeals the Canadian Environment Assessment Act of 2012 and replaces it with the Impact Assessment Act. A new agency called the Impact Assessment Agency of Canada was created to administer the act.

Atlantic Gold's proposed projects will be evaluated under the Canadian Environmental Assessment Act of 2012. Because Atlantic Gold began under CEAA 2012, it will continue to adhere to the process under which it began.

The Canadian Environmental Assessment Agency (CEAA) website has been replaced with the [Impact Assessment Agency of Canada \(IAAC\)](#) site and includes a project [registry](#) that contains information related to all of Atlantic Gold project's Environmental Assessments.

Find out more about the impact assessment process under the new Impact Assessment Act by clicking [here](#). You can also learn about how members of [the public can participate](#) in the review process.

**INFORMATION ABOUT ATLANTIC
GOLD'S MINING PROJECTS**

IN EACH NEWSLETTER, WE
PROVIDE UPDATES ON
ATLANTIC GOLD'S ONGOING
PROJECTS.

Touquoy

Production at the Touquoy mine continues to be steady and on target with the estimated annual production of 95,000 to 105,000 ounces provided as guidance in summer 2019. The site has also hired a new General Manager, Laird Brownlie. Originally from Scotland, Laird has built a career in mining management that brings operations and staff to the next level of achievement and sustainability. He brings a variety of working experience and best practices from across Canada.

Cochrane Hill

Atlantic Gold continues to study and refine its plans for Cochrane Hill. Once all the studies are complete, the public will be invited to a public meeting to review results. The Sherbrooke Office is open two days per week for any questions or comments from the public. Please drop in and see us to discuss the project.

Beaver Dam

The Environmental Impact Statement continues to be reviewed by the federal regulators. Atlantic Gold and its consulting team are in the process of answering the second round of Information Requests. Once the federal and provincial regulators have no further questions, a final decision will be made on the project.

Fifteen Mile Stream

The Environmental Assessment for Fifteen Mile Stream was submitted in early October 2019. The Canadian Environmental Assessment Agency (CEAA) (now called the [Impact Assessment Agency of Canada](#)) will post the EIS to its website and open a public consultation period where the public and First Nations can provide comments. Atlantic Gold will issue a special bulletin to announce the commencement of the public consultation period.

SHERBROOKE FALL OFFICE HOURS

Come See us

8133 Hwy 7 in Sherbrooke
(In the old "fire hall" across from Clover
Farm Supermarket)

Office House: Tuesdays 10-4.30 and 6-8 PM; Wednesdays 8.30-2.30

[St Barbara Website](#) [Email](#)

Copyright © 2019 St Barbara Ltd. All rights reserved.

Our email address is:

communityrelations@atlanticgoldcorporation.com

Community Relations Phone Line: 902-391-4653

Want to change how you receive these emails?
You can [update your preferences](#) or [unsubscribe from this list](#).



April Special Notice

Covid-19 and Atlantic Gold

To community members along Nova Scotia's Eastern Shore,

On behalf of the management team at Atlantic Gold, I want to update you on the measures we have already taken to address current and potential impacts of the COVID-19 virus and the proactive plans we have developed to mitigate impacts moving forward.

Our entire team is committed to meeting our responsibilities to our staff, their safety, our shared environment, and Atlantic Gold's business. Our priority is to safeguard the continued health and stability of our staff while ensuring our operations remain safe and environmentally responsible. To that end, here are specific actions we have taken to meet the above goals:

Workforce Update

- At this time, the Moose River Mine is still in production. Staff and management are enforcing all government regulated COVID-19 related provincial directives including social distancing and restricting work-related gatherings to five people or less. Our management team is keeping an open dialogue to monitor the health and safety of all of those working on-site.
- As of Wednesday, March 11, all Atlantic Gold staff that are able to work remotely have been doing so.
- Atlantic Gold's Environment Team remains positioned on-site, and we continue to ensure our company meets or exceeds every environmental regulation. The Environment Team's role is to monitor conditions outdoors and they are keeping safe distances for the small amount of time they are working inside.
- To support social distancing, we are providing provincial regulators with a weekly update on environmental conditions to reduce requirements for non-Atlantic Gold employees to visit the mine site.
- While a small staff complement continues to work at the Moose River Mine, communication was sent out to all employees highlighting how the company intends to address staff pay:
 - All hourly employees of Atlantic Gold will be paid at their normal rate during their time off due to the COVID-19 virus. This includes employees who must self-isolate or are caring for dependents who are afflicted with COVID-19.
 - Employees who have lost childcare and are unable to work as a result will be paid up to 30-days or until they can find suitable childcare.
 - Hourly and salaried employees working from home will be paid at their normal rate.
 - If a wider shutdown is ordered by the Nova Scotia government, Atlantic Gold will pay up to 30-days wages to any employee unable to work on-site or from home.
- The above measures will be reviewed at the end of April should the COVID-19 crisis persist.

Safety Update

- Staff from Atlantic Gold's Safety Team are on-site at our Moose River Mine to ensure Atlantic Gold's commitment to safety remains a key focus.
- Atlantic Gold's Human Resources and Safety departments are collaborating to monitor the condition of staff working on-site and any who have placed themselves in quarantine.

Environment Update

- A limited number of staff from Atlantic Gold's Environment Team remain on-site to ensure that our operations continue to meet all requirements of provincial and federal regulators.
- The Environment Team is providing additional updates to regulators to aid with the Nova Scotia government's requirement for their staff to not travel for meetings. Those updates will continue to be provided until the provincial government's own guidance to its employees changes.

Atlantic Gold has developed detailed plans to address the potential of the COVID-19 virus impacting a significant portion of our staff or if the provincial/federal governments mandate a shutdown of our operations.

- Plans for a potential short-term or long-term halt to production are finalized, and in that event, we are confident our mine will retain operational readiness for the point when any restrictions on provincial mining operations are lifted.
- The Atlantic Gold Management Team is unified and focused on addressing this issue, adapting plans, and keeping our staff, our safety, and our environment as our main priorities.

Community Support

- As a part of the community in the areas where we operate, Atlantic Gold wants to ensure we are doing all we can to aid those in need during this time.
- Atlantic Gold has connected with the Braeside Home for Seniors in Middle Musquodoboit and committed to an investment that has provided their residents with the installation of improved internet connection and the electronic devices required for residents to communicate with their families during a time of isolation and social distancing. Our company has also committed to providing funds for residents and staff to have extras (including candies, potato chips and soft drinks) that would normally come from their families but will not be possible during this time.
- Our company has also answered the call of the Province of Nova Scotia to donate items that are essential for frontline health care workers and first responders. As such, 500 protective masks were donated to the Nova Scotia Health Authority and we continue to assess additional donations that can be made.
- In addition, Atlantic Gold has committed to working with local food banks and Meals on Wheels programs to support members of the communities around our current or proposed operations who are in need.

By supporting our staff and their families, the communities around our operations, and each other, we can and will overcome this unprecedented situation.

If you have any questions or concerns about Atlantic Gold's response to the COVID-19 virus, please contact communityrelations@atlanticgold.ca.

Sincerely,

Maryse Belanger
President Americas, St Barbara Ltd

Notice of Temporary Closure of Sherbrooke Office

Dear Sherbrooke Community Members:

In line with direction from the Provincial Government and the Chief Medical Officer, Atlantic Gold has closed their Sherbrooke Office for the foreseeable future. Once social distancing and social gathering restrictions have ended, the office will return to business as usual and we will resume our normal operating days of Tuesdays 10:00 am to 4:00 pm and Fridays 10:00 am to 3:30 pm.

At this time, Atlantic Gold would like to offer its support and assistance for community groups and other organizations in the community who may need help to get through the next few months. While the Sherbrooke Office is

services like deliveries in the community to vulnerable people.

Please contact us on the Community Relations cell number (902)-391-4653 or by email: communityrelations@atlanticgold.ca

Stay well.

The Atlantic Gold Team

 [Atlantic Gold Corporation Website](#)  [LinkedIn](#)  [Twitter](#)

Copyright © 2020 Atlantic Gold Corporation. All rights reserved.

Our email address is:
communityrelations@atlanticgold.ca

Want to change how you receive these emails?
You can [update your preferences](#) or [unsubscribe from this list](#).



Fall 2020 Bulletin

Welcome to the Fall 2020 Edition of the Atlantic Gold Community Newsletter. This edition of our company newsletter focuses on our company response to the COVID-19 pandemic in the communities around where we operate and hope to operate, a heartwarming piece of history showing one man's family connection to the Moose River Gold Mine and information on Atlantic Gold's hiring practices for those interested in working for our company.

I hope you enjoy this edition of Atlantic Gold's company newsletter and if you have questions about our current or proposed projects, please reach out to our company through our Community Relations [email](#).

Respectfully,

Laird Brownlie
General Manager, St. Barbara Atlantic Operations



Atlantic Gold in the Community

Atlantic Gold is a proud supporter of community activities and groups. Below are some of the important events we've recently partnered to support.

**BRINGING FAMILIES
TOGETHER**

Community



In these unusual times of physical distancing in our communities, the health and wellbeing of the people at the frontlines of caring for our most vulnerable community members is never far from our minds. Atlantic Gold wanted to show its appreciation to health care workers at Musquodoboit

For Braeside, Atlantic Gold donated a barbecue to be used on site as the weather improves. We have also purchased iPads to support residents in being physically distant but not socially isolated from their families at this time. Families and residents expressed tearful joy at being connected and able to see each other even though they are unable to visit physically at this time.

Staff have reported that non-verbal residents have been able to engage with family members and connect this way – even reaching out to touch the screens in recognition. “The response by families and residents has been heartwarming”, according to staff. The ability to visit with children and grandchildren has been a real mood booster and provided much needed support to families in these stressful times.

**This is a summary of an original article authored by Denise Wyndchen, writing for the Nova Scotia Health Authority. Picture credit: Denise Wyndchen*

Joining The Talent Pool: We Can Help

Employment



Recruitment

Atlantic Gold is pleased to present a new recruiting tool called Live Hire. This is an online software tool that allows us to post open jobs on the St Barbara Ltd website and receive applications for employment from job seekers. It allows job-seekers to create a profile and online resume to express their interest in future opportunities, as well as apply for current employment opportunities. Visit atlanticgold.ca to view current employment opportunities in Canada. We encourage anyone interested in current or future opportunities to join our Talent Community.

We are offering offer one-on-one, online assistance for individuals to sign up online. Once offices fully reopen we will have facilities available to sign up individuals in our communities. Atlantic Gold is also able to offer online workshops to employment organizations across Nova Scotia in an on-demand basis. Organizations interested in online workshops should contact CommunityRelations@atlanticgold.ca.

Apprenticeships

We have also launched an active apprenticeship program for the following trades: Industrial Electrician, Instrumentation Technician, Heavy Equipment Technician and Millwright. We currently employ one successful graduate of the program and we look forward to welcoming more.

Leadership Development

In order to continue developing the skills of our employees, Atlantic Gold is conducting three different leadership development programs targeting different levels of supervisors. The Frontline Leader program helps those staff who supervise the team members who work at the front end of production. The Superintendent program helps those leaders who manage Supervisors and finally the manager program helps to focus more senior leaders on business needs and people.

Working for Atlantic Gold is an excellent opportunity to further develop skills and obtain training. Please visit our website for more information on employment opportunities AtlanticGold.ca.

Bill Cameron of Wellington, Ontario contacted Atlantic Gold with some memorabilia collected while recording his family's early association with the Moose River Gold Mine and gold mining in general in Nova Scotia. Bill's family has been heavily involved in Nova Scotia's mining history, but especially at Moose River, near where Atlantic Gold's mine currently operates.



Mr. Cameron's grandfather and uncle hold up a gold bar around the early 20th century. (Picture courtesy of Bill Cameron)



Mr. Cameron prospecting at a cousin's mining lease at Moose River in 1979 (picture courtesy of Bill Cameron).

Mr. Cameron's father, Arnold, was born in 1913 and lived in the Moose River area with his parents and eight siblings for about six or seven years in the 1930's. While Arnold, his father and brothers, Laurie and Lee, worked in and around the mines, his grandmother and aunts ran the local hotel and general store.

Mr. Cameron recalled his father telling him that his grandfather's mining company was supplied with a Model-T Ford by an investor in Stellarton, which all the miners, children included, would drive from New Glasgow to Moose River. Occasionally, the car's rear wheel would be removed and a pulley attached. With the car running, Arnold's job as a boy was to operate the clutch to power the pulley that brought ore out of the mine. There was a large stamp mill onsite which would crush the ore, and a sluice powered by a waterwheel.

A letter from Mr. Cameron's uncle to his father in 1967 describes family members and their prospecting at various locations in Nova Scotia over the years, and fortunes made and missed. Mr. Cameron said the letter described the early days of prospecting, literally crawling over the forest floor in places like Caribou and Moose River looking for ore laying at the surface.

Even after selling off the mine, Mr. Cameron's grandfather's knowledge of the mine shafts contributed to the rescue of three men in the infamous Moose River mine collapse of 1936. The disaster trapped three men, who were rescued, and occurred only months after the mine changed

Mr. Camerons' family retains a wealth of written records and photographs of his family's rich mining history and we thank him for sharing it with us at Atlantic Gold.

Atlantic Gold's Projects

Planning, developing, building, operating and reclaiming a mine is a complicated and technical process. In this section, we provide information about the stages of our projects.

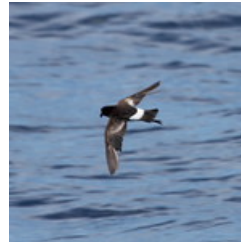
Wildlife Management Strategy - Storm Petrels

Environment

On October 22nd, 2019 the Atlantic Gold Environment Team responded to an email about a bird that had blown into the mill area of the Moose River Mine during a storm. The bird was found uninjured on the ground outside of one of the mill buildings. It was identified as a Storm Petrel, a seabird that is only found inland during periods of high wind. The Environment Team has only observed this seabird on-site on one other occasion.

Atlantic Gold has a Wildlife Management Plan that outlines procedures for dealing with distressed or orphaned animals. Our staff knew that Storm Petrels have weak legs and cannot take flight from solid ground. Since it could not take flight on it's own, the Environment Team placed the stranded bird carefully inside a box filled with padding. We contacted Hope for Wildlife and the bird was dropped off to them, alive and well so that it could be rehabilitated and released .

Due to the quick and professional action of the Mill team, the bird was saved.



Did you know?

- Storm Petrels are the smallest seabird in the world?
- Storm Petrels spend their life off shore, living on small islands.
- Storm Petrels nest in rock crevices or in underground burrows which they dig themselves.
- Atlantic Gold has a Wildlife Management Plan that outlines the procedures for dealing with animals in distress.

Regional Economic Impact Study

Benefits

Understanding how a mining project impacts the local community and economy is undertaken by completing socio-economic studies. These studies can look at a range of factors including the number of jobs created, employee training and development, corporate giving, impacts on local business, impacts on demographics, and potential revenues to government through taxes and royalties.

Atlantic Gold has engaged KPMG, an international firm that specializes in a variety of services including socio-economic assessments, to prepare a series of economic impact studies. KPMG is in the final stages of preparing socio-economic studies for Touquoy, Beaver Dam, Cochrane Hill and Fifteen Mile Stream. These studies will look primarily at the number of jobs that are expected to be created, the amount of spending at the provincial and national level during construction and operation, and the total taxes and royalties paid at the municipal, provincial and federal level.

...economic impacts have been of particular concern for the area in and around the proposed Cochrane Hill Gold Mine, near Sherbrooke. In response to the concerns from the public, Atlantic Gold commissioned an additional study to fully understand the impacts on the region around this proposed mine site.

Here are a few preliminary conclusions from the Regional Economic Impact Study.

Cochrane Hill

REGIONAL ECONOMIC IMPACTS

EMPLOYMENT



- 202 jobs created in the region during construction
- 272 jobs created in the region during operations

\$182,000



Increase in municipal revenues per year

\$68,068



Average salary for Cochrane Hill mine Project

COMMUNITY INVESTMENTS

\$35,000 in donations in 2018-19

- ★ DONATIONS
- ★ PARTNERSHIPS
- ★ IN-KIND SERVICES



SPENDING IN REGION



\$116.4 Million

over 9 Years



Atlantic Gold

INFORMATION ABOUT ATLANTIC GOLD'S MINING PROJECTS

IN EACH NEWSLETTER, WE PROVIDE UPDATES ON ATLANTIC GOLD'S ONGOING PROJECTS.

Moose River Mine

The Moose River Gold Mine continues to meet production targets in a safe and environmentally responsible manner. The mine recently reached the milestone of employing over 300 staff members on Nova Scotia's Eastern Shore.

Under the guidance of General Manager, Laird Brownlie, the Moose River Mine has implemented rigorous safety protocols that have allowed the mine to continue to operate through the COVID-19 pandemic.

Beaver Dam

Atlantic Gold will be reaching out to community members in the coming months to update them on the Beaver Dam Project.

The Environmental Impact Assessment continues through the review period by regulators, which will issue a decision at some point before the 365 day review period expires.

Fifteen Mile Stream

The submission of the Environmental Impact Statement will occur in 2020. Once it is reviewed for conformance with the Project Guidelines, the EIS will be posted on the Impact Assessment Agency of Canada's (IAAC) website for review and comment by the public. Atlantic Gold will issue a special bulletin when the EIS is open for public comment.

Cochrane Hill

Given the COVID-19 crisis, the office in Sherbrooke closed in March but reopened in July, with increased health and safety protocols.

Over the spring and summer, Atlantic Gold was active in the community supporting local community organizations as they responded to needs caused by COVID-19. We have been proud to assist where we can.

Atlantic Gold continues to prepare for a submission to the Impact Assessment Agency of Canada. More information will be available on this in the coming months.

 [Atlantic Gold Website](#)

Copyright © 2020 Atlantic Gold
All rights reserved.

Our email address is:
communityrelations@atlanticgold.ca

Want to change how you receive these emails?
You can [update your preferences](#) or [unsubscribe from this list](#).