

APPENDIX E

Marine Mammals Observation Data

Table of Contents

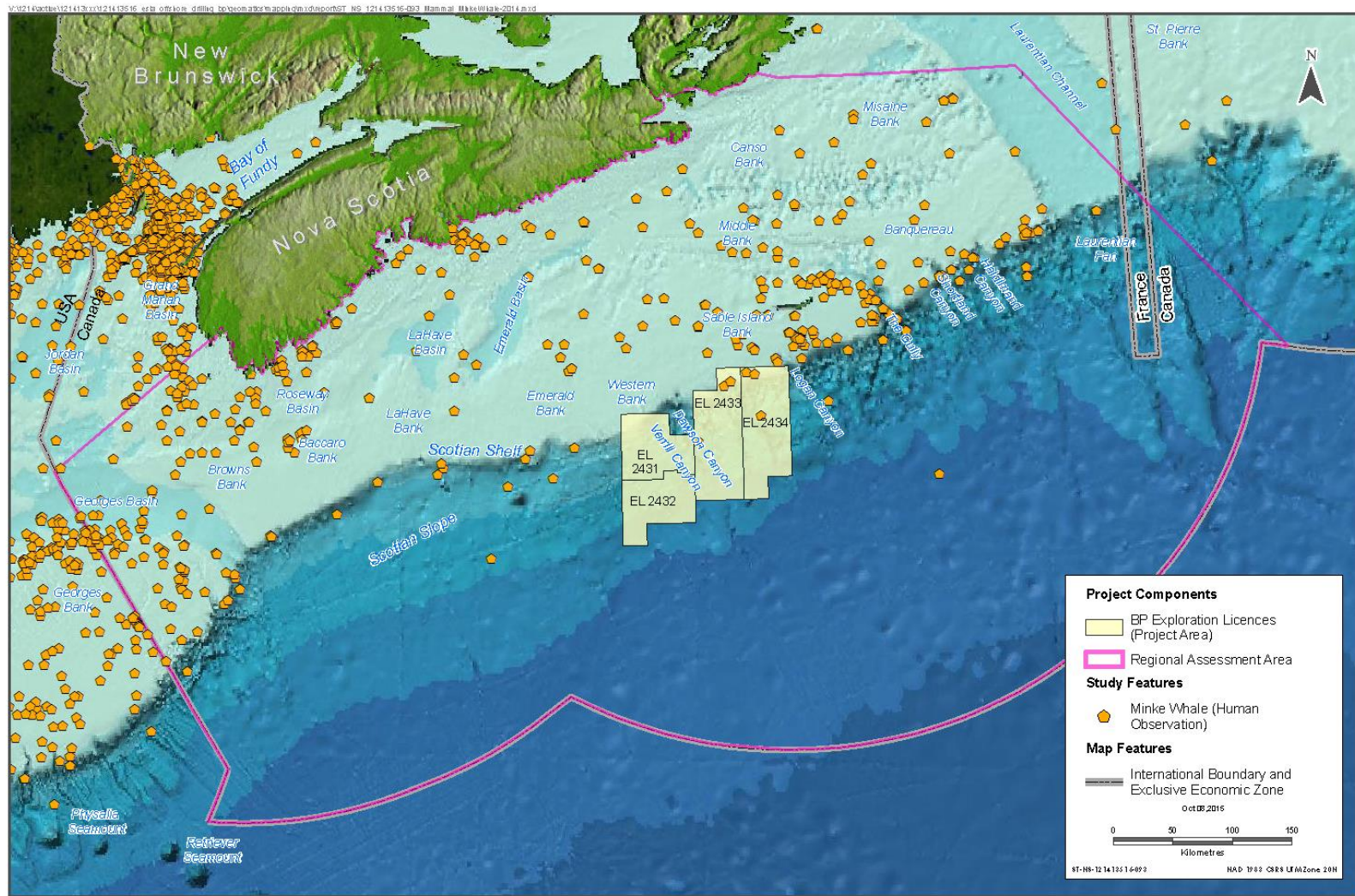
LIST OF FIGURES

Figure 1	Minke Whale Observation Data (1964-2013).....	1
Figure 2	Sei Whale Observation Date (1966-2013)	2
Figure 3	Atlantic White-Sided Dolphin Observation Data (1967-2013)	3
Figure 4	Bottlenose Dolphin Observation Data (1968-2013)	4
Figure 5	Long-Finned Pilot Whale Observation Data (1967 to 2013).....	5
Figure 6	Short-Beaked Common Dolphin Observation Data (1967-2013)	6
Figure 7	Sperm Whale Observation Data (1919-2013)	7
Figure 8	Striped Dolphin Observation Data (1967-2013).....	8
Figure 9	White-beaked Dolphin Observation Data (1968-2013).....	9
Figure 10	Blue Whale Observation Data (1966 to 2012)	10
Figure 11	Fin Whale Observation Data (1964-2013)	11
Figure 12	Humpback Whale Observation Data (1966-2013)	12
Figure 13	Right Whale Observation Data (1964-2013)	13
Figure 14	Harbour Porpoise Observation Data (1966-2013)	14
Figure 15	Killer Whale Observation Data (1964-2012)	15
Figure 16	Northern Bottlenose Whale Observation Data (1964-2013)	16
Figure 17	Sowerby's Beaked Whale Observation Data (1998-2004)	17

SCOTIAN BASIN EXPLORATION DRILLING PROJECT – ENVIRONMENTAL IMPACT STATEMENT

Appendix E – Marine Mammals Observation Data

Figure 1 Minke Whale Observation Data (1964-2013)

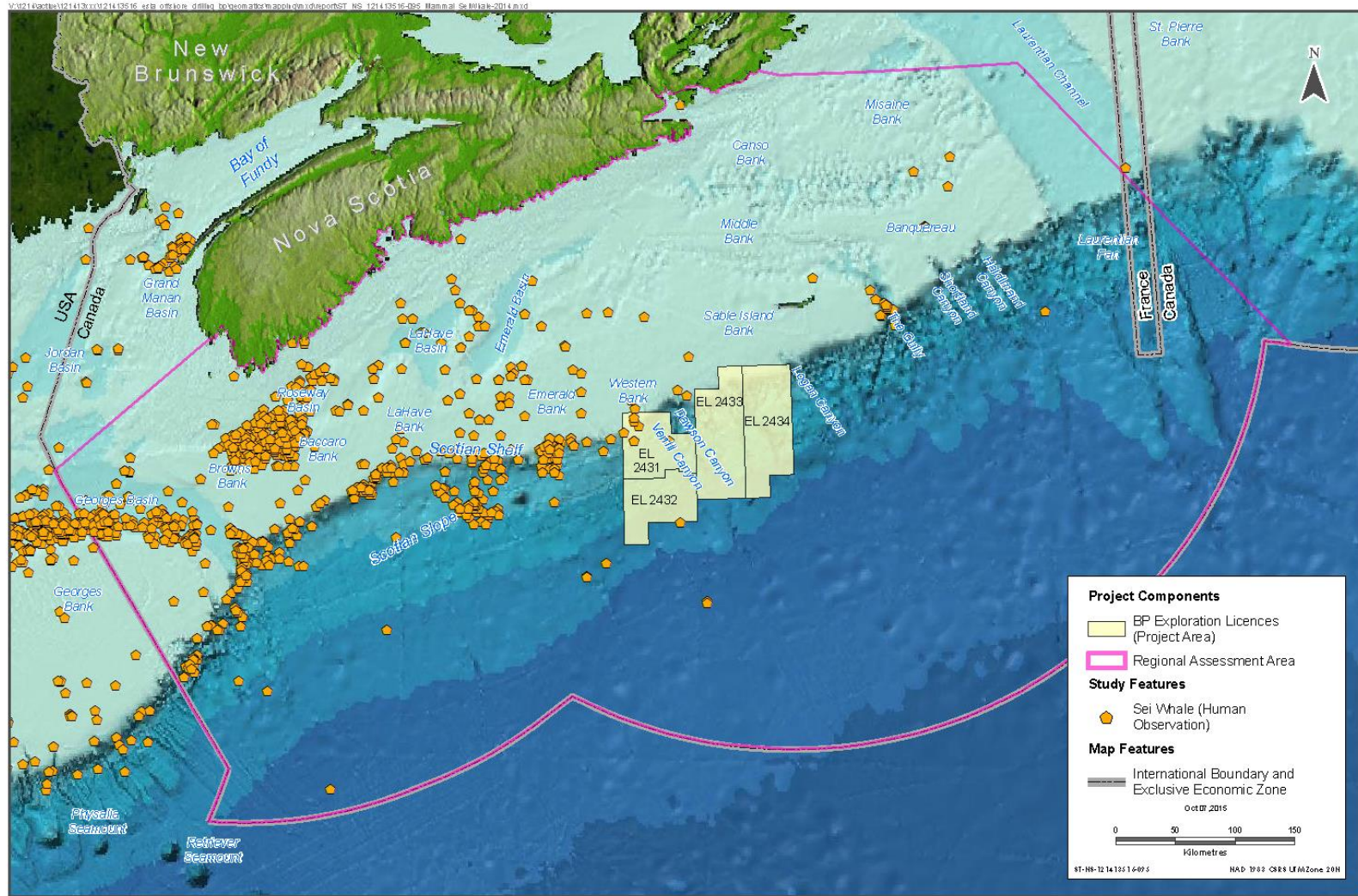


Sources: North Atlantic Fisheries Organization; Canada - Nova Scotia Offshore Petroleum Board; Natural Resources Canada; GEBCO global bathymetry grid; Ocean Biogeographic Information System; Intergovernmental Oceanographic Commission of UNESCO. Disclaimer: This map is for illustrative purposes to support this Stantec project; questions can be directed to the issuing agency.

SCOTIAN BASIN EXPLORATION DRILLING PROJECT – ENVIRONMENTAL IMPACT STATEMENT

Appendix E – Marine Mammals Observation Data

Figure 2 Sei Whale Observation Date (1966-2013)



Source: North Atlantic Fisheries Organization; Canada - Nova Scotia Offshore Petroleum Board; Natural Resources Canada; GEBCO global bathymetry grid; Ocean Geographic; Informal System; Arrangement / Document / Commission of UNESCO

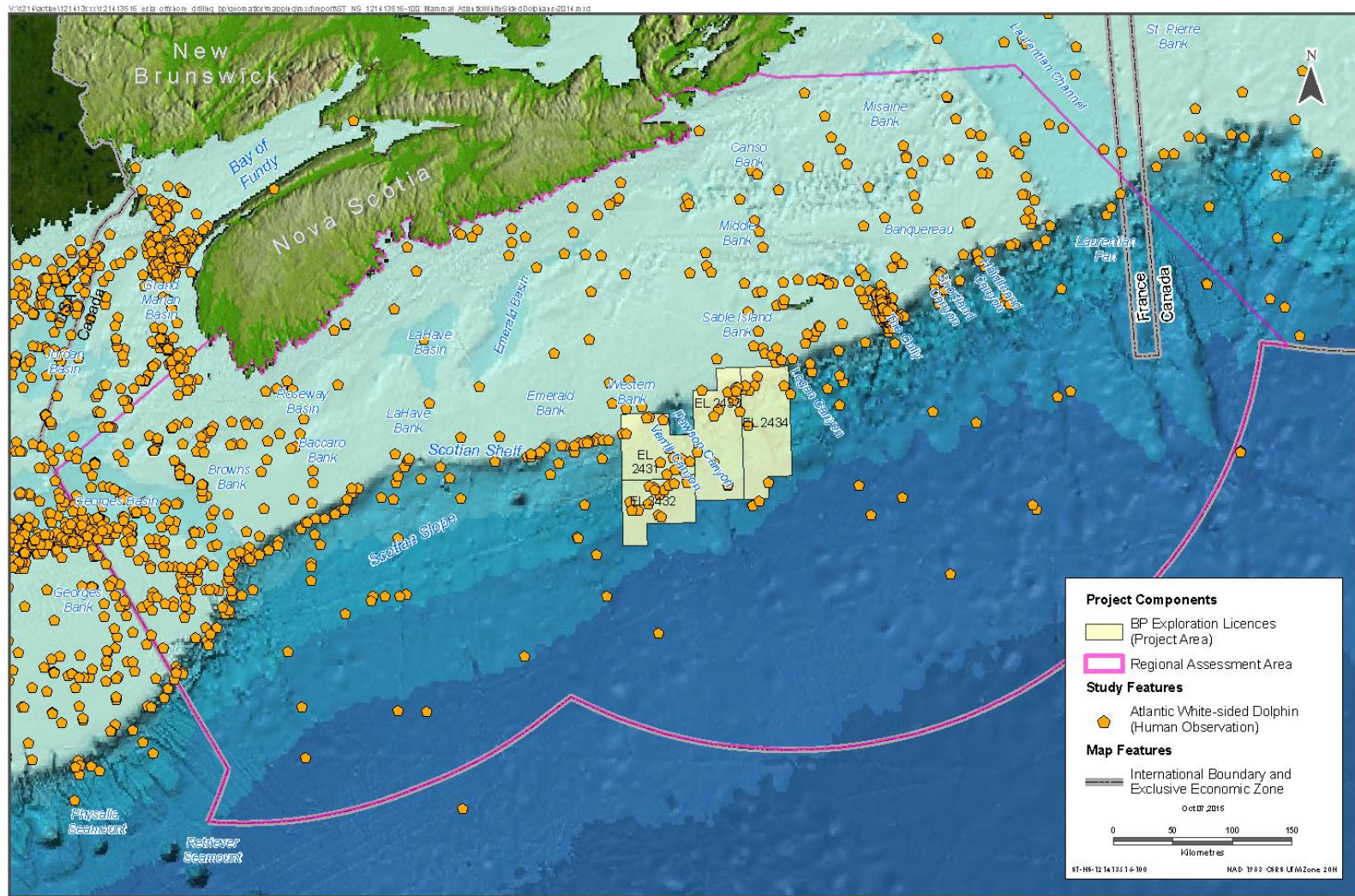
Disclaimer: This map is for illustrative purposes to support this Statement project; questions can be directed to the issuing agency.



SCOTIAN BASIN EXPLORATION DRILLING PROJECT – ENVIRONMENTAL IMPACT STATEMENT

Appendix E – Marine Mammals Observation Data

Figure 3 Atlantic White-Sided Dolphin Observation Data (1967-2013)



Source: North Atlantic Fisheries Organization, Canada - Nova Scotia Offshore Petroleum Board, Natural Resources Canada, GEBCO global bathymetry grid, Ocean Geographic, Informa Fish System, Intergovernmental Oceanographic Commission of UNESCO

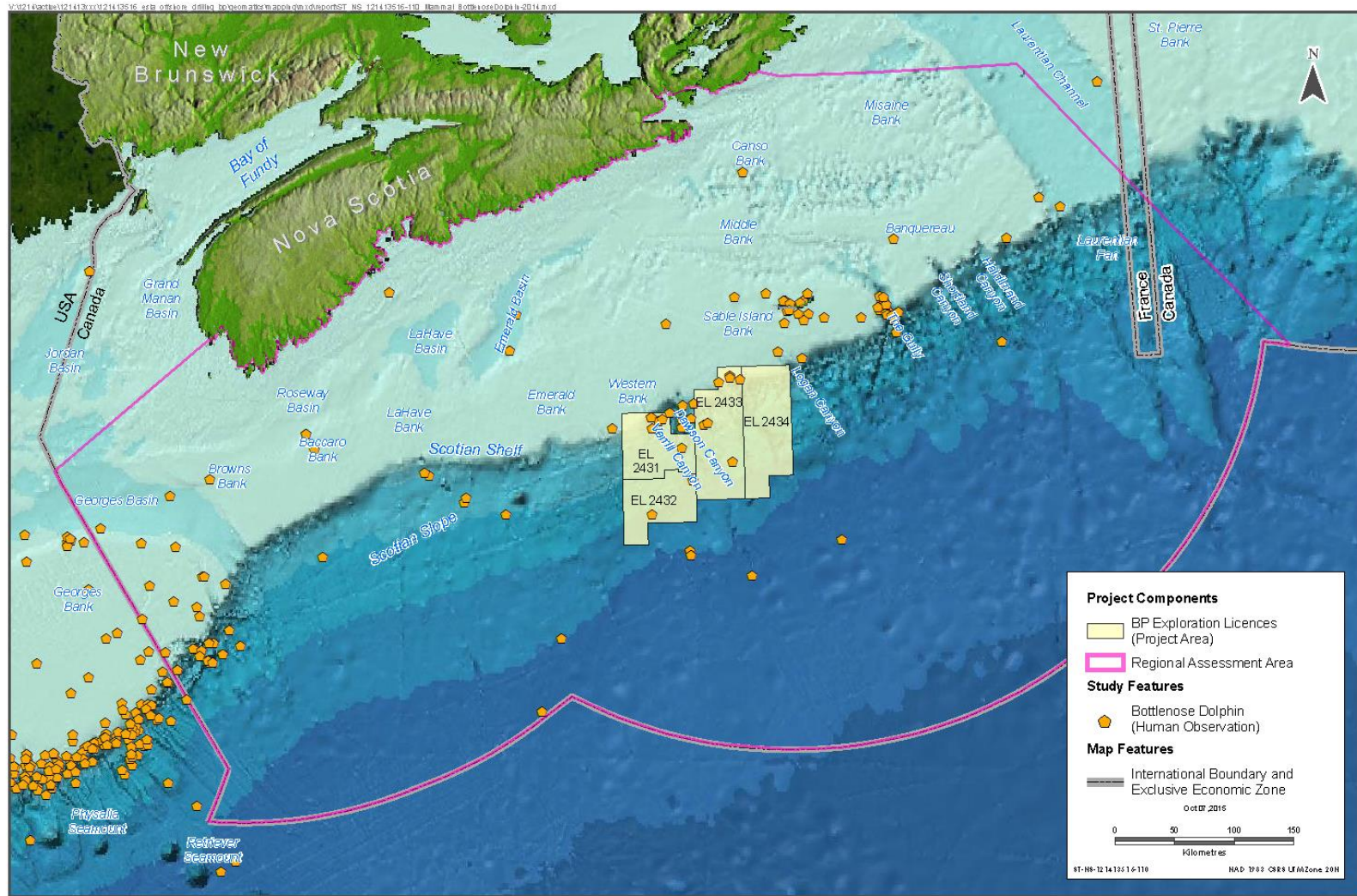
Disclaimer: This map is for illustrative purposes to support this Stantec project; questions can be directed to the issuing agency.



SCOTIAN BASIN EXPLORATION DRILLING PROJECT – ENVIRONMENTAL IMPACT STATEMENT

Appendix E – Marine Mammals Observation Data

Figure 4 Bottlenose Dolphin Observation Data (1968-2013)



Source: North Atlantic Fisheries Organization, Canada-Nova Scotia Offshore Petroleum Board, Natural Resources Canada, GEBCO global bathymetry grid, Ocean Geographic, Informa 3D System, Arrangement 1/02e noige p/b, Commission of UNESCO

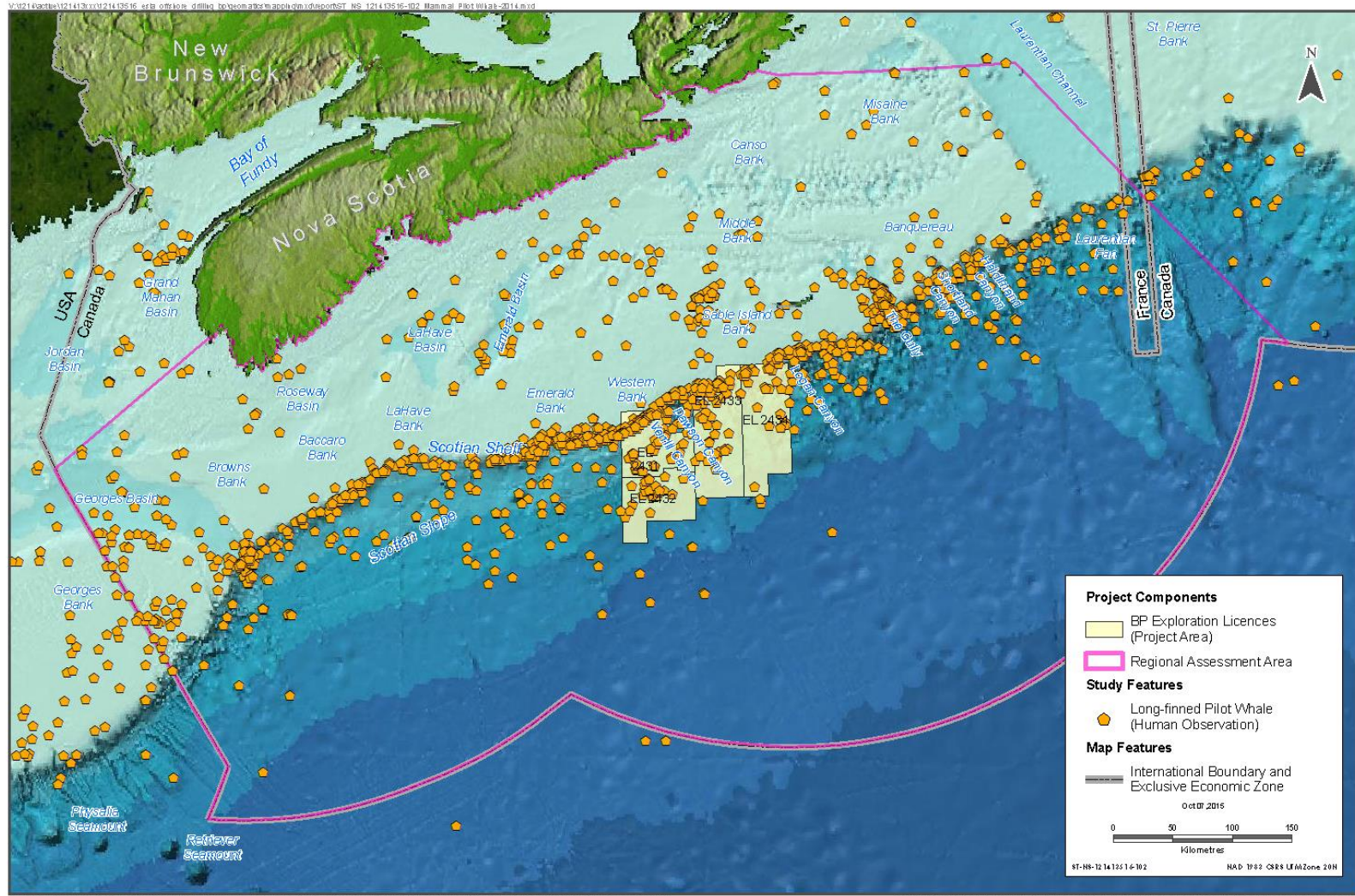
Disclaimer: This map is for illustrative purposes to support this Statement project; questions can be directed to the issuing agency.



SCOTIAN BASIN EXPLORATION DRILLING PROJECT – ENVIRONMENTAL IMPACT STATEMENT

Appendix E – Marine Mammals Observation Data

Figure 5 Long-Finned Pilot Whale Observation Data (1967 to 2013)



Source: North Atlantic Fisheries Organization, Canada-Nova Scotia Offshore Petroleum Board, Natural Resources Canada, GEBCO global bathymetry grid, Ocean Biogeographic Information System, Intergovernmental Oceanographic Commission of UNESCO

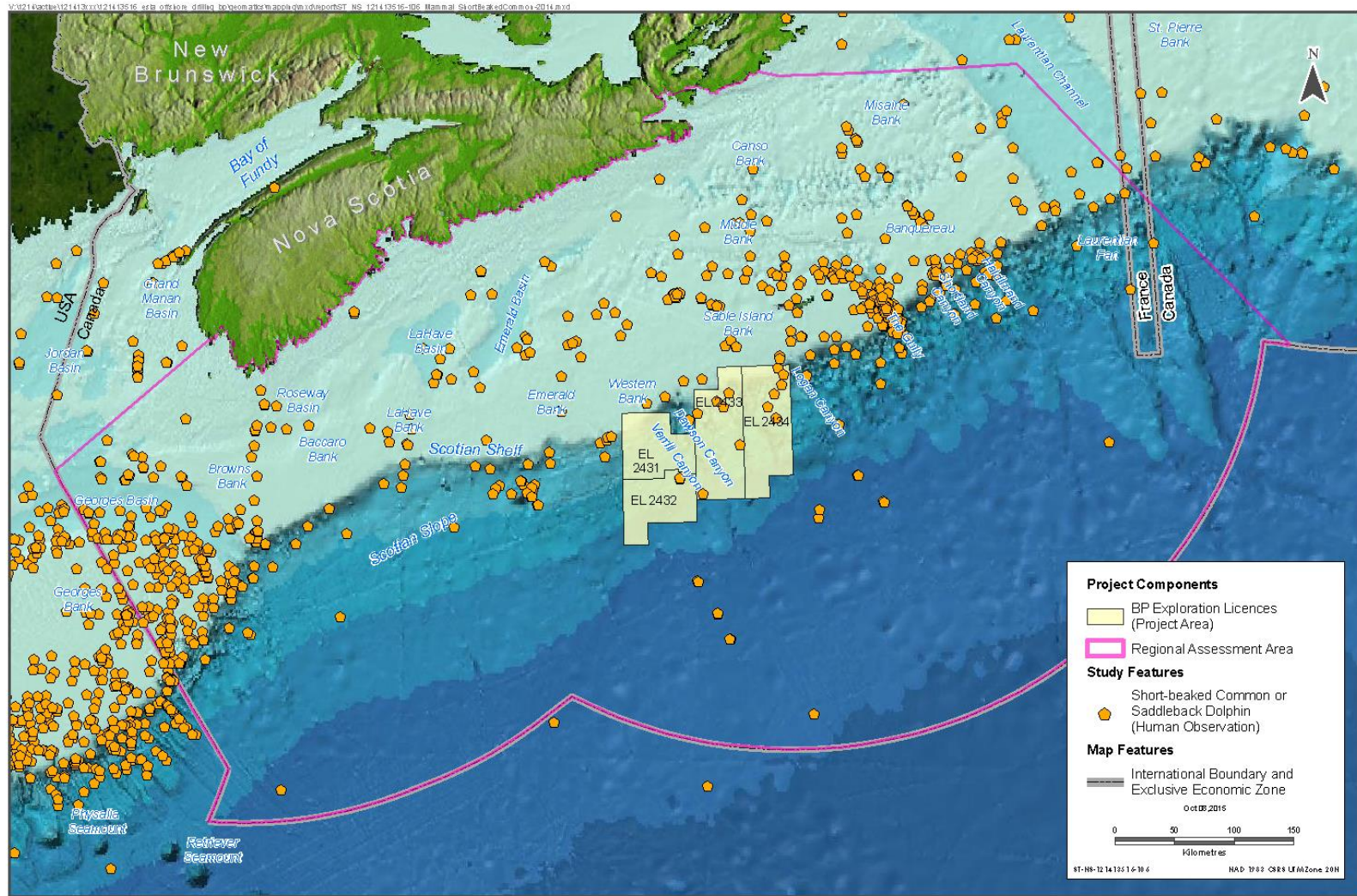
Disclaimer: This map is for illustrative purposes to support this Stantec project; questions can be directed to the issuing agency.



SCOTIAN BASIN EXPLORATION DRILLING PROJECT – ENVIRONMENTAL IMPACT STATEMENT

Appendix E – Marine Mammals Observation Data

Figure 6 Short-Beaked Common Dolphin Observation Data (1967-2013)

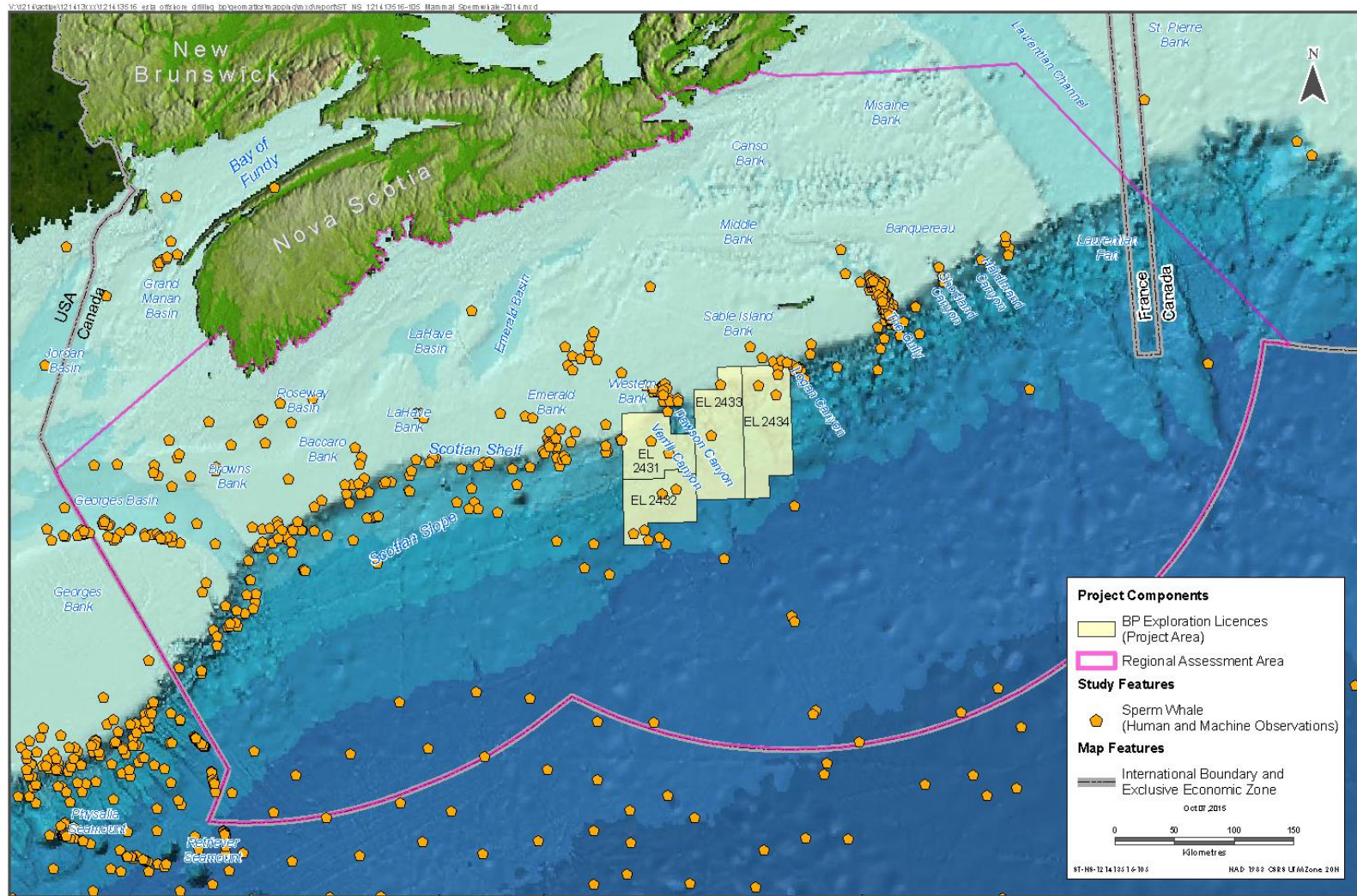


Sources: North Atlantic Fisheries Organization; Canada - Nova Scotia Offshore Petroleum Board; Natural Resources Canada; GEBCO global bathymetry grid; Ocean Biogeographic Information System; Intergovernmental Oceanographic Commission of UNESCO. Disclaimer: This map is for illustrative purposes to support this Stantec project; questions can be directed to the issuing agency.

SCOTIAN BASIN EXPLORATION DRILLING PROJECT – ENVIRONMENTAL IMPACT STATEMENT

Appendix E – Marine Mammals Observation Data

Figure 7 Sperm Whale Observation Data (1919-2013)



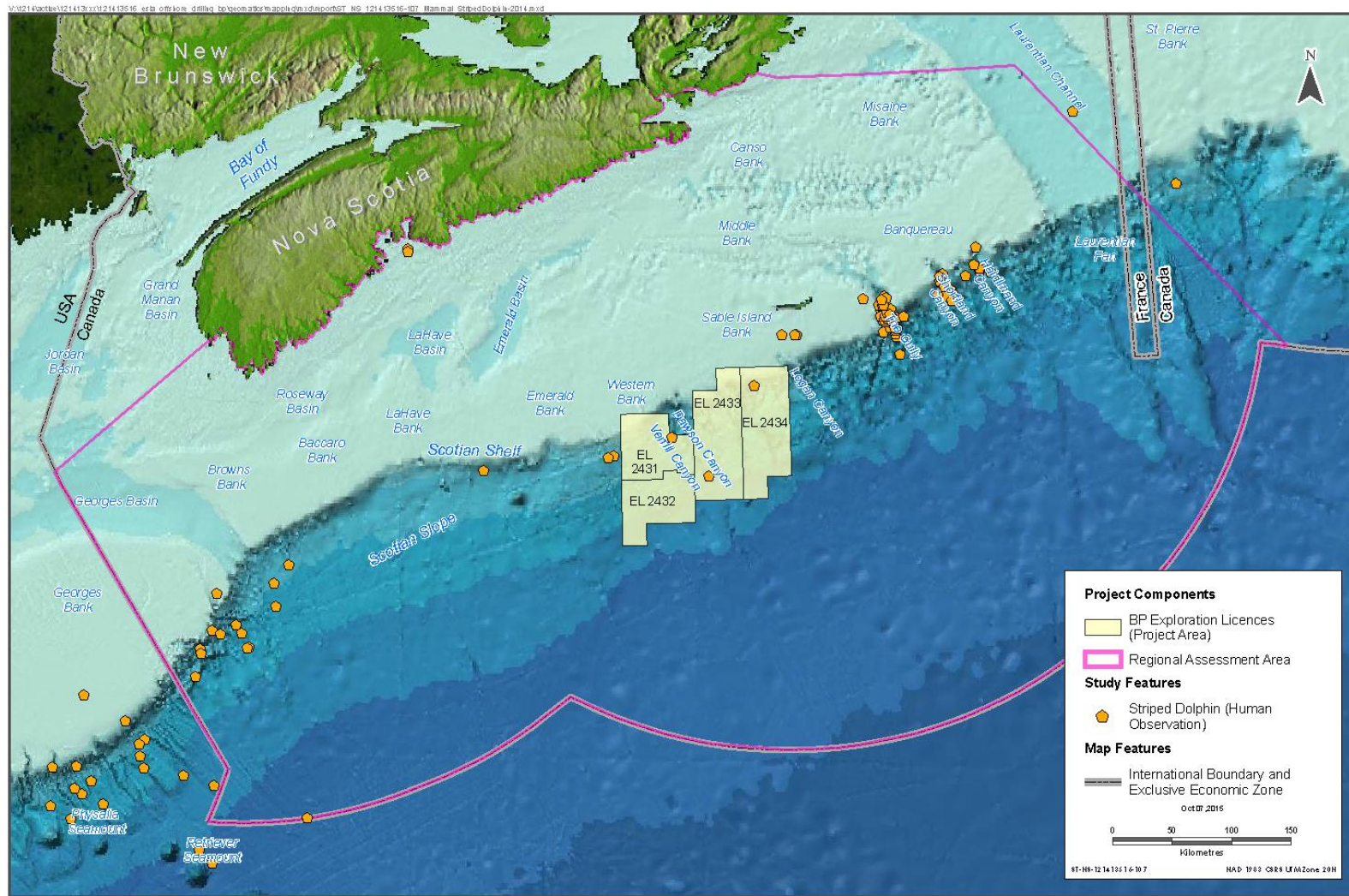
Source: North Atlantic Fisheries Organization, Canada-Nova Scotia Offshore Petroleum Board, Natural Resources Canada, GEBCO global bathymetry grid, Ocean Geographic private information system, Arrangement of Oceanographic Commission of UNESCO

Disclaimer: This map is for illustrative purposes to support this Statement project; questions can be directed to the issuing agency.

SCOTIAN BASIN EXPLORATION DRILLING PROJECT – ENVIRONMENTAL IMPACT STATEMENT

Appendix E – Marine Mammals Observation Data

Figure 8 Striped Dolphin Observation Data (1967-2013)



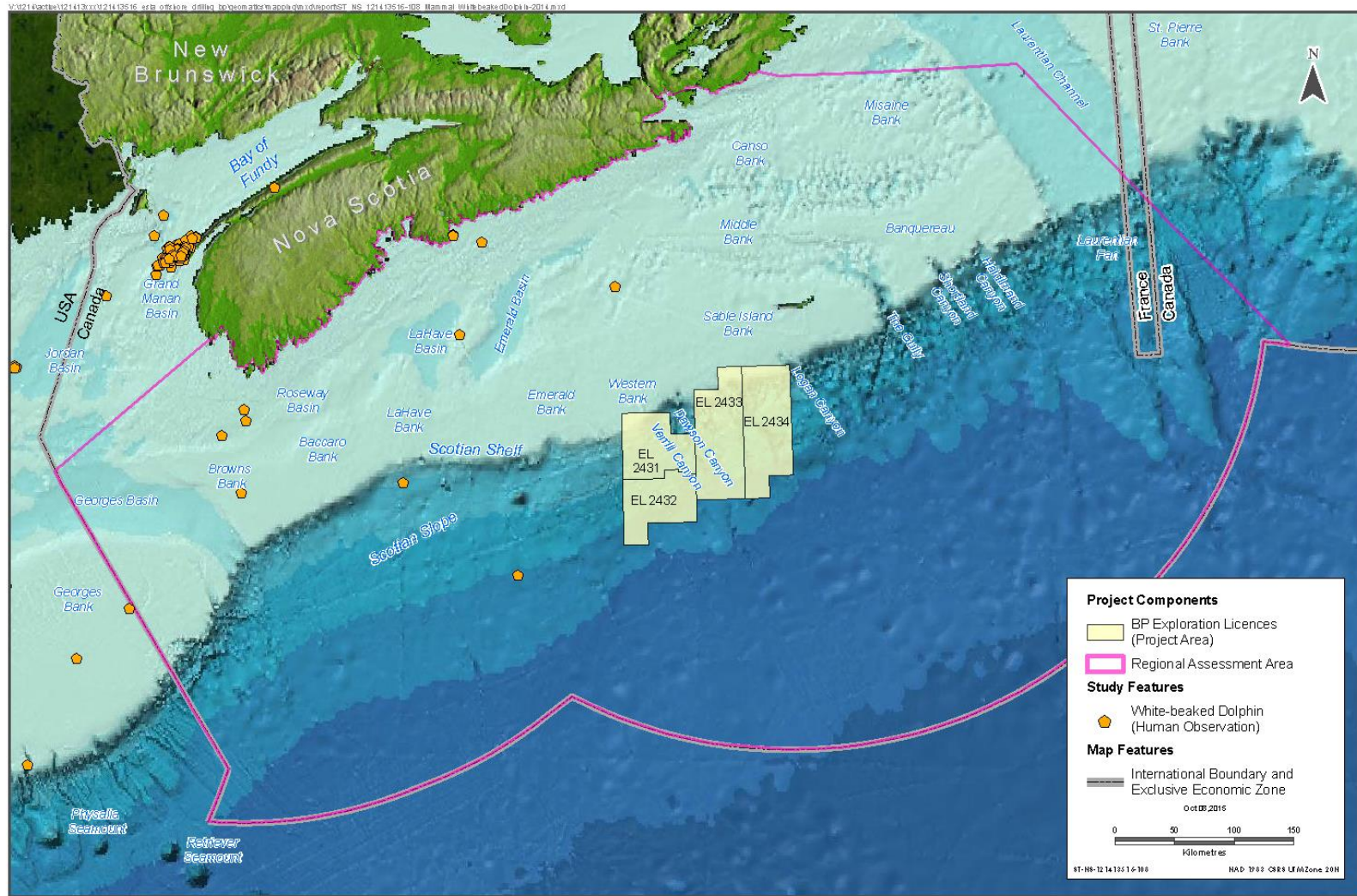
Source: North Atlantic Fisheries Organization, Canada-Nova Scotia Offshore Petroleum Board, Natural Resources Canada, GEBCO global bathymetry grid, Ocean Geographic Information System, Arrangement of Oceanographic Commission of UNESCO

Disclaimer: This map is for illustrative purposes to support this Stantec project; questions can be directed to the issuing agency.

SCOTIAN BASIN EXPLORATION DRILLING PROJECT – ENVIRONMENTAL IMPACT STATEMENT

Appendix E – Marine Mammals Observation Data

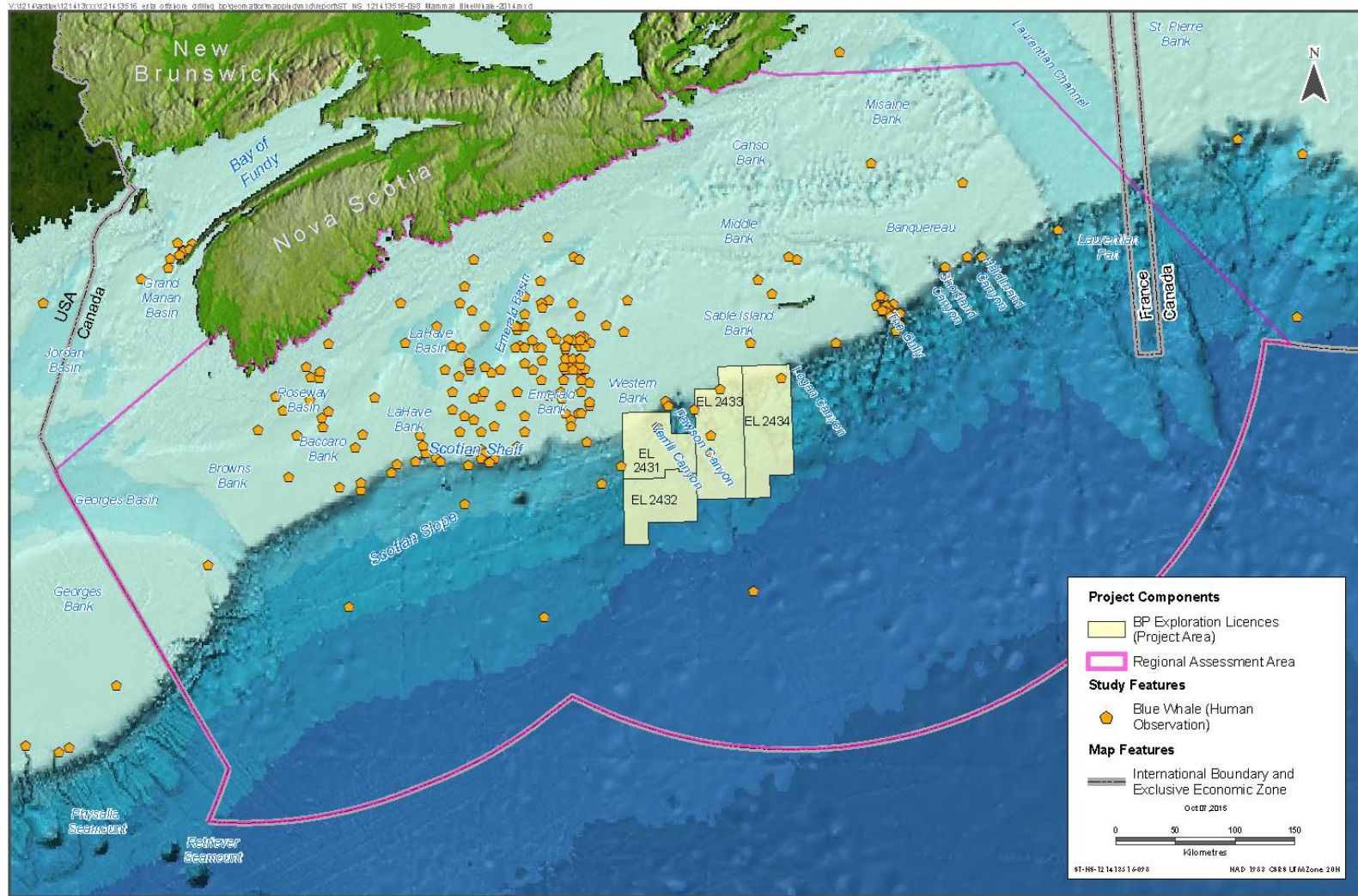
Figure 9 White-beaked Dolphin Observation Data (1968-2013)



SCOTIAN BASIN EXPLORATION DRILLING PROJECT – ENVIRONMENTAL IMPACT STATEMENT

Appendix E – Marine Mammals Observation Data

Figure 10 Blue Whale Observation Data (1966 to 2012)

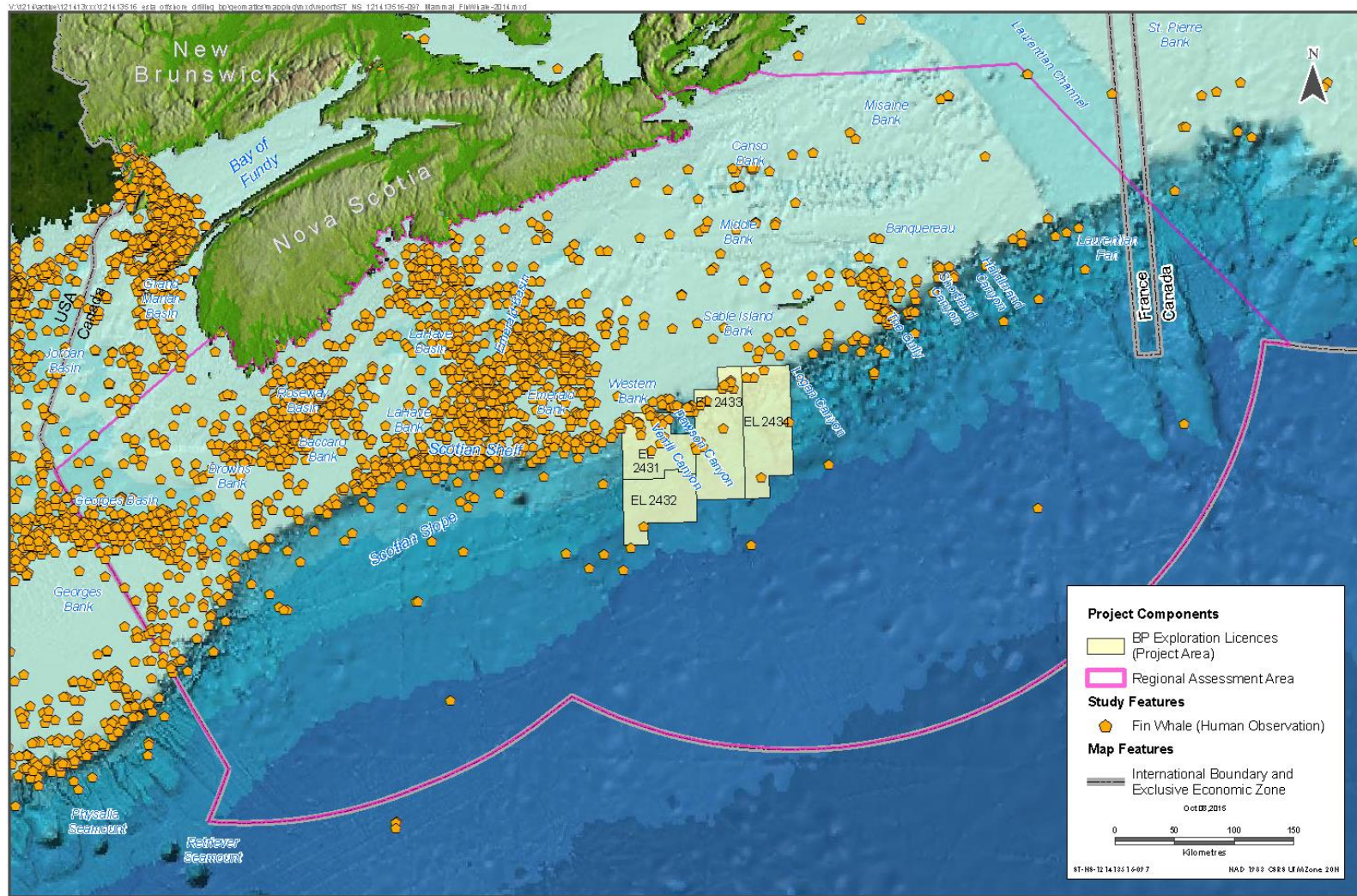


Sources: North Atlantic Fisheries Organization; Canada-Nova Scotia Offshore Petroleum Board; Natural Resources Canada; GEBCO global bathymetry grid; Ocean Biogeographic Information System; Arrangement Intergouvernemental; Commission of UNESCO. Disclaimer: This map is for illustrative purposes to support this Statement project; questions can be directed to the issuing agency.

SCOTIAN BASIN EXPLORATION DRILLING PROJECT – ENVIRONMENTAL IMPACT STATEMENT

Appendix E – Marine Mammals Observation Data

Figure 11 Fin Whale Observation Data (1964-2013)

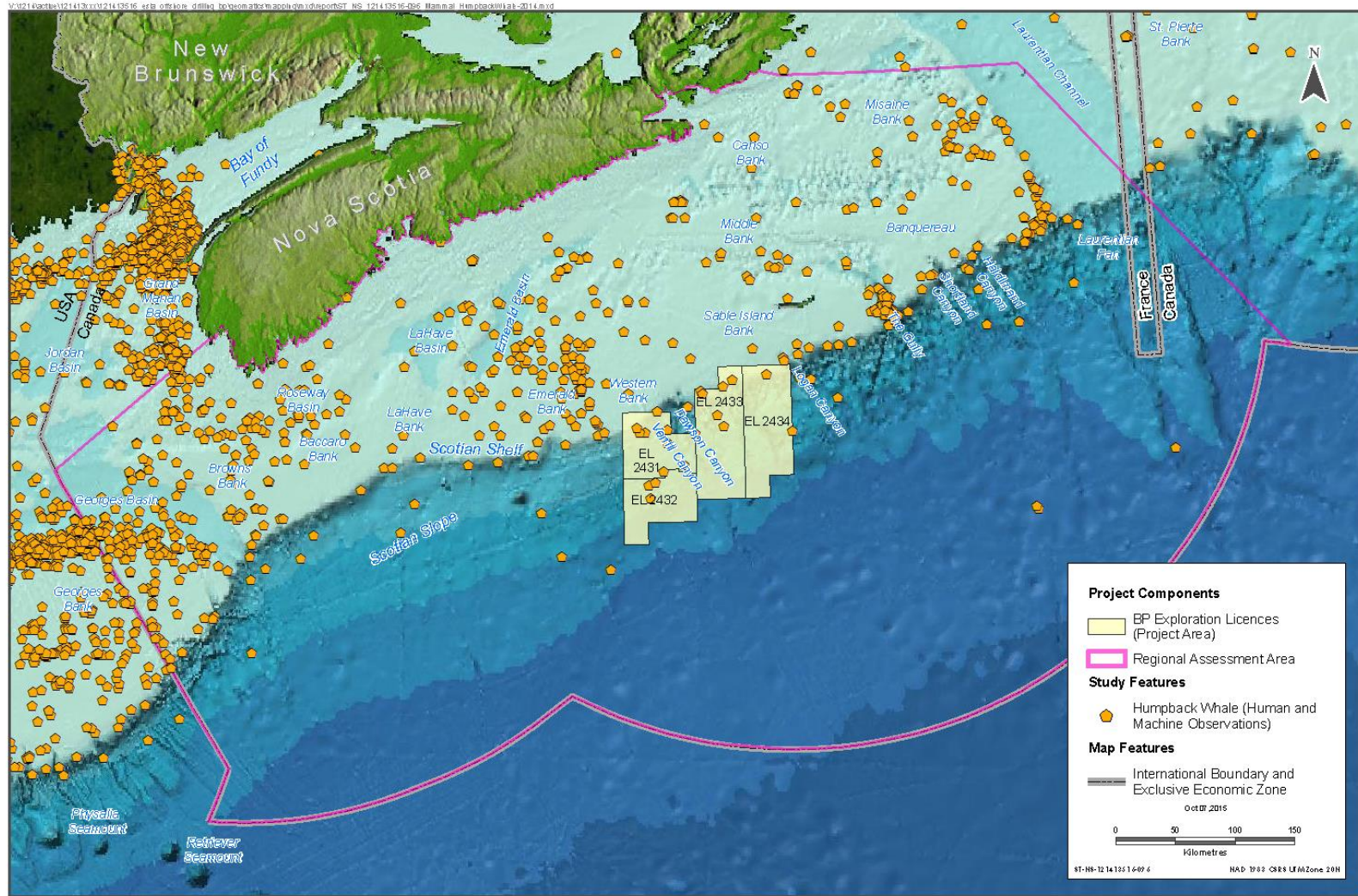


Sources: North Atlantic Fisheries Organization; Canada - Nova Scotia Offshore Petroleum Board; Natural Resources Canada; GEBCO global bathymetry grid; Ocean Biogeographic Information System; Intergovernmental Oceanographic Commission of UNESCO. Disclaimer: This map is for illustrative purposes to support this Stantec project; questions can be directed to the issuing agency.

SCOTIAN BASIN EXPLORATION DRILLING PROJECT – ENVIRONMENTAL IMPACT STATEMENT

Appendix E – Marine Mammals Observation Data

Figure 12 Humpback Whale Observation Data (1966-2013)



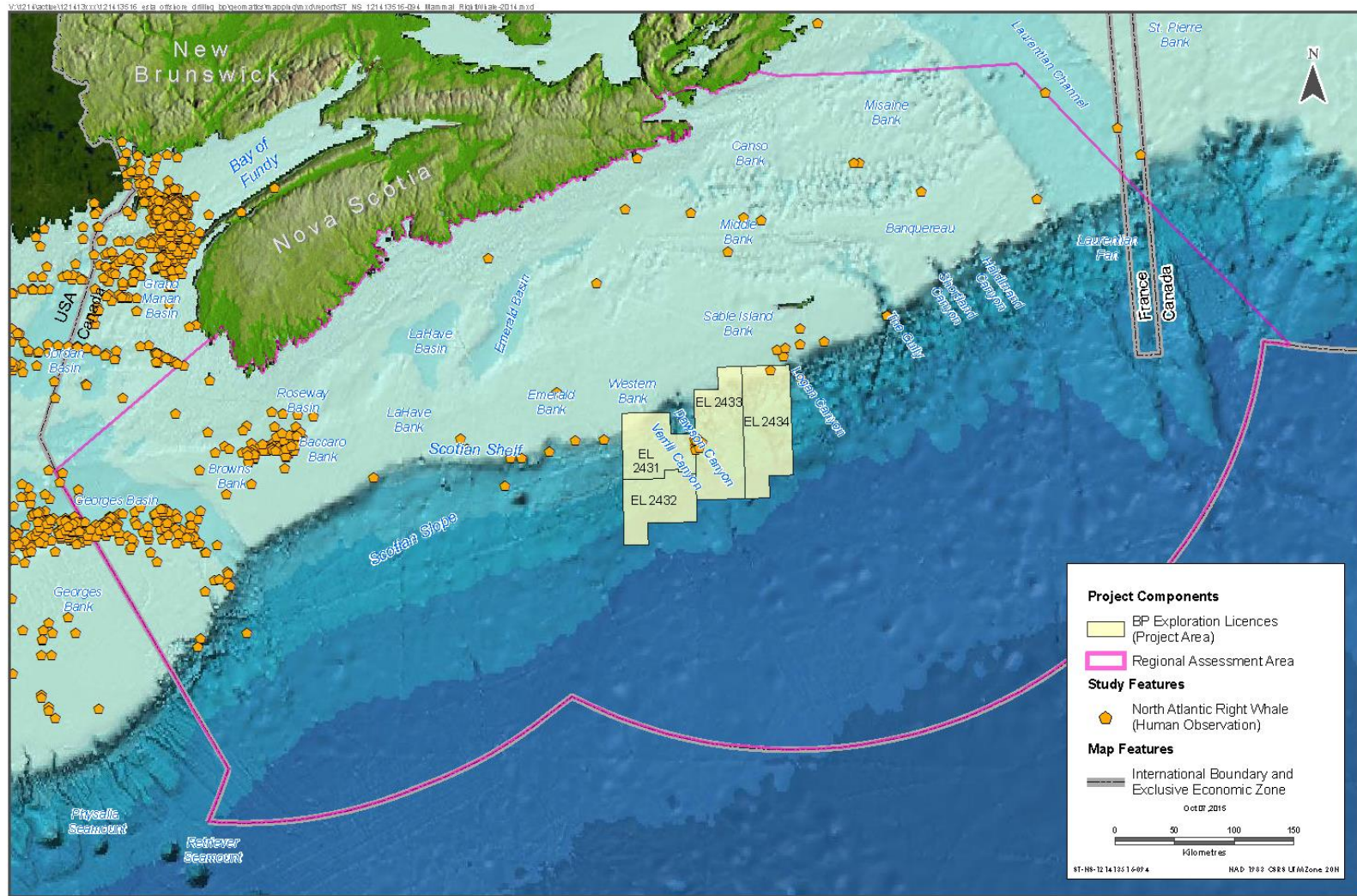
Source: North Atlantic Fisheries Organization, Canada-Nova Scotia Offshore Petroleum Board, Natural Resources Canada, GEBCO global bathymetry grid, Ocean Geographic, Informa Information Systems, Intergovernmental Oceanographic Commission of UNESCO

Disclaimer: This map is for illustrative purposes to support this Stantec project; questions can be directed to the issuing agency.

SCOTIAN BASIN EXPLORATION DRILLING PROJECT – ENVIRONMENTAL IMPACT STATEMENT

Appendix E – Marine Mammals Observation Data

Figure 13 Right Whale Observation Data (1964-2013)



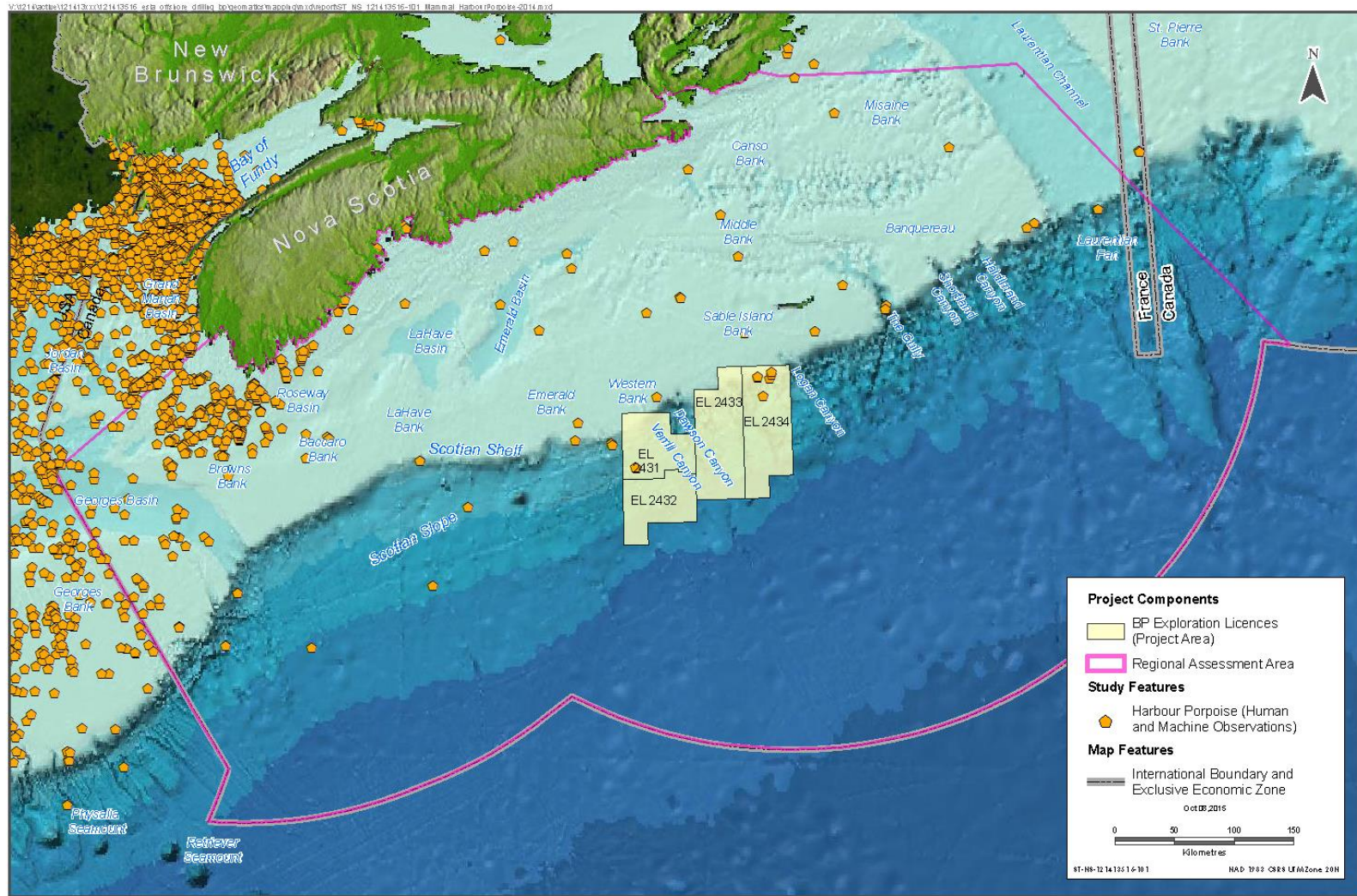
Sources: North Atlantic Fisheries Organization; Canada-Nova Scotia Offshore Petroleum Board; Natural Resources Canada; GEBCO global bathymetry grid; Ocean Biogeographic Information System; Arrêtés gouvernementaux; Commission of UNESCO

Disclaimer: This map is for illustrative purposes to support this Statement project; questions can be directed to the issuing agency.

SCOTIAN BASIN EXPLORATION DRILLING PROJECT – ENVIRONMENTAL IMPACT STATEMENT

Appendix E – Marine Mammals Observation Data

Figure 14 Harbour Porpoise Observation Data (1966-2013)



Source: North Atlantic Fisheries Organization, Canada-Nova Scotia Offshore Petroleum Board, Natural Resources Canada, GEBCO global bathymetry grid, Ocean Biogeographic Information System, Intergovernmental Oceanographic Commission of UNESCO

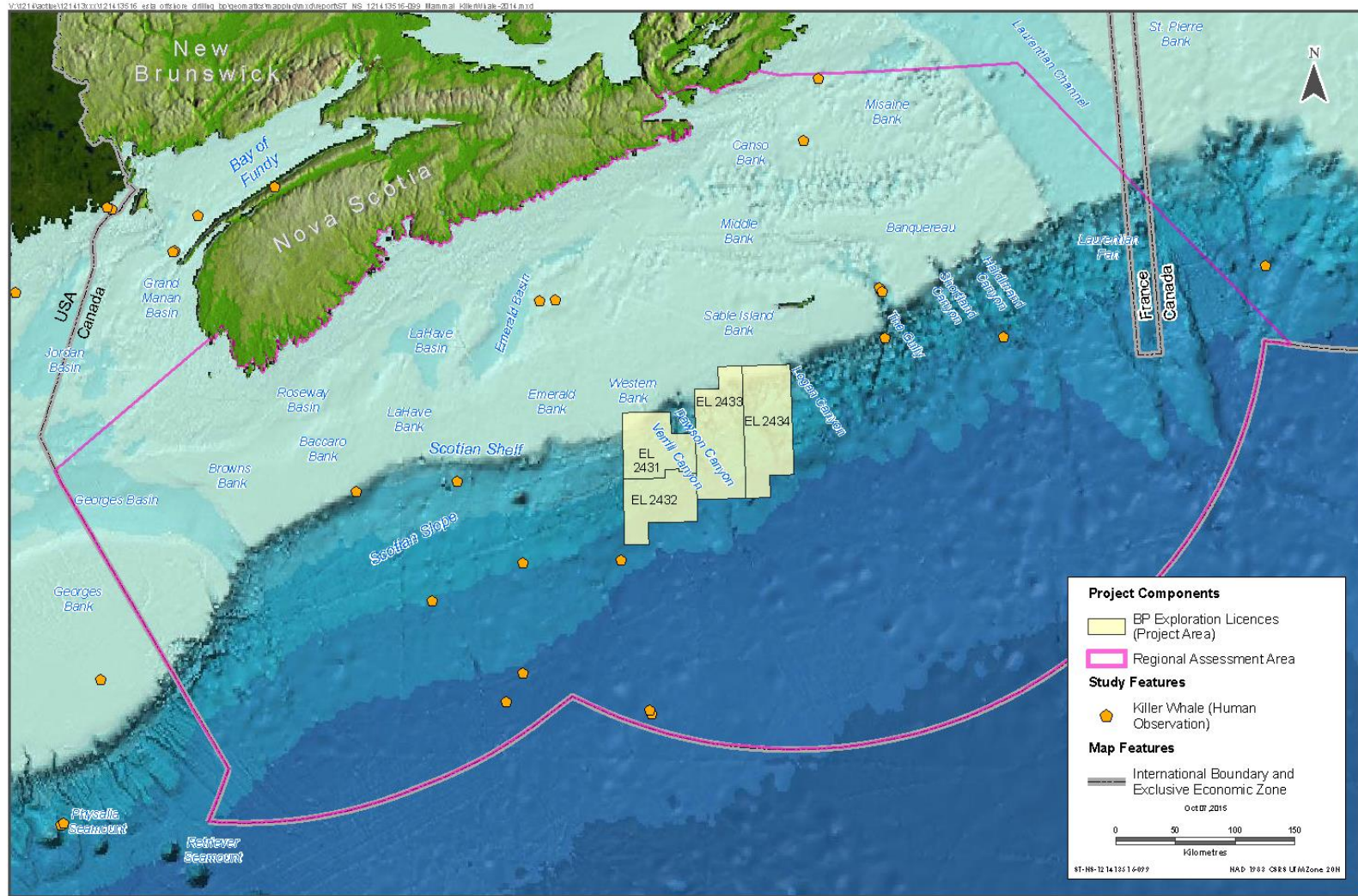
Disclaimer: This map is for illustrative purposes to support this Statement project; questions can be directed to the issuing agency.



SCOTIAN BASIN EXPLORATION DRILLING PROJECT – ENVIRONMENTAL IMPACT STATEMENT

Appendix E – Marine Mammals Observation Data

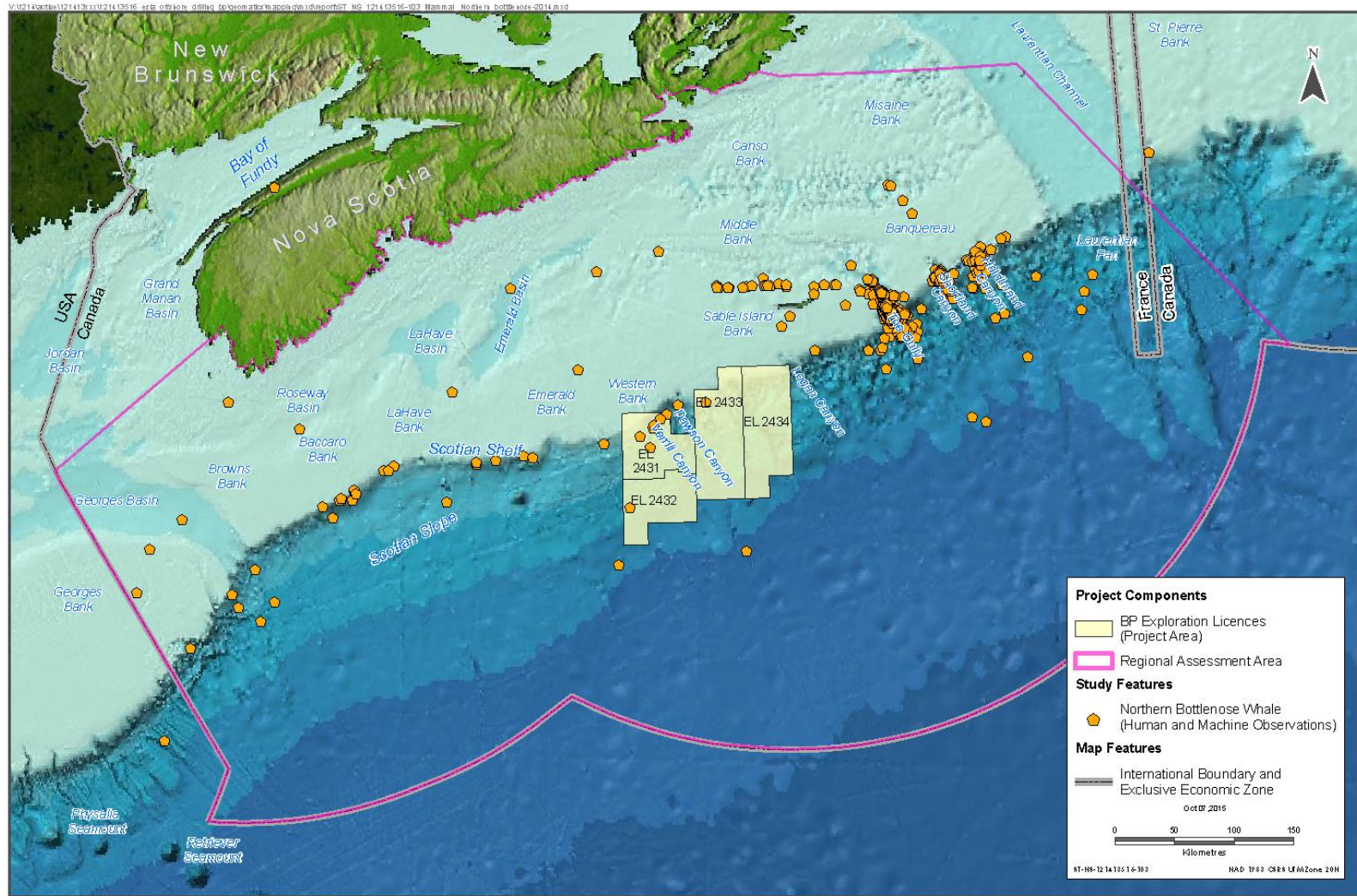
Figure 15 Killer Whale Observation Data (1964-2012)



SCOTIAN BASIN EXPLORATION DRILLING PROJECT – ENVIRONMENTAL IMPACT STATEMENT

Appendix E – Marine Mammals Observation Data

Figure 16 Northern Bottlenose Whale Observation Data (1964-2013)



Source: North Atlantic Fisheries Organization, Canada-Nova Scotia Offshore Petroleum Board, Natural Resources Canada, GEBCO global bathymetry grid, Ocean Geographic, Informal Information System, Arrangement de l'Organisation de l'Économie de l'Atlantique du Nord-Est, Commission of UNESCO

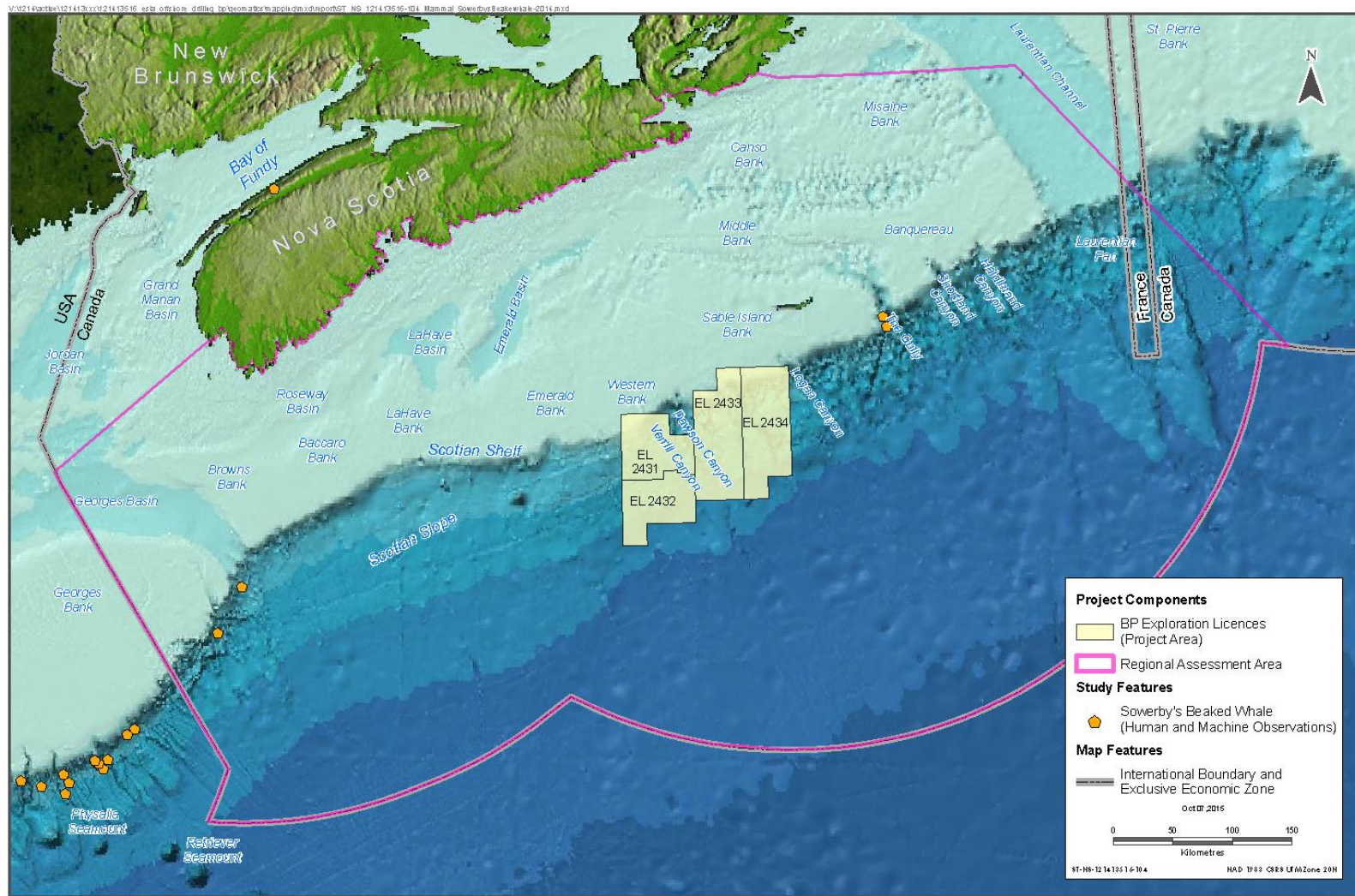
Disclaimer: This map is for illustrative purposes to support this Stantec project; questions can be directed to the issuing agency.



SCOTIAN BASIN EXPLORATION DRILLING PROJECT – ENVIRONMENTAL IMPACT STATEMENT

Appendix E – Marine Mammals Observation Data

Figure 17 Sowerby’s Beaked Whale Observation Data (1998-2004)



Sources: North Atlantic Fisheries Organization; Canada-Nova Scotia Offshore Petroleum Board; Natural Resources Canada; GEBCO global bathymetry grid; Ocean Geographic; Informal Information System; Arrangement de l'Organisation de l'Économie Mondiale; Commission of UNESCO. Disclaimer: This map is for illustrative purposes to support this Statement project; questions can be directed to the issuing agency.