

Project 4 WTR

Ecoregion Number and Ecodistrict Name

- 90, Berens River
- 90, Wrong Lake

- Project 1: PR304 to Berens River

Proposed Road Alignments

- Project 4: Berens River FN to Poplar River FN
- Project 4 Study Area

Base Data

- Local Road
- Winter Road
- Transmission Line
- First Nation

Data Source:
 Ecodistricts: Government of Canada,
 Agriculture and Agri-Food Canada,
 Ecological Stratification Working Group, 2002



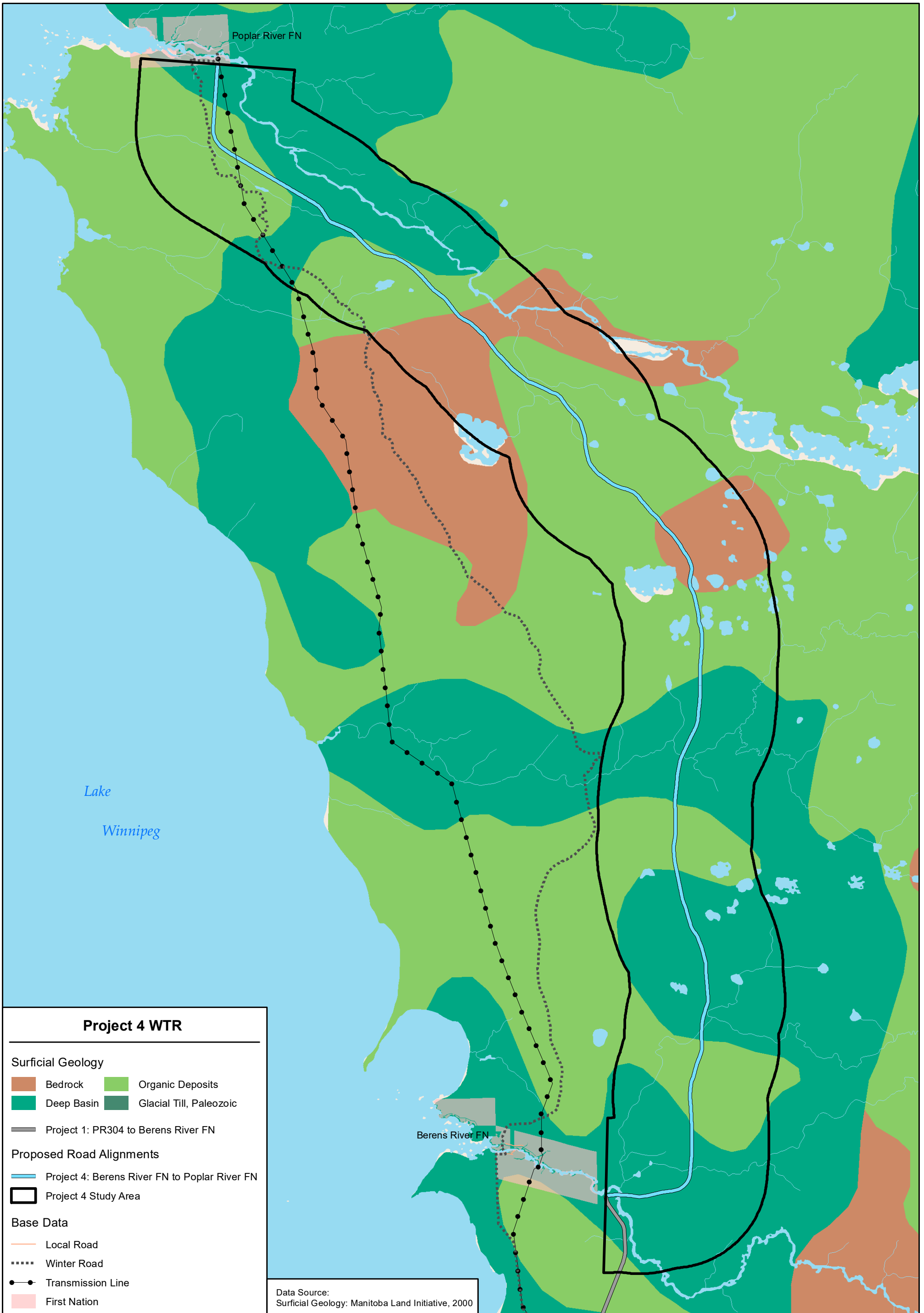
Coordinate System: UTM Zone 14N NAD83
 Data Source: MESRA, Joro, MCWS
 Date Created: March 08, 2016

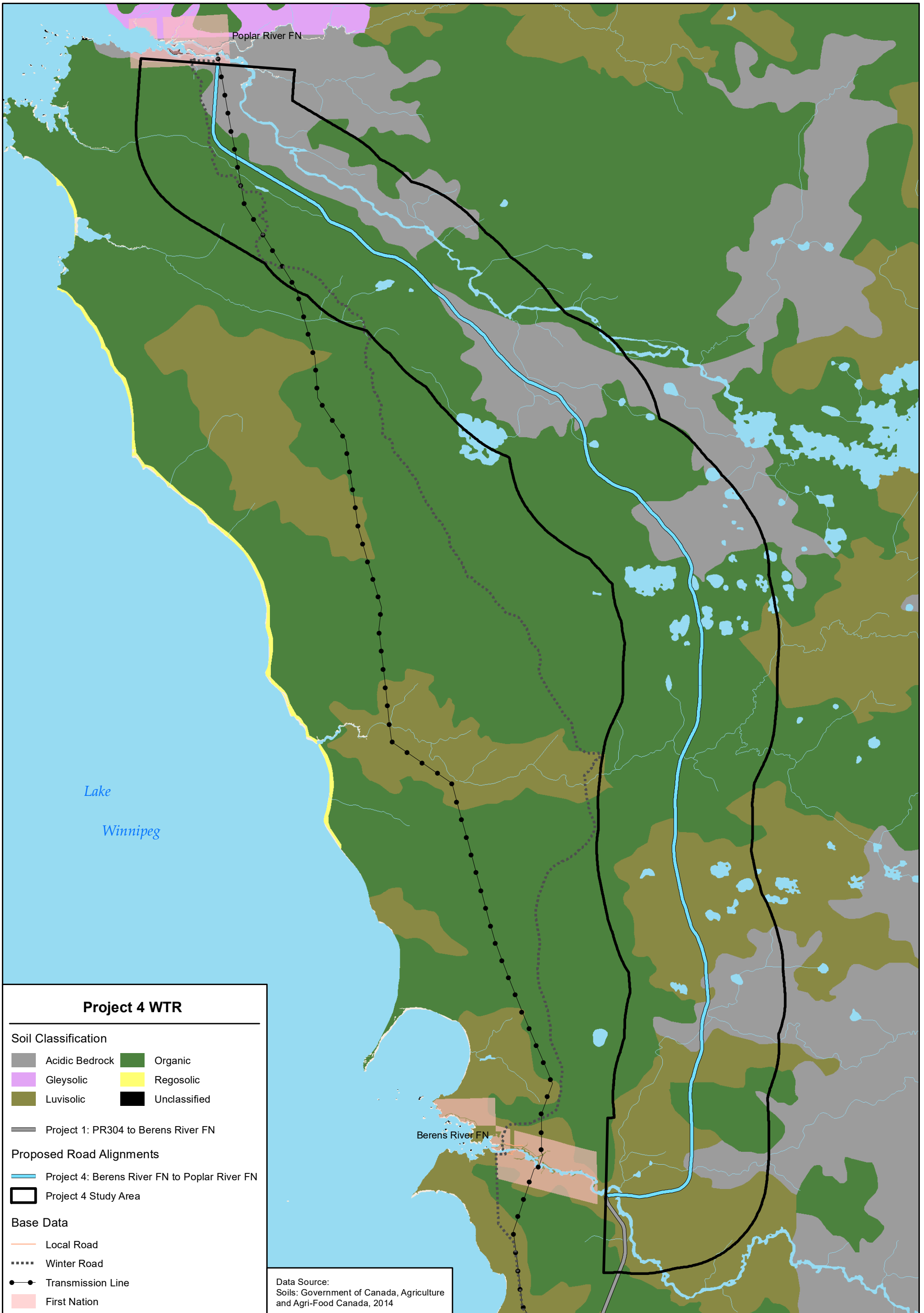


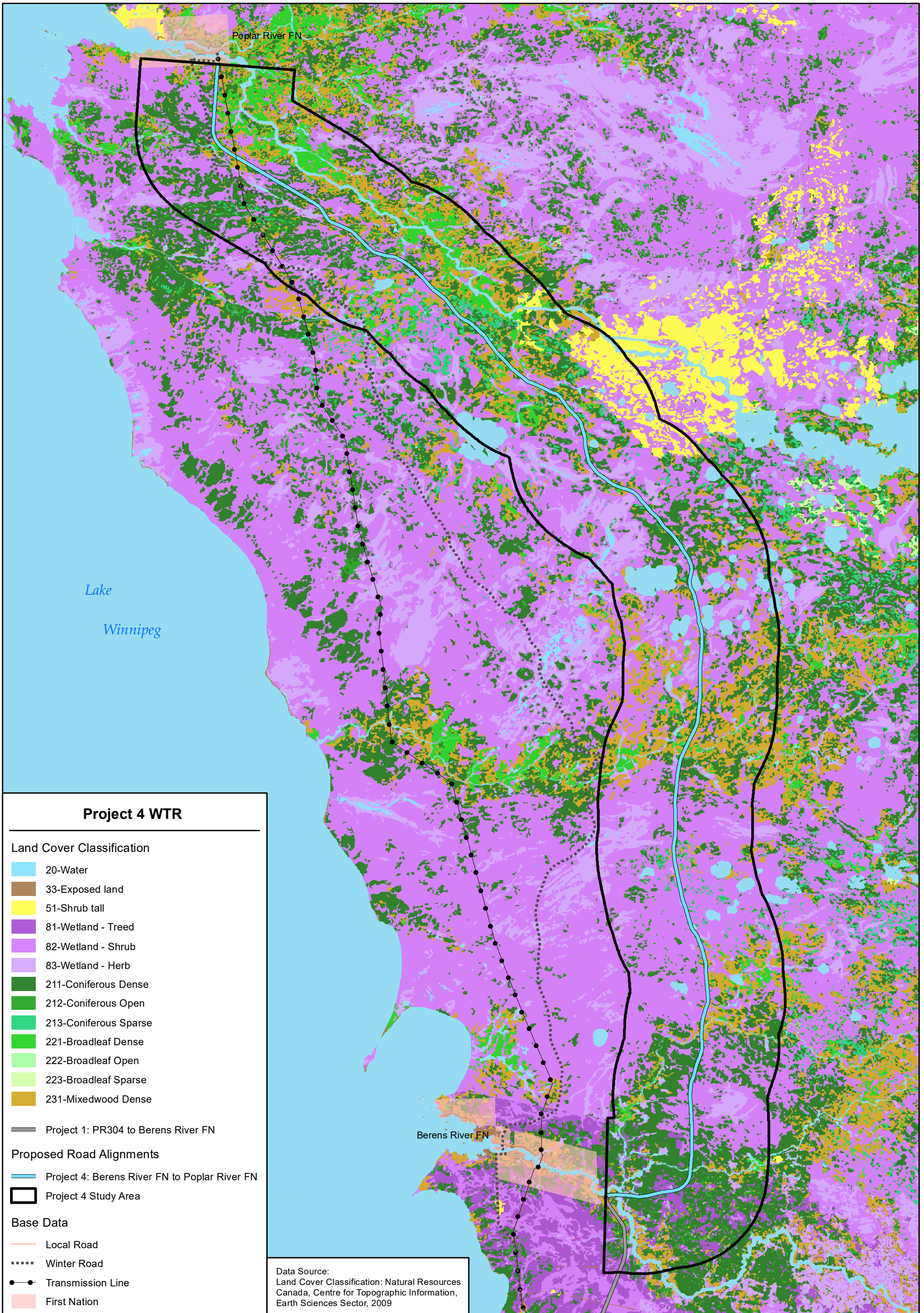
1:225,000

Project 4 Wildlife Technical Report

Ecological Land Classification in the Project 4 Study Area







Project 4 WTR

Land Cover Classification

- 20-Water
- 33-Exposed land
- 51-Shrub tall
- 81-Wetland - Treed
- 82-Wetland - Shrub
- 83-Wetland - Herb
- 211-Coniferous Dense
- 212-Coniferous Open
- 213-Coniferous Sparse
- 221-Broadleaf Dense
- 222-Broadleaf Open
- 223-Broadleaf Sparse
- 231-Mixedwood Dense

— Project 1: PR304 to Berens River FN

Proposed Road Alignments

- Project 4: Berens River FN to Poplar River FN
- Project 4 Study Area

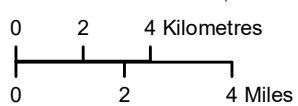
Base Data

- Local Road
- Winter Road
- Transmission Line
- First Nation

Data Source:
Land Cover Classification: Natural Resources
Canada, Centre for Topographic Information,
Earth Sciences Sector, 2009



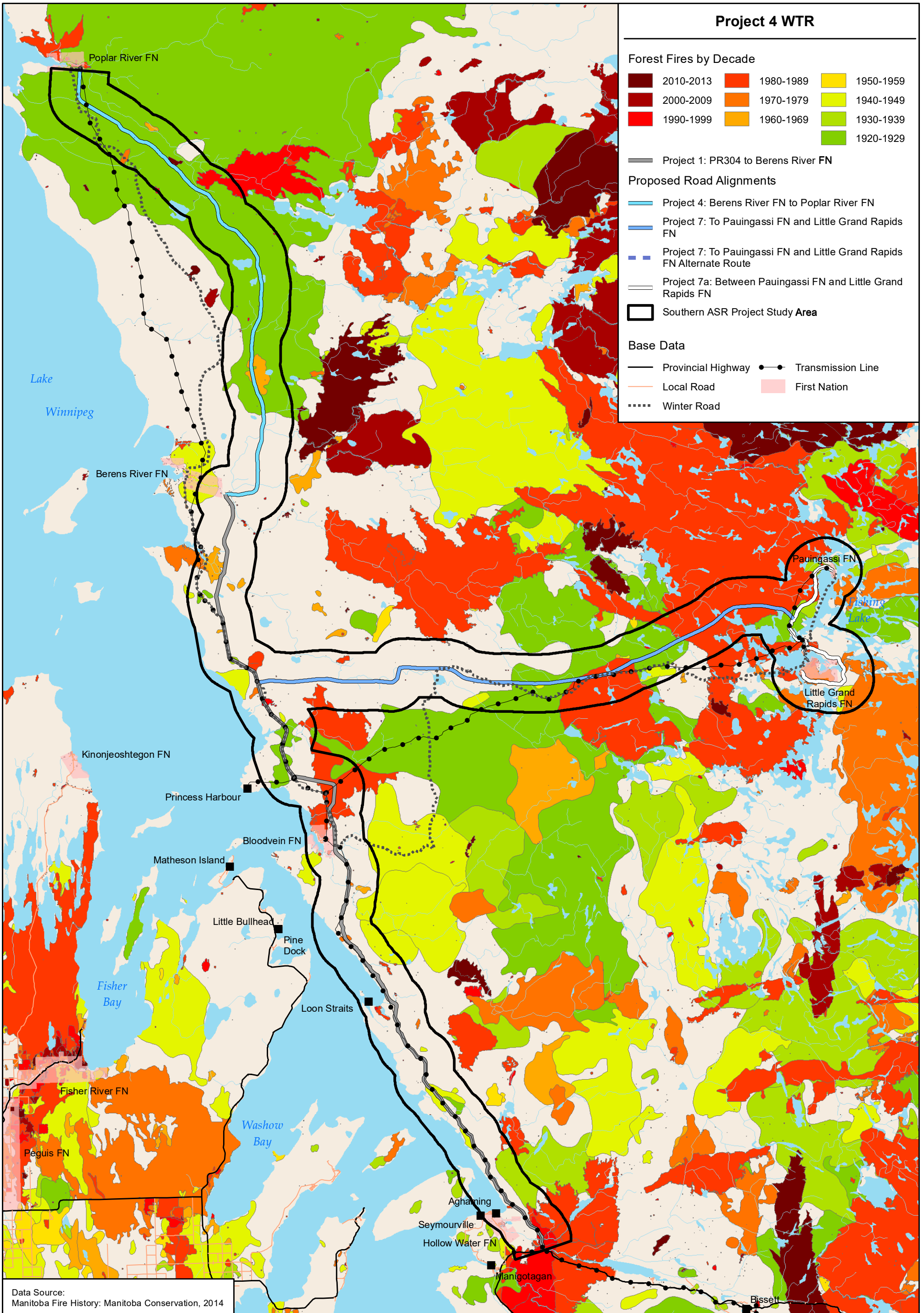
Coordinate System: UTM Zone 14N NAD83
Data Source: MESRA, Joro, MCWS
Date Created: March 08, 2016



1:225,000

Project 4 Wildlife Technical Report

Land Cover Classification in the Project 4 Study Area



Data Source: Manitoba Fire History: Manitoba Conservation, 2014



Coordinate System: UTM Zone 14N NAD83
 Data Source: MESRA, Joro, MCWS
 Date Created: March 08, 2016

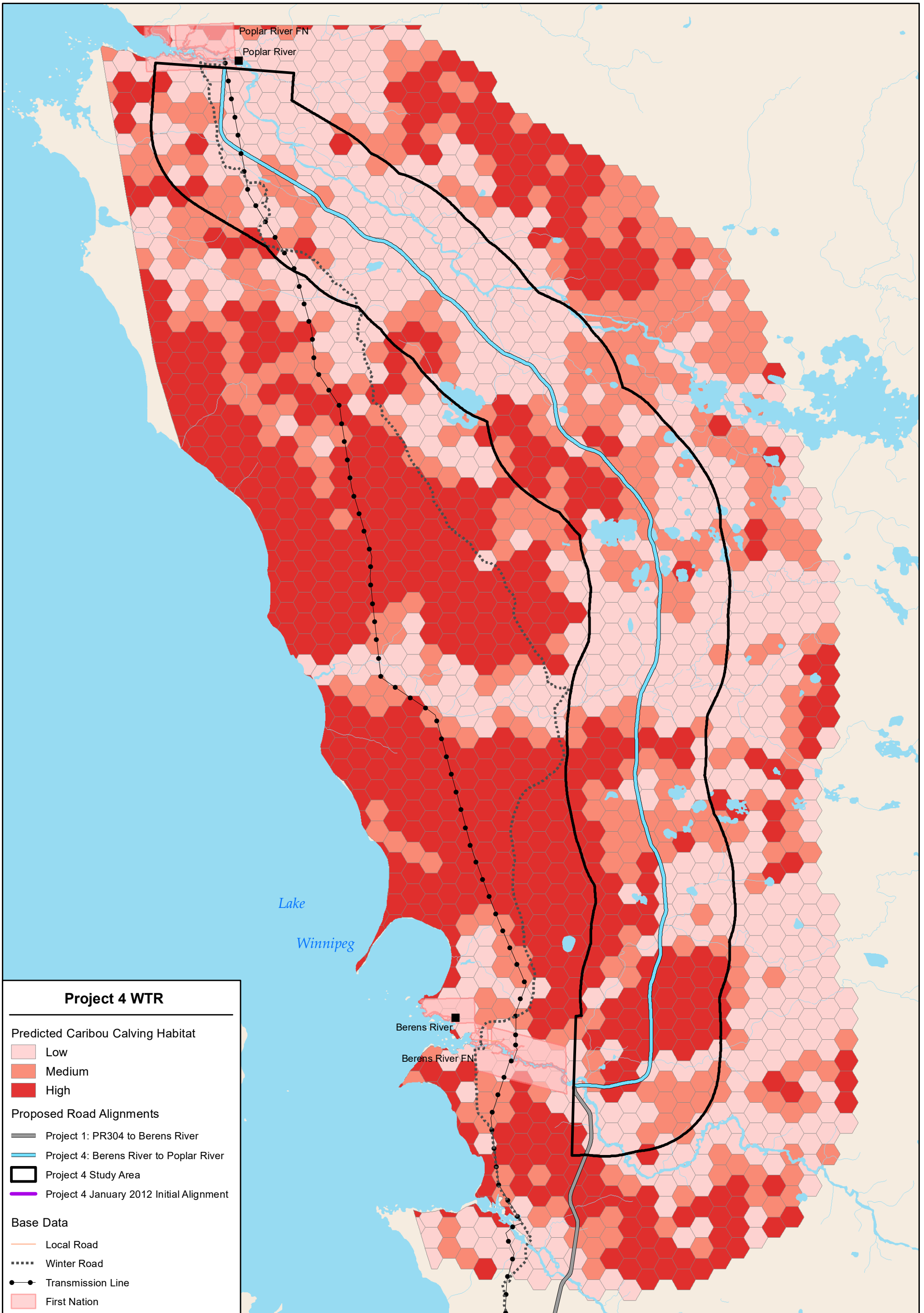
0 5 10 Kilometres
 0 5 10 Miles

1:600,000

Project 4 Wildlife Technical Report

Historic Forest Fire Activity in the Southern Regional Project Study Area

Map 08



Project 4 WTR

Predicted Caribou Calving Habitat

- Low
- Medium
- High

Proposed Road Alignments

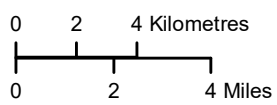
- Project 1: PR304 to Berens River
- Project 4: Berens River to Poplar River
- Project 4 Study Area
- Project 4 January 2012 Initial Alignment

Base Data

- Local Road
- Winter Road
- Transmission Line
- First Nation



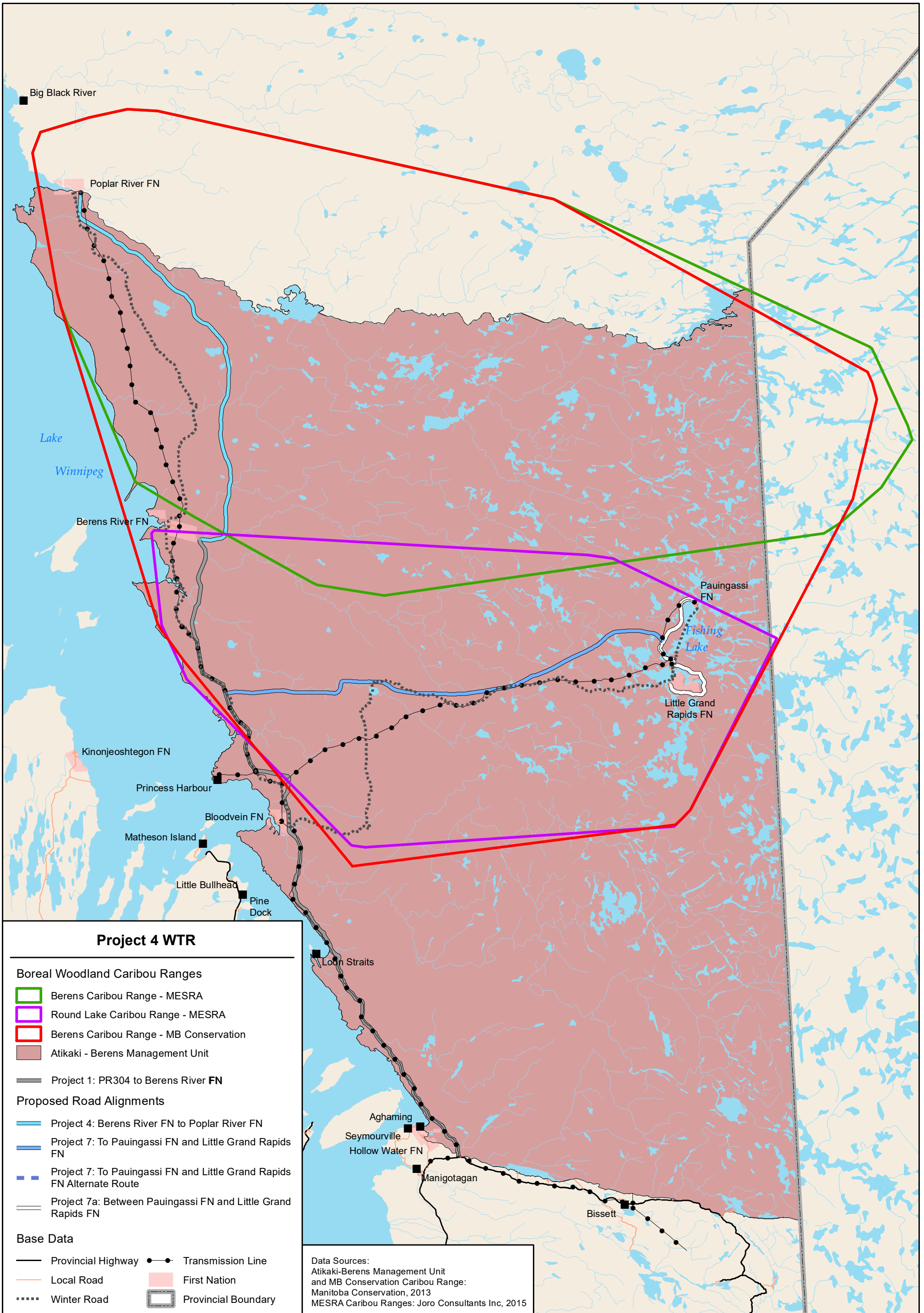
Coordinate System: UTM Zone 14N NAD83
 Data Source: MESRA, Joro, MCWS
 Date Created: March 08, 2016



1:250,000

Project 4 Wildlife Technical Report

Caribou Calving Predicted High Quality Habitat - P4 Area



Project 4 WTR

Boreal Woodland Caribou Ranges

- ▭ Berens Caribou Range - MESRA
- ▭ Round Lake Caribou Range - MESRA
- ▭ Berens Caribou Range - MB Conservation
- ▭ Atikaki - Berens Management Unit

Proposed Road Alignments

- ▬ Project 4: Berens River FN to Poplar River FN
- ▬ Project 7: To Pauingassi FN and Little Grand Rapids FN
- - - Project 7: To Pauingassi FN and Little Grand Rapids FN Alternate Route
- ▬ Project 7a: Between Pauingassi FN and Little Grand Rapids FN

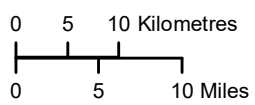
Base Data

- ▬ Provincial Highway
- ▬ Local Road
- - - Winter Road
- - ● Transmission Line
- ▭ First Nation
- ▭ Provincial Boundary

Data Sources:
 Atikaki-Berens Management Unit
 and MB Conservation Caribou Range:
 Manitoba Conservation, 2013
 MESRA Caribou Ranges: Joro Consultants Inc, 2015



Coordinate System: UTM Zone 14N NAD83
 Data Source: MESRA, Joro, MCWS
 Date Created: March 08, 2016



1:735,000

Project 4 Wildlife Technical Report

Delineation of the Caribou Ranges in the Southern Regional Project Study Area

