



Project 4 - All-Season Road Connecting Berens River to Poplar River First Nation

Figure 6-2
Regional Assessment Area

- | | | |
|--|-----------------------------------|---------------------------|
| P4 All-Season Road Alignment | Northern Affairs Community | Provincial Park |
| PI All-Season Road (South of Berens River to PTH 304) - Under Construction | Berens River First Nation Reserve | Ecological Reserve |
| 2013/2014 Manitoba Winter Road | Poplar River First Nation Reserve | Manitoba / Ontario Border |
| Regional Assessment Area | Other First Nations | |

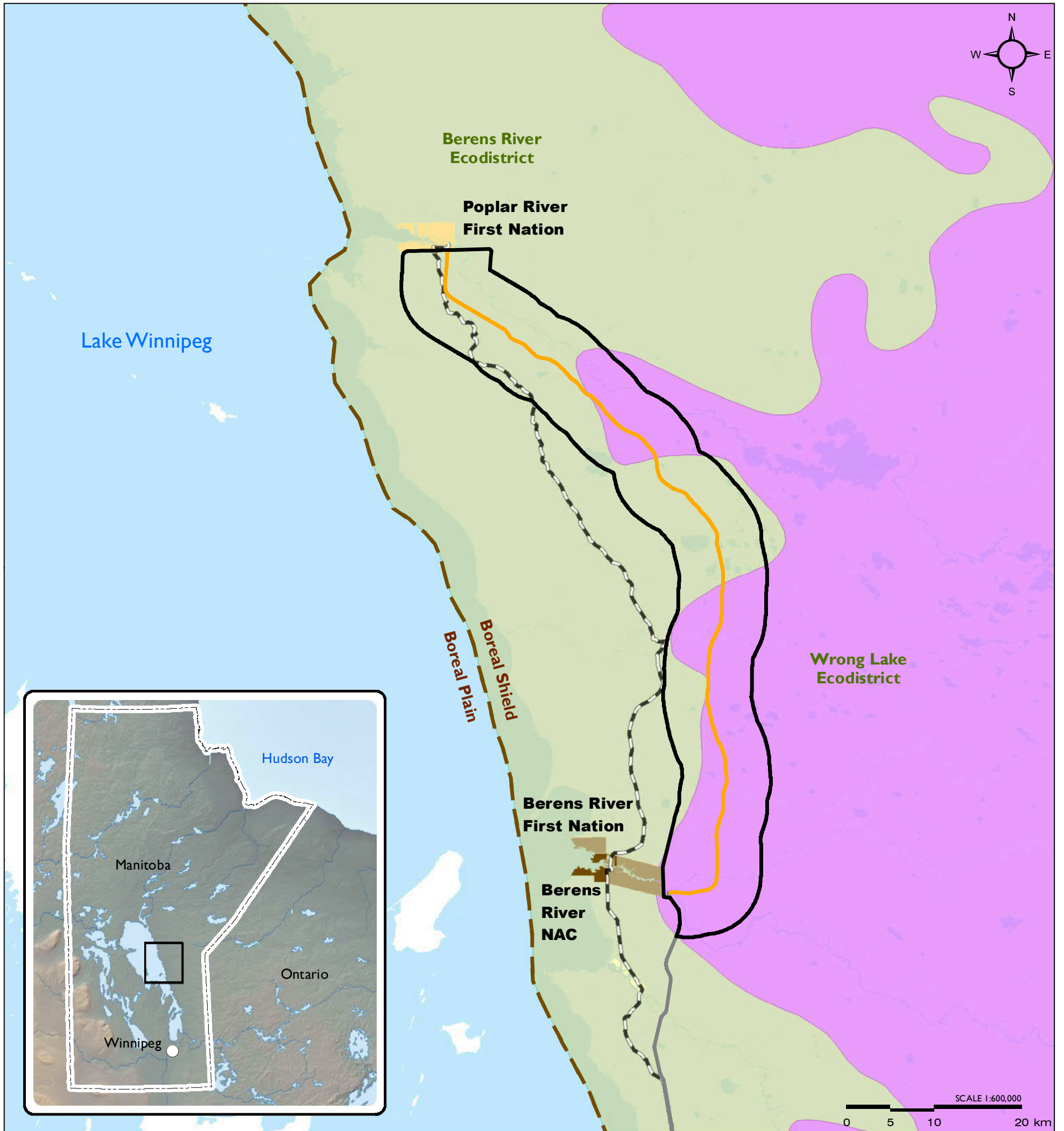
Northern boundary of the Regional Assessment Area follows the northern boundary of the First Nations Protected Area Accord as indicated in the Asatiwisiwe Aki Lands Management Plan (Poplar River First Nation 2011). The southern boundary follows the Bloodvein First Nation (FN) boundary to the south, then follows the winter road to Little Grand Rapids FN boundary, then follows that FN boundary to the south, then straight east to the Ontario border from the SE corner of the Little Grand Rapids FN boundary.

Map Drawing Information:
ESRI Base Layers, Province of
Manitoba, CanVec, GeoGratis,
Dillon Consulting Limited

Map Created By: ECH
Map Checked By: MG/PS/LD
Map Projection: NAD 1983 UTM Zone 14N

DATE: 4/8/2016





Project 4 - All-Season Road Connecting Berens River to Poplar River First Nation

Figure 7-2
Ecological Land Classification
in the Project Area

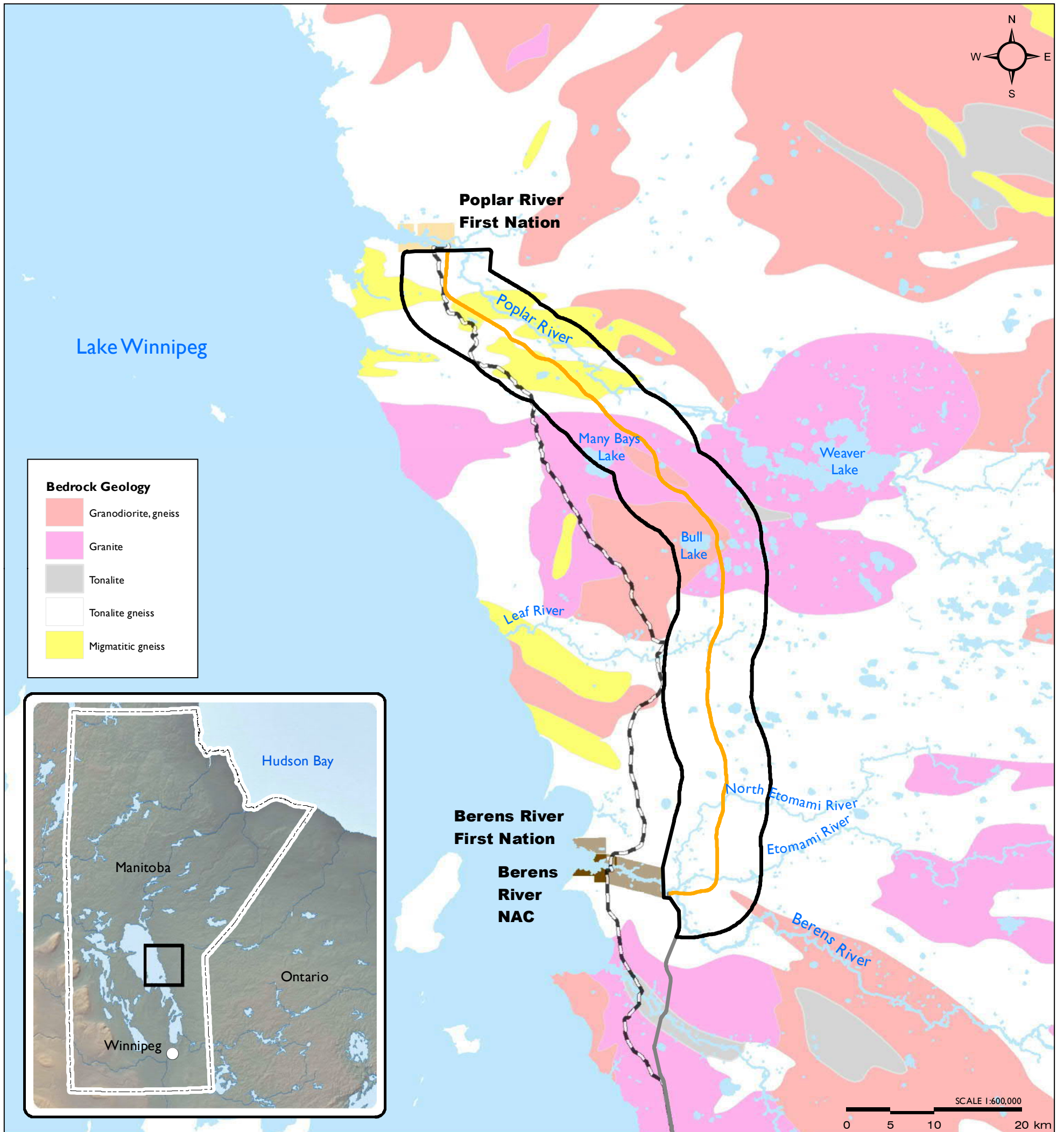
P4 All-Season Road Alignment	Berens River Northern Affairs Community	Ecodistricts:
PI All-Season Road (South of Berens to PTH 304) - Under Construction	Berens River First Nation Reserve	Berens River Ecodistrict
2013/2014 Manitoba Winter Road	Poplar River First Nation Reserve	Wrong Lake Ecodistrict
Local Assessment Area	Ecozone Boundary	

Map Drawing Information:
ESRI Base Layers, Province of
Manitoba, CanVec, GeoGratis,
Dillon Consulting Limited

Map Created By: ECH
Map Checked By: MG/PS/LD
Map Projection: NAD 1983 UTM Zone 14N

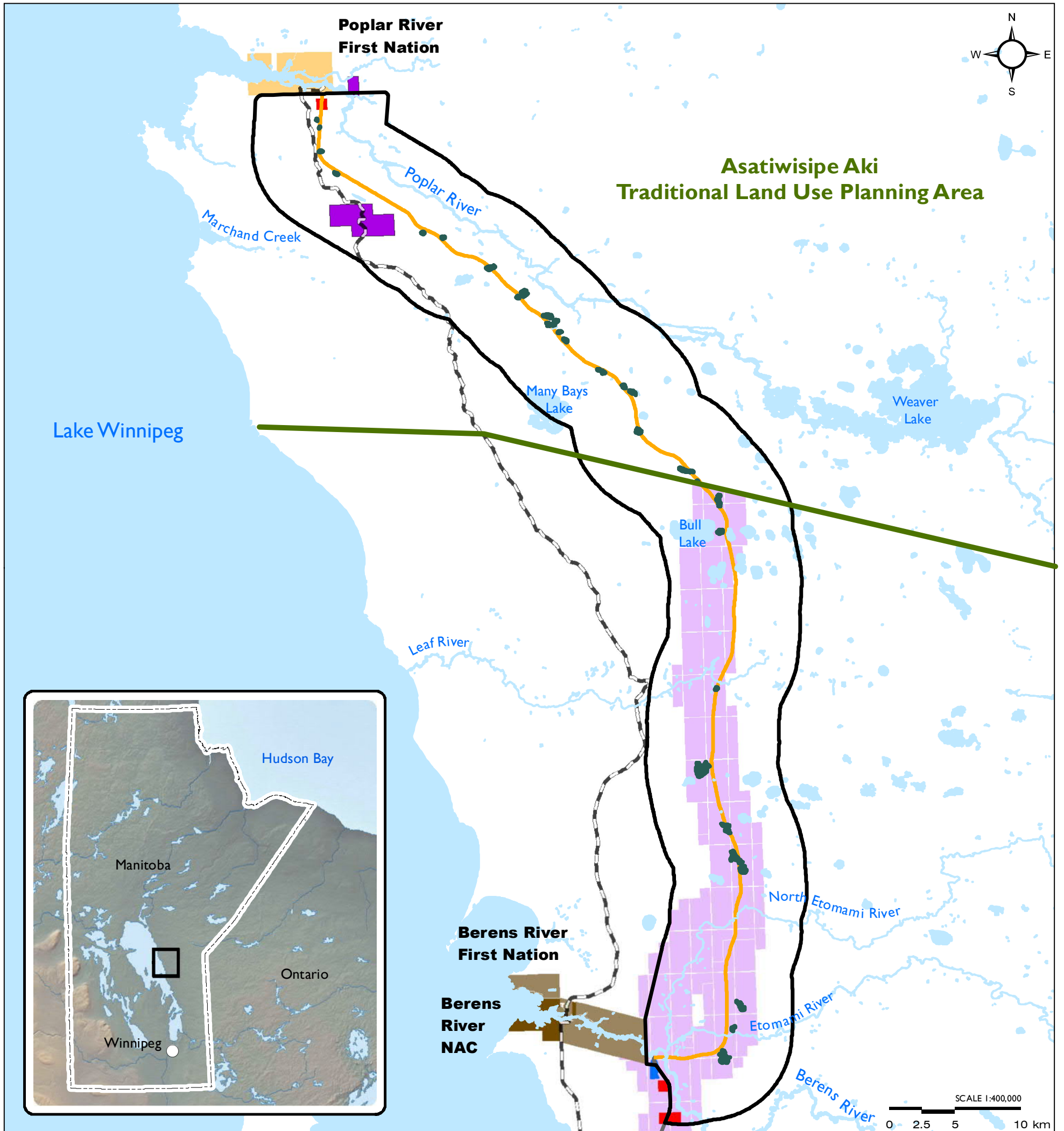
DATE: 4/8/2016





Project 4 - All-Season Road Connecting Berens River to Poplar River First Nation

Figure 7-3
Bedrock Geology
in the Project Area



Project 4 - All-Season Road Connecting Berens River to Poplar River First Nation

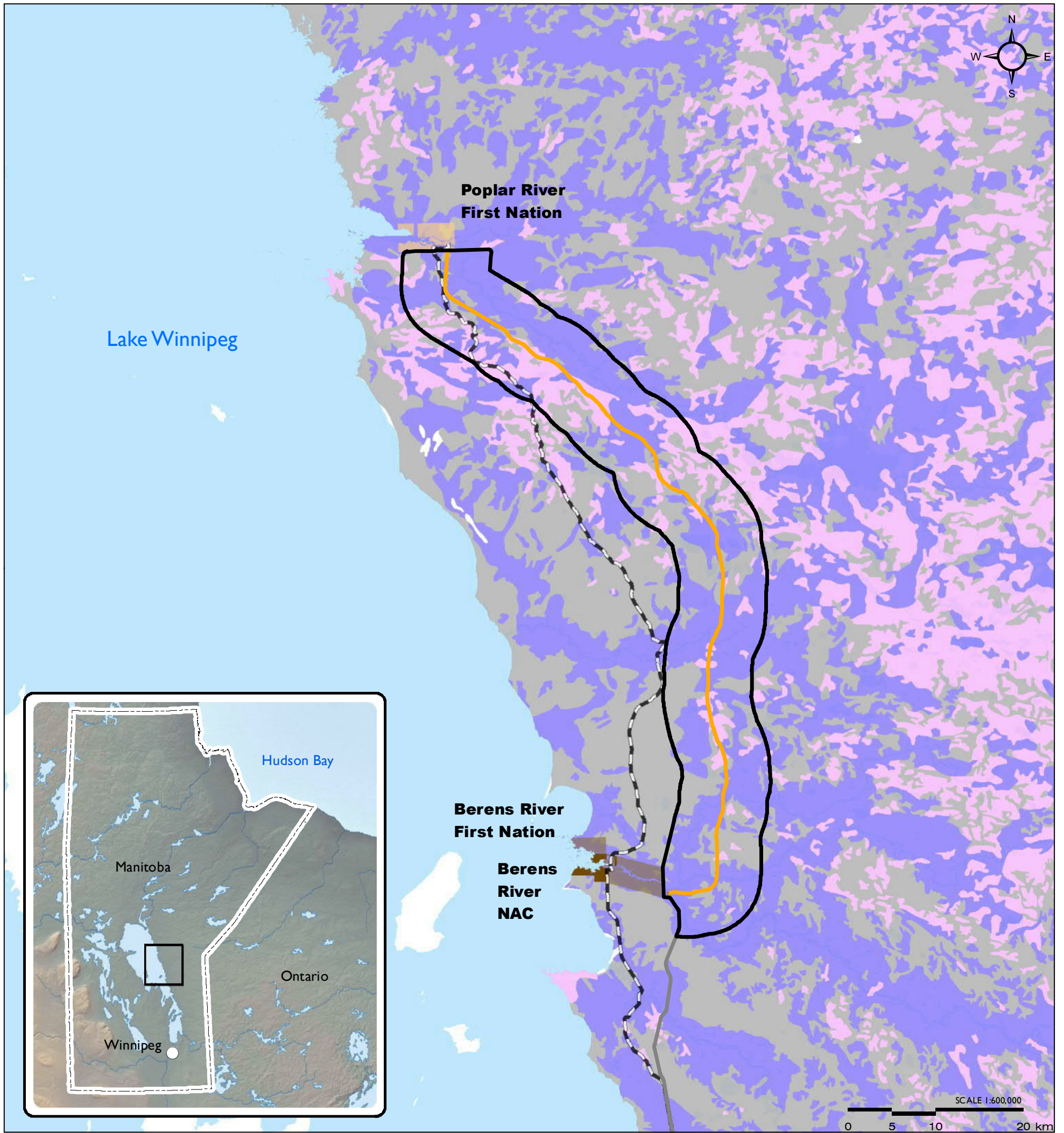
**Figure 7-4
Historical, Current, and Proposed
Quarry Areas in the Local
Assessment Area**

P4 All-Season Road Alignment	Berens River Northern Affairs Community	Casual Quarries Permits (Current)
P1 All-Season Road (South of Berens to PTH 304) - Under Construction	Berens River First Nation Reserve	Quarry Leases (Current)
2013/2014 Manitoba Winter Road	Poplar River First Nation Reserve	Quarry Withdrawals (Current)
Local Assessment Area	P4 Potential Quarry Areas	Quarry Withdrawals (Historical)

Map Drawing Information:
ESRI Base Layers, Province of
Manitoba, CanVec, GeoGratis,
Dillon Consulting Limited

Map Created By: ECH
Map Checked By: MG/PS/LD
Map Projection: NAD 1983 UTM Zone 14N

DATE: 4/8/2016



Project 4 - All-Season Road Connecting Berens River to Poplar River First Nation

Figure 7-5
Surficial Geology in the Project Area

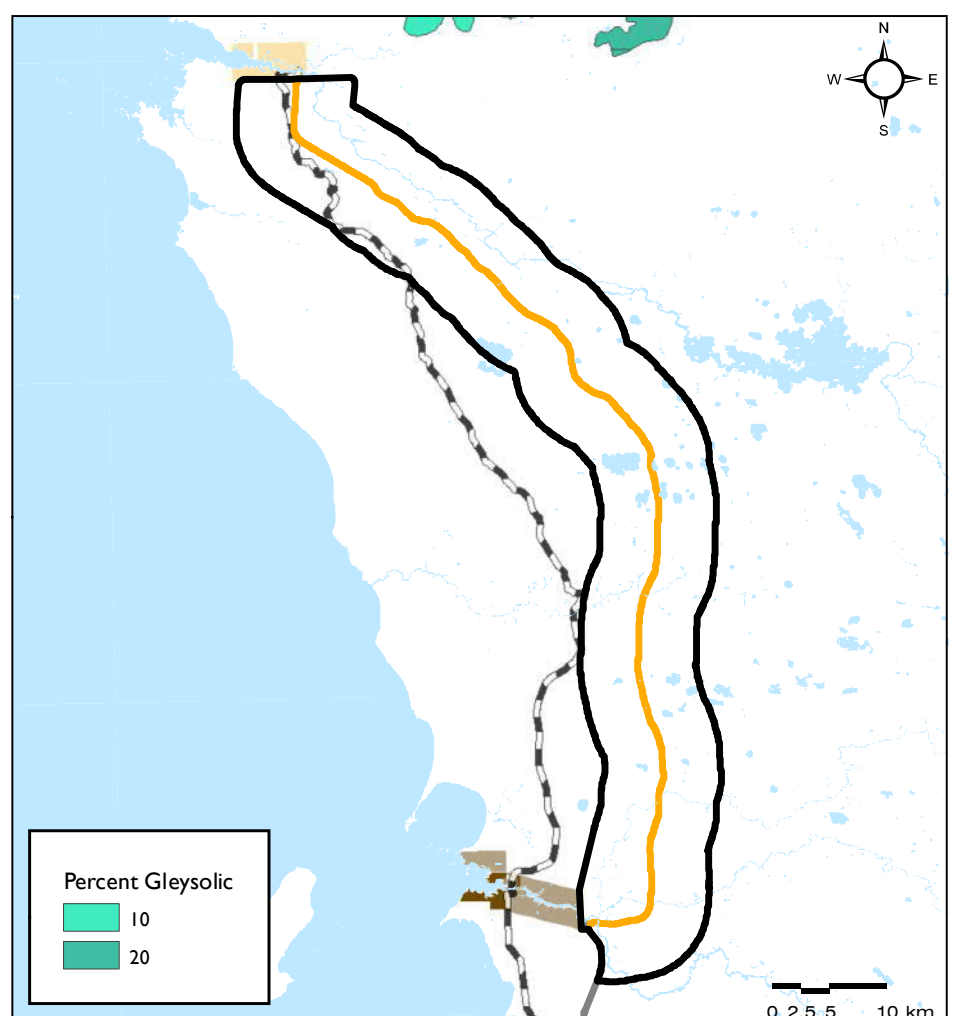
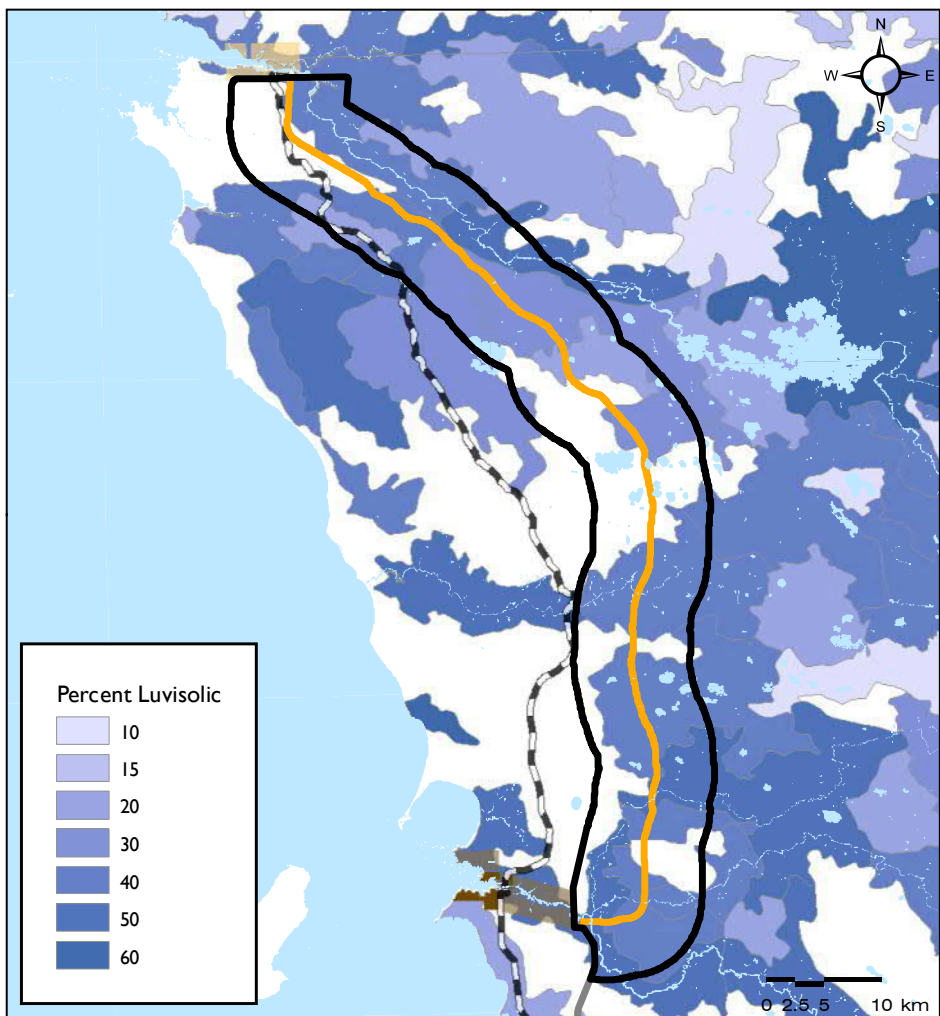
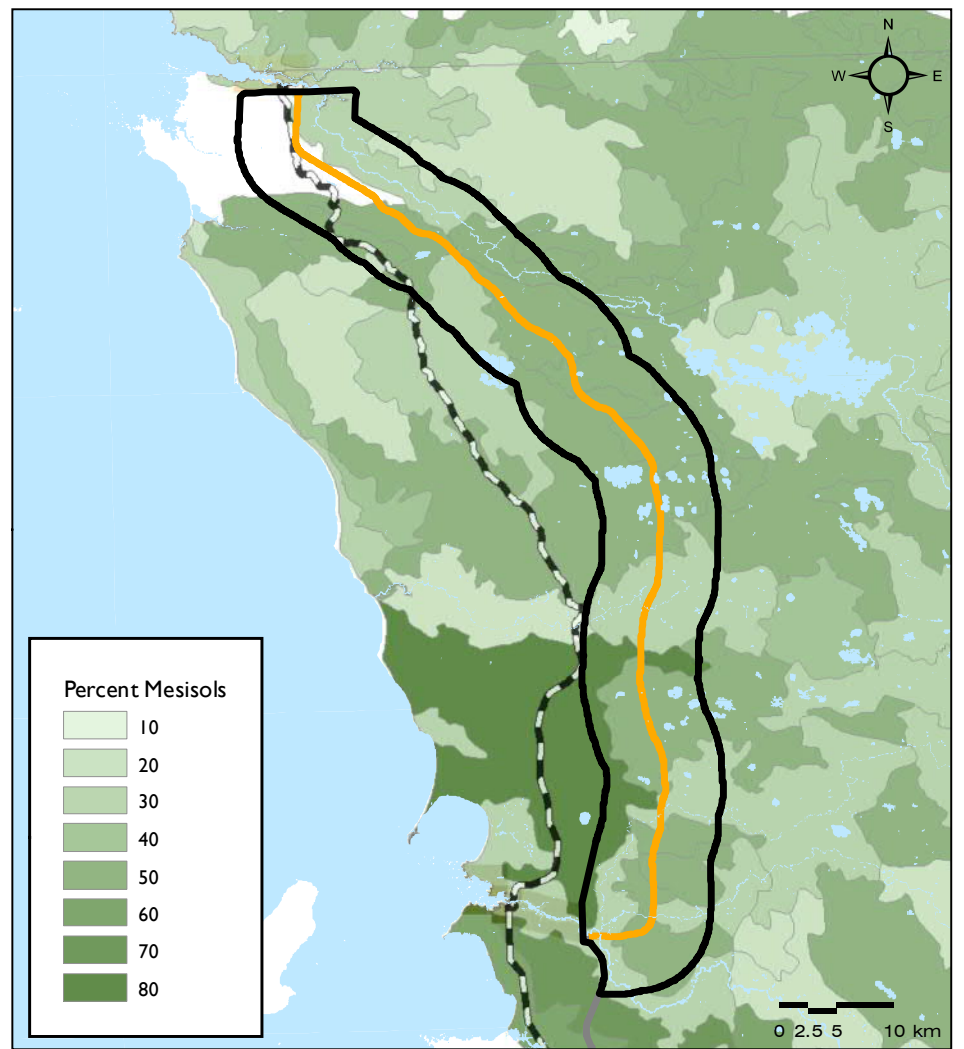
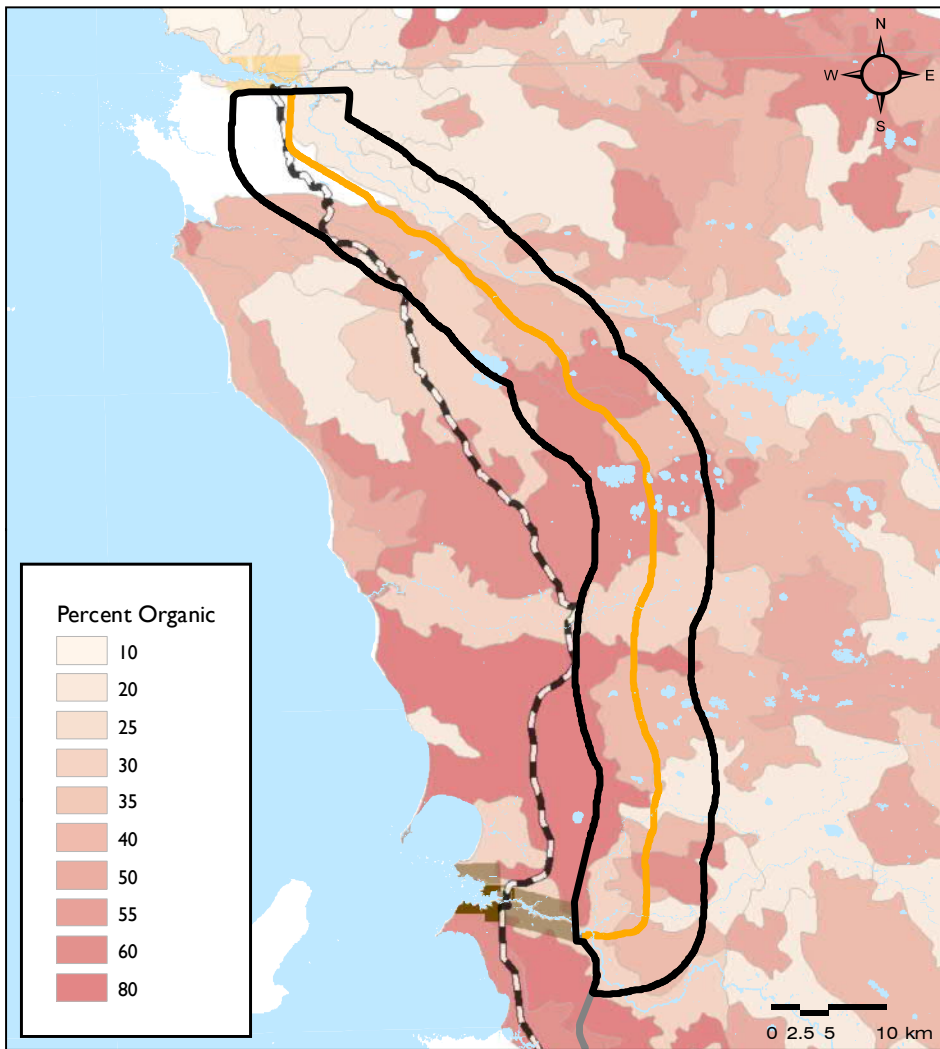
P4 All-Season Road Alignment	Berens River Northern Affairs Community	Surficial Geology Classification:	
PI All-Season Road (South of Berens to PTH 304) - Under Construction	Berens River First Nation Reserve		Organic
2013/2014 Manitoba Winter Road	Poplar River First Nation Reserve		Glaciolacustrine - Silt and Clay
Local Assessment Area		Rock - Precambrian	

Map Drawing Information:
ESRI Base Layers, Province of Manitoba, CanVec, GeoGratis, Dillon Consulting Limited
Manitoba Mineral Resources 2015d

Map Created By: ECH
Map Checked By: MG/PS/LD
Map Projection: NAD 1983 UTM Zone 14N

DATE: 4/8/2016





Project 4 - All-Season Road Connecting Berens River to Poplar River First Nation

Figure 7-6
Soils in the Project Area

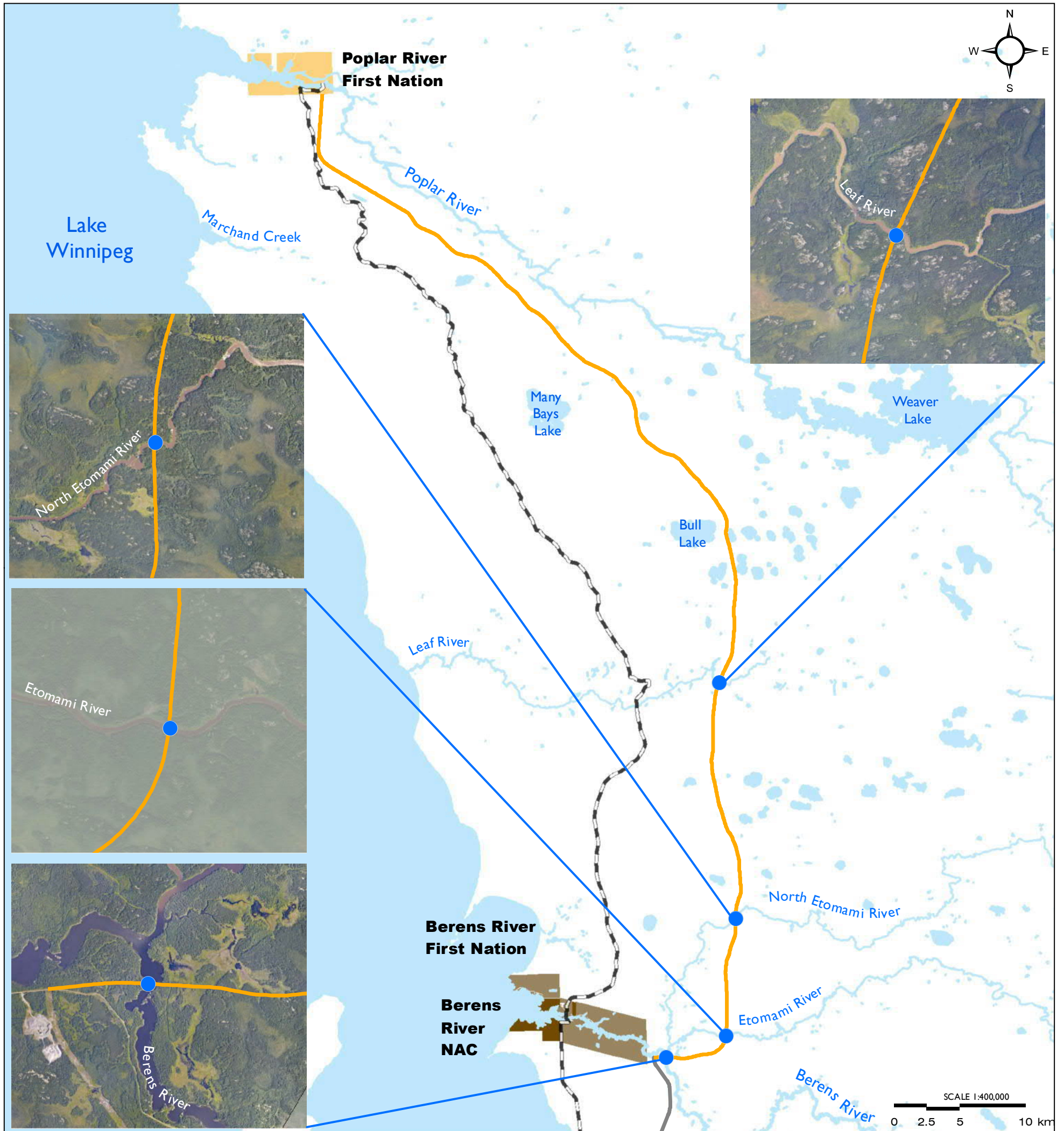
- P4 All-Season Road Alignment
- PI All-Season Road (South of Berens to PTH 304) - Under Construction
- 2013/2014 Manitoba Winter Road
- Local Assessment Area
- Berens River Northern Affairs Community
- Berens River First Nation Reserve
- Poplar River First Nation Reserve

Map Drawing Information:
ESRI Base Layers, Province of
Manitoba, CanVec, GeoGratis,
Dillon Consulting Limited

Map Created By: ECH
Map Checked By: MG/PS/LD
Map Projection: NAD 1983 UTM Zone 14N

DATE: 4/8/2016





Project 4 - All-Season Road Connecting Berens River to Poplar River First Nation

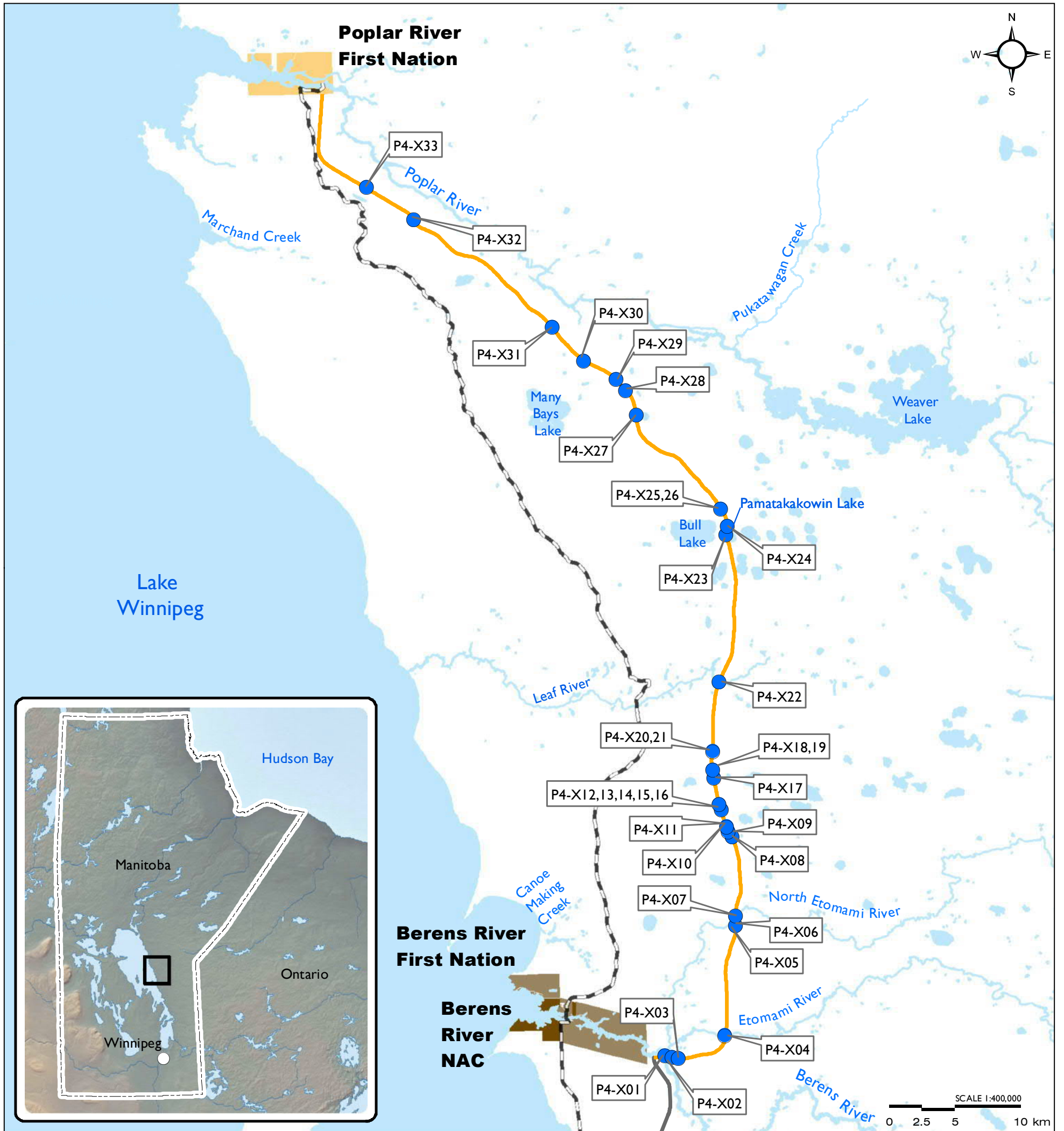
Figure 7-7
Locations of Major Water Crossings

- | | |
|--|---|
| P4 All-Season Road Alignment (April 2015) | Berens River First Nation Reserve |
| PI All-Season Road (South of Berens to PTH 304) - Under Construction | Poplar River First Nation Reserve |
| 2013/2014 Manitoba Winter Road | Berens River Northern Affairs Community |
| Major Crossing - Rivers | |

Map Drawing Information:
ESRI Base Layers, Province of
Manitoba, CanVec, GeoGratis,
Dillon Consulting Limited

Map Created By: ECH
Map Checked By: MG/PS/LD
Map Projection: NAD 1983 UTM Zone 14N

DATE: 4/8/2016



Project 4 - All-Season Road Connecting Berens River to Poplar River First Nation

Figure 8-1
Aquatic Environment Study
Area and Water Crossings

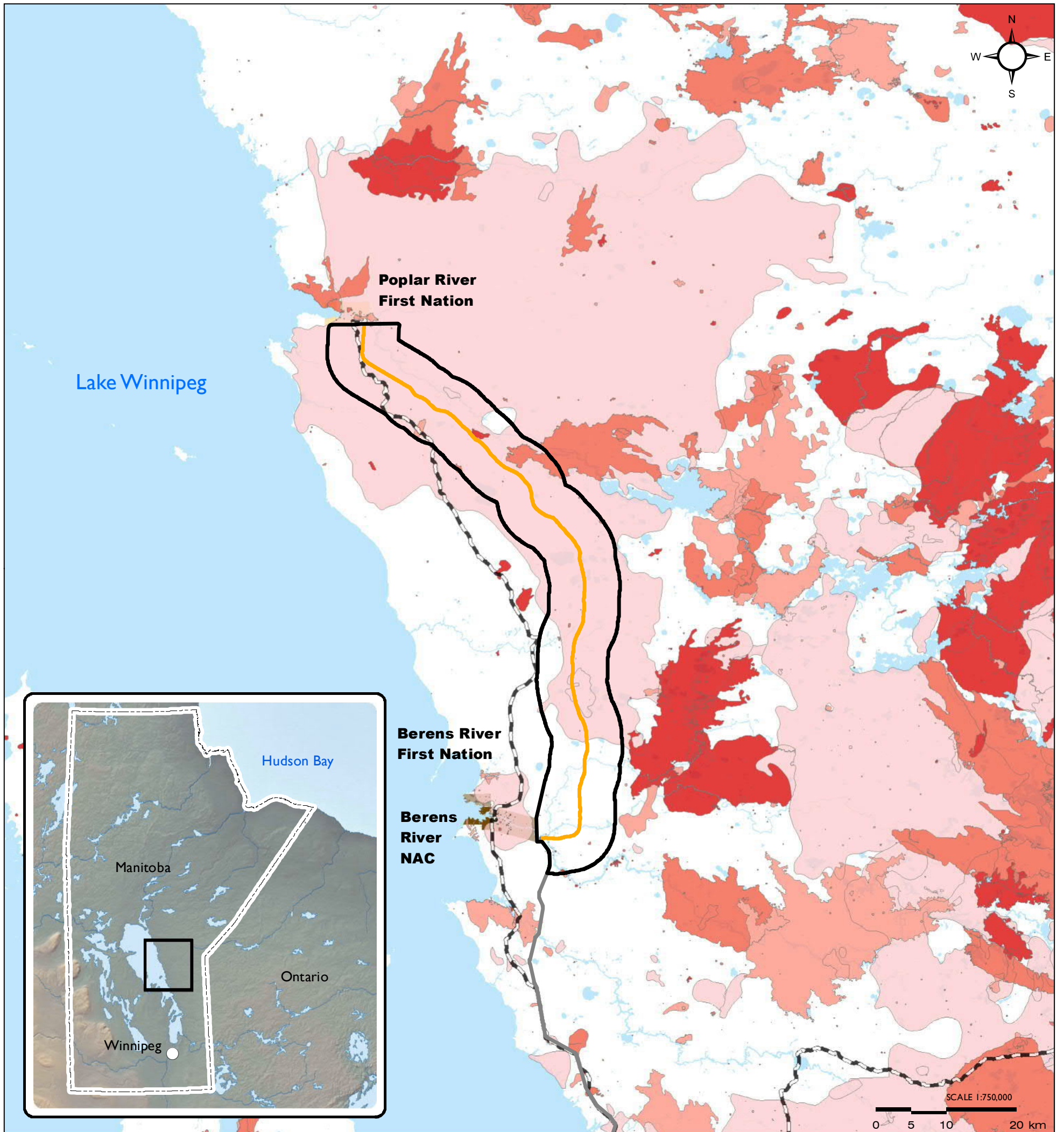
- | | |
|--|---|
| P4 All-Season Road Alignment (October 2015) | Berens River First Nation Reserve |
| Crossing | Poplar River First Nation Reserve |
| P1 All-Season Road (South of Berens to PTH 304) - Under Construction | Berens River Northern Affairs Community |
| 2013/2014 Manitoba Winter Road | |

Map Drawing Information:
 ESRI Base Layers, Province of
 Manitoba, CanVec, GeoGratis,
 Dillon Consulting Limited

Map Created By: ECH
 Map Checked By: MG/PS/LD
 Map Projection: NAD 1983 UTM Zone 14N












DATE: 4/8/2016





Project 4 - All-Season Road Connecting Berens River to Poplar River First Nation

Figure 9-1
Fire History in the Vegetation Regional Assessment Area

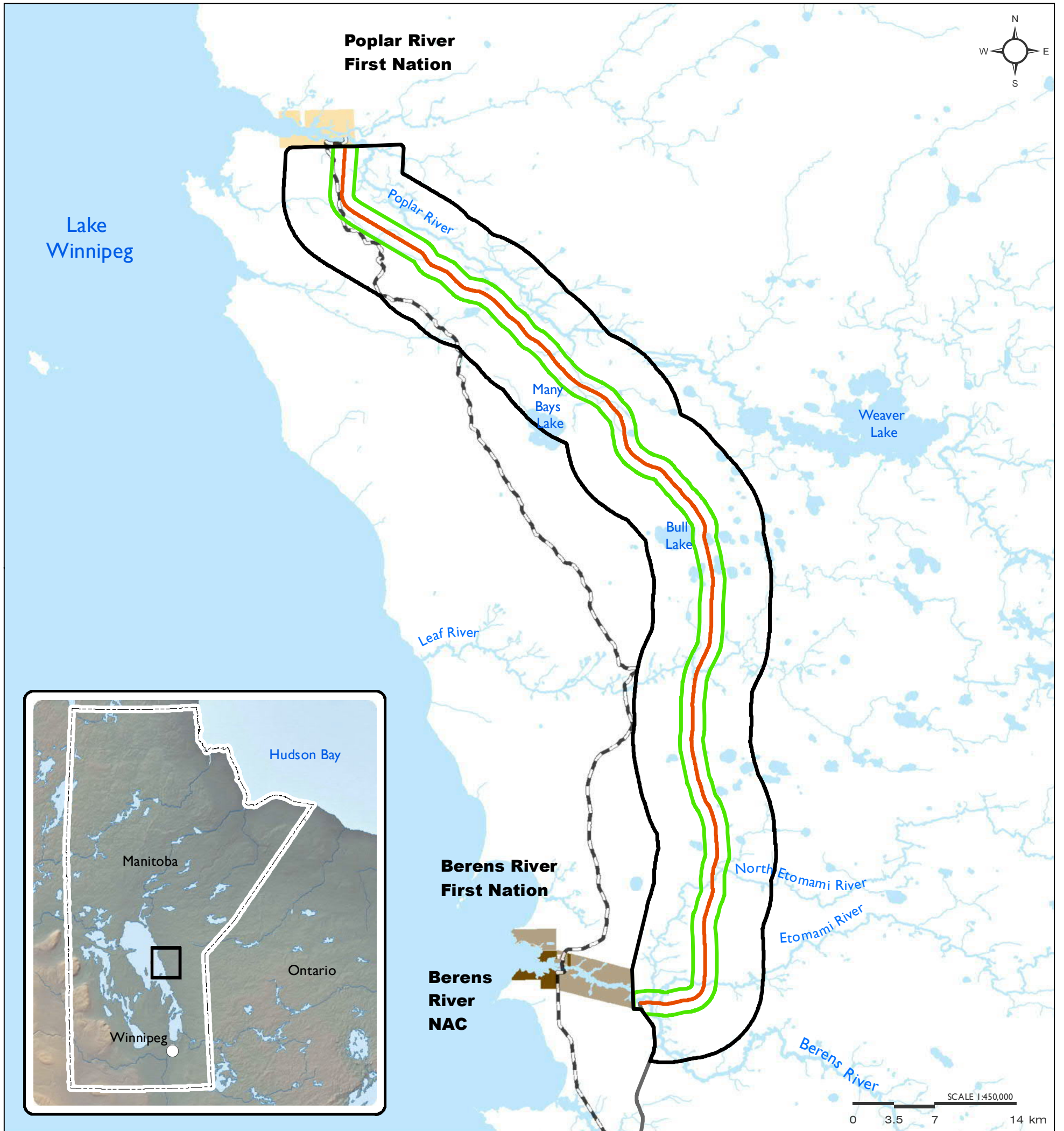
 P4 All-Season Road Alignment	 Berens River First Nation Reserve	 Year of Forest Fire 1928 - 1962
 PI All-Season Road (South of Berens River to PTH 304) - Under Construction	 Poplar River First Nation Reserve	 Year of Forest Fire 1963 - 1984
 2013/2014 Manitoba Winter Road	 Berens River Northern Affairs Community	 Year of Forest Fire 1985 - 1997
 Vegetation Regional Assessment Area		 Year of Forest Fire 1998 - 2013

Map Drawing Information:
 ESRI Base Layers, Province of
 Manitoba, CanVec, GeoGratis,
 Dillon Consulting Limited

Map Created By: ECH
 Map Checked By: MG/PS/LD
 Map Projection: NAD 1983 UTM Zone 14N

DATE: 4/8/2016





Project 4 - All-Season Road Connecting Berens River to Poplar River First Nation

Figure 9-2
Vegetation Assessment Areas

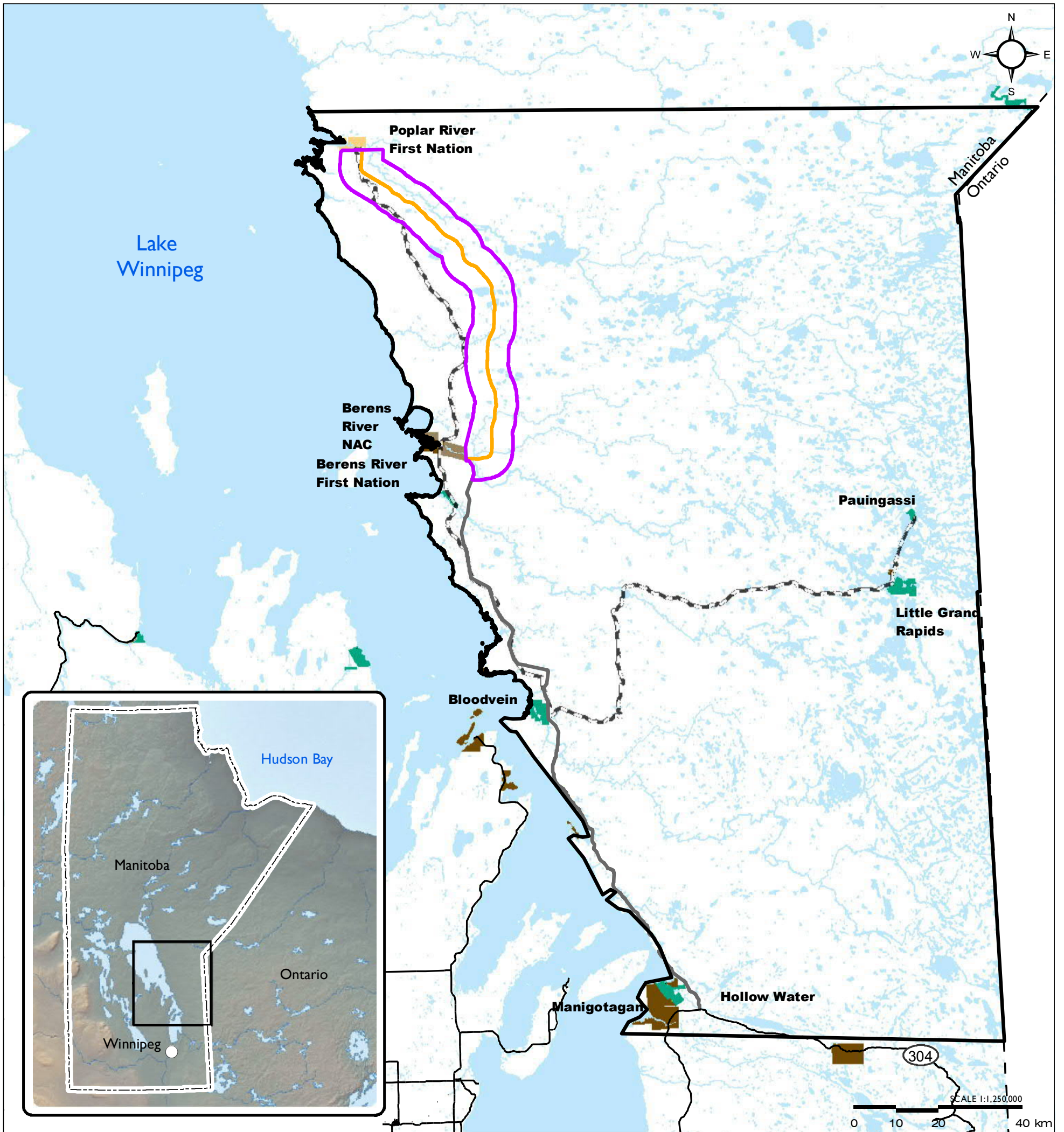
- | | | | |
|--|--|--|---|
| | PI All-Season Road (South of Berens to PTH 304) - Under Construction | | Project Footprint* |
| | 2013/2014 Manitoba Winter Road | | Berens River First Nation Reserve |
| | Vegetation Regional Assessment Area | | Poplar River First Nation Reserve |
| | Vegetation Local Assessment Area | | Berens River Northern Affairs Community |

*This area includes the Project all-season roadbed, cleared right-of-way and all potential quarry sites for impact assessment purposes

Map Drawing Information:
ESRI Base Layers, Province of Manitoba, CanVec, GeoGratis, Dillon Consulting Limited

Map Created By: ECH
Map Checked By: MG/PS/LD
Map Projection: NAD 1983 UTM Zone 14N

DATE: 4/8/2016



Project 4 - All-Season Road Connecting Berens River to Poplar River First Nation

Figure 9-3
Wildlife Assessment Areas

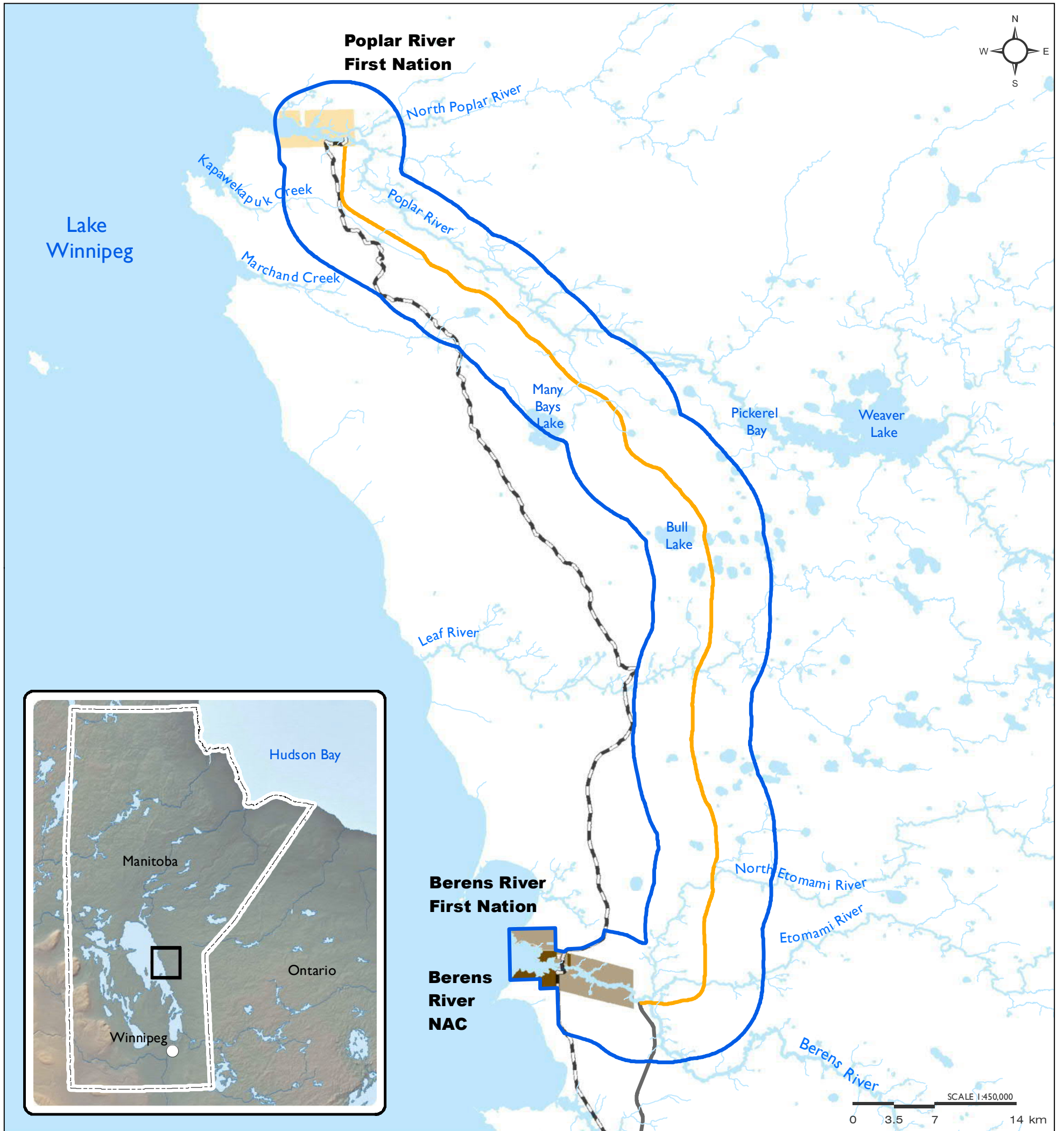
- | | | |
|--|-----------------------------------|---------------------|
| P4 All-Season Road Alignment | Wildlife Local Assessment Area | Other First Nations |
| PI All-Season Road (South of Berens to PTH 304) - Under Construction | Northern Affairs Community | |
| 2013/2014 Manitoba Winter Road | Berens River First Nation Reserve | |
| Wildlife Regional Assessment Area | Poplar River First Nation Reserve | |

Map Drawing Information:
ESRI Base Layers, Province of
Manitoba, CanVec, GeoGratis,
Dillon Consulting Limited

Map Created By: ECH
Map Checked By: MG/PS/LD
Map Projection: NAD 1983 UTM Zone 14N








DATE: 4/9/2016





Project 4 - All-Season Road Connecting Berens River to Poplar River First Nation

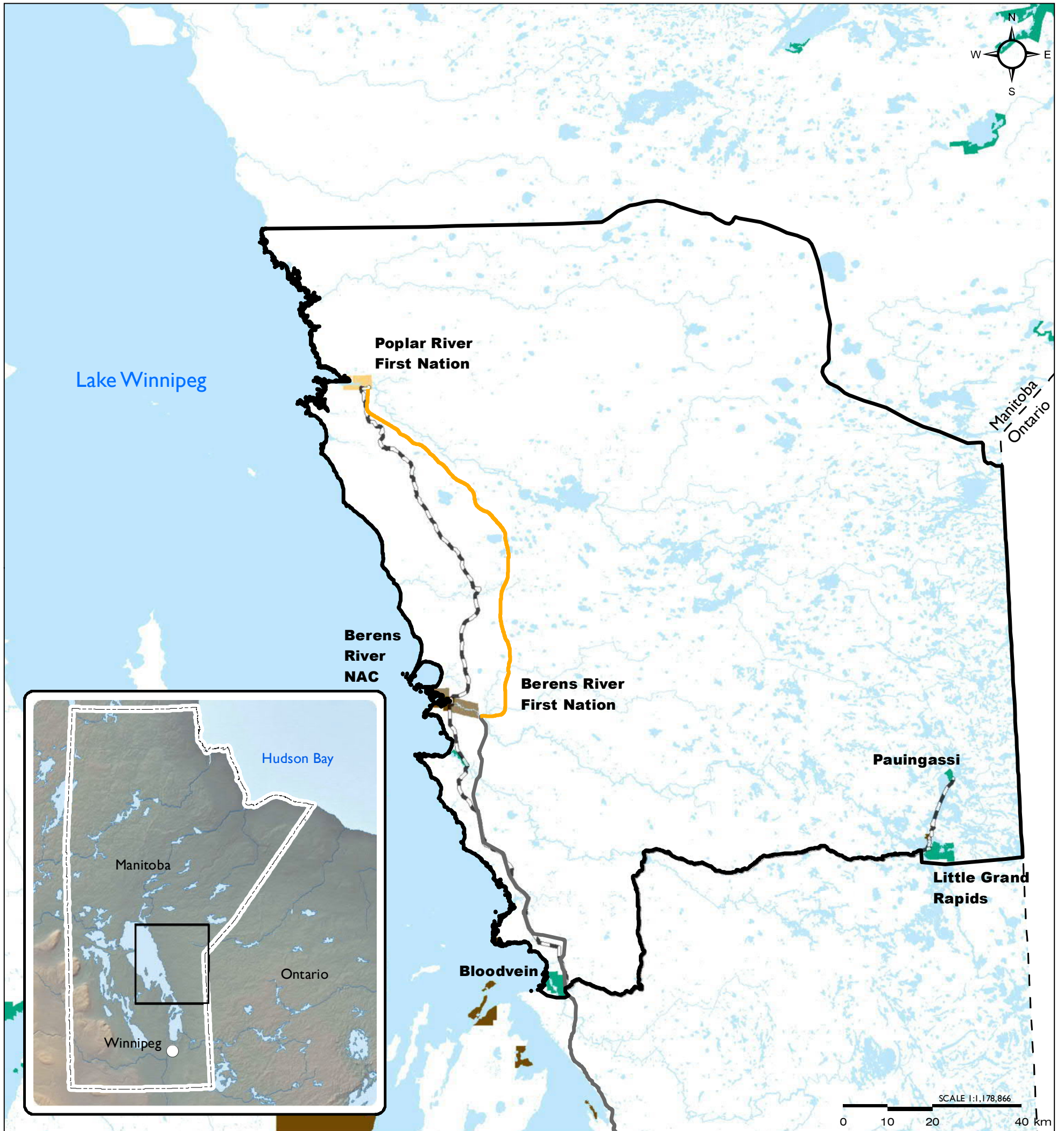
Figure 10-1
Socio-Economic Local Assessment Area

- | | |
|--|---|
|  P4 All-Season Road Alignment |  Berens River First Nation Reserve |
|  PI All-Season Road (South of Berens to PTH 304) - Under Construction |  Poplar River First Nation Reserve |
|  2013/2014 Manitoba Winter Road |  Berens River Northern Affairs Community |
|  Socio-Economic Local Assessment Area | |

Map Drawing Information:
ESRI Base Layers, Province of
Manitoba, CanVec, GeoGratis,
Dillon Consulting Limited

Map Created By: ECH
Map Checked By: MG/PS/LD
Map Projection: NAD 1983 UTM Zone 14N

DATE: 4/8/2016



Project 4 - All-Season Road Connecting Berens River to Poplar River First Nation

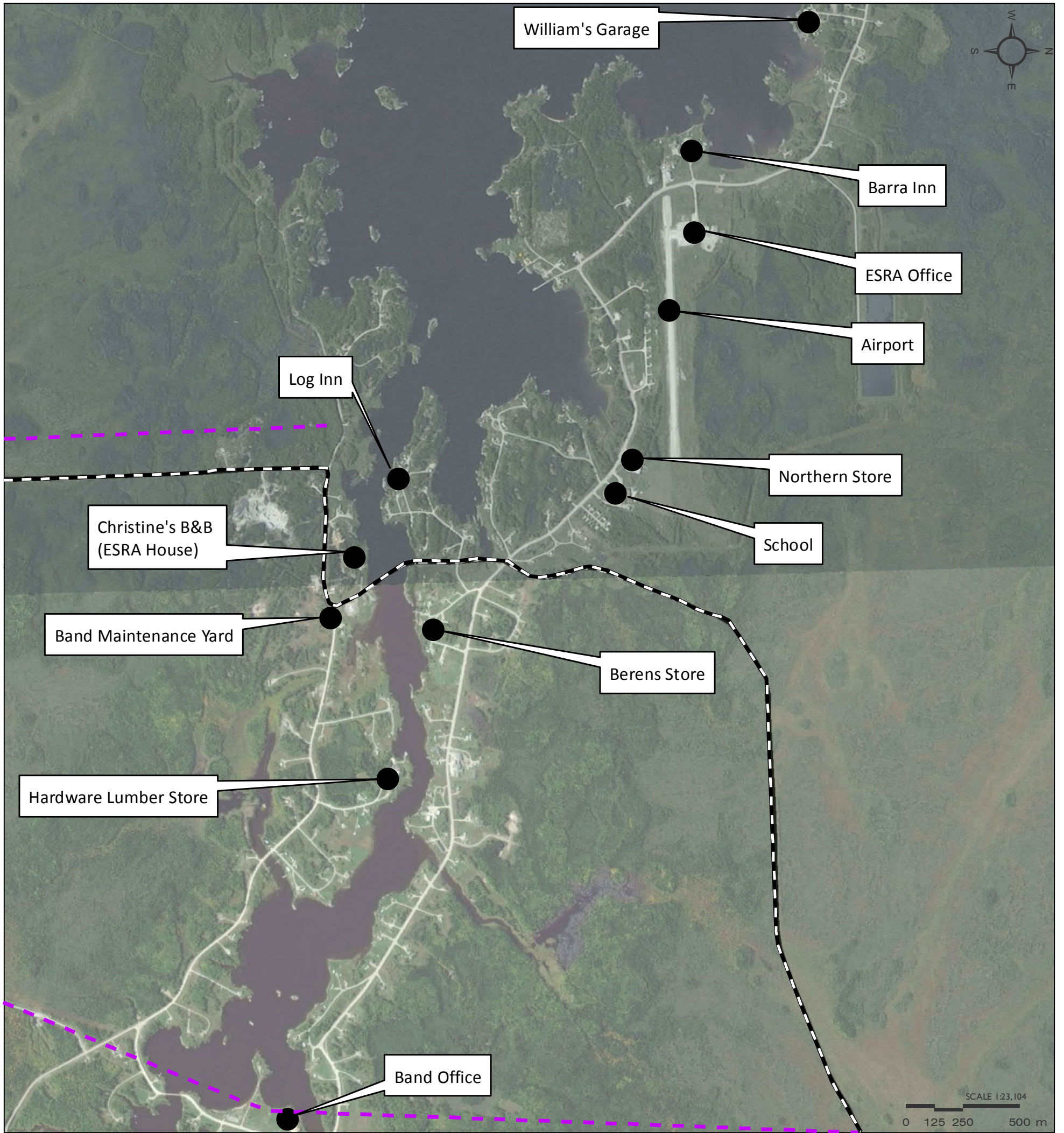
Figure 10-2
Socio-Economic Regional Assessment Area

- | | |
|--|---|
|  P4 All-Season Road Alignment |  Northern Affairs Community |
|  PI All-Season Road (South of Berens River to PTH 304) - Under Construction |  Berens River First Nation Reserve |
|  2013/2014 Manitoba Winter Road |  Poplar River First Nation Reserve |
|  Socio-Economic Regional Assessment Area |  Other First Nations |

Map Drawing Information:
ESRI Base Layers, Province of
Manitoba, CanVec, GeoGratis,
Dillon Consulting Limited

Map Created By: ECH
Map Checked By: MG/PS/LD
Map Projection: NAD 1983 UTM Zone 14N

DATE: 4/8/2016



Project 4 - All-Season Road Connecting Berens River to Poplar River First Nation

Figure 10-3
Berens River Businesses

— 2013/2014 Manitoba Winter Road

- - Existing Transmission Line

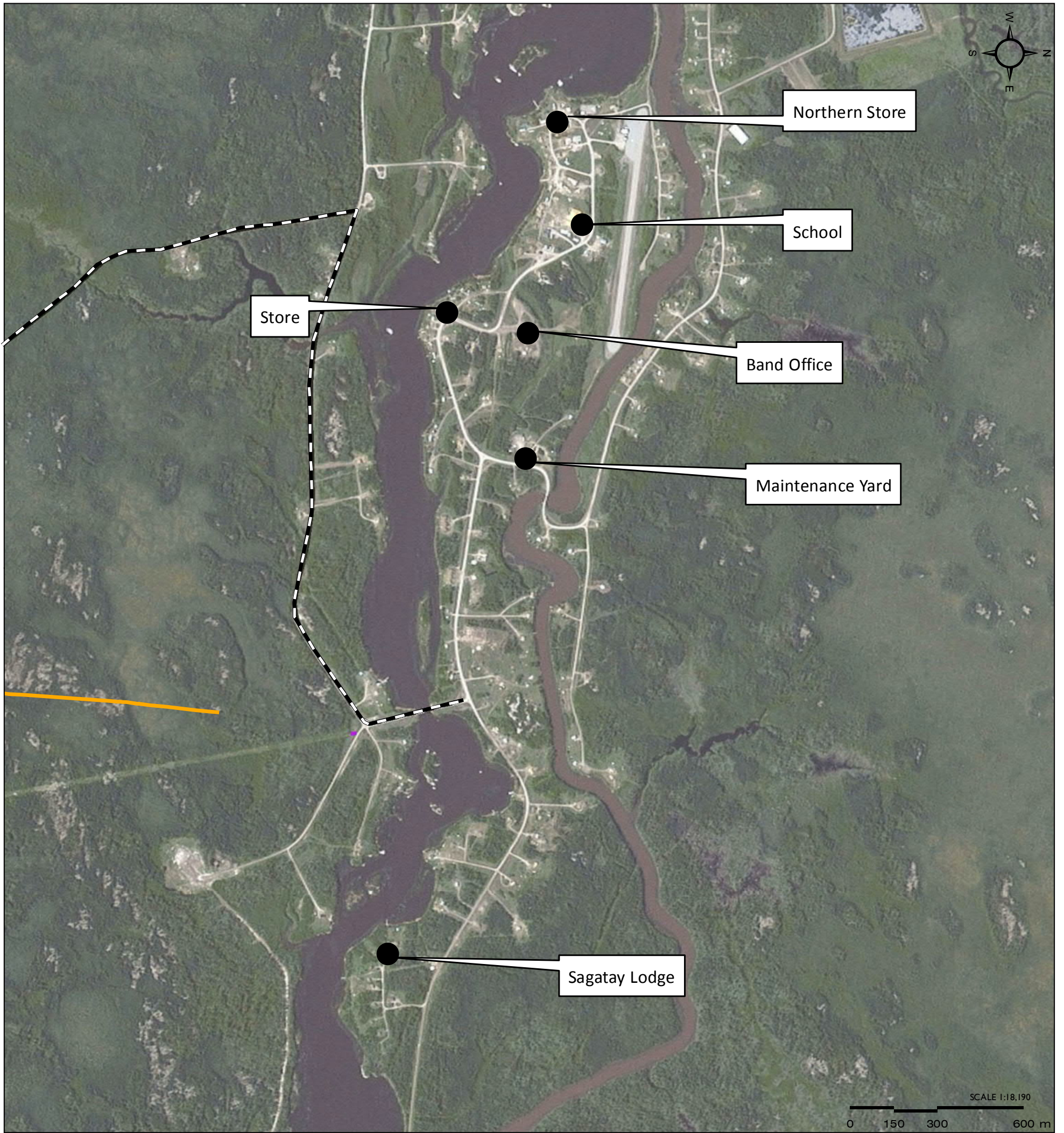
● Berens River Businesses

Map Drawing Information:
ESRI Base Layers, Province of
Manitoba, CanVec, GeoGratis,
Dillon Consulting Limited

Map Created By: ECH
Map Checked By: MG/PS/LD
Map Projection: NAD 1983 UTM Zone 14N

DATE: 4/8/2016





Project 4 - All-Season Road Connecting Berens River to Poplar River First Nation

Figure 10-4
Poplar River Businesses

- P4 All-Season Road Alignment

- 2013/2014 Manitoba Winter Road

- Existing Transmission Line

- Poplar River Businesses

Map Drawing Information:
ESRI Base Layers, Province of
Manitoba, CanVec, GeoGratis,
Dillon Consulting Limited

Map Created By: ECH
Map Checked By: MG/PS/LD
Map Projection: NAD 1983 UTM Zone 14N

DATE: 4/8/2016

