

## **Annex A2:** Round 4 APEP Materials

**Annex A2-1:**  
Poster – Berens River First Nation  
Community Meeting (Round 4)

---

# BERENS RIVER TO POPLAR RIVER ALL-SEASON ROAD

## COMMUNITY MEETING

The East Side Road Authority (ESRA) is hosting a Community Meeting to discuss the proposed All-Season Road project between Berens River First Nation and Poplar River First Nation.



**Poplar River School**

**Thursday, April 9, 2015**

**Presentation 6:00pm**

**Discussion until 8:30pm**



The Community Meeting is an opportunity to discuss the proposed all-season road project and discuss what you think is important to consider in the Environmental Assessment. We want to hear your views on this proposed All-Season Road.

For more information on the Community Meeting or the East Side Transportation Initiative, please visit

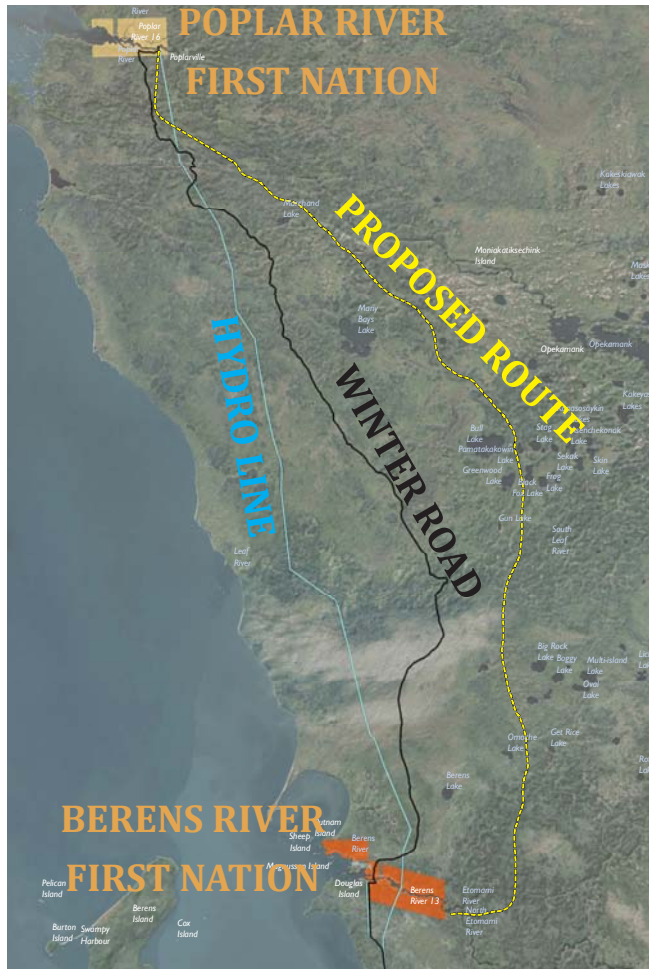
[www.eastsideroadauthority.mb.ca](http://www.eastsideroadauthority.mb.ca) 1-866-356-6355.



# BERENS RIVER TO POPLAR RIVER ALL-SEASON ROAD

## COMMUNITY MEETING

The East Side Road Authority (ESRA) is hosting a Community Meeting to discuss the proposed All-Season Road project between Berens River First Nation and Poplar River First Nation.



## Berens River

Wednesday, April 15, 2015

NAC Hall 11:00am - 1:00pm

School 6:00pm - 8:30pm



The Community Meeting is an opportunity to discuss the proposed all-season road project and discuss what you think is important to consider in the Environmental Assessment. We want to hear your views on this proposed All-Season Road.

For more information on the Community Meeting or the East Side Transportation Initiative, please visit

[www.eastsideroadauthority.mb.ca](http://www.eastsideroadauthority.mb.ca) 1-866-356-6355.



**Annex A2-2:**  
Handout – Berens River First Nation  
Community Meeting (Round 4)

---

# BERENS RIVER TO POPLAR RIVER ALL-SEASON ROAD

## EAST SIDE TRANSPORTATION INITIATIVE

The East Side Transportation Initiative is a provincial initiative to provide improved, safe and more reliable transportation service for remote and isolated communities on the east side of Lake Winnipeg.

The East Side Road Authority (ESRA) is the provincial agency responsible for implementing the planning, construction and maintenance of an all-season road on the east side of Lake Winnipeg.

Key objectives of the East Side Transportation Initiative are:

1. Construction of an all-season road network on the east side of Lake Winnipeg

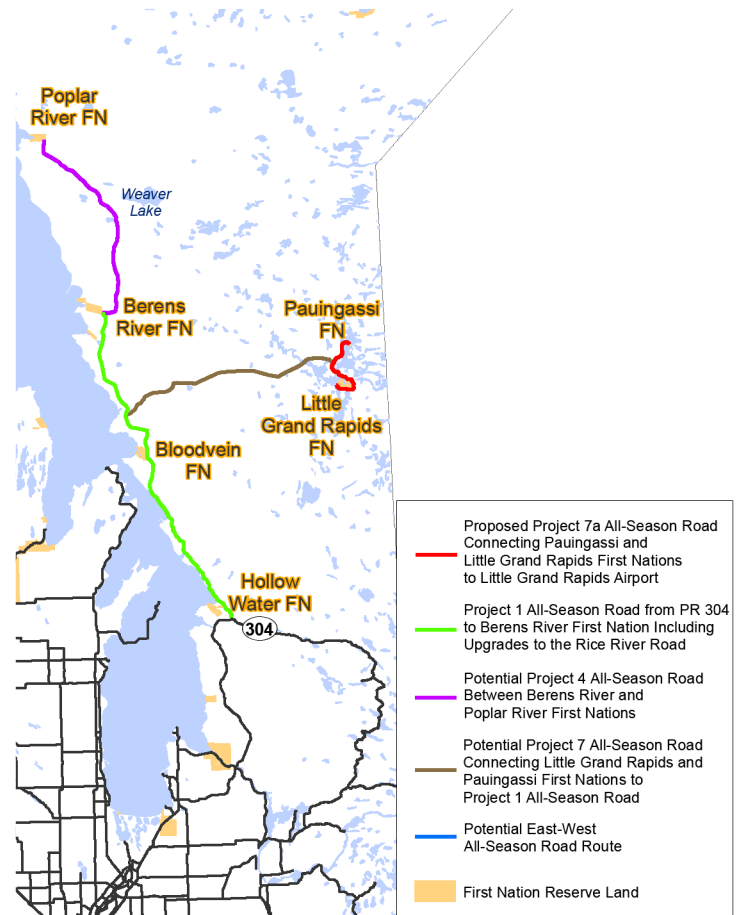
Design and construction has begun on some segments of the all-season road and environmental authorizations and approvals from federal and provincial regulators are being sought for other segments.

2. Stimulating community economic development

A key focus is to ensure that local residents participate in, and benefit from, the construction of the all-season road through jobs, training and economic development opportunities.

Currently, ESRA is working on the Environmental Impact Assessment (EIA) for the Berens River to Poplar River All-Season Road.

The proposed 94 km road would connect Berens River First Nation and Poplar River First Nation to the wider provincial highway system. Through the EIA, the ESRA project team is meeting with community members and stakeholders to refine road alignments, receive input on valued environmental components, community heritage and cultural locations, and discuss how to minimize or avoid any potential impacts that the road may have on the communities and their interests.



# BERENS RIVER TO POPLAR RIVER ALL-SEASON ROAD

## PROJECT BENEFITS

The ESRA East Side Transportation Initiative has many community and economic development benefits including:

- Providing alternative transportation to the increasingly unreliable winter road network
- Enhancing access to emergency, health, and social services
- Reducing transportation costs for goods and services
- Creating construction employment, training, and economic opportunities
- Improving linkages between isolated and remote communities
- Enhancing opportunities for local sustainable economic development



ESRA will invest approximately \$315 million (35% of the road construction budget) over the next fifteen years into jobs, training and economic development opportunities for local residents.

ESRA is entering into Community Benefit Agreements (CBAs) with First Nation communities located in the vicinity of the proposed all-season road, with agreements signed with Berens River First Nation in 2009, and Poplar River First Nation in 2010. The purpose of these agreements is to provide jobs, training and economic opportunities related to road construction and maintenance for local residents. In addition, there are local hiring and procurement requirements in construction tenders.

**Annex A2-3:**  
Comment Sheet – Berens River First  
Nation Community Meeting (Round 4)

---



# BERENS RIVER TO POPLAR RIVER ALL-SEASON ROAD

Your feedback and input on the All-Season Road between Berens River to Poplar River is important to us. What is important to you? Do you have any comments, ideas, or information you would like ESRA to consider?

**YOUR FEEDBACK**

---

---

---

---

---

---

---

---

---

---

---

---

---

---

---

---

---

---

---

---

---

---

---

---

---

---

---

---

Would you like us to contact you?

Name:

Contact info (email / phone number):

If you have any further questions or comments, please do not hesitate to contact us:



### CONTACT INFORMATION

**The East Side Road Authority**  
200 – 155 Carlton Street, Winnipeg, Manitoba, R3C 3H8  
Phone: 204-945-4900 in Winnipeg  
Toll free: 1-866-356-6355 • Fax: 204-948-2462 in Winnipeg  
Email: eastside@gov.mb.ca • www.eastsideroadauthority.mb.ca



**Annex A2-4:**  
Presentation – Berens River First Nation  
Community Meeting (Round 4)

---



# **EAST SIDE TRANSPORTATION INITIATIVE**

## **Berens River to Poplar River FN Road Network**



### **The Environmental Assessment**

**Presentation to  
Berens River First Nation**

April 30, 2015

## Why are we here?

### We are here today to:

- Provide information about the road project
- Review the options that have been considered
- Hear from you about what you value, so that it can be considered in the environmental assessment (EA) and addressed in the project design.



## EAST SIDE TRANSPORTATION INITIATIVE

- Provide alternative transportation to the increasingly unreliable winter road network
- Reduce transportation costs for goods and services
- Improve linkages between isolated and remote communities
- Enhance access to emergency, health & social services
- Construction employment, training & economic opportunities
- Enhanced opportunities for local sustainable economic development



1. Construction of an all-season road from Provincial Road PR 304 to Berens River First Nation

*Status: The project has received environmental authorizations and approvals from federal and provincial regulators and construction is underway on the 156 km all-season road from PR 304 to Berens River First Nation.*

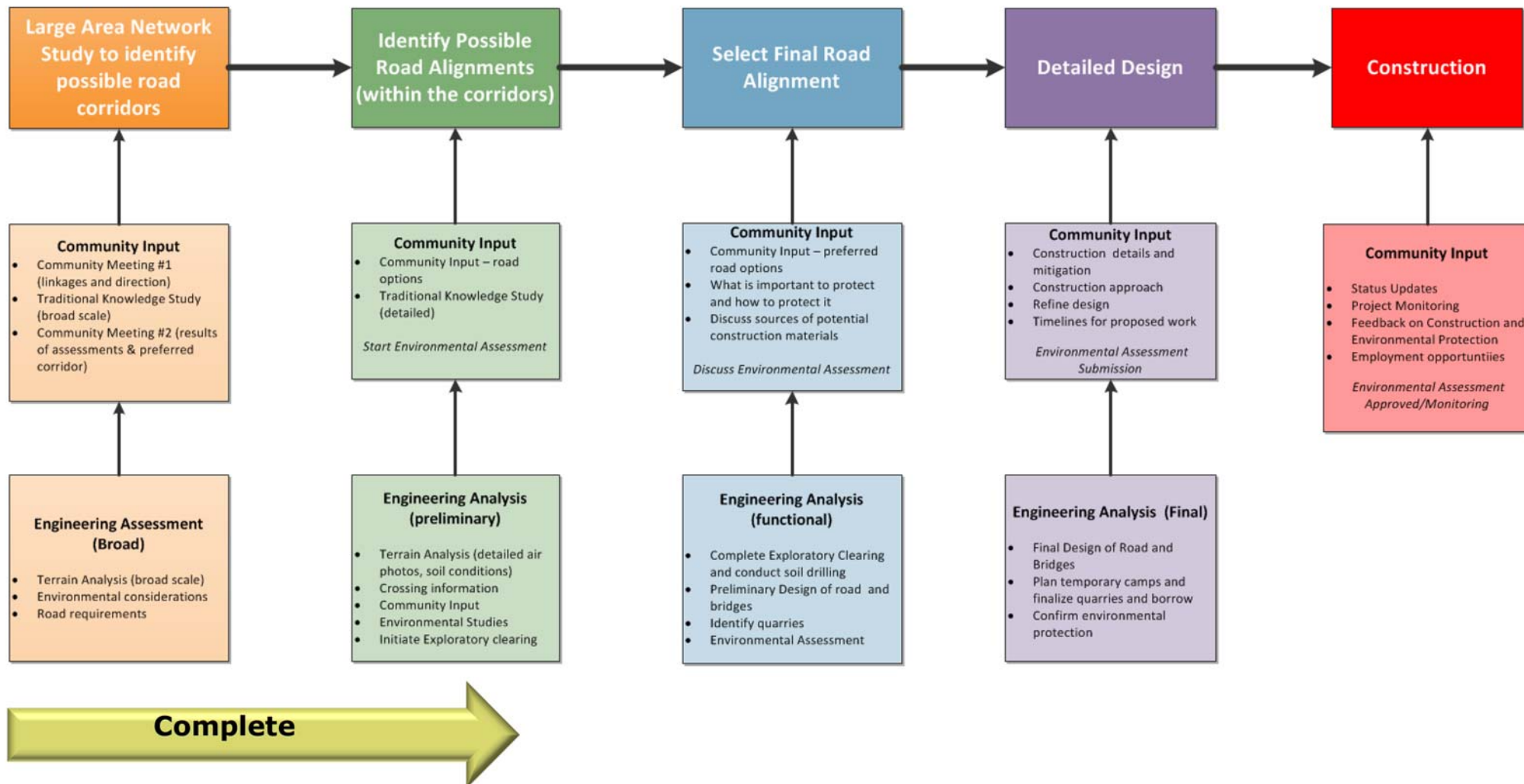
2. East Side Large Area Transportation Network Study

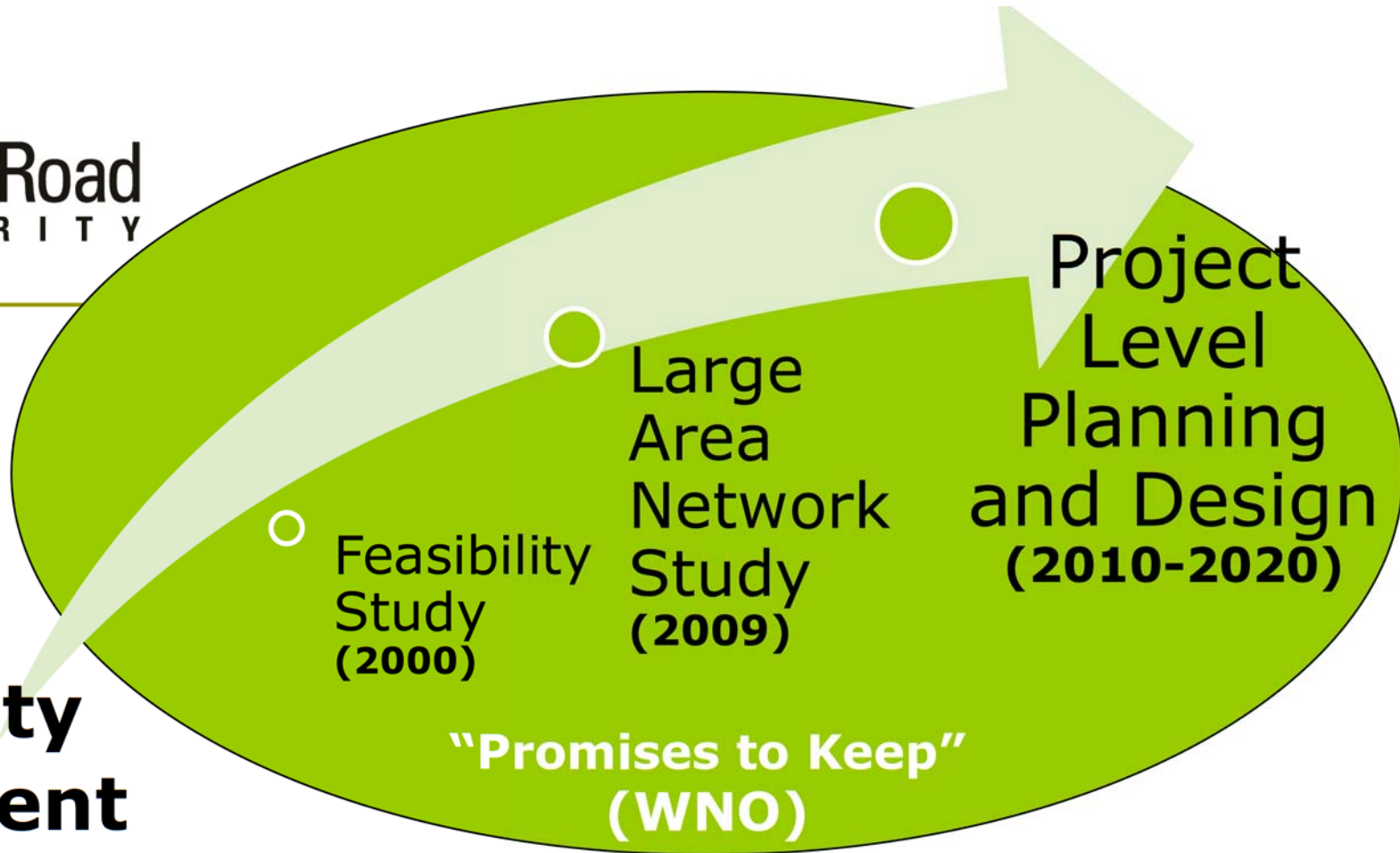
*Status: Interim winter road enhancements are underway with planning and environmental assessments to support the construction of pioneer and all season roads occurring in prioritized locations.*

3. Community Economic Development

*Status: Community benefits agreements are in place with 13 east side communities including Poplar River and Berens River.*

# Steps to Select, Design & Construct an All Season Road





## Community Engagement

- Community input is key to developing a good project
- ESRA will meet and discuss the project:
  - environmental site conditions;
  - potential impacts;
  - measures to avoid, reduce or eliminate impacts; and
  - construction employment and training.



## Prior Community Discussions & Agreements

- Since 2008, ESRA has met with the Berens River community and leadership to discuss the project and select the best road location
  - Community Meetings
    - May 5, 2009
    - July 6, 2009
    - June 13, 2010
  - Elders Meeting
    - April 22, 2015
  - Annual project update posters in the community



## Prior Community Discussions & Agreements

- ❑ Past discussions resulted in changes in the potential route away from sensitive areas, based on community concerns
- ❑ Memorandum of Understanding Signed June 2, 2009
- ❑ Community Benefits Agreement Signed August 19, 2009 and July 25, 2013



## Description of Project

A) 94 km of All Season Road joining  
Poplar River to Berens River

Includes:

4 major water crossings:

- Leaf River
- North Etomami River
- Etomami River
- Berens River

6 possible minor crossings or  
culverts, and

Equalization culverts



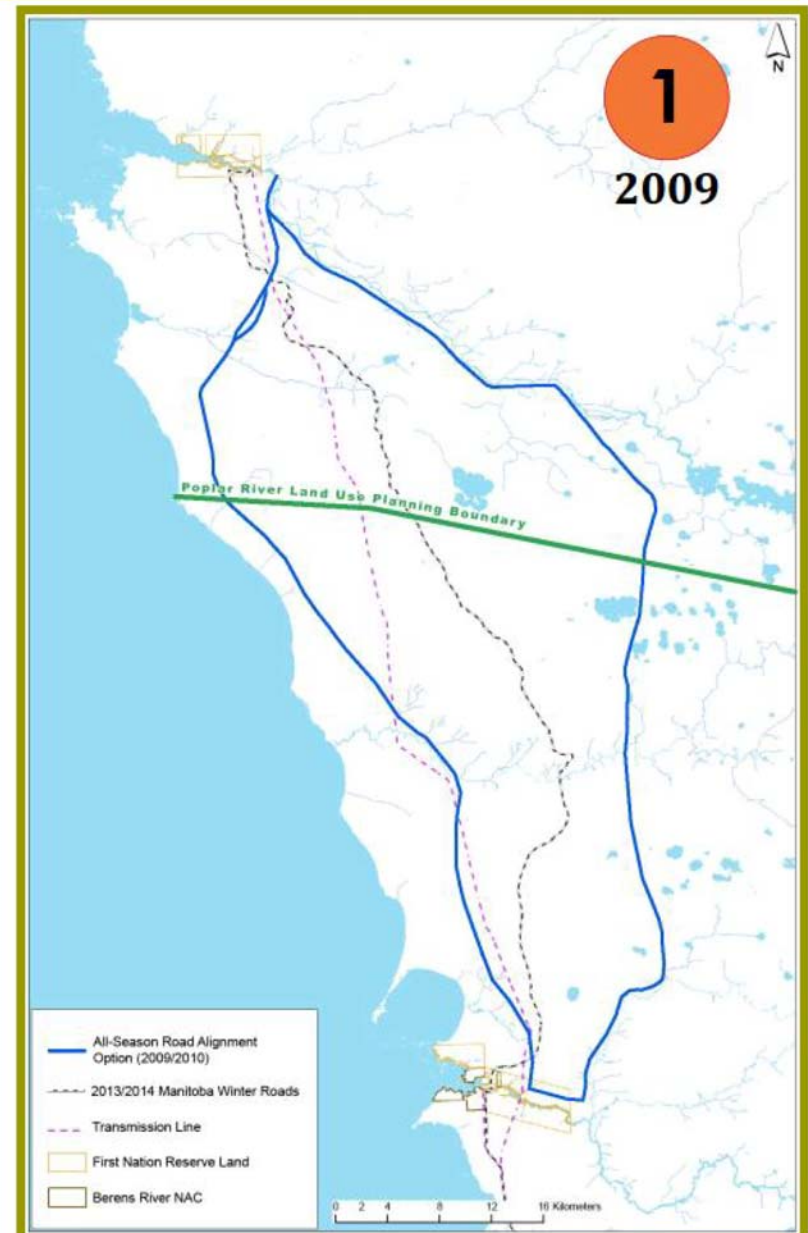
# Road Route Refinements (overall)

- Original route concept has been refined several times based on:
  - community feedback and knowledge of the land
  - results of traditional knowledge, archeology, soils and wildlife investigations



# Evolution of Road Route Refinements

- Two route options originally identified –
  - Coastal Route
  - Inland Route
- Considered topographic, physiographic, geological, social-economic and natural environmental information
- Moved route from muskeg areas near Lake Winnipeg further inland to suitable terrain for constructability



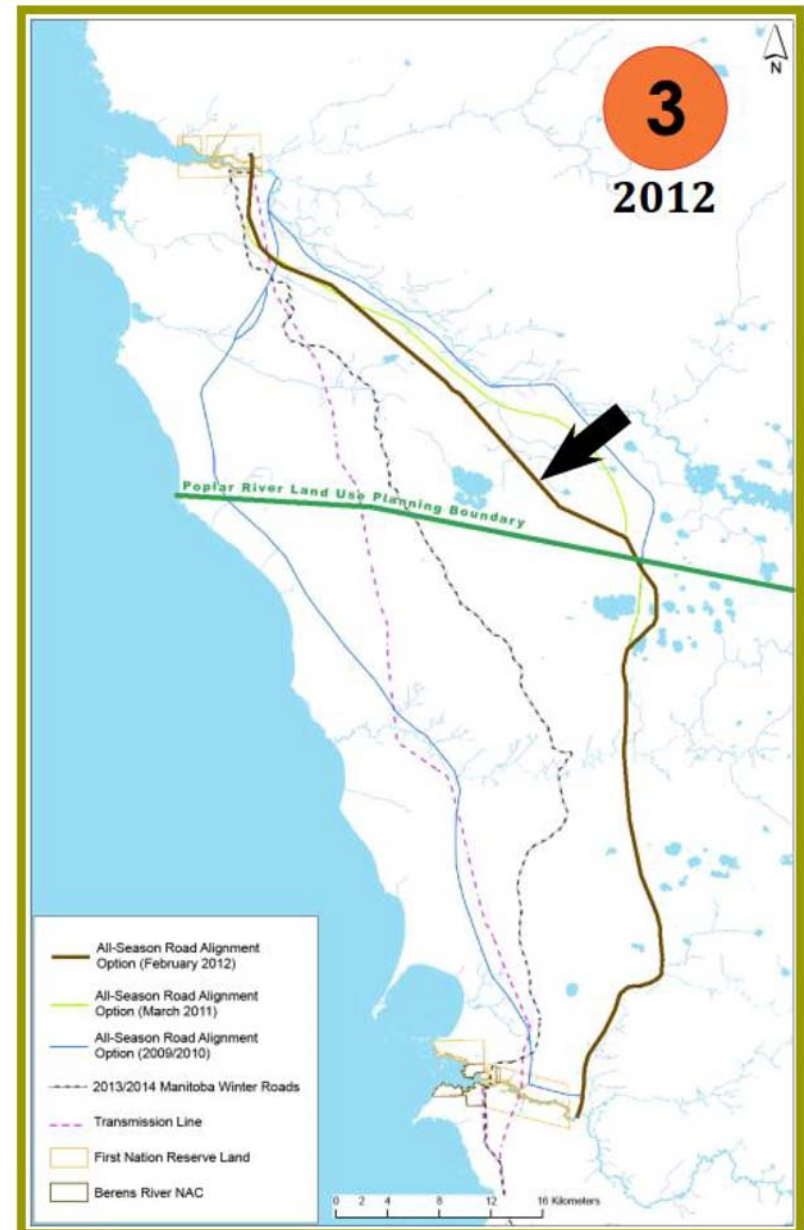
# Evolution of Road Route Refinements

- Moved route from muskeg areas near Lake Winnipeg further inland for constructability
- Moved portion of route to west away from Poplar River traditional use areas



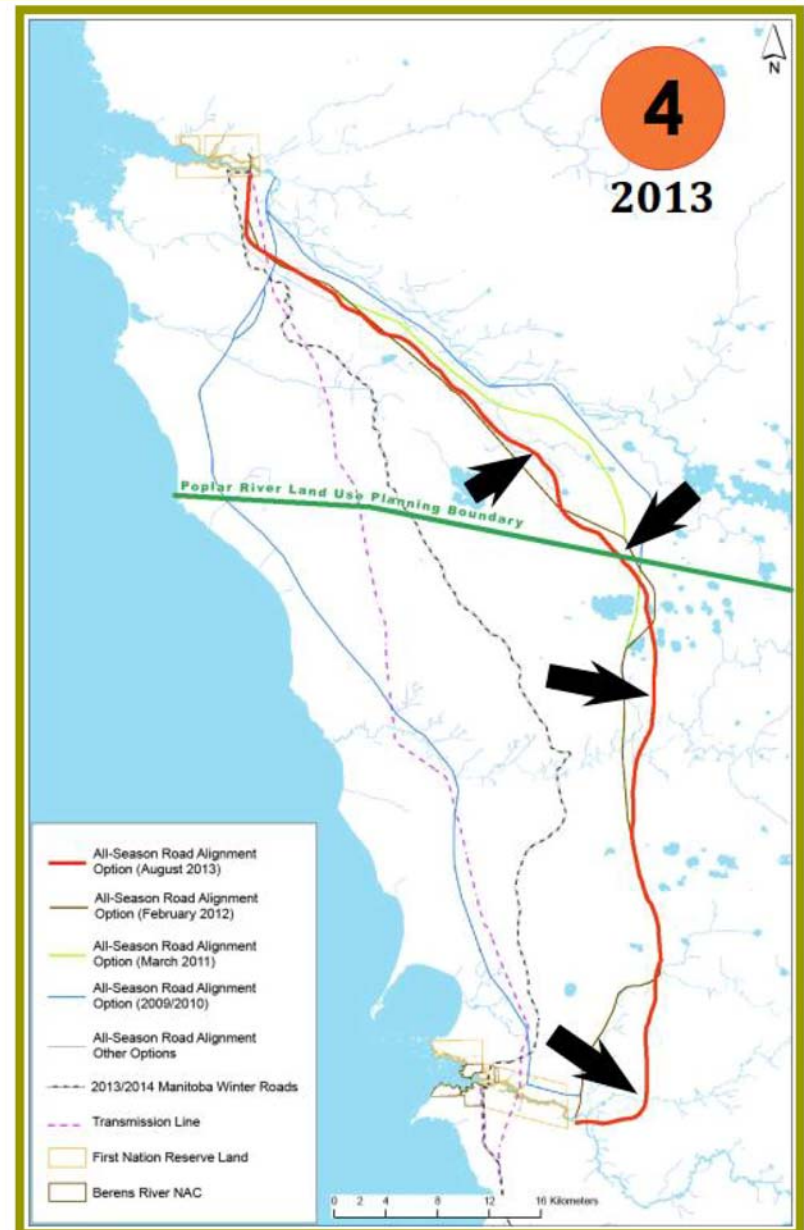
# Evolution of Road Route Refinements

- ❑ Moved route from muskeg areas near Lake Winnipeg further inland for constructability
- ❑ Moved portion of route to west away from Poplar River traditional use areas
- ❑ Moved route further to the west to avoid sensitive sites



# Evolution of Road Route Refinements

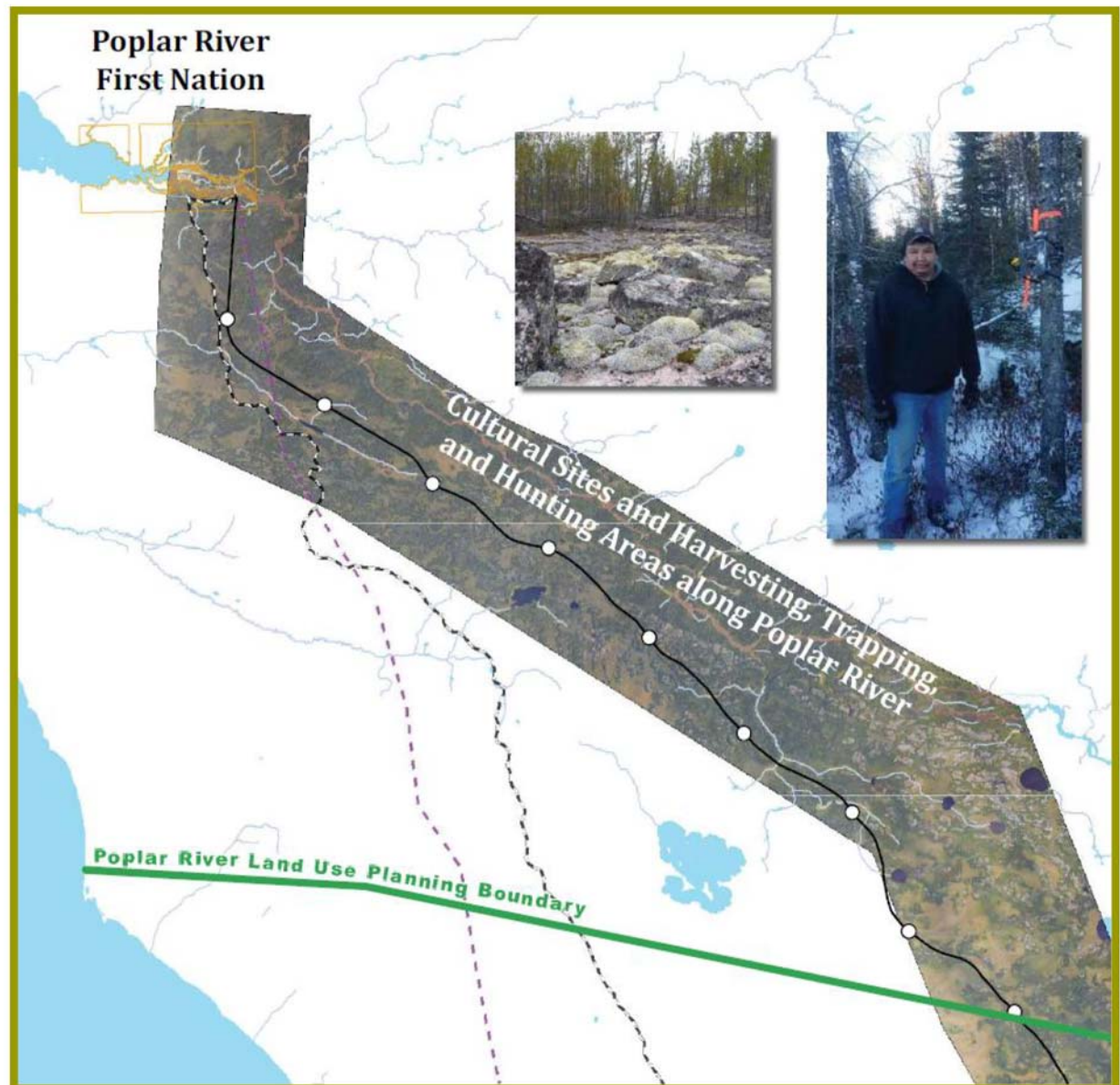
- ❑ Moved route from muskeg areas near Lake Winnipeg further inland for constructability
- ❑ Moved portion of route to west away from Poplar River traditional use areas
- ❑ Moved route further to the west to avoid sensitive sites
- ❑ **Moved portion of route to east away from sensitive habitat and traditional use areas near Etomami River**





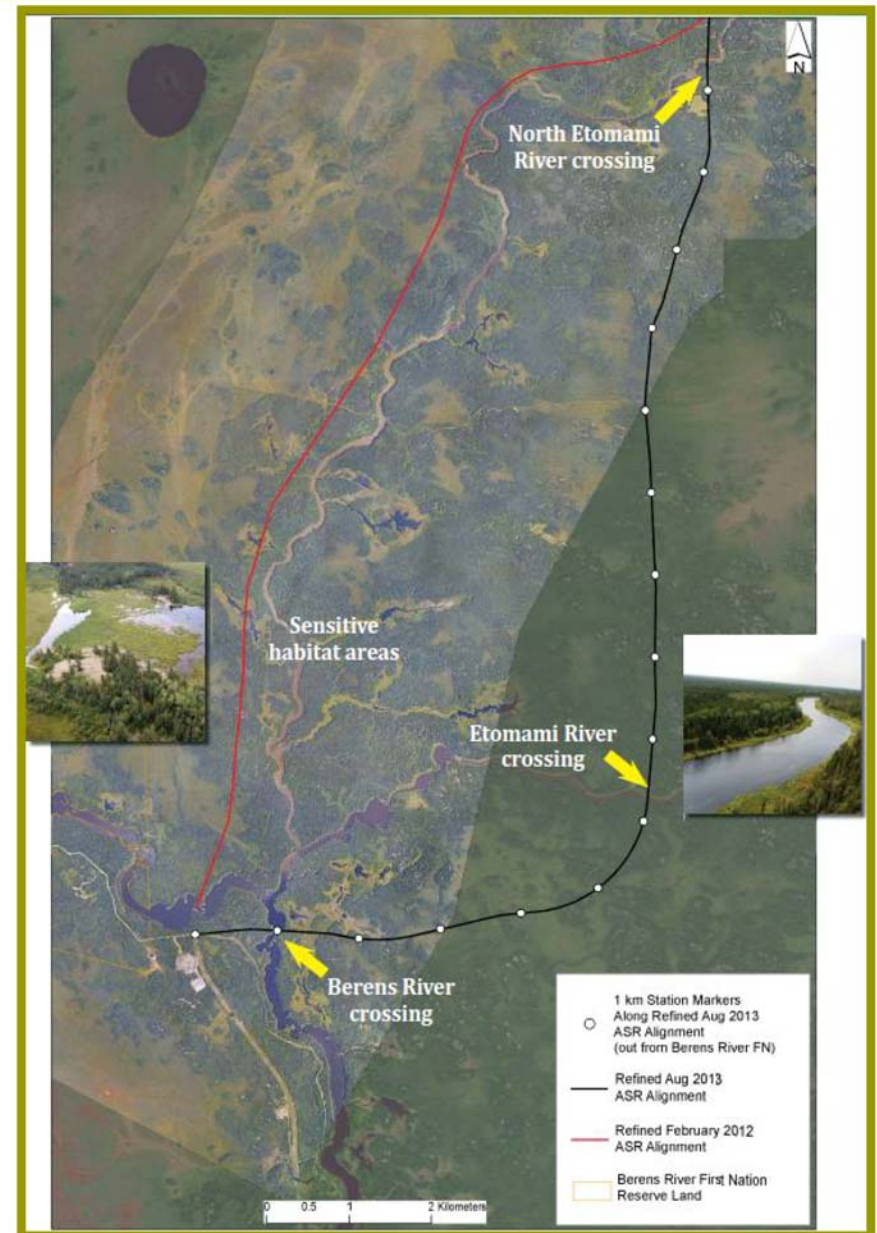
## Summary of Road Route Refinements – Poplar River

- Moved portion of route west to avoid Poplar River
  - Harvested plants
  - Cultural /sacred sites
  - Traditional land use
- Moved portion of route further west to avoid sensitive sites identified during baseline studies and discussions with Elders
- Avoids muskeg and wetlands along shoreline route and winter road



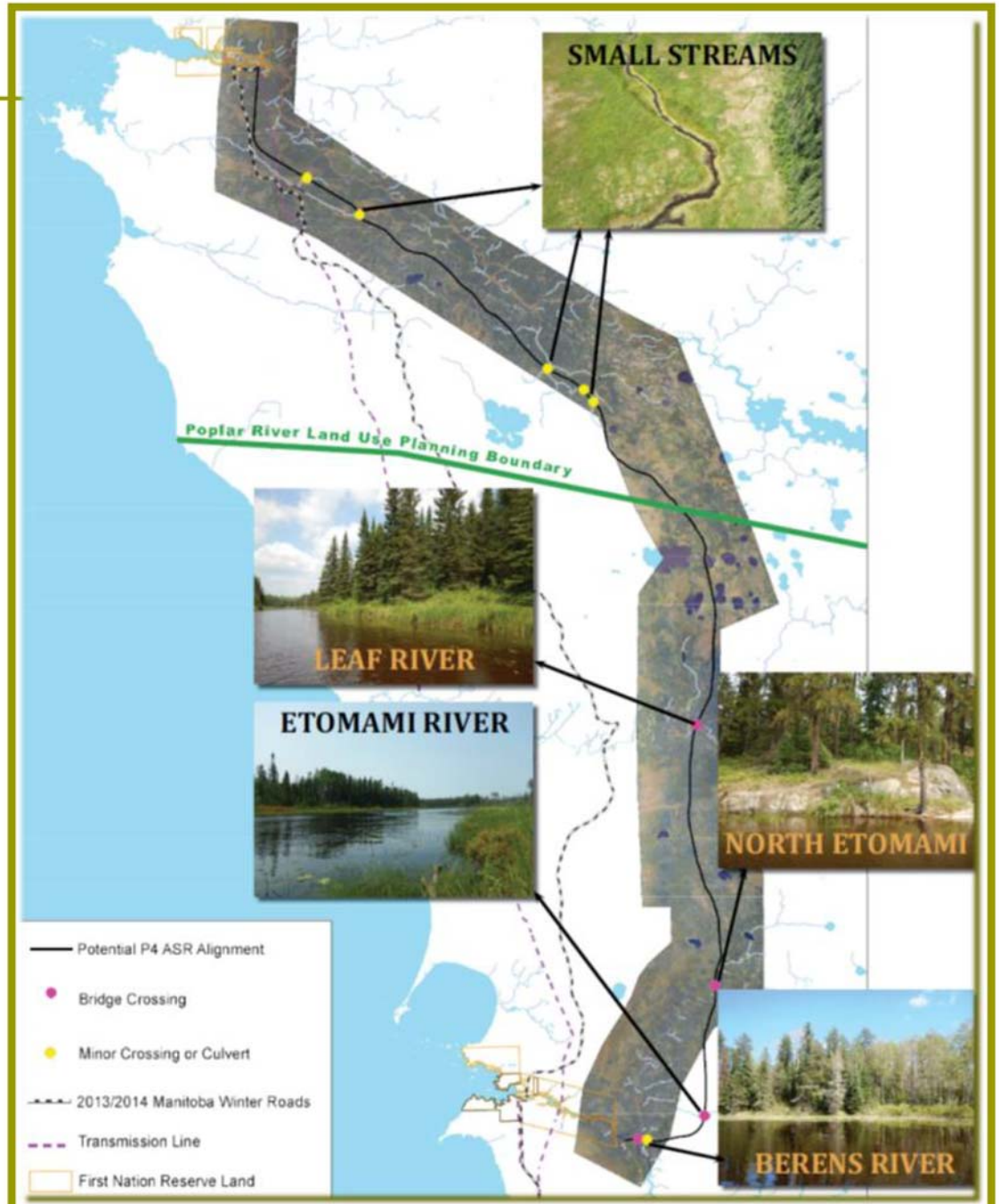
# Summary of Road Route Refinements - Berens River

- Realigned road to avoid:
  - Habitat
  - Traditional land use areas
  
- Moved portion of route further east to avoid Etomami valley
  
- Requires additional river crossing sites
  
- Avoids muskeg and wetlands along shoreline route and winter road

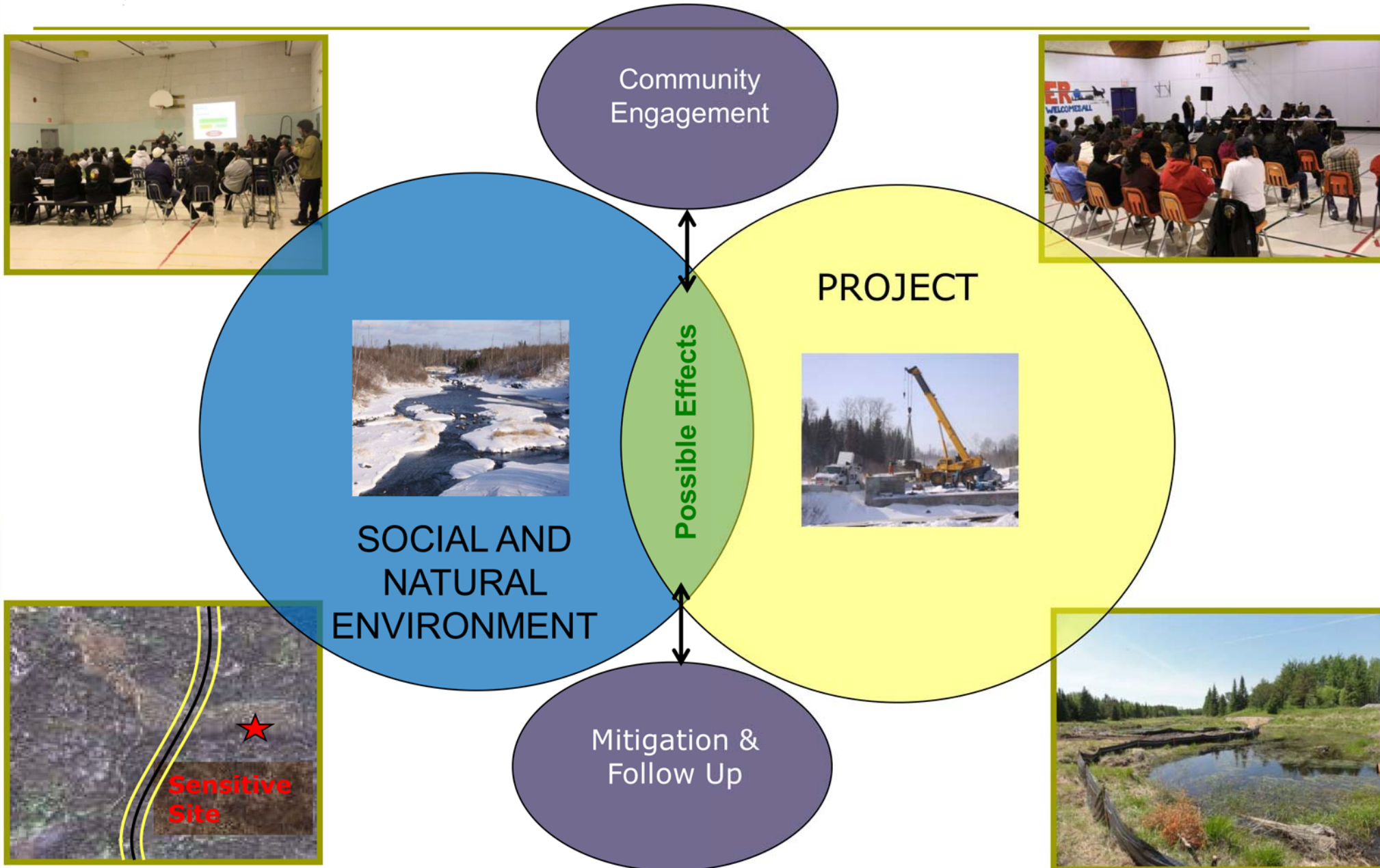


# River Crossings

- Revised route will require additional river crossing sites
  - More crossings, but away from sensitive community areas
  
- Four bridge crossings:
  - Berens River
  - Etomami River
  - North Etomami River
  - Leaf River
  
- Six minor crossings or culverts



# What is Environmental Impact Assessment?

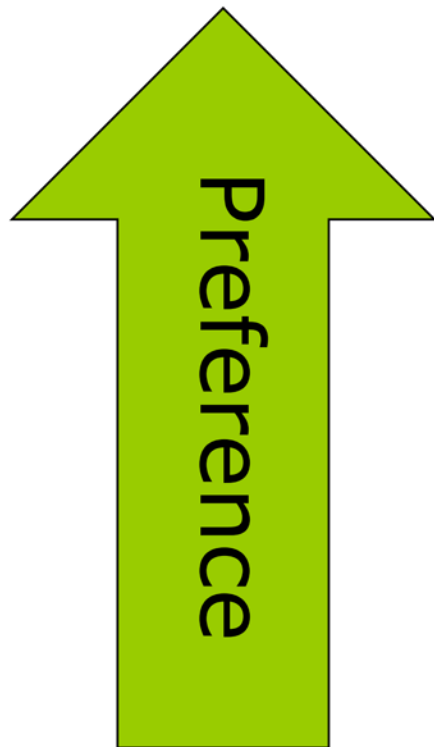


## What is Environmental Impact Assessment?

---

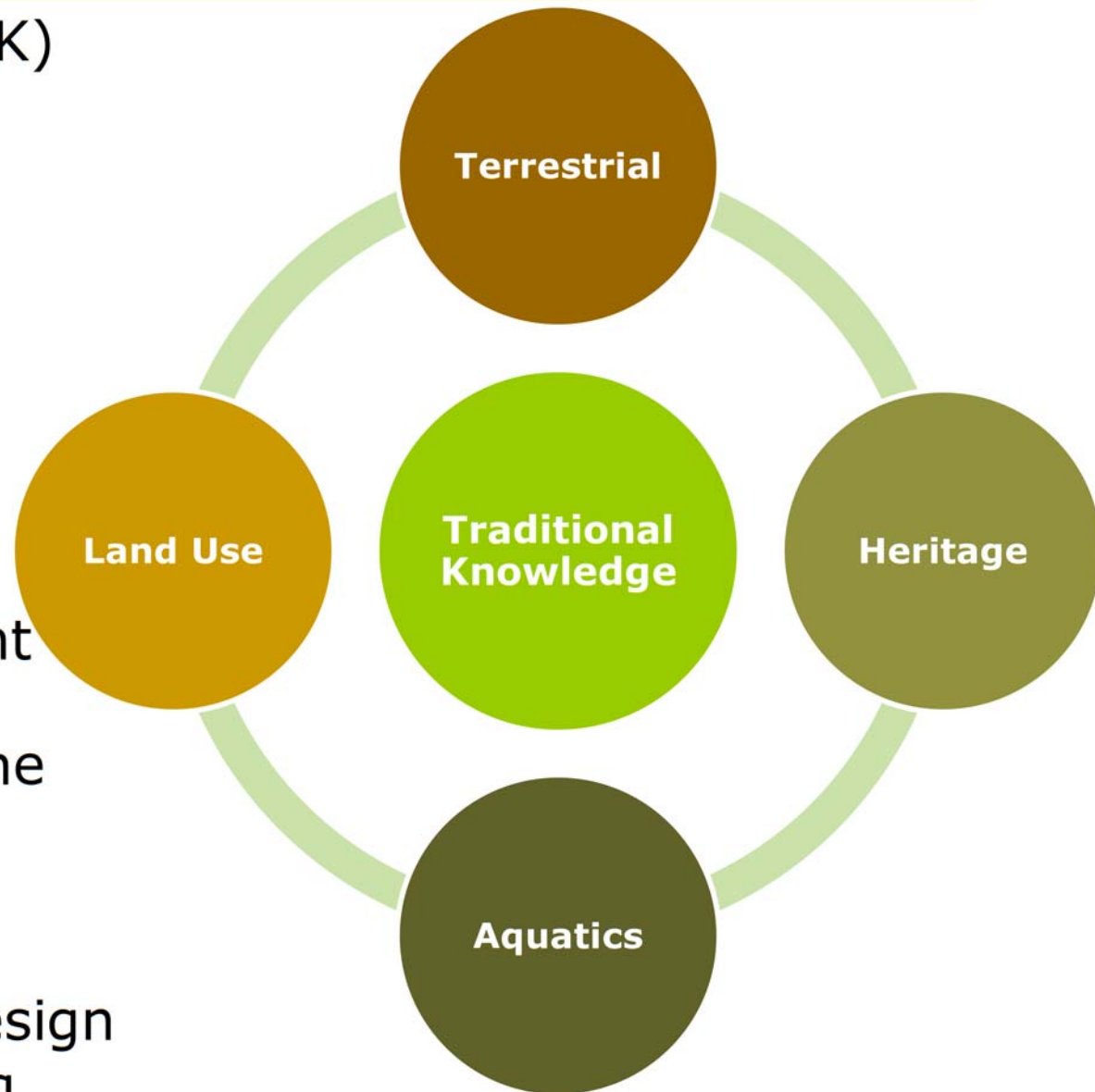
□ “Spectrum of Preference”:

- **Avoid**
- **Minimize**
- **Restore**
- **Reduce or Eliminate**
- **Offset**
- **Monitor**



# Baseline Data

- ❑ Traditional Knowledge (TK)
- ❑ Biophysical studies to augment TK studies
  - Vegetation
  - Wildlife surveys
  - Archaeological studies
  - Fisheries and habitat
- ❑ Used to confirm alignment
- ❑ Provide information for the Environmental Impact Assessment
- ❑ Referenced for project design and construction planning



# Wildlife – Trapper Program

- ❑ Program started winter 2013/2014
- ❑ 3 trappers from Poplar River
- ❑ Trappers are recording:
  - Fur harvest information
  - Weather conditions
  - Animal tracks and sign
  - Collecting samples



- ❑ Identify important habitat
- ❑ Identify presence of protected species
- ❑ Incorporate local knowledge
- ❑ Evaluate movement relative to existing roads, transmission lines, cut lines, etc.
- ❑ Predator/prey relationships
- ❑ Focus on caribou with additional species data collected, including:
  - Furbearers (trapped species)
  - Moose
  - Wolves





# Wildlife – Valued Components

- **Important for local community cultural, traditional, and economic activities & values**

- **Big Game:**

- Caribou & Moose

- **Fur-bearing species:**

- Marten
- Lynx
- Wolf
- Beaver

- **Birds:**

- Raptors / Birds of Prey (eagles, osprey, hawks, owls)
- Waterfowl (geese, ducks)
- Migratory birds (e.g. songbirds)
- Game birds (grouse, partridge)



# Terrestrial - Valued Components

## □ Vegetation

- Aerial imagery studies to document plant communities
- Field visits to document individual species
- Species at risk, edible plants, medicines

## □ Soils & Topography

- Geotechnical studies
- Evaluation of potential change



# Aquatic – Valued Components

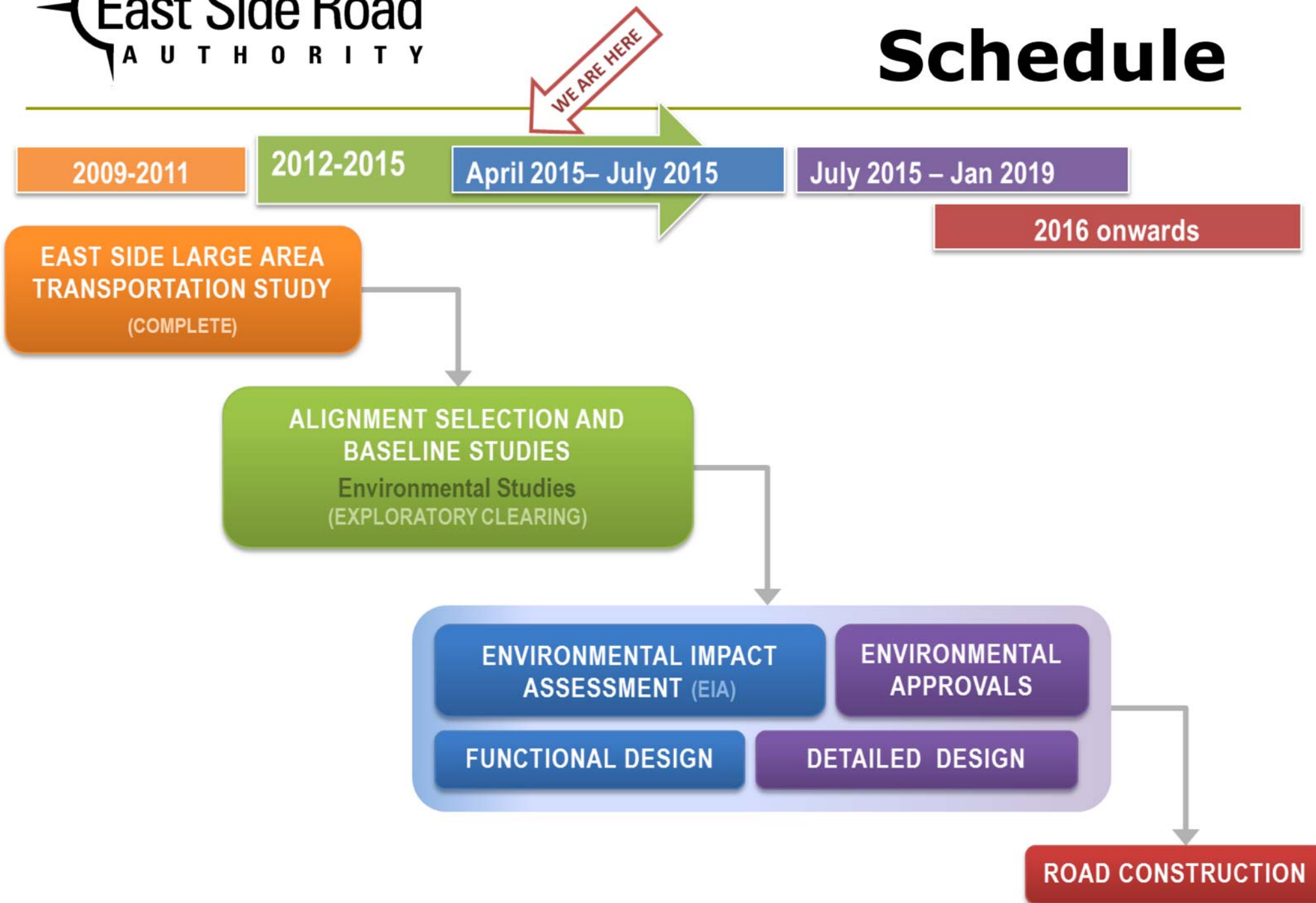
- ❑ **Important for local community cultural, traditional, and economic activities & values**
- ❑ **Aquatic habitat**
- ❑ **Harvested fish species:**
  - Walleye / Pickerel
  - Northern Pike / Jackfish
  - White Sucker
  - Lake Whitefish
  - Lake Sturgeon



# Cultural - Valued Components

- Input from
  - Communities
  - Elders
  - Archeological studies
  
- Cultural and archeological sites
  
- Areas important for community health and well-being
  
- Harvesting of edible, medicinal, and cultural plants
  
- Trapping & hunting





# Table Talks!

- We want to hear and learn from you
- Write on boards what is important to you, and what should be considered

## We will be back to meet with you to discuss the following:

- **Late Spring 2015:** To review potential effects of the project and identify how these effects may be addressed
- **Early Summer 2015:** To confirm findings of the environmental assessment with the community

***Please stay and talk with us!***



# Next Steps

**Berens River to Poplar River All Season Road Environmental Assessment**  
*Tentative Schedule of Engagement Events*

Date	Meeting / Event	Location	Purpose
23-Apr-15	In-Community #1	Poplar River	Project Information, Baseline, Valued Components
30 April (TBC)	In-Community #1	Berens River	Project Information, Baseline, Valued Components
+ 2 weeks after In-Community Meetings	Other Stakeholders #1	Winnipeg	Project Information, Baseline, Valued Components, what we heard from Berens River & Poplar River communities
Weeks of 19 May / 25 May (TBC)	In-Community #2	Berens River & Poplar River	Communicate the results of environmental studies to date, Alternative Identification, and Analysis
+ 2 weeks after In-Community Meetings	Other Stakeholders #2	Winnipeg	Communicate the results of environmental studies to date, Alternative Identification, and Analysis, what we heard from Berens River & Poplar River communities
Weeks of 15 June / 22 June (TBC)	In-Community #3	Berens River & Poplar River	Communicate the results of environmental studies, Preferred Alternative for Road Alignment, Mitigation of Potential Impacts

***Thank you for your participation!***

**Contact Information**

**The East Side Road Authority**

*Phone: (204) 945-4900*  
*Toll-Free 1-866-356-6355*  
*Fax: (204) 948-2462*





**Annex A2-5:**  
Display Boards – Berens River First Nation  
Community Meeting (Round 4)

---

# Welcome!

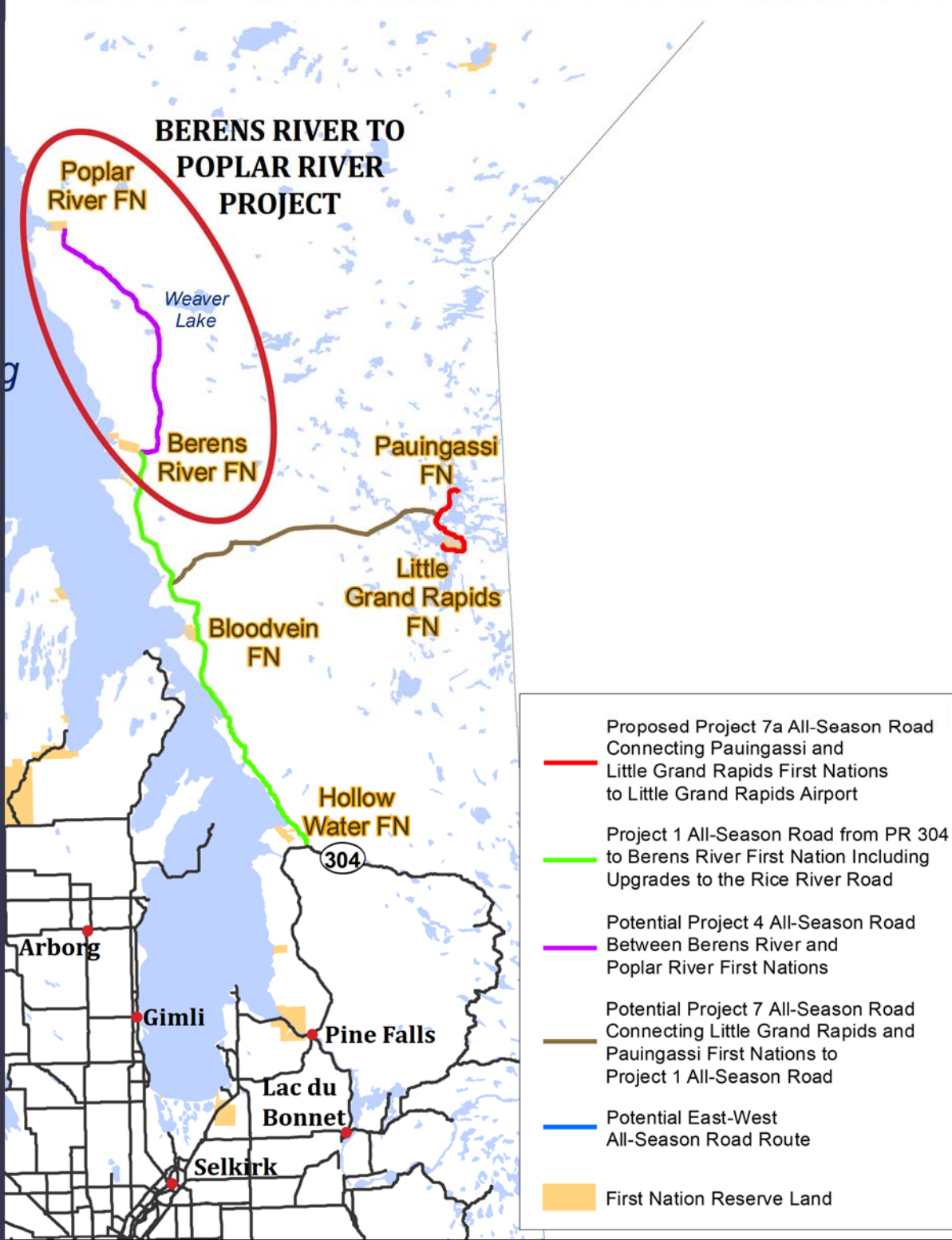


to the **East Side Road Authority**  
**Community Meeting**

for the **Berens River to**  
**Poplar River All-Season Road**

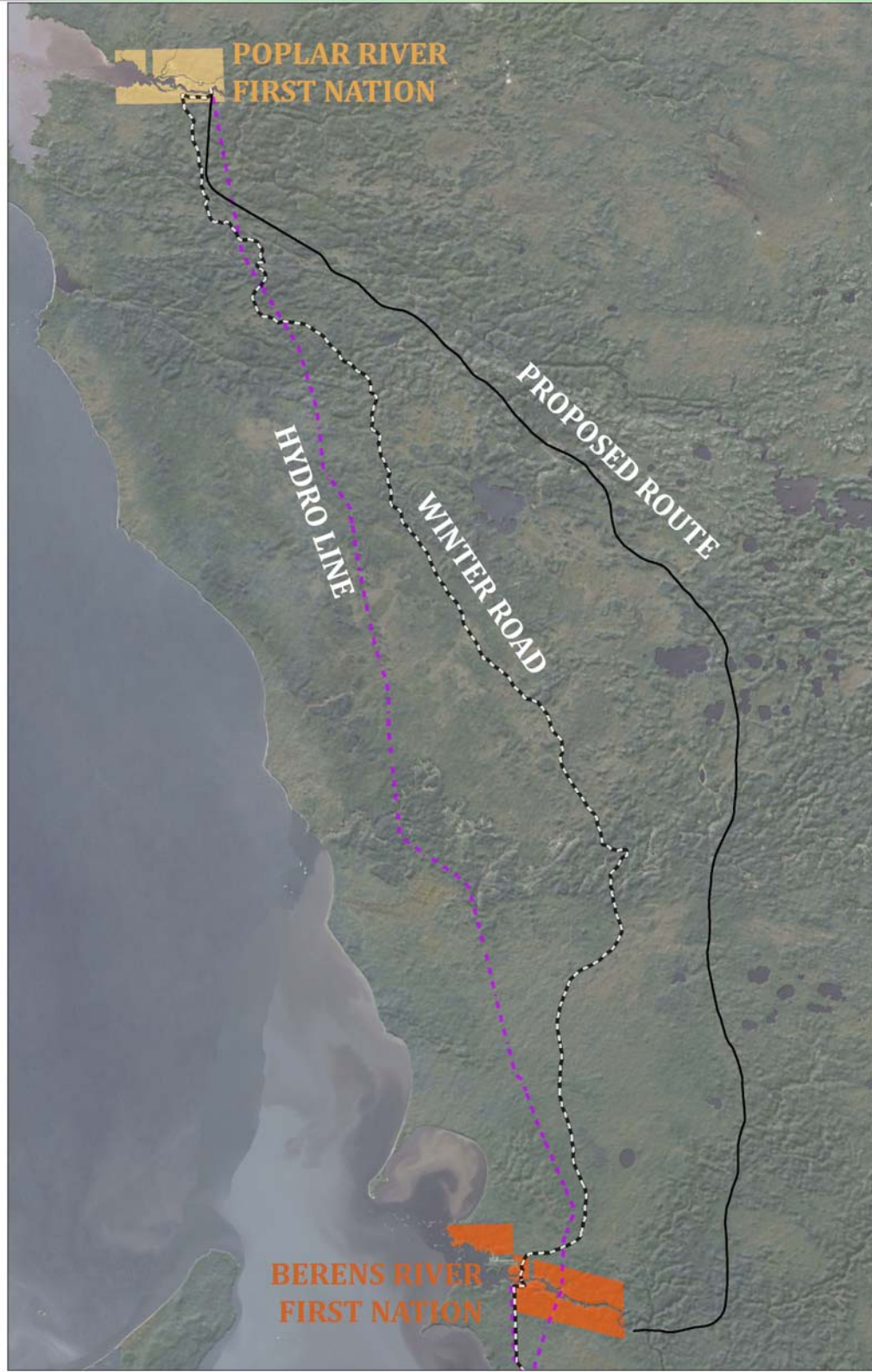
# BERENS RIVER TO POPLAR RIVER ALL-SEASON ROAD

EAST SIDE ROUTE MAP



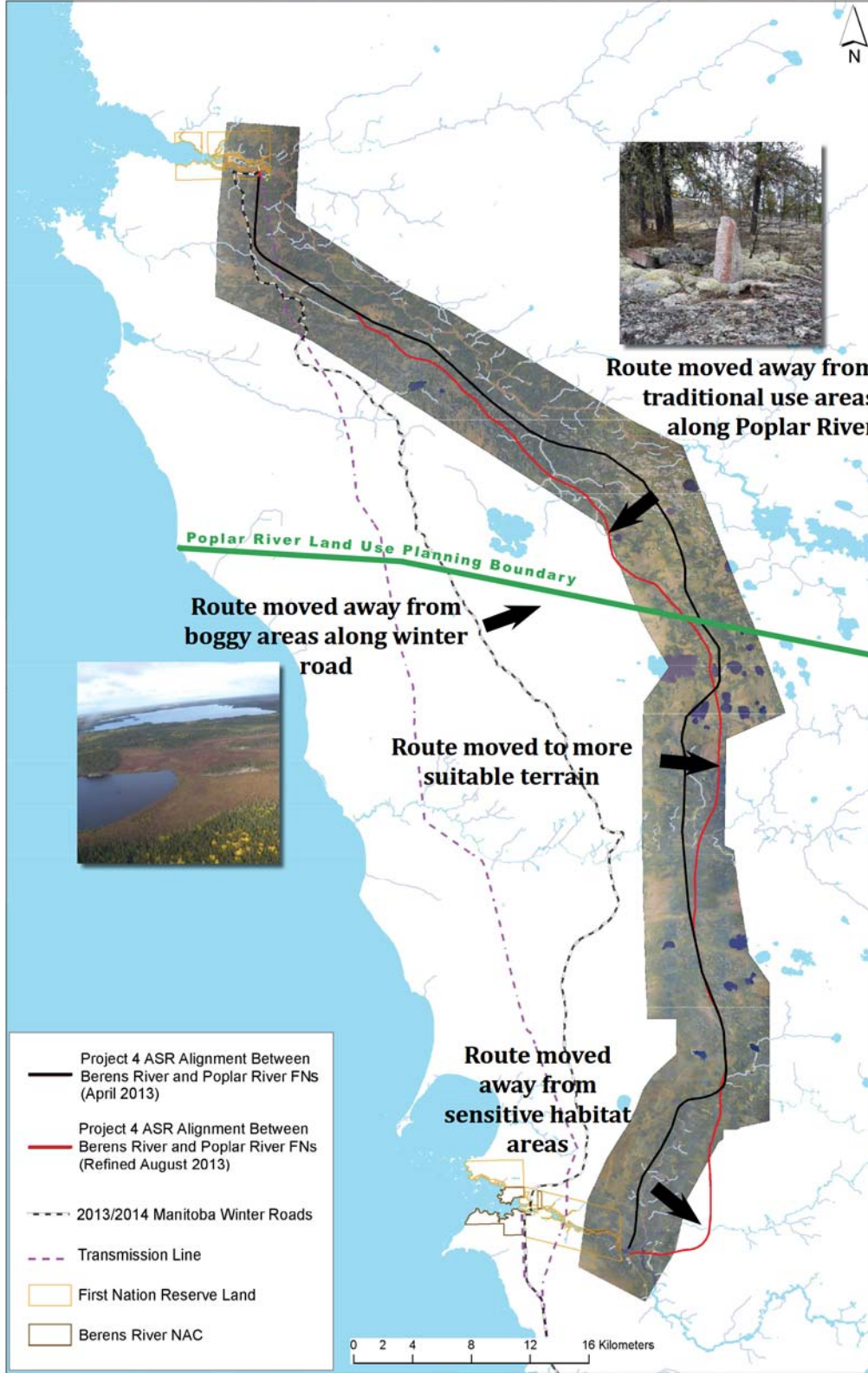
# BERENS RIVER TO POPLAR RIVER ALL-SEASON ROAD

## PROJECT AREA



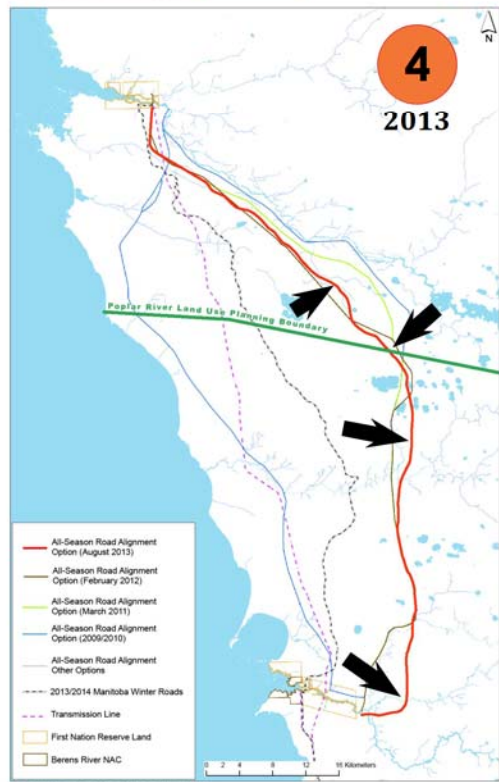
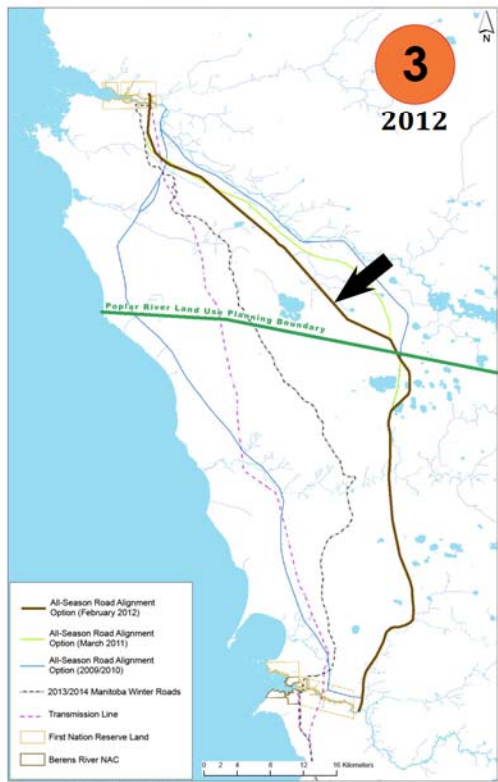
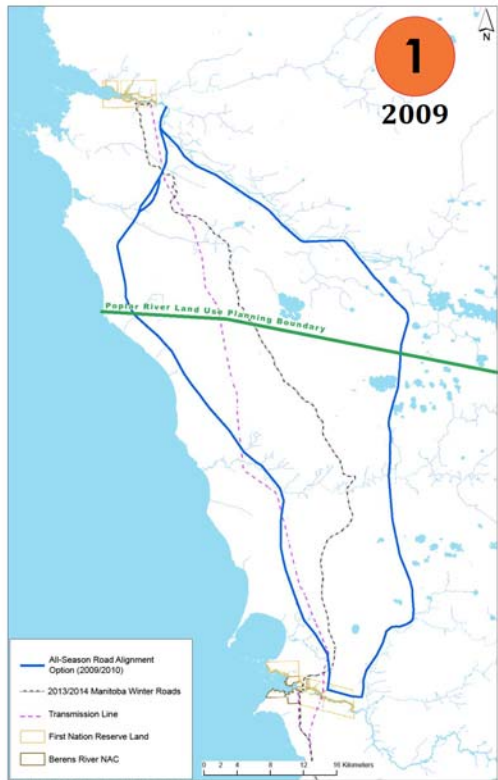
# BERENS RIVER TO POPLAR RIVER ALL-SEASON ROAD

## ALIGNMENT FACTORS



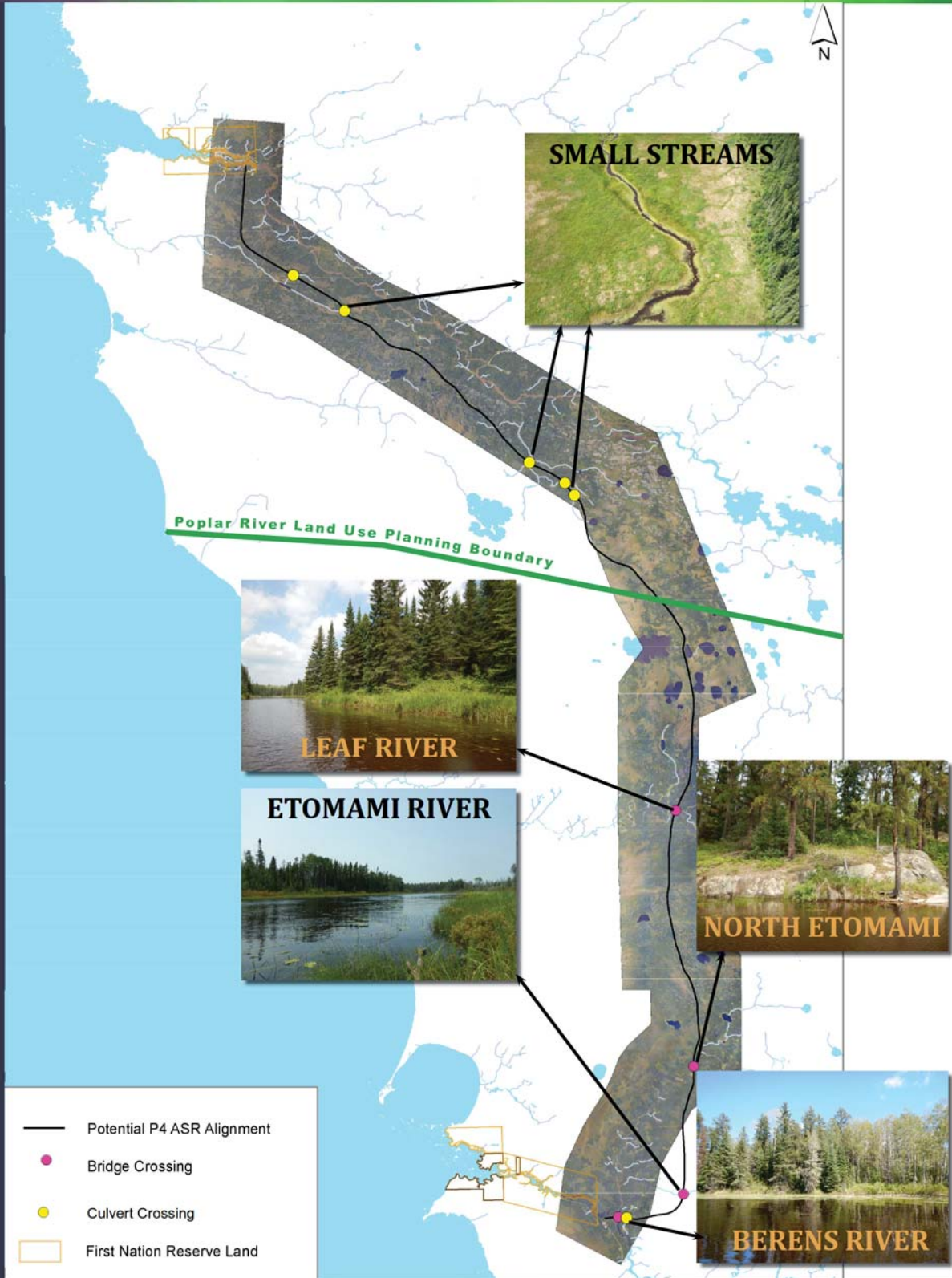
# BERENS RIVER TO POPLAR RIVER ALL-SEASON ROAD

## ALIGNMENT HISTORY



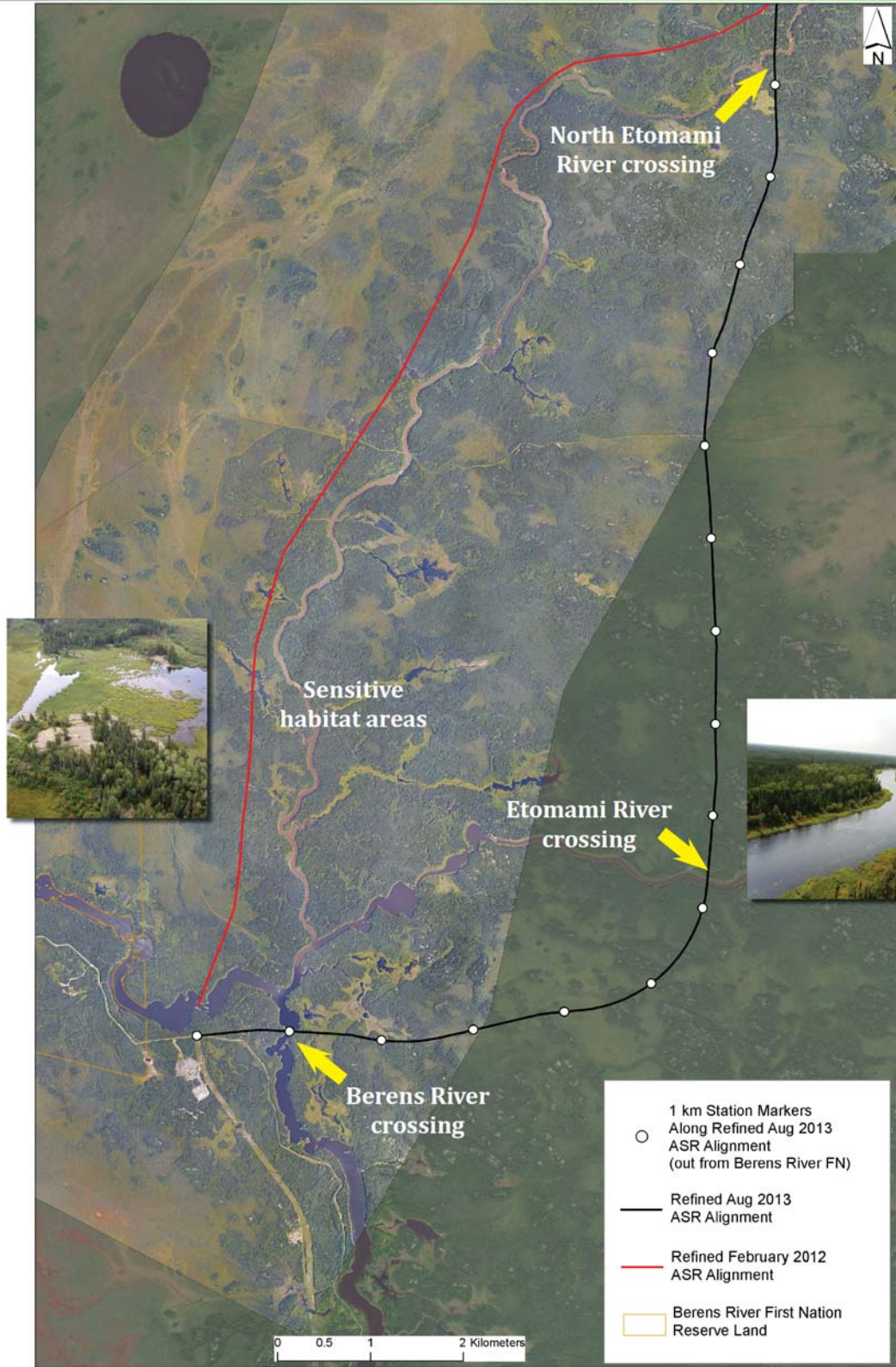
# BERENS RIVER TO POPLAR RIVER ALL-SEASON ROAD

## WATER CROSSINGS



# BERENS RIVER TO POPLAR RIVER ALL-SEASON ROAD

## BERENS RIVER AREA





# BERENS RIVER TO POPLAR RIVER ALL-SEASON ROAD

# POPLAR RIVER AREA



# BERENS RIVER TO POPLAR RIVER ALL-SEASON ROAD

## TERRESTRIAL ENVIRONMENT

The project area includes animal species that are important for local community cultural, traditional, and economic activities and values.



### Fur-bearing species:

- Marten
- Beaver
- Lynx
- Wolves



### Birds:

- Raptors/Birds of Prey (eagles, osprey, hawks, owls)
- Waterfowl (geese, ducks)
- Migratory birds (e.g. songbirds)
- Game birds (grouse, partridge)



### Big game:

- Caribou
- Moose



### What's important to YOU?

\_\_\_\_\_

\_\_\_\_\_

\_\_\_\_\_

\_\_\_\_\_

\_\_\_\_\_

\_\_\_\_\_

\_\_\_\_\_

\_\_\_\_\_

\_\_\_\_\_

\_\_\_\_\_

# BERENS RIVER TO POPLAR RIVER ALL-SEASON ROAD

## AQUATIC ENVIRONMENT

The project area includes fish species that are important for local community cultural, traditional, and economic activities and values.



### Harvested fish species:

- Walleye/Pickerel
- Northern Pike/Jackfish
- White Sucker
- Lake Whitefish
- Lake Sturgeon



What's important to YOU?

---

---

---

---

---

---

---

---

---

---

The land provides fresh water, healthy food, and clean air. Communities depend on the land for their cultural and physical health.



Cultural and archaeological sites  
Community health and well-being



Trapping and hunting



Harvesting of edible, medicinal, and cultural plants

**What's important to YOU?**

---

---

---

---

---

---

---

---

---

---

# BERENS RIVER TO POPLAR RIVER ALL-SEASON ROAD

## SOCIO-ECONOMIC

Construction of an All-Season Road presents many opportunities for economic benefits to East Side communities:

- Construction jobs and training
- Tourism and recreation
- Year-round road access
- Reduced shipping and travel costs



What's important to YOU?

---

---

---

---

---

---

---

---

---

---

---

---

---

---

---

---

---

---

---

---

---

---

---

---

OTHER CONSIDERATIONS

The previous boards show aspects that will be considered in the Environmental Assessment.

Do you agree?  
What else should be considered?



What's important to YOU?

Lined area for writing responses.

**Thank you for coming!**



For more information contact

**1-866-356-6355**

**[www.eastsideroadauthority.mb.ca](http://www.eastsideroadauthority.mb.ca)**



**Annex A2-6:**  
Poster – Poplar River First Nation  
Community Meeting (Round 4)

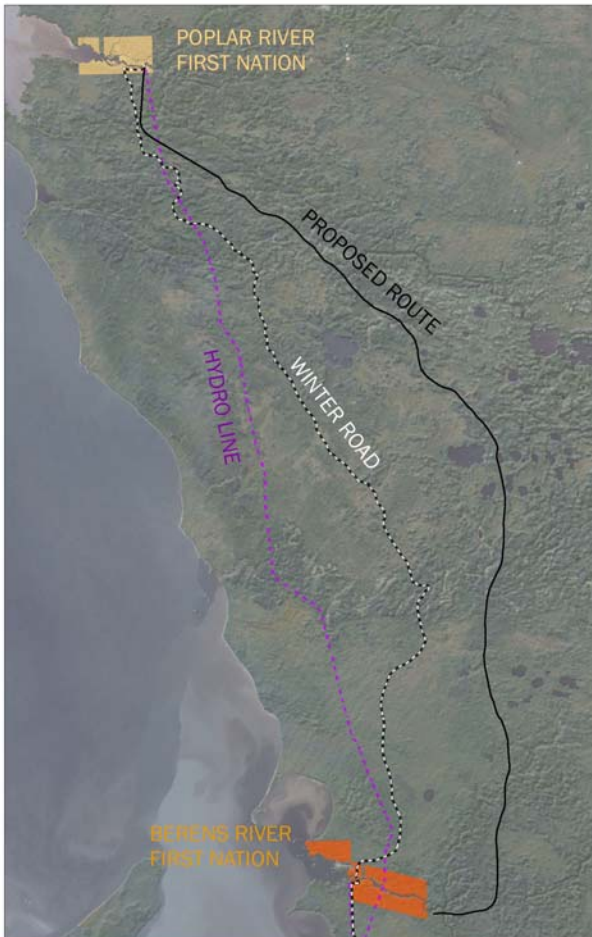
---



# BERENS RIVER TO POPLAR RIVER ALL-SEASON ROAD

## COMMUNITY MEETING

The East Side Road Authority (ESRA) is hosting a Community Meeting to discuss the proposed All-Season Road project between Berens River First Nation and Poplar River First Nation.

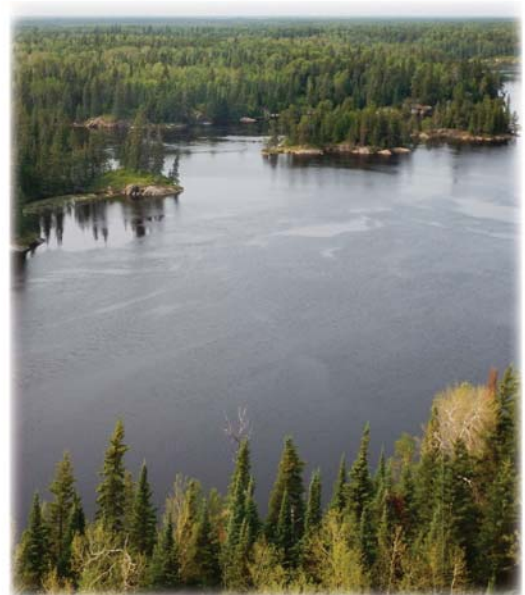


## Poplar River Elementary School

**Thursday, April 23, 2015**

**Presentation 6:00pm**

**Discussion until 8:30pm**



The Community Meeting is an opportunity to discuss the proposed all-season road project and discuss what you think is important to consider in the Environmental Assessment. We want to hear your views on this proposed All-Season Road.

For more information on the Community Meeting or the East Side Transportation Initiative, please visit

**[www.eastsideroadauthority.mb.ca](http://www.eastsideroadauthority.mb.ca) 1-866-356-6355.**



**Annex A2-7:**  
Handout – Poplar River First Nation  
Community Meeting (Round 4)

---

# BERENS RIVER TO POPLAR RIVER ALL-SEASON ROAD

## EAST SIDE TRANSPORTATION INITIATIVE

The East Side Road Authority (ESRA) is undertaking the East Side Transportation Initiative (ESTI), a strategic initiative to provide improved, safe and more reliable transportation service for the remote and isolated communities on the east side of Lake Winnipeg.

The East Side Transportation Initiative consists of three main objectives:

1. Construction of an all-season road from Provincial Road PR 304 to Berens River First Nation

The project has received environmental authorizations and approvals from federal and provincial regulators and construction is underway on the 156 km all-season road from PR 304 to Berens River First Nation.

2. East Side Large Area Transportation Network Study

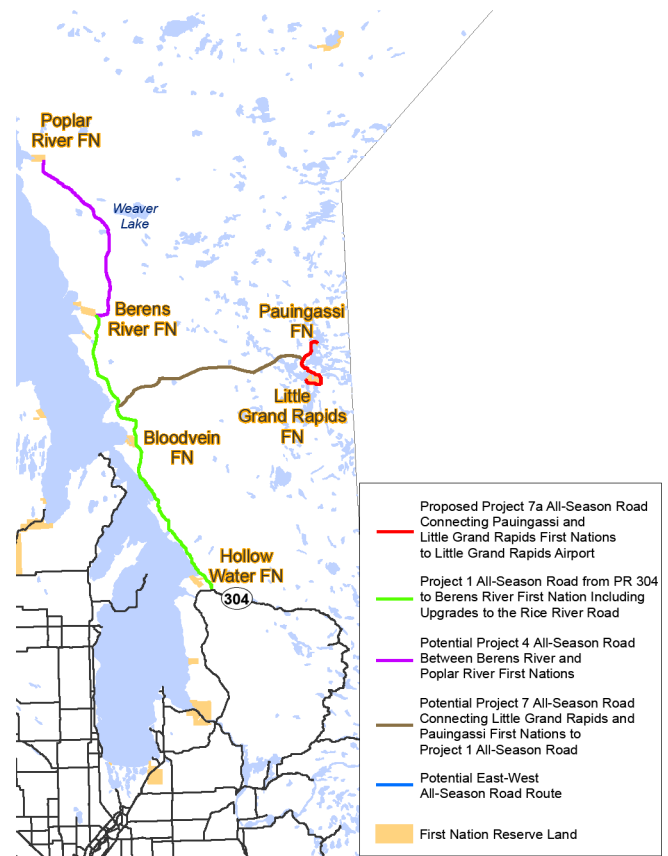
The study examined transportation infrastructure improvements for thirteen First Nation communities located on the east side of Lake Winnipeg. It was undertaken and completed in June 2011.

3. Community Economic Development

A key focus of the project is to ensure that local residents participate in, and benefit from, the construction of the all-season road through jobs, training and economic development opportunities. Community benefits agreements are in place with 13 east side communities.

Currently, ESRA is working on the Environmental Impact Assessment (EIA) for the Berens River to Poplar River All-Season Road.

The proposed 94 km road would connect Poplar River First Nation to the wider provincial highway system via PR 304 to the Berens River all-season road that is currently under construction. Through the EIA, the ESRA project team is meeting with community members and stakeholders to refine road alignments, receive input on valued environmental components, community heritage and cultural locations, and discuss how to minimize or avoid any potential impacts that the road may have on the communities and their interests.



# BERENS RIVER TO POPLAR RIVER ALL-SEASON ROAD

## PROJECT BENEFITS

The ESRA East Side Transportation Initiative has many community and economic development benefits including:

- Providing alternative transportation to the increasingly unreliable winter road network
- Enhancing access to emergency, health, and social services
- Reducing transportation costs for goods and services
- Creating construction employment, training, and economic opportunities
- Improving linkages between isolated and remote communities, and
- Enhancing opportunities for local sustainable economic development



ESRA will invest approximately \$315 million (35% of the road construction budget) over the next fifteen years into jobs, training and economic development opportunities for local residents.

ESRA is entering into Community Benefits Agreements (CBAs) with First Nation communities located in the vicinity of the proposed all-season road, with agreements signed with Berens River First Nation in 2009, and Poplar River First Nation in 2010. The purpose of these agreements is to provide jobs, training and economic opportunities related to road construction and maintenance for local residents. In addition, there are local hiring and procurement requirements in construction tenders.

**Annex A2-8:**  
Comment Sheet – Poplar River First  
Nation Community Meeting (Round 4)

---



**Annex A2-9:**  
Presentation – Poplar River First Nation  
Community Meeting (Round 4)

---



# **EAST SIDE TRANSPORTATION INITIATIVE**

## **Berens River to Poplar River FN Road Network**



### **The Environmental Assessment**

**Presentation to  
Poplar River First Nation**

April 23, 2015



## Why are we here?

### We are here today to:

- Provide information about the road project
- Review the options that have been considered
- Hear from you about what you value, so that it can be considered in the environmental assessment (EA) and addressed in the project design.



## EAST SIDE TRANSPORTATION INITIATIVE

- Provide alternative transportation to the increasingly unreliable winter road network
- Reduce transportation costs for goods and services
- Improve linkages between isolated and remote communities
- Enhance access to emergency, health & social services
- Construction employment, training & economic opportunities
- Enhanced opportunities for local sustainable economic development



1. Construction of an all-season road from Provincial Road PR 304 to Berens River First Nation

*Status: The project has received environmental authorizations and approvals from federal and provincial regulators and construction is underway on the 156 km all-season road from PR 304 to Berens River First Nation.*

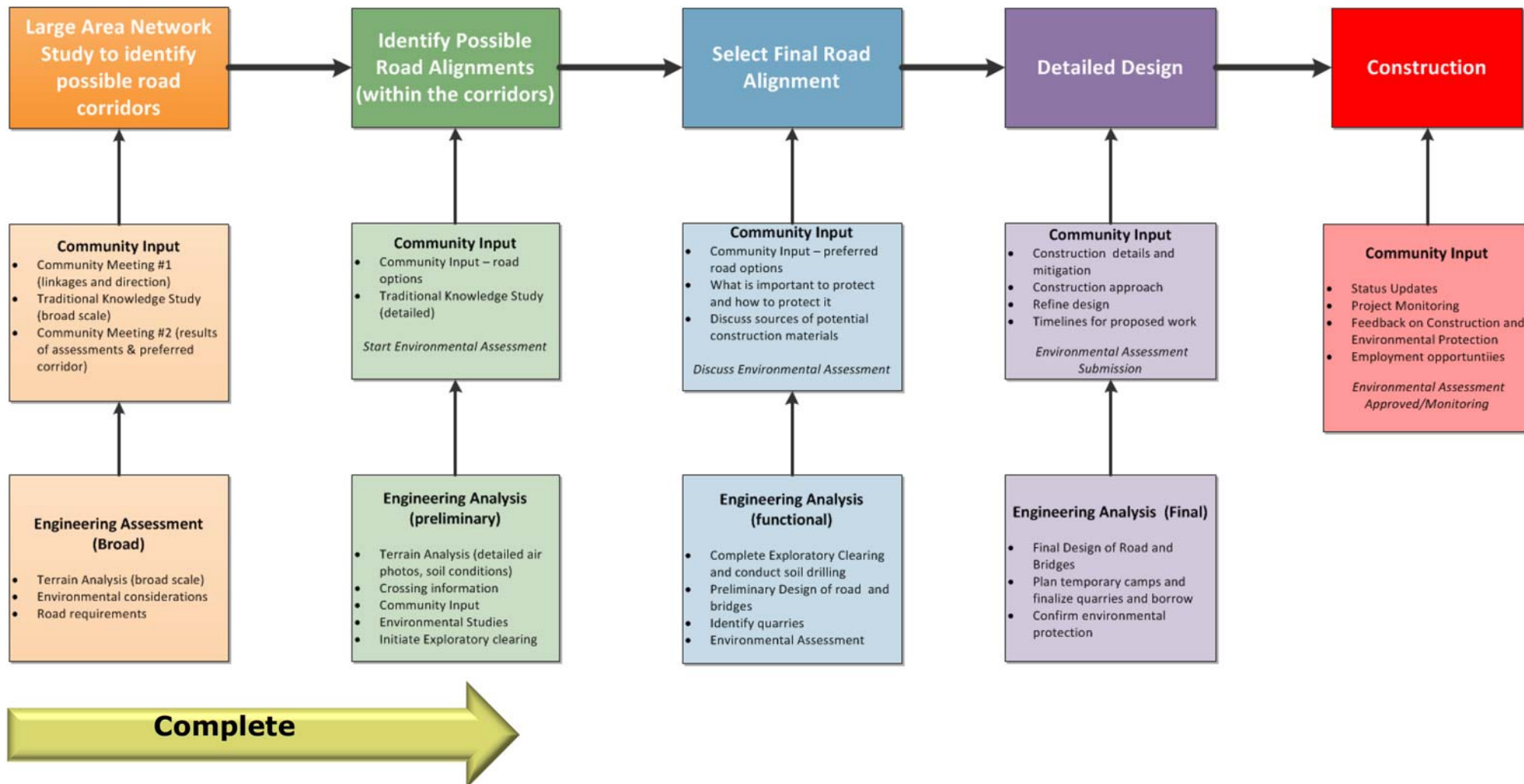
2. East Side Large Area Transportation Network Study

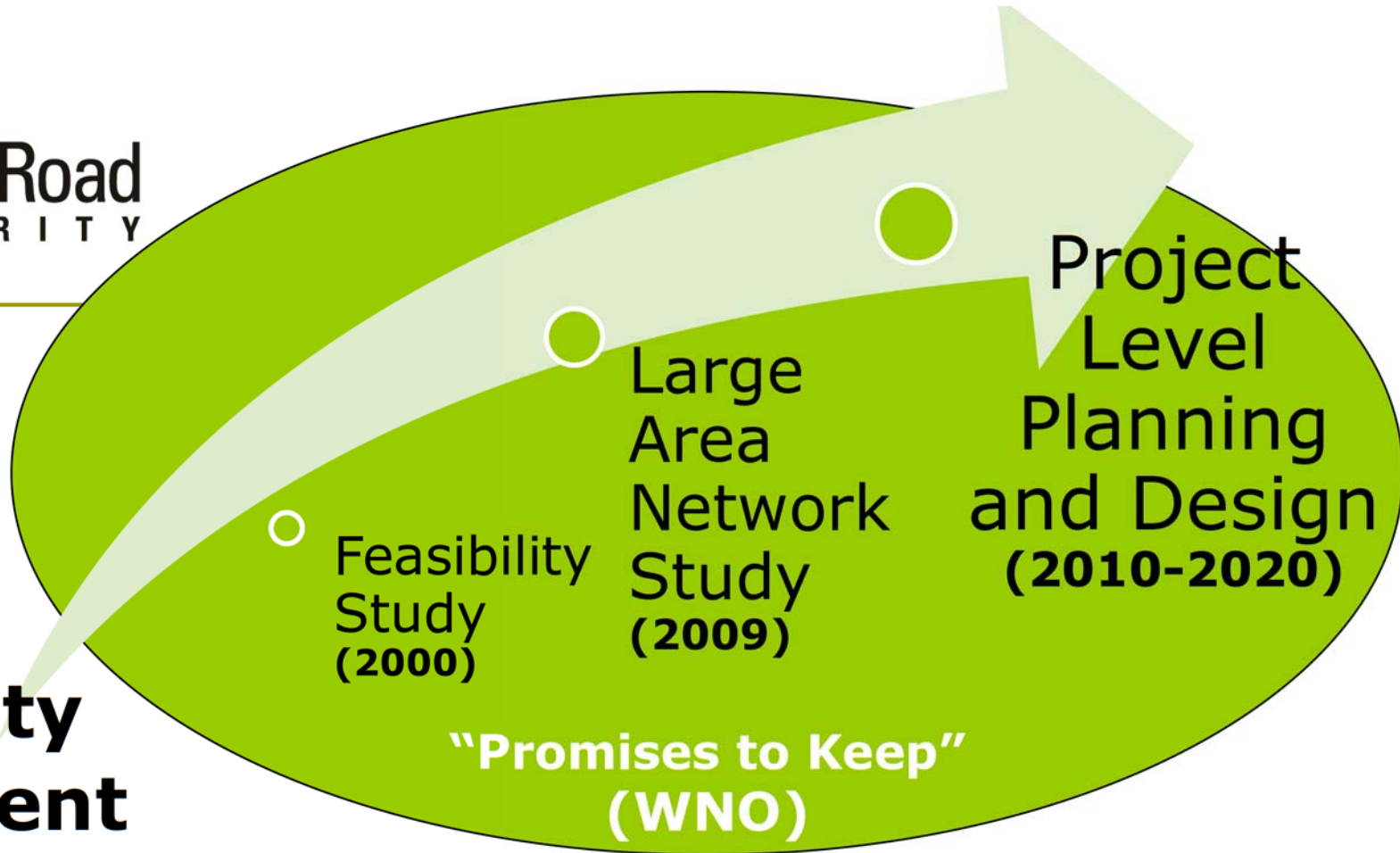
*Status: Interim winter road enhancements are underway with planning and environmental assessments to support the construction of pioneer and all season roads occurring in prioritized locations.*

3. Community Economic Development

*Status: Community benefits agreements are in place with 13 east side communities including Poplar River and Berens River.*

# Steps to Select, Design & Construct an All Season Road





## Community Engagement

- Community input is key to developing a good project
- ESRA will meet and discuss the project:
  - environmental site conditions;
  - potential impacts;
  - measures to avoid, reduce or eliminate impacts; and
  - construction employment and training.

## Prior Community Discussions & Agreements

- Since 2009, ESRA has met with the Poplar River community to discuss the project and select the best road location
  - Community Meetings
    - February 9, 2012
    - December 2, 2009
    - April 2, 2009
  - Asatiswisipe Aki Ma Ma Wichitowin Mutual Land Relationship Board & elders
    - February 25, 2014
    - November 26, 2012
    - September 24, 2012 (Elders)
    - March 12, 2012



## Prior Community Discussions & Agreements

- ❑ Past discussions resulted in changes in the potential route away from sensitive areas, based on community concerns
- ❑ Memorandum of Understanding and Community Benefits Agreement Signed in 2010



A) 94 km of All Season Road joining  
Poplar River to Berens River

Includes:

4 major water crossings:

- Leaf River
- North Etomami River
- Etomami River
- Berens River

6 possible minor crossings or  
culverts, and

Equalization culverts

B) On Reserve Access Road

- 430m on Poplar River First Nation





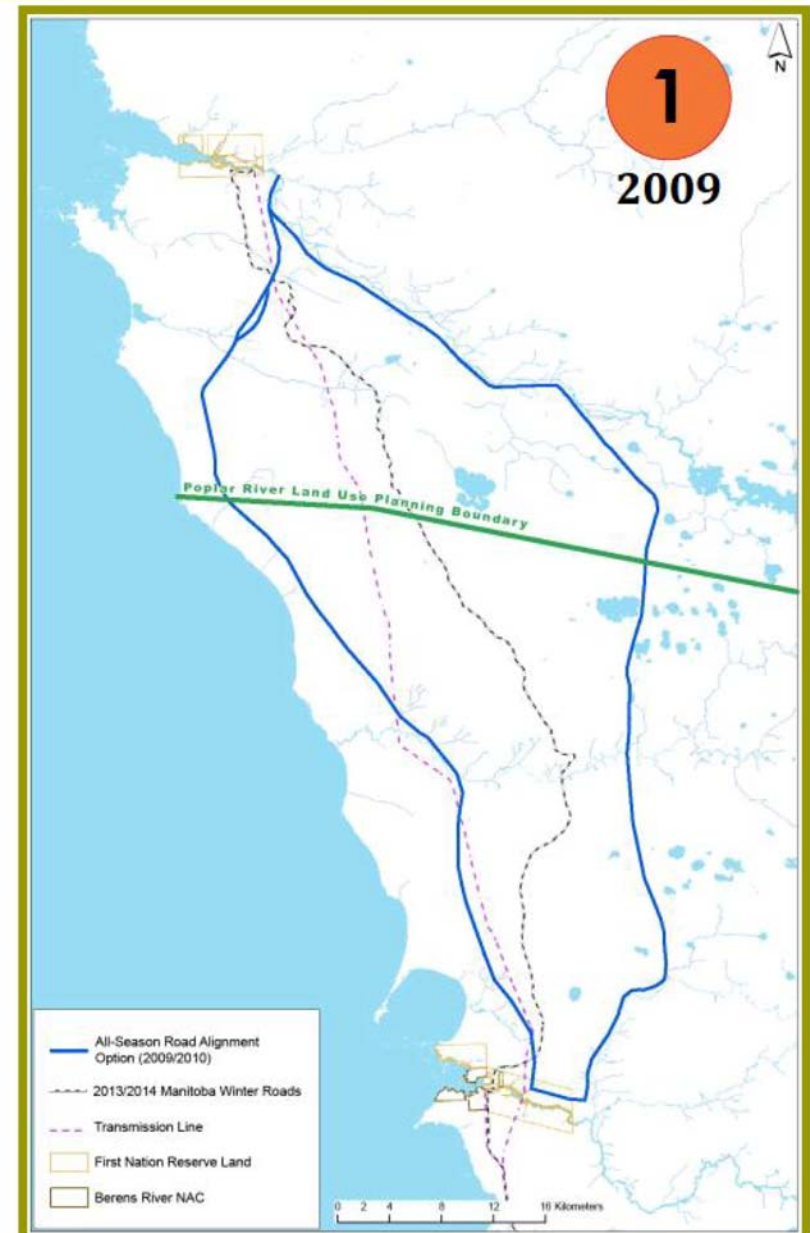
# Road Route Refinements (overall)

- Original route concept has been refined several times based on:
  - community feedback and knowledge of the land
  - results of traditional knowledge, archeology, soils and wildlife investigations



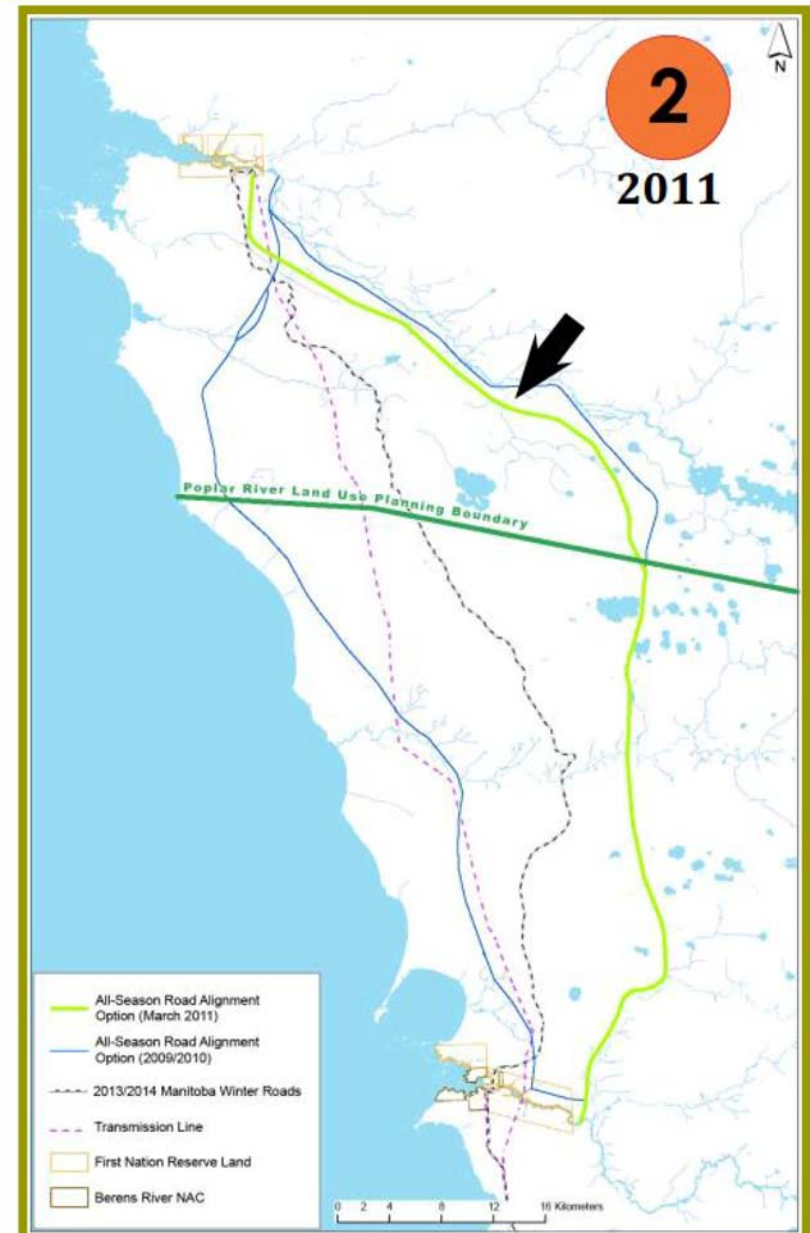
# Evolution of Road Route Refinements

- Two route options originally identified –
  - Coastal Route
  - Inland Route
- Considered topographic, physiographic, geological, social-economic and natural environmental information
- Moved route from muskeg areas near Lake Winnipeg further inland to suitable terrain for constructability



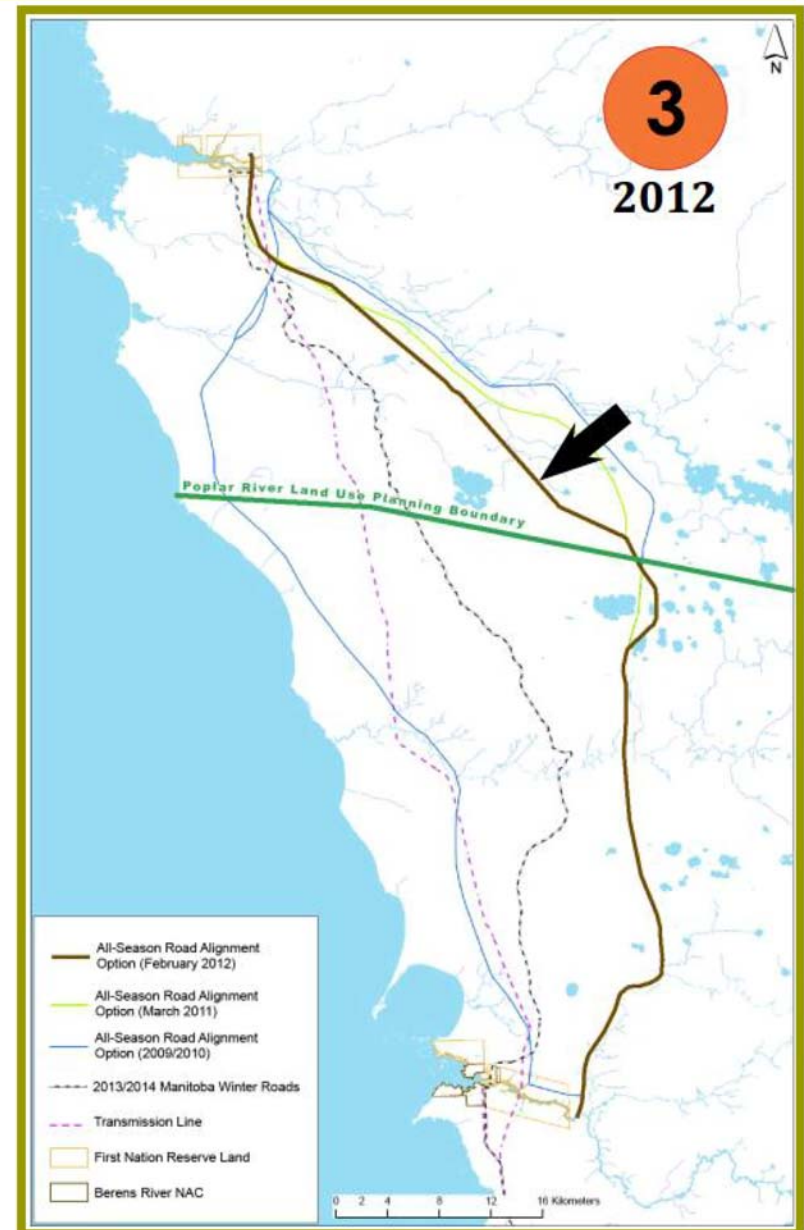
# Evolution of Road Route Refinements

- ❑ Moved route from muskeg areas near Lake Winnipeg further inland for constructability
- ❑ **Moved portion of route to west away from Poplar River traditional use areas**
- ❑ Moved portion of route to east away from sensitive habitat and traditional use areas near Etomami River



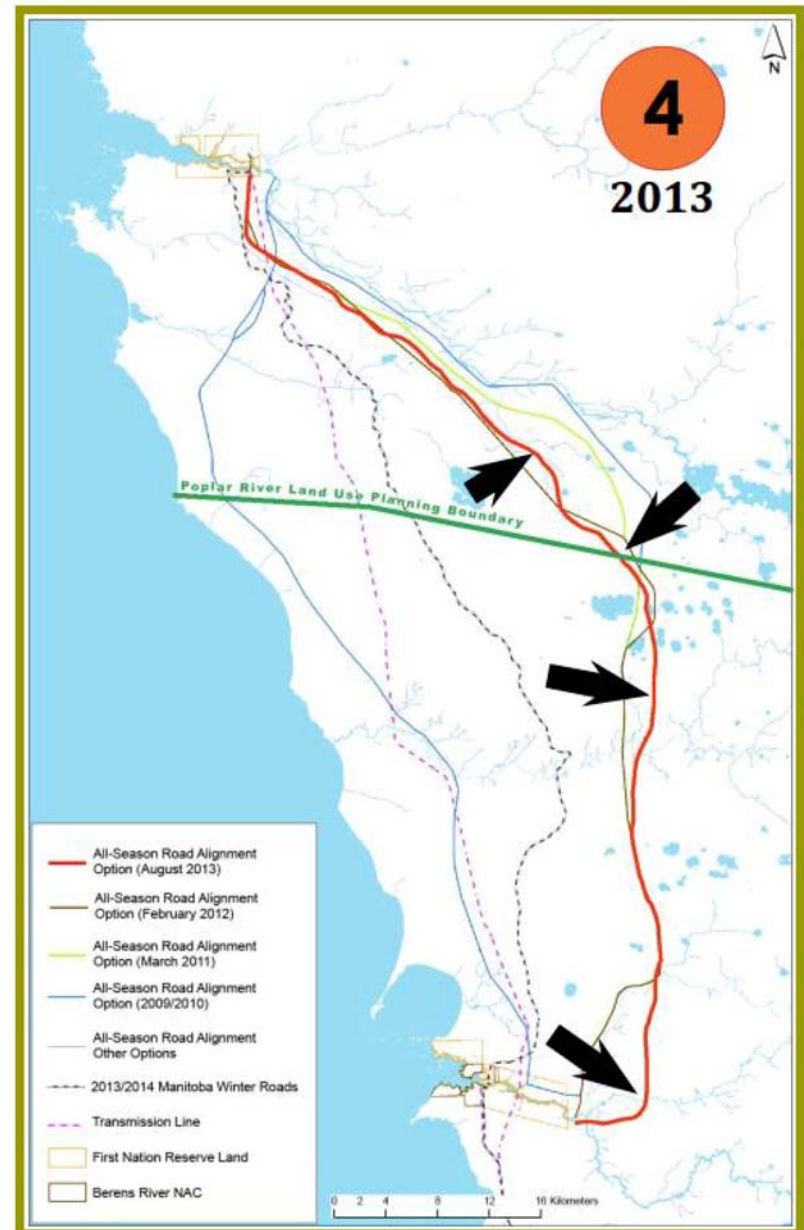
# Evolution of Road Route Refinements

- ❑ Moved route from muskeg areas near Lake Winnipeg further inland for constructability
- ❑ Moved portion of route to west away from Poplar River traditional use areas
- ❑ Moved route further to the west to avoid sensitive sites



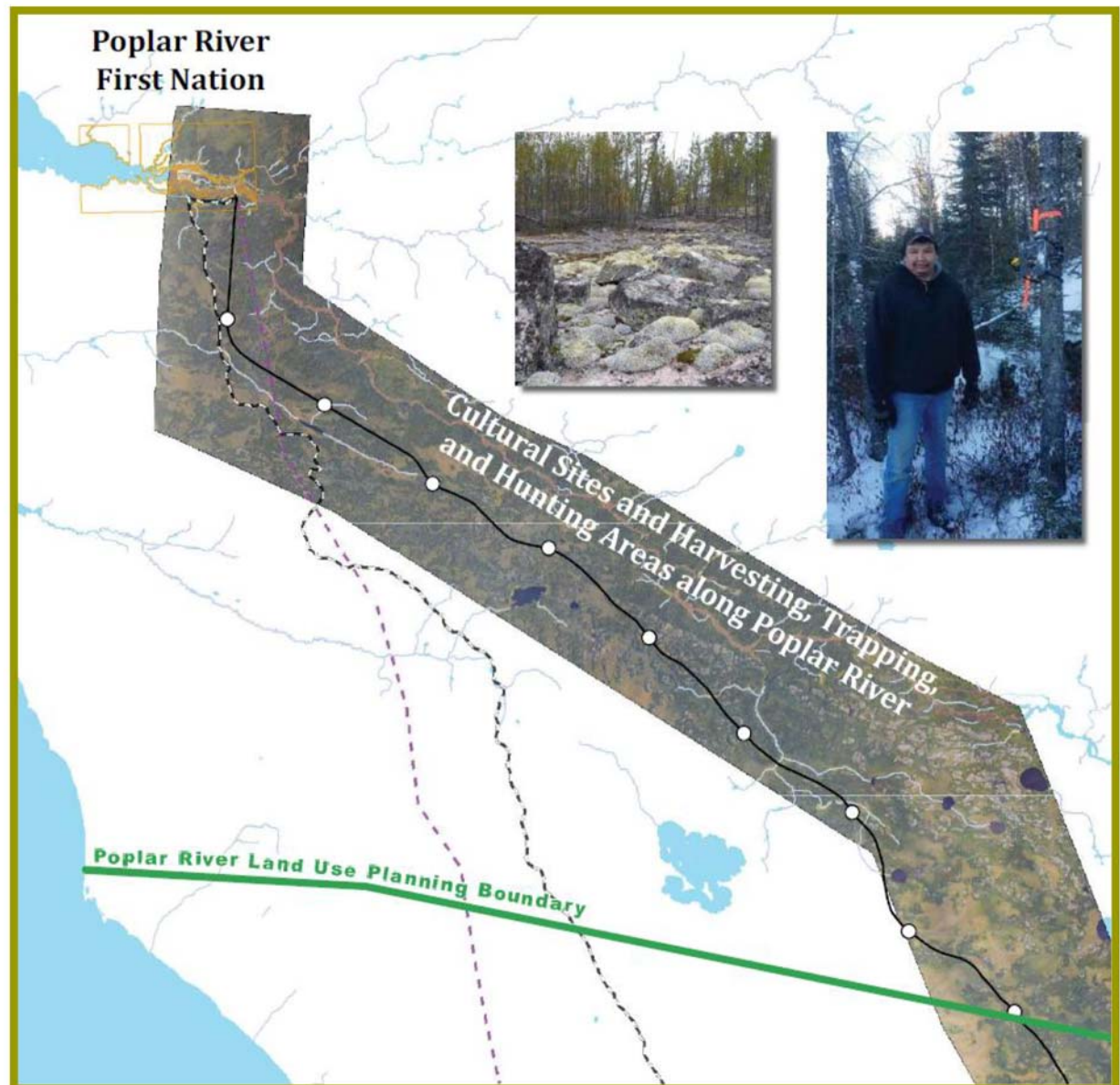
# Evolution of Road Route Refinements

- ❑ Moved route from muskeg areas near Lake Winnipeg further inland for constructability
- ❑ Moved portion of route to west away from Poplar River traditional use areas
- ❑ Moved route further to the west to avoid sensitive sites
- ❑ **Moved portion of route to east away from sensitive habitat and traditional use areas near Etomami River**



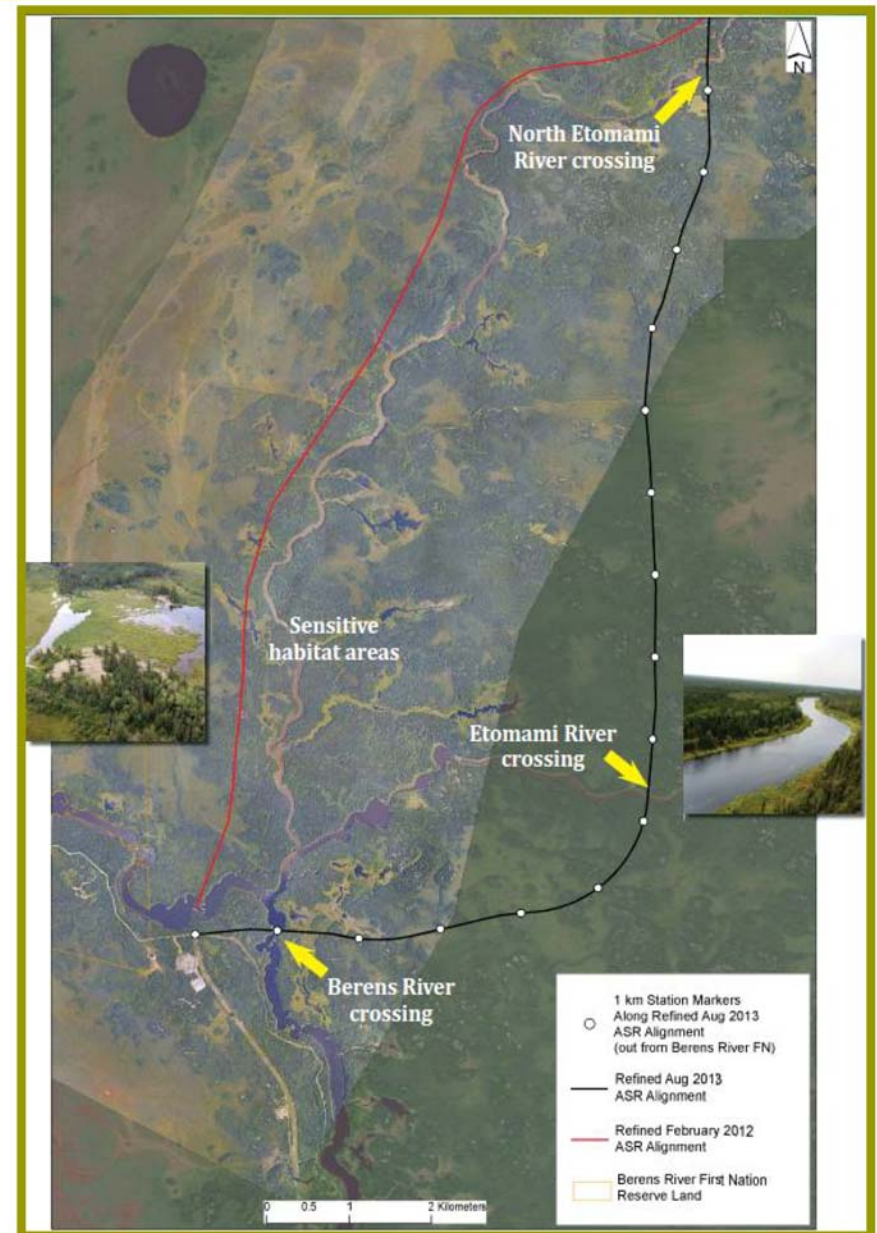
## Summary of Road Route Refinements – Poplar River

- Moved portion of route west to avoid Poplar River
  - Harvested plants
  - Cultural /sacred sites
  - Traditional land use
- Moved portion of route further west to avoid sensitive sites identified during baseline studies and discussions with elders
- Avoids muskeg and wetlands along shoreline route and winter road



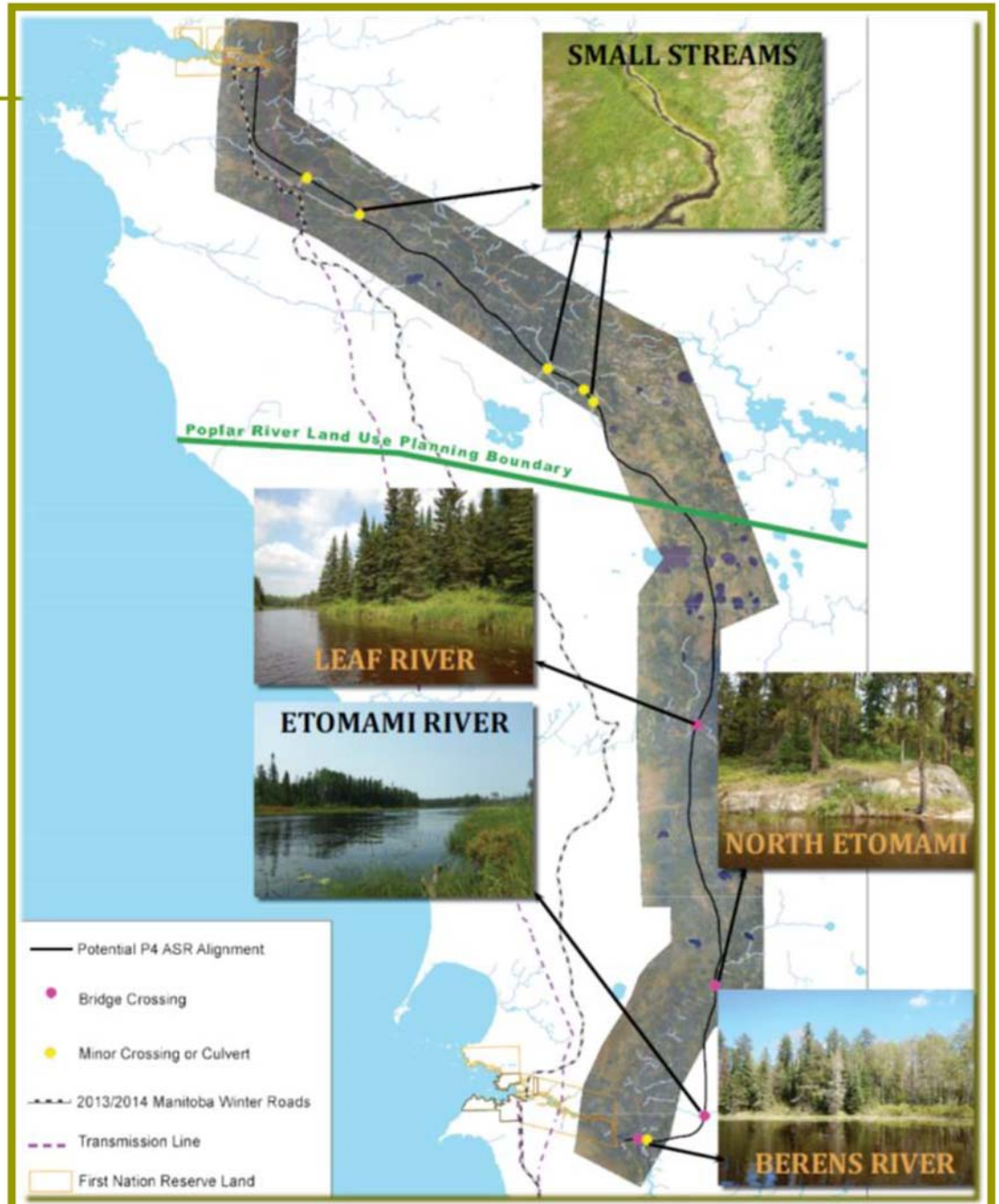
# Summary of Road Route Refinements - Berens River

- Realigned road to avoid:
  - Habitat
  - Traditional land use areas
  
- Moved portion of route further east to avoid Etomami valley
  
- Requires additional river crossing sites
  
- Avoids muskeg and wetlands along shoreline route and winter road



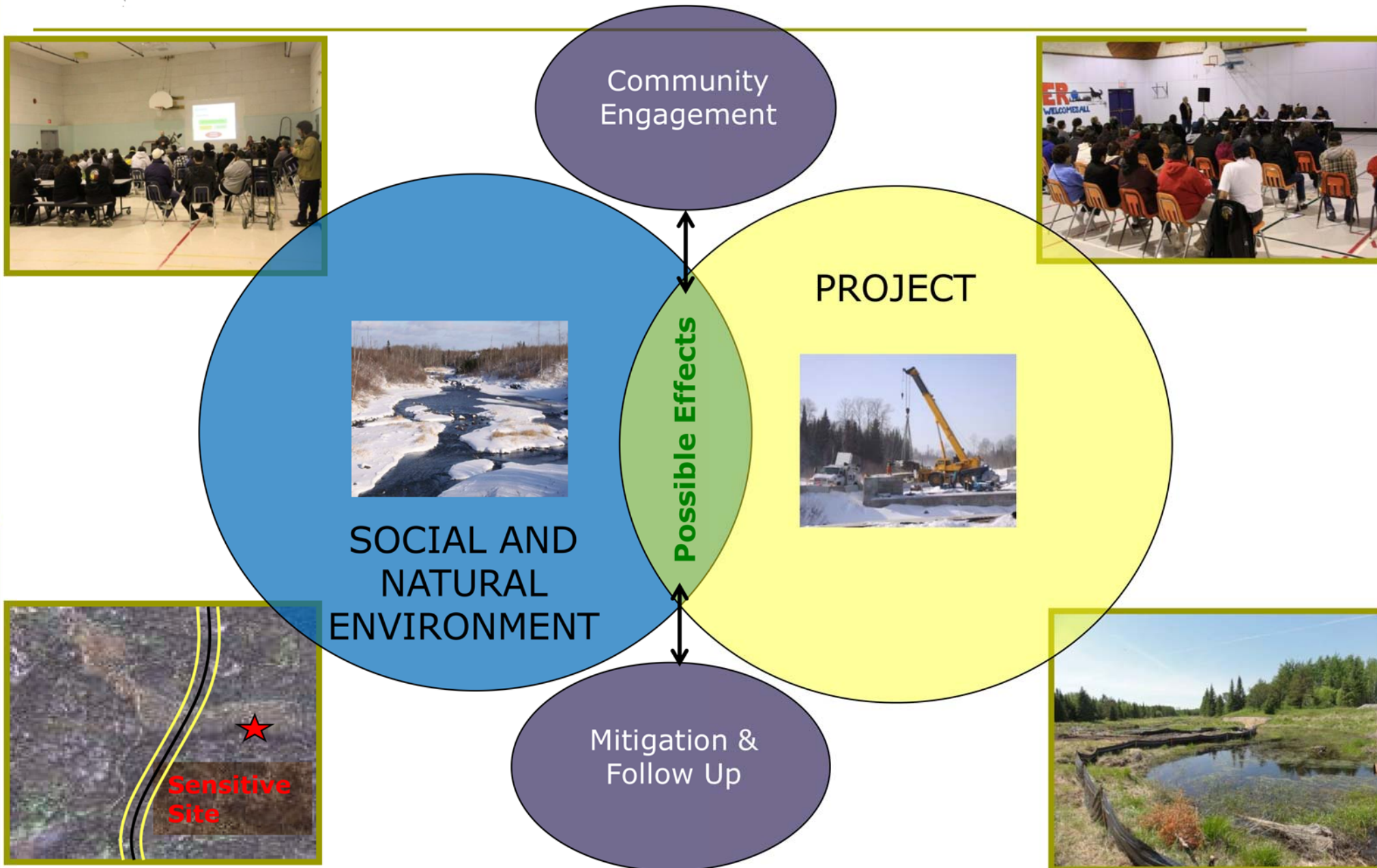
# River Crossings

- Revised route will require additional river crossing sites
  - More crossings, but away from sensitive community areas
  
- Four bridge crossings:
  - Berens River
  - Etomami River
  - North Etomami River
  - Leaf River
  
- Six minor crossings or culverts



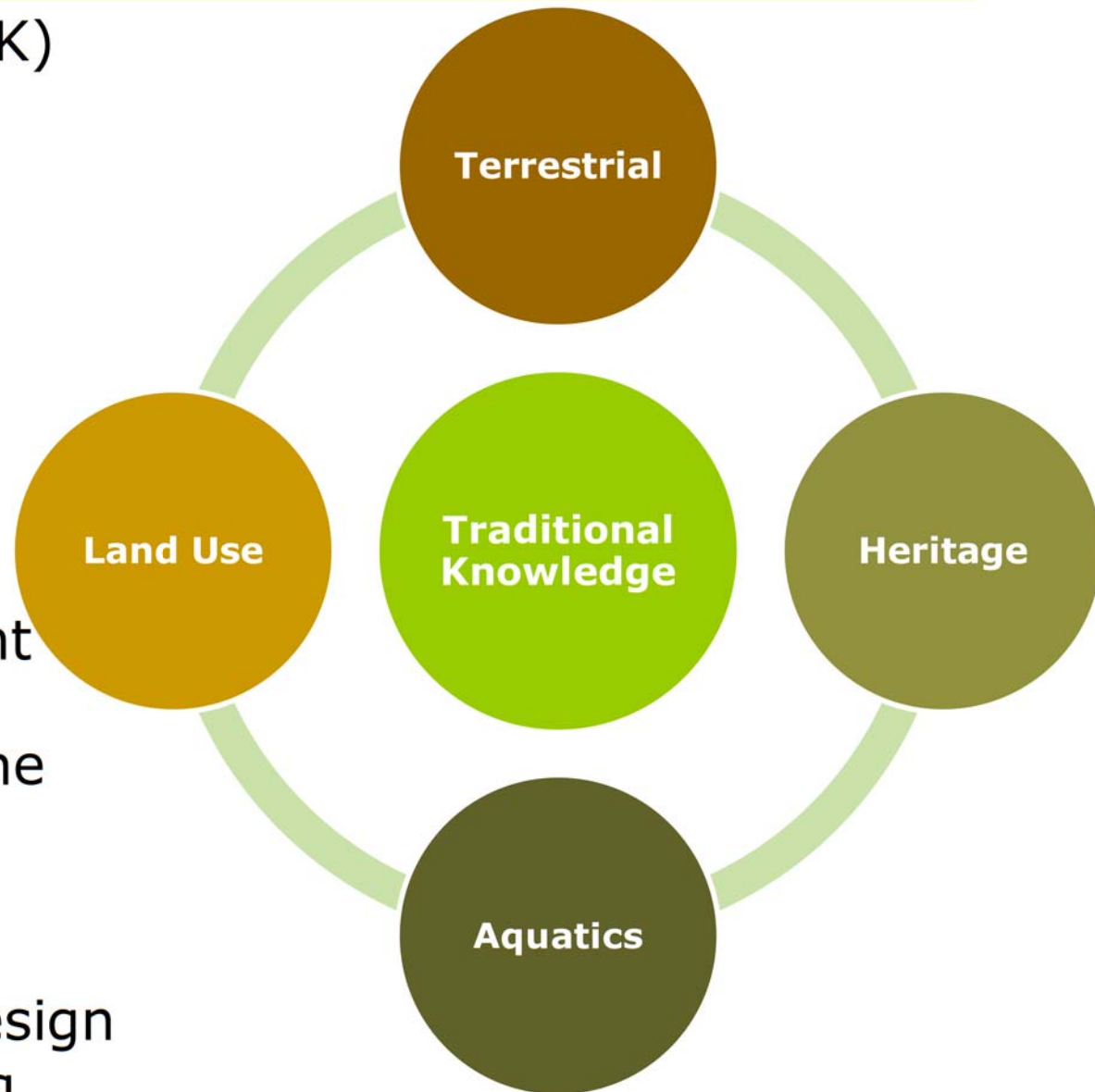


# What is Environmental Assessment?



# Baseline Data

- ❑ Traditional Knowledge (TK)
- ❑ Biophysical studies to augment TK studies
  - Vegetation
  - Wildlife surveys
  - Archaeological studies
  - Fisheries and habitat
- ❑ Used to confirm alignment
- ❑ Provide information for the Environmental Impact Assessment
- ❑ Referenced for project design and construction planning

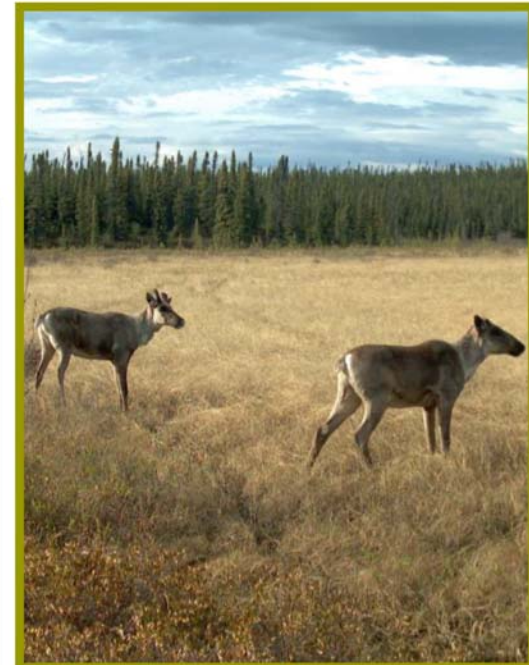


# Wildlife – Trapper Program

- ❑ Program started winter 2013/2014
- ❑ 3 trappers from Poplar River
- ❑ Trappers are recording:
  - Fur harvest information
  - Weather conditions
  - Animal tracks and sign
  - Collecting samples



- ❑ Identify important habitat
- ❑ Identify presence of protected species
- ❑ Incorporate local knowledge
- ❑ Evaluate movement relative to existing roads, transmission lines, cut lines, etc.
- ❑ Predator/prey relationships
- ❑ Focus on caribou with additional species data collected, including:
  - Furbearers (trapped species)
  - Moose
  - Wolves



# Wildlife – Valued Components

- **Important for local community cultural, traditional, and economic activities & values**

- **Big Game:**

- Caribou & Moose



- **Fur-bearing species:**

- Marten
- Lynx
- Wolf
- Beaver



- **Birds:**

- Raptors / Birds of Prey (eagles, osprey, hawks, owls)
- Waterfowl (geese, ducks)
- Migratory birds (e.g. songbirds)
- Game birds (grouse, partridge)



# Aquatic – Valued Components

- ❑ **Important for local community cultural, traditional, and economic activities & values**
- ❑ **Aquatic habitat**
- ❑ **Harvested fish species:**
  - Walleye / Pickerel
  - Northern Pike / Jackfish
  - White Sucker
  - Lake Whitefish
  - Lake Sturgeon

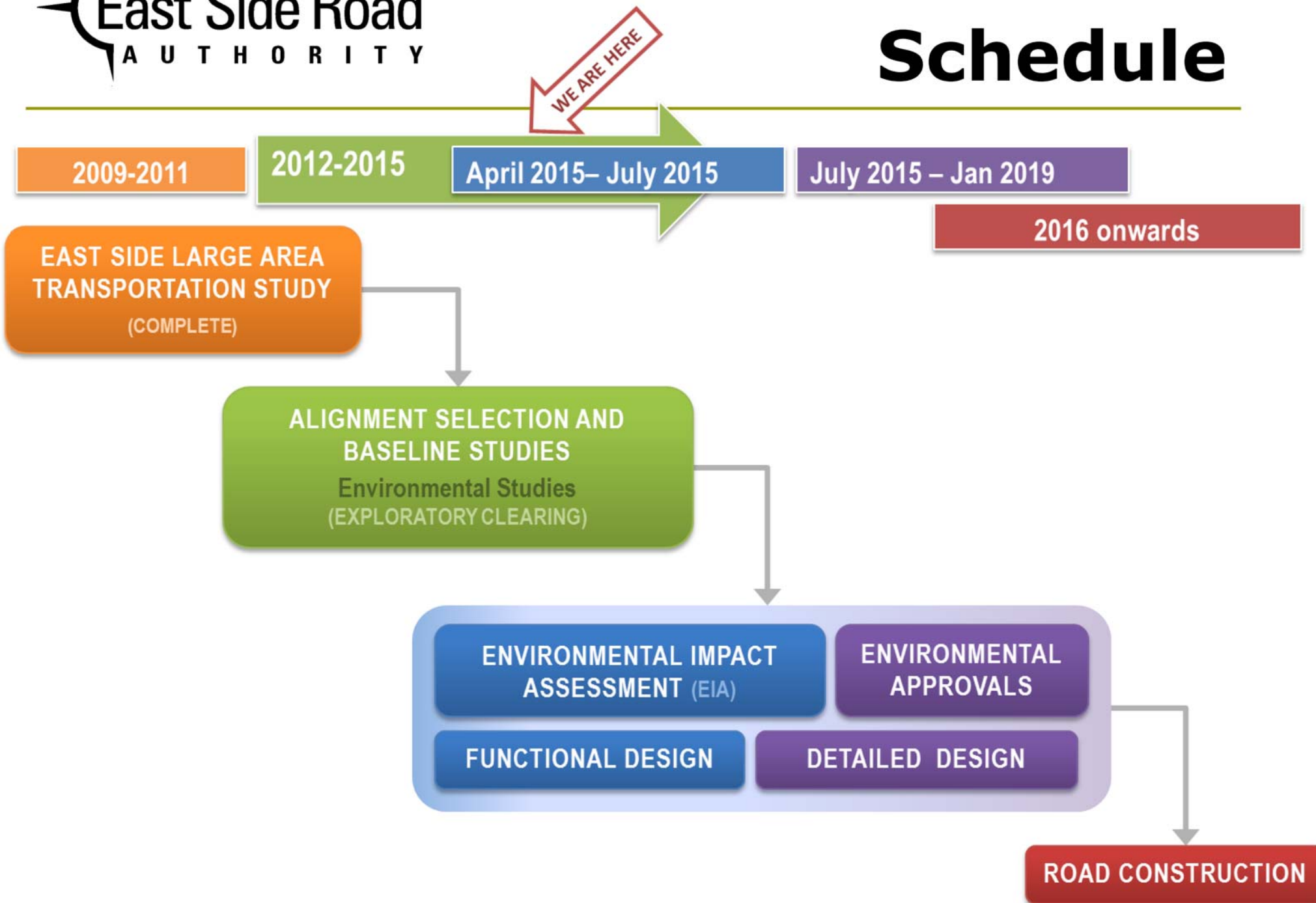


# Cultural - Valued Components

- Input from
  - Communities
  - Elders
  - Archeological studies
  
- Cultural and archeological sites
  
- Areas important for community health and well-being
  
- Harvesting of edible, medicinal, and cultural plants
  
- Trapping & hunting



# Schedule





# Table Talks!

- We want to hear and learn from you
- Write on boards what is important to you, and what should be considered

## We will be back to meet with you to discuss the following:

- **Late Spring 2015:** To review potential effects of the project and identify how these effects may be addressed
- **Early Summer 2015:** To confirm findings of the environmental assessment with the community

***Please stay and talk with us!***



***Thank you for your participation!***

**Contact Information**

**The East Side Road Authority**

*Phone: (204) 945-4900*  
*Toll-Free 1-866-356-6355*  
*Fax: (204) 948-2462*



**Annex A2-10:**  
Display Boards – Poplar River First Nation  
Community Meeting (Round 4)

---

# Welcome!

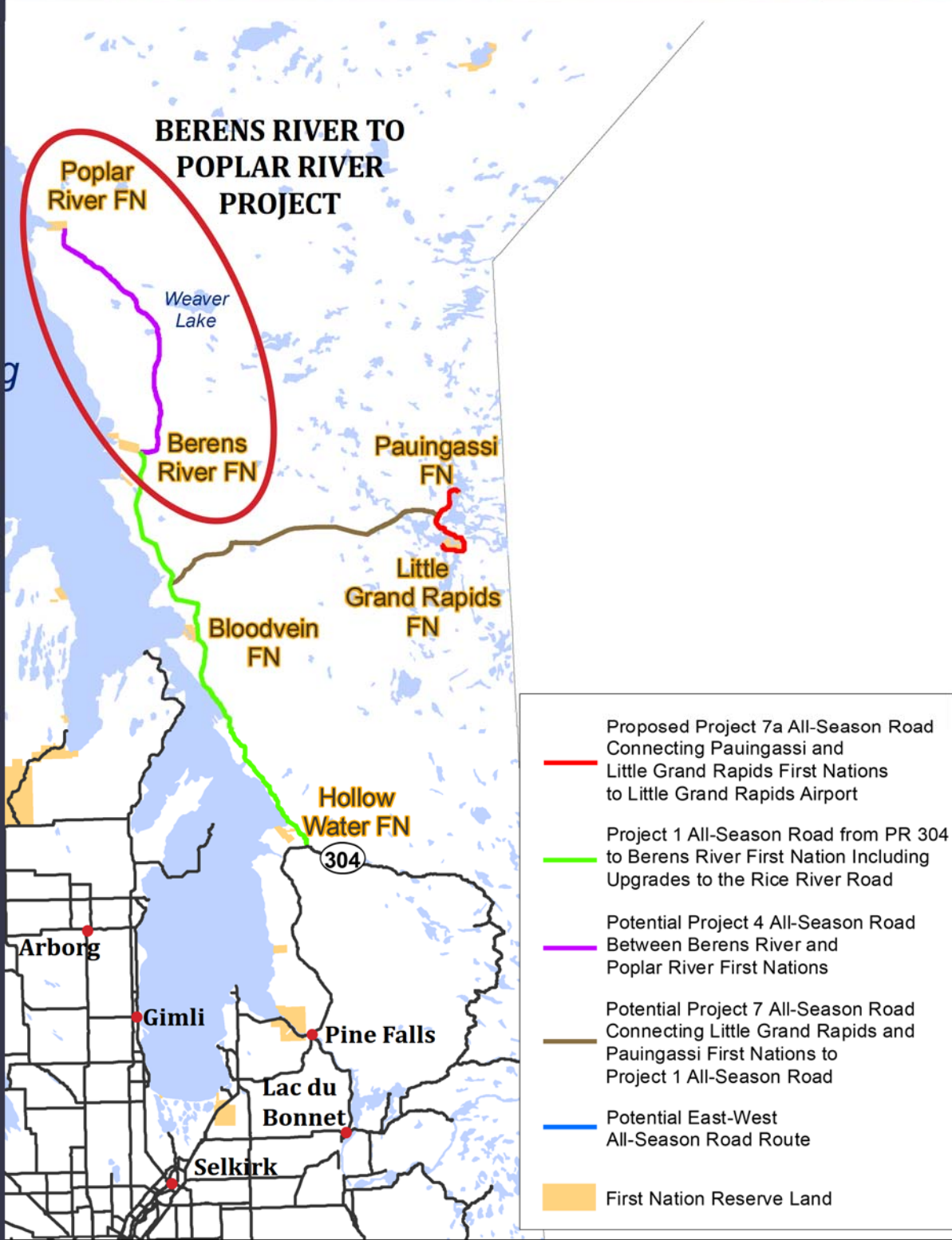


to the **East Side Road Authority**  
**Community Meeting**

for the **Berens River to**  
**Poplar River All-Season Road**

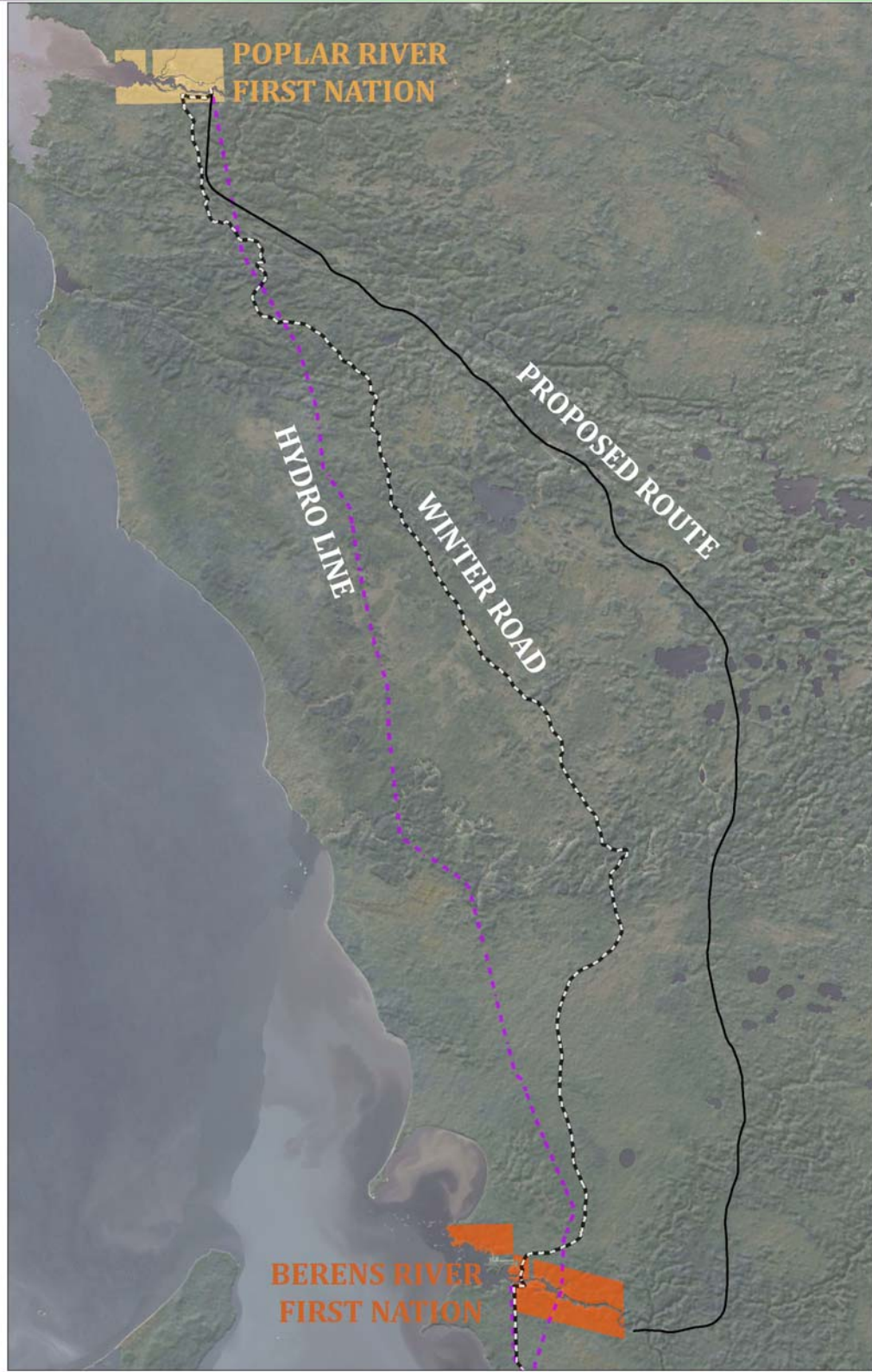
# BERENS RIVER TO POPLAR RIVER ALL-SEASON ROAD

EAST SIDE ROUTE MAP



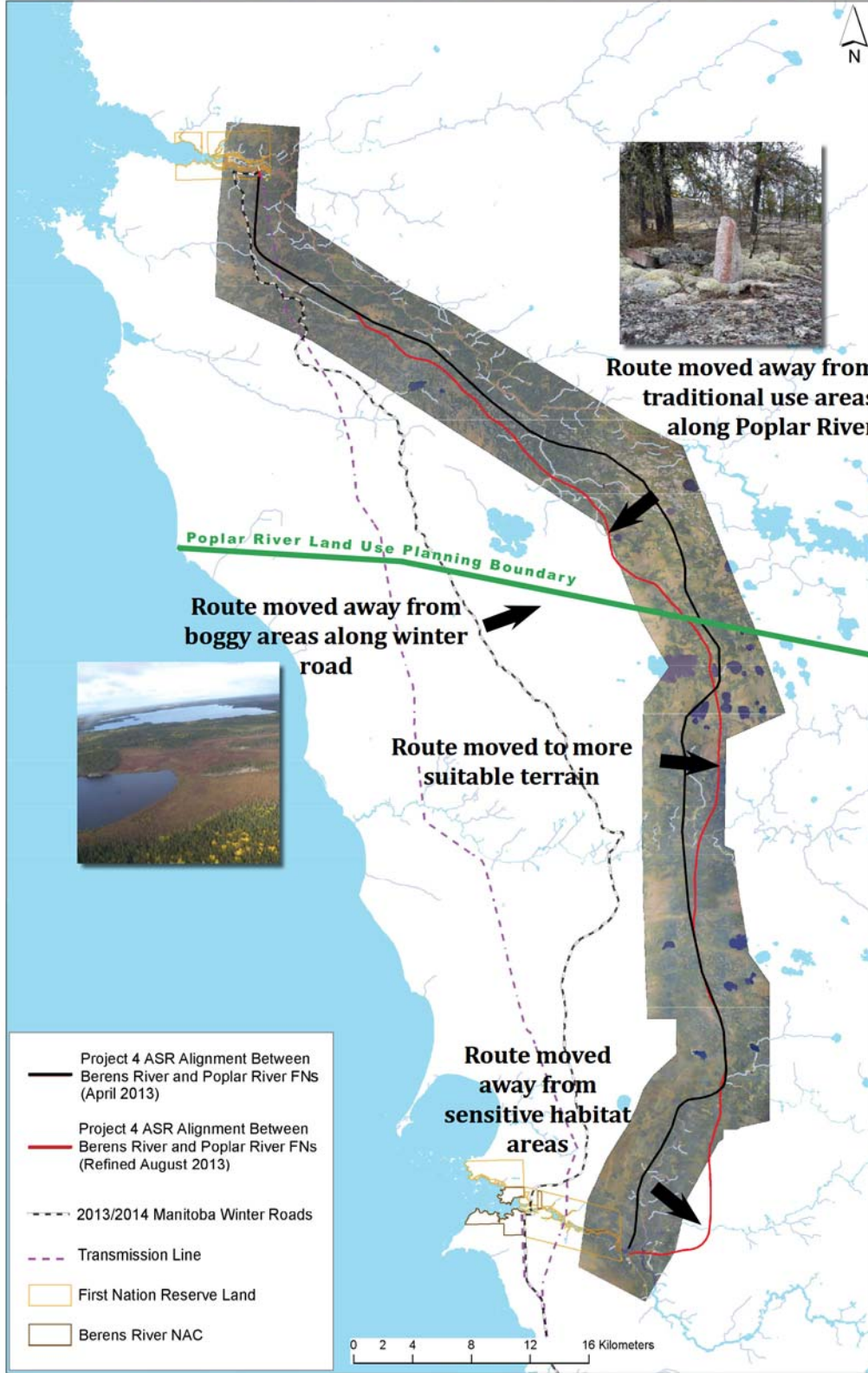
# BERENS RIVER TO POPLAR RIVER ALL-SEASON ROAD

## PROJECT AREA



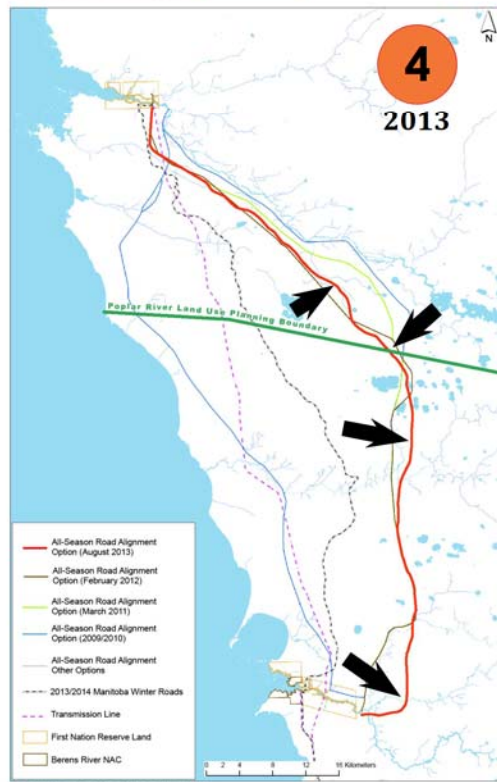
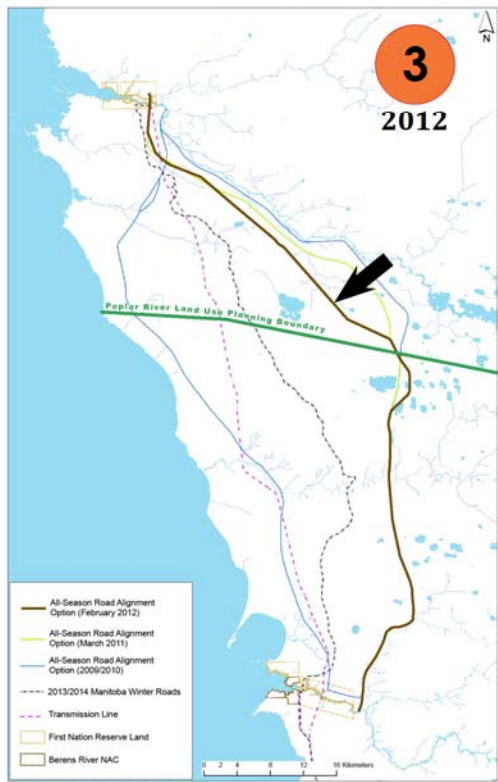
# BERENS RIVER TO POPLAR RIVER ALL-SEASON ROAD

## ALIGNMENT FACTORS



# BERENS RIVER TO POPLAR RIVER ALL-SEASON ROAD

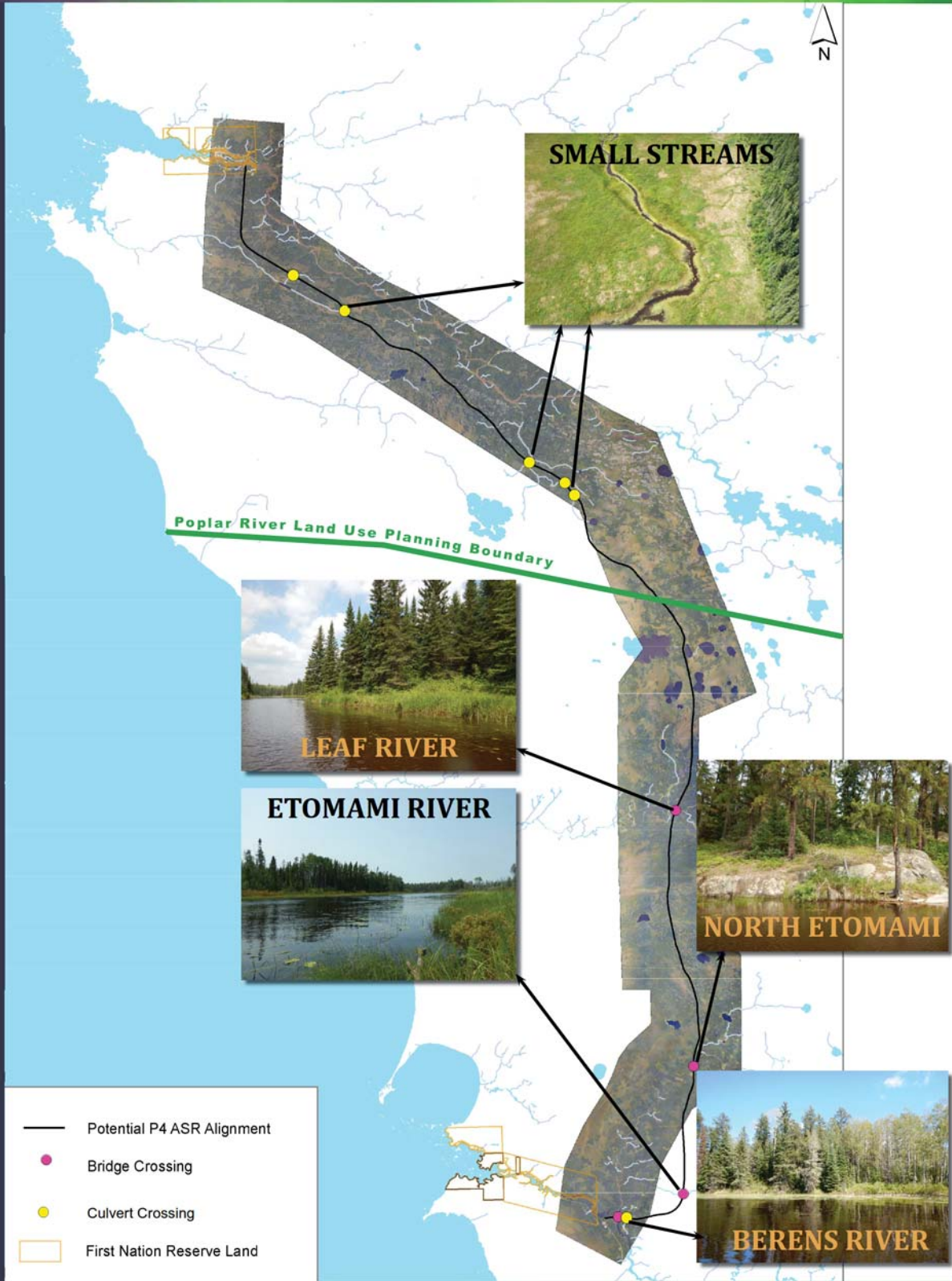
## ALIGNMENT HISTORY





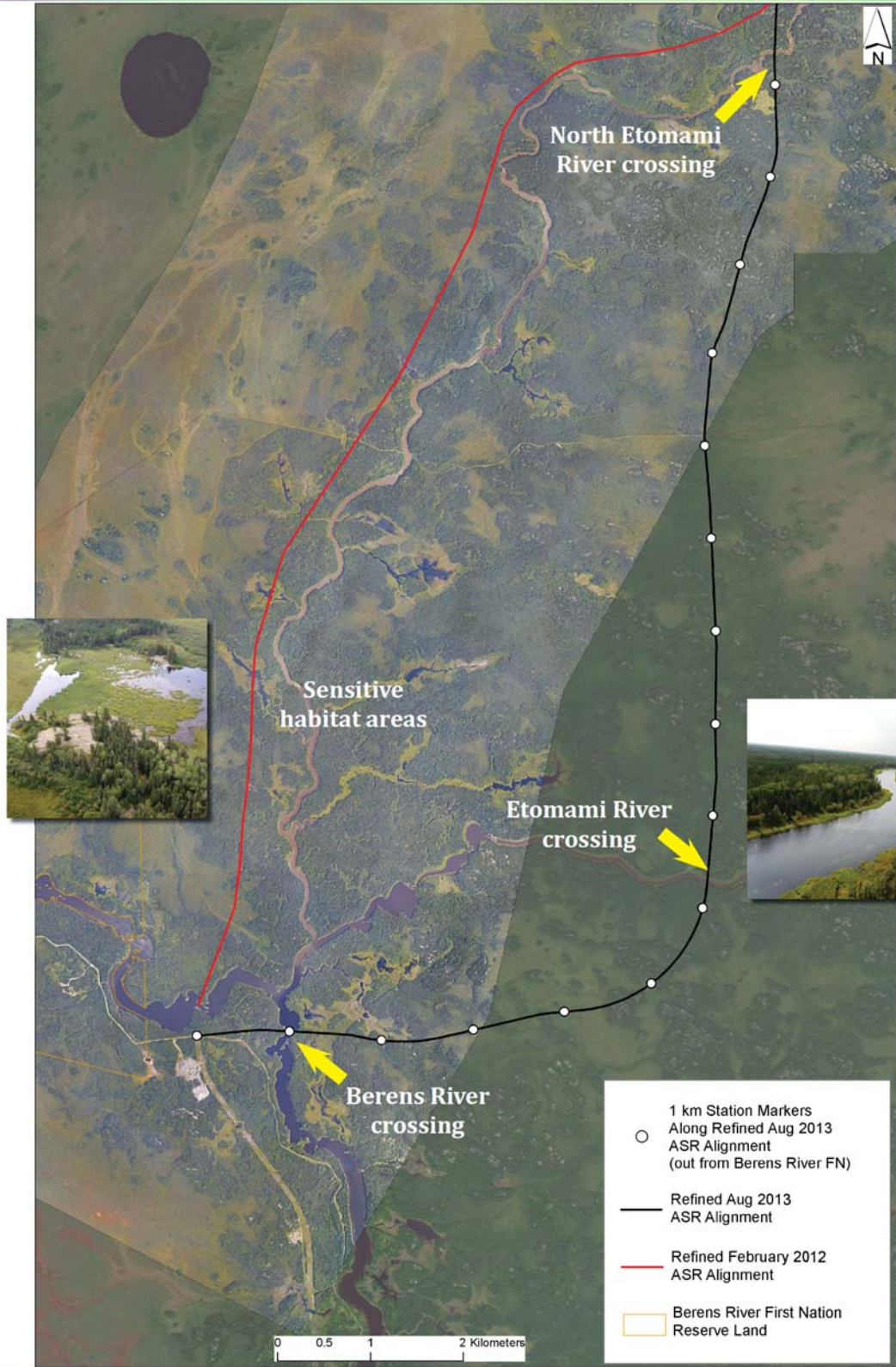
# BERENS RIVER TO POPLAR RIVER ALL-SEASON ROAD

## WATER CROSSINGS



# BERENS RIVER TO POPLAR RIVER ALL-SEASON ROAD

## BERENS RIVER AREA



# BERENS RIVER TO POPLAR RIVER ALL-SEASON ROAD

# POPLAR RIVER AREA















**Thank you for coming!**



For more information contact

**1-866-356-6355**

**[www.eastsideroadauthority.mb.ca](http://www.eastsideroadauthority.mb.ca)**

