

Greenstone Mine

Current Use of Lands and Resources for Traditional Purposes Federal Follow-Up Monitoring Annual Report

(To satisfy Federal EIS Conditions 6.1, 6.2, 6.9)

OP-GGM-EV-136-0004_0

December 30, 2024


Date	Rev	Status		Prepared By	Checked By	Approved By
12/30/2024	0	IFU	Signature:	N/A	N/A	
			Name:	GGM	GGM	Braeden Connor Greenstone Mine

Table of Contents

1	Introduction	3
2	Review of Applicable Conditions	3
3	Follow-Up Program	5
3.1	Condition 6.1 – Southwest Arm Access.....	5
3.2	Condition 6.2 – Goldfield Road and Goldfield Creek Access.....	7
3.3	Monitoring Program	7
4	Monitoring Results.....	9
5	Conclusions	9

List of Figures

Figure 1:	Site Plan	4
Figure 2:	East Service Road	6

List of Tables

Table 3.1:	Monitoring Program Details.....	8
------------	---------------------------------	---

1 Introduction

Greenstone Gold Mines GP Inc. (GGM) has constructed, is operating, and will ultimately decommission/close a new open pit gold mine, process plant, and associated ancillary facilities, collectively known as the Greenstone Mine (the Mine), formerly the Hardrock Project. The Mine site is located at 7921 Highway 11, within the municipality of Greenstone, near the intersection of Highway 11 and Highway 584. Key mine components of the project development area (PDA) are an open pit, waste rock storage areas, overburden storage areas, ore stockpile, ore crushing, and ore storage activities, process plant, water management facilities, tailings management facility, power plant and associated infrastructure, and explosives facility. Ancillary Mine components are buildings, service water supply and associated infrastructure, sewage and effluent treatment plant, site roads, watercourse crossings, realignments, and habitat compensation/offsets, onsite pipelines and piping, fuel and hazardous materials storage, aggregate sources, and temporary camp. Refer to Figure 1 for the mine site plan. The overall Mine development schedule consists of the following main phases:

- Operation: Years 1 to 15, with Year 1 representing a transition from construction to operation; and
- Closure: Years 16 to 20 for Active Closure and Years 21 to 36 for Post-Closure.

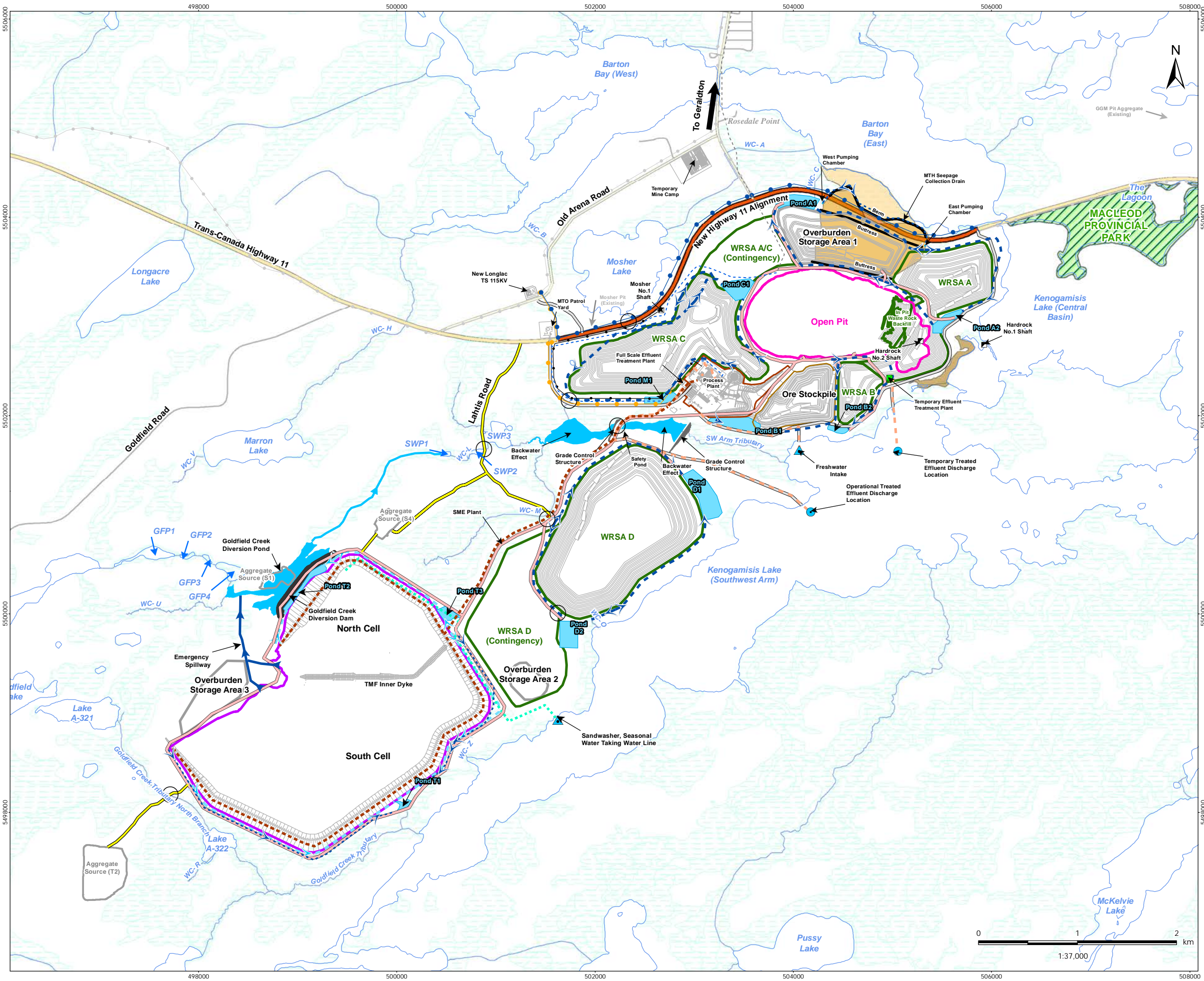
A federal Environmental Impact Statement (EIS) was required for the Mine under the *Canadian Environmental Assessment Act* (CEAA 2012). The federal EIS Decision statement was issued on December 13, 2018 and amended on February 10, 2021 to account for detailed design of the Mine. Another amendment to the Decision Statement is currently being processed by the Impact Assessment Agency of Canada (IAAC), who issued a draft Decision Statement on June 1, 2024 for consultation to incorporate the temporary bypass channel.

2 Review of Applicable Conditions

The Current Use of Lands and Resources for Traditional Purposes Follow-Up Plan (HP-GGM-EV-130-0046; 'the Plan') was developed to address condition 6.9 of the federal Decision statement:

Develop, prior to construction and in consultation with Indigenous groups, a follow-up program to verify the accuracy of the environmental assessment and determine the effectiveness of mitigation measures as it pertains to the adverse environmental effects of the Designated Project on the current use of lands and resources for traditional purposes, including access to the Southwest Arm of Kenogamisis Lake referred to in condition 6.1 and access along Goldfield Road and to the Goldfield Creek diversion channel referred to in condition 6.2. The Proponent shall implement the follow-up program during all phases of the Designated Project.

Annual reporting, documented herein, is required under the Plan and covers the period of October 1, 2023 through September 30, 2024 (i.e., the 2024 monitoring period) to satisfy the requirements of the Plan



- Legend**
- | | |
|--|---|
| <ul style="list-style-type: none"> ● Discharge Location ■ Existing Mine Shaft ▲ Freshwater Intake ■ Temporary Effluent Treatment Plan ○ Watercrossing — Access Road — Construction Access Road — Diversion Channel — Emergency Spillways — Haul Road — Potable Water Pipeline — Pipeline (Intake and Discharge) — 44 kV Distribution Line — 12.5 kV Distribution Line — 115 kV Transmission Line — Seepage Collection Ditch — Subsurface Seepage Collection System — Contact Water Collection Ditch — Tailings Pipeline and 13.8 kV Distribution Line — Water Line — Aggregate Source — Collection Ponds — Open Pit - Full Extent — Ore Stockpile — Process Plant Area — Tailings Management Facility — Waste Rock Storage Area | <ul style="list-style-type: none"> — Highway Realignment — New Highway 11 Alignment — Existing Features* — Highway — Major Road — Local Road — Existing Power Line — Existing Potable Water Pipeline — Watercourse — Provincial Park — Waterbody — Wetland (Eco-Site Based) — Historical Tailings Areas — Historical Hardrock Tailings — Historical MacLeod High Tailings — Historical MacLeod Low Tailings |
|--|---|

Notes

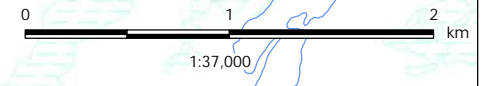
1. Coordinate System: NAD 1983 UTM Zone 16N
2. Base features produced under license with the Ontario Ministry of Natural Resources © Queen's Printer for Ontario, 2013.
- * Existing Features have been removed in the PDA and do not reflect current conditions.

December 2022
160961223

Client/Project
Greenstone Gold Mines GP Inc. (GGM)
Hardrock Project

Figure No.
1

Title
Optimized Site Plan
(Current as of May 2019)



V:\01609\active\160961223\drawing\WXD\160961223_Fig_1_2_OptimizedSitePlan_20221213.mxd
Revised: 2022-12-13 By: dhanvey

3 Follow-Up Program

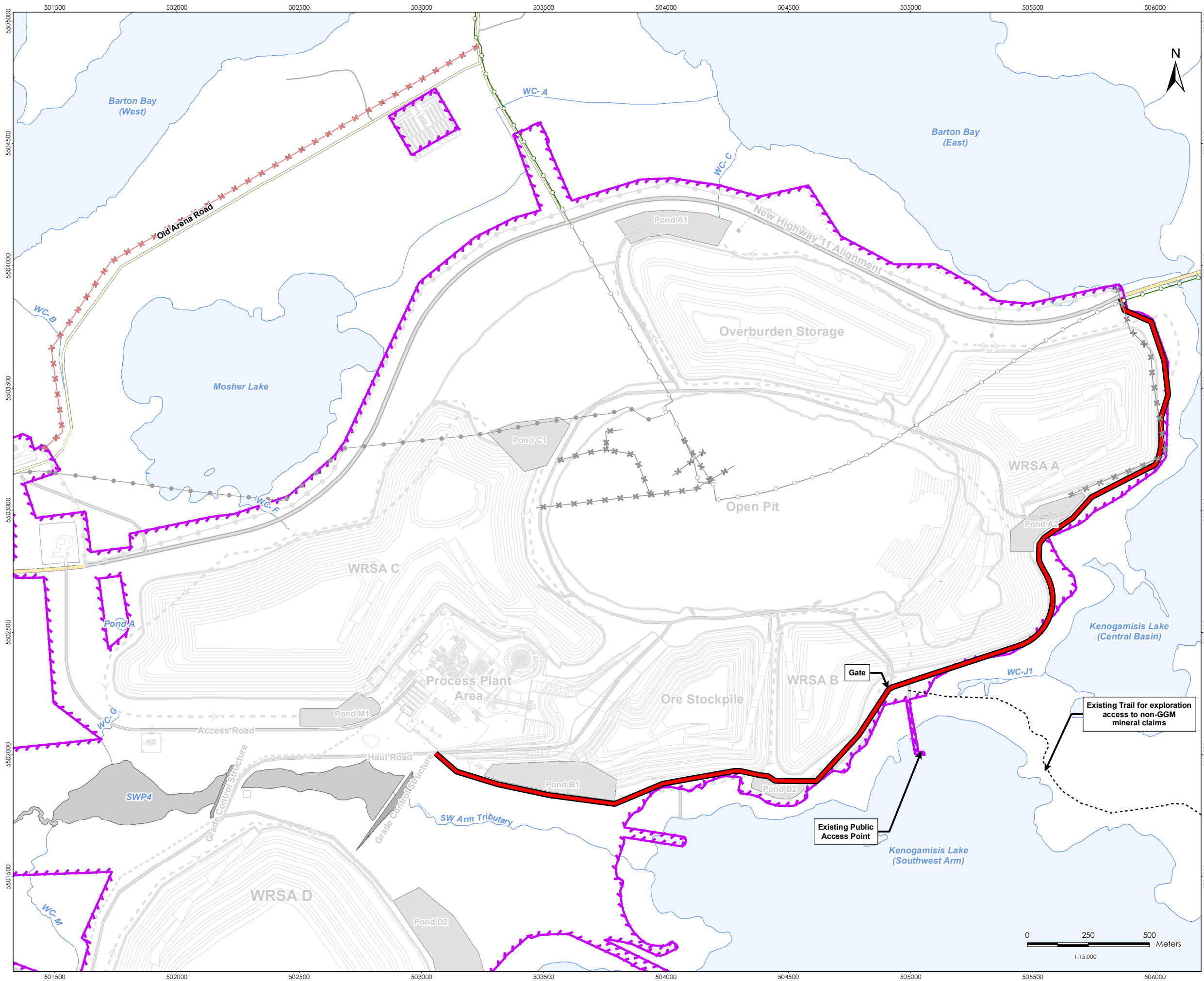
GGM has developed partnership agreements with the following Indigenous groups: Animbiigoo Zaagi'igan Anishinaabek (AZA), Aroland First Nation (AFN), Ginoogaming First Nation (GFN), Long Lake #58 First Nation (LL#58), and Métis Nation of Ontario (MNO). Through these agreements, Environmental Advisory Sub-Committees (EASs) and Implementation Committees (ICs) have been established. The Follow-Up Program is implemented through the use of these established committees.

3.1 Condition 6.1 – Southwest Arm Access

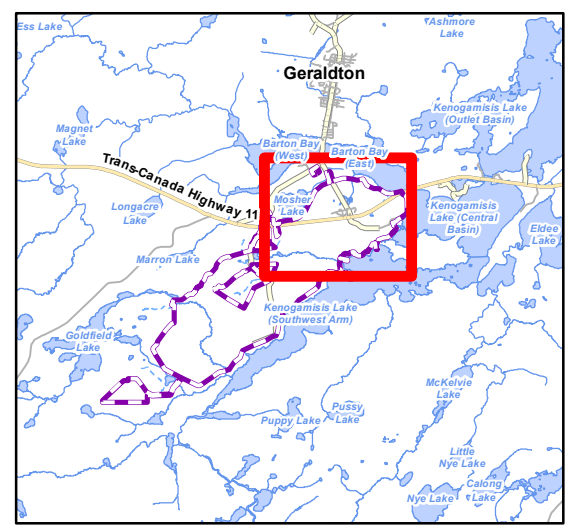
As specified in Condition 6.1 of the federal Decision Statement:

“The Proponent shall establish, in consultation with Indigenous groups and prior to undertaking construction activities that will restrict access to the Southwest Arm of Kenogamisis Lake, alternate unrestricted access to the Southwest Arm of Kenogamisis Lake and shall maintain that alternate access during all phases of the Designated Project, to the extent that such access is safe”.

In follow up to a commitment made in the EIS/EA, GGM has included a public access road from Highway 11 along the east side of the PDA to maintain access to the Southwest Arm of Kenogamisis Lake (see Figure 1 and Figure 2). This EA commitment outcome was documented and consulted on with the Outcome of Detailed Engineering Design Optimization Report (April 30, 2019). The Optimization Report was circulated to Indigenous groups and no concerns were identified.



- Legend**
- Project Development Area (Final EIS/EA)
 - East Access Road (Added Post-Final EIS/EA)
 - Existing Trail
 - Highway
 - Major Road
 - Local Road
 - Existing Power Line
 - Existing 44 kV Distribution Line to Remain
 - Existing 12.5 kV Distribution Line to Remain
 - Existing 115 kV Transmission Line to be Removed
 - Existing 44 kV Distribution Line to be Removed
 - Existing 12.5 kV Distribution Line to be Removed
 - Watercourse
 - Waterbody



Notes

1. Coordinate System: NAD 1983 UTM Zone 16N
2. Base features produced under license with the Ontario Ministry of Natural Resources © Queen's Printer for Ontario, 2013.

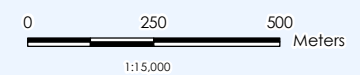
May 2019
160961223

Client/Project
Greenstone Gold Mines GP Inc. (GGM)
Hardrock Project

Figure No.
2

Title

East Access Road



V:\01609\active\160961223\160961223_Fig_2_2_EastAccessRoad_20190506.mxd
 Revised: 2019-05-07 By: dhanvey

3.2 Condition 6.2 – Goldfield Road and Goldfield Creek Access

As specified in Condition 6.2 of the federal Decision Statement:

“The Proponent shall maintain unrestricted access along Goldfield Road during all phases of the Designated Project and to the Goldfield Creek diversion channel starting when the Proponent has completed progressive reclamation referred to in condition 4.2 and until the end of decommissioning, to the extent that such access is safe”.

Goldfield Road is located outside of the PDA, and there continues to be no anticipated effects on Goldfield Road access as a result of the Mine.

For the Goldfield Creek diversion channel, the main access point of Lahti’s Road remains closed during operations due to safety reasons (EIS/EA, Chapter 16). Lahti’s Road was closed to the public during the reporting period. Signage remains posted by GGM around the perimeter of the PDA, including the shoreline of Kenogamisis Lake, to alert local land and resource users of the presence of the Mine. At Closure, Lahti’s Road is planned to be re-opened to public traffic up to the point of the Goldfield Creek diversion (Closure Plan, Section 9.7 and 11.1). At Closure, GGM will work with Indigenous groups via their respective EAS and IC to determine more precisely when Lahti’s Road will be re-opened. During operations, GGM will continue to facilitate site tours for representatives of the Indigenous groups to access the Goldfield Creek diversion channel to observe its establishment and progress.

3.3 Monitoring Program

GGM is committed to ongoing dialogue with Indigenous groups with respect to monitoring effects of the Mine on current use for traditional purposes throughout all Mine phases. GGM’s Feedback Protocol and agreements established with the Indigenous groups guide the manner in which GGM carries out its work.

Environmental Technicians and EASs are key mechanisms for communications related to the Current Use Plan, including verifying the accuracy of the environmental assessment and determining the effectiveness of mitigation measures. The EASs include members from local Indigenous groups and meetings are held regularly, per the agreements and as required to support engagement and consultation. The EASs review relevant documentation related to approvals, permitting and reporting, and the meetings provide a forum for community representatives and GGM to discuss environment and community related matters and collaborate to resolve concerns and recommendations. The Environmental Technicians, having a key role in liaising back to their respective communities and advising GGM and the EAS of feedback from their membership, are well-positioned to inform how the implementation of Mine mitigation measures for access are working and if concerns need to be addressed.

In addition, Implementation Committees and Coordinators are utilized. “Implementation Coordinator” or “Coordinator” means the Implementation Coordinator to be appointed by each of the Indigenous groups in accordance with their respective agreement with GGM. Each of the Indigenous groups employs an Implementation Coordinator appointed by, and responsible to the Indigenous group. The Coordinator takes direction from the their respective Council or designate. The Implementation Coordinator is responsible for assisting with the execution of their respective Agreement between the Indigenous group and GGM. The Implementation Coordinator works closely with their community members and Council to ensure that their community can benefit to the greatest extent possible from the Agreement.

GGM and the Indigenous groups work collaboratively on the follow-up program development and implementation:

- GGM leads the sharing of information related to alternate unrestricted access to the Southwest Arm of Kenogamisis Lake, Goldfield Road, and the Goldfield Creek diversion channel. For example, GGM kept the EASs informed on progress made with the development of infrastructure alongside the east access road, in which community representatives on the EAS could report back to their community.
- Environmental Technicians for the Indigenous groups lead the collection and sharing of feedback from community members with GGM related to current use of land. The monitoring program approach is adaptive and depends on areas of interest identified with Indigenous groups, which may change over time.

Table 3.1 outlines the parameters, methodology, location, frequency, timing and duration of monitoring associated with the follow-up program.

Table 3.1: Monitoring Program Details

Performance Objective	Monitoring Parameter	Method	Location	Frequency	Timing	Duration
Accessibility to the Southwest Arm of Kenogamisis Lake	User inputs on ability to access Southwest Arm of Kenogamisis Lake	Environmental Technicians are responsible for obtaining community feedback/concern. These are to be discussed at EAS meetings when raised.	PDA/ LAA	Continuous / ad-hoc	Year- round	All phases of Mine life
Unrestricted access to the use of Goldfield Road	User inputs on ability to access Goldfield Road		LAA	Continuous / ad-hoc	Year- round	All phases of Mine life
Unrestricted access to the Goldfield Creek diversion channel	User inputs on ability touse Lahtis Road to access the Diversion Channel		PDA	Continuous / ad-hoc	Year- round	Closure (Lahti’s road is closed during operations due to safety reasons)

4 Monitoring Results

There have been no changes to access during this reporting period. Lahti's road continues to remain closed to the public due to safety concerns and will remain closed throughout Mine operations. Site tours are scheduled as needed for communities and EASs to view the Goldfield Creek diversion and associated infrastructure.

5 Conclusions

Greenstone Gold Mines has continued to implement the Environmental Assessment Commitments made regarding Current Use of Lands and Resources for Traditional Purposes during the 2024 monitoring period. Ongoing engagement and consultation with Indigenous groups occurred and there were no concerns raised regarding the access of Southwest Arm, Goldfield Road or Goldfield Creek Diversion Channel during the various opportunities through Implementation Committee or Environmental Advisory Sub-Committee meetings.