

Environmental and Social Impact Assessment

Direct Shipping Ore - Howse Property Project



September 2014

Agenda

- ⤿ Objective of the meeting
- ⤿ Presentation of the proponent
- ⤿ Presentation of the Project
- ⤿ Environmental assessment process
- ⤿ Ongoing consultations



Direct Shipping Ore Howse Property Project

HML
Howse Minerals Limited

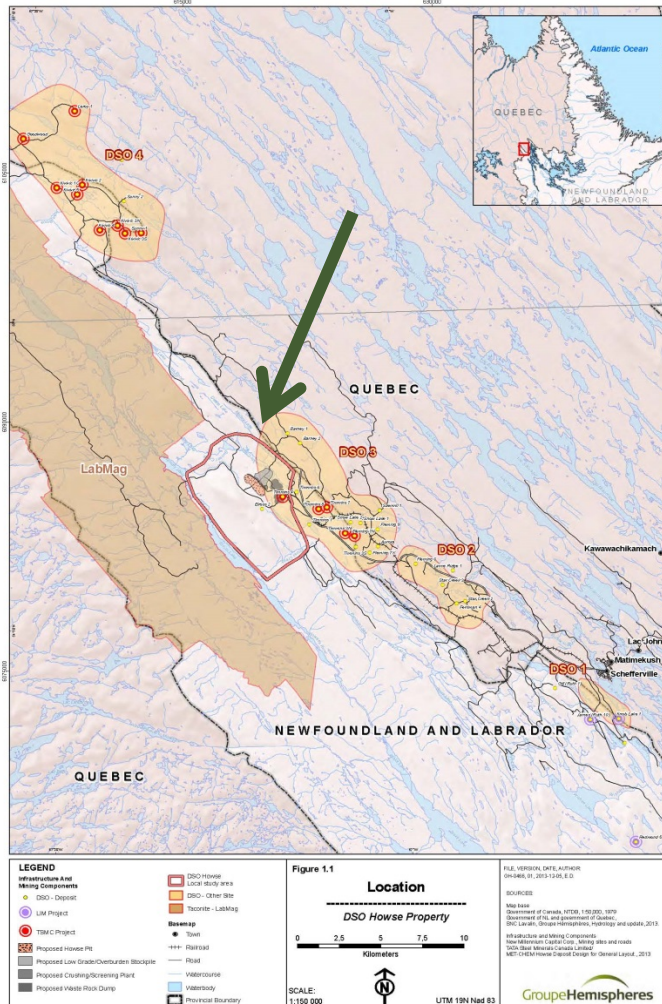


The Proponent: Howse Minerals Limited (HML)

- Wholly-owned subsidiary of TSMC created in August 2013
- TSMC is currently developing the DSO Project in Quebec and Newfoundland & Labrador
- Before the Agreement with HML, LIM owned Howse Property and was targetting to develop it in 2017
- IBA obligations remain the responsibility of LIM under its Unincorporated Joint Venture Agreement with TSMC



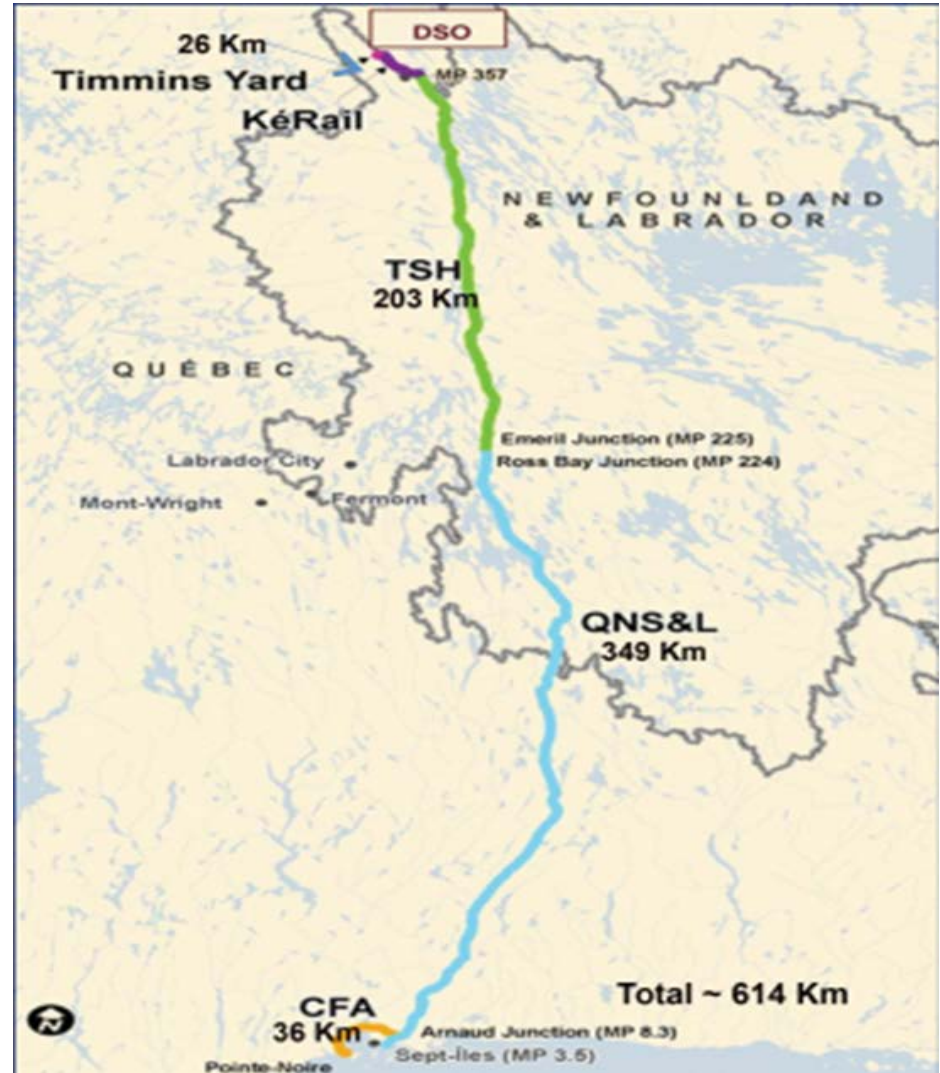
Howse Project



- Howse Property is located along the Labrador Trough, between Irony Mountain (Kauteitinat), Pinette Lake and Timmins 4 (TSMC current site of operation)
- Will be developed with the support of adjacent mining infrastructures (camps, roads, railway, mining equipment).

Howse Project

- The extracted iron ore will be crushed and screened, hauled by truck to the TSMC's DSO Project loading area
- The ore will then be transported by train to Sept-Îles and shipped by boat



Howse Project

Objectives of the Project:

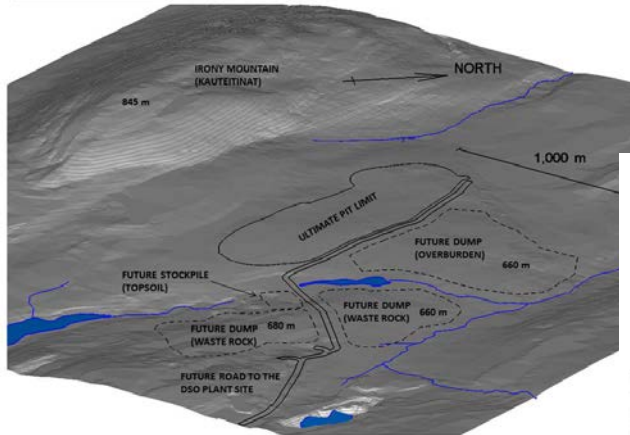
- Maintain TSMC operations: Project 2a and 2b (Goodwood and Sunny and Kivivic deposits) were postponed due to delays in road construction
- Howse Property Project can be brought into production in a relatively short period due to proximity to TSMC's DSO Project and infrastructures in construction

Allows to extend the life-of-mine of the DSO Project and to maintain jobs and contracts

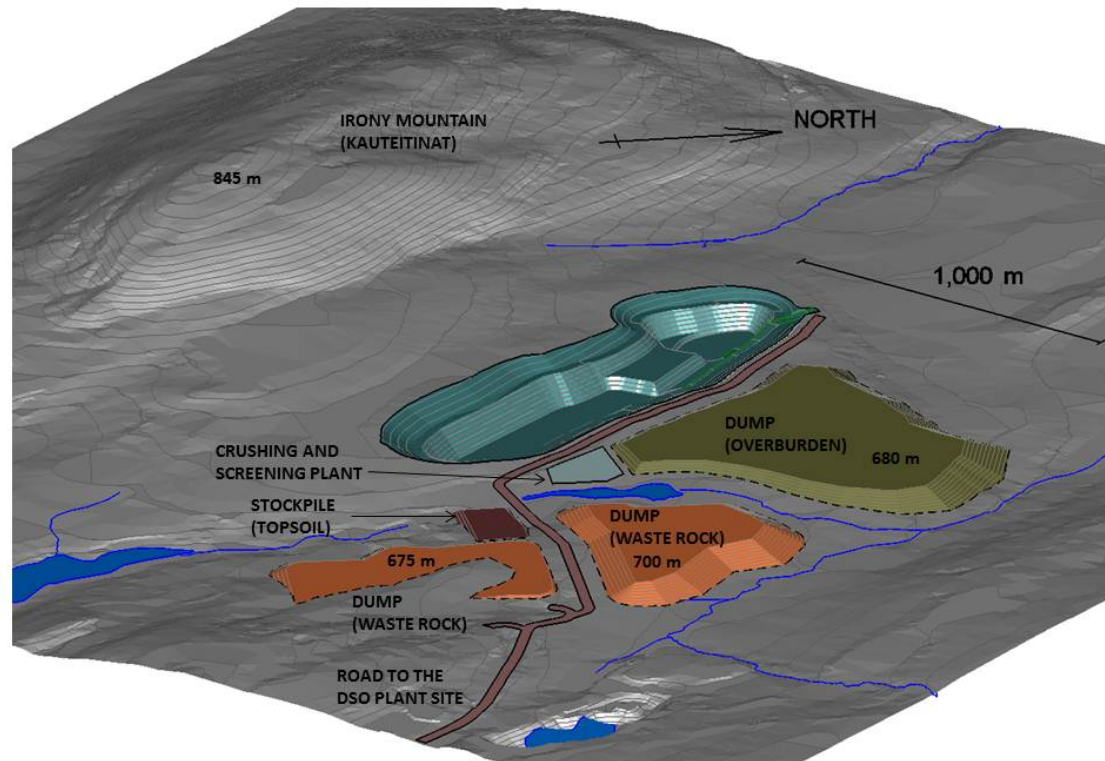


Howse Project

CURRENT SITUATION

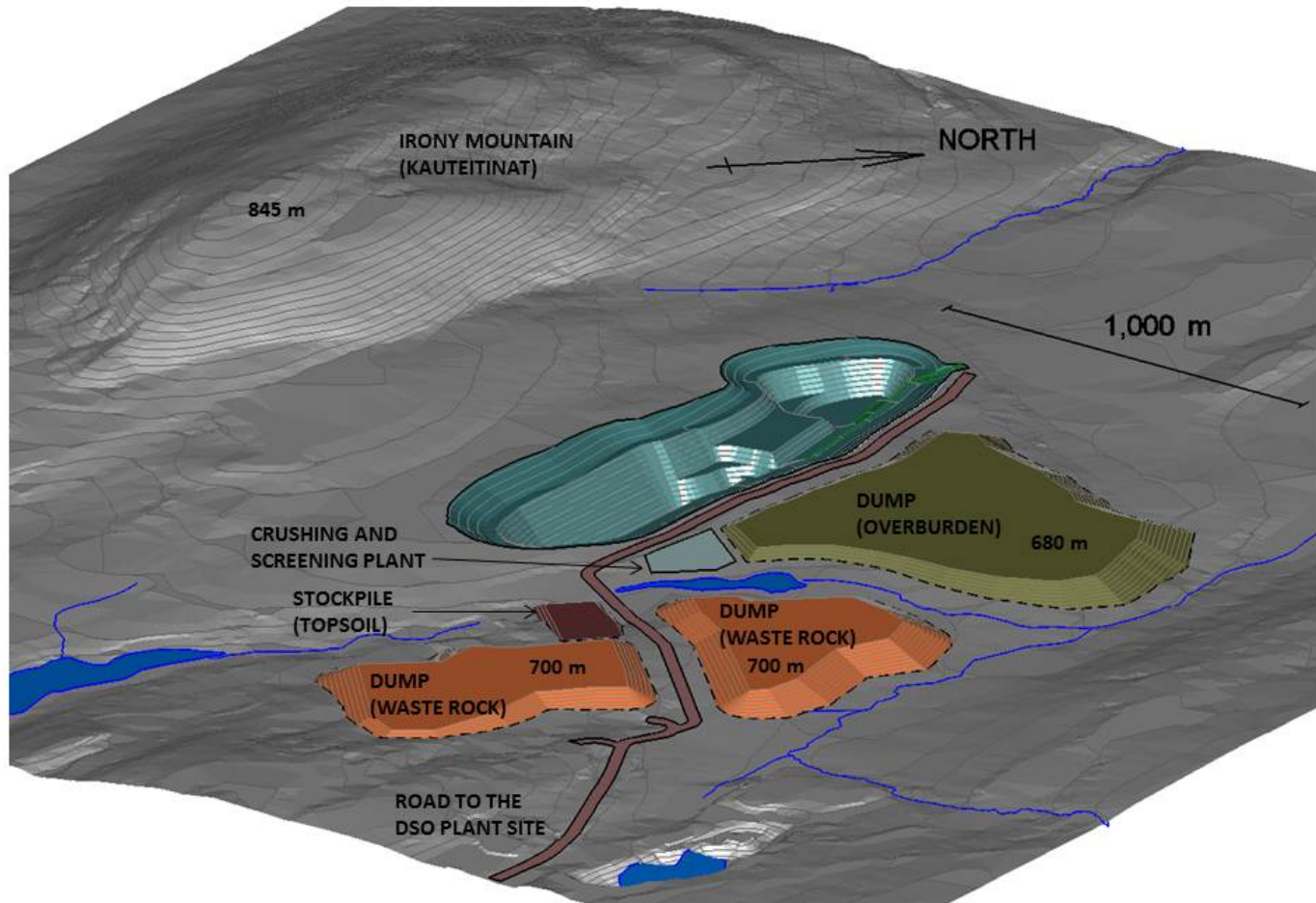


AFTER 7 YEARS



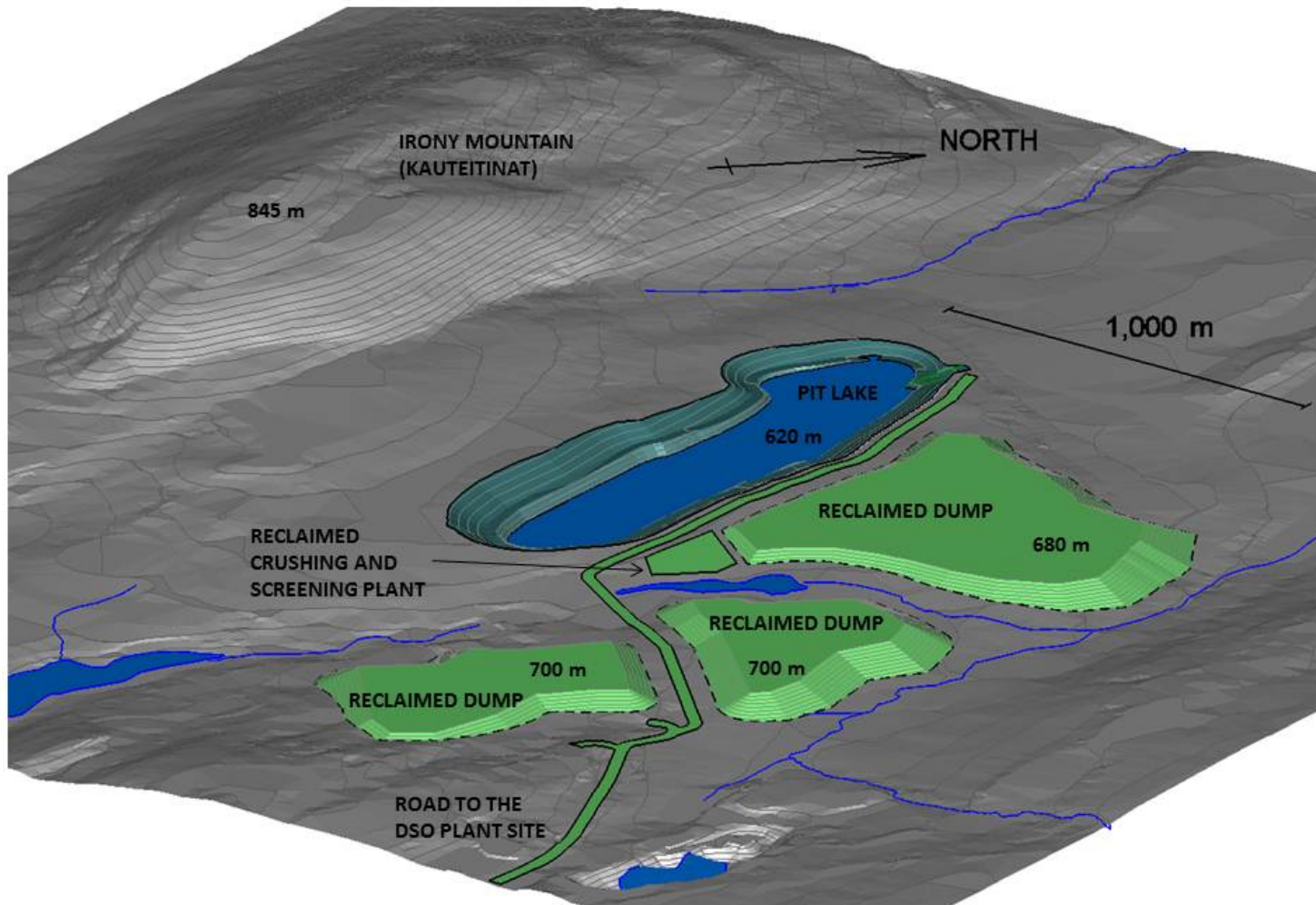
Howse Project

AFTER 14 YEARS



Howse Project

CLOSURE



Project Schedule



Phases	Expected dates
Beginning of the Environmental and Social Impact Assessment (ESIA)	June 2014
Consultation for the ESIA	September 2014
Submission of the ESIA to the federal and provincial environmental agencies	January - February 2015
Beginning of construction	June 2016
Operation	September 2016-2028
Site restoration, decommissioning and rehabilitation	Ongoing during the project – 2018-2033

Environmental and social Impact Assessment

Process to predict environmental effects of proposed initiatives before they are carried out:

- Potential adverse environmental effects;
- Measures to mitigate adverse environmental effects;
- Significant adverse environmental effects, after mitigation measures are implemented;
- Follow-up program to verify the accuracy of the environmental assessment and the effectiveness of the mitigation measures.



Environmental and social Impact Assessment

Environment



PROJECT



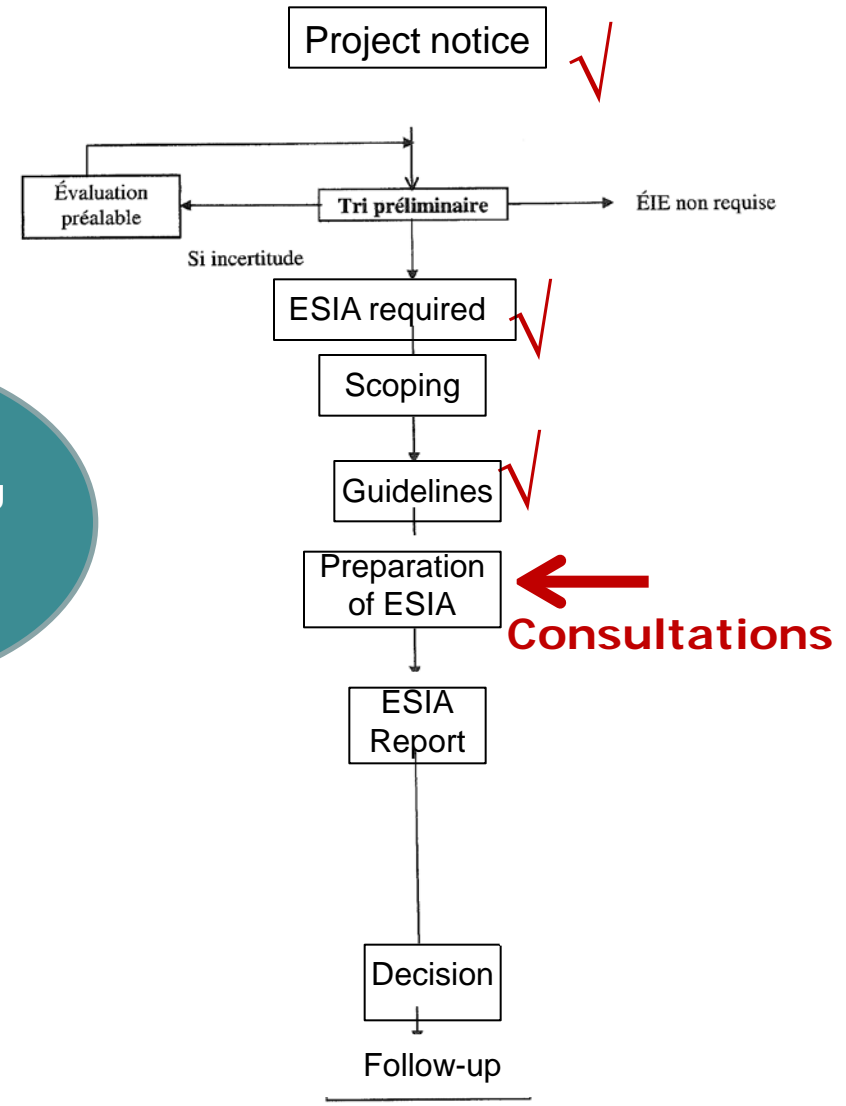
IMPACTS



MITIGATION



PROJECT
ACCEPTABILITY

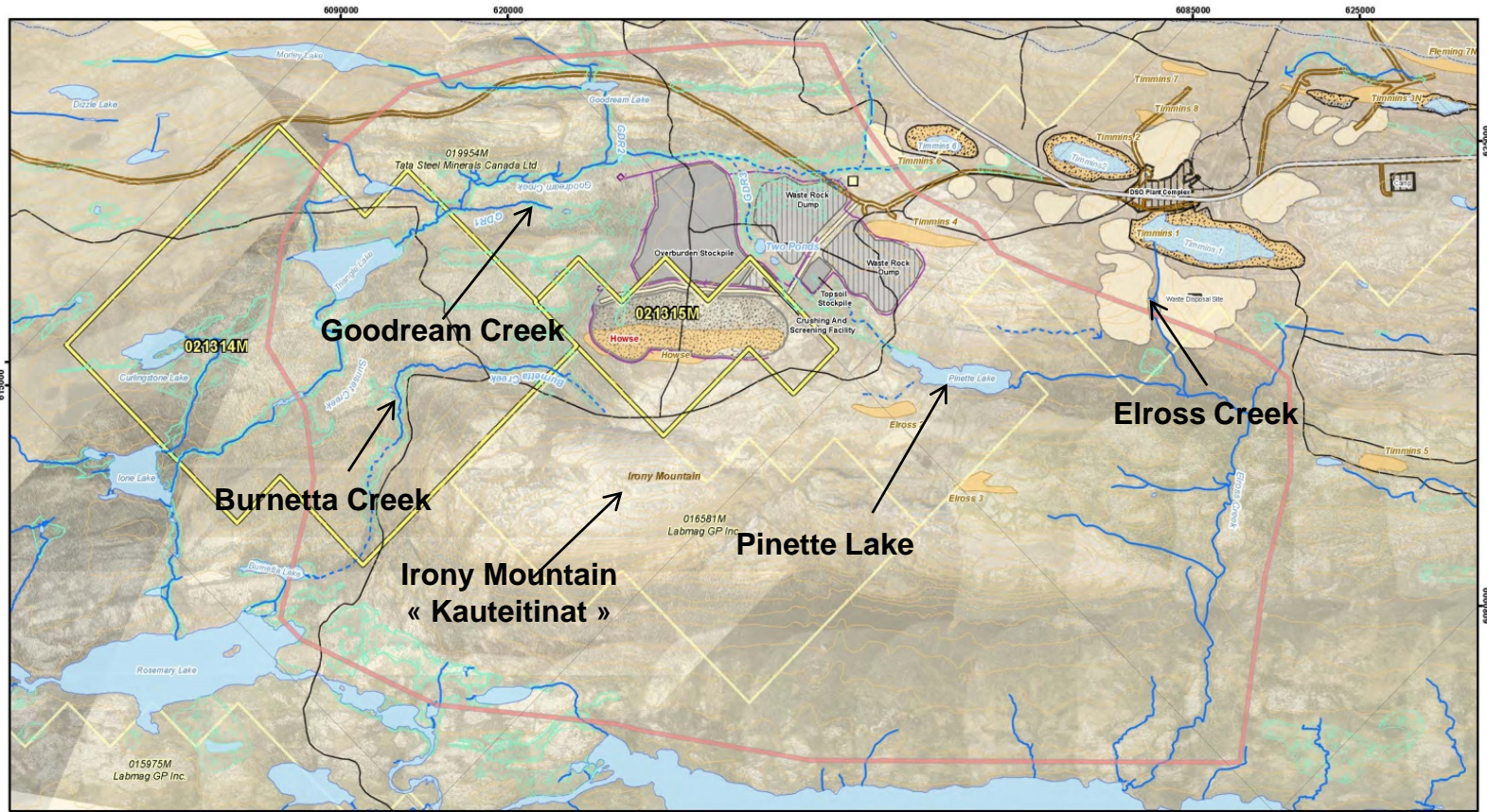


Potential Impacts

- Socio-economic effects
- Water quality and aquatic life
- Effects on fauna/flora and on harvests
- Air Quality
- Noise



Identified Sensitive Areas



LEGEND

Basemap

- Permanent Watercourse
- Intermittent Watercourse
- Storm Run-off
- Disappearing Stream
- Artesian Spring
- Waterbody
- Contour Line (15 m)
- Provincial Border
- Existing Road
- Main Access Road
- Wetland
- Local Study Area

Infrastructure And Mining Components

- Proposed Howse Pit
- Proposed Low Grade/Overburden Stockpile
- Proposed Crushing/Screening Facility
- Proposed Waste
- Rock Dump
- Mine Haul Road
- Sedimentation Pond
- Proposed Ditch
- Potential Road To DSO Area 4
- Proposed Railroad
- Timmins 4
- Sedimentation Pond-3
- DSO Howse - Claims
- Labrador Iron Mines Limited(49%)
- Howse Minerals Ltd.(51%)
- Other Claim

Elross Lake Area Iron Ore Mine (ELA/OM) Plant

- Infrastructure footprint
- Existing Dump
- Existing Pit
- Deposit

*Hydrogons are oriented along the direction of water flow

FILE VERSION DATE, AUTHOR
04/04/07 01_3093-12-13, E.D.

SCALE: 1:30,000

0 500 1 000 2 000
Meters

UTM 19N NAD 83

SOURCES

Map base
Government of Canada, NTDB, 1:50,000, 1979
Government of N.L. and government of Quebec,
Groupe Hemispheres, Hydrology and update, 2013


Infrastructure and Mining Components
New Millennium Capital Corp., Mining sites and roads
TATA Steel Minerals Canada Limited
NET-CHEM Howse
Deposit Design for General Layout, 2013

Claims

DSO Howse Property

Figure 2.1

Consultations

- 
- ⤿ We invite your comments on the potential environmental and socio-economic effects of the Project – will be integrated to the study.
 - ⤿ Discussion will focus on:
 - Potential impacts (negative and positive)
 - Mitigation / avoidance measures
 - Potential cumulative impacts
 - ⤿ A specific study focusing on issues related to land and resource-use and to aboriginal traditional knowledge is being prepared.



Questions?

Contact HML: coco.calderhead@tatasteelcanada.com

(514) 764-6716

Tshinashkumitinan
Thank you!