

APPENDIX F4
AMEC 2010 and 2014 Wetland Baseline Survey Report

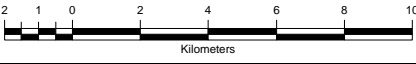

FIGURES

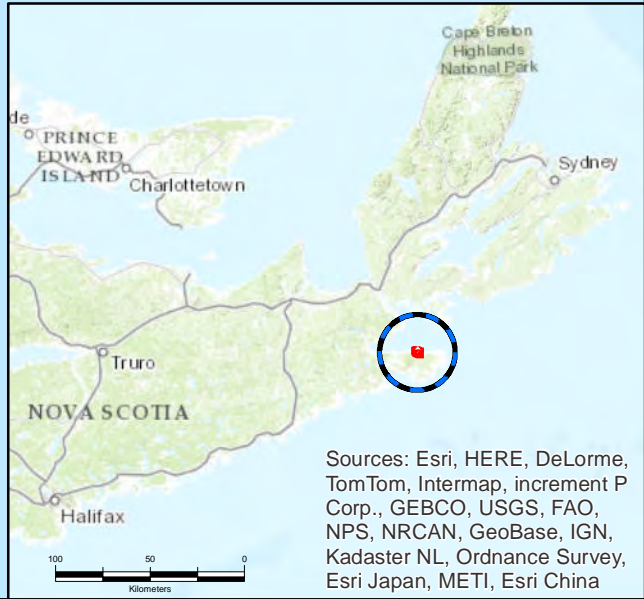
Black Point Quarry Project
Guysborough County, NS
SLR Project No.: 210.05913.00000

FIGURES

Path: P:\5300 PROJECTS\2014\TV144003 - Black Point Quarry EA Support\CAD\Wetland Field Report Figures\Figure 1 - Project Location.mxd User: derrick.schulz Date: 9/24/2014



| | |
|---------------------|---|
| TITLE: | Figure 1 Project Location |
| PROJECT: | 2010 / 2011 / 2014 WETLAND FIELD SURVEY DELINEATION AND FUNCTIONAL ASSESSMENT REPORT BLACK POINT QUARRY GUYSBOROUGH COUNTY |
| CLIENT: | Morien Resources Corp. (Morien) Metropolitan Place Suite 1480, 99 Wyse Road Dartmouth, Nova Scotia, Canada, B3A 4S5 |
| LOCATION: | Guysborough County Nova Scotia |
| DATE: | September 2014 |
| DATUM & PROJECTION: | NAD83 CSRS UTM Zone 20N |
| AMEC PROJECT NO: | TV144003 |
| LEGEND: | <ul style="list-style-type: none"> Site Boundary Roads River / Stream Waterbody |
| |  |
| | <p>AMEC Environment & Infrastructure A Division of AMEC Americas Ltd.</p> <p>50 Troop Avenue, Unit 300 Dartmouth, N.S., B3B 1Z1 (P) 902-468-2848 (F) 902-468-1314</p>  |

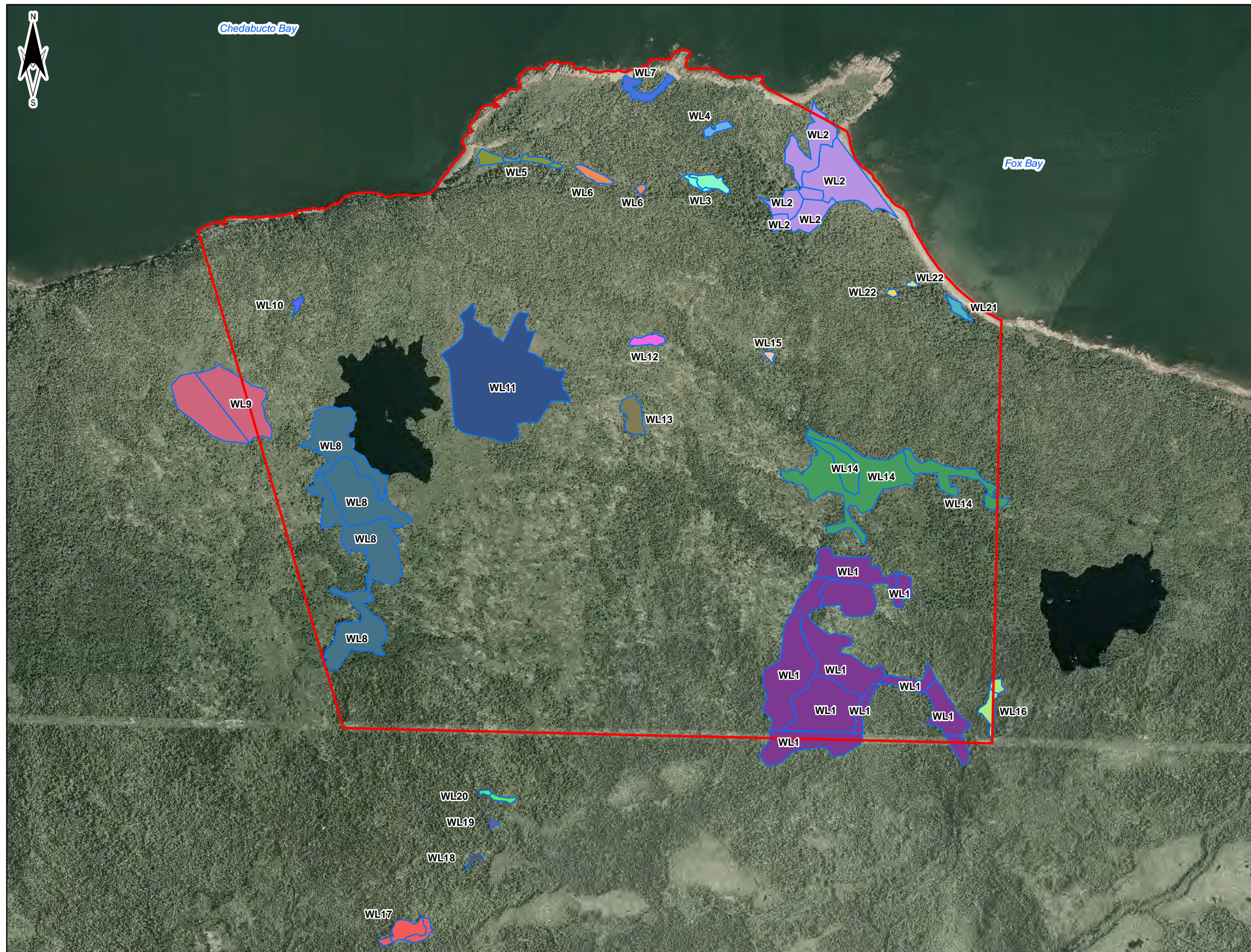


Sources: Esri, HERE, DeLorme, TomTom, Intermap, increment P Corp., GEBCO, USGS, FAO, NPS, NRCAN, GeoBase, IGN, Kadaster NL, Ordnance Survey, Esri Japan, METI, Esri China



Chedabucto Bay

Fox Bay



TITLE:

**Figure 2
Wetland Delineation Overview**

PROJECT: 2010 / 2011 / 2014 WETLAND
FIELD SURVEY DELINEATION
AND FUNCTIONAL ASSESSMENT
REPORT BLACK POINT QUARRY
GUYSBOROUGH COUNTY

CLIENT:
Morien Resources Corp. (Morien)
Metropolitan Place
Suite 1480, 99 Wyse Road
Dartmouth, Nova Scotia,
Canada, B3A 4S5

LOCATION:
**Guysborough County
Nova Scotia**

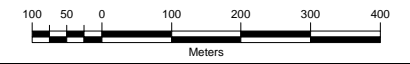
DATE: **September 2014**

DATUM & PROJECTION:
NAD83 CSRS UTM Zone 20N

AMEC PROJECT NO:
TV144003

LEGEND:

- Site Boundary
- Wetlands**
- WL1
- WL2
- WL3
- WL4
- WL5
- WL6
- WL7
- WL8
- WL9
- WL10
- WL11
- WL12
- WL13
- WL14
- WL15
- WL16
- WL17
- WL18
- WL19
- WL20
- WL21
- WL22



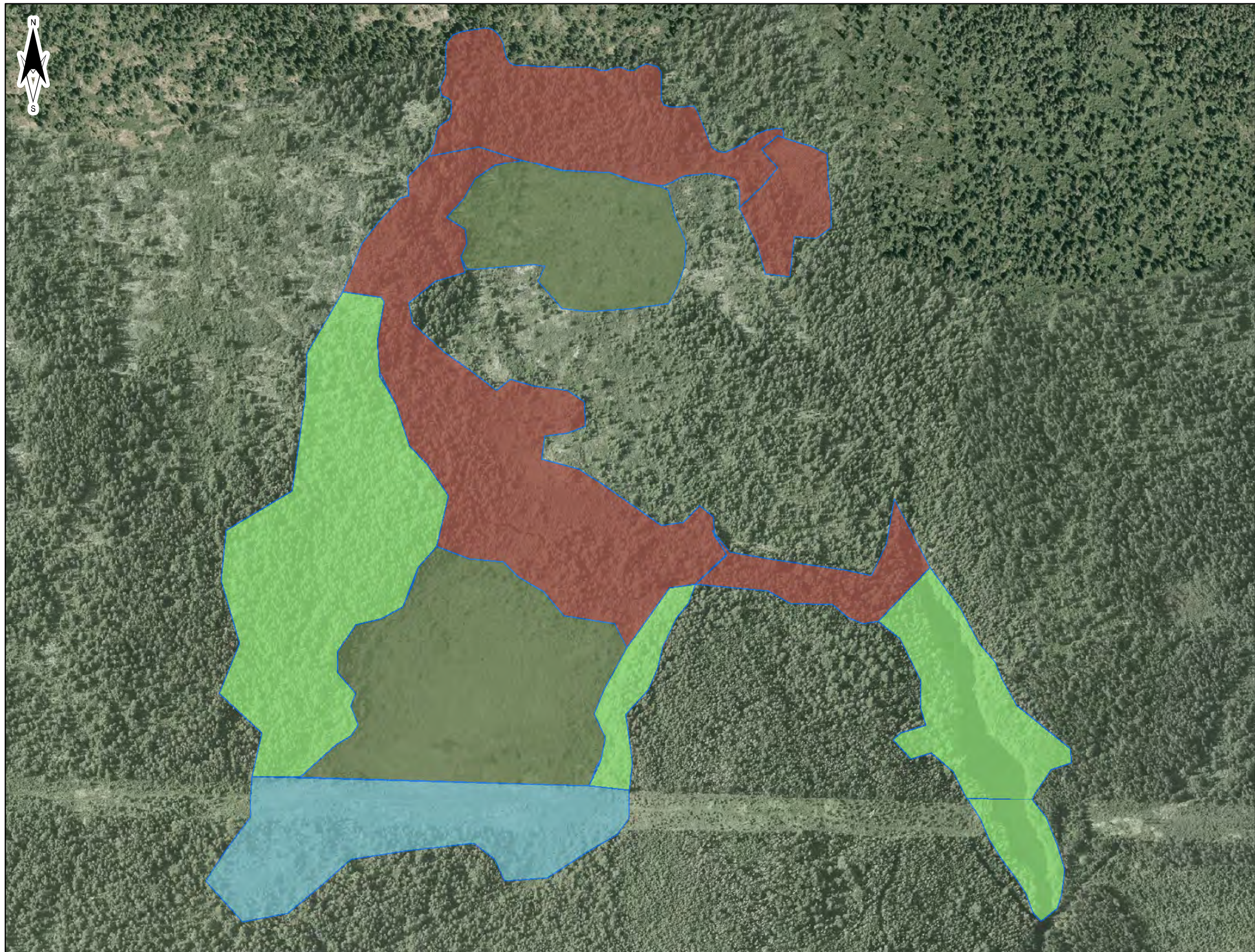
**AMEC Environment & Infrastructure
A Division of AMEC Americas Ltd.**

50 Troop Avenue, Unit 300
Dartmouth, N.S., B3B 1Z1
(P) 902-468-2848 (F) 902-468-1314



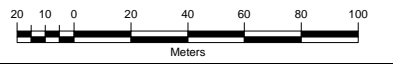
Path: P:\5300 PROJECTS\2014\TV144003 - Black Point Quarry EA Support\CAD\Wetland Field Report Figures\Figure 2 - Wetland Delineation Overview.mxd User: derrick.schulz Date: 9/24/2014

Base Image: Nova Scotia Geomatics Centre; Orthoimagery from GeoNOVA, Dated 2007



| | |
|---------------------|---|
| TITLE: | Figure 3 Wetland WL1 |
| PROJECT: | 2010 / 2011 / 2014 WETLAND FIELD SURVEY DELINEATION AND FUNCTIONAL ASSESSMENT REPORT BLACK POINT QUARRY GUYSBOROUGH COUNTY |
| CLIENT: | Morien Resources Corp. (Morien) Metropolitan Place Suite 1480, 99 Wyse Road Dartmouth, Nova Scotia, Canada, B3A 4S5 |
| LOCATION: | Guysborough County Nova Scotia |
| DATE: | September 2014 |
| DATUM & PROJECTION: | NAD83 CSRS UTM Zone 20N |
| AMEC PROJECT NO: | TV144003 |

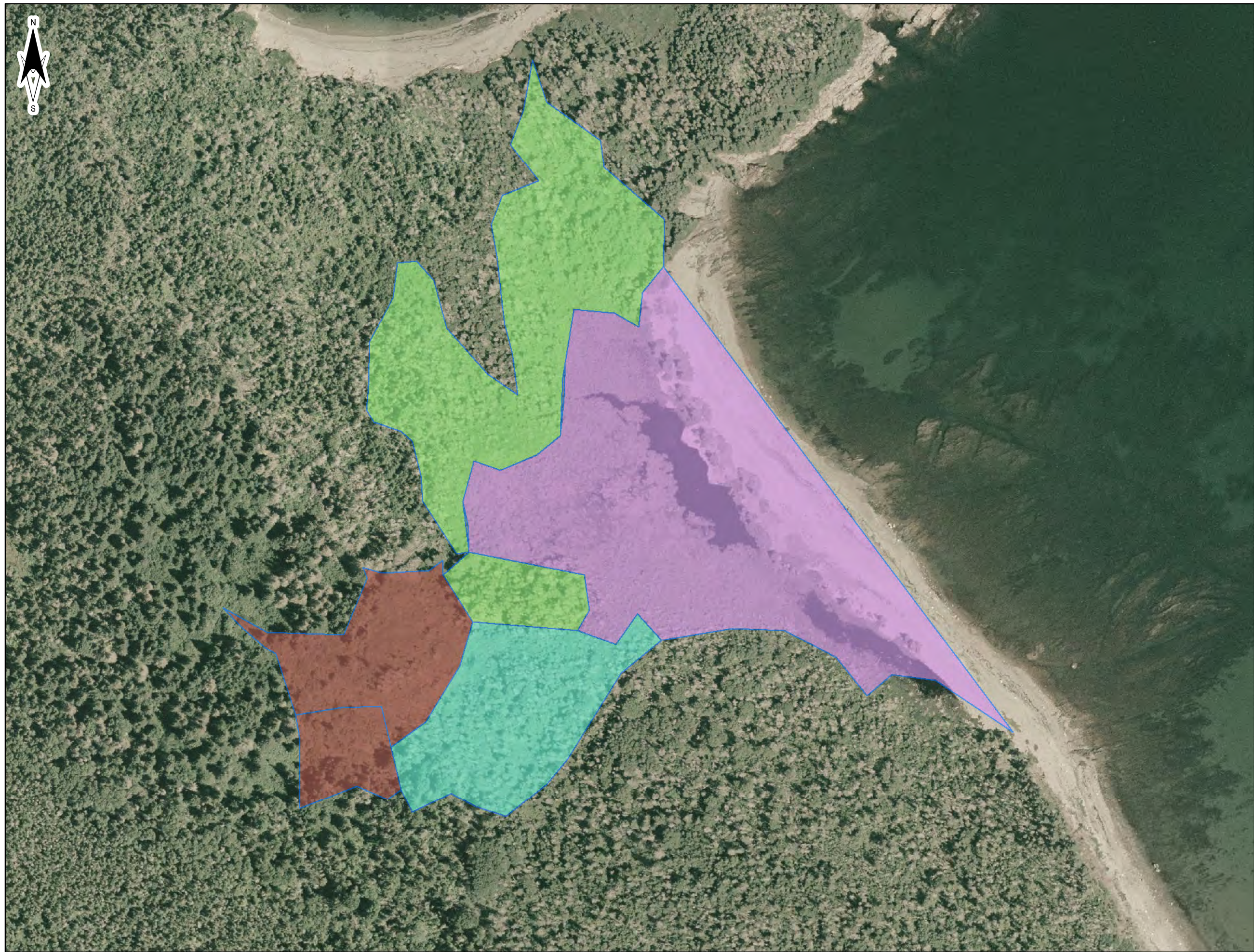
| |
|------------------|
| LEGEND: |
| Wetland 1 |
| Bog |
| Forested Swamp |
| Shrub Bog |
| Shrub Swamp |



AMEC Environment & Infrastructure
A Division of AMEC Americas Ltd.
50 Troop Avenue, Unit 300
Dartmouth, N.S., B3B 1Z1
(P) 902-468-2848 (F) 902-468-1314

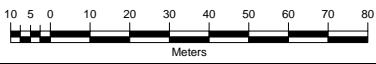
Path: P:\5300 PROJECTS\2014\TV144003 - Black Point Quarry EA Support\CAD\Wetland Field Report Figures\Figure 3 - Wetland WL1.mxd User: derrick.schulz Date: 9/24/2014

Base Image: Nova Scotia Geomatics Centre; Orthoimagery from GeoNOVA, Dated 2007



| | |
|---------------------|---|
| TITLE: | Figure 4 Wetland WL2 |
| PROJECT: | 2010 / 2011 / 2014 WETLAND FIELD SURVEY DELINEATION AND FUNCTIONAL ASSESSMENT REPORT BLACK POINT QUARRY GUYSBOROUGH COUNTY |
| CLIENT: | Morien Resources Corp. (Morien) Metropolitan Place Suite 1480, 99 Wyse Road Dartmouth, Nova Scotia, Canada, B3A 4S5 |
| LOCATION: | Guysborough County Nova Scotia |
| DATE: | September 2014 |
| DATUM & PROJECTION: | NAD83 CSRS UTM Zone 20N |
| AMEC PROJECT NO: | TV144003 |

| | |
|---------|---|
| LEGEND: | <p>Wetland 2</p> <ul style="list-style-type: none"> Fen Forested Swamp Fresh Marsh Shrub Swamp |
|---------|---|



**AMEC Environment & Infrastructure
A Division of AMEC Americas Ltd.**

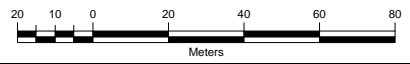
50 Troop Avenue, Unit 300
Dartmouth, N.S., B3B 1Z1
(P) 902-468-2848 (F) 902-468-1314





| | |
|---------------------|---|
| TITLE: | Figure 5 Wetland WL3 |
| PROJECT: | 2010 / 2011 / 2014 WETLAND FIELD SURVEY DELINEATION AND FUNCTIONAL ASSESSMENT REPORT BLACK POINT QUARRY GUYSBOROUGH COUNTY |
| CLIENT: | Morien Resources Corp. (Morien) Metropolitan Place Suite 1480, 99 Wyse Road Dartmouth, Nova Scotia, Canada, B3A 4S5 |
| LOCATION: | Guysborough County Nova Scotia |
| DATE: | September 2014 |
| DATUM & PROJECTION: | NAD83 CSRS UTM Zone 20N |
| AMEC PROJECT NO: | TV144003 |

| | |
|---------|---|
| LEGEND: | Wetland 3 |
| |  Fen |



AMEC Environment & Infrastructure
A Division of AMEC Americas Ltd.

50 Troop Avenue, Unit 300
Dartmouth, N.S., B3B 1Z1
(P) 902-468-2848 (F) 902-468-1314



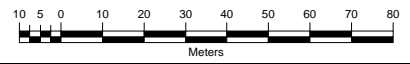
Path: P:\5300 PROJECTS\2014\TV144003 - Black Point Quarry EA Support\CAD\Wetland Field Report Figures\Figure 5 - Wetland WL3.mxd User: derrick.schulz Date: 9/24/2014

Base Image: Nova Scotia Geomatics Centre; Orthoimagery from GeoNOVA, Dated 2007



| | |
|---------------------|---|
| TITLE: | Figure 6 Wetland WL4 |
| PROJECT: | 2010 / 2011 / 2014 WETLAND FIELD SURVEY DELINEATION AND FUNCTIONAL ASSESSMENT REPORT BLACK POINT QUARRY GUYSBOROUGH COUNTY |
| CLIENT: | Morien Resources Corp. (Morien) Metropolitan Place Suite 1480, 99 Wyse Road Dartmouth, Nova Scotia, Canada, B3A 4S5 |
| LOCATION: | Guysborough County Nova Scotia |
| DATE: | September 2014 |
| DATUM & PROJECTION: | NAD83 CSRS UTM Zone 20N |
| AMEC PROJECT NO: | TV144003 |

| | |
|---------|-------------------------------|
| LEGEND: | Wetland 4 Treed Bog |
|---------|-------------------------------|



AMEC Environment & Infrastructure
A Division of AMEC Americas Ltd.

50 Troop Avenue, Unit 300
Dartmouth, N.S., B3B 1Z1
(P) 902-468-2848 (F) 902-468-1314

Path: P:\5300 PROJECTS\2014\TV144003 - Black Point Quarry EA Support\CAD\Wetland Field Report Figures\Figure 6 - Wetland WL4.mxd User: derrick.schulz Date: 9/24/2014

Base Image: Nova Scotia Geomatics Centre; Orthoimagery from GeoNOVA, Dated 2007



TITLE:

**Figure 7
Wetland WL5**

PROJECT: **2010 / 2011 / 2014 WETLAND
FIELD SURVEY DELINEATION
AND FUNCTIONAL ASSESSMENT
REPORT BLACK POINT QUARRY
GUYSBOROUGH COUNTY**

CLIENT:
**Morien Resources Corp. (Morien)
Metropolitan Place
Suite 1480, 99 Wyse Road
Dartmouth, Nova Scotia,
Canada, B3A 4S5**

LOCATION:
**Guysborough County
Nova Scotia**

DATE:
September 2014

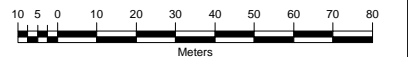
DATUM & PROJECTION:
NAD83 CSRS UTM Zone 20N

AMEC PROJECT NO:
TV144003

LEGEND:

Wetland 5

 Fen



**AMEC Environment & Infrastructure
A Division of AMEC Americas Ltd.**

50 Troop Avenue, Unit 300
Dartmouth, N.S., B3B 1Z1
(P) 902-468-2848 (F) 902-468-1314





TITLE:

**Figure 8
Wetland WL6**

PROJECT: **2010 / 2011 / 2014 WETLAND
FIELD SURVEY DELINEATION
AND FUNCTIONAL ASSESSMENT
REPORT BLACK POINT QUARRY
GUYSBOROUGH COUNTY**

CLIENT:
**Morien Resources Corp. (Morien)
Metropolitan Place
Suite 1480, 99 Wyse Road
Dartmouth, Nova Scotia,
Canada, B3A 4S5**

LOCATION:
**Guysborough County
Nova Scotia**



DATE:
September 2014

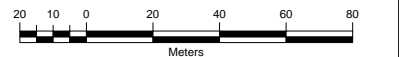
DATUM & PROJECTION:
NAD83 CSRS UTM Zone 20N

AMEC PROJECT NO:
TV144003

LEGEND:

Wetland 6

-  Bog
-  Treed Bog



**AMEC Environment & Infrastructure
A Division of AMEC Americas Ltd.**

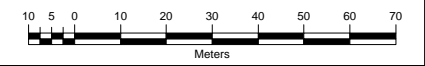
50 Troop Avenue, Unit 300
Dartmouth, N.S., B3B 1Z1
(P) 902-468-2848 (F) 902-468-1314





| | |
|---------------------|--|
| TITLE: | Figure 9 Wetland WL7 |
| PROJECT: | 2010 / 2011 / 2014 WETLAND FIELD SURVEY DELINEATION AND FUNCTIONAL ASSESSMENT REPORTBLACK POINT QUARRY GUYSBOROUGH COUNTY |
| CLIENT: | Morien Resources Corp. (Morien) Metropolitan Place Suite 1480, 99 Wyse Road Dartmouth, Nova Scotia, Canada, B3A 4S5 |
| LOCATION: | Guysborough County Nova Scotia |
| DATE: | September 2014 |
| DATUM & PROJECTION: | NAD83 CSRS UTM Zone 20N |
| AMEC PROJECT NO: | TV144003 |

| | |
|---------|--|
| LEGEND: | Wetland 7  Forested Swamp |
|---------|--|



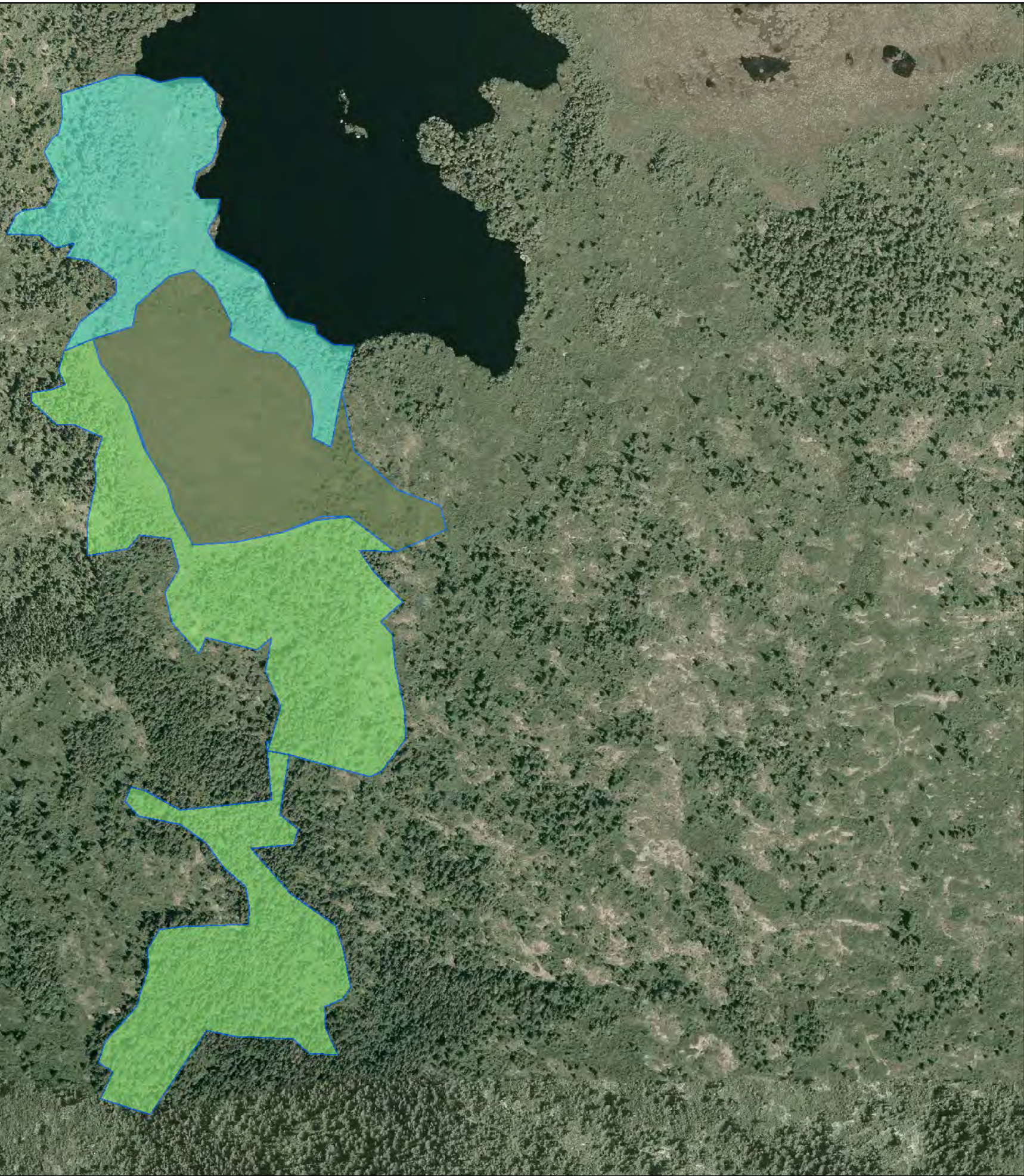
**AMEC Environment & Infrastructure
A Division of AMEC Americas Ltd.**

50 Troop Avenue, Unit 300
Dartmouth, N.S., B3B 1Z1
(P) 902-468-2848 (F) 902-468-1314



Path: P:\5300 PROJECTS\2014\TV144003 - Black Point Quarry EA Support\CAD\Wetland Field Report Figures\Figure 9 - Wetland WL7.mxd User: derrick.schuz Date: 9/24/2014

Base Image: Nova Scotia Geomatics Centre; Orthoimagery from GeoNOVA, Dated 2007



TITLE:

**Figure 10
Wetland WL8**

PROJECT: **2010 / 2011 / 2014 WETLAND
FIELD SURVEY DELINEATION
AND FUNCTIONAL ASSESSMENT
REPORT BLACK POINT QUARRY
GUYSBOROUGH COUNTY**

CLIENT:
**Morien Resources Corp. (Morien)
Metropolitan Place
Suite 1480, 99 Wyse Road
Dartmouth, Nova Scotia,
Canada, B3A 4S5**

LOCATION:
**Guysborough County
Nova Scotia**




DATE:
September 2014

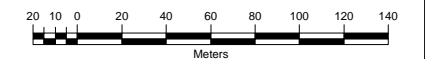
DATUM & PROJECTION:
NAD83 CSRS UTM Zone 20N

AMEC PROJECT NO:
TV144003

LEGEND:

Wetland 8

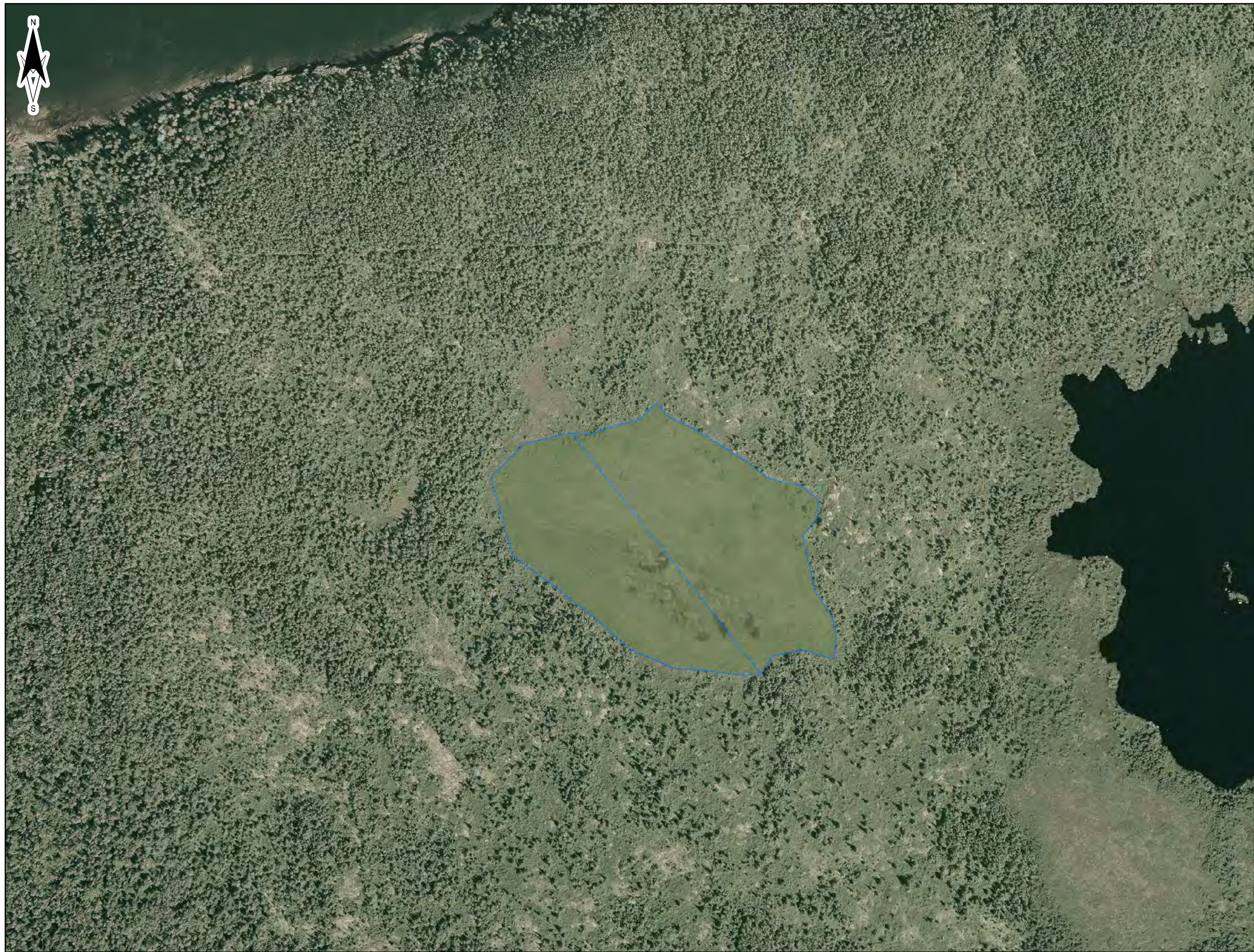
-  Bog
-  Fen
-  Forested Swamp



**AMEC Environment & Infrastructure
A Division of AMEC Americas Ltd.**

50 Troop Avenue, Unit 300
Dartmouth, N.S., B3B 1Z1
(P) 902-468-2848 (F) 902-468-1314





TITLE:

**Figure 11
Wetland WL9**

PROJECT: **2010 / 2011 / 2014 WETLAND
FIELD SURVEY DELINEATION
AND FUNCTIONAL ASSESSMENT
REPORT BLACK POINT QUARRY
GUYSBOROUGH COUNTY**

CLIENT:
**Morien Resources Corp. (Morien)
Metropolitan Place
Suite 1480, 99 Wyse Road
Dartmouth, Nova Scotia,
Canada, B3A 4S5**

LOCATION:
**Guysborough County
Nova Scotia**

DATE:
September 2014

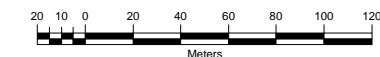
DATUM & PROJECTION:
NAD83 CSRS UTM Zone 20N

AMEC PROJECT NO:
TV144003

LEGEND:

Wetland 9

 Bog



**AMEC Environment & Infrastructure
A Division of AMEC Americas Ltd.**

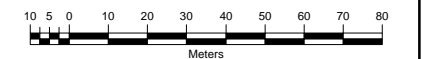
50 Troop Avenue, Unit 300
Dartmouth, N.S., B3B 1Z1
(P) 902-468-2848 (F) 902-468-1314





| | |
|---------------------|--|
| TITLE: | Figure 12 Wetland WL10 |
| PROJECT: | 2010 / 2011 / 2014 WETLAND FIELD SURVEY DELINEATION AND FUNCTIONAL ASSESSMENT REPORTBLACK POINT QUARRY GUYSBOROUGH COUNTY |
| CLIENT: | Morien Resources Corp. (Morien) Metropolitan Place Suite 1480, 99 Wyse Road Dartmouth, Nova Scotia, Canada, B3A 4S5 |
| LOCATION: | Guysborough County Nova Scotia |
| DATE: | September 2014 |
| DATUM & PROJECTION: | NAD83 CSRS UTM Zone 20N |
| AMEC PROJECT NO: | TV144003 |

| | |
|---------|---|
| LEGEND: | Wetland 10  Forested Swamp |
|---------|---|



**AMEC Environment & Infrastructure
A Division of AMEC Americas Ltd.**

50 Troop Avenue, Unit 300
Dartmouth, N.S., B3B 1Z1
(P) 902-468-2848 (F) 902-468-1314





| | |
|---------------------|---|
| TITLE: | Figure 13 Wetland WL11 |
| PROJECT: | 2010 / 2011 / 2014 WETLAND FIELD SURVEY DELINEATION AND FUNCTIONAL ASSESSMENT REPORT BLACK POINT QUARRY GUYSBOROUGH COUNTY |
| CLIENT: | Morien Resources Corp. (Morien) Metropolitan Place Suite 1480, 99 Wyse Road Dartmouth, Nova Scotia, Canada, B3A 4S5 |
| LOCATION: | Guysborough County Nova Scotia |
| DATE: | September 2014 |
| DATUM & PROJECTION: | NAD83 CSRS UTM Zone 20N |
| AMEC PROJECT NO: | TV144003 |

| | |
|---------|--------------------------|
| LEGEND: | Wetland 11 Bog |
| | |

AMEC Environment & Infrastructure
A Division of AMEC Americas Ltd.
50 Troop Avenue, Unit 300
Dartmouth, N.S., B3B 1Z1
(P) 902-468-2848 (F) 902-468-1314



TITLE:

**Figure 14
Wetland WL12**

PROJECT: **2010 / 2011 / 2014 WETLAND
FIELD SURVEY DELINEATION
AND FUNCTIONAL ASSESSMENT
REPORT BLACK POINT QUARRY
GUYSBOROUGH COUNTY**

CLIENT:
**Morien Resources Corp. (Morien)
Metropolitan Place
Suite 1480, 99 Wyse Road
Dartmouth, Nova Scotia,
Canada, B3A 4S5**

LOCATION:
**Guysborough County
Nova Scotia**

DATE:
September 2014

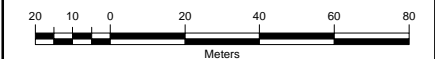
DATUM & PROJECTION:
NAD83 CSRS UTM Zone 20N

AMEC PROJECT NO:
TV144003

LEGEND:

Wetland 12

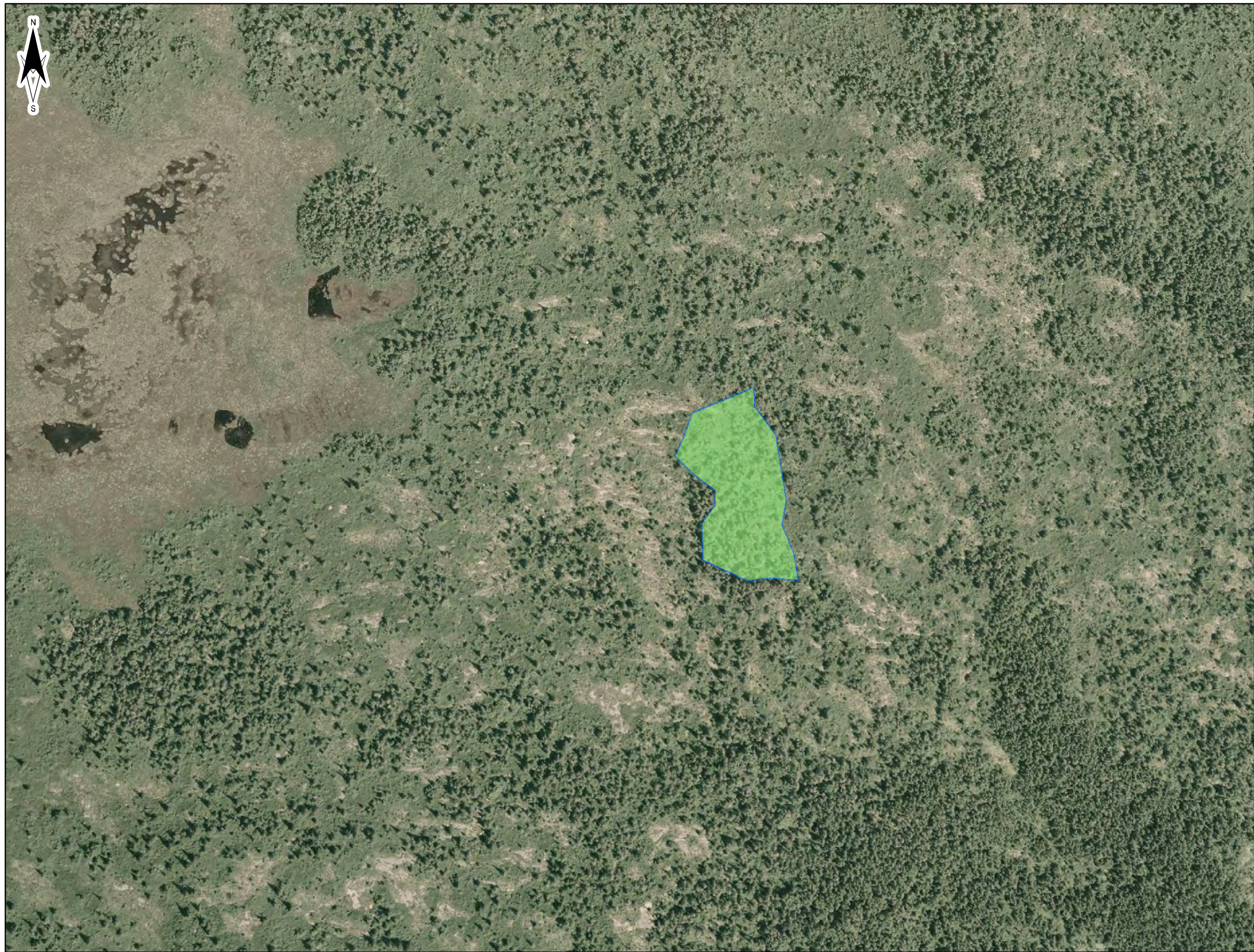
 Fen



**AMEC Environment & Infrastructure
A Division of AMEC Americas Ltd.**

50 Troop Avenue, Unit 300
Dartmouth, N.S., B3B 1Z1
(P) 902-468-2848 (F) 902-468-1314





TITLE:

**Figure 15
Wetland WL13**

PROJECT: **2010 / 2011 / 2014 WETLAND
FIELD SURVEY DELINEATION
AND FUNCTIONAL ASSESSMENT
REPORT BLACK POINT QUARRY
GUYSBOROUGH COUNTY**

CLIENT:
**Morien Resources Corp. (Morien)
Metropolitan Place
Suite 1480, 99 Wyse Road
Dartmouth, Nova Scotia,
Canada, B3A 4S5**


LOCATION:
**Guysborough County
Nova Scotia**

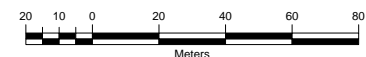
DATE: **September 2014**

DATUM & PROJECTION:
NAD83 CSRS UTM Zone 20N

AMEC PROJECT NO: **TV144003**

LEGEND:

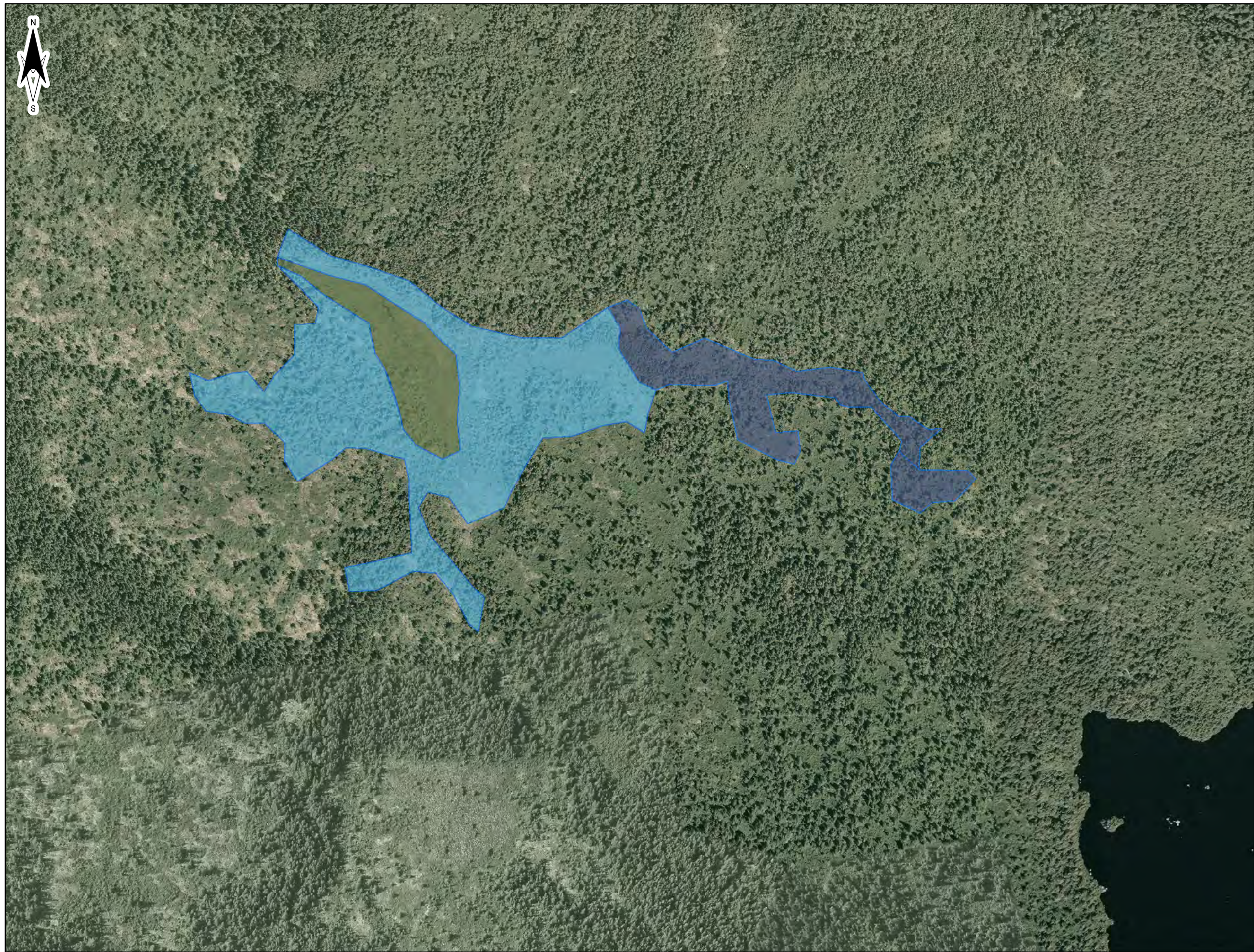
Wetland 13
 **Forested Swamp**






**AMEC Environment & Infrastructure
A Division of AMEC Americas Ltd.**

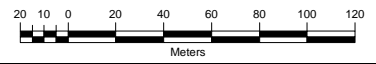
50 Troop Avenue, Unit 300
Dartmouth, N.S., B3B 1Z1
(P) 902-468-2848 (F) 902-468-1314





| | |
|---------------------|---|
| TITLE: | Figure 16 Wetland WL14 |
| PROJECT: | 2010 / 2011 / 2014 WETLAND FIELD SURVEY DELINEATION AND FUNCTIONAL ASSESSMENT REPORT BLACK POINT QUARRY GUYSBOROUGH COUNTY |
| CLIENT: | Morien Resources Corp. (Morien) Metropolitan Place Suite 1480, 99 Wyse Road Dartmouth, Nova Scotia, Canada, B3A 4S5 |
| LOCATION: | Guysborough County Nova Scotia |
| DATE: | September 2014 |
| DATUM & PROJECTION: | NAD83 CSRS UTM Zone 20N |
| AMEC PROJECT NO: | TV144003 |

- LEGEND:
- Wetland 14**
-  Bog
 -  Shrub Fen
 -  Treed Bog



AMEC Environment & Infrastructure
A Division of AMEC Americas Ltd.

50 Troop Avenue, Unit 300
Dartmouth, N.S., B3B 1Z1
(P) 902-468-2848 (F) 902-468-1314





TITLE:

**Figure 17
Wetland WL15**

PROJECT: **2010 / 2011 / 2014 WETLAND
FIELD SURVEY DELINEATION
AND FUNCTIONAL ASSESSMENT
REPORT BLACK POINT QUARRY
GUYSBOROUGH COUNTY**

CLIENT:
**Morien Resources Corp. (Morien)
Metropolitan Place
Suite 1480, 99 Wyse Road
Dartmouth, Nova Scotia,
Canada, B3A 4S5**

LOCATION:
**Guysborough County
Nova Scotia**

DATE: **September 2014**

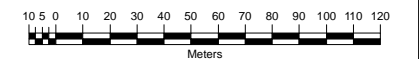
DATUM & PROJECTION:
NAD83 CSRS UTM Zone 20N

AMEC PROJECT NO: **TV144003**

LEGEND:

Wetland 15

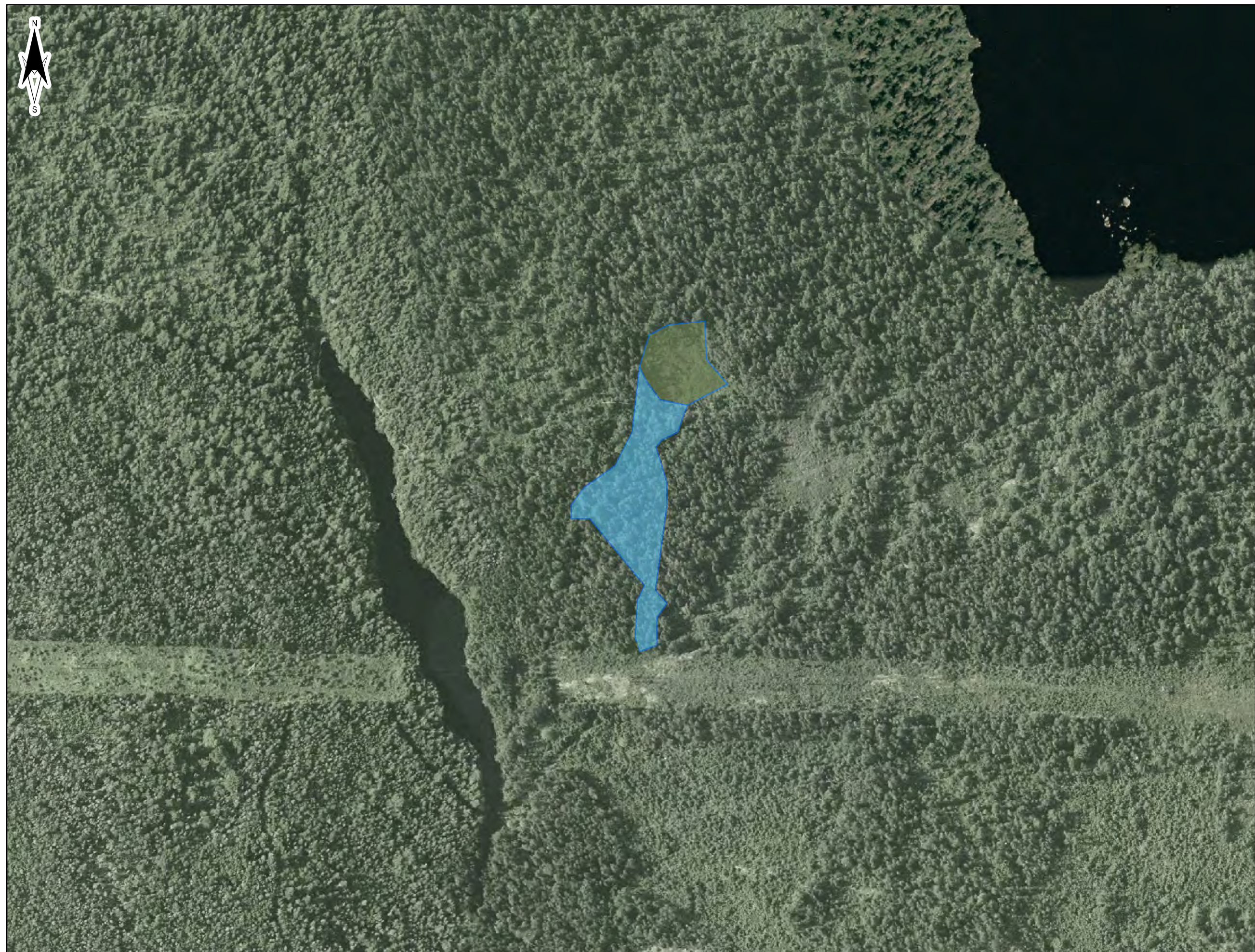
 Fen



**AMEC Environment & Infrastructure
A Division of AMEC Americas Ltd.**

50 Troop Avenue, Unit 300
Dartmouth, N.S., B3B 1Z1
(P) 902-468-2848 (F) 902-468-1314





TITLE:

**Figure 18
Wetland WL16**

PROJECT: 2010 / 2011 / 2014 WETLAND
FIELD SURVEY DELINEATION
AND FUNCTIONAL ASSESSMENT
REPORT BLACK POINT QUARRY
GUYSBOROUGH COUNTY

CLIENT:
Morien Resources Corp. (Morien)
Metropolitan Place
Suite 1480, 99 Wyse Road
Dartmouth, Nova Scotia,
Canada, B3A 4S5

LOCATION:
**Guysborough County
Nova Scotia**



DATE:
September 2014

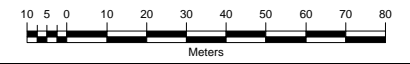
DATUM & PROJECTION:
NAD83 CSRS UTM Zone 20N

AMEC PROJECT NO:
TV144003

LEGEND:

Wetland 16

-  Bog
-  Treed Bog



**AMEC Environment & Infrastructure
A Division of AMEC Americas Ltd.**

50 Troop Avenue, Unit 300
Dartmouth, N.S., B3B 1Z1
(P) 902-468-2848 (F) 902-468-1314





TITLE:

**Figure 19
Wetland WL17**

PROJECT: **2010 / 2011 / 2014 WETLAND
FIELD SURVEY DELINEATION
AND FUNCTIONAL ASSESSMENT
REPORTBLACK POINT QUARRY
GUYSBOROUGH COUNTY**

CLIENT:
**Morien Resources Corp. (Morien)
Metropolitan Place
Suite 1480, 99 Wyse Road
Dartmouth, Nova Scotia,
Canada, B3A 4S5**

LOCATION:
**Guysborough County
Nova Scotia**



DATE:
September 2014

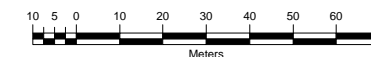
DATUM & PROJECTION:
NAD83 CSRS UTM Zone 20N

AMEC PROJECT NO:
TV144003

LEGEND:

Wetland 17

-  Bog
-  Forested Swamp



**AMEC Environment & Infrastructure
A Division of AMEC Americas Ltd.**

50 Troop Avenue, Unit 300
Dartmouth, N.S., B3B 1Z1
(P) 902-468-2848 (F) 902-468-1314





TITLE:

**Figure 20
Wetland WL18**

PROJECT: **2010 / 2011 / 2014 WETLAND
FIELD SURVEY DELINEATION
AND FUNCTIONAL ASSESSMENT
REPORT BLACK POINT QUARRY
GUYSBOROUGH COUNTY**

CLIENT:
**Morien Resources Corp. (Morien)
Metropolitan Place
Suite 1480, 99 Wyse Road
Dartmouth, Nova Scotia,
Canada, B3A 4S5**

LOCATION:
**Guysborough County
Nova Scotia**

DATE:
September 2014

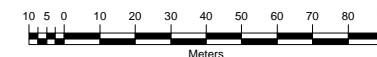
DATUM & PROJECTION:
NAD83 CSRS UTM Zone 20N

AMEC PROJECT NO:
TV144003

LEGEND:

Wetland 18

 **Bog**



**AMEC Environment & Infrastructure
A Division of AMEC Americas Ltd.**

50 Troop Avenue, Unit 300
Dartmouth, N.S., B3B 1Z1
(P) 902-468-2848 (F) 902-468-1314





TITLE:

**Figure 21
Wetland WL19**

PROJECT: **2010 / 2011 / 2014 WETLAND
FIELD SURVEY DELINEATION
AND FUNCTIONAL ASSESSMENT
REPORT BLACK POINT QUARRY
GUYSBOROUGH COUNTY**

CLIENT:
**Morien Resources Corp. (Morien)
Metropolitan Place
Suite 1480, 99 Wyse Road
Dartmouth, Nova Scotia,
Canada, B3A 4S5**

LOCATION:
**Guysborough County
Nova Scotia**

DATE: **September 2014**

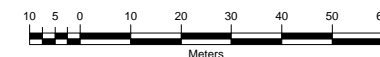
DATUM & PROJECTION:
NAD83 CSRS UTM Zone 20N

AMEC PROJECT NO: **TV144003**

LEGEND:

Wetland 19

 **Bog**



**AMEC Environment & Infrastructure
A Division of AMEC Americas Ltd.**

50 Troop Avenue, Unit 300
Dartmouth, N.S., B3B 1Z1
(P) 902-468-2848 (F) 902-468-1314





TITLE:

**Figure 22
Wetland WL20**

PROJECT: **2010 / 2011 / 2014 WETLAND
FIELD SURVEY DELINEATION
AND FUNCTIONAL ASSESSMENT
REPORT BLACK POINT QUARRY
GUYSBOROUGH COUNTY**

CLIENT:
**Morien Resources Corp. (Morien)
Metropolitan Place
Suite 1480, 99 Wyse Road
Dartmouth, Nova Scotia,
Canada, B3A 4S5**

LOCATION:
**Guysborough County
Nova Scotia**

DATE:
September 2014

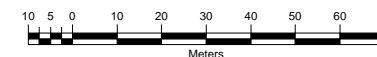
DATUM & PROJECTION:
NAD83 CSRS UTM Zone 20N

AMEC PROJECT NO:
TV144003

LEGEND:

Wetland 20

 Bog



**AMEC Environment & Infrastructure
A Division of AMEC Americas Ltd.**

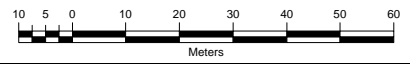
50 Troop Avenue, Unit 300
Dartmouth, N.S., B3B 1Z1
(P) 902-468-2848 (F) 902-468-1314





| | |
|---------------------|---|
| TITLE: | Figure 23 Wetland WL21 |
| PROJECT: | 2010 / 2011 / 2014 WETLAND FIELD SURVEY DELINEATION AND FUNCTIONAL ASSESSMENT REPORT BLACK POINT QUARRY GUYSBOROUGH COUNTY |
| CLIENT: | Morien Resources Corp. (Morien) Metropolitan Place Suite 1480, 99 Wyse Road Dartmouth, Nova Scotia, Canada, B3A 4S5 |
| LOCATION: | Guysborough County Nova Scotia |
| DATE: | September 2014 |
| DATUM & PROJECTION: | NAD83 CSRS UTM Zone 20N |
| AMEC PROJECT NO: | TV144003 |

LEGEND:
 Fen



**AMEC Environment & Infrastructure
A Division of AMEC Americas Ltd.**
50 Troop Avenue, Unit 300
Dartmouth, N.S., B3B 1Z1
(P) 902-468-2848 (F) 902-468-1314




TITLE:

**Figure 24
Wetland WL22**

PROJECT: **2010 / 2011 / 2014 WETLAND
FIELD SURVEY DELINEATION
AND FUNCTIONAL ASSESSMENT
REPORT BLACK POINT QUARRY
GUYSBOROUGH COUNTY**

CLIENT:
**Morien Resources Corp. (Morien)
Metropolitan Place
Suite 1480, 99 Wyse Road
Dartmouth, Nova Scotia,
Canada, B3A 4S5**

LOCATION:
**Guysborough County
Nova Scotia**

DATE:
September 2014

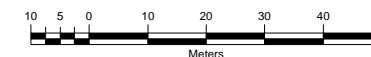
DATUM & PROJECTION:
NAD83 CSRS UTM Zone 20N

AMEC PROJECT NO:
TV144003

LEGEND:

Wetland 22

 Fen



**AMEC Environment & Infrastructure
A Division of AMEC Americas Ltd.**

50 Troop Avenue, Unit 300
Dartmouth, N.S., B3B 1Z1
(P) 902-468-2848 (F) 902-468-1314

