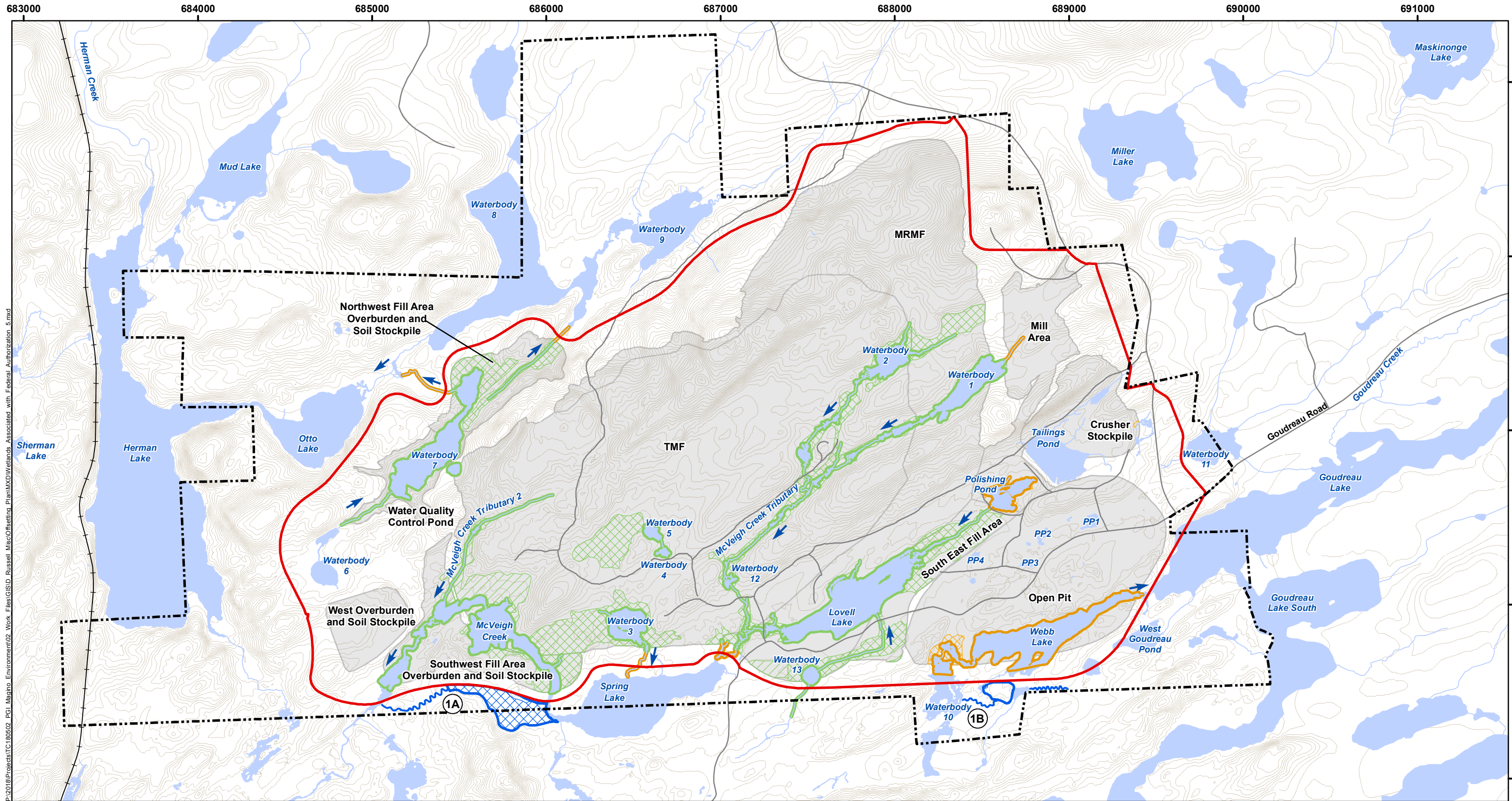


ANNEX 1: Third Round of Information Requirements for the Magino Gold Project Environmental Impact Statement (IR-3) - Clarifications

IR -3 Number (e.g. FFH(3)-01)	Prodigy ID #	IR -2 Reference # (if applicable)	Project Effects Link to CEAA 2012	Reference to EIS guidelines	Reference to EIS (including appendices)	Context and Rationale	Specific Question/ Proposed Follow-up Measure
IR Number: EA(3)-01a	ID: CEAA-FD86	IR-2 Reference #: EA(2)-01A	Project Effects Link to CEAA 2012: 5(2) Linked to Regulatory Permits/Authorizations (specify which legislation)	Reference to EIS guidelines: Part 1, Section 3.3.1.	Reference to EIS: Chapter 15, Section 15.1.6; Response to IR-1 Appendix 8.	Context and Rationale: <p>In order to complete its analysis of any effects due to changes to the environment, other than those referred to in section 5 (1)(a) and (b) of <i>CEAA 2012</i>, the Agency requires further information on the extent of wetlands that would be lost or altered due to the Project.</p> <p>Specifically, the proponent should provide the area of wetlands that would be lost or altered due to project components for which a federal authorization (in other words, a <i>Fisheries Act</i> Authorization or Schedule 2 amendment pursuant to the <i>Metal and Diamond Mining Effluent Regulations</i> under the <i>Fisheries Act</i>) would be required.</p>	Specific Clarification Request: Response B: The figure provided does not show the project components associated with federal authorizations, nor does it make clear what wetlands will be affected by the project's construction. For the effects analysis, Prodigy's assumption has been that all wetlands within the project study area were going to be lost. However, in order to understand the effects under 5(2) of CEAA 2012, it is important to understand where wetlands would be lost or altered due to federal authorizations. What the Agency is looking for is for areas of wetlands lost or altered due to the loss of waterbodies that would require a schedule 2 amendment of a Fisheries Act authorization, or any other federal decision (if there are any required for the construction of diversion channels, for example). The map should reflect where those areas are being lost or altered (perhaps a color differentiation would be appropriate), rather than what we have now, which just shows all of the wetlands and the outline of all of the project components (the processing plant, for example, does not require the federal exercise of power in order to be built – other than a decision under CEAA 2012). The Agency would like to see reflected the extent of losses or alteration on the map.
Response B The requested figure is provided as Figure 1. This figure shows those wetlands associated with waterbodies which would require Federal authorization under an amendment to Schedule 2 of the Metal and Diamond Mining Effluent Regulations or a <i>Fisheries Act</i> Authorization, with the wetlands colour-coded to reflect the authorization which would apply to the associated waterbodies. Further, those wetlands which will be affected by the construction of associated diversion channels are also identified.							

ANNEX 1: Third Round of Information Requirements for the Magino Gold Project Environmental Impact Statement (IR-3) - Clarifications

IR -3 Number (e.g. FFH(3)-01)	Prodigy ID #	IR -2 Reference # (if applicable)	Project Effects Link to CEAA 2012	Reference to EIS guidelines	Reference to EIS (including appendices)	Context and Rationale	Specific Question/ Proposed Follow-up Measure
IR Number: CE(3)-07	ID: CEAA-96	IR-2 Reference #: CE(2)-07	Project Effects Link to CEAA 2012: 5(1)(a)(iii) Migratory Birds	Reference to EIS guidelines: Part 2, Section 6.1.7	Reference to EIS: Chapter 7 -7.4.5, 7.4.7; Appendix E; TSD 17	Context and Rationale: Changes in the environment due to new mine facilities and transportation corridors will cause potential effects for migratory bird communities related to habitat loss, increased disturbance (noise, light, dust), and increased edge effects. The proponent has presented the total breeding bird occurrences by watershed only (Appendix E) as well as what species at risk were found during surveys (TSD 17). However, the presentation of breeding bird survey results should provide estimates of the total number of birds that will be affected by the project and by any cumulative effects, including due to the adjacent forestry management area.	Specific Clarification Request: Response A: Thank you for providing the number of migratory bird species (including species at risk) that would be affected by the Project. Please provide the estimated total number of breeding pairs of migratory bird species within the local and regional study areas. The purpose of the IR was to get an understanding of what the change in abundance would be. In order to do this, the Agency would need a baseline estimate to compare to the estimate of the displaced calculation of the % of breeding migratory birds within the LSA and RSA that would be impacted by the Project.
<p>Response A:</p> <p>Estimates of the total number of individuals (breeding males) of each migratory bird species, including species at risk, that are expected to be present in the Local Study Area (LSA) and the Regional Study Area (RSA) are provided in the attached Tables 1 and 2. Data were calculated from bird survey point count data assuming that all birds (breeding males) that were located within a 100 m radius of the point count station were detected and enumerated without duplication. Bird point count surveys were organized by watershed, but for the purpose of this exercise, a weighted average of all point count data was calculated for each ecosite type, yielding an average density (males / ha) for each species for each ecosite type. Density values were then applied to ecosite distributions (measured in hectares) that were determined for the LSA and RSA, to estimate the total number of breeding pairs for all species that are expected to be present in the LSA and RSA. For those ecosite types where bird point count data were not available, areas of these ecosite types were assigned to the most similar ecosite type for which point count data were available.</p> <p>Table 3 provides estimates of the percentages of breeding birds that are expected to be displaced within the LSA and RSA, as a result of Project development, at its maximum extent.</p>							



P:\2018\Projects\TC180502_P01_Magino_Environment\02_Work_Files\GIS\ID_Russell_Misc\Offsetting_Plan\MXD\Wetlands_Associated_with_Federal_Authorization_5.mxd

LEGEND

- Property Boundary
- Proposed Extent of Mine Development Area
- Schedule 2 Listing
- Section 35 Authorization
- Mine Infrastructure
- Waterbody
- Watercourse
- Contours (2.5 m interval)
- Railway
- Road
- Habitat Offsetting Options
- 1A: McVeigh Creek Diversion Channel between Spring Lake and McVeigh Creek Downstream of the TMF
- 1B: Diversion Channel from Waterbody 10 to Goudreau Lake
- Realignment - Organic Wetland
- Wetlands Lost or Altered Arising from Federal Decisions**
- Organic Wetlands
- Schedule 2
- Section 35
- Mineral Wetlands
- Schedule 2

NOTES:
 - Project outline boundary, property boundary, site footprints and contours provided by Minnow.

Datum: NAD83
 Projection: UTM Zone 16N



MAGINO GOLD PROJECT

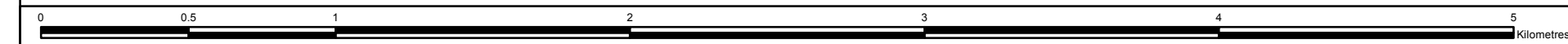
Waterbodies, Streams and Wetlands Associated with Federal Authorizations

PROJECT N°: TC180502

FIGURE: 1

SCALE: 1:21,000

DATE: August 2018



ANNEX 1: Third Round of Information Requirements for the Magino Gold Project Environmental Impact Statement (IR-3) - Clarifications

Table 1: Numbers of Breeding Pairs Expected to be Present in Local Study Area

Habitat Type		Upland Forest					Mineral Wetlands	Peat Wetlands					Disturbed	Open Water		Total
Ecosite Type		B049	B055	B065	B070	B119	B134	B128	B136	B138	B144	B147	Disturbed	LA	OW	
Aerial Extent (ha)		360	1316	225	595	10	48	250	69	35	51	91	170	411	25	3655
Species																
Common Loon	<i>Gavia immer</i>	0.0	86.0	0.0	0.0	0.0	0.0	11.4	0.0	0.0	8.1	0.0	6.0	56.1	0.0	167.5
Canada Goose	<i>Branta canadensis</i>	0.0	343.9	0.0	0.0	0.0	0.0	0.0	0.0	0.0	0.0	0.0	3.0	0.0	0.0	346.9
American Black Duck	<i>Anas rubripes</i>	0.0	21.5	0.0	0.0	0.0	0.0	0.0	0.0	0.0	0.0	115.6	0.0	0.0	0.0	137.1
Mallard	<i>Anas platyrhynchos</i>	0.0	10.7	0.0	0.0	0.0	0.0	11.4	0.0	0.0	0.0	0.0	0.0	0.0	0.0	22.1
Common Goldeneye	<i>Bucephala clangula</i>	0.0	0.0	0.0	0.0	0.0	0.0	0.0	0.0	0.0	0.0	28.9	0.0	0.0	0.0	28.9
Bald Eagle	<i>Haliaeetus leucocephalus</i>	0.0	0.0	0.0	0.0	0.0	0.0	0.0	0.0	0.0	0.0	0.0	3.0	0.0	0.0	3.0
Ruffed Grouse	<i>Bonasa umbellus</i>	0.0	86.0	0.0	0.0	0.0	0.0	0.0	0.0	0.0	0.0	0.0	12.0	0.0	0.0	98.0
Sandhill Crane	<i>Grus canadensis</i>	0.0	53.7	0.0	0.0	0.0	0.0	0.0	0.0	0.0	0.0	0.0	0.0	0.0	0.0	53.7
Killdeer	<i>Charadrius vociferus</i>	114.6	10.7	0.0	0.0	0.0	0.0	0.0	0.0	0.0	0.0	0.0	0.0	0.0	0.0	125.4
Wilson's Snipe	<i>Gallinago delicata</i>	0.0	10.7	143.3	15.8	0.0	0.0	22.8	0.0	0.0	0.0	0.0	9.0	0.0	8.0	209.6
American Woodcock	<i>Scolopax minor</i>	0.0	32.2	0.0	15.8	0.0	0.0	0.0	0.0	0.0	0.0	0.0	3.0	0.0	0.0	51.0
Herring Gull	<i>Larus argentatus</i>	0.0	0.0	0.0	0.0	0.0	0.0	0.0	0.0	0.0	0.0	0.0	3.0	0.0	0.0	3.0
Common Nighthawk	<i>Chordeiles minor</i>	0.0	32.2	0.0	0.0	0.0	0.0	68.3	0.0	0.0	0.0	0.0	6.0	18.7	0.0	125.2
Whip Poor Will	<i>Antrostomus vociferus</i>	0.0	43.0	0.0	0.0	0.0	0.0	11.4	0.0	0.0	0.0	0.0	0.0	0.0	0.0	54.4
Chimney Swift	<i>Chaetura pelagica</i>	0.0	0.0	0.0	0.0	0.0	0.0	0.0	0.0	0.0	0.0	0.0	3.0	0.0	0.0	3.0
Yellow-bellied Sapsucker	<i>Sphyrapicus varius</i>	0.0	53.7	0.0	0.0	0.0	0.0	0.0	0.0	0.0	0.0	0.0	3.0	0.0	0.0	56.7
Downy Woodpecker	<i>Picoides pubescens</i>	0.0	21.5	0.0	0.0	0.0	0.0	11.4	0.0	0.0	0.0	0.0	3.0	0.0	0.0	35.9
Hairy Woodpecker	<i>Picoides villosus</i>	0.0	10.7	0.0	0.0	0.0	0.0	0.0	0.0	0.0	0.0	0.0	0.0	0.0	0.0	10.7
American Three-toed Woodpecker	<i>Picoides dorsalis</i>	0.0	10.7	0.0	0.0	0.0	0.0	0.0	0.0	0.0	0.0	0.0	6.0	0.0	0.0	16.8
Northern Flicker	<i>Colaptes auratus</i>	0.0	32.2	0.0	0.0	0.0	0.0	0.0	0.0	0.0	0.0	0.0	3.0	0.0	0.0	35.2
Pileated Woodpecker	<i>Dryocopus pileatus</i>	0.0	32.2	71.7	0.0	0.0	0.0	0.0	0.0	0.0	0.0	0.0	6.0	0.0	8.0	117.9
Woodpecker species	NA	0.0	21.5	0.0	0.0	0.0	0.0	0.0	0.0	0.0	0.0	0.0	0.0	0.0	0.0	21.5
Olive-sided Flycatcher	<i>Contopus cooperi</i>	0.0	0.0	0.0	0.0	0.0	0.0	0.0	0.0	0.0	0.0	0.0	3.0	0.0	0.0	3.0
Eastern Wood Pewee	<i>Contopus virens</i>	0.0	10.7	0.0	0.0	0.0	0.0	0.0	0.0	0.0	0.0	0.0	0.0	0.0	0.0	10.7
Alder Flycatcher	<i>Empidonax alnorum</i>	229.3	43.0	71.7	0.0	0.0	0.0	0.0	0.0	0.0	8.1	0.0	6.0	0.0	8.0	366.0
Least Flycatcher	<i>Empidonax minimus</i>	0.0	107.5	71.7	0.0	0.0	0.0	22.8	0.0	0.0	0.0	0.0	9.0	0.0	0.0	210.9
Blue-headed Vireo	<i>Vireo solitarius</i>	0.0	10.7	0.0	0.0	0.0	0.0	0.0	0.0	0.0	0.0	0.0	0.0	0.0	0.0	10.7
Warbling Vireo	<i>Vireo gilvus</i>	0.0	32.2	0.0	0.0	0.0	0.0	0.0	0.0	0.0	0.0	0.0	12.0	0.0	0.0	44.3
Philadelphia Vireo	<i>Vireo philadelphicus</i>	0.0	10.7	0.0	0.0	0.0	0.0	0.0	0.0	0.0	0.0	0.0	0.0	18.7	0.0	29.4
Red-eyed Vireo	<i>Vireo olivaceus</i>	114.6	300.9	143.3	31.6	3.2	0.0	56.9	0.0	0.0	24.2	0.0	54.1	37.4	8.0	774.2
Blue Jay	<i>Cyanocitta cristata</i>	0.0	75.2	0.0	0.0	0.0	0.0	0.0	0.0	0.0	8.1	0.0	3.0	0.0	0.0	86.3
American Crow	<i>Corvus brachyrhynchos</i>	0.0	21.5	0.0	31.6	0.0	0.0	0.0	0.0	0.0	0.0	0.0	3.0	0.0	0.0	56.1
Common Raven	<i>Corvus corax</i>	0.0	64.5	71.7	15.8	0.0	0.0	11.4	0.0	0.0	8.1	28.9	6.0	0.0	0.0	206.3
Black-capped Chickadee	<i>Poecile atricapillus</i>	0.0	118.2	0.0	31.6	0.0	0.0	11.4	0.0	0.0	8.1	0.0	27.1	0.0	0.0	196.3
Boreal Chickadee	<i>Poecile hudsonicus</i>	0.0	10.7	0.0	0.0	0.0	0.0	0.0	0.0	0.0	0.0	0.0	6.0	0.0	0.0	16.8
Red-breasted Nuthatch	<i>Sitta canadensis</i>	0.0	10.7	0.0	0.0	0.0	0.0	0.0	0.0	0.0	0.0	0.0	0.0	0.0	0.0	10.7
White Breasted Nuthatch	<i>Sitta carolinensis</i>	114.6	150.4	71.7	47.4	0.0	0.0	22.8	0.0	0.0	8.1	0.0	9.0	0.0	0.0	424.0
Brown Creeper	<i>Certhia americana</i>	0.0	0.0	0.0	0.0	0.0	0.0	0.0	0.0	0.0	0.0	0.0	3.0	0.0	0.0	3.0
Winter Wren	<i>Troglodytes hiemalis</i>	0.0	21.5	0.0	0.0	0.0	0.0	0.0	0.0	0.0	0.0	0.0	0.0	0.0	0.0	21.5
Golden-crowned Kinglet	<i>Regulus satrapa</i>	0.0	64.5	0.0	0.0	0.0	0.0	34.1	0.0	0.0	8.1	0.0	42.1	0.0	0.0	148.8
Ruby-crowned Kinglet	<i>Regulus calendula</i>	0.0	64.5	0.0	0.0	0.0	0.0	22.8	0.0	0.0	0.0	0.0	15.0	0.0	0.0	102.3
Veery	<i>Catharus fuscescens</i>	0.0	311.6	215.0	47.4	3.2	0.0	22.8	0.0	0.0	24.2	0.0	42.1	18.7	0.0	684.9
Swainson's Thrush	<i>Catharus ustulatus</i>	0.0	21.5	0.0	0.0	0.0	0.0	0.0	0.0	0.0	0.0	0.0	3.0	18.7	0.0	43.2
Hermit Thrush	<i>Catharus guttatus</i>	229.3	247.2	143.3	31.6	0.0	0.0	22.8	0.0	0.0	24.2	0.0	30.1	18.7	0.0	747.1
American Robin	<i>Turdus migratorius</i>	114.6	139.7	0.0	0.0	0.0	0.0	0.0	0.0	0.0	8.1	0.0	39.1	0.0	0.0	301.5

ANNEX 1: Third Round of Information Requirements for the Magino Gold Project Environmental Impact Statement (IR-3) - Clarifications

Habitat Type		Upland Forest					Mineral Wetlands	Peat Wetlands					Disturbed	Open Water		Total
Ecosite Type		B049	B055	B065	B070	B119	B134	B128	B136	B138	B144	B147	Disturbed	LA	OW	
Aerial Extent (ha)		360	1316	225	595	10	48	250	69	35	51	91	170	411	25	3655
Species																
Gray Catbird	<i>Dumetella carolinensis</i>	0.0	10.7	0.0	0.0	0.0	0.0	0.0	0.0	0.0	0.0	0.0	0.0	0.0	0.0	10.7
Cedar Waxwing	<i>Bombycilla cedrorum</i>	687.9	279.4	71.7	31.6	0.0	0.0	0.0	0.0	0.0	0.0	0.0	36.1	0.0	0.0	1106.6
Tennessee Warbler	<i>Oreothlypis peregrina</i>	0.0	21.5	0.0	15.8	0.0	0.0	0.0	0.0	0.0	8.1	0.0	9.0	0.0	8.0	62.3
Nashville Warbler	<i>Oreothlypis ruficapilla</i>	0.0	32.2	0.0	15.8	0.0	0.0	45.5	0.0	0.0	0.0	0.0	24.1	18.7	0.0	136.3
Northern Parula	<i>Setophaga americana</i>	0.0	129.0	0.0	0.0	0.0	0.0	0.0	0.0	0.0	8.1	0.0	12.0	0.0	0.0	149.1
Yellow Warbler	<i>Setophaga petechia</i>	0.0	43.0	0.0	15.8	0.0	0.0	0.0	0.0	0.0	0.0	0.0	6.0	0.0	0.0	64.8
Chestnut-sided Warbler	<i>Setophaga pennsylvanica</i>	343.9	462.1	215.0	110.5	3.2	0.0	11.4	0.0	0.0	24.2	0.0	78.2	37.4	0.0	1285.9
Magnolia Warbler	<i>Setophaga magnolia</i>	0.0	10.7	0.0	31.6	0.0	0.0	0.0	0.0	5.5	0.0	0.0	9.0	0.0	0.0	56.9
Black-throated Blue Warbler	<i>Setophaga caerulescens</i>	0.0	182.7	0.0	0.0	3.2	0.0	0.0	0.0	0.0	8.1	0.0	3.0	0.0	0.0	196.9
Yellow-rumped Warbler	<i>Setophaga coronata</i>	0.0	139.7	0.0	31.6	0.0	0.0	34.1	0.0	0.0	24.2	0.0	39.1	0.0	0.0	268.7
Black-throated Green Warbler	<i>Setophaga virens</i>	0.0	225.7	0.0	31.6	0.0	0.0	34.1	0.0	0.0	16.1	0.0	27.1	18.7	8.0	361.2
Bay-breasted Warbler	<i>Setophaga castanea</i>	0.0	10.7	0.0	0.0	0.0	0.0	0.0	0.0	0.0	0.0	0.0	0.0	0.0	0.0	10.7
Black-and-White Warbler	<i>Mniotilta varia</i>	114.6	182.7	0.0	31.6	3.2	0.0	11.4	0.0	0.0	0.0	0.0	21.1	37.4	0.0	401.9
American Redstart	<i>Setophaga ruticilla</i>	229.3	204.2	71.7	15.8	0.0	0.0	45.5	0.0	0.0	32.3	0.0	42.1	0.0	0.0	640.8
Ovenbird	<i>Seiurus aurocapilla</i>	114.6	408.4	286.6	47.4	0.0	0.0	68.3	0.0	0.0	24.2	0.0	63.2	56.1	0.0	1068.7
Kentucky Warbler	<i>Geothlypis formosa</i>	0.0	21.5	0.0	0.0	0.0	0.0	11.4	0.0	0.0	0.0	0.0	3.0	0.0	0.0	35.9
Common Yellowthroat	<i>Geothlypis trichas</i>	0.0	0.0	0.0	0.0	0.0	0.0	11.4	0.0	0.0	0.0	0.0	0.0	0.0	0.0	11.4
Scarlet Tanager	<i>Piranga olivacea</i>	0.0	0.0	0.0	0.0	0.0	0.0	0.0	0.0	0.0	0.0	0.0	3.0	0.0	0.0	3.0
Chipping Sparrow	<i>Spizella passerina</i>	229.3	0.0	0.0	0.0	0.0	0.0	0.0	0.0	0.0	0.0	0.0	6.0	0.0	0.0	235.3
Song Sparrow	<i>Melospiza melodia</i>	0.0	21.5	0.0	0.0	0.0	0.0	0.0	0.0	0.0	0.0	0.0	6.0	0.0	0.0	27.5
Swamp Sparrow	<i>Melospiza georgiana</i>	114.6	0.0	0.0	0.0	0.0	0.0	0.0	0.0	0.0	0.0	0.0	0.0	0.0	0.0	114.6
White-throated Sparrow	<i>Zonotrichia albicollis</i>	114.6	300.9	71.7	94.7	0.0	0.0	91.0	0.0	0.0	24.2	0.0	93.2	18.7	8.0	817.0
White-crowned Sparrow	<i>Zonotrichia leucophrys</i>	0.0	0.0	0.0	0.0	0.0	0.0	0.0	0.0	0.0	0.0	0.0	3.0	0.0	0.0	3.0
Dark-eyed Junco	<i>Junco hyemalis</i>	0.0	21.5	0.0	0.0	0.0	0.0	0.0	0.0	0.0	0.0	0.0	12.0	0.0	0.0	33.5
Rose-breasted Grosbeak	<i>Pheucticus ludovicianus</i>	0.0	10.7	0.0	0.0	0.0	0.0	11.4	0.0	0.0	0.0	0.0	0.0	0.0	0.0	22.1
Red-winged Blackbird	<i>Agelaius phoeniceus</i>	114.6	32.2	0.0	0.0	0.0	0.0	0.0	0.0	0.0	0.0	0.0	0.0	0.0	0.0	146.9
Common Grackle	<i>Quiscalus quiscula</i>	0.0	32.2	0.0	0.0	0.0	0.0	15.9	0.0	0.0	0.0	0.0	0.0	2877.0	0.0	2925.2
American Goldfinch	<i>Spinus tristis</i>	0.0	0.0	0.0	252.7	0.0	0.0	0.0	0.0	0.0	0.0	0.0	3.0	0.0	0.0	255.7
Total																16,674

Notes:

- Ecosite type B052 assigned to B049 as the closest ecosite type for which bird data are available.
- Ecosite type B067 assigned to B065 as the closest ecosite type for which bird data are available.
- Ecosite type B135 assigned to B134 as the closest ecosite type for which bird data are available.
- Ecosite types B127 and B129 assigned to B128 as the closest ecosite type for which bird data are available.
- Ecosite types B139 and B140 assigned to B136 as the closest ecosite type for which bird data are available.
- Ecosite type B146 assigned to B147 as the closest ecosite type for which bird data are available.

ANNEX 1: Third Round of Information Requirements for the Magino Gold Project Environmental Impact Statement (IR-3) - Clarifications

Table 2: Numbers of Breeding Pairs Expected to be Present in the Regional Study Area

Habitat Type		Upland Forest					Mineral Wetlands	Peat Wetlands					Disturbed	Open Water		Total
Ecosite Type		B049	B055	B065	B070	B119	B134	B128	B136	B138	B144	B147	Disturbed	LA	OW	
Aerial Extent (ha)		1,398	3,651	1,246	1,296	209	85	648	308	59	110	330	426	975	394	11,135
Species																
Common Loon	<i>Gavia immer</i>	0.0	238.5	0.0	0.0	0.0	0.0	29.5	0.0	0.0	17.5	0.0	15.1	133.1	0.0	433.7
Canada Goose	<i>Branta canadensis</i>	0.0	954.0	0.0	0.0	0.0	0.0	0.0	0.0	0.0	0.0	0.0	7.5	0.0	0.0	961.6
American Black Duck	<i>Anas rubripes</i>	0.0	59.6	0.0	0.0	0.0	0.0	0.0	0.0	0.0	0.0	420.4	0.0	0.0	0.0	480.0
Mallard	<i>Anas platyrhynchos</i>	0.0	29.8	0.0	0.0	0.0	0.0	29.5	0.0	0.0	0.0	0.0	0.0	0.0	0.0	59.3
Common Goldeneye	<i>Bucephala clangula</i>	0.0	0.0	0.0	0.0	0.0	0.0	0.0	0.0	0.0	0.0	105.1	0.0	0.0	0.0	105.1
Bald Eagle	<i>Haliaeetus leucocephalus</i>	0.0	0.0	0.0	0.0	0.0	0.0	0.0	0.0	0.0	0.0	0.0	7.5	0.0	0.0	7.5
Ruffed Grouse	<i>Bonasa umbellus</i>	0.0	238.5	0.0	0.0	0.0	0.0	0.0	0.0	0.0	0.0	0.0	30.1	0.0	0.0	268.7
Sandhill Crane	<i>Grus canadensis</i>	0.0	149.1	0.0	0.0	0.0	0.0	0.0	0.0	0.0	0.0	0.0	0.0	0.0	0.0	149.1
Killdeer	<i>Charadrius vociferus</i>	445.2	29.8	0.0	0.0	0.0	0.0	0.0	0.0	0.0	0.0	0.0	0.0	0.0	0.0	475.0
Wilson's Snipe	<i>Gallinago delicata</i>	0.0	29.8	793.6	34.4	0.0	0.0	59.0	0.0	0.0	0.0	0.0	22.6	0.0	125.5	1064.9
American Woodcock	<i>Scolopax minor</i>	0.0	89.4	0.0	34.4	0.0	0.0	0.0	0.0	0.0	0.0	0.0	7.5	0.0	0.0	131.4
Herring Gull	<i>Larus argentatus</i>	0.0	0.0	0.0	0.0	0.0	0.0	0.0	0.0	0.0	0.0	0.0	7.5	0.0	0.0	7.5
Common Nighthawk	<i>Chordeiles minor</i>	0.0	89.4	0.0	0.0	0.0	0.0	176.9	0.0	0.0	0.0	0.0	15.1	44.4	0.0	325.8
Whip Poor Will	<i>Antrostomus vociferus</i>	0.0	119.3	0.0	0.0	0.0	0.0	29.5	0.0	0.0	0.0	0.0	0.0	0.0	0.0	148.7
Chimney Swift	<i>Chaetura pelagica</i>	0.0	0.0	0.0	0.0	0.0	0.0	0.0	0.0	0.0	0.0	0.0	7.5	0.0	0.0	7.5
Yellow-bellied Sapsucker	<i>Sphyrapicus varius</i>	0.0	149.1	0.0	0.0	0.0	0.0	0.0	0.0	0.0	0.0	0.0	7.5	0.0	0.0	156.6
Downy Woodpecker	<i>Picoides pubescens</i>	0.0	59.6	0.0	0.0	0.0	0.0	29.5	0.0	0.0	0.0	0.0	7.5	0.0	0.0	96.6
Hairy Woodpecker	<i>Picoides villosus</i>	0.0	29.8	0.0	0.0	0.0	0.0	0.0	0.0	0.0	0.0	0.0	0.0	0.0	0.0	29.8
American Three-toed Woodpecker	<i>Picoides dorsalis</i>	0.0	29.8	0.0	0.0	0.0	0.0	0.0	0.0	0.0	0.0	0.0	15.1	0.0	0.0	44.9
Northern Flicker	<i>Colaptes auratus</i>	0.0	89.4	0.0	0.0	0.0	0.0	0.0	0.0	0.0	0.0	0.0	7.5	0.0	0.0	97.0
Pileated Woodpecker	<i>Dryocopus pileatus</i>	0.0	89.4	396.8	0.0	0.0	0.0	0.0	0.0	0.0	0.0	0.0	15.1	0.0	125.5	626.8
Woodpecker species	NA	0.0	59.6	0.0	0.0	0.0	0.0	0.0	0.0	0.0	0.0	0.0	0.0	0.0	0.0	59.6
Olive-sided Flycatcher	<i>Contopus cooperi</i>	0.0	0.0	0.0	0.0	0.0	0.0	0.0	0.0	0.0	0.0	0.0	7.5	0.0	0.0	7.5
Eastern Wood Pewee	<i>Contopus virens</i>	0.0	29.8	0.0	0.0	0.0	0.0	0.0	0.0	0.0	0.0	0.0	0.0	0.0	0.0	29.8
Alder Flycatcher	<i>Empidonax alnorum</i>	890.4	119.3	396.8	0.0	0.0	0.0	0.0	0.0	0.0	17.5	0.0	15.1	0.0	125.5	1564.6
Least Flycatcher	<i>Empidonax minimus</i>	0.0	298.1	396.8	0.0	0.0	0.0	59.0	0.0	0.0	0.0	0.0	22.6	0.0	0.0	776.5
Blue-headed Vireo	<i>Vireo solitarius</i>	0.0	29.8	0.0	0.0	0.0	0.0	0.0	0.0	0.0	0.0	0.0	0.0	0.0	0.0	29.8
Warbling Vireo	<i>Vireo gilvus</i>	0.0	89.4	0.0	0.0	0.0	0.0	0.0	0.0	0.0	0.0	0.0	30.1	0.0	0.0	119.6
Philadelphia Vireo	<i>Vireo philadelphicus</i>	0.0	29.8	0.0	0.0	0.0	0.0	0.0	0.0	0.0	0.0	0.0	0.0	44.4	0.0	74.2
Red-eyed Vireo	<i>Vireo olivaceus</i>	445.2	834.8	793.6	68.8	66.6	0.0	147.4	0.0	0.0	52.5	0.0	135.7	88.7	125.5	2758.8
Blue Jay	<i>Cyanocitta cristata</i>	0.0	208.7	0.0	0.0	0.0	0.0	0.0	0.0	0.0	17.5	0.0	7.5	0.0	0.0	233.7
American Crow	<i>Corvus brachyrhynchos</i>	0.0	59.6	0.0	68.8	0.0	0.0	0.0	0.0	0.0	0.0	0.0	7.5	0.0	0.0	136.0
Common Raven	<i>Corvus corax</i>	0.0	178.9	396.8	34.4	0.0	0.0	29.5	0.0	0.0	17.5	105.1	15.1	0.0	0.0	777.3
Black-capped Chickadee	<i>Poecile atricapillus</i>	0.0	328.0	0.0	68.8	0.0	0.0	29.5	0.0	0.0	17.5	0.0	67.8	0.0	0.0	511.6
Boreal Chickadee	<i>Poecile hudsonicus</i>	0.0	29.8	0.0	0.0	0.0	0.0	0.0	0.0	0.0	0.0	0.0	15.1	0.0	0.0	44.9
Red-breasted Nuthatch	<i>Sitta canadensis</i>	0.0	29.8	0.0	0.0	0.0	0.0	0.0	0.0	0.0	0.0	0.0	0.0	0.0	0.0	29.8
White Breasted Nuthatch	<i>Sitta carolinensis</i>	445.2	417.4	396.8	103.2	0.0	0.0	59.0	0.0	0.0	17.5	0.0	22.6	0.0	0.0	1461.7
Brown Creeper	<i>Certhia americana</i>	0.0	0.0	0.0	0.0	0.0	0.0	0.0	0.0	0.0	0.0	0.0	7.5	0.0	0.0	7.5
Winter Wren	<i>Troglodytes hiemalis</i>	0.0	59.6	0.0	0.0	0.0	0.0	0.0	0.0	0.0	0.0	0.0	0.0	0.0	0.0	59.6
Golden-crowned Kinglet	<i>Regulus satrapa</i>	0.0	178.9	0.0	0.0	0.0	0.0	88.4	0.0	0.0	17.5	0.0	105.5	0.0	0.0	390.4
Ruby-crowned Kinglet	<i>Regulus calendula</i>	0.0	178.9	0.0	0.0	0.0	0.0	59.0	0.0	0.0	0.0	0.0	37.7	0.0	0.0	275.5
Veery	<i>Catharus fuscescens</i>	0.0	864.6	1190.4	103.2	66.6	0.0	59.0	0.0	0.0	52.5	0.0	105.5	44.4	0.0	2486.2
Swainson's Thrush	<i>Catharus ustulatus</i>	0.0	59.6	0.0	0.0	0.0	0.0	0.0	0.0	0.0	0.0	0.0	7.5	44.4	0.0	111.5
Hermit Thrush	<i>Catharus guttatus</i>	890.4	685.7	793.6	68.8	0.0	0.0	59.0	0.0	0.0	52.5	0.0	75.4	44.4	0.0	2669.8
American Robin	<i>Turdus migratorius</i>	445.2	387.6	0.0	0.0	0.0	0.0	0.0	0.0	0.0	17.5	0.0	98.0	0.0	0.0	948.3

ANNEX 1: Third Round of Information Requirements for the Magino Gold Project Environmental Impact Statement (IR-3) - Clarifications

Habitat Type		Upland Forest					Mineral Wetlands	Peat Wetlands					Disturbed	Open Water		Total
Ecosite Type		B049	B055	B065	B070	B119	B134	B128	B136	B138	B144	B147	Disturbed	LA	OW	
Aerial Extent (ha)		1,398	3,651	1,246	1,296	209	85	648	308	59	110	330	426	975	394	11,135
Species																
Gray Catbird	<i>Dumetella carolinensis</i>	0.0	29.8	0.0	0.0	0.0	0.0	0.0	0.0	0.0	0.0	0.0	0.0	0.0	0.0	29.8
Cedar Waxwing	<i>Bombycilla cedrorum</i>	2671.3	775.2	396.8	68.8	0.0	0.0	0.0	0.0	0.0	0.0	0.0	90.4	0.0	0.0	4002.5
Tennessee Warbler	<i>Oreothlypis peregrina</i>	0.0	59.6	0.0	34.4	0.0	0.0	0.0	0.0	0.0	17.5	0.0	22.6	0.0	125.5	259.6
Nashville Warbler	<i>Oreothlypis ruficapilla</i>	0.0	89.4	0.0	34.4	0.0	0.0	117.9	0.0	0.0	0.0	0.0	60.3	44.4	0.0	346.4
Northern Parula	<i>Setophaga americana</i>	0.0	357.8	0.0	0.0	0.0	0.0	0.0	0.0	0.0	17.5	0.0	30.1	0.0	0.0	405.4
Yellow Warbler	<i>Setophaga petechia</i>	0.0	119.3	0.0	34.4	0.0	0.0	0.0	0.0	0.0	0.0	0.0	15.1	0.0	0.0	168.7
Chestnut-sided Warbler	<i>Setophaga pensylvanica</i>	1335.7	1282.0	1190.4	240.8	66.6	0.0	29.5	0.0	0.0	52.5	0.0	196.0	88.7	0.0	4482.1
Magnolia Warbler	<i>Setophaga magnolia</i>	0.0	29.8	0.0	68.8	0.0	0.0	0.0	0.0	9.4	0.0	0.0	22.6	0.0	0.0	130.6
Black-throated Blue Warbler	<i>Setophaga caerulea</i>	0.0	506.8	0.0	0.0	66.6	0.0	0.0	0.0	0.0	17.5	0.0	7.5	0.0	0.0	598.4
Yellow-rumped Warbler	<i>Setophaga coronata</i>	0.0	387.6	0.0	68.8	0.0	0.0	88.4	0.0	0.0	52.5	0.0	98.0	0.0	0.0	695.3
Black-throated Green Warbler	<i>Setophaga virens</i>	0.0	626.1	0.0	68.8	0.0	0.0	88.4	0.0	0.0	35.0	0.0	67.8	44.4	125.5	1056.0
Bay-breasted Warbler	<i>Setophaga castanea</i>	0.0	29.8	0.0	0.0	0.0	0.0	0.0	0.0	0.0	0.0	0.0	0.0	0.0	0.0	29.8
Black-and-White Warbler	<i>Mniotilta varia</i>	445.2	506.8	0.0	68.8	66.6	0.0	29.5	0.0	0.0	0.0	0.0	52.8	88.7	0.0	1258.4
American Redstart	<i>Setophaga ruticilla</i>	890.4	566.5	396.8	34.4	0.0	0.0	117.9	0.0	0.0	70.1	0.0	105.5	0.0	0.0	2181.6
Ovenbird	<i>Seiurus aurocapilla</i>	445.2	1132.9	1587.3	103.2	0.0	0.0	176.9	0.0	0.0	52.5	0.0	158.3	133.1	0.0	3789.4
Kentucky Warbler	<i>Geothlypis formosa</i>	0.0	59.6	0.0	0.0	0.0	0.0	29.5	0.0	0.0	0.0	0.0	7.5	0.0	0.0	96.6
Common Yellowthroat	<i>Geothlypis trichas</i>	0.0	0.0	0.0	0.0	0.0	0.0	29.5	0.0	0.0	0.0	0.0	0.0	0.0	0.0	29.5
Scarlet Tanager	<i>Piranga olivacea</i>	0.0	0.0	0.0	0.0	0.0	0.0	0.0	0.0	0.0	0.0	0.0	7.5	0.0	0.0	7.5
Chipping Sparrow	<i>Spizella passerina</i>	890.4	0.0	0.0	0.0	0.0	0.0	0.0	0.0	0.0	0.0	0.0	15.1	0.0	0.0	905.5
Song Sparrow	<i>Melospiza melodia</i>	0.0	59.6	0.0	0.0	0.0	0.0	0.0	0.0	0.0	0.0	0.0	15.1	0.0	0.0	74.7
Swamp Sparrow	<i>Melospiza georgiana</i>	445.2	0.0	0.0	0.0	0.0	0.0	0.0	0.0	0.0	0.0	0.0	0.0	0.0	0.0	445.2
White-throated Sparrow	<i>Zonotrichia albicollis</i>	445.2	834.8	396.8	206.4	0.0	0.0	235.9	0.0	0.0	52.5	0.0	233.7	44.4	125.5	2575.1
White-crowned Sparrow	<i>Zonotrichia leucophrys</i>	0.0	0.0	0.0	0.0	0.0	0.0	0.0	0.0	0.0	0.0	0.0	7.5	0.0	0.0	7.5
Dark-eyed Junco	<i>Junco hyemalis</i>	0.0	59.6	0.0	0.0	0.0	0.0	0.0	0.0	0.0	0.0	0.0	30.1	0.0	0.0	89.8
Rose-breasted Grosbeak	<i>Pheucticus ludovicianus</i>	0.0	29.8	0.0	0.0	0.0	0.0	29.5	0.0	0.0	0.0	0.0	0.0	0.0	0.0	59.3
Red-winged Blackbird	<i>Agelaius phoeniceus</i>	445.2	89.4	0.0	0.0	0.0	0.0	0.0	0.0	0.0	0.0	0.0	0.0	0.0	0.0	534.7
Common Grackle	<i>Quiscalus quiscula</i>	0.0	89.4	0.0	0.0	0.0	0.0	41.3	0.0	0.0	0.0	0.0	0.0	6825.0	0.0	6955.7
American Goldfinch	<i>Spinus tristis</i>	0.0	0.0	0.0	550.3	0.0	0.0	0.0	0.0	0.0	0.0	0.0	7.5	0.0	0.0	557.9
Total																53,015

Notes:

- Ecosite types B052 and B114 assigned to B049 as the closest ecosite type for which bird data are available
- Ecosite type B067 assigned to B065 as the closest ecosite type for which bird data are available
- Ecosite type B135 assigned to B134 as the closest ecosite type for which bird data are available
- Ecosite types B127 and B129 assigned to B128 as the closest ecosite type for which bird data are available
- Ecosite types B139, B140 and B141 assigned to B136 as the closest ecosite type for which bird data are available
- Ecosite type B146 assigned to B147 as the closest ecosite type for which bird data are available
- Aquatic habitat of 1,369 ha split proportionally to Project Development Area values

ANNEX 1: Third Round of Information Requirements for the Magino Gold Project Environmental Impact Statement (IR-3) - Clarifications

Table 3: Estimated Percentage Displacement of Breeding Bird Pairs Within the Local and Regional Areas

Species		Estimated Numbers of Breeding Pairs Present			Estimated Displacement Effect (%)	
		PSA	LSA	RSA	LSA	RSA
Common Loon	<i>Gavia immer</i>	60.7	167.5	433.7	36.3	14.0
Canada Goose	<i>Branta canadensis</i>	177.4	346.9	961.6	51.2	18.5
American Black Duck	<i>Anas rubripes</i>	41.4	137.1	480.0	30.2	8.6
Mallard	<i>Anas platyrhynchos</i>	11.2	22.1	59.3	50.9	19.0
Common Goldeneye	<i>Bucephala clangula</i>	7.6	28.9	105.1	26.3	7.2
Bald Eagle	<i>Haliaeetus leucocephalus</i>	1.4	3.0	7.5	47.4	18.9
Ruffed Grouse	<i>Bonasa umbellus</i>	49.7	98.0	268.7	50.7	18.5
Sandhill Crane	<i>Grus canadensis</i>	27.5	53.7	149.1	51.2	18.5
Killdeer	<i>Charadrius vociferus</i>	25.1	125.4	475.0	20.0	5.3
Wilson's Snipe	<i>Gallinago delicata</i>	36.3	209.6	1064.9	17.3	3.4
American Woodcock	<i>Scolopax minor</i>	22.5	51.0	131.4	44.2	17.2
Herring Gull	<i>Larus argentatus</i>	1.4	3.0	7.5	47.4	18.9
Common Nighthawk	<i>Chordeiles minor</i>	55.7	125.2	325.8	44.5	17.1
Whip Poor Will	<i>Antrostomus vociferus</i>	27.8	54.4	148.7	51.1	18.7
Chimney Swift	<i>Chaetura pelagica</i>	1.4	3.0	7.5	47.4	18.9
Yellow-bellied Sapsucker	<i>Sphyrapicus varius</i>	28.9	56.7	156.6	51.0	18.5
Downy Woodpecker	<i>Picoides pubescens</i>	18.2	35.9	96.6	50.7	18.8
Hairy Woodpecker	<i>Picoides villosus</i>	5.5	10.7	29.8	51.2	18.5
American Three-toed Woodpecker	<i>Picoides dorsalis</i>	8.3	16.8	44.9	49.8	18.6
Northern Flicker	<i>Colaptes auratus</i>	17.9	35.2	97.0	50.9	18.5
Pileated Woodpecker	<i>Dryocopus pileatus</i>	27.1	117.9	626.8	23.0	4.3
Woodpecker species	NA	11.0	21.5	59.6	51.2	18.5
Olive-sided Flycatcher	<i>Contopus cooperi</i>	1.4	3.0	7.5	47.4	18.9
Eastern Wood Pewee	<i>Contopus virens</i>	5.5	10.7	29.8	51.2	18.5
Alder Flycatcher	<i>Empidonax alnorum</i>	74.5	366.0	1564.6	20.4	4.8
Least Flycatcher	<i>Empidonax minimus</i>	73.4	210.9	776.5	34.8	9.5
Blue-headed Vireo	<i>Vireo solitarius</i>	5.5	10.7	29.8	51.2	18.5
Warbling Vireo	<i>Vireo gilvus</i>	22.2	44.3	119.6	50.1	18.6
Philadelphia Vireo	<i>Vireo philadelphicus</i>	7.3	29.4	74.2	24.8	9.9
Red-eyed Vireo	<i>Vireo olivaceus</i>	259.9	774.2	2758.8	33.6	9.4
Blue Jay	<i>Cyanocitta cristata</i>	42.6	86.3	233.7	49.4	18.2
American Crow	<i>Corvus brachyrhynchos</i>	21.6	56.1	136.0	38.6	15.9
Common Raven	<i>Corvus corax</i>	59.1	206.3	777.3	28.7	7.6
Black-capped Chickadee	<i>Poecile atricapillus</i>	91.0	196.3	511.6	46.4	17.8
Boreal Chickadee	<i>Poecile hudsonicus</i>	8.3	16.8	44.9	49.8	18.6
Red-breasted Nuthatch	<i>Sitta canadensis</i>	5.5	10.7	29.8	51.2	18.5
White Breasted Nuthatch	<i>Sitta carolinensis</i>	131.5	424.0	1461.7	31.0	9.0
Brown Creeper	<i>Certhia americana</i>	1.4	3.0	7.5	47.4	18.9
Winter Wren	<i>Troglodytes hiemalis</i>	11.0	21.5	59.6	51.2	18.5
Golden-crowned Kinglet	<i>Regulus satrapa</i>	72.9	148.8	390.4	49.0	18.7
Ruby-crowned Kinglet	<i>Regulus calendula</i>	51.6	102.3	275.5	50.5	18.7
Veery	<i>Catharus fuscescens</i>	223.2	684.9	2486.2	32.6	9.0
Swainson's Thrush	<i>Catharus ustulatus</i>	14.2	43.2	111.5	33.0	12.8
Hermit Thrush	<i>Catharus guttatus</i>	215.9	747.1	2669.8	28.9	8.1
American Robin	<i>Turdus migratorius</i>	112.3	301.5	948.3	37.3	11.8
Gray Catbird	<i>Dumetella carolinensis</i>	5.5	10.7	29.8	51.2	18.5
Cedar Waxwing	<i>Bombycilla cedrorum</i>	289.6	1106.6	4002.5	26.2	7.2

ANNEX 1: Third Round of Information Requirements for the Magino Gold Project Environmental Impact Statement (IR-3) - Clarifications

Species		Estimated Numbers of Breeding Pairs Present			Estimated Displacement Effect (%)	
		PSA	LSA	RSA	LSA	RSA
Tennessee Warbler	<i>Oreothlypis peregrina</i>	27.7	62.3	259.6	44.5	10.7
Nashville Warbler	<i>Oreothlypis ruficapilla</i>	57.3	136.3	346.4	42.1	16.5
Northern Parula	<i>Setophaga americana</i>	74.4	149.1	405.4	49.9	18.4
Yellow Warbler	<i>Setophaga petechia</i>	29.5	64.8	168.7	45.5	17.5
Chestnut-sided Warbler	<i>Setophaga pensylvanica</i>	390.6	1285.9	4482.1	30.4	8.7
Magnolia Warbler	<i>Setophaga magnolia</i>	22.0	56.9	130.6	38.6	16.8
Black-throated Blue Warbler	<i>Setophaga caerulescens</i>	98.2	196.9	598.4	49.9	16.4
Yellow-rumped Warbler	<i>Setophaga coronata</i>	124.6	268.7	695.3	46.4	17.9
Black-throated Green Warbler	<i>Setophaga virens</i>	167.1	361.2	1056.0	46.3	15.8
Bay-breasted Warbler	<i>Setophaga castanea</i>	5.5	10.7	29.8	51.2	18.5
Black-and-White Warbler	<i>Mniotilta varia</i>	142.3	401.9	1258.4	35.4	11.3
American Redstart	<i>Setophaga ruticilla</i>	204.7	640.8	2181.6	31.9	9.4
Ovenbird	<i>Seiurus aurocapilla</i>	330.9	1068.7	3789.4	31.0	8.7
Kentucky Warbler	<i>Geothlypis formosa</i>	18.2	35.9	96.6	50.7	18.8
Common Yellowthroat	<i>Geothlypis trichas</i>	5.7	11.4	29.5	50.5	19.5
Scarlet Tanager	<i>Piranga olivacea</i>	1.4	3.0	7.5	47.4	18.9
Chipping Sparrow	<i>Spizella passerina</i>	42.1	235.3	905.5	17.9	4.6
Song Sparrow	<i>Melospiza melodia</i>	13.9	27.5	74.7	50.3	18.5
Swamp Sparrow	<i>Melospiza georgiana</i>	19.6	114.6	445.2	17.1	4.4
White-throated Sparrow	<i>Zonotrichia albicollis</i>	309.1	817.0	2575.1	37.8	12.0
White-crowned Sparrow	<i>Zonotrichia leucophrys</i>	1.4	3.0	7.5	47.4	18.9
Dark-eyed Junco	<i>Junco hyemalis</i>	16.7	33.5	89.8	49.8	18.6
Rose-breasted Grosbeak	<i>Pheucticus ludovicianus</i>	11.2	22.1	59.3	50.9	19.0
Red-winged Blackbird	<i>Agelaius phoeniceus</i>	36.1	146.9	534.7	24.6	6.8
Common Grackle	<i>Quiscalus quiscula</i>	303.7	2925.2	6955.7	10.4	4.4
American Goldfinch	<i>Spinus tristis</i>	75.2	255.7	557.9	29.4	13.5
All Species		5,001	16,674	53,015	30.0	9.4