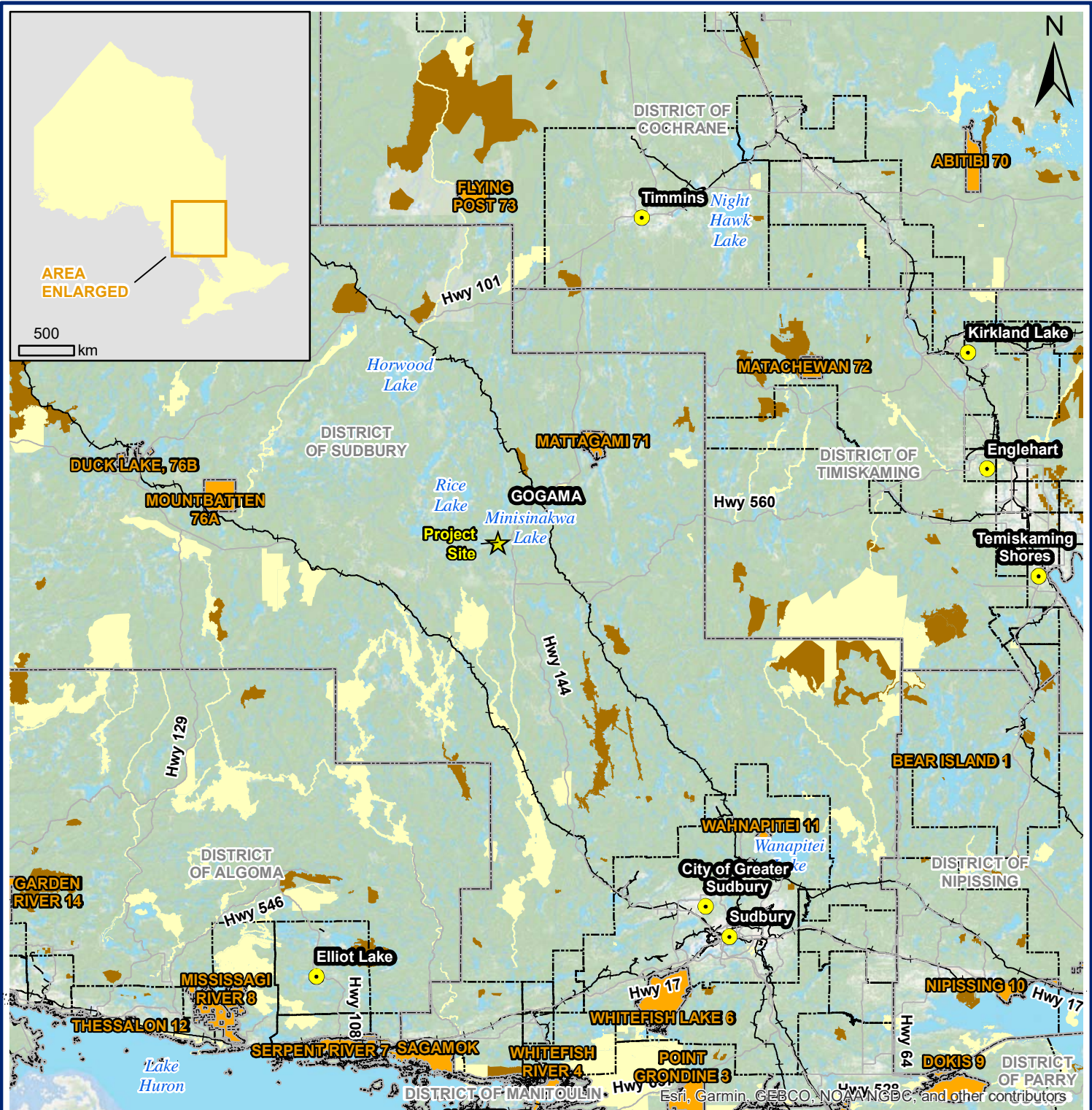



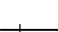

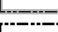







FIGURES

Côte Gold Project
Environmental Effects Review Report
September 2018
EA: EA 05-09-02; EAIMS: 13022; CEEA: 80036

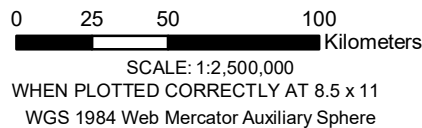


LEGEND

-  Regional Community
-  Project Site Location
-  Major Roads
-  Railway
-  Upper Tier Municipal Boundary
-  Lower Tier Municipal Boundary
-  Conservation Reserve (Regulated)
-  Provincial Park
-  First Nation Reserve
-  Wooded Area
-  Waterbody / Large Watercourse

NOTES

This map is for conceptual purposes only and should not be used for navigational purposes.
 Basedata: ESRI, GARMIN, GEBCO, MOAA NGDC, and others contributors



IAMGOLD

CÔTÉ GOLD PROJECT - ENVIRONMENTAL EFFECTS REVIEW

PROJECT LOCATION

September, 2018	Rev 0.0	Figure No.
Project No. 209.40564.00000		1-1



426000

428000

430000

432000

434000

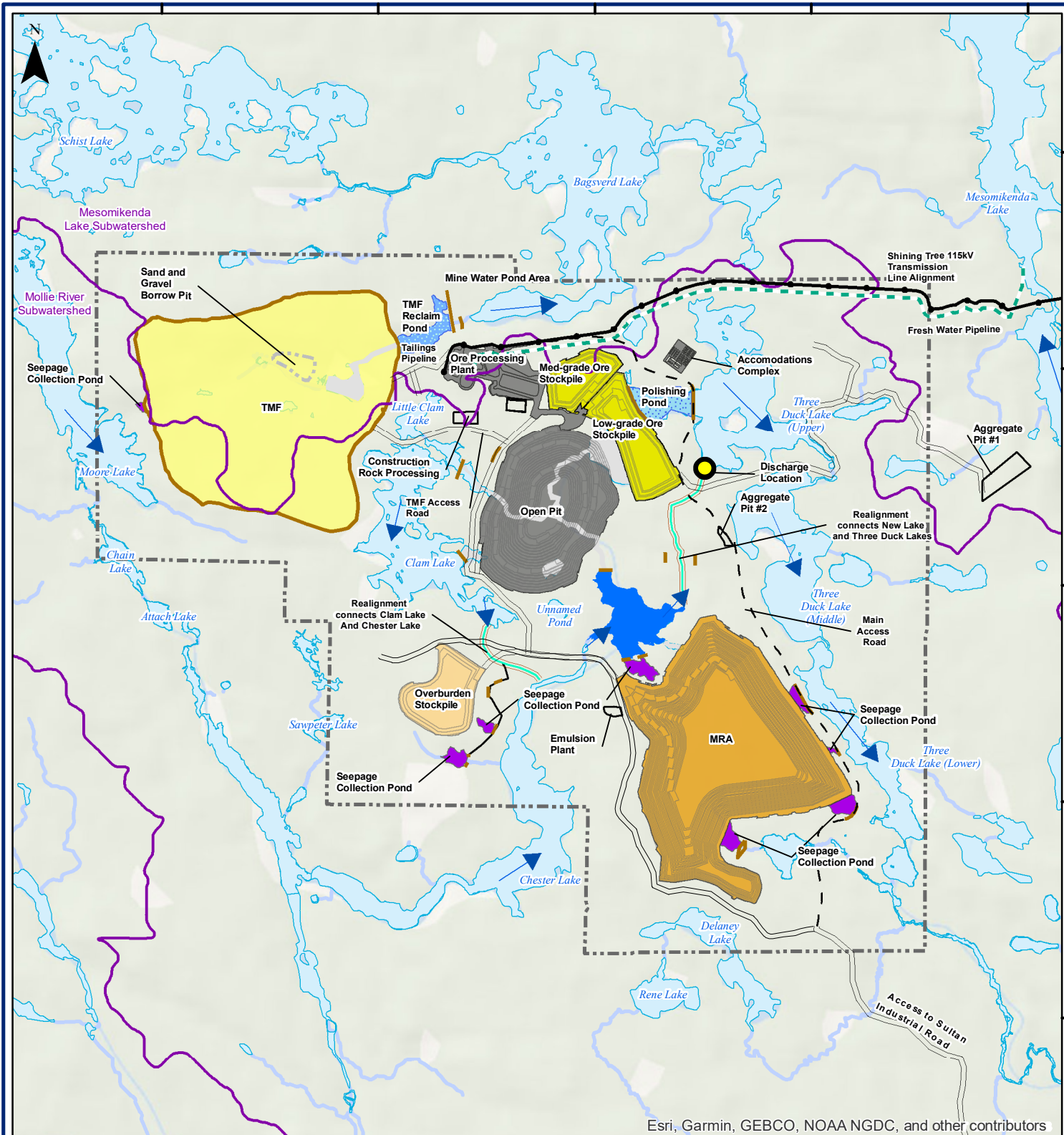
5270000

5268000

5266000

5264000

5262000



Esri, Garmin, GEBCO, NOAA NGDC, and other contributors

Legend

- Project Boundary
- Waterbody
- Overprinted Waterbody
- Watercourse
- Overprinted Watercourse
- Discharge Location
- Facility Road
- Main Access Road
- Water Flow Direction
- Dam
- Subwatershed Boundary
- Watercourse Realignment
- Shining Tree 115 kV Transmission Line Alignment
- Fresh Water Pipeline
- Overburden Stockpile
- Tailings Management Facility (TMF)
- Sand and Gravel Borrow Pit
- Open Pit, Process Plant, and Camp
- Mine Rock Area (MRA)
- Ore Stockpile
- Facilities
- New Lake
- TMF Reclaim Pond
- Seepage Collection Pond
- Polishing Pond

NOTES

This map is for conceptual purposes only and should not be used for navigational purposes.
 Basedata: All base data on this map was extracted from Land Information Ontario, MNDM, OBM Ontario Digital Geospatial Database and Ontario Road Network Database



1:50,000

WHEN PLOTTED CORRECTLY AT 8.5 x 11
NAD 1983 UTM Zone 17N

IAMGOLD

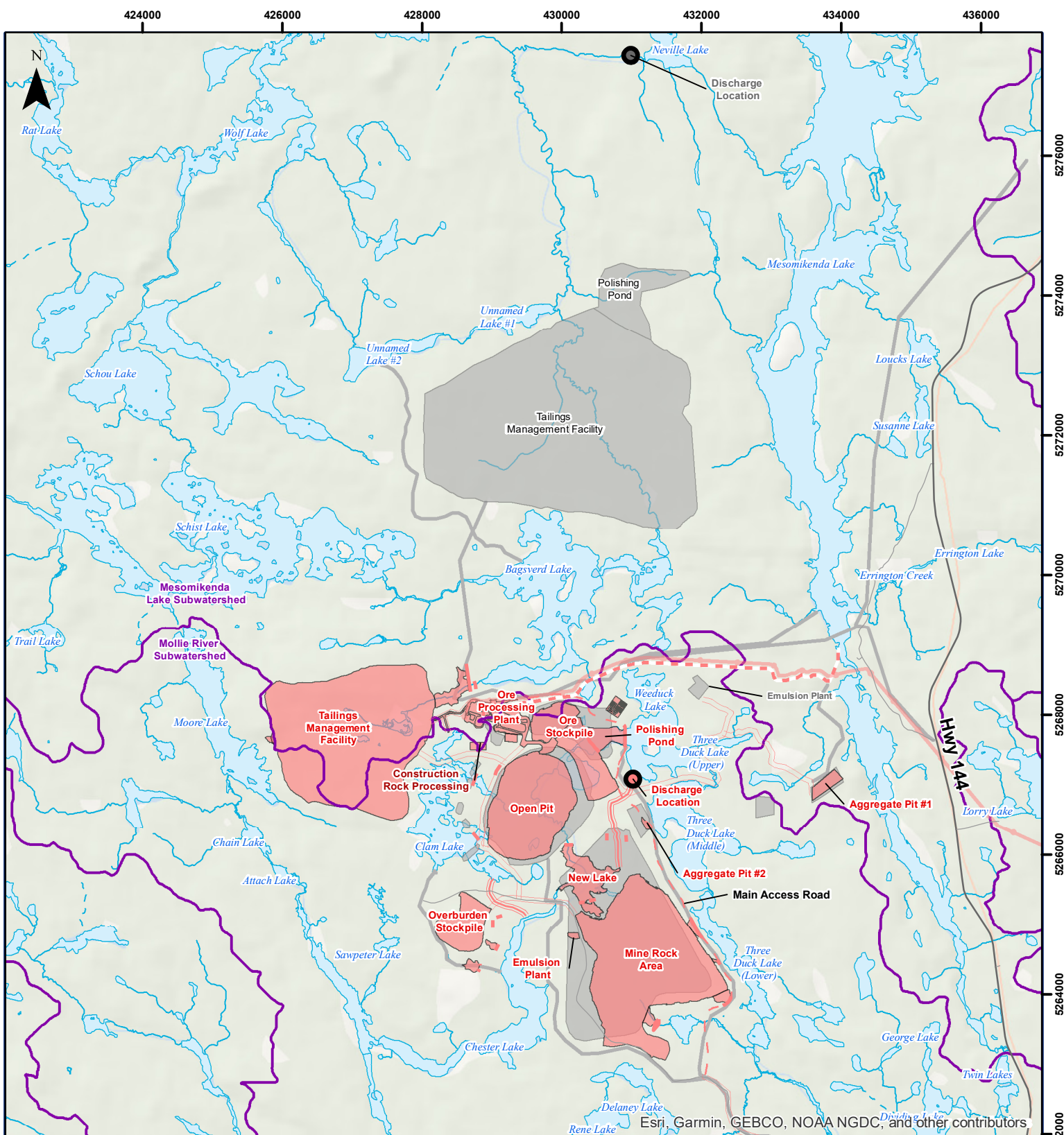
CÔTÉ GOLD PROJECT - ENVIRONMENTAL EFFECTS REVIEW
PROJECT SITE PLAN


September, 2018	Rev 0.0	Figure No.
Project No. 209.40564.00000		1-2







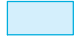



N:\Markham\GIS\Projects_GIS209_40564_COTE_Gold11_MXD\I\EER209_40564_ES_2_ProjectSitePlan.mxd

N:\Markham\GIS\Projects_GIS209_40564_COTE_Gold1\MXD\I\EER\209_40564_3_1_SiteComparison.mxd



IAMGOLD		
CÔTÉ GOLD PROJECT - ENVIRONMENTAL EFFECTS REVIEW		
SITE FACILITY COMPARISON		
EA AND EER		
September, 2018	Rev 0.0	Figure No.
Project No.	209.40564.00000	3-1
 SLR global environmental solutions		

Legend

- | | | |
|--|---|--|
|  Environmental Effects Review (EER) Site Facility |  Subwatershed Boundary |  Existing Permanent Watercourse |
|  Environmental Assessment (EA) Site Facility |  Waterbody |  Highway |
| |  Existing Intermittent Watercourse |  Other Road |

NOTES

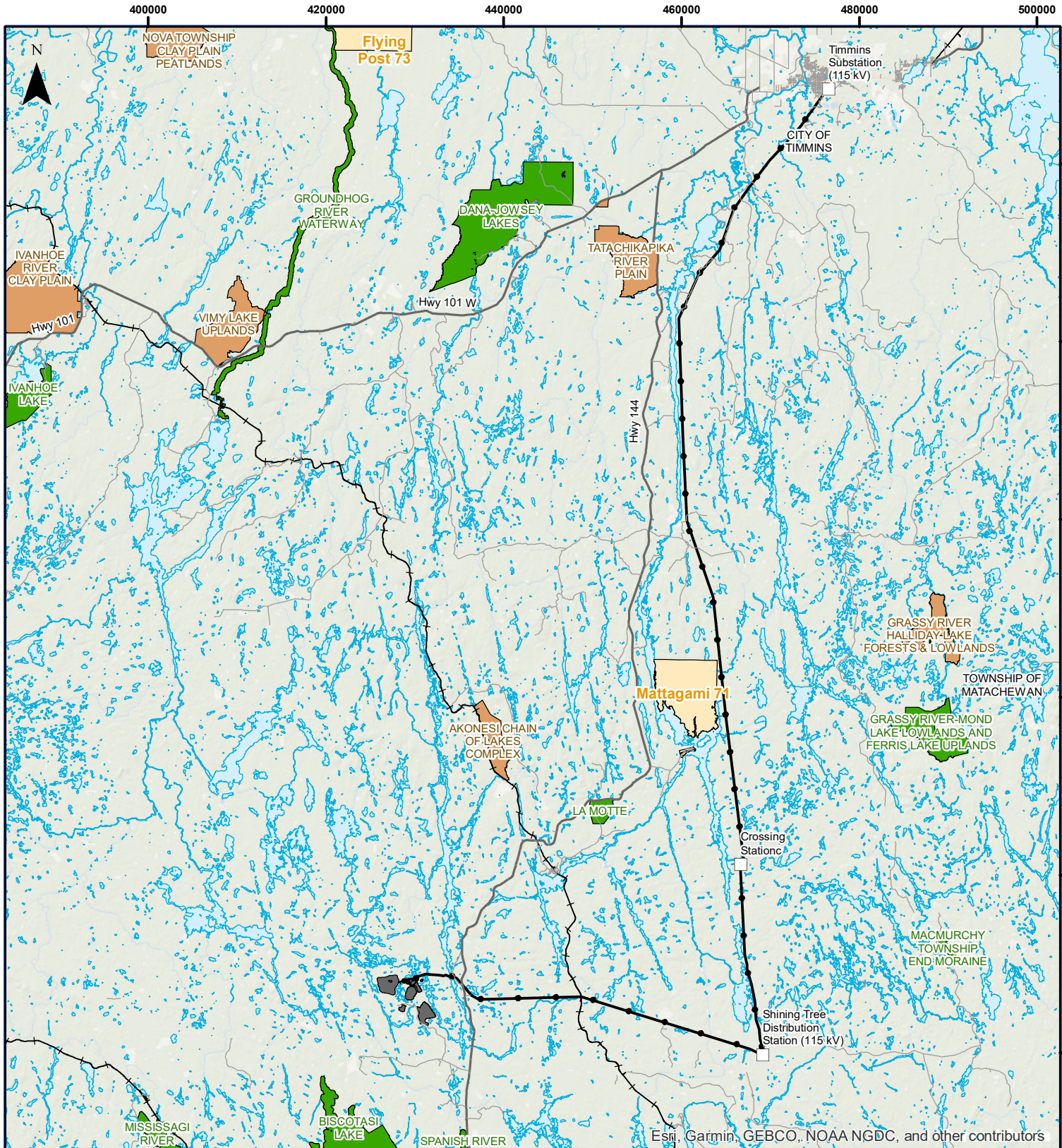
This map is for conceptual purposes only and should not be used for navigational purposes. Basedata: All base data on this map was extracted from Land Information Ontario, MNDM, OBM Ontario Digital Geospatial Database and Ontario Road Network Database



1:75,000

WHEN PLOTTED CORRECTLY AT 8.5 x 11
NAD 1983 UTM Zone 17N

N:\Markham\GIS\Projects_GIS\209_40564_COTE_Gold1.MXD\IEER\209_40564_3_2_TLA.mxd



Esri, Garmin, GEBCO, NOAA NGDC, and other contributors

Legend

- Substations
- Highway
- Other Road
- Shining Tree 115 kV Transmission Line Alignment
- Railway
- Project Footprint
- Conservation Reserve (Regulated)
- Provincial Park
- First Nation Reserve
- Waterbodies/ Large Watercourse

NOTES
 This map is for conceptual purposes only and should not be used for navigational purposes.
 Basedata: All base data on this map was extracted from Land Information Ontario, MNDM, OBM Ontario Digital Geospatial Database and Ontario Road Network Database

0 5 10 20 Kilometers

1:600,000
 WHEN PLOTTED CORRECTLY AT 8.5 x 11
 NAD 1983 UTM Zone 17N

IAMGOLD

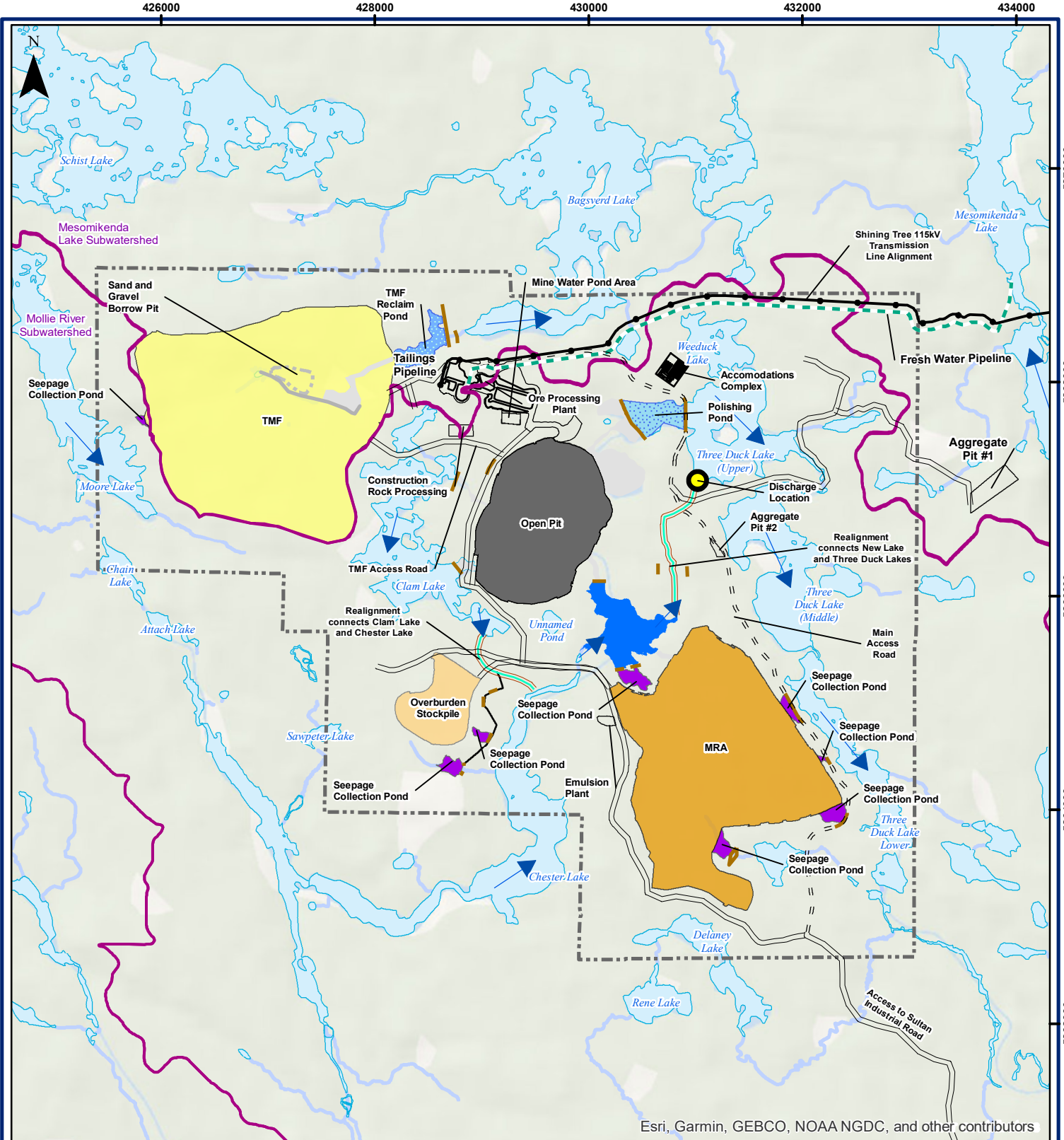
CÔTÉ GOLD PROJECT - ENVIRONMENTAL EFFECTS REVIEW

PROPOSED TRANSMISSION LINE ALIGNMENT

September, 2018	Rev 0.0	Figure No.
Project No.	209.40564.00000	3-2

SLR
 global environmental solutions

N:\Markham\GIS\Projects_GIS\COTE_Gold1\MXD\I\EER\209_40564_3_3_ConceptLayout1.mxd



Esri, Garmin, GEBCO, NOAA NGDC, and other contributors

Legend

- | | | | | |
|-------------------------------|---|------------------------------------|-------------------------|-------------------------|
| Project Boundary | Watercourse Realignment | Open Pit | Facilities | Subwatershed Boundary |
| Discharge Location | Shining Tree 115 kV Transmission Line Alignment | Tailings Management Facility (TMF) | New Lake | Waterbody |
| Proposed Water Flow Direction | Fresh Water Pipeline | Potential Borrow Area | Polishing Pond | Overprinted Waterbody |
| Main Access Road | Overburden Stockpile | Proposed Mine Rock Area (MRA) | TMF Reclaim Pond | Watercourse |
| Dam | Seepage Collection Pond | | Seepage Collection Pond | Overprinted Watercourse |

NOTES

This map is for conceptual purposes only and should not be used for navigational purposes. Basedata: All base data on this map was extracted from Land Information Ontario, MNDM, OBM Ontario Digital Geospatial Database and Ontario Road Network Database



1:50,000

WHEN PLOTTED CORRECTLY AT 8.5 x 11
NAD 1983 UTM Zone 17N

IAMGOLD

**CÔTÉ GOLD PROJECT - ENVIRONMENTAL EFFECTS REVIEW
CONCEPTUAL LAYOUT FOR END OF OPERATIONS**

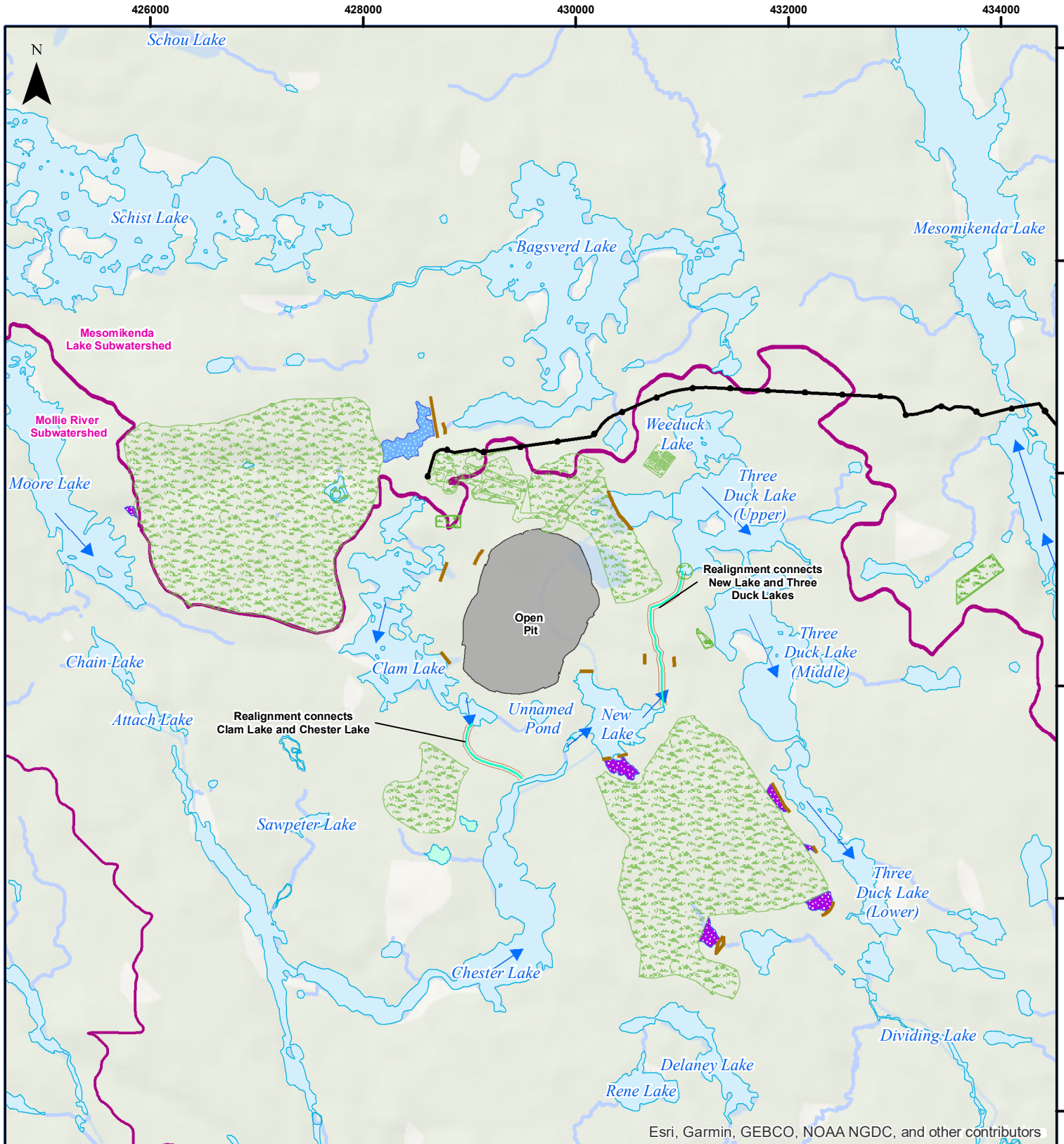
September, 2018 | Rev 0.0 | Figure No.

Project No. 209.40564.00000

3-3



N:\Markham\GIS\Projects_GIS209_40564_COTE_Gold1\MXD\I\EER\209_40564_3_4_Phase1.mxd



Esri, Garmin, GEBCO, NOAA NGDC, and other contributors

Legend

Subwatershed Boundary	Shining Tree 115 kV Transmission Line Alignment	Dam	Rehabilitated Ponds	Waterbody
Watercourse Realignment	Proposed Water Flow Direction	Open Pit	TMF Reclaim Pond	Watercourse
		Revegetated Area	Seepage Collection Pond	

NOTES
 This map is for conceptual purposes only and should not be used for navigational purposes.
 Basedata: All base data on this map was extracted from Land Information Ontario, MNDM, OBM Ontario Digital Geospatial Database and Ontario Road Network Database

0 0.5 1 2 Kilometers

1:50,000
 WHEN PLOTTED CORRECTLY AT 8.5 x 11
 NAD 1983 UTM Zone 17N

IAMGOLD

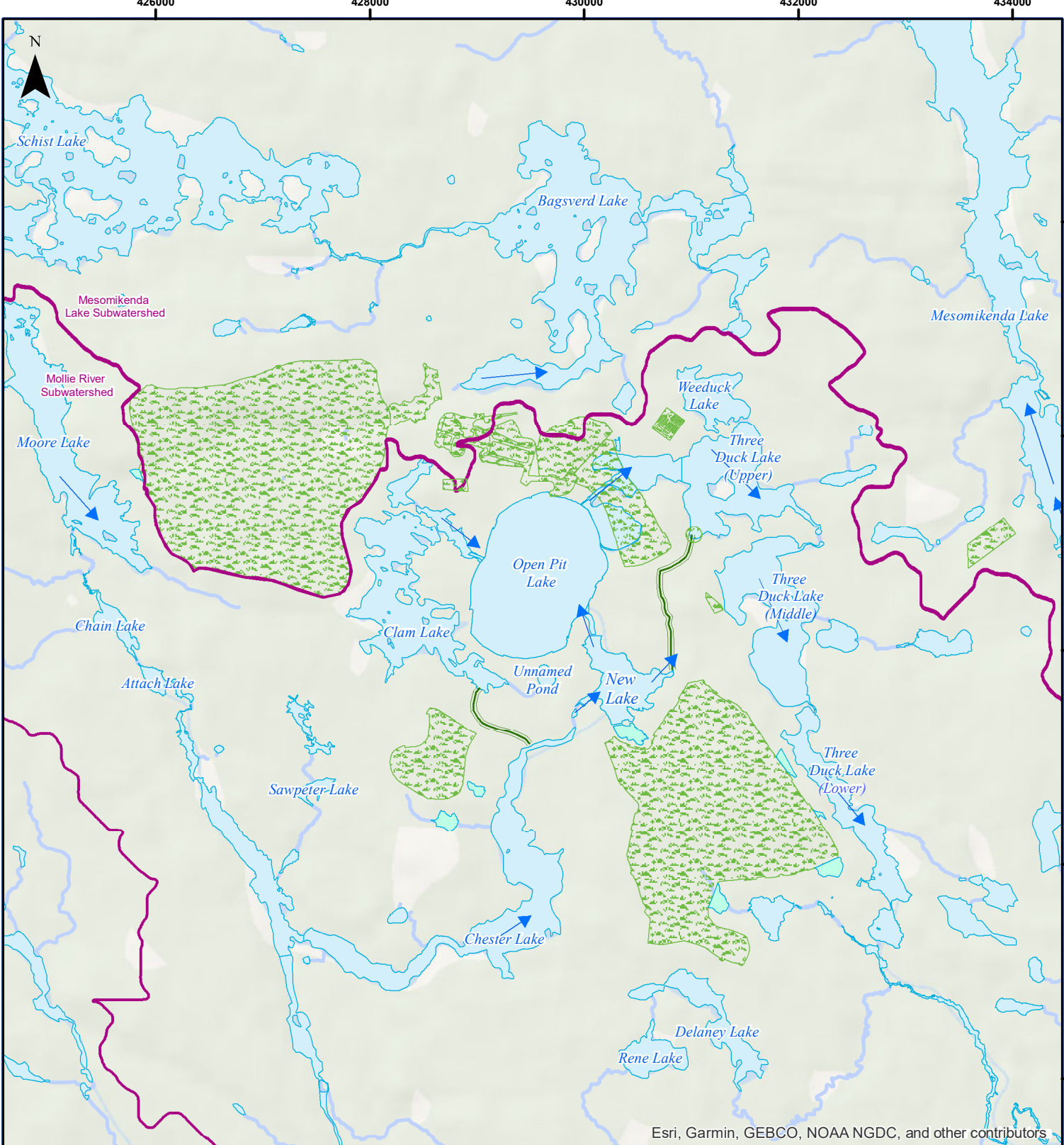
CÔTÉ GOLD PROJECT - ENVIRONMENTAL EFFECTS REVIEW

POST-CLOSURE STAGE I

September, 2018	Rev 0.0	Figure No.
Project No.	209.40564.00000	3-4








SLR
 global environmental solutions

N:\Markham\GIS\Projects_GIS\209_40564_COTE_Gold1\MXD\I\EER\209_40564_3_5_Phase2.mxd



Esri, Garmin, GEBCO, NOAA NGDC, and other contributors

Legend

-  Proposed Water Flow Direction
-  Decommissioned Realignments
-  Subwatershed Boundary
-  Rehabilitated Pond
-  Revegetated Area
-  Waterbody
-  Watercourse

NOTES

This map is for conceptual purposes only and should not be used for navigational purposes. Basedata: All base data on this map was extracted from Land Information Ontario, MNDM, OBM Ontario Digital Geospatial Database and Ontario Road Network Database



1:50,000

WHEN PLOTTED CORRECTLY AT 8.5 x 11
NAD 1983 UTM Zone 17N

IAMGOLD

CÔTÉ GOLD PROJECT - ENVIRONMENTAL EFFECTS REVIEW

POST-CLOSURE STAGE II

September, 2018	Rev 0.0	Figure No.
Project No. 209.40564.00000		3-5

