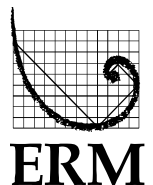


BRUCEJACK GOLD MINE PROJECT
Application for an Environmental Assessment Certificate /
Environmental Impact Statement

Appendix 3-C

Project Posters and Maps Displayed at DAIR Open Houses
(November 2013)



BRUCEJACK GOLD MINE PROJECT

Pretium Resources Inc. (Pretium)

Pretium is a Canadian mineral exploration company headquartered in Vancouver, British Columbia (BC) and focused on the exploration and development of the Brucejack Gold Mine Project. The Brucejack Gold Mine Project is a high-grade gold and silver deposit in northwest BC.



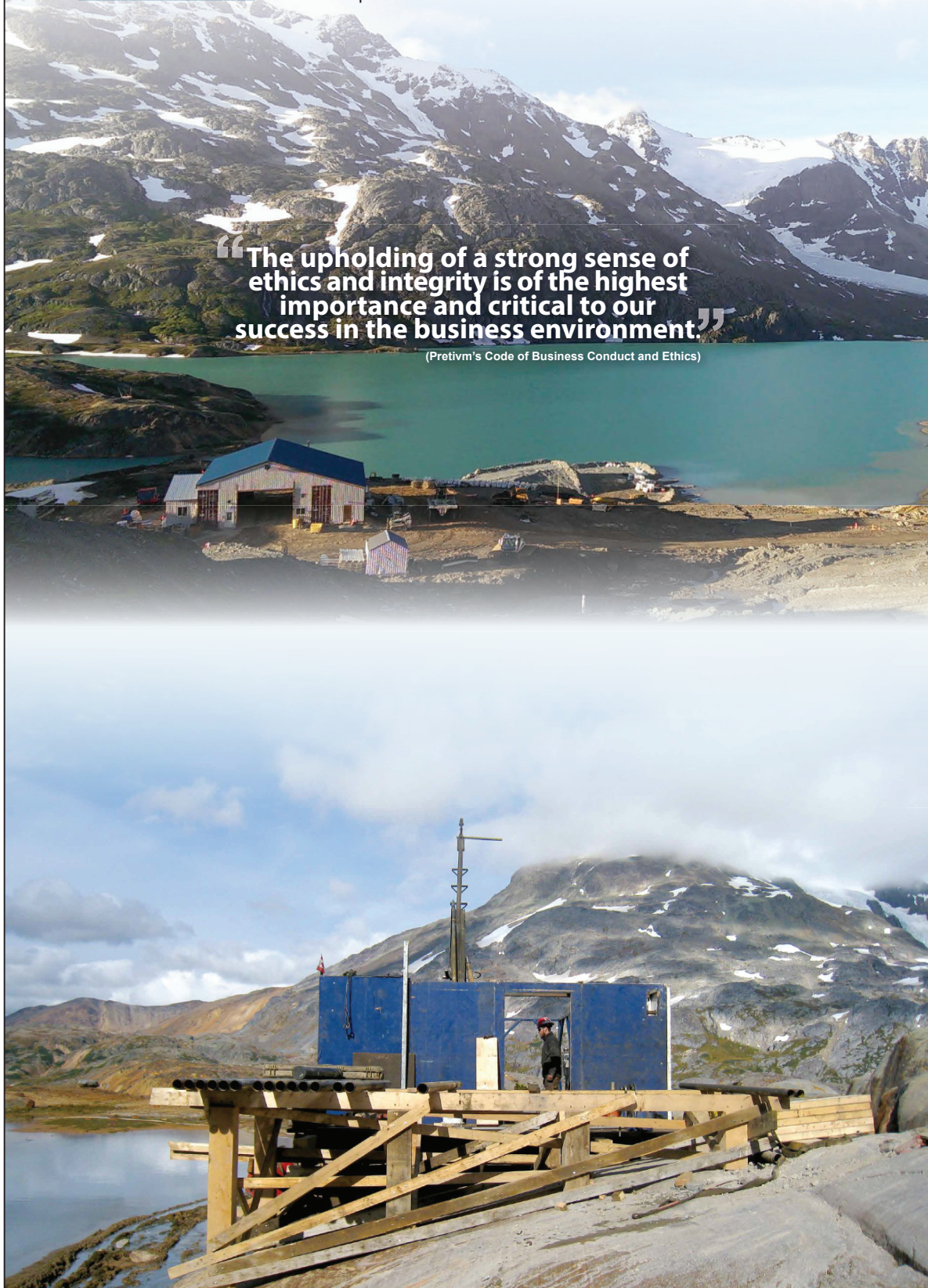
Environment, Health and Safety, and Community

At Pretium, we are committed to:

- Sustainable resource development that embodies the protection of human health and the natural environment.
- Creating and maintaining a safe working environment for the well-being of employees, contractors and the general public.
- Working cooperatively with local Aboriginal groups, communities, stakeholders, and the public to understand respective interests and concerns in order to maximize the benefits from mineral resource development.

“The upholding of a strong sense of ethics and integrity is of the highest importance and critical to our success in the business environment.”

(Pretium's Code of Business Conduct and Ethics)



BRUCEJACK GOLD MINE PROJECT



Project Overview

Project Location

The Brucejack Gold Mine Project is located near Brucejack Lake in northwest British Columbia. The mine area covers 10 hectares approximately 65 km north-northwest of Stewart, and 21 km south southeast of the closed Eskay Creek Mine. The Project is located within the Kitimat Stikine Regional District in an area of the province that has been the target of mineral exploration and mining since the late 1800s.



Project Highlights

Successful completion of the BC and Canadian environmental assessment processes for the construction and operation of the mine is expected in the second half of 2014. Following this, construction of the mine would likely begin in late 2014. Operations, or commercial production, would commence in 2016. Over a 22-year mine life the mine will produce approximately 19 million tonnes of ore at a rate of 2,700 tonnes per day. The Project will generate an average of approximately 400 jobs per year over 1-2 years of construction, and an average of approximately 550 jobs per year over 22 years of operations.



Current Activities and Project History

2013 Activities

- Preparation of mine engineering plans and permit documents.
- Preparation of the application for an Environmental Assessment Certificate.
- Additional drilling and exploration (10,000 tonne bulk sample).
- Updating mineral resource data.

Project History

2012	Completed additional drilling and exploration; initiated Feasibility Study; filed Project Description; completed access to Highway 37.
2011	Conducted a 72,144-meter drill program focused on the Valley of the Kings Zone.
2010 Dec.	Pretivm acquired Brucejack Project from Silver Standard Resources Inc. for C\$450 million; Pretivm IPO on TSX.
2009-2010	Exploration resumed, discovery of second deposit (Valley of the Kings Zone).
1999-2000	Acquisition by Silver Standard Resources Inc.
1993	Mine Development Certificate issued for West Zone.
1990	Feasibility Study completed for West Zone.
1986-1989	Development of West Zone underground workings.
1980-1985	Exploration and discovery of first deposit (West Zone) by mining company Newhawk Gold Mines/Granduc Mines.



BRUCEJACK GOLD MINE PROJECT

Project Overview

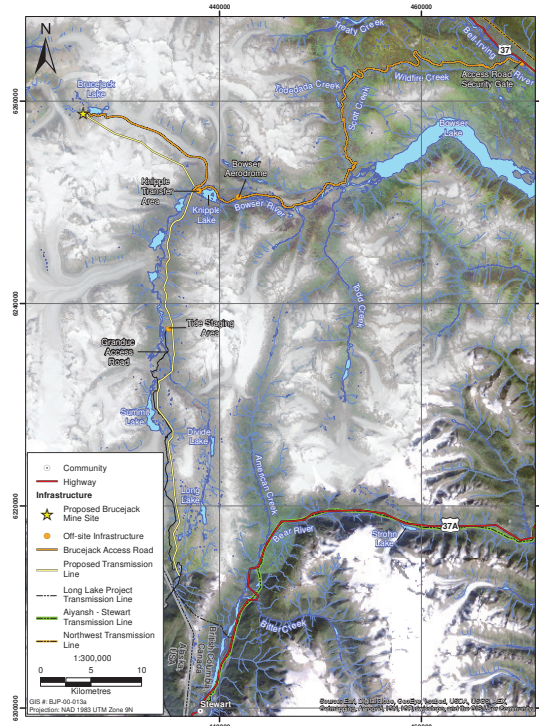
The Brucejack Gold Mine Project will be an underground mine that uses the mining technique called "long hole stoping." The ore that is collected underground will be processed using conventional sulphide flotation and gravity concentration. This process creates gold-silver doré and gold-silver flotation concentrate.

Production Totals

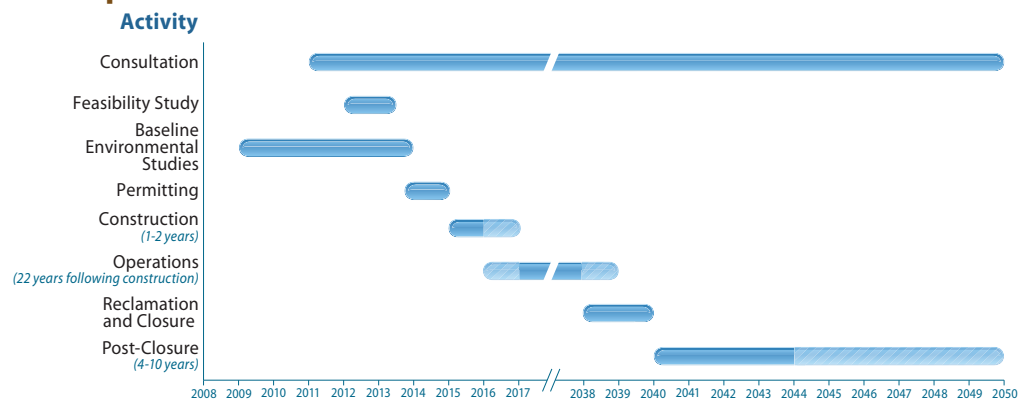
- A total of 7.3 million ounces of gold and 35.3 million ounces of silver expected to be produced over the 22-year life of the mine.

Shipping Methods

- Gold-silver doré bars are expected to be flown out from site and sold to refiners.
- Concentrate will be trucked out and either transported by rail (along Highway 16 corridor) or ship (via the port in Stewart) to end buyers.



Anticipated Timelines



BRUCEJACK GOLD MINE PROJECT

Project Components and Environmental Design

Generators

- State of the art generators and mobile equipment will meet the latest emission standards.
- Provide power during the construction phase until the power transmission line is complete.
- Used as a back-up power source during operations.

Water Supply and Treatment

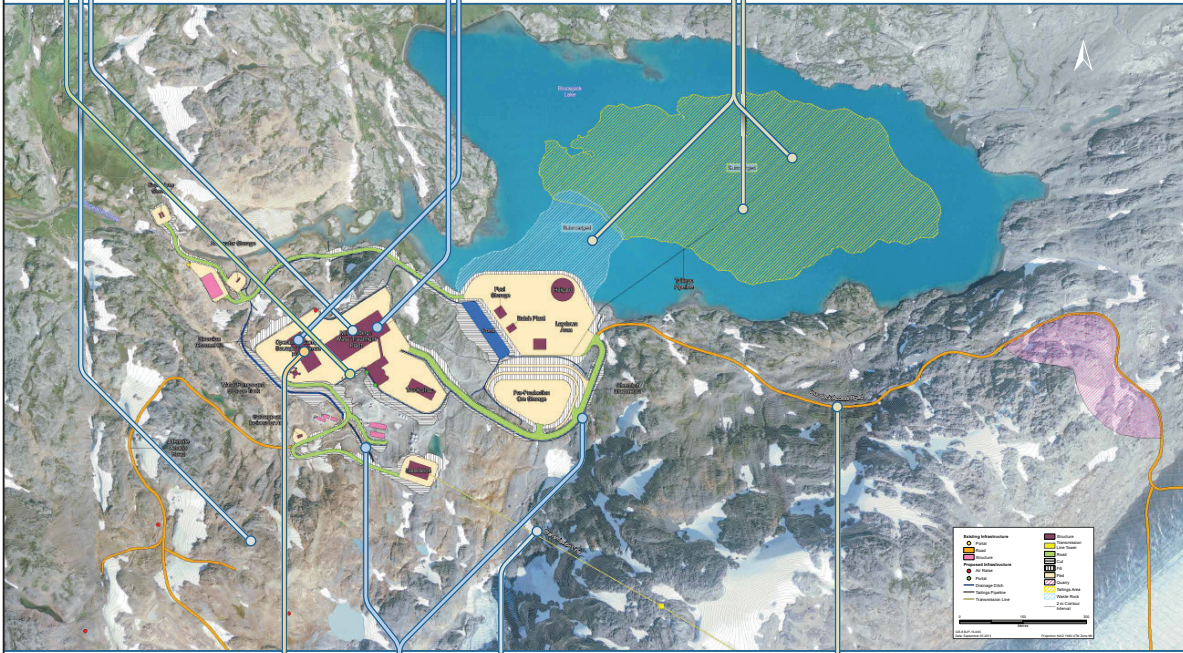
- Groundwater seepage into the underground mine areas will be pumped to the treatment plant and treated to meet environmental requirements before discharge.
- 1,800 m³/day of water collected from underground mine seepage water will be treated and recycled for use in process plant.
- Additional freshwater drawn from Brucejack Lake.
- Waste water from the operations camp will be treated to meet environmental requirements before discharge.

Waste Rock and Tailings Management

- Approximately half of the total tailings generated will be re-deposited in the underground mine.
- Tailings not placed underground will be safely stored and managed within the bottom 40 metres of Brucejack Lake, which has a maximum depth of 85 metres.
- Causeways will be constructed with non-acid generating waste rock so that trucks can dump waste rock at greater depths and to ensure that sufficient water cover (> 1 m) is maintained over the waste rock.
- A tailings discharge pipeline will extend along the bottom of Brucejack Lake to near the deepest part of the lake where the tailings are proposed to be deposited.

Emissions Management

- A number of activities (including blasting and primary crushing) will occur underground, greatly reducing air emissions to the outside environment.
- Sulphur dioxide (SO₂) emissions from the furnace will be reduced by over 90% through the use of a wet scrubber.
- Particulate emissions from process equipment will be controlled utilizing dust collectors that will reduce emissions by over 99%.



Camp

- Up to a 550-person modular camp.

Diversion Channels

- Fresh water diversion channels will divert clean water away from the Project mine site into Brucejack Lake and Brucejack Creek.

Transmission Line

- Power requirement for the mine (when operating at maximum production) will be approximately 20 to 30 Mega Watts (MW).
- One 138 kV power transmission line being considered, which would extend 55 km southeast and south from the mine site to the Long Lake Hydroelectric Project (currently under construction near Stewart, BC).
- By connecting to BC Hydro power lines, Project is far less reliant on diesel generators to produce power, thereby significantly reducing particulate, sulphur dioxide (SO₂) and nitrogen oxide (NO_x) emissions.

Access

- Existing 75 km exploration road west from Hwy 37 will be upgraded and used to access the mine site.
- Used year-round to transport personnel, equipment and supplies to the mine site, and to truck concentrate from the mine site to the port in Stewart or rail facilities along Hwy 16, via Hwy 37.
- Road will be gated and access controlled.
- Ongoing maintenance activities to reduce fugitive dust emissions, erosion, and impacts to streams crossed by the road.



BRUCEJACK GOLD MINE PROJECT

Mine Lifecycle and Employment

The Brucejack Gold Mine Project will create jobs, business opportunities and contribute to economic development in northwest BC. It will also provide tax revenue to the provincial and federal governments. The Project will provide employment and economic opportunities throughout the mine lifecycle.



Types of Jobs

Many types of jobs will be directly generated by the Brucejack Gold Mine Project, such as:

- Accounting Clerks
- Construction Electricians
- Construction Labourers
- Construction Millwrights and Industrial Mechanics
- Cooks and Kitchen Helpers
- Drillers and Blasters
- Environmental Technicians and Scientists
- First Aid Attendants
- Health and Safety Coordinators
- Heavy Equipment Operators
- HR Assistants
- Industrial Electricians
- Janitors and Caretakers
- Metallurgical and Materials Engineers
- Minerals and Metal Processing Labourers
- Plumbers
- Security Guards
- Steamfitters and Pipefitters
- Truck Drivers
- Underground Miners
- Welders



BRUCEJACK GOLD MINE PROJECT

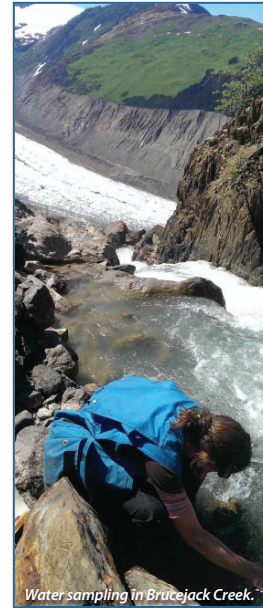
Environmental Study Program

We began studying the environmental conditions in the area surrounding and downstream of the proposed Project site in 2009. The environmental assessment being conducted for the Project involves assessing the potential effects of building and operating the Brucejack Gold Mine Project against existing conditions. Environmental management plans will be developed to prevent or minimize potential negative effects of the Project.

The following baseline work has been, or is currently being, conducted:

Fish and Fish Habitat

- Identifying fish species and distribution within and surrounding the Project Area.
- Assessing the quality of fish habitat within and surrounding the Project Area.
- Measuring indicators of fish health at sites in the Project Area.



Water sampling in Brucejack Creek.

Water Quality and Aquatic Resources

- Defining natural pH, nutrient levels and metal content in waterbodies near the Project.
- Defining temperature and chemical profiles for Brucejack Lake.
- Characterizing the biological communities of local streams and lakes.
- Identifying and defining abundance, richness and diversity of algae and invertebrate communities.



Water sampling.

Surface Water and Groundwater

- Establishing a hydrometric monitoring network and collecting data at streams, creeks, rivers, and lakes within the Project area (2009 to 2012).
- Obtaining regional hydrologic analyses based on Water Survey of Canada Stations to understand mean annual runoff, monthly distribution of runoff, and peak and low flows.
- Installing 24 Monitoring Wells and 23 Vibrating Wire Piezometers between 2010 and 2013 to monitor groundwater and water levels.
- Quarterly groundwater samples collected from nine monitoring wells for baseline characterization.

Geochemistry

- Testing and classifying rocks from the Project site for metal leaching and acid rock drainage potential.
- Collecting mineralogical information.
- Analyzing surface and underground water samples.
- Modelling geological and water quality.



BRUCEJACK GOLD MINE PROJECT

Environmental Study Program (continued)

The following baseline work has been, or is currently being, conducted:

Wildlife and Wildlife Habitat

- Identifying species at risk or of interest potentially occurring within the area.
- Conducting field surveys for moose, mountain goats, grizzly bears (DNA), wolverine (DNA), hoary marmots, bats, amphibians, waterbirds, landbirds, and raptors.
- Developing habitat suitability models for moose, mountain goat, grizzly bear, black bear, fisher, American marten, and hoary marmot.

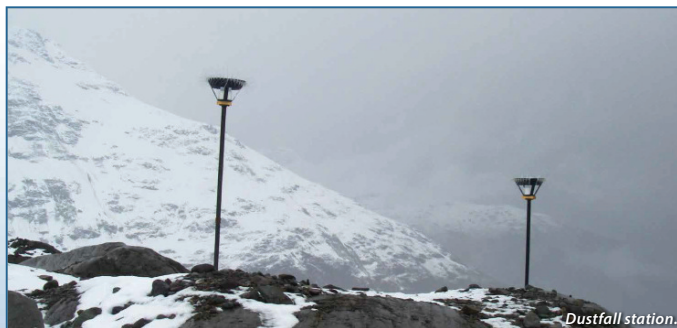


Terrestrial Ecology and Wetlands

- Characterizing terrestrial and wetland ecosystems within the area of the Project.
- Conducting desktop and field assessments of vegetation communities, terrain and soils, and rare plants present along the exploration access road, transmission line, and minesite.
- Surveying, mapping and classifying wetlands within and surrounding the Project area and describing wetland functions (91 Wetland Surveys conducted).

Air Quality, Meteorology and Noise

- Establishing a meteorological station to monitor wind, air temperature, rain/snow, atmospheric pressure, relative humidity and solar radiation within the Project site since 2009 (currently three active meteorological stations).
- Installing dustfall monitoring stations near the Project site to obtain knowledge of the baseline conditions.
- Measuring noise near the Project site.



Dustfall station.



Weather station.



BRUCEJACK GOLD MINE PROJECT

Human Environment Study Program

We began conducting socio-economic, land use, archeological/heritage, and country foods studies in 2009 in order to define the current state of the human environment near the Project site. Information collected during these studies will be used to predict how the Brucejack Gold Mine Project could affect communities near the Project, and to maximize the benefits of mineral resource development for local communities.



Pretivm is currently working with Skii km Lax Ha to complete a Traditional Knowledge and Use Study and has been in contact with Tahltan Nation to discuss the requirements of a similar study. Pretivm is also working with Nisga'a Lisims Government to complete an Economic, Social, Cultural Impact Assessment in accordance with the Nisga'a Final Agreement.

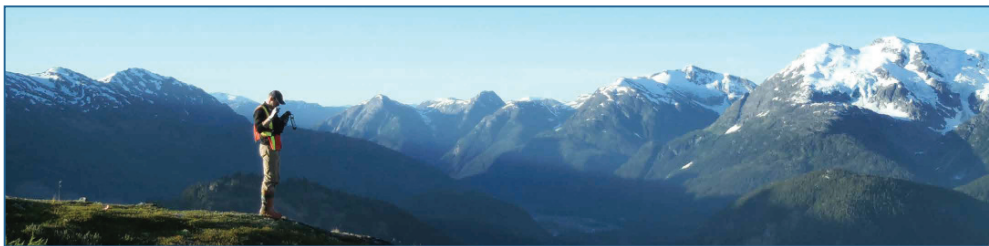
The following baseline work has been, or is currently being, conducted:

Socio-economics

- Creating a report on the social, economic, health, community and cultural environments of local communities.
- Conducting interviews in communities in the region about:
 - social and health services;
 - education; and
 - economic development;
 - emergency services.

Land Use

- Conducting a land use study to understand current and planned land and resource use and potential interactions with the Project including:
 - interviewing tenure holders (e.g. guide outfitters and trappers) in the Project area.



Archaeology and Heritage

- Conducting background research as well as Archaeological Impact Assessments in 2010, 2011, 2012, and 2013.
- Three archaeological sites have been recorded within the archaeological local study area and six sites within the regional study area. All archaeological sites are protected under the BC *Heritage Conservation Act*.

Country Foods

- Compiling chemistry data (from water, soil, vegetation, fish tissues) and information on the use of country foods by local Aboriginal communities.



- Modeling the quality of wildlife foods based on chemistry data.
- Estimating the exposure to naturally occurring metals that people experience when consuming country foods from the study area and providing a report explaining the results and uncertainties associated with these estimates.

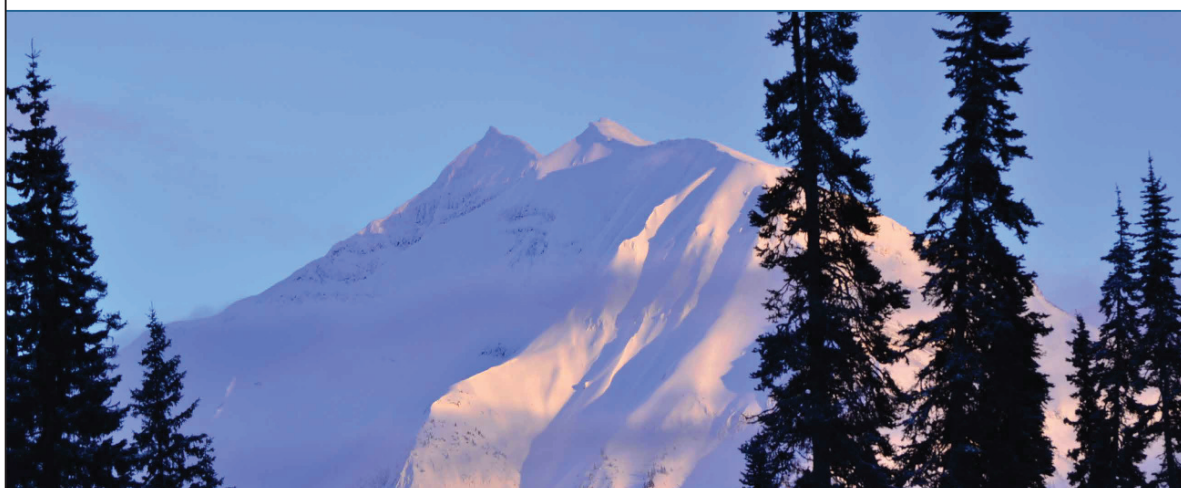


BRUCEJACK GOLD MINE PROJECT

Public Participation and Aboriginal Consultation

We are committed to sharing Project information and pursuing meaningful and culturally appropriate dialogue with local Aboriginal groups, the public and stakeholders throughout the life of our Project. We are speaking with:

- local and regional governments;
- government agencies (provincial and federal);
- Aboriginal groups including Nisga'a Nation, Tahltan Nation, Skii km Lax Ha, and Metis Nation BC;
- recreational and commercial land-users and tenure holders; economic development agencies; educational institutions; and other interested groups; and
- the general public.



As part of the environmental assessment (EA) being conducted for the Project there will be many opportunities to provide feedback. We will consider and, wherever possible, incorporate feedback received from Aboriginal groups, governments, stakeholders and the public into our Application for an EA Certificate; Project design; and the construction, operation, and closure and reclamation phases of the Project.

We welcome your comments and questions!
Contact us at:

Pretium Resources Inc.
www.pretivm.com
Joseph Ovsenek, Chief Development Officer
 Email: jovsenek@pretivm.com
 Toll Free: 1-877-558-1784
 Fax: 604-558-4784

