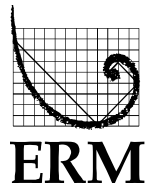


**BRUCEJACK GOLD MINE PROJECT**  
Application for an Environmental Assessment Certificate /  
Environmental Impact Statement

---

## **Appendix 3-K**

### **Brucejack Gold Mine Project: Aboriginal Consultation Plan**



Pretium Resources Inc.

# BRUCEJACK GOLD MINE PROJECT Aboriginal Consultation Plan



Rescan™ Environmental Services Ltd.  
Rescan Building, Sixth Floor - 1111 West Hastings Street  
Vancouver, BC Canada V6E 2J3  
Tel: (604) 689-9460 Fax: (604) 687-4277

September 2013

# BRUCEJACK GOLD MINE PROJECT ABORIGINAL CONSULTATION PLAN

September 2013  
Project #0194151-0017

Citation:

Rescan. 2013. *Brucejack Gold Mine Project: Aboriginal Consultation Plan*. Prepared for Pretium Resources Inc. by Rescan Environmental Services Ltd.: Vancouver, British Columbia.

Prepared for:



Pretium Resources Inc.

Prepared by:



Engineers and Scientists

Rescan™ Environmental Services Ltd.  
Vancouver, British Columbia

# Table of Contents

# BRUCEJACK GOLD MINE PROJECT

## ABORIGINAL CONSULTATION PLAN

### Table of Contents

---

Table of Contents .....	i
List of Figures .....	i
List of Tables .....	ii
Acronyms and Abbreviations .....	iii
1. Introduction .....	1-1
2. Brucejack Gold Mine Project Overview .....	2-1
3. Aboriginal Engagement Principles and Objectives .....	3-1
4. Engagement with Aboriginal Groups .....	4-1
4.1 Traditional Territories near the Project .....	4-1
4.2 Aboriginal Engagement Undertaken To Date .....	4-1
4.2.1 Engagement Activities .....	4-1
4.2.2 Traditional Knowledge/Traditional Use Studies .....	4-2
4.2.3 Project Agreements and Aboriginal Economic Participation .....	4-2
4.3 Pre-Application Stage .....	4-3
4.4 Application Review Stage .....	4-4
5. Engagement with Nisga’a Nation .....	5-1
5.1 Nisga’a Final Agreement .....	5-1
5.2 Nisga’a Nation Engagement Undertaken To Date .....	5-2
5.2.1 Engagement Activities .....	5-2
5.3 Pre-Application Stage .....	5-3
5.4 Application Review Stage .....	5-4
6. Key Contacts .....	6-1
References .....	R-1

### List of Figures

FIGURE	PAGE
Figure 1-1. Skii km Lax Ha Traditional Territory .....	1-2
Figure 1-2. Tahltan Nation Traditional Territory .....	1-3

**ABORIGINAL CONSULTATION PLAN**

Figure 1-3. Nisga’a Lands, the Nass Wildlife Area, and the Nass Area .....1-4  
Figure 1-4. Brucejack Gold Mine Project - Communities in the Regional Area .....1-5  
Figure 2-1. Location of the Brucejack Gold Mine Project .....2-2

**List of Tables**

<b>TABLE</b>	<b>PAGE</b>
Table 4.2-1. Pretivm’s Engagement with Skii km Lax Ha and Tahltan Nation, until July 31, 2013 .....	4-1
Table 5.2-1. Pretivm’s Engagement with Nisga’a Nation, until July 31, 2013.....	5-2

# Acronyms and Abbreviations

# Acronyms and Abbreviations

---

Terminology used in this document is defined where it is first used. The following list will assist readers who may choose to review only portions of the document.

<b>AIR</b>	Application Information Requirements
<b>Application</b>	Application for an Environmental Assessment Certificate
<b>BC</b>	British Columbia
<b>BCEAA</b>	<i>British Columbia Environmental Assessment Act</i>
<b>BC EAO</b>	BC Environmental Assessment Office
<b>CEAA</b>	<i>Canadian Environmental Assessment Act</i>
<b>CEA Agency</b>	Canadian Environmental Assessment Agency
<b>EA</b>	Environmental Assessment
<b>EIS</b>	Environmental Impact Statement
<b>ESCIA</b>	Economic, Social, Cultural Impact Assessment
<b>Guidelines</b>	Environmental Impact Statement Guidelines
<b>NFA</b>	Nisga'a Final Agreement
<b>NLG</b>	Nisga'a Lisims Government
<b>Order</b>	Section 11 Order
<b>Plan</b>	Aboriginal Consultation Plan
<b>Project</b>	Brucejack Gold Mine Project
<b>TCC</b>	Tahltan Central Council
<b>THREAT</b>	Tahltan Heritage Resources Environmental Assessment Team
<b>TK/TU</b>	Traditional Knowledge/Traditional Use
<b>TNDC</b>	Tahltan Nation Development Corporation



# 1. Introduction

# 1. Introduction

---

Pretium Resources Inc.'s (Pretivm) is proposing to develop an underground gold and silver mine, the Brucejack Gold Mine Project (the Project), with a production capacity of 2,700 tonnes per day over a minimum 22-year mine life, approximately 65 km north-northwest of Stewart, BC. The proposed Project is subject to the *British Columbia Environmental Assessment Act, 2002* (BCEAA 2002) and the *Canadian Environmental Assessment Act, 2012* (CEAA, 2012).

This Aboriginal Consultation Plan (the Plan) is intended to fulfill the requirements of sections 14.1 and 16.1 of the Section 11 Order (the Order), issued by the BC Environmental Assessment Office (BC EAO) on July 4, 2013 under the BCEAA, 2002. The content of the plan is informed by sections 14, 16, and 17 of the Order. Portions of the Project lie within the traditional territories of Skii km Lax Ha and Tahltan Nation, and the Nass Area as defined in the Nisga'a Final Agreement (Figures 1-1 to 1-4). The Order identifies the Aboriginal groups that must be consulted with respect to the potential effects of the Project. These groups include Skii km Lax Ha and Tahltan Nation, as represented by the Tahltan Central Council (TCC), and Nisga'a Nation, represented by Nisga'a Lisims Government (NLG). The Order identifies the BC EAO as being responsible for consulting with Gitanyow Wilp Wii'litsxw so that the wilp is informed of the progress of the environmental assessment (EA) and has the opportunity to raise issues pertaining to the EA process to the BC EAO. A draft of the Plan was provided to Skii km Lax Ha, TCC and Tahltan Heritage Resources Environmental Assessment Team (THREAT), and NLG for comment. Comments were provided by Skii km Lax Ha, and resulted in some changes to the wording in the Plan. NLG reviewed the plan and did not request any revisions.

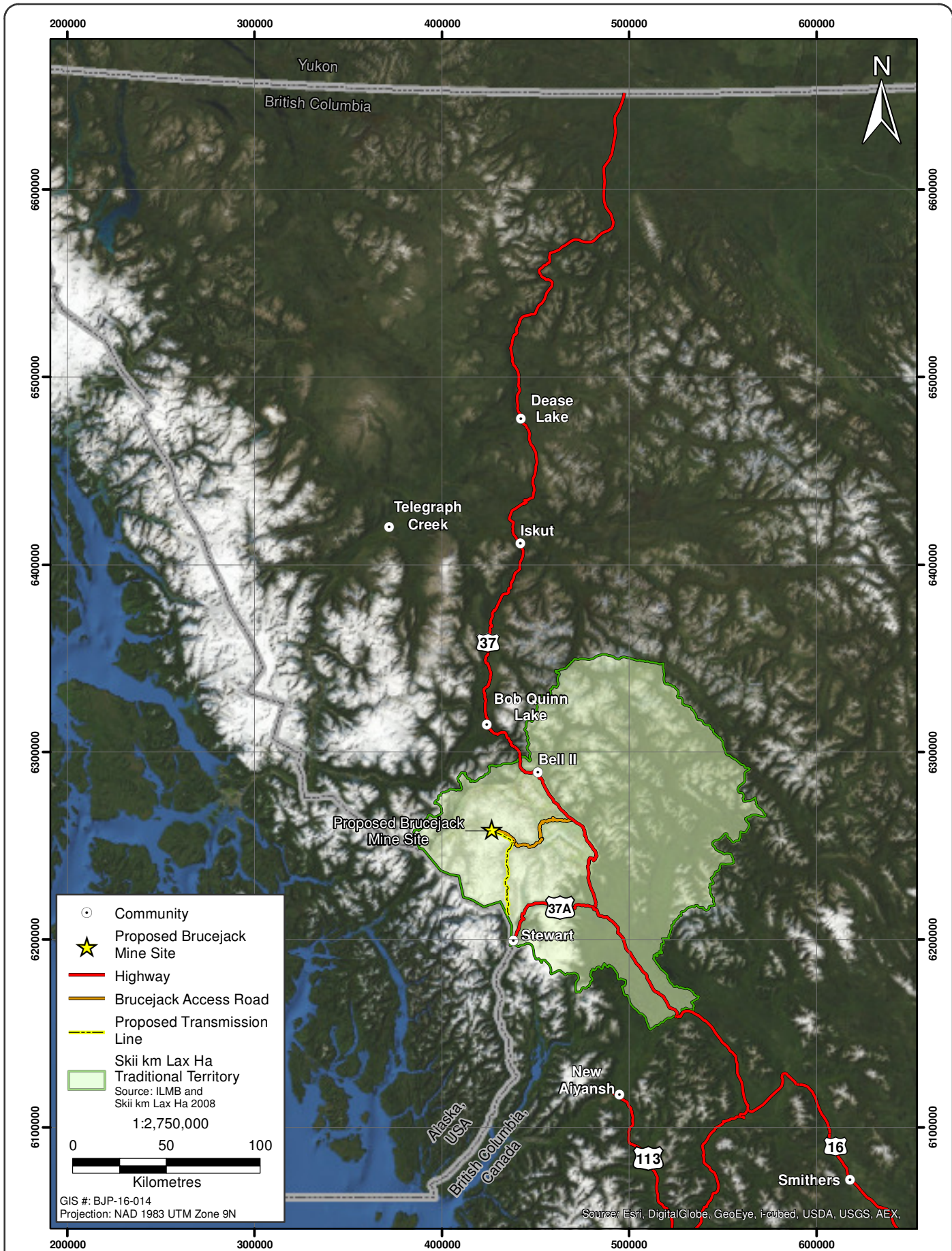
The Environmental Impact Statement (EIS) Guidelines released by the Canadian Environmental Assessment Agency (CEA Agency) on May 24, 2013 for the Project reiterate that the *Canadian Environmental Assessment Act* (CEAA, 2012) contain provisions for communication and cooperation with Métis; specifically, the Guidelines direct Pretivm to make key EA summary documents available to the Métis Nation BC and ensure this group's views are heard and recorded. The term "Aboriginal" is used throughout the Plan to be inclusive of First Nations, including any huwilp and Treaty Nations, and Métis.

The Plan outlines Pretivm's approach to Aboriginal engagement in the pre-Application stage and proposes a plan for Aboriginal engagement during the Application review stage of the EA including information distribution and seeking, considering, and addressing feedback on the Project. Engagement activities will also include: seeking information on potentially affected Aboriginal and Nisga'a interests, and Nisga'a rights as defined by the Nisga'a Final Agreement (NFA); issues tracking; and reporting. It is assumed that the BC EAO will post the Plan, on the Project Information Centre (e-PIC) Brucejack Gold Mine Project page<sup>1</sup>, in addition to subsequent Aboriginal consultation reports. Pretivm is also required to consult with government agencies, local government, and the public with respect to the potential effects of the proposed Project. A separate Public Consultation Plan has been developed and submitted to the BC EAO.

The Plan briefly describes the Project (Section 2); outlines the underlying principles and the objectives of Pretivm's Aboriginal engagement program (Section 3); describes the proposed plan for Aboriginal engagement during the pre-Application and Application review stages (Section 4), and the proposed plan for Nisga'a Nation engagement during the pre-Application and Application review stages (Section 5). While this plan outlines a framework for, and key components of, an effective Aboriginal and Nisga'a Nation engagement program, the nature of engagement necessitates that the plan be adaptable to Aboriginal and Nisga'a interests and needs that may become apparent as the engagement process develops.

---

<sup>1</sup> [http://a100.gov.bc.ca/appsdata/epic/html/deploy/epic\\_project\\_home\\_395.html](http://a100.gov.bc.ca/appsdata/epic/html/deploy/epic_project_home_395.html)



- Community
- ★ Proposed Brucejack Mine Site
- Highway
- Brucejack Access Road
- - - Proposed Transmission Line
- Skii km Lax Ha Traditional Territory  
Source: ILMB and Skii km Lax Ha 2008

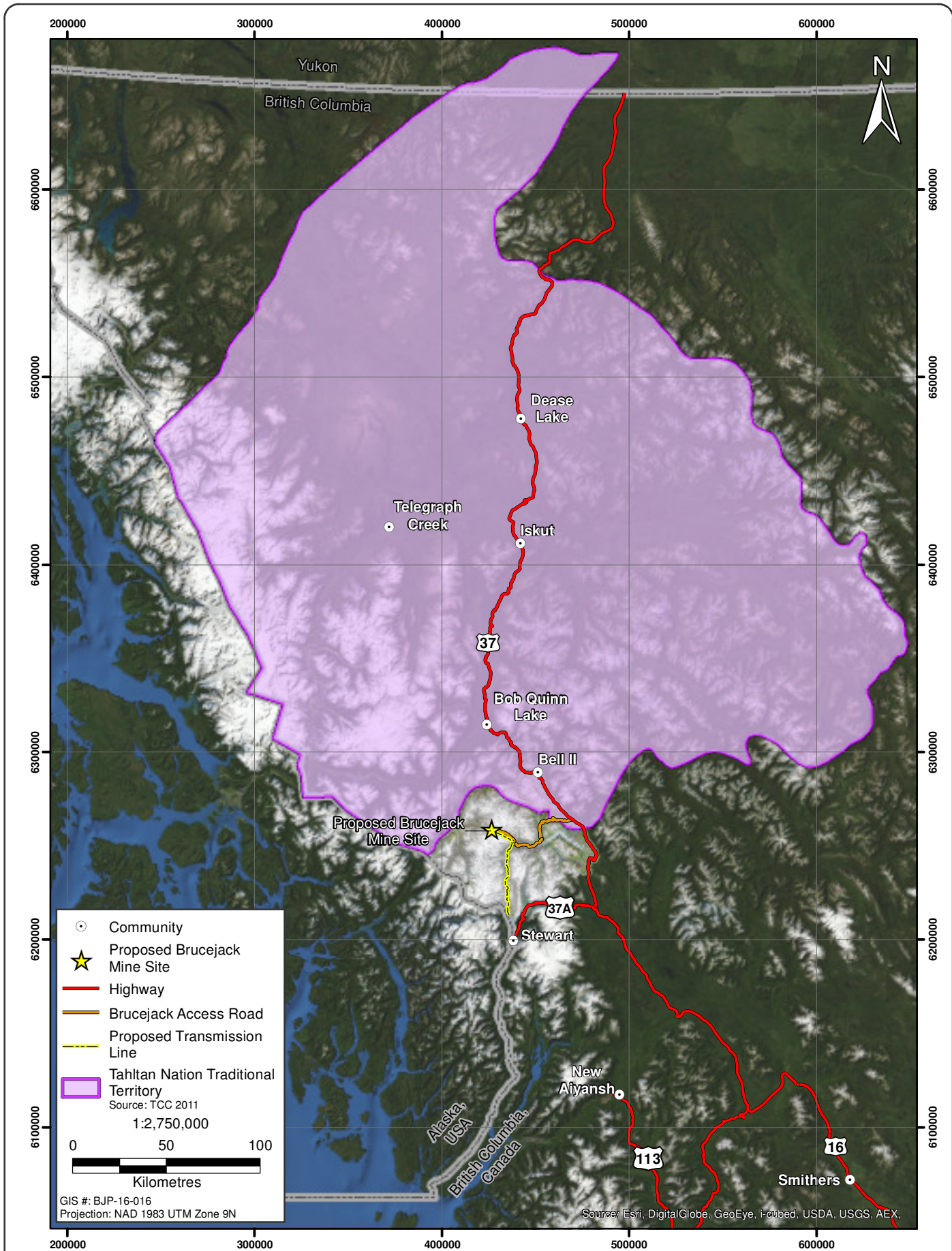
1:2,750,000

0 50 100  
Kilometres

GIS #: BJP-16-014  
Projection: NAD 1983 UTM Zone 9N

Source: Esri, DigitalGlobe, GeoEye, Earthstar, USDA, USGS, AEX.

Figure 1-1



- Community
- ★ Proposed Brucejack Mine Site
- Highway
- Brucejack Access Road
- Proposed Transmission Line
- ▭ Tahltan Nation Traditional Territory  
Source: TCC 2011

1:2,750,000

0 50 100  
Kilometres

GIS #: BJP-16-016  
Projection: NAD 1983 UTM Zone 9N

Source: Esri, DigitalGlobe, GeoEye, Earthstar, USDA, USGS, AEX.

Figure 1-2

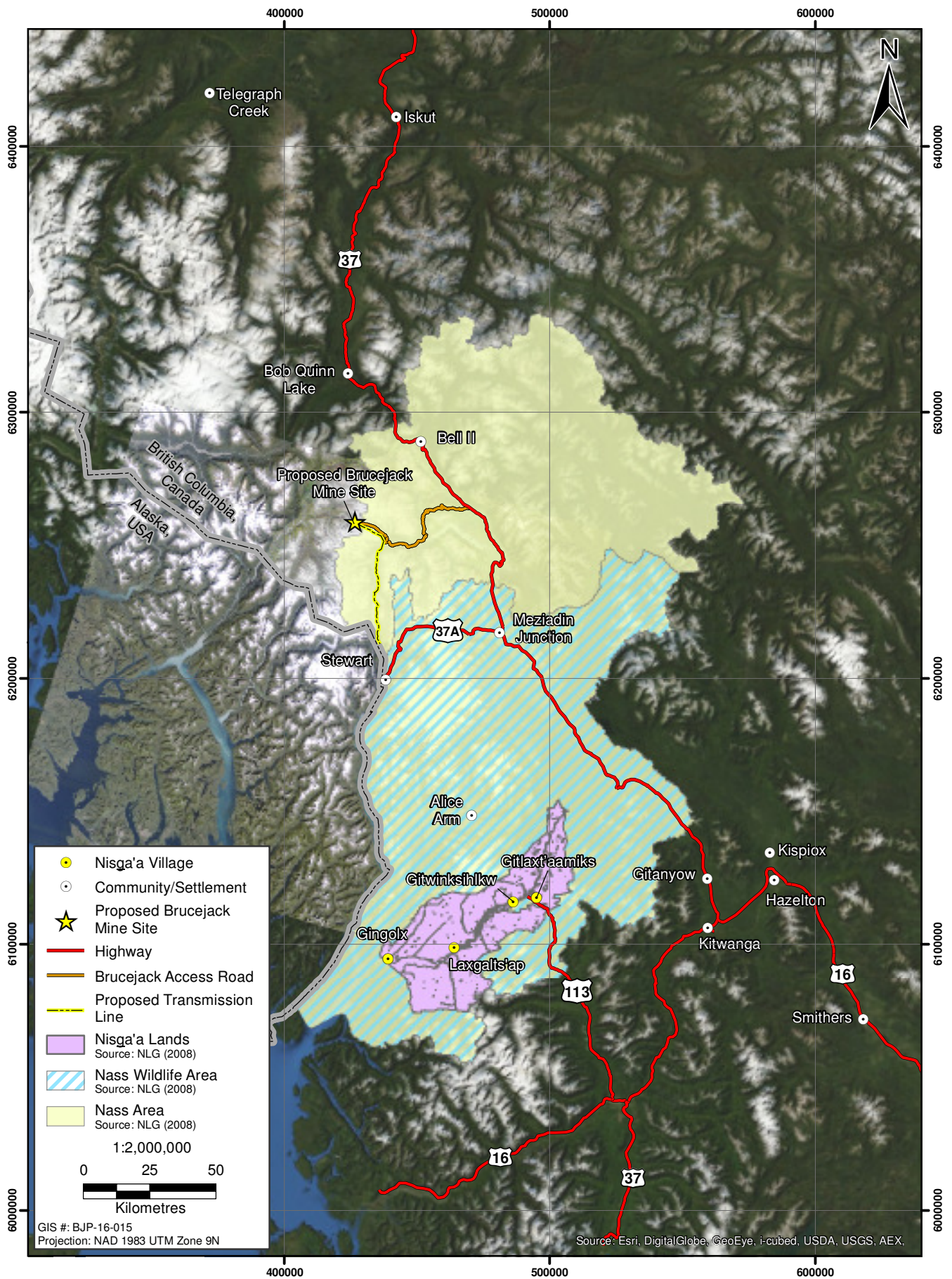


Figure 1-3

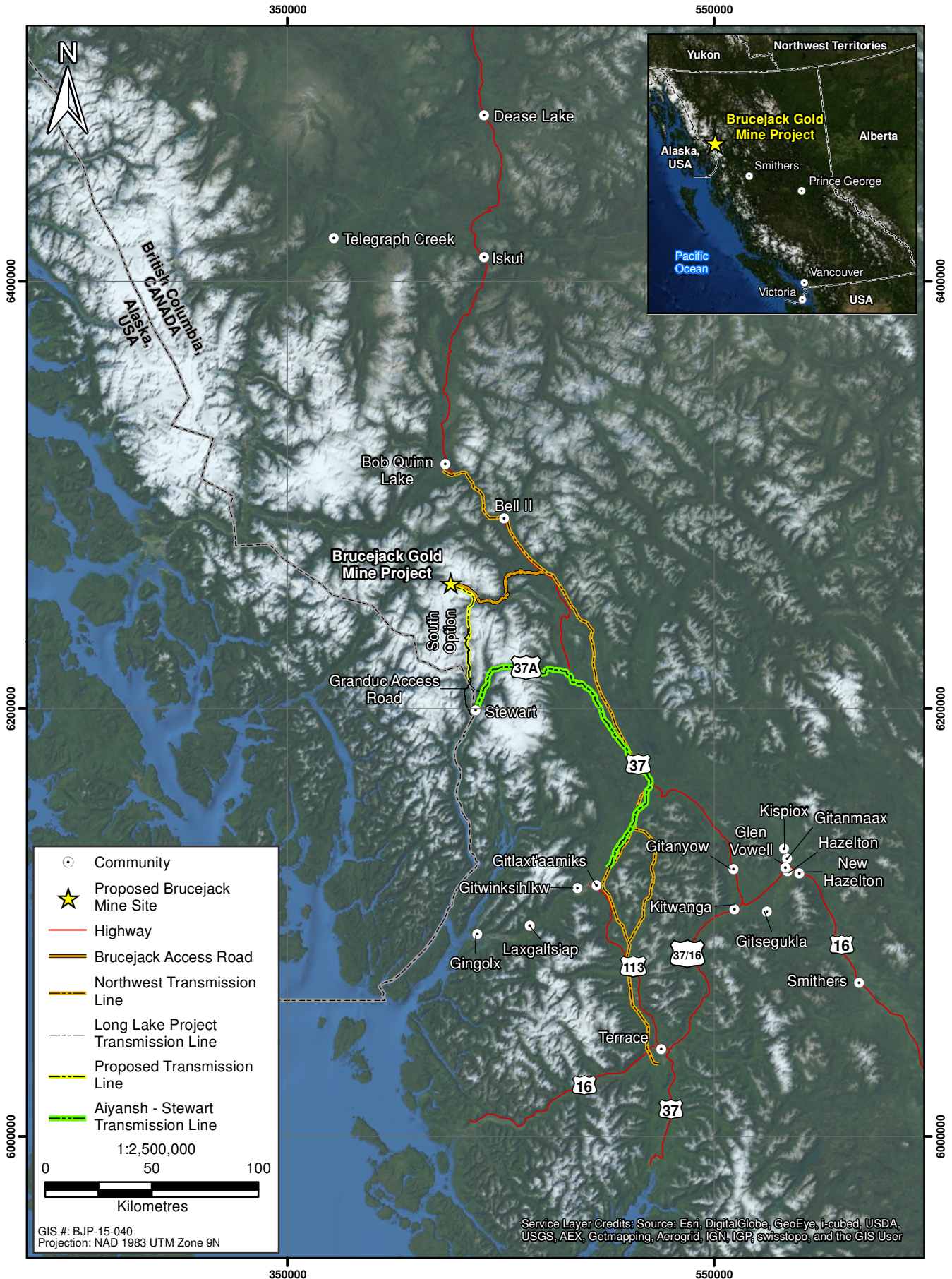


Figure 1-4

## 2. Brucejack Gold Mine Project Overview

## 2. Brucejack Gold Mine Project Overview

---

Pretium proposes to develop an underground gold and silver mining operation. Over a 22-year mine life, the mine will produce approximately 19 Mt of ore at a rate of 2,700 tonnes per day. The Brucejack property is located at 56°28'20" N latitude by 130°11'31" W longitude, which is approximately 950 km northwest of Vancouver, 65 km north-northwest of Stewart, and 21 km south-southeast of the closed Eskay Creek Mine (Figure 2-1). The Project is located within the Kitimat-Stikine Regional District.

The mine site area will be located near Brucejack Lake. The Project will be accessed by a 75 km road connecting with Highway 37 about 30 km south of Bell II. This road may require upgrading to support mine traffic. The road will be used year-round to mobilize personnel, equipment and supplies to the mine site and to truck concentrate from the mine site to the port in Stewart for shipment overseas or to rail facilities along the Highway 16 corridor. A transmission line will connect the mine site to the provincial power grid near Stewart.

The general area of the Brucejack Property has been the target of mineral exploration since the 1960s. In the 1980s Newhawk Gold Mines Ltd. conducted advanced exploration activities at the current site of the proposed Brucejack mine site that included 5 km of underground development, construction of an access road along the Bowser River and Knipple Glacier, and resulted in the deposition of 60,000 m<sup>3</sup> of waste rock within Brucejack Lake.

The Project is expected to provide positive economic benefits to local communities as a result of direct training and employment opportunities (at higher wage levels) generated by the Project; the Project will support an estimated 500 person-years of employment during construction, and at least 4,800 person-years of employment during operations. Indirect employment opportunities (e.g., goods and services contract providers to the mining industry) will also increase, creating positive spin-off effects in the local, regional, and provincial economies. The Project will also generate annual revenues (e.g. property tax, licensing fees, royalties, and income tax) for local, provincial, and federal governments.

Environmental baseline data was collected from Brucejack Lake and the surrounding vicinity in the 1980s to support a Stage I Impact Assessment for the Sulphurets Project proposed by Newhawk Gold Mines Ltd. Silver Standard Resources Inc. commenced recent environmental baseline studies specific to the currently proposed Project in 2009 which have been continued by Pretium, following its acquisition of the Project in 2010. Environmental and socio-economic baseline programs are currently underway.



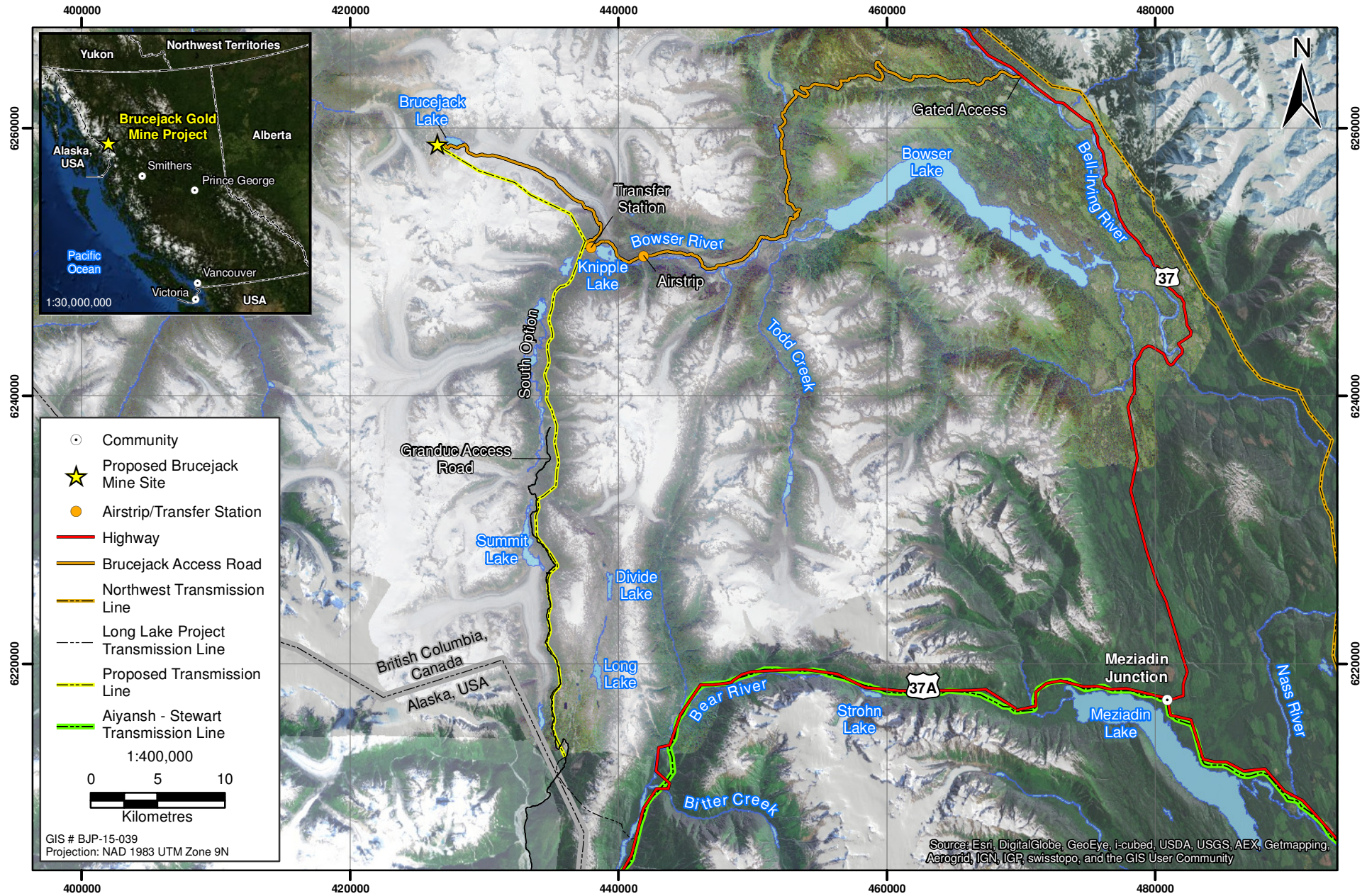


Figure 2-1

Figure 2-1

### 3. Aboriginal Engagement Principles and Objectives

### **3. Aboriginal Engagement Principles and Objectives**

---

Pretium is responsible for ensuring that the Application/EIS contains the appropriate level of information to assess the potential effects of the proposed Project on Aboriginal and Nisga'a interests and Nisga'a treaty rights as defined in the NFA. Pretium will engage with Skii km Lax Ha, Tahltan Nation and Nisga'a Nation, to identify potentially affected Aboriginal interests and Nisga'a rights and interests under the NFA raised by Aboriginal groups and Nisga'a Nation to identify measures to avoid or mitigate such potential adverse effects and/or to otherwise address or accommodate the concerns of Aboriginal groups as practicable.

Pretium's engagement with Aboriginal groups and Nisga'a Nation is guided by the following principles:

- distributing Project information and providing engagement opportunities in a timely manner;
- providing readily accessible and understandable information;
- providing sufficient time to review Project documents;
- consideration of and, wherever practicable, incorporation of feedback received by Aboriginal groups and Nisga'a Nation into the Application; Project design; and construction, operation, and closure and reclamation phases of the Project; and
- fostering long-term relationships and establishing a positive community presence.

Pretium acknowledges that circumstances may arise where information provided by Aboriginal groups must be kept confidential and is willing to address confidentiality issues where they arise.

## 4. Engagement with Aboriginal Groups

## 4. Engagement with Aboriginal Groups

### 4.1 TRADITIONAL TERRITORIES NEAR THE PROJECT

The Brucejack Access Road runs east-west through Skii km Lax Ha's traditional territory (Figure 1-1). The eastern most segment, approximately the first 9 km of road branching off to the west of Highway 37, is within Tahltan Nation traditional territory (Figure 1-2). The Brucejack Access Road will be used to transport personnel, equipment and concentrate. The mine infrastructure, adjacent to Brucejack Lake, falls within Skii km Lax Ha traditional territory. The proposed transmission line from the Project to Long Lake Hydroelectric Project, which is currently under construction near Stewart, passes north-south through Skii km Lax Ha traditional territory.

### 4.2 ABORIGINAL ENGAGEMENT UNDERTAKEN TO DATE

#### 4.2.1 Engagement Activities

Pretium initiated engagement with Skii km Lax Ha, Tahltan Nation, Gitksan Nation and Gitanyow Nation when it met with each of them in November 2011 to introduce the Project, and to discuss the exploration program, road construction, the conceptual development plan, and the project description. Pretium held subsequent meetings with each of these Aboriginal groups to provide updated information about the Project (Table 4.2-1). Additionally, Pretium arranged site tours for representatives of Skii km Lax Ha, Gitksan Nation and Gitanyow Nation in August 2012. Tahltan Nation were also invited to a site tour in 2012, but were not able to participate at that time. Pretium will continue to engage with Skii km Lax Ha, and Tahltan Nation as described in Sections 4.3 and 4.4.

**Table 4.2-1. Pretium's Engagement with Skii km Lax Ha and Tahltan Nation, until July 31, 2013**

Date	Communication Method	Group/Individual	Topics
<i>Skii km Lax Ha</i>			
November 14, 2011	Meeting (Terrace)	Skii km Lax Ha	<ul style="list-style-type: none"> <li>Project update including exploration program, exploration road construction, conceptual development plan, training programs.</li> </ul>
January 25, 2012	Site Tour	Skii km Lax Ha	<ul style="list-style-type: none"> <li>Underground mine tour.</li> </ul>
January 23, 2012	Email	Skii km Lax Ha	<ul style="list-style-type: none"> <li>Transmitted copy of the Notice of Work for an underground development, drilling and bulk sample program and the MEND Sulphurets Mine Project Report.</li> </ul>
January 24, 2012	Meeting (Vancouver)	Skii km Lax Ha	<ul style="list-style-type: none"> <li>Project update including exploration program, exploration road construction, conceptual development plan, training programs.</li> </ul>

(continued)

**Table 4.2-1. Pretivm’s Engagement with Skii km Lax Ha and Tahltan Nation, until July 31, 2013 (completed)**

Date	Communication Method	Group/Individual	Topics
<i>Skii km Lax Ha (cont’d)</i>			
February 2, 2012	Phone	Skii km Lax Ha	<ul style="list-style-type: none"> <li>Initiation of a TK/TU study.</li> </ul>
February 23, 2012	Email	Skii km Lax Ha	<ul style="list-style-type: none"> <li>Advised PVG PEA and Technical report completed and available online.</li> <li>Request to meet in March or April.</li> </ul>
August 15, 2012	Site Tour	Skii km Lax Ha	<ul style="list-style-type: none"> <li>Site tour of the Project.</li> </ul>
October 25, 2012	Meeting (Vancouver)	SKii km Lax Ha	<ul style="list-style-type: none"> <li>Project Description.</li> <li>EA timelines and process.</li> <li>TK data collection.</li> </ul>
May 1, 2013	Appointment	Skii km Lax Ha	<ul style="list-style-type: none"> <li>Pretivm retained Skii km Lax Ha representative as Mine Manager for Brucejack Access Road.</li> </ul>
<i>Tahltan Nation</i>			
November 23, 2011	Meeting (Vancouver)	TCC	<ul style="list-style-type: none"> <li>Project introduction including exploration program, exploration road construction, conceptual development plan.</li> </ul>
May 15, 2012	Meeting (Vancouver)	Tahltan Nation Development Corporation (TNDC)	<ul style="list-style-type: none"> <li>Exploration road and project construction.</li> </ul>
May 24, 2012	Meeting (Burns Lake)	TNDC	<ul style="list-style-type: none"> <li>Exploration road and project construction.</li> </ul>
June 11, 2012	Meeting (Vancouver)	TNDC	<ul style="list-style-type: none"> <li>Exploration road construction.</li> </ul>
October 25, 2012	Meeting (Vancouver)	TCC and TNDC	<ul style="list-style-type: none"> <li>Project Description.</li> </ul>

**4.2.2 Traditional Knowledge/Traditional Use Studies**

Pretivm is currently working with Skii km Lax Ha to complete a Traditional Knowledge/Traditional Use (TK/TU) study. Pretivm has made several attempts to contact the Tahltan Nation to discuss requirements for a Tahltan Nation TK/TU study for the project, but has not been successful at making contact. Pretivm will continue to communicate with Tahltan Nation regarding the requirements for and scope of a Tahltan TK/TU study for the Project.

**4.2.3 Project Agreements and Aboriginal Economic Participation**

Pretivm will seek to enter into Project agreements with potentially affected Aboriginal groups to provide economic and other benefits associated with the Project. Pretivm will work with each affected Aboriginal group to determine the best approach to providing them with long-term benefits that reflect their particular circumstances.

### 4.3 PRE-APPLICATION STAGE

The purpose of Pretivm's engagement with Skii km Lax Ha and Tahltan Nation during the Pre-Application review stage is to share Project information and identify the potential adverse effects of the proposed Project on their Aboriginal interests. Pretivm will consider information about potentially affected Aboriginal interests in the development of measures to avoid, mitigate, or otherwise address the impacts, as practicable, including changes to the proposed Project design or any other mitigation measures.

The BC EAO and CEA Agency will establish a Working Group for the Project and will invite Skii km Lax Ha, Tahltan Nation, NLG, and federal and provincial government agency representatives and local governments to participate on the Working Group. The Working Group is the main forum to discuss the Project. Pretivm will consult with Working Group members on an individual basis, and collectively through the Working Group when requested by the BC EAO. When invited, Pretivm will attend Working Group meetings to:

- provide information on the Project, including Project components and activities during construction and operations;
- present the results of environmental and socio-economic baseline studies, and discuss proposed mitigation measures;
- present and seek comments on the draft AIR; and
- respond to comments from Working Group members.

In accordance with the requirements of sections 14 and 17 of the draft Section 11 Order, Pretivm will undertake the following activities during the pre-Application stage:

- provide a draft of the Plan to Skii km Lax Ha and Tahltan Nation for review and discussion, and incorporate feedback received from these groups into the final Aboriginal Consultation Plan to be distributed to Skii km Lax Ha, Tahltan Nation, and BC EAO and CEA Agency;
- consider and provide written responses to comments received from Aboriginal groups within the timeframe specified by the BC EAO, including comments on the draft AIR and Application/EIS screening responses;
- incorporate input and comments received from Aboriginal groups into the draft AIR;
- by mutual agreement, hold discussions with Aboriginal groups to discuss potential effects of the proposed Project on Aboriginal interests and proposals to avoid, mitigate, or otherwise address the effects as appropriate;
- conduct, review and/or support TK/TU studies, as appropriate for each Aboriginal group;
- within the time limits set by the BC EAO, notify Aboriginal groups about the public comment period;
- identify, compile, track, and, where possible, address issues raised by Aboriginal groups during engagement activities;
- develop a process for the resolution of outstanding issues;
- within time limits set by the BC EAO (Section 17.3 of the Section 11 Order) prepare Aboriginal Consultation Reports that summarize engagement to date with Aboriginal groups including feedback and information received from Aboriginal groups; identification of potential adverse impacts of the proposed Project on Aboriginal interests and proposals to avoid, mitigate, or otherwise address the impacts as appropriate; and discussion of next steps/future engagement activities if different from those outlined in the Plan;

## ABORIGINAL CONSULTATION PLAN

- provide a draft of all Aboriginal Consultation Reports to the Skii km Lax Ha and Tahltan Nation for review and discussion, and incorporate feedback received from these groups into all final Aboriginal Consultation Reports to be distributed to Skii km Lax Ha, Tahltan Nation, BC EAO and CEA Agency;
- consider other means of engagement brought forward by Aboriginal groups, if applicable; and
- undertake further engagement with Aboriginal groups as directed by the BC EAO.

Information distribution materials will be developed for use during this stage (e.g. information handouts, posters, etc.) and are outlined in the Public Consultation Plan submitted to the BC EAO.

### 4.4 APPLICATION REVIEW STAGE

Once the Application/EIS is accepted for formal review, the 180-day review will be initiated which will include a comment period for the Working Group as determined by the BC EAO. The BC EAO will also establish a 30-day public comment period. During the Application review stage, Pretivm will:

- provide copies of the Application/EIS to the Skii km Lax Ha and Tahltan Nation for review and comment;
- within the time limits set by the BC EAO, notify Aboriginal communities about the public comment period;
- provide written responses to comments received from Aboriginal groups on the Application/EIS within the timeframe specified by the BC EAO;
- attend Working Group meetings organized by the BC EAO and CEA Agency to provide information related to the Application/EIS and respond to questions on the Application;
- by mutual agreement, hold discussions with Aboriginal groups to discuss potential effects of the proposed Project on Aboriginal interests and proposals to avoid, mitigate, or otherwise address the effects as appropriate;
- review and consider Aboriginal groups' comments during the Application/EIS review stage;
- compile, track, and, where possible, address issues raised by Aboriginal groups during engagement activities, including attempting to resolve any outstanding issues;
- within time limits set by the BC EAO (Section 17.3 of the Order) prepare an Aboriginal Consultation Report that summarizes engagement to date with Aboriginal groups including feedback and information received from Aboriginal groups; identifies potential adverse impacts of the proposed Project on Aboriginal interests and proposals to avoid, mitigate, or otherwise address the impacts as appropriate; and discuss next steps/future engagement activities if different from those outlined in the Plan;
- provide drafts of the Aboriginal Consultation Reports to the Skii km Lax Ha and Tahltan Nation for review and discussion, and incorporate feedback received from the Aboriginal groups into the final Aboriginal Consultation Reports to be distributed to the Skii km Lax Ha, Tahltan Nation, BC EAO, and CEA Agency;
- consider other means of engagement brought forward by Aboriginal groups, if applicable; and
- undertake further engagement with by Aboriginal groups as directed by the BC EAO.

Information distribution materials will be developed for use (e.g. information handouts, posters, etc.) during this stage and are outlined in the Public Consultation Plan submitted to the BC EAO.



## 5. Engagement with Nisga'a Nation

## 5. Engagement with Nisga'a Nation

---

### 5.1 NISGA'A FINAL AGREEMENT

The primary mine site, including underground development, mine site operations camp, and processing facility will be located just outside of the western edge of the Nass Area, adjacent to Brucejack Lake (Figure 1-3). Several ancillary components of the Project will be located within the Nass Area, including the majority of the access road, transmission line, aerodrome, and transfer station. The Brucejack Access Road, which connects the Project with Highway 37 about 30 km south of Bell II, runs east-west through the western portion of the Nass Area, as defined by the NFA. The Brucejack Access Road will be used to transport personnel, equipment and concentrate. The proposed transmission line from the Project to Long Lake Hydroelectric Project, which is currently under construction near Stewart, passes north-south through the Nass Area.

Accordingly, British Columbia and Canada, in undertaking the EA of the Project, are required to comply with Chapter 10 of the NFA. Provisions of Chapter 10 applicable to the conduct of the EA are:

*6. If a proposed project that will be located off Nisga'a Lands may reasonably be expected to have adverse environmental effects on residents of Nisga'a Lands, Nisga'a Lands or Nisga'a interests set out in this Agreement, Canada or British Columbia, or both, as the case may be, will ensure that the Nisga'a Nation:*

- a. receives timely notice of, and relevant available information on, the project and the potential adverse environmental effects;*
- b. is consulted regarding the environmental effects of the project; and*
- c. receives an opportunity to participate in any environmental assessment under federal or provincial laws related to those effects, in accordance with those laws, if there may be significant adverse environmental effects.*

*8. All environmental assessment processes referred to in this Agreement will, in addition to the requirements of applicable environmental assessment legislation:*

- e. assess whether the project can reasonably be expected to have adverse environmental effects on residents of Nisga'a Lands, Nisga'a Lands, or Nisga'a interests set out in this Agreement and, where appropriate, make recommendations to prevent or mitigate those effects;*
- f. assess the effects of the project on the existing and future economic, social and cultural well-being of Nisga'a citizens who may be affected by the project;*
- i. take into account any agreements between the project proponent and the Nisga'a Nation or a Nisga'a Village concerning the effects of the project.*

*10. In exercising decision-making authority for projects that may have adverse environmental effects on residents of Nisga'a Lands, Nisga'a Lands or Nisga'a interests set out in this Agreement, the decision maker will take into account, but will not be bound by, any agreement between the Nisga'a Nation or a Nisga'a Village and the project proponent concerning the project (NLG, Province of British Columbia, Government of Canada 1998).*

## 5.2 NISGA’A NATION ENGAGEMENT UNDERTAKEN TO DATE

### 5.2.1 Engagement Activities

Pretivm initiated engagement with NLG in February 2011 when it advised NLG of the transfer of mineral claims and proposed exploration road to Pretivm and has held subsequent meetings since then (Table 5.2-1). NLG were also invited to a site tour in 2012, but were not able to participate at that time. Pretivm has initiated discussions with NLG around the implementation of a Nisga’a Economic, Social, Cultural Impact Assessment (ESCIA) based on NLG Guidelines issued to the BC EAO and CEA Agency in November 2010. Pretivm will continue to engage with Nisga’a Nation as described in Sections 5.3 and 5.4.

**Table 5.2-1. Pretivm’s Engagement with Nisga’a Nation, until July 31, 2013**

Date	Communication Method	Group/Individual	Topics
February 3, 2011	Letter	NLG (Fred Tolmie, CEO)	<ul style="list-style-type: none"> <li>Transfer of mineral claims and proposed exploration road.</li> </ul>
April 1, 2011	Letter	NLG	<ul style="list-style-type: none"> <li>Mailed copies of: exploration road Access Plan with Wildlife Habitat Value Assessment and Protection Plan, preliminary designs for Bell Irving and Wildfire Bridges, and spatial data (shape files) as per request from NLG.</li> </ul>
November 8, 2011	Meeting (Vancouver)	NLG (Executive Committee)	<ul style="list-style-type: none"> <li>Project update: exploration program, exploration road construction, conceptual development plan.</li> </ul>
April 4, 2012	Meeting (Vancouver)	NLG (Executive Committee)	<ul style="list-style-type: none"> <li>Project update: exploration program, exploration road construction, conceptual development plan.</li> </ul>
November 30, 2012	Meeting (Vancouver)	NLG (Fred Tolmie, CEO)	<ul style="list-style-type: none"> <li>Project Description.</li> </ul>
February 19, 2013	Meeting (Gitlaxt’aamiks)	NLG (Executive Committee and Legal Counsel)	<ul style="list-style-type: none"> <li>Development plans.</li> <li>ESCIA.</li> </ul>
March 15, 2013	Meeting	Nass Area Enterprises	<ul style="list-style-type: none"> <li>Project presentation.</li> <li>Opportunities for Nass Area Enterprises to be involved in Project.</li> </ul>
May 30, 2013	Meeting	Nass Area Enterprises	<ul style="list-style-type: none"> <li>Project update.</li> <li>Economic/business opportunities.</li> <li>Arranged a site visit for June 2013.</li> </ul>
June 12, 2013	Meeting	Nass Area Enterprises	<ul style="list-style-type: none"> <li>Economic/business opportunities related to exploration road.</li> <li>Upcoming site visit.</li> </ul>
June 19, 2013	Site Tour	Nass Area Enterprises	<ul style="list-style-type: none"> <li>Toured the site.</li> </ul>

### 5.3 PRE-APPLICATION STAGE

The purpose of engagement with Nisga'a Nation during the pre-Application stage is to identify the potential adverse effects of the proposed Project on the rights and interests of Nisga'a Nation under the NFA. Pretivm will consider information about potentially affected Nisga'a rights and interests in the development of measures to avoid, mitigate, or otherwise address the impacts, as practicable, including changes to the proposed Project design or any other mitigation measures.

The BC EAO and CEA Agency will establish a Working Group for the Project and will invite NLG, Skii km Lax Ha, Tahltan Nation, and federal and provincial government agency representatives and local governments to participate on the Working Group. The Working Group is the main forum to discuss the Project. Pretivm will consult with Working Group members on an individual basis, and collectively through the Working Group when requested by the BC EAO. When invited, Pretivm will attend Working Group meetings to:

- provide information on the Project, including Project components and activities during construction and operations;
- present the results of environmental and socio-economic baseline studies, and discuss proposed mitigation measures;
- present and seek comments on the draft AIR; and
- respond to comments from Working Group members.

In accordance with sections 16 and 17 of the draft Section 11 Order, Pretivm will undertake the following activities during the pre-Application stage:

- provide a draft of the Plan to NLG for review and discussion, and incorporate feedback received from NLG into the final Aboriginal Consultation Plan to be distributed to NLG, BC EAO and CEA Agency;
- consider and provide written responses to comments received from NLG within the timeframe specified by the BC EAO, including comments on the draft AIR and Application/EIS screening responses;
- incorporate input and comments received from the NLG into the draft AIR;
- prepare an ESCIA based on NLG Guidelines issued to the BC EAO and CEA Agency in November 2010;
- by mutual agreement, hold discussions with NLG to discuss potential adverse impacts of the proposed Project on the rights and interests of the Nisga'a Nation under the NFA and proposals to avoid, mitigate, or otherwise address the e as appropriate;
- in discussion with NLG and BC EAO, host a community meeting in at least one of the Nisga'a villages;
- within the time limits set by the BC EAO, notify Nisga'a Nation about the public comment period;
- identify, compile, track, and, where possible, address issues raised by Nisga'a Nation during engagement activities;
- develop a process for the resolution of outstanding issues;
- within time limits set by the BC EAO (Section 17.3 of the Section 11 Order) prepare Aboriginal Consultation Reports that summarize engagement to date with Nisga'a Nation including feedback and information received from Nisga'a Nation; identification of potential adverse

impacts of the proposed Project on the rights and interests of the Nisga'a Nation under the NFA and proposals to avoid, mitigate, or otherwise address the impacts as appropriate; and discussion of next steps/future engagement activities if different from those outlined in the Plan;

- provide a draft of all Aboriginal Consultation Reports to NLG for review and discussion, and incorporate feedback received from the NLG into all final Aboriginal Consultation Reports to be distributed to NLG, BC EAO, and CEA Agency;
- within time limits set by the BC EAO, provide a summary report of any potential agreements reached with Nisga'a Nation or a Nisga'a Village within the meaning of paragraphs 8(i) and 10 of Chapter 10 of the NFA;
- consider other means of engagement brought forward by NLG, if applicable; and
- undertake further engagement with Nisga'a Nation as directed by the BC EAO.

Information distribution materials will be developed for use during this stage (e.g. information handouts, posters, etc.) and are outlined in the Public Consultation Plan submitted to the BC EAO.

### 5.4 APPLICATION REVIEW STAGE

Once the Application/EIS is accepted for formal review, the 180-day review will be initiated which will include a comment period for the Working Group as determined by the BC EAO. The BC EAO will also establish a 30-day public comment period. During the Application review stage, Pretivm will:

- provide copies of the Application/EIS to NLG for review and comment;
- within the time limits set by the BC EAO, notify Nisga'a communities about the public comment period;
- provide written responses to comments received from the NLG on the Application/EIS within the timeframe specified by the BC EAO;
- attend Working Group meetings organized by the BC EAO and CEA Agency to provide information related to the Application/EIS and respond to questions on the Application/EIS;
- by mutual agreement, hold discussions with NLG to discuss potential adverse effects of the proposed Project on the rights and interests of the Nisga'a Nation under the NFA and proposals to avoid, mitigate, or otherwise address the impacts as appropriate;
- in discussion with NLG and BC EAO, host a community meeting in at least one of the Nisga'a villages;
- review and consider Nisga'a Nation comments during the Application/EIS review stage;
- compile, track, and, where possible, address issues raised by Nisga'a Nation during engagement activities, including attempting to resolve any outstanding issues;
- within time limits set by the BC EAO (Section 17.3 of the Section 11 Order) prepare an Aboriginal Consultation Report that summarizes engagement to date with Nisga'a Nation including feedback and information received from Nisga'a Nation; identifies potential adverse impacts of the proposed Project on the rights and interests of Nisga'a Nation under the NFA and proposals to avoid, mitigate, or otherwise address the impacts as appropriate; and discuss next steps/future engagement activities if different from those outlined in the Plan;
- provide drafts of the Aboriginal Consultation Reports to NLG for review and discussion, and incorporate feedback received from NLG into the final Aboriginal Consultation Reports to be distributed to the NLG, BC EAO, and CEA Agency;

- within time limits set by the BC EAO, provide a summary report of any potential agreements reached with the Nisga'a Nation or a Nisga'a Village within the meaning of paragraphs 8(i) and 10 of Chapter 10 of the NFA;
- consider other means of engagement brought forward by NLG, if applicable; and
- undertake further engagement with Nisga'a Nation as directed by the BC EAO.

Information distribution materials will be developed for use during this stage (e.g. information handouts, posters, etc.) and are outlined in the Public Consultation Plan submitted to the BC EAO.

## 6. Key Contacts

## 6. Key Contacts

---

Comments or questions on this plan are welcome and may be directed to the following individuals:

Pretium Resources Inc.

**Joseph Ovsenek**, Chief Development Officer

Email: [jovsenek@pretivm.com](mailto:jovsenek@pretivm.com)

Phone: 604-566-8783

Suite 1600-570 Granville Street

Vancouver BC, V6C 3P1

Toll Free: 1-800-564-6253

Fax: 604-558-4784

Rescan, an ERM Company

**Greg Norton**, Project Manager

Email: [greg.norton@erm.com](mailto:greg.norton@erm.com)

**Anne Currie**, Project Director

Email: [anne.currie@erm.com](mailto:anne.currie@erm.com)

**Andrew Robinson**, Senior Socio-economic Scientist

Email: [andrew.robinson@erm.com](mailto:andrew.robinson@erm.com)

Sixth Floor, 1111 West Hastings Street

Vancouver, B.C. V6E 2J3

Tel: 604-689-9460 (Toll Free: 1-877-689-9460)

Fax: 604-687-4277



## References

## References

---

2012. *Canadian Environmental Assessment Act*, C. 19. s. 52.

2002. *British Columbia Environmental Assessment Act*, SBC. C. 43.