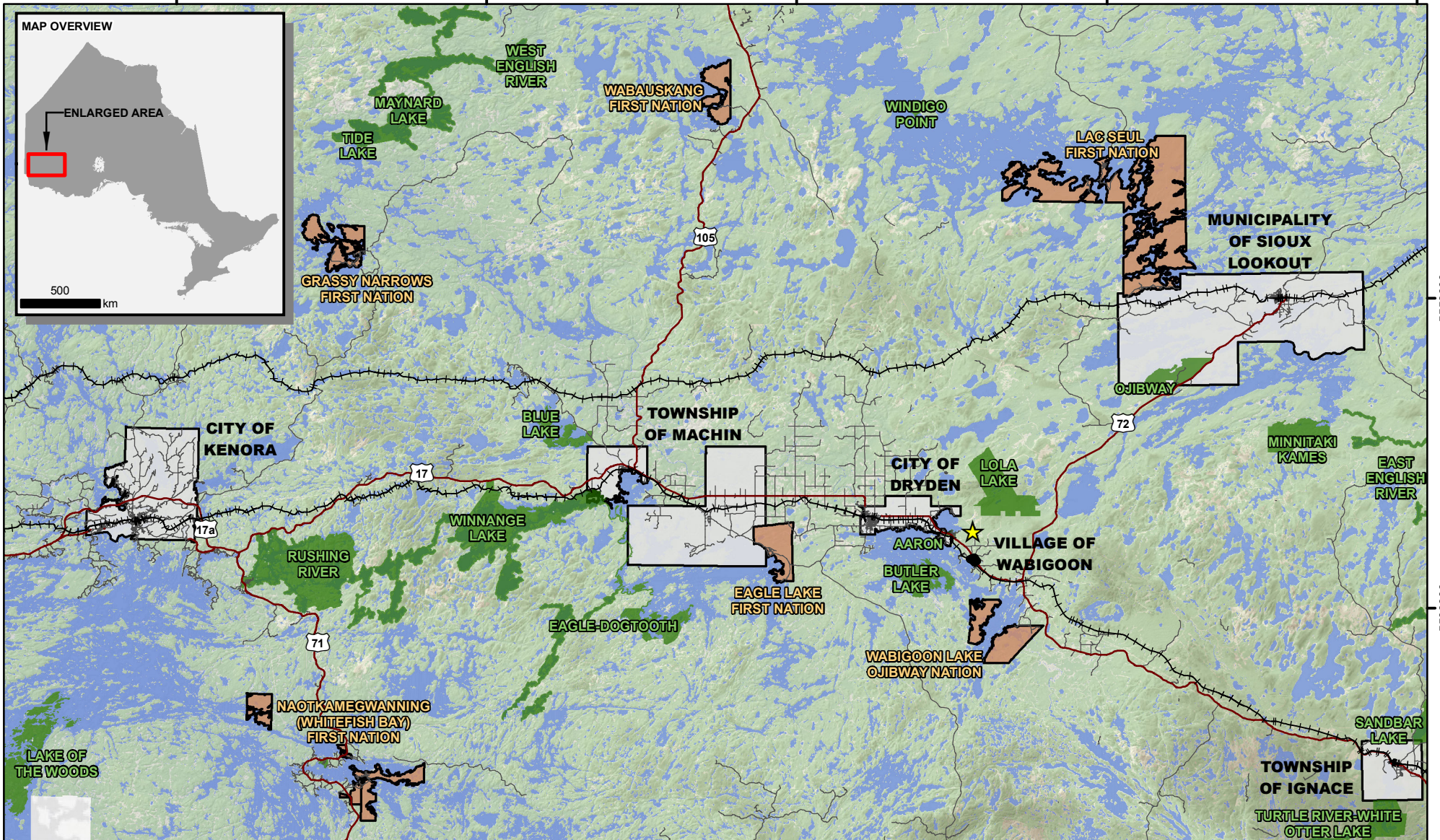
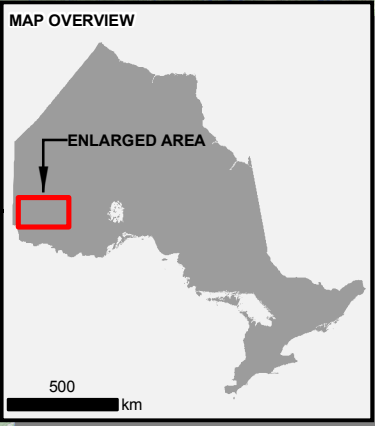


400000 450000 500000 550000 600000



5550000
5500000

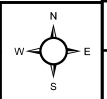
P:\2016\Projects\TC160516_Oleimore_Kidd_Closure-Phase2\09_GIS\TMA_Active_Tailings_Cover_Design\WXD\Study_Area_4.mxd

- LEGEND**
- ★ Project Location
 - Socio-economic Study Area
 - First Nation Reserves*
 - Communities*
 - Provincial Parks
 - ++++ Railway
 - Highway
 - Local Road
 - Waterbody

NOTES:
- Topographic data extracted from Land Information Ontario, MNRF.

* Only communities and reserves located within the study area are shown.

Datum: NAD83
Projection: UTM Zone 15N



GOLIATH GOLD PROJECT

Socio-economic Study Area

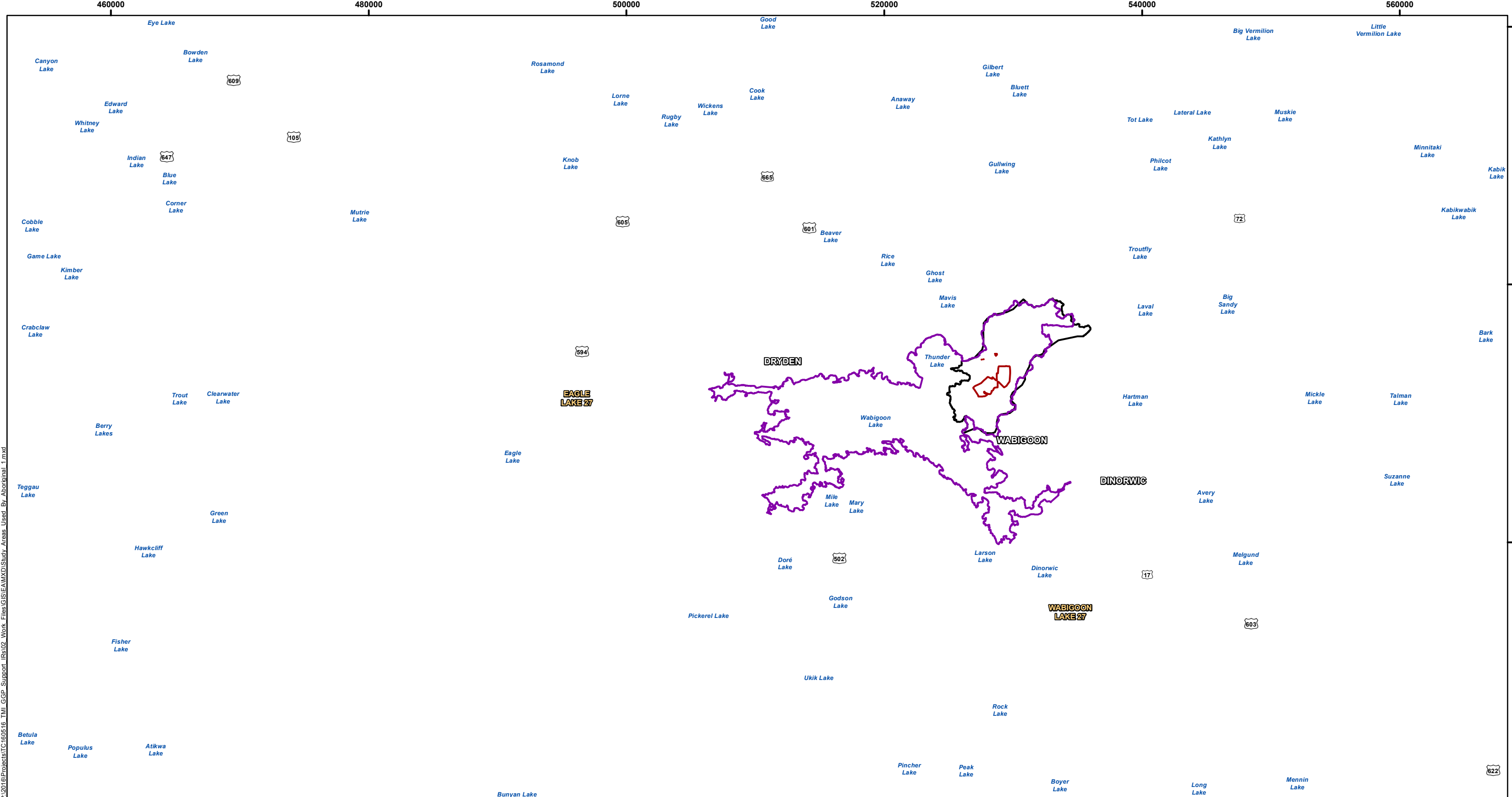
PROJECT N°: TC160516

FIGURE:6.1.4.17-1

SCALE: 1:880,000

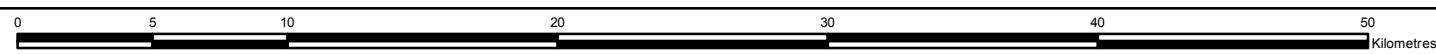
DATE: April 2018

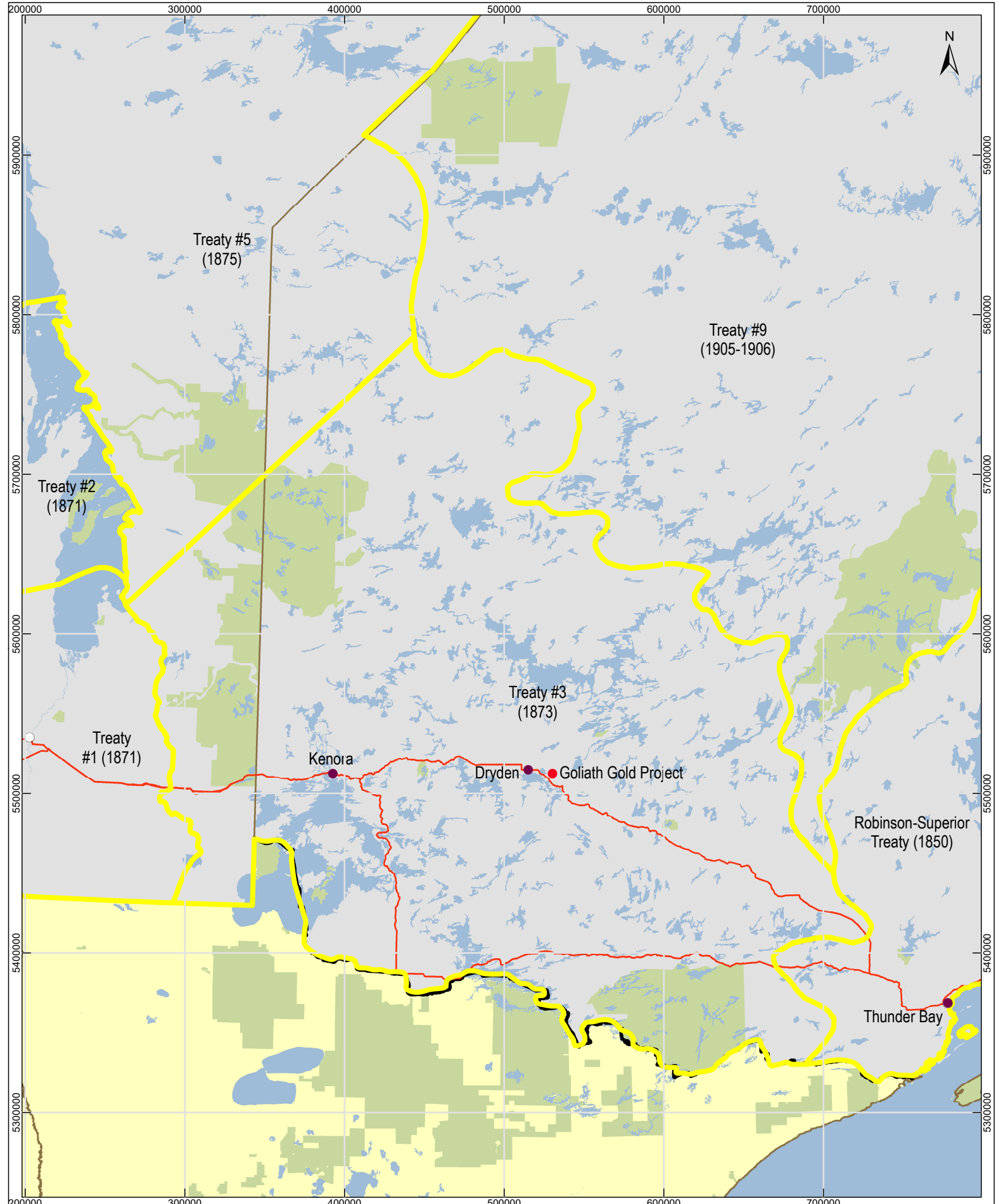




P:\2016\Projects\TC160516_TMI_GGP_Support_IRs\02_Work_Files\GIS\EA\MXD\Study_Areas_Used_By_Aboriginal_1.mxd

<p>LEGEND</p> <ul style="list-style-type: none"> Operations Area Terrestrial Local Study Area Terrestrial Regional Study Area Wildrice Local Study Area Aquatic Regional Study Area Aquatic Local Study Area First Nation Reserves Canadian Pacific Railway Highway Local Road 	<p>NOTES: - Topographic data extracted from Land Information Ontario, MNRF.</p>	<div style="background-color: black; width: 100px; height: 20px; margin: 0 auto;"></div> <p>GOLIATH GOLD PROJECT</p> <p>Study Areas Used for Aboriginal Peoples VCs</p>
	<p>Datum: NAD83 Projection: UTM Zone 15N</p>	





GOLIATH GOLD PROJECT
 DRYDEN, ONTARIO, CANADA

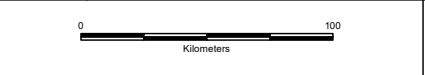


Treaty Areas - Regional Scale
 Figure 5.13.1-2

DESIGN: MP 18/08/2017
 GIS: MP 18/08/2017
 CHECK: MW 18/08/2017
 REVIEW: MW 18/08/2017

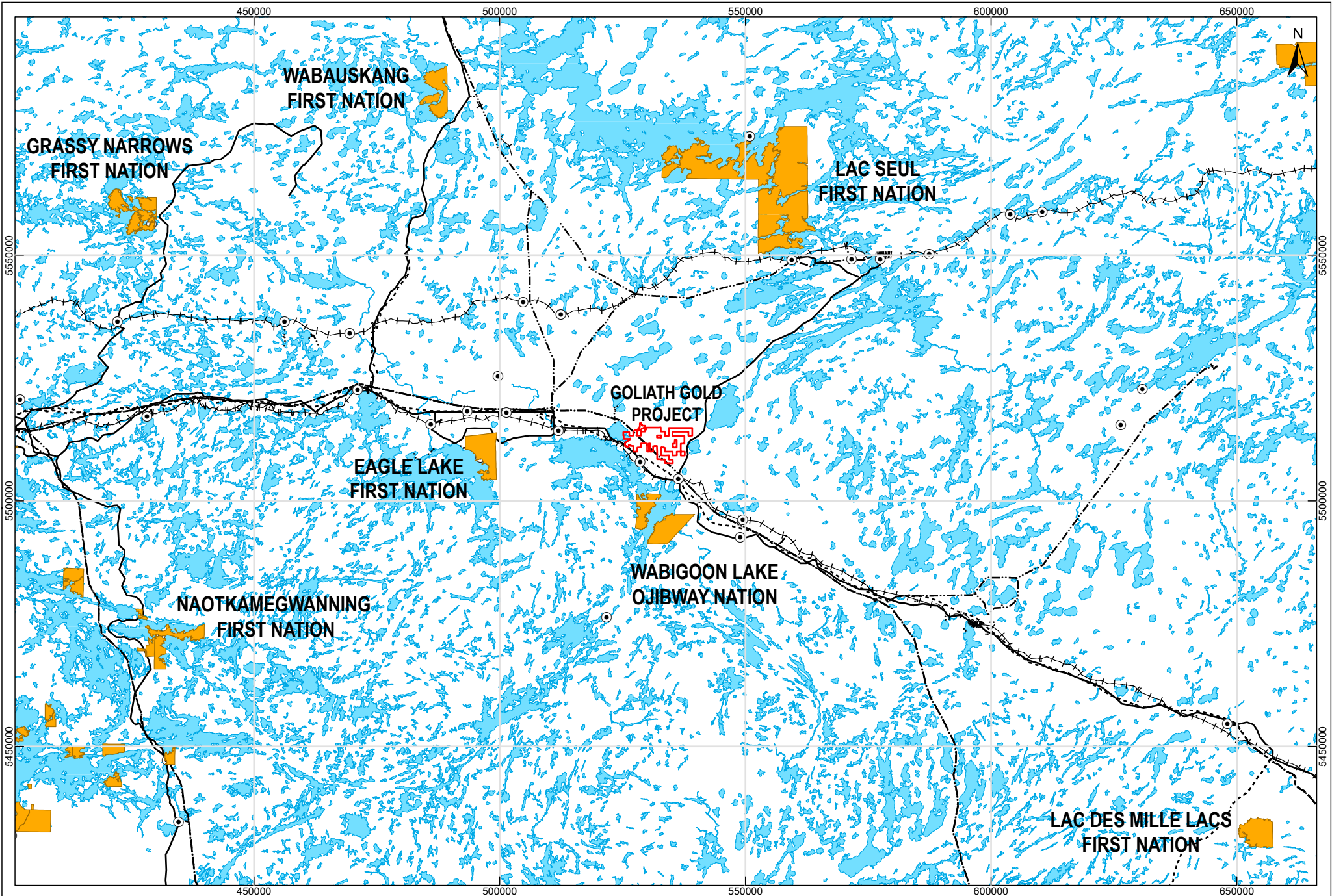
- Treaty Areas
- Canada
- United States
- Population Center
- Highways

SCALE 1:3,000,000
 Coordinate System: NAD 1983 UTM Zone 15N
 Projection: Transverse Mercator
 Datum: North American 1983



Base Data:
 Treasury Metals Inc., LIO Database,
 KBM Resources Group

Notes:
 All details preliminary and subject to
 change as engineering designs are
 updated.



GOLIATH GOLD PROJECT
 DRYDEN, ONTARIO, CANADA

Indigenous Communities

Figure 5.13.1-1

TREASURY
 METALS INC.

DESIGN: MP 18/08/2017
 GIS: MP 18/08/2017
 CHECK: MW 18/08/2017
 REVIEW: MW 18/08/2017

REV.02

Indigenous Communities	Hydro Line	Railway
Goliath Property Boundary	Natural Gas Pipeline	Highway
Populated Area	Waterbody	

SCALE 1:1,000,000

Coordinate System: NAD 1983 UTM Zone 15N
 Projection: Transverse Mercator
 Datum: North American 1983

0 20 40 60
 Kilometers

Base Data:
 Treasury Metals Inc., LIO Database,
 KBM Resources Group

Notes:
 All details preliminary and subject to
 change as engineering designs are
 updated.

Table 6.21.6-1 Aboriginal Peoples Residual Effects

Valued Component	Indicators	Measures	Predicted Aboriginal Residual Effects			
			Site Preparation and Construction	Operations	Closure	Post-Closure
Human Health	Risk Assessment for Indigenous Human Health	Potential risk relative to Health Canada risk benchmarks	<u>No residual effect:</u> No potential human health risks were identified via any of the exposure pathways as a result of the Project.	<u>No residual effect:</u> No potential human health risks were identified via any of the exposure pathways as a result of the Project.	<u>No residual effect:</u> No potential human health risks were identified via any of the exposure pathways as a result of the Project.	<u>No residual effect:</u> No potential human health risks were identified via any of the exposure pathways as a result of the Project.
Harvesting and Gathering of Plant Material	Wild Rice	Loss of wild rice areas	<u>No residual effect:</u> There will be no loss in wild rice area as a result of the Project.	<u>No residual effect:</u> There will be no loss in wild rice area as a result of the Project.	<u>No residual effect:</u> There will be no loss in wild rice area as a result of the Project.	<u>No residual effect:</u> There will be no loss in wild rice area as a result of the Project.
		Change in water quality	<u>No residual effect:</u> Water quality in the receiving environment will not exceed PWQO or background concentrations as a result of the Project.	<u>No residual effect:</u> Water quality in the receiving environment will not exceed PWQO or background concentrations as a result of the Project.	<u>No residual effect:</u> Water quality in the receiving environment will not exceed PWQO or background concentrations as a result of the Project.	<u>No residual effect:</u> Water quality in the receiving environment will not exceed PWQO or background concentrations as a result of the Project.
		Changes in water levels	<u>No residual effect:</u> There will be no measurable changes to water levels in Wabigoon Lake or Thunder Lake as a result of the Project.	<u>No residual effect:</u> There will be no measurable changes to water levels in Wabigoon Lake or Thunder Lake as a result of the Project.	<u>No residual effect:</u> There will be no measurable changes to water levels in Wabigoon Lake or Thunder Lake as a result of the Project.	<u>No residual effect:</u> There will be no measurable changes to water levels in Wabigoon Lake or Thunder Lake as a result of the Project.
		Quality for consumption	<u>No residual effect:</u> No residual effects via ingestion of country foods identified in human health risk assessment as a result of the Project.	<u>No residual effect:</u> No residual effects via ingestion of country foods identified in human health risk assessment as a result of the Project.	<u>No residual effect:</u> No residual effects via ingestion of country foods identified in human health risk assessment as a result of the Project.	<u>No residual effect:</u> No residual effects via ingestion of country foods identified in human health risk assessment as a result of the Project.
	Berry Harvesting	Loss of potential harvest areas	<u>Residual effect:</u> 260 ha of berry habitat loss. Constitutes 8.7% of	<u>Residual effect:</u> 260 ha of berry habitat loss. Constitutes 8.7% of	<u>Residual effect:</u> 260 ha of berry habitat loss. Constitutes 8.7% of	<u>Residual effect:</u> 168 ha of berry habitat loss in perpetuity due to the WRSA, open pit and

Valued Component	Indicators	Measures	Predicted Aboriginal Residual Effects			
			Site Preparation and Construction	Operations	Closure	Post-Closure
			the available berry habitat in the terrestrial LSA.	the available berry habitat in the terrestrial LSA.	the available berry habitat in the terrestrial LSA.	TSF. Constitutes 5.6% of the available berry habitat in the terrestrial LSA.
		Quality for consumption	<u>No residual effect:</u> No residual effects via ingestion of country foods identified in human health risk assessment as a result of the Project.	<u>No residual effect:</u> No residual effects via ingestion of country foods identified in human health risk assessment as a result of the Project.	<u>No residual effect:</u> No residual effects via ingestion of country foods identified in human health risk assessment as a result of the Project.	<u>No residual effect:</u> No residual effects via ingestion of country foods identified in human health risk assessment as a result of the Project.
	Medicinal Plant Harvesting	Loss of forest	<u>Residual effect:</u> 208 ha loss for potential medicinal plant harvesting. Constitutes 7.8% of forest habitat in the LSA.	<u>Residual effect:</u> 208 ha loss for potential medicinal plant harvesting. Constitutes 7.8% of forest habitat in the LSA.	<u>Residual effect:</u> 208 ha loss for potential medicinal plant harvesting. Constitutes 7.8% of forest habitat in the LSA.	<u>Residual effect:</u> 168 ha loss for potential medicinal plant harvesting in perpetuity due to the open pit, WRSA and TSF. Constitutes 6.3% of forest habitat in the LSA.
		Loss of wetland	<u>Residual effect:</u> 32.6 ha loss for potential medicinal plant harvesting. Constitutes 2.3% of wetland habitat in the LSA.	<u>Residual effect:</u> 47.0 ha loss for potential medicinal plant harvesting. Constitutes 3.2% of wetland habitat in the LSA.	<u>Residual effect:</u> 47.0 ha loss for potential medicinal plant harvesting. Constitutes 3.2% of wetland habitat in the LSA.	<u>Residual effect:</u> 47.0 ha loss for potential medicinal plant harvesting. Constitutes 3.2% of forest habitat in the LSA.
		Quality for consumption	<u>No residual effect:</u> No residual effects via ingestion of country foods identified in human health risk assessment as a result of the Project.	<u>No residual effect:</u> No residual effects via ingestion of country foods identified in human health risk assessment as a result of the Project.	<u>No residual effect:</u> No residual effects via ingestion of country foods identified in human health risk assessment as a result of the Project.	<u>No residual effect:</u> No residual effects via ingestion of country foods identified in human health risk assessment as a result of the Project.
	Changes in Access	Land where access is controlled	<u>Residual effect:</u> 379 ha where access will require a Treasury escort for safety and security reasons	<u>Residual effect:</u> 379 ha where access will require a Treasury escort for safety and security reasons	<u>Residual effect:</u> 379 ha where access will require a Treasury escort for safety and security reasons	<u>No residual effect:</u> No access restrictions in the post-closure phase.

Valued Component	Indicators	Measures	Predicted Aboriginal Residual Effects			
			Site Preparation and Construction	Operations	Closure	Post-Closure
		Land removed from access	<u>Residual effect:</u> 364 ha where access will be removed for safety and security reasons	<u>Residual effect:</u> 364 ha where access will be removed for safety and security reasons	<u>Residual effect:</u> 364 ha where access will be removed for safety and security reasons	<u>No residual effect:</u> No access restrictions in the post-closure phase
	Diminished on-the-land Experience	<u>Changed views</u>	<u>No residual effect:</u> Project features will not be visible off-site	<u>Residual effect:</u> The WRSA will be visible from 852 ha of Thunder Lake, but likely will not be discernable	<u>Residual effect:</u> The WRSA will be visible from 852 ha of Thunder Lake, but likely will not be discernable	<u>Residual effect:</u> The WRSA will be visible from 852 ha of Thunder Lake, but likely will not be discernable
		<u>Noticeable changes in noise</u>	<u>Residual effect:</u> The Project will be audible from 171 ha around the operations area	<u>Residual effect:</u> The Project will be audible from 171 ha around the operations area	<u>Residual effect:</u> The Project will be audible from 171 ha around the operations area	<u>No residual effect:</u> There will be no source of noise from the Project
Hunting	Ungulates	Habitat Loss	<u>Residual effect:</u> 141 ha of ungulate habitat will be lost to hunting. Constitutes 0.6% of the available ungulate habitat in the RSA.	<u>Residual effect:</u> 141 ha of ungulate habitat will be lost to hunting. Constitutes 0.6% of the available ungulate habitat in the RSA.	<u>Residual effect:</u> 141 ha of ungulate habitat will be lost to hunting. Constitutes 0.6% of the available ungulate habitat in the RSA.	<u>No residual effect:</u> Habitat in the post-closure phase will return.
		Quality for consumption	<u>No residual effect:</u> No residual effects via ingestion of country foods identified in human health risk assessment as a result of the Project.	<u>No residual effect:</u> No residual effects via ingestion of country foods identified in human health risk assessment as a result of the Project.	<u>No residual effect:</u> No residual effects via ingestion of country foods identified in human health risk assessment as a result of the Project.	<u>No residual effect:</u> No residual effects via ingestion of country foods identified in human health risk assessment as a result of the Project.
	Furbearers	Habitat Loss	<u>Residual effect:</u> 96 ha of American martin habitat will be lost to hunting. Constitutes 7.4% of the available American martin habitat in the LSA. <u>No residual effect:</u> Ample beaver habitat in the LSA not a meaningful	<u>Residual effect:</u> 96 ha of American martin habitat will be lost to hunting. Constitutes 7.4% of the available American martin habitat in the LSA. <u>No residual effect:</u> Ample beaver habitat in the LSA not a meaningful	<u>Residual effect:</u> 96 ha of American martin habitat will be lost to hunting. Constitutes 7.4% of the available American martin habitat in the LSA. <u>No residual effect:</u> Ample beaver habitat in the LSA not a meaningful	<u>No residual effect:</u> Habitat in the post-closure phase will return.

Valued Component	Indicators	Measures	Predicted Aboriginal Residual Effects			
			Site Preparation and Construction	Operations	Closure	Post-Closure
			amount of habitat removed.	amount of habitat removed.	amount of habitat removed.	
		Quality for consumption	<u>No residual effect:</u> No residual effects via ingestion of country foods identified in human health risk assessment as a result of the Project.	<u>No residual effect:</u> No residual effects via ingestion of country foods identified in human health risk assessment as a result of the Project.	<u>No residual effect:</u> No residual effects via ingestion of country foods identified in human health risk assessment as a result of the Project.	<u>No residual effect:</u> No residual effects via ingestion of country foods identified in human health risk assessment as a result of the Project.
	Waterfowl	Habitat Loss	<u>Residual effect:</u> 54.5 ha of waterfowl habitat will be lost to hunting. Constitutes 3.8% of the available waterfowl habitat in the LSA.	<u>Residual effect:</u> 54.5 ha of waterfowl habitat will be lost to hunting. Constitutes 3.8% of the available waterfowl habitat in the LSA.	<u>Residual effect:</u> 54.5 ha of waterfowl habitat will be lost to hunting. Constitutes 3.8% of the available waterfowl habitat in the LSA.	<u>No residual effect:</u> Habitat in the post-closure phase will return.
		Quality for consumption	<u>No residual effect:</u> No residual effects via ingestion of country foods identified in human health risk assessment as a result of the Project.	<u>No residual effect:</u> No residual effects via ingestion of country foods identified in human health risk assessment as a result of the Project.	<u>No residual effect:</u> No residual effects via ingestion of country foods identified in human health risk assessment as a result of the Project.	<u>No residual effect:</u> No residual effects via ingestion of country foods identified in human health risk assessment as a result of the Project.
	Changes in Access	Land where access is controlled	<u>Residual effect:</u> 379 ha where access will require a Treasury escort for safety and security reasons	<u>Residual effect:</u> 379 ha where access will require a Treasury escort for safety and security reasons	<u>Residual effect:</u> 379 ha where access will require a Treasury escort for safety and security reasons	<u>No residual effect:</u> No access restrictions in the post-closure phase.
		Land removed from access	<u>Residual effect:</u> 364 ha where access will be removed for safety and security reasons	<u>Residual effect:</u> 364 ha where access will be removed for safety and security reasons	<u>Residual effect:</u> 364 ha where access will be removed for safety and security reasons	<u>No residual effect:</u> No access restrictions in the post-closure phase
	Diminished on-the-land Experience	Change views	<u>No residual effect:</u> Project features will not be visible off-site	<u>Residual effect:</u> The WRSA will be visible from 852 ha of Thunder Lake, but likely will not be discernable	<u>Residual effect:</u> The WRSA will be visible from 852 ha of Thunder Lake, but likely will not be discernable	<u>Residual effect:</u> The WRSA will be visible from 852 ha of Thunder Lake, but likely will not be discernable

Valued Component	Indicators	Measures	Predicted Aboriginal Residual Effects			
			Site Preparation and Construction	Operations	Closure	Post-Closure
		Noticeable changes in noise	<u>Residual effect:</u> The Project will be audible from 171 ha around the operations area	<u>Residual effect:</u> The Project will be audible from 171 ha around the operations area	<u>Residual effect:</u> The Project will be audible from 171 ha around the operations area	<u>No residual effect:</u> There will be no source of noise from the Project
Trapping	Furbearers	Habitat Loss	<u>Residual effect:</u> 96 ha of American martin habitat will be lost to hunting. Constitutes 7.4% of the available American martin habitat in the LSA. <u>No residual effect:</u> Ample beaver habitat in the LSA not a meaningful amount of habitat removed.	<u>Residual effect:</u> 96 ha of American martin habitat will be lost to hunting. Constitutes 7.4% of the available American martin habitat in the LSA. <u>No residual effect:</u> Ample beaver habitat in the LSA not a meaningful amount of habitat removed.	<u>Residual effect:</u> 96 ha of American martin habitat will be lost to hunting. Constitutes 7.4% of the available American martin habitat in the LSA. <u>No residual effect:</u> Ample beaver habitat in the LSA not a meaningful amount of habitat removed.	<u>No residual effect:</u> The operations area will be reclaimed to productive habitat available for trapping.
	Changes in Access	Land where access is controlled	<u>Residual effect:</u> 379 ha where access will require a Treasury escort for safety and security reasons	<u>Residual effect:</u> 379 ha where access will require a Treasury escort for safety and security reasons	<u>Residual effect:</u> 379 ha where access will require a Treasury escort for safety and security reasons	<u>No residual effect:</u> No access restrictions in the post-closure phase.
		Land removed from access	<u>Residual effect:</u> 364 ha where access will be removed for safety and security reasons	<u>Residual effect:</u> 364 ha where access will be removed for safety and security reasons	<u>Residual effect:</u> 364 ha where access will be removed for safety and security reasons	<u>No residual effect:</u> No access restrictions in the post-closure phase
	Diminished on-the-land Experience	Change views	<u>No residual effect:</u> Project features will not be visible off-site	<u>Residual effect:</u> The WRSA will be visible from 852 ha of Thunder Lake, but likely will not be discernable	<u>Residual effect:</u> The WRSA will be visible from 852 ha of Thunder Lake, but likely will not be discernable	<u>Residual effect:</u> The WRSA will be visible from 852 ha of Thunder Lake, but likely will not be discernable
		Noticeable changes in noise	<u>Residual effect:</u> The Project will be audible from 171 ha around the operations area	<u>Residual effect:</u> The Project will be audible from 171 ha around the operations area	<u>Residual effect:</u> The Project will be audible from 171 ha around the operations area	<u>No residual effect:</u> There will be no source of noise from the Project

Valued Component	Indicators	Measures	Predicted Aboriginal Residual Effects			
			Site Preparation and Construction	Operations	Closure	Post-Closure
Fishing	Sport Fish	Change in abundance	<u>No residual effect:</u> Change in water quality and quantity as a result of the Project will not affect sport fish abundance in Thunder Lake or Wabigoon Lake.	<u>No residual effect:</u> Change in water quality and quantity as a result of the Project will not affect sport fish abundance in Thunder Lake or Wabigoon Lake.	<u>No residual effect:</u> Change in water quality and quantity as a result of the Project will not affect sport fish abundance in Thunder Lake or Wabigoon Lake.	<u>No residual effect:</u> Change in water quality and quantity as a result of the Project will not affect sport fish abundance in Thunder Lake or Wabigoon Lake.
		Quality for consumption	<u>No residual effect:</u> No residual effects via ingestion of country foods identified in human health risk assessment as a result of the Project.	<u>No residual effect:</u> No residual effects via ingestion of country foods identified in human health risk assessment as a result of the Project.	<u>No residual effect:</u> No residual effects via ingestion of country foods identified in human health risk assessment as a result of the Project.	<u>No residual effect:</u> No residual effects via ingestion of country foods identified in human health risk assessment as a result of the Project.
	Baitfish	Change in abundance	<u>No residual effect</u> Baitfish habitat loss as a result of the Project will be offset by constructing new fish habitat. Project effects will not affect the abundance of baitfish in surrounding creeks and tributaries.	<u>No residual effect</u> Baitfish habitat loss as a result of the Project will be offset by constructing new fish habitat. Project effects will not affect the abundance of baitfish in surrounding creeks and tributaries.	<u>No residual effect</u> Baitfish habitat loss as a result of the Project will be offset by constructing new fish habitat. Project effects will not affect the abundance of baitfish in surrounding creeks and tributaries.	<u>No residual effect</u> Baitfish habitat loss as a result of the Project will be offset by constructing new fish habitat. Project effects will not affect the abundance of baitfish in surrounding creeks and tributaries.
	Commercial Fishing	Fish for consumption (sport fish)	<u>No residual effect:</u> Change in water quality and quantity as a result of the Project will not affect sport fish abundance in Thunder Lake or Wabigoon Lake.	<u>No residual effect:</u> Change in water quality and quantity as a result of the Project will not affect sport fish abundance in Thunder Lake or Wabigoon Lake.	<u>No residual effect:</u> Change in water quality and quantity as a result of the Project will not affect sport fish abundance in Thunder Lake or Wabigoon Lake.	<u>No residual effect:</u> Change in water quality and quantity as a result of the Project will not affect sport fish abundance in Thunder Lake or Wabigoon Lake.
		Bait fishing	<u>No residual effect</u> Baitfish habitat loss as a result of the Project will be offset by constructing new fish habitat. Project effects will not affect the	<u>No residual effect</u> Baitfish habitat loss as a result of the Project will be offset by constructing new fish habitat. Project effects will not affect the	<u>No residual effect</u> Baitfish habitat loss as a result of the Project will be offset by constructing new fish habitat. Project effects will not affect the	<u>No residual effect</u> Baitfish habitat loss as a result of the Project will be offset by constructing new fish habitat. Project effects will not affect the

Valued Component	Indicators	Measures	Predicted Aboriginal Residual Effects			
			Site Preparation and Construction	Operations	Closure	Post-Closure
			abundance of baitfish in surrounding creeks and tributaries.	abundance of baitfish in surrounding creeks and tributaries.	abundance of baitfish in surrounding creeks and tributaries.	abundance of baitfish in surrounding creeks and tributaries.
	Changes in Access	Land where access is controlled	<u>Residual effect:</u> 379 ha where access will require a Treasury escort for safety and security reasons. The irrigation ponds at the former MNRF Tree Nursery will still be accessible.	<u>Residual effect:</u> 379 ha where access will require a Treasury escort for safety and security reasons. The irrigation ponds at the former MNRF Tree Nursery will still be accessible.	<u>Residual effect:</u> 379 ha where access will require a Treasury escort for safety and security reasons. The irrigation ponds at the former MNRF Tree Nursery will still be accessible.	<u>No residual effect:</u> No access restrictions in the post-closure phase.
		Land removed from access	<u>Residual effect:</u> 364 ha where access will be removed for safety and security reasons	<u>Residual effect:</u> 364 ha where access will be removed for safety and security reasons	<u>Residual effect:</u> 364 ha where access will be removed for safety and security reasons	<u>No residual effect:</u> No access restrictions in the post-closure phase
	Diminished on-the-land Experience	Change views	<u>No residual effect:</u> Project features will not be visible off-site	<u>Residual effect:</u> The WRSA will be visible from 852 ha of Thunder Lake, but likely will not be discernable	<u>Residual effect:</u> The WRSA will be visible from 852 ha of Thunder Lake, but likely will not be discernable	<u>Residual effect:</u> The WRSA will be visible from 852 ha of Thunder Lake, but likely will not be discernable
		Noticeable changes in noise	<u>Residual effect:</u> The Project will be audible from 171 ha around the operations area	<u>Residual effect:</u> The Project will be audible from 171 ha around the operations area	<u>Residual effect:</u> The Project will be audible from 171 ha around the operations area	<u>No residual effect:</u> There will be no source of noise from the Project
Cultural and Spiritual	Cultural and Spiritual Sites	Loss or disturbance to known sites	<u>No residual effect:</u> No identified cultural or spiritual site will be affected by the Project	<u>No residual effect:</u> No identified cultural or spiritual site will be affected by the Project	<u>No residual effect:</u> No identified cultural or spiritual site will be affected by the Project	<u>No residual effect:</u> No identified cultural or spiritual site will be affected by the Project
		Restriction to access	<u>No residual effect:</u> There will be no restriction to access to any identified cultural or spiritual sites due to the Project	<u>No residual effect:</u> There will be no restriction to access to any identified cultural or spiritual sites due to the Project	<u>No residual effect:</u> There will be no restriction to access to any identified cultural or spiritual sites due to the Project	<u>No residual effect:</u> There will be no restriction to access to any identified cultural or spiritual sites due to the Project

Valued Component	Indicators	Measures	Predicted Aboriginal Residual Effects			
			Site Preparation and Construction	Operations	Closure	Post-Closure
	Traditional Travel Routes	Interruption – discontinued	<u>No residual effect:</u> There are no known traditional travel routes through the immediate Project site.	<u>No residual effect:</u> There are no known traditional travel routes through the immediate Project site.	<u>No residual effect:</u> There are no known traditional travel routes through the immediate Project site.	<u>No residual effect:</u> There are no known traditional travel routes through the immediate Project site.
		Interference – close to Project	<u>No residual effect:</u> Traditional travel routes to Rice Lake via Thunder Lake will not be affected.	<u>No residual effect:</u> Traditional travel routes to Rice Lake via Thunder Lake will not be affected.	<u>No residual effect:</u> Traditional travel routes to Rice Lake via Thunder Lake will not be affected.	<u>No residual effect:</u> Traditional travel routes to Rice Lake via Thunder Lake will not be affected.
	Diminished on-the-land Experience	Change views	<u>No residual effect:</u> Project features will not be visible off-site	<u>Residual effect:</u> The WRSA will be visible from 852 ha of Thunder Lake, but likely will not be discernable	<u>Residual effect:</u> The WRSA will be visible from 852 ha of Thunder Lake, but likely will not be discernable	<u>Residual effect:</u> The WRSA will be visible from 852 ha of Thunder Lake, but likely will not be discernable
		Noticeable changes in noise	<u>Residual effect:</u> The Project will be audible from 171 ha around the operations area	<u>Residual effect:</u> The Project will be audible from 171 ha around the operations area	<u>Residual effect:</u> The Project will be audible from 171 ha around the operations area	<u>No residual effect:</u> There will be no source of noise from the Project
Socio-economic Factors	Economic Effects	Aboriginal employment opportunities	<u>Residual positive effect:</u> The Project will create job opportunities for Aboriginal peoples with varying levels of educational requirements (Table 6.18.4.2-1)	<u>Residual positive effect:</u> The Project will create job opportunities for Aboriginal peoples with varying levels of educational requirements (Table 6.18.4.2-1)	<u>Residual positive effect:</u> The Project will create job opportunities for Aboriginal peoples with varying levels of educational requirements (Table 6.18.4.2-1)	<u>Residual neutral effect:</u> Although the jobs from the Project will no longer exist in the post-closure phase, the experience and training that Aboriginal peoples received can easily transfer to jobs in industry.
		Cost of living	<u>Residual positive effect:</u> Demand for labour, goods, and services by the Project and by workers moving into the	<u>Residual positive effect:</u> Demand for labour, goods, and services by the Project and by workers moving into the	<u>Residual adverse effect:</u> The demand for labour, goods, and services by the Project will decline and reduce the cost of living.	<u>Residual adverse effect:</u> The demand for labour, goods, and services by the Project will decline and reduce the cost of living.

Valued Component	Indicators	Measures	Predicted Aboriginal Residual Effects			
			Site Preparation and Construction	Operations	Closure	Post-Closure
			Project area will increase the cost of living.	Project area will increase the cost of living.		
		Project purchases from Aboriginal Businesses	<u>Residual positive effect:</u> Treasury Metals has committed to a local purchasing policy, which will provide business to Aboriginal people owned businesses.	<u>Residual positive effect:</u> Treasury Metals has committed to a local purchasing policy, which will provide business to Aboriginal people owned businesses.	<u>Residual neutral effect:</u> The benefits of purchases made by Treasury Metals in the local communities will cease.	<u>Residual neutral effect:</u> The benefits of purchases made by Treasury Metals in the local communities will cease.
	Social Effects	In- and out-migration	<u>Residual positive effect:</u> The Project could result in an in-migration of workers to could help reverse the pattern of out-migration in the socio-economic study area.	<u>Residual positive effect:</u> The Project could result in an in-migration of workers to could help reverse the pattern of out-migration in the socio-economic study area.	<u>Residual adverse effect:</u> The out-migration of workers leaving the area would be most prominent during this phase.	<u>Residual adverse effect:</u> The pattern of out-migration of the area would return to pre-project conditions.
		Capacity of education services	<u>Residual adverse effect:</u> Potential increased demand on education services. It is anticipated that any increase in enrollment could be accommodated within the existing education system	<u>Residual adverse effect:</u> Potential increased demand on education services. It is anticipated that any increase in enrollment could be accommodated within the existing education system	<u>Residual adverse effect:</u> Potential increased demand on education services. It is anticipated that any increase in enrollment could be accommodated within the existing education system	<u>No residual effect:</u> The demand on education services will return to pre-project conditions.
		Education attainment	<u>Residual positive effect:</u> The Project will provide on-the-job training for individual with limited education, and provide opportunities to encourage others to attain higher levels of education	<u>Residual positive effect:</u> The Project will provide on-the-job training for individual with limited education, and provide opportunities to encourage others to attain higher levels of education	<u>Residual positive effect:</u> The Project will provide on-the-job training for individual with limited education, and provide opportunities to encourage others to attain higher levels of education	<u>Residual neutral effect:</u> Although the jobs from the Project will no longer exist in the post-closure phase, the education, experience and training that Aboriginal peoples received can easily transfer to jobs in industry.

Valued Component	Indicators	Measures	Predicted Aboriginal Residual Effects			
			Site Preparation and Construction	Operations	Closure	Post-Closure
		Project-specific Training	<u>Residual positive effect:</u> There will be increased training and education opportunities for unemployed and under-employed residents and non-resident workers	<u>Residual positive effect:</u> There will be increased training and education opportunities for unemployed and under-employed residents and non-resident workers	<u>Residual positive effect:</u> There will be increased training and education opportunities for unemployed and under-employed residents and non-resident workers	<u>No residual effect:</u> There will be no training opportunities following closure from the Project
		Housing availability	<u>Residual adverse effect:</u> There could be additional stresses on community housing due to in-migration of workers.	<u>Residual adverse effect:</u> There could be additional stresses on community housing due to in-migration of workers.	<u>Residual adverse effect:</u> There could be additional stresses on community housing due to in-migration of workers.	<u>No residual effect:</u> Housing availability will return to pre-project levels.
		Property values (off-reserve)	<u>Residual neutral effect:</u> There could be an increase in property values as a result of the Project. This is a positive effect to people trying to sell their property and a negative effect to people trying to buy property.	<u>Residual neutral effect:</u> There could be an increase in property values as a result of the Project. This is a positive effect to people trying to sell their property and a negative effect to people trying to buy property.	<u>Residual neutral effect:</u> There could be an increase in property values as a result of the Project. This is a positive effect to people trying to sell their property and a negative effect to people trying to buy property.	<u>Residual neutral effect:</u> There could be a decrease in property values to pre-project conditions. This is a negative effect to people trying to sell their property and a positive effect to people trying to buy property.
		Capacity of emergency services	<u>Residual adverse effect:</u> There could be additional stresses on the emergency services in the area due to the in-migration of workers.	<u>Residual adverse effect:</u> There could be additional stresses on the emergency services in the area due to the in-migration of workers.	<u>Residual adverse effect:</u> There could be additional stresses on the emergency services in the area due to the in-migration of workers.	<u>No residual effect:</u> Emergency services use would return to pre-project conditions.
		Road network capacity and conditions	<u>No residual effect:</u> Based on the traffic study (Appendix E), the existing road network can handle the slight increase in traffic on Highway 17.	<u>No residual effect:</u> Based on the traffic study (Appendix E), the existing road network can handle the slight increase in traffic on Highway 17.	<u>No residual effect:</u> Based on the traffic study (Appendix E), the existing road network can handle the slight increase in traffic on Highway 17.	<u>No residual effect:</u> Traffic on Highway 17 will return to pre-project conditions.

