

PHOTOGRAPHS



Photo #: 1

Compaction Test being completed on CCL Lift 2
Panel 2



Photo #: 2

Location of EMRS21-L2-131 sample.



Photo #: 3

Location of EMRS21-L2-132 sample.



Photo #: 4

Location of EMRS21-L2-133 sample.

PHOTOGRAPHS



Photo #: 5

Location of EMRS21-L2-134 sample.



Photo #: 6

Location of EMRS21-L2-135 sample.



Photo #: 7

CAT 349 excavator working to bulk NCL material down the slope.



Photo #: 8

NCL Lift 3 placement on Panel 2. Also, covered burrito in the background.

| | | | |
|---------------------|--------------|--------------------------|-----------------------|
| Date: | May 26, 2021 | Owner/Client: | New Gold Inc. |
| Day: | Wednesday | OKC Project #: | 1003-19 |
| Prepared by: | Brysin Shaw | Project Location: | Rainy River - Ontario |

Number of Pages in Report 4

Environmental Conditions:

Morning Conditions

Weather

Cloudy

Precipitation

0 - 5 mm

Temperature
(High/Low)

9

1

Humidity

40 to 60%

Wind

Low

Afternoon Conditions

Weather

Fair

Precipitation

0 mm

Temperature
(High/Low)

12

9

Humidity

40 to 60%

Wind

High

Meeting Summaries

General Remarks

NG completed placing NCL Lift 3 for Panel 2 from 2+850 to 2+891, O/S -89m to 2.1m.

NG starting placing NCL Lift 4 for Panel 2 from 2+850 to 2+891, O/S -89m to -45m.

Description of CCL Material:

No CCL material was placed today.

Panel Approval:

Panel Description

| | Yes | No | Comment |
|---|--------------------------|--------------------------|---------|
| Material Inspection Suitable for Construction | <input type="checkbox"/> | <input type="checkbox"/> | |
| Visual Inspection | <input type="checkbox"/> | <input type="checkbox"/> | |
| Layer Thickness Acceptable | <input type="checkbox"/> | <input type="checkbox"/> | |
| Water Content within Acceptable Range | <input type="checkbox"/> | <input type="checkbox"/> | |
| Density within Acceptable Range | <input type="checkbox"/> | <input type="checkbox"/> | |
| Corrected Actions Taken | <input type="checkbox"/> | <input type="checkbox"/> | |

Testing and Sampling Completed:

Sample EMRS21-L3-136
Moisture content
Sample EMRS21-L3-137
Moisture content and hydrometer.

Work Location and Task:

| Task Description | Location of Work | Equipment & Personnel Used |
|--------------------|------------------|----------------------------|
| NCL Lift 3 Panel 2 | 2+850 to 2+891 | D8-1, D8-2, & CAT 349 |
| NCL Lift 4 Panel 2 | 2+850 to 2+891 | D8-1, D8-2, & CAT 349 |

Key-in Trench:

| Location | CCL Contact Material | Comment |
|----------|----------------------|---------|
|----------|----------------------|---------|

By signing below I agree that the above statements are an accurate representation of the days events.

CQA / New Gold Representative :

<original signed by>

CQC Representative:

<original signed by>

PHOTOGRAPHS



Photo #: 1

NCL Lift 3 Panel 2.



Photo #: 2

NCL Lift 3 Panel 2.



Photo #: 3

Starting placement of NCL Lift 4 Panel 2.



Photo #: 4

D8-1, D8-2, & CAT 349 bulking and pushing NCL Lift 4 down the slope on Panel 2.

| | | | |
|---------------------|--------------|--------------------------|-----------------------|
| Date: | May 27, 2021 | Owner/Client: | New Gold Inc. |
| Day: | Thursday | OKC Project #: | 1003-19 |
| Prepared by: | Brysin Shaw | Project Location: | Rainy River - Ontario |

Number of Pages in Report 5

Environmental Conditions:

Morning Conditions

Weather

Cloudy

Precipitation

0 mm

Temperature
(High/Low)

4

1

Humidity

20 to 40%

Wind

Moderate

Afternoon Conditions

Weather

Clear

Precipitation

0 mm

Temperature
(High/Low)

10

4

Humidity

20 to 40%

Wind

Low

Meeting Summaries

General Remarks

NG finished placing NCL Lift 3 on Panel 2 from STA 2+853 to 2+859, O/S -9.6m to 6.7m.

NG also finished placing NCL Lift 4 on Panel 1` from STA 2+893 to 2+932, O/S -73m to -86m.

NG also finished placing NCL Lift 4 on Panel 2 from STA 2+857 to 2+894, O/S -89m to 12m.

NG starting placing CCL Lift 1 on Panel 3 from approximately STA 2+802 to 2+848, O/S -28m to -42m.

Description of CCL Material:

Dark brown, very sticky and pliable. No large rocks. Material very consistent throughout the panel.

Panel Approval:

Panel Description

Started placing CCL L1 on panel 3 from approximately STA 2+802 to 2+848, O/S -28m to -42m.

| | Yes | No | Comment |
|---|-------------------------------------|-------------------------------------|-----------------|
| Material Inspection Suitable for Construction | <input checked="" type="checkbox"/> | <input type="checkbox"/> | |
| Visual Inspection | <input checked="" type="checkbox"/> | <input type="checkbox"/> | |
| Layer Thickness Acceptable | <input type="checkbox"/> | <input checked="" type="checkbox"/> | Not graded yet. |
| Water Content within Acceptable Range | <input type="checkbox"/> | <input checked="" type="checkbox"/> | Not tested yet. |
| Density within Acceptable Range | <input type="checkbox"/> | <input checked="" type="checkbox"/> | Not tested yet. |
| Corrected Actions Taken | <input type="checkbox"/> | <input type="checkbox"/> | |

Testing and Sampling Completed:

Sample EMRS21-L4-138
Moisture content.
Sample EMRS21-L4-139
Moisture content and hydrometer.

Work Location and Task:

| Task Description | Location of Work | Equipment & Personnel Used |
|------------------|--------------------|----------------------------|
| NCL Lift 3 | STA 2+853 to 2+859 | D8-1, D8-2, & CAT 349 |
| NCL Lift 4 | STA 2+857 to 2+932 | D8-1, D8-2, & CAT 349 |
| CCL Lift 1 | STA 2+802 to 2+848 | D8-1, D8-2, & CAT 349 |

Key-in Trench:

| Location | CCL Contact Material | Comment |
|----------|----------------------|---------|
|----------|----------------------|---------|

By signing below I agree that the above statements are an accurate representation of the days events.

CQA / New Gold Representative :

<original signed by>

CQC Representative:

<original signed by>

PHOTOGRAPHS



Photo #: 1

Placing of NCL L4 on Panel 2



Photo #: 2

Placing of NCL L4 on Panel 2



Photo #: 3

NG grading NCL L4 on Panel 2

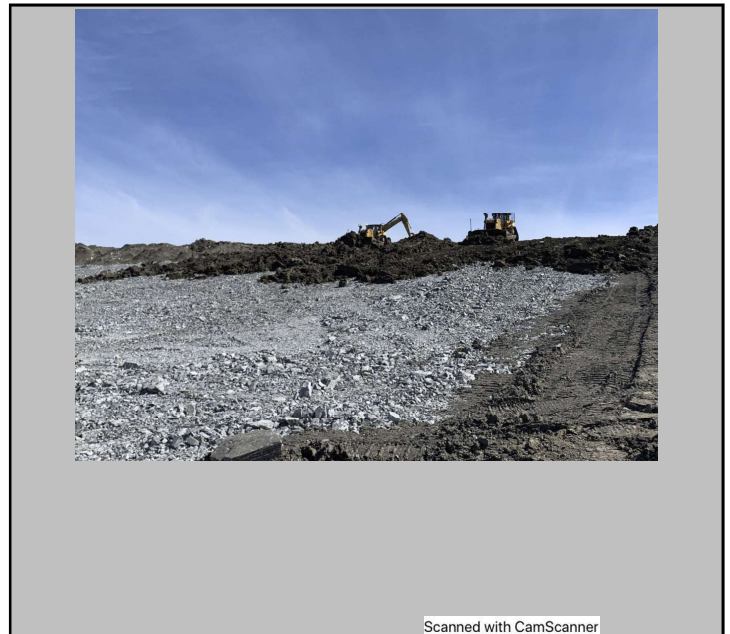


Photo #: 4

NG D8 dozers and CAT349 excavator starting to place CCL L1 on Panel 3

PHOTOGRAPHS

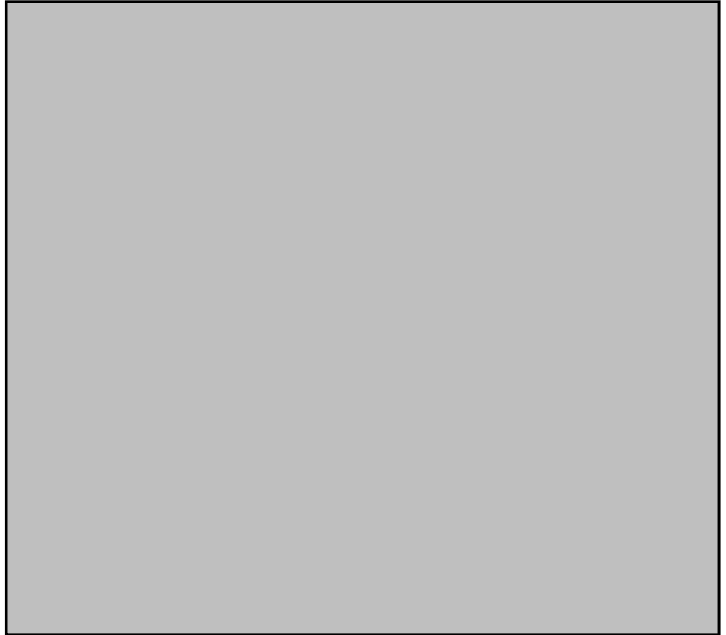


Photo #: 5

Photo #:

NG D8 dozers starting to push CCL L1 on Panel 3.

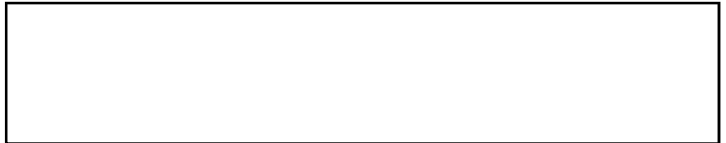


Photo #:

Photo #:



Duplicate Page

| | | | |
|---------------------|--------------|--------------------------|-----------------------|
| Date: | May 28, 2021 | Owner/Client: | New Gold Inc. |
| Day: | Friday | OKC Project #: | 1003-19 |
| Prepared by: | Brysin Shaw | Project Location: | Rainy River - Ontario |

Number of Pages in Report 5

Environmental Conditions:

Morning Conditions

Weather

Fair

Precipitation 0 mm

Temperature
(High/Low)

10 1

Humidity

40 to 60%

Wind

Moderate

Afternoon Conditions

Weather

Clear

Precipitation 0 mm

Temperature
(High/Low)

16 14

Humidity

40 to 60%

Wind

Low

Meeting Summaries

Had a discussion with Blake from Okane in the field about completing a test strip to see if two passes with the packer would be adequate instead of four as brought up during the May 25, 2021 EMRS meeting. So far the results from the test strip show that two passes is adequate but more testing on the CCL L1 Panel is required before Okane will give the go ahead to use two passes from now on.

General Remarks

NG finished excavating key trench from STA 2+792 to 2+844. Excavated to a depth of approximately 1.5m to 2m.

NG finished placing CCL L1 on Panel 3. Panel is complete from STA 2+833 to 2+855, O/S -87m to 6.3m. Packing and testing is still required from STA 2+795 to 2+833, O/S -87m to -1m.

Description of CCL Material:

Dark brown, very sticky and pliable. A few larger rocks were scattered throughout the panel that had to be removed prior to panel approval. Material very consistent throughout the panel.

Panel Approval:

Panel Description

Panel 3, CCL L1. Panel is complete from STA 2+833 to 2+855, O/S -87m to 6.3m. Packing and testing is still required from STA 2+795 to 2+833, O/S -87m to -1m.

| | Yes | No | Comment |
|---|-------------------------------------|--------------------------|-----------------------------|
| Material Inspection Suitable for Construction | <input checked="" type="checkbox"/> | <input type="checkbox"/> | |
| Visual Inspection | <input checked="" type="checkbox"/> | <input type="checkbox"/> | |
| Layer Thickness Acceptable | <input checked="" type="checkbox"/> | <input type="checkbox"/> | |
| Water Content within Acceptable Range | <input checked="" type="checkbox"/> | <input type="checkbox"/> | |
| Density within Acceptable Range | <input checked="" type="checkbox"/> | <input type="checkbox"/> | Higher but within tolerance |
| Corrected Actions Taken | <input type="checkbox"/> | <input type="checkbox"/> | |

Testing and Sampling Completed:

Sample EMRS21-L1-140
Moisture content.
Sample EMRS21-L1-141
Moisture content, Atterberg, and hydrometer.
Sample EMRS21-L1-142
Moisture content.

Work Location and Task:

| Task Description | Location of Work | Equipment & Personnel Used |
|------------------|---------------------|----------------------------|
| CCL L1 | STA 2+833 to 2+855, | D8-1 & Packer |
| CCL L1 | STA 2+795 to 2+833 | D8-1, D8-2, & CAT 349 |

Key-in Trench:

| Location | CCL Contact Material | Comment |
|---------------------|----------------------|----------------------------|
| STA 2+792 to 2+844. | Sandy Clay | Material approved by Okane |

By signing below I agree that the above statements are an accurate representation of the days events.

CQA / New Gold Representative :

<original signed by>

CQC Representative:

<original signed by>

PHOTOGRAPHS



Scanned with CamScanner

Photo #: 1

NG excavating key trench at approx. 2+844.



Scanned with CamScanner

Photo #: 2

Excavated key trench at STA 2+792 to 2+844.



Scanned with CamScanner

Photo #: 3

NG placing material in key trench at STA 2+792 to 2+844.



Scanned with CamScanner

Photo #: 4

Transition area between Panel 2 and Panel 3.

PHOTOGRAPHS



Scanned with CamScanner

Photo #: 5

Sample EMRS21-L1-140.



Scanned with CamScanner

Photo #:

Sample EMRS21-L1-141.



Scanned with CamScanner

Photo #:

Sample EMRS21-L1-142



Scanned with CamScanner

Photo #:

Packer packing CCL L1, Panel 3.

| | | | |
|---------------------|--------------|--------------------------|-----------------------|
| Date: | May 29, 2021 | Owner/Client: | New Gold Inc. |
| Day: | Saturday | OKC Project #: | 1003-19 |
| Prepared by: | Brysin Shaw | Project Location: | Rainy River - Ontario |

Number of Pages in Report

Environmental Conditions:

Morning Conditions

Weather

Clear

Precipitation

0 mm

Temperature
(High/Low)

12

2

Humidity

40 to 60%

Wind

Moderate

Afternoon Conditions

Weather

Cloudy

Precipitation

0 mm

Temperature
(High/Low)

20

12

Humidity

20 to 40%

Wind

High

Meeting Summaries

Based on in field density tests taken by CQC, CQA mentioned that the quality of the CCL material used on lift 1 for Panel 3 had deteriorated from the quality of the material used in Panel 2. CQA also brought up that the stockpiled material that was going to be used for CCL lift 2 on Panel 3 was visually lower quality as well. An in field discussion between CQA, CQC, and NGC concluded that CCL lift 2 placement would continue on Panel 3 but that higher quality material would be brought in and that lower quality material would be mixed in with higher quality material. Also, CQC would take a stockpile samples for Proctor Test.

General Remarks

NG finished packing CCL Lift 1 on Panel 3 from STA 2+797 to 2+833, O/S -88m to 3.5m. This panel is now complete.

NG started placing CCL Lift 2 on Panel 3 from approximately STA 2+797 to 2+852, O/S -88 to -15m.

Description of CCL Material:

Dark brown with spots of light brown mixed in. Material seemed to have a higher granular content than material we've been seeing up to this point. A few larger rocks were scattered throughout the panel that had to be removed prior to panel approval.

Panel Approval:

Panel Description

Panel 3 CCL Lift 1 approved from STA 2+797 to 2+855, O/S -88m to 6.3m.

| | Yes | No | Comment |
|---|-------------------------------------|--------------------------|----------------------------|
| Material Inspection Suitable for Construction | <input checked="" type="checkbox"/> | <input type="checkbox"/> | |
| Visual Inspection | <input checked="" type="checkbox"/> | <input type="checkbox"/> | |
| Layer Thickness Acceptable | <input checked="" type="checkbox"/> | <input type="checkbox"/> | |
| Water Content within Acceptable Range | <input checked="" type="checkbox"/> | <input type="checkbox"/> | |
| Density within Acceptable Range | <input checked="" type="checkbox"/> | <input type="checkbox"/> | Majority results over 103% |
| Corrected Actions Taken | <input checked="" type="checkbox"/> | <input type="checkbox"/> | |

Testing and Sampling Completed:

Sample EMRS21-L1-S143
Moisture content, Atterberg, and hydrometer
Sample EMRS21-L1-S144
Moisture content
Sample EMRS21-L1-S145
Moisture content
Sample EMRS21-SP-105
Proctor
Sample EMRS-SP-106
Proctor

Work Location and Task:

| Task Description | Location of Work | Equipment & Personnel Used |
|--------------------|------------------------|----------------------------|
| Packing lift 1 CCL | P3, STA 2+797 to 2+833 | Packer |
| Pushing lift 2 CCL | P3, STA 2+797 to 2+852 | D8-1, D8-2, CAT 349. |

Key-in Trench:

| Location | CCL Contact Material | Comment |
|----------|----------------------|---------|
|----------|----------------------|---------|

By signing below I agree that the above statements are an accurate representation of the days events.

CQA / New Gold Representative :

<original signed by>

CQC Representative:

<original signed by>

PHOTOGRAPHS



Photo #: 1

Location of Sample EMRS21-L1-S143



Photo #: 2

Wet spot where density test EMRS21-L1-D34 was taken.



Photo #: 3

Location of Sample EMRS21-L1-S145

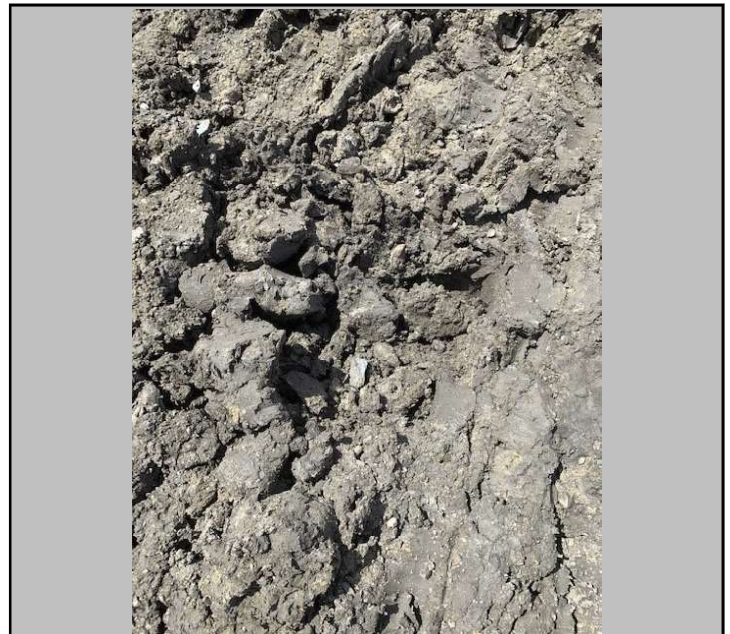


Photo #: 4

Location of sample EMRS21-SP-105.

PHOTOGRAPHS



Photo #: 5

Location of sample EMRS21-SP-106.



Photo #: 6

CCL L2 being placed on Panel 3.



Photo #: 7

CCL L2 being placed on Panel 3.



Photo #:

| | | | |
|---------------------|--------------|--------------------------|-----------------------|
| Date: | May 30, 2021 | Owner/Client: | New Gold Inc. |
| Day: | Sunday | OKC Project #: | 1003-19 |
| Prepared by: | Brysin Shaw | Project Location: | Rainy River - Ontario |

Number of Pages in Report 5

Environmental Conditions:

Morning Conditions

Weather

Cloudy

Precipitation

0 - 5 mm

Temperature
(High/Low)

8

4

Humidity

60 to 80%

Wind

Low

Afternoon Conditions

Weather

Fair

Precipitation

0 mm

Temperature
(High/Low)

18

8

Humidity

20 to 40%

Wind

Moderate

Meeting Summaries

General Remarks

NG finished placing CCL Lift 2 on Panel 3 from STA 2+797 to 2+855, O/S -88m to 6m. NG tried to pack the CCL Lift 2 material this morning but the material was to sticky and would not properly pack.

We let the material dry and started packing the CCL material again and finished a section from STA 2+833 to 2+855, O/S -88m to 6m before operations were shut down for the remainder of the day due to a weather.

Description of CCL Material:

Dark brown, very sticky and pliable. Material had a few spots of light brown mixed in. CCL material for Lift 2 was visually better looking then the material that was used in Lift 1.

Panel Approval:

Panel Description

Panel 3, CCL Lift 2 not yet approved.

| | Yes | No | Comment |
|---|--------------------------|-------------------------------------|---------|
| Material Inspection Suitable for Construction | <input type="checkbox"/> | <input checked="" type="checkbox"/> | |
| Visual Inspection | <input type="checkbox"/> | <input checked="" type="checkbox"/> | |
| Layer Thickness Acceptable | <input type="checkbox"/> | <input checked="" type="checkbox"/> | |
| Water Content within Acceptable Range | <input type="checkbox"/> | <input checked="" type="checkbox"/> | |
| Density within Acceptable Range | <input type="checkbox"/> | <input checked="" type="checkbox"/> | |
| Corrected Actions Taken | <input type="checkbox"/> | <input type="checkbox"/> | |

Testing and Sampling Completed:

Sample EMRS21-L2-S146
Proctor

Work Location and Task:

| Task Description | Location of Work | Equipment & Personnel Used |
|--------------------|------------------|----------------------------|
| Placing CCL Lift 2 | 2+797 to 2+855 | D8-1, D8-2, CAT349 |
| Packing CCL Lift 2 | 2+797 to 2+855 | Packer |

Key-in Trench:
Location

CCL Contact Material

Comment

By signing below I agree that the above statements are an accurate representation of the days events.

CQA / New Gold Representative :

CQC Representative:

<original signed by>

<original signed by>

PHOTOGRAPHS



Photo #: 1

Results of packer making a pass at 10:00 am this morning after it rained.



Photo #: 2

CCL L2 Panel 3 before compaction. Material was sticking to dozers and not grading well.

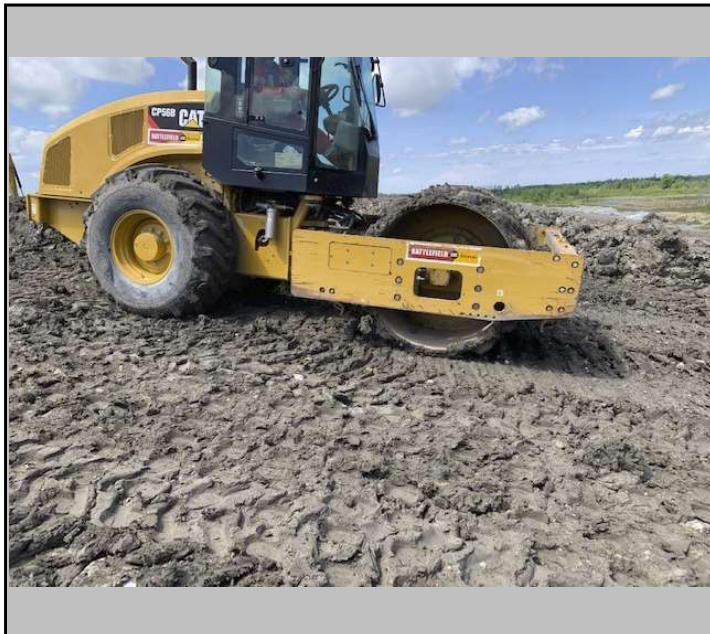


Photo #: 3

Packer attempting to compact CCL L2 material on Panel 3.



Photo #: 4

Packer attempting to compact CCL L2 material on Panel 3.

PHOTOGRAPHS



Photo #: 5

Sample EMRS21-L2-S146
Proctor



Photo #: 6

Panel 3 during rain delay at the end of the day.



Photo #:



Photo #:

| | | | |
|---------------------|--------------|--------------------------|-----------------------|
| Date: | May 31, 2021 | Owner/Client: | New Gold Inc. |
| Day: | Monday | OKC Project #: | 1003-19 |
| Prepared by: | Brysin Shaw | Project Location: | Rainy River - Ontario |

Number of Pages in Report 5

Environmental Conditions:

Morning Conditions

Weather

Clear

Precipitation

0 mm

Temperature
(High/Low)

17

7

Humidity

80 to 100%

Wind

Still

Afternoon Conditions

Weather

Clear

Precipitation

0 mm

Temperature
(High/Low)

22

17

Humidity

20 to 40%

Wind

Low

Meeting Summaries

General Remarks

CCL Lift 2 material on Panel 3 was still to wet to compact this morning. NG spent the morning stocking piling material in preparation for NCL Lift 3.

NG attempted to pack CCL Lift 2 material on Panel 3 again in the afternoon but the material was still to wet and the packer would spin trying to drive up the slope.

After Consulting with New Gold, it was decided that we would jump ahead and start placing CCL Lift 1 material on Panel 4 to keep production moving. The CCL Lift 1 material will be placed in a thicker lift (>0.25m) to prevent over drying, This way the material can be trimmed and reworked when we complete NCL Lift 3 on Panel 3.

Description of CCL Material:

Dark brown with a few light brown spots mixed in. Material seemed fairly sticky and pliable. Material that has already been placed on Panel 3 for CCL Lift 2 was very slippery and would stick to packer drum when NG attempted to pack.

Panel Approval:

Panel Description

No panel approvals were completed today.

| | Yes | No | Comment |
|---|--------------------------|-------------------------------------|---------|
| Material Inspection Suitable for Construction | <input type="checkbox"/> | <input checked="" type="checkbox"/> | |
| Visual Inspection | <input type="checkbox"/> | <input checked="" type="checkbox"/> | |
| Layer Thickness Acceptable | <input type="checkbox"/> | <input checked="" type="checkbox"/> | |
| Water Content within Acceptable Range | <input type="checkbox"/> | <input checked="" type="checkbox"/> | |
| Density within Acceptable Range | <input type="checkbox"/> | <input checked="" type="checkbox"/> | |
| Corrected Actions Taken | <input type="checkbox"/> | <input type="checkbox"/> | |

Testing and Sampling Completed:

No Samples or testing was completed today.

Work Location and Task:

| Task Description | Location of Work | Equipment & Personnel Used |
|-------------------------------|------------------------|----------------------------|
| Stockpile material for Lift 3 | Panel 3 | D8-1, D8-2, CAT 349 |
| Start Pushing CCL Lift 1 | P4, STA 2+760 to 2+797 | D8-1, & D8-2, |
| Attempt to pack CCL Lift 2 | Panel 3 | Packer |

Key-in Trench:

| Location | CCL Contact Material | Comment |
|----------|----------------------|---------|
|----------|----------------------|---------|

By signing below I agree that the above statements are an accurate representation of the days events.

CQA / New Gold Representative :

<original signed by>

COC Representative:

<original signed by>

PHOTOGRAPHS



Photo #: 1

Panel 3, CCL Lift 2 this morning.



Photo #: 2

Panel 3, CCL Lift 2 this morning.



Photo #: 3

EMRS base surface at approximately STA 2+700 that will need to be cleaned up prior to CCL placement



Photo #: 4

EMRS base surface at approximately STA 2+650 that will need to be cleaned up prior to CCL placement

Duplicate Page

PHOTOGRAPHS



Photo #: 5

EMRS base surface at approximately STA 2+650 that will need to be cleaned up prior to CCL placement



Photo #: 6

Packer attempting to pack CCL Lift 2 on Panel 3 this afternoon.



Photo #: 7

Marks from packer spinning while attempting to pack CCL Lift 2 on Panel 3 this afternoon.



Photo #: 8

D8-1 and D8-1 pushing CCL Lift 1 on Panel 4.

| | | | |
|---------------------|--------------|--------------------------|-----------------------|
| Date: | June 1, 2021 | Owner/Client: | New Gold Inc. |
| Day: | Tuesday | OKC Project #: | 1003-19 |
| Prepared by: | Brysin Shaw | Project Location: | Rainy River - Ontario |

Number of Pages in Report 5

Environmental Conditions:

| | | | | |
|-----------------------------|---------|-------|---------------|-----------|
| <u>Morning Conditions</u> | Weather | Clear | Precipitation | 0 mm |
| Temperature (High/Low) | 19 | 6 | Humidity | 60 to 80% |
| | | | Wind | Still |
| <u>Afternoon Conditions</u> | Weather | Clear | Precipitation | 0 mm |
| Temperature (High/Low) | 21 | 19 | Humidity | 40 to 60% |
| | | | Wind | Still |

Meeting Summaries

General Remarks

NG finished packing CCL Lift 2 on Panel 3 today. Panel 3 Lift 2 was approved and Tulloch completed an as-build topo of the panel.

NG started placing NCL Lift 3 on Panel 3.

NG also brought in another dozer to reshape/touch up the rock on the EMRS slope at approximately STA 2+550 to 2+700 in preparation for upcoming CCL placement.

Description of CCL Material:

Dark brown with spots of light brown mixed in. Material seemed sticky and pliable. Could squish the material between your fingers without it fully falling apart. Material would roll in your hands and create a fairly thin string without breaking apart.

Panel Approval:

Panel Description

Panel 3, CCL Lift 2 APPROVED from STA 2-797 to 2+855, O/S -88m to 7.5m.

| | Yes | No | Comment |
|---|-------------------------------------|--------------------------|---------|
| Material Inspection Suitable for Construction | <input checked="" type="checkbox"/> | <input type="checkbox"/> | |
| Visual Inspection | <input checked="" type="checkbox"/> | <input type="checkbox"/> | |
| Layer Thickness Acceptable | <input checked="" type="checkbox"/> | <input type="checkbox"/> | |
| Water Content within Acceptable Range | <input checked="" type="checkbox"/> | <input type="checkbox"/> | |
| Density within Acceptable Range | <input checked="" type="checkbox"/> | <input type="checkbox"/> | |
| Corrected Actions Taken | <input type="checkbox"/> | <input type="checkbox"/> | |

Testing and Sampling Completed:

Sample EMRS-L2-S147
Moisture Content
Sample EMRS-L2-S148
Moisture Content
Sample EMRS-L2-S149
Moisture Content, Atterberg, Hydrometer
Sample EMRS-L2-S150
Moisture Content
Sample EMRS-L2-S151
Moisture Content
Sample EMRS-L2-S152
Moisture Content

Work Location and Task:

| Task Description | Location of Work | Equipment & Personnel Used |
|--------------------|--------------------|----------------------------|
| Packing CCL Lift 2 | STA 2+797 to 2+855 | Packer |
| Pushing NCL Lift 3 | STA 2+797 to 2+855 | D8-1 & D8-2 |
| Reshape rock slope | STA 2+550 to 2+700 | 419 dozer & 831 excavator |

Key-in Trench:

| Location | CCL Contact Material | Comment |
|----------|----------------------|---------|
|----------|----------------------|---------|

By signing below I agree that the above statements are an accurate representation of the days events.

CQA / New Gold Representative :

CQC Representative:

<original signed by>

<original signed by>

PHOTOGRAPHS



Photo #: 1

Location of Sample EMRS-L2-S147
Moisture Content.



Photo #: 2

Packer packing CCL Lift 2 on Panel 3.



Photo #: 3

Location of Sample EMRS-L2-S148
Moisture Content.



Photo #: 4

Location of Sample EMRS-L2-S149
Moisture Content, Atterberg, Hydrometer.

PHOTOGRAPHS



Photo #: 5

Location of Sample EMRS-L2-S150
Moisture Content.



Photo #: 6

Location of Sample EMRS-L2-S151
Moisture Content.



Photo #: 7

Location of Sample EMRS-L2-S152
Moisture Content.



Photo #: 8

D8-1 dozer pushing NCL Lift 3 on Panel 3.

PHOTOGRAPHS



Photo #: 9

NCL Lift 3 material being placed on Panel 3.

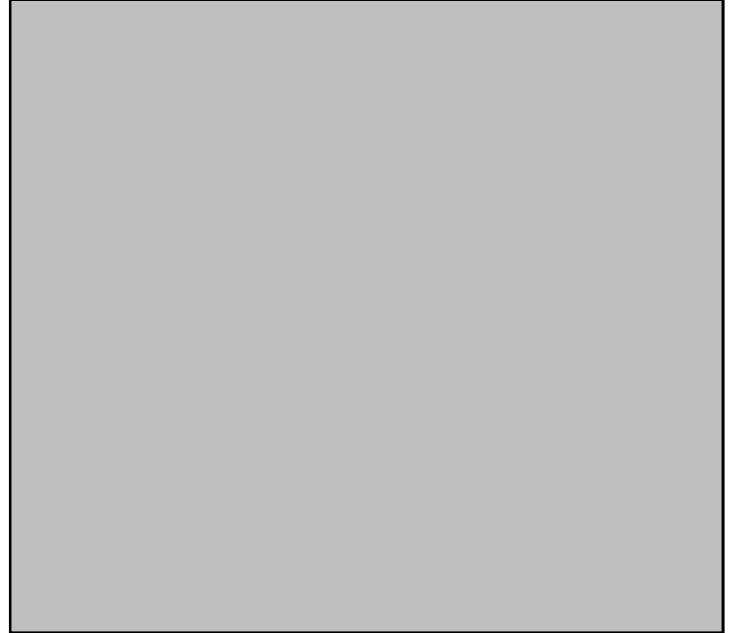


Photo #:



Photo #:



Photo #:

| | | | |
|---------------------|--------------|--------------------------|-----------------------|
| Date: | June 2, 2021 | Owner/Client: | New Gold Inc. |
| Day: | Wednesday | OKC Project #: | 1003-19 |
| Prepared by: | Brysin Shaw | Project Location: | Rainy River - Ontario |

Number of Pages in Report 5

Environmental Conditions:

| | | | | |
|-----------------------------|---------|-------|---------------|-----------|
| <u>Morning Conditions</u> | Weather | Clear | Precipitation | 0 mm |
| Temperature (High/Low) | 20 | 6 | Humidity | 60 to 80% |
| | | | Wind | Low |
| <u>Afternoon Conditions</u> | Weather | Clear | Precipitation | 0 mm |
| Temperature (High/Low) | 25 | 20 | Humidity | 20 to 40% |
| | | | Wind | Still |

Meeting Summaries

Following the proctor results from samples EMRS21-SP-105 and EMRS21-SP-106, CQA informed CQC that going forward we could try using a higher max density as long as we continued to complete control strips to confirm that appropriate compaction has been reached.

General Remarks

NG finished placing NCL Lift 3 on Panel 3 from STA 2+797 to 2+855, O/S -88m to 10 m.

NG also started excavating Key trench for Panel 4 from STA 2+779 to 2+793, O/S -2m to -1m and approximately 2m deep.

NG started to cut/grade the CCL L1 material placed on Panel 4 on May 31, 2021 and push excess material down the slope and to use when filling in the Key trench.

NG CAT349 excavator also continued to clean up the rock slope ahead of where we are pushing.

Description of CCL Material:

Dark brown with spots of light brown mixed in. Material seemed sticky and pliable. Could squish material the material between your fingers without fully apart. Material would roll in your hands and create a fairly thing string without breaking apart. The CCL material on Panel 4 had a very thin crust of dry material on top but underneath seemed to have adequate moisture content.

Panel Approval:

Panel Description

Panel 3 NCL Lift 3 was approved for Lift 4 placement. CCL Lift 1 on Panel 4 has not been completed yet.

| | Yes | No | Comment |
|---|--------------------------|-------------------------------------|---------|
| Material Inspection Suitable for Construction | <input type="checkbox"/> | <input checked="" type="checkbox"/> | |
| Visual Inspection | <input type="checkbox"/> | <input type="checkbox"/> | |
| Layer Thickness Acceptable | <input type="checkbox"/> | <input checked="" type="checkbox"/> | |
| Water Content within Acceptable Range | <input type="checkbox"/> | <input checked="" type="checkbox"/> | |
| Density within Acceptable Range | <input type="checkbox"/> | <input checked="" type="checkbox"/> | |
| Corrected Actions Taken | <input type="checkbox"/> | <input type="checkbox"/> | |

Testing and Sampling Completed:

Sample EMRS21-L3-S153
Moisture and hydrometer

Work Location and Task:

| Task Description | Location of Work | Equipment & Personnel Used |
|---------------------------|--------------------|----------------------------|
| Push and grade NCL Lift 3 | STA 2+797 to 2+855 | D8-1, D8-2, CAT 349 |
| Push and grade CCL Lift 1 | STA 2+762 to 2+797 | D8-1 & D8-2 |
| Excavate Key trench | STA 2+779 to 2+793 | CAT 349 |

Key-in Trench:

| Location | CCL Contact Material | Comment |
|--------------------|----------------------|-----------------|
| STA 2+779 to 2+793 | Sandy clay | Appox. 2m deep. |

By signing below I agree that the above statements are an accurate representation of the days events.

CQA / New Gold Representative :

<original signed by>

CQC Representative:

<original signed by>

PHOTOGRAPHS



Photo #: 1

D8 dozer pushing NCL Lift 3 on Panel 3.



Photo #: 2

D8 dozer pushing NCL Lift 3 on Panel 3.



Photo #: 3

Location of sample EMRS21-L3-S153
Moisture and hydrometer



Photo #: 4

D8-1 dozer grading NCL Lift 3 on Panel 3 while
D8-2 dozer starts to grade CCL Lift 1 on Panel 4.

PHOTOGRAPHS



Photo #: 5

CAT 349 excavator excavating key trench for Panel 4 from STA 2+779 to 2+793



Photo #: 6

D8-2 dozer grading CCL Lift 1 on Panel 4.



Photo #: 7

D8-2 dozer starting to fill in Key trench for Panel 4 at approximately STA 2+793.



Photo #:

| | | | |
|---------------------|--------------|--------------------------|-----------------------|
| Date: | June 3, 2021 | Owner/Client: | New Gold Inc. |
| Day: | Thursday | OKC Project #: | 1003-19 |
| Prepared by: | Brysin Shaw | Project Location: | Rainy River - Ontario |

Number of Pages in Report 6

Environmental Conditions:

Morning Conditions

Weather

Fair

Precipitation

0 - 5 mm

Temperature
(High/Low)

19

13

Humidity

80 to 100%

Wind

Still

Afternoon Conditions

Weather

Clear

Precipitation

0 mm

Temperature
(High/Low)

27

19

Humidity

40 to 60%

Wind

Still

Meeting Summaries

General Remarks

NG finished excavating Key trench for Panel 4 from STA 2+766 to 2+779, O/S -0.5m to -1.5m, approximately 2m deep.

NG completed placing and packing CCL Lift 1 on Panel 4. This lift was tested and approved.

NG also started placing NCL Lift 4 on Panel 3.

In field density tests were giving low compaction results but CQC and CQA felt like this had to do with the material having a higher moisture content.

Also, CQC started using a 1717 max density while testing the CCL Lift 1 on Panel 4 as the proctor results from the lab show that this was a more appropriate proctor to be using. Given that the optimum moisture content for a material with a max dry density of 1717 kg/m³ is 18.3%, I feel this explains the low in field compaction results.

Description of CCL Material:

Dark brown with spots of light brown material mixed in. Material was sticky and pliable and could be pressed between your fingers without falling apart. Material would roll in your hands and create a fairly thin string before breaking apart. Material did not seem to have an abundance of large rocks in it.

There was a couple wet spots where ice from the stock pile had melted and water was accumulating on the surface of the CCL but it was drying up fairly quickly.

Panel Approval:

Panel Description

CCL Lift 1 on Panel 4 approved from STA 2+762 to 2+797, O/S -88m to 1m.

| | Yes | No | Comment |
|---|-------------------------------------|--------------------------|---------|
| Material Inspection Suitable for Construction | <input checked="" type="checkbox"/> | <input type="checkbox"/> | |
| Visual Inspection | <input checked="" type="checkbox"/> | <input type="checkbox"/> | |
| Layer Thickness Acceptable | <input checked="" type="checkbox"/> | <input type="checkbox"/> | |
| Water Content within Acceptable Range | <input checked="" type="checkbox"/> | <input type="checkbox"/> | |
| Density within Acceptable Range | <input checked="" type="checkbox"/> | <input type="checkbox"/> | |
| Corrected Actions Taken | <input type="checkbox"/> | <input type="checkbox"/> | |

Testing and Sampling Completed:

Sample EMRS21-L1-S154
Moisture content.
Sample EMRS21-L1-S155
Moisture content, Atterberg, and hydrometer.
Sample EMRS21-L1-S156
Moisture content.
Sample EMRS21-L1-S157
Moisture content.
Sample EMRS21-L1-S158
Moisture content.

Work Location and Task:

| Task Description | Location of Work | Equipment & Personnel Used |
|-----------------------|--------------------|----------------------------|
| Place CCL Lift 1 | STA 2+762 to 2+797 | D8-1 and D8-2 |
| Packing CCL Lift 1 | STA 2+762 to 2+797 | Packer |
| Excavating key trench | 2+766 to 2+779 | CAT 349 |

Key-in Trench:

| Location | CCL Contact Material | Comment |
|----------------|----------------------|-----------------|
| 2+766 to 2+779 | Sandy clay | Approx. 2m deep |

By signing below I agree that the above statements are an accurate representation of the days events.

CQA / New Gold Representative :
<original signed by>

CQC Representative:
<original signed by>

PHOTOGRAPHS



Photo #: 1

Key Trench for Panel 4 from STA 2+766 to 2+779.



Photo #: 2

D8 dozer filling in Key trench at STA 2+766 to 2+779.



Photo #: 3

Packer packing CCL Lift 1 on Panel 4.



Photo #: 4

Completed CCL Lift 1 on Panel 4.

PHOTOGRAPHS



Photo #: 5

Wet spot on top of CCL material on Panel 4.



Photo #: 6

Sample EMRS21-L1-S154
Moisture content.



Photo #: 7

Sample EMRS21-L1-S155
Moisture content, Atterberg, and hydrometer.



Photo #: 8

Sample EMRS21-L1-S156
Moisture content.

PHOTOGRAPHS



Photo #: 9

Sample EMRS21-L1-S157
Moisture content.



Photo #: 10

Sample EMRS21-L1-S158
Moisture content.



Photo #: 11

NGC wiggle dumping NCL Lift 4 material on slope of Panel 3.



Photo #: 12

D8 dozer pushing CCL Lift 2 on Panel 4.

| | | | |
|---------------------|--------------|--------------------------|-----------------------|
| Date: | June 4, 2021 | Owner/Client: | New Gold Inc. |
| Day: | Friday | OKC Project #: | 1003-19 |
| Prepared by: | Brysin Shaw | Project Location: | Rainy River - Ontario |

Number of Pages in Report 5

Environmental Conditions:

Morning Conditions

Weather

Clear

Precipitation

0 mm

Temperature
(High/Low)

26

11

Humidity

60 to 80%

Wind

Low

Afternoon Conditions

Weather

Clear

Precipitation

0 mm

Temperature
(High/Low)

35

26

Humidity

20 to 40%

Wind

High

Meeting Summaries

Completed another test strip on CCL Lift 2 on Panel 4 to see if material is being adequately compacted when completing two passes with the packer instead of four. Test results proved that two passes continues to be adequate and CQA gave the okay to continue using two passes until proven otherwise.

General Remarks

NG continued to place and grade NCL Lift 4 on Panel 3.

NG finished placing CCL Lift 2 on Panel 4. This lift was tested and approved.

After completion of CCL Lift 2, NG started placing NCL Lift 3 on Panel 4.

Description of CCL Material:

Dark brown with a few spots of light brown mixed in. Material was sticky and pliable and could be pressed between your fingers without falling apart. Material did not seem to have an abundance of large rocks in it.

The outer layer of the material started to dry out quickly but when density testing took place, most of the results came back with high moisture contents.

Panel Approval:

Panel Description

CCL Lift 2 on Panel 4 from , O/S -87m to 1m.

| | Yes | No | Comment |
|---|-------------------------------------|--------------------------|---------|
| Material Inspection Suitable for Construction | <input checked="" type="checkbox"/> | <input type="checkbox"/> | |
| Visual Inspection | <input checked="" type="checkbox"/> | <input type="checkbox"/> | |
| Layer Thickness Acceptable | <input checked="" type="checkbox"/> | <input type="checkbox"/> | |
| Water Content within Acceptable Range | <input checked="" type="checkbox"/> | <input type="checkbox"/> | |
| Density within Acceptable Range | <input checked="" type="checkbox"/> | <input type="checkbox"/> | |
| Corrected Actions Taken | <input type="checkbox"/> | <input type="checkbox"/> | |

Testing and Sampling Completed:

Sample EMRS21-L2-S159
Moisture content, Atterberg, and Hydrometer.
Sample EMRS21-L2-S160
Moisture content.
Sample EMRS21-L2-S161
Moisture content.
Sample EMRS21-L2-S162
Moisture content.
Sample EMRS21-L2-S163
Moisture content.

Work Location and Task:

| Task Description | Location of Work | Equipment & Personnel Used |
|----------------------------|------------------|----------------------------|
| Place and grade NCL Lift 4 | Panel 3 | D8-1 & D8-2 |
| Place and grade CCL Lift 2 | Panel 4 | D8-1 & D8-2 |
| Pack CCL Lift 2 | Panel 4 | Packer |

Key-in Trench:

| Location | CCL Contact Material | Comment |
|----------|----------------------|---------|
|----------|----------------------|---------|

By signing below I agree that the above statements are an accurate representation of the days events.

CQA / New Gold Representative :

<original signed by>

CQC Representative:

<original signed by>

PHOTOGRAPHS



Photo #: 1

CCL Lift 2 on Panel 4.



Photo #: 2

D8 dozers pushing and grading NCL Lift 4 on Panel 3.



Photo #: 3

Location of sample EMRS21-L2-S159
Moisture content, Atterberg, and Hydrometer.



Photo #: 4

Location of sample EMRS21-L2-S160
Moisture content.

PHOTOGRAPHS



Photo #: 5

Location of sample EMRS21-L2-S161
Moisture content.



Photo #: 6

Location of sample EMRS21-L2-S162
Moisture content.



Photo #: 7

Location of sample EMRS21-L2-S163
Moisture content.



Photo #: 8

Completing a test strip on CCL Lift 2, Panel 4.

| | | | |
|---------------------|--------------|--------------------------|-----------------------|
| Date: | June 5, 2021 | Owner/Client: | New Gold Inc. |
| Day: | Saturday | OKC Project #: | 1003-19 |
| Prepared by: | Brysin Shaw | Project Location: | Rainy River - Ontario |

Number of Pages in Report 5

Environmental Conditions:

Morning Conditions

Weather

Clear

Precipitation

0 mm

Temperature
(High/Low)

24

17

Humidity

80 to 100%

Wind

Still

Afternoon Conditions

Weather

Clear

Precipitation

0 mm

Temperature
(High/Low)

32

24

Humidity

60 to 80%

Wind

Low

Meeting Summaries

Had a discussion with NG about how much cover material should be placed over the instrumentation burrito at the bottom of the slope in Panel 3. Was advised that we would place the full 1.5m of cover but would placed and bucket packed with the excavator as they did not want any equipment driving on the burrito. CQA was okay with this decision.

General Remarks

NG continued placing and grading NCL Lift 4 on Panel 3.

NG finished placing NCL Lift 3 on Panel 4. This lift was approved for placement of lift 4.

NG started bulk placing CCL Lift 1 on Panel 5. The material in the bottom of the stockpile still has frost in it so by bulk placing it gives the material some time to dry out without becoming desiccated.

Description of CCL Material:

No CCL material placed today. CCL material that was bulk placed on Panel 5 was dark brown and seemed like adequate CCL material but visually had a higher moisture content with junks of frozen material mixed in.

Panel Approval:

Panel Description

Panel 5: STA 2+722 to 2+762

| | Yes | No | Comment |
|---|--------------------------|-------------------------------------|---------|
| Material Inspection Suitable for Construction | <input type="checkbox"/> | <input checked="" type="checkbox"/> | |
| Visual Inspection | <input type="checkbox"/> | <input checked="" type="checkbox"/> | |
| Layer Thickness Acceptable | <input type="checkbox"/> | <input checked="" type="checkbox"/> | |
| Water Content within Acceptable Range | <input type="checkbox"/> | <input checked="" type="checkbox"/> | |
| Density within Acceptable Range | <input type="checkbox"/> | <input checked="" type="checkbox"/> | |
| Corrected Actions Taken | <input type="checkbox"/> | <input type="checkbox"/> | |

Testing and Sampling Completed:

Sample EMRS21-L4-S164
Moisture content and Hydrometer.
Sample EMRS21-L3-S165
Moisture content.

Work Location and Task:

| Task Description | Location of Work | Equipment & Personnel Used |
|----------------------------|------------------------|----------------------------|
| Place and grade NCL Lift 4 | Panel 3 | D8-1, D8-2, CAT349 |
| Place and grade NCL Lift 3 | Panel 4 | D8-1, D8-2, CAT349 |
| Bulk place CCL Lift 1 | P5, STA 2+722 to 2+762 | D8-1, D8-2, CAT349 |

Key-in Trench:

| Location | CCL Contact Material | Comment |
|----------|----------------------|---------|
|----------|----------------------|---------|

By signing below I agree that the above statements are an accurate representation of the days events.

CQA / New Gold Representative :

CQC Representative:

<original signed by>

<original signed by>

PHOTOGRAPHS

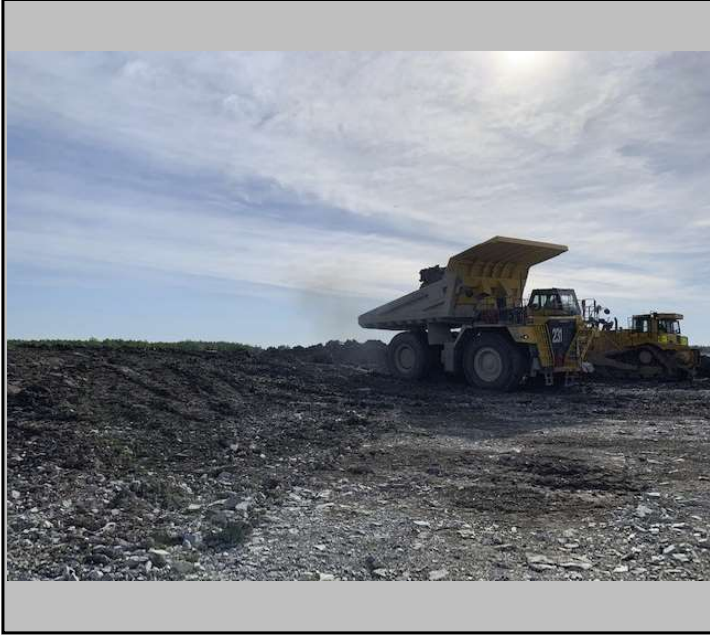


Photo #: 1

NGC 231 truck dumping NCL Material on slope.



Photo #: 2

Location of sample EMRS21-L4-S164
Moisture content and hydrometer.

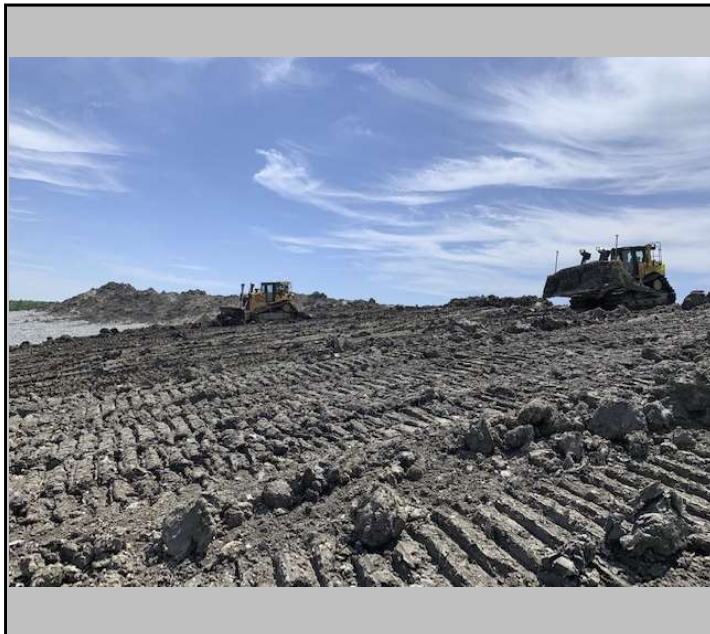


Photo #: 3

D8 dozers grading NCL Lift 3 on Panel 4



Photo #: 4

Finished Lift 3 on Panel 4.

PHOTOGRAPHS



Photo #: 5

D8 dozers bulk placing CCL Lift 1 on Panel 5.



Photo #: 6

Location of sample EMRS21-L3-S165,
Moisture content.



Photo #:



Photo #:

| | | | |
|---------------------|--------------|--------------------------|-----------------------|
| Date: | June 6, 2021 | Owner/Client: | New Gold Inc. |
| Day: | Sunday | OKC Project #: | 1003-19 |
| Prepared by: | Brysin Shaw | Project Location: | Rainy River - Ontario |

Number of Pages in Report

Environmental Conditions:

Morning Conditions

Weather

Clear

Precipitation

0 mm

Temperature
(High/Low)

27

19

Humidity

60 to 80%

Wind

Still

Afternoon Conditions

Weather

Cloudy

Precipitation

0 - 5 mm

Temperature
(High/Low)

32

27

Humidity

20 to 40%

Wind

High

Meeting Summaries

General Remarks

NG placed more material over the burrito in Panel 3 so that it had a minimum of 1.5m of coverage. This material was bucket packed with the excavator as NG did not want a packer driving on the burrito.

NG finished placing and grading NCL Lift 4 on Panel 3 from STA 2+797 to 2+855, O/S -87m to 6m. This lift has been picked up.

NG continued placing NCL Lift 4 on Panel 4. This panel is almost complete.

NG also pushed and graded CCL Lift 1 on Panel 5 from STA 2+722 to 2+762, O/S -87m to -18m. This lift has not been packed as the material is still to wet.

Description of CCL Material:

CCL material was dark brown with light brown spots mixed in. Material was pliable and could be rolled out to form a ribbon in your hands. Visually the material seemed to have a low abundance of large rocks mixed in. Even though material was bulk placed yesterday to dry out it still visually had a high moisture content today.

Panel Approval:

Panel Description

Panel 5: STA 2+722 to 2+762

| | Yes | No | Comment |
|---|--------------------------|-------------------------------------|---------|
| Material Inspection Suitable for Construction | <input type="checkbox"/> | <input checked="" type="checkbox"/> | |
| Visual Inspection | <input type="checkbox"/> | <input checked="" type="checkbox"/> | |
| Layer Thickness Acceptable | <input type="checkbox"/> | <input checked="" type="checkbox"/> | |
| Water Content within Acceptable Range | <input type="checkbox"/> | <input checked="" type="checkbox"/> | |
| Density within Acceptable Range | <input type="checkbox"/> | <input checked="" type="checkbox"/> | |
| Corrected Actions Taken | <input type="checkbox"/> | <input type="checkbox"/> | |

Testing and Sampling Completed:

Sample EMRS21-L4-S165
Moisture content.

Work Location and Task:

Task Description

Location of Work

Equipment & Personnel Used

Key-in Trench:

Location

CCL Contact Material

Comment

By signing below I agree that the above statements are an accurate representation of the days events.

CQA / New Gold Representative :

CQC Representative:

<original signed by>

<original signed by>

PHOTOGRAPHS



Photo #: 1

NGC CAT349 excavator working to place more cover material on burrito in P3.



Photo #: 2

Burrito in P3 after more cover material was added and bucket packed.



Photo #: 3

D8 dozer pushing NCL Lift 4 material on Panel 4.

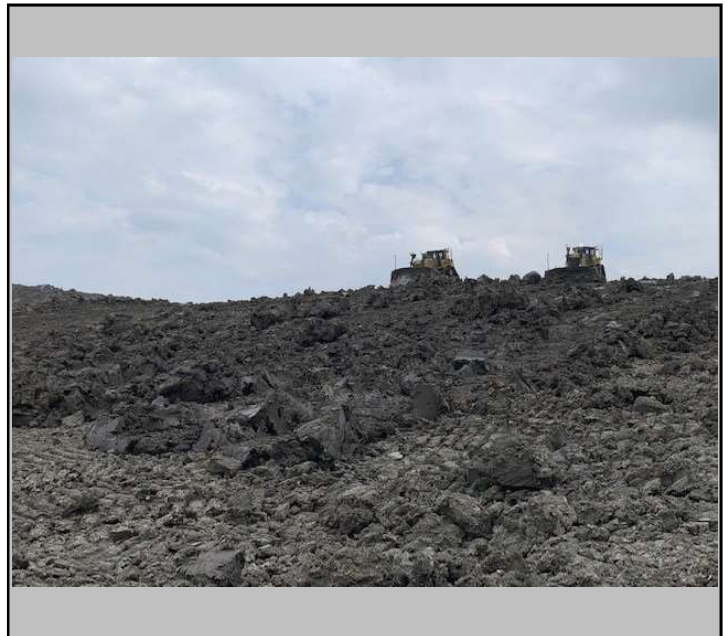


Photo #: 4

D8 dozers pushing NCL Lift 4 material on Panel 4.

PHOTOGRAPHS



Photo #: 5

CCL Lift 1 material on placed on Panel 5.



Photo #: 6

Location of sample EMRS21-L4-S165,
moisture content.



Photo #:



Photo #:

| | | | |
|---------------------|--------------|--------------------------|-----------------------|
| Date: | June 7, 2021 | Owner/Client: | New Gold Inc. |
| Day: | Monday | OKC Project #: | 1003-19 |
| Prepared by: | Brysin Shaw | Project Location: | Rainy River - Ontario |

Number of Pages in Report 5

Environmental Conditions:

| | | | | |
|-----------------------------|---------|-------|---------------|-----------|
| <u>Morning Conditions</u> | Weather | Clear | Precipitation | 0 mm |
| Temperature (High/Low) | 23 | 12 | Humidity | 60 to 80% |
| | | | Wind | Low |
| <u>Afternoon Conditions</u> | Weather | Clear | Precipitation | 0 mm |
| Temperature (High/Low) | 28 | 23 | Humidity | 20 to 40% |
| | | | Wind | Low |

Meeting Summaries

General Remarks

NG excavated key trench from 2+723 to 2+748, 1m wide and approximately 1.5-2m deep.

NG finished placing and packing CCL Lift 1 on Panel 5. This lift is ready for testing and approval.

NG continued to work on NCL Lift 4, Panel 4.

NG bulk placed CCL Lift 1 on panel 6. This is to let the material dry out a bit prior to grading.

Description of CCL Material:

CCL material was dark brown with light brown spots mixed in. Material was pliable and could be rolled out to form a ribbon in your hands. Visually the material seemed to have a low abundance of large rocks mixed in. Material visually had a higher moisture content but will have time to dry out more over night.

Panel Approval:

Panel Description

Panel 5: STA 2+722 to 2+762, O/S -87m to 0m.

| | Yes | No | Comment |
|---|--------------------------|-------------------------------------|---------|
| Material Inspection Suitable for Construction | <input type="checkbox"/> | <input checked="" type="checkbox"/> | |
| Visual Inspection | <input type="checkbox"/> | <input checked="" type="checkbox"/> | |
| Layer Thickness Acceptable | <input type="checkbox"/> | <input checked="" type="checkbox"/> | |
| Water Content within Acceptable Range | <input type="checkbox"/> | <input checked="" type="checkbox"/> | |
| Density within Acceptable Range | <input type="checkbox"/> | <input checked="" type="checkbox"/> | |
| Corrected Actions Taken | <input type="checkbox"/> | <input type="checkbox"/> | |

Testing and Sampling Completed:

No samples were taken today.

Work Location and Task:

| Task Description | Location of Work | Equipment & Personnel Used |
|----------------------------|------------------|----------------------------|
| Push and graded CCL Lift 1 | Panel 5 | D8-1 and D8-2 |
| Push and grade NCL Lift 4 | Panel 4 | D8-1 and D8-2 |
| Pack CCL Lift 1 | Panel 5 | Packer |

Key-in Trench:

| Location | CCL Contact Material | Comment |
|----------------|----------------------|---------------------------|
| 2+723 to 2+748 | bedrock and/ or clay | approximately 1.5-2m deep |

By signing below I agree that the above statements are an accurate representation of the days events.

CQA / New Gold Representative :

Digitally signed by Garry Nona

<original signed by>

CQC Representative:

Digitally signed by Brian Shaw

<original signed by>

PHOTOGRAPHS



Photo #: 1

NGC 100 ton truck delivering material.



Photo #: 2

CAT349 excavator excavating key trench for Panel 5.



Photo #: 3

Key trench excavated from



Photo #: 4

D8 dozers grading NCL Lift 4 on Panel 4.

PHOTOGRAPHS



Photo #: 5

Finished CCL Lift 1 on Panel 5 ready for approval.

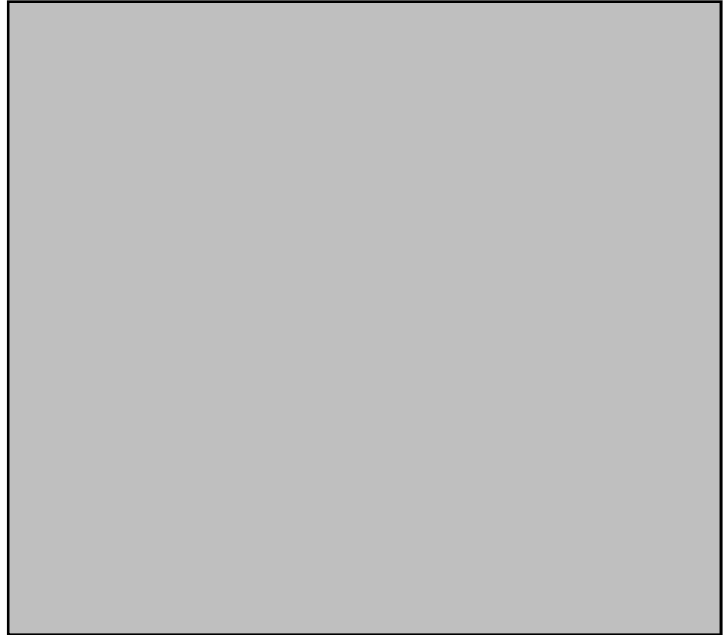


Photo #:



Photo #:



Photo #:

| | | | |
|---------------------|--------------|--------------------------|-----------------------|
| Date: | June 8, 2021 | Owner/Client: | New Gold Inc. |
| Day: | Tuesday | OKC Project #: | 1003-19 |
| Prepared by: | Martin Moore | Project Location: | Rainy River - Ontario |

Number of Pages in Report

Environmental Conditions:

Morning Conditions

Weather

Showers

Precipitation

0 - 5 mm

Temperature
(High/Low)

24

17

Humidity

80 to 100%

Wind

Still

Afternoon Conditions

Weather

Cloudy

Precipitation

0 mm

Temperature
(High/Low)

29

24

Humidity

40 to 60%

Wind

Low

Meeting Summaries

Okane and Tulloch discussed Panel 5 CCL Lift 1 density and moisture results. All density and moisture results were consistent and fell within specifications for other proctors than the one being used today. Okane and Tulloch agreed the results were sufficient and agreed to begin placing CCL Lift 2.

General Remarks

NG and Tulloch completed 5 tests on Panel 5 CCL Lift 1.

NG continued bulk placing CCL Lift 1 for Panel 6 from 2+722 to 2+682..

NG placed CCL Lift 2 for Panel 5 to cover Lift 1 in 24 hours.

Tulloch surveyed Panel 4 NCL Lift 4, Panel 5 CCL Lift 1, Panel 5 CCL Lift 2 placement and Panel 6 CCL Lift 1 bulk placement.

NG completed Test Pits for Okane on the south section of the EMRS.

Description of CCL Material:

CCL material was dark grey with some dark and light brown spots mixed in. Material was pliable and could be rolled out to form a ribbon in your hands. Visually the material seemed to have a low abundance of large rocks mixed in.

Panel Approval:

Panel Description

Panel 5: STA 2+722 to 2+762, O/S -87m to 0m.

| | Yes | No | Comment |
|---|-------------------------------------|--------------------------|---------|
| Material Inspection Suitable for Construction | <input checked="" type="checkbox"/> | <input type="checkbox"/> | |
| Visual Inspection | <input checked="" type="checkbox"/> | <input type="checkbox"/> | |
| Layer Thickness Acceptable | <input checked="" type="checkbox"/> | <input type="checkbox"/> | |
| Water Content within Acceptable Range | <input checked="" type="checkbox"/> | <input type="checkbox"/> | |
| Density within Acceptable Range | <input checked="" type="checkbox"/> | <input type="checkbox"/> | |
| Corrected Actions Taken | <input type="checkbox"/> | <input type="checkbox"/> | |

Testing and Sampling Completed:

Density reading EMRS21-L1-D56 and Moisture sample EMRS21-L1-S167.
 Density reading EMRS21-L1-D57 and Moisture sample EMRS21-L1-S168.
 Density reading EMRS21-L1-D58 and Moisture sample EMRS21-L1-S169.
 Density reading EMRS21-L1-D59 and Moisture sample EMRS21-L1-S170.
 Density reading EMRS21-L1-D60 and Moisture sample EMRS21-L1-S171.

Reference EMRS Tracking Summary for further information.

Work Location and Task:

| Task Description | Location of Work | Equipment & Personnel Used |
|----------------------------|------------------|----------------------------|
| Place and grade CCL Lift 2 | Panel 5 | D8-1 and D8-2. |
| Bulk place CCL Lift 1 | Panel 6 | D8-1 |

Key-in Trench:

| Location | CCL Contact Material | Comment |
|----------|----------------------|---------|
|----------|----------------------|---------|

By signing below I agree that the above statements are an accurate representation of the days events.

CQA / New Gold Representative :

CQC Representative:

<original signed by>

<original signed by>

PHOTOGRAPHS



Photo #: 1

EMRS21-L1-D56.



Photo #: 2

EMRS21-L1-S167.



Photo #: 3

EMRS21-L1-D57.

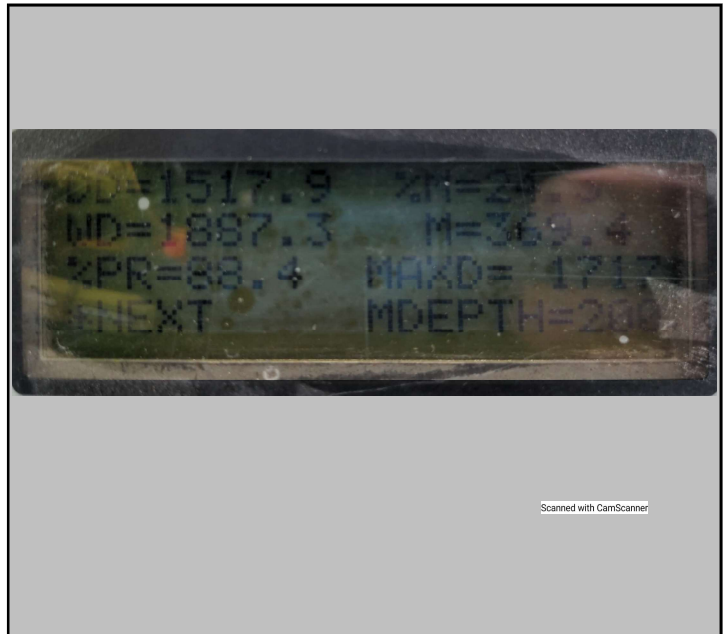


Photo #: 4

EMRS21-L1-D57.



Photo #: 5

EMRS21-L1-S168.



Photo #: 6

EMRS21-L1-S169.



Photo #: 7

EMRS21-L1-D59.



Photo #: 8

EMRS21-L1-S170.

PHOTOGRAPHS

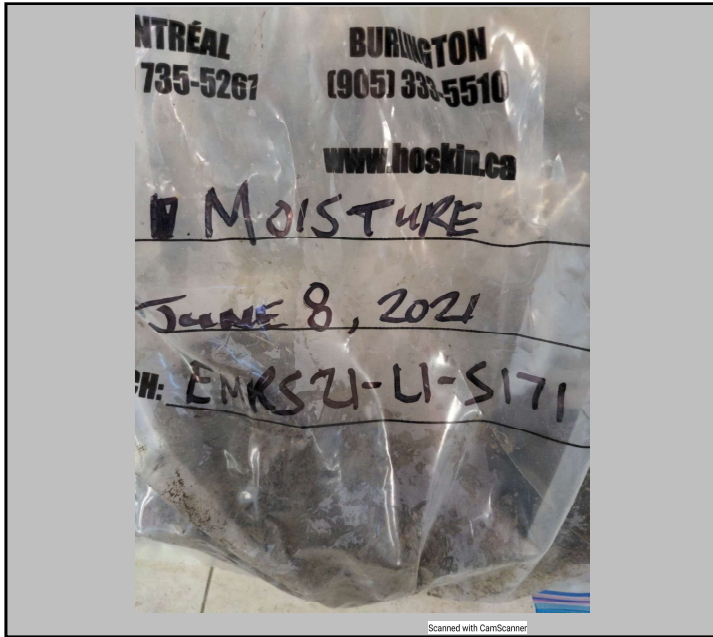


Photo #: 9

EMRS21-L1-S171.



Photo #: 10

Okane test pit.



Photo #: 11

Panel 5 CCL Lift 2 and Panel 6 CCL Lift 1.



Photo #:

| | | | |
|---------------------|--------------|--------------------------|-----------------------|
| Date: | June 9, 2021 | Owner/Client: | New Gold Inc. |
| Day: | Wednesday | OKC Project #: | 1003-19 |
| Prepared by: | Martin Moore | Project Location: | Rainy River - Ontario |

Number of Pages in Report 7

Environmental Conditions:

Morning Conditions

Weather

Cloudy

Precipitation

0 mm

Temperature
(High/Low)

26

18

Humidity

60 to 80%

Wind

Low

Afternoon Conditions

Weather

Rain

Precipitation

5 - 10 mm

Temperature
(High/Low)

32

22

Humidity

80 to 100%

Wind

High

Meeting Summaries

Okane and Tulloch discussed Panel 5 CCL Lift 2 density and moisture results. All density and moisture results were consistent and fell within specifications for other proctors than the one being used today. Okane and Tulloch agreed the results were good and approved to begin placing NCL Lift 3 for Panel 5.

General Remarks

NG completed placing and packing Panel 5 CCL Lift 2. Testing and sampling completed. Panel approved and survey completed prior to NG beginning NCL Lift 3 placement.

NG placing and grading Panel 6 CCL Lift 1.

NG completed Key Trench to for Panel 6. Tulloch surveyed.

NG excavated test pits for Okane to complete tests on the south side of the EMRS.

NG loading and hauling material to Panel 5 for NCL Lifts 3 and 4.

Description of CCL Material:

CCL material was dark grey/brown with some light brown spots mixed in. Material was pliable and could be rolled out to form a ribbon in your hands. Visually the material seemed to have a low abundance of large rocks mixed in.

Panel Approval:

Panel Description

Panel 5: STA 2+722 to 2+762, O/S -87m to 0m.

| | Yes | No | Comment |
|---|-------------------------------------|--------------------------|---------|
| Material Inspection Suitable for Construction | <input checked="" type="checkbox"/> | <input type="checkbox"/> | |
| Visual Inspection | <input checked="" type="checkbox"/> | <input type="checkbox"/> | |
| Layer Thickness Acceptable | <input checked="" type="checkbox"/> | <input type="checkbox"/> | |
| Water Content within Acceptable Range | <input checked="" type="checkbox"/> | <input type="checkbox"/> | |
| Density within Acceptable Range | <input checked="" type="checkbox"/> | <input type="checkbox"/> | |
| Corrected Actions Taken | <input type="checkbox"/> | <input type="checkbox"/> | |

Testing and Sampling Completed:

Samples
 EMRS21-P5-L2-S172 Moisture, Hydrometer, Atterburg.
 EMRS21-P5-L2-S173 Moisture, Hydrometer, Atterburg.
 EMRS21-P5-L2-S174 Moisture.
 EMRS21-P5-L2-S175 Moisture.
 EMRS21-P5-L2-S176 Moisture.
 EMRS21-P5-L2-S177 Moisture.
 EMRS21-P5-L2-S178 Moisture.
 Density Readings
 EMRS21-P5-L2-D61-D67.
 Reference EMRS Tracking Summary and Density Report.

Work Location and Task:

| Task Description | Location of Work | Equipment & Personnel Used |
|--------------------------------|------------------------|----------------------------|
| CCL lift 2 placement & grading | Panel 5 2+762 to 2+722 | D8-2 |
| CCL lift 1 placement & grading | Panel 6 2+722 to 2+682 | D8-1 and D8-2 |
| NCL lift 3 placement | Panel 5 2+762 to 2+722 | D8-1 |

Key-in Trench:

| Location | CCL Contact Material | Comment |
|------------------------|----------------------|------------------------|
| Panel 6 2+723 to 2+682 | Bedrock | Bedrock at the surface |

By signing below I agree that the above statements are an accurate representation of the days events.

CQA / New Gold Representative :

<original signed by>

CQC Representative:

<original signed by>

PHOTOGRAPHS

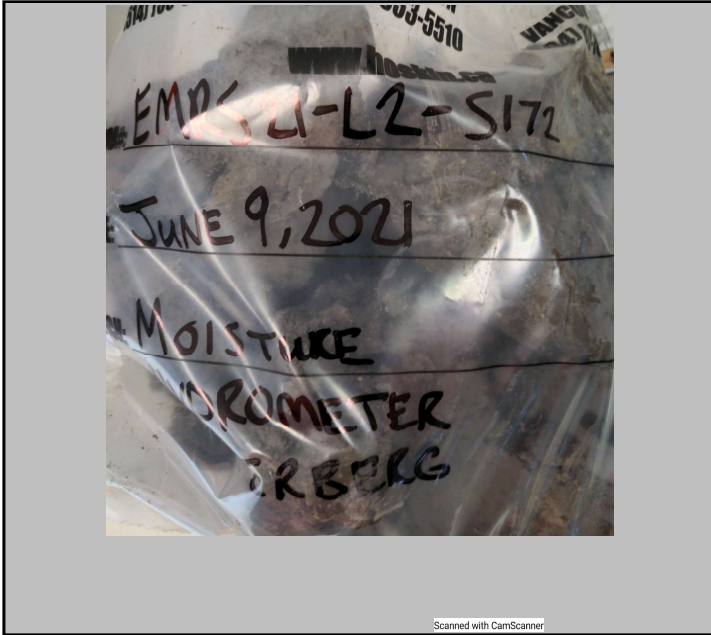


Photo #: 1

EMRS21-P5-L2-S172.

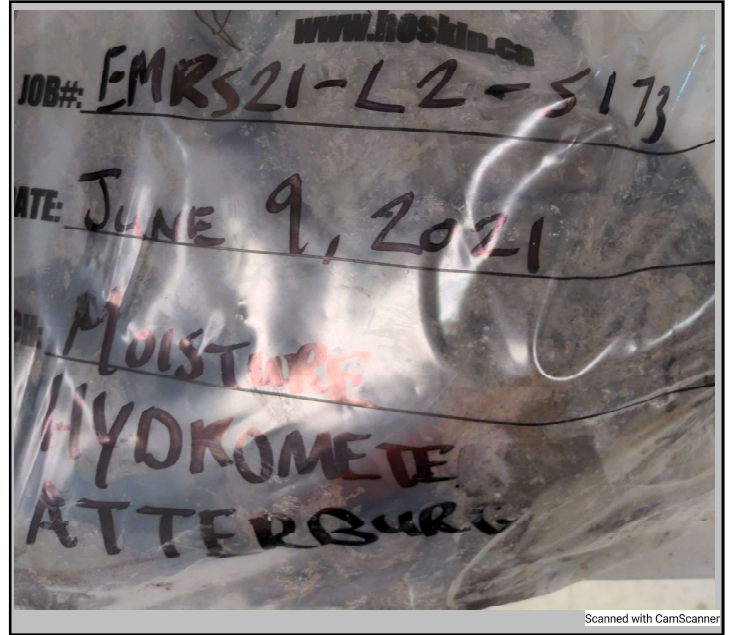


Photo #: 2

EMRS21-P5-L2-S173.



Photo #: 3

Key Trench 2+723 to 2+622



Photo #: 4

D8-2 placing and grading Panel 6 CCL Lift 1.

PHOTOGRAPHS

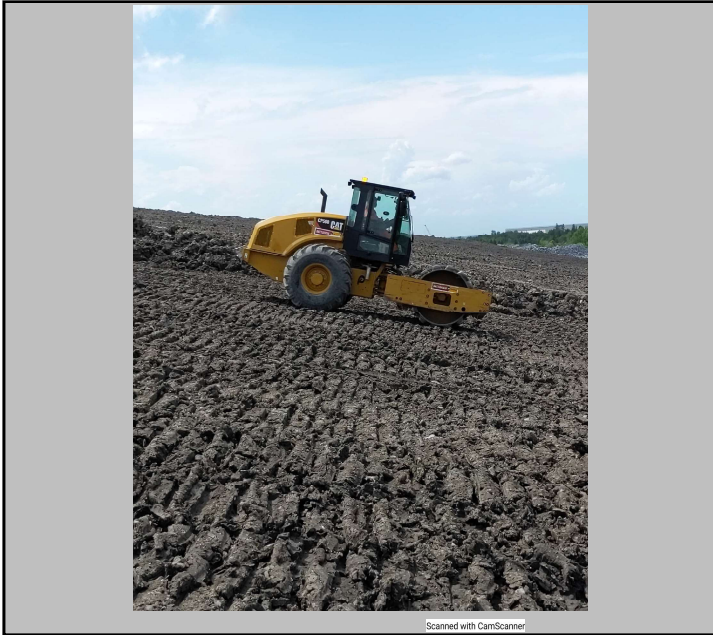


Photo #: 5

Packing Panel 5 CCL Lift 2.

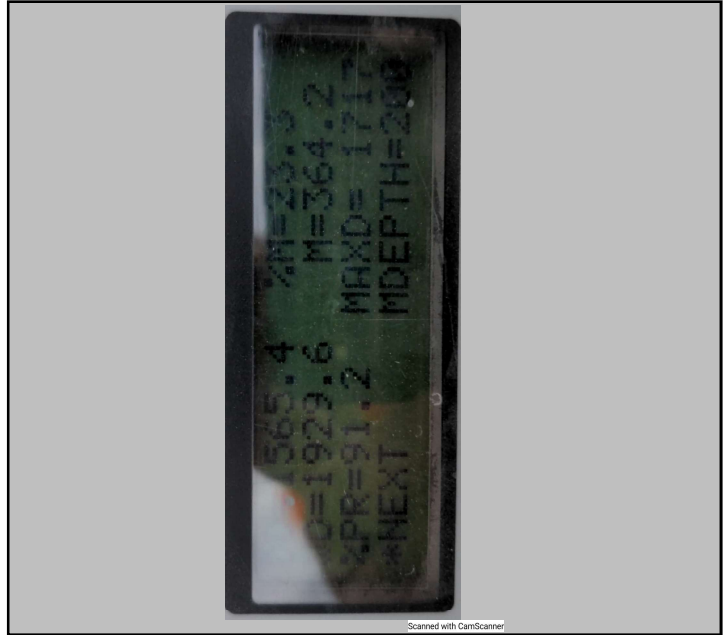


Photo #: 6

EMRS21-P5-L2-D61.



Photo #: 7

EMRS21-P5-L2-S174.

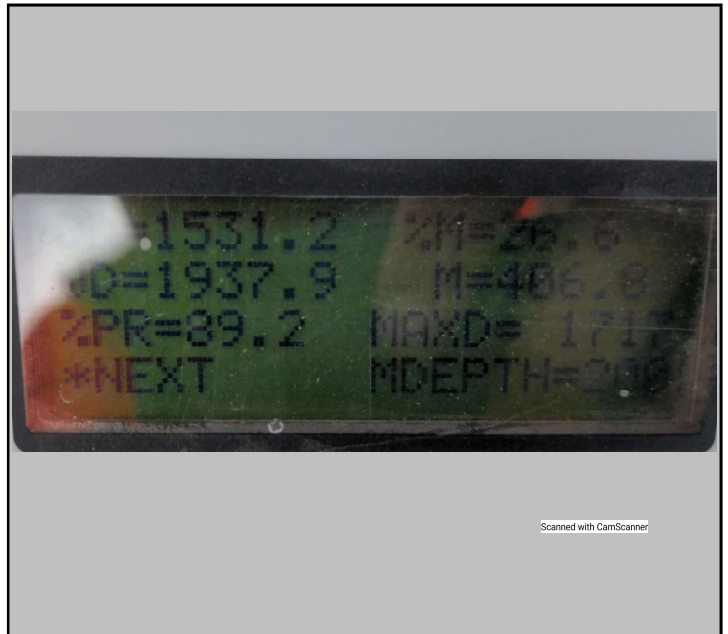


Photo #: 8

EMRS21-P5-L2-D62.

PHOTOGRAPHS



Photo #: 9

EMRS21-P5-L2-S175.

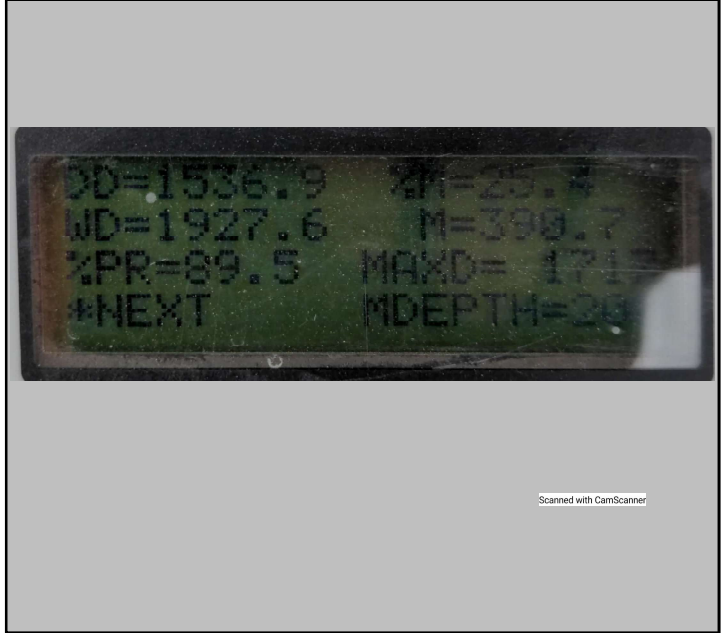


Photo #: 10

EMRS21-P5-L2-D63.



Photo #: 11

EMRS21-P5-L2-S176.

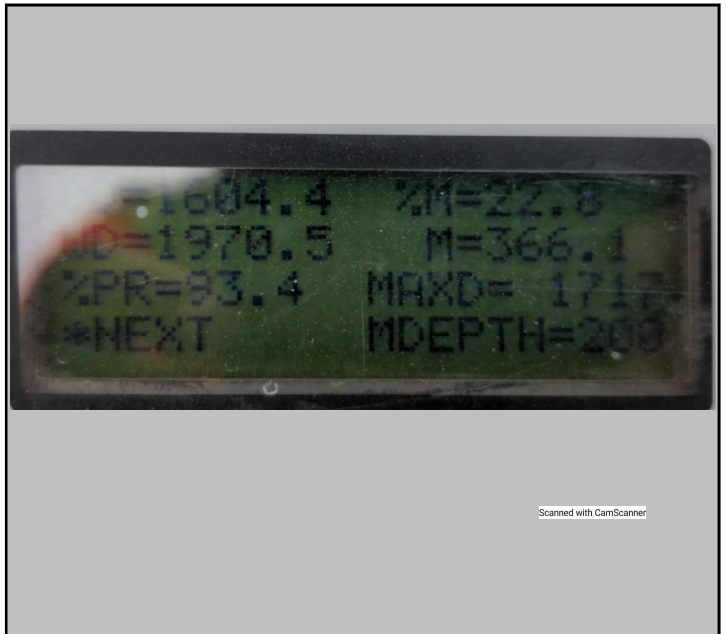
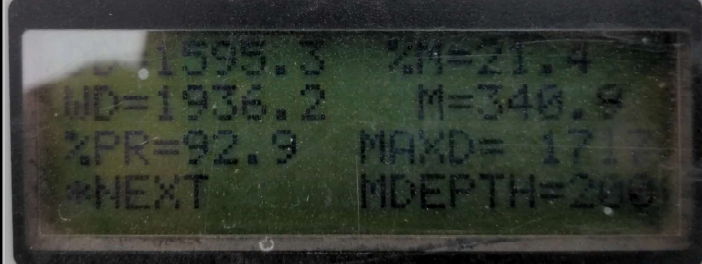


Photo #: 12

EMRS21-P5-L2-D64.

PHOTOGRAPHS



Scanned with CamScanner

Photo #: 13

EMRS21-P5-L2-D65.



Scanned with CamScanner

Photo #: 14

EMRS21-P5-L2-S177.



Scanned with CamScanner

Photo #: 15

EMRS21-P5-L2-D67.



Scanned with CamScanner

Photo #:

| | | | |
|---------------------|---------------|--------------------------|-----------------------|
| Date: | June 10, 2021 | Owner/Client: | New Gold Inc. |
| Day: | Thursday | OKC Project #: | 1003-19 |
| Prepared by: | Martin Moore | Project Location: | Rainy River - Ontario |

Number of Pages in Report 5

Environmental Conditions:

Morning Conditions

Weather

Fair

Precipitation

0 mm

Temperature
(High/Low)

24

18

Humidity

80 to 100%

Wind

Still

Afternoon Conditions

Weather

Fair

Precipitation

0 mm

Temperature
(High/Low)

26

24

Humidity

60 to 80%

Wind

Low

Meeting Summaries

Heavy rain storm left material visually wet and difficult for the dozers to work with.

General Remarks

NG placing Panel 5 NCL Lift 3 to cover Lift 2.

NG hauling material from burrow pit and from stockpiles.

NG removing oversize rock and material with lots of rock from the stockpiles.

Panel 6 CCL Lift 1 required drying due to being visually wet from the heavy rain storm.

Description of CCL Material:

No CCL material placed today. Panel 6 CCL Lift 1 that was bulk placed was dark brown and is adequate material but visually wet from heavy rain storm over night and difficult to work with.

Panel Approval:

Panel Description

Panel 6: 2+722 to 2+682

| | Yes | No | Comment |
|---|--------------------------|-------------------------------------|---------------|
| Material Inspection Suitable for Construction | <input type="checkbox"/> | <input checked="" type="checkbox"/> | |
| Visual Inspection | <input type="checkbox"/> | <input checked="" type="checkbox"/> | Visually wet. |
| Layer Thickness Acceptable | <input type="checkbox"/> | <input checked="" type="checkbox"/> | |
| Water Content within Acceptable Range | <input type="checkbox"/> | <input type="checkbox"/> | |
| Density within Acceptable Range | <input type="checkbox"/> | <input type="checkbox"/> | |
| Corrected Actions Taken | <input type="checkbox"/> | <input type="checkbox"/> | |

Testing and Sampling Completed:

No samples or testing completed today.

Work Location and Task:

| Task Description | Location of Work | Equipment & Personnel Used |
|----------------------|------------------------|----------------------------|
| NCL Lift 3 placement | Panel 5 2+762 to 2+722 | D8-1 and D8-2 |

Key-in Trench:

| Location | CCL Contact Material | Comment |
|----------|----------------------|---------|
|----------|----------------------|---------|

By signing below I agree that the above statements are an accurate representation of the days events.

CQA / New Gold Representative :

<original signed by>

CQC Representative:

<original signed by>

PHOTOGRAPHS

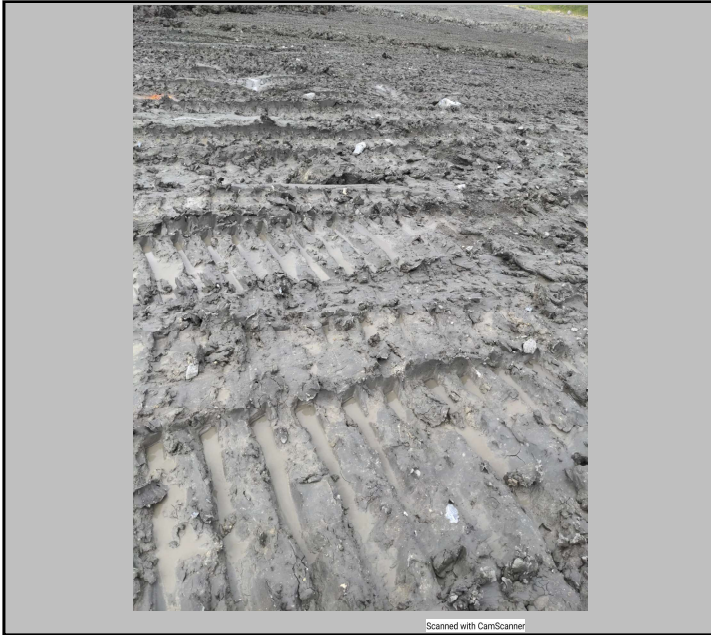


Photo #: 1

Panel 6 CCL Lift 1, Visually wet.



Photo #: 2

D8-2 placing Panel 5 NCL Lift 3.



Photo #: 3

Panel 5 NCL Lift 3.

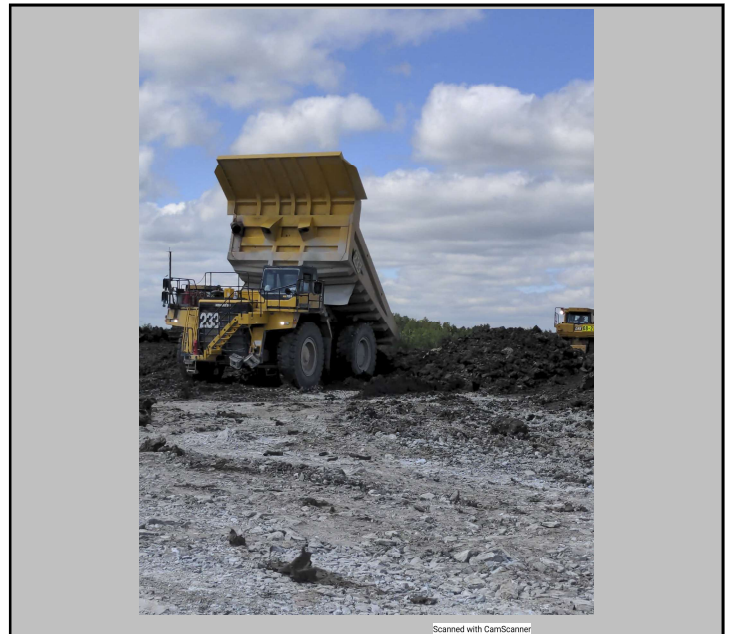


Photo #: 4

Truck 233 dumping material.

PHOTOGRAPHS



Photo #: 5

CAT 349 loading Truck 231.



Photo #: 6

Panel 5 NCL Lift 3.



Photo #:



Photo #:

| | | | |
|---------------------|---------------|--------------------------|-----------------------|
| Date: | June 11, 2021 | Owner/Client: | New Gold Inc. |
| Day: | Friday | OKC Project #: | 1003-19 |
| Prepared by: | Martin Moore | Project Location: | Rainy River - Ontario |

Number of Pages in Report 6

Environmental Conditions:

| | | | | |
|-----------------------------|---------|--------|---------------|------------|
| <u>Morning Conditions</u> | Weather | Cloudy | Precipitation | 0 mm |
| Temperature (High/Low) | 20 | 18 | Humidity | 80 to 100% |
| | | | Wind | Moderate |
| <u>Afternoon Conditions</u> | Weather | Clear | Precipitation | 0 mm |
| Temperature (High/Low) | 23 | 20 | Humidity | 60 to 80% |
| | | | Wind | Moderate |

Meeting Summaries

Panel 6 CCL Lift 1 Density testing did not pass. Tulloch informed NG Supervisor of the test results.

General Remarks

NG graded Panel 5 NCL Lift 3. Tulloch surveyed Lift 3 and approved to begin placing NCL Lift 4.

NG graded and packed Panel 6 CCL Lift 1. After packing the first half of the panel density testing resulted in high moisture content >33% and Ice was found when sampling. Re-testing will be completed tomorrow.

NG removing oversize boulders at the toe of slope starting at 2+682 moving east. NG also removed oversize boulders in Panel 6 CCL Lift 1.

NG hauling material for Panel 5 NCL Lift 4.

Description of CCL Material:

CCL material was dark grey with dark and light brown spots mixed in. Material was pliable and could be rolled out to form a ribbon in your hands. Oversize boulders were removed from the lift. Density testing was not approved due to high moisture content. When sampling ice was discovered in the lift.

Panel Approval:

Panel Description

Panel 6 CCL Lift 1 2+722 to 2+682.

| | Yes | No | Comment |
|---|-------------------------------------|-------------------------------------|------------------|
| Material Inspection Suitable for Construction | <input type="checkbox"/> | <input checked="" type="checkbox"/> | |
| Visual Inspection | <input type="checkbox"/> | <input checked="" type="checkbox"/> | |
| Layer Thickness Acceptable | <input checked="" type="checkbox"/> | <input type="checkbox"/> | |
| Water Content within Acceptable Range | <input type="checkbox"/> | <input checked="" type="checkbox"/> | >33% MC |
| Density within Acceptable Range | <input type="checkbox"/> | <input checked="" type="checkbox"/> | |
| Corrected Actions Taken | <input checked="" type="checkbox"/> | <input type="checkbox"/> | Let material dry |

Testing and Sampling Completed:

Samples
 EMRS21-P6-L1-S179.
 EMRS21-P5-L3-S180.
 EMRS21-P6-L1-S181.
 EMRS21-P6-L1-S182.
 EMRS21-P6-L1-S183.
 Density Tests
 EMRS21-P6-L1-D68-D70.

Reference EMRS Tracking Summary for further information.

Work Location and Task:

| Task Description | Location of Work | Equipment & Personnel Used |
|--------------------------------|------------------------|----------------------------|
| NCL lift 3 placement & grading | Panel 5 2+762 to 2+723 | D8-1 and D8-2 |
| CCL lift 1 grading | Panel 6 2+722 to 2+682 | D8-1 and D8-2 |
| NCL lift 4 placement | Panel 5 2+762 to 2+723 | D8-1 and D8-2 |

Key-in Trench:

| Location | CCL Contact Material | Comment |
|----------|----------------------|---------|
|----------|----------------------|---------|

By signing below I agree that the above statements are an accurate representation of the days events.

CQA / New Gold Representative :

<original signed by>

CQC Representative:

<original signed by>

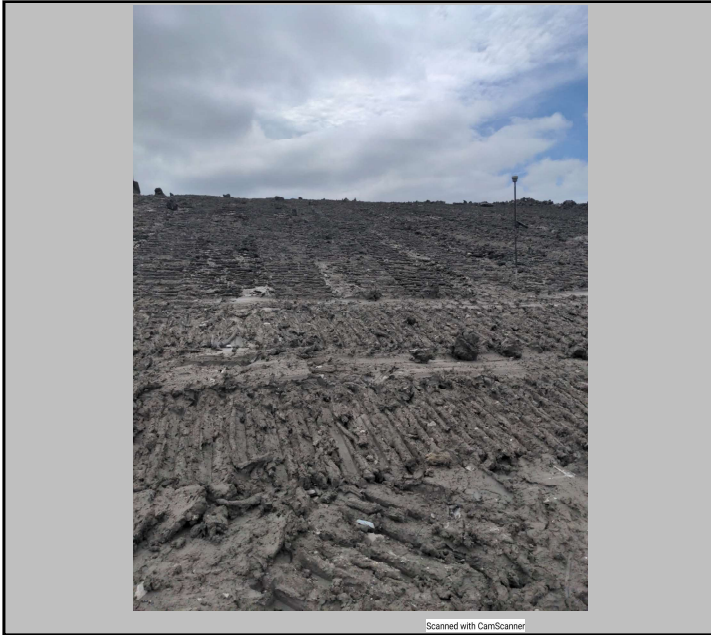


Photo #: 1

Panel 5 NCL Lift 3.



Photo #: 2

Grading Panel 6 CCL Lift 1.

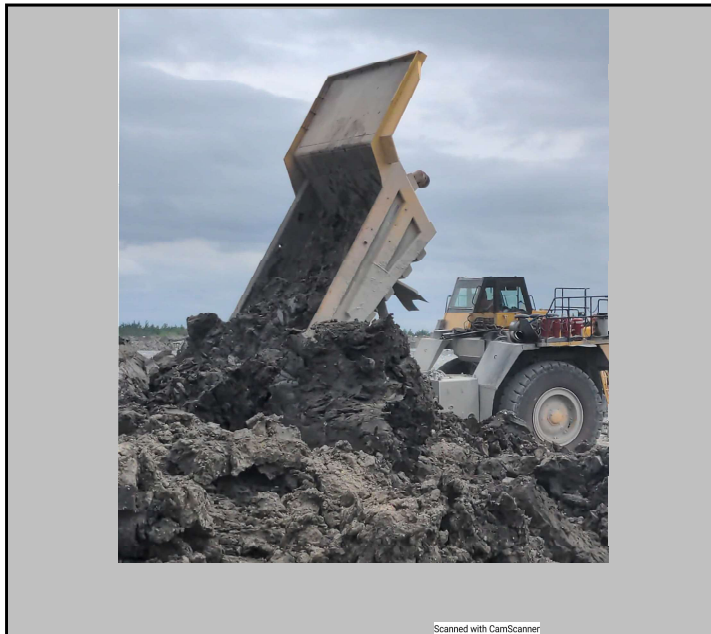


Photo #: 3

End dumping material.



Photo #: 4

EMRS21-P6-L1-S179.

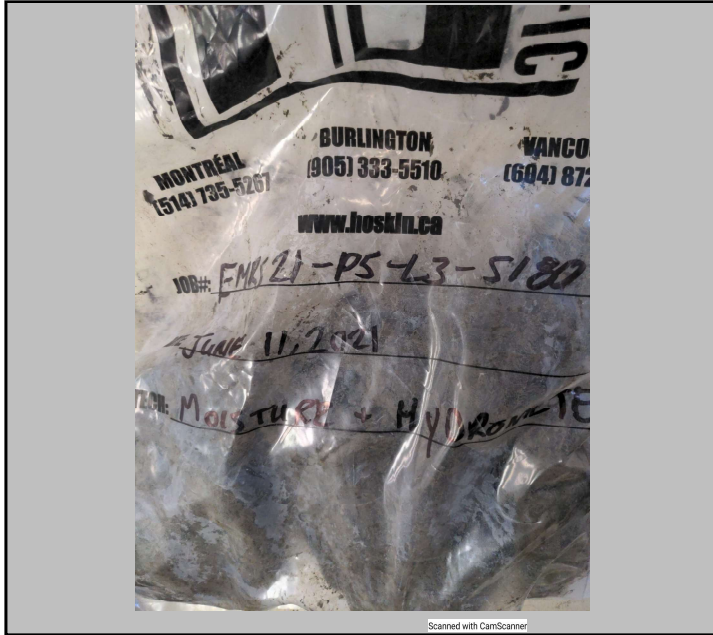


Photo #: 5

EMRS21-P5-L3-S180.



Photo #: 6

EMRS21-P6-L1-S181.



Photo #: 7

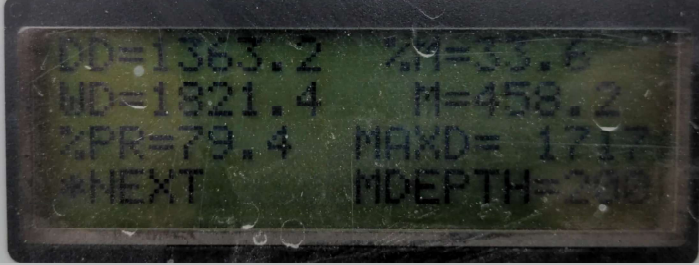
EMRS21-P6-L1-S182.



Photo #: 8

EMRS21-P6-L1-S183.

PHOTOGRAPHS



Scanned with CamScanner

Photo #: 9

EMRS21-P6-L1-D70.



Scanned with CamScanner

Photo #: 10

Grading Panel 6 CCL Lift 1.



Scanned with CamScanner

Photo #: 11

Panel 6 CCL Lift 1.



Scanned with CamScanner

Photo #: 12

Removing oversize boulders.

| | | | |
|---------------------|---------------|--------------------------|-----------------------|
| Date: | June 12, 2021 | Owner/Client: | New Gold Inc. |
| Day: | Saturday | OKC Project #: | 1003-19 |
| Prepared by: | Martin Moore | Project Location: | Rainy River - Ontario |

Number of Pages in Report

Environmental Conditions:

Morning Conditions

Weather

Clear

Precipitation

0 mm

Temperature
(High/Low)

24

17

Humidity

60 to 80%

Wind

Moderate

Afternoon Conditions

Weather

Clear

Precipitation

0 mm

Temperature
(High/Low)

28

24

Humidity

20 to 40%

Wind

High

Meeting Summaries

Panel 6 CCL Lift 1 Nuclear Gauge testing results varying from 24% to 32% for Moisture content. Tulloch informed New Gold supervisors and discussed with Okane. The lift was re-worked with the Dozer tracks then re-graded with D8-2. After completing one density test that passed the lift was re-packed and testing and sampling completed.

NG Jason Bell visited site.

General Remarks

D8-1 and D8-2 completing grading Panel 5 NCL lift 4. Packer completed packing Panel 6 lift 1. Cat 349 and Tulloch placing and checking grade placing Lift 4 around the trench drain.

Tulloch performed Density testing on Panel 6 CCL Lift 1. D8-1 re-worked the lift with the tracks to allow drying. D8-2 then re-graded and used the packer to complete two passes again on the lift prior to testing. CAT 349 smoothing areas for testing. Tulloch completed a density test prior to re-packing Panel 6 CCL Lift 1 and the test result passed. After re-packing the lift Tulloch completed 5 more density tests and samples. Tests passed, lift was surveyed and approved to place CCL Lift 2.

Cat 349 and wiggle truck removing oversize waste rock and over size bedrock boulders beyond the toe of the EMRS.

Excavator 831 loading haul trucks with clay material from the pit for the EMRS.

Description of CCL Material:

CCL material was dark grey with dark and light brown spots mixed in. Material was pliable and could be rolled out to form a ribbon in your hands. High moisture results required the lift to be re-worked, grade and packed prior to approval.

Panel Approval:

Panel Description

Panel 6 CCL Lift 1 2+722 to 2+682 O/S -80m to 0m

| | Yes | No | Comment |
|---|-------------------------------------|--------------------------|-----------------------------|
| Material Inspection Suitable for Construction | <input checked="" type="checkbox"/> | <input type="checkbox"/> | |
| Visual Inspection | <input checked="" type="checkbox"/> | <input type="checkbox"/> | |
| Layer Thickness Acceptable | <input checked="" type="checkbox"/> | <input type="checkbox"/> | |
| Water Content within Acceptable Range | <input checked="" type="checkbox"/> | <input type="checkbox"/> | |
| Density within Acceptable Range | <input checked="" type="checkbox"/> | <input type="checkbox"/> | |
| Corrected Actions Taken | <input checked="" type="checkbox"/> | <input type="checkbox"/> | Re-worked, graded a packed. |

Testing and Sampling Completed:

Samples

EMRS21-P6-L1-S184-S195

Density tests

EMRS21-P6-L1-D71-D83.

Reference Density Report and EMRS Tracking summary for further information.

Work Location and Task:

| Task Description | Location of Work | Equipment & Personnel Used |
|-----------------------|----------------------|-----------------------------|
| Panel 5 NCL Lift 4 | 2+762 to 2+722 | D8-1, D8-2, CAT 349 |
| Panel 6 CCL Lift 1 | 2+722 to 2+682 | D8-1, D8-2, CAT 349, Packer |
| Oversize rock removal | 2+682> down chainage | CAT 349 and wiggle truck. |

Key-in Trench:

| Location | CCL Contact Material | Comment |
|----------|----------------------|---------|
|----------|----------------------|---------|

By signing below I agree that the above statements are an accurate representation of the days events.

CQA / New Gold Representative :

CQC Representative:

<original signed by>

<original signed by>



Photo #: 1

EMRS21-P6-L1-S184.

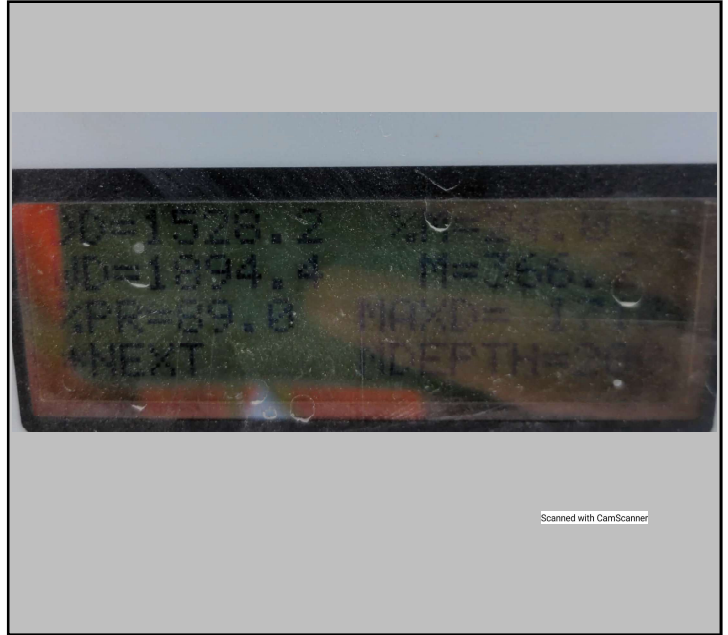


Photo #: 2

EMRS21-P6-L1-D72.



Photo #: 3

EMRS21-P6-L1-S185.



Photo #: 4

EMRS21-P6-L1-S186.



Photo #: 5

EMRS21-P6-L1-S187.



Photo #: 6

EMRS21-P6-L1-S188.

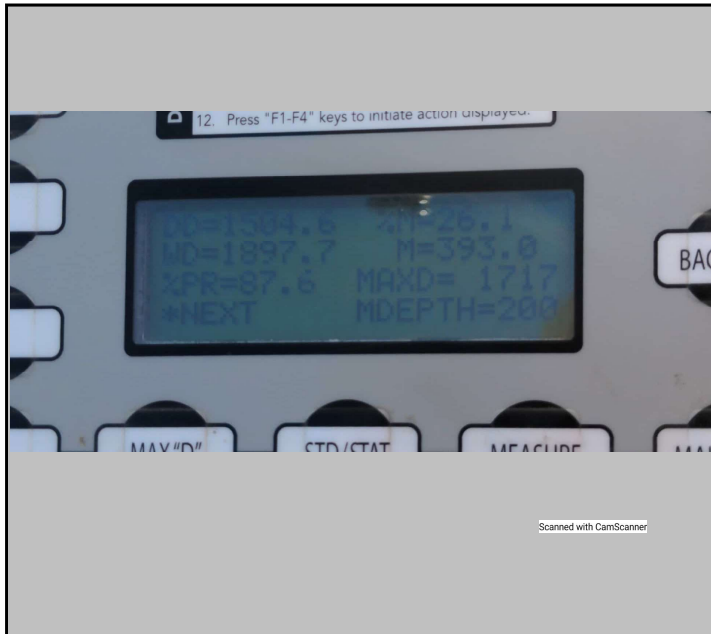


Photo #: 7

EMRS21-P6-L1-D74.



Photo #: 8

EMRS21-P6-L1-S189.

PHOTOGRAPHS



Photo #: 9

EMRS21-P6-L1-S190.



Photo #: 10

Trench Drain Panel 5.



Photo #: 11

Trench Drain Panel 5.

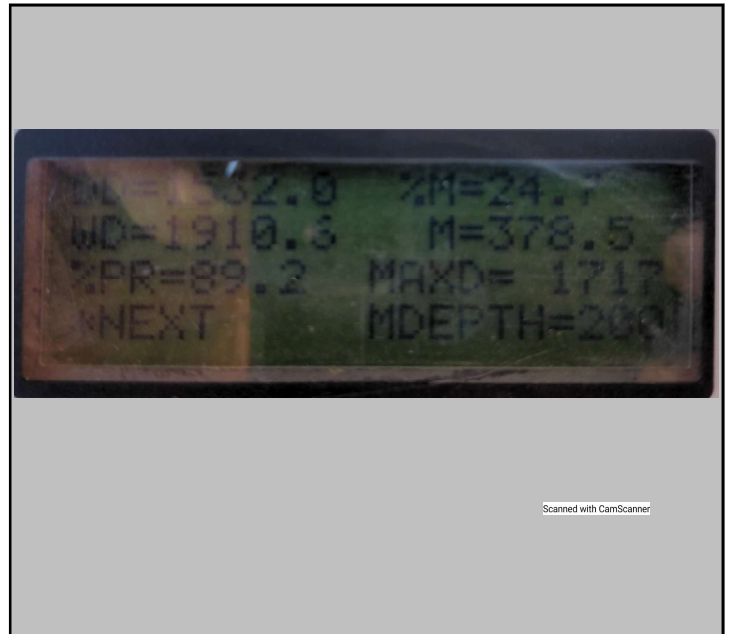


Photo #: 12

EMRS21-P6-L1-D78.

PHOTOGRAPHS

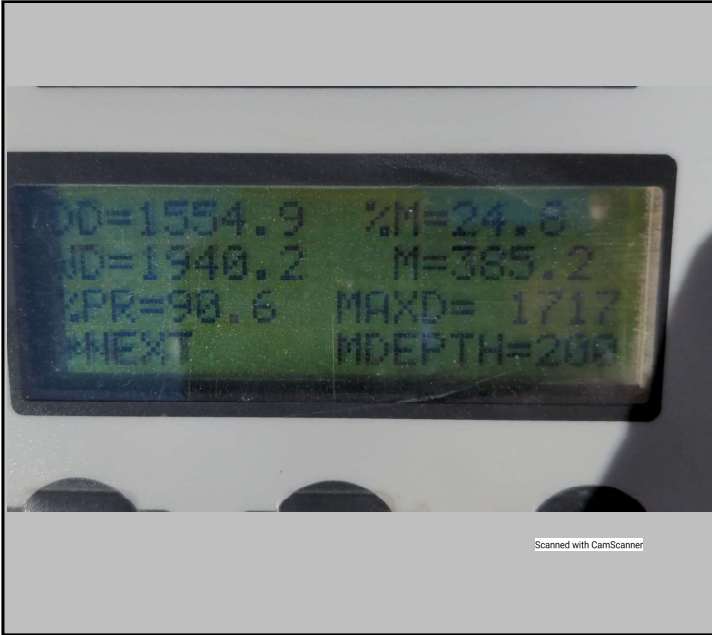


Photo #: 13

EMRS21-P6-L1-D79.



Photo #: 14

EMRS21-P6-L1-S191.



Photo #: 15

EMRS21-P6-L1-S192.



Photo #: 16

EMRS21-P6-L1-S193.

PHOTOGRAPHS

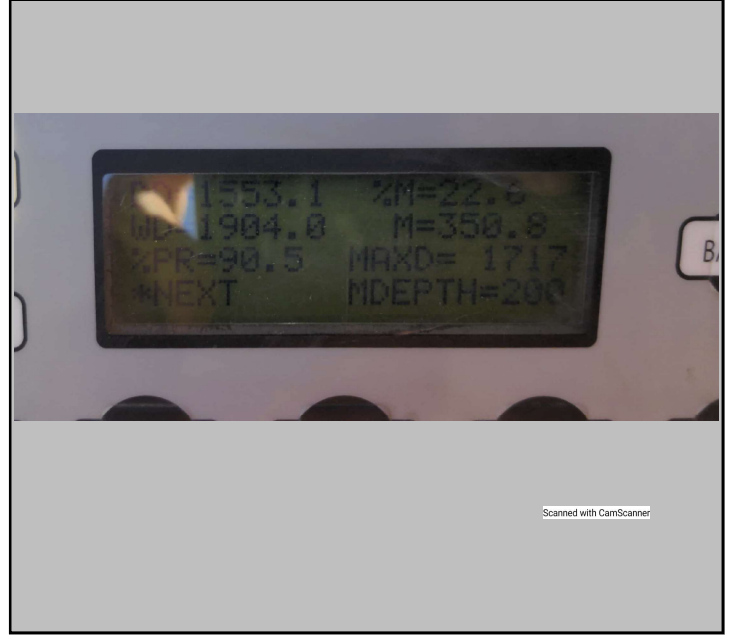


Photo #: 17

Photo #: 18

EMRS21-P6-L1-S194.

EMRS21-P6-L1-D83.



Photo #: 19

Photo #: 20

EMRS21-P6-L1-S195.

Panel 6 CCL Lift 1.

| | | | |
|---------------------|---------------|--------------------------|-----------------------|
| Date: | June 13, 2021 | Owner/Client: | New Gold Inc. |
| Day: | Sunday | OKC Project #: | 1003-19 |
| Prepared by: | Martin Moore | Project Location: | Rainy River - Ontario |

Number of Pages in Report 6

Environmental Conditions:

Morning Conditions

Weather

Showers

Precipitation

0 - 5 mm

Temperature
(High/Low)

17

15

Humidity

80 to 100%

Wind

Low

Afternoon Conditions

Weather

Clear

Precipitation

0 mm

Temperature
(High/Low)

28

17

Humidity

40 to 60%

Wind

Low

Meeting Summaries

NG and Tulloch discussed areas beyond 2+545 needing to be re-worked due to lots of oversize at toe and uneven slope surface.

General Remarks

NG D8-1 and D8-2 completed placing and grading Panel 6 CCL Lift 2. Rain delayed time to start using the packer due to visual high moisture and roller pickup. Once packing was completed Tulloch tested and sampled the lift. Upon approved test results Tulloch surveyed CCL Lift 2. NG began placing NCL Lift 3 with both dozers and CAT 349 moving material over from stockpiles for the dozers.

CAT 349 and wiggle truck removing oversize from the toe 2+660 moving down chainage and oversize boulders from CCL Lift 2.. CAT 349 using bucket for test pads.

D8-2 began re-sloping the slope of the EMRS rock base starting 2+545 moving down chainage.

Tulloch surveyed Panel 5 NCL Lift 4.

Description of CCL Material:

CCL material was dark grey with dark and light brown spots mixed in. Material was pliable and could be rolled out to form a ribbon in your hands. Abundance of oversize boulders needed to be removed.

Panel Approval:

Panel Description

Panel 6 CCL Lift 2 2+722 to 2+682 O/S 80 to 0m.

| | Yes | No | Comment |
|---|-------------------------------------|--------------------------|---------|
| Material Inspection Suitable for Construction | <input checked="" type="checkbox"/> | <input type="checkbox"/> | |
| Visual Inspection | <input checked="" type="checkbox"/> | <input type="checkbox"/> | |
| Layer Thickness Acceptable | <input checked="" type="checkbox"/> | <input type="checkbox"/> | |
| Water Content within Acceptable Range | <input checked="" type="checkbox"/> | <input type="checkbox"/> | |
| Density within Acceptable Range | <input checked="" type="checkbox"/> | <input type="checkbox"/> | |
| Corrected Actions Taken | <input type="checkbox"/> | <input type="checkbox"/> | |

Testing and Sampling Completed:

Samples

EMRS21-P6-L1-S196-S200

Density tests

EMRS21-P6-L1-D84-D92.

Reference Density Report and EMRS Tracking summary for further information.

Work Location and Task:

| Task Description | Location of Work | Equipment & Personnel Used |
|--------------------------------|-----------------------------|------------------------------|
| CCL Lift 2 placing and grading | Panel 6 2+722 to 2+682 | D8-1 and D8-2, Rental Packer |
| NCL Lift 3 placement | Panel 6 2+722 to 2+682 | D8-1 and D8-2 |
| Oversize rock removal | Panel 6 Lift 2 & 2+660 east | CAT 349 and wiggle truck. |

Key-in Trench:

| Location | CCL Contact Material | Comment |
|----------|----------------------|---------|
|----------|----------------------|---------|

By signing below I agree that the above statements are an accurate representation of the days events.

CQA / New Gold Representative :

<original signed by>

CQC Representative:

<original signed by>



Photo #: 1

Panel 6 CCL Lift 2 placement and grading.



Photo #: 2

EMRS Slope Base re-grade.



Photo #: 3

Panel 6 CCL Lift 2 grading.

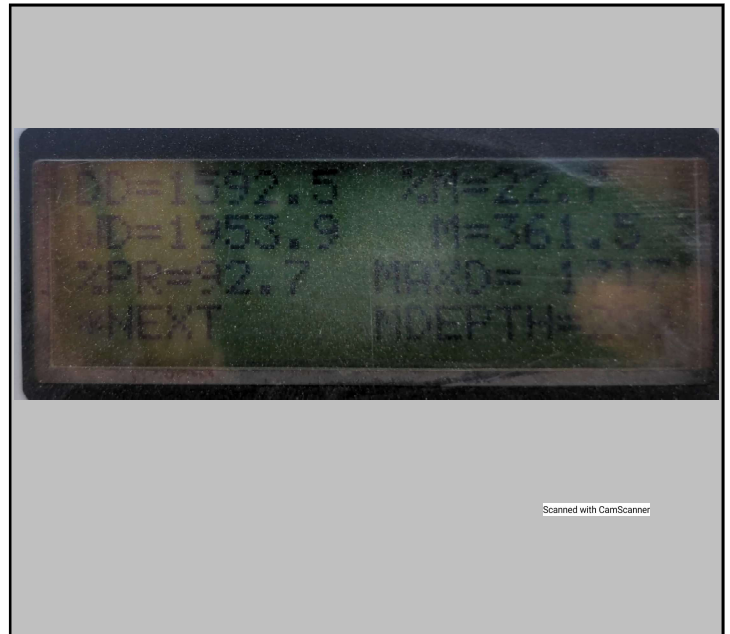


Photo #: 4

EMRS21-P6-L2-D86.

PHOTOGRAPHS



Photo #: 5

EMRS21-P6-L2-S196.

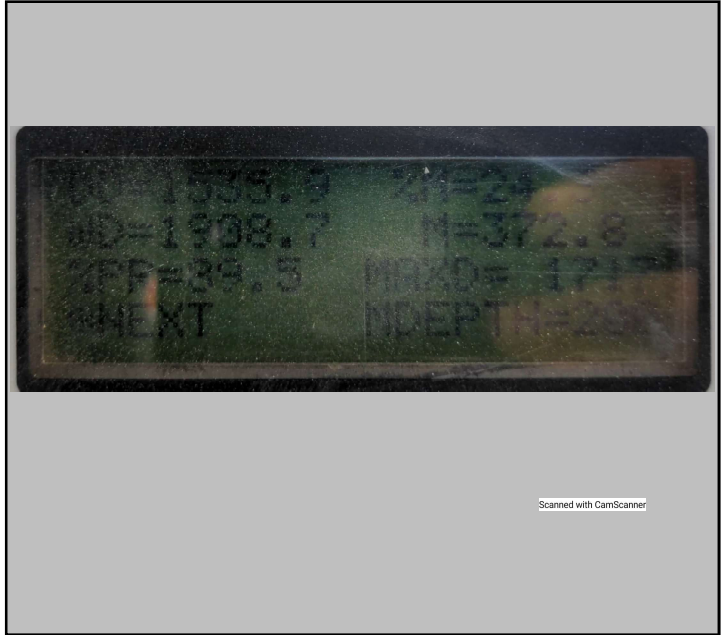


Photo #: 6

EMRS21-P6-L2-D88.



Photo #: 7

EMRS21-P6-L2-S197.



Photo #: 8

EMRS21-P6-L2-S198.

PHOTOGRAPHS

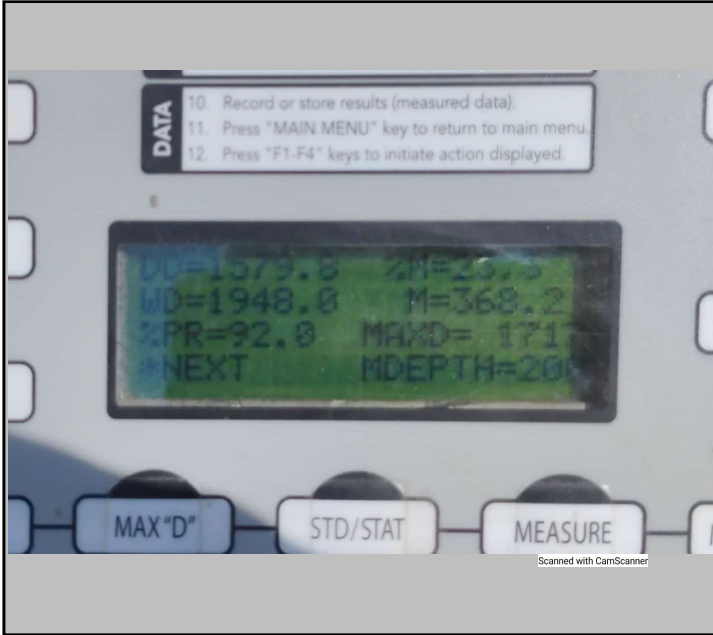


Photo #: 9

EMRS21-P6-L2-D91.



Photo #: 10

EMRS21-P6-L2-S199.



Photo #: 11

EMRS21-P6-L2-S200.



Photo #: 12

Panel 6 CCL Lift 2 and NCL Lift 3 placement.

| | | | |
|---------------------|---------------|--------------------------|-----------------------|
| Date: | June 14, 2021 | Owner/Client: | New Gold Inc. |
| Day: | Monday | OKC Project #: | 1003-19 |
| Prepared by: | Martin Moore | Project Location: | Rainy River - Ontario |

Number of Pages in Report 5

Environmental Conditions:

| | | | | |
|-----------------------------|---------|-------|---------------|-----------|
| <u>Morning Conditions</u> | Weather | Clear | Precipitation | 0 mm |
| Temperature (High/Low) | 20 | 17 | Humidity | 40 to 60% |
| | | | Wind | Low |
| <u>Afternoon Conditions</u> | Weather | Clear | Precipitation | 0 mm |
| Temperature (High/Low) | 23 | 20 | Humidity | 40 to 60% |
| | | | Wind | Moderate |

Meeting Summaries

D8-2 GPS started to malfunction slowing down progress.

General Remarks

Dozers placing Panel 6 NCL Lift 3 to cover CCL Lift 2. D8-1 began bulk placing Panel 7 CCL Lift 1 to allow for drying as D8-2 graded Panel 6 NCL Lift 3.

CAT 349 moving material from stockpiles over for the dozers. Excavated key trench from 2+682 to 2+632 where oversize rock was removed. Using truck 245 to haul out material. CAT 349 began removing oversize boulders and an area with an abundance of waste rock from the stockpiles prior to Dozers placing material for CCL Lifts.

Tulloch surveyed key trench from 2+682 to 2+632.

Dozers placed Panel 7 CCL Lift 1 from 2+682 to 2+652 to allow drying. Material visually wet.

Tulloch checking grade for dozers to ensure proper lift thickness.

CAT 349 and truck 235 removing waste rock material that had been dumped into the clay stockpiles.

Description of CCL Material:

CCL material was dark grey with dark and light brown spots mixed in. Material was pliable and could be rolled out to form a ribbon in your hands. Abundance of oversize boulders being removed prior and during placement.

Panel Approval:

Panel Description

Panel 7 CCL Lift 1 not completed.

| | Yes | No | Comment |
|---|-------------------------------------|-------------------------------------|---------|
| Material Inspection Suitable for Construction | <input checked="" type="checkbox"/> | <input type="checkbox"/> | |
| Visual Inspection | <input checked="" type="checkbox"/> | <input type="checkbox"/> | |
| Layer Thickness Acceptable | <input type="checkbox"/> | <input checked="" type="checkbox"/> | |
| Water Content within Acceptable Range | <input type="checkbox"/> | <input type="checkbox"/> | |
| Density within Acceptable Range | <input type="checkbox"/> | <input type="checkbox"/> | |
| Corrected Actions Taken | <input type="checkbox"/> | <input type="checkbox"/> | |

Testing and Sampling Completed:

No testing or sampling completed today.

Work Location and Task:

| Task Description | Location of Work | Equipment & Personnel Used |
|------------------------------|------------------|----------------------------|
| Panel 6 NCL Lift 3 placement | 2+722 to 2+682 | D8-1 and D8-2 |
| Panel 7 CCL Lift 1 placement | 2+682 to 2+652 | D8-1 and D8-2 |

Key-in Trench:

| Location | CCL Contact Material | Comment |
|----------------|----------------------|----------------------------|
| 2+682 to 2+632 | Bedrock | CAT 349 and truck 245 used |

By signing below I agree that the above statements are an accurate representation of the days events.

CQA / New Gold Representative :

<original signed by>

CQC Representative:

<original signed by>

PHOTOGRAPHS



Photo #: 1

Panel 6 NCL Lift 3 placement and grading.



Photo #: 2

Key Trench 2+682 to 2+632.



Photo #: 3

Waste rock removed from stockpiles.



Photo #: 4

Panel 6 NCL Lift 3 grading.

PHOTOGRAPHS



Photo #: 5

Panel 7 CCL Lift 1 placement and grading.



Photo #: 6

Waste rock removal from stockpiles.



Photo #:

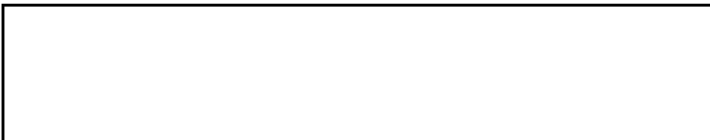


Photo #:



| | | | |
|---------------------|---------------|--------------------------|-----------------------|
| Date: | June 15, 2021 | Owner/Client: | New Gold Inc. |
| Day: | Tuesday | OKC Project #: | 1003-19 |
| Prepared by: | Martin Moore | Project Location: | Rainy River - Ontario |

Number of Pages in Report 6

Environmental Conditions:

Morning Conditions

Weather

Clear

Precipitation

0 mm

Temperature
(High/Low)

22

13

Humidity

80 to 100%

Wind

Low

Afternoon Conditions

Weather

Cloudy

Precipitation

0 mm

Temperature
(High/Low)

24

22

Humidity

40 to 60%

Wind

Choose from list

Meeting Summaries

Okane identified areas on Panel 7 CCL Lift 1 that are visually wet, waste rock pushed beyond the key trench and a small berm created when excavating the key trench. Tulloch had CAT 349 alleviate issues at the key trench. Visually wet areas opened up to allow drying. Weekly meeting to discuss on going progress and resolving any issues. See Meeting minutes for more information.

General Remarks

Excavator 831 loading 100 ton trucks 231, 233 and 235 with clay material to haul to the EMRS.

D8-2 completing Panel 7 CCL Lift 1 placement and grading. Material visually wet in spots.

D8-2 removing oversize boulders when possible.

Tulloch checking grade for Panel 7 CCL Lift 1. Tulloch surveyed Panel 6 NCL Lift 3. D8-1 began placing Panel 6 NCL Lift 4. Area at the toe required some more material for Lift 3.

CAT 349 removed oversize boulders in Panel 7 CCL Lift 1 and in stockpiles and waste rock the dozers pushed to the bottom of the panel. CAT 349 continued removing waste rock that was dumped into the stockpiles.

Attempted packing Panel 7 CCL Lift 1, packer was getting pick-up. Allowed the lift to dry some more. Re-attempt of packing did not have any pick-up, Packer completed 2 passes over the entire Lift.

Description of CCL Material:

CCL material was dark brown with spots of light brown spots mixed in. Material was pliable and could be rolled out to form a ribbon in your hands. Visually the material seemed to have a low abundance of large rocks mixed in.

Panel Approval:

Panel Description

Panel 7 CCL Lift 1 2+682 to 2+652. Lift to be surveyed prior to final approval. Will be included in tomorrow's report.

| | Yes | No | Comment |
|---|-------------------------------------|--------------------------|--------------------------|
| Material Inspection Suitable for Construction | <input checked="" type="checkbox"/> | <input type="checkbox"/> | |
| Visual Inspection | <input checked="" type="checkbox"/> | <input type="checkbox"/> | |
| Layer Thickness Acceptable | <input type="checkbox"/> | <input type="checkbox"/> | Survey to be completed. |
| Water Content within Acceptable Range | <input checked="" type="checkbox"/> | <input type="checkbox"/> | |
| Density within Acceptable Range | <input checked="" type="checkbox"/> | <input type="checkbox"/> | |
| Corrected Actions Taken | <input checked="" type="checkbox"/> | <input type="checkbox"/> | Allowed material to dry. |

Testing and Sampling Completed:

Density Testing
EMRS21-P7-L1-D93-D98.

Samples
EMRS21-P7-L1-S201-S204.

Reference EMRS Tracking Summary for information.

Work Location and Task:

| Task Description | Location of Work | Equipment & Personnel Used |
|--------------------------------|------------------------|----------------------------|
| NCL lift 3 grading | Panel 6 2+722 to 2+682 | D8-1 and D8-2 |
| CCL lift 1 grading and packing | Panel 7 2+682 to 2+652 | D8-2 and Rental Packer |
| NCL lift 4 placement & grading | Panel 6 2+722 to 2+682 | D8-1 and D8-2 |

Key-in Trench:

| Location | CCL Contact Material | Comment |
|----------|----------------------|---------|
|----------|----------------------|---------|

By signing below I agree that the above statements are an accurate representation of the days events.

CQA / New Gold Representative :

<original signed by>

CQC Representative:

<original signed by>

PHOTOGRAPHS



Photo #: 1

Trucks dumping clay material for Panel 6 NCL Lift 4.



Photo #: 2

Panel 6 NCL Lift 3.



Photo #: 3

Dozers placing Panel 6 NCL Lift 4.



Photo #: 4

Panel 7 CCL Lift 1 prior to packing.

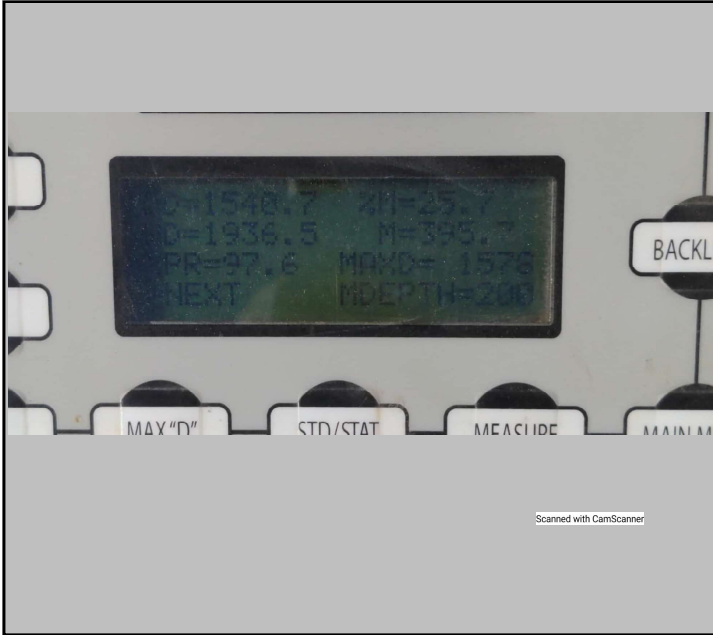


Photo #:

EMRS21-P7-L1-D93.



Photo #:

EMRS21-P7-L1-201.



Photo #:

EMRS21-P7-L1-202.

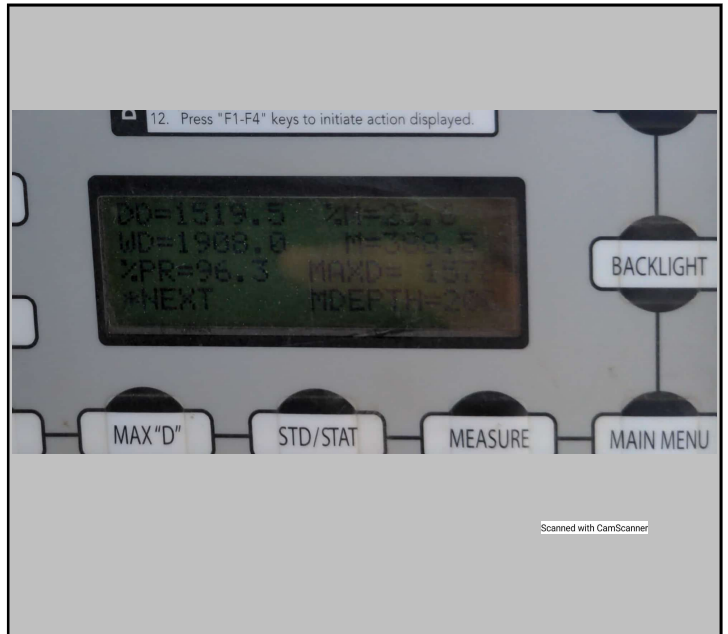


Photo #:

EMRS21-P7-L1-D97.

PHOTOGRAPHS



Photo #:

EMRS21-P7-L1-203.

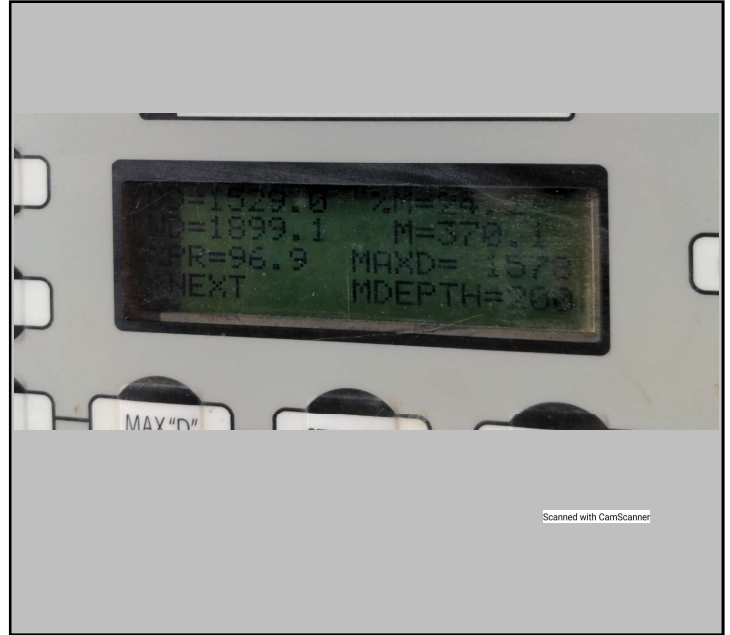


Photo #:

EMRS21-P7-L1-D98.



Photo #:

EMRS21-P7-L1-204.



Photo #:

| | | | |
|---------------------|---------------|--------------------------|-----------------------|
| Date: | June 16, 2021 | Owner/Client: | New Gold Inc. |
| Day: | Wednesday | OKC Project #: | 1003-19 |
| Prepared by: | Martin Moore | Project Location: | Rainy River - Ontario |

Number of Pages in Report

Environmental Conditions:

Morning Conditions

Weather

Clear

Precipitation

0 mm

Temperature
(High/Low)

22

14

Humidity

80 to 100%

Wind

Moderate

Afternoon Conditions

Weather

Clear

Precipitation

0 mm

Temperature
(High/Low)

29

22

Humidity

20 to 40%

Wind

High

Meeting Summaries

NG supervisor informed Tulloch starting with Panel 7 and moving forward the 10m bench from the crest is to be reduced down to 5m.

General Remarks

Dozers continued placing Panel 6 NCL Lift 4 as Tulloch surveyed Panel 7 CCL Lift 1 and the test locations from yesterday. Panel 7 CCL Lift 1 survey completed and Lift 1 approved for Lift 2 placement.

CAT 349 moving material and removing oversize boulders from stockpiled material that will be used in Panel 7 CCL Lift 2. Dozers moved over to place Panel 7 CCL Lift 2, Tulloch doing grade checks to ensure proper lift thickness.

Tulloch and CAT 349 obtaining Proctor samples from Stockpiles. Tulloch had CAT 349 excavate to approximately 0.5m above the base surface to gather material for samples. Sample 205 looked dark grey with some spots of lighter brown resembling a mixture of WML and Brenna. Sample 206 was lighter brown resembling a more Brenna material. Tulloch noticed Stockpiled material from 2+631 to 2+577 contains more lighter brown material at the surface.

D8-1 and D8-2 completed grading Panel 7 CCL Lift 2 and moved back to Panel 6 NCL Lift 4.

Description of CCL Material:

CCL material was dark brown and grey with spots of light brown spots mixed in. Material was pliable and could be rolled out to form a ribbon in your hands. Visually the material seemed to have an abundance of large and small rocks mixed in. Oversize and smaller rocks removed from the lift.

Panel Approval:

Panel Description

Panel 7 CCL Lift 1 2+682 to 2+652 O/S -65m to 0m.
Panel 7 CCL Lift 2 2+682 to 2+652 O/S -60m to 0m Testing and sampling complete and accepted. Survey to be completed.

| | Yes | No | Comment |
|---|-------------------------------------|--------------------------|---------|
| Material Inspection Suitable for Construction | <input checked="" type="checkbox"/> | <input type="checkbox"/> | |
| Visual Inspection | <input checked="" type="checkbox"/> | <input type="checkbox"/> | |
| Layer Thickness Acceptable | <input checked="" type="checkbox"/> | <input type="checkbox"/> | |
| Water Content within Acceptable Range | <input checked="" type="checkbox"/> | <input type="checkbox"/> | |
| Density within Acceptable Range | <input checked="" type="checkbox"/> | <input type="checkbox"/> | |
| Corrected Actions Taken | <input type="checkbox"/> | <input type="checkbox"/> | |

Testing and Sampling Completed:

Stockpile Proctor samples.
EMRS21-SP-S205 and EMRS21-SP-S206.
Panel 7 CCL Lift 2 samples.
EMRS21-P7-L2-S207-S209.

Density Tests.
EMRS21-P7-L2-D99-D105.

Reference EMRS Tracking Summary and Density Report for further information.

Work Location and Task:

| Task Description | Location of Work | Equipment & Personnel Used |
|--------------------------------|------------------------|----------------------------|
| NCL lift 4 placement & grading | Panel 6 2+722 to 2+682 | D8-1 and D8-2 |
| CCL lift 2 placement & grading | Panel 7 2+682 to 2+652 | D8-1 and D8-2 |

Key-in Trench:

| Location | CCL Contact Material | Comment |
|----------|----------------------|---------|
|----------|----------------------|---------|

By signing below I agree that the above statements are an accurate representation of the days events.

CQA / New Gold Representative :

<original signed by>

CQC Representative:

<original signed by>

PHOTOGRAPHS



Photo #: 1

Panel 7 CCL Lift 2 placement.



Photo #: 2

EMRS21-SP-S205.



Photo #: 3

Test pit for Sample 205.



Photo #: 4

EMRS21-SP-S206.

PHOTOGRAPHS



Photo #: 5

Test pit for Sample 206.



Photo #: 6

Oversize and waste removed from material.



Photo #: 7

EMRS21-P7-L2-S207

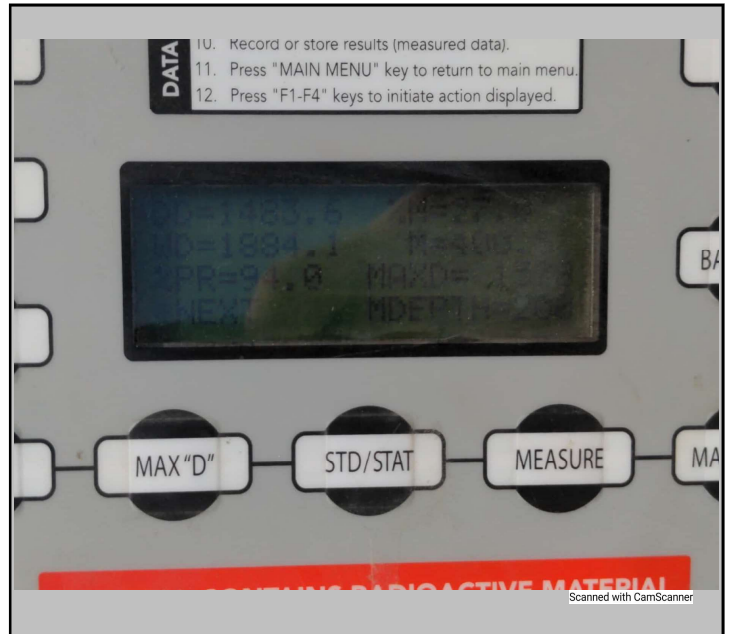


Photo #: 8

EMRS21-P7-L2-D103.

PHOTOGRAPHS



Photo #: 9

EMRS21-P7-L2-S208



Photo #: 10

EMRS21-P7-L2-D104 test rock discovered.

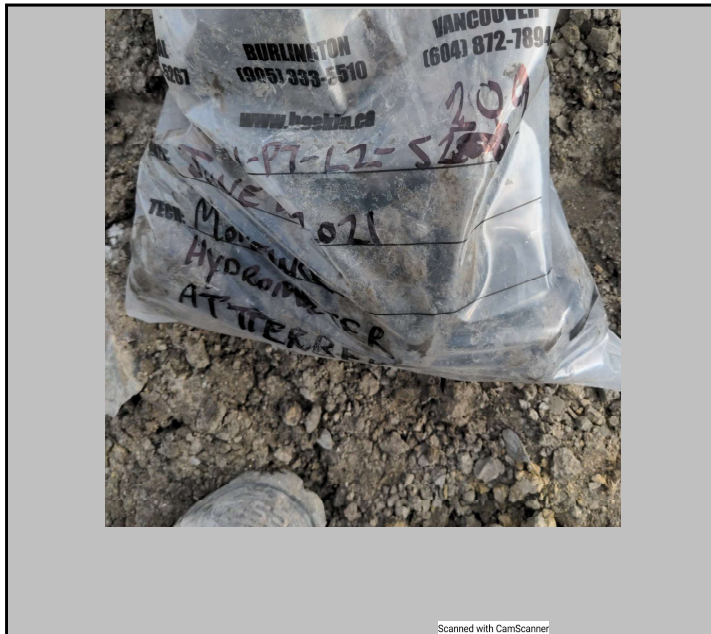


Photo #: 11

EMRS21-P7-L2-S209.



Photo #: 12

| | | | |
|---------------------|---------------|--------------------------|-----------------------|
| Date: | June 17, 2021 | Owner/Client: | New Gold Inc. |
| Day: | Thursday | OKC Project #: | 1003-19 |
| Prepared by: | Martin Moore | Project Location: | Rainy River - Ontario |

Number of Pages in Report 5

Environmental Conditions:

Morning Conditions

Weather

Clear

Precipitation

0 mm

Temperature
(High/Low)

23

19

Humidity

40 to 60%

Wind

Still

Afternoon Conditions

Weather

Clear

Precipitation

0 mm

Temperature
(High/Low)

29

23

Humidity

20 to 40%

Wind

Choose from list

Meeting Summaries

EMRS had rain overnight. Okane requested to use the Density gauge to check moisture prior to final approval to place NCL Lift 3 on Panel 7. Results passed and Okane and Tulloch approved Panel 7 CCL Lift 2.

General Remarks

NG grading Panel 6 NCL Lift 4. Once Panel 7 CCL Lift 2 was approved NG moved over to Panel 7 to place NCL Lift 3 in 24 hours.

Tulloch completed Panel 7 CCL Lift 2 survey and confirmed proper lift thickness. After test EMRS21-P7-L2-D106 NG began placing NCL lift 3. Stockpile material being moved over for lift 3 with CAT 349 and D8-1.

Haul trucks are hauling clay material to the corner stockpiles of the NE corner of the EMRS.

Description of CCL Material:

CCL material was dark brown and grey with spots of light brown spots mixed in. Material was pliable and could be rolled out to form a ribbon in your hands. Visually the material seemed to have an abundance of large and small rocks mixed in. Oversize and smaller rocks removed from the lift.

Panel Approval:

Panel Description

Panel 7 CCL Lift 2 2+682 to 2+652 O/S.

| | Yes | No | Comment |
|---|-------------------------------------|--------------------------|---------|
| Material Inspection Suitable for Construction | <input checked="" type="checkbox"/> | <input type="checkbox"/> | |
| Visual Inspection | <input checked="" type="checkbox"/> | <input type="checkbox"/> | |
| Layer Thickness Acceptable | <input checked="" type="checkbox"/> | <input type="checkbox"/> | |
| Water Content within Acceptable Range | <input checked="" type="checkbox"/> | <input type="checkbox"/> | |
| Density within Acceptable Range | <input checked="" type="checkbox"/> | <input type="checkbox"/> | |
| Corrected Actions Taken | <input type="checkbox"/> | <input type="checkbox"/> | |

Testing and Sampling Completed:

Samples.
EMRS-P6-L4-S210-S211.

Density Testing
EMRS-P7-L2-D106.

Work Location and Task:

| Task Description | Location of Work | Equipment & Personnel Used |
|----------------------|------------------------|----------------------------|
| NCL Lift 4 grading | Panel 6 2+722 to 2+682 | D8-1 |
| NCL Lift 3 placement | Panel 7 2+682 to 2+652 | D8-1 and CAT 349 |

Key-in Trench:

| Location | CCL Contact Material | Comment |
|----------|----------------------|---------|
|----------|----------------------|---------|

By signing below I agree that the above statements are an accurate representation of the days events.

CQA / New Gold Representative :

CQC Representative:

<original signed by>

<original signed by>



Photo #: 1

Panel 7 CCL Lift 2.



Photo #: 2

Panel 6 NCL Lift 4.



Photo #: 3

EMRS21-P6-L4-S210.



Photo #: 4

EMRS21-P6-L4-S211.

PHOTOGRAPHS

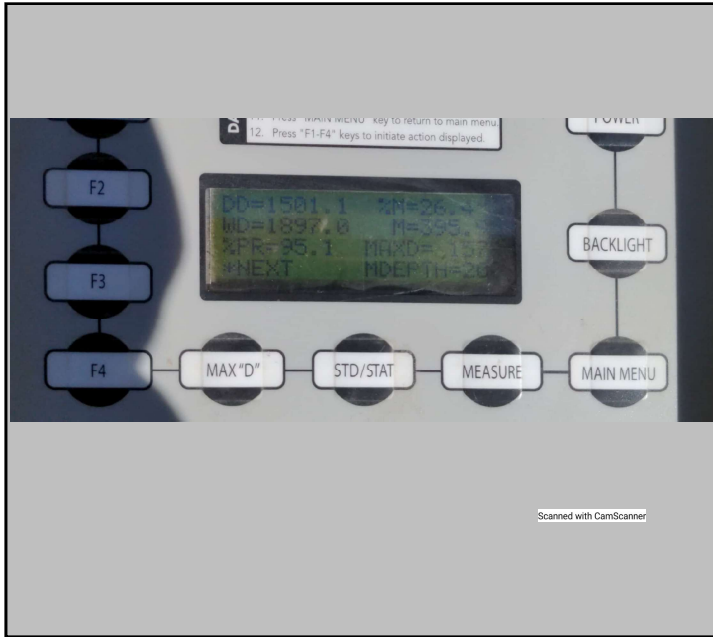


Photo #: 5

EMRS21-P7-L2-D106.

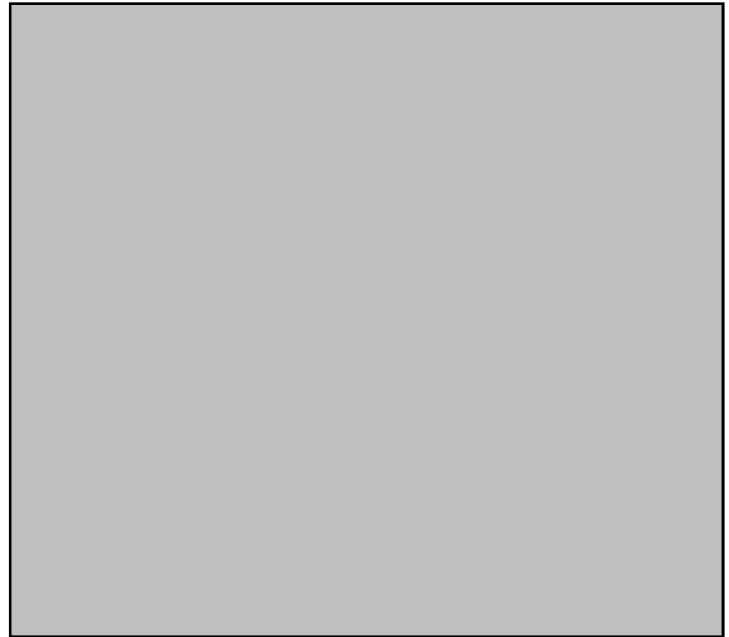


Photo #:



Photo #:



Photo #:

PHOTOGRAPHS



Photo #:



Photo #:



Photo #:



Photo #:

Duplicate Page

| | | | |
|---------------------|---------------|--------------------------|-----------------------|
| Date: | June 18, 2021 | Owner/Client: | New Gold Inc. |
| Day: | Friday | OKC Project #: | 1003-19 |
| Prepared by: | Martin Moore | Project Location: | Rainy River - Ontario |

Number of Pages in Report 5

Environmental Conditions:

| | | | | |
|-----------------------------|---------|--------|---------------|-----------|
| <u>Morning Conditions</u> | Weather | Clear | Precipitation | 0 mm |
| Temperature (High/Low) | 21 | 17 | Humidity | 40 to 60% |
| | | | Wind | High |
| <u>Afternoon Conditions</u> | Weather | Cloudy | Precipitation | 0 mm |
| Temperature (High/Low) | 24 | 21 | Humidity | 40 to 60% |
| | | | Wind | High |

Meeting Summaries

NG supervisors on site reviewing oversize rock at the toe and condition of the rock slope base beyond the current work area.

General Remarks

Tulloch surveyed Panel 7 NCL Lift 3 and approved placement for NCL Lift 4. CAT 349 excavated Key trench with little amount of material to removed as bed rock contact is near the surface. Tulloch surveyed Key trench to 2+601 for Panel 8 CCL Lift 1 placement.

D8-1 placing Panel 8 CCL Lift 1. Material is a mix of dark and light brown clay and a mixture of visually wet spots and dry spots.

Okane requested a test pit to install instrumentation at 2+781 O/S -51.5m. Tulloch painted lines for Lift 1 and Lift 2 in the test pit. CAT 349 excavated down to rock to allow instrumentation at different lifts. Put material back in at proper lift thickness and used packer for Lift 1 and 2. Filled in rest of the material to bring to final elevation.

Tulloch continued Panel 6 NCL Lift 4 survey. Toe area requires additional material.

D8-1 and D8-2 grading Panel 8 CCL Lift 1 in preparation for testing and sampling tomorrow.

Description of CCL Material:

CCL material was a mixture of dark and light brown with spots of grey mixed in. Material was pliable and could be rolled out to form a ribbon in your hands. Visually the material seemed to have a low abundance of large rocks mixed in and is visually wet and dry in different spots.

Panel Approval:

Panel Description

No approval today.

| | Yes | No | Comment |
|---|-------------------------------------|-------------------------------------|--------------|
| Material Inspection Suitable for Construction | <input checked="" type="checkbox"/> | <input type="checkbox"/> | |
| Visual Inspection | <input type="checkbox"/> | <input checked="" type="checkbox"/> | |
| Layer Thickness Acceptable | <input type="checkbox"/> | <input checked="" type="checkbox"/> | |
| Water Content within Acceptable Range | <input type="checkbox"/> | <input type="checkbox"/> | Visually wet |
| Density within Acceptable Range | <input type="checkbox"/> | <input type="checkbox"/> | |
| Corrected Actions Taken | <input type="checkbox"/> | <input type="checkbox"/> | |

Testing and Sampling Completed:

No testing and sampling today.

Work Location and Task:

| Task Description | Location of Work | Equipment & Personnel Used |
|----------------------|------------------------|----------------------------|
| CCL Lift 1 placement | Panel 8 2+652 to 2+602 | D8-1 and D8-2. |

Key-in Trench:

| Location | CCL Contact Material | Comment |
|----------------|----------------------|---------------|
| 2+627 to 2+601 | Bedrock | CAT 349 used. |

By signing below I agree that the above statements are an accurate representation of the days events.

CQA / New Gold Representative :

CQC Representative:

<original signed by>

<original signed by>