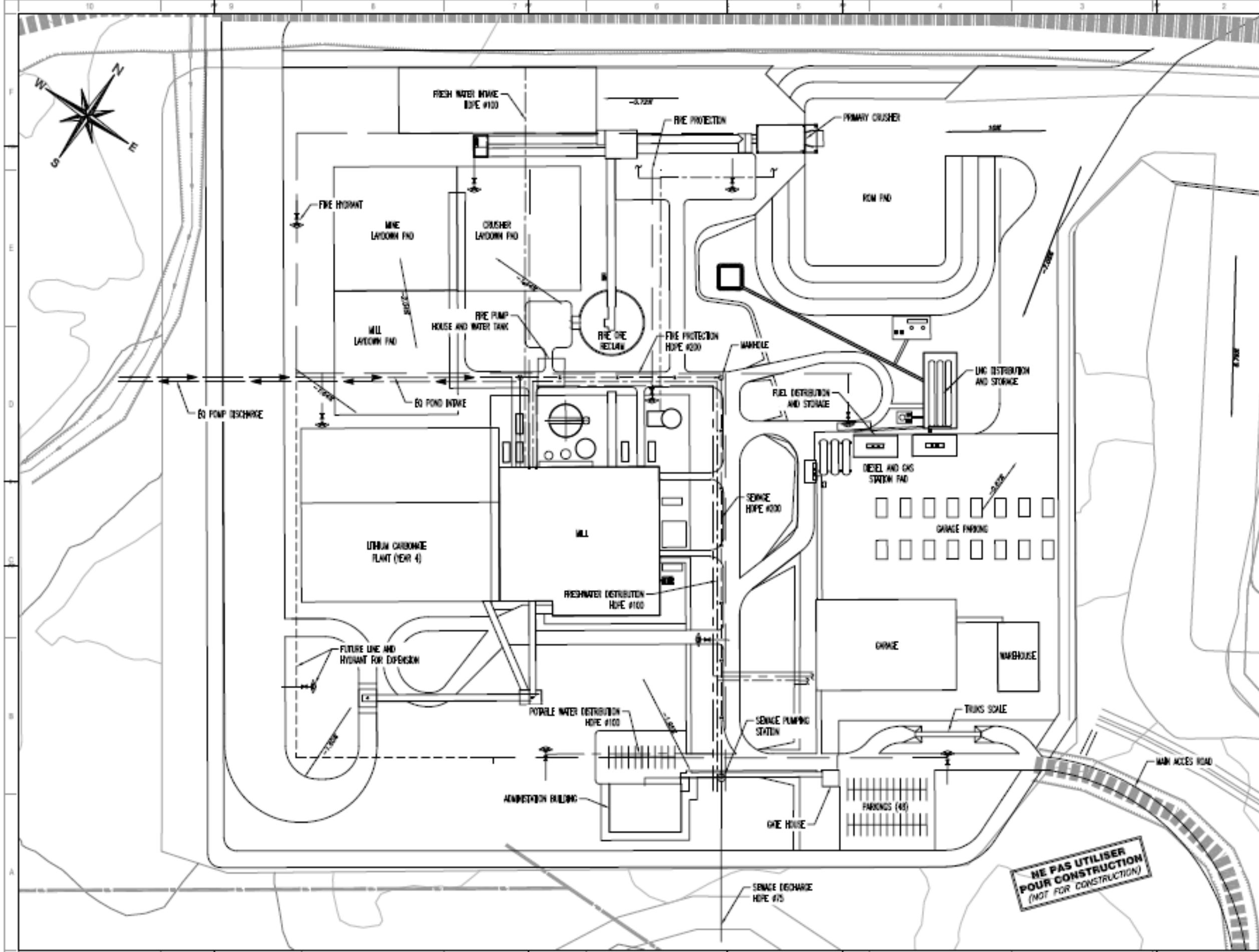


ANNEXE ACEE-52

Zone de ravitaillement d'hydrocarbures\_6000-C-  
0104\_0

---



WSP  
 CONSULTING ENGINEERS AND ARCHITECTS  
 1000 WEST 10TH AVENUE, SUITE 1000  
 DENVER, CO 80202, USA  
 TEL: +1 303 733 9000  
 WWW.WSPGROUP.COM



CriticalElements  
 CORPORATION

**ROSE LIHUN-TANTALUM PROJECT**

PROJECT NO. 8000-C-0104  
 SHEET NO. 1 OF 1  
 DATE: 11/20/11  
 SCALE: AS SHOWN  
 DRAWN BY: J. BROWN  
 CHECKED BY: J. BROWN  
 APPROVED BY: J. BROWN

NO.	DESCRIPTION	DATE
1	ISSUED FOR PERMITTING	11/20/11
2	ISSUED FOR CONSTRUCTION	
3	ISSUED FOR AS-BUILT	

NO.	DESCRIPTION	DATE
1	ISSUED FOR PERMITTING	11/20/11
2	ISSUED FOR CONSTRUCTION	
3	ISSUED FOR AS-BUILT	

INDUSTRIAL PAD  
 GENERAL ARRANGEMENT  
 8000-C-0104  
 11/20/11  
 FOR FEASIBILITY STUDY