

LEGEND

- Provincial Highway
- Road
- Existing Railway
- River/Stream
- Lake

Human Risk Assessment Receptor

- Community
- Cottage
- Tourism Establishment
- Trapper Cabin
- Mine Site Road
- Access Road (Hardtack / Sawbill)
- Project Transmission Line
- Project Facilities
- Air Local Study Area
- Air Regional Study Area
- Linear Infrastructure Study Area
- Mine Facility Study Area
- Acrolien Concentration Contour ($\mu\text{g}/\text{m}^3$)

Acrolien Concentrations ($\mu\text{g}/\text{m}^3$)

High: 7.64
 Low: 0.03

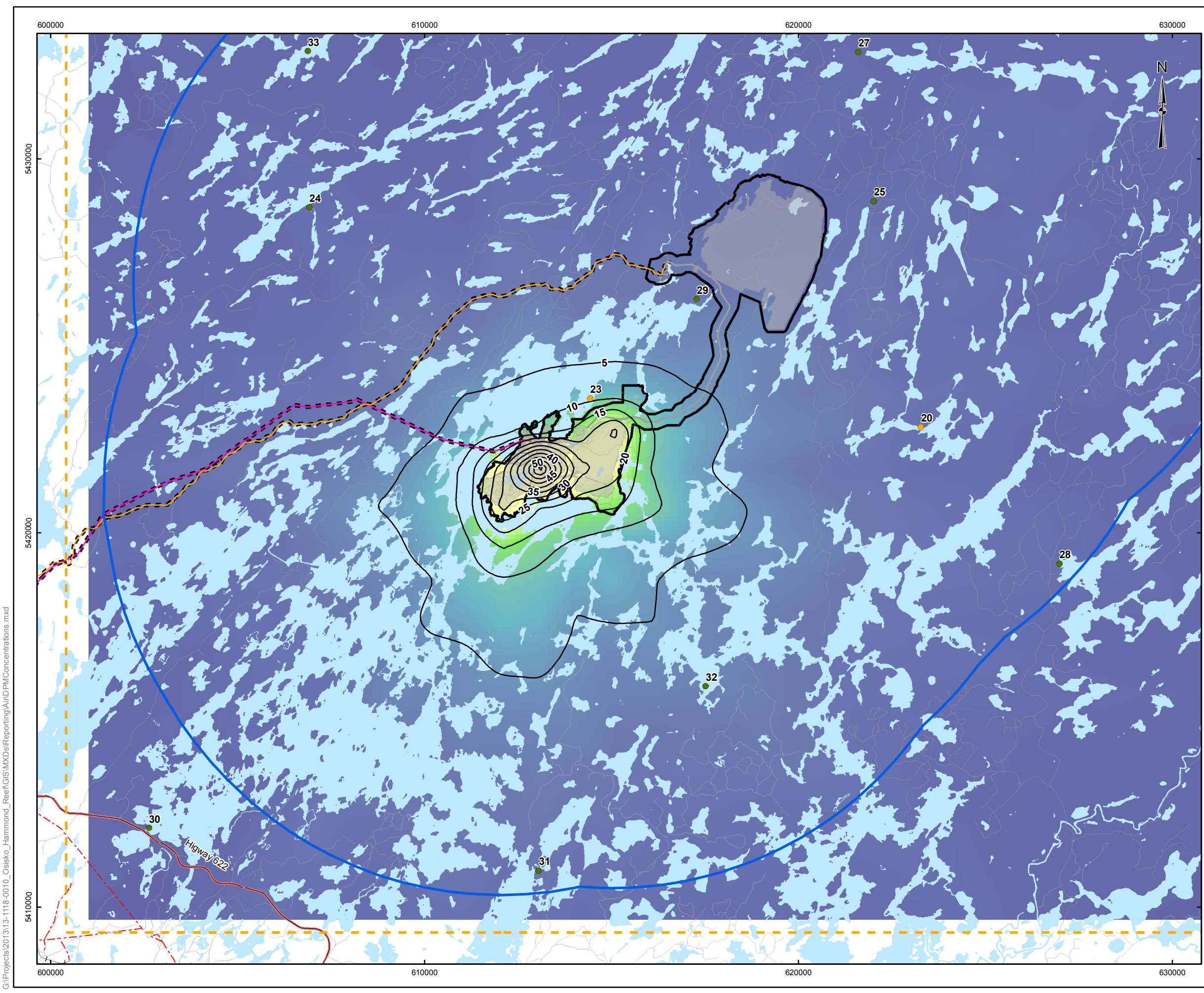
REFERENCE

Base Data - Provided by OSISKO Hammond Reef Gold Project Ltd
 Base Data - MNR NRVIS, obtained 2004
 Produced by Golder Associates Ltd under licence from
 Ontario Ministry of Natural Resources, © Queens Printer 2008
 Projection: Transverse Mercator Datum: NAD 83 Coordinate System: UTM Zone 15N



PROJECT		HAMMOND REEF GOLD PROJECT ATIKOKAN, ONTARIO, CANADA	
TITLE		ACROLIEN CONCENTRATION ($\mu\text{g}/\text{m}^3$) CONTOURS AND HUMAN HEALTH RECEPTORS	
Golder Associates Mississauga, Ontario	PROJECT NO.	13-1118-0010	SCALE AS SHOWN
	DESIGN	CGE 14 Nov. 2008	REV. ION 2
	CHECK	NH 14 Apr. 2014	
	REVIEW	TRS 14 Apr. 2014	

G:\Projects\2013\13-1118-0010_Osisko_Hammond_Reef\GIS\MXD\Reporting\Air\AcrolienConcentrations.mxd



LEGEND

- Provincial Highway
- Road
- Existing Railway
- River/Stream
- Lake

Human Risk Assessment Receptor

- Community
- Cottage
- Tourism Establishment
- Trapper Cabin
- Mine Site Road
- Access Road (Hardtack / Sawbill)
- Project Transmission Line
- Project Facilities
- Air Local Study Area
- Air Regional Study Area
- Linear Infrastructure Study Area
- Mine Facility Study Area
- DPM Concentration Contour (µg/m³)

DPM Concentrations (µg/m³)


High: 61.41

Low: 0.23

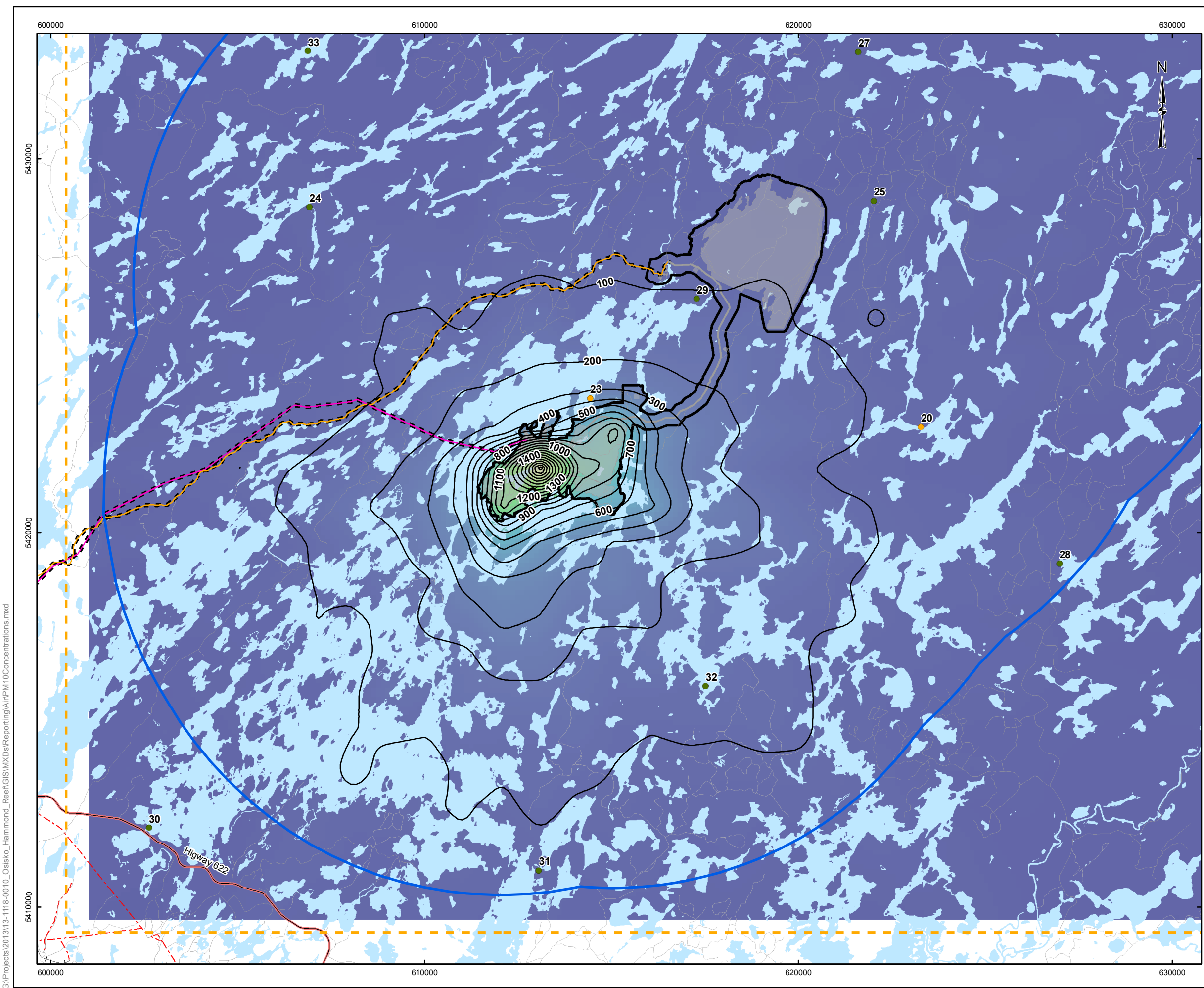
REFERENCE

Base Data - Provided by OSISKO Hammond Reef Gold Project Ltd
 Base Data - MNR NRVIS, obtained 2004
 Produced by Golder Associates Ltd under licence from
 Ontario Ministry of Natural Resources, © Queens Printer 2008
 Projection: Transverse Mercator Datum: NAD 83 Coordinate System: UTM Zone 15N



PROJECT		HAMMOND REEF GOLD PROJECT ATIKOKAN, ONTARIO, CANADA	
TITLE		DPM CONCENTRATION (ug/m3) CONTOURS AND HUMAN HEALTH RECEPTORS	
 Golder Associates Mississauga, Ontario	PROJECT NO.	13-1118-0010	SCALE AS SHOWN
	DESIGN	CGE	14 Nov. 2008
	CHECK	NH	14 Apr. 2014
	REVIEW	TRS	14 Apr. 2014
		REV. ION 2	
		FIGURE: T-12-2	

G:\Projects\2013\13-1118-0010_Osisko_Hammond_Reef\GIS\MXD\Reporting\Air\DPMConcentrations.mxd



LEGEND

- Provincial Highway
- Road
- Existing Railway
- River/Stream
- Lake

Human Risk Assessment Receptor

- Community
- Cottage
- Tourism Establishment
- Trapper Cabin
- Mine Site Road
- Access Road (Hardtack / Sawbill)
- Project Transmission Line
- Project Facilities
- Air Local Study Area
- Air Regional Study Area
- Linear Infrastructure Study Area
- Mine Facility Study Area
- PM10 Concentration Contour (µg/m³)

PM10 Concentrations (µg/m³)

High: 2148.29

Low: 8.89

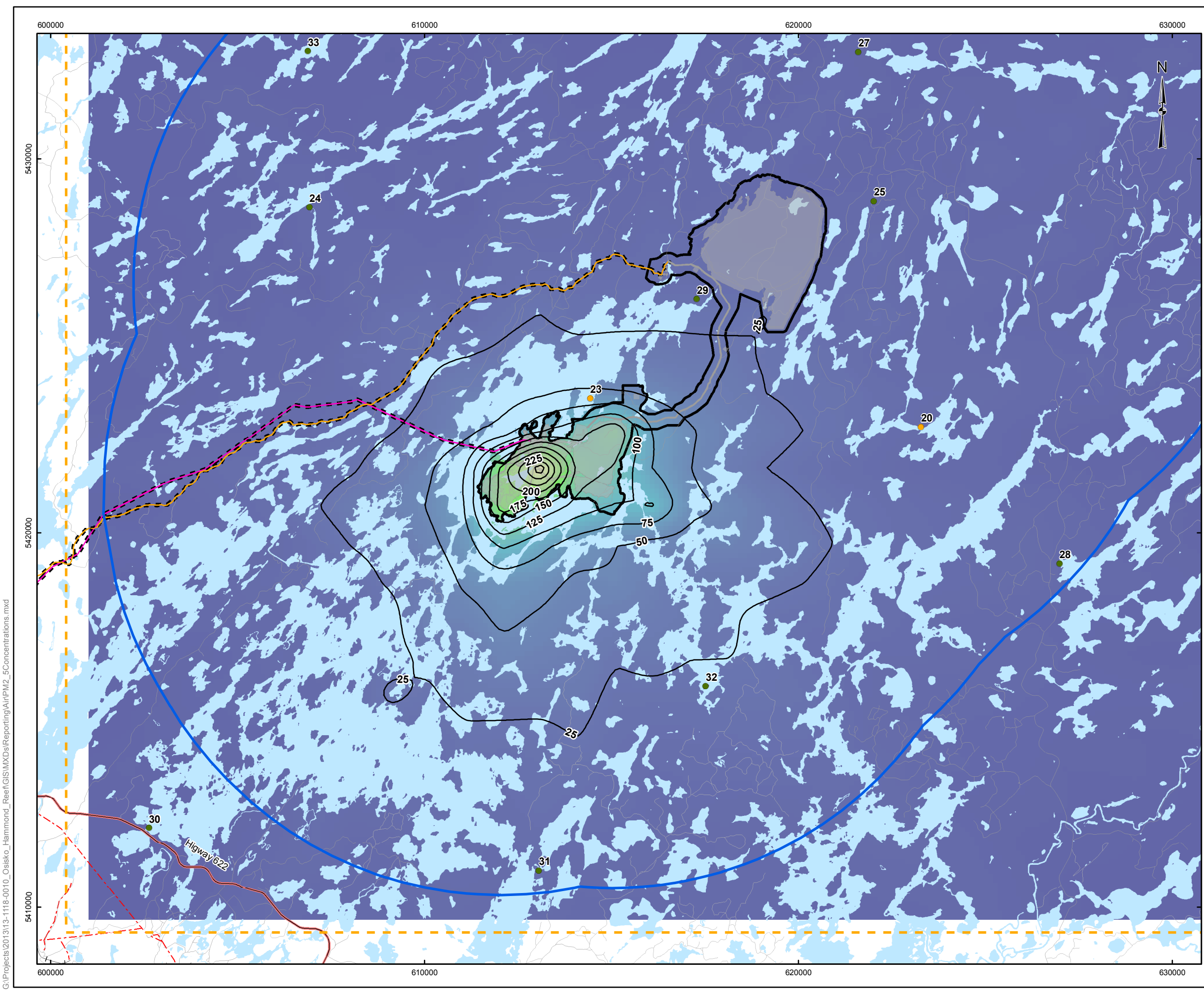
REFERENCE

Base Data - Provided by OSISKO Hammond Reef Gold Project Ltd
 Base Data - MNR NRVIS, obtained 2004
 Produced by Golder Associates Ltd under licence from
 Ontario Ministry of Natural Resources, © Queens Printer 2008
 Projection: Transverse Mercator Datum: NAD 83 Coordinate System: UTM Zone 15N



PROJECT		HAMMOND REEF GOLD PROJECT ATIKOKAN, ONTARIO, CANADA	
TITLE		PM10 CONCENTRATION (ug/m3) CONTOURS AND HUMAN HEALTH RECEPTORS	
<p>Golder Associates Mississauga, Ontario</p>	PROJECT NO.	13-1118-0010	SCALE AS SHOWN
	DESIGN	CGE 14 Nov. 2008	REV. ION 2
	CHECK	NH 14 Apr. 2014	
	REVIEW	TRS 14 Apr. 2014	
FIGURE: T-12-3			

G:\Projects\2013\13-1118-0010_Osisko_Hammond_Reef\GIS\MXD\Reporting\Air\PM10Concentrations.mxd



LEGEND

- Provincial Highway
- Road
- Existing Railway
- River/Stream
- Lake

Human Risk Assessment Receptor

- Community
- Cottage
- Tourism Establishment
- Trapper Cabin
- Mine Site Road
- Access Road (Hardtack / Sawbill)
- Project Transmission Line
- Project Facilities
- Air Local Study Area
- Air Regional Study Area
- Linear Infrastructure Study Area
- Mine Facility Study Area
- PM2.5 Concentration Contour ($\mu\text{g}/\text{m}^3$)

PM2.5 Concentrations ($\mu\text{g}/\text{m}^3$)

High: 289.45

Low: 1.50

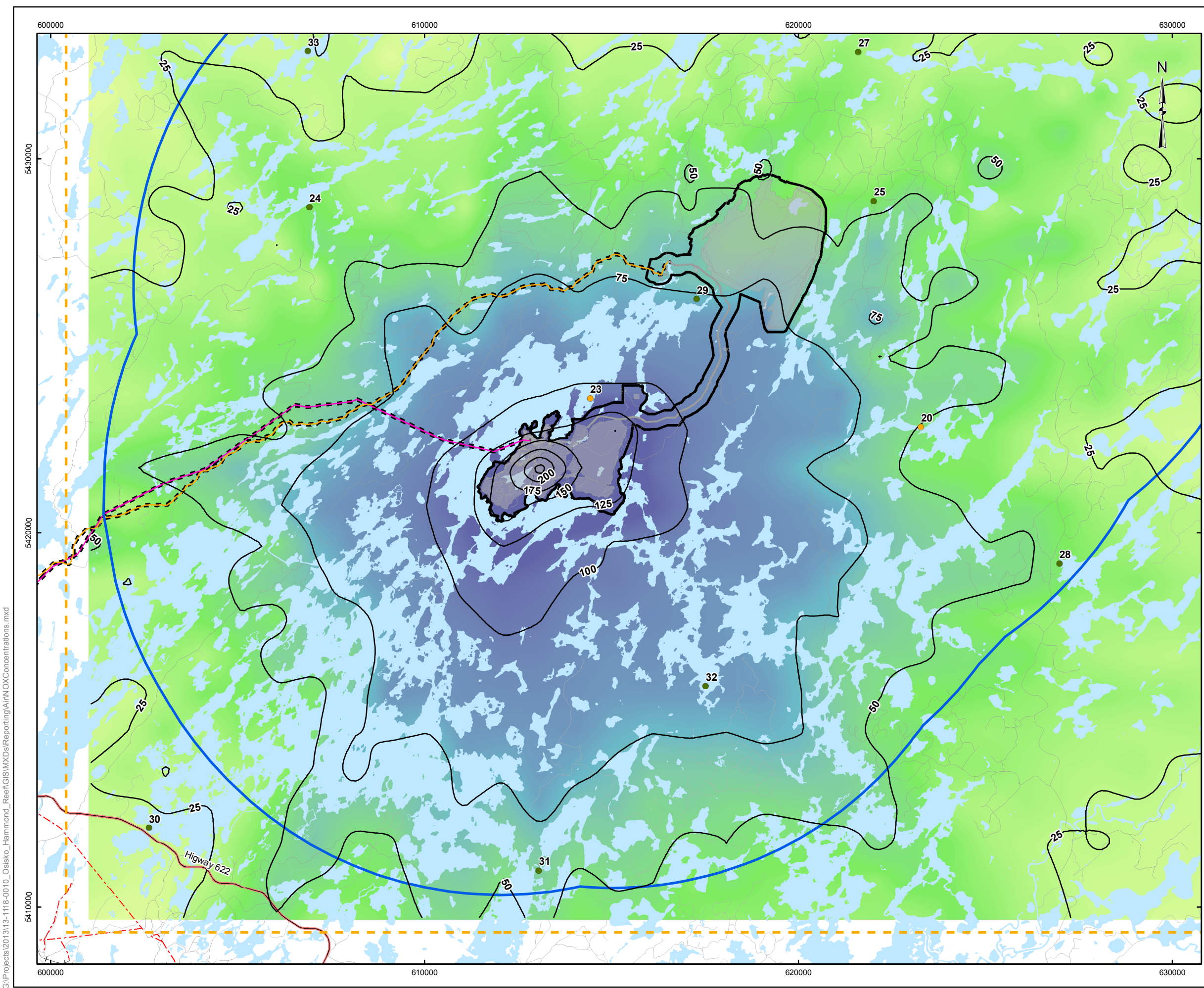
REFERENCE

Base Data - Provided by OSISKO Hammond Reef Gold Project Ltd
 Base Data - MNR NRVIS, obtained 2004
 Produced by Golder Associates Ltd under licence from
 Ontario Ministry of Natural Resources, © Queens Printer 2008
 Projection: Transverse Mercator Datum: NAD 83 Coordinate System: UTM Zone 15N



PROJECT		HAMMOND REEF GOLD PROJECT ATIKOKAN, ONTARIO, CANADA	
TITLE		PM2.5 CONCENTRATION ($\mu\text{g}/\text{m}^3$) CONTOURS AND HUMAN HEALTH RECEPTORS	
<p>Golder Associates Mississauga, Ontario</p>	PROJECT NO.	13-1118-0010	SCALE AS SHOWN
	DESIGN	CGE	14 Nov. 2008
	CHECK	NH	14 Apr. 2014
	REVIEW	TRS	14 Apr. 2014
			FIGURE: T-12-4

G:\Projects\2013\13-1118-0010_Osisko_Hammond_Reef\GIS\MXD\Reporting\Air\PM2.5Concentrations.mxd



LEGEND

- Provincial Highway
- Road
- Existing Railway
- River/Stream
- Lake

Human Risk Assessment Receptor

- Community
- Cottage
- Tourism Establishment
- Trapper Cabin
- Mine Site Road
- Access Road (Hardtack / Sawbill)
- Project Transmission Line
- Project Facilities
- Air Local Study Area
- Air Regional Study Area
- Linear Infrastructure Study Area
- Mine Facility Study Area
- NO2 Concentration Contour (µg/m³)

NO2 Concentrations (µg/m³)

High: 236.25
 Low: 6.53

REFERENCE

Base Data - Provided by OSISKO Hammond Reef Gold Project Ltd
 Base Data - MNR NRVIS, obtained 2004
 Produced by Golder Associates Ltd under licence from
 Ontario Ministry of Natural Resources, © Queens Printer 2008
 Projection: Transverse Mercator Datum: NAD 83 Coordinate System: UTM Zone 15N



PROJECT		HAMMOND REEF GOLD PROJECT ATIKOKAN, ONTARIO, CANADA	
TITLE		NO2 CONCENTRATION (ug/m3) CONTOURS AND HUMAN HEALTH RECEPTORS	
Golder Associates Mississauga, Ontario	PROJECT NO.	13-1118-0010	SCALE AS SHOWN
	DESIGN	CGE	14 Nov. 2008
	CHECK	NH	11 Apr. 2014
	REVIEW	TRS	11 Apr. 2014
		REV. ION 2	
		FIGURE: T-12-5	

G:\Projects\2013\13-1118-0010_Osisko_Hammond_Reef\GIS\MXD\Reporting\Air\NOxConcentrations.mxd