

---

**AMENDED EIS/EA REPORT  
CHAPTER 1: INTRODUCTION  
VERSION 3**

---



# TABLES

**AMENDED EIS/EA REPORT  
 CHAPTER 1: INTRODUCTION  
 VERSION 3**



**Table 1-1: Common Objectives between Great Earth Law and OHRG**

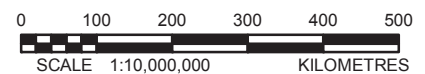
<b>Great Earth Law</b>	<b>OHRG Actions</b>
Understand potential effects of the development on the environment in Treaty 3 territory and on the rights of the Anishinaabe	Carry out an environmental assessment that includes an assessment of potential effects to Aboriginal and treaty rights, as outlined in the EIS Guidelines
Seek a mutually beneficial continuing relationship between the proponents and the Anishinaabe	Carry out meetings, workshops and forums with the Chiefs, Elders and community members of the nine First Nations communities identified as having an interest in the Project. Implement Resource Sharing Committees for regular long-term communication with First Nations communities
A proponent should consult the Nation in the traditional manner	Provide capacity funding for traditional ceremonies to take place as part of engagement meetings, meet with Elders and facilitate traditional ceremonies at the Mine Site
A proponent should ensure that a development is designed, constructed, operated and decommissioned with respect for the environment in Treaty 3 territory and for rights of the Anishinaabe	Carry out an alternative methods assessment which considers potential effects to Aboriginal and treaty rights, as required in the ToR

# FIGURES



**REFERENCE**

Base Data - Provided by OSISKO Hammond Reef Gold Project Ltd.;  
 Base Data - MNR NRVIS, obtained 2004. Produced by Golder Associates Ltd  
 under licence from Ontario Ministry of Natural Resources, © Queens Printer 2012  
 Projection: Transverse Mercator Datum: NAD 83 Coordinate System: UTM Zone 15N



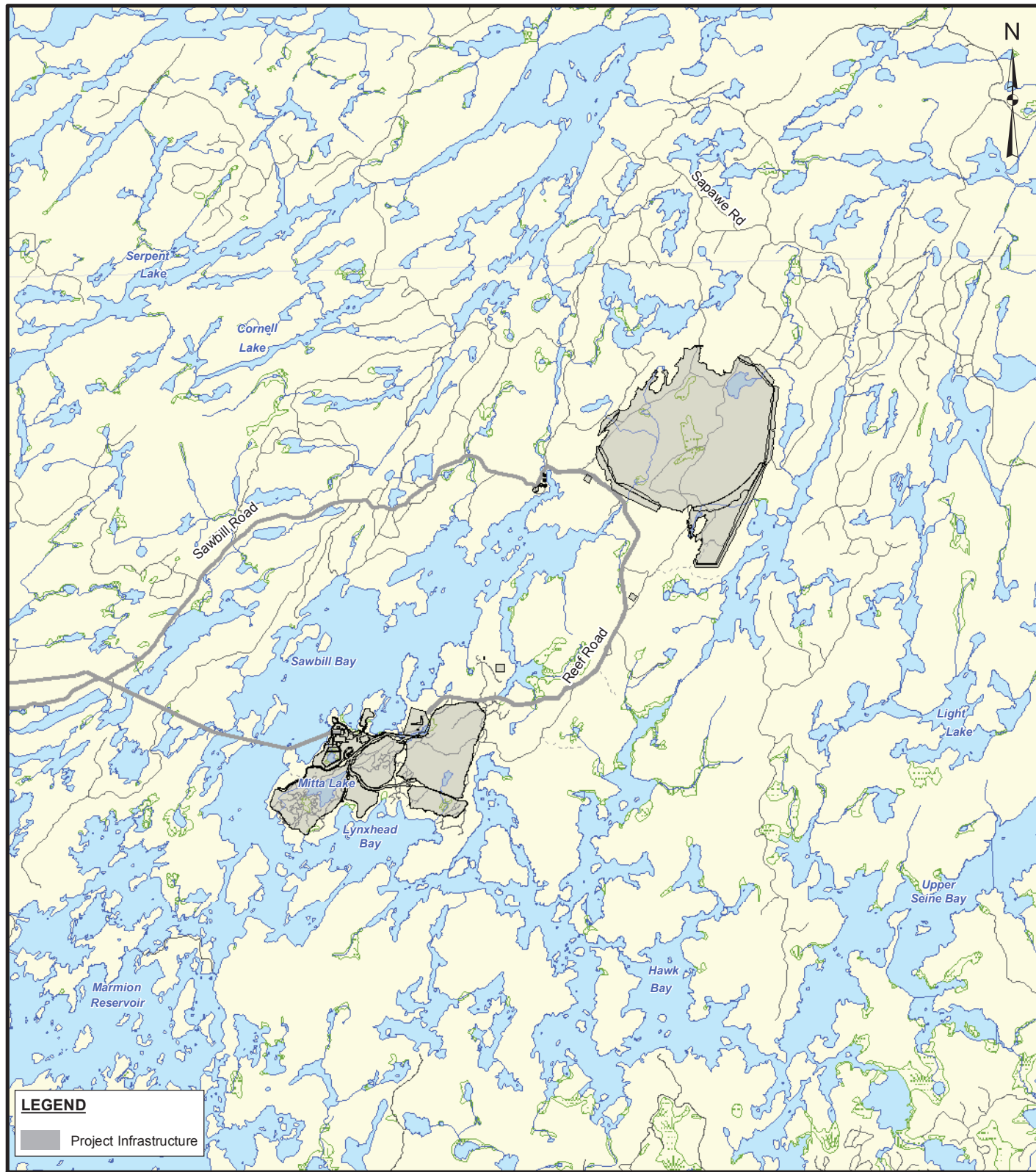
DATE	2 Dec. 2013
DESIGN	CGE
GIS	JO
CHECK	CC
REVIEW	THW

TITLE	<b>PROJECT LOCATION, SCALE OF 1:10,000,000</b>	
PROJECT	HAMMOND REEF GOLD PROJECT ATIKOKAN, ONTARIO, CANADA	
		<b>FIGURE: 1-1a</b>

PROJECT No. 13-1118-0010

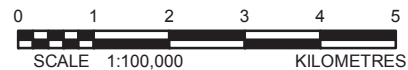
SCALE AS SHOWN

VERSION 2



**REFERENCE**

Base Data - Provided by OSISKO Hammond Reef Gold Project Ltd.;  
 Base Data - MNR NRVIS, obtained 2004. Produced by Golder Associates Ltd  
 under licence from Ontario Ministry of Natural Resources, © Queens Printer 2012  
 Projection: Transverse Mercator Datum: NAD 83 Coordinate System: UTM Zone 15N



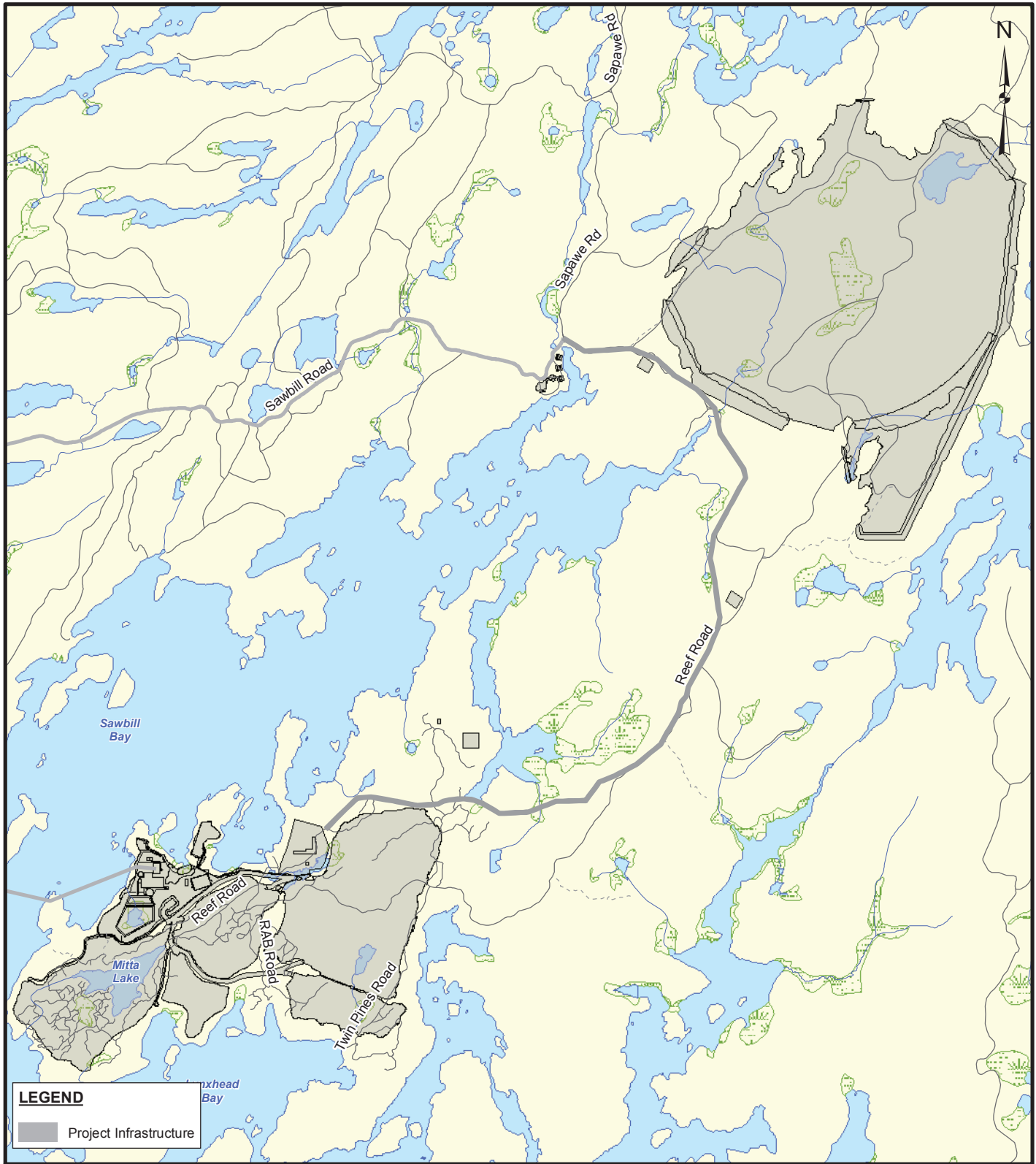
DATE	2 Dec. 2013
DESIGN	CGE
GIS	JO
CHECK	CC
REVIEW	THW

TITLE	<b>PROJECT LOCATION, SCALE OF 1:100,000</b>
PROJECT	
<b>FIGURE: 1-1b</b>	

PROJECT No. 13-1118-0010

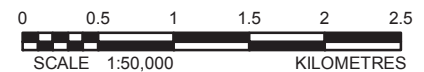
SCALE AS SHOWN

VERSION 2



**REFERENCE**

Base Data - Provided by OSISKO Hammond Reef Gold Project Ltd.;  
 Base Data - MNR NRVIS, obtained 2004. Produced by Golder Associates Ltd  
 under licence from Ontario Ministry of Natural Resources, © Queens Printer 2012  
 Projection: Transverse Mercator Datum: NAD 83 Coordinate System: UTM Zone 15N



DATE	2 Dec. 2013
DESIGN	CGE
GIS	JO
CHECK	CC
REVIEW	THW

TITLE	<b>PROJECT LOCATION, SCALE OF 1:50,000</b>	
PROJECT	HAMMOND REEF GOLD PROJECT ATIKOKAN, ONTARIO, CANADA	
		<b>FIGURE: 1-1c</b>

PROJECT No. 13-1118-0010

SCALE AS SHOWN

VERSION 2

**AMENDED EIS/EA REPORT  
CHAPTER 1: INTRODUCTION  
VERSION 3**

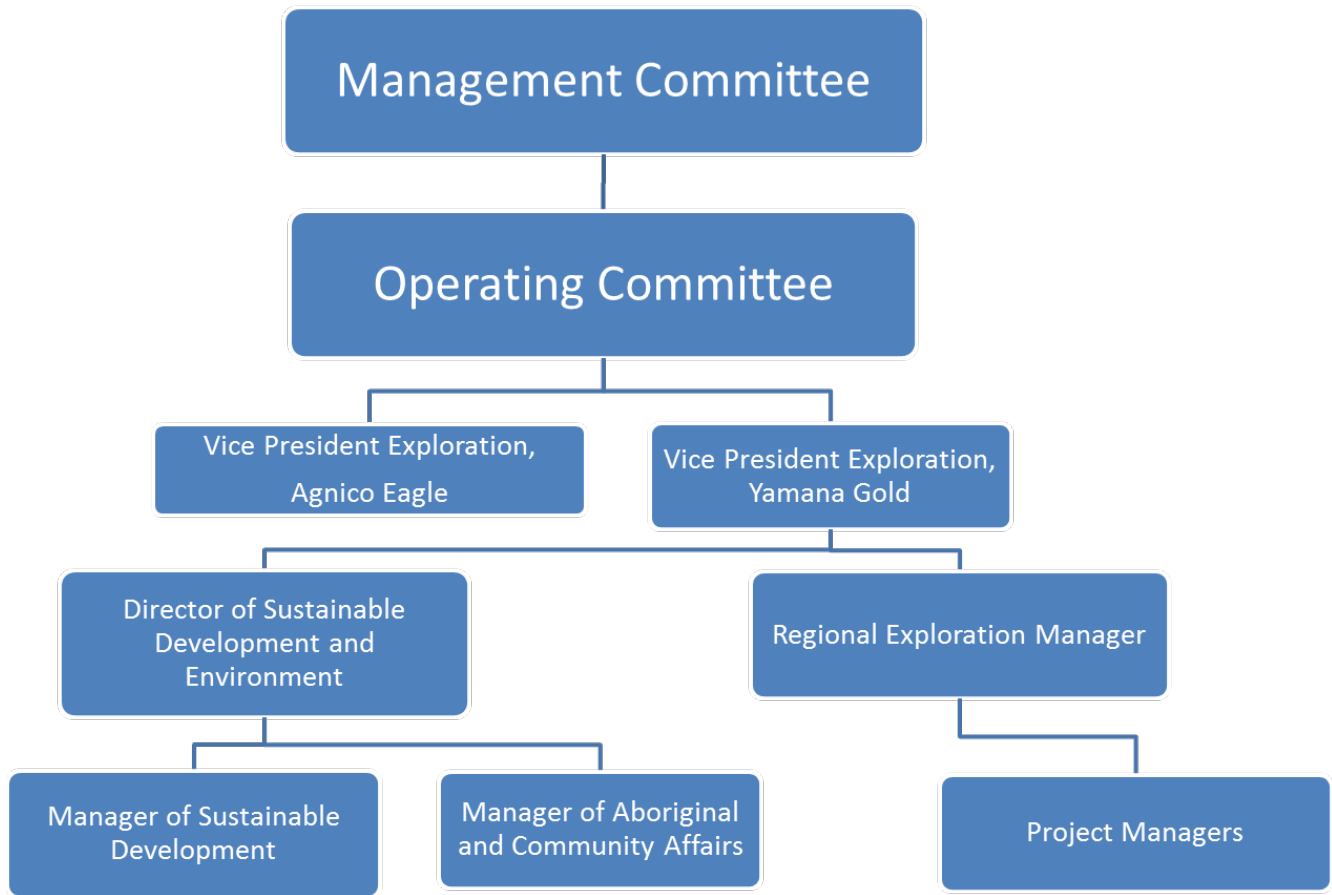
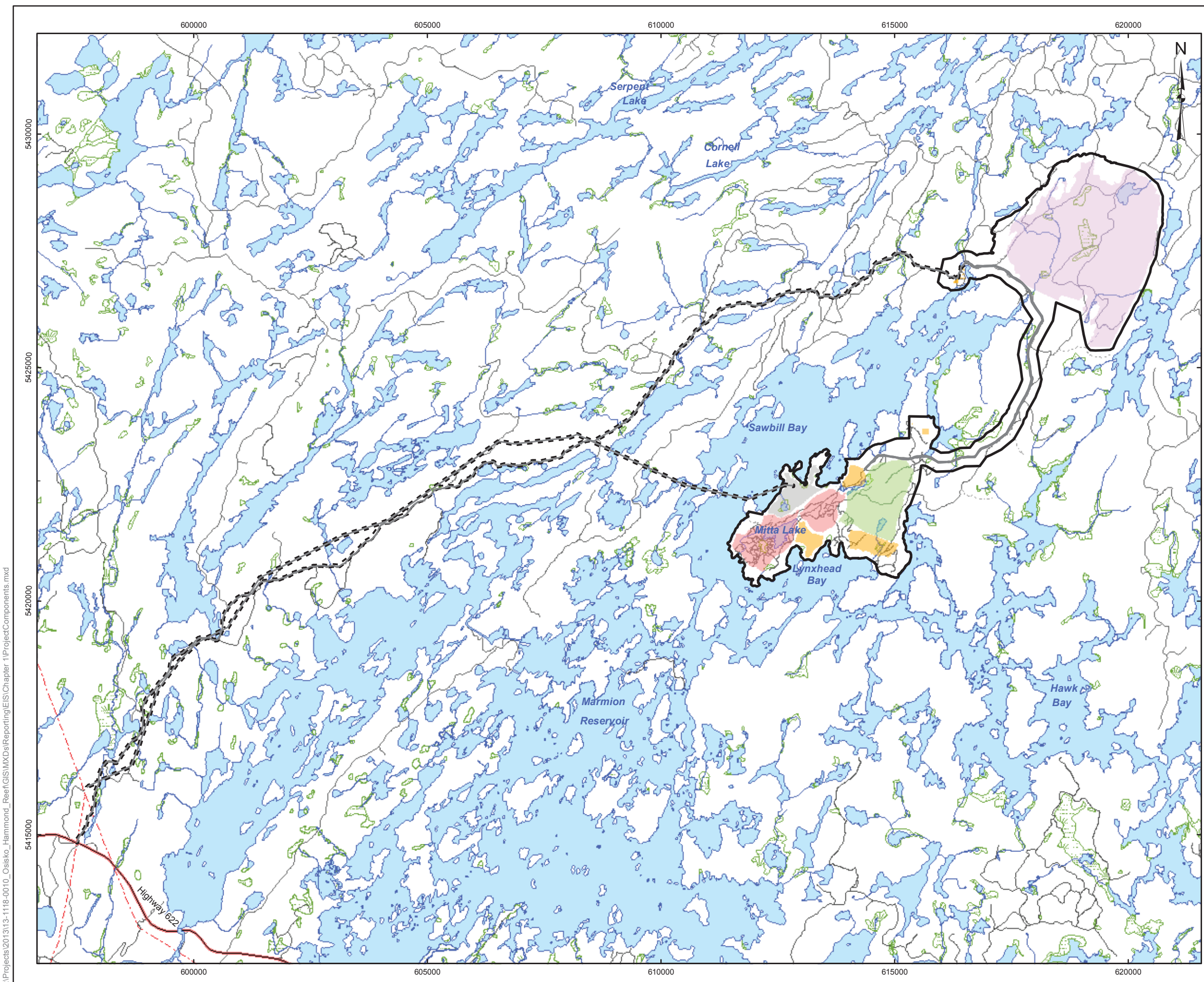


Figure 1-2: CMC Corporate Organization (Revised for Version 3 EIS/EA to reflect change in ownership)

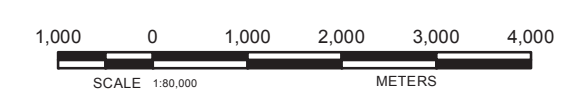


**LEGEND**

- Provincial Highway
- Road
- - - Power Transmission Line
- River/Stream
- Lake
- Wetland
- Linear Infrastructure
- Mine
- Waste Rock Management Facility
- Ore Processing Facility
- Tailings Management Facility
- Support and Ancillary Infrastructure
- Linear Infrastructure Study Area
- Mine Study Area

**REFERENCE**

Base Data - Provided by OSISKO Hammond Reef Gold Project Ltd.  
 Base Data - MNR NRVIS, obtained 2004  
 Produced by Golder Associates Ltd under licence from  
 Ontario Ministry of Natural Resources, © Queens Printer 2008  
 Projection: Transverse Mercator Datum: NAD 83 Coordinate System: UTM Zone 15N



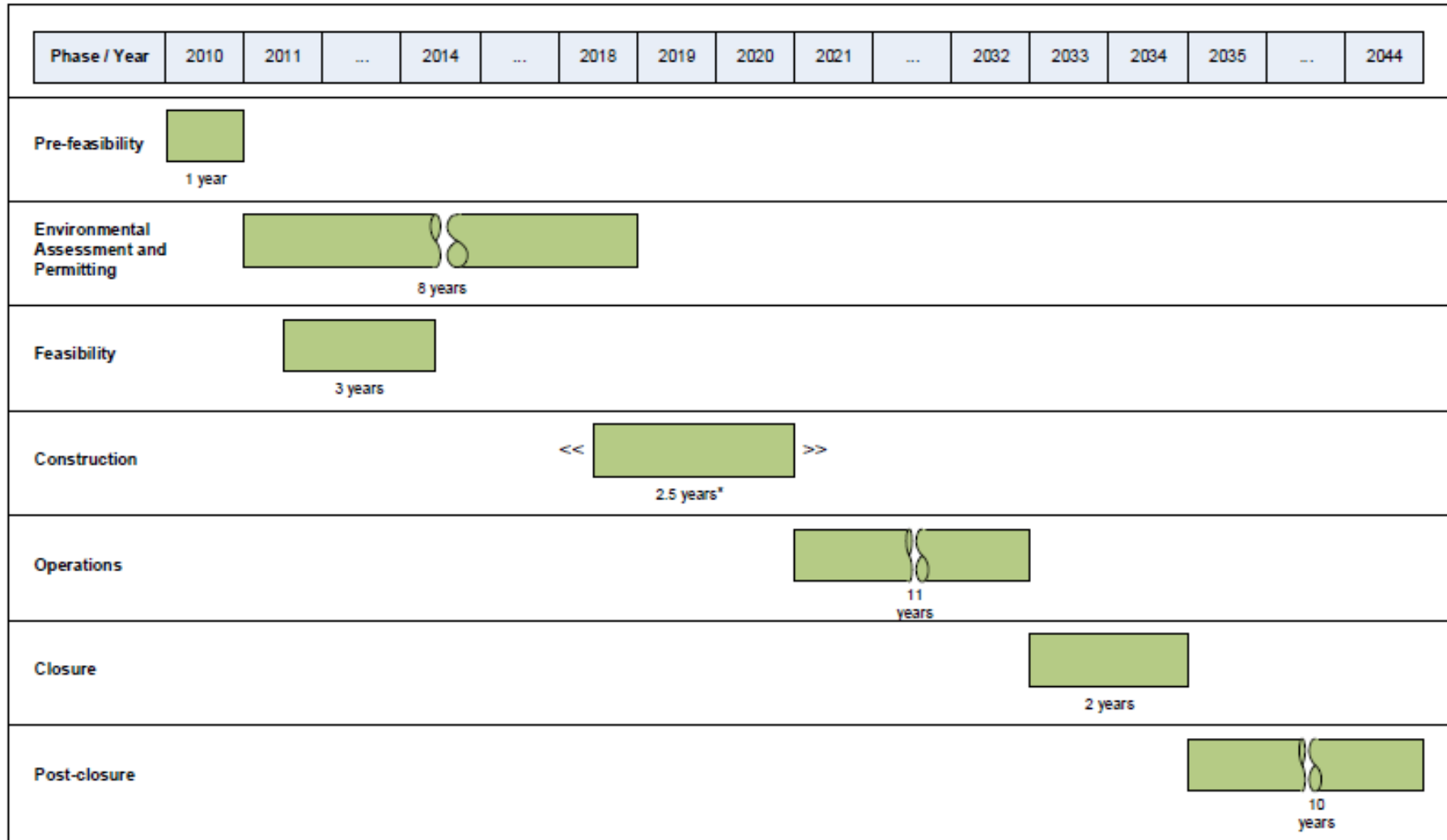
<b>PROJECT</b>	HAMMOND REEF GOLD PROJECT ATIKOKAN, ONTARIO, CANADA		
<b>TITLE</b>	<b>MINE STUDY AREA AND LINEAR INFRASTRUCTURE STUDY AREA</b>		
 Golder Associates Mississauga, Ontario	PROJECT NO. 13-1118-0010	SCALE AS SHOWN	VERSION 2
	DESIGN CGE 14 Nov. 2008		
	GIS JO 2 Dec. 2013		
	CHECK SP 2 Dec. 2013		
	REVIEW SP 2 Dec. 2013		

**FIGURE: 1-3**

G:\Projects\2013\13-1118-0010\_Osisko\_Hammond\_Reef\GIS\MapDocs\Reporting\EIS\Chapter 1\ProjectComponents.mxd



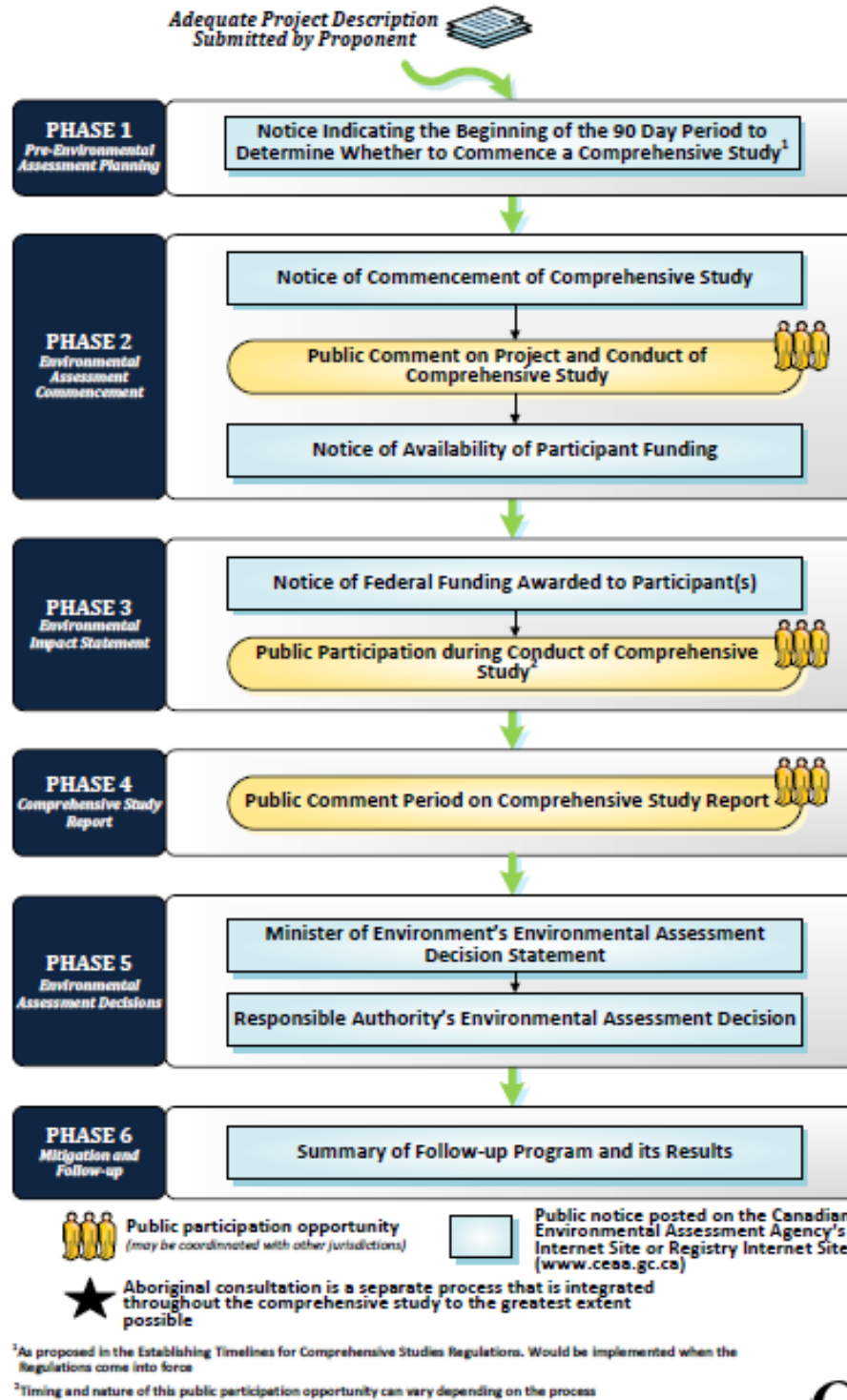
**AMENDED EIS/EA REPORT  
 CHAPTER 1: INTRODUCTION  
 VERSION 3**



\* Initiation of Construction Phase dependent on price of gold.

Figure 1-4: Hammond Reef Gold Project Simplified Schedule (Revised for Version 3 EIS/EA)

**AMENDED EIS/EA REPORT  
 CHAPTER 1: INTRODUCTION  
 VERSION 3**



Source: CEA Agency 2011.

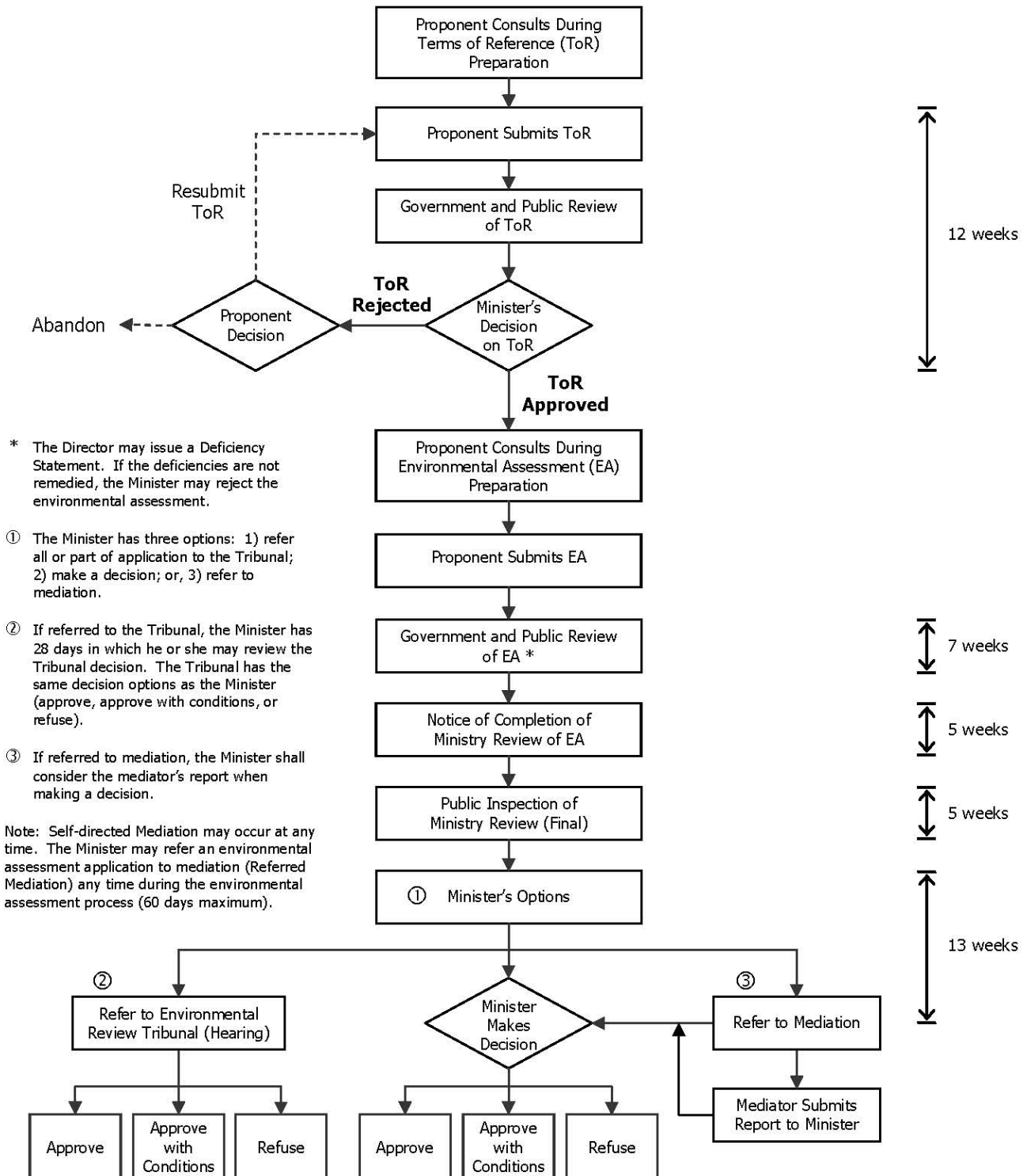
Figure 1-5: Canadian Environmental Assessment Agency Comprehensive Study Process



**AMENDED EIS/EA REPORT  
 CHAPTER 1: INTRODUCTION  
 VERSION 3**



**Prescribed Deadlines  
 (Ontario Regulation 616/98)**



Source: MOE EAB.

Figure 1-6: Ontario Provincial Individual Environmental Assessment Process



**AMENDED EIS/EA REPORT  
CHAPTER 1: INTRODUCTION  
VERSION 3**

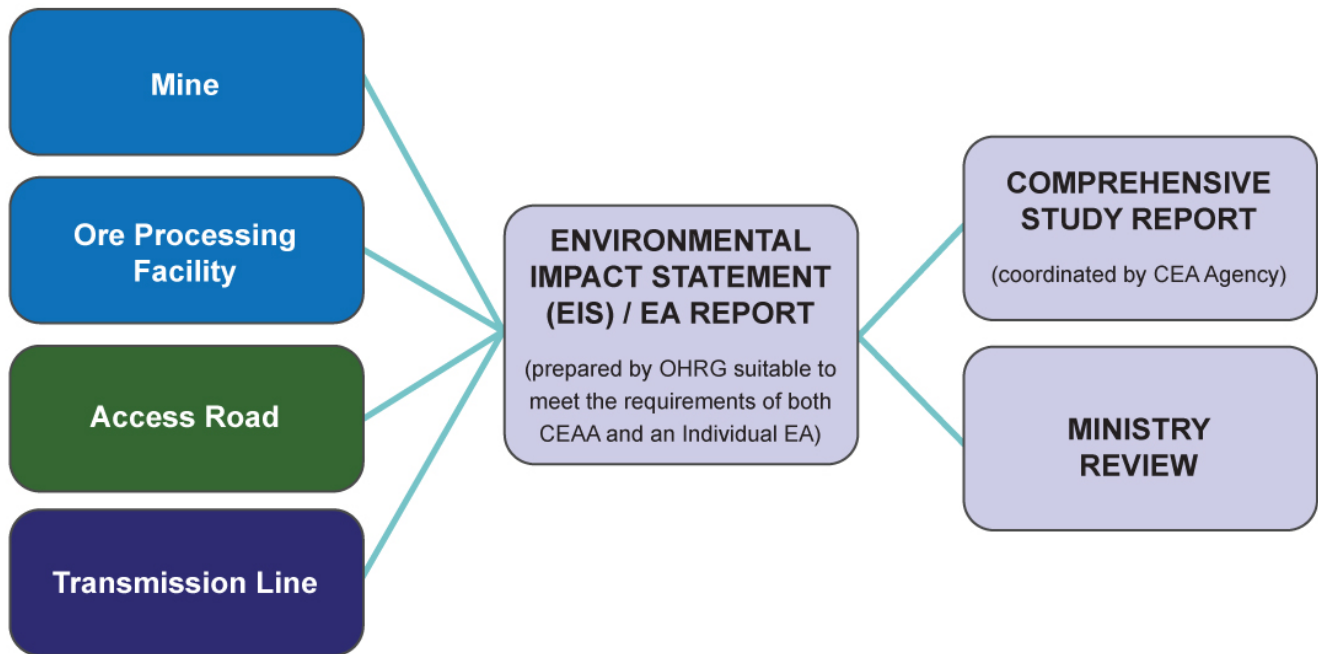


Figure 1-7: Environmental Assessment Integration Approach

**AMENDED EIS/EA REPORT  
 CHAPTER 1: INTRODUCTION  
 VERSION 3**

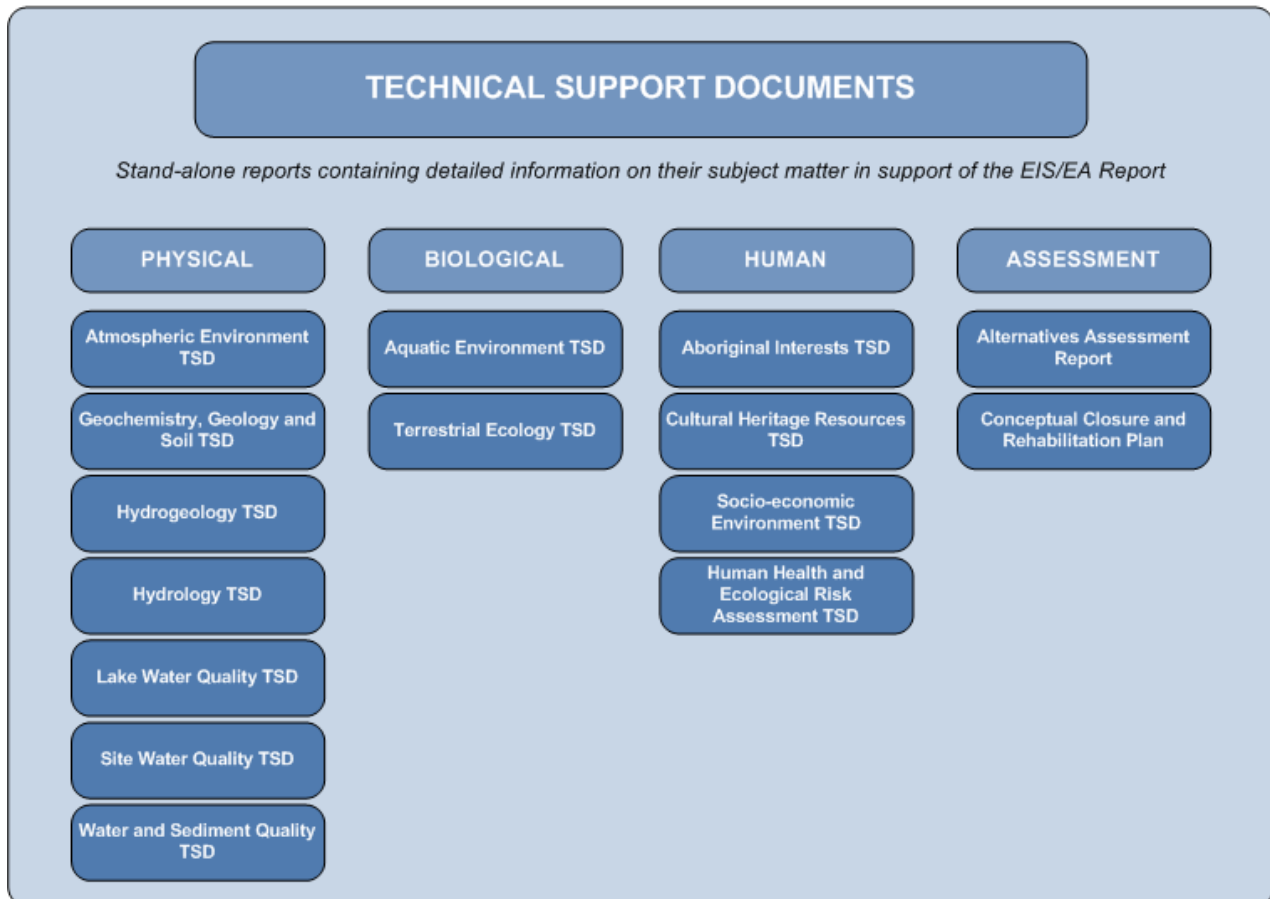
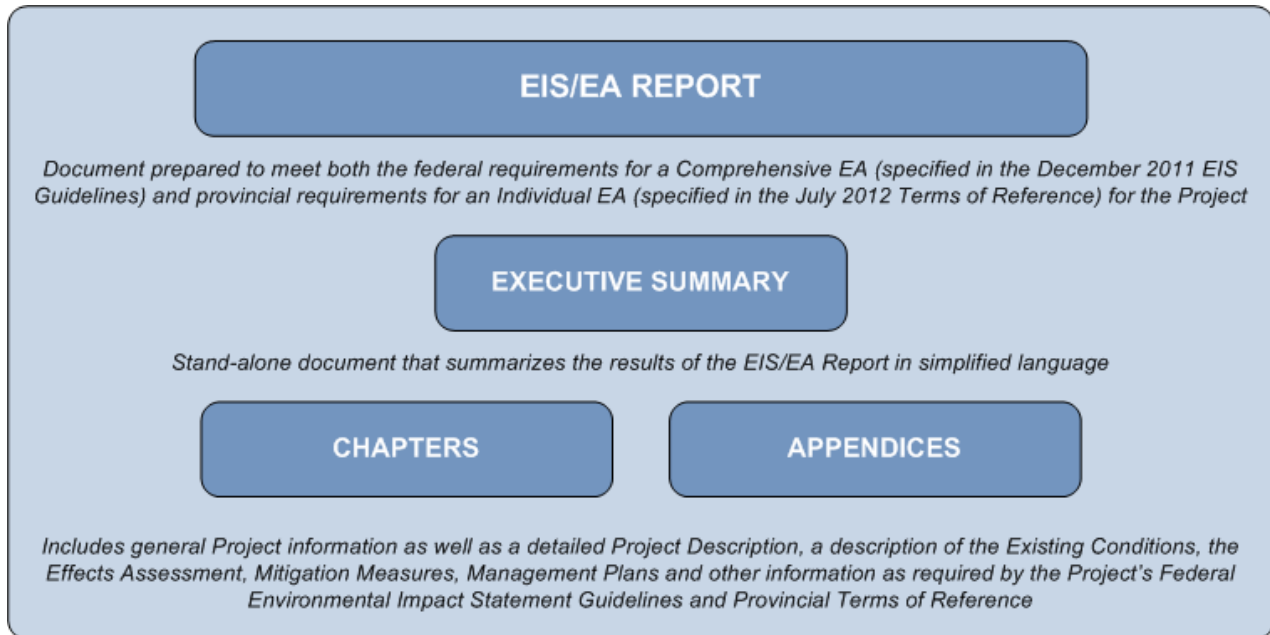


Figure 1-8: Hammond Reef Gold Project Documentation