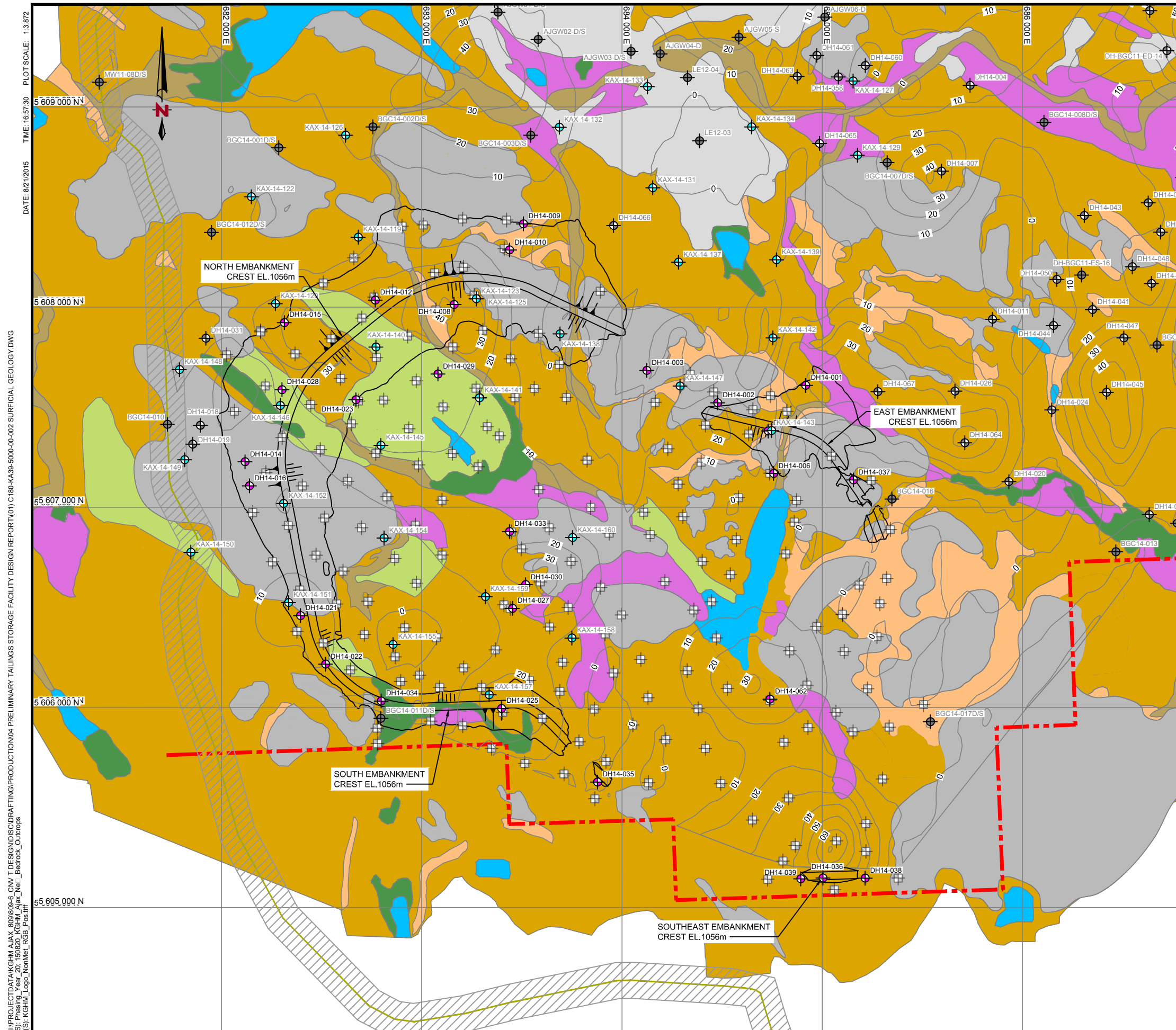


Appendix 3-D (part 2)

Tailings Storage Facility Design Report: Drawings

AJAX PROJECT

**Environmental Assessment Certificate Application / Environmental Impact Statement
for a Comprehensive Study**



LEGEND:

- RE-ALIGNED KINDER MORGAN PIPELINE
- TEST PITS WITHIN TSF AREA
- MINE PROPERTY BOUNDARY
- KP GEOTECHNICAL DRILLHOLES (TSF AREA)
- MONITORING WELLS BY OTHERS
- CONDEMNATION DRILLHOLES
- GEOTECHNICAL DRILLHOLES BY OTHERS
- UNCONSOLIDATED OVERBURDEN THICKNESS CONTOURS

GEOLOGICAL MAP LEGEND:

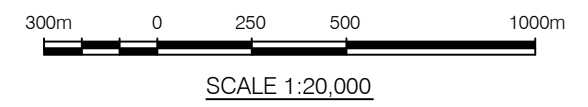
- ANTHROPOGENIC MINE ROCK
- ORGANIC
- EOLIAN SEDIMENT
- COLUVIUM
- ALLUVIUM
- FLUVIAL FAN
- GLACIO FLUVIAL SAND
- LAKE DEPOSIT
- GLACIAL TILL
- WEATHERED BEDROCK

NOTES:

1. TEST PITS COMPLETED BY OTHERS.

REFERENCES:

1. COORDINATE GRID IS UTM NAD83 ZONE 10.
2. CONTOUR INTERVAL IS 10 METRES.



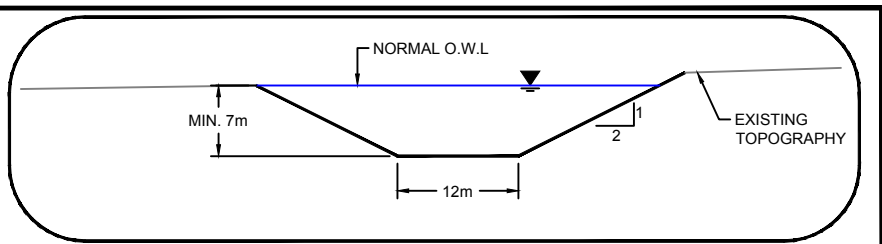
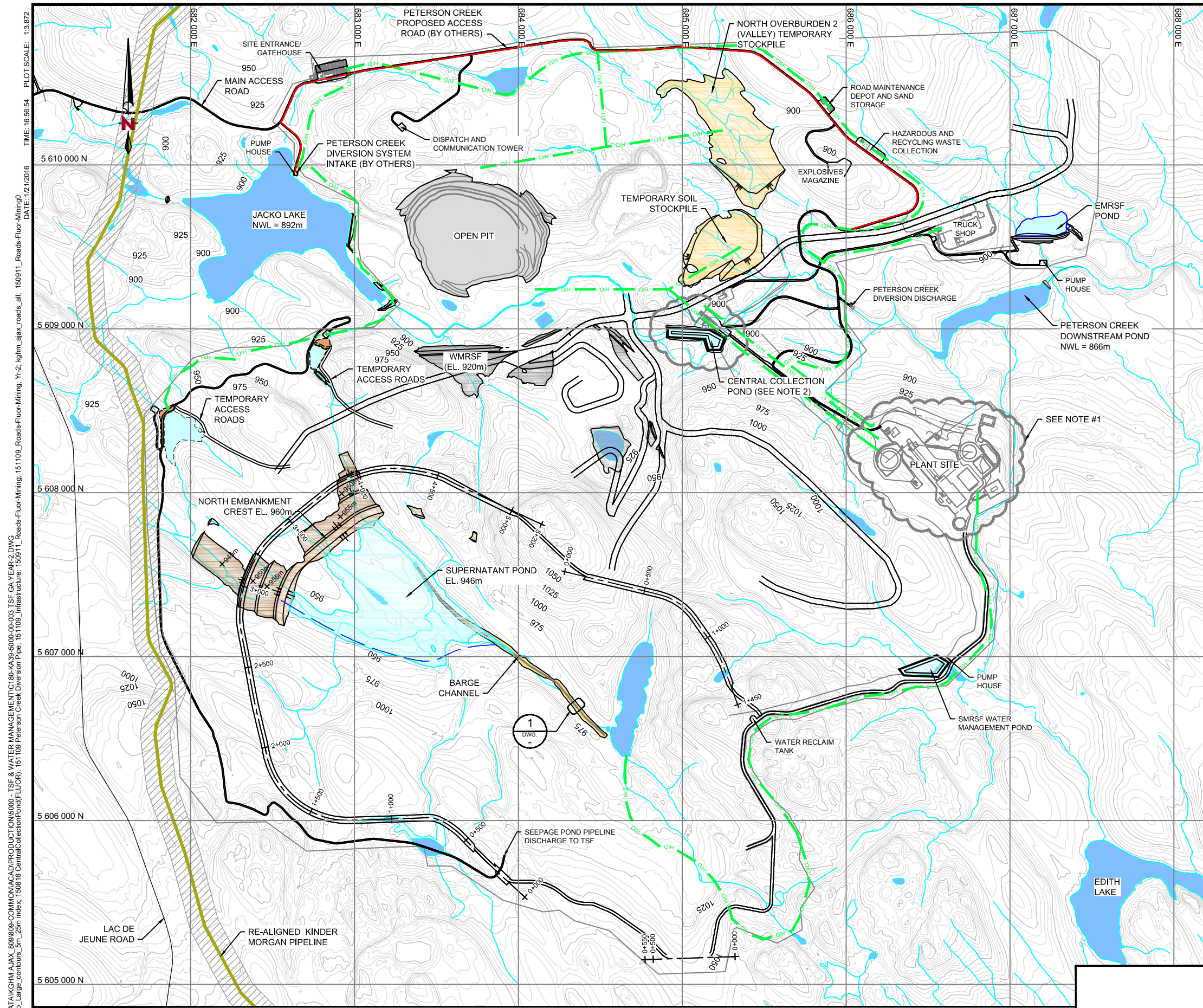
FILENAME: I:\PROJECTS\KACHM\AJAX_8000000_6_CNV\T\DESIGN\SC\DRIFTING\PRODUCTION\04 PRELIMINARY TAILINGS STORAGE FACILITY DESIGN REPORT\01 C180-KA39-5000-00-002 SURFICIAL GEOLOGY.DWG
 XREF FILE(S): P:\315\2015\0820_KGHM_Ajax_Net_Bedrock_Outcrops
 IMAGE FILE(S): KGHM_Logo_NonMet_RGB_Pos.tif

PLAN:

REV.	DATE	DESCRIPTION	DWN	DSG	CHK	APR
0	2015-08-21	ISSUED AS FINAL	SC	MD	CK	SE
A	2015-07-31	ISSUED FOR REVIEW	SC	MD	CK	SE

AS A MUTUAL PROTECTION TO OUR CLIENT, THE PUBLIC, AND OURSELVES, ALL REPORTS AND DRAWINGS ARE SUBMITTED FOR THE CONFIDENTIAL INFORMATION OF OUR CLIENT FOR A SPECIFIC PROJECT. AUTHORIZATION FOR ANY USE OR PUBLICATION OF THIS REPORT OR ANY DATA, STATEMENTS, CONCLUSIONS OR ABSTRACTS FROM OR BEYONDING OUR REPORTS AND DRAWINGS, THROUGH ANY FORM OF PRINT OR ELECTRONIC MEDIA, INCLUDING WITHOUT LIMITATION, POSTING OR REPRODUCTION OF SAME ON ANY WEBSITE, IS RESERVED PENDING NORWEST'S WRITTEN APPROVAL. IF THIS REPORT IS ISSUED IN AN ELECTRONIC FORMAT, AN ORIGINAL PAPER COPY IS ON FILE AT NORWEST CORPORATION AND THAT COPY IS THE PRIMARY REFERENCE WITH PRECEDENCE OVER ANY ELECTRONIC COPY OF THE DOCUMENT, OR ANY EXTRACTS FROM OUR DOCUMENTS PUBLISHED BY OTHERS.

	KGHM AJAX MINING INC.	
	AJAX PROJECT TAILINGS STORAGE FACILITY SURFICIAL GEOLOGY	
SCALE: 1:20000 DATE: 2015-08-21 CO-ORD. SYS.: UTM NAD 83 ZONE 10 DRWN BY: SC [REV'D BY: CK] DSGN BY: MD [APP'D BY: SE]	DRAWING NO.: C180-KA39-5000-00-002	REV.: 0



BARGE CHANNEL DETAIL 1
SCALE B DWG.

LEGEND:

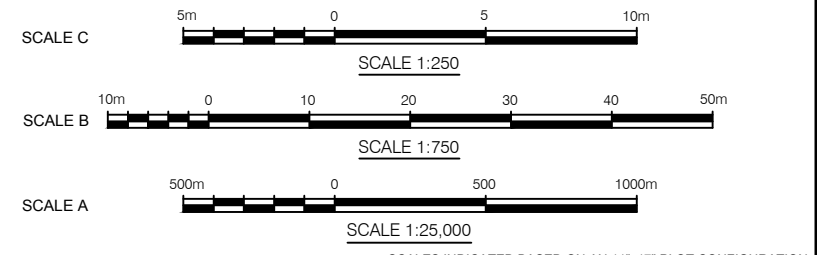
- RE-ALIGNED KINDER MORGAN PIPELINE
- OPEN PIT (NOVEMBER 2015 MINE PLAN)
- PROPOSED HAUL ROADS (BY FLUOR)
- 25KV TRANSMISSION LINE (BY FLUOR)
- + 0+000 ULTIMATE EMBANKMENT CREST CHAINAGE
- TAILINGS (BEACH ABOVE WATER)
- SUPERNATANT/CONTACT WATER POND
- EXISTING WATER BODIES
- COMPACTED MINE ROCK
- MINE ROCK BUTTRESS
- TEMPORARY STOCKPILE

NOTES:

1. PLANT SITE DESIGNED BY FLUOR.
2. CENTRAL COLLECTION POND DESIGNED BY FLUOR (AUG 18, 2015).
3. BARGE DESIGN SPECIFICATIONS PROVIDED BY FLUOR.
4. WATER MANAGEMENT PLAN IS PROVIDED IN DRAWING C180-KA38-5500-10-102.

REFERENCES:

1. GENERAL SITE INFRASTRUCTURE AND ACCESS ROADS BASED ON LAYOUTS PROVIDED BY KGHM ON NOVEMBER 6, 2015 (KGHM-GC-008835).
2. ALL DESIGN DATA COORDINATES PROVIDED ARE IN METRES.
3. TOPOGRAPHY DATA BASED ON LIDAR PROVIDED BY KGHM (APRIL 2013).
4. KINDER MORGAN PIPELINE ALIGNMENTS PROVIDED BY KGHM ON NOVEMBER 4, 2014.
5. TAILINGS WHERE SHOWN ON THE STAGED DRAWING IS BASED ON THE FEED TONNAGE SCHEDULE FOR THE AJAX MINE PROVIDED BY KGHM ON OCTOBER 5, 2015.
6. OPEN PIT AND MRSF LAYOUTS PRESENTED IN THE DRAWING ARE BASED ON THE AJAX MINE SCHEDULE PROVIDED BY KGHM ON NOVEMBER 6, 2015.



SCALES INDICATED BASED ON AN 11"x17" PLOT CONFIGURATION

PLAN
SCALE A

REV.	DATE	DESCRIPTION	DWN	DSG	CHK	APR
2	2016-01-15	PERMIT LEVEL REPORT	SC	CK	CK	SE
1	2015-11-27	DRAFT - PERMIT LEVEL REPORT	SC	CK	CK	SE
0	2015-08-21	ISSUED AS FINAL	SC	MD	CK	SE
A	2015-07-31	ISSUED FOR REVIEW	SC	MD	CK	SE

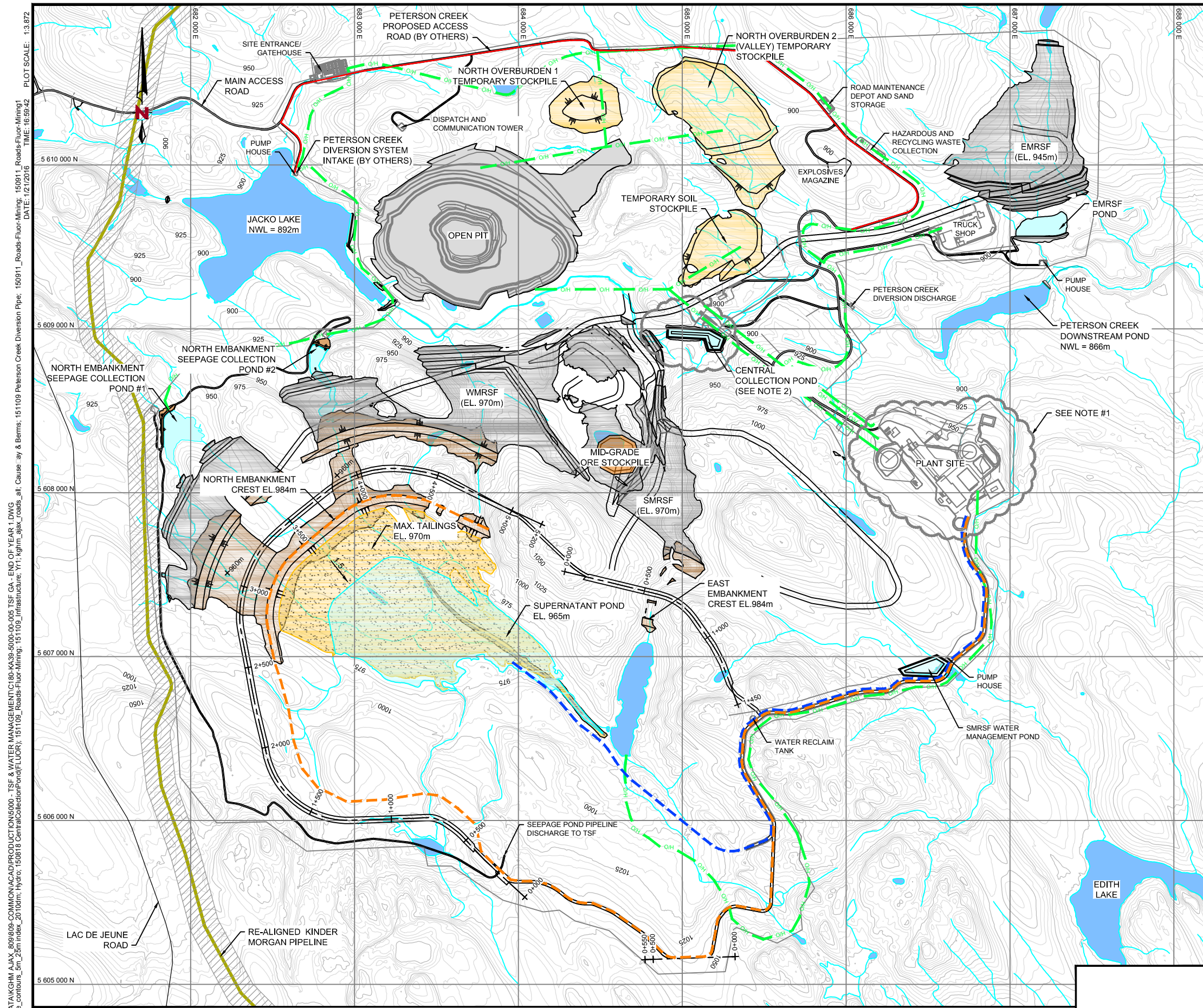
ENGINEER'S SEAL

AS A MUTUAL PROTECTION TO OUR CLIENT, THE PUBLIC, AND OURSELVES, ALL REPORTS AND DRAWINGS ARE SUBMITTED FOR THE CONFIDENTIAL INFORMATION OF OUR CLIENT FOR A SPECIFIC PROJECT. AUTHORIZATION FOR ANY USE AND/OR PUBLICATION OF THIS REPORT OR ANY DATA, STATEMENTS, CONCLUSIONS OR ABSTRACTS FROM OR BEYONDING OUR REPORTS AND DRAWINGS, THROUGH ANY FORM OF PRINT OR ELECTRONIC MEDIA, INCLUDING WITHOUT LIMITATION, POSTING OR REPRODUCTION OF SAME ON ANY WEBSITE, IS RESERVED PENDING NORWEST'S WRITTEN APPROVAL. IF THIS REPORT IS ISSUED IN AN ELECTRONIC FORMAT, AN ORIGINAL PAPER COPY IS ON FILE AT NORWEST CORPORATION AND THAT COPY IS THE PRIMARY REFERENCE WITH PRECEDENCE OVER ANY ELECTRONIC COPY OF THE DOCUMENT, OR ANY EXTRACTS FROM OUR DOCUMENTS PUBLISHED BY OTHERS.

SCALE: AS SHOWN
DATE: 2016-01-15
CO-ORD. SYS.: UTM-NAD83 ZONE 10
DRWN BY: SC REV'D BY: CK
DSGN BY: CK APP'D BY: SE

KGHM KGHM AJAX MINING INC.
AJAX PROJECT
TAILINGS AND WATER MANAGEMENT FACILITIES
GENERAL ARRANGEMENT
END OF YEAR -2

NORWEST DRAWING NO.: C180-KA39-5000-00-003 REV.: 2

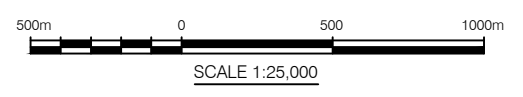


LEGEND:

- TAILINGS (BEACH ABOVE WATER)
- SUPERNATANT/CONTACT WATER POND
- EXISTING WATER BODIES
- COMPACTED MINE ROCK
- MINE ROCK BUTTRISS
- MINE ROCK STORAGE FACILITY
- ORE STOCKPILE
- PERMANENT STOCKPILE
- TEMPORARY STOCKPILE
- RE-ALIGNED KINDER MORGAN PIPELINE (BY KGHM)
- OPEN PIT (NOVEMBER 2015 MINE PLAN)
- PROPOSED HAUL ROADS (BY FLUOR)
- ULTIMATE TAILINGS PIPELINE CORRIDOR (BY FLUOR)
- RECLAIM PIPELINE (BY FLUOR)
- 25KV TRANSMISSION LINE (BY KGHM)
- +0+000 ULTIMATE EMBANKMENT CREST CHAINAGE

- NOTES:**
- PLANT SITE DESIGNED BY FLUOR.
 - CENTRAL COLLECTION POND DESIGNED BY FLUOR (AUG 18, 2015).
 - TAILINGS AND RECLAIM PIPELINE LAYOUTS WERE ESTIMATED BY NORWEST. THESE PIPELINE ALIGNMENTS WILL BE FINALIZED BY FLUOR.
 - TAILINGS BEACHES ARE SLOPED AT APPROXIMATELY 1.5:1.

- REFERENCES:**
- GENERAL SITE INFRASTRUCTURE AND ACCESS ROADS BASED ON LAYOUTS PROVIDED BY KGHM ON NOVEMBER 6, 2015 (KGHM-GC-008835).
 - ALL DESIGN DATA COORDINATES PROVIDED ARE IN METRES.
 - TOPOGRAPHY DATA BASED ON LIDAR PROVIDED BY KGHM (APRIL 2013).
 - KINDER MORGAN PIPELINE ALIGNMENTS PROVIDED BY KGHM ON NOVEMBER 4, 2014.
 - TAILINGS WHERE SHOWN ON THE STAGED DRAWING IS BASED ON THE FEED TONNAGE SCHEDULE FOR THE AJAX MINE PROVIDED BY KGHM ON OCTOBER 5, 2015.
 - OPEN PIT AND MRSF LAYOUTS PRESENTED IN THE DRAWING ARE BASED ON THE AJAX MINE SCHEDULE PROVIDED BY KGHM ON NOVEMBER 6, 2015.



SCALES INDICATED BASED ON AN 11"x17" PLOT CONFIGURATION

FILENAME: I:\PROJECTS\AJAX_800\09_COMMON\ACAD\PRODUCTION\000_TSF & WATER MANAGEMENT\180-KA39-5000-00-005_TSF_GA_END_OF_YEAR_1.DWG
 XREF FILE(S): Topo_Large_contours_5m_25m_index_2010.dwg; Hydro: 150818_CentralCollectionPond(FLUOR); 151109_Infrastructure; 151109_Roads-Fluor-Mining; 151109_Roads-Fluor-Mining; 151109_Peterson Creek Diversion Pipe; 150911_Roads-Fluor-Mining
 IMAGE FILE(S):
 DATE: 1/2/2016 TIME: 16:59:42 PLOT SCALE: 1:3.872

PLAN

REV.	DATE	DESCRIPTION	DWN	DSG	CHK	APR
2	2016-01-15	PERMIT LEVEL REPORT	SC	CK	CK	SE
1	2015-11-27	DRAFT - PERMIT LEVEL REPORT	SC	CK	CK	SE
0	2015-08-21	ISSUED AS FINAL	SC	MD	CK	SE
A	2015-07-31	ISSUED FOR REVIEW	SC	MD	CK	SE

ENGINEER'S SEAL

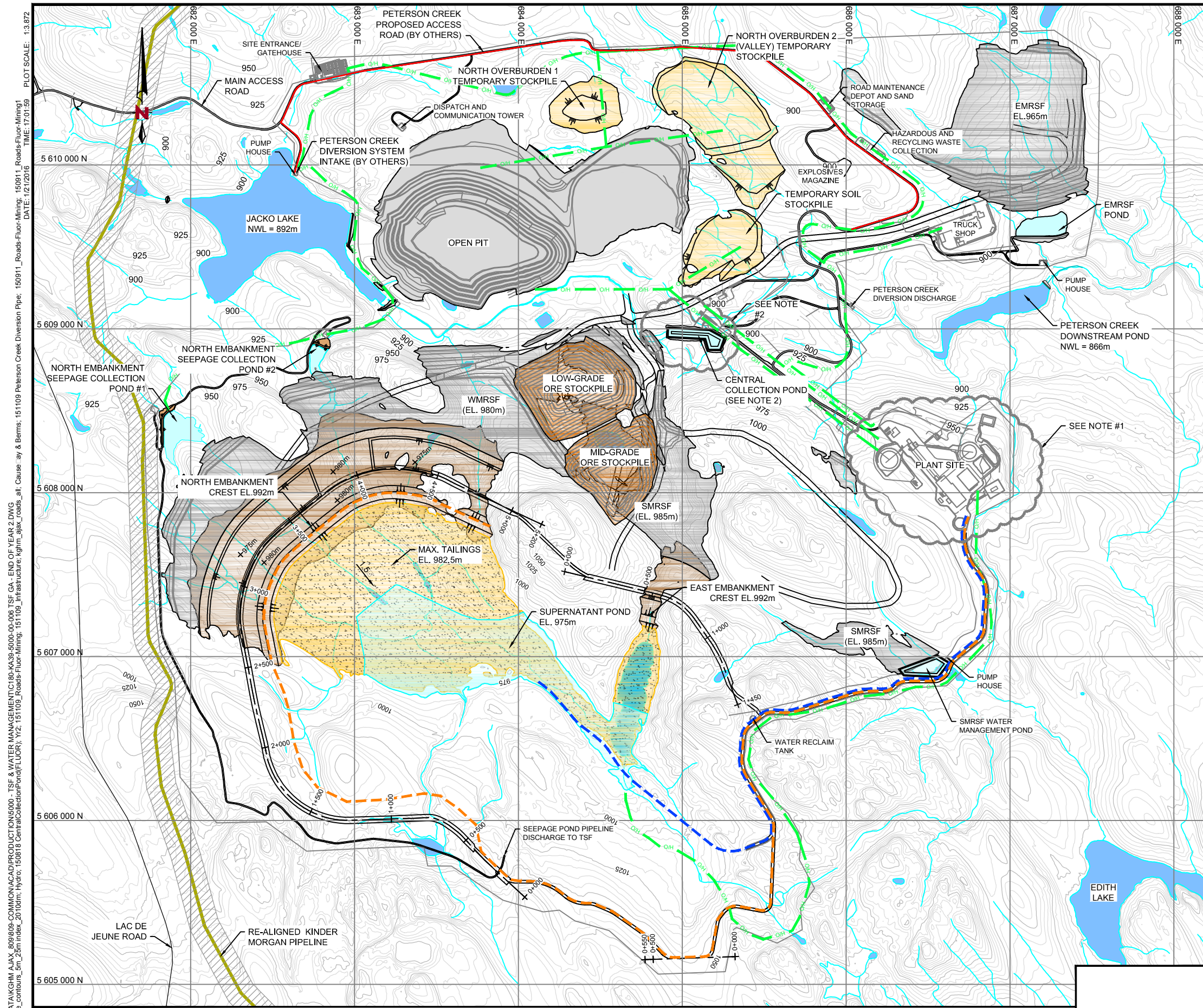
AS A MUTUAL PROTECTION TO OUR CLIENT, THE PUBLIC, AND OURSELVES, ALL REPORTS AND DRAWINGS ARE SUBMITTED FOR THE CONFIDENTIAL INFORMATION OF OUR CLIENT FOR A SPECIFIC PROJECT. AUTHORIZATION FOR ANY USE AND/OR PUBLICATION OF THIS REPORT OR ANY DATA, STATEMENTS, CONCLUSIONS OR ABSTRACTS FROM OR BEARING OUR REPORTS AND DRAWINGS, THROUGH ANY FORM OF PRINT OR ELECTRONIC MEDIA, INCLUDING WITHOUT LIMITATION, POSTING OR REPRODUCTION OF SAME ON ANY WEBSITE, IS RESERVED PENDING NORWEST'S WRITTEN APPROVAL. IF THIS REPORT IS ISSUED IN AN ELECTRONIC FORMAT, AN ORIGINAL PAPER COPY IS ON FILE AT NORWEST CORPORATION AND THAT COPY IS THE PRIMARY REFERENCE WITH PRECEDENCE OVER ANY ELECTRONIC COPY OF THE DOCUMENT, OR ANY EXTRACTS FROM OUR DOCUMENTS PUBLISHED BY OTHERS.

SCALE: AS SHOWN
 DATE: 2016-01-15
 CO-ORD. SYS.: UTM-NAD83 ZONE 10
 DRWN BY: SC REV'D BY: CK
 DSGN BY: CK APP'D BY: SE

KGHM **KGHM AJAX MINING INC.**

AJAX PROJECT
 TAILINGS AND WATER MANAGEMENT FACILITIES
 GENERAL ARRANGEMENT
 END OF YEAR 1

NORWEST DRAWING NO.: C180-KA39-5000-00-005 REV.: 2

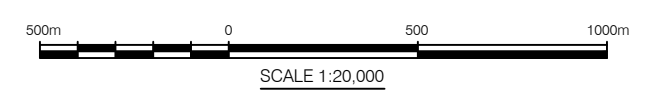


LEGEND:

- TAILINGS (BEACH ABOVE WATER)
- SUPERNATANT/CONTACT WATER POND
- EXISTING WATER BODIES
- COMPACTED MINE ROCK
- MINE ROCK BUTTRISS
- MINE ROCK STORAGE FACILITY
- ORE STOCKPILE
- PERMANENT STOCKPILE
- TEMPORARY STOCKPILE
- RE-ALIGNED KINDER MORGAN PIPELINE (BY KGHM)
- OPEN PIT (NOVEMBER 2015 MINE PLAN)
- PROPOSED HAUL ROADS (BY FLUOR)
- ULTIMATE TAILINGS PIPELINE CORRIDOR (BY FLUOR)
- RECLAIM PIPELINE (BY FLUOR)
- 25KV TRANSMISSION LINE (BY KGHM)
- + 0+000 ULTIMATE EMBANKMENT CREST CHAINAGE

- NOTES:**
1. PLANT SITE DESIGNED BY FLUOR.
 2. CENTRAL COLLECTION POND DESIGNED BY FLUOR (AUG 18, 2015).
 3. TAILINGS AND RECLAIM PIPELINE LAYOUTS WERE ESTIMATED BY NORWEST. THESE PIPELINE ALIGNMENTS WILL BE FINALIZED BY FLUOR.
 4. TAILINGS BEACHES ARE SLOPED AT APPROXIMATELY 1.5:1.

- REFERENCES:**
1. GENERAL SITE INFRASTRUCTURE AND ACCESS ROADS BASED ON LAYOUTS PROVIDED BY KGHM ON NOVEMBER 6, 2015 (KGHM-GC-008835).
 2. ALL DESIGN DATA COORDINATES PROVIDED ARE IN METRES.
 3. TOPOGRAPHY DATA BASED ON LIDAR PROVIDED BY KGHM (APRIL 2013).
 4. KINDER MORGAN PIPELINE ALIGNMENTS PROVIDED BY KGHM ON NOVEMBER 4, 2014.
 5. TAILINGS WHERE SHOWN ON THE STAGED DRAWING IS BASED ON THE FEED TONNAGE SCHEDULE FOR THE AJAX MINE PROVIDED BY KGHM ON OCTOBER 5, 2015.
 6. OPEN PIT AND MRSF LAYOUTS PRESENTED IN THE DRAWING ARE BASED ON THE AJAX MINE SCHEDULE PROVIDED BY KGHM ON NOVEMBER 6, 2015.



SCALES INDICATED BASED ON AN 11"x17" PLOT CONFIGURATION

FILENAME: I:\PROJECTS\AJAX_MINE\COMMON\ACAD\PRODUCTION\000_TSF & WATER MANAGEMENT\180-KA39-5000-00-008_TSF_GA_END_OF_YEAR_2.DWG
 XREF FILE(S): Topo_Large_contours_5m_25m_index_2010.dwg; Hydro: 150818_CentralCollectionPond(FLUOR)_Y2; 151109_Roads-Fluor-Mining; 151109_Infrastructure_kghm_ajax_roads_all_Causeway & Berms; 151109_Peterson Creek Diversion Pipe; 150911_Roads-Fluor-Mining; 150911_Roads-Fluor-Mining
 DATE: 1/2/2016 TIME: 17:01:59 PLOT SCALE: 1:3.872

PLAN

REV.	DATE	DESCRIPTION	DWN	DSG	CHK	APR
2	2016-01-15	PERMIT LEVEL REPORT	SC	CK	CK	SE
1	2015-11-27	DRAFT - PERMIT LEVEL REPORT	SC	CK	CK	SE
0	2015-08-21	ISSUED AS FINAL	SC	MD	CK	SE
A	2015-07-31	ISSUED FOR REVIEW	SC	MD	CK	SE

ENGINEER'S SEAL

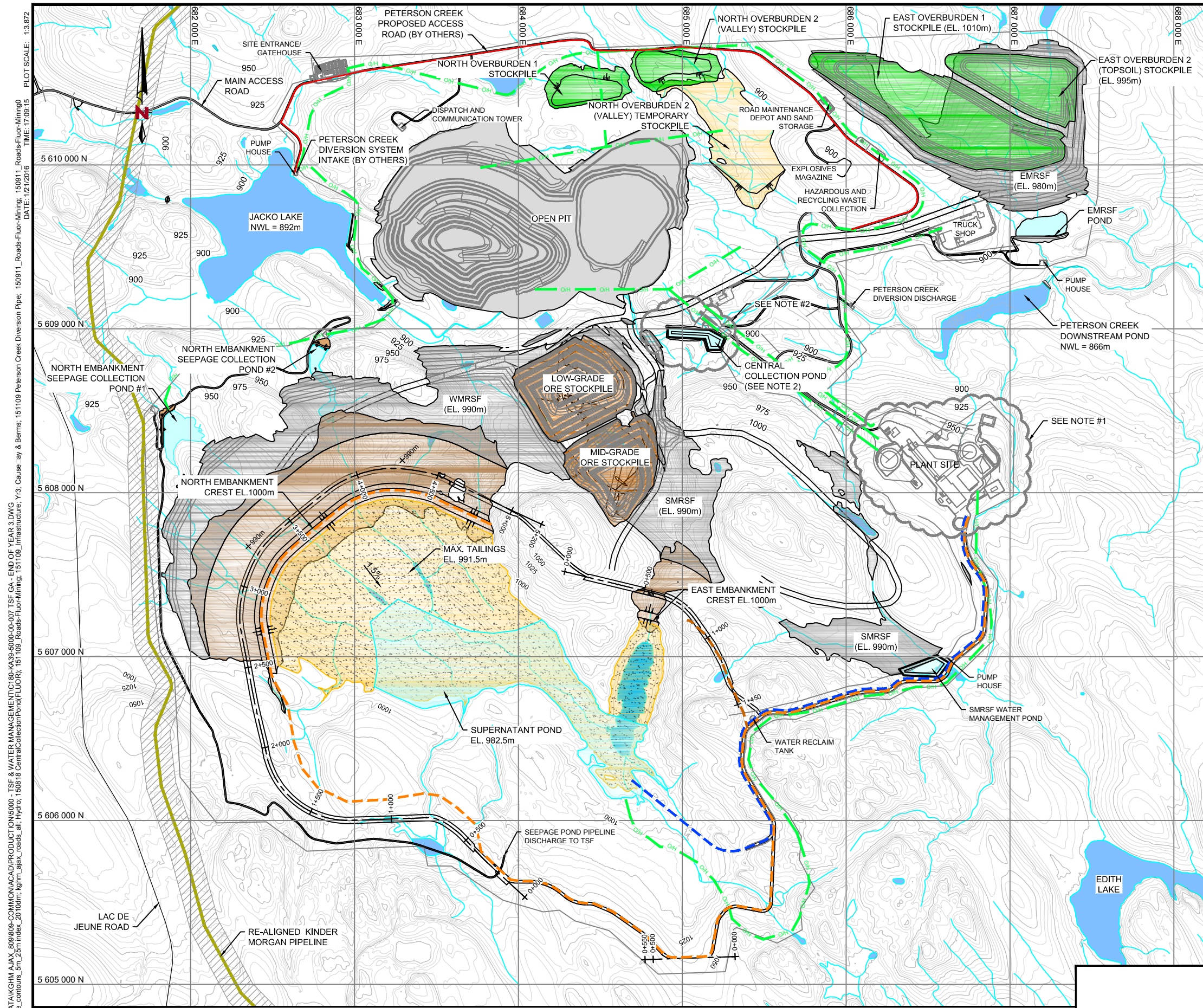
AS A MUTUAL PROTECTION TO OUR CLIENT, THE PUBLIC, AND OURSELVES, ALL REPORTS AND DRAWINGS ARE SUBMITTED FOR THE CONFIDENTIAL INFORMATION OF OUR CLIENT FOR A SPECIFIC PROJECT. AUTHORIZATION FOR ANY USE OR PUBLICATION OF THIS REPORT OR ANY DATA, STATEMENTS, CONCLUSIONS OR ABSTRACTS FROM OR REGARDING OUR REPORTS AND DRAWINGS, THROUGH ANY FORM OF PRINT OR ELECTRONIC MEDIA, INCLUDING WITHOUT LIMITATION, POSTING OR REPRODUCTION OF SAME ON ANY WEBSITE, IS RESERVED PENDING NORWEST'S WRITTEN APPROVAL. IF THIS REPORT IS ISSUED IN AN ELECTRONIC FORMAT, AN ORIGINAL PAPER COPY IS ON FILE AT NORWEST CORPORATION AND THAT COPY IS THE PRIMARY REFERENCE WITH PRECEDENCE OVER ANY ELECTRONIC COPY OF THE DOCUMENT, OR ANY EXTRACTS FROM OUR DOCUMENTS PUBLISHED BY OTHERS.

SCALE: AS SHOWN
 DATE: 2016-01-15
 CO-ORD. SYS.: UTM-NAD83 ZONE 10
 DRWN BY: SC REV'D BY: CK
 DSGN BY: CK APP'D BY: SE

KGHM KGHM AJAX MINING INC.

AJAX PROJECT
 TAILINGS AND WATER MANAGEMENT FACILITIES
 GENERAL ARRANGEMENT
 END OF YEAR 2

NORWEST DRAWING NO.: C180-KA39-5000-00-006 REV.: 2

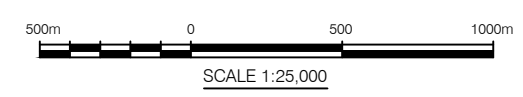


LEGEND:

- TAILINGS (BEACH ABOVE WATER)
- SUPERNATANT/CONTACT WATER POND
- EXISTING WATER BODIES
- COMPACTED MINE ROCK
- MINE ROCK BUTTRESS
- MINE ROCK STORAGE FACILITY
- ORE STOCKPILE
- PERMANENT STOCKPILE
- TEMPORARY STOCKPILE
- RE-ALIGNED KINDER MORGAN PIPELINE (BY KGHM)
- OPEN PIT (NOVEMBER 2015 MINE PLAN)
- PROPOSED HAUL ROADS (BY FLUOR)
- ULTIMATE TAILINGS PIPELINE CORRIDOR (BY FLUOR)
- RECLAIM PIPELINE (BY FLUOR)
- 25KV TRANSMISSION LINE (BY KGHM)
- + 0+000 ULTIMATE EMBANKMENT CREST CHAINAGE

- NOTES:**
1. PLANT SITE DESIGNED BY FLUOR.
 2. CENTRAL COLLECTION POND DESIGNED BY FLUOR (AUG 18, 2015).
 3. TAILINGS AND RECLAIM PIPELINE LAYOUTS WERE ESTIMATED BY NORWEST. THESE PIPELINE ALIGNMENTS WILL BE FINALIZED BY FLUOR.
 4. TAILINGS BEACHES ARE SLOPED AT APPROXIMATELY 1.5%.

- REFERENCES:**
1. GENERAL SITE INFRASTRUCTURE AND ACCESS ROADS BASED ON LAYOUTS PROVIDED BY KGHM ON NOVEMBER 6, 2015 (KGHM-GC-008835).
 2. ALL DESIGN DATA COORDINATES PROVIDED ARE IN METRES.
 3. TOPOGRAPHY DATA BASED ON LIDAR PROVIDED BY KGHM (APRIL 2013).
 4. KINDER MORGAN PIPELINE ALIGNMENTS PROVIDED BY KGHM ON NOVEMBER 4, 2014.
 5. TAILINGS WHERE SHOWN ON THE STAGED DRAWING IS BASED ON THE FEED TONNAGE SCHEDULE FOR THE AJAX MINE PROVIDED BY KGHM ON OCTOBER 5, 2015.
 6. OPEN PIT AND MRSF LAYOUTS PRESENTED IN THE DRAWING ARE BASED ON THE AJAX MINE SCHEDULE PROVIDED BY KGHM ON NOVEMBER 6, 2015.



SCALES INDICATED BASED ON AN 11"x17" PLOT CONFIGURATION

FILENAME: I:\PROJECTS\AJAX_800\800_COMMON\CAD\PRODUCTION\000_TSF & WATER MANAGEMENT\180_KA39-5000-00_007_TSF_GA_END OF YEAR 3.DWG
 XREF FILE(S): Topo_Large_contours_5m_25m_index_2010.dwg; kghm_ajax_roads_all; Hydro: 150818_CentralCollectionPond(FLUOR); 151109_Roads-Fluor-Mining; 151109_Infrastructure; Y3; Causeway & Berms; 151109_Peterson Creek Diversion Pipe; 150911_Roads-Fluor-Mining; 150911_Roads-Fluor-Mining
 DATE: 1/21/2016 TIME: 17:09:15 PLOT SCALE: 1:3.872

PLAN

REV.	DATE	DESCRIPTION	DWN	DSG	CHK	APR
2	2016-01-15	PERMIT LEVEL REPORT	SC	CK	CK	SE
1	2015-11-27	DRAFT - PERMIT LEVEL REPORT	SC	CK	CK	SE
0	2015-08-21	ISSUED AS FINAL	SC	MD	CK	SE
A	2015-07-31	ISSUED FOR REVIEW	SC	MD	CK	SE

ENGINEER'S SEAL

AS A MUTUAL PROTECTION TO OUR CLIENT, THE PUBLIC, AND OURSELVES, ALL REPORTS AND DRAWINGS ARE SUBMITTED FOR THE CONFIDENTIAL INFORMATION OF OUR CLIENT FOR A SPECIFIC PROJECT. AUTHORIZATION FOR ANY USE OR PUBLICATION OF THIS REPORT OR ANY DATA, STATEMENTS, CONCLUSIONS OR ABSTRACTS FROM OR REGARDING OUR REPORTS AND DRAWINGS, THROUGH ANY FORM OF PRINT OR ELECTRONIC MEDIA, INCLUDING WITHOUT LIMITATION, POSTING OR REPRODUCTION OF SAME ON ANY WEBSITE, IS RESERVED PENDING NORWEST'S WRITTEN APPROVAL. IF THIS REPORT IS ISSUED IN AN ELECTRONIC FORMAT, AN ORIGINAL PAPER COPY IS ON FILE AT NORWEST CORPORATION AND THAT COPY IS THE PRIMARY REFERENCE WITH PRECEDENCE OVER ANY ELECTRONIC COPY OF THE DOCUMENT, OR ANY EXTRACTS FROM OUR DOCUMENTS PUBLISHED BY OTHERS.

KGHM AJAX MINING INC.

AJAX PROJECT

TAILINGS AND WATER MANAGEMENT FACILITIES

GENERAL ARRANGEMENT

END OF YEAR 3

SCALE: AS SHOWN

DATE: 2016-01-15

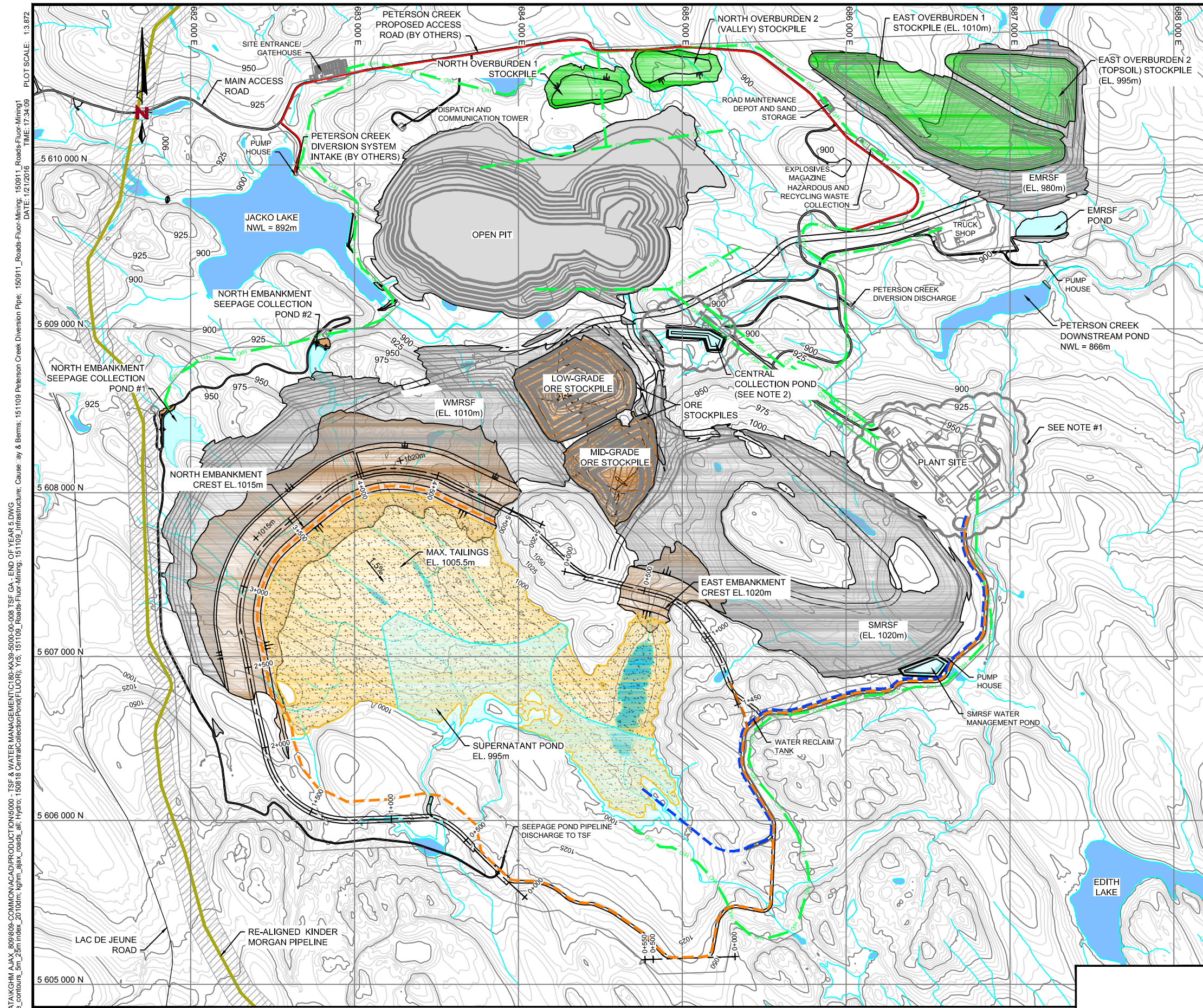
COORD. SYS.: UTM-NAD83 ZONE 10

DRWN BY: SC REV'D BY: CK

DSGN BY: CK APP'D BY: SE

DRAWING NO.: C180-KA39-5000-00-007

REV.: 2

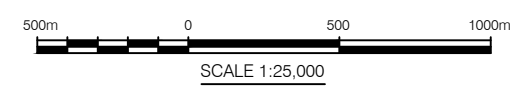


LEGEND:

- TAILINGS (BEACH ABOVE WATER)
- SUPERNATANT/CONTACT WATER POND
- EXISTING WATER BODIES
- COMPACTED MINE ROCK
- MINE ROCK BUTTRISS
- MINE ROCK STORAGE FACILITY
- ORE STOCKPILE
- PERMANENT STOCKPILE
- TEMPORARY STOCKPILE
- RE-ALIGNED KINDER MORGAN PIPELINE (BY KGHM)
- OPEN PIT (NOVEMBER 2015 MINE PLAN)
- PROPOSED HAUL ROADS (BY FLUOR)
- ULTIMATE TAILINGS PIPELINE CORRIDOR (BY FLUOR)
- RECLAIM PIPELINE (BY FLUOR)
- 25KV TRANSMISSION LINE (BY KGHM)
- 0+000 ULTIMATE EMBANKMENT CREST CHAINAGE

- NOTES:**
- PLANT SITE DESIGNED BY FLUOR.
 - CENTRAL COLLECTION POND DESIGNED BY FLUOR (AUG 18, 2015).
 - TAILINGS AND RECLAIM PIPELINE LAYOUTS WERE ESTIMATED BY NORWEST. THESE PIPELINE ALIGNMENTS WILL BE FINALIZED BY FLUOR.
 - TAILINGS BEACHES ARE SLOPED AT APPROXIMATELY 1.5:1.

- REFERENCES:**
- GENERAL SITE INFRASTRUCTURE AND ACCESS ROADS BASED ON LAYOUTS PROVIDED BY KGHM ON NOVEMBER 6, 2015 (KGHM-GC-008835).
 - ALL DESIGN DATA COORDINATES PROVIDED ARE IN METRES.
 - TOPOGRAPHY DATA BASED ON LIDAR PROVIDED BY KGHM (APRIL 2013).
 - KINDER MORGAN PIPELINE ALIGNMENTS PROVIDED BY KGHM ON NOVEMBER 4, 2014.
 - TAILINGS WHERE SHOWN ON THE STAGED DRAWING IS BASED ON THE FEED TONNAGE SCHEDULE FOR THE AJAX MINE PROVIDED BY KGHM ON OCTOBER 5, 2015.
 - OPEN PIT AND MRSF LAYOUTS PRESENTED IN THE DRAWING ARE BASED ON THE AJAX MINE SCHEDULE PROVIDED BY KGHM ON NOVEMBER 6, 2015.



SCALES INDICATED BASED ON AN 11"x17" PLOT CONFIGURATION

FILENAME: I:\PROJECTS\AJAX_MINE\COMMON\ACAD\PRODUCTION\000_TSF & WATER MANAGEMENT\180-KA39-5000-00-008_TSF_GA_END_OF_YEAR_5.DWG
 XREF FILE(S): Topo_Large_contours_5m_25m_index_2010.dwg; kgm_ajax_roads_all; Hydro: 150818 CentralCollectionPond(FLUOR); Yrs: 151109_Roads-Fluor-Mining; 151109_Infrastructure; Cause: ay & Berms; 151109 Peterson Creek Diversion Pipe; 150911_Roads-Fluor-Mining; 150911_Roads-Fluor-Mining
 DATE: 1/21/2016 TIME: 17:34:09 PLOT SCALE: 1:3.872

PLAN

REV.	DATE	DESCRIPTION	DWN	DSG	CHK	APR
3	2016-01-15	PERMIT LEVEL REPORT	SC	CK	CK	SE
1	2015-11-27	DRAFT - PERMIT LEVEL REPORT	SC	CK	CK	SE
0	2015-08-21	ISSUED AS FINAL	SC	MD	CK	SE
A	2015-07-31	ISSUED FOR REVIEW	SC	MD	CK	SE

ENGINEER'S SEAL

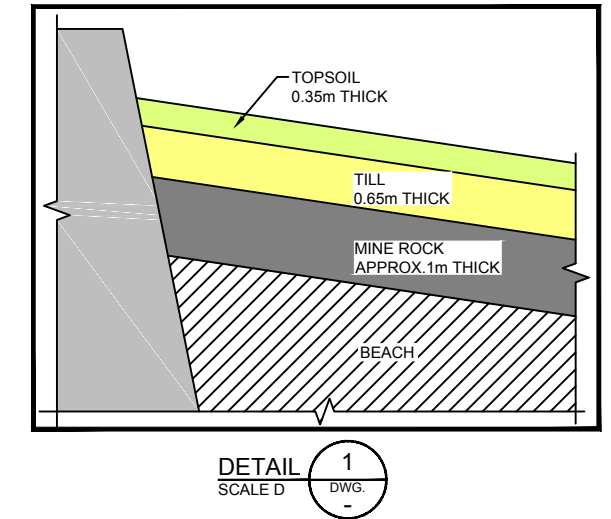
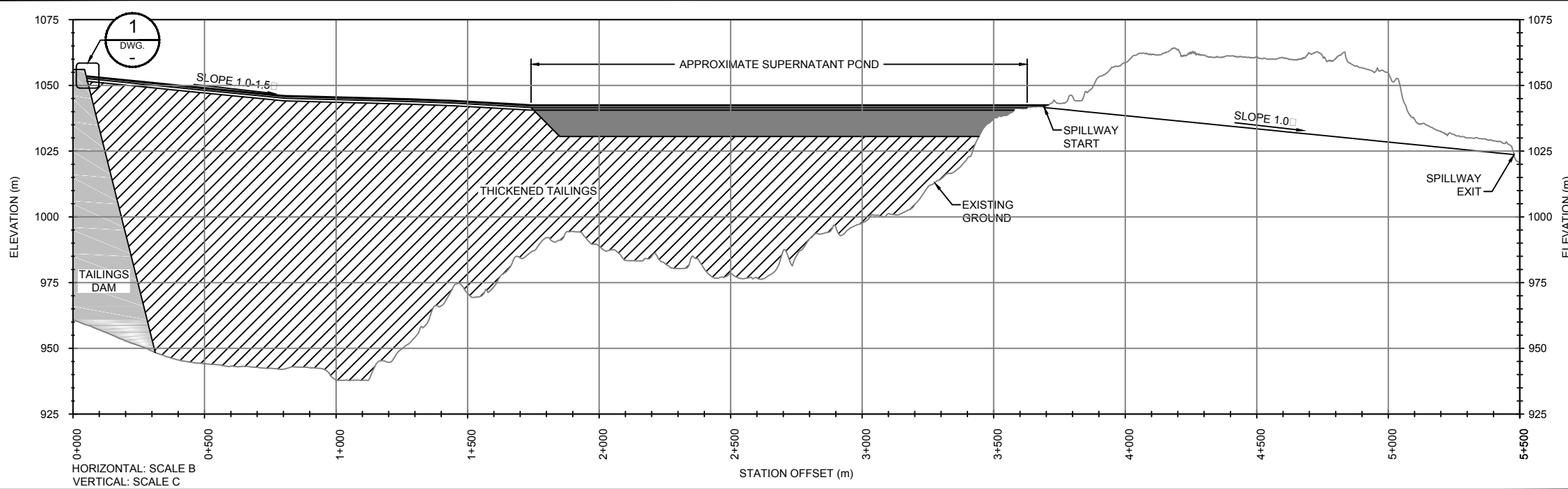
AS A MUTUAL PROTECTION TO OUR CLIENT, THE PUBLIC, AND OURSELVES, ALL REPORTS AND DRAWINGS ARE SUBMITTED FOR THE CONFIDENTIAL INFORMATION OF OUR CLIENT FOR A SPECIFIC PROJECT. AUTHORIZATION FOR ANY USE OR PUBLICATION OF THIS REPORT OR ANY DATA, STATEMENTS, CONCLUSIONS OR ABSTRACTS FROM OR BEYONDING OUR REPORTS AND DRAWINGS, THROUGH ANY FORM OF PRINT OR ELECTRONIC MEDIA, INCLUDING WITHOUT LIMITATION, POSTING OR REPRODUCTION OF SAME ON ANY WEBSITE, IS RESERVED PENDING NORWEST'S WRITTEN APPROVAL. IF THIS REPORT IS ISSUED IN AN ELECTRONIC FORMAT, AN ORIGINAL PAPER COPY IS ON FILE AT NORWEST CORPORATION AND THAT COPY IS THE PRIMARY REFERENCE WITH PRECEDENCE OVER ANY ELECTRONIC COPY OF THE DOCUMENT, OR ANY EXTRACTS FROM OUR DOCUMENTS PUBLISHED BY OTHERS.

SCALE: AS SHOWN
 DATE: 2016-01-15
 CO-ORD. SYS.: UTM-NAD83 ZONE 10
 DRWN BY: SC REV'D BY: CK
 DSGN BY: CK APP'D BY: SE

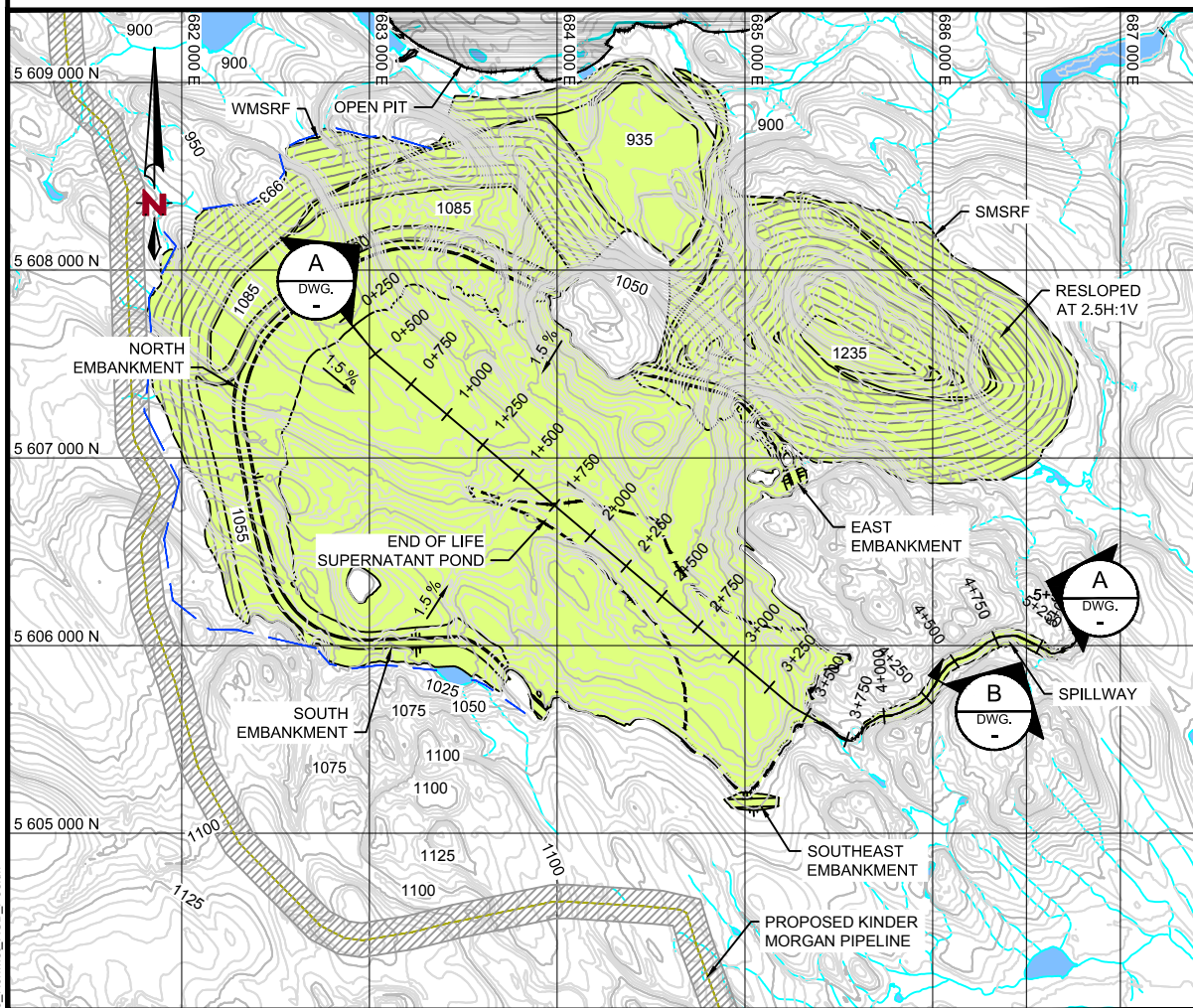
KGHM **KGHM AJAX MINING INC.**

AJAX PROJECT
 TAILINGS AND WATER MANAGEMENT FACILITIES
 GENERAL ARRANGEMENT
 END OF YEAR 5

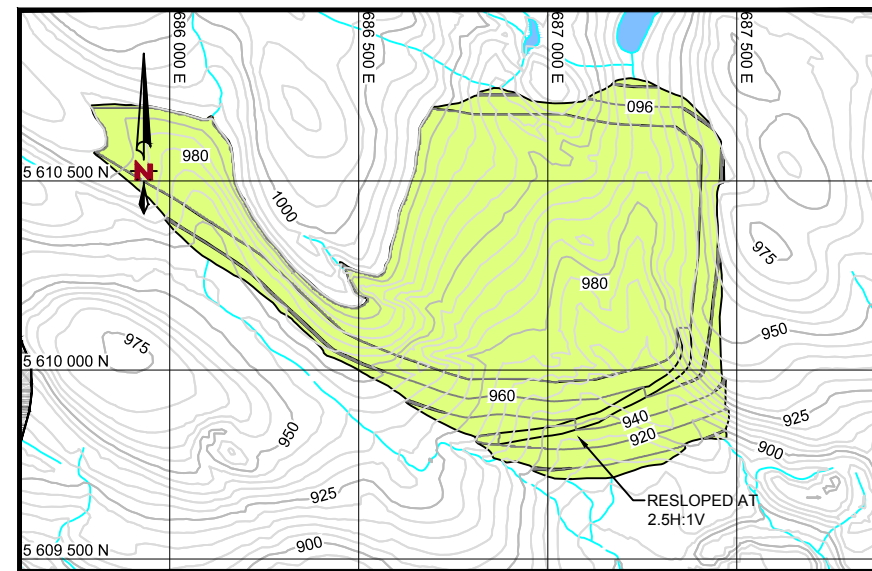
NORWEST DRAWING NO.: C180-KA39-5000-00-008 REV.: 2



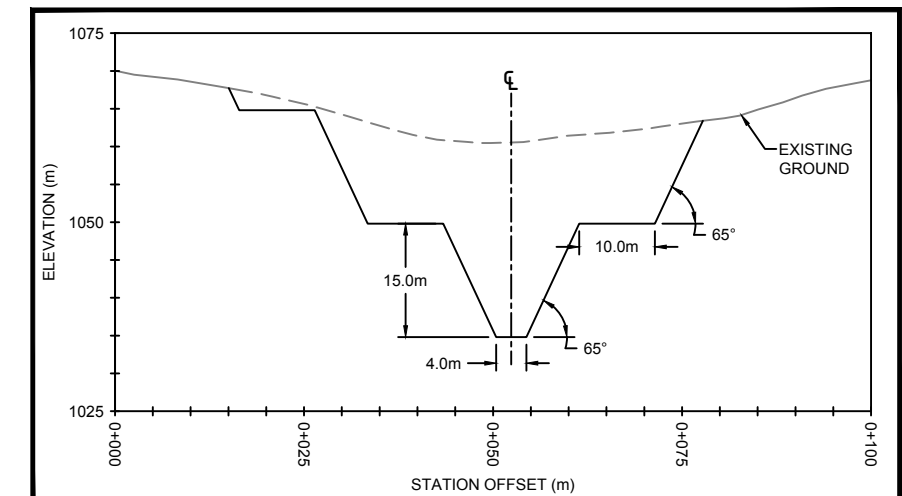
SECTION A
DWG. -



TSF, WMSRF, SMRSF AND SPILLWAY PLAN
SCALE A



EMRSF PLAN
SCALE B



SECTION B
SCALE D
DWG. -

REFERENCES:

1. ALL DESIGN COORDINATES ARE PROVIDED IN METRES.
2. THE COORDINATE SYSTEM IS IN UTM NAD 83 ZONE 10.
3. TOPOGRAPHY DATA IS BASED ON LIDAR PROVIDED BY KGHM (APRIL 2013).
4. OPEN PIT LAYOUT PROVIDED BY KGHM (NOVEMBER 2015 MINE PLAN).

NOTES:

1. OVERBURDEN CUT NEEDS TO BE AT 3:1 WITH A BENCH WIDTH OF 4m AT THE BEDROCK CONTACT.
2. DEPTH OF OVERBURDEN TO BE DETERMINED DURING DETAILED SITE INVESTIGATIONS.

LEGEND

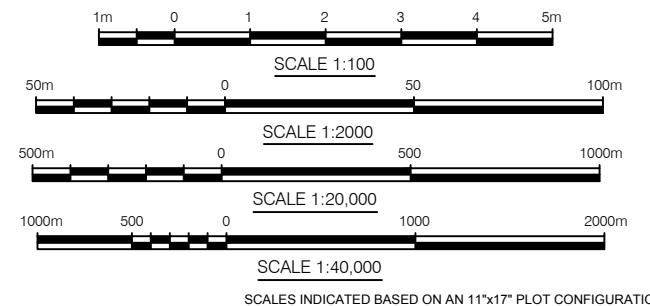
- TOPSOIL / REVEGETATION
- TILL
- MINE ROCK
- TAILINGS
- SUPERNATANT POND
- COLLECTOR DITCH

SCALE D

SCALE C

SCALE B

SCALE A



REV.	DATE	DESCRIPTION	DWN	DSG	CHK	APR
3	2016-01-15	PERMIT LEVEL REPORT	SC	DT	SE	SE
2	2015-12-01	ISSUED FOR REVIEW	SC	MW	CK	SE
1	2015-11-27	DRAFT - PERMIT LEVEL REPORT	SC	CK	CK	SE
0	2015-08-21	ISSUED AS FINAL	SC	MD	CK	SE
A	2015-07-31	ISSUED FOR REVIEW	SC	MD	CK	SE

ENGINEER'S SEAL

AS A MUTUAL PROTECTION TO OUR CLIENT, THE PUBLIC, AND OURSELVES, ALL REPORTS AND DRAWINGS ARE SUBMITTED FOR THE CONFIDENTIAL INFORMATION OF OUR CLIENT FOR A SPECIFIC PROJECT. AUTHORIZATION FOR ANY USE AND/OR PUBLICATION OF THIS REPORT OR ANY DATA, STATEMENTS, CONCLUSIONS OR ABSTRACTS FROM OR REGARDING OUR REPORTS AND DRAWINGS, THROUGH ANY FORM OF PRINT OR ELECTRONIC MEDIA, INCLUDING WITHOUT LIMITATION, POSTING OR REPRODUCTION OF SAME ON ANY WEBSITE, IS RESERVED PENDING NORWEST'S WRITTEN APPROVAL. IF THIS REPORT IS ISSUED IN AN ELECTRONIC FORMAT, AN ORIGINAL PAPER COPY IS ON FILE AT NORWEST CORPORATION AND THAT COPY IS THE PRIMARY REFERENCE WITH PRECEDENCE OVER ANY ELECTRONIC COPY OF THE DOCUMENT, OR ANY EXTRACTS FROM OUR DOCUMENTS PUBLISHED BY OTHERS.

SCALE: AS SHOWN
DATE: 2016-01-15
CO-ORD. SYS.: UTM-NAD83 ZONE 10
DRWN BY: SC REVD BY: CK
DSGN BY: CK APP'D BY: SE

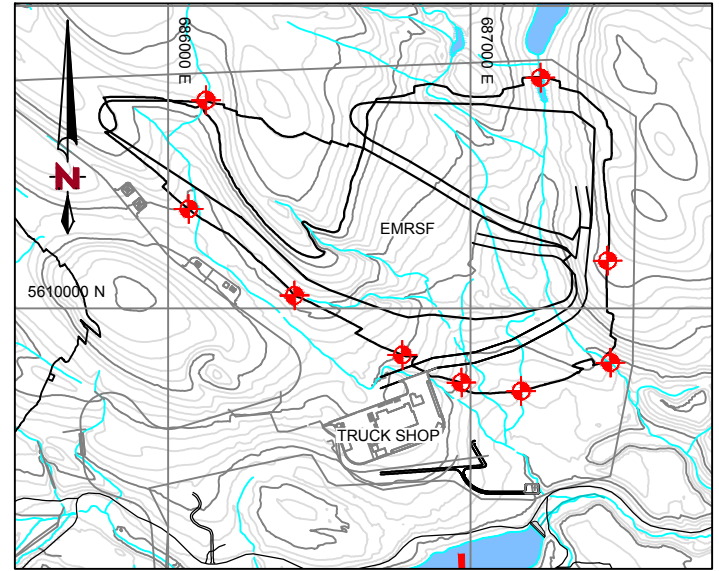
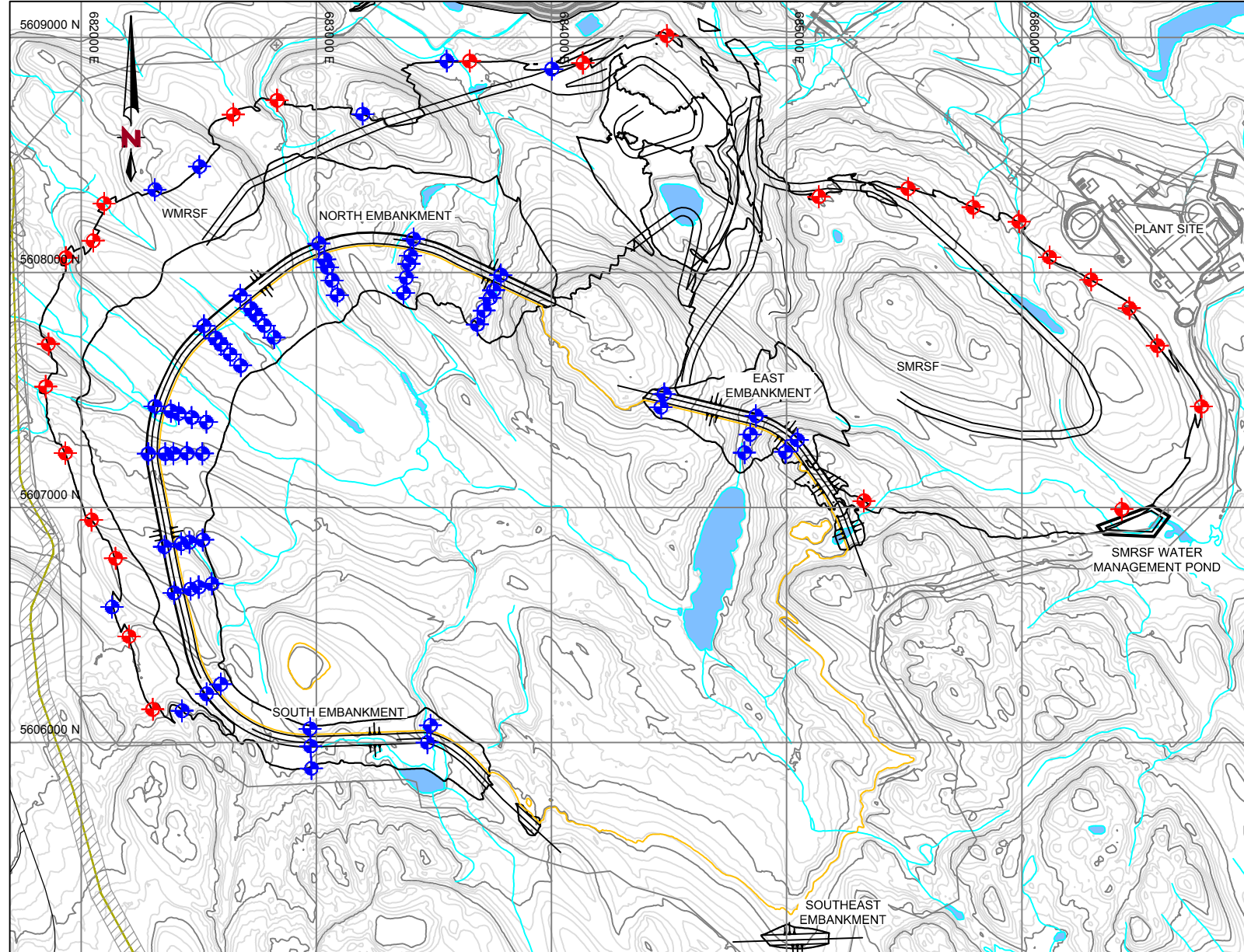
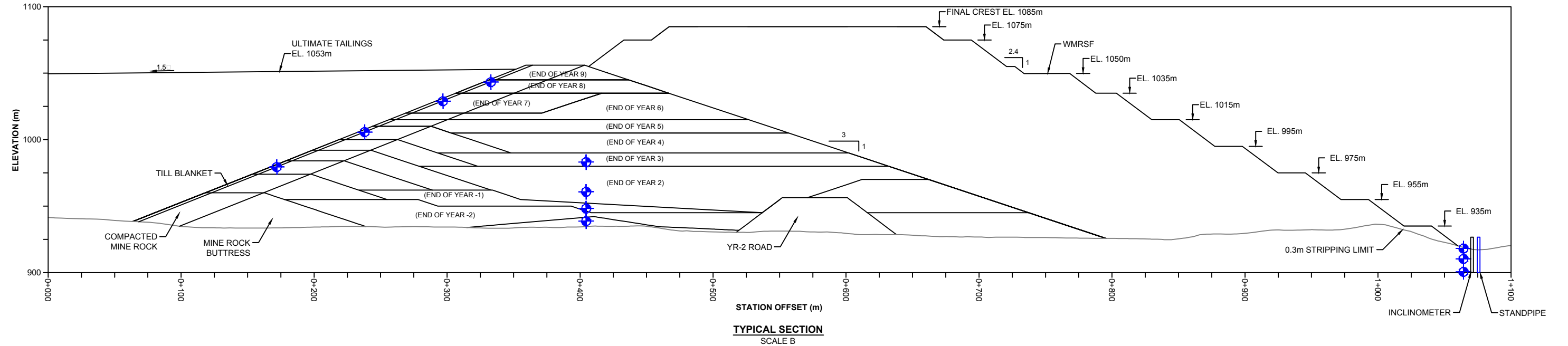
KGHM **KGHM AJAX MINING INC.**

AJAX PROJECT
TAILINGS AND WATER MANAGEMENT FACILITIES
GENERAL ARRANGEMENT
CLOSURE PLAN AND SECTIONS

DRAWING NO.: C180-KA39-5000-00-014
REV: 3

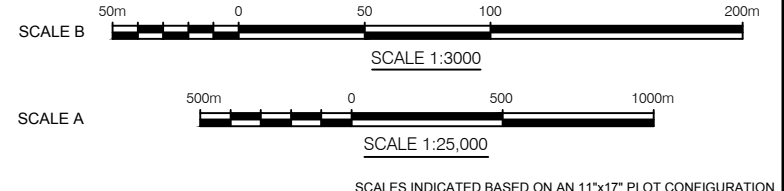
NORWEST

FILENAME: I:\PROJECTS\AJAX\COMMON\ACAD\PRODUCTION\000_TSF & WATER MANAGEMENT\180-KA39-5000-70-001_EMBANKMENT INSTRUMENTATION.DWG
 XREF FILE(S): HYDRO-C180-KA39-5100-10-101_NORTH AND WMRSF DEVELOPMENT SECTION_151103_Infrastructure_151103_topo_contours_5m_25m_index_2010.dwg; kghm_slack_roads_all_150911_Roads-Fluor-Mining_150911_Roads-Fluor-Mining_1 DATE: 1/21/2016 TIME: 17:30:58 PLOT SCALE: 1:3.872



- LEGEND:**
- EXISTING WATER BODIES
 - RE-ALIGNED KINDER MORGAN PIPELINE (BY KGHM)
 - OPEN PIT (NOVEMBER 2015 MINE PLAN)
 - INSTRUMENT INCLUDING BOTH VIBRATING WIRE PIEZOMETER AND INCLINOMETER
 - VIBRATING WIRE PIEZOMETER OR MONITORING WELL

- REFERENCES:**
1. GENERAL SITE INFRASTRUCTURE AND ACCESS ROADS BASED ON LAYOUTS PROVIDED BY KGHM ON NOVEMBER 6, 2015 (KGHM-GC-008835).
 2. ALL DESIGN DATA COORDINATES PROVIDED ARE IN METRES.
 3. TOPOGRAPHY DATA BASED ON LIDAR PROVIDED BY KGHM (APRIL 2013).
 4. KINDER MORGAN PIPELINE ALIGNMENTS PROVIDED BY KGHM ON NOVEMBER 4, 2014.
 5. OPEN PIT AND MRSF LAYOUTS PRESENTED IN THE DRAWING ARE BASED ON THE AJAX MINE SCHEDULE PROVIDED BY KGHM ON NOVEMBER 6, 2015.



TSF, WMRSF AND SMRSF PLAN
SCALE A

2	2016-01-15	PERMIT LEVEL DESIGN REPORT	SC	KC	CK	SE
REV.	DATE	DESCRIPTION	DWN	DSG	CHK	APR

ENGINEER'S SEAL

AS A MUTUAL PROTECTION TO OUR CLIENT, THE PUBLIC, AND OURSELVES, ALL REPORTS AND DRAWINGS ARE SUBMITTED FOR THE CONFIDENTIAL INFORMATION OF OUR CLIENT FOR A SPECIFIC PROJECT. AUTHORIZATION FOR ANY USE AND/OR PUBLICATION OF THIS REPORT OR ANY DATA, STATEMENTS, CONCLUSIONS OR ABSTRACTS FROM OR BEYOND OUR REPORTS AND DRAWINGS, THROUGH ANY FORM OF PRINT OR ELECTRONIC MEDIA, INCLUDING WITHOUT LIMITATION, POSTING OR REPRODUCTION OF SAME ON ANY WEBSITE, IS RESERVED PENDING NORWEST'S WRITTEN APPROVAL. IF THIS REPORT IS ISSUED IN AN ELECTRONIC FORMAT, AN ORIGINAL PAPER COPY IS ON FILE AT NORWEST CORPORATION AND THAT COPY IS THE PRIMARY REFERENCE WITH PRECEDENCE OVER ANY ELECTRONIC COPY OF THE DOCUMENT, OR ANY EXTRACTS FROM OUR DOCUMENTS PUBLISHED BY OTHERS.

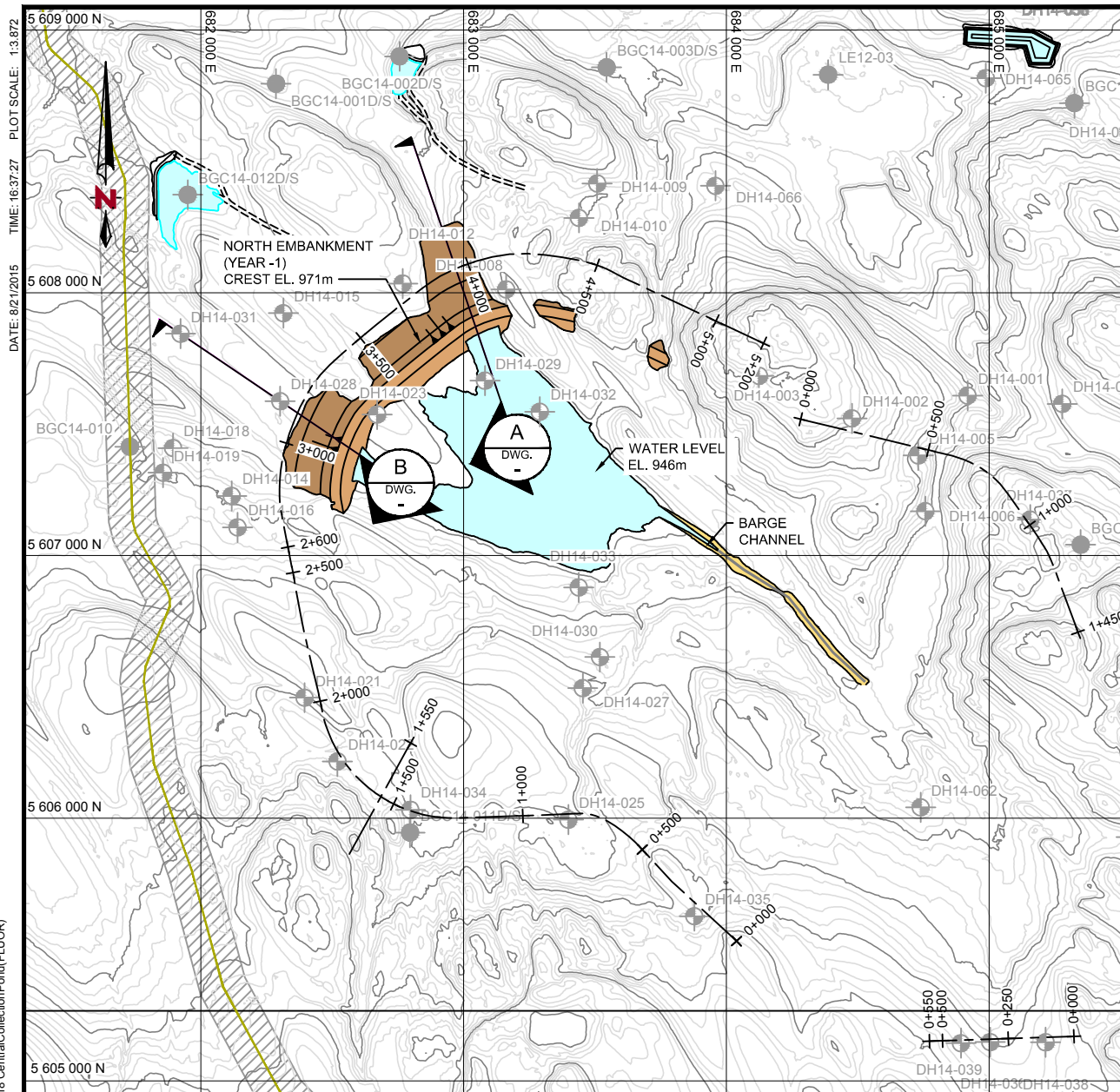
SCALE: AS SHOWN
 DATE: 2016-01-15
 CO-ORD. SYS.: UTM-NAD83 ZONE 10
 DRWN BY: SC REV'D BY: CK
 DSGN BY: KC APP'D BY: SE

KGHM **KGHM AJAX MINING INC.**

AJAX PROJECT
 TAILINGS AND WATER MANAGEMENT FACILITIES
 INSTRUMENTATION SECTION
 TSF AND MRSF

NORWEST DRAWING NO.: C180-KA39-5000-70-001 REV.: 2

FILENAME: I:\PROJECT\KGMH\AJAX_800809_6_CNV\T\DESIGN\SCHEMATIC\PRODUCTION\4 PRELIMINARY TAILINGS STORAGE FACILITY DESIGN REPORT\15 C180-KA39-5100-00-006 STARTER - SECTIONS.DWG
 XREF FILE(S): Topo_Large contours_5m_25m index_2010m; Existing DH and TP; Phasing_Year_-1; 150731_CHAINAGE; 150818 CentralCollectionPonds(FLOOR)
 IMAGE FILE(S): KGHM_Logo_NonMet_RGB_Pos.tif



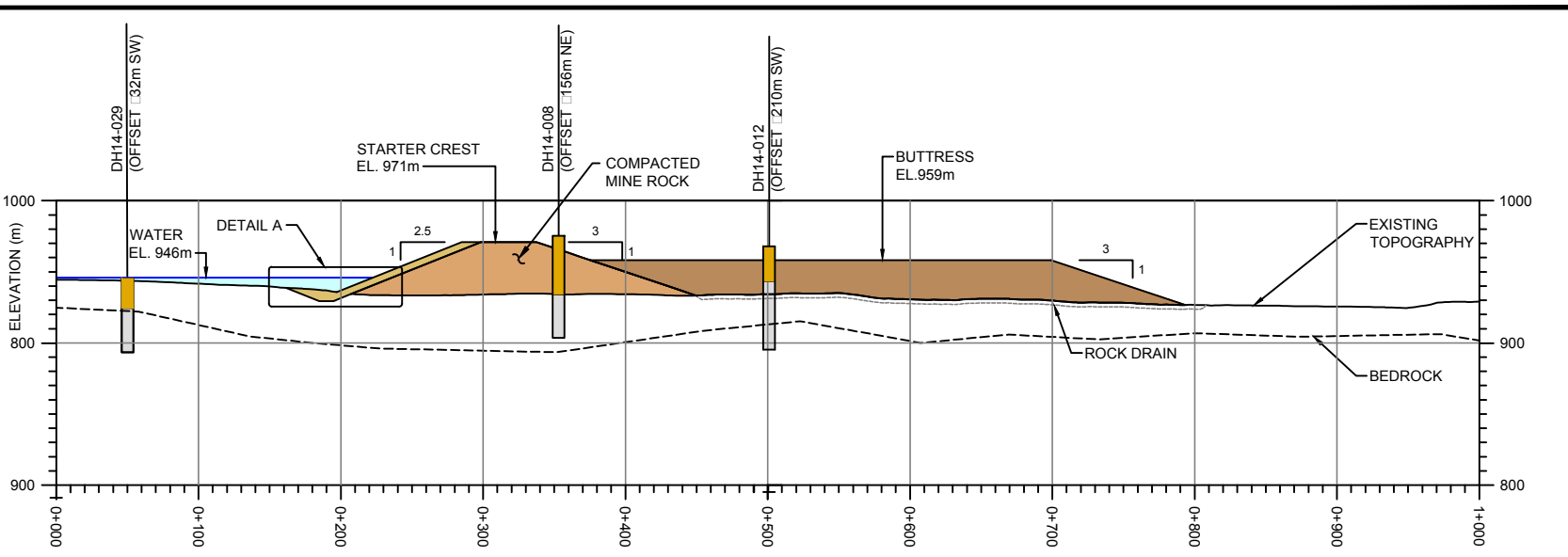
PLAN
SCALE A

LEGEND:

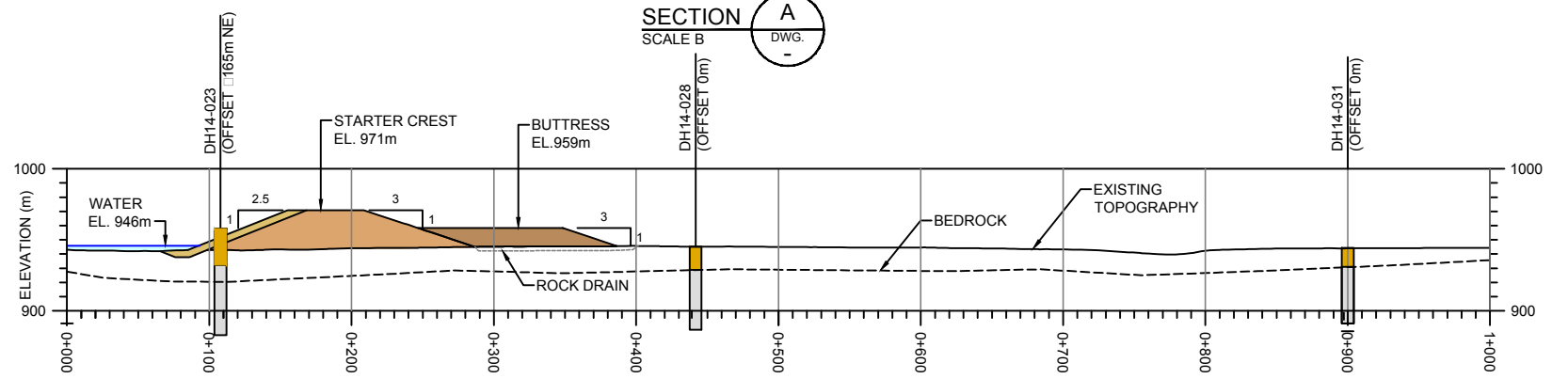
- BEDROCK
- UNCONSOLIDATED OVERBURDEN
- TILL BLANKET
- COMPACTED MINE ROCK
- MINE ROCK BUTTRESS
- SUPERNATANT POND
- + 0+000 CHAINAGE
- RE-ALIGNED KINDER MORGAN PIPELINE (BY KGHM)

REFERENCES:

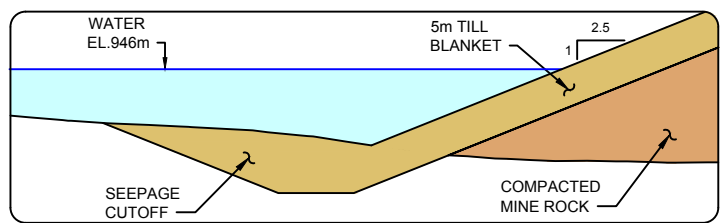
1. TAILINGS STORAGE FACILITY DESIGN AND GENERAL SITE INFRASTRUCTURE BASED ON LAYOUTS PROVIDED BY KGHM ON OCTOBER 30, 2014.
2. ALL DESIGN DATA COORDINATES PROVIDED ARE IN METRES.
3. TOPOGRAPHY DATA BASED ON LIDAR PROVIDED BY KGHM (APRIL 2013).
4. KINDER MORGAN PIPELINE ALIGNMENTS PROVIDED BY KGHM ON NOVEMBER 4, 2014.
5. OPEN PIT OUTLINE BASED ON NOVEMBER 2014 MINE PLAN PROVIDED BY KGHM ON FEBRUARY 20, 2015.



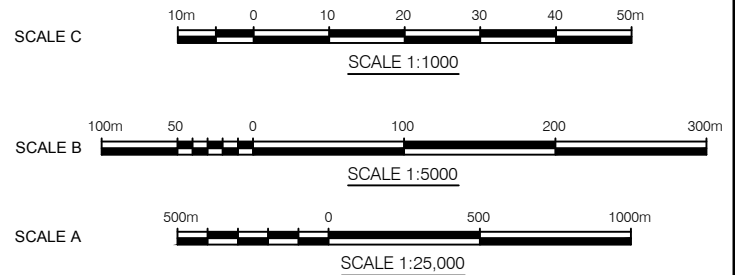
SECTION A
SCALE B
DWG. -



SECTION B
SCALE B
DWG. -



DETAIL A
SCALE C
DWG. -



AS A MUTUAL PROTECTION TO OUR CLIENT, THE PUBLIC, AND OURSELVES, ALL REPORTS AND DRAWINGS ARE SUBMITTED FOR THE CONFIDENTIAL INFORMATION OF OUR CLIENT FOR A SPECIFIC PROJECT. AUTHORIZATION FOR ANY USE AND/OR PUBLICATION OF THIS REPORT OR ANY DATA, STATEMENTS, CONCLUSIONS OR ABSTRACTS FROM OR REGARDING OUR REPORTS AND DRAWINGS, THROUGH ANY FORM OF PRINT OR ELECTRONIC MEDIA, INCLUDING WITHOUT LIMITATION, POSTING OR REPRODUCTION OF SAME ON ANY WEBSITE, IS RESERVED PENDING NORWEST'S WRITTEN APPROVAL. IF THIS REPORT IS ISSUED IN AN ELECTRONIC FORMAT, AN ORIGINAL PAPER COPY IS ON FILE AT NORWEST CORPORATION AND THAT COPY IS THE PRIMARY REFERENCE WITH PRECEDENCE OVER ANY ELECTRONIC COPY OF THE DOCUMENT, OR ANY EXTRACTS FROM OUR DOCUMENTS PUBLISHED BY OTHERS.

SCALE:	AS SHOWN
DATE:	2015-08-21
CO-ORD. SYS.:	UTM NAD 83 ZONE 10
DRWN BY:	VG [REV'D BY: CK]
DSGN BY:	MD [APP'D BY: SE]

KGHM KGHM AJAX MINING INC.

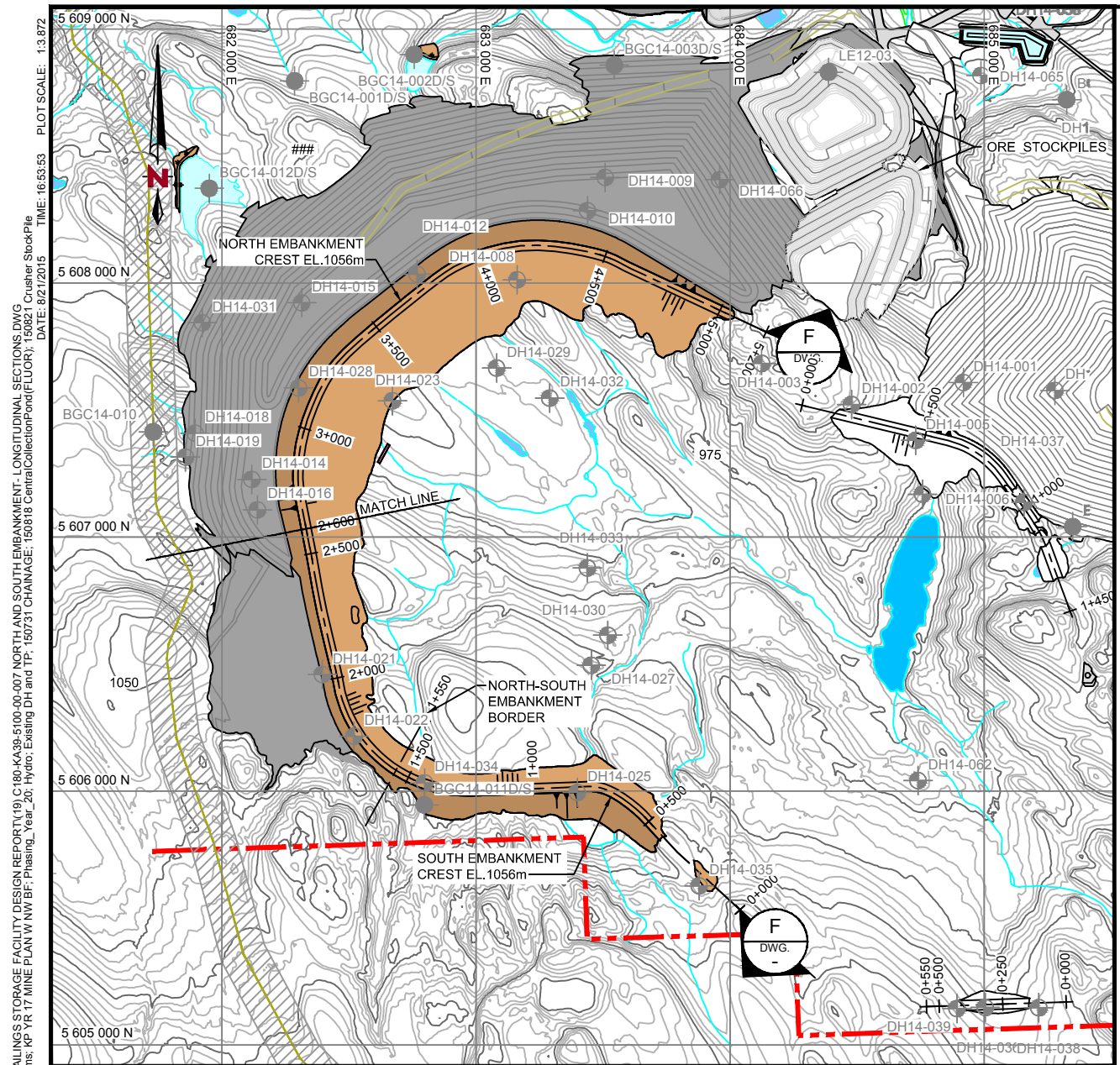
AJAX PROJECT
TAILINGS STORAGE FACILITY
NORTH EMBANKMENT - STARTER
SECTIONS

DRAWING NO.: C180-KA39-5100-00-006

NORWEST

REV.: 0

REV.	DATE	DESCRIPTION	DWN	DSG	CHK	APR
0	2015-08-21	ISSUED AS FINAL	VG	MD	CK	SE
A	2015-07-31	ISSUED FOR REVIEW	VG	MD	CK	SE



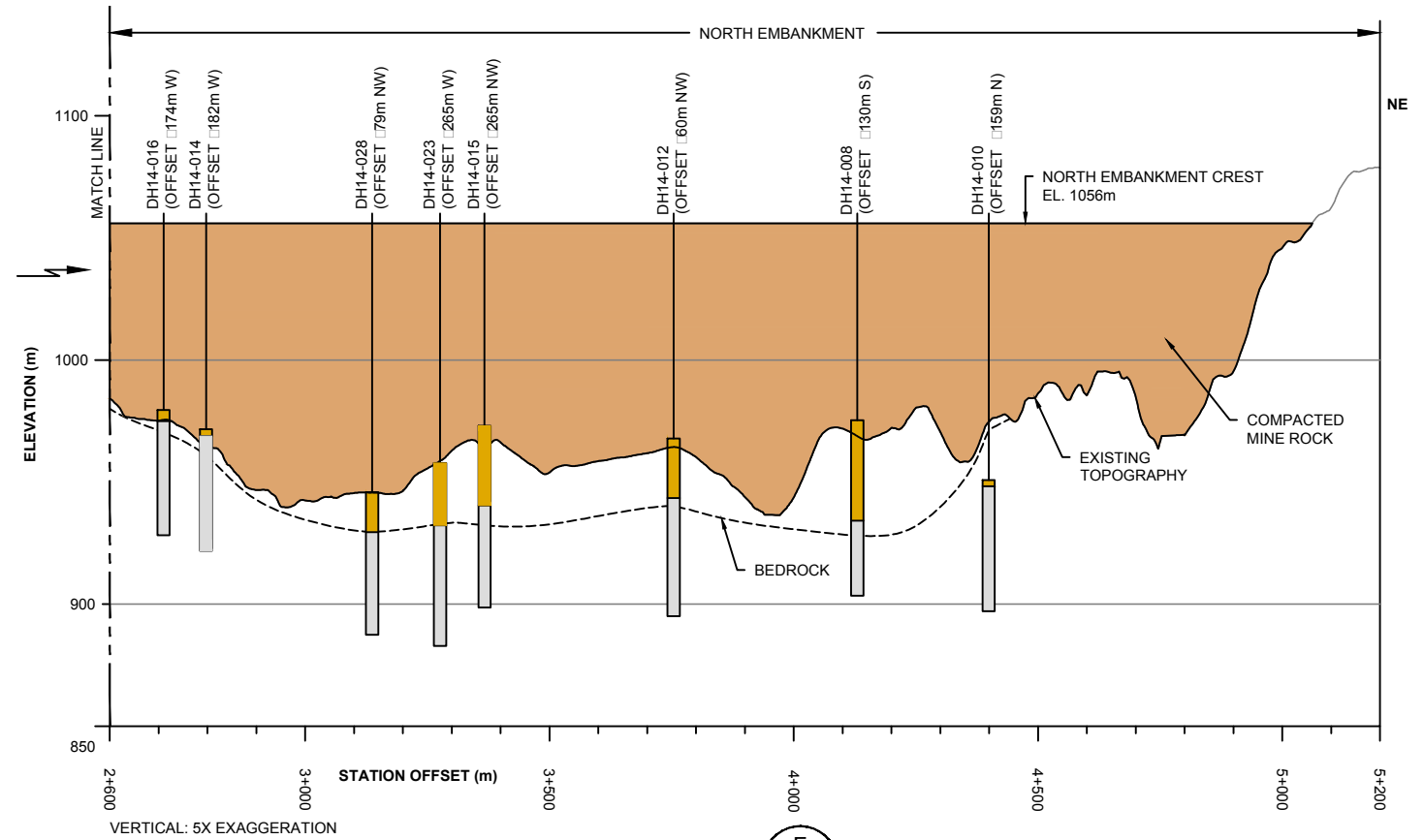
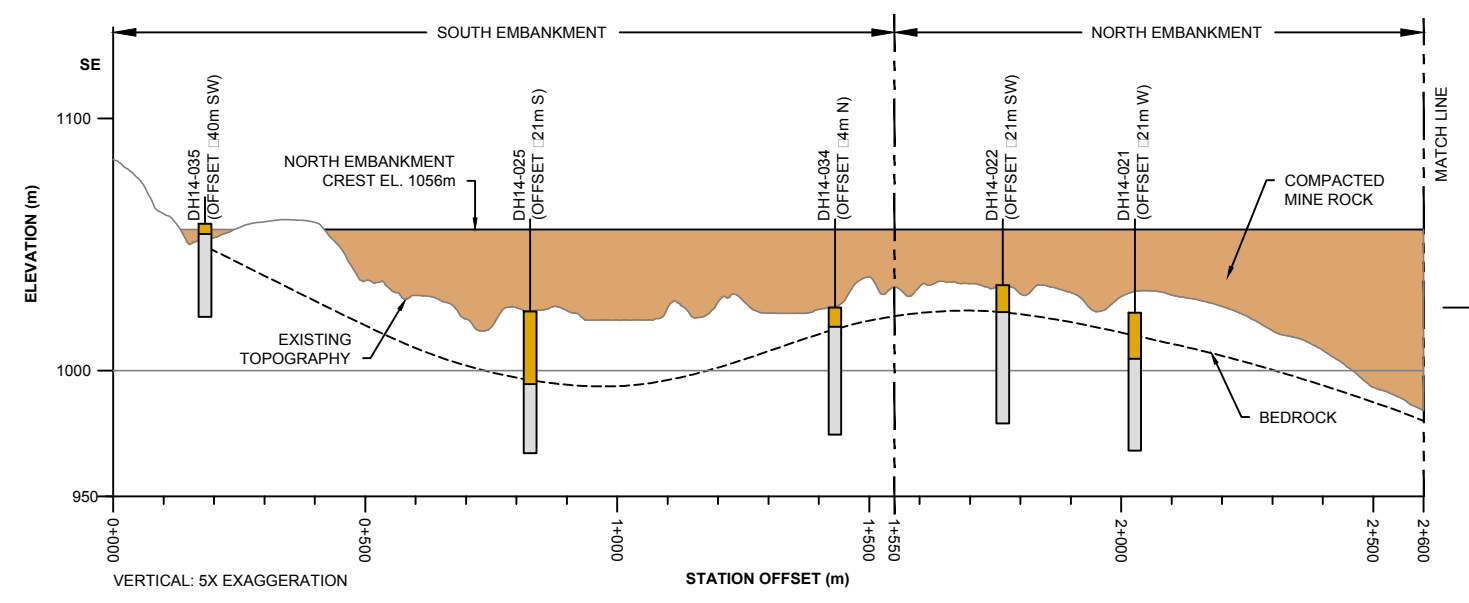
PLAN
SCALE A

LEGEND:

- BEDROCK
- UNCONSOLIDATED OVERBURDEN
- COMPACTED MINE ROCK
- MINE ROCK BUTTRESS
- MINE ROCK STORAGE FACILITY (BY KGHM)
- + 0+000 CHAINAGE
- RE-ALIGNED KINDER MORGAN PIPELINE (BY KGHM)

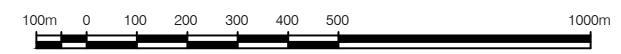
REFERENCES:

1. TAILINGS STORAGE FACILITY DESIGN AND GENERAL SITE INFRASTRUCTURE BASED ON LAYOUTS PROVIDED BY KGHM ON OCTOBER 30, 2014.
2. ALL DESIGN DATA COORDINATES PROVIDED ARE IN METRES.
3. TOPOGRAPHY DATA BASED ON LIDAR PROVIDED BY KGHM (APRIL 2013).
4. KINDER MORGAN PIPELINE ALIGNMENTS PROVIDED BY KGHM ON NOVEMBER 4, 2014.
5. OPEN PIT OUTLINE BASED ON NOVEMBER 2014 MINE PLAN PROVIDED BY KGHM ON FEBRUARY 20, 2015.



SECTION F
SCALE B

SCALE B



SCALE A



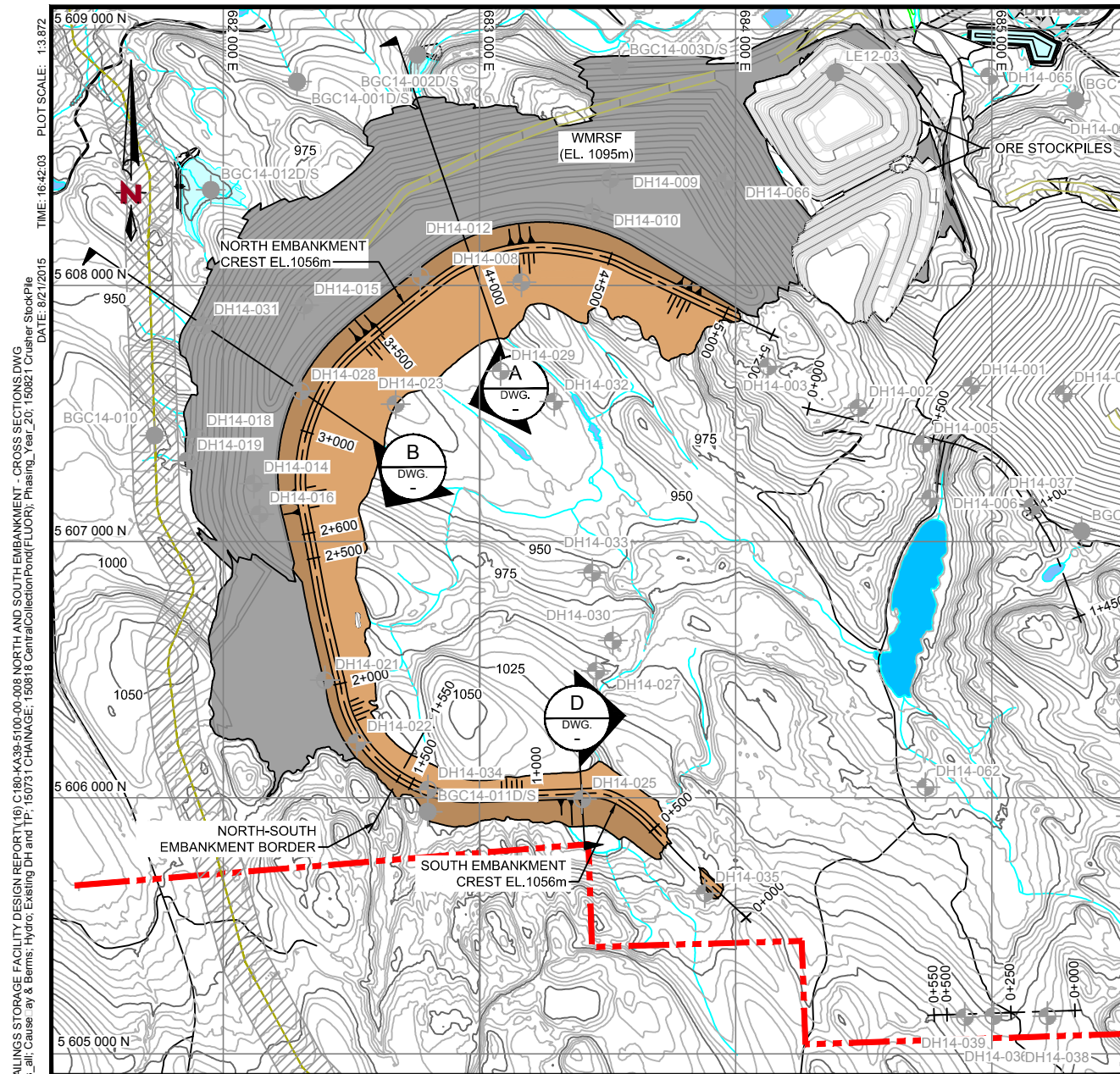
AS A MUTUAL PROTECTION TO OUR CLIENT, THE PUBLIC, AND OURSELVES, ALL REPORTS AND DRAWINGS ARE SUBMITTED FOR THE CONFIDENTIAL INFORMATION OF OUR CLIENT FOR A SPECIFIC PROJECT. AUTHORIZATION FOR ANY USE AND/OR PUBLICATION OF THIS REPORT OR ANY DATA, STATEMENTS, CONCLUSIONS OR ABSTRACTS FROM OR REGARDING OUR REPORTS AND DRAWINGS, THROUGH ANY FORM OF PRINT OR ELECTRONIC MEDIA, INCLUDING WITHOUT LIMITATION POSTING OR REPRODUCTION OF SAME ON ANY WEBSITE, IS RESERVED PENDING NORWEST'S WRITTEN APPROVAL. IF THIS REPORT IS ISSUED IN AN ELECTRONIC FORMAT, AN ORIGINAL PAPER COPY IS ON FILE AT NORWEST CORPORATION AND THAT COPY IS THE PRIMARY REFERENCE WITH PRECEDENCE OVER ANY ELECTRONIC COPY OF THE DOCUMENT, OR ANY EXTRACTS FROM OUR DOCUMENTS PUBLISHED BY OTHERS.

SCALE:	AS SHOWN
DATE:	2015-08-21
COORD. SYS.:	UTM NAD 83 ZONE 10
DRWN BY:	VG / REV'D BY: CK
DSGN BY:	MD / APP'D BY: SE

	KGHM AJAX MINING INC.	
	AJAX PROJECT TAILINGS STORAGE FACILITY NORTH AND SOUTH EMBANKMENT LONGITUDINAL SECTION	
	DRAWING NO.: C180-KA39-5100-00-07	REV.: 0

FILENAME: I:\PROJECT\DATA\KGHM AJAX_8001809_6_CNV_T\DESIGN\SCHEMATIC\PRODUCTION\4 PRELIMINARY TAILINGS STORAGE FACILITY DESIGN REPORT\19) C180-KA39-5100-00-007 NORTH AND SOUTH EMBANKMENT LONGITUDINAL SECTIONS.DWG
 XREF FILE(S): Topo, Large contours, 5m, 25m index, 2010dm, Plt & Stockpiles, Cause, by & Barmis, KP YR 17 MINE PLAN W NW BF, Phasing, Year_20, Hydro, Existing Dri and TP, 150731 CHAINAGE, 150818 CentralCollectionPond(FLOOR), 150821 Crusher Stockpile
 IMAGE FILE(S): KGHM_Logo_NonMet_RGB_Pos.tif
 TIME: 16:53:53 PLOT SCALE: 1:3.872
 DATE: 8/21/2015

0	2015-08-21	ISSUED AS FINAL	VG	MD	CK	SE
A	2015-07-31	ISSUED FOR REVIEW	VG	MD	CK	SE
REV.	DATE	DESCRIPTION	DWN	DSG	CHK	APR



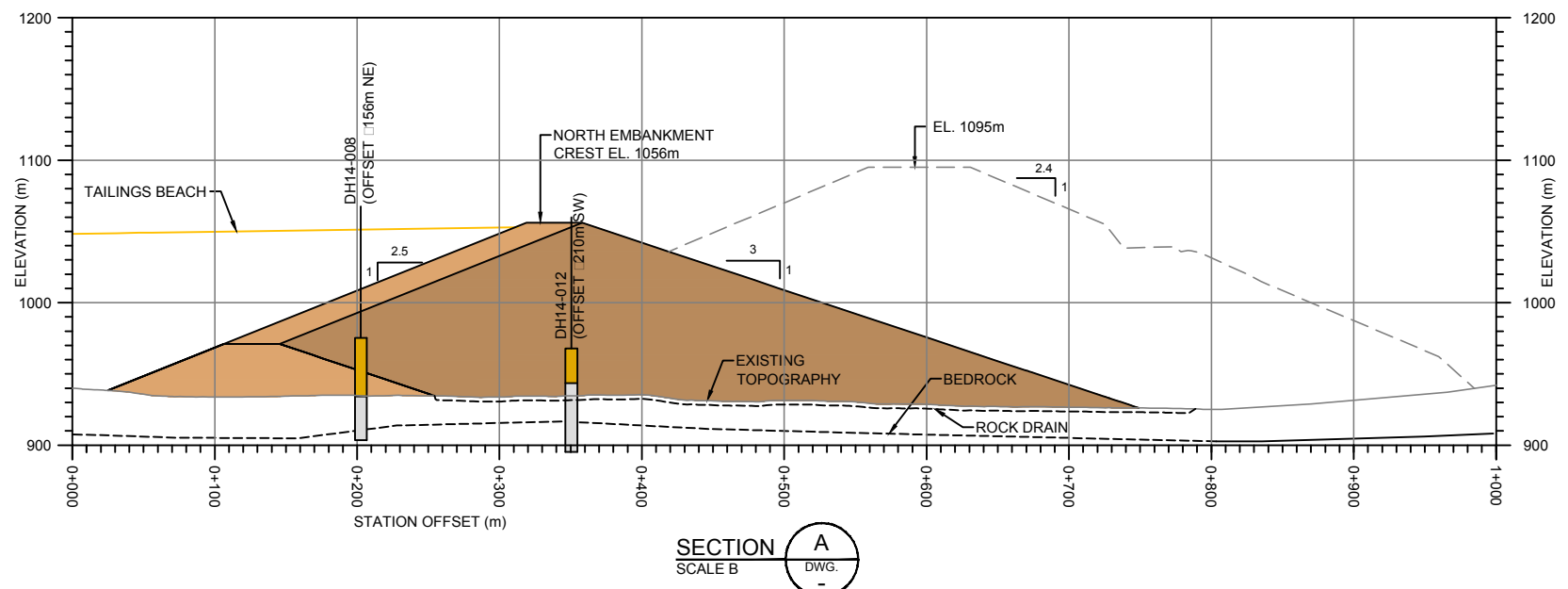
PLAN
SCALE A

LEGEND:

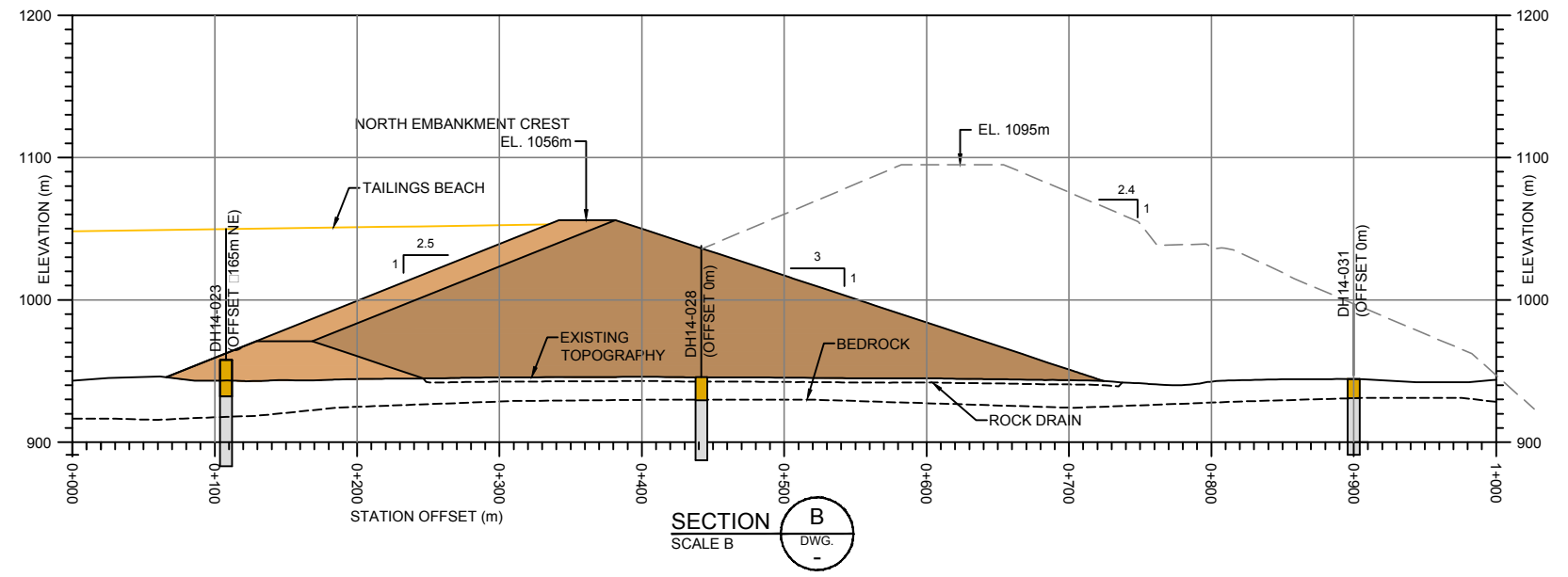
- BEDROCK
- UNCONSOLIDATED OVERBURDEN
- COMPACTED MINE ROCK
- MINE ROCK BUTTRESS
- MINE ROCK STORAGE FACILITY (BY KGHM)
- CHAINAGE
- RE-ALIGNED KINDER MORGAN PIPELINE (BY KGHM)

REFERENCES:

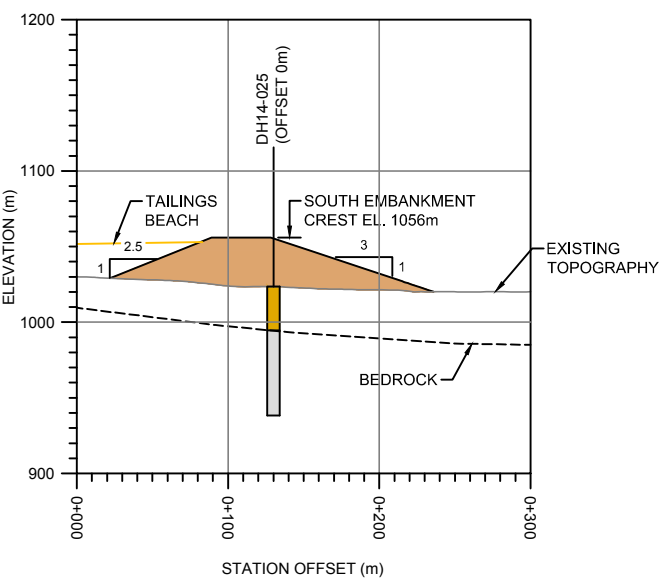
1. TAILINGS STORAGE FACILITY DESIGN AND GENERAL SITE INFRASTRUCTURE BASED ON LAYOUTS PROVIDED BY KGHM ON OCTOBER 30, 2014.
2. ALL DESIGN DATA COORDINATES PROVIDED ARE IN METRES.
3. TOPOGRAPHY DATA BASED ON LIDAR PROVIDED BY KGHM (APRIL 2013).
4. KINDER MORGAN PIPELINE ALIGNMENTS PROVIDED BY KGHM ON NOVEMBER 4, 2014.
5. OPEN PIT OUTLINE BASED ON NOVEMBER 2014 MINE PLAN PROVIDED BY KGHM ON FEBRUARY 20, 2015.



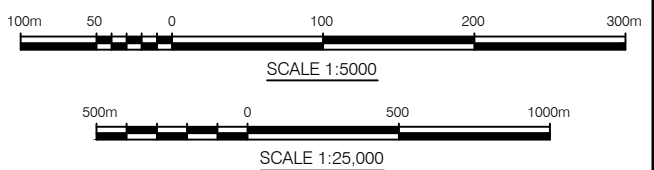
SECTION A
SCALE B
DWG.



SECTION B
SCALE B
DWG.



SECTION D
SCALE B
DWG.



AS A MUTUAL PROTECTION TO OUR CLIENT, THE PUBLIC, AND OURSELVES, ALL REPORTS AND DRAWINGS ARE SUBMITTED FOR THE CONFIDENTIAL INFORMATION OF OUR CLIENT FOR A SPECIFIC PROJECT. AUTHORIZATION FOR ANY USE AND/OR PUBLICATION OF THIS REPORT OR ANY DATA, STATEMENTS, CONCLUSIONS OR ABSTRACTS FROM OR DERIVING FROM OUR REPORTS AND DRAWINGS, THROUGH ANY FORM OF PRINT OR ELECTRONIC MEDIA, INCLUDING WITHOUT LIMITATION POSTING OR REPRODUCTION OF SAME ON ANY WEBSITE, IS RESERVED PENDING NORWEST'S WRITTEN APPROVAL. IF THIS REPORT IS ISSUED IN AN ELECTRONIC FORMAT, AN ORIGINAL PAPER COPY IS ON FILE AT NORWEST CORPORATION AND THAT COPY IS THE PRIMARY REFERENCE WITH PRECEDENCE OVER ANY ELECTRONIC COPY OF THE DOCUMENT, OR ANY EXTRACTS FROM OUR DOCUMENTS PUBLISHED BY OTHERS.

SCALE: AS SHOWN
DATE: 2015-08-21
COORD. SYS.: UTM NAD 83 ZONE 10
DRAWN BY: VG REV'D BY: CK
DSGN BY: MD APP'D BY: SE

KGHM KGHM AJAX MINING INC.

AJAX PROJECT
TAILINGS STORAGE FACILITY
NORTH AND SOUTH EMBANKMENT
SECTIONS

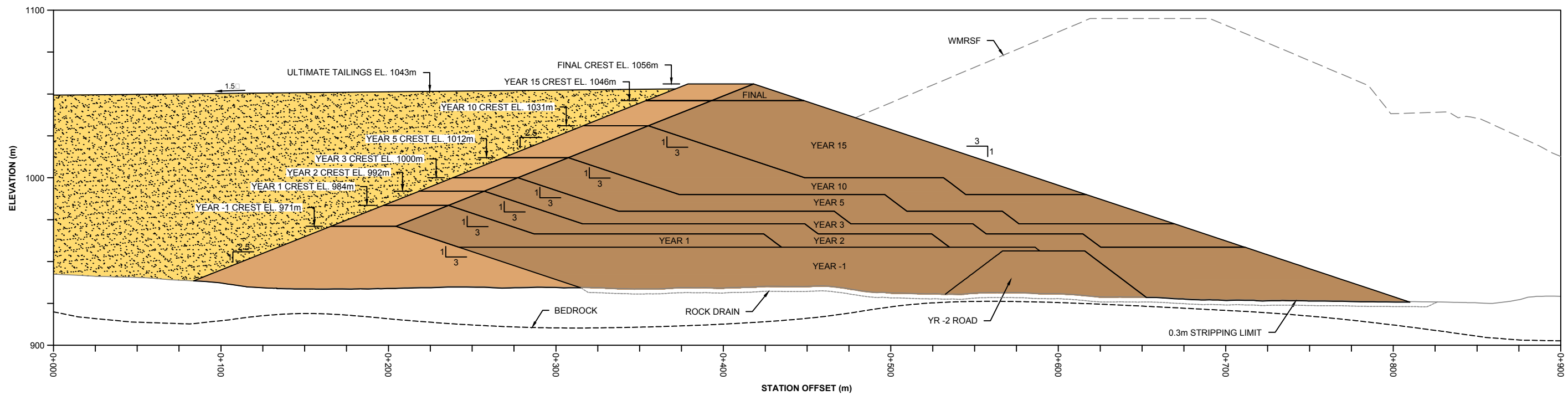
DRAWING NO.: C180-KA39-5100-00-008

REV.: 0

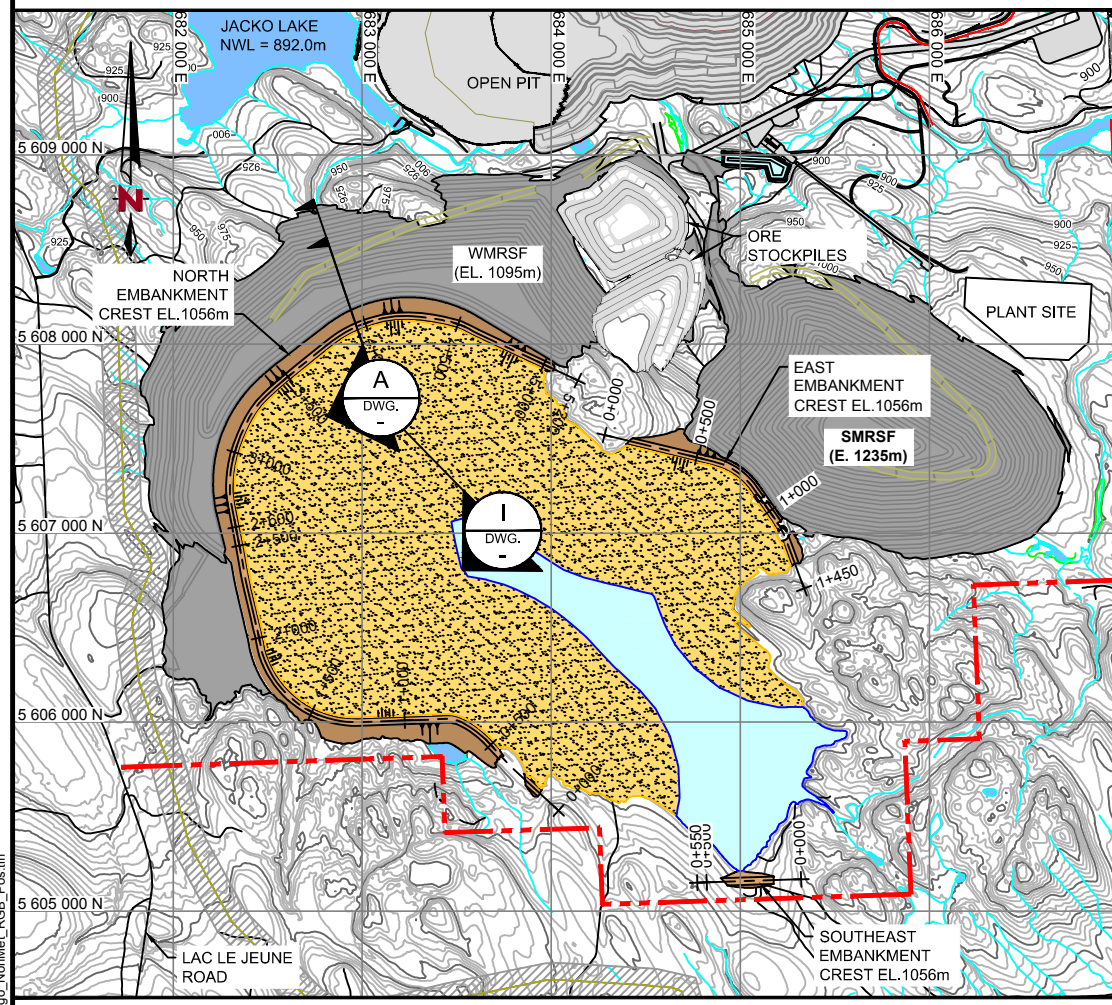
FILENAME: I:\PROJECTS\KMGHM AJAX_800809_6_CNV\T\DESIGN\SCDRAFTING\PRODUCTION\4 PRELIMINARY TAILINGS STORAGE FACILITY DESIGN REPORT\16) C180-KA39-5100-00-008 NORTH AND SOUTH EMBANKMENT - CROSS SECTIONS.DWG
 XREF FILE(S): Topo Large contours_5m_25m index_2010a.mxd; Pit & Stockpiles_Y20; Ajax Civil Roads Client; lightm; ajax_roads_all; Causeway & Barris; Hydro; Existing DH and TP; 150731 CHAINAGE; 150818 CentralCollectionPond(FLUOR); Phasing_Y20; 150821 Crusher Stockpile
 IMAGE FILE(S): KGHM_Logo_NonMet_RGB_Pos.tif
 TIME: 16:42:03 PLOT SCALE: 1:3.872
 DATE: 8/21/2015

REV.	DATE	DESCRIPTION	DWN	DSG	CHK	APR
0	2015-08-21	ISSUED AS FINAL	VG	MD	CK	SE
A	2015-07-31	ISSUED FOR REVIEW	VG	MD	CK	SE

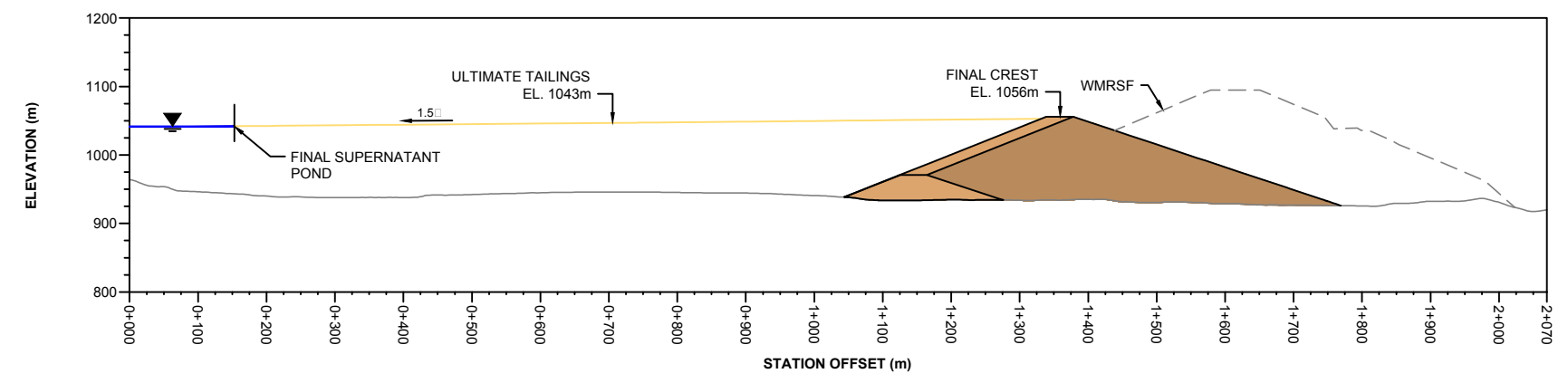
FILENAME: I:\PROJECTS\AJAX\AJAX_800909_6_CNV_T\DESIGN\SC\DRIFTING\PRODUCTION\4_PRELIMINARY_TAILINGS_STORAGE_FACILITY_DESIGN_REPORT\13_C180-KA39-5100-00-009_EMBANKMENT_STAGED_DEVELOPMENT_SECTION.DWG
 XREF FILE(S): Topo, Large contours, 5m, 25m index, 2010dam, Pit & Stockpiles_Y120, Ajax Civil Roads Client, Peterson Creek Diversion Pipe, Road Reduced, kgm, loads, all, KP YR 17 MINE PLAN W NV BF, Phasing_Year_20, Hydro, 150818 CentralCollectionPond(FLOOR): 150821 Crusher StockPile
 IMAGE FILE(S): KGHM_Logo, NonMet_RGB, Pos.tif
 DATE: 8/21/2015 TIME: 16:32:16 PLOT SCALE: 1:3.872



SECTION A
SCALE B
DWG. -



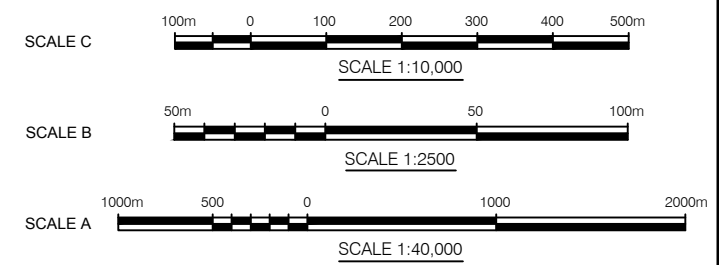
PLAN SCALE A



EMBankment and WMSRF SECTION I
SCALE C
DWG. -

- LEGEND:**
- TAILINGS (BEACH ABOVE WATER)
 - SUPERNATANT/CONTACT WATER POND
 - EXISTING WATER BODIES
 - COMPACTED MINE ROCK
 - MINE ROCK BUTTRESS
 - MINE ROCK STORAGE FACILITY (BY KGHM)
 - MINE PROPERTY BOUNDARY
 - RE-ALIGNED KINDER MORGAN PIPELINE (BY KGHM)
 - OPEN PIT (NOVEMBER 2014 MINE PLAN)
 - BEDROCK
 - + 0+000 ULTIMATE EMBANKMENT CREST CHAINAGE

NOTES:
1. INFRASTRUCTURE DESIGNED BY OTHERS.



AS A MUTUAL PROTECTION TO OUR CLIENT, THE PUBLIC, AND OURSELVES, ALL REPORTS AND DRAWINGS ARE SUBMITTED FOR THE CONFIDENTIAL INFORMATION OF OUR CLIENT FOR A SPECIFIC PROJECT. AUTHORIZATION FOR ANY USE AND/OR PUBLICATION OF THIS REPORT OR ANY DATA, STATEMENTS, CONCLUSIONS OR ABSTRACTS FROM OR BEHINDING OUR REPORTS AND DRAWINGS, THROUGH ANY FORM OF PRINT OR ELECTRONIC MEDIA, INCLUDING WITHOUT LIMITATION, POSTING OR REPRODUCTION OF SAME ON ANY WEBSITE, IS RESERVED PENDING NORWEST'S WRITTEN APPROVAL. IF THIS REPORT IS ISSUED IN AN ELECTRONIC FORMAT, AN ORIGINAL PAPER COPY IS ON FILE AT NORWEST CORPORATION AND THAT COPY IS THE PRIMARY REFERENCE WITH PRECEDENCE OVER ANY ELECTRONIC COPY OF THE DOCUMENT, OR ANY EXTRACTS FROM OUR DOCUMENTS PUBLISHED BY OTHERS.

SCALE:	1:2500
DATE:	2015-08-21
CO-ORD. SYS.:	UTM NAD 83 ZONE 10
DRWN BY:	SC
REV'D BY:	CK
DSGN BY:	MD
APP'D BY:	SE

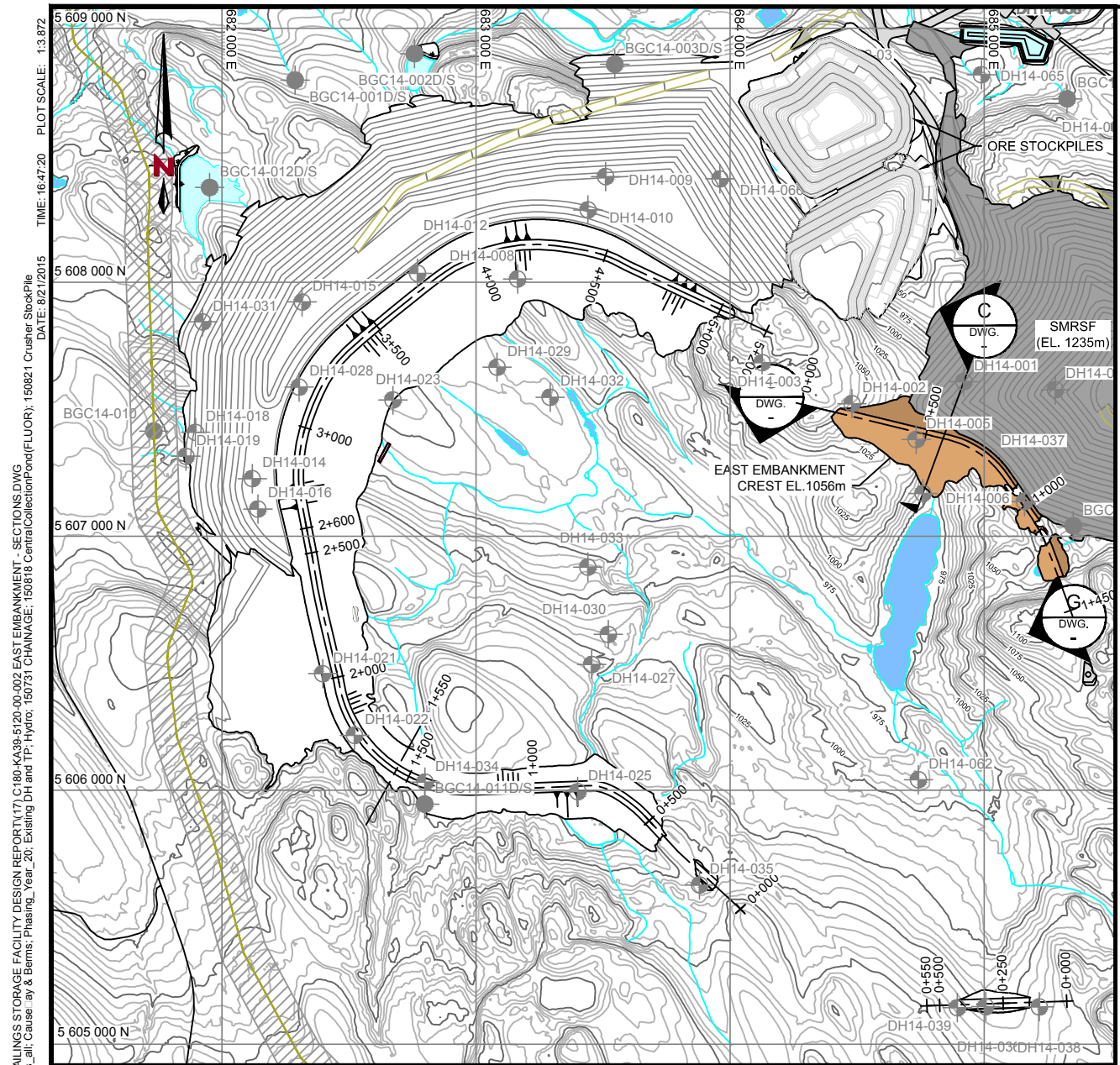
KGHM KGHM AJAX MINING INC.

AJAX PROJECT
TAILINGS STORAGE FACILITY
EMBANKMENT STAGED DEVELOPMENT SECTION

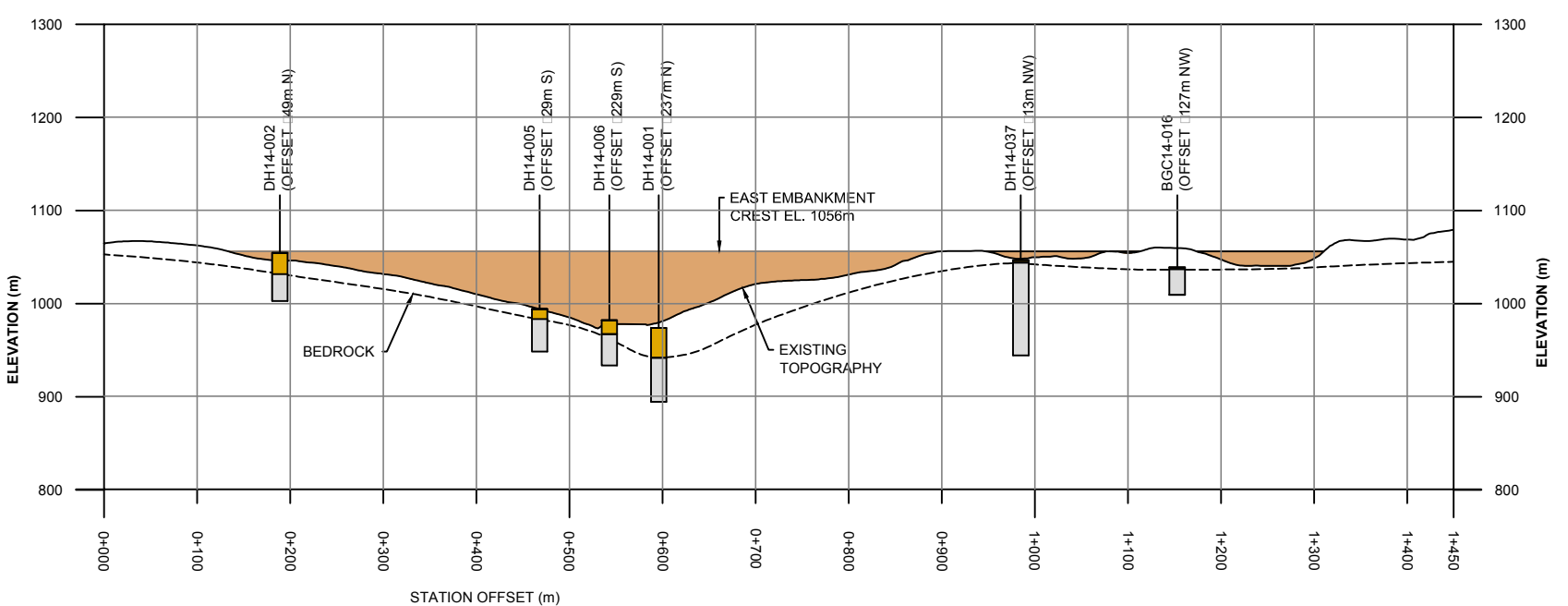
DRAWING NO.:	C180-KA39-5100-00-009	REV.:	0
--------------	-----------------------	-------	---

NORWEST

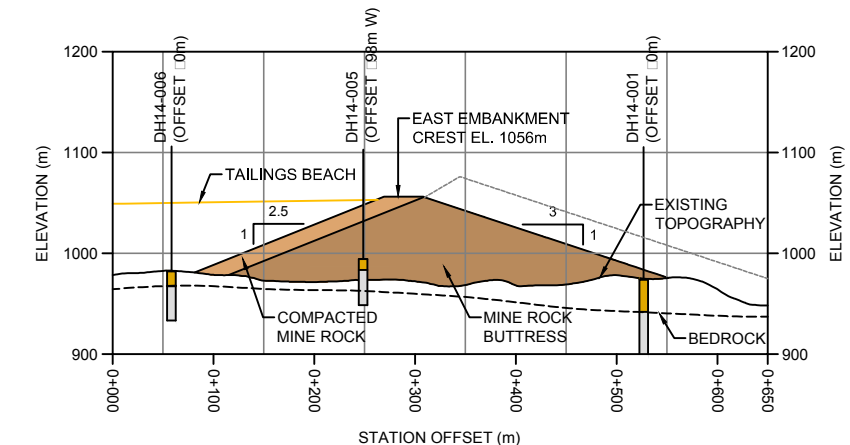
0	2015-08-21	ISSUED AS FINAL	SC	MD	CK	SE
A	2015-07-31	ISSUED FOR REVIEW	SC	MD	CK	SE
REV.	DATE	DESCRIPTION	DWN	DSG	CHK	APR



PLAN
SCALE A



SECTION G
SCALE B



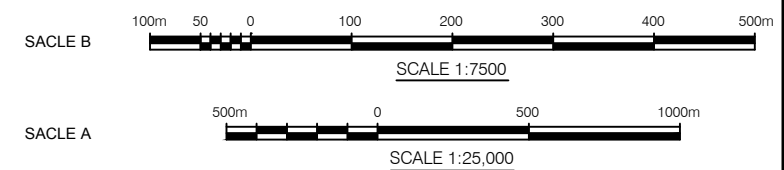
SECTION C
SCALE B

LEGEND:

- BEDROCK
- UNCONSOLIDATED OVERBURDEN
- COMPACTED MINE ROCK
- MINE ROCK BUTTRESS
- MINE ROCK STORAGE FACILITY (BY KGHM)
- CHAINAGE
- RE-ALIGNED KINDER MORGAN PIPELINE (BY KGHM)

REFERENCES:

1. TAILINGS STORAGE FACILITY DESIGN AND GENERAL SITE INFRASTRUCTURE BASED ON LAYOUTS PROVIDED BY KGHM ON OCTOBER 30, 2014.
2. ALL DESIGN DATA COORDINATES PROVIDED ARE IN METRES.
3. TOPOGRAPHY DATA BASED ON LIDAR PROVIDED BY KGHM (APRIL 2013).
4. KINDER MORGAN PIPELINE ALIGNMENTS PROVIDED BY KGHM ON NOVEMBER 4, 2014.
5. OPEN PIT OUTLINE BASED ON NOVEMBER 2014 MINE PLAN PROVIDED BY KGHM ON FEBRUARY 20, 2015.



FILENAME: I:\PROJECT\KAMH\AJAX_800\809_6_CNV_T\DESIGN\SCDDRAFTING\PRODUCTION\4_PRELIMINARY_TAILINGS_STORAGE_FACILITY_DESIGN_REPORT\17_C180-KA39-5120-00-02_EAST_EMBANKMENT_SECTIONS.DWG
 XREF FILE(S): Topo, Large contours, 5m, 25m index, 20, 10m, Plt & Stockpiles_Y20, Ajax Civil Roads Client, kghm, ajax_roads_all, Cause, ay & Bams, Phasing, Year_20, Existing DH and TP, Hydro, 150731_CHAINAGE, 1501818_CentralCollectorPond(FUOR), 150821_Crusher Stockpile
 IMAGE FILE(S): KGHM_Logo_NonMet_RGB_Pos.tif
 TIME: 16:47:20 PLOT SCALE: 1:3.872
 DATE: 8/2/2015

REV.	DATE	DESCRIPTION	DWN	DSG	CHK	APR
0	2015-08-21	ISSUED AS FINAL	VG	MD	CK	SE
A	2015-07-31	ISSUED FOR REVIEW	VG	MD	CK	SE

AS A MUTUAL PROTECTION TO OUR CLIENT, THE PUBLIC, AND OURSELVES, ALL REPORTS AND DRAWINGS ARE SUBMITTED FOR THE CONFIDENTIAL INFORMATION OF OUR CLIENT FOR A SPECIFIC PROJECT. AUTHORIZATION FOR ANY USE AND/OR PUBLICATION OF THIS REPORT OR ANY DATA, STATEMENTS, CONCLUSIONS OR ABSTRACTS FROM OR REPRODUCING OUR REPORTS AND DRAWINGS, THROUGH ANY FORM OF PRINT OR ELECTRONIC MEDIA, INCLUDING WITHOUT LIMITATION POSTING OR REPRODUCTION OF SAME ON ANY WEBSITE, IS RESERVED PENDING NORWEST'S WRITTEN APPROVAL. IF THIS REPORT IS ISSUED IN AN ELECTRONIC FORMAT, AN ORIGINAL PAPER COPY IS ON FILE AT NORWEST CORPORATION AND THAT COPY IS THE PRIMARY REFERENCE WITH PRECEDENCE OVER ANY ELECTRONIC COPY OF THE DOCUMENT, OR ANY EXTRACTS FROM OUR DOCUMENTS PUBLISHED BY OTHERS.

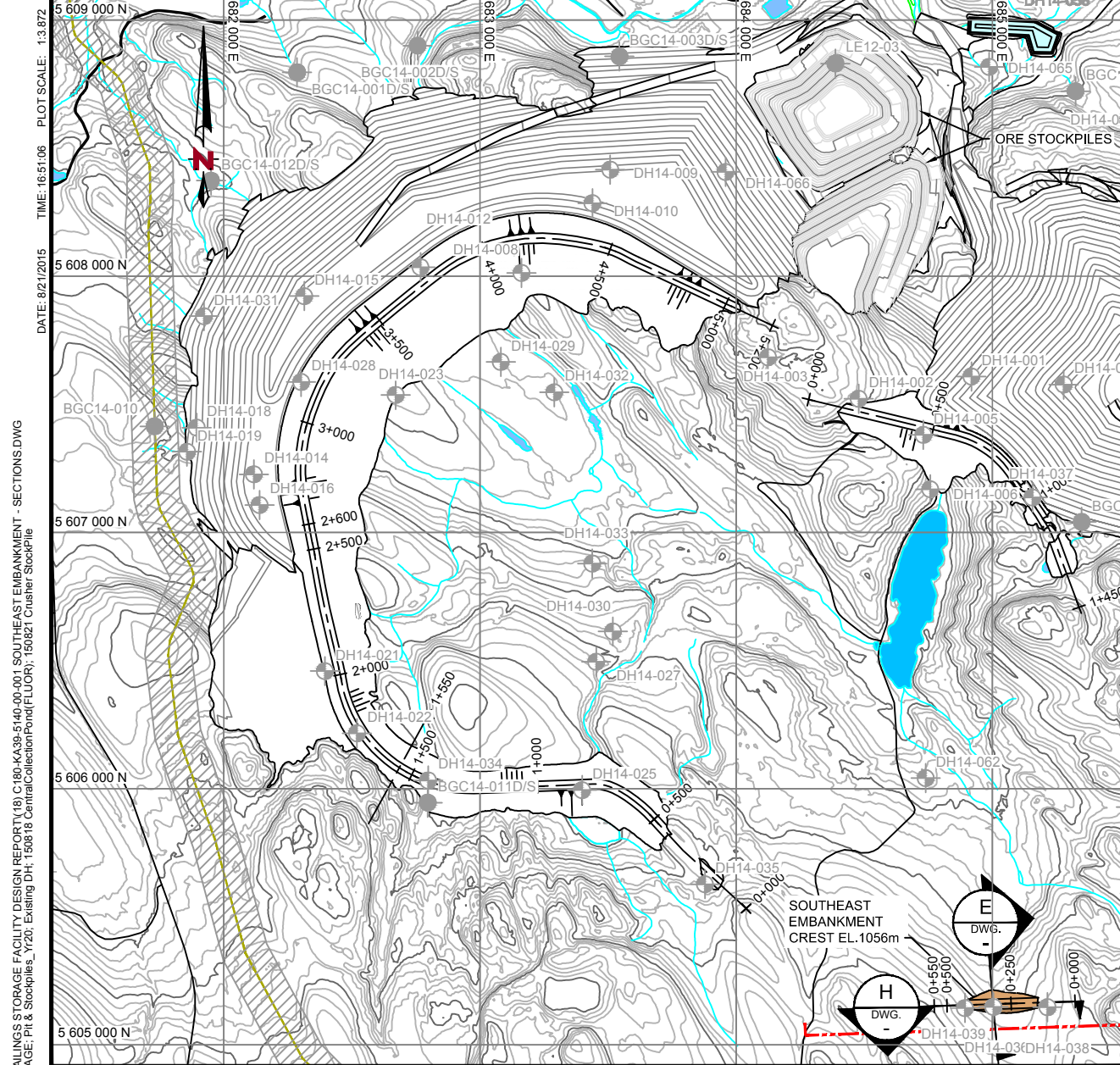
KGHM KGHM AJAX MINING INC.

AJAX PROJECT
TAILINGS STORAGE FACILITY
EAST EMBANKMENT
SECTIONS

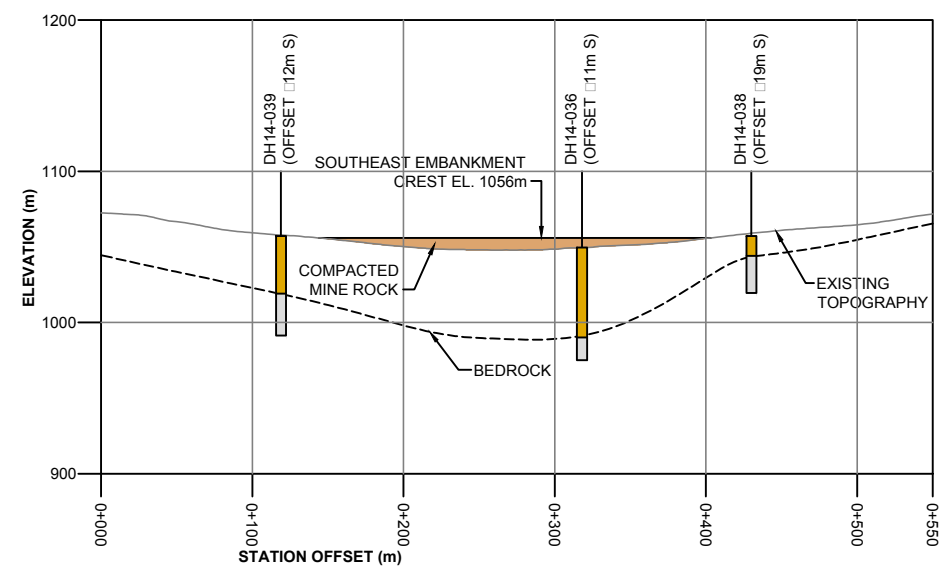
SCALE: AS SHOWN
DATE: 2015-08-21
CO-ORD. SYS.: UTM NAD 83 ZONE 10
DRWN BY: VG REV'D BY: CK
DSGN BY: MD APP'D BY: SE

DRAWING NO.: C180-KA39-5120-00-02
REV.: 0

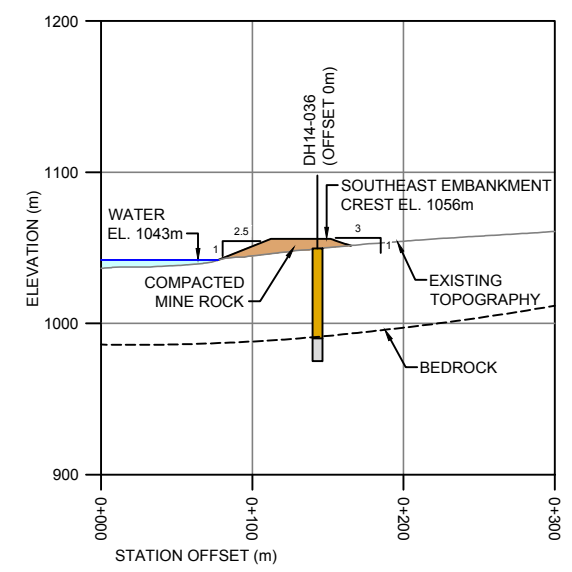
NORWEST



PLAN
SCALE A



SECTION H
SCALE B



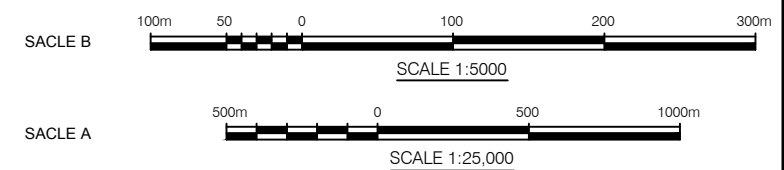
SECTION E
SCALE B

LEGEND:

- BEDROCK
- UNCONSOLIDATED OVERBURDEN
- COMPACTED MINE ROCK
- + 0+000 CHAINAGE
- RE-ALIGNED KINDER MORGAN PIPELINE (BY KGHM)

REFERENCES:

1. TAILINGS STORAGE FACILITY DESIGN AND GENERAL SITE INFRASTRUCTURE BASED ON LAYOUTS PROVIDED BY KGHM ON OCTOBER 30, 2014.
2. ALL DESIGN DATA COORDINATES PROVIDED ARE IN METRES.
3. TOPOGRAPHY DATA BASED ON LIDAR PROVIDED BY KGHM (APRIL 2013).
4. KINDER MORGAN PIPELINE ALIGNMENTS PROVIDED BY KGHM ON NOVEMBER 4, 2014.
5. OPEN PIT OUTLINE BASED ON NOVEMBER 2014 MINE PLAN PROVIDED BY KGHM ON FEBRUARY 20, 2015.



FILENAME: I:\PROJECT\AJAX_KA39_5140_00_001_SOUTHEAST EMBANKMENT - SECTIONS.DWG
 XREF FILE(S): Topo Large contours 5m 25m index_2010.dwg; kghm_gis_road_all_Phasings_Year_20_Hydro_150731_CentralCollectionPond(FLOOR); 150821_Crusher Stockpile
 IMAGE FILE(S): KGHM_Logo_NonMet_RGB_Pos.tif
 DATE: 8/21/2015
 TIME: 16:51:06
 PLOT SCALE: 1:3.872

0	2015-08-21	ISSUED AS FINAL	VG	MD	CK	SE
A	2015-07-31	ISSUED FOR REVIEW	VG	MD	CK	SE
REV.	DATE	DESCRIPTION	DWN	DSG	CHK	APR

AS A MUTUAL PROTECTION TO OUR CLIENT, THE PUBLIC, AND OURSELVES, ALL REPORTS AND DRAWINGS ARE SUBMITTED FOR THE CONFIDENTIAL INFORMATION OF OUR CLIENT FOR A SPECIFIC PROJECT. AUTHORIZATION FOR ANY USE AND/OR PUBLICATION OF THIS REPORT OR ANY DATA, STATEMENTS, CONCLUSIONS OR ABSTRACTS FROM OR REGARDING OUR REPORTS AND DRAWINGS, THROUGH ANY FORM OF PRINT OR ELECTRONIC MEDIA, INCLUDING WITHOUT LIMITATION, POSTING OR REPRODUCTION OF SAME ON ANY WEBSITE, IS RESERVED PENDING NORWEST'S WRITTEN APPROVAL. IF THIS REPORT IS ISSUED IN AN ELECTRONIC FORMAT, AN ORIGINAL PAPER COPY IS ON FILE AT NORWEST CORPORATION AND THAT COPY IS THE PRIMARY REFERENCE WITH PRECEDENCE OVER ANY ELECTRONIC COPY OF THE DOCUMENT, OR ANY EXTRACTS FROM OUR DOCUMENTS PUBLISHED BY OTHERS.

KGHM **KGHM AJAX MINING INC.**

AJAX PROJECT
TAILINGS STORAGE FACILITY
SOUTHEAST EMBANKMENT
SECTIONS

DRAWING NO.: C180-KA39-5140-00-001

SCALE: AS SHOWN
DATE: 2015-08-21
CO-ORD. SYS.: UTM NAD 83 ZONE 10
DRWN BY: VG [REV'D BY: CK]
DSGN BY: MD [APP'D BY: SE]

NORWEST

REV.: 0