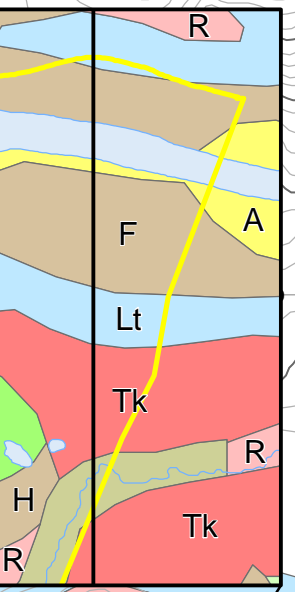
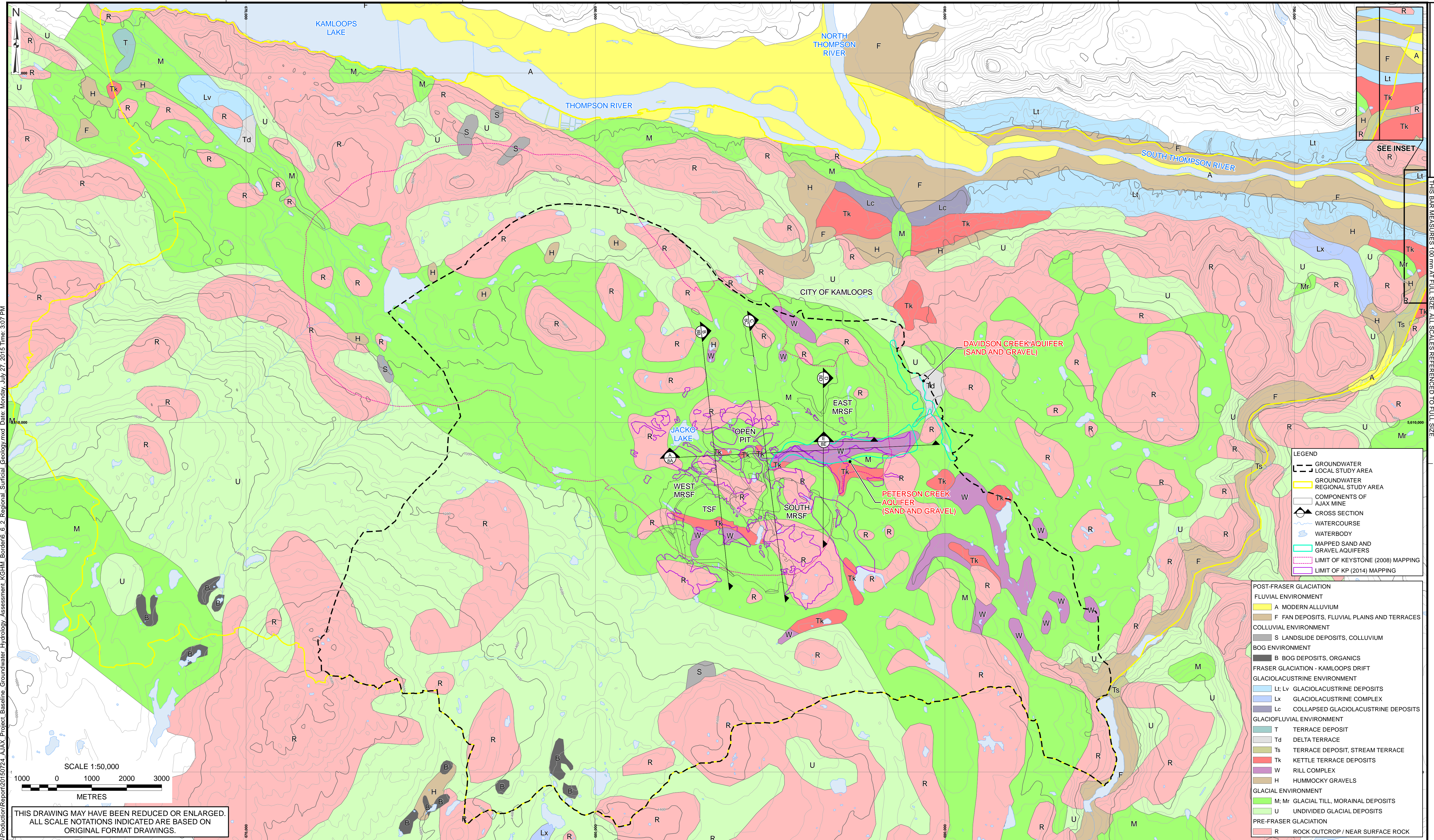


Appendix 6.6-E

Groundwater Quantity Drawings

AJAX PROJECT

**Environmental Assessment Certificate Application / Environmental Impact Statement
for a Comprehensive Study**



THIS BAR MEASURES 100 mm AT FULL SIZE. ALL SCALES REFERENCED TO FULL SIZE.

LEGEND

- GROUNDWATER LOCAL STUDY AREA
- GROUNDWATER REGIONAL STUDY AREA
- COMPONENTS OF AJAX MINE
- CROSS SECTION
- WATERCOURSE
- WATERBODY
- MAPPED SAND AND GRAVEL AQUIFERS
- LIMIT OF KEYSTONE (2008) MAPPING
- LIMIT OF KP (2014) MAPPING

POST-FRASER GLACIATION

FLUVIAL ENVIRONMENT

- A MODERN ALLUVIUM
- F FAN DEPOSITS, FLUVIAL PLAINS AND TERRACES

COLLUVIAL ENVIRONMENT

- S LANDSLIDE DEPOSITS, COLLUVIUM

BOG ENVIRONMENT

- B BOG DEPOSITS, ORGANICS

FRASER GLACIATION - KAMLOOPS DRIFT

GLACIOLACUSTRINE ENVIRONMENT

- Lt, Lv GLACIOLACUSTRINE DEPOSITS
- Lx GLACIOLACUSTRINE COMPLEX
- Lc COLLAPSED GLACIOLACUSTRINE DEPOSITS

GLACIOFLUVIAL ENVIRONMENT

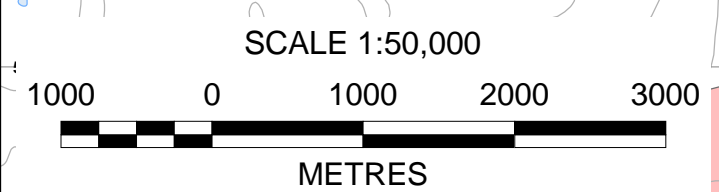
- T TERRACE DEPOSIT
- Td DELTA TERRACE
- Ts TERRACE DEPOSIT, STREAM TERRACE
- Tk KETTLE TERRACE DEPOSITS
- W RILL COMPLEX
- H HUMMOCKY GRAVELS

GLACIAL ENVIRONMENT

- M, Mr GLACIAL TILL, MORAINAL DEPOSITS
- U UNDIVIDED GLACIAL DEPOSITS

PRE-FRASER GLACIATION

- R ROCK OUTCROP / NEAR SURFACE ROCK



THIS DRAWING MAY HAVE BEEN REDUCED OR ENLARGED.
ALL SCALE NOTATIONS INDICATED ARE BASED ON ORIGINAL FORMAT DRAWINGS.

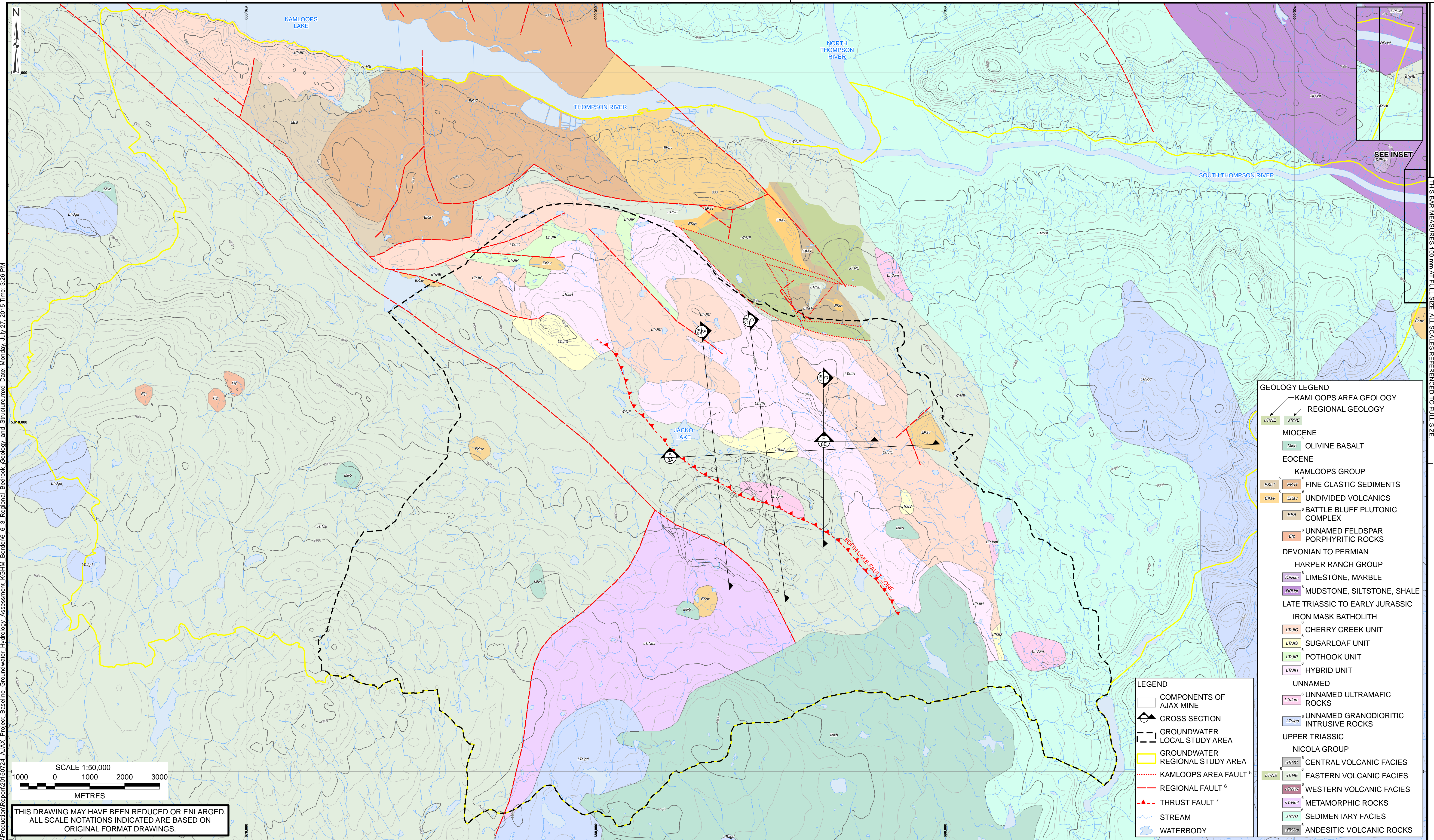
NOTES:

1. ALL DIMENSIONS ARE IN METRES UNLESS OTHERWISE NOTED.
2. MINE FACILITIES FROM KAM GENERAL ARRANGEMENT LAST UPDATED APRIL 15, 2015.
3. CONTOURS FROM NRCAN CANVEC. CONTOUR INTERVAL IS 20 m.
4. WATER COMPILED FROM ABACUS, CITY OF KAMLOOPS, AND NATIONAL HYDRO NETWORK.
5. PROJECTION IS NAD 83 UTM ZONE 10N.
6. UNLESS BGC AGREES OTHERWISE IN WRITING, THIS DRAWING SHALL NOT BE MODIFIED OR USED FOR ANY PURPOSE OTHER THAN THE PURPOSE FOR WHICH BGC GENERATED IT. BGC SHALL HAVE NO LIABILITY FOR ANY DAMAGES OR LOSS ARISING IN ANY WAY FROM ANY USE OR MODIFICATION OF THIS DOCUMENT NOT AUTHORIZED BY BGC. ANY USE OF OR RELIANCE UPON THIS DOCUMENT OR ITS CONTENT BY THIRD PARTIES SHALL BE AT SUCH THIRD PARTIES' SOLE RISK.

SCALE:	1:50,000	BGC BGC ENGINEERING INC. AN APPLIED EARTH SCIENCES COMPANY	PROJECT:	AJAX PROJECT GROUNDWATER QUANTITY EFFECTS ASSESSMENT		
DATE:	JUL 2015		TITLE:	REGIONAL SURFICIAL GEOLOGY		
DRAWN:	MIB, JDC	KGHM	PROJECT No.:	1125-007-03	DWG No.:	6.6-E-1
CHECKED:	CK					
APPROVED:	BM					

X:\Projects\1125-AJAX\07\GIS\Production\Report\20150724_AJAX_Project_Baseline_Groundwater_Hydrology_Assessment_KGHM_Border6.6.2_Regional_Surficial_Geology.mxd Date: Monday, July 27, 2015 Time: 3:07 PM

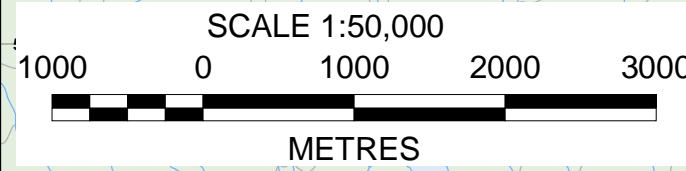
X:\Projects\1125_AJAX\07\GIS\Production\Report\20150724_AJAX_Project_Baseline_Groundwater_Hydrology_Assessment_KGHM_Border6.6.3_Regional_Bedrock_Geology_and_Structure.mxd Date: Monday, July 27, 2015 Time: 3:26 PM



THIS BAR MEASURES 100 mm AT FULL SIZE. ALL SCALES REFERENCED TO FULL SIZE.

GEOLOGY LEGEND	
KAMLOOPS AREA GEOLOGY	
REGIONAL GEOLOGY	
MIOCENE	
	OLIVINE BASALT
EOCENE	
KAMLOOPS GROUP	
	FINE CLASTIC SEDIMENTS
	UNDIVIDED VOLCANICS
	BATTLE BLUFF PLUTONIC COMPLEX
	UNNAMED FELDSPAR PORPHYRITIC ROCKS
DEVONIAN TO PERMIAN	
HARPER RANCH GROUP	
	LIMESTONE, MARBLE
	MUDSTONE, SILTSTONE, SHALE
LATE TRIASSIC TO EARLY JURASSIC	
IRON MASK BATHOLITH	
	CHERRY CREEK UNIT
	SUGARLOAF UNIT
	POTHOOK UNIT
	HYBRID UNIT
UNNAMED	
	UNNAMED ULTRAMAFIC ROCKS
	UNNAMED GRANODIORITIC INTRUSIVE ROCKS
UPPER TRIASSIC	
NICOLA GROUP	
	CENTRAL VOLCANIC FACIES
	EASTERN VOLCANIC FACIES
	WESTERN VOLCANIC FACIES
	METAMORPHIC ROCKS
	SEDIMENTARY FACIES
	ANDESITIC VOLCANIC ROCKS

LEGEND	
	COMPONENTS OF AJAX MINE
	CROSS SECTION
	GROUNDWATER LOCAL STUDY AREA
	GROUNDWATER REGIONAL STUDY AREA
	KAMLOOPS AREA FAULT ⁵
	REGIONAL FAULT ⁶
	THRUST FAULT ⁷
	STREAM
	WATERBODY



THIS DRAWING MAY HAVE BEEN REDUCED OR ENLARGED. ALL SCALE NOTATIONS INDICATED ARE BASED ON ORIGINAL FORMAT DRAWINGS.

- NOTES:
1. ALL DIMENSIONS ARE IN METRES UNLESS OTHERWISE NOTED.
 2. MINE FACILITIES FROM KAM GENERAL ARRANGEMENT DATED APRIL 15, 2015.
 3. WATER AND TOPOGRAPHY FROM NRCAN CANVEC. CONTOUR INTERVAL 20 m.
 4. READ, 1998.
 5. MASSEY ET AL, 2005.
 6. LOGAN AND MIHALYNUK, 2006.

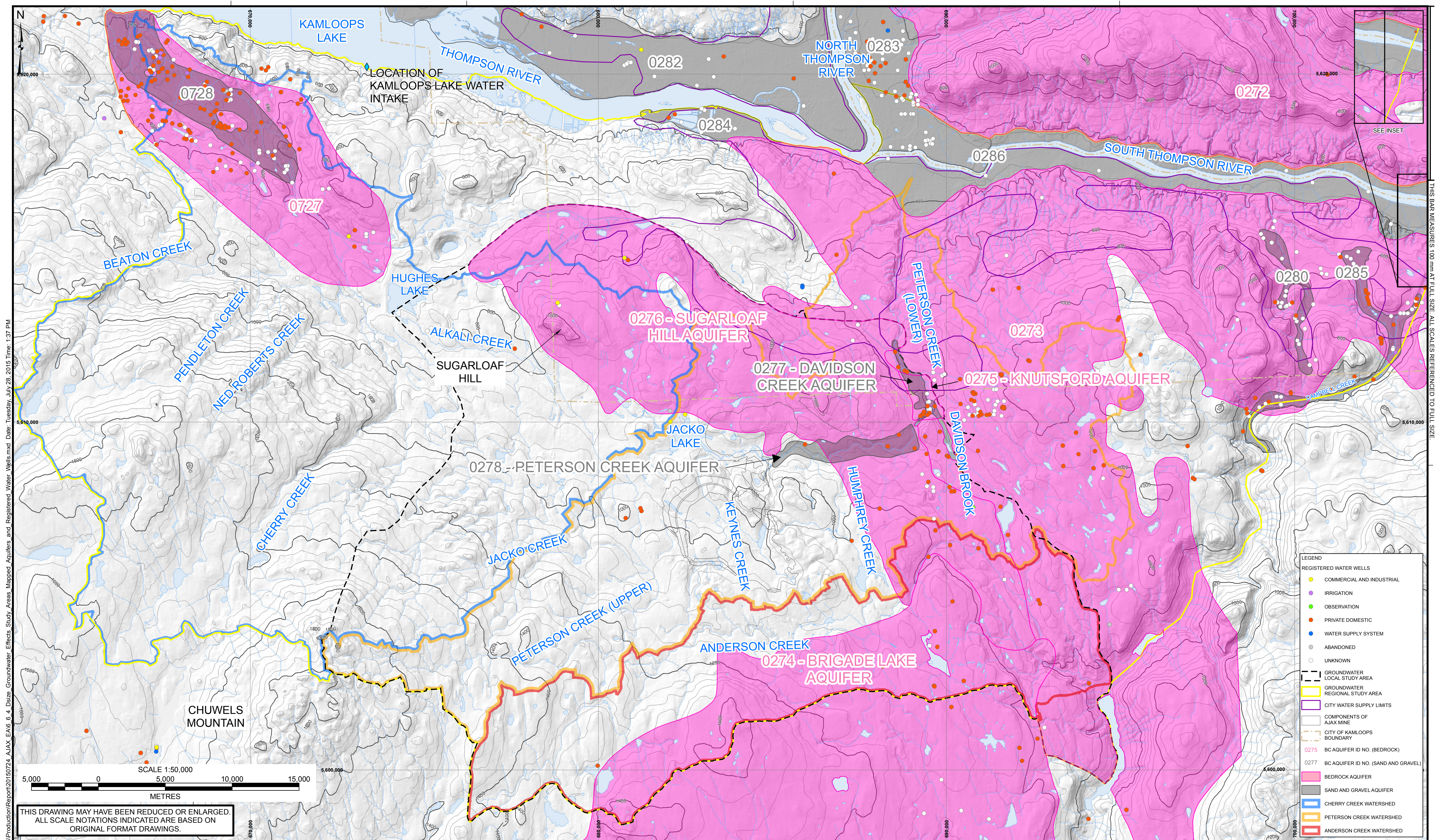
7. PROJECTION IS NAD 1983 UTM ZONE 10N.
8. UNLESS BGC AGREES OTHERWISE IN WRITING, THIS DRAWING SHALL NOT BE MODIFIED OR USED FOR ANY PURPOSE OTHER THAN THE PURPOSE FOR WHICH BGC GENERATED IT. BGC SHALL HAVE NO LIABILITY FOR ANY DAMAGES OR LOSS ARISING IN ANY WAY FROM ANY USE OR MODIFICATION OF THIS DOCUMENT NOT AUTHORIZED BY BGC. ANY USE OF OR RELIANCE UPON THIS DOCUMENT OR ITS CONTENT BY THIRD PARTIES SHALL BE AT SUCH THIRD PARTIES' SOLE RISK.

SCALE:	1:50,000
DATE:	JUL 2015
DRAWN:	MIB, JS
CHECKED:	CK
APPROVED:	BM

BGC ENGINEERING INC.
AN APPLIED EARTH SCIENCES COMPANY

CLIENT: **KGHM**

PROJECT:	AJAX PROJECT GROUNDWATER QUANTITY EFFECTS ASSESSMENT		
TITLE:	REGIONAL BEDROCK GEOLOGY AND STRUCTURE		
PROJECT No.:	1125007-03	DWG No.:	6.6-E-2



X:\Projects\1125_AJAX\07\GIS\Production\Report\20150724_AJAX_EA6_6_4_Dsize_Groundwater_Effects_Study_Areas_Mapped_Aquifers_and_Registered_Water_Wells.mxd Date: Tuesday, July 28, 2015 Time: 1:37 PM

THIS BAR MEASURES 100 mm AT FULL SIZE. ALL SCALES REFERENCED TO FULL SIZE.

THIS DRAWING MAY HAVE BEEN REDUCED OR ENLARGED.
ALL SCALE NOTATIONS INDICATED ARE BASED ON ORIGINAL FORMAT DRAWINGS.

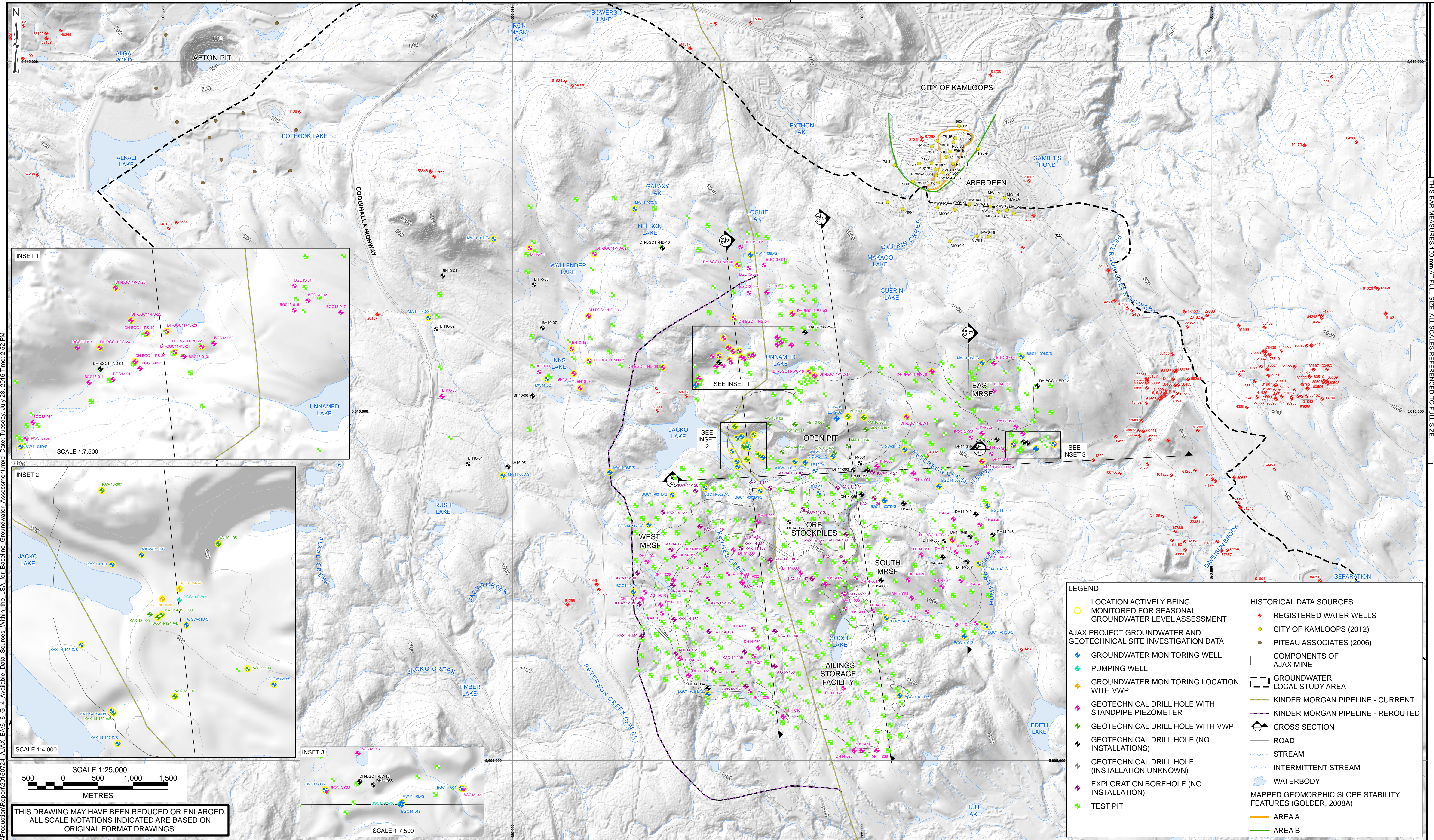
- NOTES:
1. ALL DIMENSIONS ARE IN METRES UNLESS OTHERWISE NOTED.
 2. BASE TOPOGRAPHIC DATA FROM NRCAN CANVEC. CONTOUR INTERVAL IS 20 m.
 3. PROJECTION IS NAD 1983 UTM ZONE 10N.
 4. WATER COMPILED FROM KAM, CITY OF KAMLOOPS AND NATIONAL HYDRO NETWORK.
 5. AQUIFER EXTENTS AND ID NUMBERS FROM BC WATER RESOURCES ATLAS, DOWNLOADED IN JANUARY 2015.
 6. UNLESS BGC AGREES OTHERWISE IN WRITING, THIS DRAWING SHALL NOT BE MODIFIED OR USED FOR ANY PURPOSE OTHER THAN THE PURPOSE FOR WHICH BGC GENERATED IT. BGC SHALL HAVE NO LIABILITY FOR ANY DAMAGES OR LOSS ARISING IN ANY WAY FROM ANY USE OR MODIFICATION OF THIS DOCUMENT NOT AUTHORIZED BY BGC. ANY USE OF OR RELIANCE UPON THIS DOCUMENT OR ITS CONTENT BY THIRD PARTIES SHALL BE AT SUCH THIRD PARTIES' SOLE RISK.

SCALE:	1:130,095
DATE:	JUL 2015
DRAWN:	IL, MIB
CHECKED:	CK
APPROVED:	BM

BGC ENGINEERING INC.
 AN APPLIED EARTH SCIENCES COMPANY

CLIENT:

PROJECT: AJAX PROJECT GROUNDWATER QUANTITY EFFECTS ASSESSMENT	
TITLE: GROUNDWATER EFFECTS STUDY AREAS, MAPPED AQUIFERS AND REGISTERED WATER WELLS	
PROJECT No.: 1125-007-03	DWG No.: 6.6-E-3



NOTES:

1. ALL DIMENSIONS ARE IN METRES UNLESS OTHERWISE NOTED.
2. BASE TOPOGRAPHIC DATA FROM KAM, CITY OF KAMLOOPS, AND GEOBASE INFORMATION. CONTOUR INTERVAL IS 20 m.
3. WATER COMPILED FROM KAM, CITY OF KAMLOOPS, AND NATIONAL HYDRO NETWORK. ROADS FROM NR CAN NATIONAL ROAD NETWORK.
4. GENERAL ARRANGEMENT OF MINE FACILITIES PROVIDED BY KAM ON APRIL 15, 2015.
5. PROJECTION IS NAD 1983 UTM ZONE 10N.
6. UNLESS BGC AGREES OTHERWISE IN WRITING, THIS DRAWING SHALL NOT BE MODIFIED OR USED FOR ANY PURPOSE OTHER THAN THE PURPOSE FOR WHICH BGC GENERATED IT. BGC SHALL HAVE NO LIABILITY FOR ANY DAMAGES OR LOSS ARISING IN ANY WAY FROM ANY USE OR MODIFICATION OF THIS DOCUMENT NOT AUTHORIZED BY BGC. ANY USE OF OR RELIANCE UPON THIS DOCUMENT OR ITS CONTENT BY THIRD PARTIES SHALL BE AT SUCH THIRD PARTIES' SOLE RISK.

SCALE:	AS SHOWN
DATE:	JUL 2015
DRAWN:	MIB
CHECKED:	CK
APPROVED:	BM

BGC ENGINEERING INC.
AN APPLIED EARTH SCIENCES COMPANY

CLIENT: **KGHM**

PROJECT:	AJAX PROJECT GROUNDWATER QUANTITY EFFECTS ASSESSMENT	
TITLE:	AVAILABLE DATA SOURCES WITHIN THE LSA FOR BASELINE GROUNDWATER ASSESSMENT	
PROJECT No.:	1125007-03	DWG No.:
		6.6-E-4

X:\Projects\1125-AJAX\07\GIS\Production\Report\20150724_AJAX_EA6_6_G_4_Available Data Sources Within the LSA for Baseline Groundwater Assessment.mxd Tuesday, July 28, 2015 Time: 2:52 PM

THIS BAR MEASURES 100 mm AT FULL SIZE. ALL SCALES REFERENCED TO FULL SIZE.