

Appendix 4.7-P

Ajax Project Models

AJAX PROJECT

**Environmental Assessment Certificate Application / Environmental Impact Statement
for a Comprehensive Study**



Photograph of a 3-D table top model used at open houses to show people the layout of the proposed Ajax Project.

OPEN PIT TOUR

KGHM International – Ajax Project
British Columbia



[View on Google Maps](#)



Google

©2015 Google - [Terms of Use](#) [Report a problem](#)

[View on Google Maps](#)

Screen capture showing opening scene of an 'open-pit tour' created by KAM using Google Maps. The tour is found at:

<http://www.ajaxmine.ca/open-pit-tour>

Start Here

Step 1

Download and install the latest version of Google Earth

Step 2

Find out how Google Earth works and what it can show

Step 3

Read answers to some questions that may arise when viewing the model

Step 4

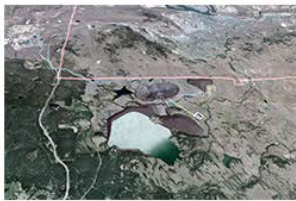
Click the blue "Download the Model" button below to view the 3D model in Google Earth

Step 1

Click the image below to navigate to the Google Earth download page. Follow the instructions there. Please note that Google Earth does not support these kinds of models on mobile platforms. PC and Mac are supported at this time.



Google Earth 3D Model



Year 23

All elements are shown at maximum size during the life of the mine.

[Download the Model](#)

Model Information

Date: June 23, 2014

Screen capture showing Welcome screen to a 3-D digital model that allows people to view the Project from any angle or location. The model uses Google Earth. The model is located at <http://www.ajaxmine3d.ca/>

