

Appendix 4.7-D

Site Tour Material

AJAX PROJECT

**Environmental Assessment Certificate Application / Environmental Impact Statement
for a Comprehensive Study**

Site Tour Appendix Enclosure List

The following contains:

- Tour script before the new GA, with maps
- Tour script after the New GA, with maps
- Representative ads in local newspapers, and other publications, as well as radio spots
- KGHM Ajax Web page dedicated to site tour
- Facebook post promoting tours

AJAX MINE TOUR SCRIPT
May 24, 2013

This is a script for the Ajax Mine Tour. It includes main points that should be mentioned at each vantage point.

Safety Requirements:

- Closed toed shoes with a sturdy sole are required.
- No tank tops or sleeveless shirts.
- No shorts or cut-offs.
- In the event of an emergency, required safety gear will be available on the bus.
- No smoking on site.
- If you have to leave the bus stay in a group, do not go off on your own.
- There is a personal protective equipment (PPE) free zone at the washrooms.

Meeting place: INKS LAKE junction on Lac Le Jeune Road

- Our studies indicate Inks Lake is an alkaline lake with no fish.
- We will use Inks Lake to catch runoff water from the TSF for re-use within the process. We will also be storing water extracted during the thickening process here as well – ie. The pond will not only collect TSF seepage. We will pump this water back up to the central pond located close to the plant site for reuse in the concentrator.
- Our proposed project's process water will be contained and used on-site. Inks Lake will be the collection spot for any water that comes in contact with the Tailings Storage Facility. This water will be treated and reused back in to the process. A surface erosion cover will be created on the sides of the Tailings Storage Facility composed of neutral waste rock which will provide a base for us to start concurrent reclamation which provides added stability to the slopes and erosion protection. This base will be covered by overburden material, topsoil and will be re-vegetated

Driving East down haul road:

- To your left and out of site is where all the truck traffic and light vehicle traffic will run. Teck Cominco put in the access road to Jacko Lake on your right. This road will continue to give the public access to Jacko Lake for fishing.
- The road that we are on is the old Afton Mines haul road and this will continue to be used as an internal mine road during construction and operations.
- At Jacko Lake we will make a left turn into the valley to go to the processing facility area. A berm will be constructed for noise and visual barriers for the fishermen on Jacko Lake. There will also be a catchment pond to collect runoff from the process facilities and prevent any water from the plant site from entering Jacko Lake. This water will be pumped back to the central water storage pond and utilized within the milling process.

As you drive through the Valley (North at Jacko Lake):

- We are driving through the area where our processing plant will be built.
- The custom design of our plant makes use of the topography.
- We chose the valley to minimize visibility of the processing plant and trucks to the city and Jacko Lake. Additionally, the valley is a good choice for the processing plant because the natural land

depression will help minimize light and noise to the city and surrounding area. We are currently working on studies to determine the level of noise and light the whole mine facility will emit.

Stop at top of hill past the plant site (truck maintenance shop):

- We just crossed the Kinder Morgan pipeline. It used to run directly through the West Pit, but Teck worked with Kinder Morgan to move the pipeline in the 80's in order to proceed with their mining operations.
- Point out the edge of the North Waste Rock Management facility. KGHM is working with Kinder Morgan to ensure the safety and integrity of the pipeline with respect to mining practices and infrastructure locations.
- After the 23 year mine life, we will reclaim the hills by re-contouring and seeding them, much like you see here, so that they blend in with the current topography. To the south you can see a reclaimed waste dump from mining operations in the 80's and 90's.
- As you can see from standing here, you cannot see Kamloops. Our studies indicate that with an average height of 189 metres, the waste dumps will not be visible from the Aberdeen or Pineview areas. They could, however, be visible from other areas in the community.
- To our left is Coal Hill and beyond that is Aberdeen.
- If you look eastward you can see the Kamloops City Boundary, which is the fence-line, off in the distance. The Ajax pit and the East Waste Rock Management Facility are outside the Kamloops City limits. The North Waste Rock Management Facility and the ore stockpiles will be inside the Kamloops City limits. The Kamloops City limits run through the center of the Tailings Storage Facility – half of the facility is in Kamloops, half is in the TNRD.

Stop at Jacko Lake by stake designating edge of the pit:

- Our mine plan was developed around preserving Jacko Lake and Peterson Creek.
- We will construct a visual barrier similar to the one you see there, but taller.
- We've drilled three holes between Jacko Lake and the West Pit Wall. To date, we have found there is no connection between lake water levels and the pit. We have a second drill program planned to further firm up findings in our efforts to ensure we protect Jacko Lake
- We will be installing a small earthen dam to prevent overflow from Jacko Lake into our pit during high rain events. A fisheries compensation plan is being developed and will be presented in our EA application.
- Over there by the white stake, where we stopped the bus, is where the Pit starts.

Stop at West Pit:

- This is the West Pit, originally mined by Afton Operating Corp. most recently in 1997.
- This pit has stood here untouched for more than 15 years and our consultants are using this as a test base for our studies. (examples of studies: Blasting, water quality and Acid Rock Drainage, geotechnical analysis)

Stop at East Pit:

- At the life of the mine the Ajax Pit will be 261 hectares. It will be 2.5 km by 1.5 km by 450 m. If you look to the east where the wooden corrals are, that will be the eastern edge of the pit.
- Looking to the East, you can see where we will put the East Waste Rock Management Facility.
- The ranch land surrounding the mine site is operated by the Sugarloaf Ranch which is owned by KGHM Ajax. We will be looking after our staff and our cattle operations throughout the life of the mine

- On the opposite hill slope is the explosive storage facility. And, then, over here , you can see Goose Lake Road, leading to the Knutsford area. The Explosive storage facility is located on the opposite hill slope.

Point of Interest: In 2008 a movie starring Shannon Doherty was filmed in the east pit. *The Lost Treasures of the Grand Canyon*. The DVD is currently selling for \$8 on Amazon.com.

Return trip:

Discuss Peterson Creek/Water Usage:

- We will divert a portion of Peterson Creek to protect it. The Peterson Creek channel has been altered and dredged by local ranchers in the past to improve flow for downstream irrigation supplies.
- We are not the first to divert the Creek; Teck was the last to do so in the '80's.
- Peterson Creek and Jacko Lake are under the responsibility of a water bailiff who controls the water levels and reports back to the users.
- We respect current water rights on Jacko Lake and Peterson Creek and have designed the mine with these in mind.

- Point out and talk about the reclaimed waste rock facility across the valley, on the far side of Peterson Creek. Discuss that it was planted and reclaimed after Teck stopped mining. Note the cattle grazing.

- Time for Q&A

- Thank the tour participants for taking time out of their day to come and visit the mine site and remind them of the 3D model available at www.ajaxmine.ca

KGHM International Ajax Project

Building on a History of Mining

Copper, gold and iron mineralization was discovered at the Iron Mask Mine near Kamloops, BC in the 1880s, launching the beginning of mineral exploration in the Thompson Nicola region. Today, Kamloops is a resource-rich region and host to several historic and operating mines, along with many active exploration and development projects, including the Ajax Project.

The original Afton copper deposit was found by Chester F. Millar in the mid-1960s. The Afton Mine was acquired and operated by Teck from 1987 until 1997, when the mine closed. KGHM International became the Ajax Project operator in September 2012. We have a well-earned reputation for operating responsibly and safely and for supporting the communities in which our projects are located, and we will do the same in Kamloops.

330 Seymour St, Kamloops, BC V2C 2G2
T: 250-374-5446; F: 250-374-5443
info@ajaxmine.ca | www.ajaxmine.ca



Ajax Mine Tour 2013



KGHM
INTERNATIONAL
AJAX PROJECT

KGHM
INTERNATIONAL
AJAX PROJECT



Fresh Water Pipeline

Thickened Tailings Emergency Pond

Tailings Thickening Plant

Tailings Storage Facility

North Waste Rock Storage Facility

Stockpile

Processing Plant

Inks Lake

Tailings Line

Jacko Lake

Ajax Pit

City of Kamloops Boundary

Proposed Powerline

East Waste Rock Storage Facility

City of Kamloops

Urban Growth Boundary

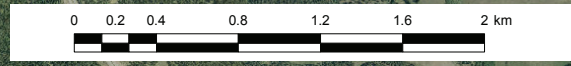
Coquihalla Highway

Lac Le Jeune Road

Conceptual Peterson Creek Diversion

Peterson Creek

Explosive Storage



AJAX MINE TOUR SCRIPT
June 2014

Safety Requirements:

- Closed toed shoes with a sturdy sole are required.
- No tank tops or sleeveless shirts.
- No shorts or cut-offs.
- In the event of an emergency, required safety gear will be available on the bus.
- No smoking on site.
- If you have to leave the bus stay in a group, do not go off on your own.
- There is a personal protective equipment (PPE) free zone at the washrooms.

Stop One: *Start of the tour, near main gate and within sight of Inks Lake*

- The previous mine plan proposed by Abacus placed various mine structures such as a dry tailings storage facility, the north waste rock pile and the stockpile north of Jacko Lake and close to or in City limits.
- KGHMI listened to residents over the past several months who had expressed concerns about the proximity of these structures to City neighbourhoods. Much of the mine's infrastructure has now moved south away from the city.
- Inks Lake will not be affected by mine operations. The views from Inks Lake and the nearby Coquihalla Highway will not be affected.
- Lac Le Jeune Road will no longer pass through the centre of mine operations.

Stop Two: Jacko Lake nearest boat public boat launch

- Our new mine plan will help to protect and preserve the quality of the sport fishing experience and aesthetics at Jacko Lake.
- We've drilled between Jacko Lake and the west pit. To date, we have not found anything to indicate there will be leakage of water from the lake to the pit. The work of studying Jacko Lake and measures required to ensure it is protected continue.
- We will build a temporary dam across the north arm of the lake because we will be required to remove the Kinder Morgan pipeline, which runs beneath it. A fisheries compensation plan is being developed and will be presented in our EA application.
- That part of the lake did not exist until the late 1980s, when Teck raised the level of the water dam, which increased the depth of the lake overall by more than a metre. The area being removed from the lake was never part of the historic Jacko Lake footprint.

Stop Three: Further up from the lake, in sight of the boundary for the pit

- Show where the boundaries of the future pit will traverse, using flags as reference. Nothing about the design or shape of the pit has changed, other than the walls might be a bit steeper.
- “You mine ore where you find it.”
- Point out and talk about the reclaimed waste rock facility across the valley, on the far side of Peterson Creek. Discuss that it was planted and reclaimed after Teck stopped mining. Note the cattle grazing, if there are any. Alternatively, you might say the area is used extensively by cattle.
- “After the 20-year mine life, we will reclaim the hills by re-contouring and seeding them, much like you see here, so that they blend in with the current topography. To the south you can see a reclaimed waste dump from mining operations in the 80s and 90s.”

Driving over KM line on main road:

- “We just crossed the Kinder Morgan pipeline. It used to run directly through the west pit, but Teck worked with Kinder Morgan to move the pipeline in the 80s so Teck could proceed with their mining operations. We are in discussions with KM regarding moving the line to a new route.”

Driving past west pit:

- This is the west pit, originally mined by Afton Operating Corp., most recently in the 1990s until 1997.
- This pit has been here untouched for more than 15 years and our consultants are using this as a test base for many ongoing studies, including water quality, acid rock drainage, geotechnical analysis

Driving past east pit:

- At the life of the mine the Ajax pit will be about 260 hectares. It will be 2.5 km by 1.5 km by 450 metres. If you look to the east where the wooden corrals are, that will be the eastern edge of the pit. Our plan joins and excavates these two existing pits.
- The ranch land surrounding the mine site is operated by the Sugarloaf Ranch which is owned by KGHM Ajax. We will be looking after our staff and our cattle operations throughout the life of the mine

Option for a Trivial Pursuit/Cliff Clavin moment: In 2008, a movie starring Shannon Doherty was filmed here in the east pit, called *The Lost Treasures of the Grand Canyon*. Filming began on April 26, 2008, and ended on May 14, 2008, a 19-day stretch. The reception of the film was generally poor receiving an average 2 out of 5 stars on Amazon.com. Critics cited poor CGI, an incoherent storyline and "d-grade" acting. The DVD is currently selling for \$8 on Amazon.com.

Stop Four: Top of the hill just to the south of the east pit. People can disembark the bus.

- At the end of mine operations, this spot will be about 500 metres above the bottom of the pit. Looking south, we have an excellent view of where many of the mine’s facilities will be located.
- The ore processing plant, crusher and coarse ore stockpile will all be south of Goose Lake Road, which you can see in the valley below. The TSF will be to the right. Waste rock will be stored here as well.

- Looking to the east, you can see where we will put the east waste rock storage facility.
- This printout of a digital illustration here shows what the view will most probably look like from this point at the end of mine operations.
- In the previous mine plan many of these structures would have been located close to Kamloops behind us, as many as two kilometres farther to the north.

Return trip:

As you pass by Jacko Lake again, discuss Peterson Creek/water usage:

- We will divert a portion of Peterson Creek, which runs out of the dam outlet on the other side of the lake, to protect it. A pipeline will run to the north of the pit and rejoin Peterson Creek in its watershed farther to the south.
- The Peterson Creek channel has been altered and dredged by local ranchers in the past to improve flow for downstream irrigation supplies.
- We are not the first to divert the Creek; Teck was the last to do so in the 1980s.
- Peterson Creek and Jacko Lake are under the responsibility of a water bailiff who controls the water levels and reports back to the users.
- We respect current water rights on Jacko Lake and Peterson Creek and have designed the mine with these in mind.

Q&A/comment cards at the start point, concluding the tour.

KEY MESSAGE “CHEAT SHEET”

WE’VE LISTENED. WE’VE MOVED OUR FACILITIES FARTHER AWAY AND CLOSER TOGETHER.

These moves create **real benefits to the community and the project;**

LESS DUST
 MORE REUSE OF WATER
 LESS VISUAL IMPACT

Our new mine plan is part of ensuring **the most VIABLE Project;**

ECONOMIC
 ENVIRONMENTAL
 SOCIAL

We believe we have done the right things for the right reasons.

Changes and Benefits

1 – Condensed mine plan footprint Less truck traffic + Smaller fleet = **LESS DUST**
 Operations and facilities less visible = **YOU WONT SEE IT** from
 highway

Facilities are closer together so materials don't move as far = **LESS DUST**

New opportunities for recreation north of pit

2 – Tailings Storage

Farther away from Aberdeen and Coquihalla Highway

Traditional and proven technology = **SAFER + LESS DUST**

Be like a man-made lake instead of high pile = **LESS VISUAL IMPACT**

More re-use of natural materials = **EASIER TO RECLAIM**

3 – Wastewater + Water Use

Exploring possibility of using City wastewater (grey water) in mine operations = **LESS ENV. IMPACT**

Will use less fresh water from Kamloops Lake = **LESS ENV. IMPACT**

COMMUNITY / CONSULTATION

We care about the same things

Consultation with the community is ongoing and EVERY DAY

We are building **LONG TERM RELATIONSHIPS**

We will be open and transparent

“WE BELIEVE THESE CHANGES MAKE IT EASIER FOR COMMUNITY TO SUPPORT THIS PROJECT.”

EA APPROVAL PROCESS

EA process has not changed

We are still at the early most important stage of a mine's life

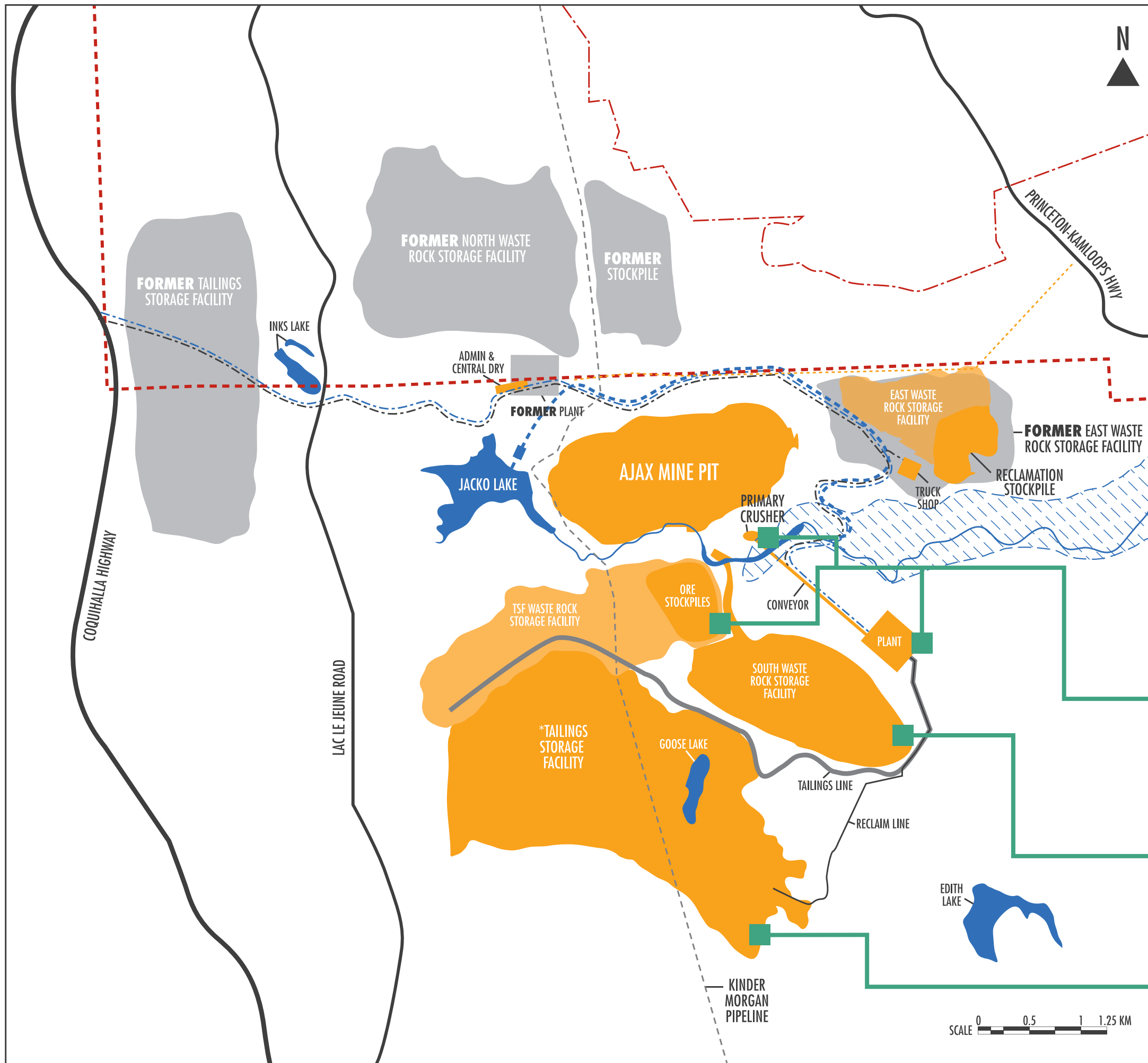
EA Submission March 2015 - Anticipate approval March 2016

ECONOMIC BENEFITS Project will create 500 jobs = more people can work here instead of away

We've invested \$100 M to date

We'll spend more than \$1 billion by end of construction

We will create new demand for housing, meals, services



LEGEND:

- - - URBAN GROWTH BOUNDARY
- - - CITY OF KAMLOOPS BOUNDARY
- - - POWERLINE PROPOSED
- - - ROADS PROPOSED
- - - WATERLINE PROPOSED
- - - PETERSON CREEK DIVERSION
- PETERSON CREEK
- ▨ PETERSON CREEK AQUIFER
- FORMER FACILITY LOCATIONS
- NEW FACILITY LOCATIONS

KEY LOCATION CHANGES:

PROCESSING PLANT, CRUSHERS AND TEMPORARY ORE STOCKPILES HAVE MOVED MORE THAN TWO KILOMETRES FARTHER AWAY FROM THE CITY. MOVING THESE FACILITIES CLOSER TO THE PIT WILL ALSO REDUCE HAUL TRUCK USE.

THE WASTE ROCK STORAGE FACILITY HAS MOVED 4½ KILOMETRES FROM ABERDEEN NEIGHBOURHOODS. THE ORIGINAL LOCATION WAS PREVIOUSLY LOCATED 1½ KILOMETRES FROM THE COMMUNITY.

THE TAILINGS STORAGE FACILITY MOVES 2½ KILOMETRES AWAY FROM THE COQUIHALLA HIGHWAY. OUR CONVENTIONAL TAILINGS STORAGE FACILITY WAS PREVIOUSLY PROPOSED TO BE LOCATED AT INKS LAKE.

*PENDING KGHM AJAX BEING IN A POSITION TO RELEASE THE RESULTS OF ITS CONDEMNATION DRILLING PROGRAM.

KGHM International Ajax Project



Do you want to visit the proposed Ajax Mine site and learn more about our project plans? Join us on a tour.

Tours will run Thursdays and Saturdays at 10:00am and 1:00pm, weather permitting. Space is limited and registration is required.

Call 250-374-5446 or email info@ajaxmine.ca.

Visit www.ajaxmine.ca for more information.

330 Seymour St, Kamloops, BC V2C 2G2
T: 250-374-5446; F: 250-374-5443
info@ajaxmine.ca | www.ajaxmine.ca



KGHM
INTERNATIONAL
AJAX PROJECT

TAKE AN ON-SITE TOUR OF THE PROPOSED AJAX PROJECT



TOURS ARE APPROXIMATELY 60 MINUTES IN LENGTH
AND BEGIN AT THE INKS LAKE ROAD OVERPASS ALONG
LAC LE JEUNE ROAD. TOURS OCCUR:

■ **THURSDAYS** - 1:00PM ■ **SATURDAYS** - 10:00AM

**To book your tour and
for further details call
the KGHM office at:**

250-374-5446

KGHM
INTERNATIONAL
AJAX PROJECT

AJAXMINE.CA



BROADCAST RADIO TEARSHEET

NL BROADCASTING LTD.

611 Lansdowne Street, Kamloops, BC V2C 1Y6 Telephone: (250) 571-5217 or 372-2292 Facsimile: (250) 372-2293

Email – cdoherly@radionl.com

CHNL 610 AM: KAMLOOPS CKRV 97.5 FM: KAMLOOPS CJKC-FM: KAMLOOPS CJNL 1230 AM: MERRITT

CLIENT: AJAX MINE	PRODUCT: Site Tours
FILE NAME: KGHM (Tours) 07-14-1	LENGTH: 30
ID#: 1226	WRITER: Supplied
REP: MEL	

DATE: July 28 to Further

PROD: MUSIC STREET 6 Promo Place trk 32

Here's your chance to visit the proposed Ajax Mine Site and learn more about KGHM International's **new** plans for the project from a knowledgeable guide. Join one of our Site Tours - **Thursdays at one p.m. and Saturdays at ten a.m.** Space is **limited** and registration is **required**. - To register call 250-374-54-46. Explore the history of the Mine Site and find out what the mine will mean for you and for Kamloops. For more information visit Ajax Mine dot ca

- e-mail or initial and fax back your approval to the Creative Department. Changes made after production may require three (3) days notice to accommodate. Phone (250) 372-2292 / Fax (250) 372-2293. NOTE: scripts and audio are the property of NL Broadcasting Ltd. Thank You



BROADCAST RADIO TEARSHEET

NL BROADCASTING LTD.

611 Lansdowne Street, Kamloops, BC V2C 1Y6 Telephone: (250) 571-5217 or 372-2292 Facsimile: (250) 372-2293

Email – cdoherly@radionl.com

CHNL 610 AM: KAMLOOPS CKRV 97.5 FM: KAMLOOPS CJKC-FM: KAMLOOPS CJNL 1230 AM: MERRITT

CLIENT: AJAX MINE	PRODUCT: Site Tours
FILE NAME: KGHM (Tours) 07-14-1	LENGTH: 30
ID#: 1289	WRITER: Supplied
REP: MEL	

DATE: July 28 to Further

PROD: MUSIC STREET 6 Promo Place trk 32

Here's your chance to visit the proposed Ajax Mine Site and learn more about KGHM International's **new** plans for the project from a knowledgeable guide. Join one of our Site Tours - **Thursdays at one p.m.** and **Saturdays at ten a.m.** Space is **limited** and registration is **required**. To register email info at Ajaxmine.ca. Explore the history of the Mine Site and find out what the mine will mean for you and for Kamloops. For more information visit [Ajax Mine dot ca](http://Ajaxmine.ca).

- e-mail or initial and fax back your approval to the Creative Department. Changes made after production may require three (3) days notice to accommodate. Phone (250) 372-2292 / Fax (250) 372-2293. NOTE: scripts and audio are the property of NL Broadcasting Ltd. Thank You



SITE TOURS

[Project Facts](#)[Management Team - Ajax Project](#)[Project History
Interactive Timeline](#)[Project Economics](#)[Gallery](#)[Site Tours](#)[Employment](#)[Project Information
Data Centre](#)[Links](#)[FAQS](#)[3D Digital Project Model](#) [Print This Page](#) [Email This Page](#)

AJAX PROJECT SITE TOURS

KGHM International is again hosting Ajax Project site tours. Tours will run every Thursday at 1 p.m. and Saturday at 10 a.m., conditions permitting. Participants will enjoy a tour of the site with a knowledgeable guide and will learn about the site's long mining history and KGHM International's plans for the Ajax Project.

Registration:

As seating is limited, we require all attendees to register for a specific tour.

Please contact us directly at 250-374-5446 or email us at ajax.project@kgmh.com to register for a tour.

Please read the [Frequently Asked Questions](#).

Ajax Tour Frequently Asked Questions:

Q: How long are the tours?

A: The Ajax mine tour is approximately 60 minutes in length and will begin at the Inks Lake Road overpass along Lac Le Jeune Road.

Q: Where do we meet for the tour and at what time?

A: The site tour bus will be waiting at Inks Lake Road on the overpass where you will be able to park your vehicle. (see Directions below)

Q: Are children allowed?

A: Because of safety regulations, all tour participants must be ages 18 or older.

Q: What should I wear?

A: Closed-toe, hard-soled shoes, as well as long pants are required. Tank tops and sleeveless shirts are not permitted.



KGHM Ajax Mining Inc.

Published by Kyla Walker [?] · July 7 at 8:30am · 🌐

We are again hosting site tours.

Click on the link to RSVP: <http://www.ajaxmine.ca/site-tours>

Tours will run every Thursday at 1 p.m. and Saturday at 10 a.m.

Participants will enjoy a tour of the site with a knowledgeable guide and will learn about the site's long mining history and KGHM International's plans for the Ajax Project.

Ajax Project - KGHM International - Site Tours

KGHM International is again hosting Ajax Project site tours. Tours will run every Thursday at 1 p.m. and Saturday at 10 a.m., conditions permitting. Participants will enjoy a tour of the site with a knowledgeable guide and will learn about the site's long mining history and KGHM International's plan...

AJAXMINE.CA

Record of Site Tours 2014

Date - 2014	No. of Attendees
July 24th	
July 26th	10
July 31st	1
August 2nd	
August 7th	4
August 9th	1
August 14th	10
August 16th	9
August 21st	5
August 23rd	
August 28th	15
Sept 4th	9
Sept 6th	
Sept 11th	17
Sept 13th	4
Sept 18th	17
Sept 20th	5
Sept 25th	5
Sept 27th	
October 2nd	18
October 4th	15
October 9th	
October 11th	3
Date - 2015	No. of Attendees
June 27th	10
July 9th	16
July 23rd	
July 25th	
August 13th	

Other Site Tours

2014

June – 25, 27

July – 9, 11, 16, 18

Total Participants: 372

2015

June – 25, 27

July – 9, 11, 23, 25

Total Participants: 210