

Appendix 3-C

Project Posters

HARPER CREEK PROJECT

**Application for an Environmental Assessment Certificate /
Environmental Impact Statement**

Appendix 3-C(a)

*Posters displayed at June 1, 2011 Draft AIR Open House and
December 6, 2011 SFN Open House*

HARPER CREEK PROJECT

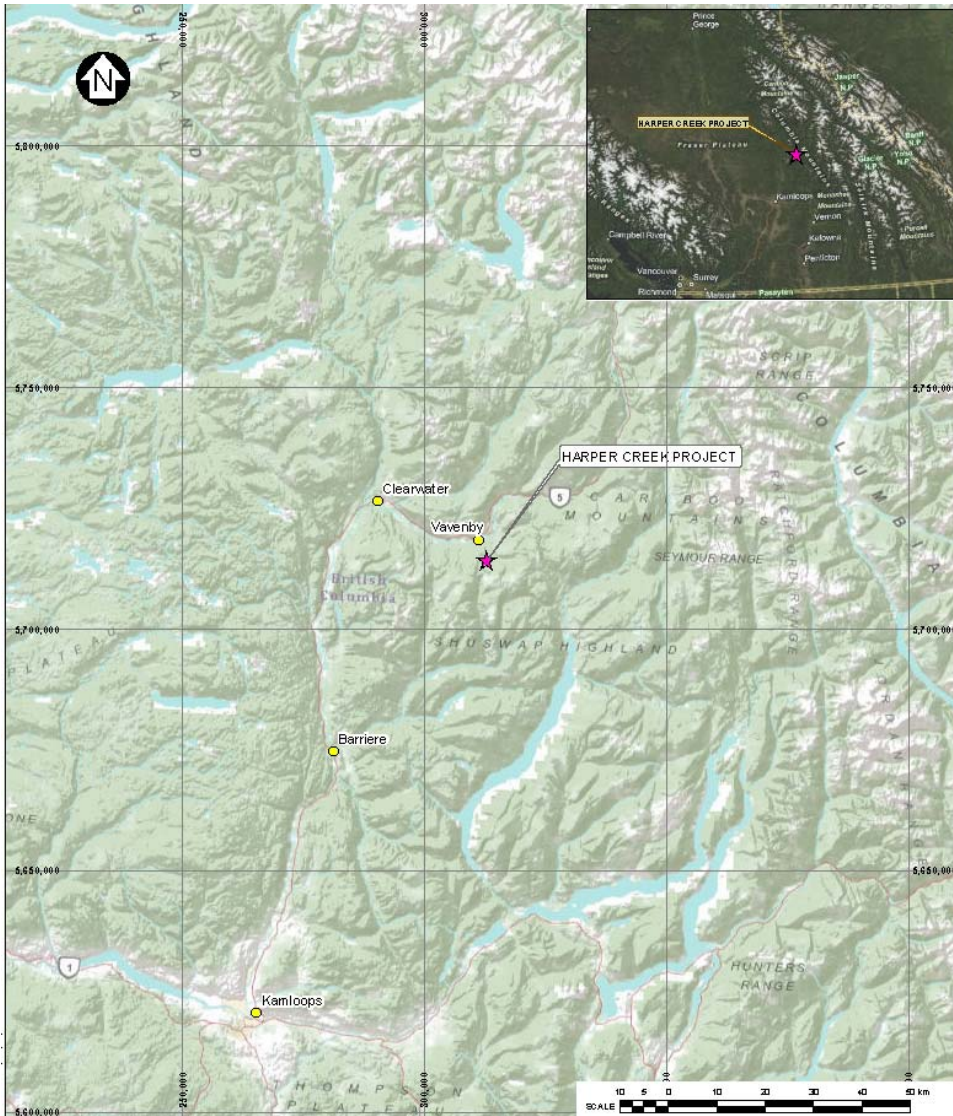
**Application for an Environmental Assessment Certificate /
Environmental Impact Statement**



**YELLOWHEAD
MINING INC.**



The Harper Creek Copper-Gold-Silver Project

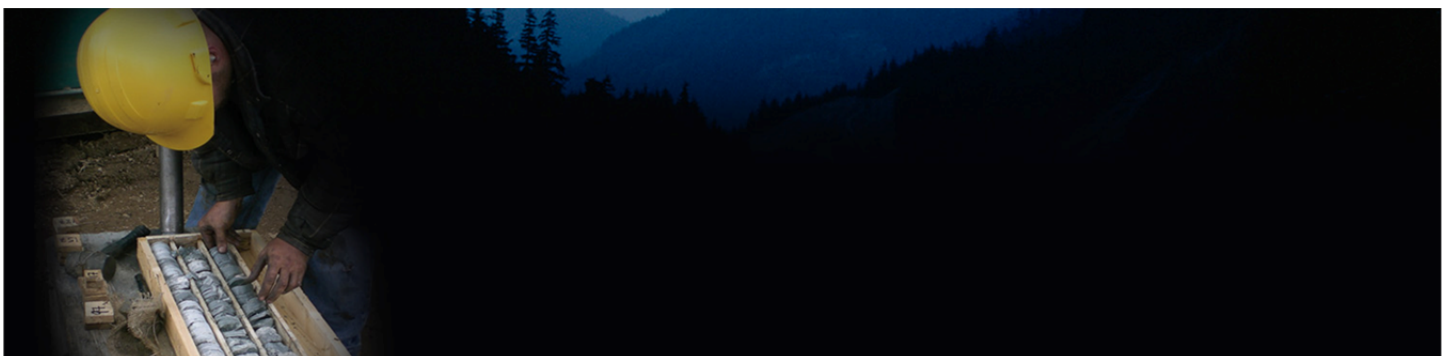


The Harper Creek Copper-Gold-Silver Project is located 150 km north-east of Kamloops in south-central BC.

It is adjacent to the Yellowhead Highway, the Canadian National Railway transcontinental mainline, BC Hydro transmission lines, the North Thompson River and the towns of Vavenby & Clearwater.

The Harper Creek Project is the principal asset of Yellowhead Mining Inc.

Yellowhead Mining Inc. propose to develop this deposit into a world-class open pit mining operation for approximately 20 years at a daily throughput of 70,000 tonnes per day.



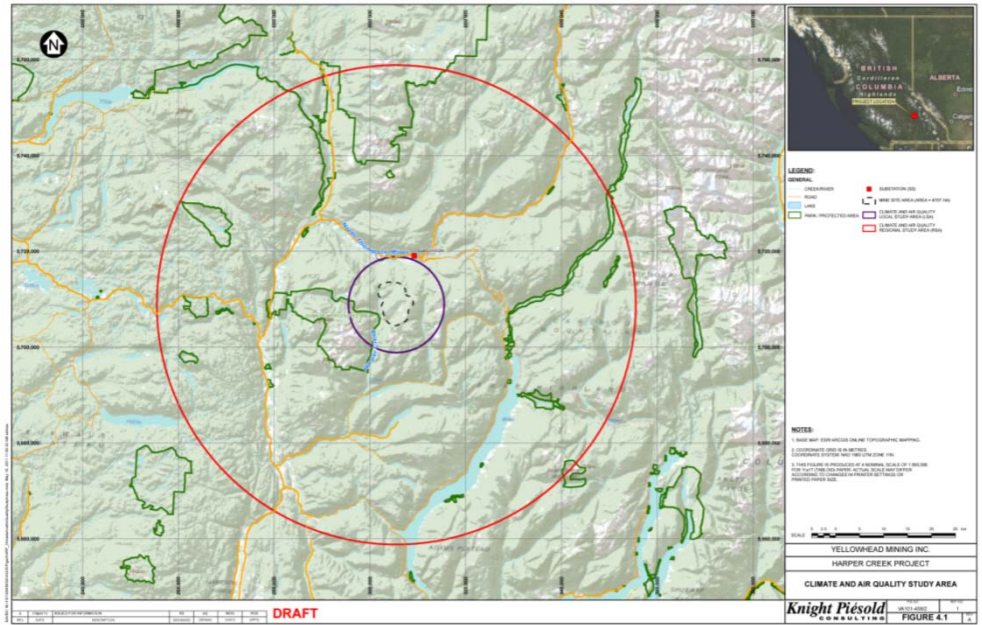


YELLOWHEAD MINING INC.



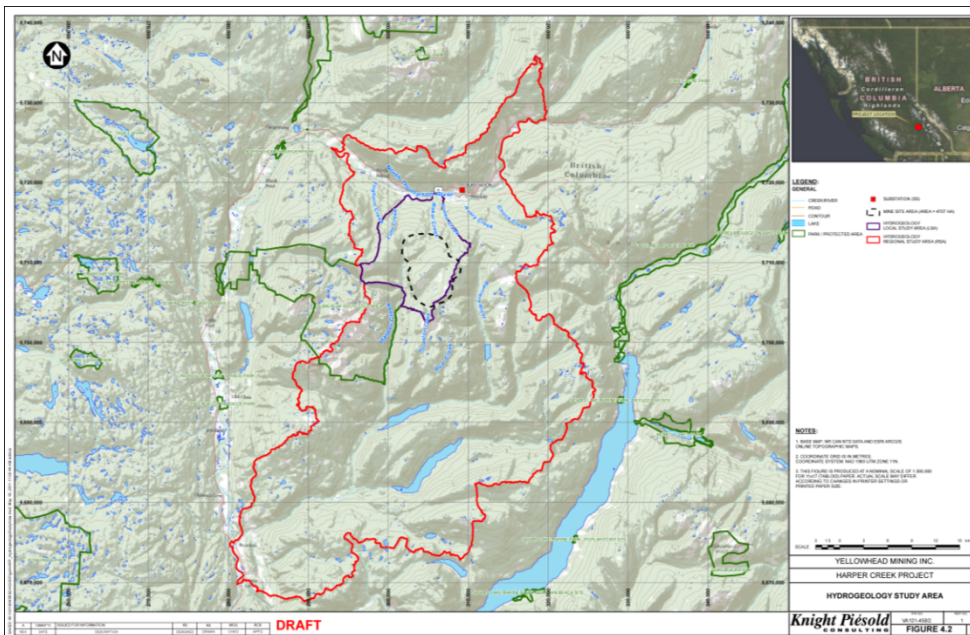
Climate and Air Quality Study Area

- The Local Study Area is based on a 10 km radius area centered on the Mines Site.
- The Regional Study Area is based on a 50 km area centered on the Mines Site.



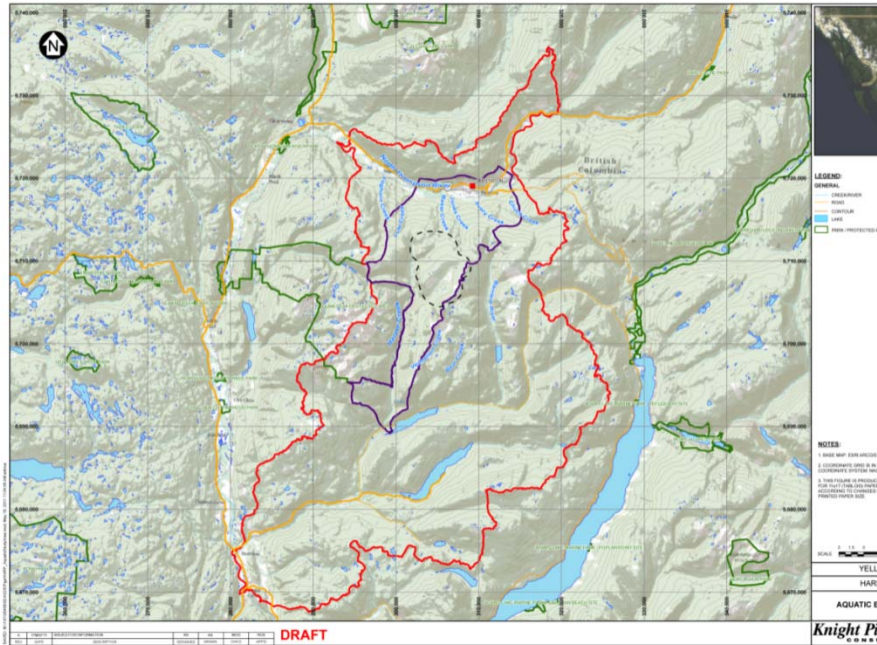
Hydrogeology Study Area

- The Local Study Area is based on the catchment boundaries of upper Harper Creek, Lute Creek, Baker Creek & Jones Creek.
- The Regional Study Area is the Barriere River watershed and a portion of the North Thompson River valley near Vavenby.





**YELLOWHEAD
MINING INC.**

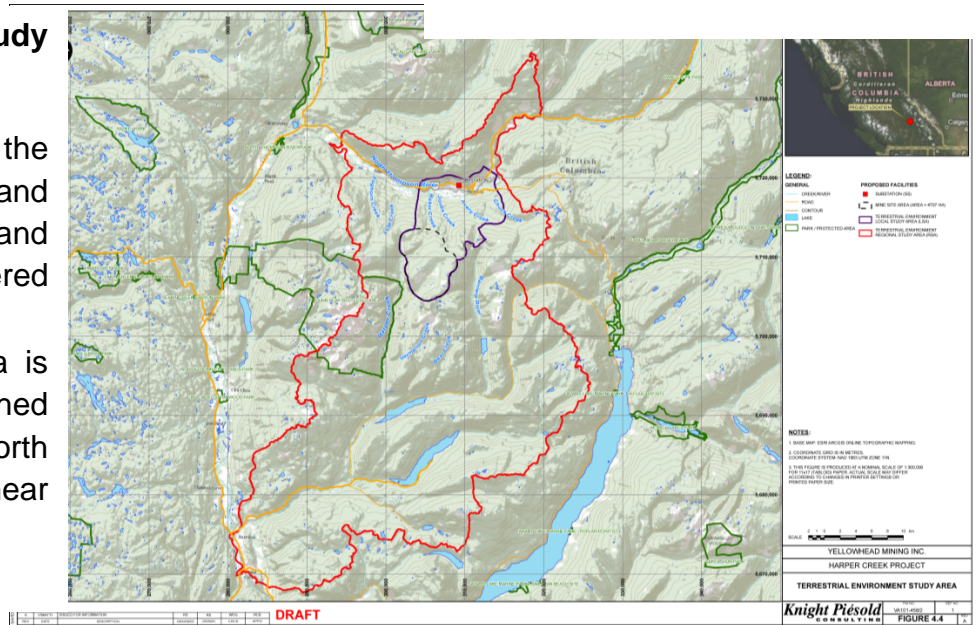


Aquatic Environment Study Area

- The Local Study Area is based on the catchment boundaries of Harper Creek, Lute Creek, Baker Creek, Jones Creek, Avery Creek & lower Chuck Creek and incorporates a section of the North Thompson River and its adjacent north slope.
- The Regional Study Area is the Barriere River watershed and a portion of the North Thompson River valley near Vavenby.

Terrestrial Environment Study Area

- The Local Study Area is the mine site infrastructure and potential access roads and off-site infrastructure buffered by 1 km.
- The Regional Study Area is the Barriere River watershed and a portion of the North Thompson River valley near Vavenby.



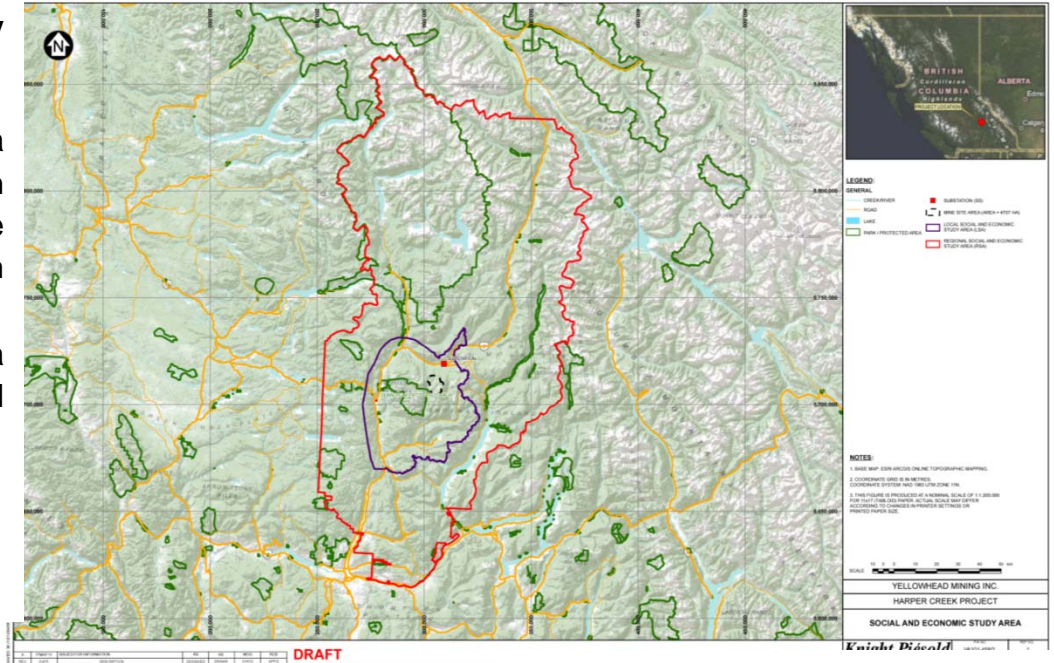


**YELLOWHEAD
MINING INC.**



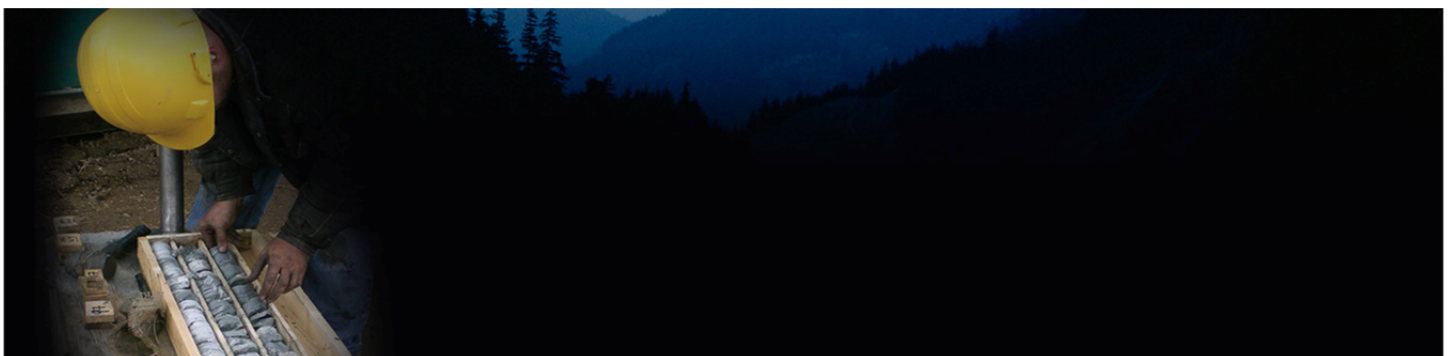
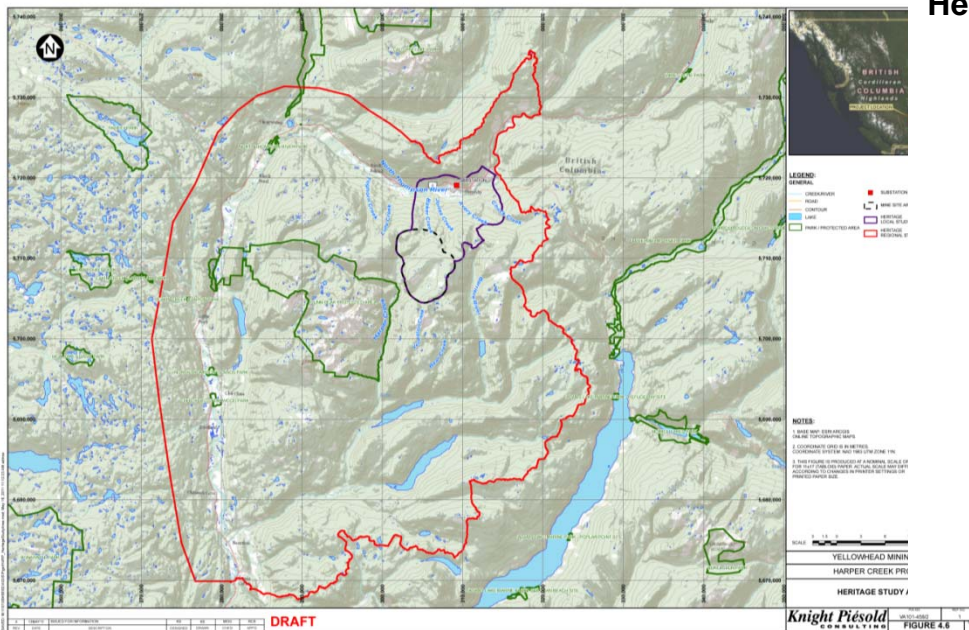
Social and Economic Study Area

- The Local Study Area incorporates the North Thompson and Barriere River valleys from Barriere to Vavenby.
- The Regional Study Area is based on Electoral Areas A, B, O, and P.



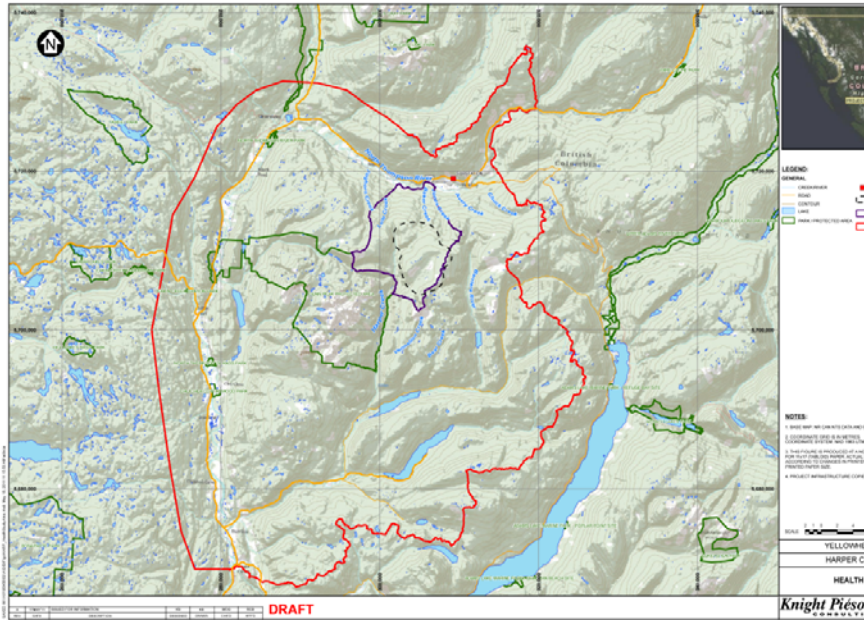
Heritage Study Area

- The Local Study Area is based on the mine site infrastructure and potential access roads and off-site infrastructure buffered by 1 km.
- The Regional Study Area incorporates the North Thompson and Barriere River valleys from Barriere to Vavenby.





**YELLOWHEAD
MINING INC.**

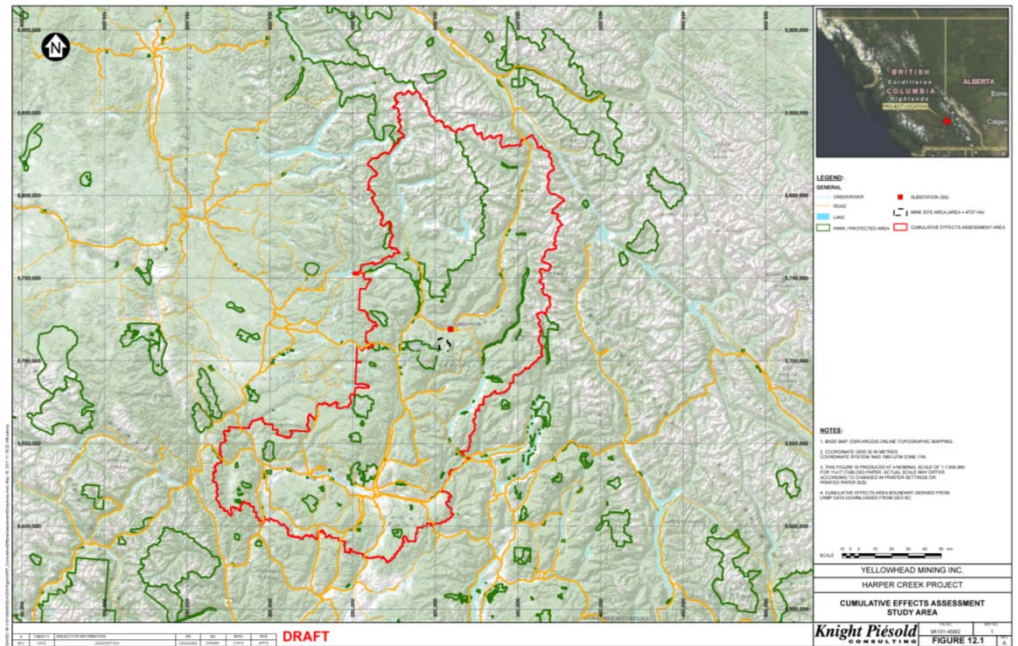


Health Study Area

- The Local Study Area is based on the catchment boundaries of upper Harper Creek, Lute Creek, Baker Creek and Jones Creek.
- The Regional Study Area incorporates the North Thompson and Barriere River valleys from Barriere to Vavenby.

Cumulative Effects Study Area

- The Study Area for the Cumulative Effects of this project with other foreseeable projects is the Kamloops Land and Resource Management Plan boundary.



Appendix 3-C(b)

*Posters displayed at September 13, 2012 Open House in
Clearwater, BC*

HARPER CREEK PROJECT

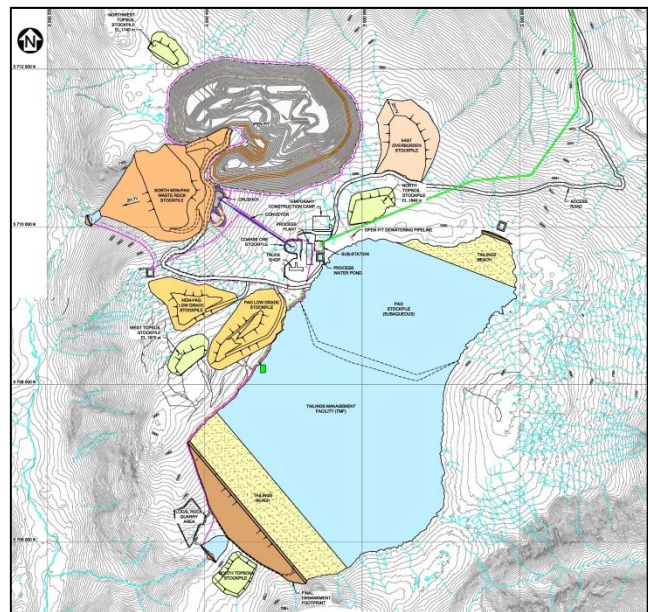
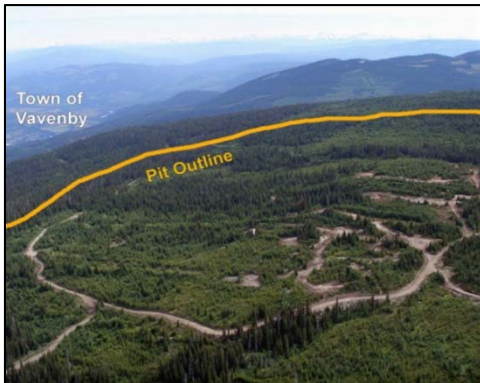
**Application for an Environmental Assessment Certificate /
Environmental Impact Statement**



YELLOWHEAD
MINING INC.

PROJECT OVERVIEW AND MINE SITE LAYOUT

- **BC Jobs Plan: 8 new mines by 2015; Harper Creek is one**
- Harper Creek is 100% - owned by Yellowhead
- Proposed open pit copper-gold-silver mine 150 km northeast by road from Kamloops
- 3,500 ha Mine Site Area located 10 km southwest of Vavenby
- 28 year mine life with a process plant throughput of 70,000 tonnes/day
- Open pit, plant site, tailings management facility
- 138 kV powerline from the Plant Site to BC Hydro Grid near Vavenby
- Rail loadout facility and office at old Weyerhaeuser mill site
- Two primary access roads will be used during operations Vavenby Mountain and Saskum Plateau Forest Service Roads

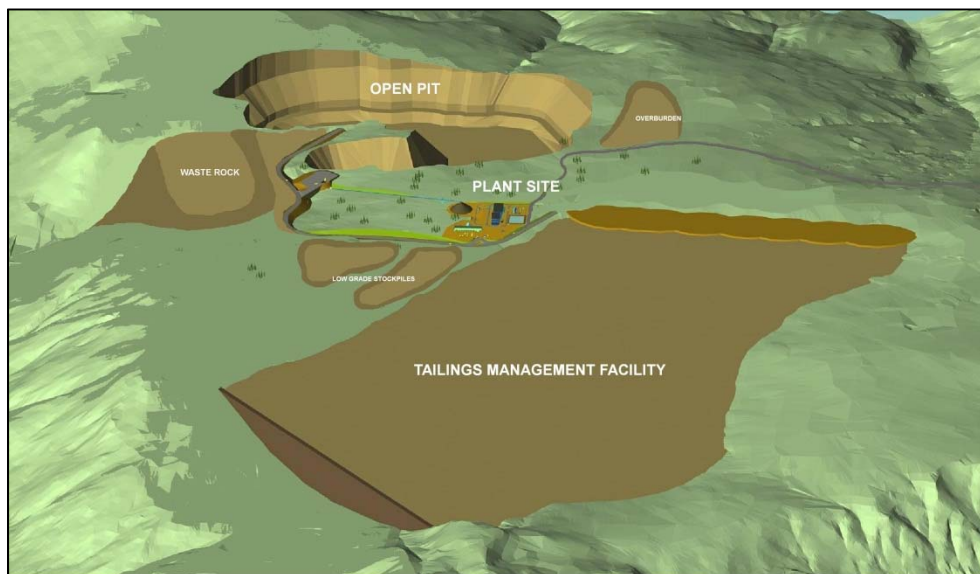




YELLOWHEAD
MINING INC.

WASTE ROCK AND WATER MANAGEMENT

- The design of an efficient waste rock and water management system is integral to constructing an economic mining operation
- Engineered structures are designed in consideration of the amount of water on the site
- The Open Pit, Stockpiles (Waste Rock, Low-Grade Ore, and Overburden), and Tailings Management Facility are designed to contain and manage contact runoff throughout operations and closure to protect the receiving environment
- Surface or groundwater released to the receiving environment is required to meet acceptable criteria to protect aquatic life and drinking water

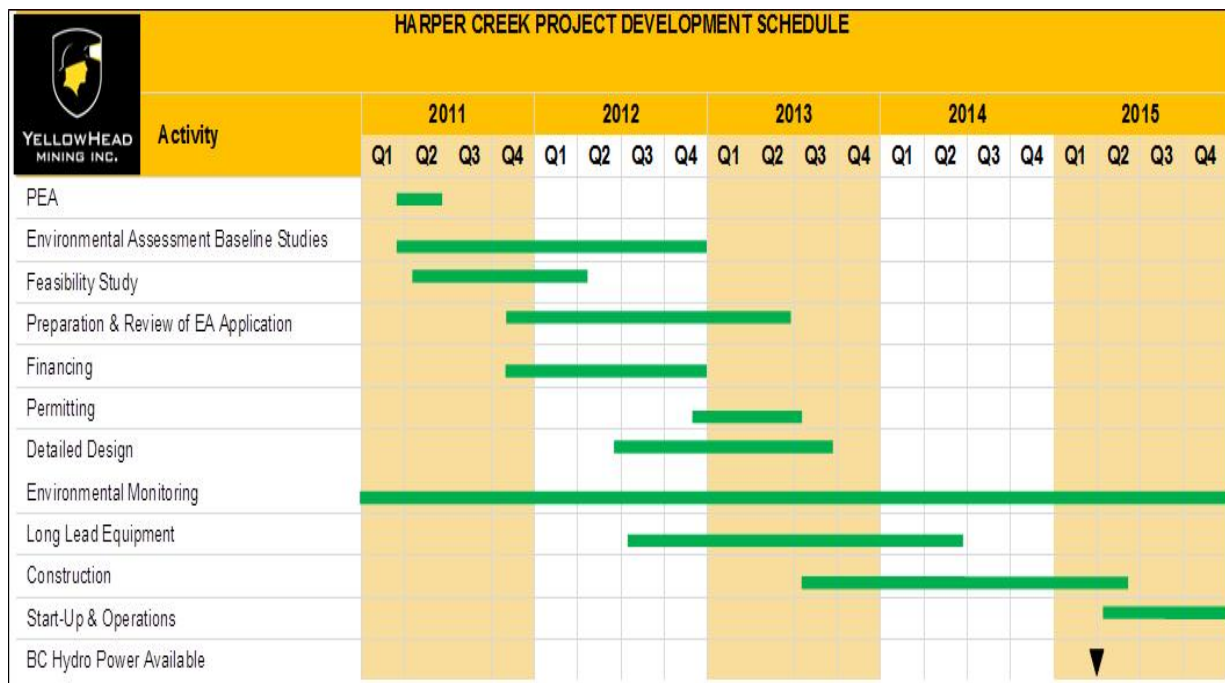




YELLOWHEAD
MINING INC.

PROJECT DEVELOPMENT TIMING

- Engineering Feasibility Study completed March 2012
- In a harmonized environmental review process with EAO and CEAA
- EA Application submission scheduled for Fall 2012
- EAO Application review period is 7 months, EA Certification July 2013 followed by Mines Act permitting
- Construction start date planned for third quarter 2013





YELLOWHEAD
MINING INC.

PROJECT JOBS AND ECONOMICS

Economics* Direct Tax Impacts

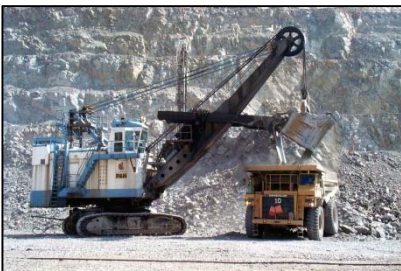
- Capital Cost CND \$839 Million, greater than 50% Canadian-sourced
 - Operating Cost CND \$6.4 Billion (estimates over LOM 28 years)
 - Total Taxes CND \$1.24 Billion, (Federal CND \$403 Million, Provincial \$348 Million, BC Mining Tax \$488 Million – all based on US\$2.50/lb CU)
 - Estimated personal income taxes of CND \$278 Million on labour costs (LOM)
- (* Estimates Based on Base Case scenario in Feasibility Study Released March 2012)

Workforce YMI intends to hire as many local people as possible

- Short-term: Up to **600 construction** jobs at peak
- Long-term: **430 direct operations** jobs
- ~810 to 1,215 Indirect jobs in BC (2x - 3x multiplier)

Contracting Opportunities

- Surveying, road construction and maintenance, logging, concrete supply and construction, earthworks, drilling and blasting, catering and housekeeping, casual labour, concentrate haulage, fuel supply (gasoline, propane, diesel), food and catering supplies, stationery and office supplies, satellite and cellular communications, environmental monitoring

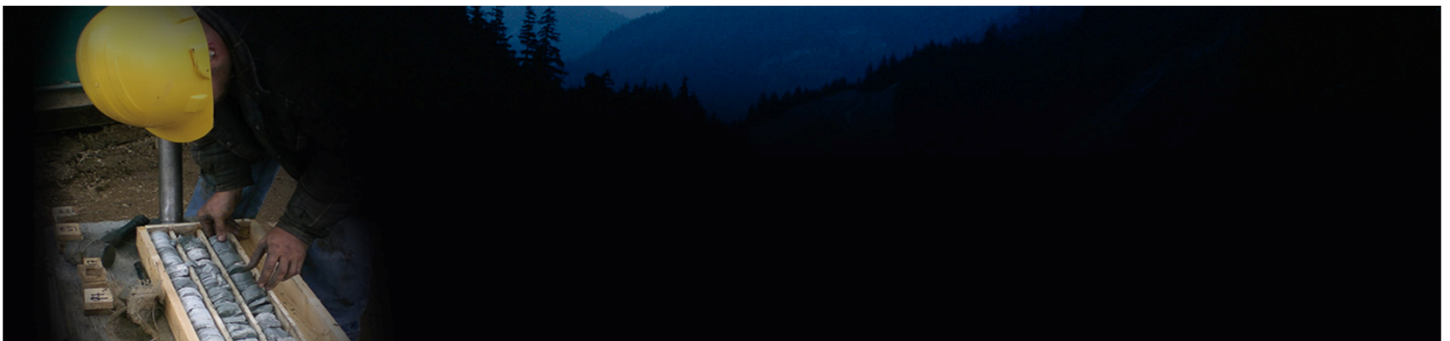
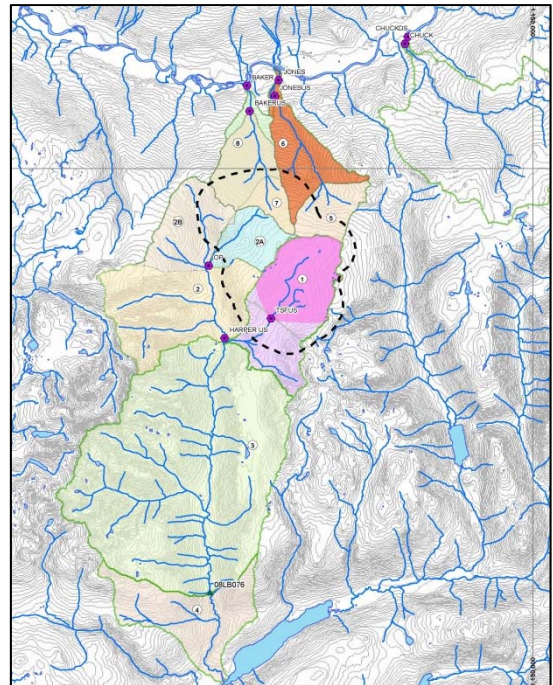
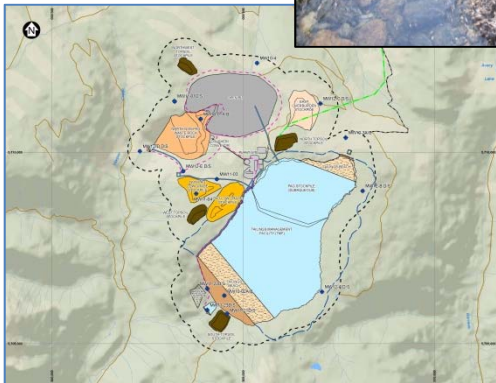




YELLOWHEAD
MINING INC.

HYDROLOGY AND HYDROGEOLOGY

- Seven hydrology stations have been established for the Project area on six different streams
- Weekly sampling was completed for the 2011 and 2012 freshet seasons
- Monthly sampling has continued throughout the year in order to develop a competent rating curve for each station
- Winter measurements completed to characterize the low flow under ice and snow conditions
- 17 groundwater monitoring wells at 10 locations in the Mine Site Area
- Additional 10 groundwater monitoring wells at 5 locations installed during summer 2012

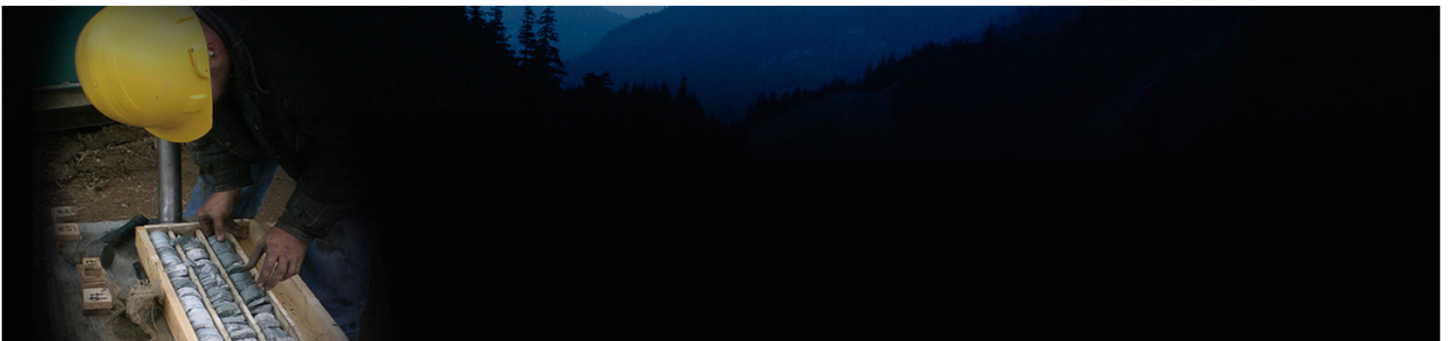
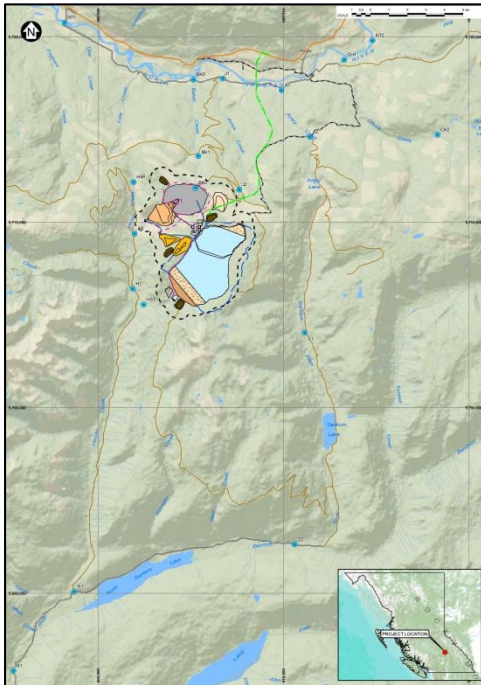




YELLOWHEAD
MINING INC.

SURFACE AND GROUND WATER QUALITY

- Surface water quality sampling initiated in 2007 with 550 samples collected to date, from 18 sties
- Exceedances of aquatic life criteria (Al, Cu, As, Cd, and Fe) in surface water quality samples from Harper Creek and Baker Creek
- Monthly and freshet surface water quality sampling ongoing in 2012
- Five rounds of groundwater sampling completed (Sept 2011, Nov 2011, March 2012, June 2012, Sept 2012)
- Exceedances of aquatic life criteria (As, Co, Fe, Zn) in groundwater water quality samples from the proposed Open Pit area
- Exceedances of aquatic life criteria (Al, Cd, Cr, Cu, Se, U, V, Zn) in groundwater water quality samples down gradient from the Tailings Management Facility

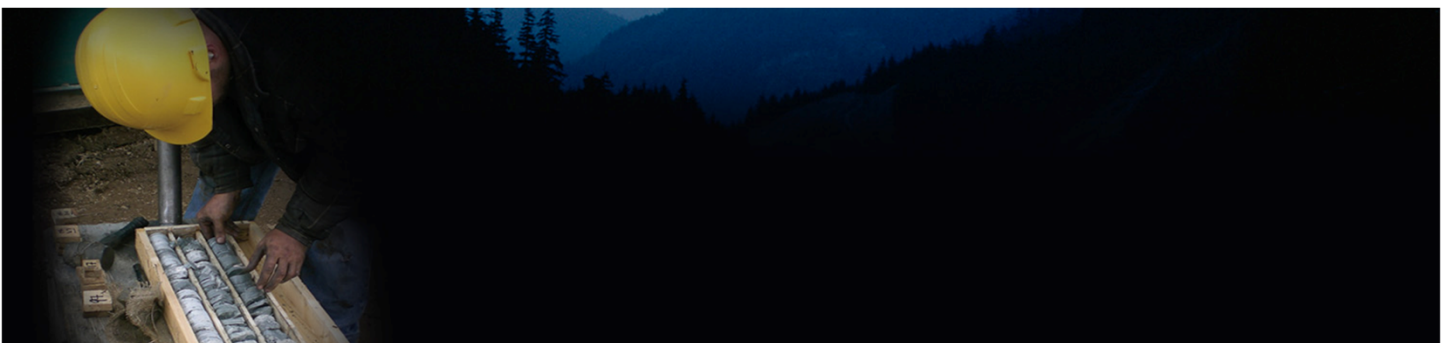
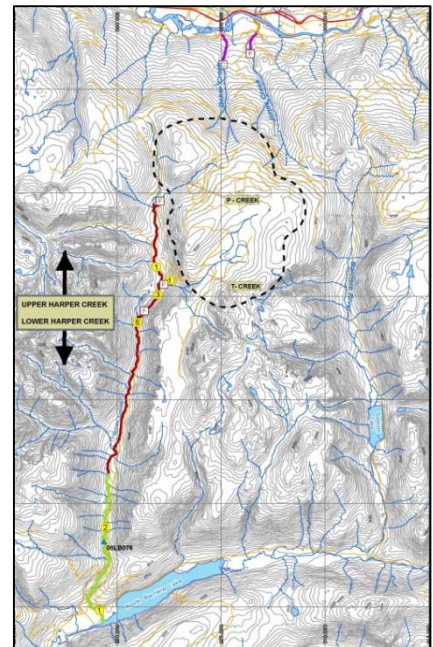




YELLOWHEAD
MINING INC.

FISH AND AQUATIC HABITAT

- Mine Site Area confirmed as fishless
- Several fish species distributed to mainstem km 9.5 of Harper Creek
- Bull trout distributed to mainstem km 24.5 of Harper Creek
- Bull trout present in the lower 280 m of T Creek and lower 380 m of P Creek
- Falls located at mainstem km 18.5 of Harper Creek are passable by some large bull trout but appear to limit upstream spawning migration
- Resident rainbow trout present in the lower 1.8 km of Baker Creek
- YMI will be working with DFO/MOE and First Nations on Fish Habitat Compensation Options





YELLOWHEAD
MINING INC.

WILDLIFE AND VEGETATION

- Efforts were made to collect information on potential red and blue listed species
- Amphibian surveys performed throughout study area in 2008, 2011:
 - Breeding surveys at wetlands, Road surveys for amphibian migrations
- Songbird surveys conducted along roads in study area in 2008, 2011
- Call-playback surveys conducted in/near suitable habitat:
 - Boreal Owl surveys, Western Screech-owl surveys Northern Goshawk surveys, Common Nighthawk surveys
- Riverine surveys for Harlequin Ducks
- Acoustic bat surveys conducted in 2011, 2012; Bat capture surveys conducted in 2012
- Winter track surveys conducted in 2008, 2011
- Invertebrate surveys, focused on butterflies and dragonflies, in 2011
- Rare plant surveys conducted in 2011, 2012
- 349 plots were conducted; Ecosystem (TEM) mapping and wildlife habitat truthing
- 3 Total observation (1 grizzly track, 2 caribou tracks); No grizzly dens found within mine footprint; due to past logging and existing roads potential caribou habitat is fragmented
- Generally, the greatest diversity is found at lower elevations outside of mine site footprint





**YELLOWHEAD
MINING INC.**

ARCHAEOLOGY

- First Nations (Simpw and Adams Lake) have been involved in the collection of baseline information
- Simpwc completed a Traditional Use Study of the Mine site area
- Simpwc/Terra are leading the archaeological impact assessment on site with the involvement of Adams Lake Indian Band
- Archaeological Impact Assessment (AIA) fieldwork was conducted Summer/Fall 2011 and 2012
- AIA completed on 2235 ha to date, 100% pedestrian survey, 200 ha remaining
- Drill pads and access roads were also assessed to the Mine Site Area
- Two archaeological sites identified to date
- Next Steps: AIA Final Report and Management Recommendations will be completed during Fall 2012 and incorporated to the Environmental Assessment Application

