

Appendix 3-D

YMI Presentations

HARPER CREEK PROJECT

**Application for an Environmental Assessment Certificate /
Environmental Impact Statement**

Appendix 3-D(a)

YMI Presentation at the June 1, 2011 Draft AIR Open House

HARPER CREEK MINE PROJECT

**Application for an Environmental Assessment Certificate /
Environmental Impact Statement**



**YELLOWHEAD
MINING INC.**

YELLOWHEAD MINING INC.

EAO Open House

June 1, 2011

Clearwater, BC



MANAGEMENT OF YELLOWHEAD MINING INC. (YMI)

**YELLOWHEAD
MINING INC.**

Ian Smith, Mining Engineer: CEO

- ❖ **40+ years of experience in corporate, operations, and project management and consulting within the international base, precious metals and coal industries.**
- ❖ **Involvement with other large scale copper projects at a senior management level including Bougainville Copper, Mexicana de Cobre, Fluor in China, Zambian copper belt, bcMetals (Red Chris project).**

Ronald L. Handford, P.Eng., BAsC, MBA: Executive Vice President, Corporate Development

- ❖ **35+ years of international experience in development and finance relating to resources and technology.**
- ❖ **Prior to 1996 was an investment officer with International Finance Corporation and resource industry banker with Barclays Bank.**

Robert L. J. Harper, BA, MBA: Chief Financial Officer

- ❖ **30+ years experience in corporate finance, financial advisory and the resource banking industry.**
- ❖ **Has been an advisor to or officer of both private and public companies.**

Alastair Tiver, P.Eng.: Vice President, Operations

- ❖ **24+ years international experience in operating roles ranging from exploration stage to large scale operating mines in a variety of commodities – most recently Chief Engineer of Copper Mountain Mining Corp.**

Charlene Higgins, MSc, PhD: Vice President Environment and Community & First Nations Relations

- ❖ **14+ years as a senior negotiator and policy advisor working with Aboriginal communities and organizations.**
- ❖ **Expertise in the areas of sustainable use and management of natural resources, multi-stakeholder engagement.**



FEASIBILITY AND ENVIRONMENTAL ASSESSMENT PARTICIPANTS

**YELLOWHEAD
MINING INC.**



Adams Lake



Little Shuswap



SIMPCO FIRST NATION
People of the North Thompson River



**YELLOWHEAD
MINING INC.**



**British Columbia
Environmental Assessment
Agency**

Canada

**Canadian Environmental
Assessment Agency**

Feasibility Study & Environmental Assessment Team Members



Laurion

Hinz / Rockwell

Nilsson Mine Services

GeoSim Services



Keystone Wildlife

Dillon

Terra Archaeology

Laurie McNeil & Associates

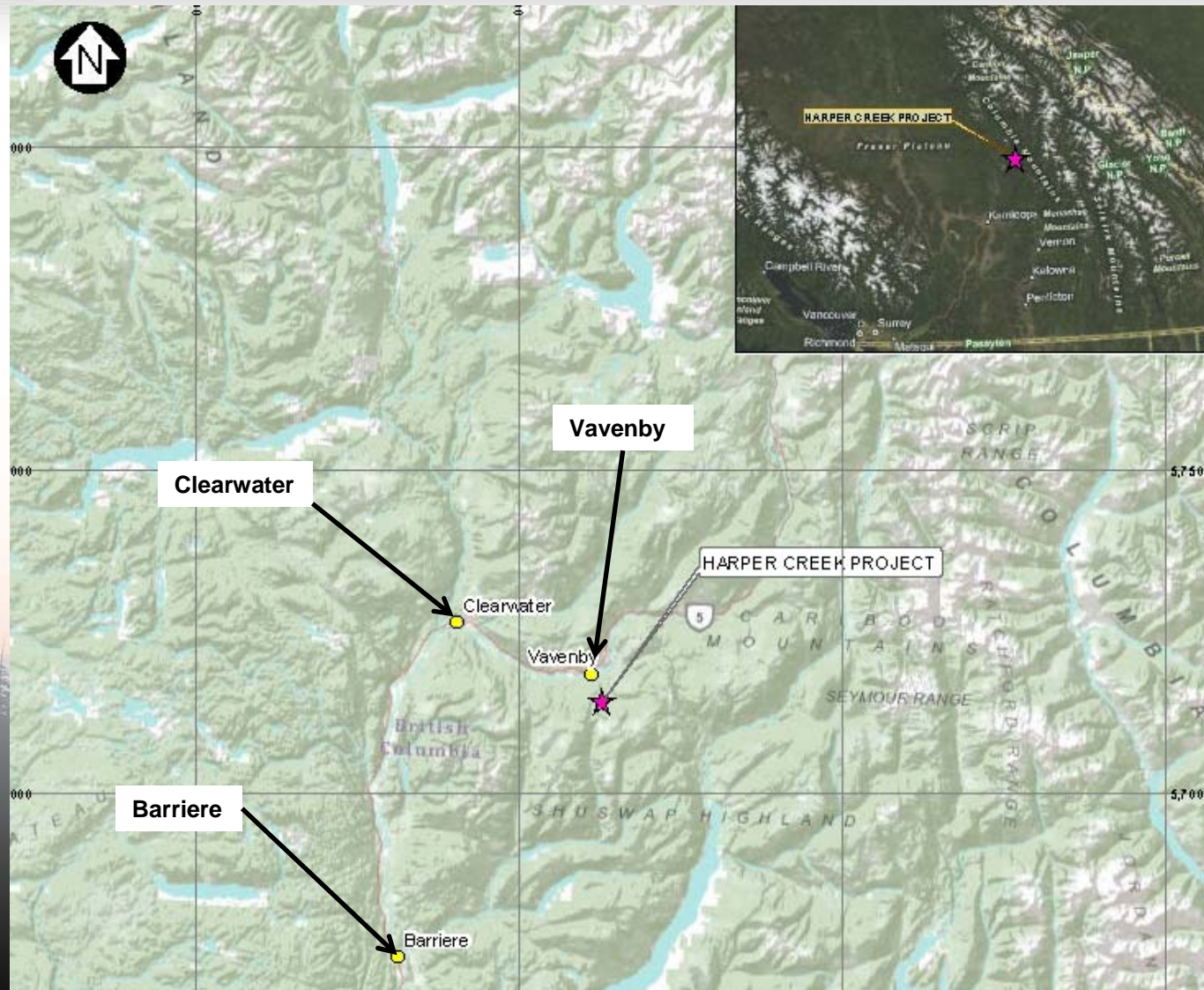
Lawrence Consulting





HARPER CREEK PROJECT - LOCATION

**YELLOWHEAD
MINING INC.**





HARPER CREEK PROJECT HISTORY

**YELLOWHEAD
MINING INC.**



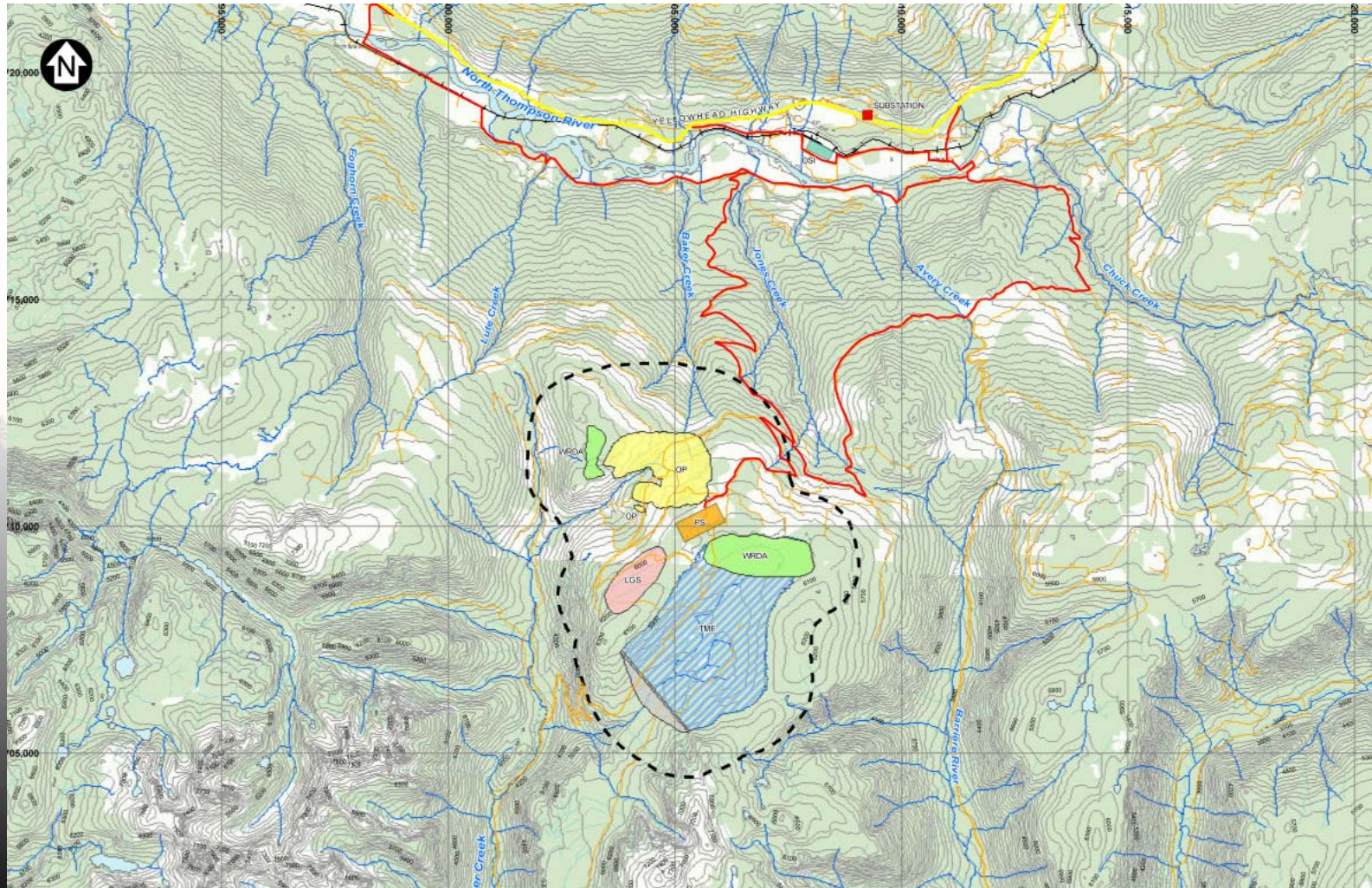
About 75% of 28,682m in 169 holes of historical core has been recovered from site

- **1966 – 1971:** Discovery/exploration by Noranda, US Steel
- **1971 – 1974:** Noranda/US Steel JV
- **1981:** Joint Venture dissolved
- **1996:** American Comstock drilled 2,847m in 8 holes
- **2005:** Yellowhead Mining formed and acquired project claims
- **2006 – 2011:** Yellowhead drilled ~34,000 metres in 85 holes, conducted studies / testwork (scoping, geological, metallurgical, baseline environmental)
- **2008 – 2011:** Section 10 & 11 Orders from EAO
- **March 2011:** NI43-101 Preliminary Economic Assessment
- **April 2011:** Commenced Feasibility Study



HARPER CREEK PROJECT – ACCESS ROUTES

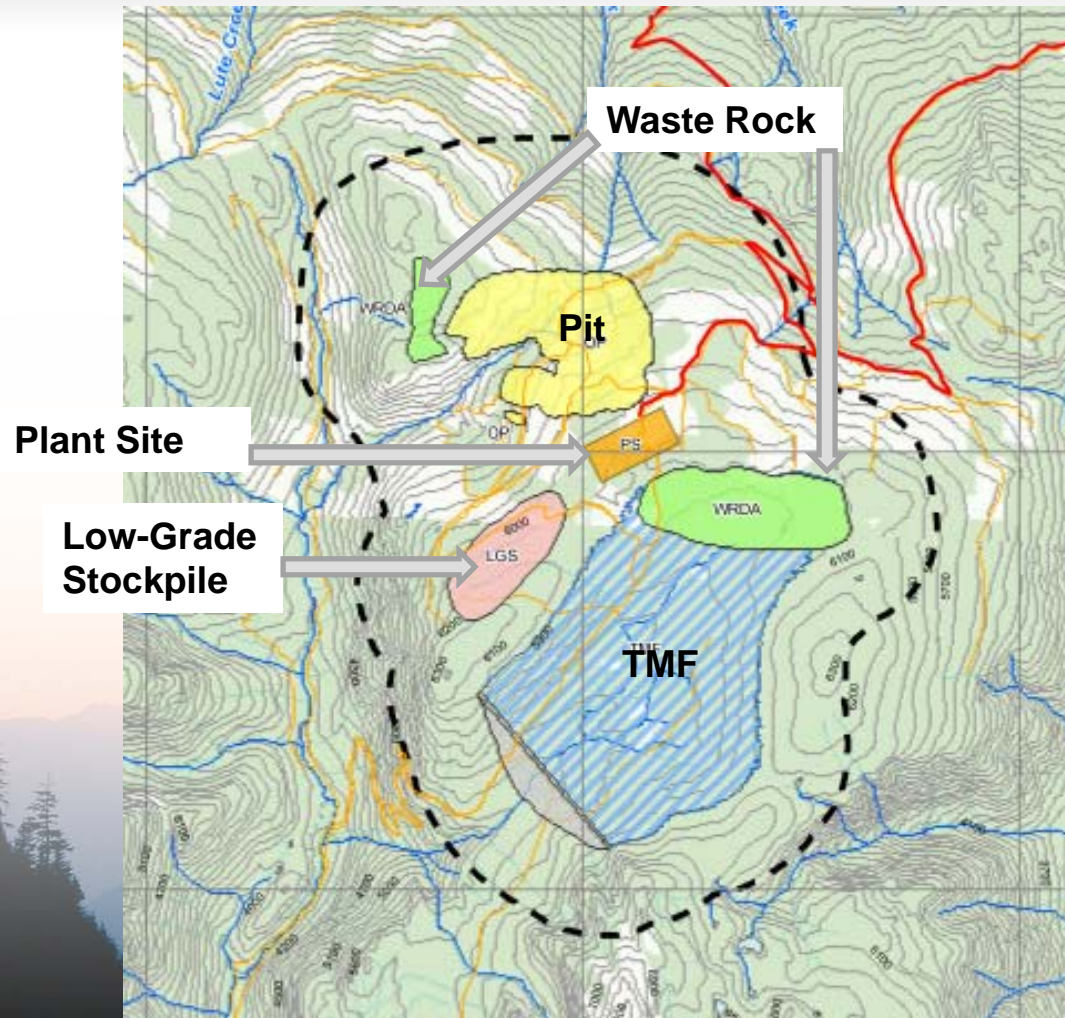
**YELLOWHEAD
MINING INC.**





HARPER CREEK PROJECT – GENERAL ARRANGEMENT

**YELLOWHEAD
MINING INC.**





HARPER CREEK PROJECT - OVERVIEW

YELLOWHEAD
MINING INC.

- 22 year mine life
- Milling rate 70,000 tonnes/day
- Low Stripping Ratio (0.9:1) Life-of-mine (LOM)
- LOM Copper Production - 2.8 billion lbs
- LOM Gold – 265,000 oz
- Silver - 4.8 million oz
- Adjacent Rail Loadout and Power at Vavenby
- Local community workforce located nearby in Vavenby, Clearwater, Barriere and Blue River
- Capital Cost CDN\$759 million



HARPER CREEK PROJECT – FIRST NATIONS

YELLOWHEAD
MINING INC.

The Project lies within the asserted traditional territories of the Simpcw First Nation, and the Adams Lake Indian Band

- YMI has a Negotiation Agreement with Simpcw

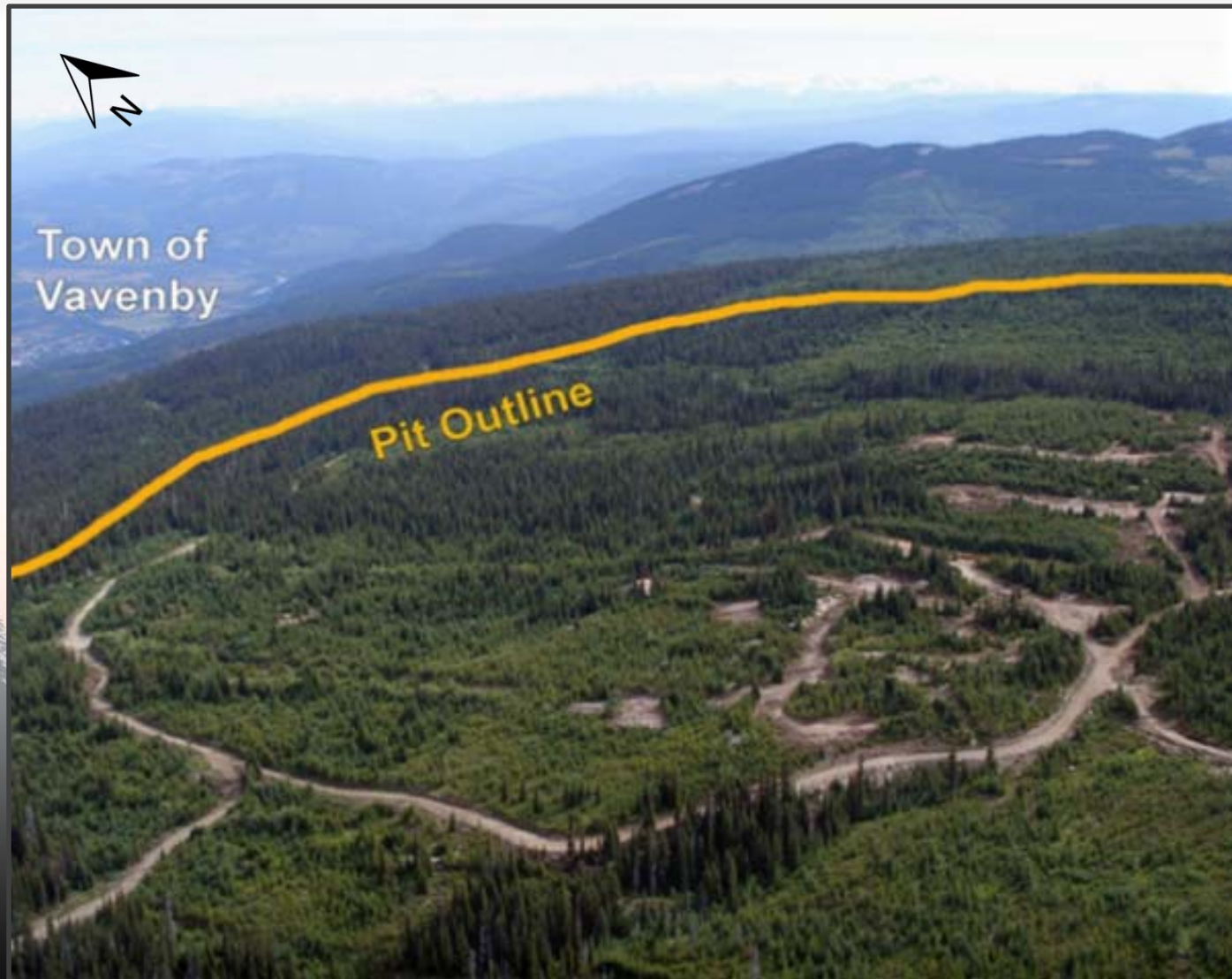
Information sharing regarding the EA Process and Baseline Studies

- Simpcw First Nation
- Adams Lake Indian Band
- Neskonalith Indian Band
- Little Shuswap Indian Band



HARPER CREEK DEPOSIT, CONCEPTUAL PIT OUTLINE

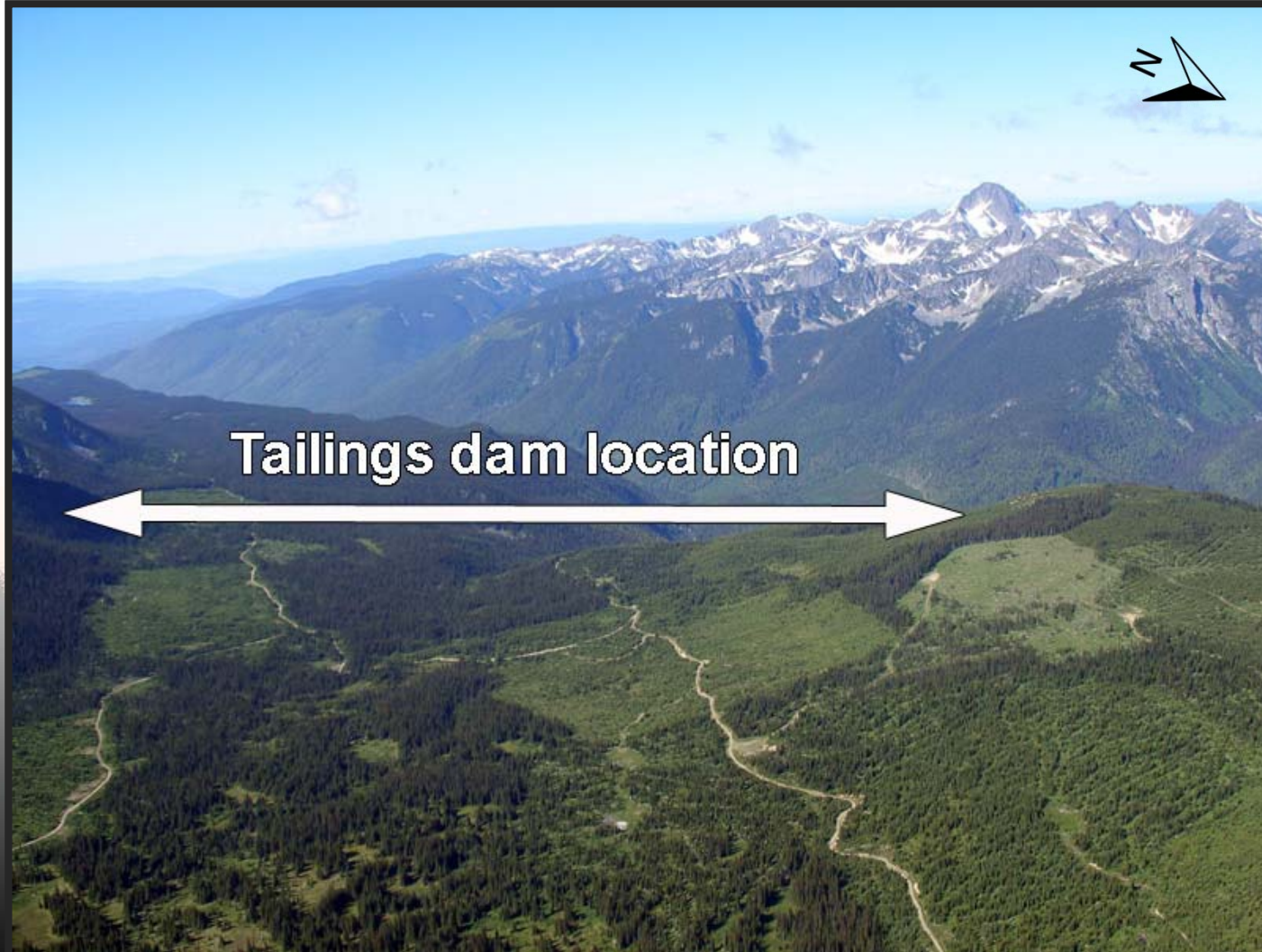
YELLOWHEAD
MINING INC.





HARPER CREEK PROJECT – TAILINGS MANAGEMENT FACILITY

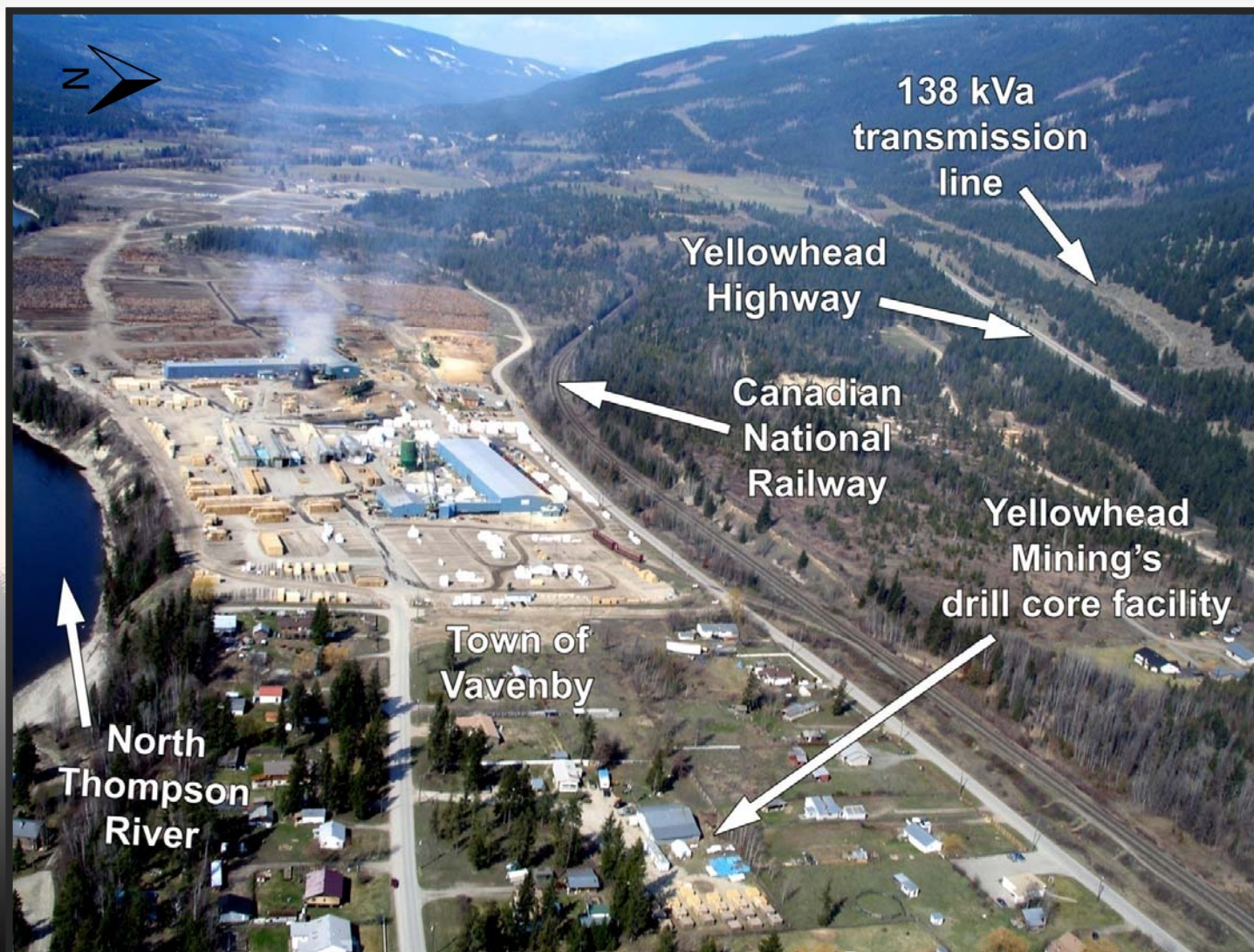
YELLOWHEAD
MINING INC.





HARPER CREEK PROJECT - ADJACENT INFRASTRUCTURE

YELLOWHEAD
MINING INC.





HARPER CREEK PROJECT – EXPLORATION CAMP

YELLOWHEAD
MINING INC.





CONSTRUCTION/OPERATIONS

– POSSIBLE CONTRACTING OPPORTUNITIES

YELLOWHEAD
MINING INC.

- Surveying
- Road construction and maintenance
- Logging
- Concrete supply and construction
- Earthworks
- Drilling and blasting
- Catering and housekeeping
- Casual labour
- Mobile equipment
- Bus Service
- Concentrate haulage
- Fuel supply (gasoline, propane, diesel)
- Food and catering supplies
- Stationery & office supplies
- Satellite and cellular communications
- Environmental monitoring
- Expediting



HARPER CREEK PROJECT - EMPLOYMENT

YELLOWHEAD
MINING INC.

Direct employment – sourced locally to the extent possible

~ up to 500 construction jobs at peak

~ 400 direct operations jobs – mine, mill, admin

~ 1,200 indirect jobs in B.C. (3x multiplier)



SOCIOECONOMIC FACTORS

YELLOWHEAD
MINING INC.

- Pre-development expenditures \$25 million – locally sourced
- Operating costs over mine life (22 years) from PEA
~\$4 billion in direct mine operating costs, a significant portion of which will be sourced locally
- Considerable mining taxes and income taxes, variable depending on metal prices



HARPER CREEK PROJECT TIMELINE

**YELLOWHEAD
MINING INC.**

2007 2008 2009 2010 2011 2012 2013 2014

Baseline Studies

PEA

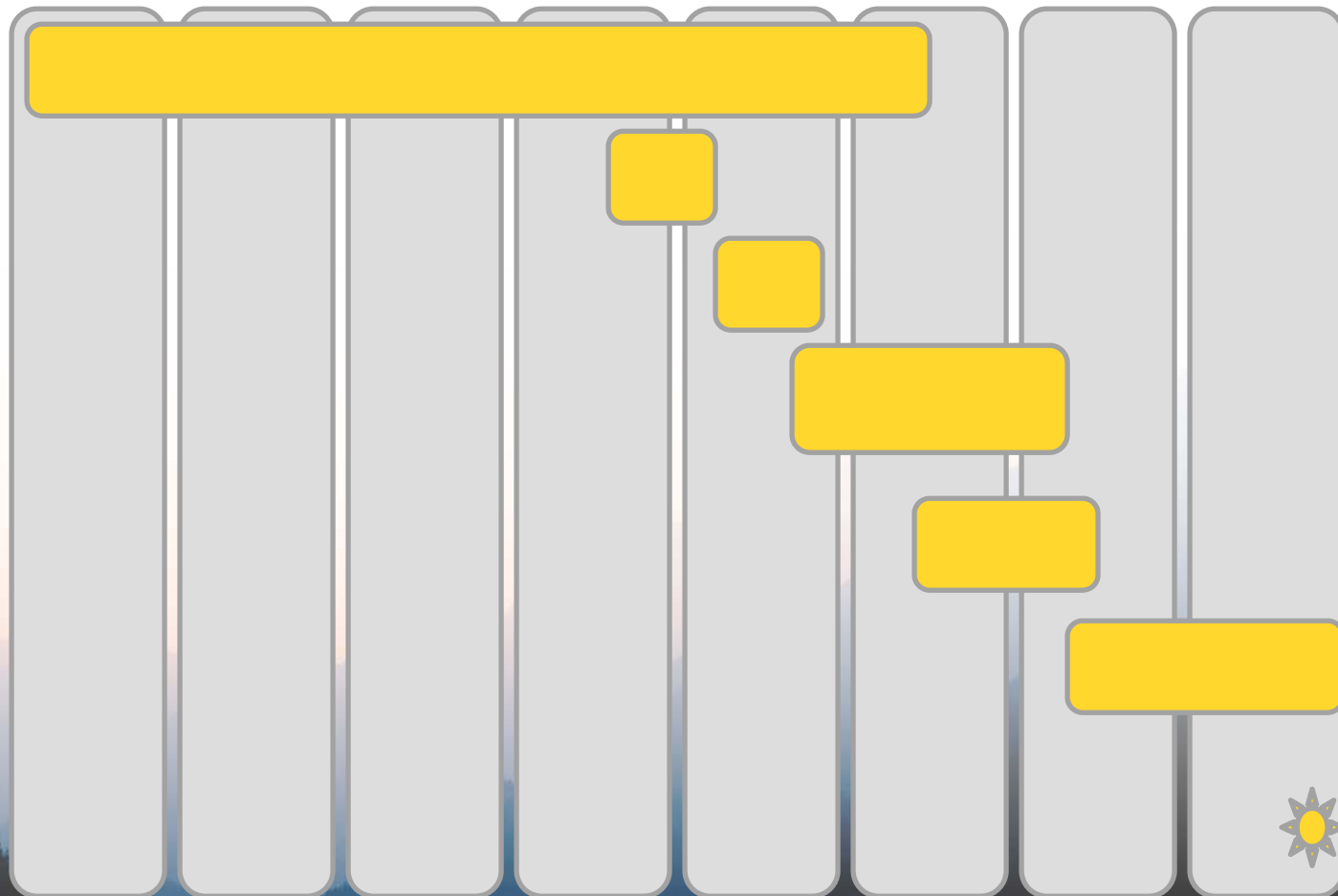
Feasibility Study

***Environmental
Assessment***

Permitting

Construction

***Operations
Commence***





END

YELLOWHEAD
MINING INC.

Questions?

Contact

Charlene Higgins, MSc, PhD: Vice President Environment,
Community & First Nations Relations

Mobile: 250-320-3387

E-mail: chiggins@yellowheadmining.com
www.yellowheadmining.com

Appendix 3-D(b)

YMI Presentation at the December 6, 2011 SFN Open House

HARPER CREEK MINE PROJECT

**Application for an Environmental Assessment Certificate /
Environmental Impact Statement**



**YELLOWHEAD
MINING INC.**

HARPER CREEK PROJECT

Simpcw Community Meeting

December 6, 2011

Chu Chua



**YELLOWHEAD
MINING INC.**

PURPOSE

Update on the Status of the Environmental Baseline Studies and Proposed Harper Creek Mine Project

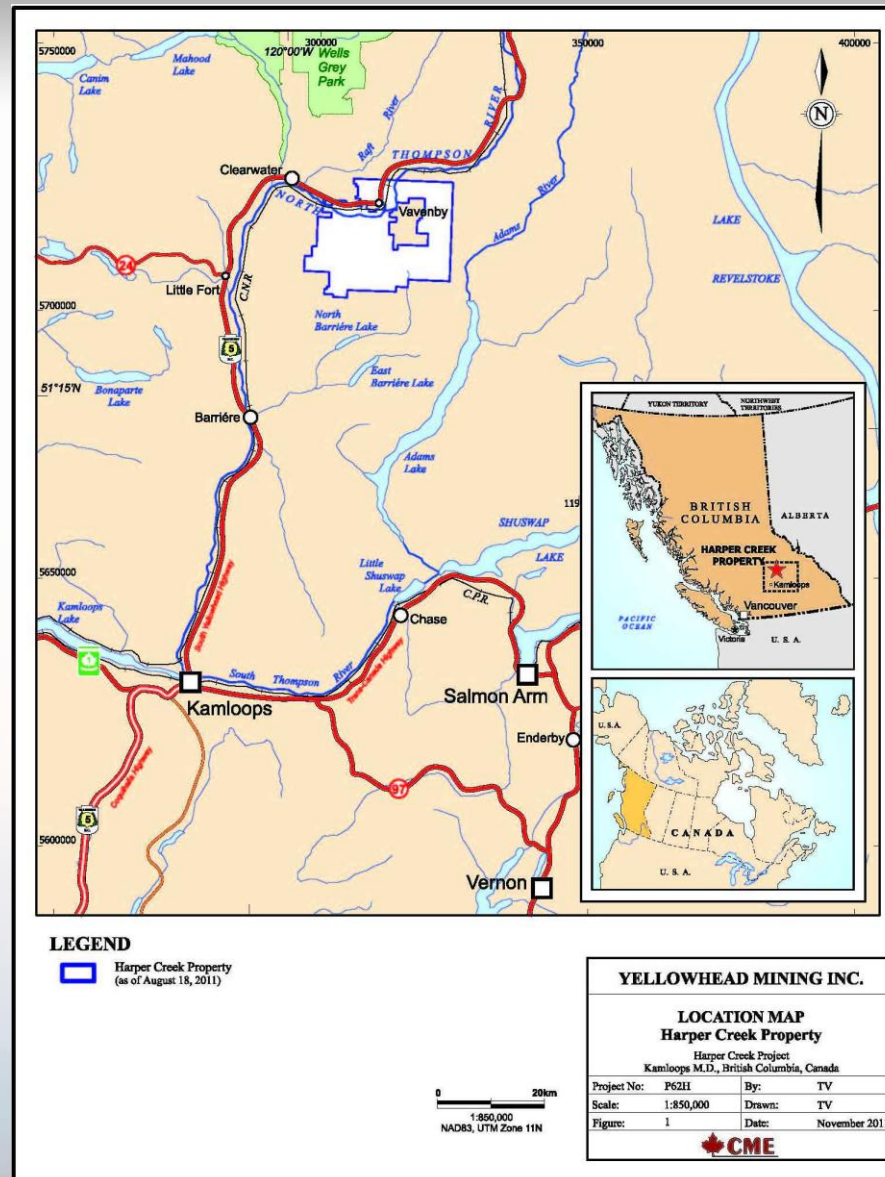


- **The Project lies within the asserted traditional territories of the Simpcw First Nation, and the Adams Lake Indian Band:**
 - **YMI has a Negotiation Agreement with Simpcw**
 - **YMI working towards a Participation Agreement with Adams Lake**
- **Information sharing regarding the EA Process and Baseline Studies:**
 - **Simpcw First Nation**
 - **Adams Lake Indian Band**
 - **Neskonlith Indian Band**
 - **Little Shuswap Indian Band**
- **Simpcw and Adams Lake are involved in the baseline studies – we have General Services Agreements with both communities**



**YELLOWHEAD
MINING INC.**

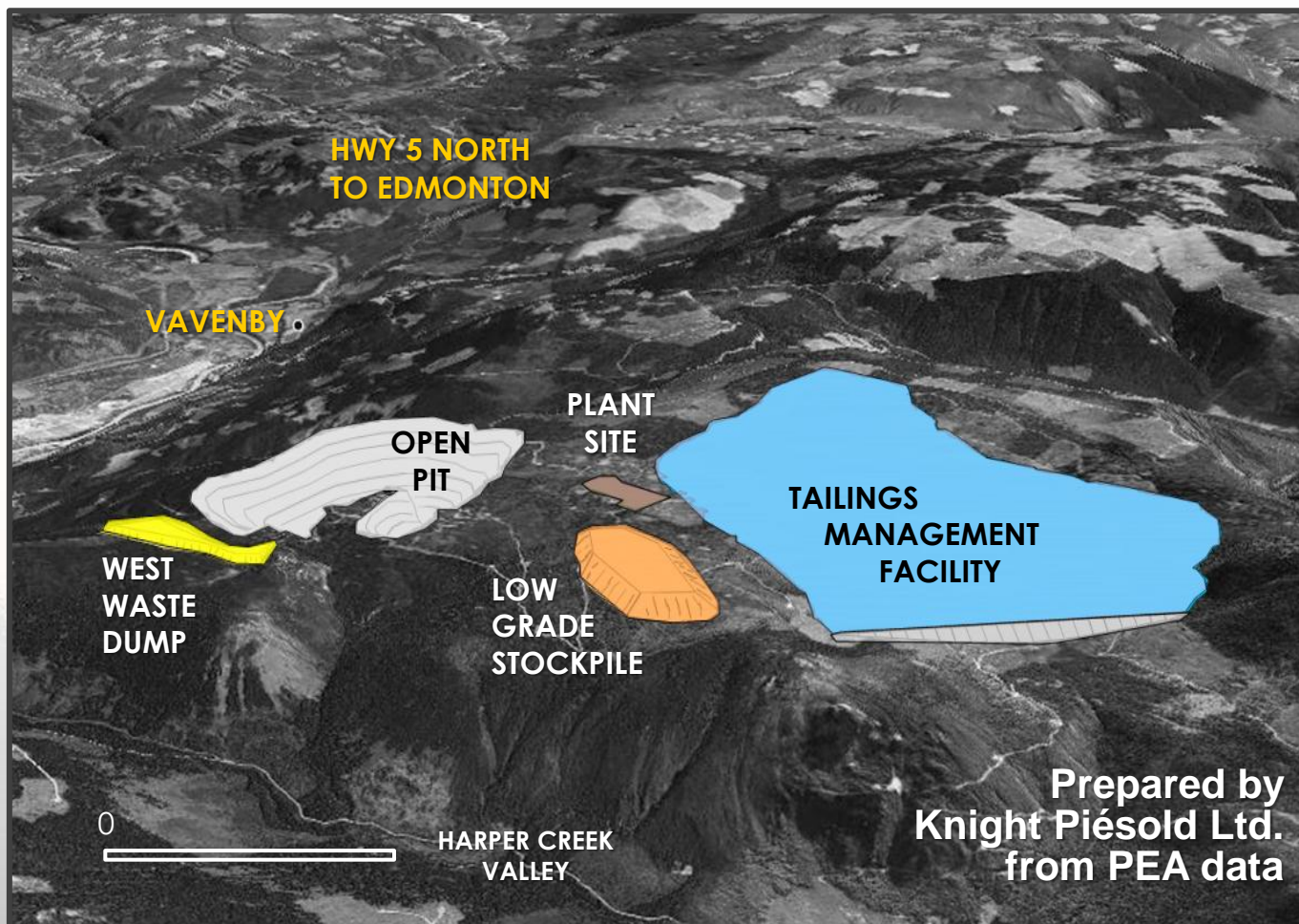
PROJECT LOCATION





CONCEPTUAL PROJECT LAYOUT

**YELLOWHEAD
MINING INC.**





**YELLOWHEAD
MINING INC.**

- **22 year mine life**
- **Milling rate 70,000 tonnes/day**
- **Low Stripping Ratio (0.9:1) Life-of-mine (LOM)**
- **LOM Copper Production - 2.8 billion lbs**
- **LOM Gold - 265,000 oz**
- **Silver - 4.8 million oz**

- **Adjacent Rail Loadout and Power at Vavenby**

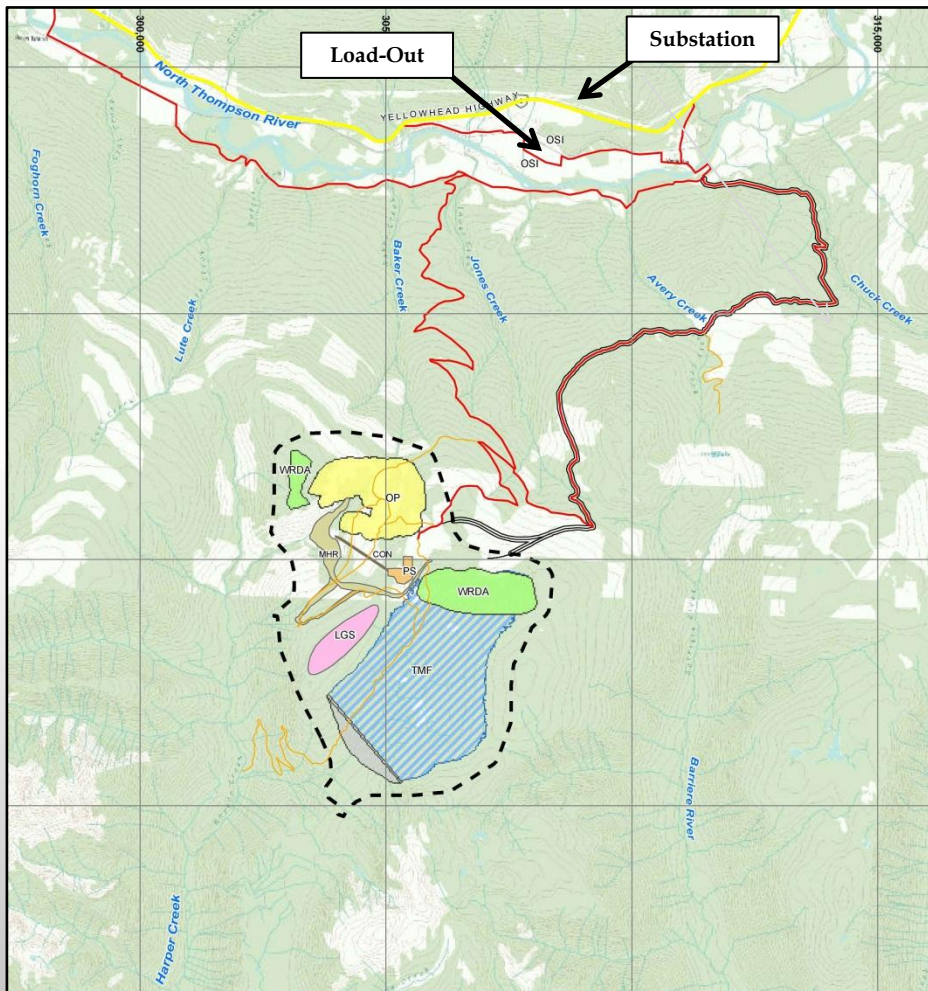
- **Local community workforce located nearby in Vavenby, Clearwater, Barriere and Blue River**

- **Capital Cost CDN\$759 million (2010)**



ROAD ACCESS, POWERLINE, AND LOAD-OUT

YELLOWHEAD
MINING INC.

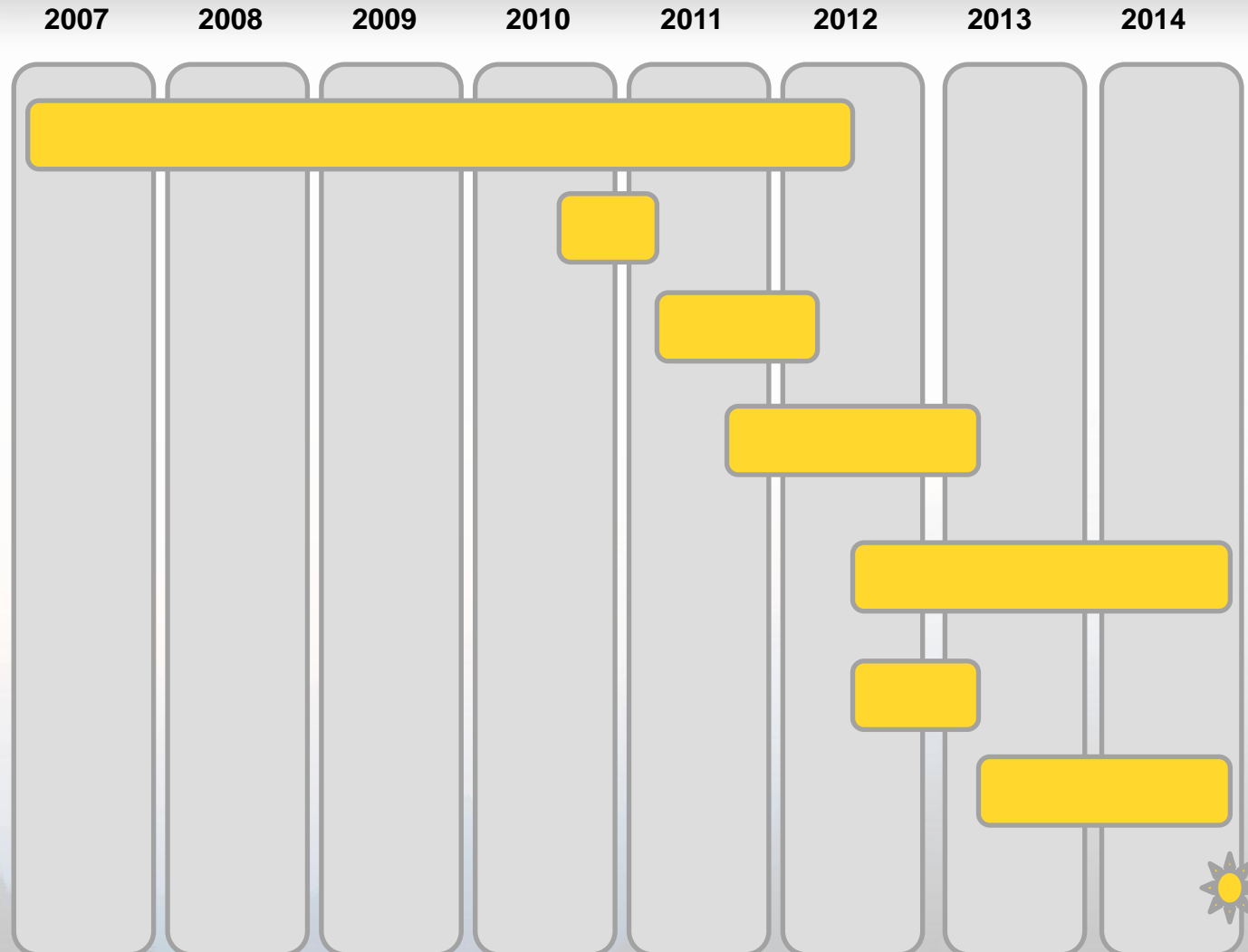


- Minor upgrades and maintenance of the existing Jones Creek and Vavenby Mountain Forest Service Roads
- Office, warehouse, and concentrate load-out in Vavenby
- A 138 kV transmission line from the Plant Site to an existing substation in Vavenby and distribution power lines within the Mine Site Area



HARPER CREEK PROJECT TIMELINE

**YELLOWHEAD
MINING INC.**





**YELLOWHEAD
MINING INC.**

HARPER CREEK PROJECT EMPLOYMENT OPPORTUNITIES

- ~ 500 – 600 Construction Jobs at Peak
- ~ 400 Direct Operations Jobs
mine, mill, administration
- ~ 800 Indirect jobs in BC (2x multiplier)
(Mining Association of BC, Oct. 2011)



**YELLOWHEAD
MINING INC.**

CONSTRUCTION/OPERATIONS POSSIBLE CONTRACTING OPPORTUNITIES

- **Surveying**
- **Road construction and maintenance**
- **Logging**
- **Concrete supply and construction**
- **Earthworks**
- **Drilling and blasting**
- **Catering and housekeeping**
- **Casual labour**
- **Concentrate haulage**
- **Fuel supply (gasoline, propane, diesel)**
- **Food and catering supplies**
- **Stationery & office supplies**
- **Satellite and cellular communications**
- **Environmental monitoring**
- **Expediting**



**YELLOWHEAD
MINING INC.**

Jobs in Mining

Mining is one of the fastest growing and highest paying industries in Canada

It is the largest employer of Aboriginal peoples

Estimated that there will be 7500 new job openings in mineral exploration & mining industry in BC 2012

www.mining.bc.ca



**YELLOWHEAD
MINING INC.**

HARPER CREEK PROJECT - JOBS

400 Jobs in the Mill

Entry Level \$31,000 +

- **Trades Helpers, Security Officers, Fuel Attendants, Driller Helpers, Apprentices**

Skilled Jobs \$42,000+

- **Truck Drivers, Drillers, Blasters**

Mill Operators (YMI will train in-house) \$50,000+

- **Crushers & Grinding, Flootation Process, Filtering & Dewatering, Tailings**

www.acareerinmining.ca www.careersinconstruction.ca



YELLOWHEAD
MINING INC.

Apprentices and Trades TRU, BCIT, NWCC

- **Heavy Duty Mechanics**
- **Machinists**
- **Plumbers**
- **Steamfitters, Pipefitters**
- **Welders**
- **Electricians**
- **Millwright**



**YELLOWHEAD
MINING INC.**

The Harper Creek Project is in a harmonized environmental review process with BC Environmental Assessment Office and Canadian Environmental Assessment Agency

Working Group of Governments (federal, provincial, local), and First Nations has been established

Some Baseline studies ongoing since 2007





**YELLOWHEAD
MINING INC.**

- **Socio-economics - Laurie McNeil and Associates**
- **Geology - Yellowhead, CME, and SRK Consulting**
- **Surface Water Quality - Dillon Consulting**
- **Groundwater - Knight Piésold**
- **Climate and Hydrology - Knight Piésold**
- **Human Health - Knight Piésold**
- **Visual Quality - Strategic Forest Management**
- **Fisheries and Aquatic Habitat - Knight Piésold**
- **Terrestrial Wildlife and Vegetation - Keystone Wildlife Research**
- **Archaeology and Cultural Heritage Overview - Simpcw Resources Ltd. / Terra Archaeology**



**YELLOWHEAD
MINING INC.**

- **75 interviews completed with members of the public**
- **Socio economic impact also conducted for 4 local First Nations**
- **High level of support in the area for the project**

Initial findings:

- **Competition for limited and specialized labour pool**
- **Many residents have left the community for jobs and want to return. They are looking forward to employment and training opportunities, and access to local jobs.**



Employment and Training Baseline Highlights

- **Mostly part-time and/or seasonal work**
- **1 in 4 employed full-time compared to 1 in 2 in the non-Aboriginal population**



SIMPCW SOCIO-ECONOMIC BASELINE

**YELLOWHEAD
MINING INC.**

Employment and Training Baseline Highlights:

- comparatively higher number of occupations in social science, education, government & religion and less in business, finance, & administration
- 7 training & employment services in the area

**Top Three Employment Industries by Workers Employed Since 2005 Age 15+
Comparison Between the Simpcw First Nation, BC Aboriginal, and BC General Populations, 2006**

Rank	Simpchw First Nation		British Columbia Aboriginal Population		British Columbia Total Population	
	Industry	%	Industry	%	Industry	%
1	Accommodation and food services	22%	Professional, scientific and technical services	21%	Retail trade	12%
2	Construction	19%	Information and cultural industries	12%	Health care and social assistance	10%
3	Public administration	15%	Arts, entertainment, and recreation	10%	Accommodation and food services	9%



Education Baseline Highlights:

- **88% of persons age 25-64 had a high school certificate and/or post-secondary education in 2006:**
 - **27% less high school dropouts compared to the BC Aboriginal population**
- **86% of persons aged 15-24 attended school in 2006, higher than both the BC Aboriginal population and BC general population for that year**
- **post-secondary patterns closely parallel the BC general population in 2006, with exception of university:**
 - **62% of persons aged 25-64 with post-secondary qualifications, up from 56% in 2001**
 - **notable characteristic is diverse range of study**



SURFACE WATER QUALITY AND GROUND WATER

YELLOWHEAD
MINING INC.

Surface Water Quality

- 19 surface water quality sample locations
- Sampling began in 2007
- Sampling Frequency:
 - Monthly (reduced frequency during winter months)
 - Weekly during freshet and late summer low flow periods
- Water sampling will continue during 2012

Ground Water

- 17 groundwater wells installed at key locations downstream of proposed facilities
- Quarterly sampling scheduled targeting seasonal high, intermediate, and low groundwater elevations



- **Original weather station installed during December 2007**
- **Upgraded weather station was installed during August 2011**
- **Seven hydrology stations have been established for the Project area on six different streams**
- **Weekly sampling was completed for the 2011 freshet season**
- **Monthly sampling has continued throughout the year in order to develop a competent rating curve for each station**
- **Winter measurements will be completed to characterize the low flow, under ice (if applicable) conditions**



**YELLOWHEAD
MINING INC.**

New Climate Station



Hydrology Station



**Stream
Gauging at
Hydrology
Station
(flow
volume
estimate)**



**YELLOWHEAD
MINING INC.**

- **Country food use in the Mine Site Area is being identified through interviews and government data**
- **Baseline sound monitoring is being conducted in Vavenby and Birch Island**
- **Dustfall monitoring is being conducted within the Mine Site Area and the North Thompson Valley**
- **Fish tissue samples have been collected for metals analysis**



**YELLOWHEAD
MINING INC.**



**Rainbow trout used
for tissue sampling**



Dust Monitoring Station



**Portable
Noise
Monitoring
Equipment**



- **Visual quality baseline data were collected from key vantage points**
- **Visual quality modeling will occur following the completion of the engineering feasibility study**
- **Guidance for the visual quality assessment was developed for forestry cutblocks**
- **This will provide stakeholders with a visual assessment of what the mine will look like when it is constructed**



**YELLOWHEAD
MINING INC.**

- Fisheries and aquatic studies were initiated during 2011 and will continue in 2012
- Confirmation of the Mine Site Area footprint as fishless
- All life history stages (fry, juveniles and large adults) of bull trout were observed in Harper Creek, consistent with previous studies by Hagen and Baxter (1992)
- Fish presence in the lower reaches of streams draining the Mine Site Area (Baker, Jones, Open Pit, and TMF Creeks)
- Presence of resident and migratory bull trout in upper Harper Creek (blue-listed)
- Presence of coho salmon and other fish species in lower Harper Creek
- Resident rainbow trout were found in lower Baker and Jones Creek



**YELLOWHEAD
MINING INC.**



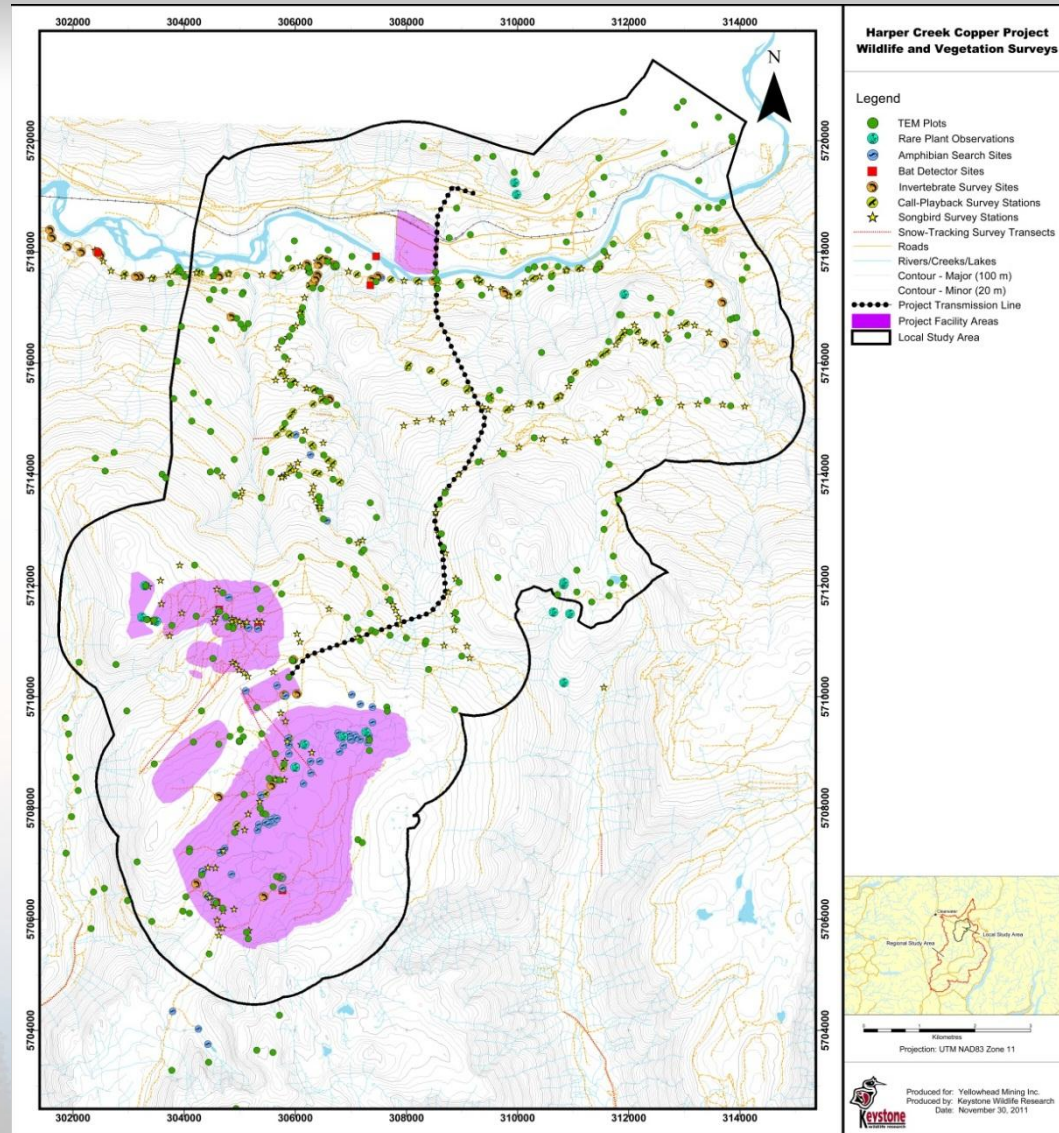


- **Ground survey data and aerial photography were collected to generate creek morphology and fish habitat maps**
- **Transect data were collected at key locations to assist in instream flow habitat modeling**
- **Fish habitat parameters were collected as supporting information to the fish sampling data**
- **Sediment, benthic invertebrates, and periphyton samples were collected from Harper Creek, Baker Creek, and the Barriere River**
- **Sediment samples were also collected from North Barriere Lake.**
- **Bull trout and rainbow trout samples were retained for metals in tissue analysis.**
- **Methods are consistent with Environment Canada and MOE guidelines and standards.**



**YELLOWHEAD
MINING INC.**

TERRESTRIAL WILDLIFE AND VEGETATION





TERRESTRIAL WILDLIFE AND VEGETATION

YELLOWHEAD
MINING INC.

- Amphibian surveys performed throughout study area in 2008, 2011, focused on facility footprints
 - Breeding surveys at wetlands
 - Road surveys for amphibian migrations
- Songbird surveys conducted along roads in study area in 2008, 2011
- Call-playback surveys conducted in/near suitable habitat for owls, goshawk
 - Boreal Owl surveys in 2008
 - Western Screech-owl, Northern Goshawk surveys in 2011
- Riverine surveys for Harlequin Duck performed in 2008





TERRESTRIAL WILDLIFE AND VEGETATION

**YELLOWHEAD
MINING INC.**

- **Acoustic bat surveys conducted in 2011**
- **Winter track surveys conducted in 2008, 2011 in select areas**
 - **Focused on facility footprints and Harper Creek**
- **Invertebrate surveys, focused on butterflies and dragonflies, in 2011**
- **Rare plant surveys conducted in 2011**
- **Ecosystem (TEM) mapping and wildlife habitat ratings in local study area**
 - **Plots conducted in 2008 and 2011**
 - **Wildlife habitat ratings for grizzly bear, caribou, and other species**





**YELLOWHEAD
MINING INC.**

- **An Archaeological Impact Assessment (AIA) is being conducted on entire proposed mine impact area in an effort to bring as much certainty to all Parties regarding potential archaeological resources on site**
- **A Traditional Use Study (Simpcw) is being done to provide a more complete picture of cultural resources and traditional use of the project area**
- **Simpcw has contracted Terra Archaeology to conduct the assessment**
- **Drill pads and access routes were assessed to facilitate the drilling program**



Methodology

- Crews made up of Simpcw, Adams Lake, and Terra field workers
- Pedestrian survey of entire study area and specific drill locations
- Subsurface testing was done in areas with potential for buried deposits



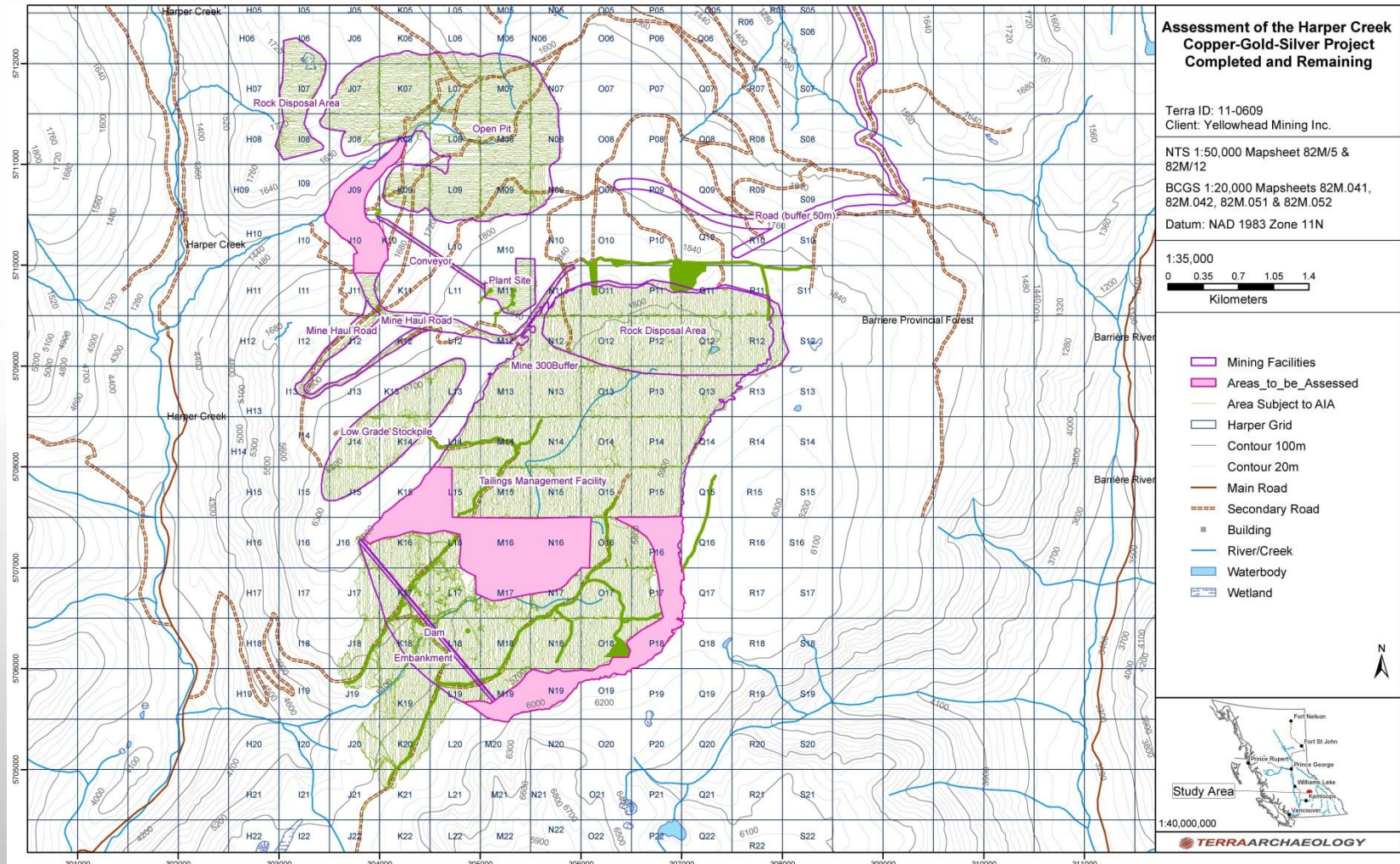
Results

- **Fieldwork conducted Fall 2011 continuing in Spring 2012**
- **1450 hectares assessed to date; 250 hectares remaining**
- **Drill pads and access roads were also assessed**
- **Only 1 archaeological site identified to date**



**YELLOWHEAD
MINING INC.**

ARCHAEOLOGY





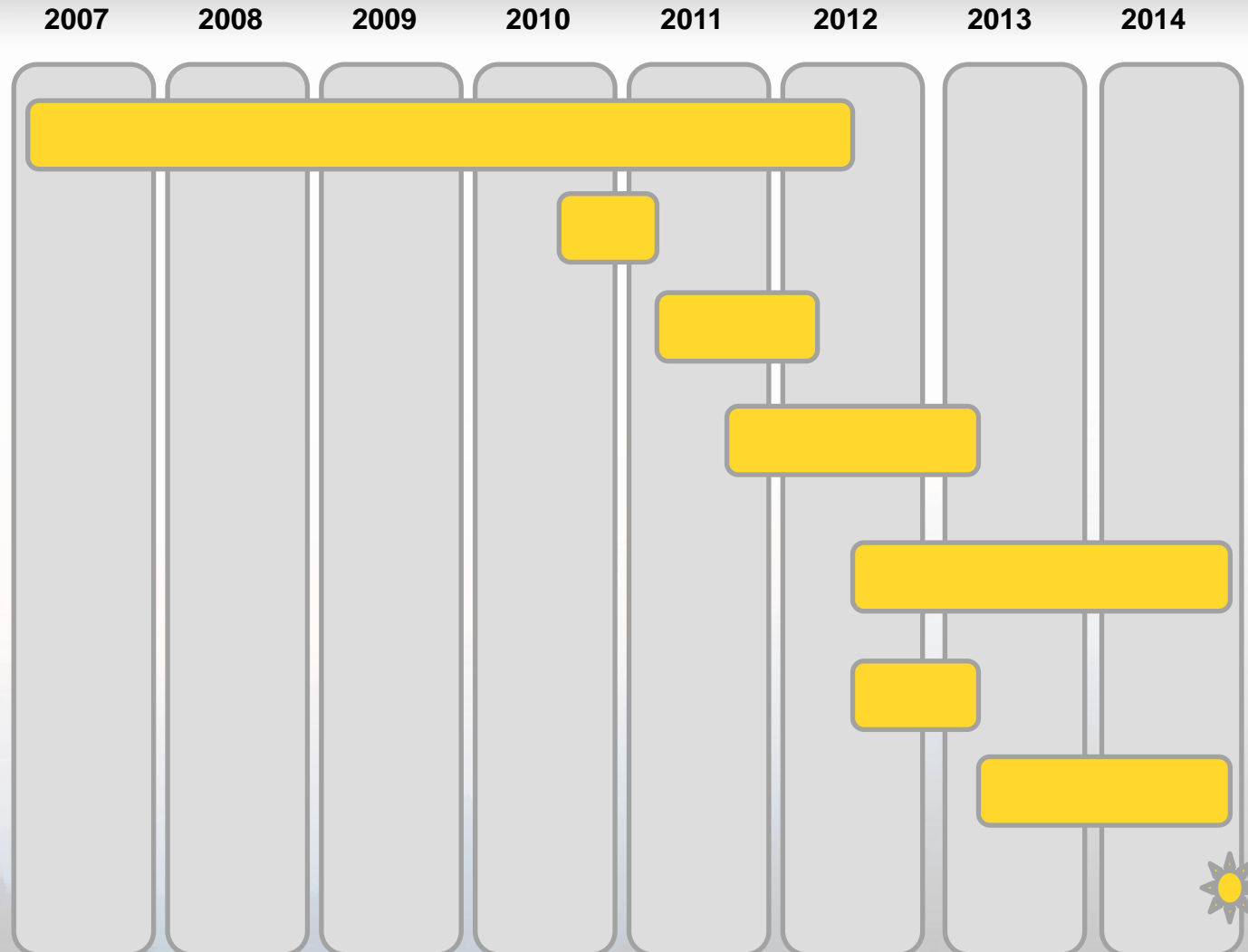
Next Steps

- **Complete Archaeological Impact Assessment (AIA) on remaining 250 hectares (Spring 2012)**
- **Preparation of AIA Final Report and Management Recommendations (draft end of February 2012)**
- **Incorporation of AIA Final Report into the EA Application (May 2012)**
- **Traditional Use Study in progress (started Nov. 2011 to be completed Feb. 2012) by Simpcw**



HARPER CREEK PROJECT TIMELINE

**YELLOWHEAD
MINING INC.**





**YELLOWHEAD
MINING INC.**

**Thank you.
We value your input.**

**For more information please contact:
Charlene Higgins, Vice President, Environment,
Community & First Nations Relations**

T: 604.681.1709 Ext 210

M: 250-320-3387

chiggins@yellowheadmining.com

www.yellowheadmining.com

Appendix 3-D(c)

*YMI Presentation at the September 18, 2014 Thompson-Nicola
Regional District Open House*

HARPER CREEK MINE PROJECT

**Application for an Environmental Assessment Certificate /
Environmental Impact Statement**



**YELLOWHEAD
MINING INC.**

Thompson - Nicola Regional District
HARPER CREEK PROJECT

September 18, 2014

TSX : YMI



**YELLOWHEAD
MINING INC.**

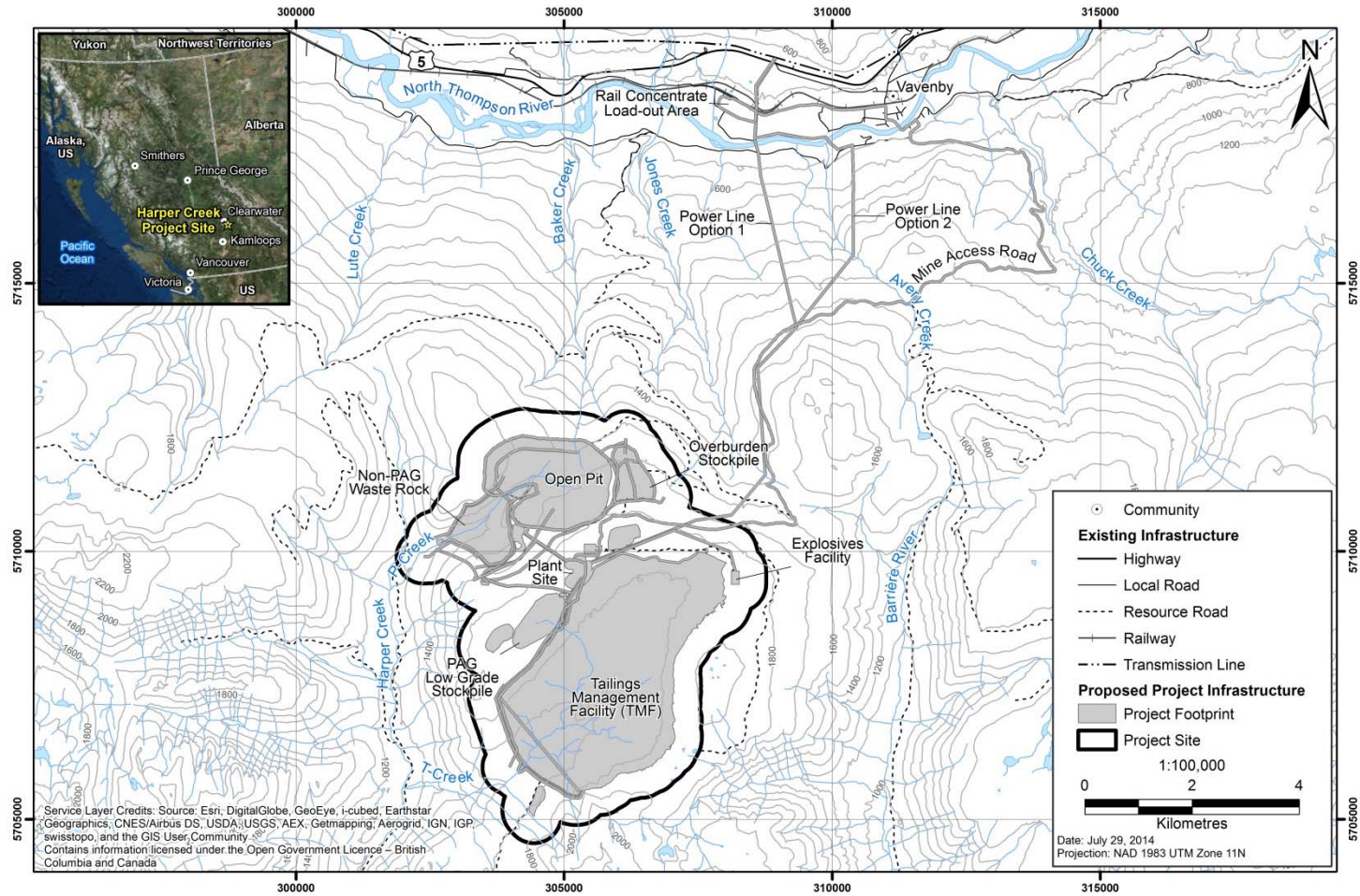
PROJECT OVERVIEW

- Harper Creek Project: Open pit copper mine and concentrate processing facility
- Mine Life: 28 years
- Daily Ore Throughput: 70,000 tonnes/day
- Phases:
 - Construction 2 Years
 - Operations 1 – Active Mining from the Open Pit 23 Years
 - Operations 2 – Low Grade Ore Processing 5 Years
 - Closure & Reclamation 7 Years
 - Post – Closure 50 Years
- Rail load-out facility: Vavenby
- Mine Access Road: Vavenby Forest Service Road



**YELLOWHEAD
MINING INC.**

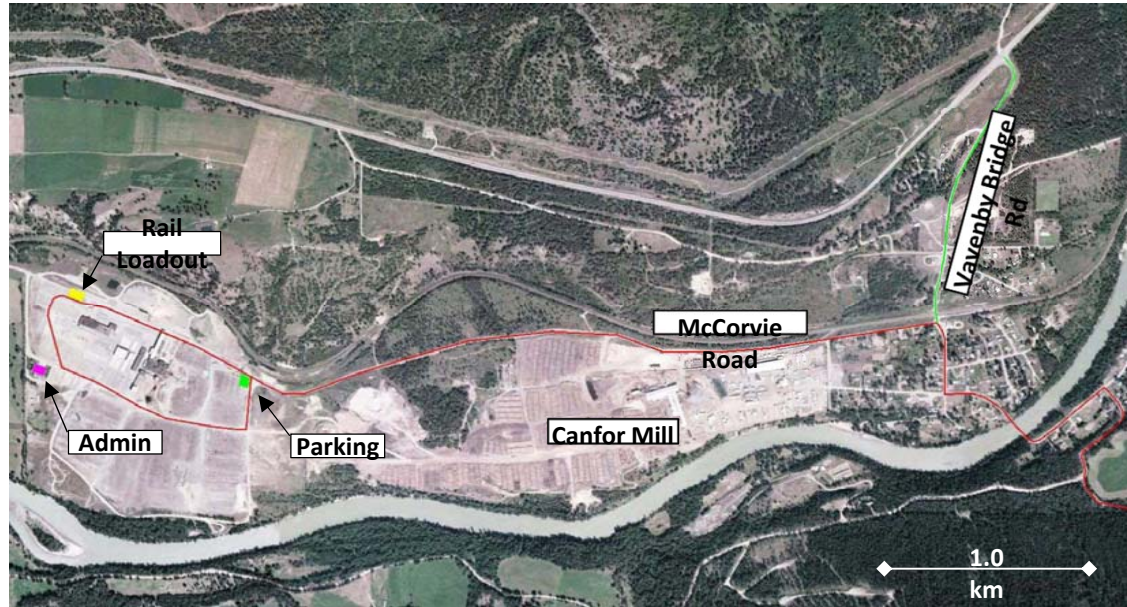
PROJECT LOCATION AND INFRASTRUCTURE





**YELLOWHEAD
MINING INC.**

PROJECT ACCESS



- Yellowhead Highway to Vavenby Bridge Road intersection, then to Vavenby FSR
- Rail load out facility at the old Weyerhaeuser sawmill property (owned by Yellowhead)
- All mine employees will park at the old Weyerhaeuser sawmill property and travel to the mine site by a Yellowhead operated bus



**YELLOWHEAD
MINING INC.**

TAILINGS MANAGEMENT FACILITY

- Canadian Dam Association - Dam Safety Guidelines (2007) (“CDA Guidelines”)
- CDA Guidelines prescribe:
 - Classification of tailings dams
 - Design criteria for maximum flood and seismic events
 - Operations, maintenance and surveillance manuals
 - Independent dam safety reviews
- Harper Creek tailings management facility (TMF) will be:
 - designed, constructed and operated in accordance with all CDA Guidelines
 - designed using the highest possible criteria based on maximum probable events
 - maximum probable events are those that occur every 1 in 10,000 years



**YELLOWHEAD
MINING INC.**

FEASIBILITY STUDY

- Updated Feasibility Study (August 2014)
 - Design changes to:
 - optimize the mine site footprint and general arrangement of the Project
 - improved the mine waste and mine water management plans
 - reduced the environmental impacts of the Project
 - Initial capital cost of ~C\$1 billion
 - Life of mine sustaining capital of ~\$C335 million
- BC Hydro
 - Promised by the BC Government when Harper Creek is ready for operations
 - Load required - ~80 MW
 - Re-start discussions with BC Hydro when EA Application in review phase



**YELLOWHEAD
MINING INC.**

ENVIRONMENTAL ASSESSMENT PROCESS

- Original EA Application submitted to the BC EAO in April 2013
- Screening Comments received from the BC EAO in May 2013
- The Screening Comments are being addressed as follows:
 - Application/EIS is being completely reorganized and restructured
 - Additional baseline environmental data is being included in the Application/EIS
 - Each Screening Comment will be specifically addressed
 - Series of technical meetings held with MOE and MEM during 2014
 - Working Group meeting held on September 17, 2014
- Application/EIS to be re-submitted to the BC EAO by October 31, 2014
- Review phase of EA Process anticipated to be completed ~June 2015



**YELLOWHEAD
MINING INC.**

FIRST NATIONS

- Four First Nations:
 - Simpcw
 - Neskonlith
 - Adams Lake
 - Little Shuswap
- Project located in traditional territory of Simpcw
- Consultation activities:
 - Section 11 Order identified Simpcw and Adams Lake
 - Section 13 Order added Neskonlith and Little Shuswap
- Simpcw and Adams Lake involved in preparation of initial EA Application
- Consultation activities ongoing



**YELLOWHEAD
MINING INC.**

EMPLOYMENT

- Our intent is to hire local and regional residents first, when available
- Construction:
 - temporary construction camp
 - ~ 600 construction jobs
- Operations:
 - no permanent camp
 - Prefer workers from the local communities of Vavenby, Clearwater, Barriere
 - ~450 operations jobs (mine, mill, administration)
- Indirect Employment:
 - ~900 to ~1,250 indirect jobs
 - 2 to 3 time multiplier



**YELLOWHEAD
MINING INC.**

ECONOMIC BENEFITS

- Direct employment
- Indirect employment (supplier industries)
- Capital expenditures:
 - ~\$C1 billion in initial capital expenditures during construction
- Gross domestic product (direct and indirect activities – all levels of government):
 - Construction: ~\$511 million to BC GDP
 - Operations: ~\$3,617 million to BC GDP
- Tax revenue (direct and indirect activities – all levels of government):
 - Construction: ~\$116 million
 - Operations: ~\$842 million
- *Source: BC Stats. 2014. BC Input-Output Model Report: Harper Creek*



**YELLOWHEAD
MINING INC.**

PROJECT DEVELOPMENT SCHEDULE

PROJECT OVERVIEW	2016												2017												2018											
	J	F	M	A	M	J	J	A	S	O	N	D	J	F	M	A	M	J	J	A	S	O	N	D	J	F	M	A	M	J	J	A	S	O	N	D
Start Detailed Engineering & Procurement	◆ Start Detailed Engineering & Procurement																																			
Commitments on Long Lead Equipment	◆ Commitments on Long Lead Equipment																																			
Field Construction Starts													• Field Construction Starts																							
Receive Mine Equip for Haul Road & Tailings Starter Dam Construction													• Receive Mine Equipment for Haul Road & Tailings Starter Dam Construction																							
Mine Equipment Assembled													◆ Mine Equipment Assembled																							
BC Hydro Power Required for Commissioning / Bumping Motors																									◆BC Hydro Power Avail for Commissioning											
BC Hydro Power Available																									◆BC Hydro Power Available											
Overall Mechanical Completion (Excl BC Hydro Work)																									◆Mech Completion											