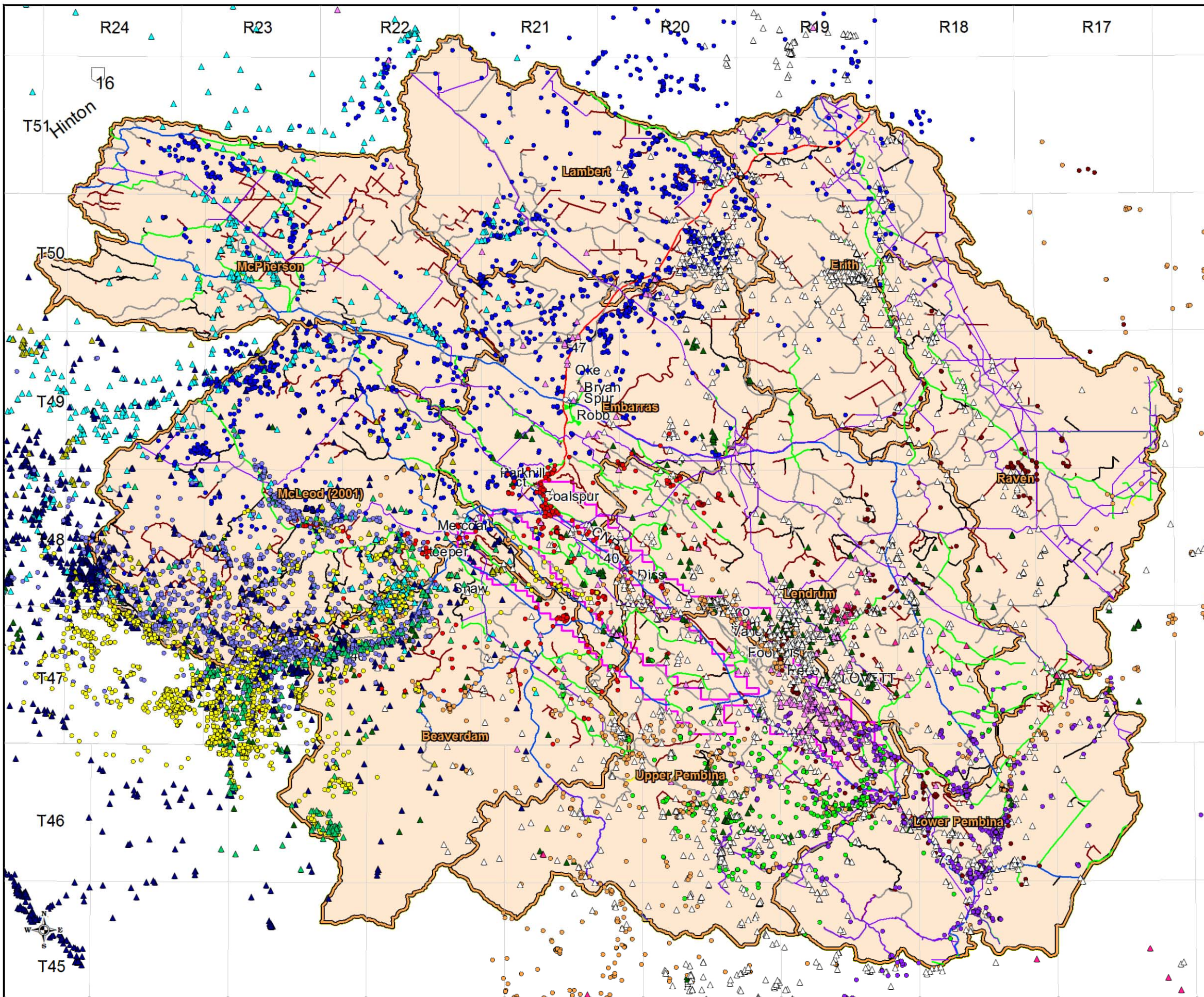


Figure 145-1. Linear features in the regional study area

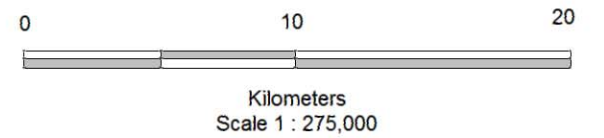


- Anthropogenic Linear Features**
- Road: Paved - Undivided - 2 Lane
 - Road: Gravel - 2 Lane
 - Road: Gravel - 1 Lane
 - Road: Unimproved
 - Road
 - Truck Trail
 - Road: Unclassified
 - Pipeline

Grizzly Individuals in Coal Valley Area

Bear ID	Total Occurrences
G007	(383)
G011	(360)
G012	(2256)
G014	(393)
G023	(2087)
G024	(1505)
G026	(246)
G027	(1171)
G029	(2461)
G033	(3135)
G054	(124)
G055	(443)
G061	(674)
G062	(378)
G100	(1551)
G208	(414)

RT_Roads by FEATURE_TY



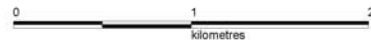
cvri Robb Trend and Bryan Tower
Proposed Mine Extension



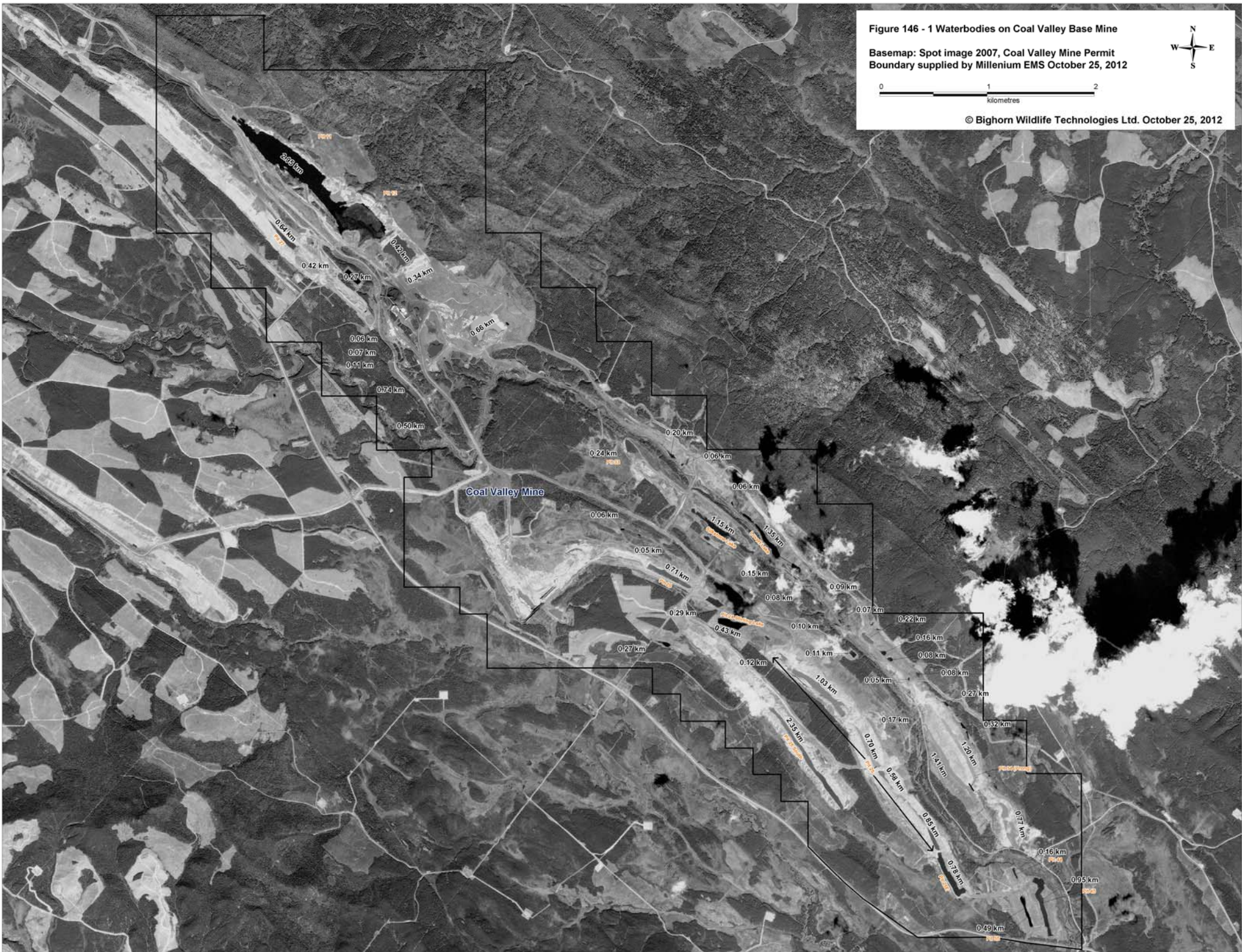
Source: Foothills Research Institute
Grizzly Bear Program
Box 6330
Hinton, AB
T7V 1X6.

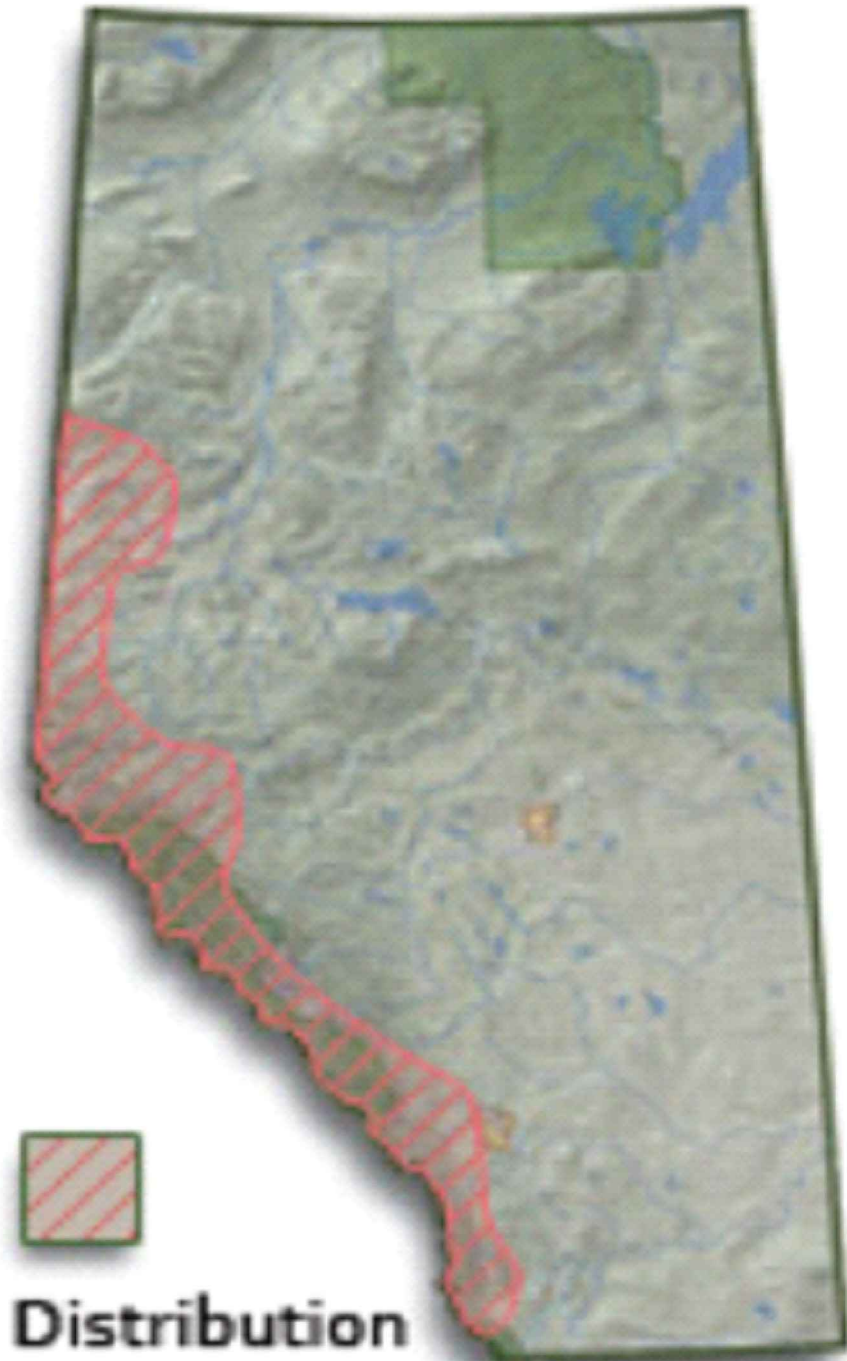
Figure 146 - 1 Waterbodies on Coal Valley Base Mine

Basemap: Spot image 2007, Coal Valley Mine Permit
Boundary supplied by Millenium EMS October 25, 2012



© Bighorn Wildlife Technologies Ltd. October 25, 2012



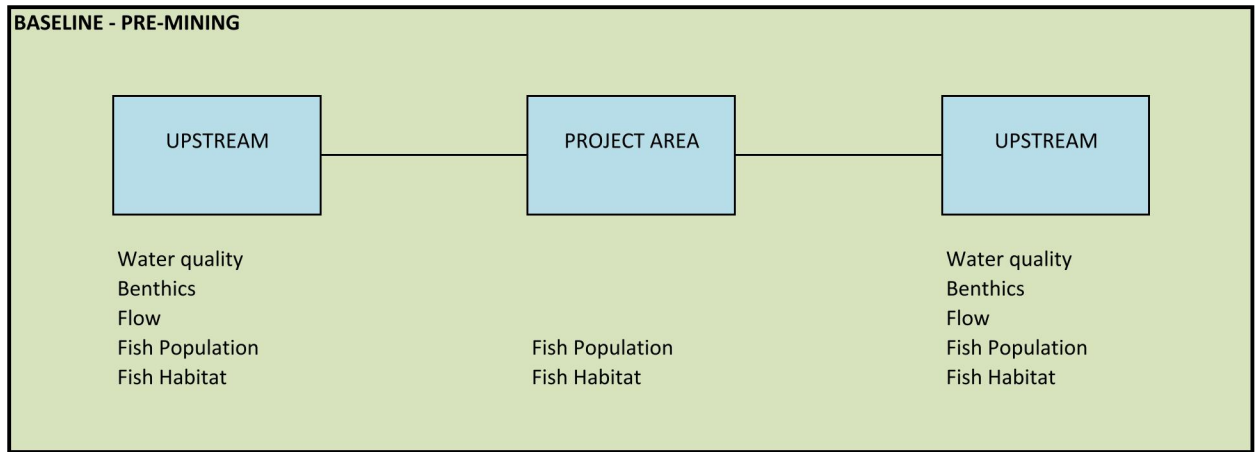


PROJECT:
**Coal Valley Mine
 Robb Trend Project**

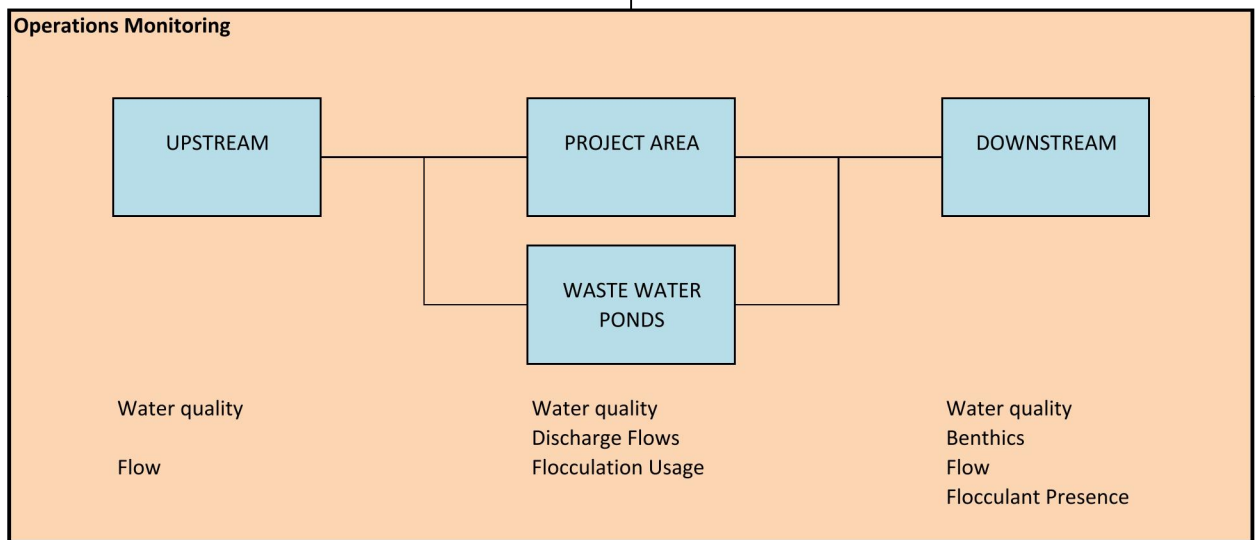


TITLE:
**Distribution of Long Toed Salamander in
 Alberta**

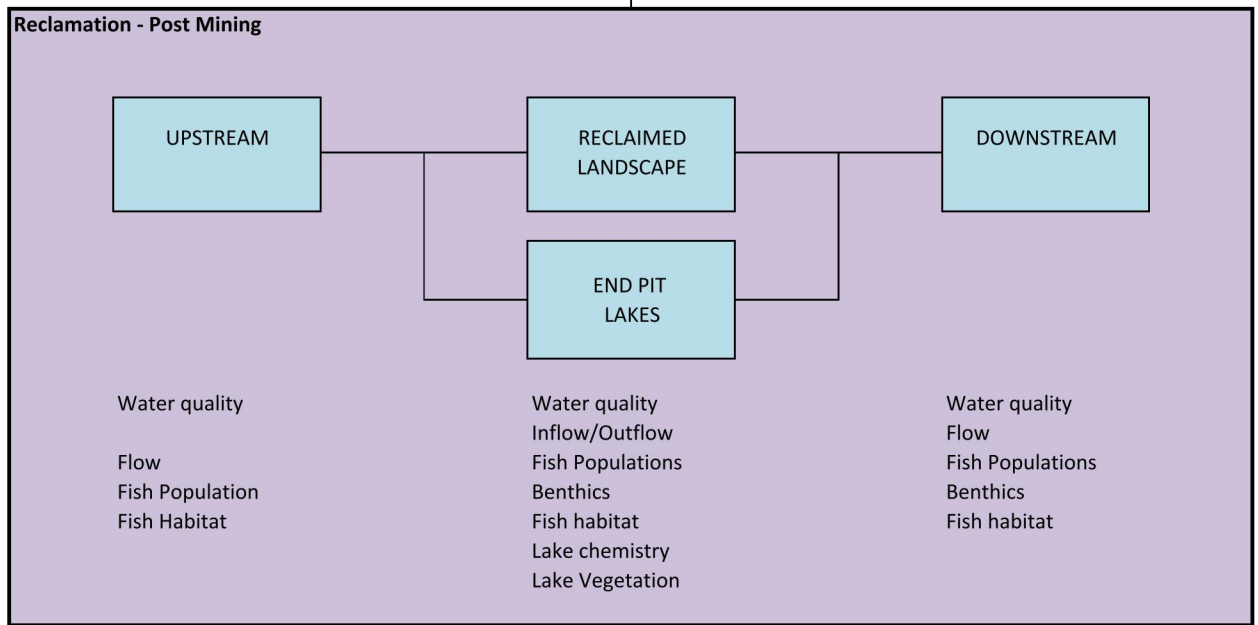
FILE: ...Final Docs\SIR\ERCB\SIR Drawings.dwg	
DRAWN: RS JG	FIGURE:
CHECKED: KP	149-1
DATE: Dec 5 12	
PROJECT: 08-0-1	




COMPARISON
EVALUATION
MODIFICATION



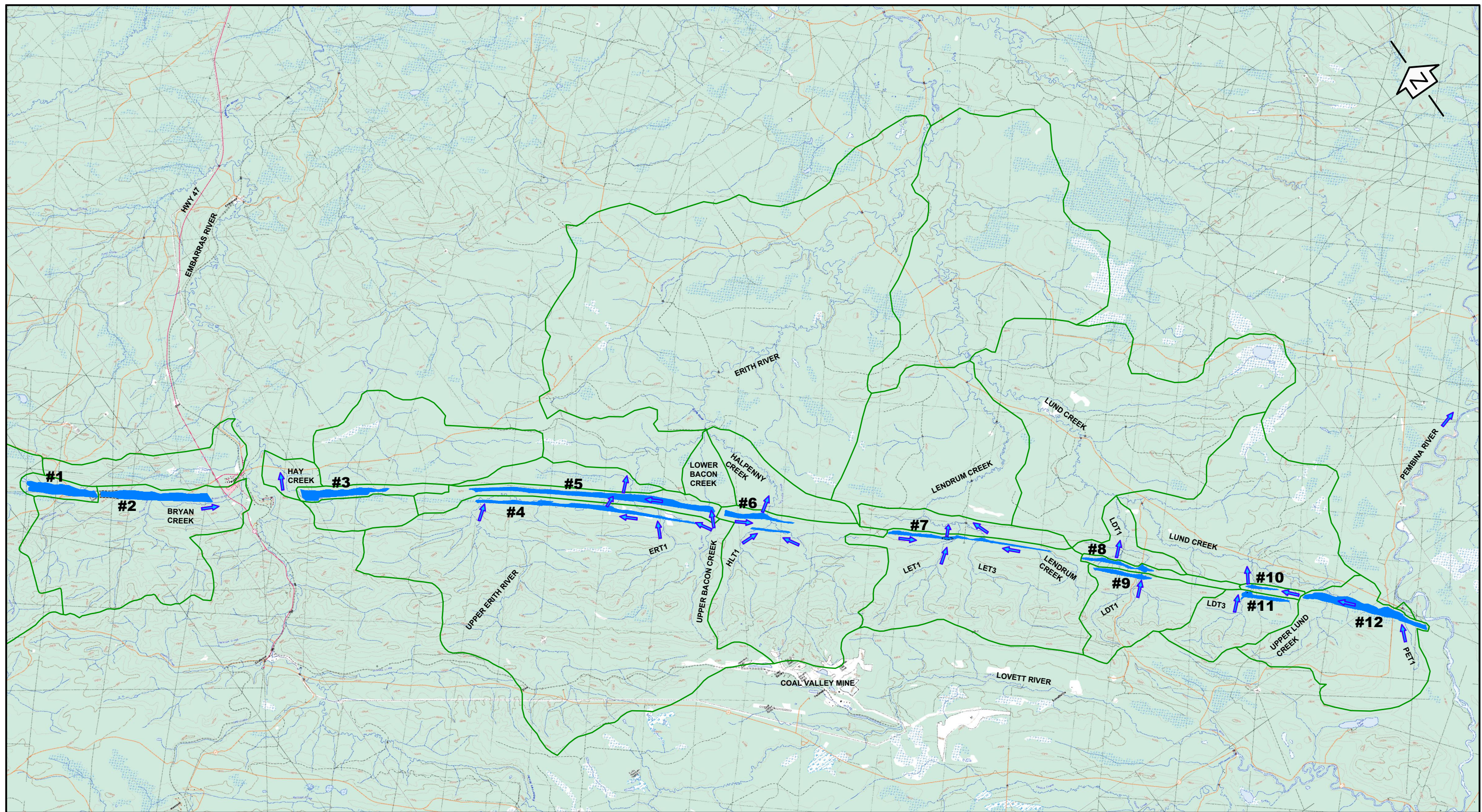
COMPARISON
EVALUATION
MODIFICATION



COMPARISON
EVALUATION
MODIFICATION

PROJECT: Coal Valley Mine Robb Trend Project		 <small>FILE: SIR Drawings.dwg</small>	
TITLE: Aquatic Resources Monitoring & Adaptive Management			

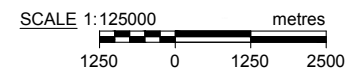
F:\5867\Drainage\2011\5867-DA-Post.dwg - Drainage - Friday, August 31, 2012 10:38:22 AM - Nick Dyer
 PLOT 1:1 = Tablod(L)



Refer to Figures 75a-1 to 7 for detailed drainage layouts.

LEGEND

- Watershed Sub-Basin Boundaries
- █ End Pit Lakes
- ➔ Drainage Direction



REFERENCE: 83C15, 83C16, 83F01, 83F02, 83F03, 83F06, 83F07 © Department of Natural Resources Canada. All rights reserved.

DISCLAIMER: The information contained herein may be compiled from numerous third party materials that are subject to periodic change without prior notification. While every effort has been made by Matrix Solutions Inc. to ensure the accuracy of the information presented at the time of publication, Matrix Solutions Inc. assumes no liability for any errors, omissions, or inaccuracies in the third party material.



DATE: AUGUST 2012

FILE: 5867-DA-POST.DWG

DESIGN: D. COOPER

CHECK: D. RAMSEY

DRAWN: Z. STEELE

DATUM: UTM83-11

COAL VALLEY RESOURCES INC.

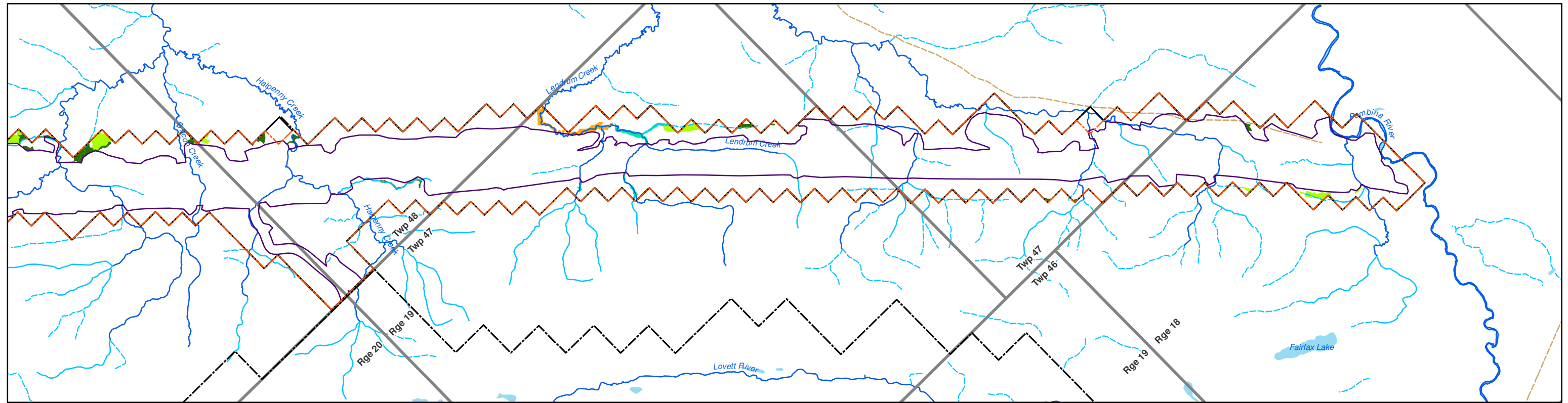
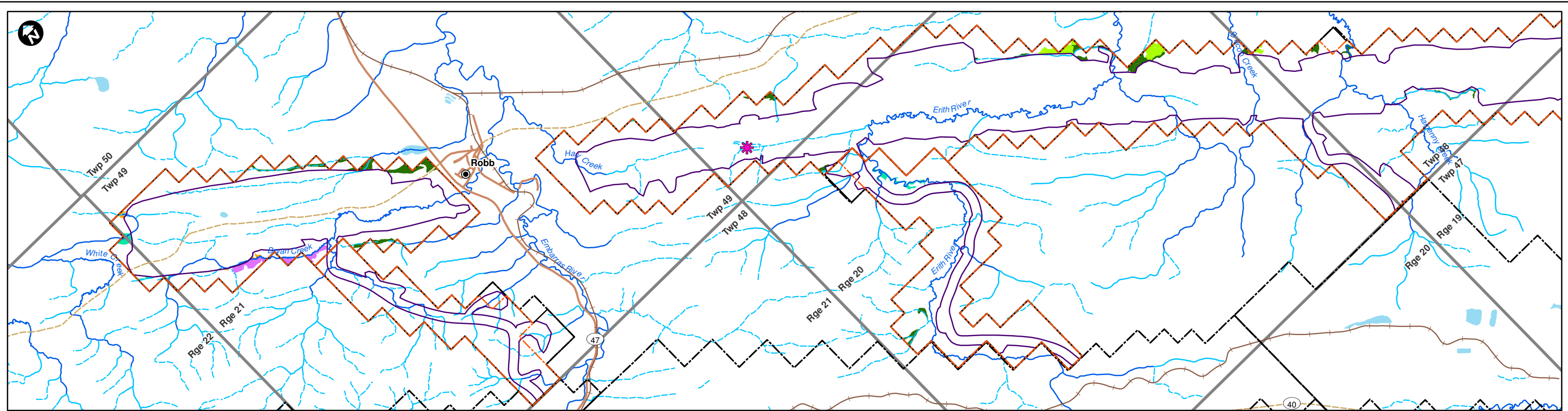
RECLAMATION DRAINAGE PLAN OVERVIEW

ROBB TREND PROJECT - SIR 183

FIGURE

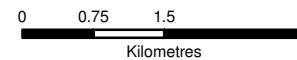
183-1

Document Path: K:\Active Projects 2008\Projects 08-001 to 08-050\08-041 Robb Trend\Final Docs\SIR\Fig 195-1 Wetland Adjacent to the Project Disturbance Boundary.mxd



Legend

- | | | | |
|--------------------------------|--------------------------|-------------------------|---|
| Local Study Area | Permanent Watercourse | Dominant Wetland | |
| Proposed Mine Permit Boundary | Intermittent Watercourse | BTNN - treed bog | STNN - wooded open canopy swamp (6-70% cover) |
| Existing Mine Permit Boundary | Ephemeral Watercourse | FONG - graminoid fen | MONG - marsh |
| Proposed Footprint Disturbance | Waterbody | FONS - shrubby open fen | WONN - open water (<2m deep) |
| Railway | | FTNN - treed fen | Floating Fen |



PROJECT: Coal Valley Mine Robb Trend Project		
TITLE: Wetlands Adjacent to the Project Disturbance Boundary		
DRAWN: PS	CHECKED: KP	FIGURE: 195-1
DATE: Dec 4/12	PROJECT: 08-041	