

# Biigtigong Nishnaabeg *Land History and Alienations*


April 6, 2022

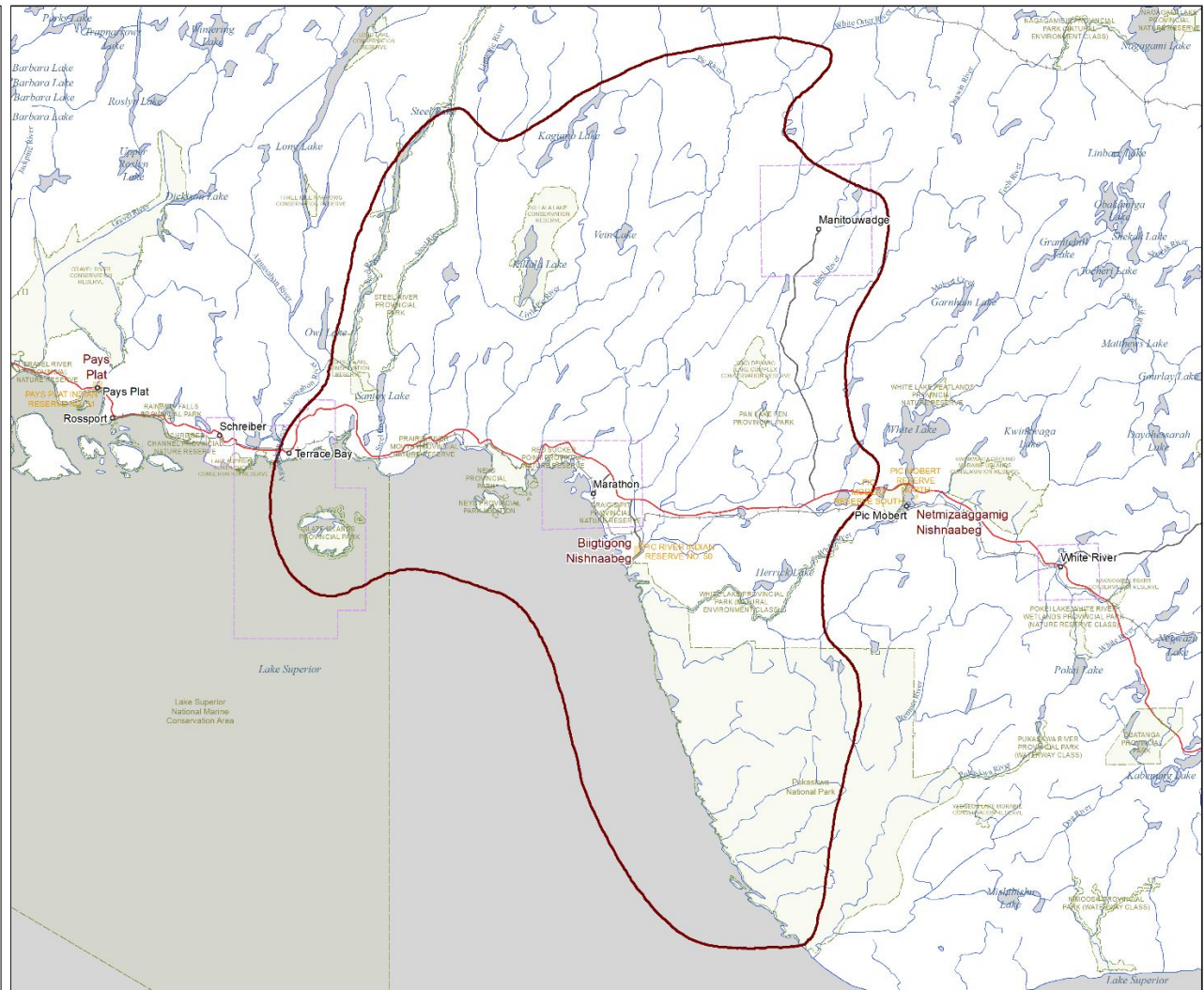


BIIGTIGONG  
NISHNAABEG

# Generation PGM Marathon Property

# Generation PGM Project Boundary and the Bigigong Nishnaabeg First Nation Aboriginal Title Area

 Bigigong Nishnaabeg Aboriginal Title Area



Confidential - not for circulation. Areas mapped are for discussion purposes only. Without prejudice to Aboriginal Rights and Title, including Title case and negotiations with the Crown. Areas mapped are not representative of all priority areas.



Map Creation Date: February 19, 2021  
 For more information, contact:  
 Juanita Starr, Director  
 Bigigong Nishnaabeg  
 Oilways of the Pic River First Nation  
 Heron Bay, Ontario P0T 1R0  
 P: (807) 229-8900 Ext 2

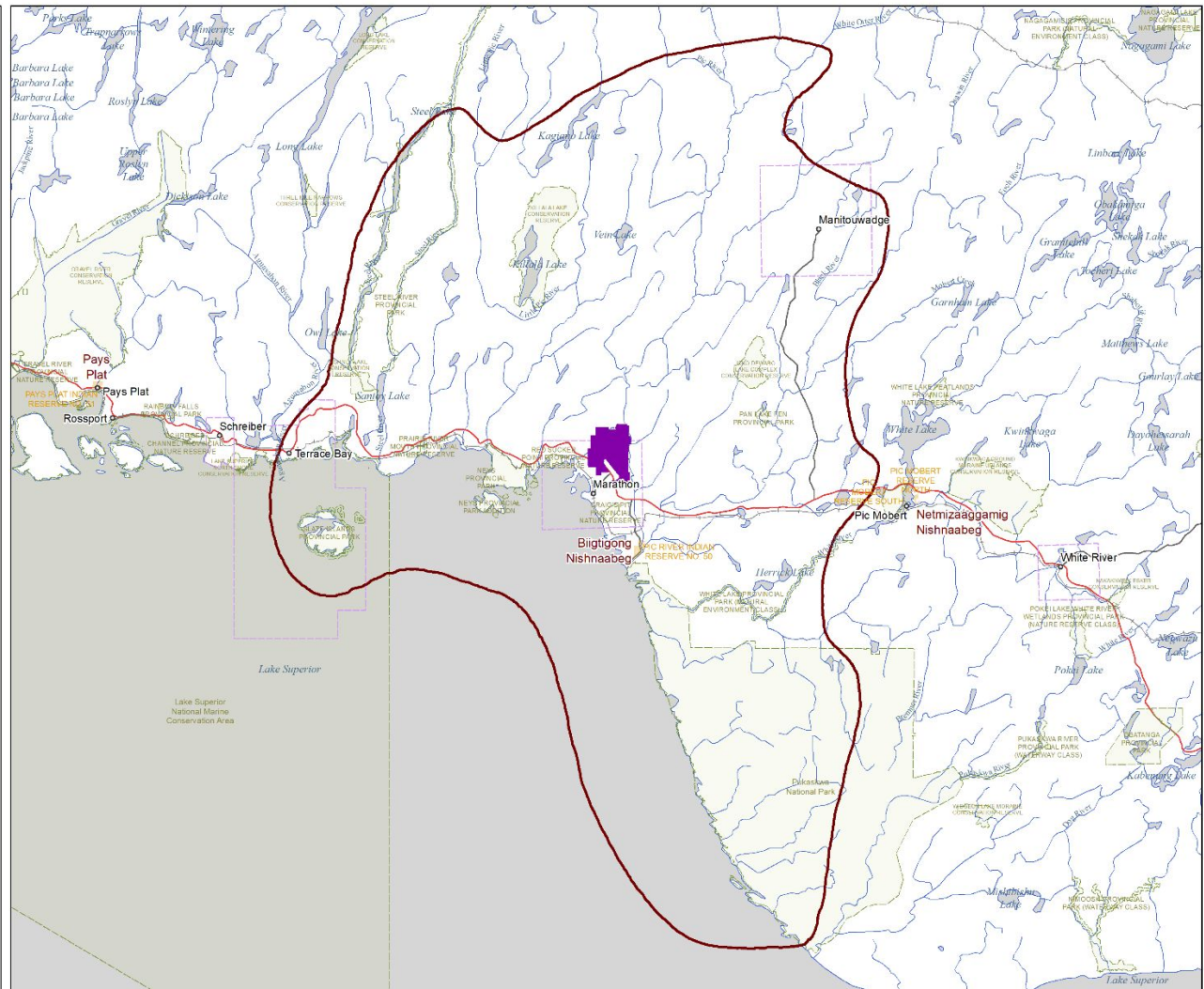


Map layout by David Carruthers  
 Framework: Atlas of Canada 1M  
 Projection: UTM Zone 16N, NAD83

1:675,000

# Generation PGM Project Boundary and the Biigtong Nishnaabeg First Nation Aboriginal Title Area

-  Biigtong Nishnaabeg Aboriginal Title Area
-  Generation PGM Project Boundary (MLAS, MENDM Changed 2017)



Confidential - not for circulation. Areas mapped are for discussion purposes only. Without prejudice to Aboriginal Rights and Title, including Title case and negotiations with the Crown. Areas mapped are not representative of all priority areas.



Map Creation Date: February 19, 2021  
 For more information, contact:  
 Juanita Starr, Director  
 Biigtong Nishnaabeg  
 Oilways of the Pic River First Nation  
 Heron Bay, Ontario P0T 1R0  
 P: (807) 229-8900 Ext 2



Map layout by David Carruthers  
 Framework: Atlas of Canada 1M  
 Projection: UTM Zone 16N, NAD83

# Generation PGM Project Boundary and the Bigligong Nishnaabeg First Nation Aboriginal Title Area

 Generation PGM Project Boundary (MLAS, MENDM Changed 2017)

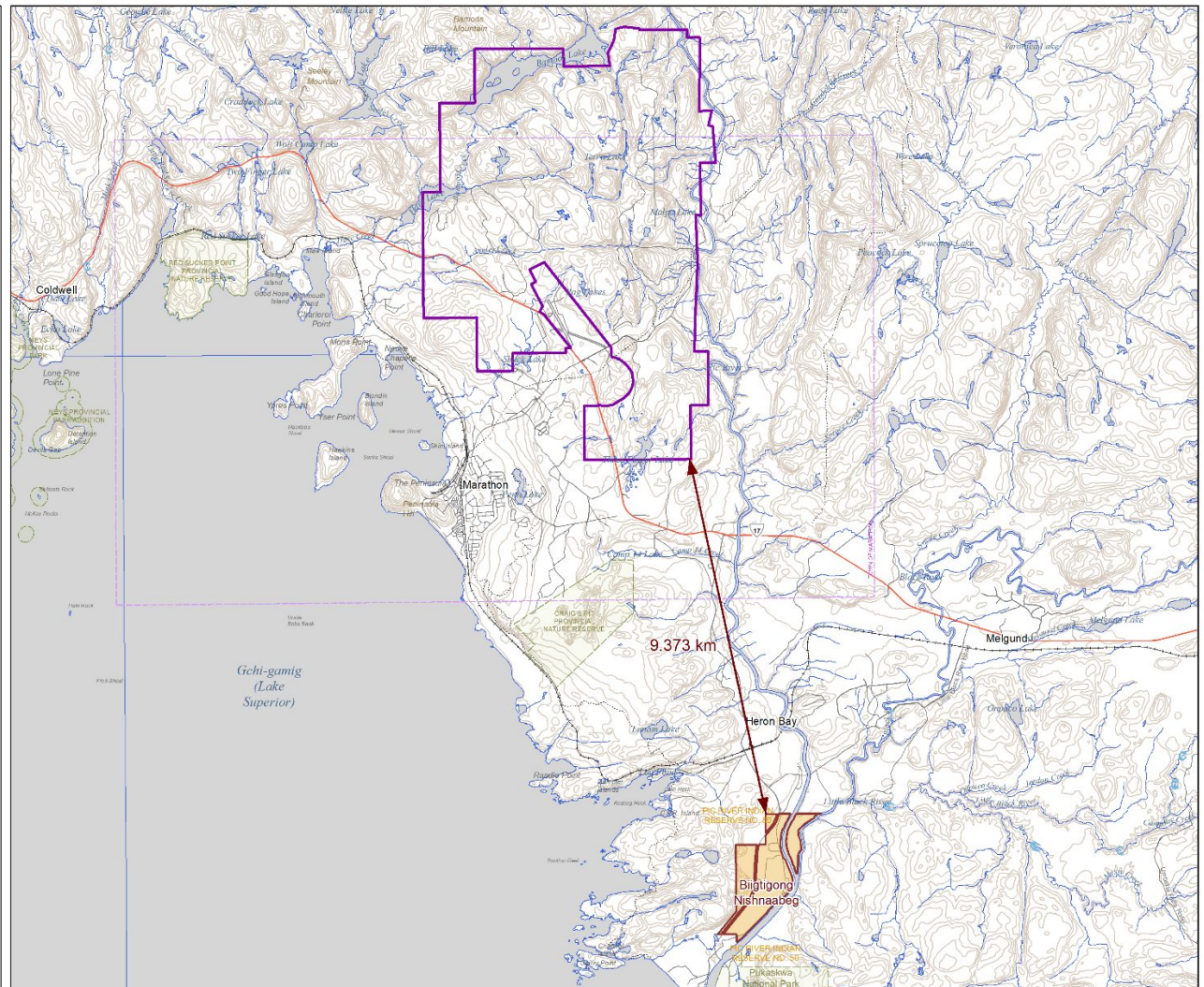
*Confidential - not for circulation. Areas mapped are for discussion purposes only. Without prejudice to Aboriginal Rights and Title, including Title case and negotiations with the Crown. Areas mapped are not representative of all priority areas.*



Map Creation Date: March 30, 2022  
 For more information, contact:  
 Juanita Starr, Director  
 Bigligong Nishnaabeg  
 Ojibways of the Pic River First Nation  
 Heron Bay, Ontario P0T 1R0  
 P: (807) 229-8900 Ext 2

0 1 2 3 4  
 Kilometres



Map layout by David Carruthers  
 Framework: Atlas of Canada 1M  
 Projection: UTM Zone 16N, NAD83



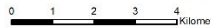

# Generation PGM Project Boundary and the Biigtigong Nishnaabeg First Nation Aboriginal Title Area

- Generation PGM Project Boundary (MLAS, MENDM Changed 2017)
- Biigtig Ziibii (the Pic River)

*Confidential - not for circulation. Areas mapped are for discussion purposes only. Without prejudice to Aboriginal Rights and Title, including Title case and negotiations with the Crown. Areas mapped are not representative of all priority areas.*

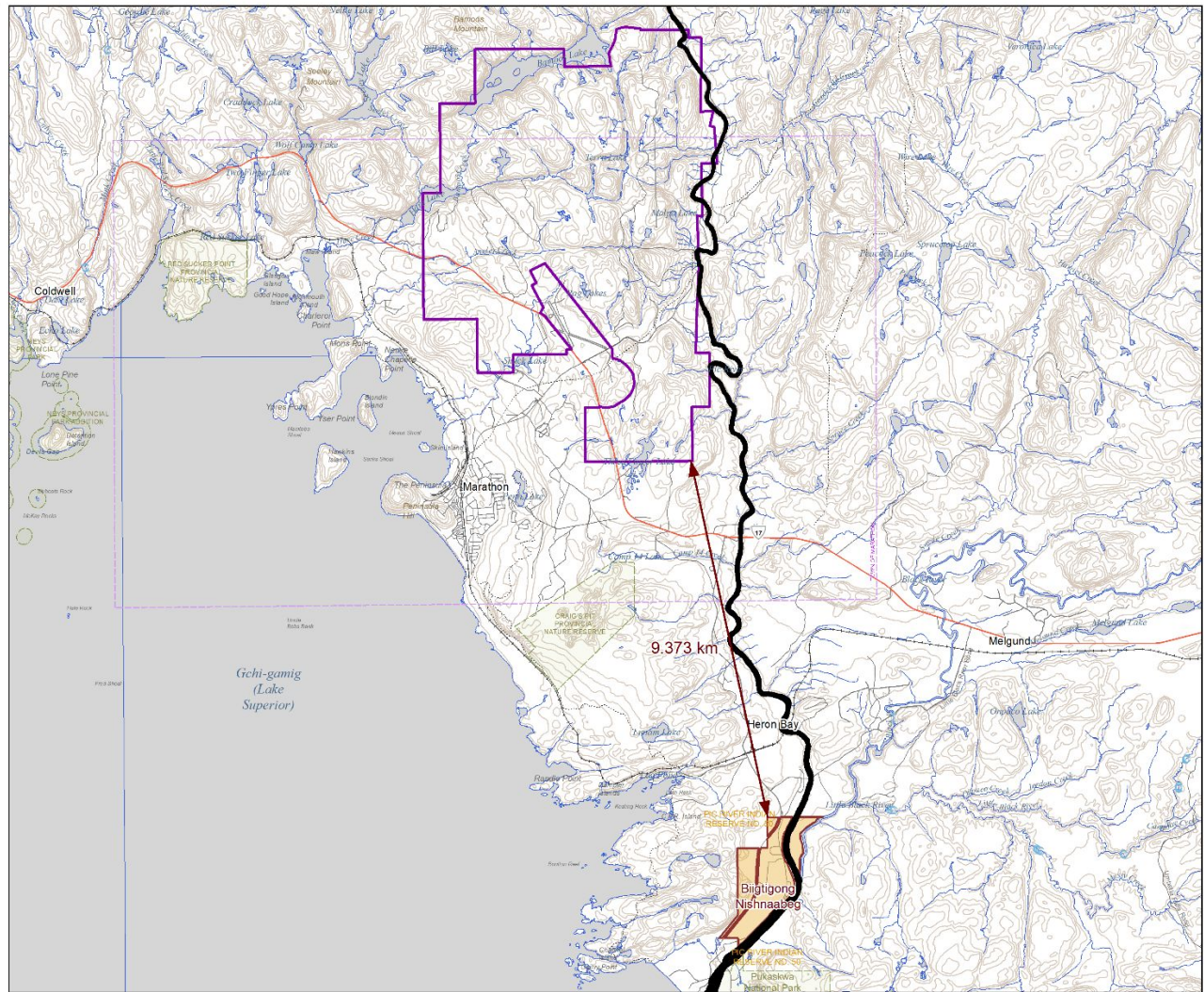



Map Creation Date: March 30, 2022  
 For more information, contact:  
 Juanita Starr, Director  
 Biigtigong Nishnaabeg  
 Ojibways of the Pic River First Nation  
 Heron Bay, Ontario P0T 1R0  
 P: (807) 229-8900 Ext 2

1:100,000

Map layout by David Carruthers  
 Framework: Atlas of Canada 1M  
 Projection: UTM Zone 16N, NAD83





Download Name: Generation PGM and the Biigtigong Nishnaabeg First Nation Aboriginal Title Area - Zoom Pic River - March 30, 2022

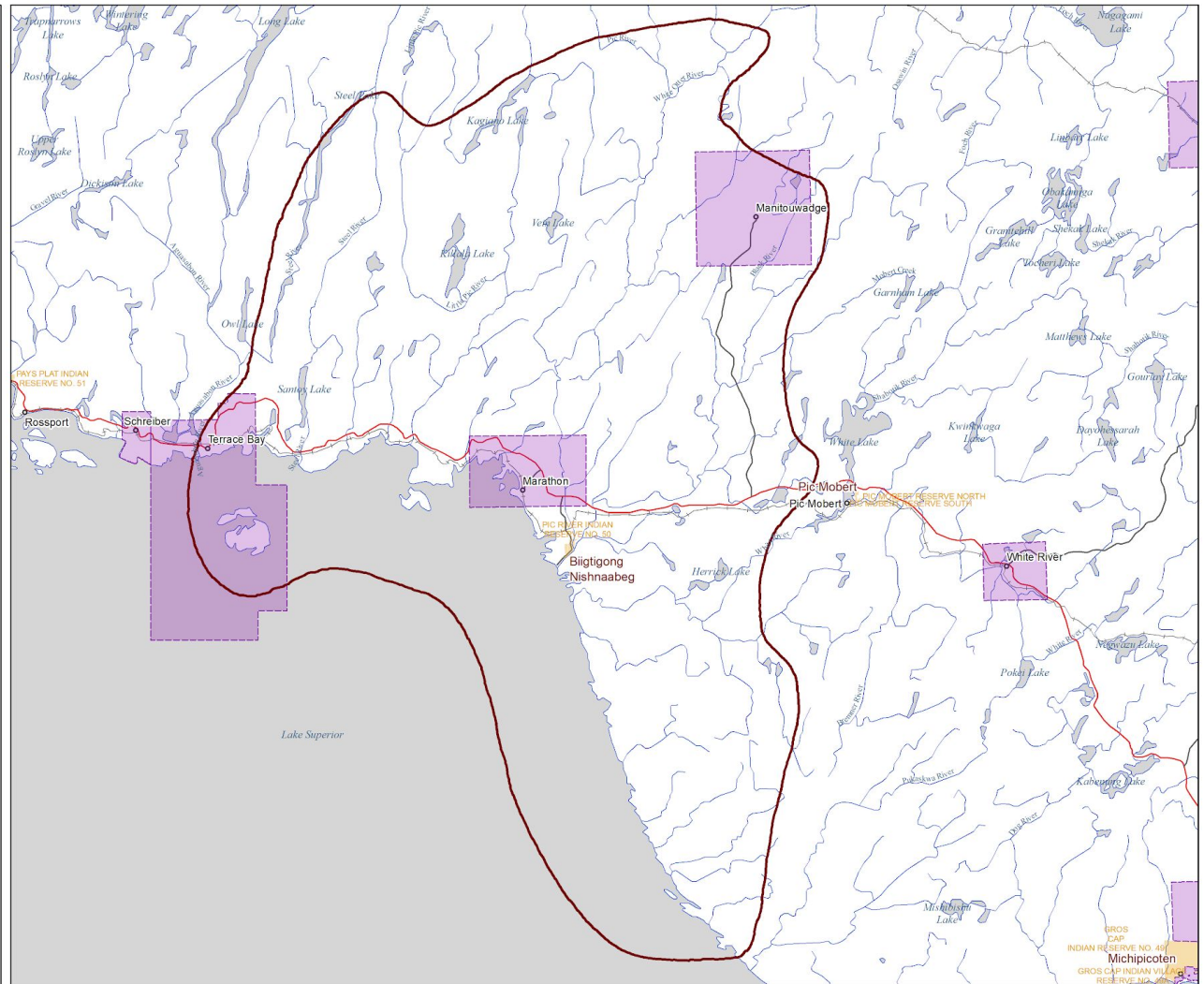
# **Land Use and Alienations - Context**



# Biigtigong Nishnaabeg First Nation Alienations

## Municipalities

-  Biigtigong Nishnaabeg Aboriginal Title Claim Area
-  Municipal Boundaries



*Confidential - not for circulation. Areas mapped are for discussion purposes only. Without prejudice to Aboriginal Rights and Title, including Title case and negotiations with the Crown. Areas mapped are not representative of all priority areas.*



Map Creation Date: February 22, 2021  
 For more information, contact:  
 Juamta Starr, Director  
 Biigtigong Nishnaabeg  
 Ojibways of the Pic River First Nation  
 Heron Bay, Ontario P0T 1R0  
 P: (807) 229-8900 Ext 2

0 7.5 15 22.5 30  
 Kilometres

Map layout by David Carruthers  
 Framework: Atlas of Canada 1M  
 Projection: UTM Zone 16N, NAD83



# Biigtigong Nishnaabeg First Nation Alienations

Municipalities  
Federal Parks

-  Biigtigong Nishnaabeg Aboriginal Title Claim Area
-  Municipal Boundaries
-  Federal Parks

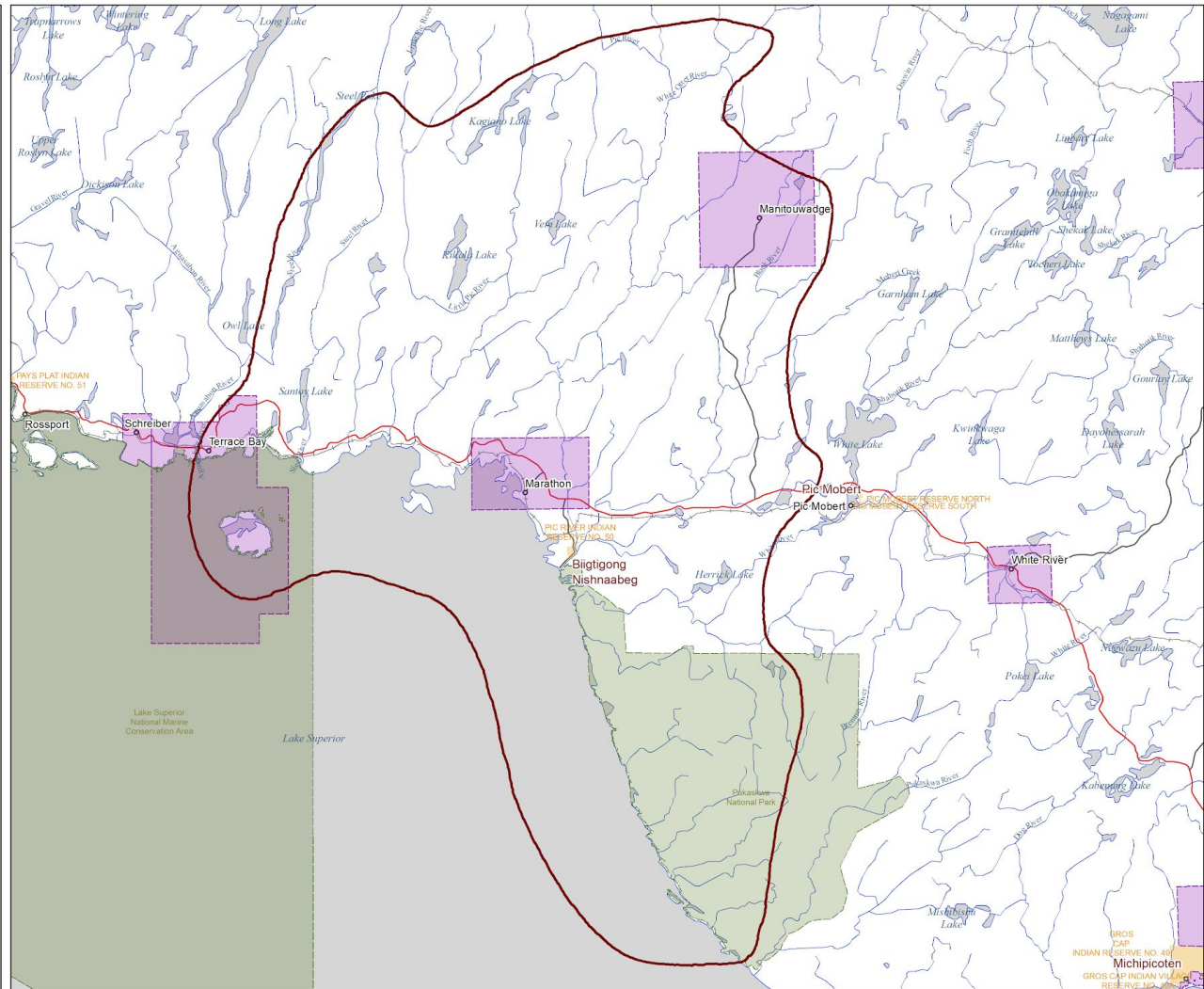
*Confidential - not for circulation. Areas mapped are for discussion purposes only. Without prejudice to Aboriginal Rights and Title, including Title case and negotiations with the Crown. Areas mapped are not representative of all priority areas.*



Map Creation Date: February 22, 2021  
 For more information, contact:  
 Juamba Starr, Director  
 Biigtigong Nishnaabeg  
 Ojibways of the Pic River First Nation  
 Heron Bay, Ontario P0T 1R0  
 P: (807) 229-8900 Ext 2

0 7.5 15 22.5 30  
Kilometres

Map layout by David Carruthers  
 Framework: Atlas of Canada 1M  
 Projection: UTM Zone 16N, NAD83



# Biigtigong Nishnaabeg First Nation Alienations

Municipalities  
Federal Parks  
Provincial Parks

-  Biigtigong Nishnaabeg Aboriginal Title Claim Area
-  Municipal Boundaries
-  Federal Parks
-  Provincial Parks

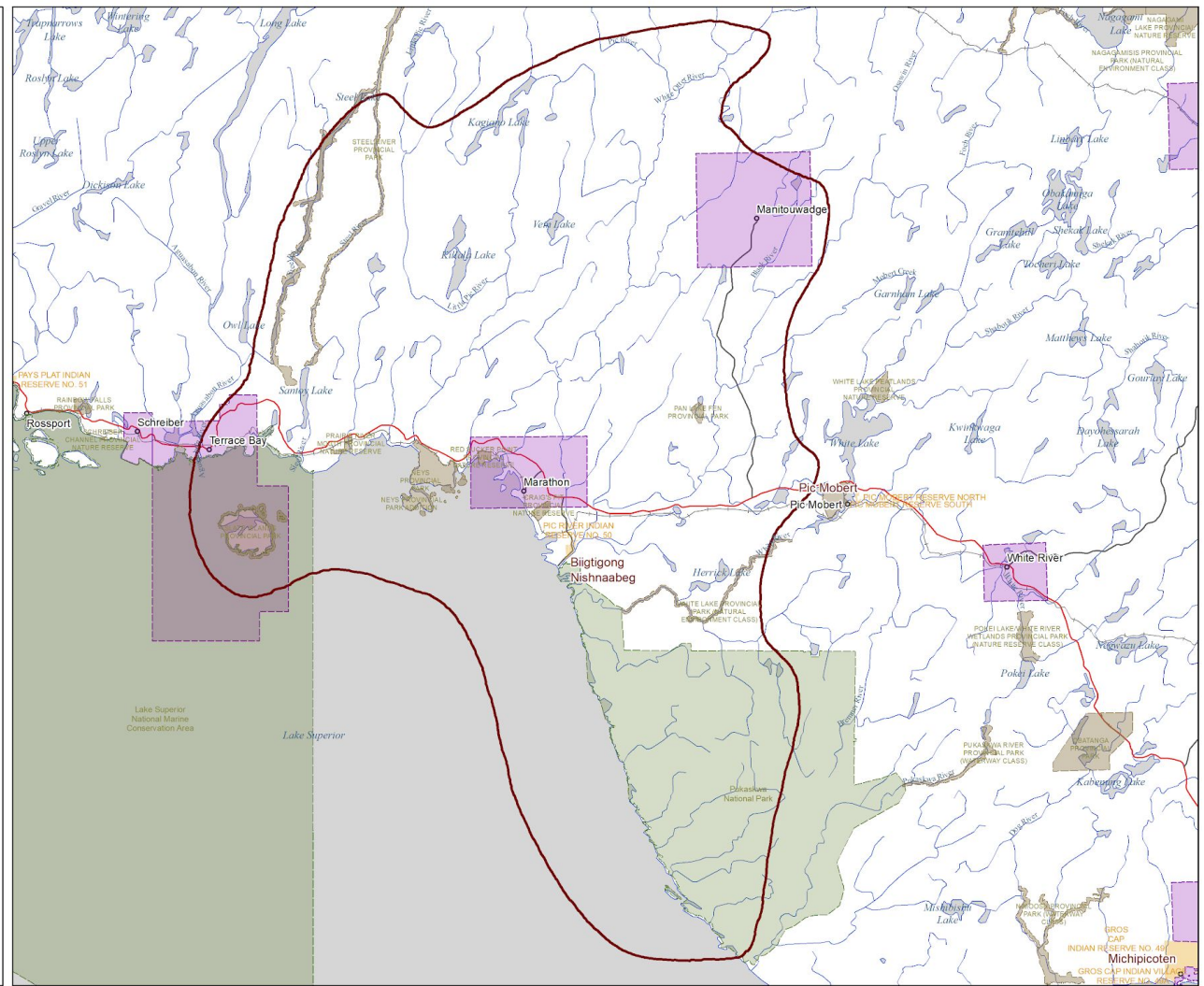
*Confidential - not for circulation. Areas mapped are for discussion purposes only. Without prejudice to Aboriginal Rights and Title, including Title case and negotiations with the Crown. Areas mapped are not representative of all priority areas.*



Map Creation Date: February 22, 2021  
 For more information, contact:  
 Juanna Starr, Director  
 Biigtigong Nishnaabeg  
 Ojibways of the Pic River First Nation  
 Heron Bay, Ontario P0T 1R0  
 P: (807) 229-8900 Ext 2



Map layout by David Carruthers  
 Framework: Atlas of Canada 1M  
 Projection: UTM Zone 16N, NAD83



# Biigtigong Nishnaabeg First Nation Alienations

- Municipalities
- Federal Parks
- Provincial Parks
- Conservation Reserves

-  Biigtigong Nishnaabeg Aboriginal Title Claim Area
-  Municipal Boundaries
-  Federal Parks
-  Provincial Parks
-  Conservation Reserves

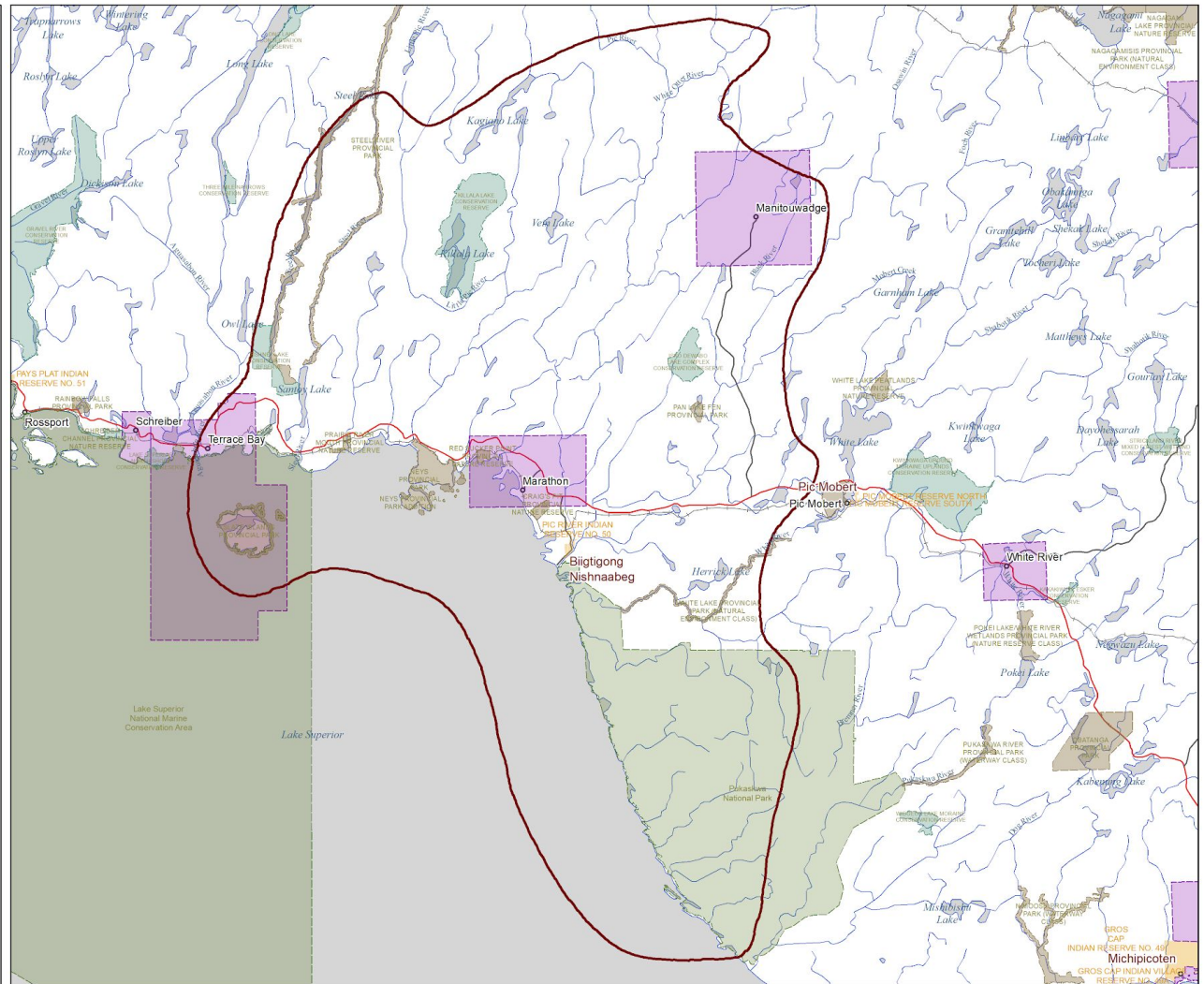
*Confidential - not for circulation. Areas mapped are for discussion purposes only. Without prejudice to Aboriginal Rights and Title, including Title case and negotiations with the Crown. Areas mapped are not representative of all priority areas.*



Map Creation Date: February 22, 2021  
 For more information, contact:  
 Juamba Starr, Director  
 Biigtigong Nishnaabeg  
 Ojibways of the Pic River First Nation  
 Heron Bay, Ontario P0T 1R0  
 P: (807) 229-8900 Ext 2

0 7.5 15 22.5 30  
 Kilometres

Map layout by David Carruthers  
 Framework: Atlas of Canada 1M  
 Projection: UTM Zone 16N, NAD83



# Biigtigong Nishnaabeg First Nation Alienations

- Municipalities
- Federal Parks
- Provincial Parks
- Conservation Reserves
- Patented Lands

-  Biigtigong Nishnaabeg Aboriginal Title Claim Area
-  Municipal Boundaries
-  Federal Parks
-  Provincial Parks
-  Conservation Reserves
-  Patented Lands

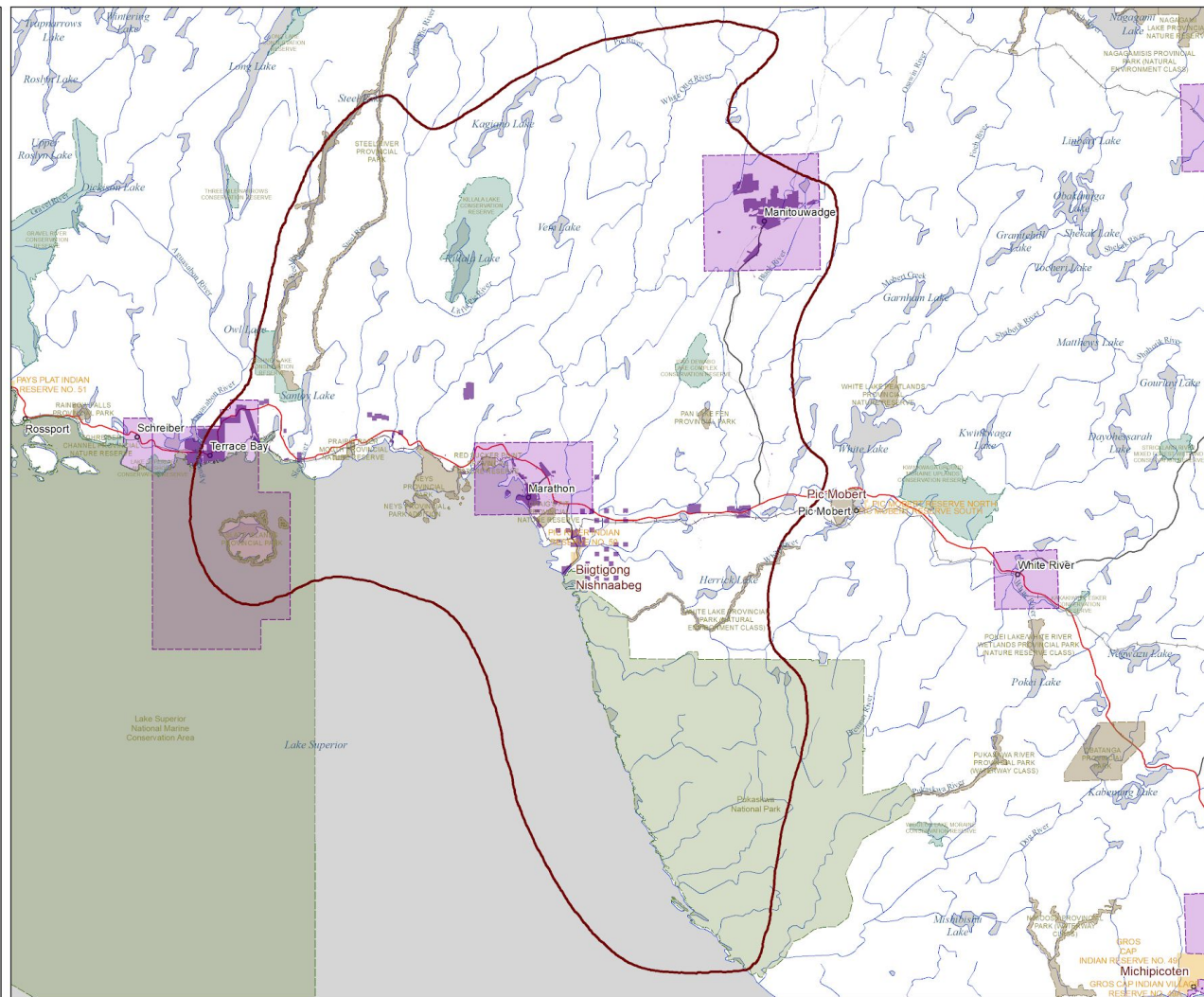
Confidential - not for circulation. Areas mapped are for discussion purposes only. Without prejudice to Aboriginal Rights and Title, including Title case and negotiations with the Crown. Areas mapped are not representative of all priority areas.



Map Creation Date: February 22, 2021  
 For more information, contact:  
 Juamba Starr, Director  
 Biigtigong Nishnaabeg  
 Ojibways of the Pic River First Nation  
 Heron Bay, Ontario P0T 1R0  
 P: (807) 229-8900 Ext 2



Map layout by David Carruthers  
 Framework: Atlas of Canada 1M  
 Projection: UTM Zone 16N, NAD83



# Biigtigong Nishnaabeg First Nation Alienations

- Municipalities
- Federal Parks
- Provincial Parks
- Conservation Reserves
- Patented Lands
- Mining Leases

-  Biigtigong Nishnaabeg Aboriginal Title Claim Area
-  Municipal Boundaries
-  Federal Parks
-  Provincial Parks
-  Conservation Reserves
-  Patented Lands
-  Mining Leases

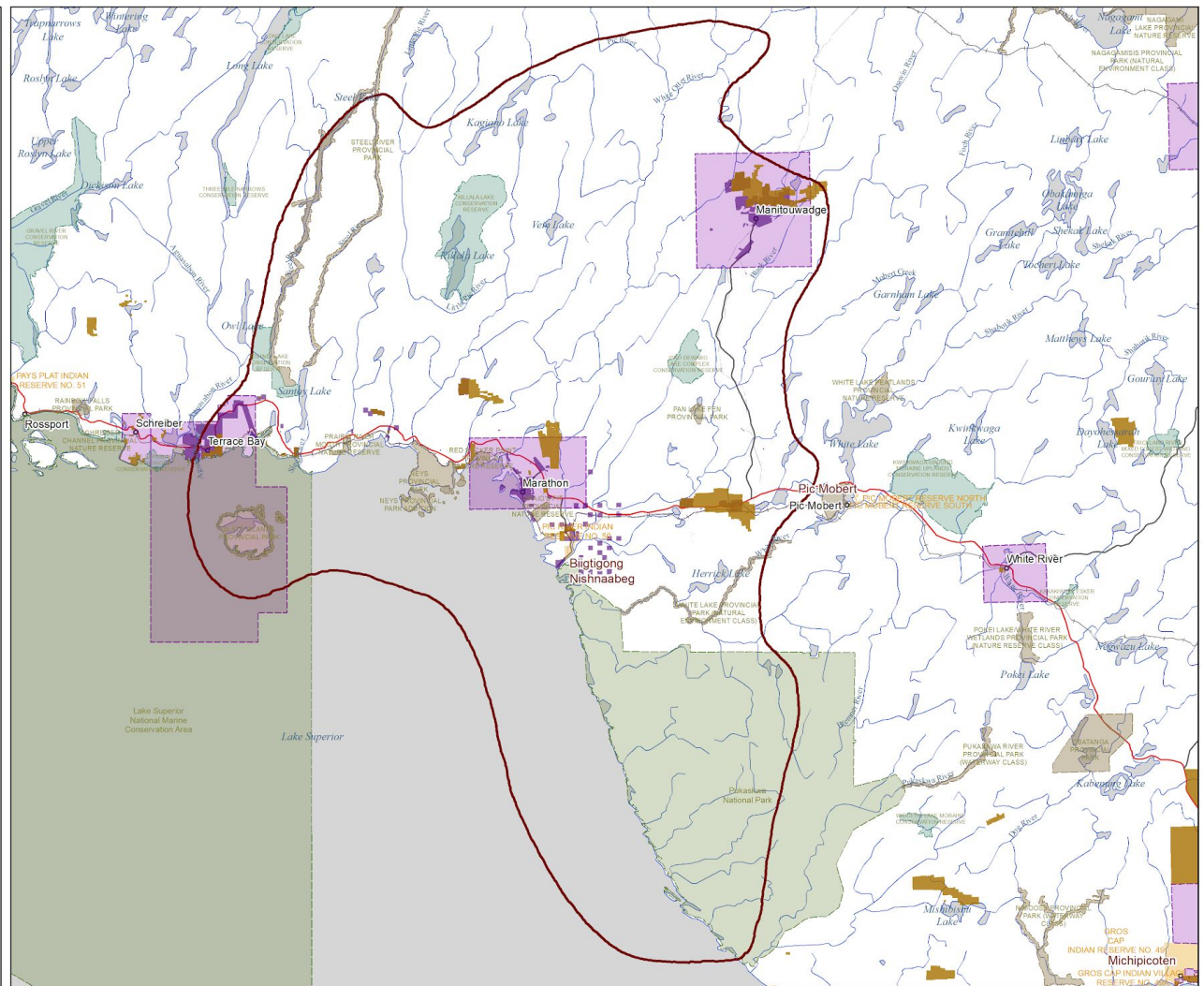
*Confidential - not for circulation. Areas mapped are for discussion purposes only. Without prejudice to Aboriginal Rights and Title, including Title case and negotiations with the Crown. Areas mapped are not representative of all priority areas.*



Map Creation Date: February 22, 2021  
 For more information, contact:  
 Juamba Starr, Director  
 Biigtigong Nishnaabeg  
 Ojibways of the Pic River First Nation  
 Heron Bay, Ontario P0T 1R0  
 P: (807) 229-8900 Ext 2



Map layout by David Carruthers  
 Framework: Atlas of Canada 1M  
 Projection: UTM Zone 16N, NAD83







# Biigtigong Nishnaabeg First Nation Alienations



- Municipalities
- Federal Parks
- Provincial Parks
- Conservation Reserves
- Patented Lands
- Mining Leases
- Past Mining Claims
- Active Mining Claims

-  Biigtigong Nishnaabeg Aboriginal Title Claim Area
-  Municipal Boundaries
-  Federal Parks
-  Provincial Parks
-  Conservation Reserves
-  Patented Lands
-  Mining Leases
-  Past Mining Claims
-  Activating Mining Claims

Confidential - not for circulation. Areas mapped are for discussion purposes only. Without prejudice to Aboriginal Rights and Title, including Title case and negotiations with the Crown. Areas mapped are not representative of all priority areas.

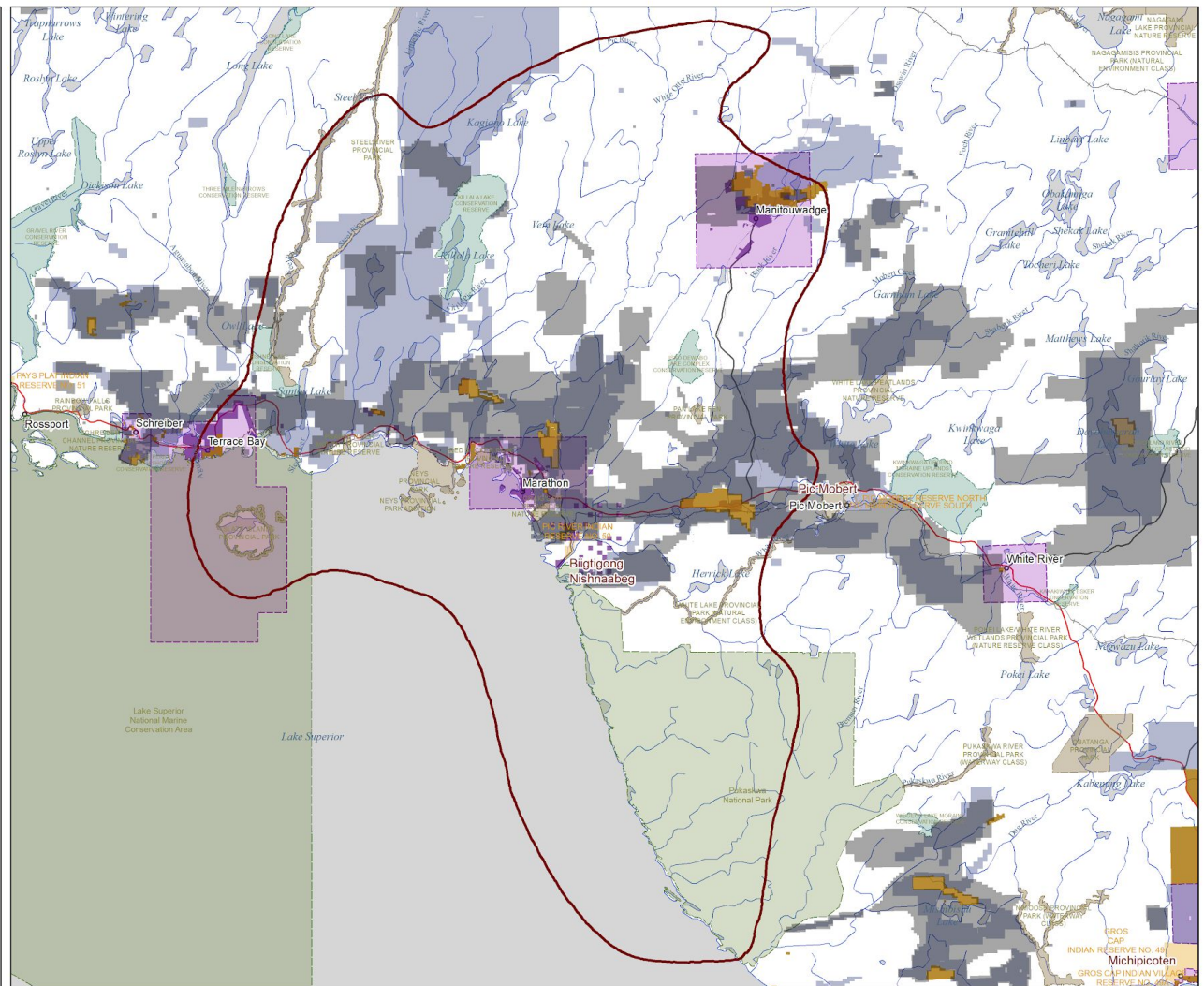



Map Creation Date: February 22, 2021  
 For more information, contact:  
 Juamba Starr, Director  
 Biigtigong Nishnaabeg  
 Ojibways of the Pic River First Nation  
 Heron Bay, Ontario P0T 1R0  
 P: (807) 229-8900 Ext 2

1:850,000

Map layout by David Carruthers  
 Framework: Atlas of Canada 1M  
 Projection: UTM Zone 16N, NAD83





# Bigtong Nishnaabeg First Nation Alienations


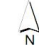
- Municipalities
- Federal Parks
- Provincial Parks
- Conservation Reserves
- Patented Lands
- Mining Leases
- Past Mining Claims
- Active Mining Claims
- Past Forest Depletions

-  Bigtong Nishnaabeg Aboriginal Title Claim Area
-  Municipal Boundaries
-  Federal Parks
-  Provincial Parks
-  Conservation Reserves
-  Patented Lands
-  Mining Leases
-  Past Mining Claims
-  Active Mining Claims
-  Past Forest Depletions (1980-2020)

Confidential - not for circulation. Areas mapped are for discussion purposes only. Without prejudice to Aboriginal Rights and Title, including Title case and negotiations with the Crown. Areas mapped are not representative of all priority areas.

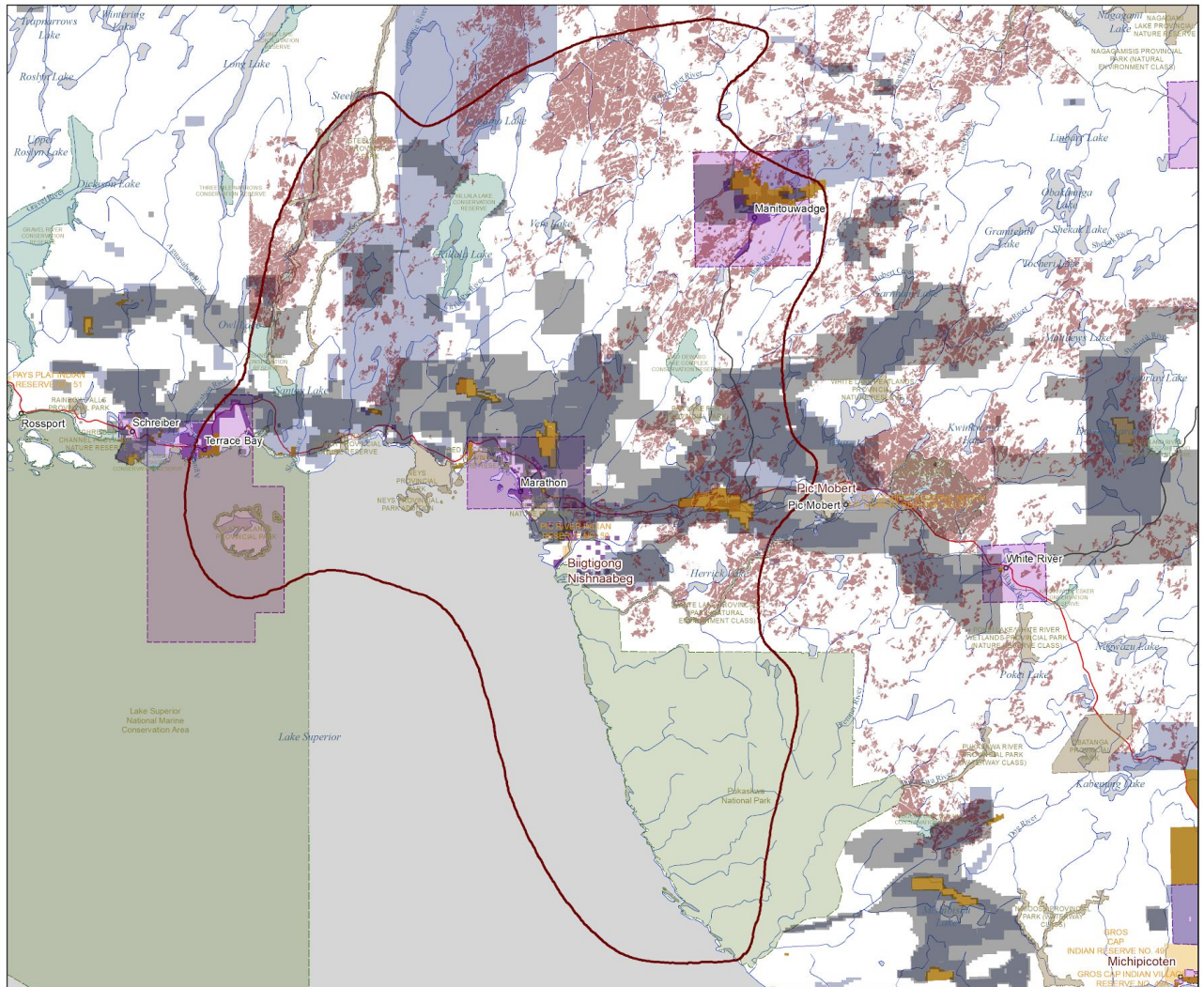



Map Creation Date: February 22, 2021  
 For more information, contact:  
 Juamba Starr, Director  
 Bigtong Nishnaabeg  
 Ojibways of the Pic River First Nation  
 Heron Bay, Ontario P0T 1R0  
 P: (807) 229-8900 Ext 2

1:850,000

Map layout by David Carruthers  
 Framework: Atlas of Canada 1M  
 Projection: UTM Zone 16N, NAD83




# Biigtigong Nishnaabeg First Nation Alienations


- Municipalities
- Federal Parks
- Provincial Parks
- Conservation Reserves
- Patented Lands
- Mining Leases
- Past Mining Claims
- Active Mining Claims
- Past Forest Depletions
- Planned Forest Depletions

-  Biigtigong Nishnaabeg Aboriginal Title Claim Area
-  Municipal Boundaries
-  Federal Parks
-  Provincial Parks
-  Conservation Reserves
-  Patented Lands
-  Mining Leases
-  Past Mining Claims
-  Activating Mining Claims
-  Past Forest Depletions (1980-2020)
-  Planned Forest Depletions (<10 years)


Confidential - not for circulation. Areas mapped are for discussion purposes only. Without prejudice to Aboriginal Rights and Title, including Title case and negotiations with the Crown. Areas mapped are not representative of all priority areas.




Map Creation Date: February 22, 2021  
For more information, contact:  
Juamta Starr, Director  
Biigtigong Nishnaabeg  
Ojibways of the Pic River First Nation  
Heron Bay, Ontario P0T 1R0  
P: (807) 229-8900 Ext 2



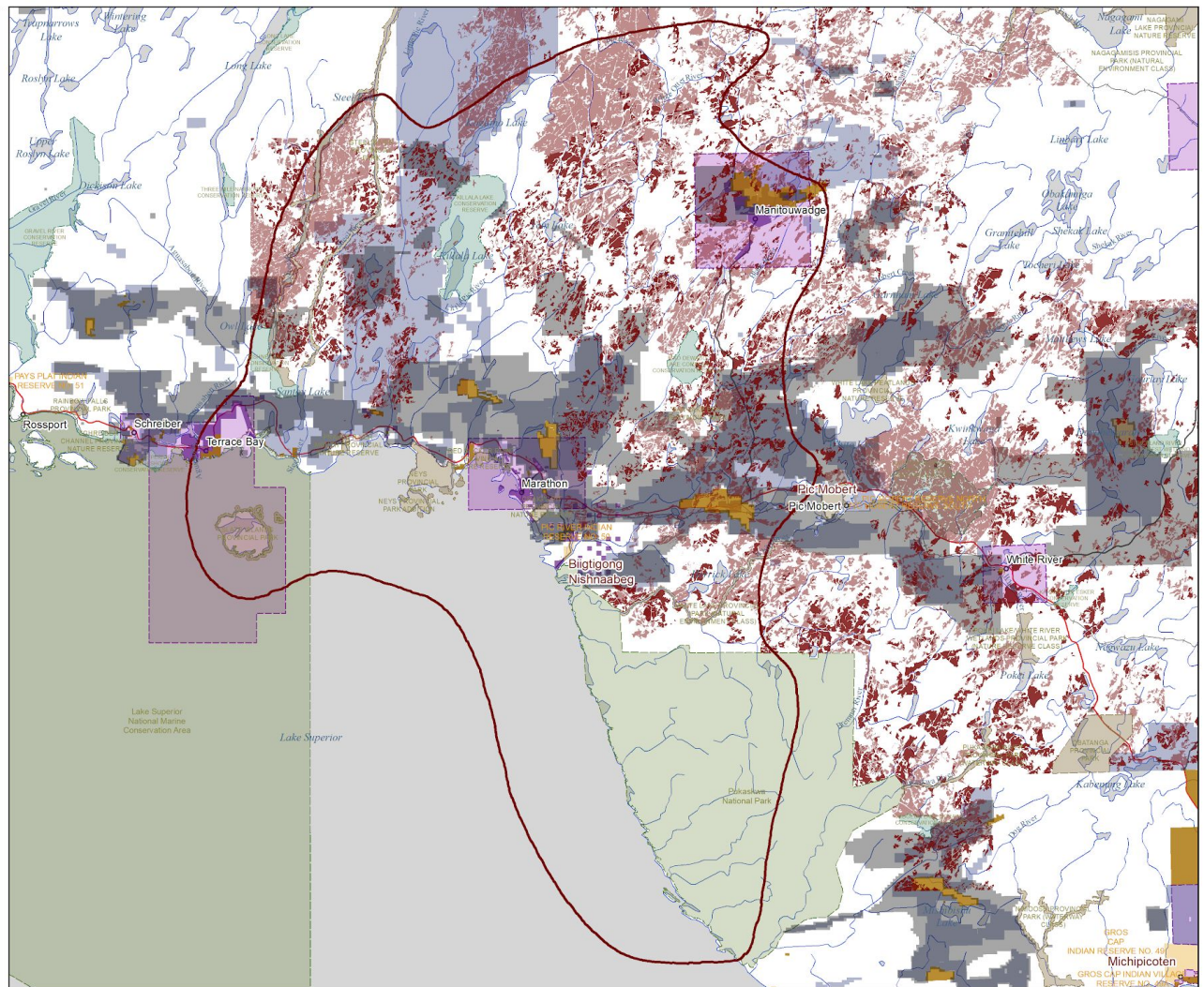
Map layout by David Carruthers  
Framework: Atlas of Canada 1M  
Projection: UTM Zone 16N, NAD83



0 7.5 15 22.5 30  
Kilometres



N  
1:650,000



# Biigtigong Nishnaabeg First Nation Alienations

- Municipalities
- Federal Parks
- Provincial Parks
- Conservation Reserves
- Patented Lands
- Mining Leases
- Past Mining Claims
- Active Mining Claims
- Past Forest Depletions
- Planned Forest Depletions
- Forest Access Roads

-  Biigtigong Nishnaabeg Aboriginal Title Claim Area
-  Municipal Boundaries
-  Federal Parks
-  Provincial Parks
-  Conservation Reserves
-  Patented Lands
-  Mining Leases
-  Past Mining Claims
-  Active Mining Claims
-  Past Forest Depletions (1980-2020)
-  Planned Forest Depletions (<10 years)
-  Forest Access Roads

*Confidential - not for circulation. Areas mapped are for discussion purposes only. Without prejudice to Aboriginal Rights and Title, including Title case and negotiations with the Crown. Areas mapped are not representative of all priority areas.*



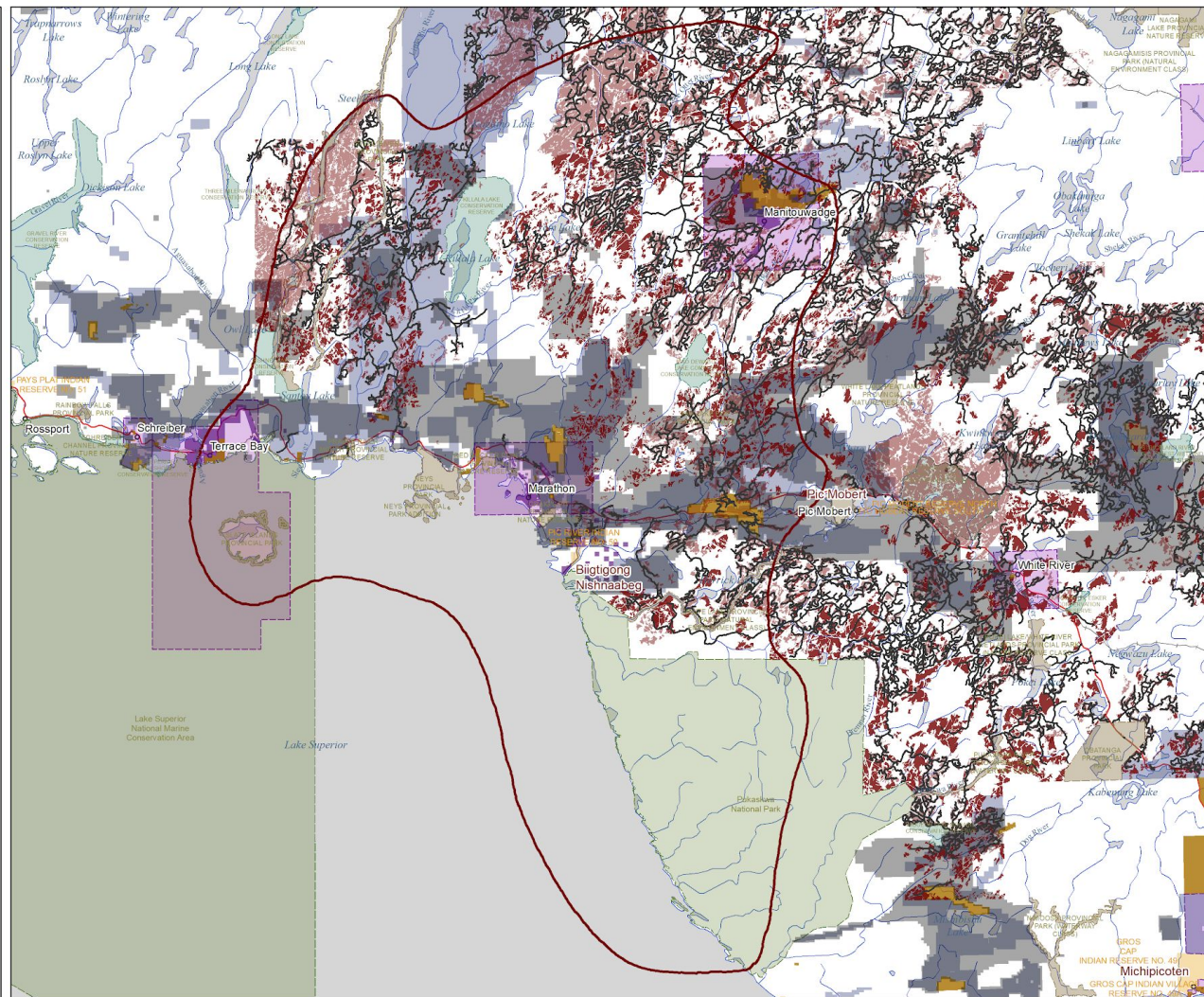
Map Creation Date: February 22, 2021  
 For more information, contact:  
 Juamba Starr, Director  
 Biigtigong Nishnaabeg  
 Ojibways of the Pic River First Nation  
 Heron Bay, Ontario P0T 1R0  
 P: (807) 229-8900 Ext 2



Map layout by David Carruthers  
 Framework: Atlas of Canada 1M  
 Projection: UTM Zone 16N, NAD83



1:850,000



# Biigtigong Nishnaabeg First Nation Alienations

- Municipalities
- Federal Parks
- Provincial Parks
- Conservation Reserves
- Patented Lands
- Mining Leases
- Past Mining Claims
- Active Mining Claims
- Past Forest Depletions
- Planned Forest Depletions
- Forest Access Roads
- Aggregate Pits

-  Biigtigong Nishnaabeg Aboriginal Title Claim Area
-  Municipal Boundaries
-  Federal Parks
-  Provincial Parks
-  Conservation Reserves
-  Patented Lands
-  Mining Leases
-  Past Mining Claims
-  Active Mining Claims
-  Past Forest Depletions (1980-2020)
-  Planned Forest Depletions (<10 years)
-  Forest Access
-  Aggregate Pits

*Confidential - not for circulation. Areas mapped are for discussion purposes only. Without prejudice to Aboriginal Rights and Title, including Title case and negotiations with the Crown. Areas mapped are not representative of all priority areas.*



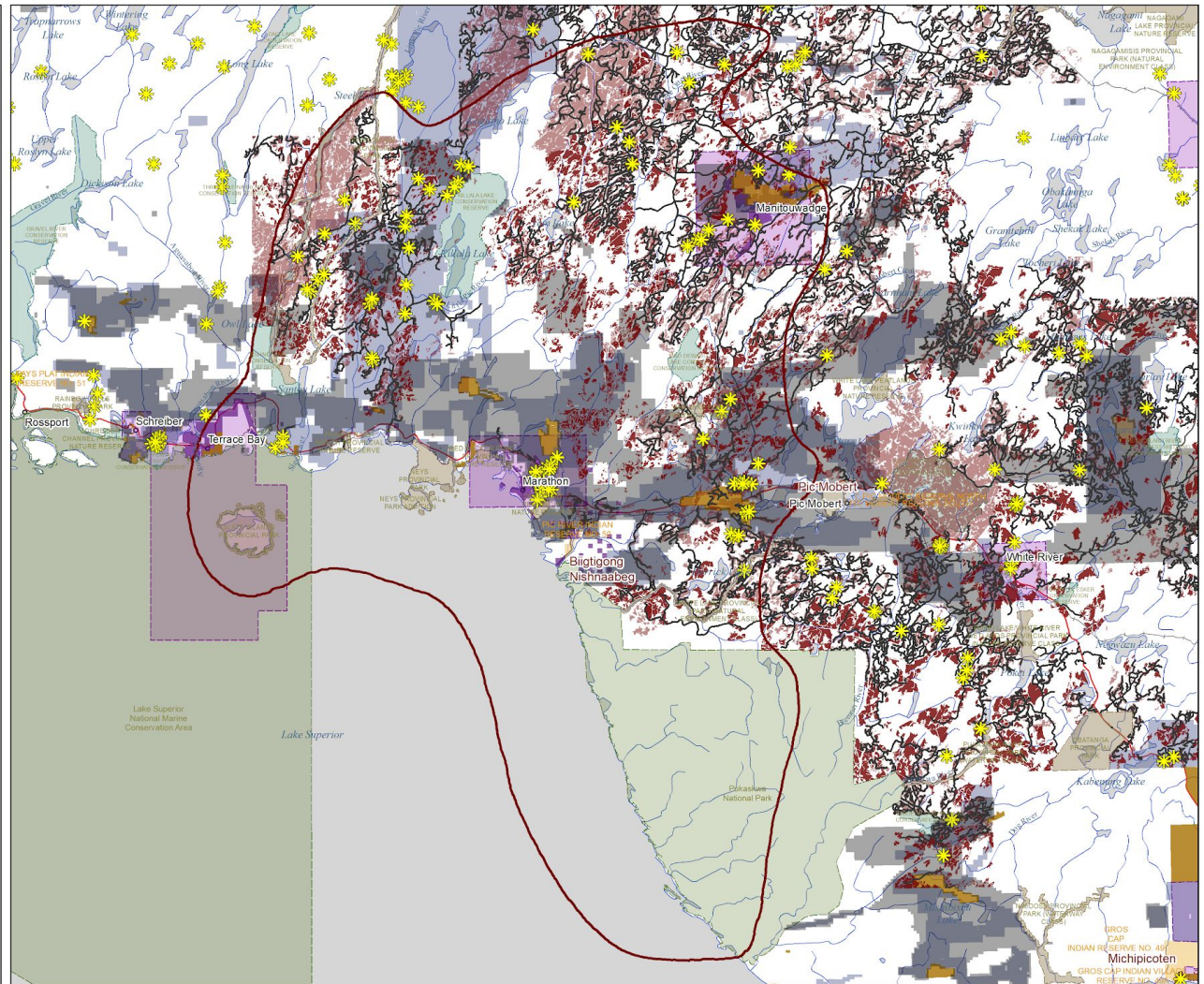
Map Creation Date: February 22, 2021  
 For more information, contact:  
 Juamta Starr, Director  
 Biigtigong Nishnaabeg  
 Ojibways of the Pic River First Nation  
 Heron Bay, Ontario P0T 1R0  
 P: (807) 229-8900 Ext 2



Map layout by David Carruthers  
 Framework: Atlas of Canada 1M  
 Projection: UTM Zone 16N, NAD83



1:850,000





# Biigtigong Nishnaabeg First Nation Alienations



- Municipalities
- Federal Parks
- Provincial Parks
- Conservation Reserves
- Patented Lands
- Mining Leases
- Past Mining Claims
- Active Mining Claims
- Past Forest Depletions
- Planned Forest Depletions
- Forest Access Roads
- Aggregate Pits
- Policies - Wildlife Management

-  Biigtigong Nishnaabeg Aboriginal Title Claim Area
-  Municipal Boundaries
-  Federal Parks
-  Provincial Parks
-  Conservation Reserves
-  Patented Lands
-  Mining Leases
-  Past Mining Claims
-  Activating Mining Claims
-  Past Forest Depletions (1980-2020)
-  Planned Forest Depletions (<10 years)
-  Forest Access Roads
-  Aggregate Pits
-  Wildlife Management Unit 21A

*Confidential - not for circulation. Areas mapped are for discussion purposes only. Without prejudice to Aboriginal Rights and Title, including Title case and negotiations with the Crown. Areas mapped are not representative of all priority areas.*

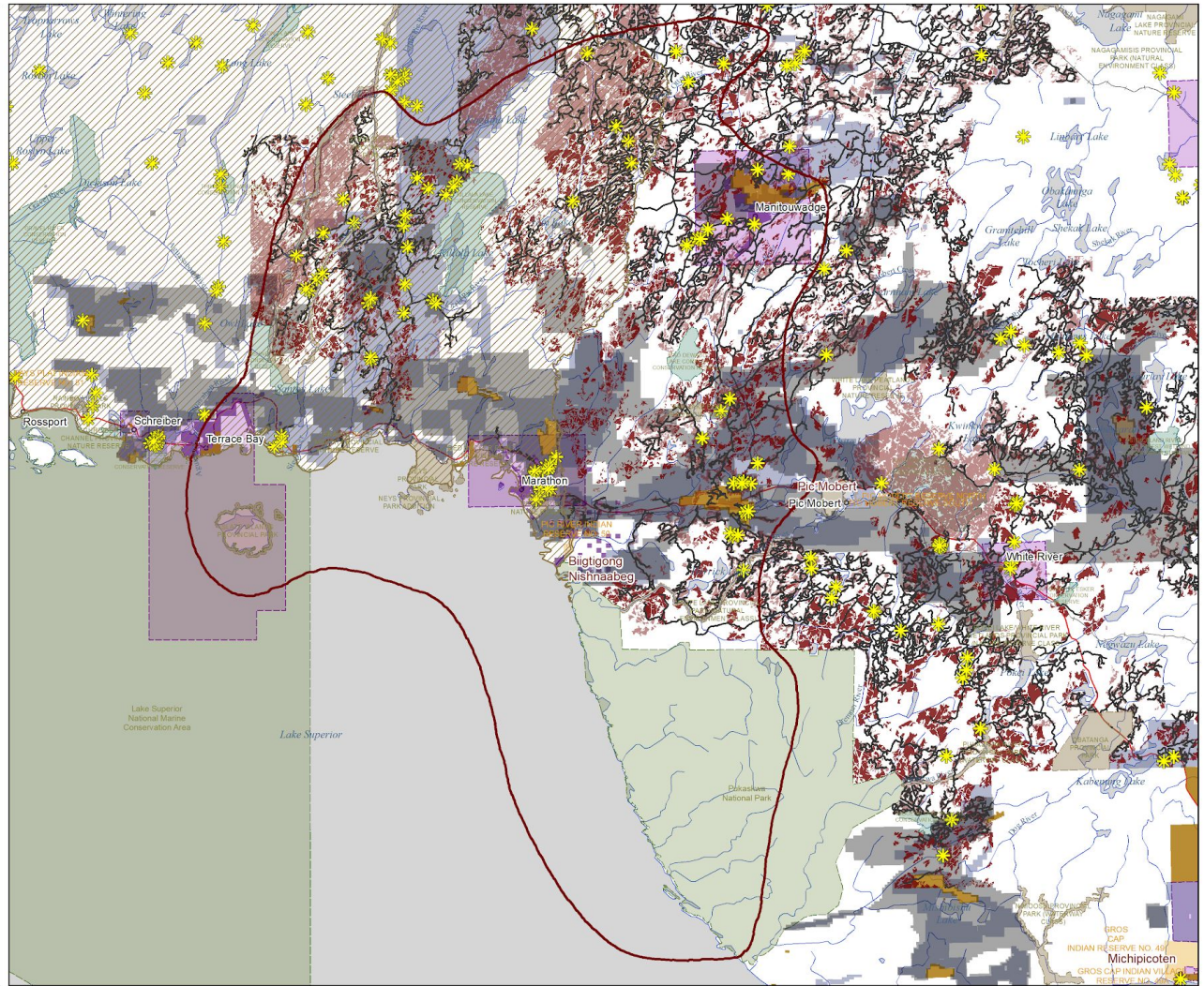



Map Creation Date: February 22, 2021  
 For more information, contact:  
 Juamba Starr, Director  
 Biigtigong Nishnaabeg  
 Ojibways of the Pic River First Nation  
 Heron Bay, Ontario P0T 1R0  
 P: (807) 229-8900 Ext 2

1:850,000

Map layout by David Carruthers  
 Framework: Atlas of Canada 1M  
 Projection: UTM Zone 16N, NAD83



Baitfish licenses, licenses of occupation, easements, right of ways, land use permits, leases, outfitters / guides / tourism operations, silvicultural activities, caribou management strategies, Crown Land Use Atlas, Snowmobile Association and trails; windpower licenses; transmission corridors; MOT work; fisheries management policies....

# **Cultural Connections to the Land - Context**

In 1993, 2005, 2011 and 2012 we completed use and occupancy map survey studies with our harvesters.

We captured over 12,000 cultural features on how the land was being used, within living memory.

The data was captured in a way to produce court-ready documentation of use and occupancy.

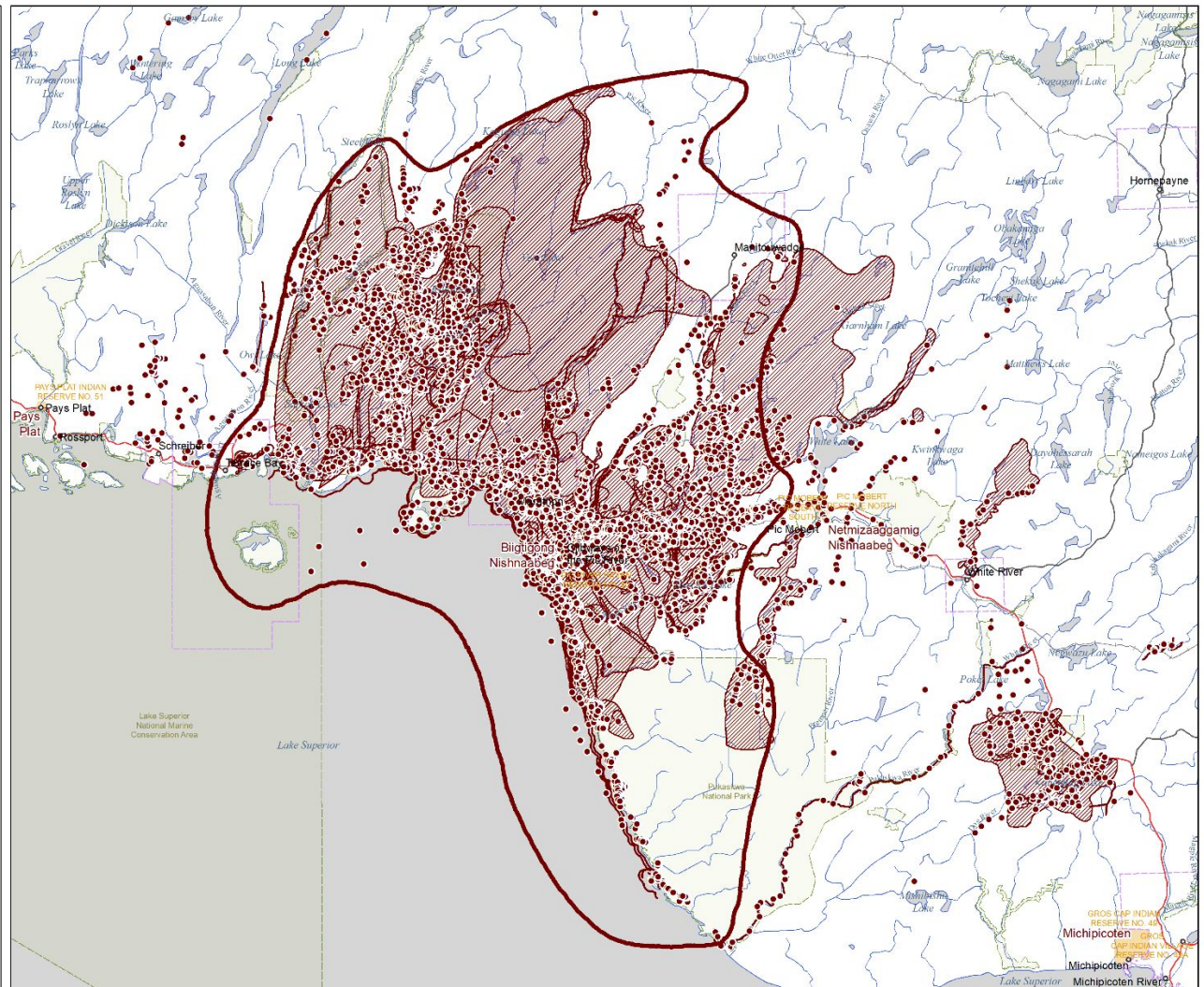
Theme	Feature	Count	Theme	Feature	Count	Theme	Feature	Count
Big Game		1,659	Fish		3,652	Fixed Cultural Sites		657
	Bear	20		Fish net	274		Birth Site	19
	Caribou	2		Fish rod, hook, line, trolling	246		Burial ground	6
	Caribou (Woodland)	10		Fish snared	6		Burial Site	13
	Deer	3		Fish spawn site	4		Cabin	114
	Deer (White-Tailed)	94		Fish speared	8		Cabin, tent cabin, main tent site	197
	Moose	1,530		Fish trap	2		Ceremony Site	53
Birds		2,477		Herring	18		Cermony Plant	24
	Canada Goose	136		Lake Trout	438		Company Cabin	24
	Ducks	88		Ling (Burbot)	15		Death Site	12
	Ducks, geese	36		Northern Pike	260		Medicinal plant	2
	Eggs	36		Other Fish	46		Medicine Plant	84
	Geese	76		Pickeral (Walleye)	838		Prospecting Camp	5
	Gulls	4		Rainbow Trout	267		Sacred Area	8
	Loon	3		Salmon	80		Tent-Cabin (Tent-frame)	96
	Mallard	263		Smelt	218		Other Cultural Sites	191
	Other Bird	3		Speckled Trout	637		Ceremonial Animal	4
	Other Duck	34		Sturgeon	108		Other Code	137
	Other Goose	10		Sturgeon speared	2		Other Cultural Site	4
	Partridge	196		Sucker	23		Toponym	46
	Ruffed Grouse	1,373		Whitefish	96	Other Mammal		4
	Spruce Grouse	219		Yellow Perch	66		Porcupine	7
Earth Resources		25	Overnight Sites		473		Rabbit	765
	Firewood	185		Birchbark Wigwam	1		Shot Beaver	159
	Food Plants	7		Boat (stayed overnight)	11		Shot Muskrat	59
	Logs (for cabins)	10		Lean-to	25		Trapping	1,121
	Other Berries	31		Other Overnight	136		Trapped Beaver	975
	Other Plant Or Wood	19		Tent	300		Trapped Muskrat	146
	Specialty Wood	32		Plants and Earth Resources	505	Total		11,807
	Tobacco Plant	1		Blueberries	195		Line features	268
	Small Game	1,072					Area features	323
	Beaver shot	72				GRAND TOTAL		12,398
	Live foxes	6						

# Biigtong Nishnaabeg First Nation Exclusive Title Area and the Combined Use and Occupancy Data

All themes combined

## Combined Use and Occupancy Data

- Point Features
- Line Features
- ▨ Area Features
- ▭ Biigtong Exclusive Title Area



*Confidential - not for circulation. Areas mapped are for discussion purposes only. Without prejudice to Aboriginal Rights and Title, including Title case and negotiations with the Crown. Areas mapped are not representative of all priority areas.*



Map Creation Date: February 12, 2020  
 For more information, contact:  
 Juanita Starr, Director  
 Biigtong Nishnaabeg  
 Ojibways of the Pic River First Nation  
 Heron Bay, Ontario P0T 1R0  
 P: (807) 229-8900 Ext 2

0 8 16 24 32  
 Kilometres

Map layout by David Carruthers  
 Framework: Atlas of Canada 1M  
 Projector: UTM Zone 16N, NAD83





1:700,000

**Biigtigong Nishnaabeg First Nation  
Heatmap (density) of Use and  
Occupancy Data and Core Use Areas**

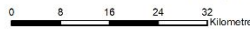
Density of UOM Data  
High : 0.5 features / ha  
Low


-  Biigtigong Exclusive Title
-  Biigtigong / Moberg DRAFT Exclusive Title Boundary
-  Forest Management Unit boundaries

*Confidential - not for circulation. Areas mapped are for discussion purposes only. Without prejudice to Aboriginal Rights and Title, including Title case and negotiations with the Crown. Areas mapped are not representative of all priority areas.*

Map Creation Date: March 20, 2021  
For more information, contact:  
Juanita Starr, Director  
Biigtigong Nishnaabeg  
Ojibways of the Pic River First Nation  
Heron Bay, Ontario P0T 1R0  
P: (807) 229-8900 Ext 2





N  
1:675,000

Map layout by David Carruthers  
Framework: Atlas of Canada 1M  
Projection: UTM Zone 16N, NAD83

Document Name - Heatmap of UOM Data - March 20, 2021

Michipicoten APINDIA  
GROUPE APINDIA  
INDIAN RESERVE NO 41  
Michipicoten

In 2019 we completed a travel route mapping survey with our harvesters.

We mapped 1,368 features, including 46,657 km of routes representing 13 different modes of travel, all for the purpose of harvesting or trapping.

The data was captured in a way to produce court-ready documentation of use and occupancy.

# Biigigong Nishnaabeg and Nelmizaaggamig Nishnaabeg Joint 2019 Travel-Route Map Survey

## Map 1 - Biigigong Only, All Features Combined

Biigigong Nishnaabeg (formerly Pelee First Nation) and Nelmizaaggamig Nishnaabeg (Pelee Island, formerly Nelmizaaggamig) are working together to create a travel route map for the Biigigong Nishnaabeg and Nelmizaaggamig Nishnaabeg. The map is a collection of travel routes that are used for various purposes. The routes are color-coded by activity type. The map is a collection of travel routes that are used for various purposes. The routes are color-coded by activity type. The map is a collection of travel routes that are used for various purposes. The routes are color-coded by activity type.

The information displayed on this map was not obtained from a survey or other means. The information is for informational purposes only and should not be used for navigation. The information is for informational purposes only and should not be used for navigation.

The information displayed on this map was not obtained from a survey or other means. The information is for informational purposes only and should not be used for navigation. The information is for informational purposes only and should not be used for navigation.

The information displayed on this map was not obtained from a survey or other means. The information is for informational purposes only and should not be used for navigation. The information is for informational purposes only and should not be used for navigation.

The information displayed on this map was not obtained from a survey or other means. The information is for informational purposes only and should not be used for navigation. The information is for informational purposes only and should not be used for navigation.

The information displayed on this map was not obtained from a survey or other means. The information is for informational purposes only and should not be used for navigation. The information is for informational purposes only and should not be used for navigation.

The information displayed on this map was not obtained from a survey or other means. The information is for informational purposes only and should not be used for navigation. The information is for informational purposes only and should not be used for navigation.

The information displayed on this map was not obtained from a survey or other means. The information is for informational purposes only and should not be used for navigation. The information is for informational purposes only and should not be used for navigation.

The information displayed on this map was not obtained from a survey or other means. The information is for informational purposes only and should not be used for navigation. The information is for informational purposes only and should not be used for navigation.

The information displayed on this map was not obtained from a survey or other means. The information is for informational purposes only and should not be used for navigation. The information is for informational purposes only and should not be used for navigation.

The information displayed on this map was not obtained from a survey or other means. The information is for informational purposes only and should not be used for navigation. The information is for informational purposes only and should not be used for navigation.

The information displayed on this map was not obtained from a survey or other means. The information is for informational purposes only and should not be used for navigation. The information is for informational purposes only and should not be used for navigation.

The information displayed on this map was not obtained from a survey or other means. The information is for informational purposes only and should not be used for navigation. The information is for informational purposes only and should not be used for navigation.

The information displayed on this map was not obtained from a survey or other means. The information is for informational purposes only and should not be used for navigation. The information is for informational purposes only and should not be used for navigation.

The information displayed on this map was not obtained from a survey or other means. The information is for informational purposes only and should not be used for navigation. The information is for informational purposes only and should not be used for navigation.

The information displayed on this map was not obtained from a survey or other means. The information is for informational purposes only and should not be used for navigation. The information is for informational purposes only and should not be used for navigation.

The information displayed on this map was not obtained from a survey or other means. The information is for informational purposes only and should not be used for navigation. The information is for informational purposes only and should not be used for navigation.

The information displayed on this map was not obtained from a survey or other means. The information is for informational purposes only and should not be used for navigation. The information is for informational purposes only and should not be used for navigation.

The information displayed on this map was not obtained from a survey or other means. The information is for informational purposes only and should not be used for navigation. The information is for informational purposes only and should not be used for navigation.

The information displayed on this map was not obtained from a survey or other means. The information is for informational purposes only and should not be used for navigation. The information is for informational purposes only and should not be used for navigation.

The information displayed on this map was not obtained from a survey or other means. The information is for informational purposes only and should not be used for navigation. The information is for informational purposes only and should not be used for navigation.

The information displayed on this map was not obtained from a survey or other means. The information is for informational purposes only and should not be used for navigation. The information is for informational purposes only and should not be used for navigation.

The information displayed on this map was not obtained from a survey or other means. The information is for informational purposes only and should not be used for navigation. The information is for informational purposes only and should not be used for navigation.

The information displayed on this map was not obtained from a survey or other means. The information is for informational purposes only and should not be used for navigation. The information is for informational purposes only and should not be used for navigation.

The information displayed on this map was not obtained from a survey or other means. The information is for informational purposes only and should not be used for navigation. The information is for informational purposes only and should not be used for navigation.

The information displayed on this map was not obtained from a survey or other means. The information is for informational purposes only and should not be used for navigation. The information is for informational purposes only and should not be used for navigation.

The information displayed on this map was not obtained from a survey or other means. The information is for informational purposes only and should not be used for navigation. The information is for informational purposes only and should not be used for navigation.

The information displayed on this map was not obtained from a survey or other means. The information is for informational purposes only and should not be used for navigation. The information is for informational purposes only and should not be used for navigation.

The information displayed on this map was not obtained from a survey or other means. The information is for informational purposes only and should not be used for navigation. The information is for informational purposes only and should not be used for navigation.

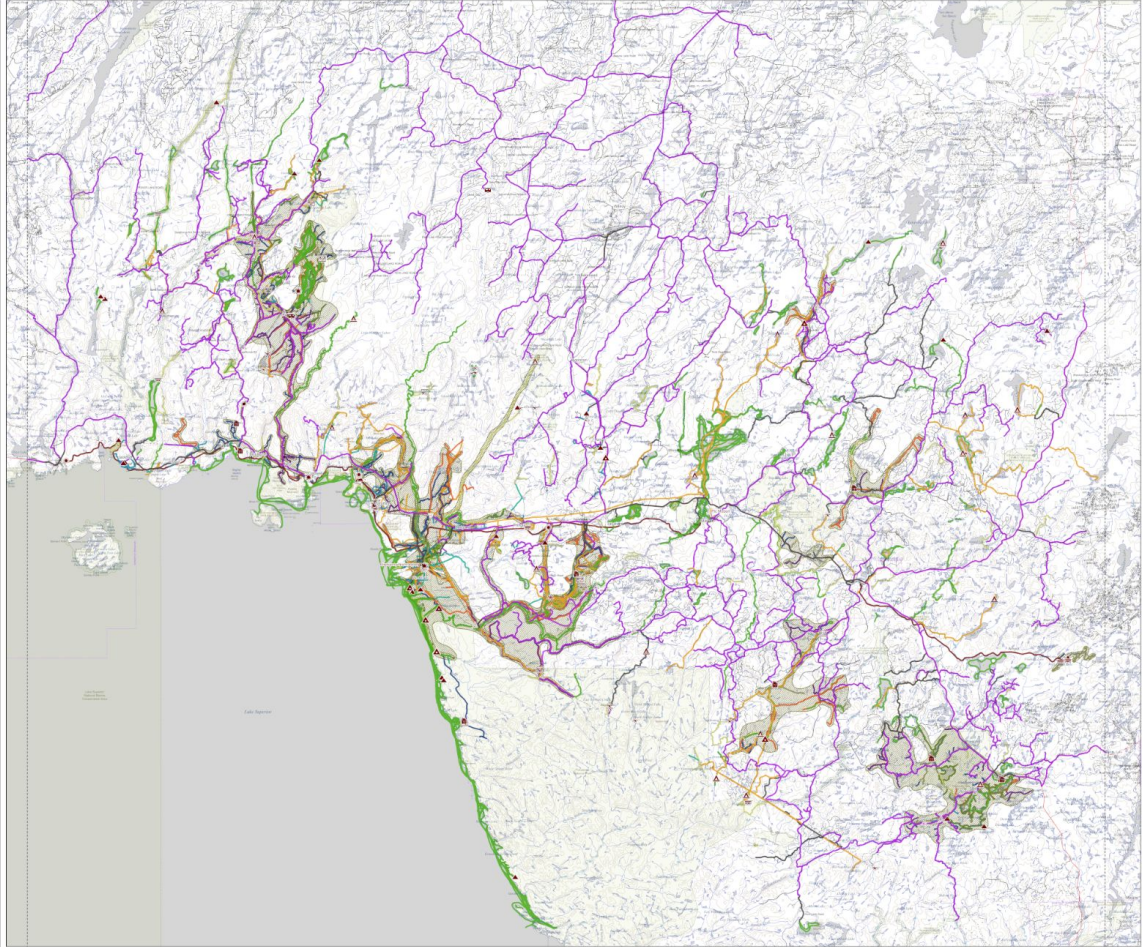
The information displayed on this map was not obtained from a survey or other means. The information is for informational purposes only and should not be used for navigation. The information is for informational purposes only and should not be used for navigation.

The information displayed on this map was not obtained from a survey or other means. The information is for informational purposes only and should not be used for navigation. The information is for informational purposes only and should not be used for navigation.

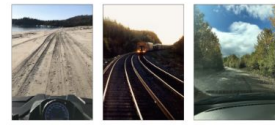
The information displayed on this map was not obtained from a survey or other means. The information is for informational purposes only and should not be used for navigation. The information is for informational purposes only and should not be used for navigation.

The information displayed on this map was not obtained from a survey or other means. The information is for informational purposes only and should not be used for navigation. The information is for informational purposes only and should not be used for navigation.

The information displayed on this map was not obtained from a survey or other means. The information is for informational purposes only and should not be used for navigation. The information is for informational purposes only and should not be used for navigation.



- Map 2—Trapping on Foot**
  - Walking (white) Trapping
- Map 3—Trapping by Skidoo**
  - Skidoo (white) Trapping
- Map 4—Trapping while Paddling Canoe**
  - Paddling Canoe (white) Trapping
- Map 5—Trapping from Boat with Motor**
  - Boat (with motor) (white) Trapping
- Map 6—Trapping by Vehicle**
  - Vehicle (white) Trapping
- Map 7—Access Trapped and Overnight Sites**
  - Born Site
  - Other Cultural
  - Log Cabin
  - Heritage Installation
  - Physwood Shack
  - Perimeter Trailer
  - Foot with Stone
  - Tent
  - Tent Frame
  - Loon Ro
  - Vehicle (white) hunting or fishing
  - Under Open Sky
  - Other Overnight
  - Trapping
- Map 8—Snaring or Shooting Rabbits on Foot**
  - Walking (blue) Rabbit (snaring or shooting)
- Map 9—Snaring for Other than Hunting Rabbits or Trapping**
  - Walking (blue) Other than trapping or snaring
- Map 10—Hunting, Fishing or Gathering by Skidoo**
  - Skidoo (white) hunting or fishing
- Map 11—Hunting, Fishing or Gathering while Paddling Canoe**
  - Paddling Canoe (white) hunting or fishing
- Map 12—Hunting, Fishing or Gathering from Boat with Motor**
  - Boat (with) Motor (white) hunting or fishing
- Map 13—Hunting by Vehicle**
  - Vehicle (white) hunting
- Map 14—Vehicle Routes to Access Trapping, Hunting or Fishing Sites**
  - Access Route
- Map 15—Train Access Routes and Airplane Landing Sites**
  - Airplane Landing (black)
  - Train (black)
- Study area boundary**



Confidential - not for circulation. Areas mapped are for discussion purposes only. Without prejudice to Aboriginal Rights and Title, including Title cases and negotiations with the Crown. Areas mapped are not representative of all property areas.

Map Created: Date: October 11, 2019  
Map used by David Cameron  
Framework: CanMap, 1:250,000, MNRF Roads  
Projection: UTM Zone 18N, NAD83  
Thanks to everyone who shared their photos for this project.



Map 1 - Biigigong Only, All Features Combined

# Biigtigong Nishnaabeg and Netmizaagamiig Nishnaabeg Joint 2019 Travel-Route Map Survey Density Map - Biigtigong Only Travel Arteries

**Biigtigong Nishnaabeg** is a First Nations community located in the heart of the Biigtigong region, approximately 100 km north of the town of Kenora. The community is situated on the western shore of Lake Biigtigong, which is a large natural lake. The community is known for its rich cultural heritage and its commitment to environmental stewardship. The community is currently undergoing a significant development project, which includes the construction of a new travel route through the area. This project is a key priority for the community, as it will provide a more direct and efficient means of travel between the community and the surrounding region. The project is being undertaken in partnership with the Netmizaagamiig Nishnaabeg community, which is also located in the Biigtigong region. The project is expected to be completed in the near future, and will have a significant impact on the community and the region as a whole.

**Netmizaagamiig Nishnaabeg** is a First Nations community located in the heart of the Biigtigong region, approximately 100 km north of the town of Kenora. The community is situated on the eastern shore of Lake Biigtigong, which is a large natural lake. The community is known for its rich cultural heritage and its commitment to environmental stewardship. The community is currently undergoing a significant development project, which includes the construction of a new travel route through the area. This project is a key priority for the community, as it will provide a more direct and efficient means of travel between the community and the surrounding region. The project is being undertaken in partnership with the Biigtigong Nishnaabeg community, which is also located in the Biigtigong region. The project is expected to be completed in the near future, and will have a significant impact on the community and the region as a whole.

**Map of the Biigtigong region** showing the location of the Biigtigong Nishnaabeg and Netmizaagamiig Nishnaabeg communities. The map highlights the travel routes and the density of the travel arteries. The map is a detailed topographic map of the region, showing the terrain, roads, and water bodies. The travel routes are highlighted in red, and the density of the travel arteries is indicated by the thickness of the red lines. The map is a valuable tool for understanding the travel routes and the density of the travel arteries in the Biigtigong region.



**Map of the Biigtigong region** showing the location of the Biigtigong Nishnaabeg and Netmizaagamiig Nishnaabeg communities. The map highlights the travel routes and the density of the travel arteries. The map is a detailed topographic map of the region, showing the terrain, roads, and water bodies. The travel routes are highlighted in red, and the density of the travel arteries is indicated by the thickness of the red lines. The map is a valuable tool for understanding the travel routes and the density of the travel arteries in the Biigtigong region.

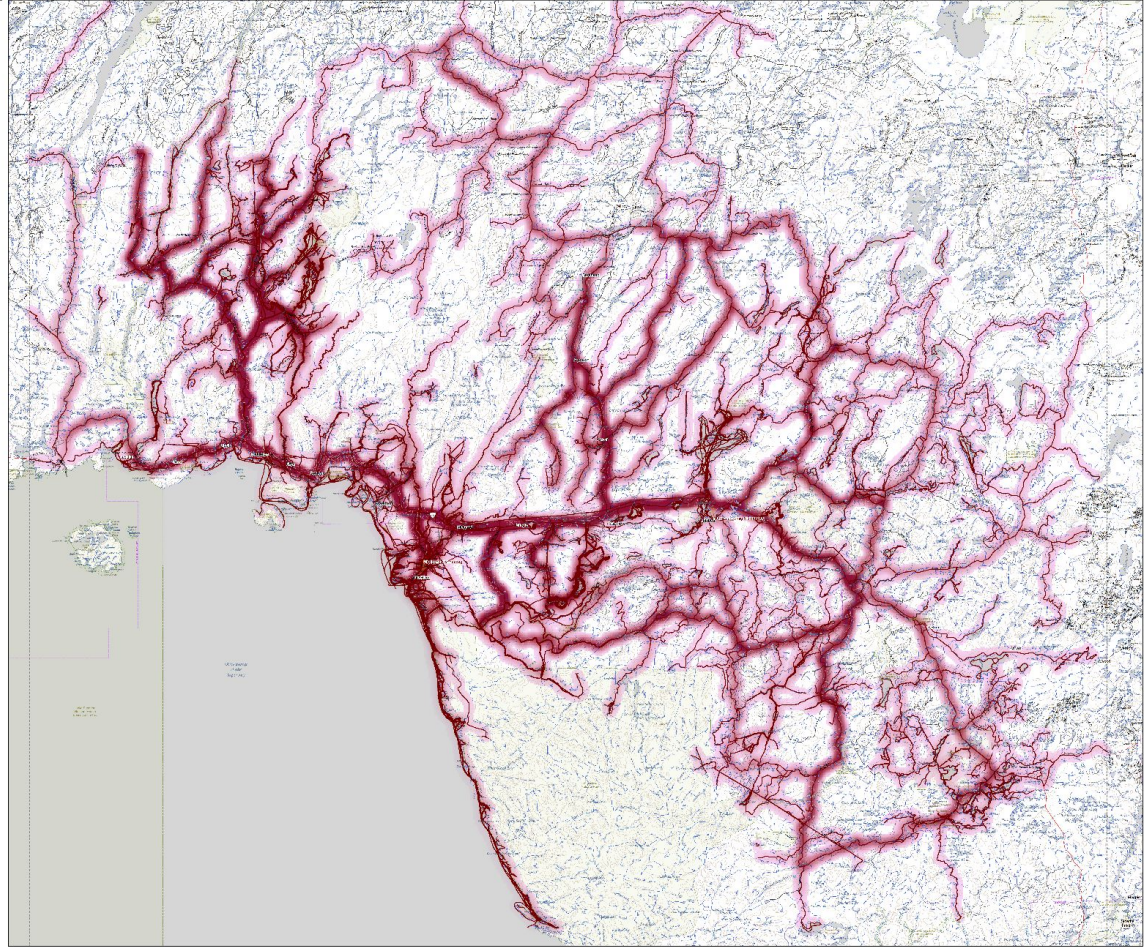
**Map of the Biigtigong region** showing the location of the Biigtigong Nishnaabeg and Netmizaagamiig Nishnaabeg communities. The map highlights the travel routes and the density of the travel arteries. The map is a detailed topographic map of the region, showing the terrain, roads, and water bodies. The travel routes are highlighted in red, and the density of the travel arteries is indicated by the thickness of the red lines. The map is a valuable tool for understanding the travel routes and the density of the travel arteries in the Biigtigong region.

**Map of the Biigtigong region** showing the location of the Biigtigong Nishnaabeg and Netmizaagamiig Nishnaabeg communities. The map highlights the travel routes and the density of the travel arteries. The map is a detailed topographic map of the region, showing the terrain, roads, and water bodies. The travel routes are highlighted in red, and the density of the travel arteries is indicated by the thickness of the red lines. The map is a valuable tool for understanding the travel routes and the density of the travel arteries in the Biigtigong region.

**Map of the Biigtigong region** showing the location of the Biigtigong Nishnaabeg and Netmizaagamiig Nishnaabeg communities. The map highlights the travel routes and the density of the travel arteries. The map is a detailed topographic map of the region, showing the terrain, roads, and water bodies. The travel routes are highlighted in red, and the density of the travel arteries is indicated by the thickness of the red lines. The map is a valuable tool for understanding the travel routes and the density of the travel arteries in the Biigtigong region.






**Map of the Biigtigong region** showing the location of the Biigtigong Nishnaabeg and Netmizaagamiig Nishnaabeg communities. The map highlights the travel routes and the density of the travel arteries. The map is a detailed topographic map of the region, showing the terrain, roads, and water bodies. The travel routes are highlighted in red, and the density of the travel arteries is indicated by the thickness of the red lines. The map is a valuable tool for understanding the travel routes and the density of the travel arteries in the Biigtigong region.

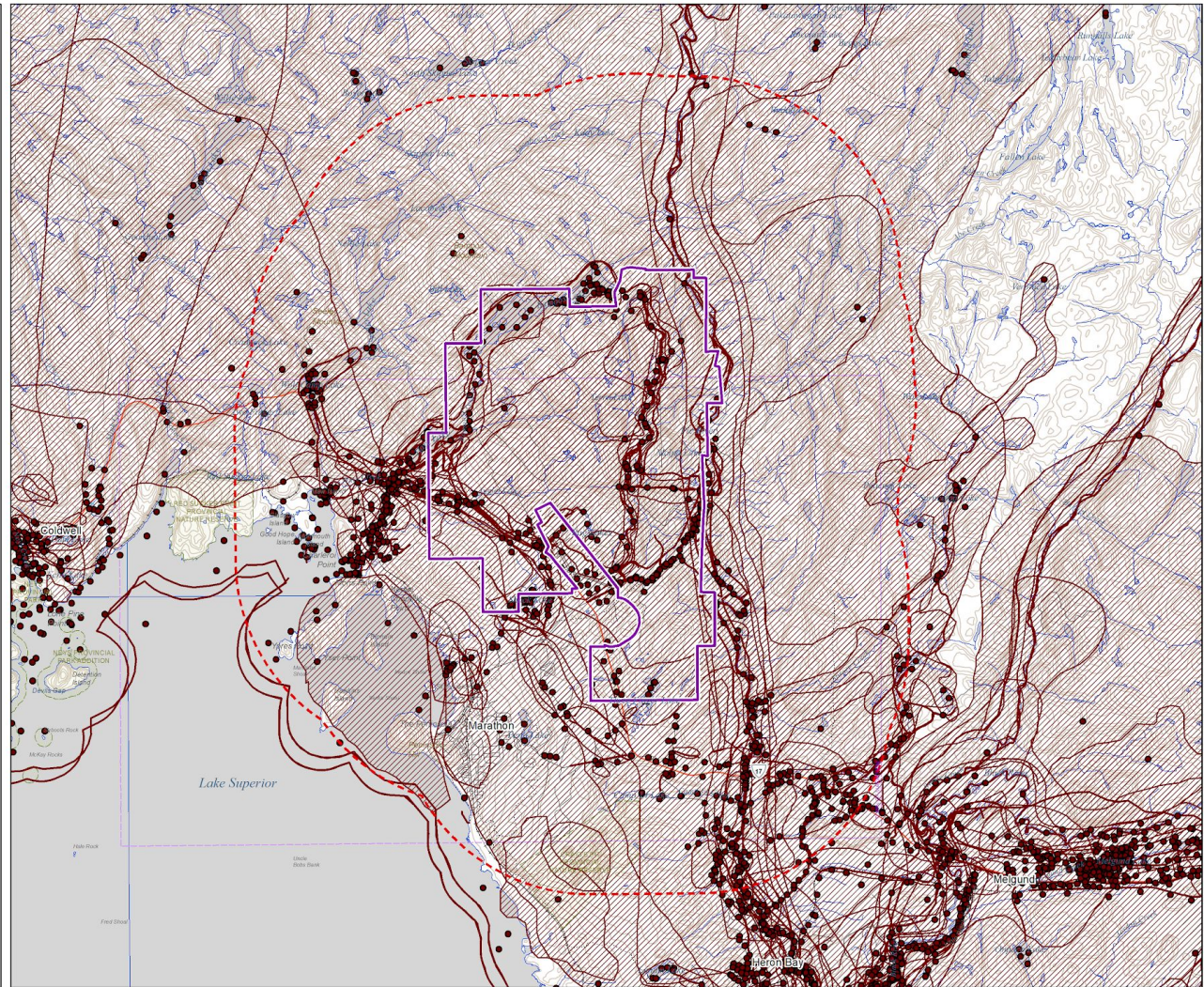
**Map of the Biigtigong region** showing the location of the Biigtigong Nishnaabeg and Netmizaagamiig Nishnaabeg communities. The map highlights the travel routes and the density of the travel arteries. The map is a detailed topographic map of the region, showing the terrain, roads, and water bodies. The travel routes are highlighted in red, and the density of the travel arteries is indicated by the thickness of the red lines. The map is a valuable tool for understanding the travel routes and the density of the travel arteries in the Biigtigong region.



# Harvest Study

# Biigtong Nishnaabeg First Nation Use and Occupancy within a 5km Radius From the Generation PGM Project Boundary

-  Generation PGM Project Boundary (MLAS, MENDM Changed 2017)
-  5km buffer from Project
-  Use and Occupancy - sites
-  Use and Occupancy - routes
-  Use and Occupancy - areas



*Confidential - not for circulation. Areas mapped are for discussion purposes only. Without prejudice to Aboriginal Rights and Title, including Title case and negotiations with the Crown. Areas mapped are not representative of all priority areas.*



Map Creation Date: February 19, 2021  
 For more information, contact:  
 Juamba Starr, Director  
 Biigtong Nishnaabeg  
 Ojibways of the Pic River First Nation  
 Heron Bay, Ontario P0T 1R0  
 P: (807) 229-8900 Ext 2



Map layout by David Carruthers  
 Framework: Atlas of Canada 1M  
 Projection: UTM Zone 16N, NAD83



1:100,000

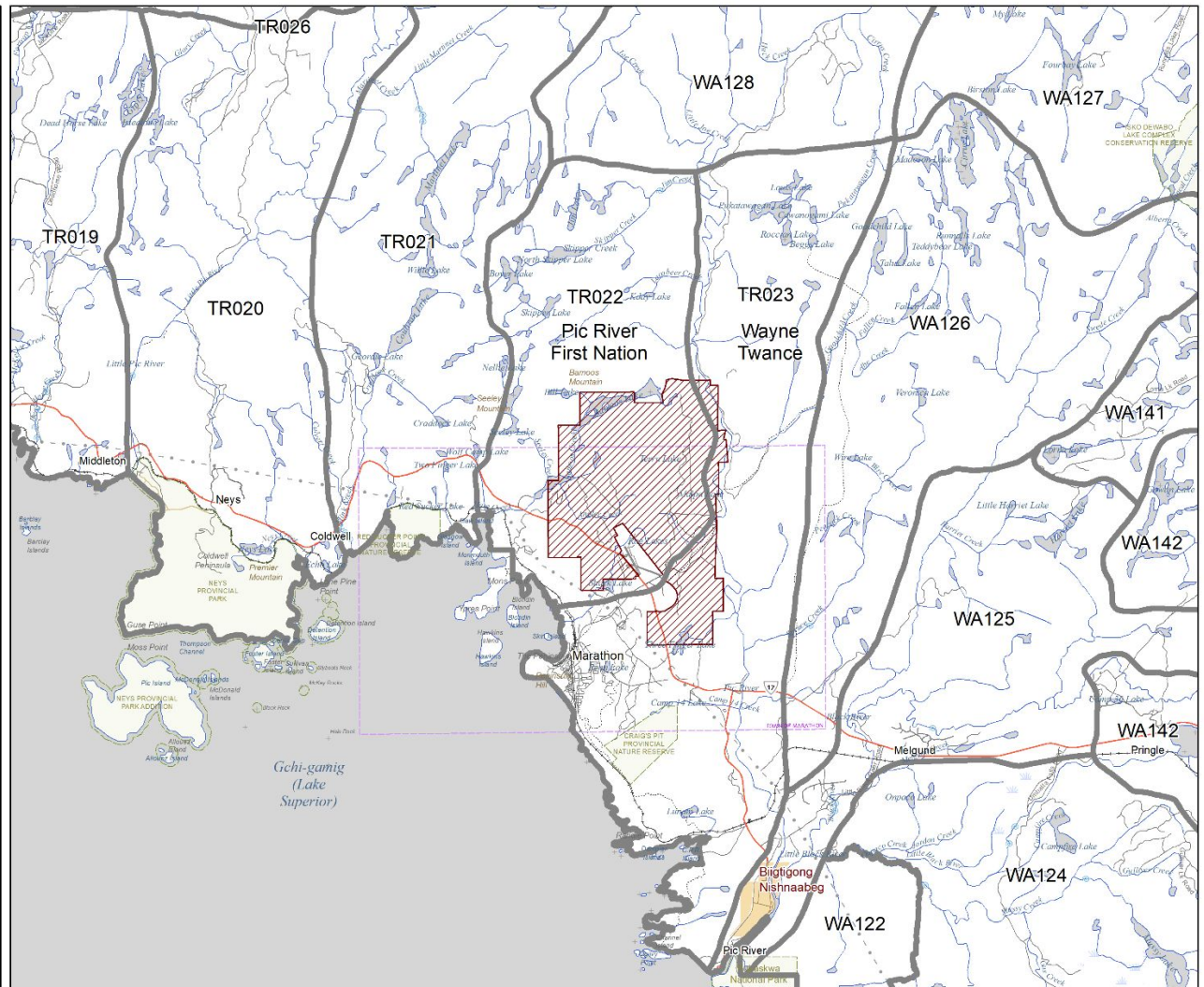
In 2012, we had evidence that 63 of our harvesters recorded over 1,000 use and occupancy features within 5km of the Marathon PGM site.

Wilfred Nabigon; Rick Moses; Wayne Twance; Stan Nabigon; Dan Couchie; Peter Moses; Robert Michano; Daniel Michano; Duncan Michano Jr.; Calvin Cress; Jim Michano; John Twance; Arthur Fisher; Aaron Twance; Jacob Cress; Ken Michano; Leo Twance; Donald Michano; Garland Moses; Dan Couchie; Warren Bouchie; Raphael Moses; Kerry Twance; Jason Fitzpatrick; Alphonse Moses; Willie Michano; Ken Desmoulin; Robert Moses; Norman Starr; Barry Desmoulin; Stan Starr; Dennis Michano; Stuart Fisher; Byron Leclair; Jon Fisher; Arnold Michano; Alvina Michano; Steve Twance; Cecil Twance; John Desmoulin; David Desmoulin; Eva Couchie; Dobie (Tobias) Goodchild; Lucas Michano; Darcy Nabigon; Duncan Michano Sr.; Randy Michano; Lester Starr; Irene Moses; Eli Michano; Camille Nabigon; Lambert Nabigon; Allan Starr; Mabel Starr; Andrew Desmoulin; Clara Moses; Wendy Twance; Annie Desmoulin; David Starr; Roland Moses; Randall Courchene

# **Wildlife and Harvesting**

# Biigtigong Nishnaabeg First Nation Traplines and the Generation PGM Mine

-  Project Footprint digitized Feb 2021
-  Biigtigong Exclusive Title Area
-  Traplines



Confidential - not for circulation. Areas mapped are for discussion purposes only. Without prejudice to Aboriginal Rights and Title, including Title case and negotiations with the Crown. Areas mapped are not representative of all priority areas.



Map Creation Date: March 20, 2021  
 For more information, contact:  
 Juanita Starr, Director  
 Biigtigong Nishnaabeg  
 Oilways of the Pic River First Nation  
 Heron Bay, Ontario P0T 1R0  
 P: (807) 229-8900 Ext 2

0 1.5 3 4.5 6  
 Kilometres

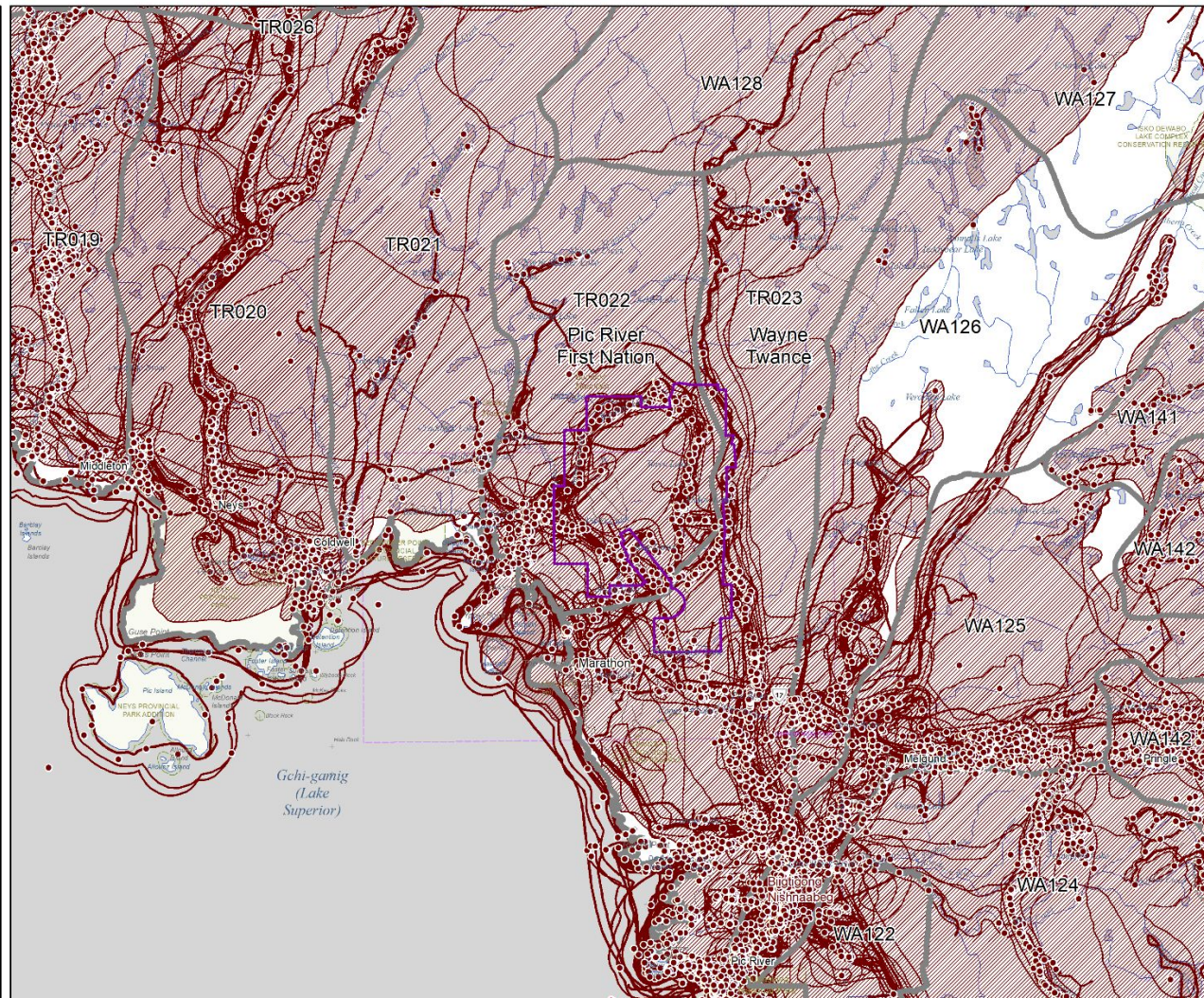
Map layout by David Carruthers  
 Framework: Atlas of Canada 1M  
 Projection: UTM Zone 16N, NAD83



1:162,347

# Biigtigong Nishnaabeg First Nation Traplines and the Generation PGM Mine

-  Project Footprint digitized Feb 2021
-  Biigtigong Exclusive Title Area
-  Traplines
-  Combined Use and Occupancy Data
-  Point Features
-  Line Features
-  Area Features



*Confidential - not for circulation. Areas mapped are for discussion purposes only. Without prejudice to Aboriginal Rights and Title, including Title case and negotiations with the Crown. Areas mapped are not representative of all priority areas.*



Map Creation Date: March 20, 2021  
 For more information, contact:  
 Juanita Starr, Director  
 Biigtigong Nishnaabeg  
 Ojibways of the Pic River First Nation  
 Heron Bay, Ontario P0T 1R0  
 P: (807) 229-8900 Ext 2



Map layout by David Carruthers  
 Framework: Atlas of Canada 1M  
 Projection: UTM Zone 16N, NAD83



1:162,347

The project falls squarely within TR022, which we call the Peter Moses Family Hunting Ground. It's current owned by the First Nation and run as a community-held trapline.

TR022 is also run as a community education / outdoor learning program, in connection with our K-8 land-based learning program.

The CCT recognizes this in (CIAR#54755):

“Given that the Project is located almost entirely within Biigtigong Nishnaabeg’s community-held trapline, it is expected that the Project would all but eliminate the usability of the trapline, and any commercial and non-commercial trapping and harvesting activities that the CCT understands members have been practicing for generations. The CCT acknowledges that the Project would remove access to Biigtigong Nishnaabeg’s already fragmented asserted traditional territory”.

GenPGM's efforts to mitigate this is to create a "Harvester Training Fund". There is a commitment to this (CIER #727), although the details of this have not been defined and BN has yet to be engaged in shaping this commitment.

We agree with the CCT that, "while the compensation proposed by the Proponent may be intended to address the economic losses resulting from the Project, it may not address or mitigate the associated cultural, social, and spiritual impacts that are inextricably linked to commercial and non-commercial trapping and harvesting activities occurring in the Project area."(CIAR#54755)

We also agree with the CCT that:

“Project will likely necessitate Biigtigong Nishnaabeg travelling greater distances to exercise rights associated with hunting and harvesting elsewhere. This will result in an increased level of effort for Biigtigong Nishnaabeg in undertaking harvesting activities and a potential decrease in harvesting success. The CCT notes that this will present challenges for the community in undertaking these activities ”(CIAR#54755)

We have asked the Crown for the following mitigation:

1. To provide a replacement trapline to the community; and
2. Offset impacts to our land-based learning program with the support for a land-based learning facility elsewhere in the Exclusive Title Area.

NDMNRF Response to trapline TR022 replacement:

“Our staff have considered all the information that BN shared during these discussions and they are currently working internally to identify how we can address the impact that the proposed Generation Mine will have on your existing community trapline.”

No commitments at this time from Ontario.

NDMNRF Response to Land Based Learning Facility:

“The NDMNRF would like to discuss this matter in more detail directly with BN and work collaboratively regarding this proposal to better understand BN’s interests and to explore potential opportunities.”

No commitments at this time from Ontario.

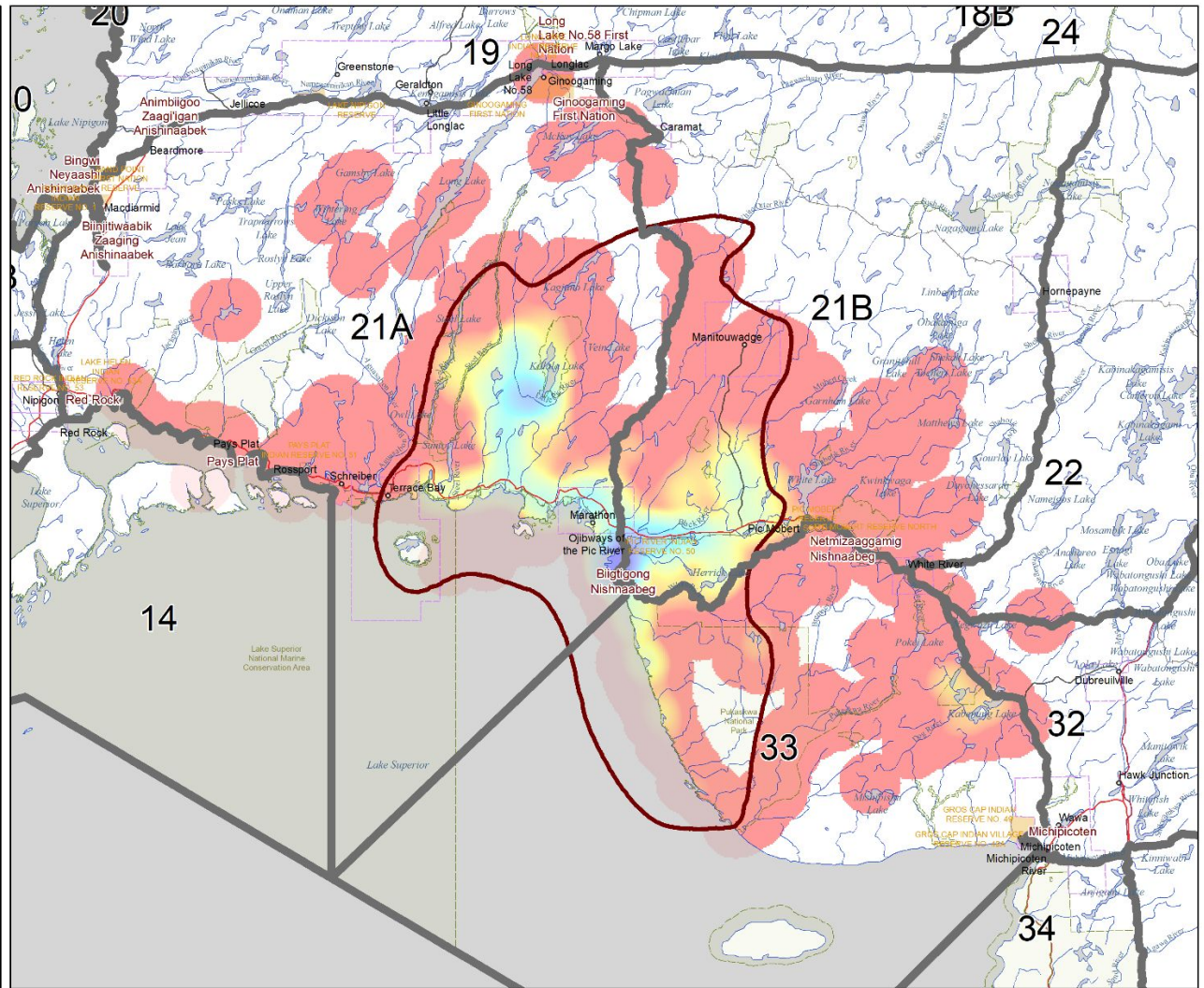
In terms of impacts to wildlife / trapping / harvesting, we need to look more closely at Ontario's wildlife management policy and how this plays an important role in creating an already stressed environment for Biigtigong harvesters, and how the mine would be additive to these stresses.

# Biigtong Nishnaabeg First Nation Heatmap (density) of Use and Occupancy Data and Core Use Areas

Density of UOM Data  
High: 0.5 features / ha

Low

Biigtong Exclusive Title Area  
 Wildlife Management Units



*Confidential - not for circulation. Areas mapped are for discussion purposes only. Without prejudice to Aboriginal Rights and Title, including Title case and negotiations with the Crown. Areas mapped are not representative of all priority areas.*



Map Creation Date: March 20, 2021  
For more information, contact:  
Juanita Starr, Director  
Biigtong Nishnaabeg  
Ojibways of the Pic River First Nation  
Heron Bay, Ontario P0T 1R0  
P: (807) 229-8900 Ext 2



Map layout by David Carruthers  
Framework: Atlas of Canada 1M  
Projection: UTM Zone 16N, NAD83

1:1,000,000

In 2013, Wildlife Management Unit 21A had 10x the provincial average moose tags of any WMU. The provincial average moose tags at that time was 210. For WMU 21A, it was 2,260. It has remained high, at 7.75x the provincial average for cow gun tags last year.

A total of 970 tags were allocated in the management unit. We can assume that more than half of these accessed the area using the Deadhorse Road - the first road into the WMU off the highway as you drive up from Southern Ontario.

This has funneled hundreds of non-Indigenous hunters into Biigtigong's highly sensitive core cultural use area.

BN harvesters have recorded numerous conflicts with armed hunters.








This has forced BN community to go elsewhere - including moving their annual moose camp, now located over an hour away from the community up the Manitouwadge Highway.

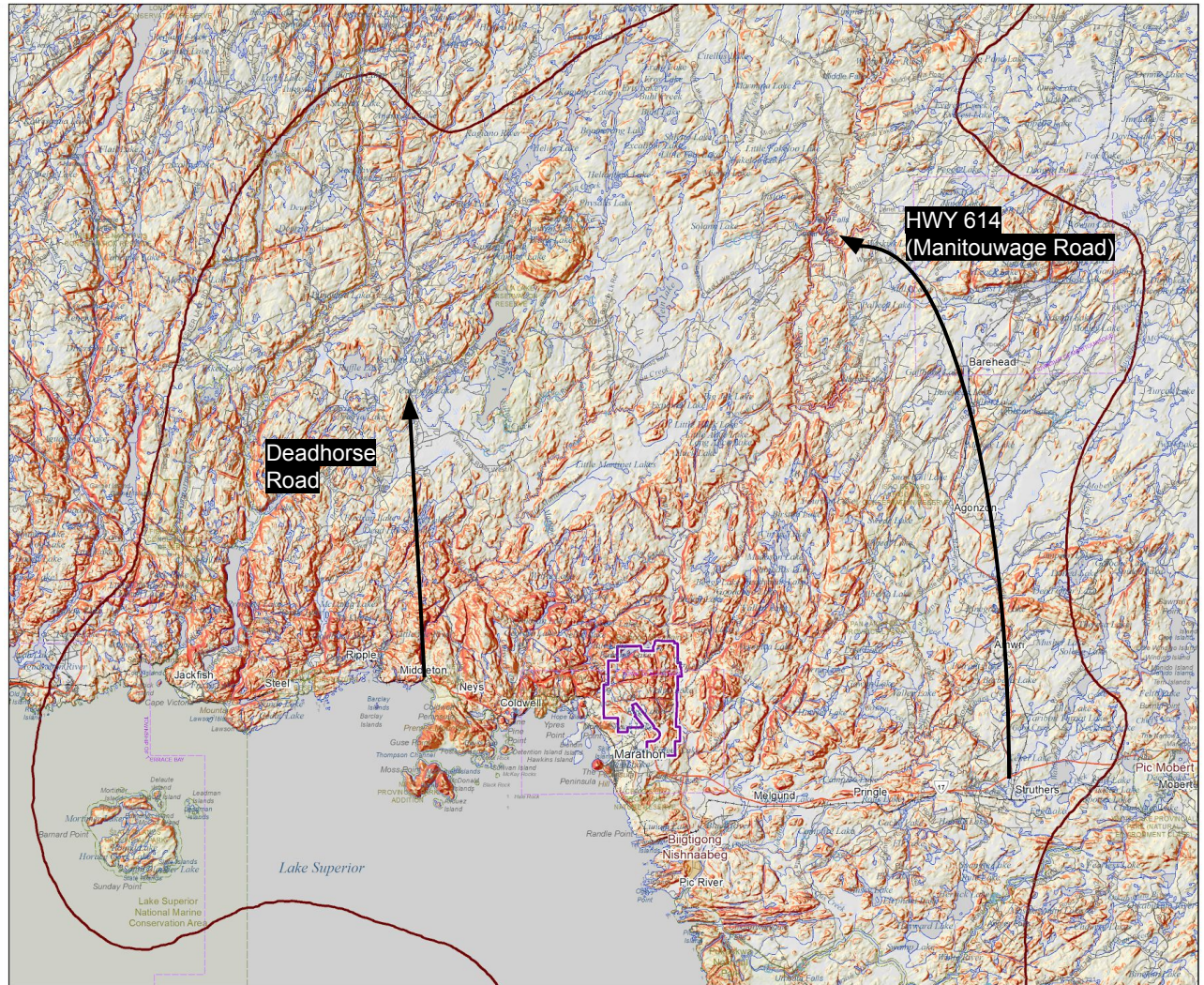
We have consistently requested that BN be meaningfully engaged in wildlife management issues in general, and decision making for WMU 21A more specifically. We have flagged the need to split WMU 21A into two - an eastern and a western portion. This would allow the WMU to be managed in a way that is sensitive to access issues and sensitive to Indigenous land use rights.

This is of key importance to the GenPGM project; harvesters will not be using the Camp 19 road, thereby adding additional pressures to the stressed Deadhorse Road area (WMU 21A).





Biigtigong Nishnaabeg First Nation  
Summary Topography and Access map


-  Biigtigong Nishnaabeg Aboriginal Title Claim Area
-  Generation PGM Project Boundary (MLAS, MENDM Changed 2017)
- Slope (gradient in percent)
-  Little or None (0-3%)
-  Gentle (3-9%)
-  Moderate (9-15%)
-  Steep (15-30%)
-  Extremely Steep (30-60%)
-  Excessively Steep (>60%)




Confidential - not for circulation. Areas mapped are for discussion purposes only. Without prejudice to Aboriginal Rights and Title, including Title case and negotiations with the Crown. Areas mapped are not representative of all priority areas.

Map Creation Date: February 20, 2021  
For more information, contact:  
Juamta Starr, Director  
Biigtigong Nishnaabeg  
Ojibways of the Pic River First Nation  
Heron Bay, Ontario P0T 1R0  
P: (807) 229-8900 Ext 2





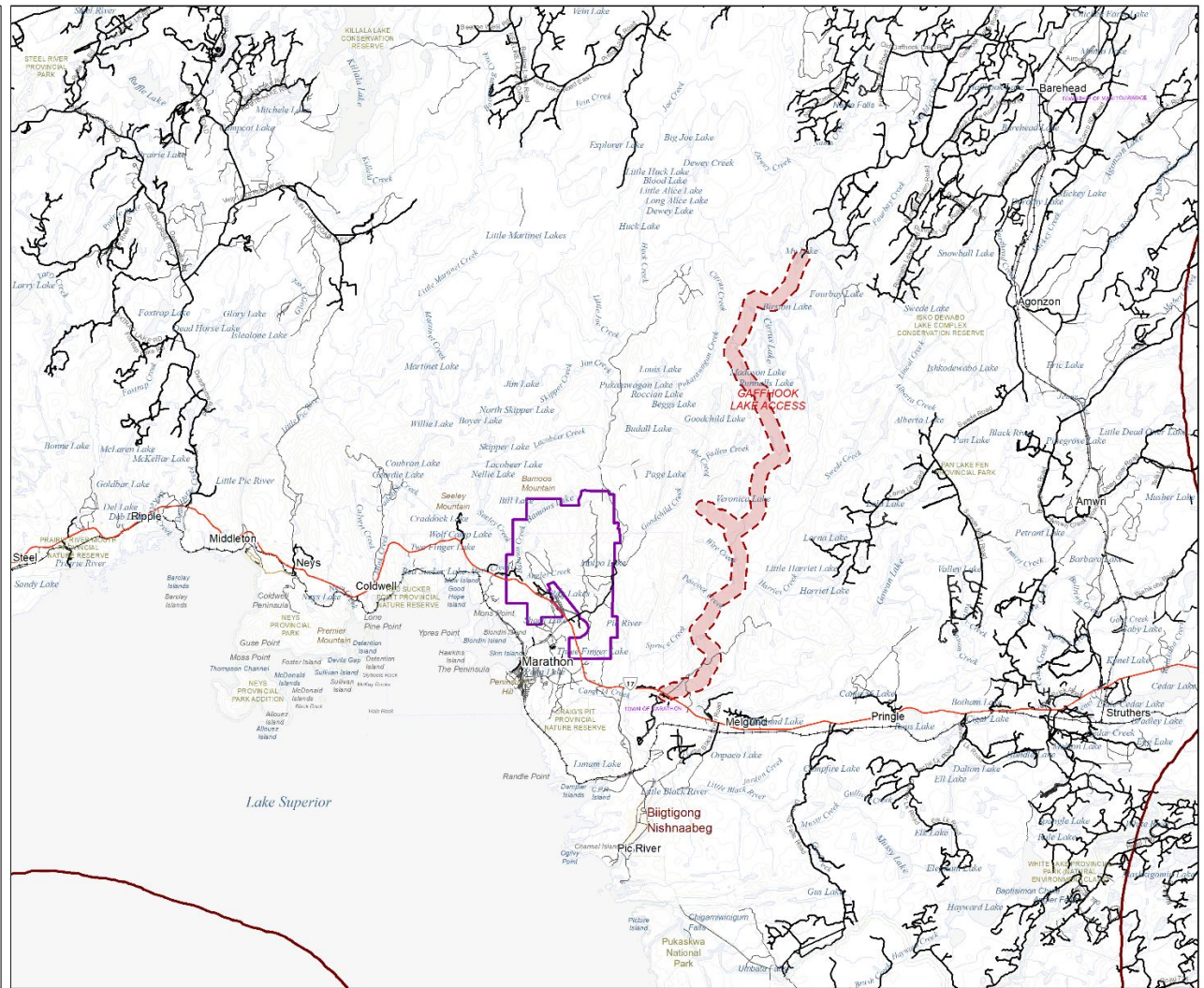
1:375,000

Map layout by David Carruthers  
Framework: Atlas of Canada 1M  
Projection: UTM Zone 16N, NAD83



We presented the idea of constructing a bypass road or an alternate north-south access route into the Exclusive Title Area. A route was selected based on forest road development plans from the Pic Forest Management Plan (2021).

# Bigtong Nishnaabeg First Nation Access Roads and Mitigation

-  Bigtong Nishnaabeg Aboriginal Title Claim Area
-  Generation PGM Project Boundary (MLAS, MENDM Changed 2017)
-  Roads and Forest Access Roads
-  Proposed Bigtong Bypass Access Road





Confidential - not for circulation. Areas mapped are for discussion purposes only. Without prejudice to Aboriginal Rights and Title, including Title case and negotiations with the Crown. Areas mapped are not representative of all priority areas.

Map Creation Date: September 14, 2021

For more information, contact:  
 Juanita Starr, Director  
 Bigtong Nishnaabeg  
 Ojibways of the Pic River First Nation  
 Heron Bay, Ontario P0T 1R0  
 P: (807) 229-8900 Ext 2

1:256,780

Map layout by David Carruthers  
 Framework: Atlas of Canada 1M  
 Projection: UTM Zone 16N, NAD83

We have presented this issue to the Crowns on several occasions.

NDMNRF has noted that they are “interested in discussing this in more detail” (CIAR#54755).

No commitments have been made on this issue.

## Summary of Required Mitigation Commitments

This applies to both the GenPGM and the Crowns:

1. Replacement trapline;
2. Construction of land-based learning facility;
3. Split WMU 21A into two management units and engagement with BN meaningfully in the management of these units; and
4. Construction of bypass access road

