

GENERATION PGM

News Brief

An Introduction to our Team and the Marathon Palladium Project

Generation PGM Inc. (GenPGM) is a subsidiary of Generation Mining Limited that is an exploration and development company with interests in platinum group metals (PGM), specifically the Marathon Palladium Project. Generation Mining acquired a 51% interest in the Marathon Property from Sibanye-Stillwater on July 10th, 2019, with the option to earn up to 80% interest within the next four years. GenPGM is currently focussed on the development of the Marathon Palladium project in Northwestern Ontario, the most advanced palladium project in North America. The Project is located approximately 215km east of Thunder Bay and 10km north of Marathon, within the Coldwell Alkaline Complex. Our goal is to provide News Briefs that will be present in a number of northwestern Ontario newspapers, notably the Marathon Mercury of Marathon and The Chronicle Journal of Thunder Bay, to provide communities with information about our current activities with the opportunity to provide feedback and ask questions. These updates will also be listed on the company website at www.genmining.com.

The Marathon Palladium Project property was developed from 1985 to 2010 by various companies. More than 203,000 metres of drilling in 1,094 holes have been drilled to date on the Property, dating back to as early as the 1960s. The Property is located in close proximity to excellent infrastructure, including the Trans-Canada highway, the main line of the Canadian Pacific Railroad and the Marathon Airport. The town of Marathon offers a promising staging point for any future mine construction.



Generation Mining has a strong Management Team, consisting of individuals with decades of experience in the mining industry. Multiple members, including President and CEO Jamie Levy, Executive Chairman Kerry Knoll, and COO Drew Anwyll, have foundations in the management of mining companies, heavily focussed on mining operations and finance management. Brian Jennings, CFO and Patricia Mannard, VP of Finance, cover a range of experience in the financial management of resource companies and exploration companies. Rod Thomas, VP of Exploration and John McBride, Senior Exploration Geologist, demonstrate extensive knowledge of the Project geology and as Professional Geoscientists of Ontario, maintain standards of practice and ethics to protect public interest. Tabatha LeBlanc, Manager of Sustainability is overseeing the Environmental Assessment of the Project and subsequent permits and approvals.

Our Team is dedicated to the future of the Marathon Palladium Project. We respect and value any feedback and we invite you to contact us with any questions, concerns or suggestions.

Additional Project updates can be found on the Impact Assessment Registry at <https://iaac-aeic.gc.ca/050/evaluations/proj/54755?culture=en-CA>

Contact us at comments@genpgm.com

GENERATION PGM LTD. — www.genmining.com —

GENERATION PGM

News Brief

Marathon Palladium Project Timelines

Generation PGM Inc. restarted the Environmental Assessment (EA) process in June of 2020. Due to the significant effort conducted on previous environmental studies and the development of working relationships with various governmental agencies in 2012, we are able to focus our efforts on simply refreshing some aspects of studies that were previously completed. In 2014, the Project and the Environmental Assessment was paused shortly before the start of the Joint Review Panel (JRP) Hearings, and since the Project was paused and not cancelled, the EA will be restarted generally from where it was stopped. The initiation of a Feasibility Study on the project is occurring in parallel with the EA, with the goal of optimizing the value, updating for best available technologies and practices for the Project, and minimizing risks.

Some of the steps required to commence this process include: i) update and confirm existing baseline studies, ii) capture and model optimizations being processed in the Feasibility Study, iii) document any conclusions in the EIS Report addendum, iv) undertake the JRP hearings.

Stages for Environmental Assessment	TENTATIVE TIMELINE (EA)																						
	2020						2021						2022										
	5	6	7	8	9	10	11	12	1	2	3	4	5	6	7	8	9	10	11	12	1	2	3
Baseline Data Collection/Confirm	█	█	█	█																			
Prepare Baseline Addendum				█	█	█																	
Complete Impact Analysis/Models					█	█	█																
Joint Review Panel (JRP) Appointed							█	█	█														
Prepare Main Report Addendum								█	█	█													
Submit Addendum(s)									█	█	█	█											
Public Review Period										█	█	█	█										
JRP Information Requests (IRs)											█	█	█	█									
GenPGM Review and Respond to IRs												█	█	█	█								
JRP Review - Sufficiency Determined														█	█	█	█						
Panel Hearing Notice															█	█	█	█					
Public Hearings																█	█	█	█				
JRP Report																	█	█	█	█			
Environment Ministers Decision																					█	█	█

The main focus for 2020 is to complete the Environmental Impact Statement (EIS) and progress the Feasibility Study. Once the EIS is submitted the Joint Review Panel determines if the EIS is sufficient and will then hold public hearings in which any interested party has an opportunity to participate. A recommendation will be submitted to the Ministers of the Environment upon completion of the hearings and submitted for public review.

Overall Schedule for Project



After EA approval and permits are obtained, the Project will be able to move forward into the construction phase. Site preparation is expected to take 18 to 24 months, dependent on project approval, with subsequent mine production to follow. Construction and production are also subject to favorable results in the feasibility study, permitting and financing of the project.

We look forward to keeping you informed on our progress. Please contact us with any questions or concerns.

Contact us at comments.genpgm.com

GENERATION PGM

News Brief

The Reinstatement of the Marathon Palladium Environmental Assessment Report

In September 2019, Generation PGM Inc. (GenPGM) confirmed with the Impact Assessment (IA) Agency the Environmental Assessment (EA) of the Marathon Palladium Project would continue under the Canadian Environmental Assessment Act (CEAA, 2012). The Environmental Impact Statement (EIS) information for the Project was found to be sufficient by the Joint Review Panel (JRP) in 2014, however, shortly after the public hearings were declared the Project was put on pause. GenPGM announced the official restart of the EA process in July 2020, and is able to pick up generally from where the Project was paused. Some aspects of the EIS will need to be refreshed to account for regulatory changes, passage of time and optimization of Project design. GenPGM has updated the baseline reports to incorporate these changes, and included additional data from field programs, that in some cases, have been carried on throughout the pause. These updated baseline reports were submitted to the IA Agency November 13, 2020. To give public, government and communities time to refamiliarize themselves with the Project, GenPGM has decided to submit the updated EA documentation in a staggered approach prior to the commencement of the JRP and commencement of public review in early 2021.

The importance of this process is not only to consider the effects on the valued ecosystem components (VECs) within the Project footprint, but to mitigate and possibly eliminate any potentially negative effects on the surrounding communities, to ensure that quality of life for individuals and communities is protected. Examples of studies conducted by GenPGM to understand potential Project effects locally and regionally include: terrestrial surveys (bird monitoring, mammals, insects, plants) groundwater and surface water surveying, air quality monitoring, aquatic life surveys and identifying potential Cultural Heritage sites.

An important aspect of the Environmental Assessment process is public participation and engagement. Although public health orders prevented large face to face gatherings, we continue to host virtual open houses, and make ourselves available to receive feedback to ensure we are taking into consideration concerns and suggestions moving forward.



More Information on the Project can be found at www.genmining.com/projects/ and the Impact Assessment Registry at <https://iaac-aeic.gc.ca/050/evaluations/proj/54755?culture=en-CA>

Contact us at comments@genpgm.com

GENERATION PGM

News Brief

Marathon Project 2020 Baseline Reports Available

The Marathon Project Area has been studied by environmental scientists since 2007, as part of the long-term planning for the Marathon Mine, an open pit palladium and copper mine located 10 km north of the Town of Marathon.

In November 2020, twelve new Baseline Reports were shared on the Canadian Impact Assessment Agency's online Environmental Registry <https://iaac-aeic.gc.ca/050/evaluations/proj/54755?culture=en-CA> and on Generation PGM's website as an update to the 2014 Marathon EA Report. These new baseline reports provide the results of our 2020 field studies, and detail aspects of the natural and human environment including:

- o Plants and Animals
- o Fish and Water Quality
- o Surface Water and Groundwater
- o Air and Noise
- o Rocks and Soils
- o Traffic, Employment and Economics



There have not been many changes to the environment since the 2014 Baseline Studies, but some important updates have been made. We plan to share summaries of these reports and the key updates with you in the coming weeks, please submit any questions or comments to our Company email: comments@genpgm.com

LOOKING AHEAD: The updated Environmental Assessment report and Environmental Impact Statement will be ready for public review and comment in early 2021.

Contact us at comments@genpgm.com

GENERATION PGM LTD. — www.genmining.com —

GENERATION PGM

News Brief

Plants and Animals in the Marathon Project Area

The Marathon Project Area has been studied by environmental scientists since 2007, as part of the long-term planning for the Marathon Mine, an open pit palladium and copper mine located 10 km north of the Town of Marathon. Marathon's 2020 Terrestrial Baseline Report provides the results of recent plant and animal studies in the area.

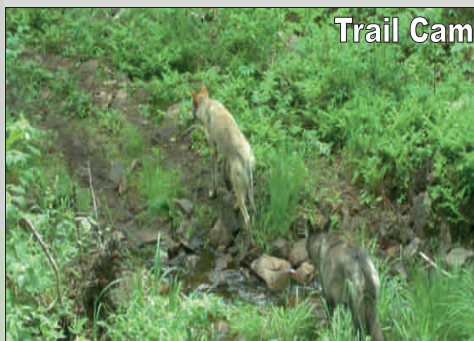
Our field biologists were out on the ground this spring and summer taking samples and photos; doing night time bird and bat surveys; and walking the area studying the local plants and animals. We also worked with Indigenous communities to identify important species that should be considered in our studies.

The area is dense, mature mixed wood and conifer forest, including bedrock outcrops, cliffs and some wetlands. Wildlife studies included putting motion-activated trail cameras in 8 locations around the site in 2020. The cameras took photos of black bear, grey wolf, beaver, snow hare, moose, sandhill crane and marten. White tailed deer are a new species at the site in 2020.



Our 2020 studies also included installing 12 microphones around the site to listen for night time bird and bat calls. No special birds were recorded, but we did

find the presence of important bats foraging in the area. GenPGM's commitment to Species at Risk includes the creation of a Bat Mitigation Strategy and ongoing work with our local communities and regulators to plan for an overall benefit to these species.



Trail Cam

LOOKING AHEAD: We plan to share more information with you in the coming weeks, please submit any questions or comments to our corporate email at comments@genpgm.com

GENERATION PGM

News Brief

Aquatic Baseline Studies at Marathon

Water and fish in the Marathon Project Area have been studied by environmental scientists since 2006, as part of the long-term planning for the Marathon Palladium Mine. In December 2020, GenerationPGM published Baseline Reports describing our studies.

Our work with local communities has also highlighted the importance of clean water and fish spawning habitat in the Pic River and in Lake Superior. Our field work provides the foundation for GenerationPGM's commitment to the protection of water quality and aquatic life.

Fish and water work on-site includes:

- 10 years of water quality data
- 80,000 water quality sample records
- 58 Water quality stations
- 36 Groundwater wells (hydrogeology)
- 11 On-site flow stations



Environmental monitoring showed that the water quality in the small ponds and lakes at the Project site is good, with most parameters meeting Ontario Provincial Water Quality Objectives (PWQO), but since they are isolated due to rugged landscape, they do not have fish living in them. Many important fish species do live in the nearby Shack Creek, Bamoo's Lake and Hare Lake, which are connected to Pic River and Lake Superior. The fish community there includes sturgeon, walleye, trout, perch, pike, salmon, suckers and dace.

Fish community studies at the site and in the local area have included electrofishing, netting and minnow trapping. Indigenous communities were engaged to undertake traditional studies and identify important fish species (Valued Ecosystem Components) in the area.

Are you interested in learning more? Every year we invite members of the local and Indigenous communities to participate in our field programs. Contact us at comments@genpgm.com

A detailed summary of the studies and methodology included in aquatic baseline reports can be found at:

<https://www.genmining.com/projects/generation-pgm/technical-reports/>

Contact us at comments@genpgm.com

GENERATION PGM

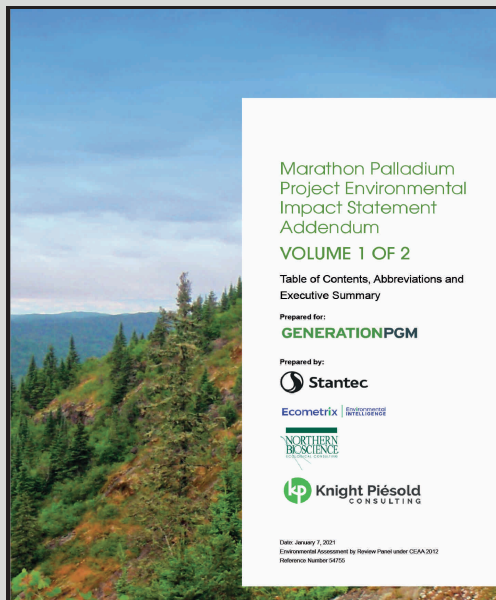
News Brief

Environmental Impact Statement Volume 1 Submission

Generation PGM Inc. (GenPGM) is pleased to announce the submission of the first half of the Environmental Impact Statement (EIS) Addendum to the Impact Assessment Agency of Canada (IAAC). This is the first step in addressing the Information Requests (IRs) from the previous Joint Review Panel (JRP) before the project went on pause in 2014. The official restart for the review panel, including public review and comment, will begin once Volume 2 of the EIS is addressed, fulfilling the IR from the previous Environmental Assessment Report.

The submission includes four Chapters that are separated into:

- **Chapter 1:** Background and Introduction
- **Chapter 2:** Project Scoping
- **Chapter 3:** Project Alternatives
- **Chapter 4:** Environmental Setting



Chapter 4 includes a summary of findings of baseline studies in a compiled report. GenPGM has recently released a series of baseline reports that range from anthropogenic to environmental studies and can be reviewed at:

<https://www.genmining.com/projects/generation-pgm/technical-reports/>

To see the submission of the EIS Addendum Volume 1, please visit:

<https://iaac-aeic.gc.ca/050/evaluations/document/137547>

Contact us at comments@genpgm.com

GENERATION PGM

News Brief

Atmosphere Baseline Studies at Marathon

Air and noise background studies at the Marathon Palladium Project have been underway for many years. In December 2020 updated Baseline Reports were published on the GenPGM website and the government registry and are summarized below.

Five dust monitoring stations and three particulate matter stations were installed on and around the Project site in 2011, including locations at Pic River, May's Gifts, Hare Lake, the Marathon Airport, and the Marathon Field Office. Long term climate and air quality information was also collected from four weather stations in the regional area. Background air quality at the Project site is good, it is in a relatively undeveloped area with very little sources of contaminants including the nearby highway, airport and landfill site.

Noise monitoring stations were installed on and around the Project site in 2009 and 2013. The baseline noise study also modelled noise levels at 25 important locations in the area like cottages, churches, motels and residences where noise could change from the Project.



GenerationPGM is dedicated to meeting Ontario air quality standards and guidelines and will implement an emissions management plan to reduce the Project's carbon footprint.

To read the full atmospheric and acoustic baseline reports produced by GenPGM, please visit:

<https://www.genmining.com/projects/generation-pgm/technical-reports/>

Contact us at comments@genpgm.com

GENERATION PGM

News Brief

Marathon Palladium Project Jobs and Economics

The Marathon Palladium Project is a proposed open-pit mine in which copper and palladium ore will be crushed and processed at an on-site facility. Mine site production is estimated to begin late 2023, with a peak required workforce of nearly 900 workers during the construction phase. On average, the operation will employ 400 people with full time, permanent jobs, for the estimated mine life of roughly 12 years in addition to 2 years of construction.

A large variety of workers are required in a mining setting. The majority of support comes from trades and production occupations, including mechanics, welders, heavy equipment operators and the manufacturing of utilities. Engineers, geologists and geotechnicians have important roles in the development and extraction of the open-pit and mine rock, and conduct environmental monitoring daily. The entire operation is supported by a department of human resources and administration services that will provide management, servicing and complete financial obligations.

In the Marathon region, mining is an important industry and provides employment for nearly 700 persons, which is nearly 15% of the labour force. The Project will bring increased economic benefits to local and regional communities and Indigenous communities along the north shore of Lake Superior. We are focussed on increasing business and economic opportunities and labour incomes in local communities.



To review the Marathon Project Socioeconomics baseline report please visit: <https://www.genmining.com/projects/generation-pgm/technical-reports/>

Contact us at comments@genpgm.com

GENERATION PGM

News Brief

Project Optimization of the Marathon Palladium Project

The Marathon Palladium Project represents a strategic asset for a competitive Ontario economy and is instrumental in the transition towards renewable energy and green technologies. A global palladium deficit provides an opportunity to expand palladium production in Northern Ontario and revitalize our economy.

Although most of the planning phase for major Project components was completed from 2009 to 2014, there are key design updates proposed in the current mine design. The life of mine has been extended to approximately 12.7 years with a production of 25,000 tonnes per day. The mine plan includes three open pits, a North, Central and Southern pit, which compares to previous designs to have one primary and four satellite pits. The overall footprint of the pits remains relatively consistent to prior designs, but will enhance Project economics and operational efficiency.



The size of the Mine Rock Storage Area has been reduced by proposing to store mine rock within the open pits during later stages of mine life when they have been mined out and cleared. The buildings that will host the processing plant and primary crusher have been relocated west of the open pits, to add distance from Pic River. The Process Plant is currently going through optimization studies to improve metallurgical recovery in a Feasibility Study, expected to be released in late Q1 2021.

To review the complete Project optimization please see Chapter 1 of the Environmental Impact Statement Addendum at:
<https://iaac-aeic.gc.ca/050/evaluations/document/137547?&culture=en-CA>



Contact us at comments@genpgm.com

GENERATION PGM LTD. – www.genmining.com –

GENERATION PGM

News Brief

Environmental Permitting

The Marathon Palladium Project is a proposed open pit mine and processing facility. Construction is planned to begin in 2022 and a 13 year mine life is expected to begin in 2023.

Estimated Timeline

	2020	2021	2022	2023
PEA Study	✓			
Feasibility Study	✓			
EIS Addendum				
Permitting/Approvals				
Construction				
Production				

Prior to Project construction, a Joint Review Panel (federal and provincial regulators) must approve the environmental assessment, and several detailed environmental permits will be required. GenPGM is committed to keeping local and Indigenous communities informed about the Project design, potential impacts, planned monitoring programs and mitigation measures.

Environmental permits required for the Project will include:

- End Land Use and Closure Planning
- Fish Habitat Loss
- Overall Benefit for Woodland Caribou
- Water Management and Discharge
- Air Quality and Climate Change



Municipal approvals include a site plan agreement to permit mining operations, and subsequent permits required for the construction of any Project buildings.

We look forward to sharing more details about the Project planning and permitting and welcome your comments. Please contact us with any questions or concerns at comments@genpgm.com

The EIS Addendum Volume 1 is available on GenPGM's website and on the Impact Assessment Agency of Canada Registry website found at:

<https://iaac-aeic.gc.ca/050/evaluations/document/137547>

Contact us at comments@genpgm.com

GENERATION PGM

News Brief

Water Management System at the Marathon Palladium Project

Water and the protection of aquatic resources is a top priority for GenPGM and our Indigenous partners. The Project is located in an area near important streams, rivers and Lake Superior. GenPGM is committed to going above and beyond minimum requirements to ensure water quality and fish health are protected during Project construction, operations and into closure.



Water management on the Project site will include collecting storm runoff in ponds and catch basins as part of the water treatment system. Water will be reused and recycled through the process plant throughout the life of mine.



Construction of a water treatment plant will ensure the water quality before it is discharged to the environment. Based on consultation, the Project design has been updated to include a single discharge into Hare Lake on a seasonal basis. Water quality and fish health will be monitored in the lake.

Details of the planned water management facilities can be reviewed in Volume 1 of the EIS Addendum available on GenPGM's website and on the Impact Assessment Agency of Canada registry website found at:

<https://iaac-aeic.gc.ca/050/evaluations/document/137547>

Contact us at comments@genpgm.com